



HAL
open science

Novel xylan-binding properties of an engineered family 4 carbohydrate-binding module

Lavinia Cicortas Gunnarsson, Cedric Montanier, Richard B Tunncliffe, Mike P Williamson, Harry J Gilbert, Eva Nordberg Karlsson, Mats Ohlin

► **To cite this version:**

Lavinia Cicortas Gunnarsson, Cedric Montanier, Richard B Tunncliffe, Mike P Williamson, Harry J Gilbert, et al.. Novel xylan-binding properties of an engineered family 4 carbohydrate-binding module. *Biochemical Journal*, 2007, 406 (2), pp.209-214. 10.1042/BJ20070128 . hal-00478742

HAL Id: hal-00478742

<https://hal.science/hal-00478742>

Submitted on 30 Apr 2010

HAL is a multi-disciplinary open access archive for the deposit and dissemination of scientific research documents, whether they are published or not. The documents may come from teaching and research institutions in France or abroad, or from public or private research centers.

L'archive ouverte pluridisciplinaire **HAL**, est destinée au dépôt et à la diffusion de documents scientifiques de niveau recherche, publiés ou non, émanant des établissements d'enseignement et de recherche français ou étrangers, des laboratoires publics ou privés.

Novel xylan-binding properties of an engineered family 4 carbohydrate-binding module

Lavinia Cicortas Gunnarsson*, Cedric Montanier†, Richard B. Tunnicliffe‡, Mike P. Williamson‡, Harry J. Gilbert†, Eva Nordberg Karlsson§ and Mats Ohlin*¹

* Department of Immunotechnology, Lund University, BMC D13, SE-221 84 Lund, Sweden

† Institute for Cell and Molecular Biosciences, University of Newcastle upon Tyne, Framlington Place, Newcastle upon Tyne NE2 4HH, UK

‡ Department of Molecular Biology and Biotechnology, University of Sheffield, Firth Court, Western Bank, Sheffield S10 2TN, UK

§ Department of Biotechnology, Lund University, P.O. Box 124, SE-221 00 Lund, Sweden

¹ To whom correspondence should be addressed; fax number: +46-46-2224200; phone number: +46-46-2224322; e-mail: mats.ohlin@immun.lth.se

Short title: Novel xylan-binding properties of an engineered family 4 CBM

Synopsis

Molecular engineering of ligand-binding proteins is commonly used for identification of variants that display novel specificities. Using this approach to introduce novel specificities into carbohydrate-binding modules has not been extensively explored. Here, we report the engineering of a carbohydrate-binding module, CBM4-2 from the *Rhodothermus marinus* xylanase Xyn10A, and the identification of the X-2 variant. As compared to the wild type protein, this engineered module displays higher specificity for the polysaccharide xylan, and a lower preference for binding xylooligomers rather than binding the natural decorated polysaccharide. The mode of binding of X-2 differs from other xylan-specific carbohydrate-binding modules in that it only has one aromatic residue in the binding site that can make hydrophobic interactions with the sugar rings of the ligand. The evolution of CBM4-2 has thus generated a xylan-binding module with different binding properties to those displayed by CBMs available in Nature.

Keywords: carbohydrate-binding module, molecular engineering, xylan, binding specificity, aromatic residues, thermodynamics

Abbreviations used are: AE, affinity electrophoresis; CBM, carbohydrate-binding module; ITC; isothermal titration calorimetry; PBS, phosphate-buffered saline; PCR, polymerase chain reaction.

INTRODUCTION

Carbohydrate binding modules (CBMs) comprise a diverse group of non-catalytic protein modules that are parts of a variety of glycoside hydrolysing or modifying enzymes. Their primary function is to increase the enzyme concentration on the substrate and thereby enhance the efficiency of degradation [1,2]. Recent analysis of CBMs from different species has led to the identification and characterisation of many new modules and today there are several hundred known sequences classified into 46 sequence-based families that display differences in structure and specificity (<http://afmb.cnrs-mrs.fr/CAZY/>). Structural studies on CBMs has led to a greater understanding of how these modules recognise their ligands as reviewed recently by Boraston et al. [3]. Based on the topology of their binding site, CBMs are divided into 3 groups: type A, which has a flat binding surface, type B, which displays a binding cleft, and type C that possesses a solvent-exposed binding pocket or blind canyon [4].

Type B CBMs exhibit a wide range of specificities, recognising single glycan chains comprising hemicellulose (xylans, mannans, galactans and glucans of mixed linkages) and/or non-crystalline cellulose. Recognition is primarily through stacking/hydrophobic interactions between the sugar rings and aromatic residues in the CBMs [5,6] and by the conformational fitting of the glycan chains in the binding cleft [3]. Xylan-binding properties have been reported for several type B CBMs in families 4 [7], 6 [8], 15 [9] and 22 [10]. One of the family 4 modules, CBM4-2 from *Rhodothermus marinus* xylanase Xyn10A, binds strongly to both xylan and β -glucan (barley β -glucan) and has significant affinity for laminarin, lichenan [7] and xyloglucan [11]. The solution structure of this module has been resolved [12], providing insight into the unusually broad specificity displayed by CBM4-2. An important feature of CBM4-2 is the location of two aromatic residues that stack with the sugar rings of the ligand, which are at the top of two flexible loops presumably allowing conformational changes to occur upon binding.

We have previously reported on the molecular engineering of CBM4-2, where a molecular library was created and variants specific for different carbohydrates, as well as a glycoprotein, were successfully identified using a phage-display selection system [11,13]. Characterisation studies of the modules selected for binding to unfucosylated-xyloglucan or an IgG4-molecule confirmed the isolation of highly specific binders based on the molecular scaffold of CBM4-2 [11,14]. *In vitro* molecular evolution of this kind, although attractive, has only rarely been employed to introduce novel specificities into CBMs. It appears that the CBM4-2 scaffold is amenable to such engineering strategies which, in addition, has the

capacity to unlock important information about the function of specificity-determining residues in both the wild-type and engineered proteins.

In the present study we have investigated the properties of a module, X-2, selected from the CBM4-2 molecular library for binding to birchwood xylan. This xylan-specific CBM has lost the wild-type affinity for glucan-containing carbohydrates and displays greatly reduced affinity for xylooligosaccharides. Intriguingly, one of the aromatic residues that sandwich a xylose residue in the ligand has been replaced by an aliphatic residue. This finding illustrates for the first time that a CBM can bind strongly and specifically to xylan in a mode likely to involve only one aromatic residue that can form the stacking interactions with the ligand.

EXPERIMENTAL

Genes, strains and vectors

Genes encoding the wild-type CBM4-2, a CBM-variant selected on xylan, X-2, and a protein-variant, G-4, selected on a human IgG4 molecule (GenBank accession numbers AY347870, AY534546 and AY534558, respectively) as well as variants of the wild-type protein with single mutations were cloned into the expression vector pET-22b(+) (Novagen, Madison, WI, USA). Production of soluble recombinant protein fused to a hexa-histidine tag at the C-terminus was achieved using *Escherichia coli* strain BL21(DE3) (Novagen).

Construction of CBM4-2 variants with single mutations

Site-directed mutagenesis was used to construct mutants of the wild-type CBM4-2 as previously described [14]. Point mutations were introduced in position 69 or 110 by replacing the tryptophan and phenylalanine with alanine, leucine, histidine, tyrosine and, in the case of residue 69, also phenylalanine. Polymerase chain reactions (PCRs) were performed using a set of primers, the AmpliTaq DNA polymerase (Applied Biosystems, Foster City, CA, USA) or DNA polymerase platinum Pfx (Invitrogen, Paisley, UK) and a vector encoding the wild-type CBM4-2 as the template DNA. The PCR-products or intermediary cloned products were digested with *NdeI* and *XhoI* and inserted into suitably restricted pET-22b(+) vector and transformed into competent *E. coli* BL21(DE3). All constructs were validated by DNA sequencing.

Protein production and purification

Production of CBM containing a C-terminal hexa-histidine tag in *E.coli* BL21(DE3) and purification of the soluble protein using metal-ion-affinity chromatography has been described earlier [13]. The concentration of each purified protein was determined spectrophotometrically at 280 nm using extinction coefficients individually calculated for each CBM-variant [15].

Modelling the structure of X-2

A modelled 3D structure of the X-2 module was obtained using CPHmodels 2.0, which is a homology modelling server (<http://www.cbs.dtu.dk/services/CPHmodels/>). Databases were searched through and once the appropriate template, the CBM4-2, was found, neural networks and probability density functions were used to predict protein distance constraints.

Affinity electrophoresis (AE)

The AE method was performed in the Bio-Rad (Hercules, CA, USA) mini-gel apparatus as described earlier for the wild-type CBM4-2 [7]. Purified CBM-variants (3 µg per gel) were separated on native gels, containing no carbohydrate or different concentrations of oat-spelt xylan, lichenan, laminarin, glucomannan or xyloglucan (all purchased from Sigma-Aldrich Inc., St. Louis, MO, USA), β-glucan (Megazyme, Bray, Ireland), or birchwood xylan (Roth, Karlsruhe, Germany). The gels were run at room temperature and 90 V. A kaleidoscope prestained standard (Bio-Rad) was included as a control in each gel and the proteins were detected by staining with Coomassie Brilliant Blue or Simply Blue Safe stain (Invitrogen).

Qualitative binding assay

The binding of the X-2 module to insoluble birchwood xylan was assessed as follows: 30 µg of protein in phosphate-buffered saline (PBS) containing 0.05% (v/v) Tween 20 (incubation buffer) was mixed with 6 mg of slurry containing the insoluble part of birchwood xylan (Sigma) after it had been washed in PBS overnight. The total reaction volume was 200 µl and the mixture was incubated on a head-to-tail shaker for 3 h at room temperature. After centrifugation at 15,100 ×g for 1 minute, the supernatant containing the unbound protein was removed and the xylan was washed in 200 µl of incubation buffer. The bound protein was then eluted by boiling the xylan in 200 µl of 10 % (w/v) of SDS containing 10 % (v/v) β-mercaptoethanol for 15 minutes. The bound, unbound and washed off protein fractions were analysed by SDS-PAGE using 10% (w/v) precast acrylamide gels (NuPAGE from

Invitrogen). An IgG4 specific module (G-4) selected from the same library as X-2 was used as a negative control protein in this experiment. Controls containing only protein but no xylan were performed in parallel to ensure that no precipitation of the proteins occurred during the incubations.

Isothermal titration calorimetry (ITC)

ITC measurements were made at 25 °C following standard procedures [16] using a Microcal Omega titration calorimeter (MicroCal LLC, Northampton, MA, USA). Proteins were dialyzed, extensively, against 50 mM Hepes-HCl buffer, pH 7.5, containing 1 mM CaCl₂, and the ligands (wheat arabinoxylan, barley β-glucan, konjac glucomannan, carob galactomannan, amyloid xyloglucan, Icelandic moss lichenan, xylopentaose (Megazyme) and oat spelt xylan, birchwood xylan, laminarin (Sigma)) were dissolved in the same buffer to minimize the heat of dilution. During a titration experiment, the protein sample (generally 50 μM), stirred at 300 rpm in a 1.4331 ml reaction cell was injected with a single 1 μl aliquot, followed by 24 successive 10 μl aliquots of ligand comprising 0.7 mM of xylopentaose or 0.15% xylan at 300 s intervals. Integrated heat effects, after correction for heats of dilution, were analyzed by nonlinear regression using a single site binding model (Microcal Origin, version 7.0). The fitted data yield the association constant (K_A) and the enthalpy of binding (ΔH). Other thermodynamic parameters were calculated using the standard thermodynamic Equation 1,

$$-RT\ln K_A = \Delta G = \Delta H - T\Delta S \quad (\text{Eq. 1})$$

NMR titrations

All spectra were acquired on a Bruker DRX-500 spectrometer. A sample of uniformly ¹⁵N, ¹³C double-labeled CBM4-2 was prepared at a concentration of 1.2 mM as detailed by Simpson et al. [12]. Titration data for cellohexaose were obtained by a series of 8 ¹⁵N-HSQC spectra, in which the sugar concentration was successively increased until the protein was saturated. Spectral processing and analysis was carried out using Felix (Accelrys, San Diego, CA) and in-house macros. A dissociation constant was calculated for the cellohexaose interaction by fitting to the shift changes [17].

RESULTS

Engineering of a type B CBM

In a previous study we created a molecular library of CBM4-2 by introducing restricted variation in 12 residues within the carbohydrate binding site of the protein [13]. The amino acids targeted were predicted to play a key role in ligand recognition as NMR studies had shown that these residues undergo large chemical shift changes upon titration of wild-type CBM4-2 with xylopentaose [12] or were located in close proximity to such residues. This module, typical of many other xylan-binding CBMs, displays promiscuous ligand recognition, interacting with both *xylo*- and *gluco*-configured saccharides [7]. In order to characterise the residues responsible for interactions with yet another carbohydrate, an NMR study was carried out defining the interaction of wild-type CBM4-2 with cellobiose.

As shown in Figure 1, a number of amino acids have specific chemical shift changes on addition of the oligosaccharide. These residues make up a well-defined cleft on the surface of the protein. Indeed, the binding site is very similar to that previously found for xylopentaose [12]. The largest chemical shift changes (Table 1) demonstrate that the same amino acids are affected by both ligands, with the largest shifts being to the same residues in both cases. In general, cellobiose affects a smaller set of residues than does xylopentaose, as one might expect from its lower affinity (NMR titrations were well fitted to a cellobiose affinity of 1.3 mM, compared to 5.1 μ M for xylopentaose). The residue showing the clearest difference between xylopentaose and cellobiose is E72, which shows a significantly larger maximum shift for cellobiose (Table 1).

The objective of the herein described molecular engineering work on this scaffold has focused on the construction of a molecular variant that displays substantially increased binding specificity for a single ligand. Despite the rather small size of the library (1.6×10^6 clones), CBM-variants with altered binding specificities were successfully isolated using a phage-display system. One of the selected CBMs was X-2, which was isolated using the insoluble part of birchwood xylan as the selection ligand [13]. Compared to wild-type CBM4-2, this module had 8 mutated residues (Figure 2) but since the library mainly included substitutions restricted to related, surface-exposed residues, the overall structure of the CBM is very likely similar to native CBM4-2. This view is supported by its CD spectrum that is compatible with a β -sheet type fold [13] and through the modelling of the structure of X-2 to a reasonable solution (Figure 2B). In common with wild type CBM4-2, X-2 appears to display a cleft that can easily accommodate single carbohydrate chains.

The residues mutated in X-2 are widely spread over the binding site (Figure 2) and in addition to six mutations introduced by library design, the X-2 module had two spontaneous mutations, D70N and W91R that were probably introduced into the protein-encoding gene during the PCR-amplification process. Of the 8 mutations, all of the affected residues but F76L and W91R shifted during NMR titrations with oligosaccharide ligands (Table 1). Interestingly, the residues affected include the two aromatics that are key to binding saccharide ligands, W69 and F110, as well as E72, which shows the biggest difference in shift between xylopentaose and cellobiohexaose (Table 1). Thus, the evolutionary path taken to generate X-2 involved mutation of residues that are involved in the interaction of CBM4-2 with different carbohydrates.

Binding properties of the engineered X-2 module

Initial tests using phage-displayed X-2 protein [13] showed an increased selectivity for the insoluble xylan as compared to other targets, and consequently we initiated a more complete investigation of the binding properties of this module. Soluble X-2, similar to phage-displayed X-2, displayed binding to insoluble birchwood xylan (Figure 3), which was the selection target for this variant [13]. Screening for binding to a range of ligands, using both AE (data not shown) and ITC (Table 2) techniques, and a comparison with the wild-type CBM4-2 demonstrated that the X-2 module exhibited increased specificity for xylan, binding only to the different xylans among the tested carbohydrates and showing no recognition of *gluco*-configured polysaccharides. In addition, ITC-based studies revealed that although X-2 had a slight decrease in affinity for xylans (2-9-fold), it had a much larger, 100-fold, decrease in affinity for xylopentaose as compared to the wild-type CBM4-2 (Table 2) and showed no measurable binding to cellobiohexaose (data not shown). Thus the selection process had been successful in identifying a variant that displayed higher specificity for its natural ligand, xylan, irrespective of whether the backbone of the polysaccharide was relatively unsubstituted (oat spelt xylan) or highly decorated with arabinofuranose side chains (arabinoxylan).

Binding of a CBM to its target is usually driven by enthalpic forces while entropic effects counteract this interaction [3]. This also holds true for the interaction of CBM4-2 and X-2 with both soluble xylan and xylooligosaccharides (Table 2). The thermodynamics revealed that the mutations introduced into the X-2 module had caused relative alternations in enthalpic and entropic contributions to binding most of the targets as compared to the wild-type CBM4-2. The driving forces for binding to the target used in selection of the X-2 variant, birchwood xylan, though, were very similar for both wild-type CBM4-2 and X-2. In

conclusion, the evolution pathway used to select for X-2 substantially tightened the ligand specificity of the selected CBM and affected the thermodynamics of binding to some xylan variants as compared to wild-type CBM4-2.

Single point mutants of stacking residues in wild-type CBM4-2

The X-2 module is characterised by mutations in both surface exposed aromatic residues, which in the wild type protein are believed to make important stacking interactions with the bound ligand. In order to investigate the importance of these residues in carbohydrate recognition, W69 and F110 in wild-type CBM4-2 were replaced with alanine, leucine, histidine or tyrosine and in position 69 also with phenylalanine. Except for alanine, all these amino acids were allowed by our library design in both positions, and F69 and L110 were found in the X-2 variant.

Binding of the mutated CBM-variants to both xylan and β -glucan was studied using affinity electrophoresis (Figure 4). Mutants that had the tryptophan in position 69 replaced with other aromatic residues or histidine showed some decrease in affinity for both xylan and β -glucan. Alanine and leucine in that same position caused a more substantial drop in the affinity for xylan and a complete loss of binding to β -glucan indicating that the character of the residue 69 of CBM4-2 is very important for ligand binding, but the presence of the tryptophan is not an absolute requirement for carbohydrate recognition.

Replacing the phenylalanine in position 110 had almost the same effects on ligand binding as mutations in W69, except for the single mutant F110L, that interestingly still had affinity for xylan but displayed no binding to β -glucan. Since leucine is the amino acid found in position 110 of the X-2 module, these findings strongly suggest that this mutation is one of the factors responsible for the loss of binding to β -glucan.

DISCUSSION

The X-2 module that was evolved in this study has lost the affinity for glucan-containing polysaccharides displayed by the wild-type CBM4-2 and thus exhibits higher specificity for xylan. Using insoluble xylan as a target during the selection of this module imposed a higher pressure on isolation of a CBM with a higher binding preference for the decorated polysaccharide over the oligosaccharide. This is clearly indicated by the 100-fold decrease in affinity for xylopentose as compared to the wild-type CBM4-2, whereas the affinity for xylan was only 2-9-fold lower.

Binding of CBM4-2, X-2 and other type B CBMs to xylan is enthalpically driven [5,6,10], indicating that the hydrogen bonds between the residues buried in the binding cleft and the ligand are very important for overall affinity. The lower ΔH of binding suggests the presence of less overall enthalpic forces in the X-2 ligand binding compared to CBM4-2. Two residues that were believed to be involved in hydrogen bonding of the wild-type protein to xylan, E72 and E118, [12] were mutated in the X-2 module to glutamine and histidine, respectively, and it is possible that these mutations influenced the hydrogen bonding network between the CBM and ligand.

In addition to hydrogen bonds, hydrophobic interactions between aromatic residues in the binding sites of CBMs and the sugar rings of the ligand play a pivotal role in carbohydrate recognition [5,18-20]. Two such residues, W69 and F110, are situated on loops edging the binding cleft of CBM4-2 and they are most likely involved in ligand binding through stacking interactions with the sugar rings of the target carbohydrate [12]. These residues were both mutated in the X-2 module, the tryptophan was replaced by the aromatic amino acid phenylalanine while at position 110 the phenylalanine was substituted by leucine, a hydrophobic but non-aromatic amino acid. These mutations are most likely involved in the change in binding specificity of the CBM-scaffold and the consequently improved xylan-specificity displayed by the X-2 module. Replacing phenylalanine in position 110 with leucine led to the complete loss of binding of wild-type CBM4-2 to β -glucan and had presumably the same effect in X-2. The residue at position 69 was proved to be important for ligand binding of CBM4-2 and although tryptophan is replaced by phenylalanine in the X-2 module, the aromatic character of the substituted residue and thus its capacity to stack against the sugar moieties of the carbohydrate polymer are retained. Phenylalanine in position 69 is thus suggested to be one of the key residues in the interaction of the X-2 module with the xylan chain.

The exact same combination of mutations in positions 69 and 110 (W69F and F110L) were also found in two clones selected from the molecular library of CBM4-2 for binding to an IgG4 molecule [13,14]. One of these modules, G-4, had completely lost its capacity to recognise xylan and all other carbohydrates that the wild-type CBM4-2 was shown to have an affinity for [14]. The affinity for xylan exhibited by X-2 but not by G-4 is thus a result of differences in the sequence between these modules other than at positions 69 and 110 (Figure 2C). Structural studies of the X-2 module alone and in complex with the ligand are needed to identify the residues in this particular module that confer high specificity for xylan.

Similarities in the location of the extended binding cleft and the overall protein fold of members belonging to the families CBM4, CBM6, CBM15 and CBM22 has led to proposal that these proteins should be grouped into a superfamily [21]. The CBM22 module of *Clostridium thermocellum* xylanase Xyn10B [20] is a xylan-specific CBM that, similar to wild-type CBM4-2 in this study and family 6 CBMs, sandwiches a single xylose molecule between two aromatic residues, and this interaction makes a significant contribution to xylan recognition. The mechanism of ligand recognition in this superfamily is not, however, completely conserved. Thus, the tryptophans in the xylan-binding CBM15 derived from *Pseudomonas cellulosa* xylanase Xyn10C are located on one side of the binding cleft leading to formation of stacking interactions to only one face of the ligand chain [9]. This type of binding is also found in the X-2 module engineered in this study since it has lost the ability of wild-type CBM4-2 to sandwich the xylan chain between two aromatic residues. In X-2 it is only phenylalanine in position 69 that can form the stacking interaction between itself and the ligand. The comparably high affinity ($K_A = 10^5 \text{ M}^{-1}$ for oat-spelt xylan) of the X-2 module for xylan demonstrates that only one residue, instead of the usual two or three amino acids that make the normally critical stacking interactions with the ligand, is required for binding in this protein. Thus, molecular evolution strategies targeting binding sites of this type can successfully explore variants that lack the multiple aromatic residues in the binding site of wild-type CBMs. This substantially extends the possible variation and it may even contribute to the improved specificity profile of X-2, that can be exploited e.g. in analytical applications (Filonova et al., submitted for publication).

In summary, we demonstrate the engineering process of a CBM that had broad ligand specificity into a xylan-specific CBM. The evolution of the xylan-specificity has not only led to the loss of glucan recognition but has also changed the binding characteristics of the protein compared to other xylan-binding CBMs.

ACKNOWLEDGEMENTS

We would like to thank Prof. Olle Holst and Dr. Mats Andersson for fruitful discussions and Linda Dexlin and Kristina Lundberg for their contribution to the site-directed mutagenesis study. The Swedish Research Council (VR) is gratefully acknowledged for financial support.

REFERENCES

- 1 Bolam, D. N., Ciruela, A., McQueen-Mason, S., Simpson, P., Williamson, M. P., Rixon, J. E., Boraston, A., Hazlewood, G. P. and Gilbert, H. J. (1998) Pseudomonas cellulose-binding domains mediate their effects by increasing enzyme substrate proximity. *Biochem. J.* **331** 775-781
- 2 Gilkes, N. R., Warren, R. A., Miller, R. C., Jr. and Kilburn, D. G. (1988) Precise excision of the cellulose binding domains from two *Cellulomonas fimi* cellulases by a homologous protease and the effect on catalysis. *J. Biol. Chem.* **263**, 10401-10407
- 3 Boraston, A. B., Bolam, D. N., Gilbert, H. J. and Davies, G. J. (2004) Carbohydrate-binding modules: fine-tuning polysaccharide recognition. *Biochem. J.* **382**, 769-781
- 4 Boraston, A. B., McLean, B. W., Kormos, J. M., Alam, M., Gilkes, N. R., Haynes, C. A., Tomme, P., Kilburn, D. G. and Warren, R. A. J. (1999) Carbohydrate binding modules: Diversity of structure and function. In *Recent Advances in Carbohydrate Engineering* (Gilbert, H. J., Davies, G. J., Svensson, B. and Henrissat, B., eds.), pp. 202-211, Royal Society of Chemistry, Cambridge
- 5 Pell, G., Williamson, M. P., Walters, C., Du, H., Gilbert, H. J. and Bolam, D. N. (2003) Importance of Hydrophobic and Polar Residues in Ligand Binding in the Family 15 Carbohydrate-Binding Module from *Cellovibrio japonicus* Xyn10C. *Biochemistry* **42**, 9316-9323
- 6 Xie, H., Bolam, D. N., Nagy, T., Szabo, L., Cooper, A., Simpson, P. J., Lakey, J. H., Williamson, M. P. and Gilbert, H. J. (2001) Role of hydrogen bonding in the interaction between a xylan binding module and xylan. *Biochemistry* **40**, 5700-5707
- 7 Abou Hachem, M., Nordberg Karlsson, E., Bartonek-Roxa, E., Raghothama, S., Simpson, P. J., Gilbert, H. J., Williamson, M. P. and Holst, O. (2000) Carbohydrate-binding modules from a thermostable *Rhodothermus marinus* xylanase: cloning, expression and binding studies. *Biochem. J.* **345**, 53-60.
- 8 Czjzek, M., Bolam, D. N., Mosbah, A., Allouch, J., Fontes, C. M., Ferreira, L. M., Bornet, O., Zamboni, V., Darbon, H., Smith, N. L., Black, G. W., Henrissat, B. and Gilbert, H. J. (2001) The location of the ligand-binding site of carbohydrate-binding modules that have evolved from a common sequence is not conserved. *J. Biol. Chem.* **276**, 48580-48587
- 9 Szabo, L., Jamal, S., Xie, H., Charnock, S. J., Bolam, D. N., Gilbert, H. J. and Davies, G. J. (2001) Structure of a family 15 carbohydrate-binding module in complex with

- xylopentaose. Evidence that xylan binds in an approximate 3-fold helical conformation. *J. Biol. Chem.* **276**, 49061-49065
- 10 Charnock, S. J., Bolam, D. N., Turkenburg, J. P., Gilbert, H. J., Ferreira, L. M., Davies, G. J. and Fontes, C. M. (2000) The X6 "thermostabilizing" domains of xylanases are carbohydrate-binding modules: structure and biochemistry of the *Clostridium thermocellum* X6b domain. *Biochemistry* **39**, 5013-5021
 - 11 Gunnarsson, L. C., Zhou, Q., Montanier, C., Karlsson, E. N., Brumer, H., 3rd and Ohlin, M. (2006) Engineered xyloglucan specificity in a carbohydrate-binding module. *Glycobiology*
 - 12 Simpson, P. J., Jamieson, S. J., Abou-Hachem, M., Karlsson, E. N., Gilbert, H. J., Holst, O. and Williamson, M. P. (2002) The solution structure of the CBM4-2 carbohydrate binding module from a thermostable *Rhodothermus marinus* xylanase. *Biochemistry* **41**, 5712-5719.
 - 13 Cicortas Gunnarsson, L., Nordberg Karlsson, E., Albrekt, A. S., Andersson, M., Holst, O. and Ohlin, M. (2004) A carbohydrate binding module as a diversity-carrying scaffold. *Protein Eng. Des. Sel.* **17**, 213-221
 - 14 Cicortas Gunnarsson, L., Dexlin, L., Karlsson, E. N., Holst, O. and Ohlin, M. (2006) Evolution of a carbohydrate binding module into a protein-specific binder. *Biomol. Eng.* **23**, 111-117
 - 15 Gill, S. C. and von Hippel, P. H. (1989) Calculation of protein extinction coefficients from amino acid sequence data. *Anal. Biochem.* **182**, 319-326
 - 16 Flint, J., Nurizzo, D., Harding, S. E., Longman, E., Davies, G. J., Gilbert, H. J. and Bolam, D. N. (2004) Ligand-mediated dimerization of a carbohydrate-binding molecule reveals a novel mechanism for protein-carbohydrate recognition. *J. Mol. Biol.* **337**, 417-426
 - 17 Charlton, A. J., Baxter, N. J., Khan, M. L., Moir, A. J., Haslam, E., Davies, A. P. and Williamson, M. P. (2002) Polyphenol/peptide binding and precipitation. *J. Agric. Food Chem.* **50**, 1593-1601
 - 18 Nagy, T., Simpson, P., Williamson, M. P., Hazlewood, G. P., Gilbert, H. J. and Orosz, L. (1998) All three surface tryptophans in Type IIa cellulose binding domains play a pivotal role in binding both soluble and insoluble ligands. *FEBS Lett.* **429**, 312-316
 - 19 Ponyi, T., Szabo, L., Nagy, T., Orosz, L., Simpson, P. J., Williamson, M. P. and Gilbert, H. J. (2000) Trp22, Trp24, and Tyr8 play a pivotal role in the binding of the family 10

- cellulose-binding module from *Pseudomonas* xylanase A to insoluble ligands. *Biochemistry* **39**, 985-991
- 20 Xie, H., Gilbert, H. J., Charnock, S. J., Davies, G. J., Williamson, M. P., Simpson, P. J., Raghothama, S., Fontes, C. M., Dias, F. M., Ferreira, L. M. and Bolam, D. N. (2001) *Clostridium thermocellum* Xyn10B carbohydrate-binding module 22-2: the role of conserved amino acids in ligand binding. *Biochemistry* **40**, 9167-9176
- 21 Sunna, A., Gibbs, M. D. and Bergquist, P. L. (2001) Identification of novel beta-mannan- and beta-glucan-binding modules: evidence for a superfamily of carbohydrate-binding modules. *Biochem. J.* **356**, 791-798

Table 1 Backbone amide chemical shift changes on addition of ligands to CBM4-2

Residue	Xylopentaose		Cellohexaose	
	H	N	H	N
Q111 ^{a,b}	0.29	1.22	0.21	3.17
R115 ^a	0.09	1.36	0.15	0.68
R142 ^a	0.25	0.46	0.25	0.94
F110 ^{a,b}	0.06	0.80	0.06	0.61
E112 ^a	0.10	0.48	0.38	0.07
E118 ^a	0.08	0.38	NS ^c	NS
W69 ^{a,b}	0.03	0.44	0.19	0.63
E72 ^{a,b}	0.08	0.29	0.04	1.39
H146 ^a	NS	NS	0.07	0.27
D70 ^b	0.11	0.26	NS	NS

^a Residues targeted by the library design. These residues are listed in order of largest weighted shift change with xylopentaose.

^b Residues modified in the X-2 module.

^c NS, no shift or a value below the cutoff set for a significant shift change.

Table 2 Affinities and thermodynamic properties of CBM-carbohydrate interactions as determined by ITC

Ligand	Protein	K_A (M^{-1})	ΔH ($kcal.mol^{-1}$)	$T\Delta S$ ($kcal.mol^{-1}$)	n^a
xylopentaose	CBM4-2	5.13×10^6	-19.08 ± 0.06	-9.92	0.95 ± 0.002
	X2	4.80×10^4	-12.65 ± 0.89	-6.26	1.08 ± 0.05
Birchwood xylan	CBM4-2	1.71×10^5	-15.21 ± 0.29	-8.07	1.06 ± 0.015
	X2	8.39×10^4	-14.94 ± 1.19	-8.22	1.09 ± 0.066
Oat-spelt xylan	CBM4-2	6.67×10^5	-17.18 ± 0.39	-9.23	1.07 ± 0.002
	X2	1.15×10^5	-10.53 ± 1.01	-3.62	0.91 ± 0.06
Weat arabinoxylan	CBM4-2	1.92×10^5	-15.69 ± 0.40	-8.46	1.00 ± 0.019
	X2	2.19×10^4	-18.95 ± 0.71	-13.02	1.01 ± 0.025
β -glucan	CBM4-2	5.63×10^4	-12.69 ± 0.40	-6.20	1.03 ± 0.025
	X2	weak ^b			
Glucomannan	CBM4-2	1.65×10^3	-16.75 ± 32.4	-12.34	1.02 ± 1.7
	X2	N.B. ^c			
Galactomannan	CBM4-2	N.B.			
	X2	N.B.			
Lichenan	CBM4-2	weak			
	X2	N.B.			
Laminarin	CBM4-2	7.82×10^3	-27.14 ± 9.04	-21.82	0.995 ± 0.26
	X2	N.B.			
Xyloglucan	CBM4-2	weak			
	X-2	N.B.			

^a n is the number of binding sites on the protein.

^b extremely weak binding was detected but too low to quantify

^c no binding

FIGURE LEGENDS

Figure 1 CBM4-2 binding to cellohexaose

HSQC (heteronuclear single quantum coherence spectroscopy) titration of wild-type CBM4-2 with cellohexaose. Residues are coloured from green (free) through to blue (bound), and residues with significant chemical shift changes are labelled.

Figure 2 Differences between CBM4-2 and X-2

NMR-structure of CBM4-2 (1K45.pdb) (A) and a model of X-2 (B) displaying the amino acids mutated in the X-2 module as compared to the wild-type CBM4-2. The arrows show the aromatic residues W69 and F110 of the wild-type protein and F69 of X-2. Differences in the primary sequence between CBM4-2, X-2 and the negative control module G-4 used in some experiments are shown in C.

Figure 3 Binding to insoluble xylan

Qualitative binding of the X-2 and G-4 (a CBM-variant specific for human IgG4) modules to insoluble birchwood xylan. The proteins (lane 1) were mixed with the xylan and after removing the unbound fractions (lane 2), the xylan was washed once with incubation buffer (lane 3) before the bound proteins were eluted by boiling in SDS (lane 4). As expected, the X-2 module had a clear fraction of protein eluted from the xylan, whereas G-4, which has no affinity for xylan and served as a negative control in this assay, had all the protein present in the incubation supernatant.

Figure 4 Xylan and β -glucan binding assessed by affinity electrophoresis

Native affinity electrophoresis was performed in the absence of ligand (A) or in the presence of oat spelt xylan (B) or barley β -glucan (C) using wildtype (wt) CBM4-2 or soluble variants thereof. A kaleidoscope prestained standard was used as a non-interacting migration control.

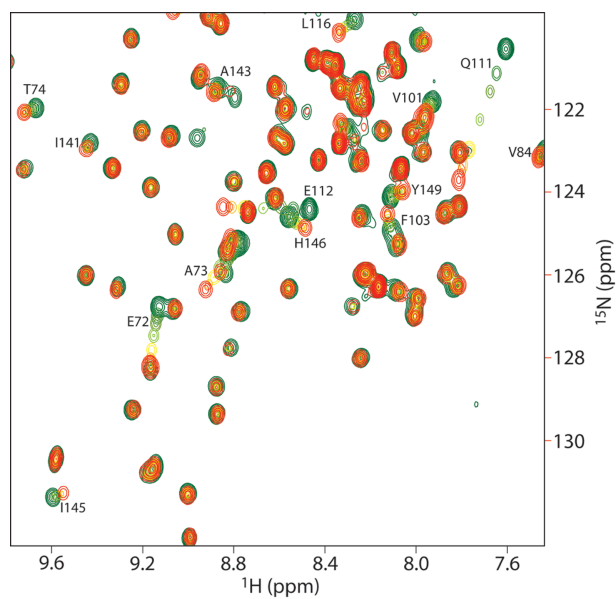


Figure 1

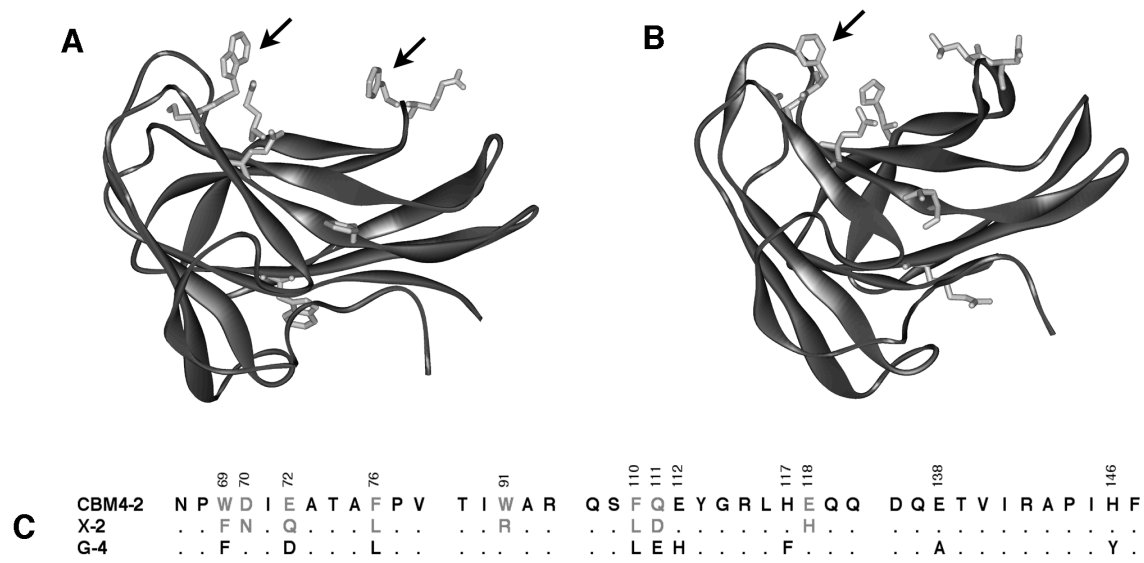


Figure 2

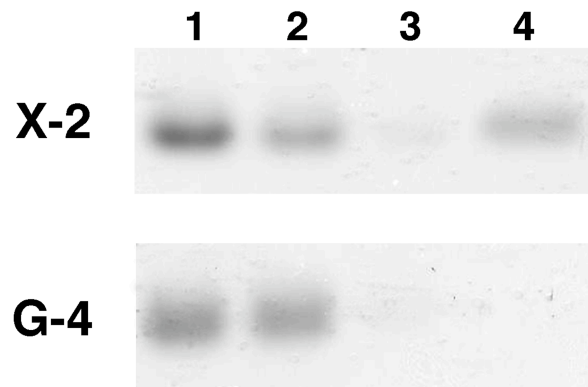


Figure 3

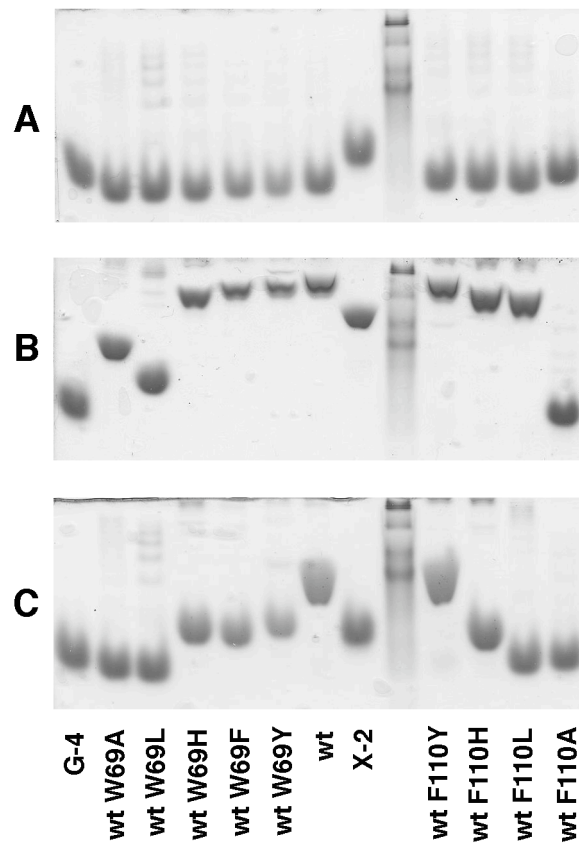


Figure 4