



HAL
open science

Accessory proteins assist exonuclease-deficient bacteriophage T4 DNA Polymerase in replicating past an abasic site

Giuseppina Blanca, Emmanuelle Delagoutte, Nicolas Tanguy Le Gac, Neil P. Johnson, Giuseppe Baldacci, Giuseppe Villani

► **To cite this version:**

Giuseppina Blanca, Emmanuelle Delagoutte, Nicolas Tanguy Le Gac, Neil P. Johnson, Giuseppe Baldacci, et al.. Accessory proteins assist exonuclease-deficient bacteriophage T4 DNA Polymerase in replicating past an abasic site. *Biochemical Journal*, 2006, 402 (2), pp.321-329. 10.1042/BJ20060898 . hal-00478619

HAL Id: hal-00478619

<https://hal.science/hal-00478619>

Submitted on 30 Apr 2010

HAL is a multi-disciplinary open access archive for the deposit and dissemination of scientific research documents, whether they are published or not. The documents may come from teaching and research institutions in France or abroad, or from public or private research centers.

L'archive ouverte pluridisciplinaire **HAL**, est destinée au dépôt et à la diffusion de documents scientifiques de niveau recherche, publiés ou non, émanant des établissements d'enseignement et de recherche français ou étrangers, des laboratoires publics ou privés.

Accessory proteins assist exonuclease-deficient bacteriophage T4 DNA Polymerase in replicating past an abasic site.

Giuseppina Blanca^{1 #}, Emmanuelle Delagoutte^{2 #}, Nicolas Tanguy Le Gac¹, Neil P. Johnson¹, Giuseppe Baldacci² and Giuseppe Villani¹

¹ Institut de Pharmacologie et Biologie Structurale CNRS- UMR 5089, 205 route de Narbonne , 31077 Toulouse cedex 4, France

² CNRS UMR 2027-Institut Curie, Batiment 110, Centre Universitaire d'Orsay, France.

these authors contributed equally to the work

SYNOPSIS

Replicative DNA polymerases, such as T4 pol, possess both elongation and 3'-5' exonuclease proofreading catalytic activities. They arrest at the base preceding DNA damage on the coding DNA strand and specialized DNA polymerases have evolved to replicate across the lesion by a process known as TransLesion DNA Synthesis (TLS). TLS is considered to take place in two steps that often require different enzymes, insertion of a nucleotide opposite the damaged template base followed by extension from the inserted nucleotide. We and others have observed that inactivation of the 3'-5' exonuclease function of T4 pol enables TLS across a single site-specific abasic (AP) lesion. Here we report a role for auxiliary replicative factors in this reaction. When replication is carried out with a large excess of DNA template over DNA polymerase in absence of auxiliary factors, the *exo*⁻ polymerase inserts one nucleotide opposite the AP site but does not extend past the lesion. Addition of the clamp processivity factor and the clamp loader complex restores primer extension across an AP lesion on a circular AP-containing DNA substrate by the *exo*⁻ polymerase, but has no effect on the wt enzyme. Hence T4 DNA pol exhibits a variety of responses to DNA damage. It can behave as a replicative pol or (in the absence of proofreading activity) as a specialized DNA polymerase and carry out TLS. As a specialized polymerase it can function either as an inserter or (with the help of accessory proteins) as an extender. The capacity to separate these distinct functions in a single DNA polymerase provides insight into the biochemical requirements for translesion DNA synthesis.

INTRODUCTION

Progression of replicative, high fidelity DNA polymerases (pols) is usually arrested at lesions in the DNA template. In contrast, recently discovered specialized DNA polymerases are able to replicate past DNA damage (Translesion DNA synthesis or TLS). These specialized polymerases can be accurate (error free) or mutagenic (error prone) during TLS. The prevailing model is that TLS is a multistep reaction requiring the presence of a DNA polymerase processivity factor and, in many cases, two types of specialized polymerases. One polymerase, called an inserter, efficiently inserts a nucleotide in front of the lesion; another is capable of elongating the primer after insertion, and is called an extender (for recent reviews see [1, 2]). However, specialized prokaryotic DNA polymerases have been reported that carry out both the insertion and extension reactions [1] and among the eukaryotic pols, POLQ can also efficiently perform both processes [3].

The incapacity of the replicative polymerases to accommodate damaged bases in their active sites, a capability that the specialized polymerases possess, is widely accepted as a major determinant of the different response of these enzymes to DNA damage, particularly to highly distorting DNA lesions [4]. In addition, replicative pols invariably have a 3'-5' exonuclease activity to remove mismatched base-pairs that are often a consequence of TLS. In contrast, all the specialized polymerases lack this "proofreading" activity.

Many years ago, *in vitro* experiments led to the hypothesis that 3'-5' exonuclease activity could prevent TLS by forcing the DNA polymerase into a futile cycle of incorporation/excision, a process referred to as polymerase "idling" [5]. This notion was later supported by *in vivo* evidence showing that exonuclease-deficient mutants of *Escherichia coli* pol III can replicate past certain DNA lesions, even in the absence of its corresponding specialized polymerase, pol V [6-8]. Likewise, recent experiments have shown that inactivation of the proofreading reaction associated with replicative pol δ causes a mutator and cancer phenotype in mice [9].

Finally, a replicative polymerase that is unable to bypass a lesion on the template DNA will eventually dissociate from the DNA and terminate attempted elongation. Hence stabilizing the replication complex by DNA polymerase accessory proteins could be a third component that favors TLS.

The replicative T4 DNA polymerase exhibits both proofreading and elongation catalytic activities and we study this polymerase to understand TLS of primer/template (P/T) DNA containing one of the most frequent endogenous DNA lesions, an apurinic site (AP). Elongation by the wt T4 DNA polymerase arrests at an AP site [10] and we have recently observed that inactivation of its 3'-5' exonuclease activity allows *in vitro* TLS across this lesion, demonstrating that the absence of proofreading can contribute to the proficiency of TLS by T4 pol [11]. Here we present evidence for the role of accessory proteins in this process.

EXPERIMENTAL

Proteins and chemicals.

Wild-type T4 DNA polymerase (gp43wt) and T4 DNA polymerase deficient in the 3'-5' exonuclease activity (gp43D219A, *exo*⁻) were purified and stored as described elsewhere [12, 13]. The gp45 processivity clamp and the gp44/62 clamp loader were purified and characterized as described elsewhere [14, 15]. Purification and characterization of the gp32 single-stranded DNA binding protein was performed as described [16, 17]. A gel of the proteins used in this study is presented in Figure 1 of ref 11. Protein concentrations were determined by UV absorbance at 280 nm, using molar extinction coefficients of $1.3 \times 10^5 \text{ M}^{-1} \text{ cm}^{-1}$, $1.91 \times 10^4 \text{ M}^{-1} \text{ cm}^{-1}$, $1.23 \times 10^5 \text{ M}^{-1} \text{ cm}^{-1}$ and $3.7 \times 10^4 \text{ M}^{-1} \text{ cm}^{-1}$, for monomeric gp43, monomeric gp45, gp44/62 complex and monomeric gp32, respectively. All protein concentrations are reported in units of moles protein monomers.

T4 polynucleotide kinase and DNA ligase were from New England Biolabs. dSpacer CE Phosphoramidite (tetrahydrofuran moiety) was purchased from Glen Research. Gamma ^{32}P ATP (4500 Ci/mmol) was from ICN. Ultrapure dNTPs and ATP were from Amersham Bioscience.

DNA substrates

The sequences of the DNA templates/primers used in the study are shown in Figure 1. The 60-mers linear templates A and B, either undamaged or containing a tetrahydrofuran moiety mimicking an abasic site (X), and the corresponding primers were chemically synthesized and purified on a 15% polyacrylamide 7M urea/30% formamide gel. After elution and ethanol precipitation, their concentrations were determined spectrophotometrically.

The 100-mer circular templates C and D were constructed as follows. The linear substrates C (intact) and D (containing the tetrahydrofuran moiety, indicated with an X) have the following sequence: 5'-TAAGGTAGTAGTATTATAAAATTATGGAGGTTTT(G/X)AGTGGGAAATAAAATATAGTAAAGATTAGTAAAGGATTGAAATTATGTAATTGAAAGTAAATGTAGT-3'. 2 μM of each oligonucleotide were phosphorylated separately in 430 μl of polynucleotide kinase buffer containing 1 mM ATP and 40 units of T4 polynucleotide kinase for 30 minutes at 37°C. Subsequently, 40 units more of kinase were added and the incubation continued for an additional 30 minutes followed by 10 minutes at 75°C. A 40-mer scaffold oligonucleotide (5'-TTTATAACTACTACTACCTTAACCTTACTTTCAATTA-3'), complementary to the first 5'-end and the last 3'-end 20 bases of both 100-mers, was then added to each reaction mixture at a concentration of 2 μM , together with NaCl to a final concentration of 50 mM. The mixtures were heated at 85°C for 10 minutes and then slowly cooled to room temperature. The reaction mixtures were brought to 1X DNA ligase buffer, supplemented with 50 mM ATP, in a final volume of 2 ml and 600 Weiss units of T4 DNA ligase were added to each reaction mixture. Samples were incubated at 37°C for 1 hour followed by 12 hours at 16°C. The reaction mixtures were ethanol precipitated and 100-mer minicircles were then purified from a 10% polyacrylamide/7 M urea/30% formamide gel after visualization of the material on fluorescent silica plates by UV shadowing. After elution from the gel and ethanol precipitation, the concentration of the substrates was determined spectrophotometrically. The templates were then hybridized to a 17 mer primer. Substrate E was obtained by hybridizing templates D to an 18 mer primer. All the primers were ^{32}P labeled at their 5' termini and hybridized to the respective templates at equimolar concentrations.

Primer extension assays

DNA polymerase reaction (10 μl) contained 25 mM Hepes-HCl (pH 7.5), 5 mM MgCl_2 , 1 mM DTT, 200 $\mu\text{g/ml}$ BSA, 5% glycerol, 40 mM NaCl and 100 μM of each of the four deoxynucleotides and the indicated concentrations of enzymes and substrates. When performed with the DNA polymerase alone, the reaction was initiated by the addition of the enzyme. When other replication proteins were present, 1 mM ATP was also added. gp45, gp44/66 and gp32 were first incubated for 1 minute at 37°C in the presence of the DNA substrate and polymerization reactions were then initiated by the addition of the indicated amounts of T4 DNA polymerase. Reactions were incubated at 37°C for the indicated time and quenched by the addition of 3 μl stop buffer (90% formamide, 0.1% xylene cyanol, 0.1% bromophenol blue, 1 mM EDTA). The reaction products were resolved on 15% polyacrylamide / 7 M urea/30% formamide gels for the linear template and 13% gel for the circular template. Quantification of the results was performed by using a Molecular Dynamics STORM 840 PhosphorImager and ImageQuant software. The extent of translesion synthesis was calculated as the ratio of the intensity of bands that lie in front or downstream of the lesion site to the intensity of all bands, excluding the primer. The extent of insertion in front of the lesion was calculated as the ratio of the intensity of the band incorporated in front of the lesion site to the intensity of all bands, excluding the primer. The extent of extension past the lesion was calculated as the ratio of the intensity of bands downstream of the lesion to the intensity of the band in front of the lesion.

RESULTS

Inactivation of the 3'-5' exonuclease activity of the T4 DNA polymerase leads to either single nucleotide incorporation in front of an abasic site or extension past the lesion depending on the enzyme/template ratio used.

We have previously shown that inactivation of the 3'-5' exonuclease activity associated with the replicative DNA polymerase of the bacteriophage T4 allows both insertion and extension past an AP site when molar ratios of polymerase/DNA template are in the range of 0.1 to 3 [11]. These results show an intrinsic capacity of the exo^- polymerase to replicate past an AP site which is not shared by its wt form. However, it seemed reasonable that a lower ratio of enzyme/template might correspond better to physiological conditions. We therefore decided to investigate the capacity of low concentrations of exonuclease-deficient and wild type T4 polymerases to elongate a 5'- P^{32} -labeled primer DNA annealed to templates containing an AP lesion. The substrates used in this study are depicted in Figure 1. The two primers shown on the circular template are for different types of experiments, running start (Figure 1D, a 17-mer located 51 nucleotides downstream the lesion) or standing start (Figure 1E, an 18-mer, whose 3'-OH is located at the nucleotide that precedes the lesion). In the exonuclease deficient polymerase the aspartic acid residue at position 219 that provides one of the four essential carboxylate residues for the two-metal ion exonuclease activity has been replaced by alanine [18]. We examined our enzyme preparations for exonuclease activity; wild type T4 gp43 polymerase readily digested the labeled primer of a 47/25-mer DNA/primer, while no digestion was seen with the exo^- gp43D219A mutant (data not shown).

After primer extension, the newly synthesized DNA products were resolved by denaturing polyacrylamide gel electrophoresis and visualized on a PhosphorImager. Lanes 1 to 4 of Figure 2A show representative data for the replication of linear templates A and B by the wt and exo^- forms of T4 DNA polymerase. As can be seen, both DNA polymerases catalyzed similar elongation of the undamaged substrate A at the lowest concentrations of enzyme investigated; we also found no difference in activity at higher concentrations of enzymes (data not shown).

Replication of the AP-containing linear DNA template B by the wild type polymerase showed that the enzyme was blocked at the base preceding the lesion at all the concentrations used (lanes 5 to 8, Figure 2A). Quantification of the data indicates that the extent of blockage as a fraction of total DNA synthesis did not vary with the amount of enzyme (Figure 2B). The faint band observed at the position of the full-length product is the result of a small amount of undamaged DNA in our preparation of substrate B [11].

Replication of substrate B with the exonuclease-deficient polymerase gave a different result (Figure 2A, lanes 9 to 12). Two distinct patterns were apparent. At the higher concentrations of enzyme (lanes 11 and 12) we observed both incorporation in front of the lesion and extension beyond it, which reached up to 80% of the total elongated primers (Figure 2B), in agreement with our previous findings [11]. At the lower concentrations however, the polymerase catalyzed incorporation of nucleotide opposite the AP site but was unable to extend the resulting primer, even though we note an increase in the capacity to insert in front of the lesion as a function of the polymerase concentration (Figure 2A, lanes 9 and 10 and Figure 2B). The data in lanes 9 and 10 of Figure 2A were obtained with a molar ratio of template/enzyme of 3000 and 300 respectively, and similar results were also observed for ratios of template/enzymes ratios between these values (data not shown).

The circular or linear structure of the template DNA can affect the efficiency of translesion synthesis [19]. We therefore examined the capacities of increasing concentrations of wt and exo^- T4 DNA polymerases to replicate past an AP site on a circular DNA substrate (Figure 1C and D). Both polymerases efficiently replicated the undamaged circular substrate at enzyme concentrations of 0.1 and 1 nM (Figure 3A, lanes 2-5). In all cases, the length of the product synthesized by wt enzyme was the same as the template strand, i.e. 100 nt (lanes 2 and 3). In contrast, the exonuclease-deficient polymerase synthesized longer products (lanes 4 and 5), thereby showing an increased capacity of strand displacement compared to the wt enzyme, as previously reported for the T4 polymerase with a shorter circular template and for other exonuclease-deficient polymerases [11].

Replication of damaged circular template D by the wt enzyme showed arrest at the base preceding the lesion, similar to results found with the linear template B. No incorporation in front of the AP site was observed with any of the concentrations of wt polymerase used (Figure 3A, lanes 6 to 10, and Figure 3B). Replication of substrate D by the exonuclease-deficient enzyme gave

substantial TLS products at the highest concentrations of enzyme (Figure 3A, lanes 14 and 15, and Figure 3B); these products are longer than the full length template, as observed for the undamaged substrate. However, the lowest enzyme concentrations were unable to extend from the primer 3'-OH terminus, even though the polymerase incorporated increasing amounts of nucleotide in front of the AP site in a concentration-dependent fashion (lanes 11 to 13 and Figure 3 B), thus reproducing the results observed with the linear template.

It is possible that primer extension past the lesion is kinetically inhibited at low concentrations of enzyme. We therefore asked whether the exonuclease-deficient T4 polymerase could eventually extend from the nucleotide inserted in front of the lesion at longer incubation times. Figure 4A shows that two concentrations of *exo*⁻ polymerase that were unable to perform translesion synthesis after 30 min incubation did not extend the lesion-inserted nucleotide during up to 90 minutes of incubation. We observed a moderate augmentation in the amount of nucleotide incorporated in front of the lesion during these experiments (Figure 4B), showing that the enzyme was active throughout the incubation. As expected, no insertion in front of the AP site was detected with the wt polymerase.

Taken together these results show that at low protein concentrations, the exonuclease-deficient form of the T4 polymerase can insert one nucleotide in front of an abasic site but cannot further extend the primer from its 3'-OH.

Addition of the replication factors gp45 and gp44/62 allows extension by the exonuclease-deficient T4 DNA polymerase past the abasic site.

During DNA replication, the T4 DNA polymerase associates with auxiliary replicative factors [20]. These factors include a homotrimeric processivity factor (gp45), a heterodimeric clamp loader (gp44/gp66) and single-stranded DNA binding protein (gp32); their combined action increases binding of the enzyme to DNA and processivity of replication, and could thereby influence the capacity of the T4 polymerase to replicate past a lesion. We previously reported that addition of these factors did not modify the intrinsic capacity of high concentrations of wt or *exo*⁻ T4 DNA polymerase to replicate past an abasic site on linear or circular DNA substrates [11].

Here we have carried out experiments with low concentrations of enzyme where the *exo*⁻ polymerase inserts one nucleotide in front of the lesion but is unable to proceed beyond. Representative gels obtained with circular running start or standing start damaged templates D and E are shown in Figures 5A and 6A. Lane 8 of Figure 5A shows a reaction with all the replicative factors but in the absence of the polymerase. A minor contaminating polymerase activity was detected, but it appears to be negligible compared to the activity shown by the polymerase alone in lanes 1 or 9 of Figure 5A, taking into account that a nearly 10,000 times molar excess of auxiliary proteins is present in lane 8.

Addition of gp45, gp44/62 and gp32 separately or in combination did not substantially modify the replication of undamaged substrate C by the wt or *exo*⁻ polymerases alone (data not shown and Figure 6 of ref 10), although a reduced utilization of the primer was noticed in the presence of gp45 and gp44/62 (see also data in Figures 5 and 6). Auxiliary factors, either separately or together, did not enable replication by wt polymerase past the abasic site in a running start reaction (Figure 5A, lanes 1 to 7 and Figure 6, lanes 6 and 7). Moreover, shorter exposures of the gel indicated that DNA synthesis was always blocked at the base preceding the lesion, even in the presence of the factors (data not shown).

Addition of gp45, gp44/62 and gp32 to the reaction with exonuclease-deficient polymerase gave a different picture. Although a low level of extension past the AP site was detected even when the polymerase alone was used (lane 9 of Figure 5A, quantified in Figure 5B, and lane 2 of Figure 6), a lower exposure of the gel revealed that the vast majority of the products ended at both the base preceding and in front of the lesion, as seen in Figures 3 and 4. Neither the single-stranded DNA binding protein, gp32, alone at a ratio of one molecule of protein per six nucleotides (lane 11 of Figure 5A) nor the clamp loader, gp44/62, alone (lane 4 of Figure 6)

altered the polymerase behavior, as quantified in Figure 5B. However, a slight increase in the polymerase capacity to extend past the lesion was observed upon addition of the processivity clamp, gp45, alone (lanes 10 of Figure 5A and 3 of Figure 6, quantified in 5B and 6 B). This was somewhat unexpected, since clamp loading factor is required to assemble the processivity clamp on circular double-stranded DNA. This result might be explained by the observation that the gp45 has both open and closed subunit interfaces in solution [21]; hence some of the molecules are open trimers and may not need to be charged by gp44/62 to exert their stimulatory action.

Addition of both gp45 and gp44/62 significantly increased capacity of the *exo*⁻ polymerase to extend past the AP site (lanes 12 of Figure 5A, quantified in 5B). Neither the amount nor the distribution of these extended products varied when gp32 was added (lanes 13 of Figure 5A and lane 5 of Figure 6, quantified in 5B). Leaving out ATP from the reaction reduced the amount of the products extended (lane 14 of Figure 5A quantified in 5B). As mentioned before, addition of gp45 and gp44/62 with or without gp32 resulted in a reduced utilization of the primer by the polymerase in the running start reaction (lanes 5, 6, 12 and 13 of Figure 5A and lane 5 of Figure 6) in a fashion that appeared to be at least in part ATP dependent (see lane 14 of Figure 5A).

We also investigated the effect of the auxiliary proteins on the extension past an abasic site by the wt and *exo*⁻ forms of the T4 polymerase in a standing start reaction, where the 3'-OH of the primer is situated just before the lesion. The wt enzyme was unable to incorporate in front of the lesion, with only a faint band revealed by overexposure of the gel (lane 13 of Figure 6). Addition of the accessory protein did not change the intensity of this band or allow any extension (lane 14 of Figure 6). For low concentrations of the *exo*⁻ pol alone, the vast majority of the products ended in front of the AP site with the presence of few extended products of reduced length (lane 9 of Figure 6), similar to what was observed with the running start reaction. However, significant extension of these products was obtained only upon simultaneous addition of gp45, gp44/62 and gp32 (lane 12 of Figure 6, quantified in Figure 6B). The stimulatory effect of the accessory proteins appears to be reduced in the standing start reaction compared to the running start (compare figs 5 to 6); this may be due to an increased difficulty in charging the processivity factor when the 3'-OH of the primer is so closed to the lesion.

Taken together, these results show that addition of both the processivity factor gp45 and of the clamp loader gp44/62 in the presence of ATP favors primer extension by low concentrations of an exonuclease-deficient form of T4 polymerase across an apurinic site placed on a circular DNA template. In contrast, addition of accessory factors does not permit wt DNA polymerase to either incorporate a nucleotide in front of the lesion or to extend the primer beyond it.

DISCUSSION

A number of laboratories, including ours, have reported that the 3'-5' exonuclease-deficient T4 DNA polymerase mutant D219A can extend beyond an abasic lesion when replicating synthetic linear or circular DNA templates and that dAMP is the desoxyribonucleoside monophosphate preferentially incorporated in front of the lesion [11, 22, 23]. Although these observations clearly reflect an intrinsic capacity of the mutant polymerase to replicate past an AP site, they were obtained at relatively high molar ratios of enzyme/DNA template. These experimental conditions may differ from the physiological situation *in vivo*, where the concentration of the polymerase is likely much lower than that of the DNA. In the case of bacteriophage T4, roughly 600 molecules of polymerase are estimated to be engaged in the replication of the 1.7×10^5 base-long phage genome [24]. During replication the polymerase/DNA ratio is probably even lower since a T4 infected cell has been calculated to contain, in addition to the genomic DNA, 60 replication forks or 120 growing chains [25]. This reasoning led us to investigate the capacity of the exonuclease-deficient form of the T4 polymerase to replicate past an abasic site on template DNA at low enzyme/DNA ratios.

Translesion DNA synthesis by *exo*⁻ T4 pol is considered to take place in two steps, insertion of a nucleotide opposite the damaged template base followed by extension from the inserted nucleotide. Data reported in Figures 2 and 3 show that, depending

on the polymerase/DNA ratio, these steps are affected differently by the presence of the AP lesion. At high ratios (from 0.03 to 0.3 pol/DNA) the exo^- polymerase is able to synthesize past the lesion while at low ratios (from 3×10^{-4} to 3×10^{-3} pol/DNA) it inserts a nucleotide in front of the AP site but is unable to extend from the resulting 3'-OH. Taken together, these data indicate that, under experimental conditions likely to be closer to a physiological situation than those employed in previous studies, the exonuclease deficient T4 polymerase can insert one nucleotide in front of an abasic site but cannot further elongate.

No extension is observed after 90 minutes of reaction with low pol/DNA ratios, even though the enzyme continues to catalyze insertion across from the lesion (Figure 4). Significant unreplicated substrate remains in these experiments compared to experiments with higher protein concentrations because the translesion synthesis by low protein concentrations is incomplete (compare Figures 2B, 3B and 4B). The equilibrium binding constant for the formation of the ternary complex of T4 pol with undamaged P/T DNA and non-hydrolysable nucleotide triphosphate has been estimated from analytical ultracentrifugation experiments, $K_d = k_{off}/k_{on} = 5$ nM [26]. The inability of low concentrations of exo^- mutant to extend from the mispaired terminal base pair of the primer may reflect a diminished affinity of the enzyme for the P/T junction after translesion synthesis which can be overcome by sufficiently high protein concentration.

During DNA replication, the T4 DNA polymerase associates with replicative auxiliary factors that increase the enzyme's DNA binding capacity and processivity and could modulate the TLS activity of the enzyme. We have previously reported that addition of auxiliary replicative proteins did not modify the intrinsic bypass capacity of wt or exo^- T4 DNA polymerase to replicate linear or circular DNA substrates containing an abasic site [11]. However, the concentration of exonuclease-deficient polymerase used in those experiments was high enough to catalyze substantial translesion replication on its own, as shown in the present study, and this could have masked effects of the accessory proteins. We therefore decided to investigate the effect of replicative auxiliary factors under conditions where the mutant polymerase is not able to extend past the lesion.

Results in Figures 5 and 6 show that addition of both the processivity clamp factor gp45 and of the clamp loader gp44/62 allows exo^- T4 polymerase to extend primer DNA across an abasic site on a circular template. At variance with our data, a previous study reported that enhancement of wild type or exo^- T4 polymerase processivity did not affect its ability to bypass an abasic site [27]. The origin for these conflicting observations is unclear, but probably reflects the different DNA substrates used. We observed that auxiliary factors enhance extension in these reaction conditions for both running and standing start reactions. Results also indicate that the presence of the single-stranded DNA binding protein gp32 does not enhance or reduce the amount of extended products. We found that the presence of 5 to 10 times molar excess of gp45 and gp44/62 over the DNA template-primer concentration was necessary to obtain a significant extension past the lesion (data not shown). Similar experimental conditions are often reported in the literature [23, 28] and may reflect a relative inefficacy of the *in vitro* loading process. We estimate the amount of elongation past the lesion in these experiments to be roughly 30 % of the total reaction products in the case of the running start reaction. This value could be an underestimation, since for reasons that we do not presently understand, we also observe a reduced utilization of the primer by both wt and exo^- polymerases in the presence of gp45 and gp44/62 in a reaction that requires ATP. Addition of auxiliary factors did not permit either insertion in front of the lesion or extension beyond it by the wt DNA polymerase.

X-ray crystallography studies of RB69 DNA polymerase, a Family B DNA polymerase related to T4 polymerase [28-32], are useful to understand the behavior of T4 DNA pol [29]. The polymerase forms a binary complex with and the P/T junction (B_n) in which the primer strand is located in the exonuclease site of the enzyme (e) [30, 31]. (Figure 7). Addition of the nucleotide substrate rotates the P/T DNA by 40° and induces the formation of a closed complex [28-32] (T_n , designated as an ellipse in Figure 7) in which, the coding base (n) and complementary nucleotide substrate (N) are held tightly in a pocket at the polymerization catalytic site of the ternary complex (p). This closed conformation is maintained without electrostatic or hydrogen bonds between the bases (n and N) and the protein, indicating that the steric constraints of the binding pocket are sufficient for selection of the correct Watson-Crick base pair [31, 32]. Once formed, this closed ternary complex is poised for catalysis and the primer can be extended by one nucleotide. When T4 polymerase encounters an AP lesion on template DNA, "replication" of the AP site produces a mismatched 3' primer terminus whose steric characteristics are no longer those of a Watson-Crick base pair [33, 34]. This terminal mismatch fits

poorly in the catalytic site p and is expected to destabilize binding. P/T DNA returns to the proofreading site where the exonuclease activity will remove the 3' terminal base [31]. As a result, wt T4 DNA pol is invariably arrested at the base preceding an AP lesion in the template strand. In the case of an exonuclease-deficient mutant, the base incorporated across from the AP site is not removed and a fraction of the P/T DNA can return to the polymerization site where chain extension past this lesion could resume, although at a lower rate (Figure 7). Polymerization is in kinetic competition with dissociation of P/T DNA from the complex [36]. In the event that P/T DNA containing mispair is released, a mismatch at the 3' end of the primer may inhibit reassociation of free DNA to the polymerase. This inhibition, coupled with dissociation of the replication complex at low protein concentration, could explain the failure of the *exo*⁻ DNA polymerase to elongate past the lesion (Figure 4).

We report here that the efficiency of chain extension past an AP lesion in a circular DNA substrate at low polymerase/DNA ratio is enhanced by the clamp processivity factor, gp45. The processivity clamp is tethered to the polymerase by the flexible carboxy-terminus of the polymerase. An x-ray structure of the RB69 clamp has been reported and model building of its interactions with RB69 pol shows that the clamp can remain attached to the polymerase as the P/T DNA swings between the polymerization and exonuclease active sites [30, 31]. In addition, Hingorani and O'Donnell have argued that the apparently flexible connection and the rather small area of contact between the polymerase and its processivity factor might allow the polymerase to transiently release its grip from the DNA, while still remains bound to the clamp [35]. If these ideas are correct, the processivity factor promotes extension past an AP lesion in these conditions by maintaining a high enough local concentration of DNA polymerase and DNA to push the equilibrium toward the binary and ternary complexes (Figure 7).

In conclusion, *in vitro* bypass of an AP site can be a "two polymerases affair" in which DNA polymerases δ , η , ι and Rev1, for example, work as "inserters" and DNA polymerase ξ as an "extender" (see Table I of ref 1). However, polymerases also exist, such as pol V or POLQ, that have the ability to efficiently carry out both the insertion and extension reactions [1, 2, 4]. T4 DNA polymerase presents a novel situation in which a single DNA polymerase can behave first as an inserter, and then as an extender with the help of replicative accessory proteins.

Acknowledgments

This work was partially supported by the CNRS and by grant 3477 from the Association pour la Recherche sur le Cancer to G.V. G.B. was supported by a grant from the Fondation pour la Recherche Médicale.

REFERENCES

- 1 Friedberg, E. C., Lehmann, A. R. and Fuchs, R. P. (2005) Trading places: how do DNA polymerases switch during translesion DNA synthesis? *Mol. Cell.* **18**, 499-505.
- 2 Friedberg, E. C., Lehmann, A. R. and Fuchs, R. P. (2005) Suffering in silence: the tolerance of DNA damage *Nat. Rev. Mol. Cell. Biol.* **6**, 943-53.
- 3 Seki, M., Masutani, C., Yang, L. W., Schuffert, A., Iwai, S., Bahar, I. and Wood, R. D. (2004) High-efficiency bypass of DNA damage by human DNA polymerase η *Embo J.* **23**, 4484-94.
- 4 Prakash, S., Johnson, R. E. and Prakash, L. (2005) Eukaryotic translesion synthesis DNA polymerases: specificity of structure and function *Annu. Rev. Biochem.* **74**, 317-53.
- 5 Villani, G., Boiteux, S. and Radman, M. (1978) Mechanism of ultraviolet-induced mutagenesis: extent and fidelity of *in vitro* DNA synthesis on irradiated templates *Proc. Natl. Acad. Sci. U.S.A.* **75**, 3037-41.
- 6 Vandewiele, D., Borden, A., O'Grady, P. I., Woodgate, R. and Lawrence, C. W. (1998) Efficient translesion replication in the absence of *Escherichia coli* Umu proteins and 3'-5' exonuclease proofreading function *Proc. Natl. Acad. Sci. U.S.A.* **95**, 15519-24.

- 7 Fuchs, R. P. and Napolitano, R. L. (1998) Inactivation of DNA proofreading obviates the need for SOS induction in frameshift mutagenesis *Proc. Natl. Acad. Sci. U.S.A.* **95**, 13114-9.
- 8 Borden, A., O'Grady, P. I., Vandewiele, D., Fernandez de Henestrosa, A. R., Lawrence, C. W. and Woodgate, R. (2002) Escherichia coli DNA polymerase III can replicate efficiently past a T-T cis-syn cyclobutane dimer if DNA polymerase V and the 3' to 5' exonuclease proofreading function encoded by dnaQ are inactivated *J. Bacteriol.* **184**, 2674-81.
- 9 Goldsby, R. E., Hays, L. E., Chen, X., Olmsted, E. A., Slayton, W. B., Spangrude, G. J. and Preston, B. D. (2002) High incidence of epithelial cancers in mice deficient for DNA polymerase delta proofreading *Proc. Natl. Acad. Sci. U.S.A.* **99**, 15560-5.
- 10 Sagher, D. and Strauss, B. (1983) Insertion of nucleotides opposite apurinic/apyrimidinic sites in deoxyribonucleic acid during in vitro synthesis: uniqueness of adenine nucleotides *Biochemistry.* **22**, 4518-26
- 11 Tanguy Le Gac, N., Delagoutte, E., Germain, M. and Villani, G. (2004) Inactivation of the 3'-5' exonuclease of the replicative T4 DNA polymerase allows translesion DNA synthesis at an abasic site *J. Mol. Biol.* **336**, 1023-34.
- 12 Morris, C. F., Hama-Inaba, H., Mace, D., Sinha, N. K. and Alberts, B. (1979) Purification of the gene 43, 44, 45, and 62 proteins of the bacteriophage T4 DNA replication apparatus *J. Biol. Chem.* **254**, 6787-96.
- 13 Nossal, N. G., Hinton, D. M., Hobbs, L. J. and Spacciapoli, P. (1995) Purification of bacteriophage T4 DNA replication proteins *Methods Enzymol.* **262**, 560-84.
- 14 Pietroni, P., Young, M. C., Latham, G. J. and von Hippel, P. H. (2001) Dissection of the ATP-driven reaction cycle of the bacteriophage T4 DNA replication processivity clamp loading system *J. Mol. Biol.* **309**, 869-91.
- 15 Reddy, M. K., Weitzel, S. E. and von Hippel, P. H. (1992) Processive proofreading is intrinsic to T4 DNA polymerase *J. Biol. Chem.* **267**, 14157-66.
- 16 Nossal, N. G. (1974) DNA synthesis on a double-stranded DNA template by the T4 bacteriophage DNA polymerase and the T4 gene 32 DNA unwinding protein *J. Biol. Chem.* **249**, 5668-76.
- 17 Young, M. C., Kuhl, S. B. and von Hippel, P. H. (1994) Kinetic theory of ATP-driven translocases on one-dimensional polymer lattices *J. Mol. Biol.* **235**, 1436-46.
- 18 Frey, M. W., Nossal, N. G., Capson, T. L. and Benkovic, S. J. (1993) Construction and characterization of a bacteriophage T4 DNA polymerase deficient in 3'-->5' exonuclease activity *Proc. Natl. Acad. Sci. U.S.A.* **90**, 2579-83
- 19 Tomer, G. and Livneh, Z. (1999) Analysis of unassisted translesion replication by the DNA polymerase III holoenzyme *Biochemistry.* **38**, 5948-58.
- 20 Trakselis, M. A., Mayer, M. U., Ishmael, F. T., Roccasecca, R. M. and Benkovic, S. J. (2001) Dynamic protein interactions in the bacteriophage T4 replisome *Trends Biochem. Sci.* **26**, 566-72.
- 21 Alley, S. C., Shier, V. K., Abel-Santos, E., Sexton, D. J., Soumillion, P. and Benkovic, S. J. (1999) Sliding clamp of the bacteriophage T4 polymerase has open and closed subunit interfaces in solution *Biochemistry.* **38**, 7696-709.
- 22 Berdis, A. J. (2001) Dynamics of translesion DNA synthesis catalyzed by the bacteriophage T4 exonuclease-deficient DNA polymerase *Biochemistry.* **40**, 7180-91.
- 23 Kadyrov, F. A. and Drake, J. W. (2002) Characterization of DNA synthesis catalyzed by bacteriophage T4 replication complexes reconstituted on synthetic circular substrates *Nucleic Acids Res.* **30**, 4387-97.
- 24 Kornberg, A. (1980) DNA Replication, W.H. Freeman and Co editor
- 25 Werner, R. (1968) Distribution of growing points in DNA of bacteriophage T4 *J. Mol. Biol.* **33**, 679-92.
- 26 Delagoutte, E. and Von Hippel, P. H. (2003) Function and assembly of the bacteriophage T4 DNA replication complex: interactions of the T4 polymerase with various model DNA constructs *J. Biol. Chem.* **278**, 25435-47.
- 27 Reineks, E. Z. and Berdis, A. J. (2003) Evaluating the effects of enhanced processivity and metal ions on translesion DNA replication catalyzed by the bacteriophage T4 DNA polymerase *J. Mol. Biol.* **328**, 1027-45
- 28 Yao, N., Turner, J., Kelman, Z., Stukenberg, P. T., Dean, F., Shechter, D., Pan, Z. Q., Hurwitz, J. and O'Donnell, M. (1996) Clamp loading, unloading and intrinsic stability of the PCNA, beta and gp45 sliding clamps of human, E. coli and T4 replicases *Genes Cells.* **1**, 101-13.
- 29 Hogg, M., Cooper, W., Reha-Krantz, L. and Wallace, S. S. (2006) Kinetics of error generation in homologous B-family DNA polymerases *Nucleic Acids Res* **34**, 2528-35

- 30 Shamoo, Y. and Steitz, T. A. (1999) Building a replisome from interacting pieces: sliding clamp complexed to a peptide
from DNA polymerase and a polymerase editing complex *Cell*. **99**, 155-66.
- 31 Franklin, M. C., Wang, J. and Steitz, T. A. (2001) Structure of the replicating complex of a pol alpha family DNA
polymerase *Cell*. **105**, 657-67.
- 32 Reineks, E. Z. and Berdis, A. J. (2004) Evaluating the contribution of base stacking during translesion DNA replication
Biochemistry **43**, 393-404
- 33 Hogg, M., Wallace, S. S. and Double, S. (2004) Crystallographic snapshots of a replicative DNA polymerase encountering
an abasic site *Embo J*. **23**, 1483-93.
- 34 Freisinger, E., Grollman, A. P., Miller, H. and Kisker, C. (2004) Lesion (in)tolerance reveals insights into DNA replication
fidelity *Embo J*. **23**, 1494-505.
- 35 Hingorani, M. M. and O'Donnell, M. (2000) Sliding clamps: a (tail)ored fit *Curr. Biol*. **10**, R25-9
- 36 Greive, S. J. and von Hippel, P. H. (2005) Thinking quantitatively about transcriptional regulation *Nat. Rev. Mol. Cell. Biol.*
6, 221-32.

FIGURES LEGENDS

Figure 1. DNA substrates used in this study. X represents the position of the artificial abasic site (tetrahydrofuran residue). (A) linear 60/17-mer substrate, (B) linear 60/17-mer substrate containing the abasic site, (C) circular 100/17-mer substrate, (D) circular 100/17 mer substrate containing an abasic site for running start experiments, (E) circular 100/18 mer substrate containing an abasic site for standing start experiments.

Figure 2. Replication of linear DNA substrates by gp43 wt and gp43D219A DNA polymerases. (A) Phosphorolmage of the reaction products for undamaged substrate, A, or substrate that contains an AP lesion, B. Reactions were performed as described in materials and methods with 30 nM substrates A or B for 30 minutes at 37°C at the indicated concentrations of polymerases. In the case of lanes 5 to 8 and 9 to 12, concentrations of the enzymes were 0.01 nM, 0.1 nM, 1 nM and 10 nM respectively. The position of the 17-mer (primer) and of the 60-mer (full length product) are indicated on the left side of the gel, while the location of the abasic site is indicated on the right side. (B) Quantification of the data shown in panel A for the damaged substrate.

Figure 3. Replication of circular DNA substrates by gp43 wt and gp43D219A DNA polymerases in a running start reaction. (A) Phosphorolmage of the reaction products. Reactions were performed as described in materials and methods with 15 nM of running start substrates C (undamaged) or D (with an AP lesion) for 30 minutes at 37°C at the indicated concentrations of polymerases. In the case of lanes 6 to 10 and 11 to 15, concentrations of the enzymes were 0.001 nM, 0.01 nM, 0.1 nM, 1 nM and 10 nM respectively. The position of the 17-mer (primer) and of the 100-mer (full length product) are indicated on the left side of the gel, while the location of the abasic site is indicated on the right side. (B) Quantification of the data shown in A for the damaged substrate.

Figure 4. Insertion of a nucleotide in front of the lesion of an AP- containing circular DNA substrate in a running start reaction. (A) Phosphorolmage of the reaction products. Running start reactions were performed as described in materials and methods with 15 nM substrate D at the indicated times and concentrations of polymerases. The position of the 17-mer (primer) is indicated on the left side of the gel while the location of the abasic site is indicated on the right side. (B) Quantification of the data shown in A.

Figure 5. Replication of the AP-containing circular DNA substrate by gp43wt and gp43D219A DNA polymerases, in combination with other replicative proteins, in a running start reaction. (A) Phosphorolmage of the reaction products. Reactions were performed as described in materials and methods with 15 nM running start substrate D, 0.05 nM of either gp43 wt or gp43D219A polymerases, 100 nM of gp45, 200 nM of gp44/62 and 150 nM of gp32. Incubation time was 30 minutes at 37°C. The position of the 17-mer primer is indicated in the left part of the gel while the location of the abasic site and of the full length 100-mer product are indicated on the right side. Lane 14 is the same as lane 13, except that ATP has been omitted from the reaction mixture. (B) Quantification of the extension from the AP site by the D219A polymerase, either alone or in combination with the replicative proteins. Data are the average of three independent experiments \pm S. E.

Figure 6. Replication of the AP-containing circular DNA substrate by gp43wt and gp43D219A DNA polymerases, in combination with other replicative proteins, in both running and standing start reactions. Reactions were performed as described in materials and methods with 15 nM running start or standing start substrate D, 0.05 nM of either gp43 wt or gp43D219A polymerases, 100 nM of gp45, 200 nM of gp44/62 and 150 nM of gp32. Incubation time was 30 minutes at 37°C. The position of the 17-mer primer, the AP site and the 100-mer full length product for the running start reaction are indicated in the left part of the gel, while the location of the 18-mer primer and of the abasic site for the standing start reaction are indicated on the right side. (B) Quantification of the extension from the AP site by the D219A polymerase, either alone or in combination with the replicative proteins. Data are the average of four independent experiments \pm S. E.

Figure 7. Model for DNA replication by T4 pol based on structural data for the homologous DNA polymerase RB69 [28-32].

In this scheme T4DNA polymerase (Pol), which has a polymerase catalytic site (p) and an exonuclease catalytic site (e), binds to an undamaged primer-template DNA with base n at the coding position on the template strand (P/T_n) to form a binary complex (B_n). Pol and B_n are in an open conformation indicated as a sphere and P/T_n is situated in the exonuclease site of the binary complex (see text). Binding of complementary substrate dNTP (N) to B_n induces a closed ternary complex (T_n) depicted as an ellipse. During this conformational change the P/T DNA rotates and moves 40 \AA so that N , n and the $3'$ -OH terminus of the primer strand are at p and the enzyme catalyzes polymerization (k_p). Addition of N to the primer strand is followed by pyrophosphate (pp_i) release and translocation. Subsequent nucleotide addition that leads to elongation likely occurs via a closed polymerase complex, designated [], whose structure has not yet been determined. The polymerase complex attains thermodynamic equilibrium between each nucleotide addition step [36] and consequently can either dissociate or bind the following dNTP and enter the next elongation cycle.

Fig 1

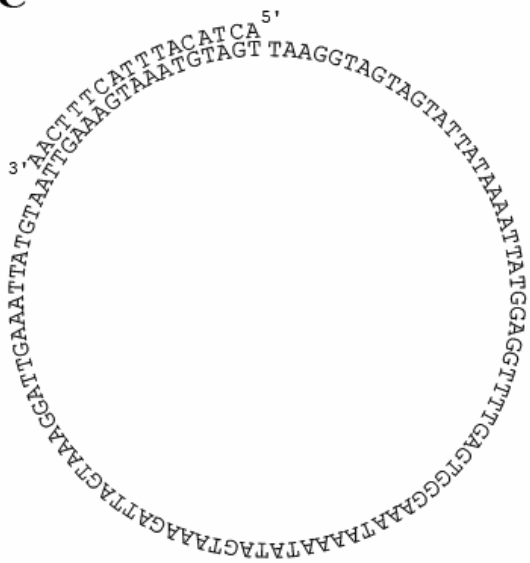
A

3' -GCATACGAGAACCAACAT-5'
 5' -GGTGGTGGTGGGCGCCGGCGGTGTGAATTCGGCACTGGCCGTCGTATGCTCTTGGTTGTA-3'

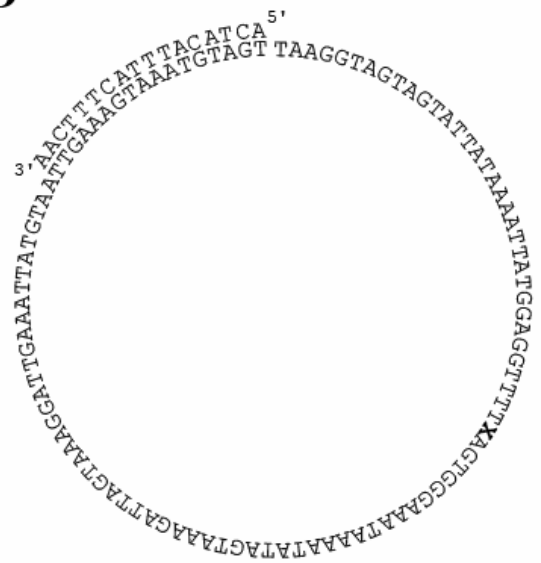
B

3' -GCATACGAGAACCAACAT-5'
 5' -GGTGGTGGTGGGCGCCGGCG**X**TGTGAATTCGGCACTGGCCGTCGTATGCTCTTGGTTGTA-3'

C



D



E

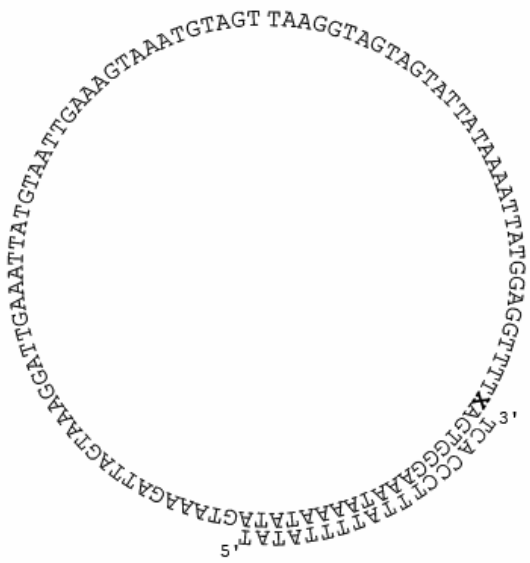
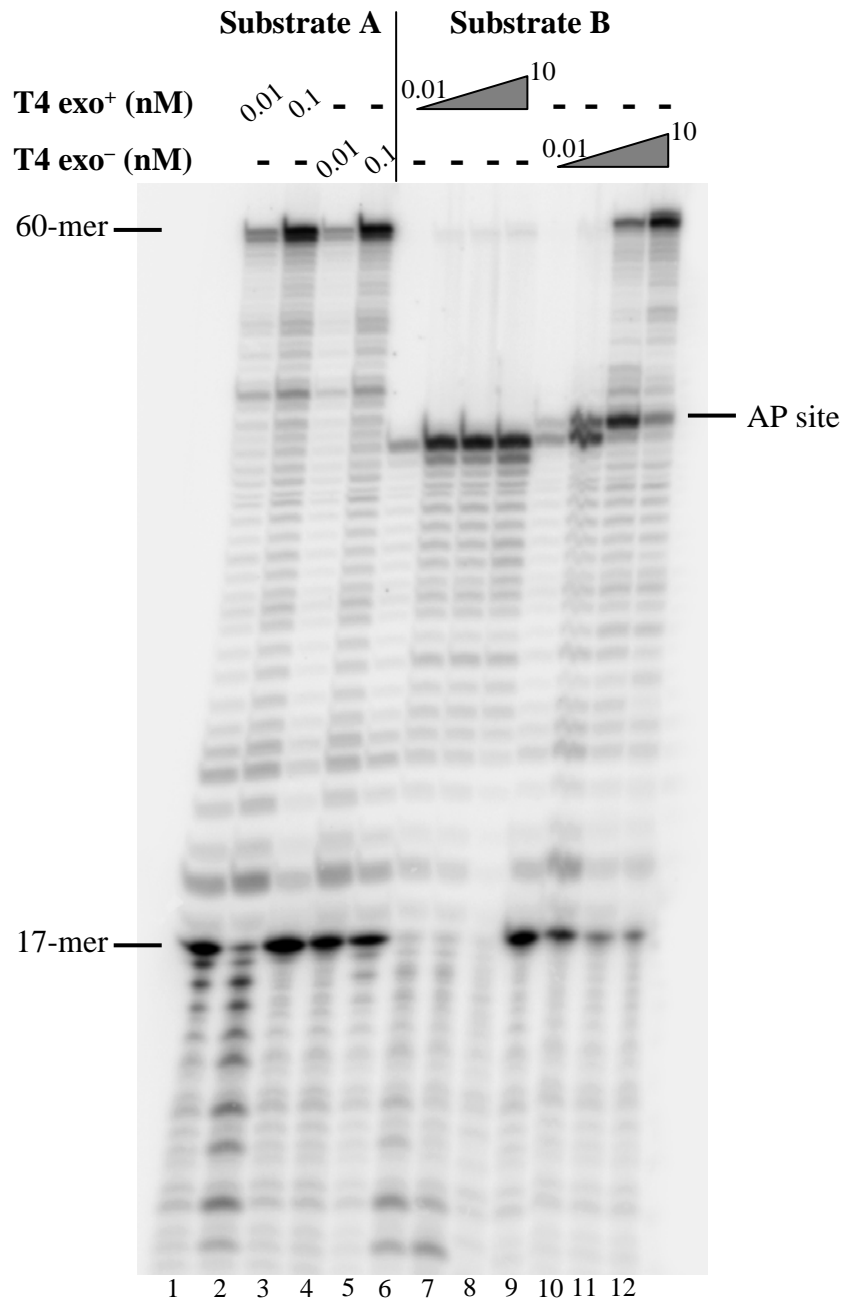


Fig 2

A



B

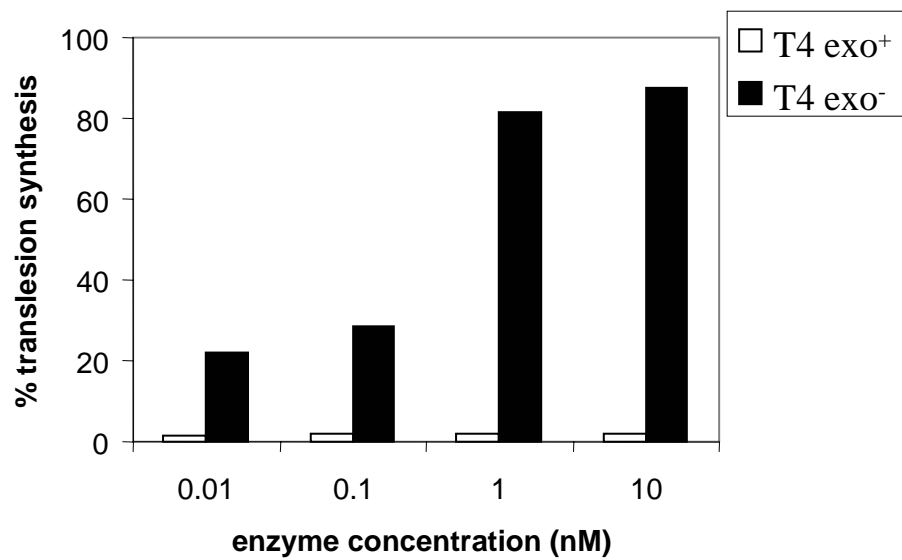
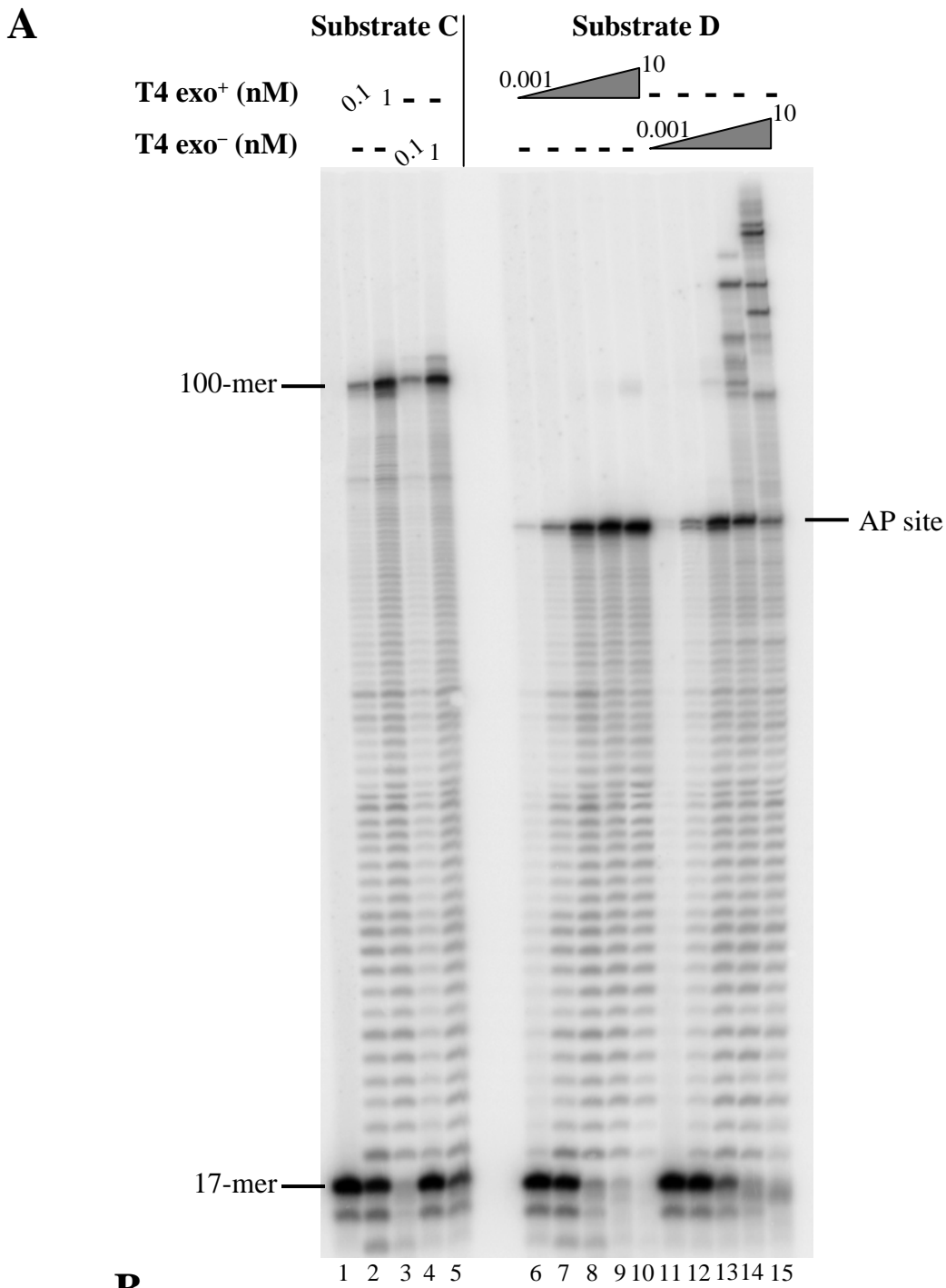


Fig 3



B

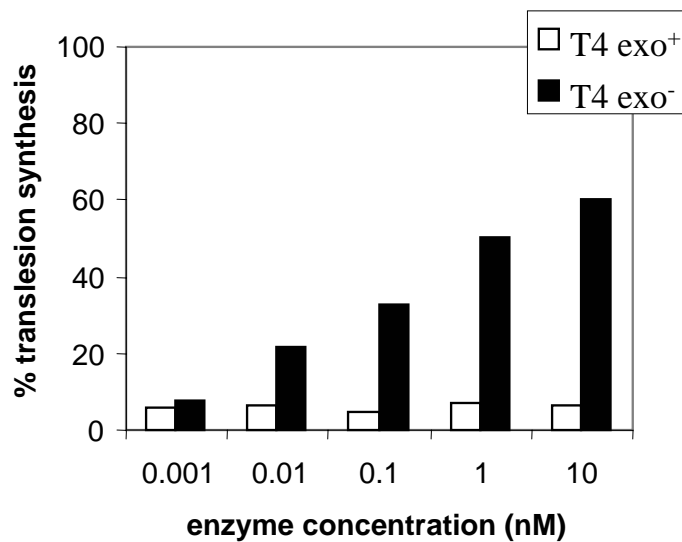
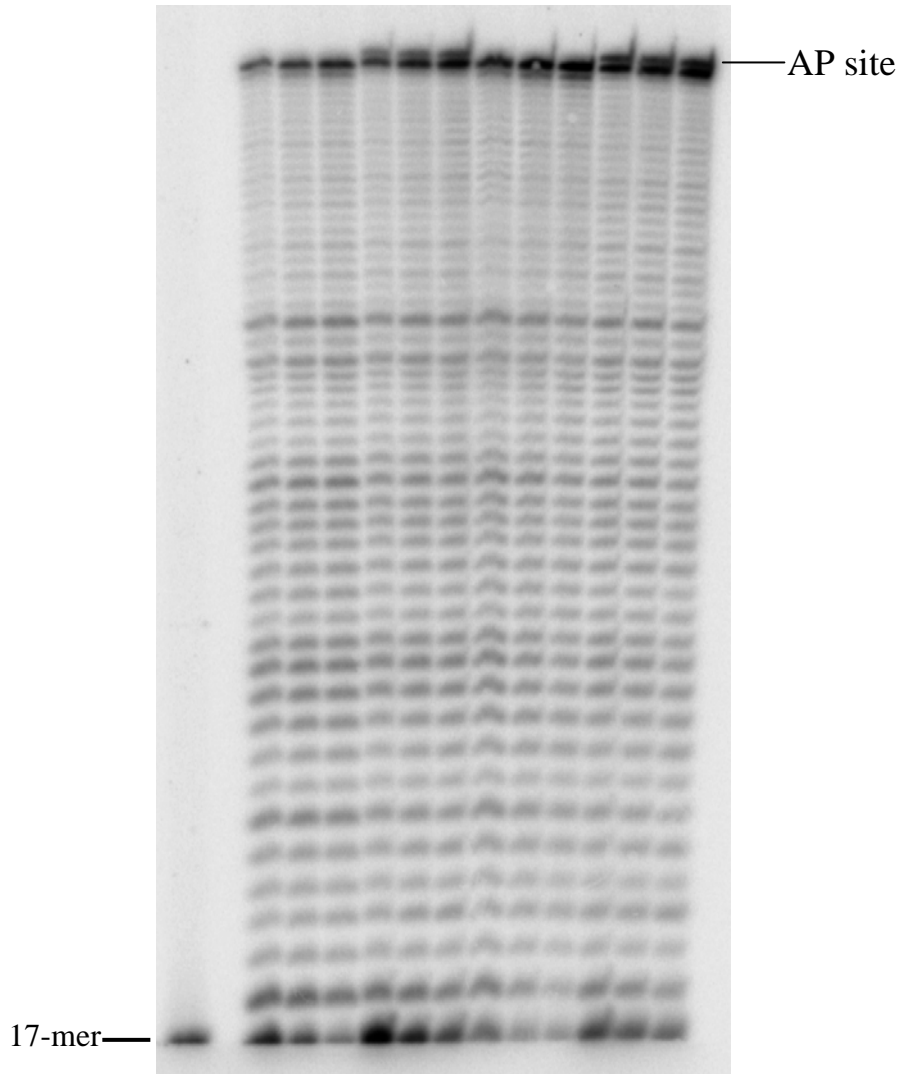


Fig 4

A **Substrate D**

T4 exo^+ (pM)	1	1	1	-	-	-	50	50	50	-	-	-
T4 exo^- (pM)	-	-	-	1	1	1	-	-	-	50	50	50
Time (min)	30	60	90	30	60	90	30	60	90	30	60	90



B

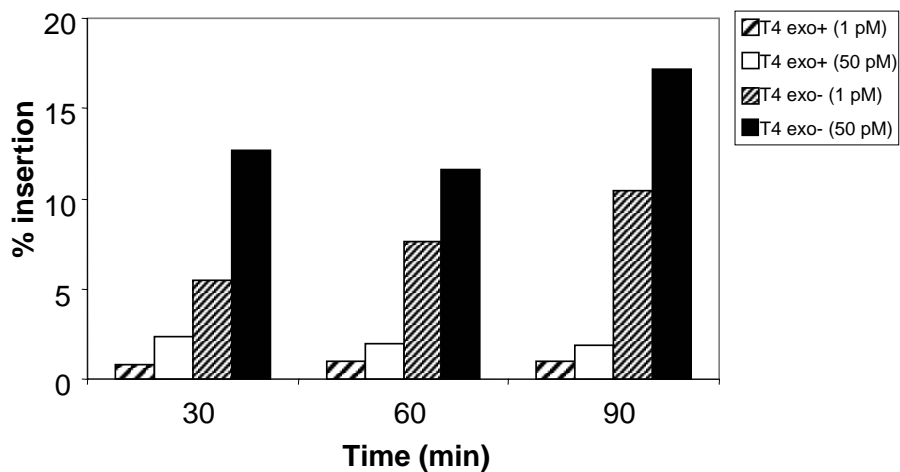


Fig 5

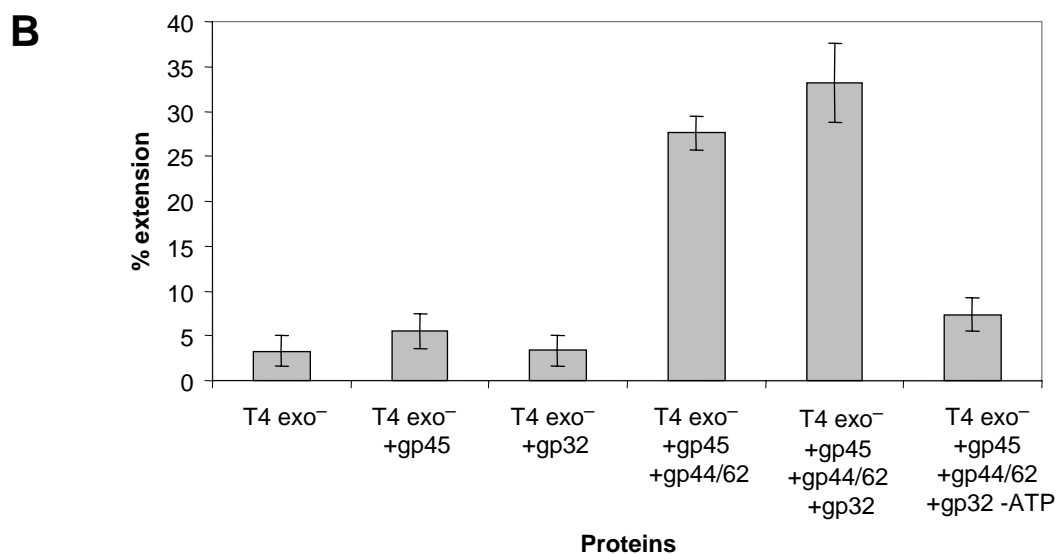
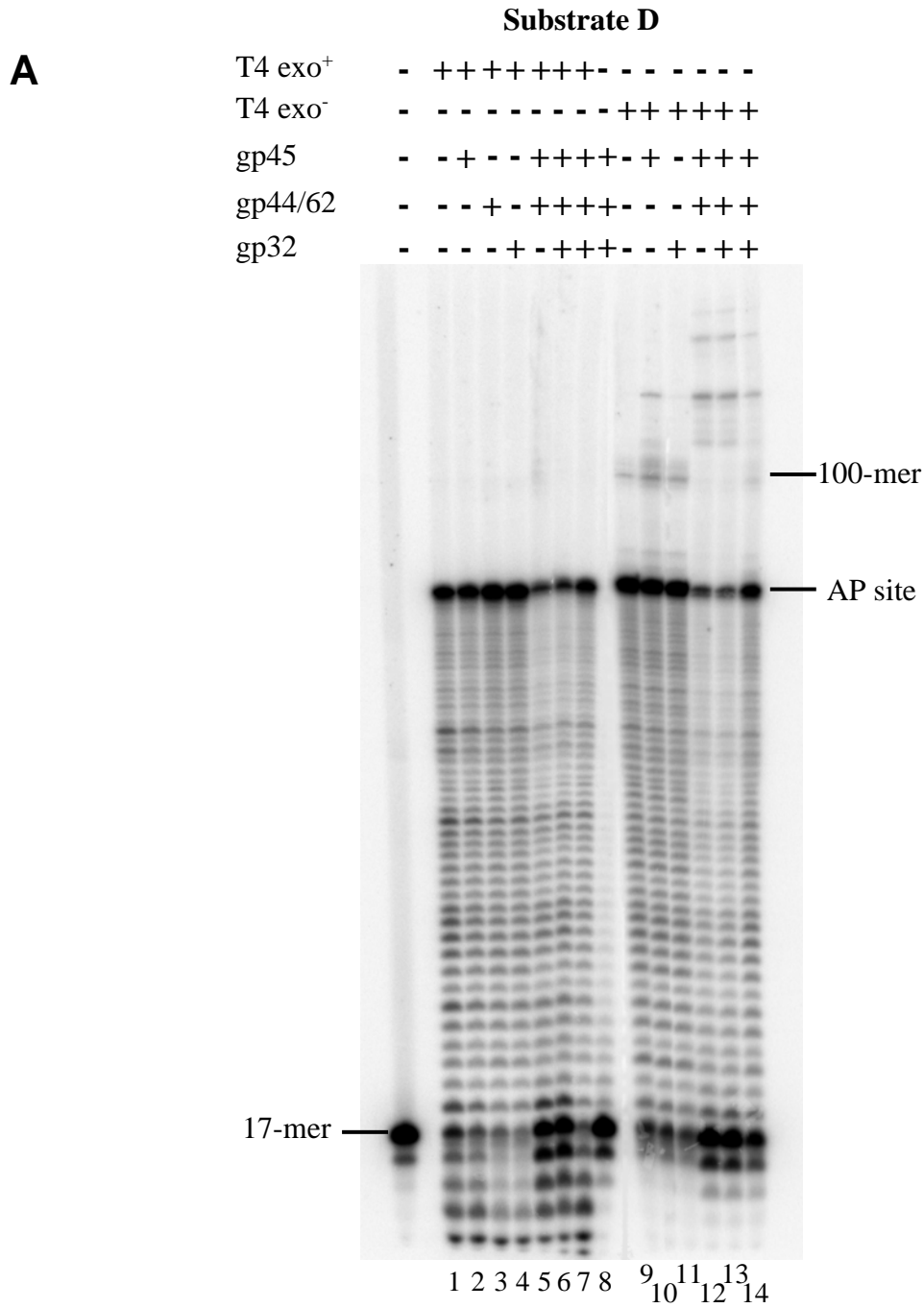


Fig 6

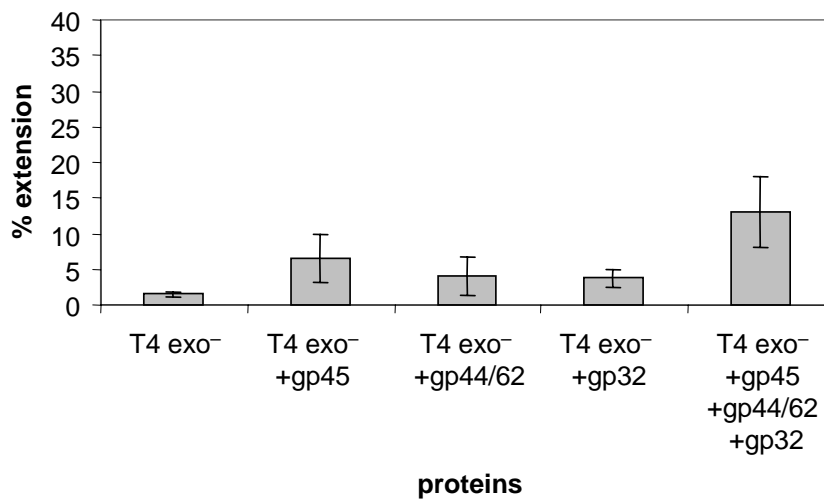
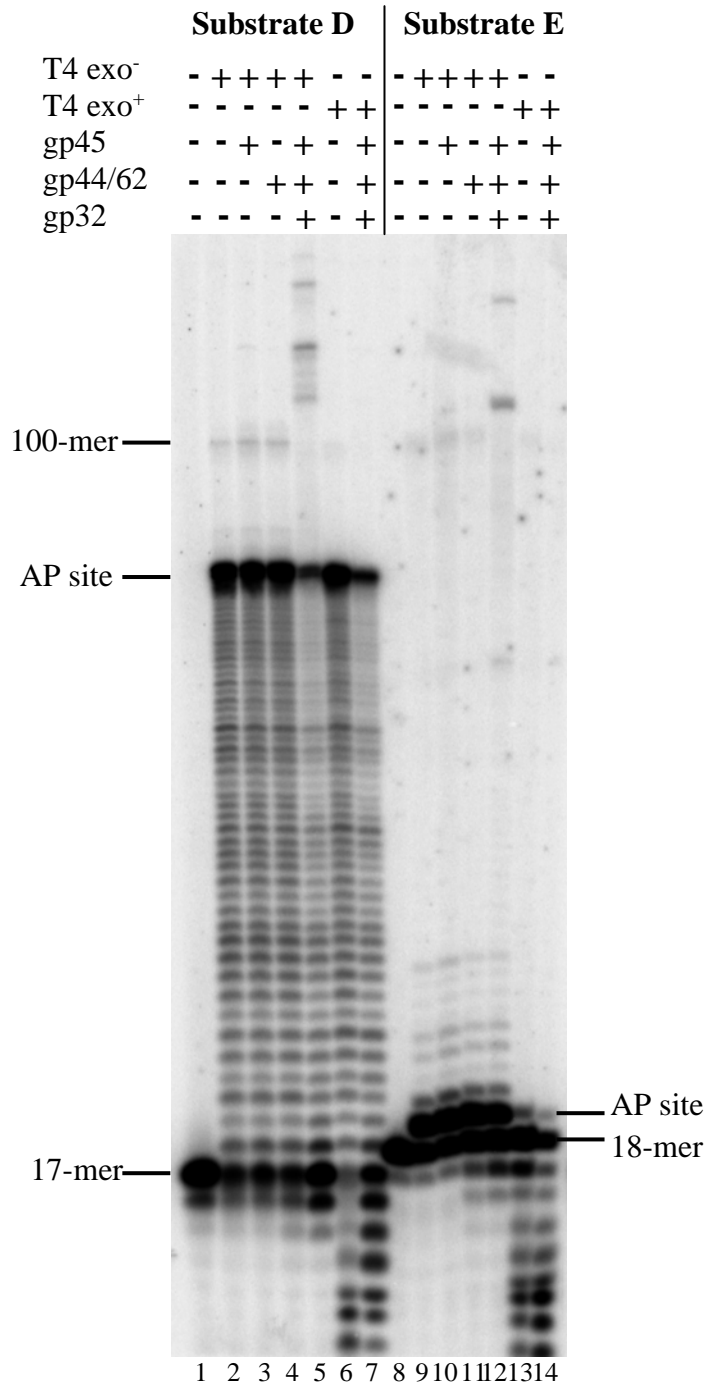


Fig 7

