



HAL
open science

The translation initiation factor eIF2beta is an interactor of protein phosphatase-1

Paulina Wakula, Monique Beullens, Aleyde van Eynde, Hugo Ceulemans, Willy Stalmans, Mathieu Bollen

► **To cite this version:**

Paulina Wakula, Monique Beullens, Aleyde van Eynde, Hugo Ceulemans, Willy Stalmans, et al.. The translation initiation factor eIF2beta is an interactor of protein phosphatase-1. *Biochemical Journal*, 2006, 400 (2), pp.377-383. 10.1042/BJ20060758 . hal-00478601

HAL Id: hal-00478601

<https://hal.science/hal-00478601>

Submitted on 30 Apr 2010

HAL is a multi-disciplinary open access archive for the deposit and dissemination of scientific research documents, whether they are published or not. The documents may come from teaching and research institutions in France or abroad, or from public or private research centers.

L'archive ouverte pluridisciplinaire **HAL**, est destinée au dépôt et à la diffusion de documents scientifiques de niveau recherche, publiés ou non, émanant des établissements d'enseignement et de recherche français ou étrangers, des laboratoires publics ou privés.

The translation initiation factor eIF2 β is an interactor of protein phosphatase-1

Paulina Wakula, Monique Beullens, Aleyde Van Eynde, Hugo Ceulemans, Willy Stalmans and Mathieu Bollen

Division of Biochemistry, Department of Molecular Cell Biology, Faculty of Medicine, KULeuven, B3000 Leuven, Belgium

Running title: eIF2 β interacts with PP1

Key words: protein (de)phosphorylation; eIF2 β ; protein phosphatase-1; translation

Corresponding author: M. Beullens,
Afdeling Biochemie
Campus Gasthuisberg
Herestraat 49, B-3000 Leuven,
Belgium
Phone: +32-16-34 57 01
Fax: +32-16-34 59 95
E-mail: Monique.Beullens@med.kuleuven.be

ABSTRACT

It is reasonably well understood how the initiation of translation is controlled by reversible phosphorylation of the translation initiation factors eIF2 α , eIF2B ϵ and eIF4E. Other initiation factors, including eIF2 β , are also established phosphoproteins but the physiological impact of their phosphorylation is not known. Using a sequence homology search we found that the central region of the eukaryotic translation initiation factor eIF2 β contains a putative PP1-binding RVxF motif. The predicted eIF2 β -PP1 interaction was confirmed by PP1 binding and co-immunoprecipitation assays on cell lysates as well as with the purified components. Site-directed mutagenesis showed that eIF2 β contains, in addition to an RVxF-motif, at least one other PP1-binding site in its C-terminal half. eIF2 β functioned as an inhibitor for the dephosphorylation of glycogen phosphorylase and eIF2 α (Ser51) by PP1, but did not affect the dephosphorylation of eIF2B ϵ (Ser464) by this phosphatase. Strikingly, eIF2 β emerged as an activator of its own dephosphorylation (Ser2, Ser67, Ser218) by associated PP1, since the substrate quality of eIF2 β was decreased by the mere mutation of its RVxF-motif. These data make eIF2 β an attractive *in vivo* candidate substrate for associated PP1. The overexpression of wild-type eIF2 β or eIF2 β with a mutated RVxF-motif did not differentially affect the rate of translation, indicating that the binding of PP1 is not rate-limiting for translation under basal circumstances.

INTRODUCTION

The pre-initiation complex of translation contains eIF1, GTP-bound eukaryotic-initiation-factor (eIF) 2, Met-tRNA^{Met} and the 40S ribosomal subunit, and is converted to the 43S preinitiation complex by association with mRNA and eIF5. A conformational change in this 43S preinitiation complex activates the hydrolysis of GTP. Subsequently, the recognition of the AUG start codon triggers the release of the resulting inorganic phosphate from eIF2 and the dissociation of eIF1 from the complex. Next, the release of eIF2-GDP from the complex enables the recruitment of the 60S ribosomal subunit [1, 2]. The recycling of the eIF2-GTPase complex for a next round of translation depends on the eIF2B-mediated exchange of eIF2-associated GDP by GTP. eIF2 consists of α , β and γ subunits [3]. eIF2 γ with its

intrinsic GTPase activity functions as the catalytic subunit and interacts with both GTP and Met-tRNA^{Met}. eIF2 α is a regulatory subunit and its phosphorylation on Ser51 by one of at least four stress-induced protein kinases turns it into an inhibitor of the GTP exchange factor eIF2B and thus initiation of translation [4]. Finally, eIF2 β interacts with mRNA, eIF1, eIF5 and eIF2B ϵ [5]. The recruitment of eIF1 prevents premature GTP hydrolysis by eIF2 [6]. The interaction between eIF2 β and eIF2 γ is required for the correct usage of the AUG start codon [7]. eIF2B ϵ is the catalytic subunit of the GTP exchange factor eIF2B and its recruitment by eIF2 β requires phosphorylation by protein kinase CK2 [8]. Phosphorylation of eIF2B ϵ by protein kinase CK1 enhances its catalytic activity while phosphorylation by DYRK and the insulin-regulated protein kinase GSK3 has an inhibitory effect on the catalytic activity of eIF2B ϵ [7]. eIF5 acts as a GTPase-activating protein for the catalytic centre of eIF2 γ [9, 10] and is known to be phosphorylated by protein kinase CK2. However, the role of this phosphorylation is unknown. eIF2 β is also a phosphoprotein in vivo. Phosphorylation of eIF2 β by protein kinase A increases the guanine-nucleotide exchange activity of associated eIF2B [11]. eIF2 β is also phosphorylated by the DNA-dependent protein kinase as well as by protein kinases C and CK2, but the significance of phosphorylation by these kinases is not understood [12, 13].

Protein phosphatase-1 (PP1) is a major protein Ser/Thr phosphatase that regulates numerous cellular processes by its ability to dephosphorylate key regulatory proteins. The catalytic subunit of PP1 is present in all eukaryotic cells and forms dozens of different PP1 holoenzymes by association with a host of regulatory polypeptides. These protein interactors function as targeting subunits, substrate-specifiers, inhibitors and/or substrates for associated PP1 [14]. The large majority of PP1 interactors contain a degenerate, so-called RVxF-motif that actually conforms to the consensus sequence [RK]-x₀₋₁-[VI]-{P}-[FW], where x denotes any residue and {P} any residue except Pro [15, 16]. This motif binds with high affinity to a hydrophobic channel that is remote from the catalytic site of PP1. The binding of the RVxF-motif per se has no major effects on the conformation or activity of PP1 [17]. However, the RVxF-mediated anchoring of PP1 promotes the occupation of secondary, lower-affinity binding sites and this often does affect the activity and/or substrate specificity of PP1 [15].

Various approaches have been used to identify novel protein interactors of PP1. Initially, interactors of PP1 were mainly identified by the purification and characterisation of newly purified PP1 holoenzymes. Later, the identification of new PP1 interactors was mainly driven by yeast two-hybrid screens. Other PP1 interacting proteins were identified by affinity chromatography on an affinity matrix of microcystin, a cyclic heptapeptide that potently inhibits PP1 [14]. More recently, mass spectrometry and tools of bioinformatics have been used to extend our knowledge of the PP1 interactome [18, 19]. Using a combination of sequence alignment and biochemical data we show here that the eukaryotic initiation factor eIF2 β is a direct interactor of PP1 *in vitro* and *in vivo*. We also report that eIF2 β has at least two PP1-interaction sites and functions as a substrate-specifier of PP1.

EXPERIMENTAL

Reagents

The catalytic subunit of PP1 and glycogen phosphorylase *b* were purified from rabbit skeletal muscle [20, 21]. Protein kinase CK2 was isolated from pig spleen [22]. The catalytic subunit of beef protein kinase A and recombinant rat DYRK1A were obtained from Sigma-Aldrich and Upstate, respectively. A synthetic peptide comprising the C-terminus of eIF2 β (C³²¹VTGKRAQLRAKA³³²) and coupled to keyhole limpet hemocyanin, was used to generate a rabbit polyclonal antibody. The anti-eIF2 β antibodies were affinity-purified on the peptide coupled to bovine serum albumin and linked to CNBr-activated Sepharose 4B (GE Healthcare). Monoclonal anti-PP1 antibodies were purified on protein-A Sepharose CL-4B (GE Healthcare). The hybridoma clone producing these antibodies was a gift from Dr. J. Vandenhede (University of Leuven). Monoclonal anti-FLAG antibodies were obtained from Stratagene. Polyclonal anti-EGFP antibodies were obtained from Santa Cruz. Polyclonal antibodies specific for eIF2 α phosphorylated at Ser51 were delivered by Biosource International. Swine anti-rabbit and rabbit anti-mouse antibodies were purchased from DakoCytomation.

Plasmids

The sequence encoding rabbit PP1 α was introduced between the *XhoI* and *BamHI* sites of pEGFP-C1 (Clontech), yielding an expression vector for EGFP-PP1 α . The

sequence encoding human eIF2 β was subcloned in the *XhoI*-*BamHI* sites of pEGFP-C1 and the EGFP sequence in this vector was replaced by an adaptor of 1 x FLAG-sequence, generating an expression vector for FLAG-eIF2 β . The human cDNAs encoding eIF2 β -(1-333), eIF2 β -(1-333)-V131A/F133A, eIF2 β -(1-247)-V131A/F133A, eIF2 β -(1-215)-V131A/F133A, eIF2 β -(1-145)-V131A/F133A and eIF2 β -(187-314) were subcloned into the pET16b vector in frame with the polyhistidine encoding sequence, using the *NdeI*-*XhoI* restriction sites. The pET15b plasmid encoding polyhistidine-tagged rabbit GSK3 and the pET8c-CK1 δ plasmid encoding polyhistidine-tagged protein kinase CK1, were gifts from Dr. P. Roach (Indiana University). Vectors encoding eIF2 α (pGEX-2T-eIF2 α), eIF5 (pGEX-KG-eIF5) and eIF2B ϵ (pGEX-HA-1-eIF2B ϵ) were gifts from Drs. T. Matsui (Kanazawa Medical University), U. Maitra (Albert Einstein College of Medicine) and C. Proud (University of Dundee). Mutations were introduced by the QuickChange site-directed mutagenesis method (Stratagene) with the appropriate primers and templates. The sequence of all DNA constructs was verified.

Preparation of recombinant proteins

The polyhistidine-tagged polypeptides and GST-fusions were produced in *Escherichia coli* BL21(DE3)pLysS cells by transformation with the pET plasmid and the pGEX plasmid, respectively. The His-tagged proteins were purified on Ni²⁺-Sepharose™6 Fast Flow (GE Healthcare). The GST-fusion proteins were purified on glutathione-agarose (Sigma-Aldrich).

Pull-down experiments with Ni²⁺-Sepharose

Equimolar amounts of BSA, polyhistidine-tagged eIF2 β wt and eIF2 β mutants were pre-incubated for 1.5 hour at 10°C with Ni²⁺-Sepharose™6 Fast Flow (GE Healthcare) that had been pre-blocked with TBS plus BSA (1 mg/ml) and 0.1% Nonidet P-40. After washing of the beads, the suspension was incubated for 45 minutes at 10°C with 0.2 pmol PP1. Subsequently, the beads were sedimented (1 min at 1000 x g), washed 3 times, first with TBS buffer plus 0.25 M LiCl, then with TBS buffer that was supplemented with 0.1% Nonidet P-40, and finally with 50 mM imidazole at pH 7.4, 0.5 mM dithiothreitol and 5 mM β -mercaptoethanol. The

washed beads were used for the assay of trypsin-revealed phosphorylase phosphatase activity.

Cell culture

HEK293T cells (human embryonic kidney cells) were grown in Dulbecco's modified Eagle's medium (DMEM) with 10% fetal calf serum on 10-cm plates or in sterile 6-well plates (Greiner). One day after seeding, the cells were transfected with plasmid DNA, using the FuGeneTM6 Transfection reagent (Roche), according to the protocol of the manufacturer, or using polyethylenimine (PEI) obtained from Sigma-Aldrich. Cell transfection experiments with PEI were performed in DMEM with 5% fetal calf serum. One day after transfection, the medium was replaced with fresh DMEM supplemented with 10% fetal calf serum.

Cells were blocked in mitosis by the addition of 500 ng/ml Nocodazole (Sigma-Aldrich) for 17 hours. Cells were blocked in the G1/G2-phases by addition of 1 μ M Trichostatin A (BioMol) for 17 hours. To induce ER stress, cells were incubated for 1 hour with 100 μ M thapsigargin (Alexis Biochemicals). UV-C irradiation at 254 nm of cells was carried out using a UV Stratalinker 1800 (Stratagene).

48 hours after transfection, the cells were lysed in PBS buffer, supplemented with 0.5 mM phenylmethanesulfonyl fluoride, 0.5 mM benzamidine, and 5 μ M leupeptin. Cell lysates were sonicated (3 x 30 seconds) and centrifuged at 20,000 x *g* for 10 min. The supernatants were used for immunoprecipitation experiments. Within the same experiment, the total protein concentration in the various conditions was equalized.

Immunological procedures

For immunoprecipitation, cell lysates were incubated with antibodies against eIF2 β , EGFP or the FLAG-peptide for 3 hours at 4°C. Subsequently, protein-A-TSK-Sepharose[®] (Affiland) was added, and the mixture was rotated during 30 min at 4°C. Following centrifugation (1 min at 1000 x *g*), the pellet was washed twice with TBS buffer supplemented with 0.1% Nonidet P-40, and once with 50 mM imidazole at pH 7.4, 0.5 mM dithiothreitol and 5 mM β -mercaptoethanol. The pellets were either boiled in SDS-sample buffer for immunoblotting or assayed for trypsin-revealed

phosphorylase phosphatase activity. For immunoblotting, the retained antibodies were visualized by enhanced chemiluminescence (Western Lightning, Perkin Elmer).

For overlay assays, proteins were directly spotted on a Polyvinylidene difluoride (PVDF) membrane, and the membrane was blocked in 20 mM Tris-HCl at pH 7.5, 0.5 M NaCl, 3% milk powder for 3 hours at 4°C. Subsequently, the blots were incubated overnight in TBS buffer with 1 mg/ml BSA and digoxigenin-labelled PP1. After extensive washes with TBS, the retained PP1 was detected with anti-digoxigenin antibodies (Roche Diagnostics), according to the manufacturer's protocol. For far-western overlays, the blocked blots were incubated in TBS with 1 mg/ml BSA and PP1 for 5 hours at room temperature. After washing twice with TBS buffer and once with TBS buffer with 5% milk powder and 0.2% Triton X-100, PP1 was visualized by immunoblotting.

Assays

Protein phosphatase activities were assayed at 30°C with phosphorylase *a* as a substrate, by the measurement of released acid-stable radioactivity [23]. To measure the total protein phosphatase activity of PP1 that co-sedimented with eIF2 β , the samples were pretreated with trypsin (0.1 mg/ml) for 5 minutes at 30°C to release the free, fully active catalytic subunit. Subsequently, trypsin inhibitor (1mg/ml) was added and the phosphorylase phosphatase activity was measured. Other, recombinant substrates of PP1 were phosphorylated by incubation for 30-60 minutes at 30°C in 20 mM Tris-HCl at pH 7.5 plus 0.1 mM ATP (with or without 0.1 μ Ci/ μ l [γ -³²P]ATP), 2mM magnesium acetate and the indicated protein kinase. Phosphorylation reactions were terminated by the addition of 6.6 mM EDTA. Subsequently, the mixtures were incubated with PP1 with or without eIF2 β . At the indicated times aliquots were boiled in SDS-sample buffer and the extent of phosphorylation was visualized by autoradiography after SDS-PAGE or by immunoblotting with eIF2 α phosphoserine51-specific antibodies.

Protein synthesis measurements

Equal numbers of HEK293T cells were split into 6-well dishes and then transfected with plasmids encoding Flag-eIF2 β or Flag-eIF2 β -V131A/F133A. After 48 hours, the cells were labelled for 2 hours at 37°C with 50 μ Ci of [³⁵S]methionine (GE Healthcare)/ml in methionine-free medium (Invitrogen), supplemented with 10% fetal bovine serum. Cells were washed three times in PBS, and disrupted with lysis buffer. After sonication, the lysates were centrifuged (10,000 x g, 10 min). An aliquot of 5 μ l of the supernatants was diluted in 2 ml scintillation liquid Lumasafe Plus (Lumac LSC) and analyzed by scintillation counting to determine the incorporation of [³⁵S]methionine per mg of proteins.

RESULTS

Identification of eIF2 β as a novel interactor of PP1

The sequence-profile alignment method MaxHom (<http://www.cbi.pku.edu.cn/mirror/predictprotein/>) [24] suggested structural similarities between the established PP1 interactor NIPP1 (nuclear inhibitor of protein phosphatase-1) and the translation initiation factor eIF2 β (Fig. 1A). The similarities included residues 129-133 of eIF2 β , KNV β KF, which forms an instance of the consensus PP1-binding 'RVxF'-motif, i.e. [RK]-x₀₋₁-[VI]-{P}-[FW], as defined by Wakula et al. [16]. Moreover, as in NIPP1 and various other established PP1-interactors [16], the RVxF-instance of eIF2 β is flanked N-terminally by a stretch of basic residues and C-terminally by an acidic stretch. This instance is conserved in eIF2 β from mammals, birds, amphibia and some fish, but not in non-chordate eIF2 β (Fig. 1B). Clearly, the acquisition of the RVxF-instance postdates the primary function of eIF2 β in translation, which qualifies the protein as a 'secondary' interactor of PP1, i.e. a polypeptide that acquired its PP1-binding site later in evolution [18].

To experimentally explore the predicted interaction between PP1 and eIF2 β , we generated bacterially expressed His-eIF2 β , affinity-purified on Ni²⁺-Sepharose. His-eIF2 β bound to digoxigenin-labelled PP1 in overlay assays (Fig. 2A). NIPP1 served as a positive control in this experiment while NIPP1-(1-329)RATA and BSA were used as negative controls. His-eIF2 β also inhibited PP1 with an IC₅₀ of around

50 nM, using glycogen phosphorylase *a* as substrate (Fig. 2B). In contrast, eIF2 β did not affect the phosphorylase phosphatase activity of the structurally related protein phosphatase-2A, indicating that it is a specific inhibitor of PP1. Importantly, the activity of eIF2 β -inhibited PP1 could be fully recovered by the destruction of eIF2 β with trypsin (not shown). Thus, unlike the PP1 interactor Inhibitor-2, eIF2 β does not convert PP1 into an inactive, trypsin-sensitive conformation (25).

Subsequently, we have examined the association between eIF2 β and PP1 in cell lysates. For this purpose, we performed immunoprecipitations with anti-FLAG or anti-EGFP antibodies, following the expression of FLAG-eIF2 β and EGFP-PP1 α in HEK293T cells. These experiments revealed a reciprocal co-immunoprecipitation of FLAG-eIF2 β and EGFP-PP1 α (Fig. 3A). In addition, we found that the immunoprecipitation of endogenous eIF2 β resulted in the co-precipitation of endogenous PP1, as revealed by immunoblotting (Fig. 3B) and phosphorylase phosphatase assays (Fig. 3C). The latter activity was completely inhibited by the addition of NIPP1, showing that it was derived from PP1.

We have also explored whether the eIF2 β -PP1 interaction is affected by treatments that are known to influence the rate of translation by affecting the phosphorylation of eIF2 α , such as the addition of thapsigargin, a treatment with UV-C irradiation, or the synchronization of cells in the G₀-phase (serum starvation), M-phase (nocodazole treatment) or G1/G2-phases (addition of trichostatin A). However, none of these treatments measurably affected the association between eIF2 β and PP1, but we could confirm that these treatments indeed affected the phosphorylation level of eIF2 α (not illustrated).

Mapping of the eIF2 β -PP1 interaction sites

To examine whether residues 129-133 of eIF2 β , KNVKF, constitute a functional RVxF-instance, we mutated Val131 and Phe133 into an alanine. The resulting peptide His-eIF2 β -V131A/F133A, further referred to as eIF2 β -KNAKA, bound to Ni²⁺-Sepharose, was used as an affinity matrix for the binding of purified PP1. Compared to the wild-type protein, eIF2 β -KNAKA displayed a severely decreased ability to bind (Fig. 4A) and inhibit PP1 (Fig. 4B). The importance of the RVxF-instance for the inhibition of PP1 was further examined by using a synthetic RVxF-

containing decapeptide, namely NIPP1-(197-206), as a competitor for the binding to the RVxF-binding site on PP1. The addition of 50 μ M of NIPP1-(197-206), but not the corresponding RATA-peptide, abrogated the inhibition of PP1 by eIF2 β (Fig. 4C), indicating that the RVxF-instance of eIF2 β is indeed required for its ability to inhibit the phosphorylase phosphatase activity of PP1.

Although eIF2 β -KNAKA was clearly deficient in the inhibition of PP1 (Fig. 4B), it could still retain about 25% of the amount of PP1 that interacted with wild-type eIF2 β (Fig. 4A). Consistent with the presence of a second PP1-interaction site, we found that (1) RVxF-containing peptides could only partially disrupt the binding between PP1 and eIF2 β wt, (2) PP1 still bound to the eIF2 β -KNAKA in overlay assays, and (3) eIF2 β -KNAKA, when expressed in HEK293T cells, also co-immunoprecipitated with EGFP-PP1 from cell lysates in a reciprocal manner (not illustrated). To gain more insight into the region of eIF2 β that harbours a second PP1 binding site, we generated C-terminal deletions of eIF2 β -KNAKA and examined the ability of these eIF2 β fragments to bind PP1 (Fig. 5). Carboxyterminal truncation mutants of eIF2 β -KNAKA clearly bound less PP1 and eIF2 β -(1-145)-KNAKA barely retained any PP1 (Fig. 5) and did not bind to PP1 in overlay assays (Fig. 2A), pointing to the existence of a second, C-terminal binding site for PP1. Consistent with this view, we found that eIF2 β -(187-341) bound about as much PP1 as did eIF2 β -KNAKA (Fig. 5). Thus, binding of eIF2 β to PP1 is mediated by the RVxF-motif and at least one additional binding site in the C-terminal half of eIF2 β .

Functional analysis of the eIF2 β -PP1 interaction

Mammalian eIF2 β interacts with eIF5, eIF2B and eIF2 γ , and the latter binds in turn to eIF2 α . Since the initiation factors eIF2 α , eIF2B ϵ and eIF5 are established phosphoproteins, we examined whether these phosphoproteins are substrates for PP1 in the absence or presence of eIF2 β . Ser51 of eIF2 α , phosphorylated in vitro with protein kinase MELK [26] was readily dephosphorylated by PP1. The addition of eIF2 β wt, but not of eIF2 β -KNAKA, inhibited the activity of PP1 towards eIF2 α (Fig. 6A). Thus, eIF2 β is an inhibitor of the dephosphorylation by PP1 of both glycogen phosphorylase *a* (Fig. 2B) and eIF2 α (Fig. 6A). eIF2B ϵ is phosphorylated by protein kinases CK2 (Ser712, Ser713), DYRK1 (Ser539) and CK1 (Ser464).

However, only CK1-phosphorylated eIF2B ϵ was dephosphorylated by purified PP1 (Fig. 6B and not shown) and, surprisingly, this dephosphorylation was only very mildly affected by the addition of eIF2 β or eIF2 β -KNAKA (Fig. 6B). eIF5 phosphorylated by protein kinase CK2 (Ser387, Ser388) was not dephosphorylated by PP1, whether or not eIF2 β was added (not shown). Finally, we have examined whether eIF2 β , phosphorylated by protein kinase CK2 (Ser2, Ser67) or protein kinase A (Ser218) [13], is itself a substrate for associated PP1. The phosphorylation of eIF2 β by either kinase was reversed by PP1 but, surprisingly, the dephosphorylation of eIF2 β -KNAKA was clearly less efficient (Fig. 6C). These results imply that the binding of PP1 to the RVxF-instance promotes the dephosphorylation of eIF2 β by associated PP1.

Since the in-vivo function of the phosphorylation of eIF2 β by protein kinases A and CK2 is not known, we have examined whether the recruitment of PP1 by eIF2 β is a determinant of the rate of translation. For this purpose, wild-type eIF2 β or eIF2 β -KNAKA were transiently expressed in HEK293T cells and the rate of translation was derived from the incorporation of [³⁵S]methionine into proteins. The expression of eIF2 β or the KNAKA-mutant inhibited the rate of translation by 42 ± 7 % and 53 ± 4 % (n= 10), respectively. Thus, the severely decreased ability of the KNAKA-mutant to interact with PP1 did not differentially affect the rate of translation. Consistent with this observation, we found that the addition of equimolar concentrations of eIF2 β -wt or eIF2 β -KNAKA to reticulocyte lysates decreased the rate of translation of a reporter transcript, encoding the histone methyltransferase EZH2, to a similar extent (supplementary Fig. S1). It is worthy of note that EZH2 is not an interactor of PP1 and has no effect on translation. Collectively, these data suggest that the eIF2 β -PP1 interaction is not rate-limiting for protein synthesis.

DISCUSSION

A bioinformatics approach has previously already led to the identification of new members of established families of PP1 interactors [18]. Also, Meiselbach et al. [19] recently showed that a more stringent definition of the RVxF-motif enables a reasonably specific identification of functional RVxF-instances. Here, we report the sequence-alignment assisted identification of eIF2 β as an interactor of PP1. The

sequence similarity between NIPP1 and eIF2 β was not expected since these proteins are functionally unrelated. Indeed, NIPP1 has been implicated in transcription and pre-mRNA splicing but not in translation [27, 28]. The structural similarities between NIPP1 and eIF2 β not only comprised the RVxF-motif but also the flanking sequences of this motif (Fig. 1A). The RVxF-instance of eIF2 β is absent from non-chordates and from some fish species (Fig. 1B), indicating that PP1 binding, via its RVxF-instance, is a property that eIF2 β acquired during metazoan evolution. We have demonstrated by various independent biochemical approaches that the predicted RVxF-instance of eIF2 β is functional (Fig. 4). Moreover, the region of eIF2 β that harbours the RVxF-motif is predicted by the secondary structure prediction programme SCRATCH (<http://www.igb.uci.edu/tools/scratch>) to form an exposed loop, which is also true for RVxF-motifs in other established PP1 interactors [18]. In addition the RVxF-instance of eIF2 β corresponds to the more stringent definition of RVxF-motifs described by Meiselbach et al. [19].

Two PP1 interactors, namely GADD34 and CreP, were already known to target PP1 to the eIF2 complex and to promote thereby the dephosphorylation of Ser51 of eIF2 α [29-31]. Here, we have shown that another subunit of eIF2, namely the β -subunit, directly recruits PP1 (Figs. 2 and 3) and is itself a likely substrate for dephosphorylation by associated PP1 (Fig. 6C and D). It remains to be examined whether eIF2 β is also an *in vivo* substrate of associated PP1 and whether this somehow affects translation. Our preliminary data show that the binding of PP1 to eIF2 β is not rate-limiting for translation under basal circumstances. However, it can not be excluded that eIF2 β -associated PP1 only exerts a translational control for a selected group of transcripts or under specific conditions. Consistent with the role of PP1 as a cellular 'reset' button [14], it can also be envisaged that the dephosphorylation of eIF2 β by associated PP1 is implicated in the recycling of eIF2 β for a next round of translation. Also, since the addition of leptomycin-B, an inhibitor of nuclear export, causes the nuclear accumulation of eIF2 β [32], PP1 may play a regulatory role in the poorly studied nuclear functions of eIF2 β . Intriguingly, the binding of PP1 to eIF2 β promoted the dephosphorylation of eIF2 β but inhibited the dephosphorylation of glycogen phosphorylase and eIF2 α , and did not affect the dephosphorylation of eIF2B ϵ (Fig. 6). Thus, like many PP1-interactors [14], eIF2 β

appears to have a substrate-specifying function. Interestingly, eIF2 β not only binds to PP1 (this work) but also interacts directly with protein kinase CK2 [33]. Thus, eIF2 β may function as a scaffold for the assembly of a signalling complex that includes CK2 and PP1, and that somehow controls the initiation of translation.

In conclusion, we have shown here that PP1 is a physiological interactor of eIF2 β . We have identified a functional RVxF-motif and a second PP1-binding site in the C-terminal half of eIF2 β and have provided evidence that eIF2 β functions as a substrate-specifier for associated PP1. Strikingly, eIF2 β itself emerges as the most likely substrate for associated PP1 and its dephosphorylation depends on a functional RVxF-motif.

ACKNOWLEDGEMENTS

This work was financially supported by the Fund for Scientific Research-Flanders (Grant G.0290.05), a Flemish Concerted Research Action and the Prime Minister's office (IAP/V-05). Nicole Sente provided expert technical assistance. We thank Drs. U. Maitra (Albert Einstein College of Medicine), T. Matsui (Kanazawa Medical University), C. Proud (University of British Columbia), P. Roach (Indiana University) and J. Vandenheede (University of Leuven) for the generous gifts of expression vectors. H.C. is a post-doctoral fellow of the Fund for Scientific Research-Flanders.

Abbreviations

BSA, bovine serum albumin; eIF, eukaryotic initiation factor; PBS, phosphate buffered saline; PP1, protein phosphatase-1; TBS, Tris buffered saline

REFERENCES

1. Preiss, T., and Hentze, W.M. (2003) Starting the protein synthesis machine: eukaryotic translation initiation. *Bioessays* **25**, 1201-1211
2. Algire, M.A., Maag, D., and Lorsch, J.R. (2005) P_i release from eIF2, not GTP hydrolysis is the step controlled by start-site selection during eukaryotic translation initiation. *Mol. Cell* **20**, 251-262
3. Kimball, S.R. (1999) Eukaryotic initiation factor eIF2. *Int. J. Biochem. Cell Biol.* **31**, 25-29

4. Holcik, M., and Sonenberg, N. (2005) Translational control in stress and apoptosis. *Nat. Rev. Mol. Cell. Biol.* **6**, 318-327
5. Kapp, L.D., and Lorsch, J.R. (2004) The molecular mechanics of eukaryotic translation. *Annu. Rev. Biochem.* **73**, 657-704
6. Unbehauen, A., Borukhov, S.I., Hellen, C.U., and Pestova, T.V. (2004) Release of initiation factors from 48S complexes during ribosomal subunit joining and the link between establishment of codon-anticodon base-pairing and hydrolysis of eIF2-bound GTP. *Genes Dev.* **18**, 3078-3093
7. Hashimoto, N.N., Carnevalli, L.S., and Castilho, B.A. (2002) Translation initiation at non-AUG codons mediated by weakened association of eukaryotic initiation factor (eIF) 2 subunits. *Biochem. J.* **367**, 359-368
8. Wang, X., Paulin, F.E., Campbell, L.E., Gomez, E., O'Brien, K., Morrice, N., and Proud, C.G. (2001) Eukaryotic initiation factor 2B: Identification of multiple phosphorylation sites in the epsilon-subunit and their functions in vivo. *EMBO J.*, **20**, 4349-4359
9. Paulin, F.E., Campbell, L.E., O'Brien, K., Loughlin, J., and Proud, C.G. (2001) Eukaryotic translation initiation factor 5 (eIF5) acts as a classical GTP-ase activator protein. *Curr. Biol.* **11**, 55-59
10. Das, S., Ghosh, R., and Maitra, U. (2001) Eukaryotic translation initiation factor 5 functions as a GTP-ase activating protein. *J. Biol. Chem.* **276**, 6720-6726
11. Kimball, S.R., Heinzinger, N.K., Horetsky, R.L., and Jefferson, L.S. (1998) Identification of interprotein interactions between the subunits of eukaryotic initiation factors eIF2 and eIF2B. *J. Biol. Chem.* **273**, 3039-3044
12. Ting, N.S., Kao, P.N., Chan, D.W., Lintott, L.G., Lees-Miller, S.P. (1998) DNA-dependent protein kinase interacts with antigen receptor response element binding proteins NF90 and NF45. *J. Biol. Chem.* **273**, 2136-2145
13. Welsh, G., Price, N.T., Bladergroen, B.A., Bloomberg, G., and Proud, C.G. (1994) Identification of novel phosphorylation sites in the β -subunit of translation initiation factor eIF-2. *Biochem. Biophys. Res. Commun.* **201**, 1279-1288
14. Ceulemans, H., and Bollen, M. (2004) Functional diversity of protein phosphatase-1, a cellular economizer and reset button. *Physiol. Rev.* **84**, 1-39
15. Bollen, M. (2001) Combinatorial control of protein phosphatase-1. *Trends Biochem. Sci.* **26**, 426-431

16. Wakula, P., Beullens, M., Ceulemans, H., Stalmans, W., and Bollen, M. (2003) Degeneracy and function of the ubiquitous RVXF motif that mediates binding to protein phosphatase-1. *J. Biol. Chem.* **278**, 18817-18823
17. Egloff, M.P., Johnson, D.F., Moorhead, G., Cohen, P.T., Cohen, P., and Barford, D. (1997) Structural basis for the recognition of regulatory subunits by the catalytic subunit of protein phosphatase 1. *EMBO J.* **16**, 1876-1887
18. Ceulemans, H., Stalmans, W., and Bollen, M. (2002) Regulator-driven functional diversification of protein phosphatase-1 in eukaryotic evolution. *Bioessays* **24**, 371-381
19. Meiselbach, H., Sticht, H., and Enz, R. (2006) Structural analysis of the protein phosphatase 1 docking motif: molecular description of binding specificities identifies interacting proteins. *Chem Biol.* **13**, 49-59
20. DeGuzman, A., and Lee, E.Y.C. (1988) Preparation of low-molecular-weight forms of rabbit muscle protein phosphatase. *Methods Enzymol.* **159**, 356-368
21. Fischer, E.H., and Krebs, E.G. (1958) The isolation and crystallization of rabbit skeletal muscle phosphorylase b. *J. Biol. Chem.* **231**, 65-71
22. Agostinis, P., Derua, R., Sarno, S., Goris, J., and Merlevede, W. Phosphorylation of the phosphatase modulator subunit (inhibitor-2) by casein kinase-1. *FEBS Lett.* **305**, 121-124
23. Beullens, M., Van Eynde, A., Stalmans, W., and Bollen, M. (1992) The isolation of novel inhibitory polypeptides of protein phosphatase 1 from bovine thymus nuclei. *J. Biol. Chem.* **267**, 16538-16544
24. Sander, C., and Schneider, R. (1991) Database of homology-derived structures and the structural meaning of sequence alignment. *Proteins* **9**, 56-58
25. Bollen, M., and Stalmans, W. (1992) The structure, role, and regulation of type 1 protein phosphatases. *Crit. Rev. Biochem. Mol. Biol.* **27**, 227-281
26. Beullens, M. Vancauwenbergh, S., Morrice, N., Derua, R., Ceulemans, H., Waelkens, E., and Bollen, M. (2005) Substrate specificity and activity regulation of protein kinase MELK. *J. Biol. Chem.* **280**, 40003-40011
27. Jin, Q., Van Eynde, A., Beullens, M., Roy, N., Thiel, G., Stalmans, W., and Bollen, M. (2003) The protein phosphatase-1 (PP1) regulator, nuclear inhibitor of PP1 (NIPP1), interacts with the polycomb group protein, embryonic development (EED), and functions as a transcriptional repressor. *J. Biol. Chem.* **278**, 30677-30685

28. Beullens, M., and Bollen, M. (2002) The protein phosphatase-1 regulator NIPP1 is also a splicing factor involved in a late step of spliceosome assembly. *J. Biol. Chem.* **277**, 19855-19860
29. Novoa, I., Zheng, H., Harding, H.P., and Ron, D. (2001) Feedback inhibition of the unfolded protein response by GADD34-mediated dephosphorylation of eIF2 α . *J. Cell Biol.* **153**, 1011-1022
30. Connor, J.H., Weiser, D.C., Li, S., Hallenbeck, J.M., and Shenolikar, S. Growth arrest and DNA damage-inducible protein GADD34 assembles a novel signaling complex containing protein phosphatase 1 and inhibitor 1. *Mol. Cell. Biol.* **21**, 6841-6850
31. Jousse, C., Oyadomari, S., Novoa, I. Lu, P., Zhang, Y., Harding, H.P., and Ron, D. (2003) Inhibition of a constitutive translation initiation factor 2 α phosphatase, CreP, promotes survival of stressed cells. *J. Cell Biol.* **163**, 767-775
32. Bohnsack, M.T., Regener, K., Schwappach, B., Saffrich, R., Paraskeva, E., Hartmann, E., and Gorlich, D. (2002) Exp5 exports eEF1A via tRNA from nuclei and synergizes other transport pathways to confine translation to the cytoplasm. *EMBO J.* **21**, 6205-6215
33. Llorens, F., Roher, N., Miro, F.A., Sarno, S., Ruiz, F.X., Meggio, F., Plana, M., Pinna, L., and Itarte, E. (2003) Eukaryotic translation initiation factor eIF2 β binds to protein kinase CK2: effects on CK2 α activity. *Biochem. J.* **375**, 623-631
34. Beullens, M., Vulsteke, V., Van Eynde, A., Jagiello, I., Stalmans, W., and Bollen, M. (2000) The C-terminus of NIPP1 (nuclear inhibitor of protein phosphatase-1) contains a novel binding site for protein phosphatase-1 that is controlled by tyrosine phosphorylation and RNA binding. *Biochem. J.* **352**, 651-658

LEGENDS TO THE FIGURES

Figure 1 Similarities between eIF2 β and the central domain of NIPP1

(A) Alignment of the corresponding parts of human NIPP1 and eIF2 β sequences by the MaxHom programme. Numbers outside the alignments indicate NIPP1 (top) and eIF2 β (bottom) residues; numbers within the alignments indicate the insertions (not

to scale) of non-conserved fragments in eIF2 β . Identical residues are boxed in black. Residues conserved within the same group [positively charged (H,K,R); negatively charged (D,E); small residues (G,A,S,T); bulky hydrophobic residues (I,L,V,M,F,Y)] are boxed in grey. **(B)** The table shows the sequence of RVxF-motifs with respect to a conserved poly-lysine tract. The residues of the RVxF-motif are in bold. The N-terminal basic residues and the C-terminal acidic residues are underlined.

Figure 2 eIF2 β is a specific inhibitor of PP1

(A) An overlay with digoxigenin-labelled catalytic subunit of PP1 shows binding to eIF2 β wt but not to the mutant eIF2 β -(1-145)-KNAKA (see also Fig. 5). NIPP1 was included as a positive control and NIPP1-(1-329)-RATA, a NIPP1-mutant that does not bind to PP1 (34), and BSA were used as negative controls. 380 pmol of each protein was used. **(B)** The effect of the indicated concentrations of eIF2 β on the phosphorylase phosphatase activity of PP1 and PP2A. The results represent means \pm S.E.M. of three assays.

Figure 3 Co-immunoprecipitation experiments confirm the eIF2 β -PP1 interaction

(A) Lysates from HEK293T cells co-expressing EGFP-PP1 α and FLAG-eIF2 β were used for immunoprecipitations with protein-A-TSK and anti-EGFP antibodies, anti-FLAG antibodies or without antibodies (control). The presence of EGFP-PP1 and FLAG-eIF2 β was detected by western analysis with anti-EGFP and anti-FLAG antibodies. **(B and C)** Endogenous eIF2 β from HEK293T cell lysates was immunoprecipitated and the precipitates were screened for the presence of eIF2 β and PP1 by immunoblotting **(B)** and for trypsin-revealed phosphorylase phosphatase activities in the absence and presence of 1 μ M NIPP1 **(C)**.

Figure 4 eIF2 β contains a functional RVxF-motif

(A) Equimolar amounts of recombinant His-eIF2 β -wt and His-eIF2 β -KNAKA, coupled to Ni²⁺-Sepharose, were incubated with the catalytic subunit of PP1, purified from rabbit skeletal muscle. The retained phosphorylase phosphatase activities were quantified after the release of PP1 from the beads by pre-incubation

with trypsin. **(B)** Effect of eIF2 β -wt and eIF2 β -KNAKA on the phosphorylase phosphatase activities of the catalytic subunit of PP1. **(C)** Effect of the addition of buffer (control), 50 μ M of synthetic decapeptide NIPP1-(197-206) (RVTF) or 50 μ M of a variant peptide in which the RVTF-sequence was replaced by the RATA-sequence, on the inhibition of PP1 by eIF2 β . All results are means \pm S.E.M. for three phosphatase assays.

Figure 5 Mapping of a second PP1 interaction site in eIF2 β

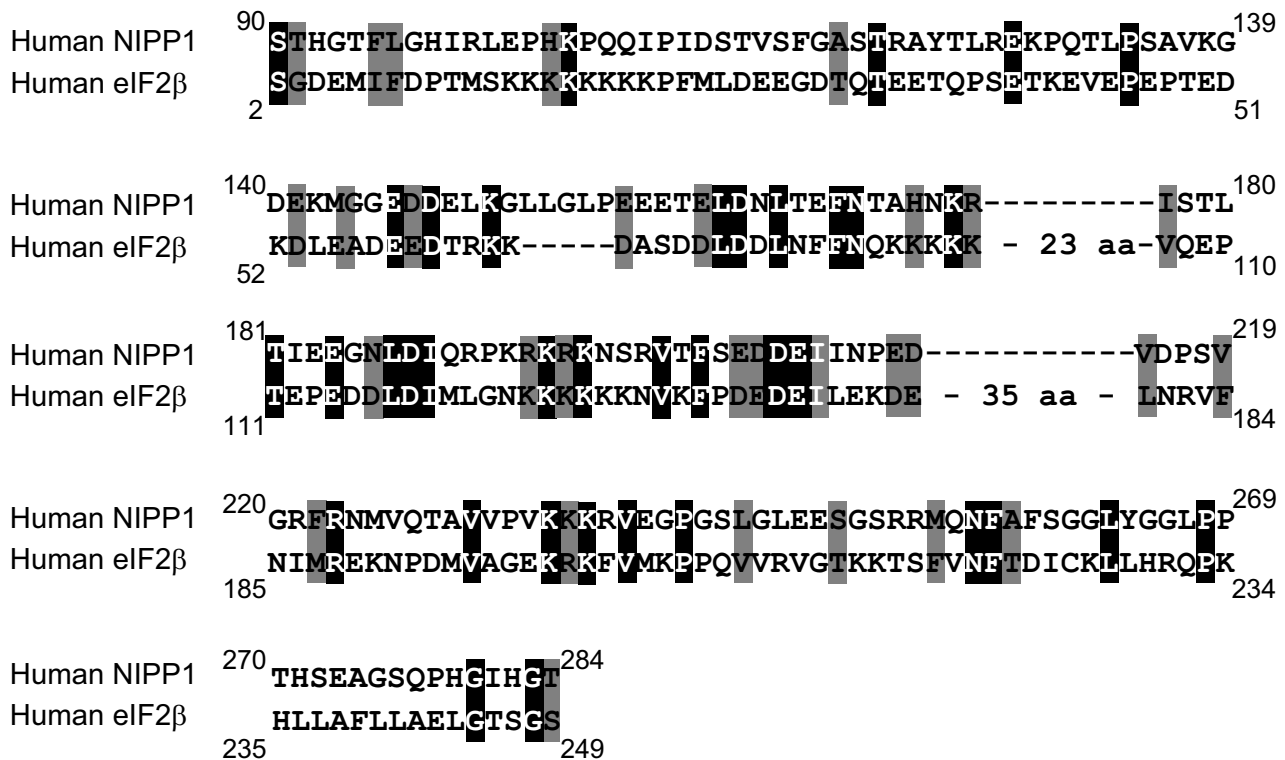
The figure shows the His-tagged eIF2 β mutants/fragments that were used for PP1 binding assays. Equimolar concentrations of the fusions, linked to Ni²⁺-Sepharose, were incubated with an equal amount of purified PP1. The right column shows the amount of retained PP1, as derived from the trypsin-revealed phosphorylase phosphatase activity and expressed as a percentage of binding to wild-type eIF2 β . The results are means \pm S.E.M. for 4-8 phosphatase assays.

Figure 6 In vitro dephosphorylation of eIF2 α , eIF2B ϵ and eIF2 β by PP1

The panels show time courses of dephosphorylation of the indicated substrates by 88 nM PP1 in the presence of buffer, 1 μ M eIF2 β -wt or eIF2 β -KNAKA. Prior to the addition of PP1, phosphorylation reactions were terminated by the addition of EDTA. **(A)** Dephosphorylation of MELK-phosphorylated Ser51 in eIF2 α , as visualized by anti-phospho-Ser51 antibodies. **(B)** Dephosphorylation of eIF2B ϵ phosphorylated by protein kinase CK1, as visualized by autoradiography. **(C and D)**. An autoradiogram of the dephosphorylation of eIF2 β and eIF2 β -KNAKA, phosphorylated by protein kinase CK2 **(C)** or protein kinase A **(D)**.

Fig. 1

A.

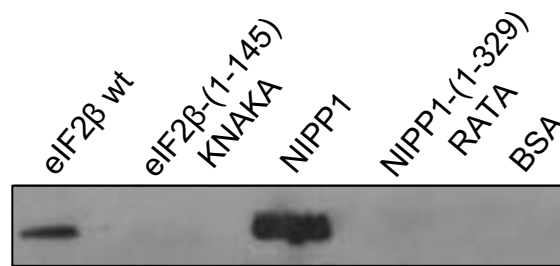


B.

Species	Residues	Sequence
<i>Homo sapiens</i>	124-143	KKKKK KNV K F PDEDEI L E K D
<i>Gallus gallus</i>	120-139	KKKKK KFV K F PDEDEI L E K D
<i>Xenopus tropicalis</i>	125-144	KKKKK KNV K F PEEDDT L DRD
<i>Takifugu rubripes</i>	119-137	KKKK S K K V E I-DEGDAL D KD
<i>Tetraodon nigroviridis (a puffer fish)</i>	124-142	KKK K T KKV D F -DEGDT L D K D
<i>Danio rerio</i>	120-137	KKKK P K--K V K E D T S Q S K E
<i>Drosophila melanogaster</i>	111-130	KKKK S K K K E L D E L F A D Q A D D
<i>Ciona intestinalis (a sea squirt)</i>	119-138	KKKK K H K I L P D D S E KKV S F A
<i>Saccharomyces cerevisiae</i>	84-103	KKK K T K D S S V D A F E K E L A K A

Fig. 2

A.



B.

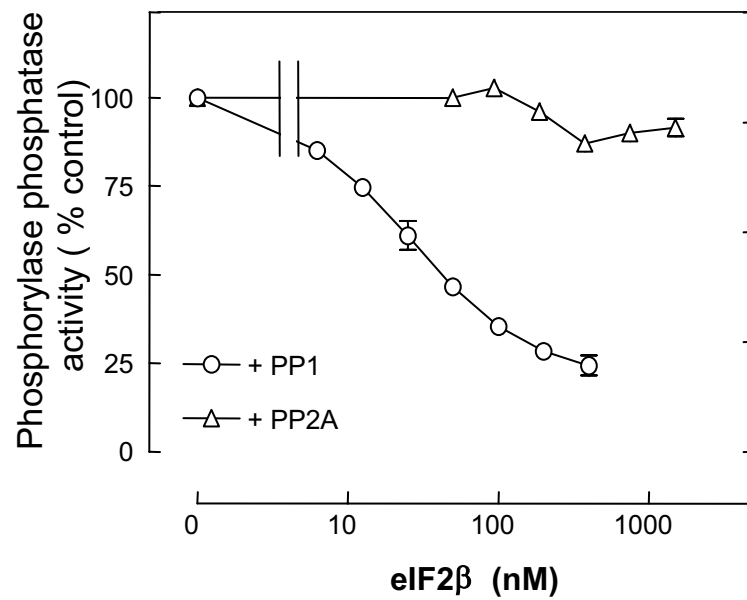


Fig. 3

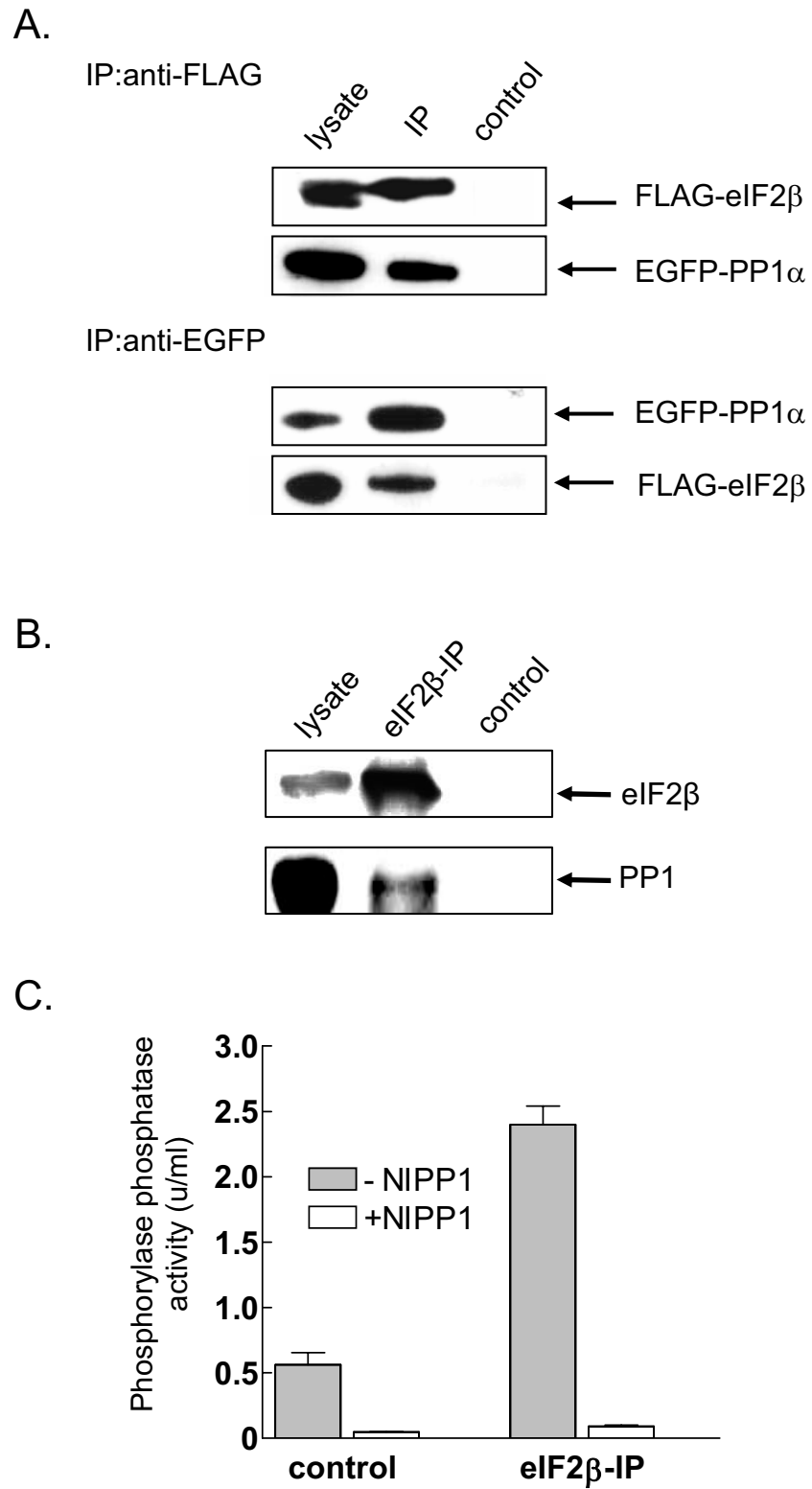
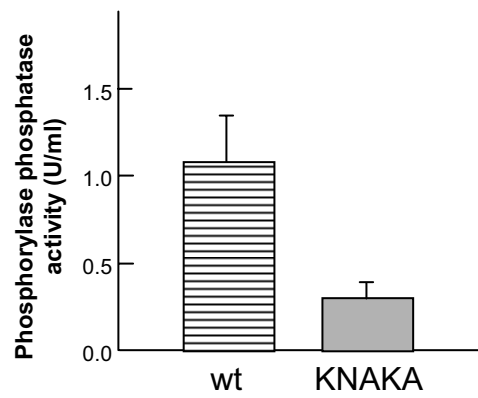
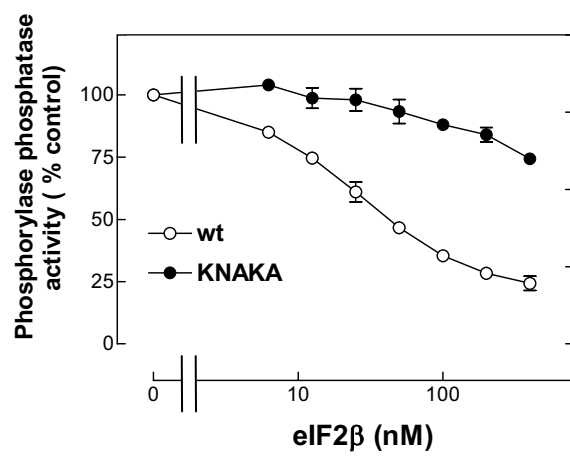


Fig. 4

A.



B.



C.

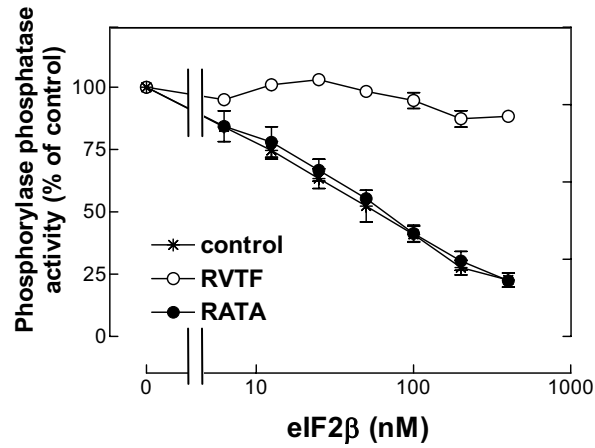


Fig. 5

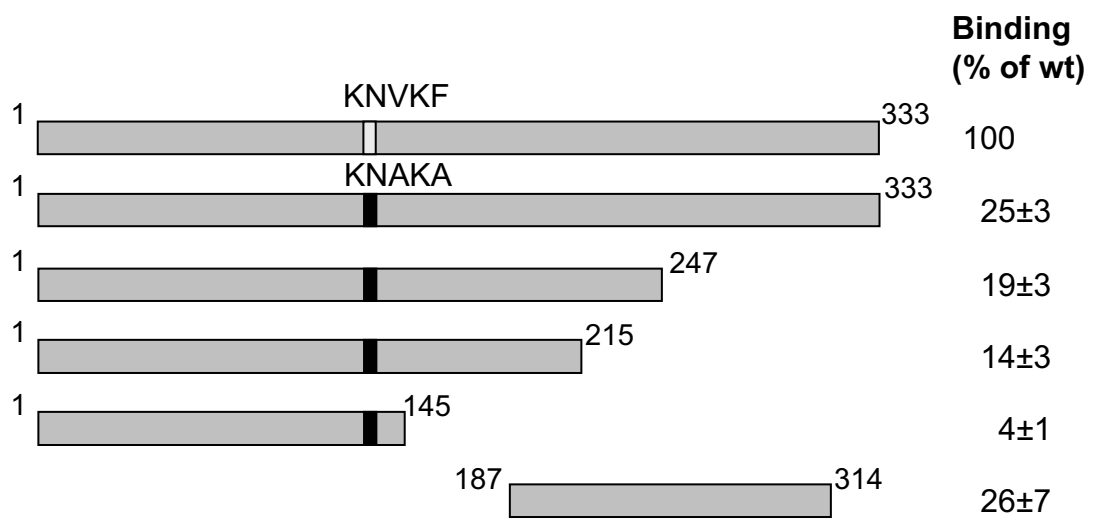
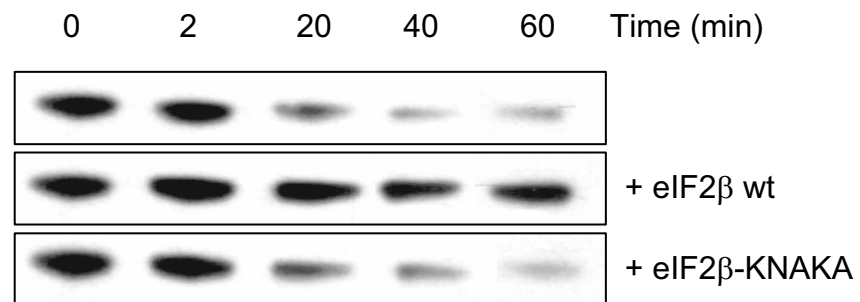
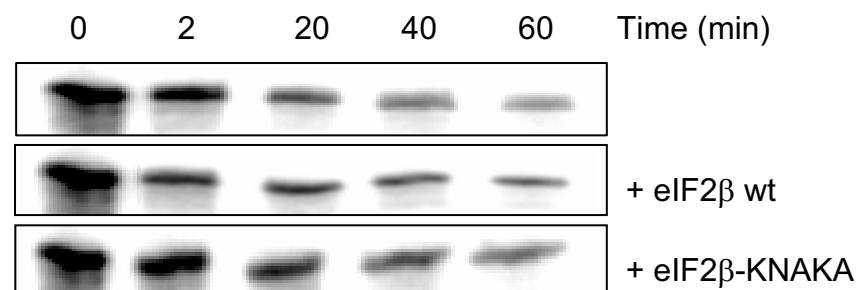


Fig. 6

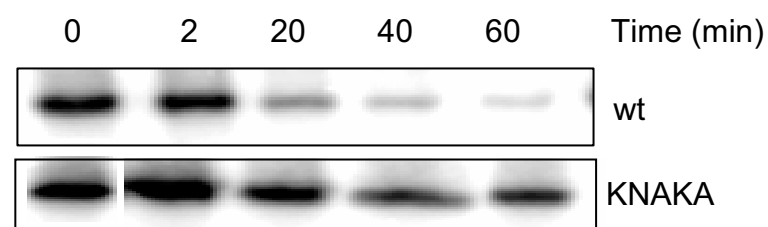
A. Dephosphorylation of eIF2 α (Ser51)



B. Dephosphorylation of eIF2B ϵ (Ser464)



C. Dephosphorylation of eIF2 β (Ser2/Ser67)



D. Dephosphorylation of eIF2 β (Ser218)

