



HAL
open science

Localisation of the binding site of the C-terminal domain of cardiac myosin-binding protein-C on the myosin rod

Emily Flashman, Hugh Watkins, Charles Redwood

► To cite this version:

Emily Flashman, Hugh Watkins, Charles Redwood. Localisation of the binding site of the C-terminal domain of cardiac myosin-binding protein-C on the myosin rod. *Biochemical Journal*, 2006, 401 (1), pp.97-102. 10.1042/BJ20060500 . hal-00478571

HAL Id: hal-00478571

<https://hal.science/hal-00478571>

Submitted on 30 Apr 2010

HAL is a multi-disciplinary open access archive for the deposit and dissemination of scientific research documents, whether they are published or not. The documents may come from teaching and research institutions in France or abroad, or from public or private research centers.

L'archive ouverte pluridisciplinaire **HAL**, est destinée au dépôt et à la diffusion de documents scientifiques de niveau recherche, publiés ou non, émanant des établissements d'enseignement et de recherche français ou étrangers, des laboratoires publics ou privés.

Localisation of the binding site of the C-terminal domain of cardiac myosin binding protein-C on the myosin rod

Emily Flashman, Hugh Watkins and Charles Redwood*

Department of Cardiovascular Medicine, University of Oxford, Oxford UK

* Corresponding author: Dr. Charles Redwood, Department of Cardiovascular Medicine, University of Oxford, Wellcome Trust Centre of Human Genetics, Oxford OX3 7BN, UK. Telephone: +44 1865 287663; Fax: +44 1865 287586; email: credwood@well.ox.ac.uk

Short title: Interaction site of myosin binding protein-C on light meromyosin

Keywords: myosin; thick filament; cardiomyopathy; mutation

Synopsis

Cardiac myosin binding protein-C (cMyBP-C) is a sarcomeric protein involved both in thick filament structure and in the regulation of contractility. It is composed of 8 immunoglobulin-like and 3 fibronectin-like domains (termed C0-C10). Mutations in the gene encoding cMyBP-C are a principal cause of hypertrophic cardiomyopathy (HCM). cMyBP-C binds to the light meromyosin (LMM) portion of the myosin rod via its C-terminal domain, C10. We investigated this interaction in detail to determine whether HCM mutations in β myosin heavy chain located within the LMM portion alter the binding of cMyBP-C; and to define the precise region of LMM that binds C10 to aid in developing models of the arrangement of MyBP-C on the thick filament. In cosedimentation experiments recombinant C10 bound full length LMM with K_d of 3.52 μ M and at a stoichiometry of 1.14 C10 per LMM. C10 was also shown to bind with similar affinity to LMM containing either the HCM mutations Ala1379Thr or Ser1776Gly, suggesting that these HCM mutations do not perturb C10 binding. Using a range of N-terminally truncated LMM fragments, the cMyBP-C binding site on LMM was shown to lie between residues 1554 and 1581. As a previous report indicated that acidic residues on myosin mediate the C10 interaction, three clusters of acidic amino acids (Glu1554/Glu1555, Glu1571/Glu1573 and Glu1578/Asp1580/Glu1581/Glu1582) were mutated in full length LMM and the proteins tested for C10 binding. No effect of these mutations on C10 binding was however detected. We interpret our data with respect to the localisation of the proposed trimeric collar on the thick filament.

Introduction

Myosin binding protein-C (MyBP-C) is a modular protein with the cardiac isoform (cMyBP-C) consisting of eleven domains (referred to as C0 to C10), eight of which are immunoglobulin I-like with the other three being fibronectin-3 domains. MyBP-C has been hypothesised to contribute to myosin filament structure through an interaction at its C-terminus with the filament backbone, and a role in the regulation of contraction *via* an interaction at its N-terminus with the subfragment-2 region of myosin (reviewed in [1]). The precise arrangement and function of MyBP-C in the sarcomere is yet to be fully elucidated, although a trimeric collar arrangement around the thick filament has been proposed [2]. Myosin heavy chains (MyHCs) form the bulk of the myosin molecule and are made up of globular heads, which take part in the cross-bridge cycle, and an α -helical coiled-coil rod region. The formation of this coiled-coil structure is mediated by the seven amino acid (heptad) motif which repeats throughout the rod sequence. The *a* and *d* positions of the heptad repeat (*abcdefg*) are typically small hydrophobic residues that stabilise the interaction of the two helical chains [3]. There is also a marked 28-residue periodicity defined by regular charge periodicity [4]. The LMM sequence periodicity is interrupted by four single amino acids, termed skip residues, which are believed to contribute to the flexibility of the myosin rod [5]. The myosin rod can be separated by proteolytic cleavage into myosin subfragment-2 (S2) and light meromyosin (LMM), which forms the backbone of the thick filament.

It has been well documented that the C-terminal C10 domain of MyBP-C is responsible for binding to the LMM portion of the myosin rod [6-9], and that this interaction, along with the presence of other MyBP-C C-terminal domains, is necessary for proper localisation of MyBP-C in the sarcomere [10, 11]. It is also

likely that the correct localisation of MyBP-C on the thick filament is necessary for MyBP-C-mediated regulation of contraction. Previous work examining the interaction between MyBP-C and LMM has suggested a binding stoichiometry of 0.6-0.7:1 [6-9], and at less than 1:1, this suggests a single binding site for C10 on LMM. However, while the binding motifs for other thick filament-associated proteins titin and myomesin have been located [12, 13], the specific binding site for MyBP-C has not been reported.

The autosomal dominant disorder hypertrophic cardiomyopathy (HCM) is caused by mutations in genes encoding contractile proteins. The two most commonly affected genes are those encoding cMyBP-C and β myosin heavy chain (β MyHC), each accounting for at least one third of reported mutations [14, 15]. Many of the cMyBP-C mutations are predicted to result in truncated proteins lacking the C10 domain and these mutants are unlikely to incorporate correctly into the thick filament [1]. Most β MyHC mutations cause single amino acid substitutions within the myosin head and these result in alterations in motor function [16]. However a few missense HCM mutations have been shown to lie in the filament-forming LMM region of β MyHC and these are most unlikely to directly impact on crossbridge activity. We hypothesise that at least some of the β MyHC LMM mutations may affect cMyBP-C attachment to the thick filament and hence act in a similar way to truncation mutations in cMyBP-C.

In order to test our hypothesis we examined the ability of two HCM β MyHC LMM mutations identified in our laboratory [17] to bind the C10 domain of cMyBP-C. Furthermore, we have defined the location of C10 binding on LMM using a series of deletion constructs in cosedimentation experiments, and interpret this data with respect to the position of the proposed MyBP-C trimeric collar on the thick filament.

Experimental

Cloning, Expression and Purification of MyBP-C C10 and LMM Deletion Constructs

The C10 domain sequence (residues 1180-1274) was amplified from full length human cMyBP-C cDNA and inserted into the bacterial expression vector pMW172 [18]. Transformed BL21(DE3)pLysS cells were grown and induced with IPTG at 37°C according to standard protocols [19]. Cells were lysed in the presence of protease inhibitors in 50mM TrisHCl pH7.5, 25% sucrose, 300mM NaCl, 1mM EDTA, 1mM 2-mercaptoethanol by sonication. Soluble protein was purified from the lysis supernatant by cation exchange chromatography on a MonoS column (Amersham Pharmacia Biotech).

The full length LMM DNA sequence (amino acids 1185-1935) was amplified from a human cardiac cDNA library (Clontech) and LMM deletion constructs were engineered from this initial clone using PCR. Missense mutations within the LMM sequence were inserted using a two-step PCR-based protocol. All LMM sequences were inserted into pET-28a (Novagen) and the proteins over-expressed in BL21(DE3)pLysS cells. The harvested cell pellets were resuspended, in the presence of protease inhibitors, in 1M KCl, 50mM TrisHCl pH7.5, 25% sucrose, 1mM EDTA, 1mM 2-mercaptoethanol and lysed by sonication. The lysis supernatant was heated to 90°C, rapidly cooled and then centrifuged at 45,000g for 20 minutes at 4°C. At high ionic strength, LMM does not denature upon heating and remains in soluble form [20]. The supernatant was filtered through glass wool and then diluted 10-fold with cold deionised water to allow LMM to polymerise. Upon centrifugation, LMM filaments formed a pellet which was resuspended in 2-5mls 1M KCl, 20mM imidazole pH 7.0, 1mM DTT.

Cosedimentation Experiments

Proteins were dialysed into myosin binding buffer (100mM KCl, 20mM imidazole pH 7.0, 1mM DTT). Precise quantities of protein were mixed in various ratios, or individually as control experiments, to a total volume of 100 μ l, and ultracentrifuged at 250,000g, 4°C for 10 minutes. 30 μ l protein samples were taken from the total mix (pre-centrifugation) and soluble fraction, and pelleted protein was resuspended in 93 μ l 1 \times SDS PAGE loading buffer. Samples were analysed by SDS-PAGE and the gels stained with Coomassie Blue. When required, protein bands were quantitated by scanning densitometry and the data fitted to the equation $\text{bound} = \frac{B_{\text{max}} * \text{free}}{K_d + \text{free}}$ using Kaleidagraph (Synergy Software). Three separate sets of data were generated and fitted for each LMM and the K_d and B_{max} expressed as mean \pm standard error.

For determination of the salt dependence of the solubility of myosin fragments, myosin binding buffer with KCl concentrations of between 100 and 300 mM were used.

Results

The interaction of C10 with LMM and the influence of β MyHC HCM mutations

The binding of recombinant C10 domain to myosin was carried out using a recombinant LMM fragment of human β MyHC corresponding to residues 1185 to 1935, that is from the first skip residue to the C-terminus. Affinity measurements were performed by cosedimentation in myosin binding buffer containing 100mM KCl using 4 μ M LMM and 0-12 μ M C10. LMM forms filaments at this ionic strength and under the sedimentation conditions used all of the LMM is found in the pellet (Figures 1A and B) whereas the C10 domain remains soluble (Figure 1A). These experiments showed that C10 bound with a K_d of 3.52 \pm 0.28 μ M (n=3) and at a maximum stoichiometry of 1.14 \pm 0.09 C10/LMM (n=3), consistent with reports of a single binding site for C10 on myosin [6, 7, 9] (Figure 1C). Similar experiments were carried out with full length LMM containing either Ala1379Thr or Ser1776Gly, both mutations reported to cause HCM [17]. These proteins were purified as for wild type LMM (Figure 1B inset) and the mutations were found not have a significant effect on filament solubility (Figure 1B). C10 bound each with similar affinity to wild type LMM (Ala1379Thr K_d =3.08 \pm 0.32 μ M (n=3), Ser1776Gly K_d =3.82 \pm 0.16 μ M (n=3)) and with stoichiometry again close to unity (1.02 \pm 0.07 and 1.16 \pm 0.11 C10/LMM for Ala1379Thr and Ser1776Gly respectively) thus suggesting that these HCM mutations do not affect cMyBP-C attachment to the thick filament (Figure 1C).

C10 Binding to LMM Deletion Fragments

Location of the region on myosin responsible for C10 binding was attempted by generating a series of recombinant N-terminally truncated LMMs. All of the expressed fragments contained the C-terminal 'assembly competence domain' (amino

acids 1871-1899), which is necessary for proper formation of myosin filaments at physiological ionic strengths [21], and so could be used in cosedimentation experiments. Initially, the skip residues in the LMM sequence were used as markers to define the N-terminus of the deletion fragments and the expressed fragments were termed LMM2-4 (starting at the second skip residue Glu1385), LMM3-4 (starting at the third skip residue Glu1582) and LMM4 (starting at the final skip residue Gly1807) (Figure 2A). Cosedimentation experiments were carried out using 6 μ M C10 and 6 μ M of the LMM fragments. C10 was shown to cosediment with full length LMM and LMM 2-4, but not with LMM 3-4 or LMM 4 (Figure 2B). Titration experiments, carried out using constant 4 μ M LMM2-4, showed that the K_d of C10 for this fragment was 3.35 \pm 0.17 μ M (n=3), not significantly different from full length LMM.

The above data suggest that the C10 binding site lies between the second and third skip residues (amino acids 1385 and 1582) of human β MyHC. To obtain finer definition of the region involved, further N-terminal truncations of LMM were designed by successive deletion of 28 amino repeats between the second and third skip residues (Figure 3A). Initially, a deletion construct was designed with the N-terminus at LMM residue 1497 (LMM 2.5-4), and it was found that C10 did indeed bind to this fragment (Figure 3B). The C10 binding site therefore lies to the C-terminus of this residue, so deletion fragments LMM 2.6-4 and 2.7-4 were designed and prepared. The results in Figure 3B show that C10 does bind to both LMM 2.6-4 and LMM 2.7-4, and re-confirms that binding does not occur to LMM 3-4. This suggests that the binding site for C10 is between amino acids 1554 and 1581.

Identification of the Residues Involved in the Interaction

Alignment of the identified C10-binding sequence of β MyHC LMM with the equivalent region from other mammalian species, non-mammalian species and different muscle isoforms, shows this sequence to be highly conserved (Figure 4). There is a very high degree of identity with sequences from other mammalian species (e.g. 100% identity with rat and mouse α -myosin), and also of conservative replacement of amino acids in non-mammalian species and non-striated muscle isoforms, although this high sequence homology was not unique to the 28 amino acid region of interest (the same level of homology is also seen in the flanking repeats). A previous study has indicated that acidic residues on myosin mediate its interaction with the C10 domain [22]. In order to investigate whether acidic groups within the defined region were contributing to the binding, three different clusters of acidic amino acids occurring in surface positions of the heptad repeat (Glu1554/Glu1555, Glu1571/Glu1573 and Glu1578/Asp1580/Glu1581/Glu1582) were individually mutated to their amide equivalents in full length LMM and the proteins tested for C10 binding. Each mutant LMM sedimented as wild type under the standard conditions used (data not shown). In cosedimentation assays with C10, the measured affinities of each mutant LMM did not significantly vary from wild type: K_d s for the Glu1554/Glu1555, Glu1571/Glu1573 and Glu1578/Asp1580/Glu1581/Glu1582 were 4.01 ± 0.31 , 3.40 ± 0.11 and $3.80 \pm 0.24 \mu\text{M}$ respectively ($n=3$ in each case) compared to $3.52 \pm 0.28 \mu\text{M}$ for wild type. This suggests that the negative charge provided individually by these clusters does not contribute significantly to C10 binding.

Discussion

One aim of this study was to test the hypothesis that HCM mutations within the LMM region of β MyHC may interfere with the attachment of cMyBP-C to the thick filament. By measuring the affinity of soluble recombinant C10 domain for filamentous LMM *in vitro*, it was found that wild type LMM bound with a similar affinity as the Ala1379Thr and Ser1776Gly HCM mutants. This suggests that these particular HCM mutations do not act by reducing cMyBP-C/myosin interactions and are more likely to cause aberrant thick filament structure or stability. Furthermore, since our initial report in 2002 [17] of these two HCM mutations in the β MyHC LMM domain, at least another 17 missense HCM mutations in this region have been reported [14, 23-25] as well as at least four mutations that cause dilated cardiomyopathy [26, 27]. Interestingly, not one of these mutations affects a residue within the defined 28 amino acid binding site suggesting that cardiomyopathy mutations in LMM in general do not interfere with MyBP-C binding.

The expression and purification of deletion fragments of the LMM portion of the myosin rod, and the filamentous nature of LMM at low ionic strengths has allowed determination of the region of LMM that binds C10 by cosedimentation assays. The binding site is contained within a 28 amino acid sequence, 1554-1581, immediately N-terminal to the third skip residue in the LMM sequence. This lies within the broadly-defined myomesin and M-protein binding region (residues 1505-1673 of β MyHC) [12] but is distinct from the proposed titin binding site (amino acids 1815-1831) [13]. C10 and myomesin or M-protein are unlikely to bind to the same LMM molecule, as the latter are structural proteins in the M band of the sarcomere, whereas MyBP-C occurs in the C zone. The residues of the proposed site are highly conserved within mammalian striated myosins (Figure 4). Earlier evidence had been

put forward to suggest that the C10/myosin interaction involves acidic residues on LMM [22]; however, the mutation of residues Glu1554, Glu1555, Glu1571, Glu1573, Glu1578, Asp1580, Glu1581 and Glu1582 caused no effect on C10 affinity, suggesting that these particular acidic groups are not involved.

The experiments carried out assume that all the deletion fragments form similar structures under the experimental conditions in such a way that C10 could bind to the protein given the presence of a binding site. All deletion constructs appeared to retain their insolubility in low salt buffers, as none were detected in significant quantities in the soluble supernatant after centrifugation (see Figure 2). However, ordered filament formation may also be a factor necessary for C10 binding, and the insolubility of the fragments does not necessarily mean that ordered filaments are formed. It is possible that constructs LMM 3-4 and LMM 4, despite containing the assembly competence domain, could not form these filaments, and thus not bind C10. Myosin rod deletion constructs beginning at amino acid 1661 have been seen to form paracrystals, however constructs beginning at amino acid 1758 could not [21]. The N-terminus of both these constructs falls between skip residues 3 and 4, suggesting that LMM 3-4 could form paracrystals in an equal manner to full length LMM, yet C10 does not bind to this fragment, supporting our proposed binding site.

These data allow the prediction of the relative position of C10, and thus the MyBP-C collar, on the thick filament and this will be useful in the development of models of thick filament structure. The precise position of titin, which interacts with both myosin and cMyBP-C, remains to be elucidated. This protein lies parallel to the myosin filament [28], with its 11×11 domain superrepeat of IgI-like and Fn3 domains present in the A band [29, 30]. Titin binds to MyBP-C domains C9 and/or C10 [31], both of these domains being arranged circumferentially to the MyBP-C-

LMM binding site according the trimeric collar model [2]. Although it is known that it is the first domain in each titin 11 × 11 domain superrepeat that binds to MyBP-C [31], there has been no specific domain within the repeat identified as responsible for myosin binding. Further work using, for example, antibody staining should be carried out to clarify this arrangement.

Acknowledgements

This work was funded by the British Heart Foundation.

References

- 1 Flashman, E., Redwood, C., Moolman-Smook, J. and Watkins, H. (2004) Cardiac Myosin Binding Protein C: Its Role In Physiology And Disease. *Circ. Res.* **94**, 1279-1289
- 2 Moolman-Smook, J., Flashman, E., De Lange, W., Li, Z., Corfield, V., Redwood, C. and Watkins, H. (2002) Identification of novel interactions between domains of Myosin binding protein-C that are modulated by hypertrophic cardiomyopathy missense mutations. *Circ. Res.* **91**, 704-11
- 3 Cohen, C. and Parry, D. A. D. (1986) α -Helical coiled coils - a widespread motif in proteins. *Trends in Biochemical Sciences* **11**, 245-248
- 4 McLachlan, A. D. and Karn, J. (1982) Periodic Charge Distributions in the myosin rod amino acid sequence match cross-bridge spacings in muscle. *Nature* **299**, 226-231
- 5 Offer, G. (1990) Skip residues correlate with bends in the myosin tail. *J. Mol. Biol.* **216**, 213-8
- 6 Brown, L. J., Singh, L., Sale, K. L., Yu, B., Trent, R., Fajer, P. G. and Hambly, B. D. (2002) Functional and spectroscopic studies of a familial hypertrophic cardiomyopathy mutation in Motif X of cardiac myosin binding protein-C. *Eur. Biophys. J.* **31**, 400-8
- 7 Alyonycheva, T. N., Mikawa, T., Reinach, F. C. and Fischman, D. A. (1997) Isoform-specific interaction of the myosin-binding proteins (MyBPs) with skeletal and cardiac myosin is a property of the C-terminal immunoglobulin domain. *J.Biol.Chem.* **272**, 20866-20872
- 8 Moos, C., Offer, G., Starr, R. and Bennett, P. (1975) Interaction of C-protein with myosin, myosin rod and light meromyosin. *J.Mol.Biol.* **97**, 1-9
- 9 Okagaki, T., Weber, F. E., Fischman, D. A., Vaughan, K. T., Mikawa, T. and Reinach, F. C. (1993) The major myosin-binding domain of skeletal muscle MyBP-C (C protein) resides in the COOH-terminal, immunoglobulin C2 motif. *J.Cell Biol.* **123**, 619-626
- 10 Gilbert, R., Kelly, M. G., Mikawa, T. and Fischman, D. A. (1996) The carboxyl terminus of myosin binding protein C (MyBP-C, C-protein) specifies incorporation into the A-band of striated muscle. *J.Cell Sci.* **109**, 101-111
- 11 Gilbert, R., Cohen, J. A., Pardo, S., Basu, A. and Fischman, D. A. (1999) Identification of the A-band localization domain of myosin binding proteins C and H (MyBP-C, MyBP-H) in skeletal muscle. *J. Cell Sci.* **112 (Pt 1)**, 69-79
- 12 Obermann, W. M., Gautel, M., Weber, K. and Furst, D. O. (1997) Molecular structure of the sarcomeric M band: mapping of titin and myosin binding domains in myomesin and the identification of a potential regulatory phosphorylation site in myomesin. *Embo J.* **16**, 211-20
- 13 Houmeida, A., Holt, J., Tskhovrebova, L. and Trinick, J. (1995) Studies of the interaction between titin and myosin. *J Cell Biol* **131**, 1471-81
- 14 Richard, P., Charron, P., Carrier, L., Ledeuil, C., Cheav, T., Pichereau, C., Benaiche, A., Isnard, R., Dubourg, O., Burban, M., Gueffet, J. P., Millaire, A., Desnos, M., Schwartz, K., Hainque, B. and Komajda, M. (2003) Hypertrophic cardiomyopathy: distribution of disease genes, spectrum of mutations, and implications for a molecular diagnosis strategy. *Circulation* **107**, 2227-32
- 15 Van Driest, S. L., Vasile, V. C., Ommen, S. R., Will, M. L., Tajik, A. J., Gersh, B. J. and Ackerman, M. J. (2004) Myosin binding protein C mutations

- and compound heterozygosity in hypertrophic cardiomyopathy. *J. Am. Coll. Cardiol.* **44**, 1903-10
- 16 Lowey, S. (2002) Functional consequences of mutations in the Myosin heavy chain at sites implicated in familial hypertrophic cardiomyopathy. *Trends Cardiovasc. Med.* **12**, 348-54
- 17 Blair, E., Redwood, C., de Jesus Oliveira, M., Moolman-Smook, J. C., Brink, P., Corfield, V. A., Ostman-Smith, I. and Watkins, H. (2002) Mutations of the light meromyosin domain of the beta-myosin heavy chain rod in hypertrophic cardiomyopathy. *Circ. Res.* **90**, 263-9
- 18 Way, M., Pope, B., Gooch, J., Hawkins, M. and Weeds, A. G. (1990) Identification of a region in segment 1 of gelsolin critical for actin binding. *Embo J.* **9**, 4103-9
- 19 Studier, F. W., Rosenberg, A. H., Dunn, J. J. and Dubendorff, J. W. (1990) Use of T7 RNA polymerase to direct the expression of cloned genes. *Methods Enzymol.* **185**, 60-89
- 20 Atkinson, S. J. and Stewart, M. (1991) Expression in *Escherichia Coli* of fragments of the coiled-coil rod domain of rabbit myosin: influence of different regions of the molecule on aggregation and paracrystal formation. *J. Cell Sci.* **99**, 823-836
- 21 Sohn, R. L., Vikstrom, K. L., Strauss, M., Cohen, C., Szent-Gyorgyi, A. G. and Leinwand, L. A. (1997) A 29 Residue Region of the Sarcomeric Myosin Rod is Necessary for Filament Formation. *J. Mol. Biol.* **266**, 317-330
- 22 Miyamoto, C. A., Fischman, D. A. and Reinach, F. C. (1999) The interface between MyBP-C and myosin: site-directed mutagenesis of the CX myosin-binding domain of MyBP-C. *J. Muscle Res. Cell Motil.* **20**, 703-15
- 23 Van Driest, S. L., Jaeger, M. A., Ommen, S. R., Will, M. L., Gersh, B. J., Tajik, A. J. and Ackerman, M. J. (2004) Comprehensive analysis of the beta-myosin heavy chain gene in 389 unrelated patients with hypertrophic cardiomyopathy. *J. Am. Coll. Cardiol.* **44**, 602-10
- 24 Perrot, A., Schmidt-Traub, H., Hoffmann, B., Prager, M., Bit-Avragim, N., Rudenko, R. I., Usupbaeva, D. A., Kabaeva, Z., Imanov, B., Mirrakhimov, M. M., Dietz, R., Wycisk, A., Tenders, M., Gessner, R. and Osterziel, K. J. (2005) Prevalence of cardiac beta-myosin heavy chain gene mutations in patients with hypertrophic cardiomyopathy. *J. Mol. Med.* **83**, 468-77
- 25 Hougs, L., Havndrup, O., Bundgaard, H., Kober, L., Vuust, J., Larsen, L. A., Christiansen, M. and Andersen, P. S. (2005) One third of Danish hypertrophic cardiomyopathy patients with MYH7 mutations have mutations [corrected] in MYH7 rod region. *Eur. J. Hum. Genet.* **13**, 161-5
- 26 Villard, E., Duboscq-Bidot, L., Charron, P., Benaiche, A., Conraads, V., Sylvius, N. and Komajda, M. (2005) Mutation screening in dilated cardiomyopathy: prominent role of the beta myosin heavy chain gene. *Eur. Heart J.* **26**, 794-803
- 27 Karkkainen, S., Helio, T., Jaaskelainen, P., Miettinen, R., Tuomainen, P., Ylitalo, K., Kaartinen, M., Reissell, E., Toivonen, L., Nieminen, M. S., Kuusisto, J., Laakso, M. and Peuhkurinen, K. (2004) Two novel mutations in the beta-myosin heavy chain gene associated with dilated cardiomyopathy. *Eur. J. Heart Fail.* **6**, 861-8
- 28 Squire, J. M. and Morris, E. P. (1998) A new look at thin filament regulation in vertebrate skeletal muscle. *Faseb J.* **12**, 761-71

- 29 Labeit, S., Gautel, M., Lakey, A. and Trinick, J. (1992) Towards a molecular understanding of titin. *Embo J.* **11**, 1711-6
- 30 Labeit, S. and Kolmerer, B. (1995) Titins: giant proteins in charge of muscle ultrastructure and elasticity. *Science* **270**, 293-6
- 31 Freiburg, A. and Gautel, M. (1996) A molecular map of the interactions between titin and myosin-binding protein C. Implications for sarcomeric assembly in familial hypertrophic cardiomyopathy. *Eur.J.Biochem.* **235**, 317-323

Figure Legends

Figure 1.

A The interaction of purified wild type LMM and C10.

Sedimentation experiments were carried out using 6 μ M wild type LMM and 6 μ M C10. Aliquots of the mixtures prior to centrifugation (total, T) and of the pellets (P) and supernatants (S) after centrifugation were analysed by SDS-PAGE and the gels stained with Coomassie Blue. The control data demonstrate that under the standard conditions used, LMM completely sediments and the C10 fragment in the absence of LMM remains soluble. Also shown is molecular weight marker (M).

B Measurement of the salt dependence of solubility of wild type and HCM mutant LMM.

6 μ M LMM (either wild type (1) or the Ala1379Thr (2) or Ser1776Gly (3) mutants; purified proteins shown in inset) were sedimented under standard conditions in the presence of between 100 to 300mM KCl. The amount remaining in the supernatant after centrifugation was determined by SDS-PAGE and scanning densitometry and plotted as a function of KCl concentration. Each LMM had a similar solubility profile with midpoint c. 175mM KCl.

C The quantitation of the interaction of C10 and LMM.

Cosedimentation experiments were carried out using 4 μ M LMM (either wild type or the Ala1379Thr or Ser1776Gly mutants) and 0-12 μ M C10. Aliquots of the mixtures prior to centrifugation and of the pellets and supernatants after centrifugation were analysed by SDS-PAGE and the gels stained with Coomassie Blue. The concentrations of bound and free C10 were calculated by scanning densitometry of the stained gels. The data for each LMM fragment were fitted to the equation

$\text{bound} = \frac{B_{\text{max}} * \text{free}}{K_d + \text{free}}$ using Kaleidagraph (Synergy Software); the fitted curve for the wild type data is shown.

Figure 2.

A, Cartoon showing full length LMM, LMM2-4, LMM3-4 and LMM4

The recombinant full length LMM fragment extends from residues 1185 to 1935 of human β MyHC. The heptad repeat is broken at 4 places by the presence of single additional acids (so-called “skip residues”) and these are indicated by asterisks. The sequence can be further subdivided based on charge distribution into 28 amino acid repeats [4] as indicated. LMM2-4=residues 1385-1935; LMM3-4=1582-1935; LMM4=1807-1935.

B, Cosedimentation of C10 with full length LMM, LMM2-4, LMM3-4 and LMM4

All proteins were at 6 μ M and cosedimentation took place in myosin binding buffer at 250,000g, 4°C for 10 minutes. 1, LMM + C10; 2, LMM 2-4 + C10; 3, LMM 3-4 + C10; 4, LMM 4 + C10. T = total, pre-centrifugation; S = supernatant, post-centrifugation; P = pellet, post-centrifugation.

Figure 3.

A, Cartoon showing LMM2.5-4, LMM2.6-4, LMM2.7-4 and LMM3

Further N-terminal deletions of LMM were designed by successive deletion of 28 amino repeats between the second and third skip residues. LMM2.5-4=residues 1498-1935; LMM2.6-4=1526-1935; LMM2.7-4=1554-1935; LMM3=1582-1935.

B, Cosedimentation of C10 with LMM2.5-4, LMM2.6-4, LMM2.7-4 and LMM3

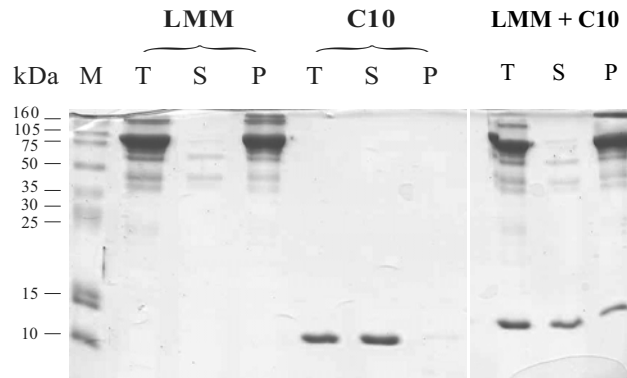
All proteins were at 6 μ M and cosedimentation took place in myosin binding buffer at 250,000g, 4°C for 10 minutes. 1, LMM 2.5-4 + C10; 2, LMM 2.6-4 + C10; 3, LMM 2.7-4 + C10; 4, LMM 3-4 + C10. T = total, pre-centrifugation; S = supernatant, post-centrifugation; P = pellet, post-centrifugation.

Figure 4

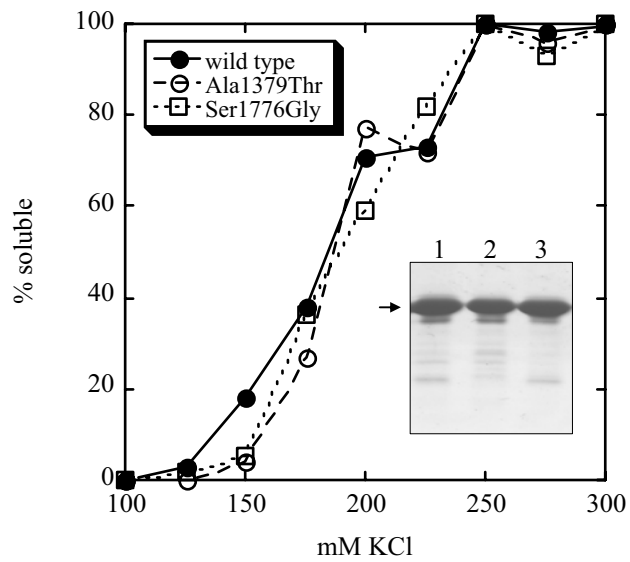
Alignment of the C10 binding sequence in a range of species and muscle myosin heavy chain isoforms.

Residues identical to the human β MyHC sequence (residues 1554-1582) are boxed. The residues mutated in this study are indicated above the sequence: + indicates Glu1554 and Glu1555; † amino acids Glu1571 and Glu1573; \diamond Glu1578, Asp1580, Glu1581 and Glu1582.

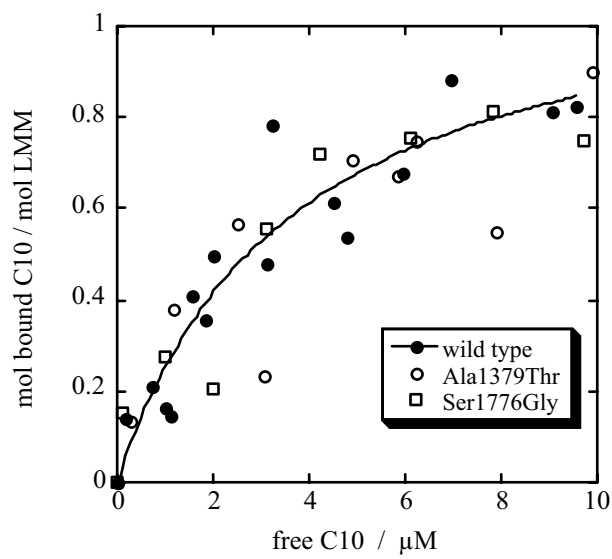
A

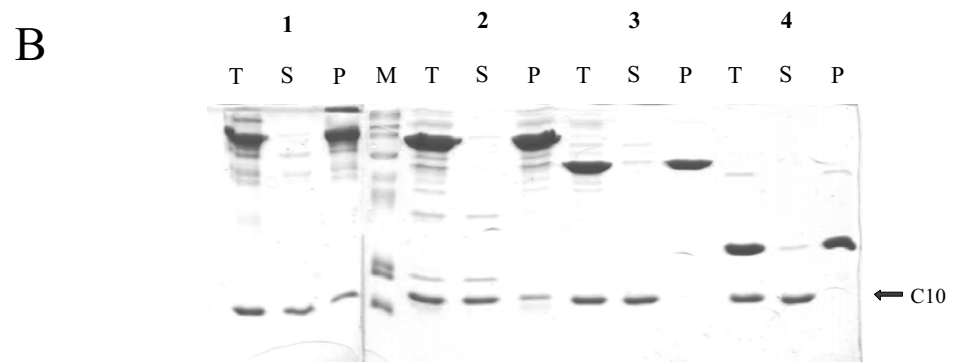


B

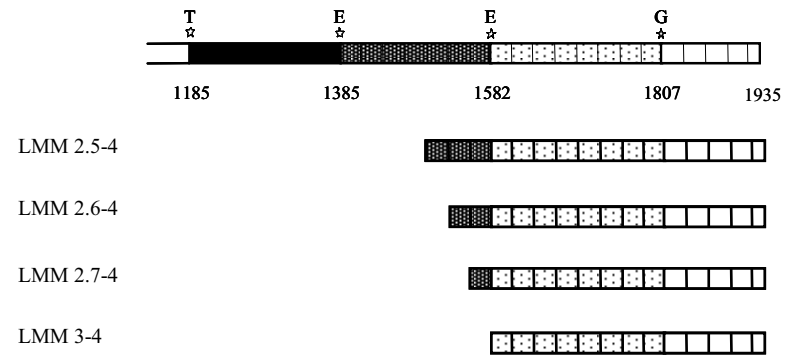


C

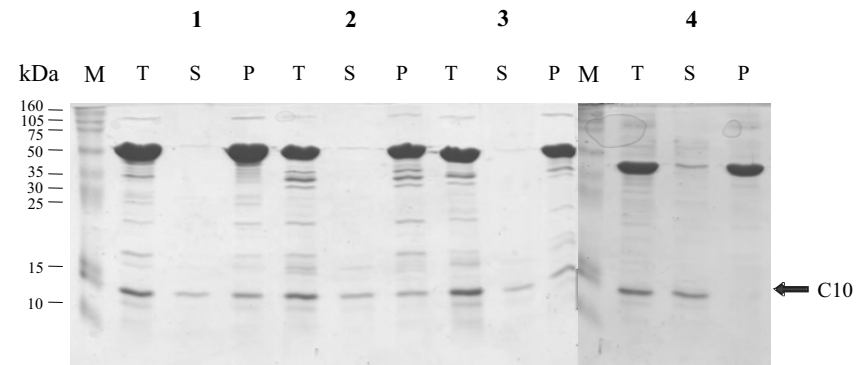




A



B



	++		† †	◇ ◇◇ ◇	
	<i>defgabc</i>	<i>defgabc</i>	<i>defgabc</i>	<i>defgabc</i>	<i>skip</i>
human β (1554–1582)	EEGKILR	AQLEFNQ	IKAEIER	KLAEKDE	E
mouse α	EEGKILR	AQLEFNQ	IKAEIER	KLAEKDE	E
pig β	EEGKILR	AQLEFNQ	IKAE M ER	KLAEKDE	E
rabbit β	EEGKILR	I Q LE L NQ	V K SE I DR	K I AEKDE	E
rat β	EEGKILR	AQLEFNQ	IKAEIER	KLAEKDE	E
Drosophila	E E N K VLR	AQLE L SQ	V R Q E IDR	R I Q E K E E	E
<i>C.elegans</i> unc54	E E S K VLR	AQ V E V SQ	I R S E I E K	R I Q E K E E	E
human non-muscle	T E D A KLR	LE V N M QA	M K A Q F E R	D L Q T R D E	Q
human <i>MYH9</i>	T E D A KLR	LE V N L QA	M K A Q F E R	D L Q G R D E	Q
human smooth	T E D A KLR	LE V N M QA	L K G Q F E R	D L Q A R D E	Q