



**HAL**  
open science

## Mitochondria maintain maturation and secretion of lipoprotein lipase in the endoplasmic reticulum

Karin Osibow, Sasa Frank, Roland Malli, Rudolf Zechner, Wolfgang F Graier

► **To cite this version:**

Karin Osibow, Sasa Frank, Roland Malli, Rudolf Zechner, Wolfgang F Graier. Mitochondria maintain maturation and secretion of lipoprotein lipase in the endoplasmic reticulum. *Biochemical Journal*, 2006, 396 (1), pp.173-182. 10.1042/BJ20060099 . hal-00478516

**HAL Id: hal-00478516**

**<https://hal.science/hal-00478516>**

Submitted on 30 Apr 2010

**HAL** is a multi-disciplinary open access archive for the deposit and dissemination of scientific research documents, whether they are published or not. The documents may come from teaching and research institutions in France or abroad, or from public or private research centers.

L'archive ouverte pluridisciplinaire **HAL**, est destinée au dépôt et à la diffusion de documents scientifiques de niveau recherche, publiés ou non, émanant des établissements d'enseignement et de recherche français ou étrangers, des laboratoires publics ou privés.

## **Mitochondria maintain maturation and secretion of lipoprotein lipase in the endoplasmic reticulum**

Karin Osibow\*, Sasa Frank\*, Roland Malli\*, Rudolf Zechner<sup>†</sup> and Wolfgang F. Graier\*

\*Institute of Molecular Biology and Biochemistry, Center of Molecular Medicine, Medical University Graz, Harrachgasse 21/III, 8010 Graz, Austria, and the <sup>†</sup>Institute of Molecular Biosciences, Karl-Franzens University Graz, Heinrichstrasse 31a, 8010 Graz, Austria

Running title: Mitochondria maintain LPL maturation

Keywords: Ca<sup>2+</sup>-dependent protein folding, endoplasmic reticulum, intraluminal Ca<sup>2+</sup>, lipoprotein lipase, mitochondria

Address correspondence to: Wolfgang F. Graier, Dr.  
Molecular and Cellular Physiology Research Unit  
Institute of Molecular Biology and Biochemistry  
Center of Molecular Medicine  
Medical University Graz  
Harrachgasse 21/III,  
A-8010 Graz  
Austria  
Tel. +43-316-380-7560  
Fax. +43-316-380-9615  
E-mail: [wolfgang.graier@meduni-graz.at](mailto:wolfgang.graier@meduni-graz.at)

**SYNOPSIS**

Considering the physiological  $\text{Ca}^{2+}$  dynamics within the endoplasmic reticulum (ER), it remains unclear how efficient protein folding is maintained in living cells. Thus, utilizing the strictly folding dependent activity and secretion of lipoprotein lipase (LPL), we evaluated the impact of ER  $\text{Ca}^{2+}$  content and mitochondrial contribution to  $\text{Ca}^{2+}$ -dependent protein folding. Exhaustive ER  $\text{Ca}^{2+}$  depletion by inhibition of sarco/endoplasmic reticulum  $\text{Ca}^{2+}$  ATPases caused strong but reversible reduction of cell associated and released activity of constitutive and adenovirus encoded human LPL in CHO-K1 and endothelial cells, respectively, which was not due to decline of mRNA or intracellular protein levels. In contrast, stimulation with the  $\text{IP}_3$ -generating agonist histamine only moderately and transiently affected LPL maturation in endothelial cells that paralleled a basically preserved ER  $\text{Ca}^{2+}$  content. However, in the absence of extracellular  $\text{Ca}^{2+}$  or upon prevention of transmitochondrial  $\text{Ca}^{2+}$  flux, LPL maturation discontinued upon histamine stimulation. Collectively, these data indicate that  $\text{Ca}^{2+}$ -dependent protein folding in the ER is predominantly controlled by intraluminal  $\text{Ca}^{2+}$  and largely maintained during physiological cell stimulation due to efficient ER  $\text{Ca}^{2+}$  refilling. Since  $\text{Ca}^{2+}$  entry and mitochondrial  $\text{Ca}^{2+}$  homeostasis are crucial for continuous  $\text{Ca}^{2+}$ -dependent protein maturation in the ER, their pathological alterations may result in dysfunctional protein folding.

## INTRODUCTION

The endoplasmic reticulum (ER) constitutes the main releasable  $\text{Ca}^{2+}$  store in most cell types and actively contributes to cellular  $\text{Ca}^{2+}$  homeostasis via the release and re-uptake of  $\text{Ca}^{2+}$  in the course of precisely controlled signaling cascades [1] and extensive communication with mitochondria and adjacent ion channels of the plasma membrane [2, 3].

Moreover, by its oxidizing milieu, resident molecular chaperones and folding catalysts, the lumen of the ER provides an optimized environment for the synthesis and posttranslational processing of most secretory and membrane proteins [4]. Among the most important molecular chaperones of the ER, calreticulin and its transmembrane homologue calnexin provide a highly efficient quality control system for immature glycoproteins [5].

Initially characterized as  $\text{Ca}^{2+}$ -binding protein of the sarcoplasmic reticulum [6], conformation [7], chaperone interactions [8], and thus, activity of calreticulin have been shown to be directly affected by endoplasmic reticulum free  $\text{Ca}^{2+}$  concentration ( $[\text{Ca}^{2+}]_{\text{ER}}$ ). A decrease in ambient  $[\text{Ca}^{2+}]$  renders the calreticulin cycle and associated folding catalysts, i.e. protein disulfide isomerase and ERp57, inactive [9]. However, these principles of  $\text{Ca}^{2+}$ -dependent protein folding have been assessed mainly on recombinant proteins [7, 8, 10] or artificially applying excessive ER stress [11-13] while a detailed analysis of its kinetics and correlation with physiological  $\text{Ca}^{2+}$  fluctuations are lacking. While there are reports that address this issue [14], it still remains questionable whether the ER protein folding machinery is influenced by spatial and temporal dynamics of  $[\text{Ca}^{2+}]_{\text{ER}}$  in intact cells and if so, how efficient protein folding is maintained under physiological cell stimulation. Moreover, since recent studies revealed a crucial role of mitochondria in the process of rescuing the  $\text{Ca}^{2+}$  content of the ER during stimulation with  $\text{IP}_3$ -elevating agonists [15], the importance of mitochondrial for  $\text{Ca}^{2+}$ -dependent protein maturation in the ER awaits to be assessed.

Notably, protein misfolding is considered as cause and/or consequence of numerous diseases [16, 17] including diabetes mellitus [18]. The latter is known to be associated with

mitochondrial dysfunction that becomes obvious by increased free radical production [19] and altered mitochondrial  $\text{Ca}^{2+}$  homeostasis [20]. However, since the link between mitochondrial  $\text{Ca}^{2+}$  homeostasis and ER protein folding has not been investigated so far, the consequences of pathological alterations in mitochondrial  $\text{Ca}^{2+}$  function on ER protein maturation cannot be estimated.

In order to elucidate the feasible impact of  $[\text{Ca}^{2+}]_{\text{ER}}$  dynamics and the contribution of mitochondrial  $\text{Ca}^{2+}$  homeostasis on protein folding, the expression, secretion and enzyme activity of lipoprotein lipase (LPL) as a measure for the efficiency of protein processing machinery of the ER was investigated. LPL, the major lipolytic enzyme for the hydrolysis of circulating lipoproteins, is a secretory N-linked glycoprotein, which contains two conserved disulfide bridges, and that interacts with the  $\text{Ca}^{2+}$ -dependent protein folding machinery of the ER during its maturation [11, 13, 21]. As only the correctly folded protein is active and secreted [11, 21], LPL activity is dependent on proper maturation in the ER and, therefore, it was assumed to be a suitable sensor for ER chaperone-dependent folding processes.

## **MATERIALS AND METHODS**

### **Materials**

Cell culture media and substitutes, specific primers, DNA standards, Moloney murine leukaemia virus reverse transcriptase and first strand buffer were obtained from Invitrogen Life Technologies (Vienna, Austria). Fetal calf serum was from PAA (Linz, Austria). Cell culture plastic ware was purchased from Bertoni (Vienna, Austria). The RNeasy Mini kit was from Quiagen (VWR, Vienna, Austria). RQ1 RNase free DNase I and TransFast<sup>TM</sup> were obtained from Promega (Mannheim, Germany). <sup>3</sup>H-labeled and non-radioactive triolein, BHQ, histamine and BSA fraction V were from Sigma-Aldrich (Vienna, Austria). Fura-2/AM was from Molecular Probes Europe (Leiden, Netherlands). RNAGuard and random hexameric

primers were purchased from Amersham Biosciences (Freiburg, Germany). CGP 37157 was purchased from Tocris Cookson Ltd. (Northpoint, Avonmouth, Bristol, UK). Heparin was from Boehringer (Ingelheim, Germany). Hot Fire DNA Polymerase I was from Solis BioDyne (Tartu, Estonia). Luminol reagent was obtained from Santa Cruz (Szabo Scandic, Vienna Austria) and Ultima Gold scintillation cocktail was from Packard Biosciences (PerkinElmer, Vienna, Austria). X-ray films were from Siemens (Graz, Austria). Nitrocellulose, protein standards, dNTPs and all other chemicals were purchased from Roth (Lactan, Graz, Austria).

### **Cell culture and adenovirus infection**

Chinese hamster ovary (CHO-K1) cells were cultured on 6 well dishes in Ham's F12 containing 10 % FCS. Upon reaching confluence, cells were incubated with 1 % BSA in serum-free Dulbecco's minimum essential medium for 24 h prior to experiment. The human umbilical vein derived endothelial cell line EA.hy926 [22] at passages higher than 44 was grown on 6 well dishes in culture medium containing 10 % fetal calf serum and 1 % HAT (5 mM hypoxanthine, 20  $\mu$ M aminopterin, 0.8 mM thymidine). Subconfluent cells were infected with 100 MOI of adenovirus encoding human LPL [23] in culture medium containing 2 % fetal calf serum which was replaced for regular medium after app. 12 h.

### **Reverse Transcriptase-Polymerase Chain Reaction**

RT-PCR was performed as described previously [24]. Amplification was carried out with initial denaturation at 95 °C for 10 minutes followed by 40 cycles of denaturation at 95 °C and annealing at 55 °C for 30 seconds each and elongation at 72 °C for 60 seconds. The specific primers used for human LPL were 5'-GCA TTG CAG GAA GTC TGA CC-3' and 5'-GAT GTT CTC ACT CTC GGC CA-3' yielding a 632 bp product. As control a 537 bp fragment of glyceraldehyde-3-phosphate dehydrogenase was amplified using the primers 5'-

ACC ACA GTC CAT GCC ATC AC-3' and 5'-TCC ACC ACC CTG TTG CTG TA-3'.

PCR products were separated on 2 % TAE-agarose gels.

### Western Blot analysis

Western blots were carried out according to our recent protocol [25]. Briefly, 50  $\mu$ g total protein or 200  $\mu$ l vacuum-concentrated supernatant were mixed with sample buffer yielding a final concentration of 4 % glycerol (v/v) 1 % SDS (w/v), 0.03 % bromophenol blue (w/v), 0.6 % 2-mercaptoethanol (v/v) in 12.6 mM Tris-HCl, pH adjusted to 6.8, and boiled at 95 °C for 10 minutes prior to separation on 12.5 % SDS-polyacrylamide gels. After electrotransfer of the proteins onto nitrocellulose membranes, unspecific binding sites were blocked by 5 % (w/v) non fat instant milk in PBS and the membranes probed at 4 °C overnight with rabbit polyclonal antibody against recombinant human LPL diluted 1:1000 in 5 % milk powder in PBS containing (in mM) 137 NaCl, 2.7 KCl, 8 Na<sub>2</sub>HPO<sub>4</sub> x 2 H<sub>2</sub>O, 1.5 KH<sub>2</sub>PO<sub>4</sub>; pH adjusted to 7.4. Subsequently, membranes were washed with PBS containing 0.05 % Tween-20 (v/v), incubated for 1 hour with horseradish-peroxidase conjugated secondary antibody and detected by enhanced chemiluminescence after additional washing steps.

### Determination of LPL enzyme activity

Following incubation with the respective substances in culture medium containing 0.5  $\mu$ g/ml heparin, supernatants were collected on ice and the cells lysed by sonification in chilled 50 mM NH<sub>3</sub>/NH<sub>4</sub>Cl solution (pH 8.1). Protein concentration of cell lysates was determined according to the established method of Lowry [26]. LPL activity was determined by the hydrolysis of <sup>3</sup>H-labeled triglycerides as described previously [27]. 1  $\mu$ Ci <sup>3</sup>H-triolein and 920  $\mu$ g non-radioactive triolein per sample were evaporated under a stream of nitrogen and mixed with 20  $\mu$ l 1 M Tris-HCl, pH adjusted to 8.6, 20  $\mu$ l 1% Triton X-100 and 80  $\mu$ l H<sub>2</sub>O by extensive sonication on ice-cooled water. Following addition of 40  $\mu$ l heat-inactivated (50°C,

1 h) human serum containing apoCII as activator and 40  $\mu$ l 10% BSA, 100  $\mu$ l of cell lysates or supernatant were mixed with 200  $\mu$ l of the resultant chilled substrate and incubated for 30 min at 37 °C under continuous shaking. The reaction was stopped by 3.25 ml of a organic solvent mixture consisting of methanol : chloroform : n-heptane (1.41:1.25:1, v/v/v). By addition of 1 ml 0.1 M  $K_2CO_3/H_3BO_3$ , pH adjusted to 10.5, free fatty acids became extractable from a two phase system by vigorous shaking for 20 s and subsequent centrifugation at 3000 rpm for 20 min. 1 ml of the upper phase was mixed with 8 ml Ultima Gold scintillation cocktail and measured in a  $\beta$ -counter (Beckmann, Munich, Germany). LPL activity was expressed as amount of free fatty acids, hydrolysed per minute by lipolytic enzyme contained within or in the supernatant of 1 mg of total cellular protein as described previously [27]. This assay was not directly affect by BHQ, histamine or CGP 37187.

#### **Determination of cytosolic free $Ca^{2+}$ concentration ( $[Ca^{2+}]_{cyto}$ )**

Cytosolic free  $Ca^{2+}$  concentration was measured as previously described [28]. Briefly, endothelial cells grown on glass cover slips or culture dishes of 3 cm diameter were loaded for 45 min at room temperature in the dark in LB containing 2  $\mu$ M fura-2/AM. Prior experiments, cells were washed twice with LB and equilibrated for further 15 min in EB in the dark. Cells were illuminated alternatively at 340 and 380 nm (340HT15 and 380HT15; Omega Optical, Brattleboro, VT, USA) and emission was monitored at 510 nm (510WB40; Omega Optical).  $[Ca^{2+}]_{cyto}$  was expressed as  $(F_{340}/F_{380})/F_0$ .

#### **Measurement of $[Ca^{2+}]_{ER}$**

Intraluminal free  $Ca^{2+}$  concentration was monitored as described previously [3, 29]. In brief, at a confluency of app. 80%, endothelial cells grown on glass cover slips were transiently transfected with 2  $\mu$ g of purified pcDNA3 encoding the improved versions of ER-targeted  $D1_{ER}$  [30] using TransFast<sup>TM</sup> Transfection Reagent according to the manufacturer's protocol.



Between 36 and 48 h after transfection, cells were used for experiment.  $D1_{ER}$  was excited at 440 nm (440AF21, Omega Optical) and emission was collected simultaneously at 535 and 480 nm using an optical beam splitter (Dual-View MicroImager<sup>TM</sup>, Optical Insights, Visitron Systems, Puchheim, Germany). Changes of  $[Ca^{2+}]_{ER}$  were expressed as  $(F_{535}/F_{480})/F_0$ . Each data point represents the mean  $\pm$  SEM of 3 to 4 cells over a measurement period of 3 min.

### Statistics

Data represent the mean  $\pm$  SEM. Error bars are shown for every data point presented. If no bar is visible, the S.E.M. was smaller than the symbol size. Analysis of variance (ANOVA) and Scheffé's *post hoc* F test were used for evaluation of the statistical significance.  $P < 0.05$  was defined to be significant.

## RESULTS

To elucidate the general mechanisms of the regulation of LPL maturation by ER  $Ca^{2+}$  content, we initially investigated the maturation and secretion of constitutive LPL in CHO-K1 cells [31] under control conditions and upon exhaustive  $Ca^{2+}$  depletion of the ER.

### **Inhibition of sarco/endoplasmic reticulum $Ca^{2+}$ ATPase (SERCA) yielded efficient $Ca^{2+}$ depletion of the ER**

As a consequence of an inhibition of SERCA with 2,5-di-(tert-butyl)-1,4-hydroquinone (BHQ; 15  $\mu$ M), ER  $Ca^{2+}$  content exhaustively decreased long lastingly (Fig.1A) [3, 15] despite continuous presence of extracellular  $Ca^{2+}$ . This effect was fully reversible upon removal of BHQ. Concomitantly,  $[Ca^{2+}]_{cyto}$  increased and remained elevated as long as BHQ was present (Fig.1B).

### **SERCA inhibition attenuated activity and secretion, but not expression of endogenous LPL**

To induce endogenous expression of LPL, CHO-K1 cells were propagated in serum free medium for 24 h prior experiment.  $\text{Ca}^{2+}$  depletion of the ER with 15  $\mu\text{M}$  BHQ resulted in gradual decline of LPL activity in cell lysates (Fig.1C). Subsequent removal of BHQ yielded complete recovery of enzyme activity within 1 h (Fig.1C). LPL activity released into the supernatant of CHO-K1 cells rose constantly (Fig.1D). Application of 15  $\mu\text{M}$  BHQ retained extracellular LPL activity at low level, while immediately after washout of BHQ, the secretion of active LPL increased with identical kinetics as in control (slope:  $3.0 \pm 0.7$  with vs.  $3.0 \pm 0.2$  (nmol/mg x min) x  $\text{h}^{-1}$  without BHQ pre-treatment) (Fig.1D). By RT-PCR, the mRNA levels of LPL and glyceraldehyde 3-phosphate dehydrogenase (GAPDH) were found to be unaffected by 3 h treatment with BHQ (Fig.1E).

These data suggest, that endogenous transcription of LPL in wild-type CHO cells is not altered by depletion of  $[\text{Ca}^{2+}]_{\text{ER}}$ , whereas its enzymatic activity and secretion are reversibly reduced.

Due to the lack of a suitable antibody against LPL of hamster origin, possible alterations on the protein level could not be verified. Consequently, in order to correlate ER  $\text{Ca}^{2+}$  content further with protein transcription, expression as well as maturation and secretion, human LPL was over-expressed in endothelial cells utilizing adenovirus [23].

### **Depletion of $[\text{Ca}^{2+}]_{\text{ER}}$ attenuated activity and secretion of adenovirus-encoded LPL**

In endothelial cells, adenovirus-mediated expression of human LPL yielded a steady enzyme activity in cell lysates and continuous LPL secretion into the medium (Fig.2). In the presence of 15  $\mu\text{M}$  BHQ, which achieved exhaustive ER  $\text{Ca}^{2+}$  depletion similar to that shown in CHO-

K1 cells [3], LPL activity in cell lysates decreased and partially recovered upon removal of BHQ (Fig.2A).

In agreement with the results obtained on the constitutive LPL in CHO-K1 cells, activity of adenovirus-coded human LPL increased gradually in the medium of untreated endothelial cells with a slope of  $6.3 \pm 0.7$  (nmol/mg x min) x h<sup>-1</sup> in the first 3 h. Addition of 15  $\mu$ M BHQ arrested the enzyme activity at low level. In consequence of BHQ washout, in the first 3 h LPL activity in the supernatant started to rise with a slope comparable to that initially seen in untreated cells ( $6.8 \pm 1.2$  (nmol/mg x min) x h<sup>-1</sup>) (Fig.2B).

#### **Adenovirus-mediated expression of LPL was unaffected by depletion of [Ca<sup>2+</sup>]<sub>ER</sub>**

As shown in figure 3A, mRNA levels of human LPL in relation to GAPDH remained unchanged in endothelial cells by up to 4 h of BHQ treatment and during the subsequent washout period. Moreover, the content of LPL protein within equal amounts of cell lysate was unaffected by BHQ (Fig.3B, upper panel). However, the additional band of lower molecular weight that was detectable with the antibody increased slightly within the first hour after BHQ application and disappeared during the washout period. In the supernatant of adenovirus-infected endothelial cells, LPL protein content paralleled the raise in enzymatic activity found in the medium. Consecutively, BHQ abolished LPL secretion and LPL protein in the medium did not reach a detectable level up to 3 h after removal of the SERCA inhibitor (Fig.3B, middle panel). In comparison, the expression level of  $\alpha$ -actin remained unaffected under each condition (Fig3B, lower panel).

These data indicate, that strong depletion of the ER by BHQ diminished the activity and secretion of adenovirus-encoded human LPL in endothelial cells in a partially reversible manner, while mRNA levels and intracellular protein content remained unaffected by BHQ treatment.

## **Histamine caused moderate ER Ca<sup>2+</sup> depletion despite strong elevation of cytoplasmic Ca<sup>2+</sup>**

In order to analyse the impact of agonist-triggered ER Ca<sup>2+</sup> depletion on LPL maturation and secretion, the effects of the IP<sub>3</sub>-generating autacoid histamine on [Ca<sup>2+</sup>]<sub>ER</sub> and the activity of adenovirus-encoded human LPL were investigated in endothelial cells.

Stimulation of endothelial cells expressing LPL with 100 μM histamine in the presence of extracellular Ca<sup>2+</sup> resulted in immediate and reversible reduction of [Ca<sup>2+</sup>]<sub>ER</sub> (Fig.4A). This effect was comparable with that achieved with BHQ but represented an transient phenomenon as ER Ca<sup>2+</sup> content fully recovered within 1h even in the presence of the agonist. This histamine-initiated ER Ca<sup>2+</sup> depletion was accompanied by a rapid initial cytosolic Ca<sup>2+</sup> elevation and a subsequent elevated Ca<sup>2+</sup> plateau until washout of the agonist (Fig.4B).

## **Agonist-induced ER Ca<sup>2+</sup> lowering transiently attenuated activity and secretion of human LPL**

Upon application of 100 μM histamine, intracellular LPL activity was reduced after 1 h and subsequently reestablished slowly to reach complete recovery after 4 h despite the presence of the agonist (Fig.4C). In the supernatant histamine reduced LPL activity in the medium for 2 h while further progression of LPL secretion was only slightly diminished (Fig.4D).

However, in the absence of extracellular Ca<sup>2+</sup> (i.e. EGTA-containing solution), histamine (100 μM) yielded complete ER Ca<sup>2+</sup> depletion (Fig.4A) that was accompanied by a transient cytosolic Ca<sup>2+</sup> elevation (Fig.4B). Under these conditions, intracellular LPL activity upon histamine did not recover and continuously decreased over time (Fig.4C). Consistently, in the absence of extracellular Ca<sup>2+</sup>, secretion of LPL was permanently prevented by stimulation with histamine (Fig.4D). In agreement with our findings that point to a tight correlation between ER Ca<sup>2+</sup> content and LPL folding, EGTA *per se* (i.e. without histamine

stimulation), which has been previously shown to result in a slowly ER depletion [32] and yielded app. 50% ER depletion within 4h (data not shown) gradually diminished intracellular activity and secretion of LPL over time (Fig. 6A & B).

Thus, in contrast to BHQ that yielded exhaustive and long lasting ER  $\text{Ca}^{2+}$  depletion and, consequently, prevented posttranslational processing of LPL, cell stimulation with an  $\text{IP}_3$ -generating agonist under physiological conditions (i.e. in the presence of extracellular  $\text{Ca}^{2+}$ ) only weakly and transiently (within 4h) attenuated the maturation and secretion of LPL, most likely due to the moderate ER  $\text{Ca}^{2+}$  depletion under these conditions.

To investigate the contribution of mitochondrial  $\text{Ca}^{2+}$  flux to the maintenance of the  $\text{Ca}^{2+}$ -dependent protein folding machinery of the ER during cell stimulation with the physiologically relevant agonist histamine, mitochondrial  $\text{Ca}^{2+}$  extrusion was prevented by CGP 37157, an inhibitor of mitochondrial  $\text{Na}^+/\text{Ca}^{2+}$  exchanger, that represents the main mechanism of  $\text{Ca}^{2+}$  extrusion from mitochondria in endothelial cells [3, 33].

### **Inhibition of mitochondrial $\text{Ca}^{2+}$ flux prevented LPL maturation and secretion**

CGP 37157 was recently demonstrated to inhibit mitochondrial  $\text{Ca}^{2+}$  flux and, thus, ER  $\text{Ca}^{2+}$  refilling upon stimulation in endothelial cells very efficiently [3]. As shown in figure 5A, in the presence of CGP 37157 (20  $\mu\text{M}$ ) histamine-induced ER  $\text{Ca}^{2+}$  depletion was more pronounced than in control while cytosolic free  $\text{Ca}^{2+}$  remained elevated (Fig.5B).

In the presence of CGP 37157, cytosolic LPL activity was largely decreased by stimulation with histamine and did not recover with time (Fig.5C). Accordingly, LPL secretion was prevented upon histamine stimulation in the presence of CGP 37157 (Fig.5D). In contrast, application of CGP 37157 without any further treatment did not affect ER  $\text{Ca}^{2+}$  content within 4h (data not shown) and also had no effect on intracellular or secreted LPL activity (Fig.6A & B).

These data suggest, that besides extracellular  $\text{Ca}^{2+}$ , mitochondrial  $\text{Ca}^{2+}$  transfer essentially contributes to  $\text{Ca}^{2+}$ -dependent maturation of LPL in the ER and its subsequent secretion during cell stimulation with an  $\text{IP}_3$ -generating agonist.

## DISCUSSION

In virtually all non-excitabile cells, the ER serves as main releasable  $\text{Ca}^{2+}$  store and actively contributes to cellular  $\text{Ca}^{2+}$  homeostasis and posttranslational protein processing [1]. Notably, the activity of some of the most important ER-resident chaperones, such as calreticulin, calnexin and BiP, was recognized to be sensitive to ambient  $\text{Ca}^{2+}$  [9]. However, it remains still unclear whether and, if so, how eminent  $\text{Ca}^{2+}$  fluctuations faced by the ER under physiological conditions due to regular cell stimulation [2, 3, 15] influence ER chaperone activity [8]. Additionally, since mitochondria are of pivotal importance to direct entering  $\text{Ca}^{2+}$  towards the ER for its refilling [15], the contribution of such mitochondrial  $\text{Ca}^{2+}$  transfer to  $\text{Ca}^{2+}$ -dependent protein maturation in the ER urges to be elucidated. Therefore, the efficiency of  $\text{Ca}^{2+}$ -dependent protein maturation in the ER was determined utilizing LPL, the activity and secretion of which strictly depends on proper folding by  $\text{Ca}^{2+}$ -sensitive chaperons and folding catalysts in the ER [11, 13, 21]. Consequently, LPL expression was correlated with enzyme activity as a measure of correctly folded LPL.

Initially, the activity of endogenous LPL in serum-starved CHO-K1 cells [31] was assessed. Under resting conditions, intracellular LPL activity remained constant over the whole experiment, while in the supernatant a linear accumulation of LPL activity occurred. These findings are in agreement with the general concept of a continuous LPL synthesis, maturation and its subsequent secretion [31]. However, if the ER was exhaustively depleted from  $\text{Ca}^{2+}$  by the SERCA inhibitor BHQ [3], intracellular LPL activity disappeared and fully recovered 1 h

after BHQ washout. The decline of cellular LPL activity due to BHQ was associated with retention of LPL secretion that was completely restored 2 h after BHQ removal. Since the changes in LPL activity and secretion were not accompanied by alterations in the mRNA level, these data suggest that ER  $\text{Ca}^{2+}$  depletion prevents protein maturation and, thus, its subsequent secretion.

However, at this point it was conceivable that ER  $\text{Ca}^{2+}$  depletion harms protein translation resulting in attenuation of active LPL protein despite unchanged mRNA levels. Unfortunately, potential effects of a reduction of ER  $\text{Ca}^{2+}$  content on LPL protein levels could not be verified due to the lack of a suitable antibody against hamster LPL. In order to provide information on the protein content for the correlation of LPL expression/maturation/secretion with ER  $\text{Ca}^{2+}$  concentration, we used adenovirus-mediated over-expression of human LPL [23], against which a polyclonal antibody was available. Furthermore, any modulation of the gene expression of constitutive LPL by  $\text{Ca}^{2+}$ -sensitive transcription factors could be excluded due to the stable LPL transcription driven by the virus promoter. In addition, to avoid contamination by constitutively expressed LPL, cells lacking endogenous LPL [34, 35] were infected. Accordingly, due to our extensive experience on the  $\text{Ca}^{2+}$  homeostasis in the human umbilical vein derived endothelial cell line EA.hy926 [2, 3, 15, 29, 36], these cells were chosen as a suitable model system.

In agreement with previous reports [3, 15], SERCA inhibition by BHQ efficiently emptied the ER and permanently elevated cytosolic free  $\text{Ca}^{2+}$  concentration also in endothelial cells that were infected with adenovirus-encoding human LPL (data not shown). Concurrently, activity of ectopically expressed human LPL in cell lysates decreased upon BHQ addition, which was in line with a blunted LPL accumulation in the medium. However, in contrast to the complete recovery of LPL activity in CHO-K1 cells upon BHQ washout, in infected endothelial cells LPL activity only partially recovered despite total refilling of ER  $\text{Ca}^{2+}$  stores [3, 15]. The slower onset of LPL appearance in the supernatant under these

conditions might be either related to the delay in intracellular LPL recovery after BHQ or to the change in the cell type used.

Expression of functional recombinant proteins, especially at high concentrations as achieved by viral infection, requires an efficient and undisturbed operation of the protein processing machinery of the ER [37], which can easily be overloaded [38]. Thus, it is reasonable to speculate that delay of LPL recovery following washout of BHQ is due to attenuation of LPL synthesis and/or maturation by ER stress [39]. Nevertheless, these data are in line with that obtained in CHO-K1 cells and point to a strong correlation between LPL maturation/secretion and ER  $\text{Ca}^{2+}$  content. Importantly, the effect of ER  $\text{Ca}^{2+}$  depletion on the activity of LPL was not due to alterations in mRNA levels and intracellular protein content. Albeit, there was no intracellular accumulation of LPL despite prevented secretion, pointing to mobilization of ER-associated degradation under these conditions [40]. Consistently, efficient degradation of LPL by ER-associated degradation mechanisms has been shown for maturation-defective variants of that protein in the context of inherited primary lipase deficiency [41] and *cld/cld* mice [42].

Thus, the maturation and secretion of both ectopically over-expressed and endogenous LPL proved to be sensitive to depletion of  $[\text{Ca}^{2+}]_{\text{ER}}$ .

Nevertheless, it remains still unclear whether the ER folding machinery is also susceptible to fluctuations in ER  $\text{Ca}^{2+}$  content in response to physiological stimuli. Therefore, the impact of the physiological mediator histamine on LPL maturation/secretion was elucidated in endothelial cells expressing adenovirus-encoded human LPL. Remarkably, even stimulation with supramaximal concentrations of this  $\text{IP}_3$ -generating agonist (i.e. 100  $\mu\text{M}$  histamine, [36]), was found to initiate limited ER  $\text{Ca}^{2+}$  depletion due to counteracting refilling processes as described recently [3, 15]. In line with these previous reports, the reduction of ER  $\text{Ca}^{2+}$  content as well as cytosolic  $\text{Ca}^{2+}$  elevations in response to histamine were comparable to that



achieved by BHQ. Moreover, ER  $\text{Ca}^{2+}$  content recovered within 1h even in the presence of the agonist. In agreement with such transient ER  $\text{Ca}^{2+}$  depletion and the subsequent ER  $\text{Ca}^{2+}$  refilling in the presence of histamine, secretion of adenovirus-encoded LPL was delayed after 2h histamine stimulation but recovered with the same slope as in resting cells thereafter. In contrast, the recovery of the intracellular activity of LPL in histamine stimulated cells was much slower and full recovery was found after 5h histamine stimulation. These data indicate that upon ER  $\text{Ca}^{2+}$  refilling, the recovery of intracellular LPL maturation is masked by the rapid secretion of newly folding protein. Overall, these data point to a strict dependency between LPL maturation, secretion and  $[\text{Ca}^{2+}]_{\text{ER}}$ . However, our data, that LPL maturation and secretion were prevented if the cells were stimulated with histamine in the absence of extracellular  $\text{Ca}^{2+}$  (i.e. conditions where no ER  $\text{Ca}^{2+}$  refilling occurs, [3]), suggest that for the maintenance of  $\text{Ca}^{2+}$ -dependent protein maturation in the ER requires  $\text{Ca}^{2+}$  entry to preserve ER  $\text{Ca}^{2+}$  content during physiological cell stimulation. Notably, attenuation of  $\text{Ca}^{2+}$  entry pathways has been frequently observed under pathological conditions (e.g. diabetes mellitus, [43]) and, thus, pathologically altered  $\text{Ca}^{2+}$  channel activity might contribute to protein misfolding in diseases.

Similar to the removal of extracellular  $\text{Ca}^{2+}$ , inhibition of trans-mitochondrial  $\text{Ca}^{2+}$  flux by CGP 37157 [3, 15] prevented  $\text{Ca}^{2+}$ -dependent protein maturation in the ER. These findings are in line with our previous report that mitochondrial  $\text{Ca}^{2+}$  flux is prerequisite for ER  $\text{Ca}^{2+}$  refilling during agonist stimulation and points to the maintenance of the  $\text{Ca}^{2+}$ -dependent protein folding machinery of the ER in a physiological environment as new, so far unknown function of mitochondria. In view of these findings and the increasing evidence of mitochondrial dysfunction in various metabolic diseases (e.g. diabetes mellitus, [20, 44]) it is tempting to speculate that disease-associated alterations in mitochondrial ( $\text{Ca}^{2+}$ ) function may

subsequently affect  $\text{Ca}^{2+}$ -dependent protein maturation in the ER and, thus, facilitate cellular dysfunction by incorrectly folded or incompletely assembled proteins.

In conclusion, these data suggest that the protein folding machinery of the ER is weakly affected by agonist-mediated  $[\text{Ca}^{2+}]_{\text{ER}}$  fluctuations, while displaying strong sensitivity to pronounced and/or long-lasting attenuation of  $[\text{Ca}^{2+}]_{\text{ER}}$ . Thus, under physiological conditions ER protein maturation is largely preserved regardless of cell stimulation with  $\text{IP}_3$ -generating agonists due to strong ER  $\text{Ca}^{2+}$  refilling processes that depend on  $\text{Ca}^{2+}$  entry and trans-mitochondrial flux and efficiently counteract ER  $\text{Ca}^{2+}$  depletion. Based on the strong evidences that cellular/mitochondrial  $\text{Ca}^{2+}$  homeostasis represents an early target of cell dysfunction in numerous diseases (e.g. diabetes mellitus [45-47] or atherosclerosis [48]), the impact of the reported alterations in intracellular  $\text{Ca}^{2+}$  handling on protein maturation in the ER urges to be explored in more detail.

#### ACKNOWLEDGEMENTS

We thank Dr. C.J.S. Edgell for the EA.hy926 cells and Anna Schreilechner, Michaela Tritscher and Renate Schreiber for their excellent technical assistance.  $\text{D1}_{\text{ER}}$  was a gift from Drs. A. Miyawaki and R.Y. Tsien. This work was supported by the Austrian Science Funds (SFB 714, P16860-B9 to W.F.G.; SFB 713 to R.Z.) and the Franz-Lanyar-Stiftung at the Medical University of Graz. The Department of Molecular Biology and Biochemistry is a member of the Institutes of Basic Medical Sciences (*IBMS*) at the Medical University of Graz and was supported by the infrastructure program (UGP4) of the Austrian ministry of education, science and culture.

## REFERENCES

- 1 Berridge, M. J. (2002) The endoplasmic reticulum: a multifunctional signaling organelle. *Cell Calcium* **32**, 235-249.
- 2 Malli, R., Frieden, M., Osibow, K. and Graier, W. F. (2003) Mitochondria efficiently buffer subplasmalemmal  $\text{Ca}^{2+}$  elevation during agonist stimulation. *J. Biol. Chem.* **278**, 10807-10815.
- 3 Malli, R., Frieden, M., Osibow, K., Zoratti, C., Mayer, M., Demaurex, N. and Graier, W. F. (2003) Sustained  $\text{Ca}^{2+}$  transfer across mitochondria is essential for mitochondrial  $\text{Ca}^{2+}$  buffering, store-operated  $\text{Ca}^{2+}$  entry, and  $\text{Ca}^{2+}$  store refilling. *J. Biol. Chem.* **278**, 44769-44779.
- 4 Kleizen, B. and Braakman, I. (2004) Protein folding and quality control in the endoplasmic reticulum. *Curr. Opin. Cell Biol.* **16**, 343-349.
- 5 Ellgaard, L. and Helenius, A. (2003) Quality control in the endoplasmic reticulum. *Nat. Rev. Mol. Cell. Biol.* **4**, 181-191.
- 6 Fliegel, L., Burns, K., MacLennan, D. H., Reithmeier, R. A. and Michalak, M. (1989) Molecular cloning of the high affinity calcium-binding protein (calreticulin) of skeletal muscle sarcoplasmic reticulum. *J. Biol. Chem.* **264**, 21522-21528.
- 7 Corbett, E. F., Michalak, K. M., Oikawa, K., Johnson, S., Campbell, I. D., Eggleton, P., Kay, C. and Michalak, M. (2000) The conformation of calreticulin is influenced by the endoplasmic reticulum luminal environment. *J. Biol. Chem.* **275**, 27177-27185.
- 8 Corbett, E. F., Oikawa, K., Francois, P., Tessier, D. C., Kay, C., Bergeron, J. J., Thomas, D. Y., Krause, K. H. and Michalak, M. (1999)  $\text{Ca}^{2+}$  regulation of interactions between endoplasmic reticulum chaperones. *J. Biol. Chem.* **274**, 6203-6211.
- 9 Corbett, E. F. and Michalak, M. (2000) Calcium, a signaling molecule in the endoplasmic reticulum? *Trends Biochem. Sci.* **25**, 307-311.

- 10 Kapoor, M., Srinivas, H., Kandiah, E., Gemma, E., Ellgaard, L., Oscarson, S., Helenius, A. and Surolia, A. (2003) Interactions of substrate with calreticulin, an endoplasmic reticulum chaperone. *J. Biol. Chem.* **278**, 6194-6200.
- 11 Ben-Zeev, O., Mao, H. Z. and Doolittle, M. H. (2002) Maturation of lipoprotein lipase in the endoplasmic reticulum. Concurrent formation of functional dimers and inactive aggregates. *J. Biol. Chem.* **277**, 10727-10738.
- 12 Jethmalani, S. M. and Henle, K. J. (1998) Calreticulin associates with stress proteins: implications for chaperone function during heat stress. *J. Cell. Biochem.* **69**, 30-43.
- 13 Zhang, L., Wu, G., Tate, C. G., Lookene, A. and Olivecrona, G. (2003) Calreticulin promotes folding/dimerization of human lipoprotein lipase expressed in insect cells (Sf21). *J. Biol. Chem.* **278**, 29344-29351.
- 14 Neve, B. P., Verhoeven, A. J., Kalkman, I. and Jansen, H. (1998) Maturation and secretion of rat hepatic lipase is inhibited by alpha1B-adrenergic stimulation through changes in Ca<sup>2+</sup> homeostasis: thapsigargin and EGTA both mimic the effect of adrenaline. *Biochem. J.* **330**, 701-706.
- 15 Malli, R., Frieden, M., Trenker, M. and Graier, W. F. (2005) The role of mitochondria for Ca<sup>2+</sup> refilling of the ER. *J. Biol. Chem.* **280**, 12114-12122.
- 16 Dobson, C. M. (2001) The structural basis of protein folding and its links with human disease. *Philos. Trans. R. Soc. Lond. B Biol. Sci.* **356**, 133-145.
- 17 Horwich, A. (2002) Protein aggregation in disease: a role for folding intermediates forming specific multimeric interactions. *J. Clin. Invest.* **110**, 1221-1232.
- 18 Araki, E., Oyadomari, S. and Mori, M. (2003) Endoplasmic reticulum stress and diabetes mellitus. *Intern. Med.* **42**, 7-14.
- 19 Yamagishi, S. I., Edelstein, D., Du, X. I. and Brownlee, M. (2001) Hyperglycemia potentiates collagen-induced platelet activation through mitochondrial superoxide overproduction. *Diabetes* **50**, 1491-1494

- 20 Paltauf-Doburzynska, J., Malli, R. and Graier, W. F. (2004) Hyperglycemic conditions affect shape and Ca<sup>2+</sup> homeostasis of mitochondria in endothelial cells. *J. Cardiovasc. Pharmacol.* **44**, 424-437
- 21 Ben-Zeev, O., Doolittle, M. H., Davis, R. C., Elovson, J. and Schotz, M. C. (1992) Maturation of lipoprotein lipase. Expression of full catalytic activity requires glucose trimming but not translocation to the cis-Golgi compartment. *J. Biol. Chem.* **267**, 6219-6227.
- 22 Edgell, C. J., McDonald, C. C. and Graham, J. B. (1983) Permanent cell line expressing human factor VIII-related antigen established by hybridization. *Proc. Natl. Acad. Sci. U S A* **80**, 3734-3737.
- 23 Strauss, J. G., Frank, S., Kratky, D., Hammerle, G., Hrzenjak, A., Knipping, G., von Eckardstein, A., Kostner, G. M. and Zechner, R. (2001) Adenovirus-mediated rescue of lipoprotein lipase-deficient mice. Lipolysis of triglyceride-rich lipoproteins is essential for high density lipoprotein maturation in mice. *J. Biol. Chem.* **276**, 36083-36090.
- 24 Zoratti, C., Kipmen-Korgun, D., Osibow, K., Malli, R. and Graier, W. F. (2003) Anandamide initiates Ca<sup>2+</sup> signaling via CB2 receptor linked to phospholipase C in calf pulmonary endothelial cells. *Br. J. Pharmacol.* **140**, 1351-1362.
- 25 Schaeffer, G., Levak-Frank, S., Spitaler, M. M., Fleischhacker, E., Esenabhalu, V. E., Wagner, A. H., Hecker, M. and Graier, W. F. (2003) Intercellular signalling within vascular cells under high D-glucose involves free radical-triggered tyrosine kinase activation. *Diabetologia* **46**, 773-783.
- 26 Lowry, O. H., Rosebrough, N. J., Farr, A. L. and Randall, R. J. (1951) Protein measurement with folin-phenol-reagent. *J. Biol. Chem.* **193**, 265-275.
- 27 Zechner, R. (1990) Rapid and simple isolation procedure for lipoprotein lipase from human milk. *Biochim. Biophys. Acta* **1044**, 20-25.

- 28 Graier, W. F., Paltauf-Doburzynska, J., Hill, B. J., Fleischhacker, E., Hoebel, B. G., Kostner, G. M. and Sturek, M. (1998) Submaximal stimulation of porcine endothelial cells causes focal  $\text{Ca}^{2+}$  elevation beneath the cell membrane. *J. Physiol.* **506**, 109-125.
- 29 Frieden, M., Malli, R., Samardzija, M., Demaurex, N. and Graier, W. F. (2002) Subplasmalemmal endoplasmic reticulum controls  $\text{K}_{\text{Ca}}$  channel activity upon stimulation with a moderate histamine concentration in a human umbilical vein endothelial cell line. *J. Physiol.* **540**, 73-84.
- 30 Palmer, A. E., Jin, C., Reece, J. C. and Tsien, R. Y. (2003) Bcl-2-mediated alterations in endoplasmic reticulum  $\text{Ca}^{2+}$  analyzed with an improved genetically encoded fluorescent sensor. *Proc. Natl. Acad. Sci. U S A* **101**, 17404-17409
- 31 Berryman, D. E. and Bensadoun, A. (1995) Heparan sulfate proteoglycans are primarily responsible for the maintenance of enzyme activity, binding, and degradation of lipoprotein lipase in Chinese hamster ovary cells. *J. Biol. Chem.* **270**, 24525-24531.
- 32 Paltauf-Doburzynska, J., Frieden, M. and Graier, W. F. (1999) Mechanisms of  $\text{Ca}^{2+}$  store depletion in single endothelial cells in a  $\text{Ca}^{2+}$ -free environment. *Cell Calcium* **25**, 345-353.
- 33 Sedova, M. and Blatter, L. A. (2000) Intracellular sodium modulates mitochondrial calcium signaling in vascular endothelial cells. *J. Biol. Chem.* **275**, 35402-35407.
- 34 Camps, L., Reina, M., Llobera, M., Bengtsson-Olivecrona, G., Olivecrona, T. and Vilaro, S. (1991) Lipoprotein lipase in lungs, spleen, and liver: synthesis and distribution. *J. Lipid Res.* **32**, 1877-1888.
- 35 Camps, L., Reina, M., Llobera, M., Vilaro, S. and Olivecrona, T. (1990) Lipoprotein lipase: cellular origin and functional distribution. *Am. J. Physiol.* **258**, C673-681.
- 36 Paltauf-Doburzynska, J., Frieden, M., Spitaler, M. and Graier, W. F. (2000) Histamine-induced  $\text{Ca}^{2+}$  oscillations in a human endothelial cell line depend on

- transmembrane ion flux, ryanodine receptors and endoplasmic reticulum  $\text{Ca}^{2+}$ -ATPase. *J. Physiol.* **524**, 701-713.
- 37 Cudna, R. E. and Dickson, A. J. (2003) Endoplasmic reticulum signaling as a determinant of recombinant protein expression. *Biotechnol. Bioeng.* **81**, 56-65.
- 38 Rutkowski, D. T. and Kaufman, R. J. (2004) A trip to the ER: coping with stress. *Trends Cell Biol.* **14**, 20-28.
- 39 Verkhatsky, A. and Petersen, O. H. (2002) The endoplasmic reticulum as an integrating signalling organelle: from neuronal signalling to neuronal death. *Eur. J. Pharmacol.* **447**, 141-154.
- 40 Ahner, A. and Brodsky, J. L. (2004) Checkpoints in ER-associated degradation: excuse me, which way to the proteasome? *Trends Cell Biol.* **14**, 474-478.
- 41 Kim, P. S. and Arvan, P. (1998) Endocrinopathies in the family of endoplasmic reticulum (ER) storage diseases: disorders of protein trafficking and the role of ER molecular chaperones. *Endocr. Rev.* **19**, 173-202.
- 42 Boedeker, J. C., Doolittle, M. H. and White, A. L. (2001) Differential effect of combined lipase deficiency (cld/cld) on human hepatic lipase and lipoprotein lipase secretion. *J. Lipid Res.* **42**, 1858-1864.
- 43 Pieper, G. M. and Dondlinger, L. (1997) Glucose elevations alter bradykinin-stimulated intracellular calcium accumulation in cultured endothelial cells. *Cardiovasc. Res.* **34**, 169-178.
- 44 Nishikawa, T., Edelstein, D., Du, X. L., Yamagishi, S., Matsumura, T., Kaneda, Y., Yorek, M. A., Beebe, D., Oates, P. J., Hammes, H. P., Giardino, I. and Brownlee, M. (2000) Normalizing mitochondrial superoxide production blocks three pathways of hyperglycaemic damage. *Nature* **404**, 787-790.

- 45 Graier, W. F., Simecek, S., Kukovetz, W. R. and Kostner, G. M. (1996) High D-glucose-induced changes in endothelial  $\text{Ca}^{2+}$ /EDRF signaling are due to generation of superoxide anions. *Diabetes* **45**, 1386-1395.
- 46 Graier, W. F., Wascher, T. C., Lackner, L., Toplak, H., Krejs, G. J. and Kukovetz, W. R. (1993) Exposure to elevated D-glucose concentrations modulates vascular endothelial cell vasodilatory response. *Diabetes* **42**, 1497-1505.
- 47 Fleischhacker, E., Esenabhalu, V. E., Spitaler, M., Holzmann, S., Skrabal, F., Koidl, B., Kostner, G. M. and Graier, W. F. (1999) Human diabetes is associated with hyperreactivity of vascular smooth muscle cells due to altered subcellular  $\text{Ca}^{2+}$  distribution. *Diabetes* **48**, 1323-1330.
- 48 Fleischhacker, E., Esenabhalu, V. E., Holzmann, S., Skrabal, F., Koidl, B., Kostner, G. M. and Graier, W. F. (2000) In human hypercholesterolemia increased reactivity of vascular smooth muscle cells is due to altered subcellular  $\text{Ca}^{2+}$  distribution. *Atherosclerosis* **149**, 33-42.



## FIGURE LEGENDS

### **Figure 1. Inhibition of SERCA is a proper tool for an exhaustive ER Ca<sup>2+</sup> depletion and consequently attenuates activity and secretion, but not transcription of endogenous LPL**

Cells were transiently transfected with D1<sub>ER</sub> or loaded with fura-2/am in order to monitor Ca<sup>2+</sup> signals in the ER (**A**) and cytoplasm (**B**), respectively. Cells were kept in the continuous presence of 2 mM extracellular Ca<sup>2+</sup> under control conditions (continuous line, open circles; A, n=3; B, n=8) or were stimulated with 15 μM BHQ as indicated (dotted line, filled circles; A, n=3; B, n=8). Tracings show the average curve, points and error bars represent the mean ± SEM from all experiments. \**P*<0.05 vs. control. *Panels C, D and E*: Serum-starved CHO-K1 cells were propagated in culture medium under control condition (continuous line, open circles) or with application of 15 μM BHQ as indicated (dotted line, filled circles). LPL activity in cell lysates (**C**) and supernatants (**D**) was measured in hourly taken samples as described in the Methods section. One representative experiment out of 3 is shown. \**P*<0.05 vs. control. (**E**) Using RT-PCR, the constitutive expression of GAPDH and LPL in untreated CHO-K1 cells (“-“) and after 3 h exposure to 15 μM BHQ (“+“) were validated.

### **Figure 2. ER Ca<sup>2+</sup> depletion reduces activity and secretion of adenovirus-encoded LPL in endothelial cells**

Cells were infected with adenovirus encoding human LPL (100 MOI) and incubated in serum-free culture medium without any further treatment (continuous line, open circles) or an inhibition of SERCA by addition of 15 μM BHQ as indicated (dotted line, filled circles). Every hour, samples were taken and LPL activity in cell lysates (**A**) and aliquots of the supernatant (**B**) was acquired as described in the Methods section. One representative experiment out of 3 is shown. Tracings show the average curve, points and error bars represent the mean ± SEM from all experiments. \**P*<0.05 vs. control.

**Figure 3. Adenovirus-mediated expression of LPL is not altered by BHQ treatment**

By RT-PCR (A), the adenovirus-mediated transcription of LPL (left panel) was assessed in endothelial cells and normalized for endogenous GAPDH (right panel) after 1, 2 and 3 h in the absence (control), presence (BHQ) or following washout (BHQ washout) of 15  $\mu\text{M}$  BHQ. Tracings show the average curve, points and error bars represent the mean  $\pm$  SEM of three independent experiments.  $*P < 0.05$  vs. control. For Western Blot analysis (B), identical amounts of protein of cell lysates (upper panel) and identical volumes of the corresponding supernatants (lower panel) were separated on 12.5% SDS-polyacrylamide gels and blotted onto nitrocellulose. Lanes show the expression of LPL and  $\alpha$ -actin in adenovirus-infected endothelial cells after 1, 2, 3 and 4 h in the absence (control) or after 1, 2 and 3 h in presence (BHQ) or following washout (BHQ washout) of 15  $\mu\text{M}$  BHQ. Positions of standard proteins are marked.

**Figure 4. Stimulation of endothelial cells with histamine yields temporary ER  $\text{Ca}^{2+}$  depletion despite large elevation in the cytoplasmic  $\text{Ca}^{2+}$  concentration and transiently lowers activity and secretion of LPL whereas removal of extracellular  $\text{Ca}^{2+}$  yields pronounced  $\text{Ca}^{2+}$  depletion and attenuation of LPL maturation**

$\text{Ca}^{2+}$  signals in the ER (A) and cytoplasm (B) of endothelial cells were monitored using  $\text{D1}_{\text{ER}}$  and fura-2, respectively. The respective  $\text{Ca}^{2+}$  concentration was monitored under control conditions (continuous line, open circles A,  $n=3$ ; B,  $n=8$ ) or upon stimulation with 100  $\mu\text{M}$  histamine in the presence of 2 mM extracellular  $\text{Ca}^{2+}$  (dotted line, filled circles A,  $n=3$ ; B,  $n=10$ ) or 1 mM EGTA (i.e. nominal  $\text{Ca}^{2+}$ -free buffer; discontinuous line, filled squares; A,  $n=3$ ; B,  $n=10$ ) as indicated. Tracings show the average curve and points represent the mean  $\pm$  SEM from all experiments.  $*P < 0.05$  vs. control. *Panels C and D:* Adenovirus-infected endothelial cells were incubated in serum-free culture medium without (continuous line, open circles) or with addition of 100  $\mu\text{M}$  histamine (dotted line, filled circles) or stimulated with

histamine in in nominal  $\text{Ca}^{2+}$ -free solution (i.e. serum-free culture medium containing 2.5 mM EGTA; dotted line, filled squares. Hourly, LPL activity in cell lysates (**C**) and aliquots of the supernatant (**D**) was validated as described in the Methods section.  $*P < 0.05$  vs. control (n=6).

**Figure 5. The inhibition of trans-mitochondrial  $\text{Ca}^{2+}$  flux yields pronounced  $\text{Ca}^{2+}$  depletion of the ER, prevents its refilling and decreases activity and secretion of LPL during physiological cell stimulation**

$\text{Ca}^{2+}$  signals in the ER (**A**) and cytoplasm (**B**) of endothelial cells were monitored using  $\text{D1}_{\text{ER}}$  and fura-2, respectively. As indicated, cells were either kept under control conditions (Control, continuous line, open circles; A, n=3; B, n=8) or stimulated with 100  $\mu\text{M}$  histamine in  $\text{Ca}^{2+}$  containing buffer (Histamine, discontinuous line, filled circles; A, n=3; B, n=8) or in the presence of 20  $\mu\text{M}$  CGP 37157 (dotted line, open squares; A, n=4; B, n=9) and the respective  $\text{Ca}^{2+}$  concentration was monitored as described under Methods.  $*P < 0.05$  vs. control. *Panels C and D:* Adenovirus-infected endothelial cells were incubated in serum-free culture medium (continuous line, open circles) or stimulated with 100  $\mu\text{M}$  histamine without (dotted line, filled circles) or with 20  $\mu\text{M}$  CGP 37187 (dotted line, open squares). LPL activity was measured hourly in cell lysates (**C**) and aliquots of the supernatant (**D**).  $^{\#}P < 0.05$  vs. control (n=6) and  $*P < 0.05$  vs. histamine (n=3-6).

**Figure 6. Activity and secretion of LPL is marginally attenuated by removal of extracellular  $\text{Ca}^{2+}$  but not affected by CGP 37157 per se.**

Adenovirus-infected endothelial cells were incubated in serum-free culture medium without (continuous line, open circles) and with 20  $\mu\text{M}$  CGP 37187 (dotted line, open squares) or 2.5 mM EGTA (discontinuous line, filled squares). LPL activity was measured hourly in cell lysates (**A**) and aliquots of the supernatant (**B**).  $^{\#}P < 0.05$  vs. control (n=6) and  $*P < 0.05$  vs. histamine (n=3-6).

Figure 1

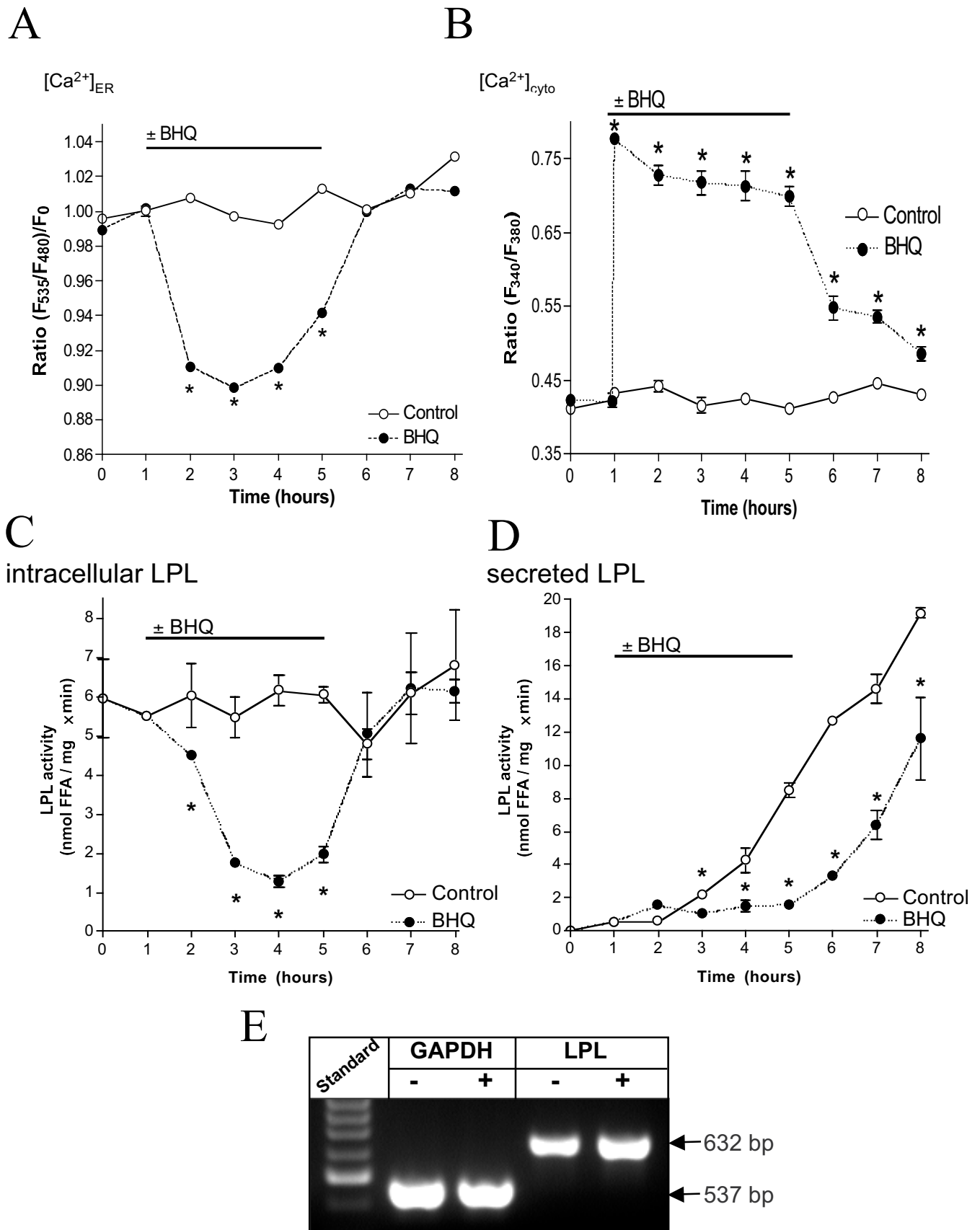


Figure 2

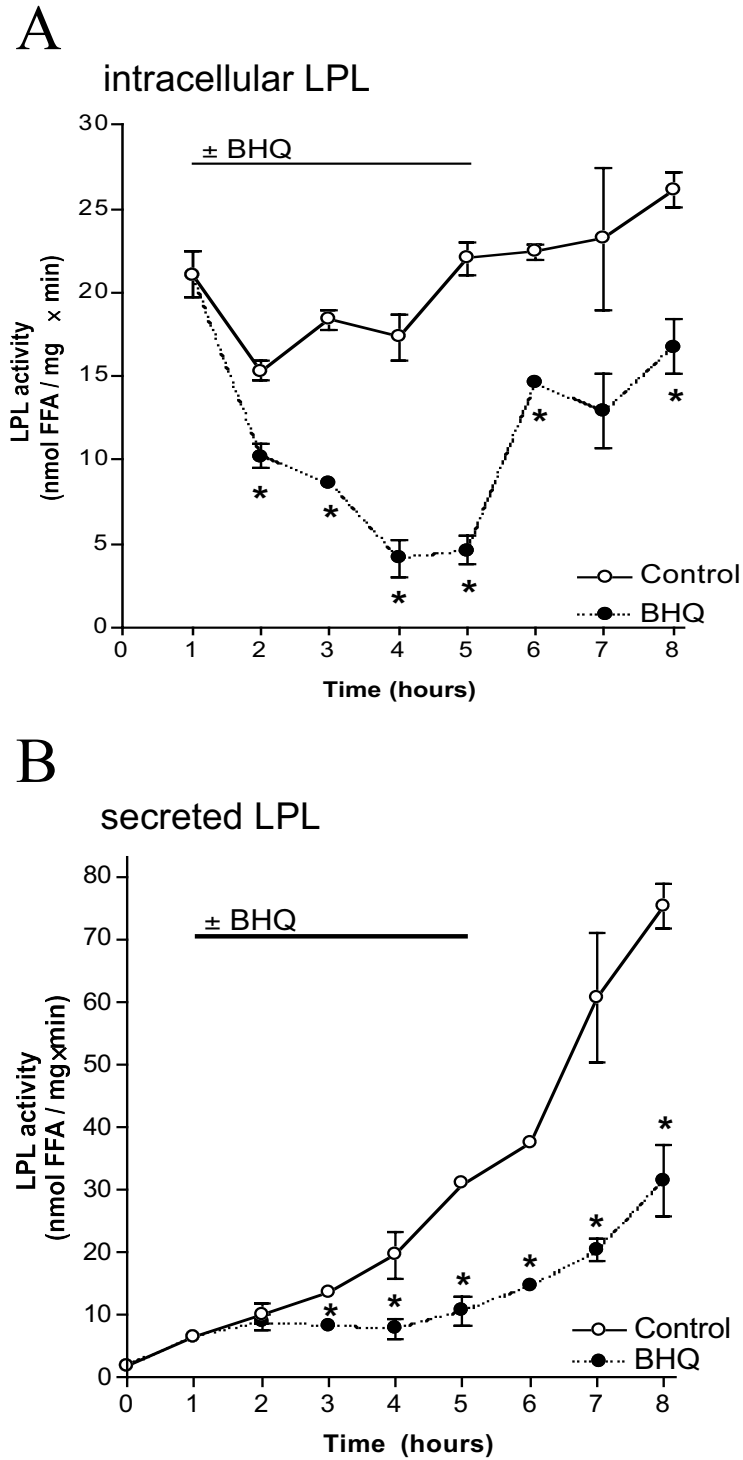
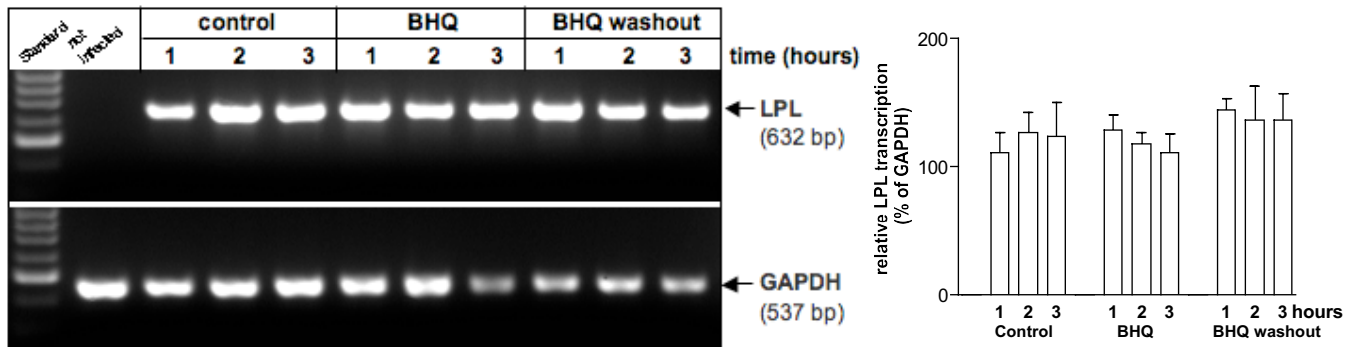


Figure 3

A



B

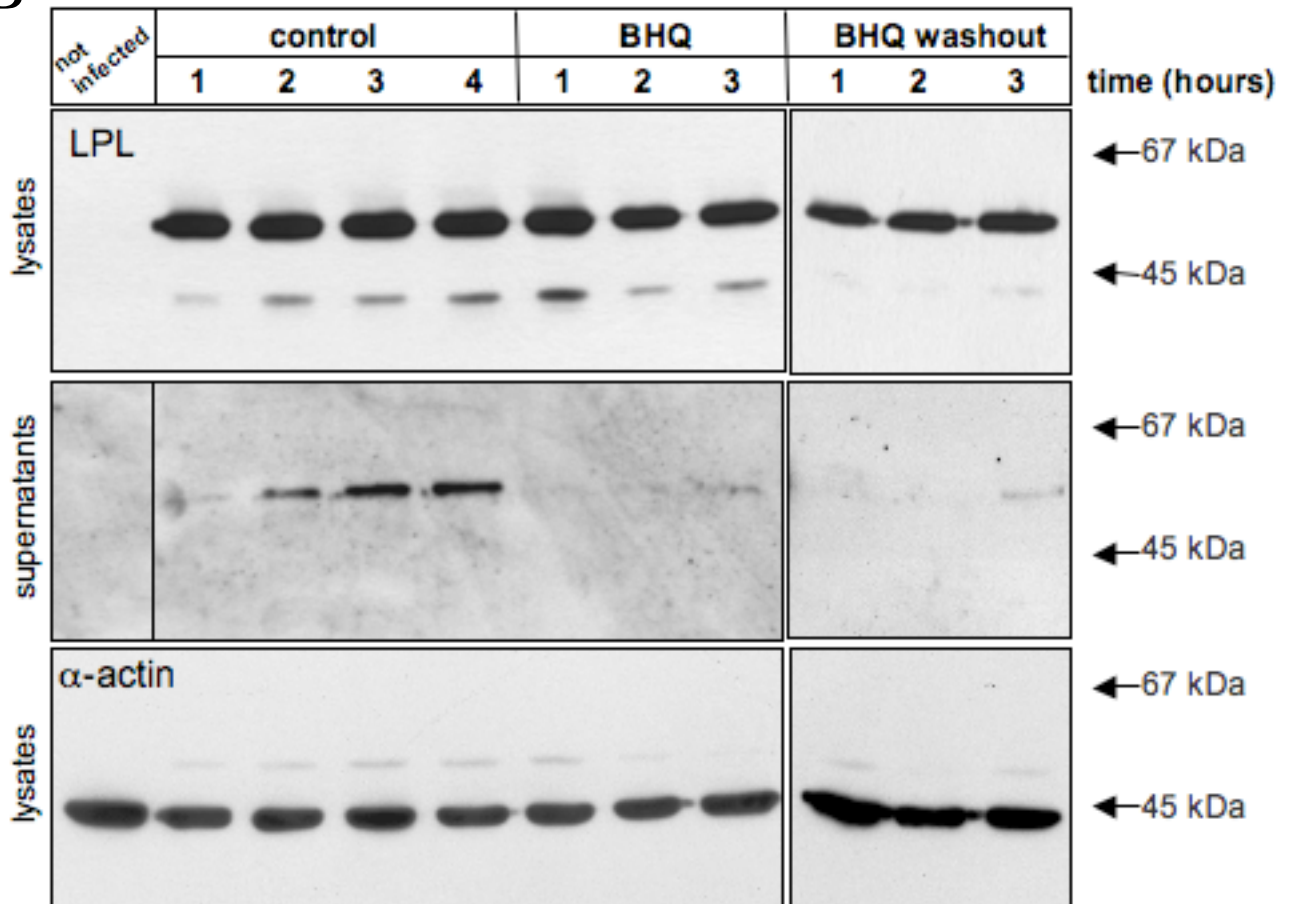


Figure 4

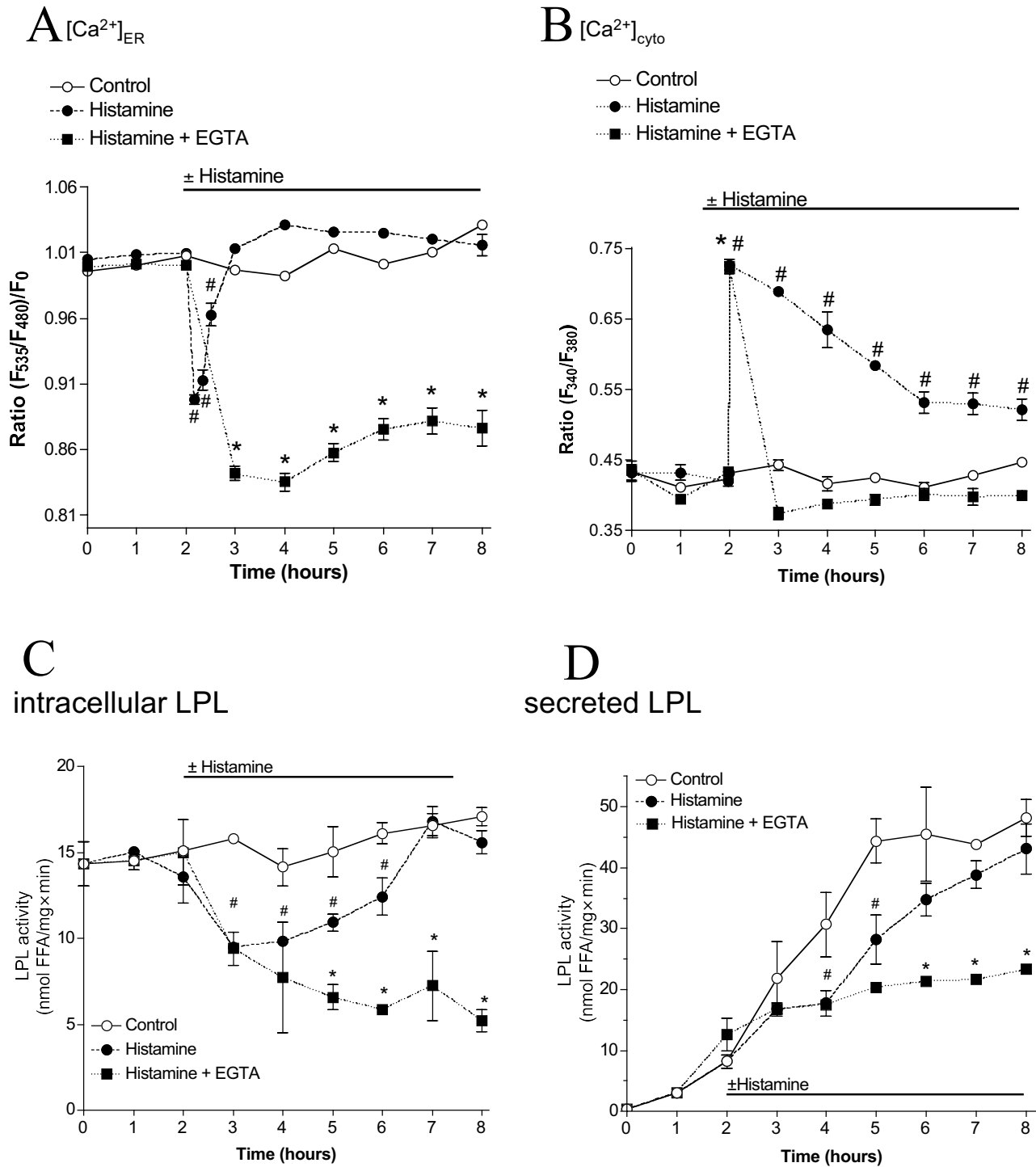
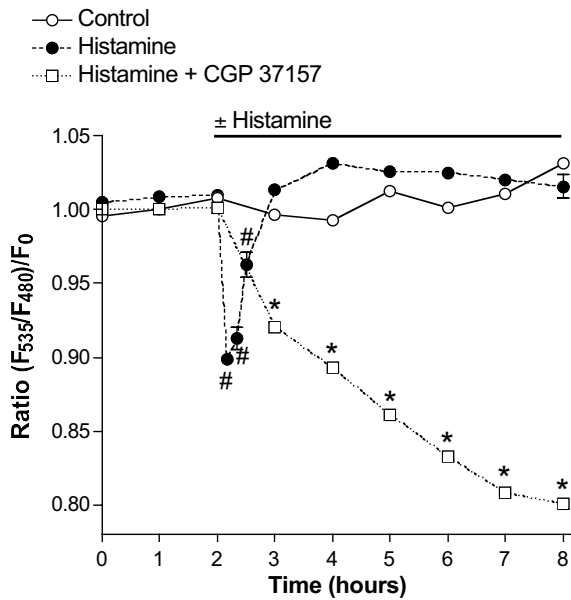
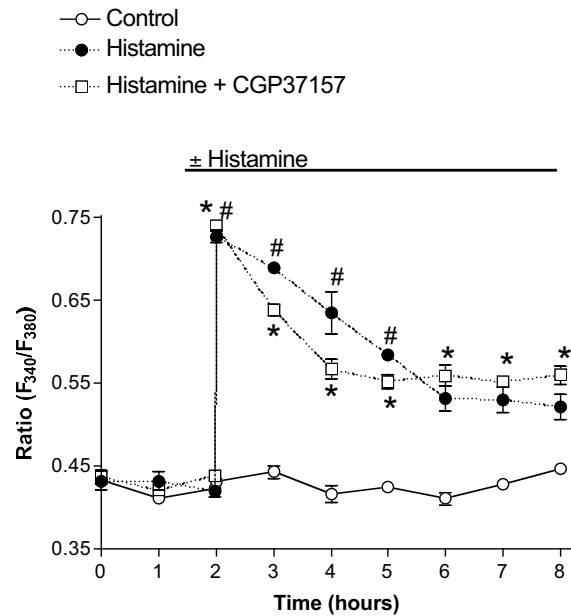


Figure 5

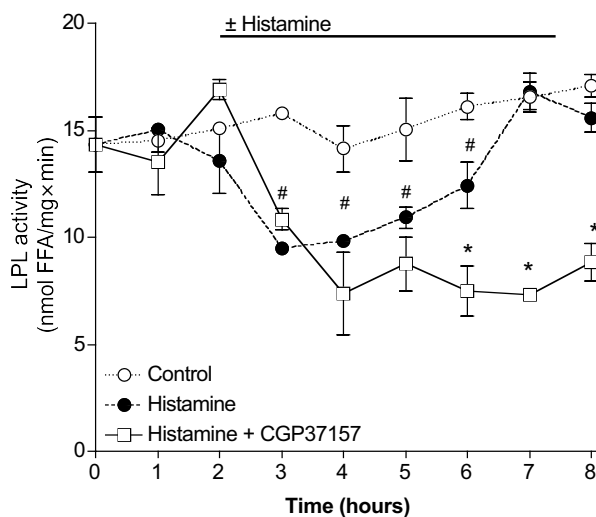
**A**  $[Ca^{2+}]_{ER}$



**B**  $[Ca^{2+}]_{cyto}$



**C**  
intracellular LPL



**D**  
secreted LPL

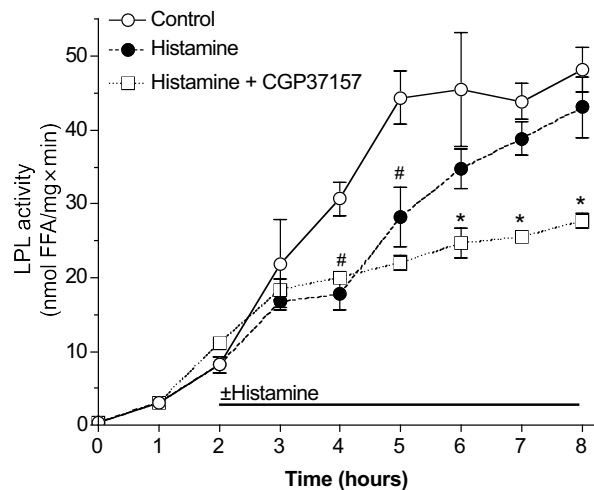
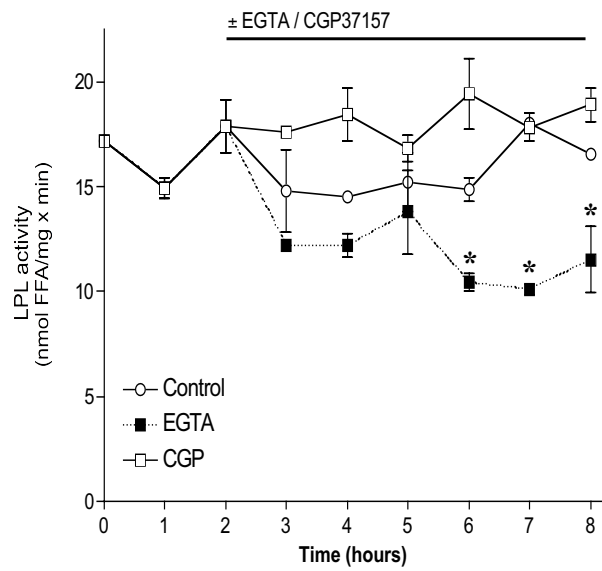




Figure 6

A

intracellular LPL



B

secreted LPL

