



HAL
open science

Development and use of a microreactor for the study of biotransformations by a cross-linked γ -lactamase enzyme

Anne Marie Hickey, Bongkot Ngamsom, Charlotte Wiles, Gillian M Greenway,
Paul Watts, Jennifer A Littlechild

► To cite this version:

Anne Marie Hickey, Bongkot Ngamsom, Charlotte Wiles, Gillian M Greenway, Paul Watts, et al.. Development and use of a microreactor for the study of biotransformations by a cross-linked γ -lactamase enzyme. *Biotechnology Journal*, 2009, 4 (4), pp.510-n/a. 10.1002/biot.200800302 . hal-00477776

HAL Id: hal-00477776

<https://hal.science/hal-00477776>

Submitted on 30 Apr 2010

HAL is a multi-disciplinary open access archive for the deposit and dissemination of scientific research documents, whether they are published or not. The documents may come from teaching and research institutions in France or abroad, or from public or private research centers.

L'archive ouverte pluridisciplinaire **HAL**, est destinée au dépôt et à la diffusion de documents scientifiques de niveau recherche, publiés ou non, émanant des établissements d'enseignement et de recherche français ou étrangers, des laboratoires publics ou privés.



Development and use of a microreactor for the study of biotransformations by a cross-linked γ -lactamase enzyme

Journal:	<i>Biotechnology Journal</i>
Manuscript ID:	BIOT-2008-0302.R2
Wiley - Manuscript type:	Research Article
Date Submitted by the Author:	21-Jan-2009
Complete List of Authors:	Hickey, Anne Marie; University of Exeter, School of Biosciences Ngamsom, Bongkot; University of Hull, Chemistry Wiles, Charlotte; University of Hull, Chemistry Greenway, Gillian; University of Hull, Chemistry Watts, Paul; University of Hull, Chemistry Littlechild, Jennifer; University of Exeter, School of Biosciences
Keywords:	(γ)- γ -lactamase , micro-reactor , immobilization



1
2
3 **Research Article ((4540 words))**
4

5
6 **Development and use of a microreactor for the study of biotransformations by**
7
8 **a cross-linked γ -lactamase enzyme**
9

10
11
12
13
14
15
16 A. M. Hickey^a, B. Ngamsom^b, C. Wiles^b, G. M. Greenway^b, P. Watts^b and J.A.
17
18 Littlechild^{a*}
19

20
21
22
23
24
25 ^aHenry Wellcome Building for Biocatalysis, School of Biosciences, University of
26
27 Exeter, Stocker Road, Exeter, EX4 4QD, UK;

28
29
30 ^bDepartment of Chemistry, The University of Hull, Cottingham Road, Hull, HU6
31
32 7RX, UK
33

34
35
36
37 *Corresponding author: Tel: +44 1392 263468. Fax: +44 1392 263489. E-mail
38
39 address: j.a.littlechild@ex.ac.uk.
40
41
42
43
44
45
46
47
48
49
50
51
52
53
54
55
56
57
58
59
60

Abstract

1
2
3
4
5
6 A (+)- γ -lactamase was precipitated, cross-linked and the resulting solid crushed
7
8 prior to immobilization within a capillary column micro reactor. The micro reactor
9
10 was subsequently used to study enzyme stability, activity, kinetics and substrate
11
12 specificity. The thermophilic (+)- γ -lactamase retained 100 % of its initial activity at
13
14 the assay temperature, 80 °C, for 6 h and retained 52 % activity after 10 h, indicating
15
16 the advantage of immobilization. This high stability of the immobilized enzyme
17
18 provided the advantage that it could be utilized to screen many compounds in the
19
20 microreactor system. This advantage overcame the fact that the immobilization
21
22 process affected enzyme kinetics and activity, which was reduced (by 70%)
23
24 compared to the free enzyme. In general, the enzyme displayed similar substrate
25
26 specificity to that found in a previous study for the free enzyme, however, enhanced
27
28 activity was seen towards one substrate, acrylamide. The system developed
29
30 correlates well with the free enzyme in batch assay and indicates the suitability of
31
32 the system for enzyme substrate screening, allowing a significant reduction in cost,
33
34 due to the reduced amounts of enzyme, substrates and other assay constituents
35
36 required.
37
38
39
40
41
42
43
44
45
46
47
48
49
50
51
52
53
54
55
56
57
58
59
60

1. Introduction

In recent times, biocatalysis has received much attention with regard to the synthesis of precursors and intermediates in the production of high value chemicals. The use of enzymes in the production of chiral intermediates for pharmaceuticals, along with the synthesis of chiral bulk, fine chemicals and active pharmaceuticals have been the subject of numerous reviews[1-3]. The reasons for interest in enzymes include their substrate specificity and ability to generate chiral products in high purity, which is particularly advantageous when specific high-value products are required and chemical synthesis has failed to produce a similar product.

The discovery of potential industrial biocatalysts is often limited by a number of factors, such as the potential cost and instability of the enzymes of interest. Screening of potential biocatalysts is usually performed in batch reactions, which can prove expensive when enzymes serve a single-use purpose. However, their immobilization reduces the cost of production considerably because, rather than being lost at the end of the biocatalytic process, the enzyme can be recycled and used again. Immobilization has also been shown, previously, to increase enzyme stability [4-6].

Microfluidic reactors offer a solution to the costly nature of screening enzymes for activity on a range of substrates as they afford a significant reduction in reagent quantities required, due to their reduced scale when compared with batch reaction systems, thus reducing the cost of screening a range of substrates. Originally developed for chemical applications, microfluidic reactors offer advantages which

1
2
3 include a reduction in cost, greater control of reaction parameters, hazard reduction
4
5 and potential for scale-up [7].
6
7

8 The application of enzymes as biocatalysts in microfluidic reactors has been
9
10 previously demonstrated and a number of different approaches have been studied [8,
11
12 9]. In order to limit the cost of enzyme use in microfluidic reactors, enzymes are
13
14 often immobilized. A number of immobilization methods frequently used in larger
15
16 reactors, such as alginate-, polyacrylamide- and sepharose-based gels are unsuitable
17
18 for use in microfluidic reactors, due to their propensity to generate prohibitive back
19
20 pressures. Among the methods of immobilization used, monoliths have proved quite
21
22 successful, particularly when used with trypsin [10-15]. Peterson *et al.* found that
23
24 tryptic digests performed by monolith-bound trypsin in microfluidic reactors
25
26 exhibited 67 % sequence coverage of myoglobin, yielding 102 of 153 possible
27
28 peptide fragments [9]. The disadvantage of the monolith systems is that high back
29
30 pressures can occur when pumping the substrate through the monolith. An
31
32 alternative approach has therefore been to crosslink the enzyme to the microfluidic
33
34 reactor surface which has met with some success for analytical separations. Honda *et*
35
36 *al.* cross-linked L-aminoacylase to PTFE, allowing substrate flow over the surface to
37
38 allow conversion [16], while Thomsen *et al.* cross-linked β -galactosidase to an
39
40 amino-silanized microfluidic reactor [17]. This approach does not, however, provide
41
42 the high loading of enzyme required for synthetic conversions.
43
44
45
46
47
48
49

50 The aim of this work was develop a robust screening method to study
51
52 biotransformations using (+)- γ -lactamase enzyme. This activity has been
53
54 demonstrated to be important to produce (-) γ -lactam which is an important building
55
56
57
58
59
60

1
2
3 block for the synthesis of carbocyclic nucleosides which have potent anti-viral
4 activity due to their inhibitory effect on viral reverse transcriptase [18-20]. In
5 previous work a (+)- γ -lactamase enzyme from *Sulfolobus solfataricus* MT4 had been
6 cloned and overexpressed in *Escherichia coli* DH5 [21] and was shown to have a
7 preference for (+)- γ -lactam, while exhibiting activity towards a range of amides.
8 This paper describes an effective method where a cross-linked γ -lactamase, obtained
9 by precipitation and chemical cross-linking, has been packed into a channel to give
10 an efficient enzyme micro-reactor with low back pressure.
11
12
13
14
15
16
17
18
19
20
21

22 **2. Materials and Methods**

23 **2.1 Chemicals**

24
25
26
27
28
29
30
31
32
33
34
35
36
37
38
39
40
41
42
43
44
45
46
47
48
49
50
51
52
53
54
55
56
57
58
59
60
Chemicals were purchased from the sources indicated and were used as supplied; acrylamide (97%, Aldrich), acetamide (98%, Sigma), *m*-aminobenzamide (99%, Sigma), *p*-aminobenzamide (98%, Aldrich), *m*-aminobenzoic acid (98 %, Aldrich), benzamide (99 %, Aldrich), benzoic acid (99 %, Aldrich), butyramide (98 %, Fluka), isobutyramide (99 %, Aldrich), propionamide (97 %, Aldrich), formamide (98 %, Avocado), (+/-)- γ -lactam (98 %, Aldrich), nicotinamide (98 %, Sigma), (R)-(+)-lactamide (97 %, Aldrich), *m*-toluamide (99 %, Aldrich), *p*-toluamide (99 %, Aldrich), *m*-toluic acid (99 %, Fluka), *p*-toluic acid (98 %, Fluka), nicotinic acid (99 %, Sigma-Aldrich), formaldehyde (40 % solution, BDH), ammonium sulphate (\geq 99 %, Sigma), bichinchonic acid (Sigma), bovine serum albumin (>98 %, BSA) (Sigma). Methanol and acetonitrile used as HPLC mobile phase were of HPLC grade and purchased from Fisher Scientific.

55 **2.2 Preparation of (+)- γ -lactamase**

2.2.1 Enzyme Solution

An overnight culture of *Escherichia coli* harbouring the (+)- γ -lactamase gene was grown in Luria Bertani broth containing ampicillin (100 mg L^{-1}) at $37 \text{ }^{\circ}\text{C}$ and 200 rpm. This overnight culture was used to inoculate 1 L cultures and expression of the gene was induced by addition of IPTG (1 mM) and incubation for a further 3 h. The cells were harvested by centrifugation at $12,000 \text{ g}$ for 20 min at $4 \text{ }^{\circ}\text{C}$ and resuspended in Tris-HCl, pH 8.0 (10 % w/v). The cells were disrupted by four cycles of 30 s of sonication. The cell debris was precipitated out of suspension by centrifugation at $18,000 \text{ g}$ for 30 min at $4 \text{ }^{\circ}\text{C}$. This cell-free supernatant was used for all investigations.

2.2.2 Cross-Linked Enzyme

The method used was based on the method of Cao *et al.* [22]. A cell-free enzyme solution was precipitated with ammonium sulfate (80 % saturation), on ice with stirring. The precipitate was cross-linked by the addition of formaldehyde (1 % v/v) and the suspension was left to stir on ice for 1.5 h. The precipitate was then filtered using Whatman No. 1 filter paper and washed several times with water to remove all traces of formaldehyde. The cross-linked enzyme was dried in a desiccator, at which point the cross-linked enzyme was ready for use in the micro reactor.

2.3 Protein Determination

Protein concentration was determined by a modification of the bicinchoninic acid method for protein determination supplied by Sigma-Aldrich. BSA was used as a standard in the range $0\text{-}1 \text{ mg mL}^{-1}$.

2.4 Microfluidic Enzyme Reactor

1
2
3 The microfluidic enzyme reactors used consisted of capillary tubes with a frit at one
4 end (length = 6.5 cm and i.d. = 1.2×10^{-3} m, BLAUBRAND®). Detail for the
5 preparation of the frit is found in [23]. The dried cross-linked (+)- γ -lactamase was
6 mixed with controlled pore glass (120-200 mesh, 500 Å nominal pore diameter) in
7 the ratio 1:1 and packed in a fritted capillary column.
8
9

10 11 12 13 14 15 **2.5 Enzyme Assays**

16 17 18 **2.5.1 Standard (+)- γ -lactamase Assay:**

19 (+)- γ -Lactamase activity was determined by incubating the enzyme in a 1 mL assay,
20 containing 10 mM benzamide in 10 mM $\text{KH}_2\text{PO}_4/\text{K}_2\text{HPO}_4$ (pH 7.0) for 10 min at 80
21 °C. Analysis was performed by high performance liquid chromatography (HPLC).
22 The reaction was terminated by adding 100 μL to 900 μL of 50:50 methanol:
23 $\text{KH}_2\text{PO}_4/\text{K}_2\text{HPO}_4$ (pH 7.0), the mobile phase. Samples were injected onto a BDS C₁₈
24 Hypersil® reversed-phase column (Phenomenex, UK) and a mobile phase flow rate
25 of 1 mL min⁻¹ employed. The eluent was monitored at 225 nm. One unit of enzyme
26 activity (U) is defined as the amount of enzyme that converts 1 μmole of benzamide
27 to benzoic acid in 1 min at a given temperature.
28
29
30
31
32
33
34
35
36
37
38
39
40
41

42 43 **2.5.2 Micro reactor Enzyme Assay**

44 A solution of 10 mM benzamide in $\text{KH}_2\text{PO}_4/\text{K}_2\text{HPO}_4$ (pH 7.0) was passed through
45 the enzyme bed using a syringe pump at flow rates between 1-5 $\mu\text{L min}^{-1}$. Enzyme
46 activity was initially investigated by monitoring the conversion of benzamide to
47 benzoic acid at temperatures between 30-80 °C. Substrate screening was also carried
48 out on a number of other substrates. Substrates and reaction products were detected
49 by HPLC equipped with a BDS C₁₈ Hypersil® column.
50
51
52
53
54
55
56
57
58
59
60

1
2
3 For most assays, detection was performed at 225 nm with a flow rate of 1 mL min⁻¹
4 and 50:50 methanol: KH₂PO₄/K₂HPO₄ (pH 7.0) used as the mobile phase.
5
6

7
8 HPLC conditions to detect nicotinamide and nicotinamic acid were 216 nm, 1 mL
9 min⁻¹ and 20:20:60 methanol: acetonitrile: water.
10
11

12
13 Other aliphatic substrates and aliphatic acids were detected at 210 nm, with the same
14 column and mobile phase.
15
16

17
18 The formation of benzoyl hydrazide was investigated by reacting 10 mM benzamide
19 with 400 mM hydrazine in KH₂PO₄/K₂HPO₄ (pH 8.5) at 80 °C and a flow rate of 1
20 μL min⁻¹. The reaction was monitored by HPLC operating at 225 nm with a flow
21 rate of 1 mL min⁻¹ and 50:50 methanol: KH₂PO₄/K₂HPO₄ (pH 7.0) was used as the
22 mobile phase.
23
24
25
26
27
28

29 **3. Results and discussion**

30 **3.1 Immobilization and optimization of activity of cross-linked (+)-γ-** 31 **lactamase in a capillary column micro reactor** 32 33

34
35 Cross-linked (+)-γ-lactamase (Figure 1) was dried and crushed and packed in a ratio
36 of 1:1 with controlled pore glass in silica-fritted capillary tubes. The enzyme was
37 initially packed in the capillary tubes without controlled pore glass but the levels of
38 back pressure developed were prohibitive to the systems operation (results not
39 shown). The cross-linked protein concentration was calculated based on the
40 difference between the protein concentration prior to and after precipitation and
41 cross-linking and indicated that the dry weight of the cross-linked protein was equal
42 to the predicted protein content, based on these calculations. The cross-linked (+)-γ-
43 lactamase protein sample was from a crude protein mixture where it was over-
44
45
46
47
48
49
50
51
52
53
54
55
56
57
58
59
60

1
2
3 expressed to represent 5% of the total protein, as based on observation on a SDS-
4
5
6 PAGE gel. Therefore it was not possible to determine the absolute concentration of
7
8 the enzyme. The total amount of protein in the micro-reactor column was 5mg
9
10 protein as determined by the bicinchoninic acid assay as described in Materials and
11
12 Methods.

13
14
15 Once the enzyme was immobilized it was tested for activity, by measuring its
16
17 conversion of the aromatic amidase substrate, benzamide (10 mM). Enzyme activity
18
19 was measured, using a flow rate of $1 \mu\text{L min}^{-1}$, at different temperatures (Figure 2).
20
21 Enzyme activity was found to be optimal at 80 °C, a result similar to that found
22
23 previously [21]. All further experiments were carried out at this temperature, unless
24
25 otherwise indicated. Despite the enzyme being of thermophilic origin, it was still
26
27 necessary to investigate its ability to retain its activity in this system at the reaction
28
29 temperature.
30
31
32

33 34 **3.2 Performance of (+)- γ -lactamase in microfluidic reactor**

35
36 The performance of the immobilized enzyme micro reactor was monitored by
37
38 continuous operation of the micro reactor at 80 °C, using a benzamide concentration
39
40 of 10 mM. Enzyme activity was found to be retained at 100 % conversion for 6 h of
41
42 continuous flow, after which there was a reduction in activity, with 52 % conversion
43
44 after 10 h (Figure 3), indicating the enzymes ability to retain activity for a significant
45
46 time at the reaction temperature. This is a significant improvement when compared
47
48 with the free enzyme, which began to display a reduction in activity after 1 h at 80
49
50 °C. After 6h, when the immobilized enzyme began to display a loss of activity, the
51
52 free enzyme activity was less than 20% of the original activity observed. The
53
54
55
56
57
58
59
60

1
2
3 thermal stability results suggest that the cross-linked γ -lactamase has potential for
4 further development, especially in biotransformations where a higher temperature
5 can be advantageous in increasing substrate solubility and rate of reaction.
6
7

8
9
10 Enzyme activity was also measured at a number of flow rates (0-10 $\mu\text{L min}^{-1}$), to
11 determine the effect of flow rate on activity (Figure 4). The conversion of substrate,
12 2.5, 5.0, 10 mM benzamide, at a number of flow rates up to 50 $\mu\text{L min}^{-1}$ was
13 monitored (all results not shown). While 100 % conversion was maintained at all
14 concentrations at a flow rate of 1 $\mu\text{L min}^{-1}$ at 80 °C, conversion was reduced at the
15 lower temperatures of 60 °C and 70 °C (Figure 4a). At shorter residence times,
16 where faster flow rates ($\geq 2 \mu\text{L min}^{-1}$) were used, conversions were also reduced
17 (Figure 4b).
18
19

20 **3.3 Enzyme substrate screening**

21
22 In previous studies free (+)- γ -lactamase was found to convert only (+)- γ -lactam in a
23 racemic mix [21]. The enzyme micro reactor also converted 50.0 % of racemic γ -
24 lactam, confirming the retention of its stereospecificity after immobilization. The
25 enzyme was screened for activity against a range of aliphatic substrates (Table 1).
26 The enzyme was not active towards formamide and acetamide, whose chains appear
27 to be too short for good interaction. Hydrophobic interactions with substrates
28 consisting of aliphatic carbon chains were minimally achieved. Activity towards
29 propionamide (16.0 %) was half that observed for butyramide (33.4 %). The enzyme
30 displayed a preference for branched chains, as indicated by its preference for
31 isobutyramide (58.7 %) over butyramide. Substrate specificity of the immobilized
32 (+)- γ -lactamase was also investigated for other aromatic substrates, *i.e.* *m*-toluamide,
33
34
35
36
37
38
39
40
41
42
43
44
45
46
47
48
49
50
51
52
53
54
55
56
57
58
59
60

1
2
3
4
5
6
7
8
9
10
11
12
13
14
15
16
17
18
19
20
21
22
23
24
25
26
27
28
29
30
31
32
33
34
35
36
37
38
39
40
41
42
43
44
45
46
47
48
49
50
51
52
53
54
55
56
57
58
59
60

p-toluamide, *m*-aminobenzamide, *p*-aminobenzamide and nicotinamide using the optimum reaction conditions as observed from the use of benzamide as a substrate. Among the other aromatic amides tested, *m*-toluamide and *p*-toluamide were readily hydrolyzed (100.0 %) whereas lower activities were observed for *m*-aminobenzamide (24.3 %) and *p*-aminobenzamide (11.0 %). While the aromatic amidase from *Pseudomonas sp.* GDI 211 exhibited activity on nicotinamide, the immobilized (+)- γ -lactamase was not found to be active towards nicotinamide [24]. This lack of enzyme activity towards nicotinamide suggests the negative effect of the substitution of one carbon of the ring with nitrogen. Similar behaviour was reported in other work involving this enzyme, reported as a recombinant amidase, where the hydrophobic substituent CH₃ in the aromatic ring had positive effect and the hydrophilic substituent NH₂ negatively affected the activity, independently of the position of substitution with respect to the carboxamide group [25]. To discriminate between the substrates that exhibited 100 % conversion, the cross-linked enzyme was assayed at a faster flow rate of 2 $\mu\text{L min}^{-1}$, allowing a residence time of 31.5 min. Once the micro reactor flow rate was increased, it was found that substrate preference was in the following order (+/-)- γ -lactam > (R)-(+)-lactamide > benzamide > *m*-toluamide > *p*-toluamide, similar to the original investigation with the free enzyme [21]. The enzymes conversion of toluamide and aminobenzamide indicated that the enzyme had a preference for *m*- over *p*-substituted substrates. Another amidase enzyme, isolated from *Pseudonocardia thermophila*, also exhibited broad specificity, but was selective for aliphatic amides such as propionamide and acrylamide and the *S*-form of 2-phenylpropionamide [26], a feature also observed in

1
2
3
4
5
6
7
8
9
10
11
12
13
14
15
16
17
18
19
20
21
22
23
24
25
26
27
28
29
30
31
32
33
34
35
36
37
38
39
40
41
42
43
44
45
46
47
48
49
50
51
52
53
54
55
56
57
58
59
60

Sulfolobus tokodaii strain 7 [27] and *Sulfolobus solfataricus* MT4 [25, 28], which indicates that the enzyme under investigation in this work has the potential to favour either (*S*)- or (*R*)-forms of different substrates, since it has been shown to be selective for (*R*)-(+)-lactamide and the (*S*)-form of 2-phenylpropionamide. In contrast to the previous study, the enzyme was moderately specific toward acrylamide (39.4 %) within the miniaturised flow reactor. This increased activity may be attributable to increased contact between enzyme and substrate in the micro reactor set-up.

Although the enzyme micro reactor was assayed at its optimum temperature, the enzyme was still active at lower temperatures which could, therefore, be used if required.

The immobilized (+)- γ -lactamase was also examined for acyl transfer activity, a property of amidases first described in *Rhodococcus rhodochrous* J1 by Kobayashi *et al.* [29]. In the presence of hydrazine, it was found to be capable of producing 100% yield of benzoyl hydrazide with no benzoic acid by-product. This also correlated well with previous work using this clone [21].

3.4 Comparison of activity of immobilized and soluble enzyme

3.4.1 Enzyme activity studies

Enzyme activity was measured with 10 mM benzamide in phosphate buffer, pH 7.0. Specific activity was calculated and cross-linked (+)- γ -lactamase was found to have an activity of 0.122 U mg⁻¹ when assayed at 80 °C, with a residence time of 63 min. Soluble (+)- γ -lactamase activity was found to be 0.400 U mg⁻¹, which indicates a 69.5 % reduction in enzyme activity upon immobilization. Although the free enzyme

1
2
3 activity is lower than the activity reported previously [21, 25], it can be explained by
4
5 the fact that the enzyme preparation was a crude cell extract, which had not
6
7 undergone any purification. In these papers, activity towards benzamide was 7.4 U
8
9 mg^{-1} and 13.8 U mg^{-1} , respectively, at 85 °C. While purification may have increased
10
11 activity, it may also have resulted in a reduction in the proportion of enzyme activity
12
13 retained after immobilization, since the presence of a number of other proteins may
14
15 have had a protective effect towards the enzyme. The reduction in enzyme activity
16
17 upon immobilization was quite significant and would indicate the severity of the
18
19 immobilization procedure. Whereas there was a 69.5 % drop in amidase specific
20
21 activity in microfluidic reactors, compared with free enzyme, a 40 % reduction was
22
23 observed with penicillin acylase when it was immobilized in a similar manner [22].
24
25 It is not unusual to find a reduction in activity upon immobilization [30, 31] and
26
27 quite often the extent is an enzyme-specific factor. This drop in activity was of less
28
29 importance than the stability of the immobilized enzyme in micro reactors where
30
31 100% conversion is being achieved.
32
33
34
35
36
37
38

39 **3.4.2 Enzyme kinetics studies**

40
41 In order to further investigate the effects of immobilization on enzyme activity, a
42
43 study of enzyme kinetics was carried out. Conversion of the model substrate,
44
45 benzamide, by micro reactor-immobilized cross-linked protein was monitored at 80
46
47 °C, with a flow rate of 21.5 $\mu\text{L min}^{-1}$ and a residence time of 2 min, over a range of
48
49 substrate concentrations, 0.5, 1.0, 1.5, 2.0 and 2.5 mM. The kinetic constants, K_m
50
51 and V_{max} , were determined to be 1.89 mM and 0.22 mM min^{-1} , respectively. It is not
52
53
54
55
56
57
58
59
60

possible to determine the K_{cat} of the enzyme since the exact concentration of enzyme in the cross-linked protein cannot be calculated (see section 3.1).

The kinetic constants of the free enzyme, in solution, were also determined for comparison. The enzyme was also assayed at 80 °C and the K_m and V_{max} were determined to be 0.49 mM and 1.40 mM min⁻¹, a K_m of 0.3 mM was previously reported by d'Abusco *et al.* [25], they did not indicate the enzymes V_{max} . These results suggest that there was a reduction in enzyme affinity and maximum rate upon immobilization. They also suggest that immobilization caused reduced enzyme efficiency, probably the result of its exposure to formaldehyde during the immobilization process, which was also indicated by the reduction in enzyme specific activity. A similar effect was observed when laccase and chloroperoxidase CLECs were prepared by using glutaraldehyde to cross-link the laccase and chloroperoxidase crystals [32, 33]. While there was a significant reduction in enzyme activity, this did not prevent its investigation as a substrate screening tool, since the micro reactor system still required significantly lower quantities of enzyme and substrates than batch screening would require and correlated well with previous batch screening.

4. Conclusions

A thermophilic (+)- γ -lactamase has been immobilized in the form of a cross-linked protein mixture and the immobilized enzyme maintained thermal stability at its optimum temperature, 80 °C for 6 h, allowing extensive screening using one microfluidic enzyme reactor. Screening of potential substrates employing

1
2
3 immobilized (+)- γ -lactamase in a miniaturised flow reactor can be achieved in a
4
5 shorter period of time and requires significantly less substrate than conventional
6
7 batch enzyme assays. While (+)- γ -lactam was the preferred substrate, the
8
9 immobilized enzyme readily hydrolyzed a number of other aromatic amides, *i.e.*
10
11 benzamide, *p*-toluamide and *m*-toluamide and exhibited an ability to produce acid
12
13 hydrazides.
14
15
16
17
18
19
20
21
22
23
24
25
26
27
28
29
30
31
32
33
34
35
36
37
38
39
40
41
42
43
44
45
46
47
48
49
50
51
52
53
54
55
56
57
58
59
60

For Peer Review

5. Acknowledgements

This work was funded by the Engineering and Physical Sciences Research Council,
UK (EPSRC).

For Peer Review

6. References

- [1] Schoemaker, H. E., Mink, D., Wubbolts, M. G. Dispelling the Myths-- Biocatalysis in Industrial Synthesis. *Science* 2003, 299, 1694-7.
- [2] Schulze, B., Wubbolts, M. G. Biocatalysis for industrial production of fine chemicals. *Curr. Opin. Biotechnol.* 1999, 10, 609-15.
- [3] Patel, R. N. Microbial/enzymatic synthesis of chiral intermediates for pharmaceuticals. *Enzyme Microb. Tech.* 2002, 31, 804-26.
- [4] Reetz, M. T., Zonta, A., Simpelkamp, J. Efficient immobilization of lipases by entrapment in hydrophobic sol-gel materials. *Biotechnol. Bioeng.* 1996, 49, 527-34.
- [5] Durán, N., Rosa, M. A., D'Annibale, A., Gianfreda, L. Applications of laccases and tyrosinases (phenoloxidases) immobilized on different supports: a review. *Enzyme Microb. Tech.* 2002, 31, 907-31.
- [6] Hernaiz, M. J., Crout, D. H. G. Immobilization/stabilization on Eupergit C of the β -galactosidase from *B. circulans* and an β -galactosidase from *Aspergillus oryzae*. *Enzyme Microb. Tech.* 2000, 27, 26-32.
- [7] DeWitt, S. H. Micro reactors for chemical synthesis. *Curr. Opin. Chem. Biol.* 1999, 3, 350-6.
- [8] Banu, S., Greenway, G. M., McCreedy, T., Shaddick, R. Microfabricated bioreactor chips for immobilised enzyme assays. *Anal. Chim. Acta* 2003, 486, 149-57.
- [9] Peterson, D. S., Rohr, T., Svec, F., chet, J. M. J. Enzymatic microreactor-on-a-chip: Protein mapping using trypsin immobilized on porous polymer monoliths molded in channels of microfluidic devices. *Anal. Chem.* 2002, 74, 4081-8.
- [10] Peterson, D. S., Rohr, T., Svec, F., chet, J. M. J. Dual-Function Microanalytical Device by In Situ Photolithographic Grafting of Porous Polymer Monolith: Integrating Solid-Phase Extraction and Enzymatic Digestion for Peptide Mass Mapping. *Anal. Chem.* 2003, 75, 5328-35.
- [11] Sakai-Kato, K., Kato, M., Toyo'Oka, T. Creation of an on-chip enzyme reactor by encapsulating trypsin in sol-gel on a plastic microchip. *Anal. Chem.* 2003, 75, 388-93.
- [12] Peterson, D. S., Rohr, T., Svec, F., chet, J. M. J. High-throughput peptide mass mapping using a microdevice containing trypsin immobilized on a

- porous polymer monolith coupled to MALDI TOF and ESI TOF mass spectrometers. *J. Proteome Res.* 2002, *1*, 563-8.
- [13] Ye, M., Hu, S., Schoenherr, R. M., Dovichi, N. J. On-line protein digestion and peptide mapping by capillary electrophoresis with post-column labeling for laser-induced fluorescence detection. *Electrophoresis* 2004, *25*, 1319-26.
- [14] Palm, A. K., Novotny, M. V. Analytical characterization of a facile porous polymer monolithic trypsin microreactor enabling peptide mass mapping using mass spectrometry. *Rapid Commun. Mass Spectrom.* 2004, *18*, 1374-82.
- [15] Feng, S., Ye, M., Jiang, X., Jin, W., Zou, H. Coupling the immobilized trypsin microreactor of monolithic capillary with μ RPLC-MS/MS for shotgun proteome analysis. *J. Proteome Res.* 2006, *5*, 422-8.
- [16] Honda, T., Miyazaki, M., Nakamura, H., Maeda, H. Facile preparation of an enzyme-immobilized microreactor using a cross-linking enzyme membrane on a microchannel surface. *Adv. Synth. Catal.* 2006, *348*, 2163-71.
- [17] Thomsen, M. S., Nidetzky, B. Microfluidic reactor for continuous flow biotransformations with immobilized enzymes: The example of lactose hydrolysis by a hyperthermophilic β -glycoside hydrolase. *Eng. Life Sci.* 2008, *8*, 40-8.
- [18] Taylor, S. J. C., McCague, R., Wisdom, R., Lee, C., Dickson, K., Ruecroft, G., O'Brien, F., Littlechild, J. Bevan, J. Roberts, S. M. Development of the biocatalytic resolution of 2-azabicyclo[2.2.1]hept-5-en-3-one as an entry to single-enantiomer carbocyclic nucleosides. *Tetrahedron: Asymmetr.* 1993, *4*, 1117-28.
- [19] Daluge, S. M., Good, S. S., Faletto, M. B., Miller, W. H., St.Clair, M. H., Boone, L. R. Tisdale, M, Parry, N. R., Reardon, J. E., Dornsife, R. E., Avarett, D. R., Krenitsky, T. A. 1592U89, a novel carbocyclic nucleoside analog with potent, selective anti-human immunodeficiency virus activity. *Antimicrob. Agents Chemother.* 1997, *41*, 1082-93.
- [20] Taylor, S. J. C., Brown, R. C., Keene, P. A., Taylor, I. N. Novel screening methods--the key to cloning commercially successful biocatalysts. *Bioorgan. Med. Chem.* 1999, *7*, 2163-8.
- [21] Toogood, H. S., Brown, R. C., Line, K., Keene, P. A., Taylor, S. J. C., McCague, R., Littlechild, J. A. The use of a thermostable signature amidase in the resolution of the bicyclic synthon (rac)-[γ]-lactam. *Tetrahedron* 2004, *60*, 711-6.

- 1
2
3
4
5
6
7
8
9
10
11
12
13
14
15
16
17
18
19
20
21
22
23
24
25
26
27
28
29
30
31
32
33
34
35
36
37
38
39
40
41
42
43
44
45
46
47
48
49
50
51
52
53
54
55
56
57
58
59
60
- [22] Cao, L., van Langen, L. M., van Rantwijk, F., Sheldon, R. A. Cross-linked aggregates of penicillin acylase: robust catalysts for the synthesis of [beta]-lactam antibiotics. *J. Mol. Catal. B: Enzym.* 2001, 11, 665-70.
- [23] May, S. W. New applications for biocatalysts. *Curr. Opin. Biotechnol.* 1997, 8, 181-6.
- [24] Kagayama, T., Ohe, T. Purification and properties of an aromatic amidase from *Pseudomonas* sp. GDI 211. *Agri. Biol. Chem. Tokyo* 1990, 54, 2565-71.
- [25] d' Abusco, A., Ammendola, S., Scandurra, R., Politi, L. Molecular and biochemical characterization of the recombinant amidase from hyperthermophilic archaeon *Sulfolobus solfataricus*. *Extremophiles* 2001, 5, 183-92.
- [26] Egorova, K., Trauthwein, H., Verseck, S., Antranikian, G. Purification and properties of an enantioselective and thermoactive amidase from the thermophilic actinomycete *Pseudonocardia thermophila*. *Appl. Microbiol. Biotechnol.* 2004, 65, 38-45.
- [27] Suzuki, Y., Ohta, H. Identification of a thermostable and enantioselective amidase from the thermoacidophilic archaeon *Sulfolobus tokodaii* strain 7. *Protein Expres. Purif.* 2006, 45, 368-73.
- [28] Cilia, E., Fabbri, A., Uriani, M., Scialdone, G. G., Ammendola, S. The signature amidase from *Sulfolobus solfataricus* belongs to the CX 3C subgroup of enzymes cleaving both amides and nitriles: Ser195 and Cys145 are predicted to be the active site nucleophiles. *FEBS J.* 2005, 272, 4716-24.
- [29] Kobayashi, M., Goda, M., Shimizu, S. Hydrazide Synthesis: Novel Substrate Specificity of Amidase. *Biochem. Biophys. Res. Co.* 1999, 256, 415-8.
- [30] Caruso, F., ler, C. Enzyme multilayers on colloid particles: Assembly, stability, and enzymatic activity. *Langmuir* 2000, 16, 9595-603.
- [31] Chen, Q., Kenausis, G. L., Heller, A. Stability of oxidases immobilized in silica gels. *J. Am. Chem. Soc.* 1998, 120, 4582-5.
- [32] Roy, J. J., Abraham, T. E. Preparation and characterization of cross-linked enzyme crystals of laccase. *J. Mol. Catal. B: Enzym.* 2006, 38, 31-6.
- [33] Ayala, M., Horjales, E., Pickard, M. A., Vazquez-Duhalt, R. Cross-linked crystals of chloroperoxidase. *Biochem. Biophys. Res. Co.* 2002, 295, 828-31.

Legend of Figures

Figure 1. SEM Image of cross-linked enzyme

Figure 2. Effect of temperature on substrate conversion by cross-linked enzyme

Figure 3. Enzyme activity retention at optimum reaction temperature by (○) free enzyme and (●) cross-linked enzyme.

Figure 4. Effect of flow rate on substrate conversion at (a) different reaction temperatures (●) 80 °C, (○) 70 °C, (▼) 60 °C and (b) different concentrations at 80 °C. (●) 2.5 mM, (○) 5.0 mM, (▼) 10.0 mM

Table 1. Substrates used by (+)- γ -lactamase. Substrate concentration of 10 mM

was used, at a flow rate of 1 $\mu\text{L min}^{-1}$, at 80°C

*Substrate conversions observed at a flow rate of 2 $\mu\text{l min}^{-1}$

**Substrate conversions (out of a maximum of 50%)

Substrate	Substrate conversion (%)
(+/-)- γ -Lactam**	50.0 (50.0)*
(<i>R</i>)-(+)-Lactamide	100 (85.0)*
Benzamide	100 (61.1)*
<i>m</i> -Toluamide	100 (56.1)*
<i>p</i> -Toluamide	100 (41.0)*
Isobutyramide	58.7
Acrylamide	39.4
Butyramide	33.4
<i>m</i> -Aminobenzamide	24.3
Propionamide	16.0
<i>p</i> -Aminobenzamide	11.0
Nicotinamide	0
Acetamide	0
Formamide	0

1
2
3
4
5
6
7
8
9 **Figure 1**
10
11
12
13
14
15
16

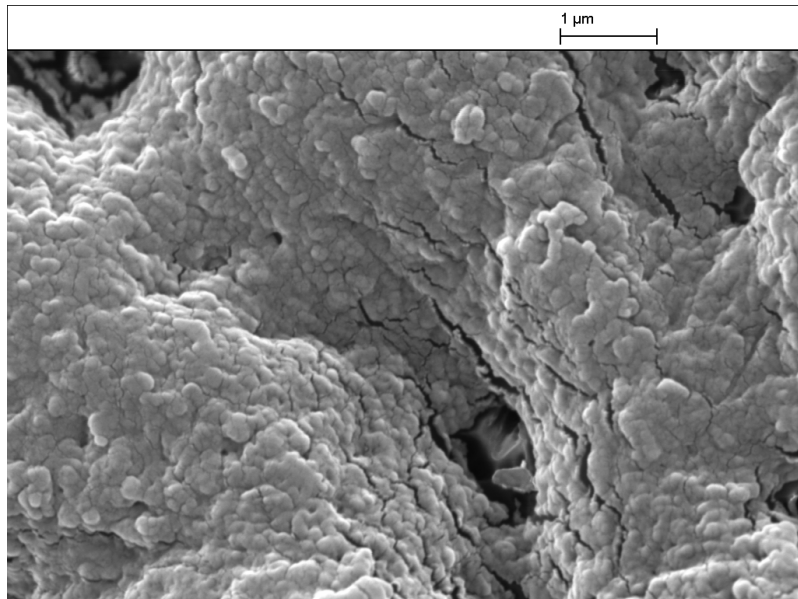
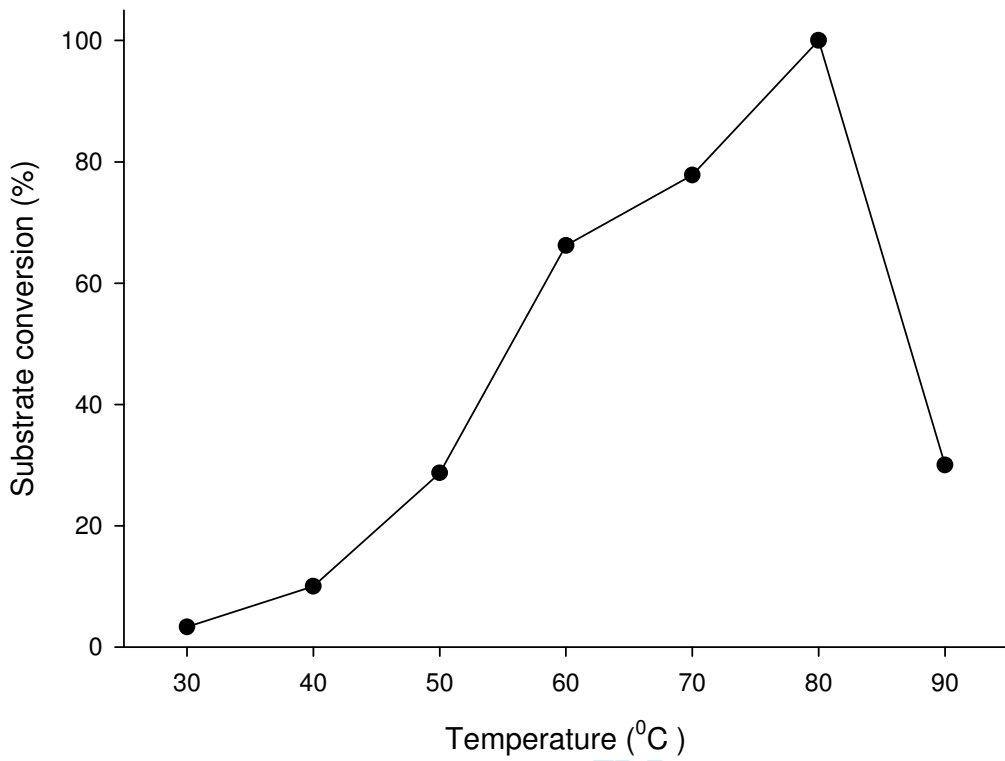


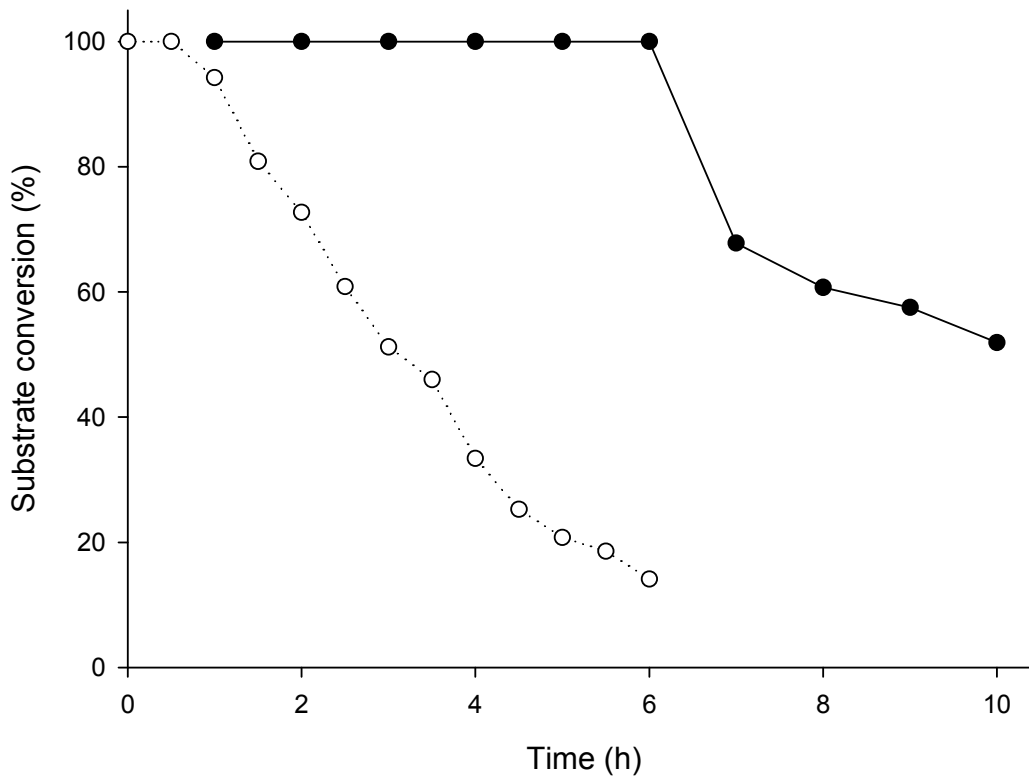
Figure 2.



review

1
2
3
4
5
6
7
8
9
10
11
12
13
14
15
16
17
18
19
20
21
22
23
24
25
26
27
28
29
30
31
32
33
34
35
36
37
38
39
40
41
42
43
44
45
46
47
48
49
50
51
52
53
54
55
56
57
58
59
60

For Peer Review



Review

Figure 4 (a).

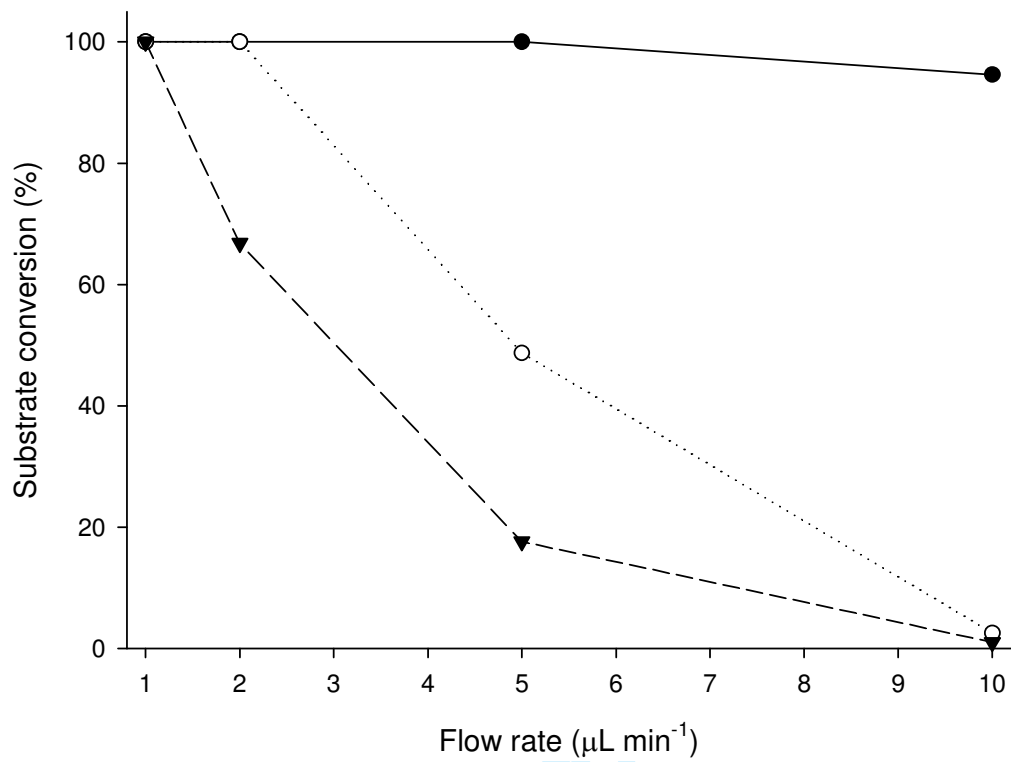
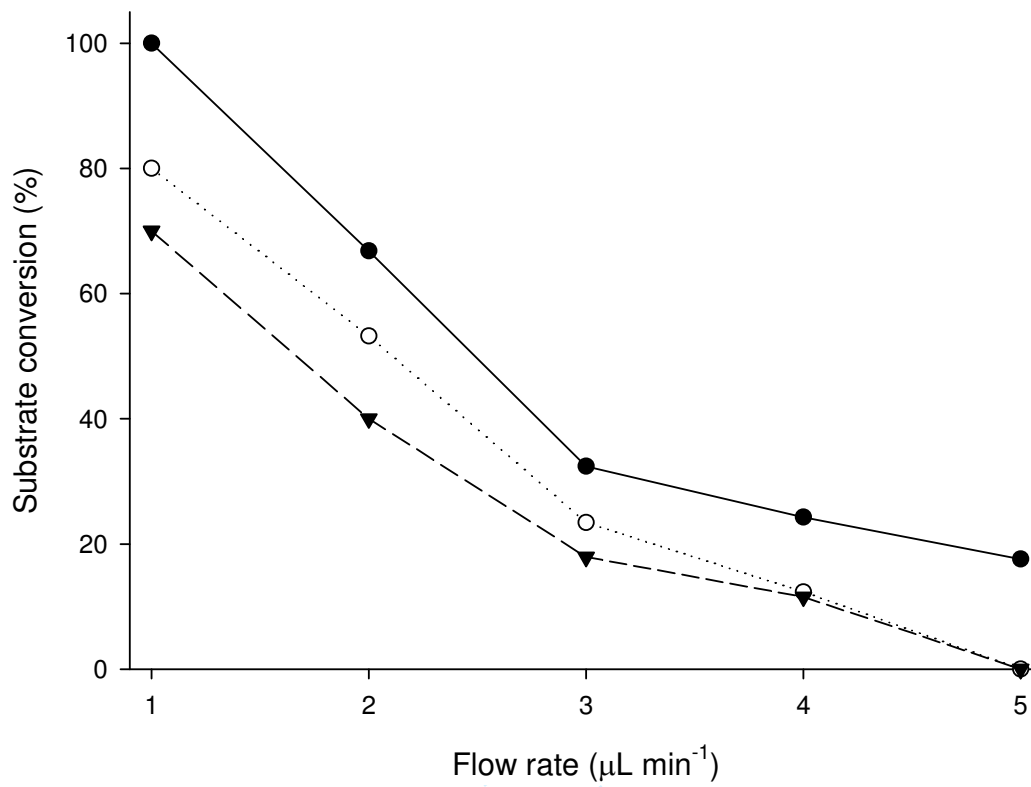


Figure 4 (b).



1
2
3
4
5
6
7
8
9
10
11
12
13
14
15
16
17
18
19
20
21
22
23
24
25
26
27
28
29
30
31
32
33
34
35
36
37
38
39
40
41
42
43
44
45
46
47
48
49
50
51
52
53
54
55
56
57
58
59
60

For Peer Review