



HAL
open science

High order finite element calculations for the deterministic Cahn-Hilliard equation

Ludovic Goudenège, Daniel Martin, Grégory Vial

► **To cite this version:**

Ludovic Goudenège, Daniel Martin, Grégory Vial. High order finite element calculations for the deterministic Cahn-Hilliard equation. *Journal of Scientific Computing*, 2012, 52 (2), pp.294-321. 10.1007/s10915-011-9546-7. hal-00461231

HAL Id: hal-00461231

<https://hal.science/hal-00461231>

Submitted on 4 Mar 2010

HAL is a multi-disciplinary open access archive for the deposit and dissemination of scientific research documents, whether they are published or not. The documents may come from teaching and research institutions in France or abroad, or from public or private research centers.

L'archive ouverte pluridisciplinaire **HAL**, est destinée au dépôt et à la diffusion de documents scientifiques de niveau recherche, publiés ou non, émanant des établissements d'enseignement et de recherche français ou étrangers, des laboratoires publics ou privés.

High order finite element calculations for the deterministic Cahn-Hilliard equation

Ludovic Goudenège*, Daniel Martin†, Grégory Vial*

Abstract

In this work, we propose a numerical method based on high degree continuous nodal elements for the Cahn-Hilliard evolution. The use of the p -version of the finite element method proves to be very efficient and favorably compares with other existing strategies (C^1 elements, adaptive mesh refinement, multigrid resolution, etc). Beyond the classical benchmarks, a numerical study has been carried out to investigate the influence of a polynomial approximation of the logarithmic free energy and the bifurcations near the first eigenvalue of the Laplace operator.

Introduction

We consider an isothermal binary alloy of two species A and B , and denote by $u \in [-1, 1]$ the ratio between the two components. By thermodynamic arguments, and under a mass conservation property, Cahn and Hilliard described a fourth-order model for the evolution of an isotropic system of nonuniform composition or density. They introduced a free energy density \bar{f} to define a chemical potential, and use it in the classical transport equation (see [10], [12] and [13]). The total free energy \mathcal{F} of the binary alloy is a volume integral on Ω of this free energy density (bulk free energy):

$$\mathcal{F} := \int_{\Omega} \bar{f}(u, \nabla u, \nabla^2 u, \dots) \, dV. \quad (0.1)$$

They assumed \bar{f} to be a function of u and its spatial derivatives. A truncated Taylor expansion of \bar{f} has thus the following general form:

$$\bar{f}(u) \sim f(u) + L \cdot \nabla u + K_1 \otimes \nabla^2 u + \nabla u \cdot K_2 \cdot \nabla u, \quad (0.2)$$

where ∇ is the Nabla operator. By symmetry arguments, they showed that $L = \vec{0}$ and K_1 and K_2 are homothetic operators. Moreover they used Neumann boundary condition to cancel the term in $\nabla^2 u$ which yields

$$\mathcal{F} := \int_{\Omega} (f(u) + \kappa |\nabla u|^2) \, dV, \quad (0.3)$$

where κ is a parameter (often denoted $\varepsilon^2/2$) which is referred to as the *gradient coefficient*. Then, the chemical potential w is defined by:

$$w := f'(u) - 2\kappa \Delta u. \quad (0.4)$$

Δ is the Laplace operator. If we denote by J the flux and by $\mathcal{M}(u)$ the mobility, the classical Fick law provide the following equations:

$$\partial_t u = -\nabla \cdot J \text{ and } J = -\mathcal{M}(u) \nabla w. \quad (0.5)$$

AMS 2000 subject classifications. 65M60, 35K55, 35K65, 35K45, 82C26

Key words and phrases : Cahn-Hilliard, partial differential equations, bi-laplacian, p -version of the finite element method, spinodal decomposition, bifurcations.

*IRMAR, ENS Cachan Bretagne, CNRS, UEB, 35170 Bruz, France, firstname.name@bretagne.ens-cachan.fr

†IRMAR, Université de Rennes 1, Campus de Beaulieu, 35000 Rennes, France, daniel.martin@univ-rennes1.fr

Finally, the Cahn-Hilliard equation takes the following general form:

$$\begin{cases} \partial_t u = \nabla \cdot [\mathcal{M}(u) \nabla w], & \text{on } \Omega \subset \mathbb{R}^d, \\ w = \psi(u) - \varepsilon^2 \Delta u, & \text{on } \Omega \subset \mathbb{R}^d, \\ \nabla u \cdot \nu = 0 = \nabla w \cdot \nu, & \text{on } \partial\Omega, \end{cases} \quad (0.6)$$

where t denotes the time variable, $\varepsilon (= \sqrt{2\kappa})$ is a measure of the interfacial thickness, $\psi (= f')$ is a nonlinear term, \mathcal{M} is the mobility function, ν is the outward pointing unit normal on the boundary $\partial\Omega$. It is well known that the Cahn-Hilliard equation is a gradient flow in H^{-1} with Lyapunov energy functional \mathcal{F} .

For a regular uniform alloy, the free energy f is explicitly given by:

$$f : u \mapsto N_m k_B T_c \frac{1 - u^2}{2} + N_m k_B T \left[\frac{1 + u}{2} \ln \left(\frac{1 + u}{2} \right) + \frac{1 - u}{2} \ln \left(\frac{1 - u}{2} \right) \right], \quad (0.7)$$

where k_B is the Boltzmann constant, N_m a molecular density, T the temperature and $T_c > T$ the critical temperature. Thus the nonlinear term ψ is:

$$\psi := f' : u \mapsto -N_m k_B T_c u + \frac{N_m k_B T}{2} \ln \left(\frac{1 + u}{1 - u} \right), \quad (0.8)$$

which is singular at $u = \pm 1$. These singularities give rise to the first difficulty in a numerical study, so this function ψ is often replaced by the derivative of the classic quartic double-well potential, where f takes the following form:

$$f : u \mapsto \frac{1}{4} (1 - u^2)^2, \quad (0.9)$$

with derivative:

$$\psi : u \mapsto u^3 - u. \quad (0.10)$$

The Cahn-Hilliard equation has been extensively studied in the case where ψ is replaced by a polynomial function (see [12], [22] and [30]). Furthermore, this model has been used successfully for describing phase separation phenomena, see for example the survey [28], and the references therein, or other recent results on spinodal decomposition and nucleation in [5, 7, 17, 25, 26, 32, 33, 37]. Recently, Ma and Wang have studied the stationary solutions of the Cahn-Hilliard equation (see [23]). The case of non smooth ψ has been the object of much less research (see [8] and [15]).

Other frequent simplifications are often made. The mobility \mathcal{M} is often assumed to be constant and the physical parameters are set to 1 - as we have done above in (0.9). For a more physically relevant choice of mobility, we mention [36] where the following form is proposed $\mathcal{M}(u) = \max\{0, 1 - u^2\}$. Among the physical parameters, ε has a peculiar role since it may lead to different asymptotic behaviors and equilibria (see [24] and section 3). The study of evolution with $\varepsilon \rightarrow 0$ is of great importance: in particular a constant mobility leads to a Mullins-Sekerka evolution (nonlocal coupling) whereas a degenerate mobility leads to a purely local geometric motion (see [4]). Furthermore, when the interface thickness is of the order of a nanometer, an artificially large parameter ε is often used to regularize the numerical problem. When a fine resolution is out of reach, a change in the height of the barrier between wells in the free energy density, coupled with a change on ε , allows simulations with larger length scales (see [35] for details).

The evolution of the solution of (0.6) can essentially be split into two stages. The first one is the *spinodal decomposition* described in section 2 where the two species quickly separate from each other. In longer time, the evolution is slower, and the solution tends to reduce its interfacial energy. These two evolutions require different methods for an efficient global simulation. In the beginning, a very small time step and a precise grid resolution allow efficient computation. But this is not appropriate to get long-time behaviors. So an adaptative time accurate or/and an adaptative mesh can improve the efficiency of the algorithms. However, in the long-time evolution, the interfaces have to be precisely captured so that a global adaptative mesh cannot be used. In the literature, many technical ideas have been studied: adaptive refinement of the time-stepping or of the mesh,

C^1 elements (see [35]), multigrid resolution (see [21]).

We propose here an alternative method using high degree C^0 lagrangian nodal finite elements under a constant mobility $\mathcal{M} \equiv 1$. The use of p -version (increasing polynomial degree, see [2]) instead of h -version (decrease mesh-step) has proved to be efficient for propagation [1, 19, 20], corner singularities [34], or oscillating problems [9]. The numerical results obtained here with the finite element library MÉLINA [27] show that this method is suitable in the Cahn-Hilliard framework as well.

Our paper is organized as follows: in section 1, we shortly describe the discretization (in both time and space) including the nonlinear solver and the high degree finite elements we used. Section 2 and section 3 are respectively devoted to the numerical results for the one-dimensional and the two dimensional problem. We investigate the performance of our method through different quantitative and qualitative aspects of the Cahn-Hilliard equation: comparison to explicit profile-solution in 1D (see section 2), spinodal decomposition (see section 2), discussion about polynomial approximations of the logarithmic potential (see section 2), impact of the temperature and the parameter ε (see section 2 and 3), long-time behavior and asymptotic stable states (see section 3). The numerical results are compared with existing ones in the literature, validating our approach.

1 Discretization

1.1 Space-Time schemes

We start with the description of the time discretisation. Given a large integer N , a time step τ , and an initial data (w_0, u_0) , we denote by $(w_n, u_n)_{n \leq N}$ the sequence of approximations at uniformly spaced times $t_n = n\tau$. The backward Euler scheme is given by:

$$\begin{cases} \frac{u_{n+1} - u_n}{\tau} = \Delta w_{n+1}, \\ w_{n+1} = \psi(u_{n+1}) - \varepsilon^2 \Delta u_{n+1}. \end{cases} \quad (1.1)$$

A Crank-Nicolson scheme could easily be implemented but our experiences show that it gives results quite similar to the ones we shall show in the sequel. The schemes are immediately generalized to our case. We denote by $\langle \cdot, \cdot \rangle$ the scalar product in $L^2(\Omega)$. We use the standard Sobolev space $H^1(\Omega)$ equipped with the seminorm

$$|h|_1 = \|\nabla h\|_{L^2},$$

and with the norm

$$\|h\|_1 = (|h|_1^2 + \|h\|_{L^2}^2)^{1/2}.$$

The weak form of the equation (1.1) reads:

$$\begin{cases} \langle u_{n+1} - u_n, \chi \rangle = -\tau \langle \mathcal{M}(u_{n+1}) \nabla w_{n+1}, \nabla \chi \rangle, \text{ for all } \chi \in X_1, \\ \langle w_{n+1}, \xi \rangle = \langle \psi(u_{n+1}), \xi \rangle + \langle \varepsilon^2 \nabla u_{n+1}, \nabla \xi \rangle, \text{ for all } \xi \in X_2, \end{cases} \quad (1.2)$$

where X_1 and X_2 are the spaces of test functions ($H^1(\Omega)$ for example). We discretise in space by continuous finite elements. Given a polygonal domain Ω , for a small parameter $h > 0$, we partition Ω into a set \mathcal{T}^h of disjoint open elements K such that $h = \max_{K \in \mathcal{T}^h} (\text{diam}(K))$ and $\bigcup_{K \in \mathcal{T}^h} \bar{K} = \bar{\Omega}$.

Thus, we define the finite element space

$$V^h = \{ \chi \in \mathcal{C}(\bar{\Omega}) : \chi|_K \in \mathbb{P} \text{ for all } K \in \mathcal{T}^h \}, \quad (1.3)$$

where \mathbb{P} is a space of polynomial functions, see section 1.3. We denote by $(\varphi_j)_{j \in J}$ the standard basis of nodal functions. Thus, for u and $v \in \mathcal{C}(\bar{\Omega})$, we define the *lumped scalar product* by:

$$\langle u, v \rangle^h := \sum_{i,j} \langle u, \varphi_i \rangle \langle v, \varphi_j \rangle \langle \varphi_i, \varphi_j \rangle.$$

The scheme (1.2) can be rewritten in the fully discrete form, just by replacing the continuous scalar product with the lumped scalar product.

We denote $\mathbf{u} = (u_j)_{j \in J}$ and $\mathbf{w} = (w_j)_{j \in J}$, the finite dimensional representation of u and w (we omit here the subscript n of the time scheme). Then we define the matrices \mathbf{A} and \mathbf{M} , whose coefficients are given by the following relations:

$$\begin{aligned} [\mathbf{A}]_{ij} &:= \langle \nabla \varphi_i, \nabla \varphi_j \rangle, \quad \text{“stiffness” matrix, for all } i, j \in J, \\ [\mathbf{M}]_{ij} &:= \langle \varphi_i, \varphi_j \rangle, \quad \text{“mass” matrix, for all } i, j \in J. \end{aligned}$$

For each time-step, given a previous solution $(\mathbf{w}_n, \mathbf{u}_n)$, $(\mathbf{w}_{n+1}, \mathbf{u}_{n+1})$ is solution of the system

$$\begin{cases} \tau \mathbf{A} \mathbf{w}_{n+1} + \mathbf{M} \mathbf{u}_{n+1} &= \mathbf{M} \mathbf{u}_n, \\ \mathbf{M} \mathbf{w}_{n+1} - \varepsilon^2 \mathbf{A} \mathbf{u}_{n+1} - \mathbf{M} \Psi(\mathbf{u}_{n+1}) &= 0, \end{cases} \quad (1.4)$$

where Ψ is a pointwise operator (*related to* ψ), and with $(\mathbf{w}_0, \mathbf{u}_0)$ the finite dimensional representation of the initial data. The system (1.4) is clearly block-symmetric. The proof of the convergence of this scheme can be found in [3].

1.2 Nonlinear solver

At each time step, we use a Newton procedure to solve the implicit nonlinear system (1.4). For (1.4), we define the operator \mathbf{L} by:

$$\mathbf{L} = \begin{pmatrix} \tau \mathbf{A} & \mathbf{M} \\ \mathbf{M} & -\varepsilon^2 \mathbf{A} \end{pmatrix}.$$

Then denote by \mathbf{S} the matrix of the left hand side of the backward Euler scheme,

$$\mathbf{S} = \begin{pmatrix} 0 & \mathbf{M} \\ 0 & 0 \end{pmatrix}.$$

Denote also by \mathbf{G} the following operator:

$$G(\mathbf{w}, \mathbf{u}) := \begin{pmatrix} 0 \\ -\mathbf{M} \Psi(\mathbf{u}) \end{pmatrix}.$$

Finally denote by \mathbf{Y}_n the couple $(\mathbf{w}_n, \mathbf{u}_n)$ for each $n \leq N$. The backward Euler scheme at each time-step satisfies the following formula:

$$\mathbf{L} \mathbf{Y}_{n+1} + \mathbf{G}(\mathbf{Y}_{n+1}) - \mathbf{S} \mathbf{Y}_n = 0. \quad (1.5)$$

The Newton iterates $(\mathbf{Y}_n^k := (\mathbf{w}_n^k, \mathbf{u}_n^k))_{k \in \mathbb{N}}$ satisfy for each $n \leq N$

$$\begin{cases} \mathbf{Y}_n^0 &= \mathbf{Y}_n, \\ \mathbf{Y}_n^{k+1} &= \mathbf{Y}_n^k - [\mathbf{L} + D_{\mathbf{G}}(\mathbf{Y}_n^k)]^{-1} [(\mathbf{L} + \mathbf{G} - \mathbf{S})(\mathbf{Y}_n^k)], \text{ for all } k \in \mathbb{N}, \end{cases} \quad (1.6)$$

where $D_{\mathbf{G}}(\mathbf{Y}_n^k)$ is the differential of \mathbf{G} at point \mathbf{Y}_n^k . Actually, we stop the procedure at $k = k_n$ when the residual is small, and define $\mathbf{Y}_{n+1} := \mathbf{Y}_n^{k_n}$. System (1.6) is an implicit linear system for each Newton-step, handled with a biconjugate gradient method.

When the nonlinear term is logarithmic, we should deal with the singularities at ± 1 . However, in all our computations, the solution stays far from ± 1 so that no special care is needed. This is expected. Indeed, it is known that in the one dimensional case the solution satisfies an L^∞ bound which is strictly less than one (see [14]). The same result has not been proved in higher dimension but it is probably true.

A simple remark shows the mass conservation through the total scheme. Indeed, if we multiply the first component of the second equation in the system (1.6) by the vector $\mathbb{I} := (1, 1, \dots, 1)$ which belongs to V^h , we get for all $k \in \mathbb{N}$:

$$\mathbb{I} \mathbf{M} \mathbf{u}_n^k = \mathbb{I} \mathbf{M} \mathbf{u}_n.$$

1.3 Implementation with high degree finite elements

The finite element library MÉLINA [27] has the feature of providing lagrangian nodal elements with order up to 64 (the nodes may be chosen as the Gauss-Lobatto points to avoid Runge phenomenon for large degrees). It can thus be used as a p -version code – see [2] – or even to implement spectral methods – see [6]. In the following results, we use quadrangular elements for two-dimensional computations, with degree from 1 to 10. So we use the notation Q_i with $i \in \{1, 2, 3, 4, 5, 6, 7, 8, 9, 10\}$ to describe these elements. We justify this strategy by the fact that the expected solution is smooth but may present a thin interface ; since high degree polynomials are able to capture high frequencies they are well suited in such situations. Some comparisons are shown below between degree 1 on a refined mesh, and degree 10 on a coarse mesh, justifying the efficiency of the method (in both terms of accuracy and computational cost).

2 Cahn-Hilliard evolution. Polynomial approximation of the logarithm

The temperature plays a crucial role in the evolution of the solution. The function ψ defined in (0.8) depends on two values of the temperature T and T_c . When the temperature T is greater than the critical temperature T_c , the second derivative of ψ is non-negative, thus function ψ is convex and has only one minimum. We say that the function ψ has a single well profile. Thus the solution tends to this unique minimum and the alloy exists in a single homogeneous state.

But when the temperature T of the alloy is lowered under the critical temperature T_c , the function ψ changes from a single well into a double well (see Figure 1), and the solution rapidly separates into two phases of nearly homogeneous concentration. This phenomenon is referred to as *spinodal decomposition*. If the initial concentration belongs to the region where the energy density is concave, i.e. between the two *spinodal points* σ_- and σ_+ (see Figure 1), the homogeneous state becomes unstable.

The concentrations of the two regions composing the mixture after a short stabilization have value near the so called *binodal points* β_- and β_+ (see also Figure 1), defined by

$$f'(\beta_-) = f'(\beta_+) = \frac{f(\beta_+) - f(\beta_-)}{\beta_+ - \beta_-}, \quad \text{with } \beta_- < \beta_+. \quad (2.1)$$

If the free energy is symmetric, the binodal points are the minima of each well, but in a more general case they are on a double tangent line (see [35]).

The spinodal decomposition is represented in the first two graphs of Figure 2 or Figure 3.

In longer time, the separated regions evolve to reduce their interfacial energies. These diffuse interfaces are shortened in an effect resembling the surface tension on a sharp interface, as the material fronts move to reduce their own curvature (see [11] and [31]). Finally, the solution reaches an equilibrium the location and form of which depend on the total initial concentration (see [24]). Nevertheless this equilibrium is always a solution with an interface with minimal measure. On Figures 2 and 3, this phenomenon is observed on the last four graphs.

Figure 2 corresponds to an evolution under the classic quartic double-well potential (0.9) with non scaled coefficients, whereas Figure 3 corresponds to an evolution under the logarithmic potential (0.7). They are both simulated on a 12×12 mesh under Q_1 polynomial elements. The ε parameter is such that $\varepsilon^2 = 0.07$. We see that the evolutions are quite similar and lead to the same stationary state. On these two evolutions, we can compare the difference of the energies or the L^2 norm of the difference (see next paragraph). Note that the polynomial approximation of the logarithm does not change the qualitative behavior. The same patterns appear and the long time behavior is very similar. The only notable difference is that with the logarithmic nonlinearity, the dynamic is slower. This is particularly clear on the graphs (b). The spinodal decomposition is almost completed only for the polynomial. Similarly, on graphs (f), we see that at time $t = 1$, the logarithmic evolution has not reached equilibrium yet. We have observed this in all our tests.

The second evolution is often illustrated by the classical benchmark cross. It can be considered as a qualitative validation of the numerical methods. This long time behavior is illustrated in Figure 4. Starting from a cross-shaped initial condition, the interface first diffuses from the arbitrary

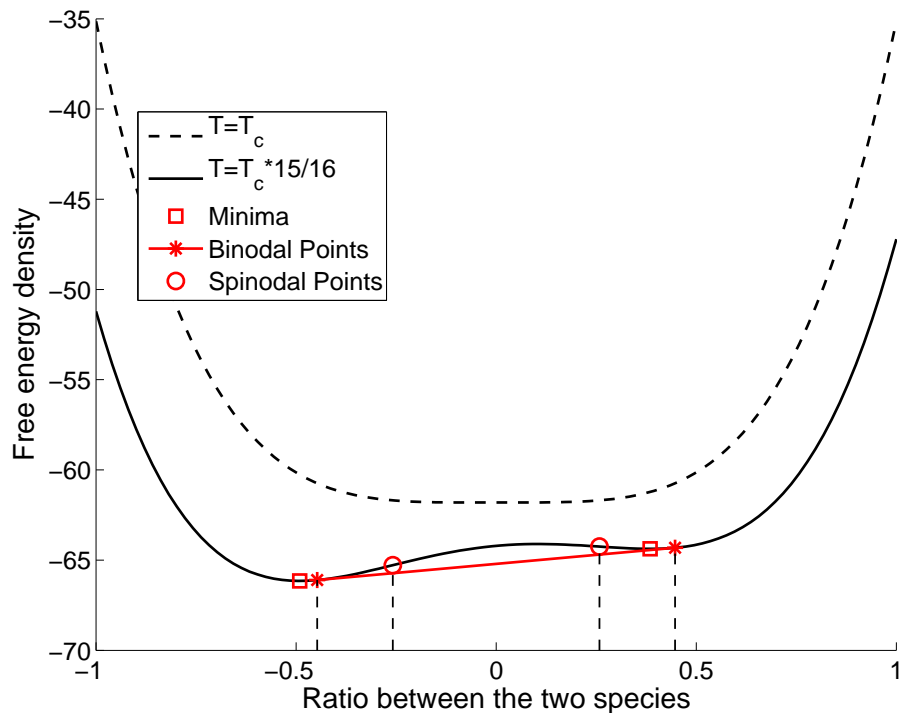


Figure 1: Free energy density for two different temperatures.

width of the initial condition to the equilibrium interface width. Next, the solution tries to reduce its interfacial energy and tends to a circular form. In the total free energy (0.3), the term with the free energy function f is responsible for the spinodal decomposition, whereas the gradient term is responsible for the interfacial reduction. This phenomenon has been simulated on a 256×256 mesh under Q_3 polynomial elements. Figures 4 (a), (b) are obtained with the quartic nonlinearity. We see on Figure 4 (c) and (d) that again the qualitative behavior is very similar with the logarithm.

It is difficult to measure precisely the qualitative difference between the two evolutions. The only physical quantity which can be measured in two dimensions is the energy. A detailed study of this aspect is performed below. Moreover in the one-dimensional case, we are able to measure the interface. We will see that the quartic nonlinearity tends to thicken the interface.

The replacement of the logarithmic free energy by the quartic one has been done by many authors in order to avoid numerical and theoretical difficulties raised by the singular values ± 1 . More generally, we can discuss the approximation of the logarithm by polynomial functions. We consider the $2n$ -th order polynomial Taylor expansion f_{2n} :

$$f_{2n} := u \mapsto \left(T_c \left(\frac{1-u^2}{2} \right) + T \left[-\ln(2) + \sum_{p=1}^n \frac{u^{2p}}{2p(2p-1)} \right] \right) + K_{2n}. \quad (2.2)$$

It is defined up to an additive constant K_{2n} . The constant K_{2n} is apparently arbitrary. However, it is preferable to choose it in order that the energy of a solution u

$$\mathcal{F}_{2n}(u) := \int_{\Omega} (f_{2n}(u) + \kappa |\nabla u|^2) dV \quad (2.3)$$

is well defined on unbounded domains. Since it is expected that the solution converges to one of the binodal values, it is natural to choose K_{2n} so that f_{2n} vanishes at those points. We always consider this choice.

We have seen above that the quartic approximation does not seem to change drastically the qualitative behaviour, except that the evolution is faster. We now perform a quantitative study to measure more precisely the effect of the polynomial approximation.

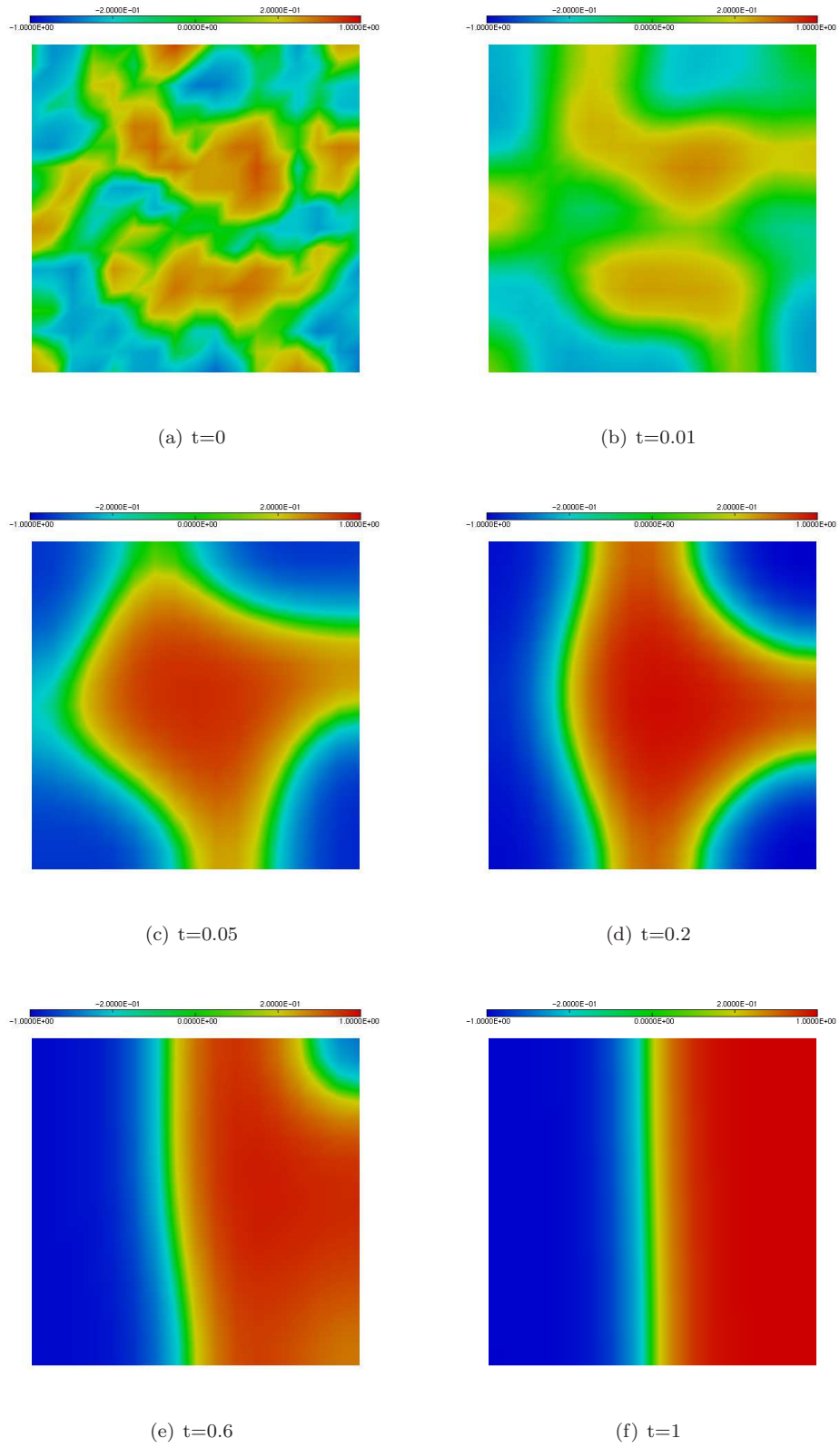
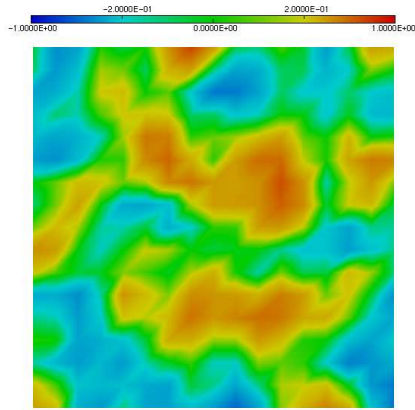
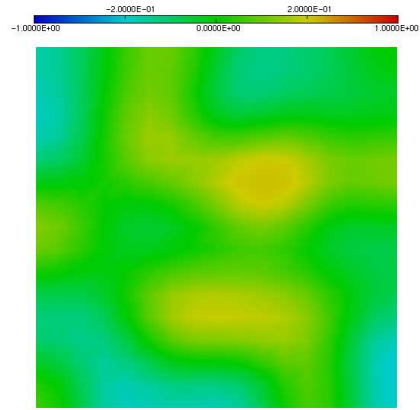


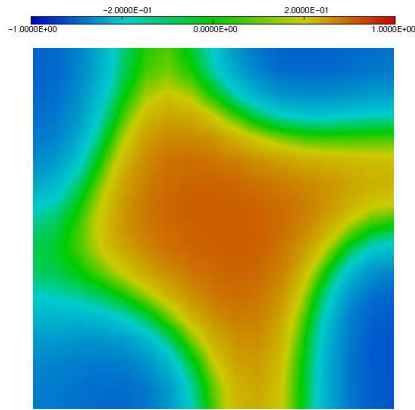
Figure 2: Spinodal decomposition under the classic quartic double-well potential.



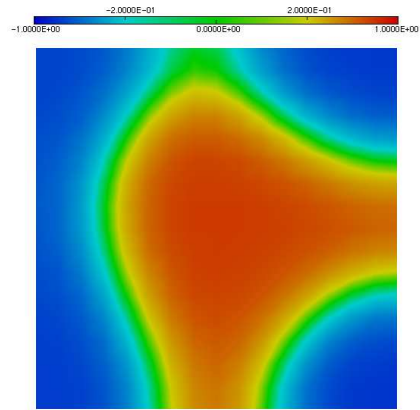
(a) $t=0$



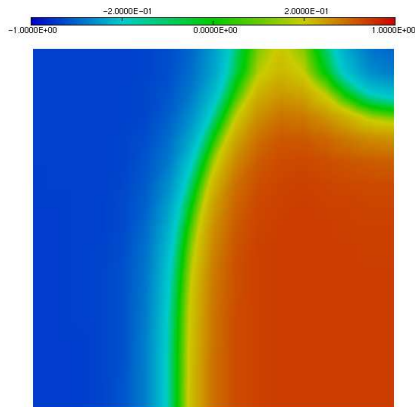
(b) $t=0.01$



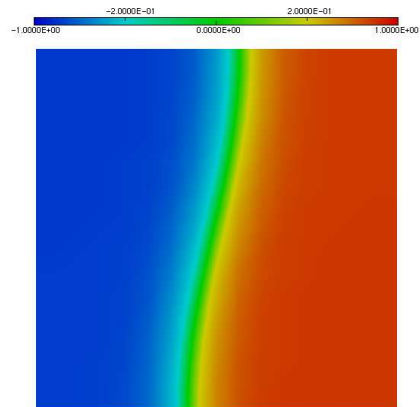
(c) $t=0.05$



(d) $t=0.2$

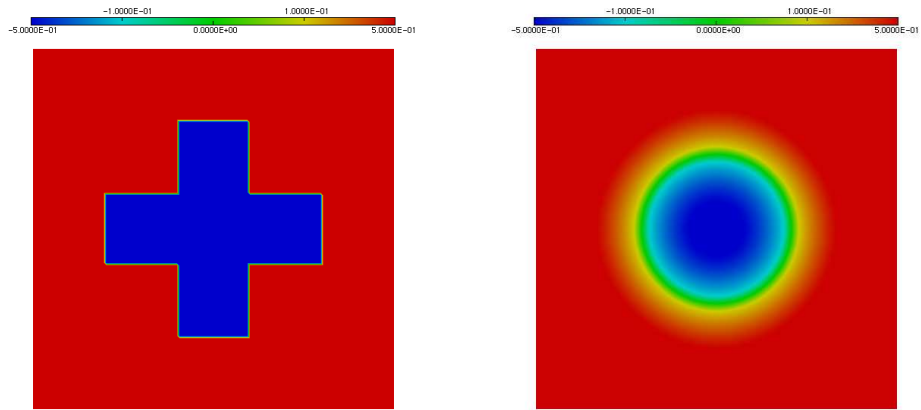


(e) $t=0.6$



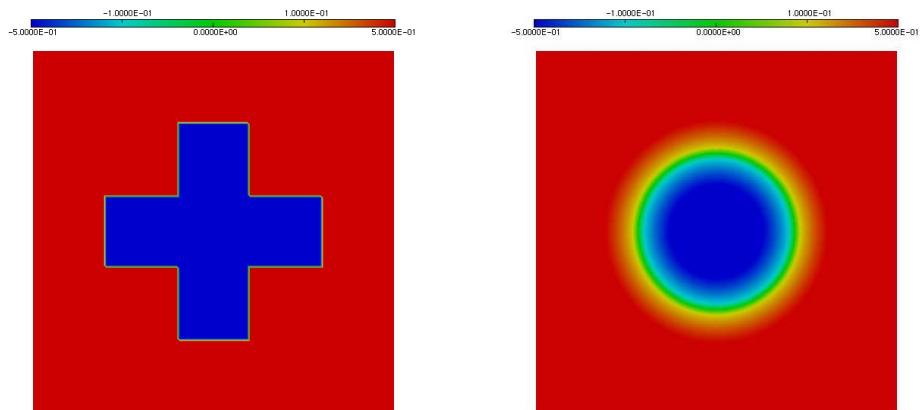
(f) $t=1$

Figure 3: Spinodal decomposition under a logarithmic potential.



(a) Quartic potential - $t=0$

(b) $t=1$



(c) Logarithmic potential - $t=0$

(d) $t=1$

Figure 4: Evolution of a cross-shaped initial condition to a bubble.

The spinodal and binodal points are drawn in Figure 5 for various n . When n increases, the spinodal and binodal points converge to the corresponding values for the logarithmic potential. However, the convergence is rather slow (see Figures 5 and 6).

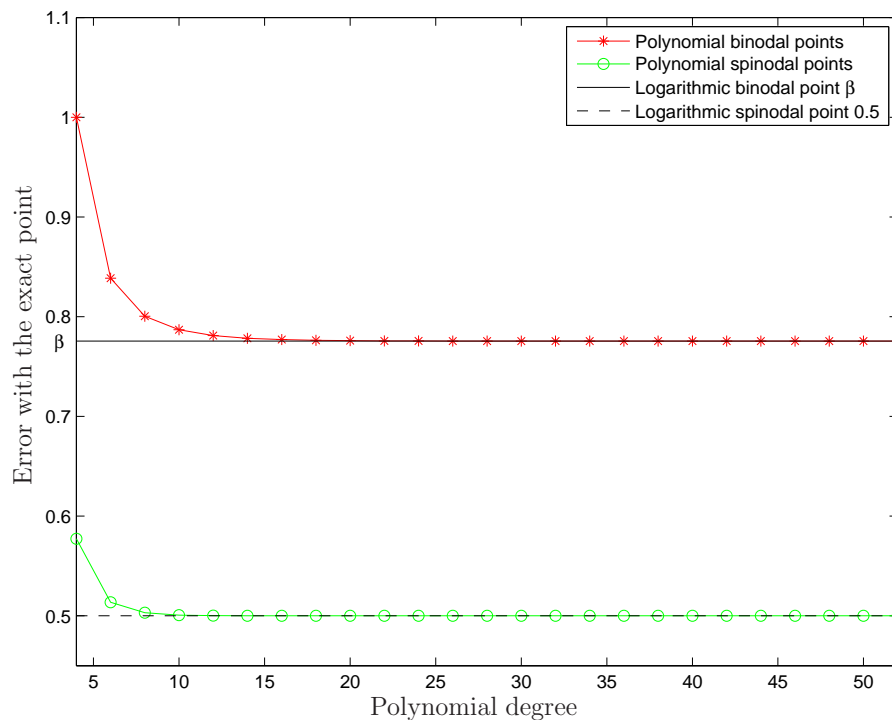


Figure 5: Polynomial and logarithmic spinodal and binodal points.

In the one-dimensional case, it is possible to study the thickness of the interface. Let us consider the domain $\Omega = \mathbb{R}$ and the quartic potential

$$\psi_4 := u \mapsto -T_c u + T \left(u + \frac{u^3}{3} \right), \quad (2.4)$$

which is the derivative of

$$f_4 := u \mapsto T_c \left(\frac{1-u^2}{2} \right) + T \left[\frac{u^2}{2} + \frac{u^4}{12} \right] + K_4. \quad (2.5)$$

Then a stationary solution of the Cahn-Hilliard equation (0.6) can be explicitly computed (under a constant mobility $\mathcal{M}(u) \equiv 1$), see [16]:

$$u : x \mapsto u_+ \tanh(x\mu), \quad (2.6)$$

where

$$u_+ = \sqrt{3 \left(\frac{T_c}{T} - 1 \right)} \quad \text{and} \quad \mu = \frac{\sqrt{T_c - T}}{\varepsilon \sqrt{2}}. \quad (2.7)$$

It is important to remark that the solution is constrained in $[-u_+, u_+]$. We can define a characteristic length ℓ (see Figure 7), corresponding to the width of the region containing the main variations of a solution u :

$$\ell := \frac{|\lim_{x \rightarrow +\infty} u(x)| + |\lim_{x \rightarrow -\infty} u(x)|}{\text{Slope in interface point}},$$

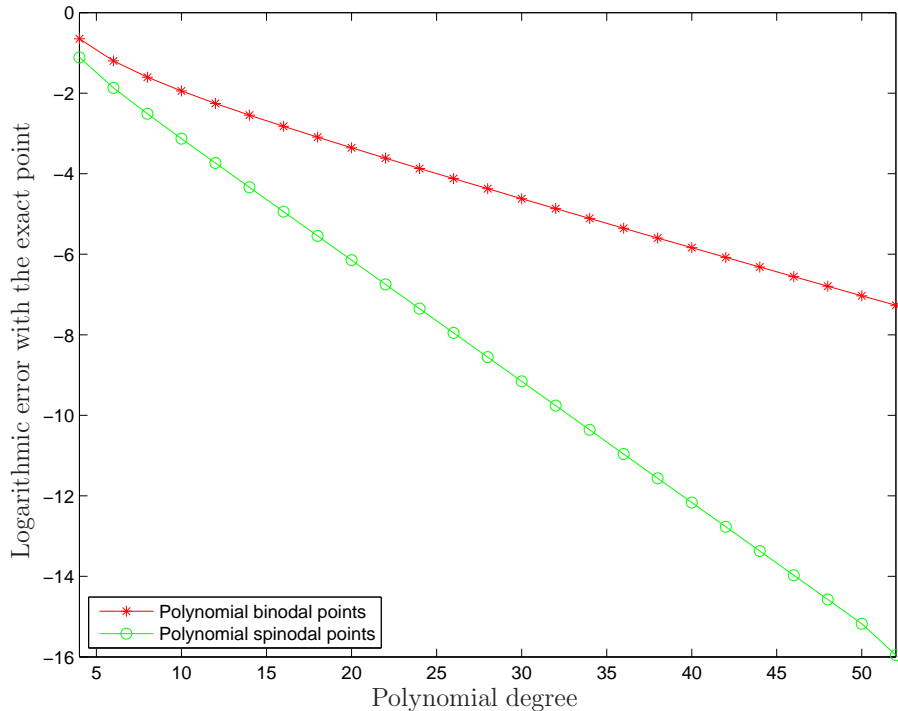


Figure 6: Rate of convergence of the polynomial points.

where the interface point is the point x_0 where $u(x_0) = 0$. Thus we can compute explicitly this length and obtain:

$$\ell = \frac{2u_+}{u_4'(0)} = \frac{2\varepsilon\sqrt{2}}{\sqrt{T_c - T}}. \quad (2.8)$$

Cahn and Hilliard have defined a parameter $\lambda := \frac{2\varepsilon\sqrt{2}}{\sqrt{T_c}}$ in order to characterize the interface length. With this parameter λ we obtain the following expression for ℓ :

$$\ell = \frac{\lambda}{\sqrt{1 - \frac{T}{T_c}}}. \quad (2.9)$$

Cahn and Hilliard have shown that in the case of the logarithmic free density the interface length is of the same order. This suggests that the quartic double well approximation preserves important features of the solution.

In Figure 8, we present the numerical solution for $\Omega = [0, 1]$ (blue stars), and the “tanh-profile” whose coefficients u_+ and μ have been fitted to the data. The fitting on u_+ corresponds to the value of the solution on the boundaries of the domain Ω . And the fitting on μ corresponds to a least square method between the numerical solution and a ”tanh-profile” solution interpolated on the same meshes. The “tanh-profile” (defined over \mathbb{R}) may be considered as a good approximation of the solution on $\Omega = [0, 1]$ since the interface is very thin. The numerical solution is computed with 35 Q_3 -elements.

However, we have measured numerically the interface width in the quartic and logarithmic cases. This width is plotted for various ε on Figure 9. We see that as expected by the formula (2.8), it varies linearly with ε . But, for ε not too small, the interface width is thinner for the logarithmic equation. The quartic approximation introduces a non negligible extra diffusivity.

We can also compare the total free energies. Denote by u the solution of a simulation with the *logarithmic* function f and by $(u_{2n})_{n \geq 2}$ the family of solutions of the simulations with the polynomial functions $(f_{2n})_{n \geq 2}$. For the energy, we take as reference the logarithmic total free

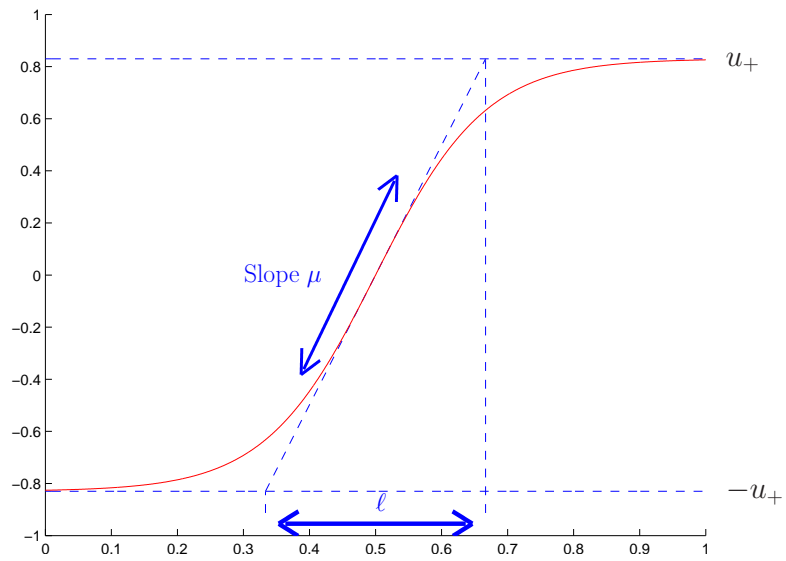


Figure 7: Interface length for the solution u_4 .

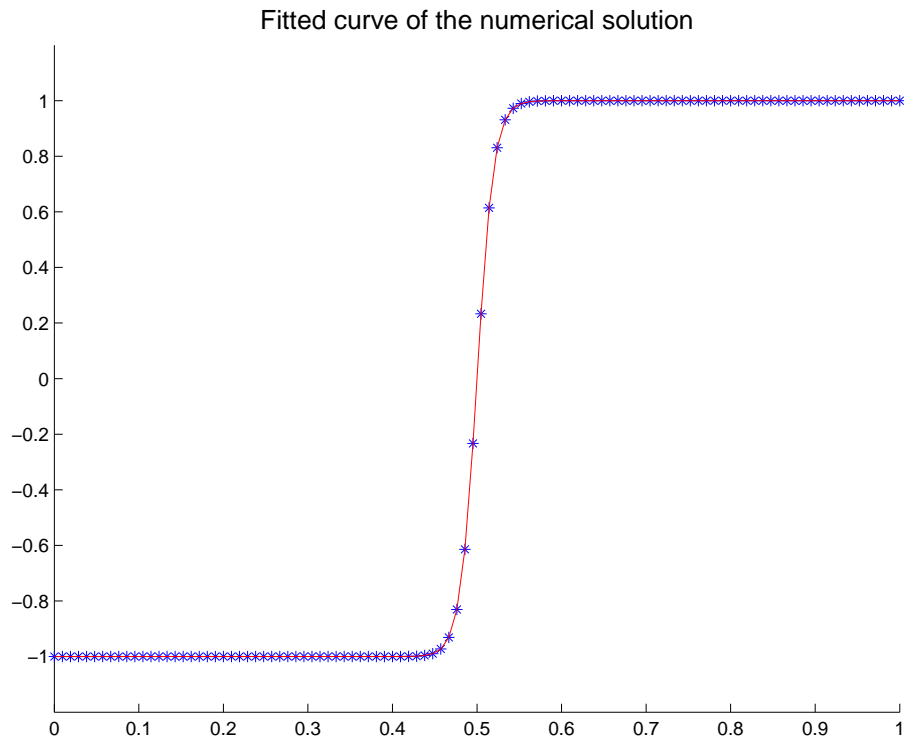


Figure 8: Fitted curve on the “tanh-profile”.

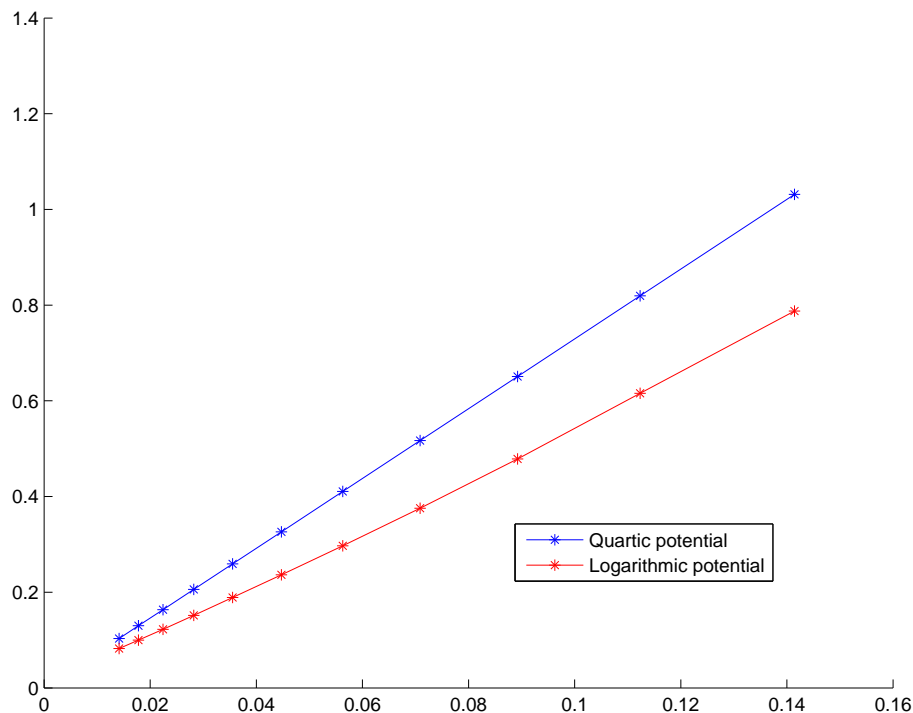


Figure 9: Length of the interface for the quartic and logarithmic potentials.

energy, and we study

$$|\mathcal{F}(u_{2n}) - \mathcal{F}(u)|. \quad (2.10)$$

On Figure 10, the evolution of the logarithm of this quantity is plotted during a classical spinodal decomposition in dimension one.

We can see important peaks at the beginning and smoother peaks between iterations 500 and 700. These peaks appear when the solution has a rapid evolution and when its topological form changes. For instance, these peaks correspond to the changes between the fourth and the fifth images of Figure 2, and between the fifth and the sixth images. After the iteration 750, all the solutions are in an asymptotic stable state, and the energies do not change anymore.

For a quartic potential ($n = 2$ i.e. f_4 in Figure 10), the energy error is significant and the polynomial approximation is not good in that respect.

We could as well have shown the evolution of

$$|\mathcal{F}_{2n}(u_{2n}) - \mathcal{F}(u)|$$

In fact, it is very similar and does not bring new information.

On a mathematical point of view, it is interesting to study the error in L^2 norm:

$$\left(\int_{\Omega} |u_{2n} - u|^2 dx \right)^{1/2}.$$

We see on Figure 11 that for $n = 2$, the error is important. It decreases with n but is still significant for $n = 3$. For $n \geq 6$, it is negligible.

Figures 12 and 13 present the same quantities for a two-dimensional spinodal decomposition. We observe the same quantitative difference. Note that we clearly see that the energy evolution slows down as the degree n grows.

We conclude that the classical quartic approximation of the free energy may be considered as a good approximation for qualitative behaviour but it produces a significant error and accelerates the dynamics. If precision is required, one should consider an approximation with a higher order polynomial.

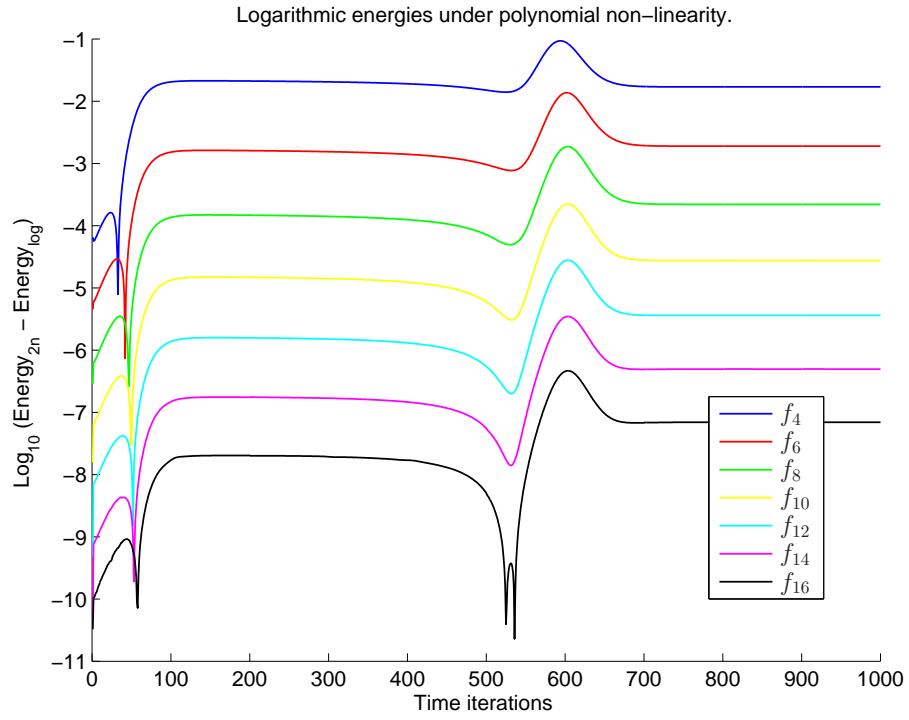


Figure 10: Polynomial energies versus logarithmic energy.

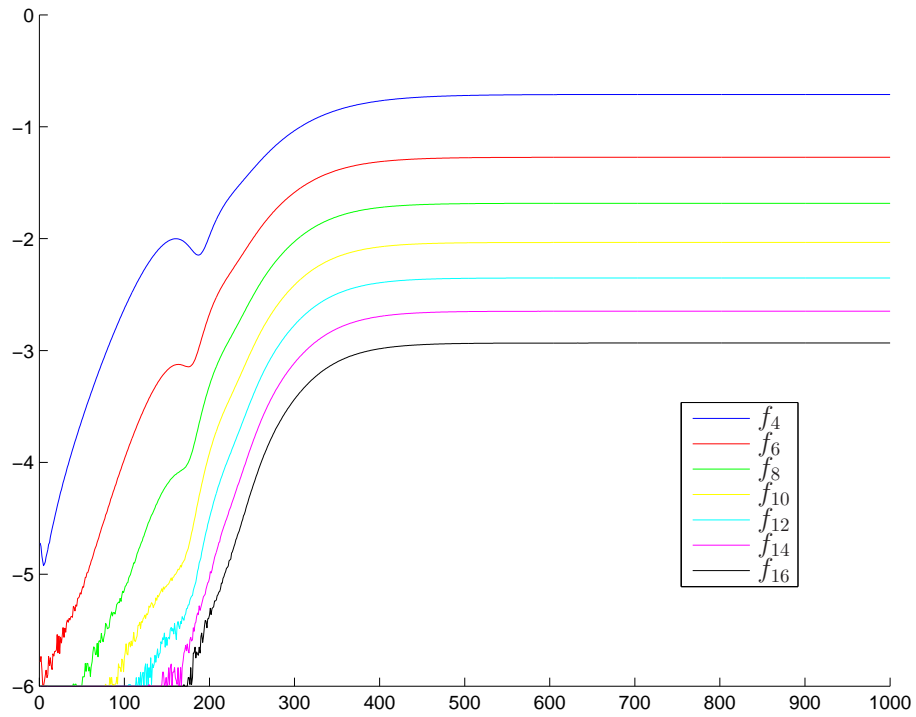


Figure 11: L^2 errors between the polynomial solutions and the logarithmic solution.

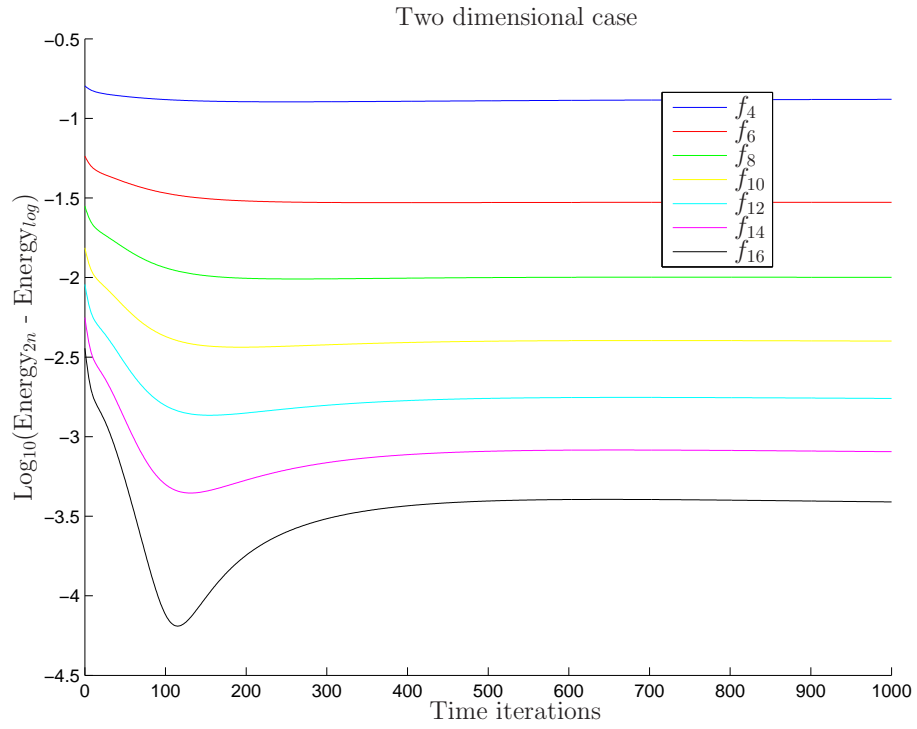


Figure 12: Polynomial energies versus logarithmic energy.

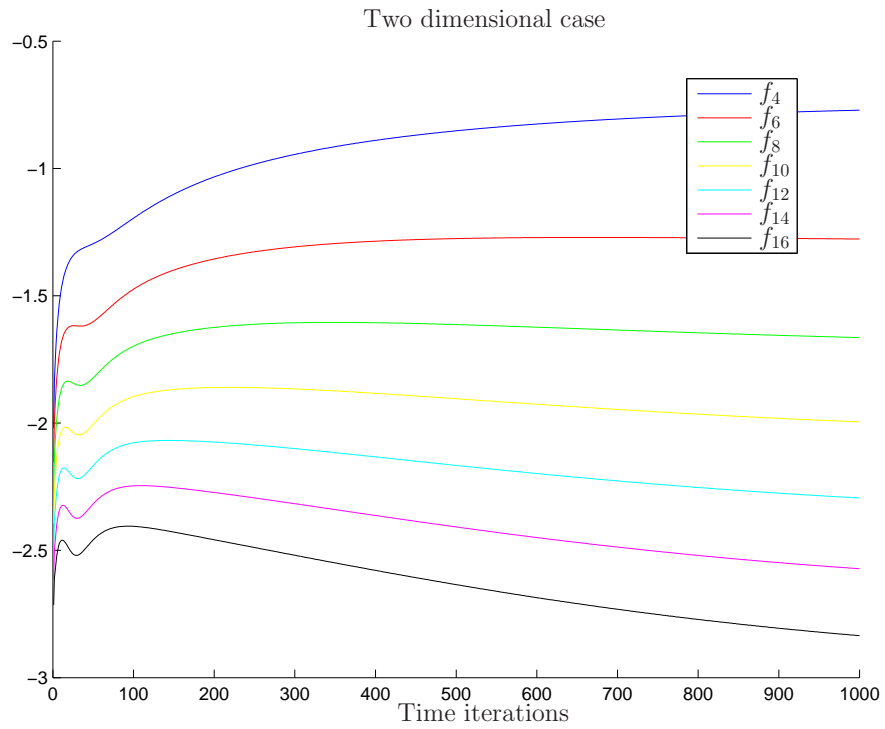


Figure 13: L^2 errors between the polynomial solutions and the logarithmic solution.

3 Validation of the numerical method. Choice of the degree of the elements

On Figure 14, we have drawn a numerical solution for different times. It is a Q_1 solution on a mesh with 100 elements under the quartic double-well potential. On figure 14(f), the solution has reached its stable state and has binodal values ± 1 on the boundary.

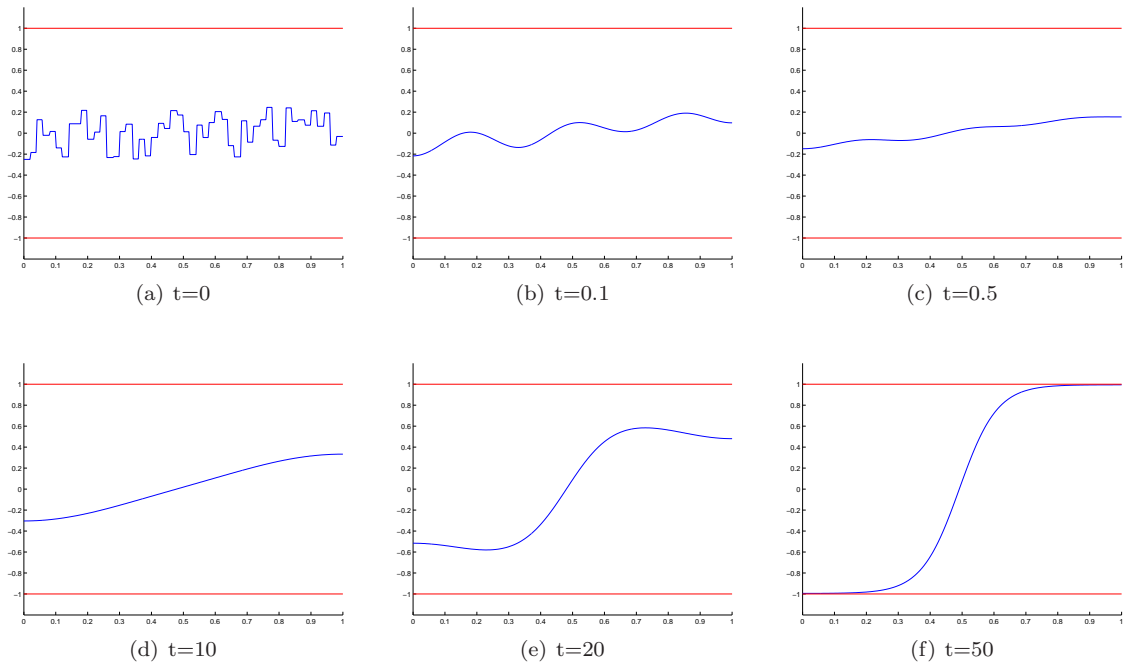


Figure 14: Q_1 solution on a mesh with 100 elements.

In our first set of tests, we start with the same initial state near the “tanh profile” solution. The evolutions are driven by the quartic potential function. We wait for the stabilization of all the solutions and study the error on the energies and on the slopes of the interface.

Remark that we can explicitly compute the energy of the explicit solution. And since the energy of a numerical simulation is decreasing in time, this energy should converge to the energy of the explicit solution. Figure 15 shows the evolutions of the errors between the numerical energies and the explicit energy according to the degree of the polynomial space \mathbb{P} . Before the 800th iteration in time, the solutions are not stable. They try to minimize their energies. After the 800th iteration, all the solutions are in a stable state. We can see that the evolutions are qualitatively similar at the beginning, but the elements Q_1 , Q_2 and Q_3 don’t achieve the tolerance zone, whereas the other elements do. However, Q_2 and Q_3 give a very good result.

The slope of the interface is an essential physical quantity. So we have compared the errors on the slopes between the numerical solutions and the theoretical solution. Note that these slopes correspond to the values of the derivatives of the numerical solutions at the interface and our finite elements have not a \mathcal{C}^1 regularity.

Under the quartic double-well potential (2.5), we have an explicit slope μ for the stationary solution. On Figure 16, we present the numerical solution for $\Omega = [0, 1]$ (blue stars), and the “tanh-profile” whose coefficients u_+ and μ have been fitted to the data. The fitting on u_+ corresponds to the value of the solution on the boundaries of the domain Ω . And the fitting on μ corresponds to a least square method between the numerical solution and a “tanh-profile” solution interpolated on the same meshes. The “tanh-profile” (defined over \mathbb{R}) may be considered as a good approximation of the solution on $\Omega = [0, 1]$ since the interface is very thin.

If we want to compare the solutions between a Q_1 simulation and a Q_{10} simulation, we need to compare the two simulations under a same complexity which, up to the inversions of the linear systems, corresponds to a similar computational cost. In the one dimensional case, the complexity

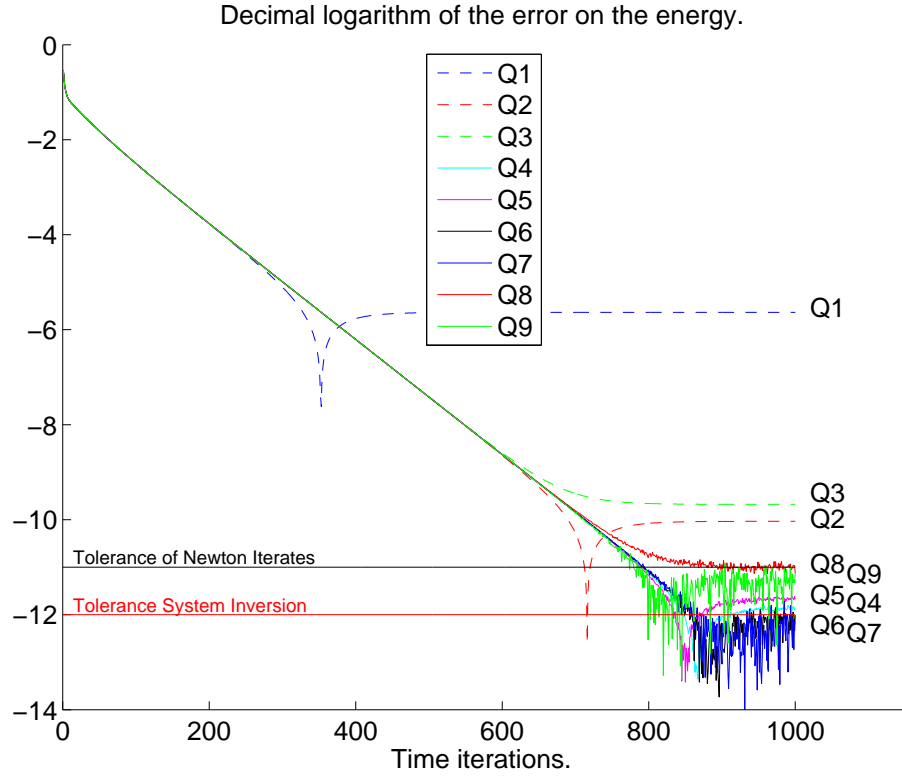


Figure 15: Energies during an evolution.

corresponds to the value $Degree \times Number\ of\ elements$. For a Q_{10} simulation, we only need a mesh with 10 times less elements than for a Q_1 simulation.

Figure 16 represents the numerical solution over mesh grids with three different complexities 18, 36 and 72, and under polynomial functions of degree 1, 2 and 3. For instance, for the elements Q_2 , it corresponds to the mesh grids with 9, 18 and 36 elements. If we increase the number of elements or the degree of the polynomial space \mathbb{P} , then we obtain a better approximation of the slope of the “tanh-profil” solution. But for the same complexity, the curves are qualitatively similar. Figures 17(a) and 17(b) show the evolution of this approximation error according to the complexity for Q_1 , Q_2 and Q_3 simulations. On Figure 17(b), we have used a logarithmic scale in order to compare the rate of the convergence.

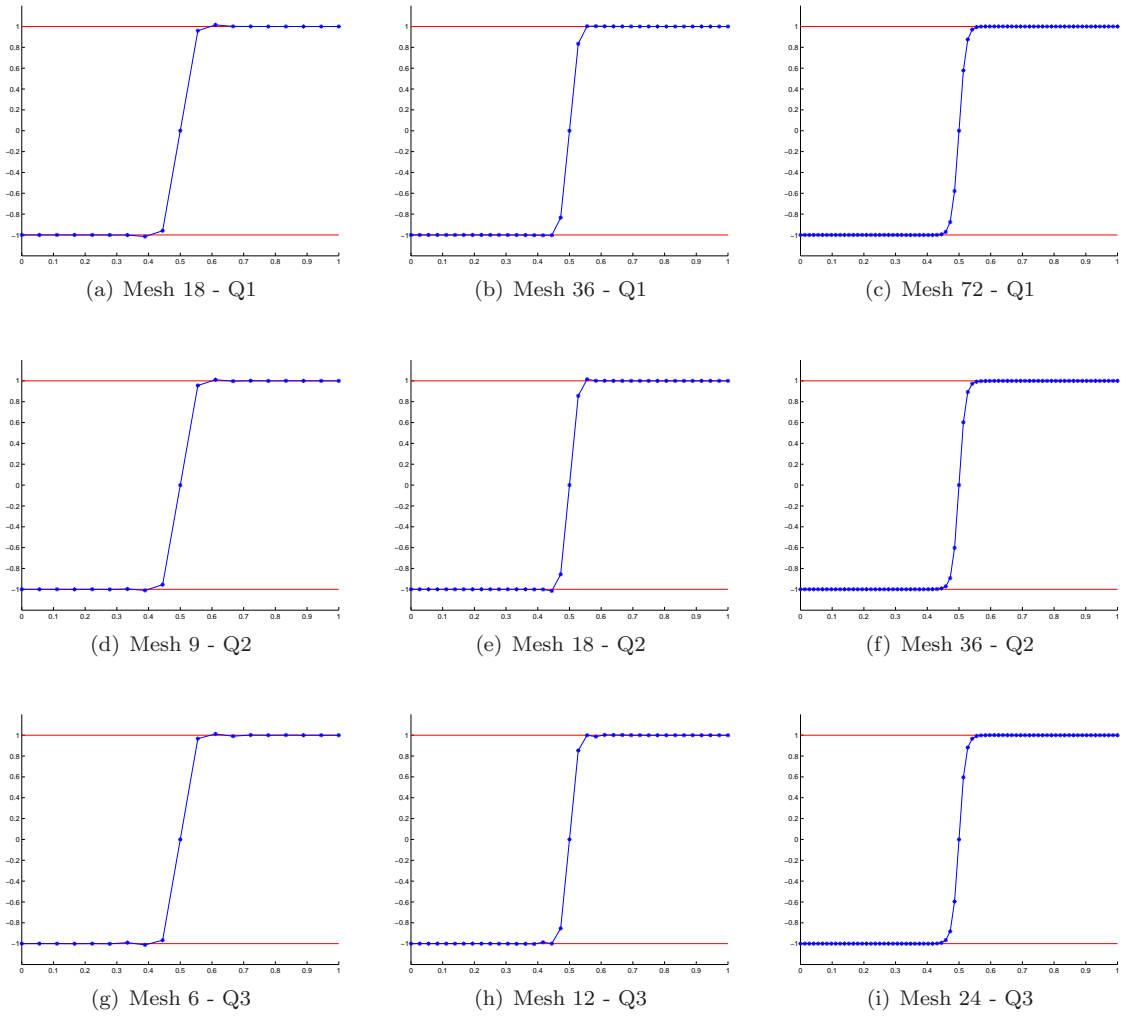


Figure 16: Fitted curves on the “tanh-profile”.

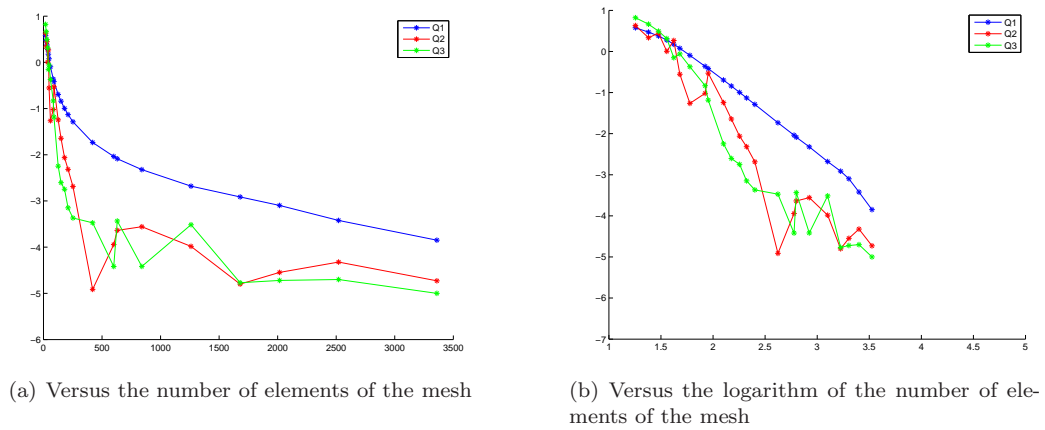


Figure 17: Comparison between the errors on the slope under the same complexity.

We obviously conclude that, for elements Q_1 , Q_2 or Q_3 , a fine mesh allows a better approximation. But the Q_2 and Q_3 elements seem to reach faster a saturation. They only need 500 elements in order to reach a 10^{-5} precision, whereas the Q_1 elements need 5000 elements ! Figure 17(b) highlights this better speed on the approximation error of the slope. But Q_2 and Q_3 elements seems to have a similar speed before reaching the saturation zone.

If we fix the complexity, we can test which degree of the polynomial space \mathbb{P} can provide the best speed. Figure 18 shows this approximation error according to the degree of the polynomial space \mathbb{P} under the same complexity - quantified by the number of degrees of freedom (DoF) of the finite elements space.

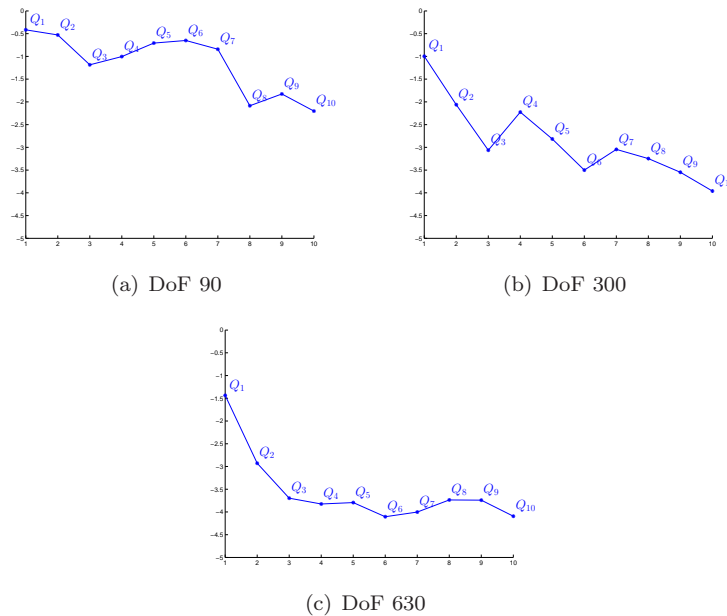


Figure 18: Error on the slope versus the degree of the polynomial space \mathbb{P} under the same complexity.

Under the same complexity, we see on Figure 18 that high degree elements still provide better approximations than Q_1 elements. Although very high degree elements always provide better approximations than low degree elements, the slopes on Figure 18(c) of the curves for low degrees suggest that Q_3 elements are a good choice. Higher elements increase the computation time for matrix inversion and the gain is not valuable.

Figure 19(a) shows the error on the energies according to the complexity under Q_1 , Q_2 , Q_3 and Q_4 elements. As for the slopes, we see that the error is decreasing as the number of elements of the mesh is increasing. Whereas the error reaches a 10^{-4} precision for the slopes before saturation, the error on the energy reaches the tolerance zone for Q_4 elements on a mesh with 500 elements. Figure 19(b) shows the logarithm of the error according to the logarithm of the complexity. We see that the evolution is linear for the finest meshes with a good speed. We conclude in particular that we can compute an order of the speed of the convergence. For Q_1 elements, we find an order 2, for Q_2 elements, we find an order 4, for Q_3 elements, we find an order 4 and for Q_4 elements, we find an order 6. Note that the error on the energies should be of the order as the H^1 error.

Now, we fix the complexity and compare the approximation error on the energy according to the degree of the polynomial space \mathbb{P} . For the complexities 90, 180, 300 and 630, we have drawn the decimal logarithm of the errors on Figure 20.

Again, under a same complexity, if we increase the degree of the polynomial space \mathbb{P} , the high degrees can provide better approximation, except on the coarse grids. We can conclude that for a fixed mesh (fine enough), high degrees provide a better approximation. But for each complexity, it seems that we have a saturation because the Q_6 , Q_7 , Q_8 , Q_9 and Q_{10} elements have almost the same errors. We conclude that we have to use elements with high degrees, but it is not necessary

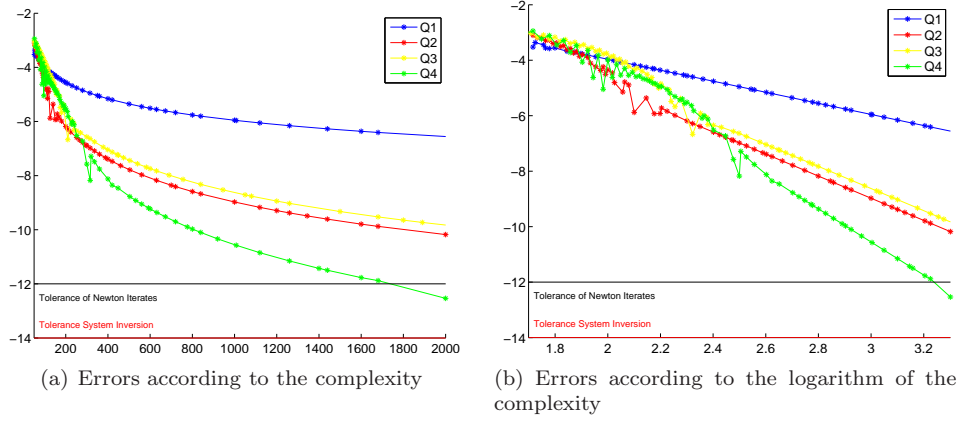


Figure 19: Errors according to the logarithm of the complexity

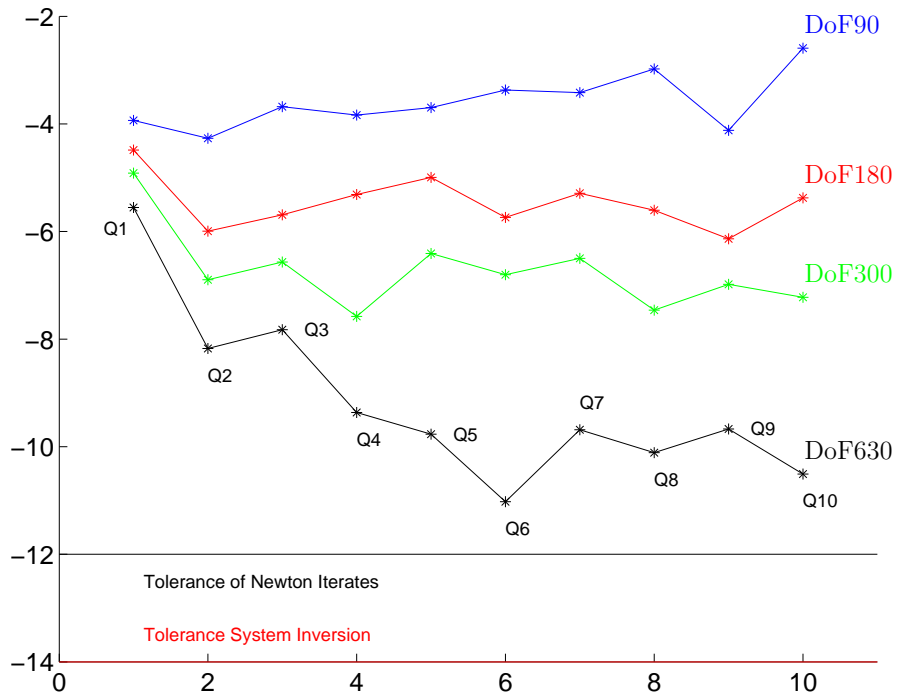


Figure 20: Errors on the energy according to the logarithm of the complexity

to choose the highest. We have to take into account the computational cost, and the precision of our inverse solver. Indeed, even if the complexity is the same, the finite elements matrices have not the same profil. For instance, the bandwidth of the “mass” matrix for Q_{10} elements is much larger than for Q_1 elements. Figures 19 and 20 indicate that Q_2 and Q_3 elements are a good compromise to ensure good results without increasing the computational cost too much.

In the two dimensional case, the results are drawn on Figure 21. The behaviour is similar.

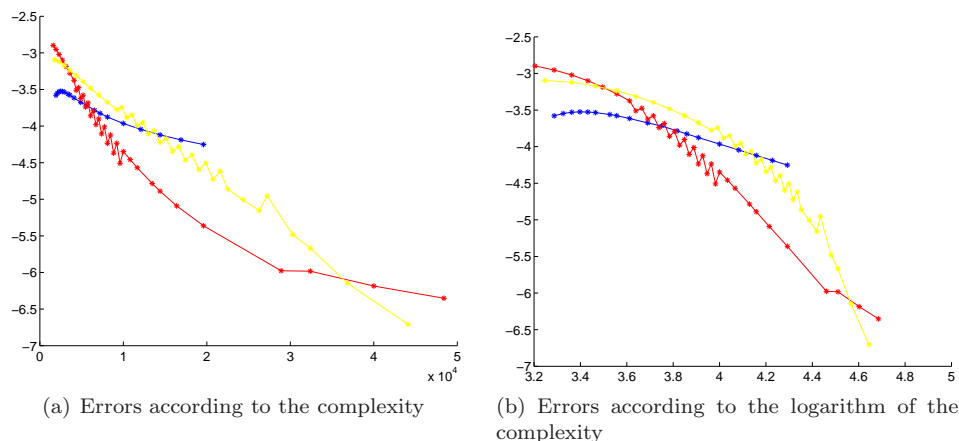


Figure 21: Errors on the energy according to the logarithm of the complexity

The energy and the interface are essential physical quantities. From a mathematical point of view, it is also important to study the L^2 error.

Figures 22(a) and 22(b) show the L^2 error according to the complexity for Q_1, Q_2, Q_3, Q_4 and Q_5 elements. On Figure 22(b), we have used a logarithmic scale in order to compare the convergence rate. We have computed the order of the speed of the convergence. If we extrapolate

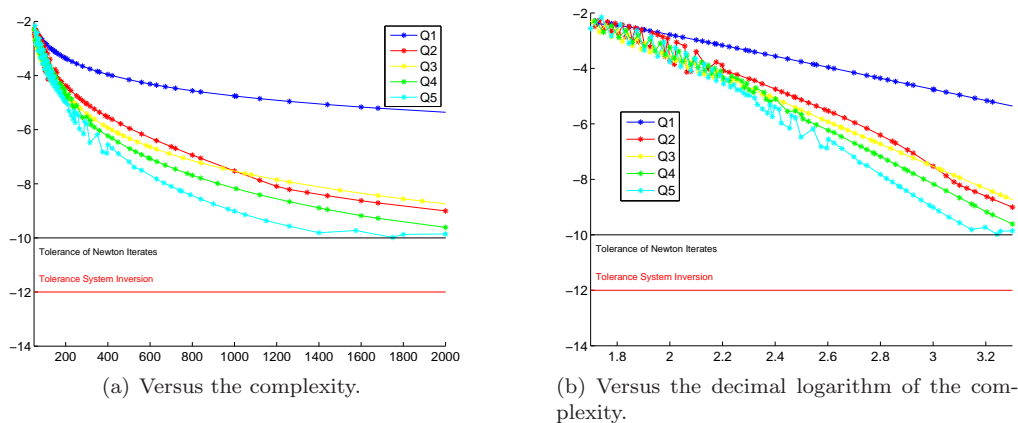


Figure 22: Comparison between the L^2 errors under the same complexity.

the lines, we can find the necessary complexity in order to reach the saturation.

Degrees	Order	Complexity for saturation	Grid for saturation
1	1.9960	423829	423829
2	3.9682	3558	1779
3	4.0216	4110	1370
4	4.9119	2364	591
5	5.9040	1475	295

Again, Q_2 and Q_3 elements give very good results for a reasonable computational cost. We have

decided to prefer Q_3 elements because it seems that they provide better results on the interface length as shown on Figure 18.

4 Stationary states

The Cahn-Hilliard equation has a lot of asymptotic equilibria (see [18], [29] and [30]). In the one dimensional case, a state can be described by the number of interfaces and their positions. On Figure 23, we show four states which are numerically stable. It is possible to observe more than one interface only for small ε . Only when the interface is very thin - *i.e.* for small ε , the interfaces do not interact. Note that the energy increases with the number of the interfaces.

In fact, this is a bifurcation phenomenon. When ε crosses critical values, bifurcations happen and more stationary solutions appear.

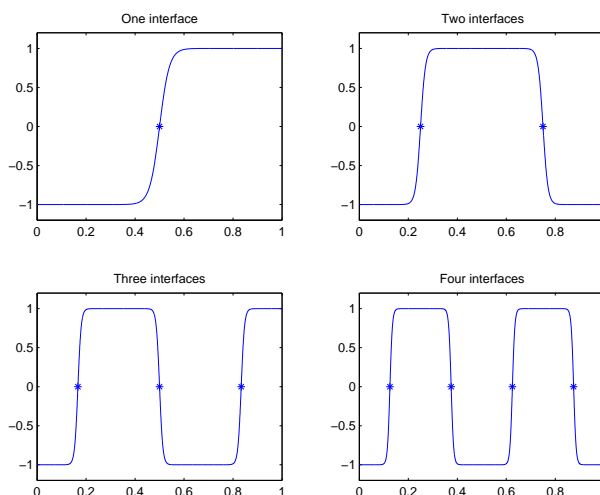


Figure 23: Four numerically stable states.

In [24], the authors consider the stationary states of (0.6) on the square. They numerically study the solutions of the following semi-linear elliptic equation.

$$\begin{cases} c = u - u^3 + \varepsilon^2 \Delta u, & \text{on } \Omega, \\ \nabla u \cdot \nu = 0, & \text{on } \partial\Omega, \end{cases} \quad (4.1)$$

together with the mass constraint:

$$\frac{1}{|\Omega|} \int_{\Omega} u(x) dx = m, \quad (4.2)$$

where $\Omega = [0, 1]^2$ is the square, $c \in \mathbb{R}$ and $m \in \mathbb{R}$ are parameters. They study stationary solutions under the three-dimensional parameter space $(c, m, 1/\varepsilon^2)$. For this system and for all ε , a trivial solution is given by the constant solution $u \equiv m$ with $c = m - m^3$. The linearization around $u \equiv m$ of (4.1) under the mass constraint reads

$$\begin{cases} 0 = (1 - 3m^2) u + \varepsilon^2 \Delta u, & \text{on } \Omega, \\ \nabla u \cdot \nu = 0, & \text{on } \partial\Omega. \end{cases} \quad (4.3)$$

Let v_r be an eigenfunction of the Laplace-Neumann operator in Ω defined in (4.6) with eigenvalue $r \in \mathbb{R}^+$, then v_r is also an eigenfunction of (4.3) when

$$\frac{1}{\varepsilon^2} = \frac{r}{1 - 3m^2} \text{ for } |m| < \frac{1}{\sqrt{3}}. \quad (4.4)$$

But $\sigma_+ = 1/\sqrt{3}$ for the quartic double-well potential, so this equality shows that bifurcations may occur only for m in the spinodal region. For the square domain $\Omega = [0, 1]^2$, the eigenfunctions are:

$$v_r(x, y) = v_{k,l}(x, y) := \cos(\pi kx) \cos(\pi ly) \quad \text{for } (x, y) \in [0, 1]^2, \quad (4.5)$$

with $(k, l) \in \mathbb{N}^2$ such that $r = (k^2 + l^2)\pi^2$. For the mode $v_{1,1}$ (i.e. $r = 2\pi^2$), we obtain non-trivial solutions bifurcating at $u \equiv \pm m^*$ with $m^* = \sqrt{(1 - \varepsilon^2 r)/3}$. We fix $m = 0$, such that the bifurcations occur as $1 = \varepsilon^2 r$.

The previous asymptotic equilibria – described in [24] – are asymptotic solutions of the dynamical evolution. For instance, we have obtained the $v_{1,1}$ mode as a stationary solution of a dynamical evolution (See Figure 24(c)). A random start may lead to different modes, and actually we only see the most stable of them in long time. Figures 24(a) and 24(b) show the stable states that we see most of the time.

All the symmetrical states are also stable. In [23], the authors have studied the global attractor on a square and they have proved that, after the first bifurcation, there exist 4 minimal attractors (see Theorem 4.2 in [23]) obtained by symmetrization of Figure 24(a). The other stable states shown here appear after subsequent bifurcations. Starting the simulation with well chosen initial data, we have been able to recover dynamically all the stable states described in [24]. If we choose the mode $v_{4,1} + v_{1,4}$ (which is the last mode studied by Maier-Paape and Miller), we see on Figure 24(d) the asymptotic equilibria that we have obtained.

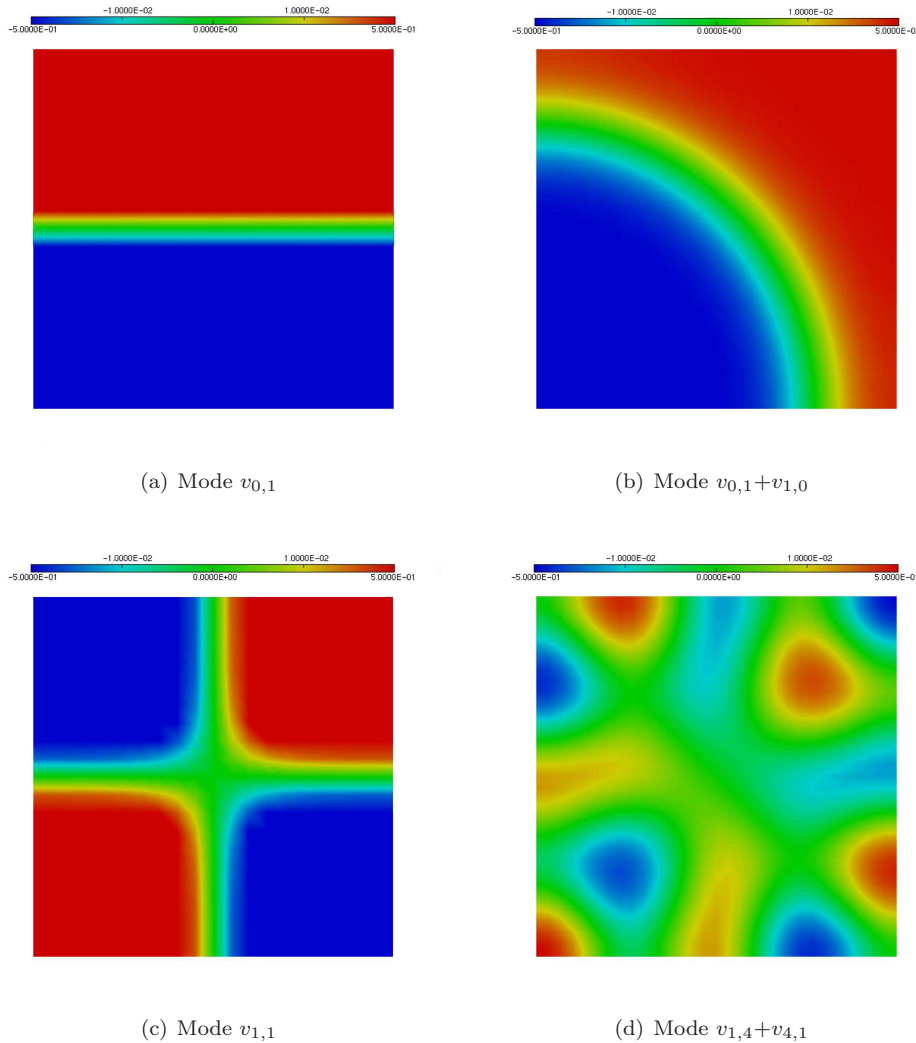


Figure 24: Asymptotic equilibria in the Maier-Paape-Miller nomenclature.

In general, the stable states are deeply dependent on the eigenvalues of the Laplace operator on Ω . Let $(\rho_k)_{k \in \mathbb{N}}$ and $(v_{\rho_k})_{k \in \mathbb{N}}$ be the eigenvalues and eigenvectors of the following problem:

$$\begin{cases} -\Delta v_{\rho_k} = \rho_k v_{\rho_k}, & \text{on } \Omega \subset \mathbb{R}^n, \\ \nabla v_{\rho_k} \cdot \nu = 0, & \text{on } \partial\Omega, \\ \int_{\Omega} v_{\rho_k}(\theta) d\theta = 0. \end{cases} \quad (4.6)$$

In [23], the authors have studied the bifurcations and the global attractors of the Cahn-Hilliard problem. In their nomenclature, they consider the following Cahn-Hilliard equation:

$$\begin{cases} \partial_t v = \Delta w, & \text{on } \Omega \subset \mathbb{R}^n, \\ w = -\lambda v + \gamma_2 v^2 + \gamma_3 v^3 - \Delta v, & \text{on } \Omega \subset \mathbb{R}^n, \\ \nabla v \cdot \nu = 0 = \nabla w \cdot \nu, & \text{on } \partial\Omega, \end{cases} \quad (4.7)$$

where λ , γ_2 and γ_3 are parameters. If u is a solution of the system (0.6) on Ω , then v is a solution on $\Omega/\sqrt{\varepsilon}$ of (4.7) if we define for all $t \in \mathbb{R}$ and $x \in \Omega$:

$$v : (t, x) \mapsto u(t, x\sqrt{\varepsilon}). \quad (4.8)$$

and the correspondence is given by the following equalities.

$$\lambda := \frac{1}{\varepsilon}, \quad \gamma_2 := 0 \text{ and } \gamma_3 := \frac{1}{\varepsilon}. \quad (4.9)$$

They prove that the first bifurcation occurs as their parameter λ is greater than a particular value. For our problem, this bifurcation occurs as $\frac{1}{\varepsilon^2} > \rho_1$.

Below, we study this first bifurcation and illustrate theoretical results of [23].

4.1 Asymptotic stable states on a rectangle

In the case of a rectangular domain $\Omega = [0, 2] \times [0, 1]$, the hypothesis of the Theorem 4.1 in [23] holds. Accordingly, if $\frac{1}{\varepsilon^2} > \rho_1 := \frac{\pi^2}{4}$ then there exist exactly two attractors $\pm u_\varepsilon$ which can be expressed as

$$\pm u_\varepsilon(x, y) = \pm \frac{2\varepsilon}{\sqrt{3}} \sqrt{\frac{1}{\varepsilon^2} - \frac{\pi^2}{4}} \cos\left(\frac{\pi x}{2}\right) + \sqrt{\varepsilon} o\left(\left|\frac{1}{\varepsilon^2} - \frac{\pi^2}{4}\right|^{1/2}\right), \quad x \in [0, 2], y \in [0, 1]. \quad (4.10)$$

We define the approximated attractors $\pm v_\varepsilon$ by

$$\pm v_\varepsilon(x) := \pm C(\varepsilon) \sqrt{\frac{1}{\varepsilon^2} - \frac{\pi^2}{4}} \cos\left(\frac{\pi x}{2}\right), \quad x \in [0, 2], y \in [0, 1],$$

where $C(\varepsilon)$ is a constant depending on ε . It is chosen in order to minimize the L^2 norm of $u'_\varepsilon - v_\varepsilon$.

For multiple values of the parameter ε around the value $\frac{2}{\pi}$, we have obtained the corresponding numerical stationary states u'_ε .

We have checked numerically the validity of formula (4.10). We study the following quantity

$$\frac{\|u'_\varepsilon - v_\varepsilon\|_2}{\|v_\varepsilon\|_2} = \frac{\|u'_\varepsilon - v_\varepsilon\|_2}{C(\varepsilon) \sqrt{\left(\frac{1}{\varepsilon^2} - \frac{\pi^2}{4}\right)}}.$$

This relative L^2 norm should converge to zero. On Figure 25, we have plotted the decimal logarithm of this relative L^2 norm according to the decimal logarithm of $\frac{1}{\varepsilon^2} - \frac{\pi^2}{4}$. Figure 25 is in conformity

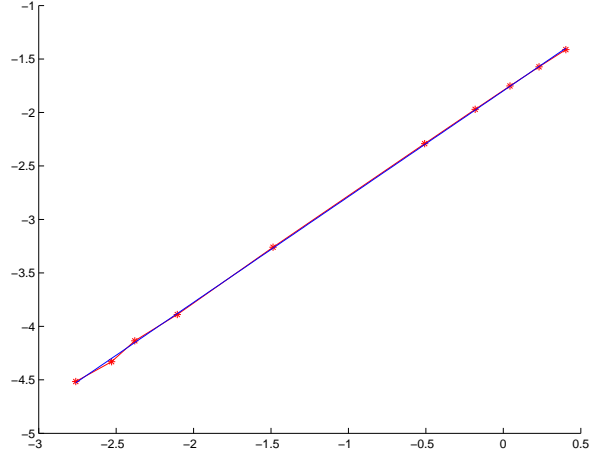


Figure 25: Convergence of the “bifurcationned” solutions on a rectangular domain.

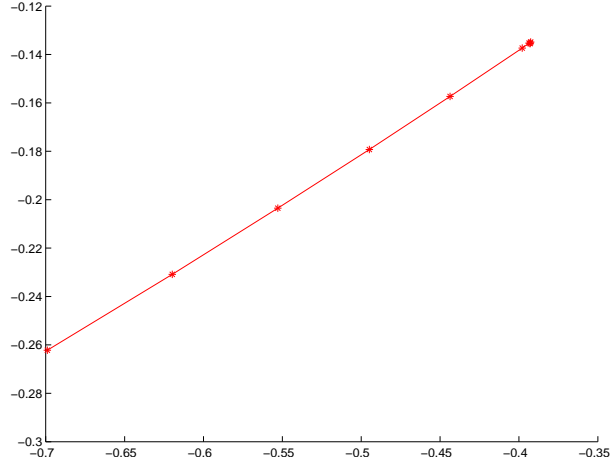


Figure 26: Order of convergence of the minimal constant $C(\varepsilon)$.

with the expecting theoretical results. We can see that the relative L^2 error converges to 0 as $\frac{1}{\varepsilon^2}$ converges to $\frac{\pi^2}{4}$. We even can improve formula (4.10) and find the exponent $\alpha_{\text{rectangular}}$ such that

$$\|u'_\varepsilon - v_\varepsilon\|_2 \sim \tilde{C} \left| \frac{1}{\varepsilon^2} - \frac{\pi^2}{4} \right|^{\alpha_{\text{rectangular}}}$$

where \tilde{C} is an unknown constant. We find that the exponent $\alpha_{\text{rectangular}} = 1/2 + 0.98908$, almost $3/2$. Moreover, since we know explicitly the attractor, we can verify that our minimal constant $C(\varepsilon)$ is near $\frac{2\varepsilon}{\sqrt{3}}$. On Figure 26, we have drawn the logarithm of our minimal constant $C(\varepsilon)$ according to the logarithm of ε .

We find

$$C(\varepsilon) \sim 1.0682 * \varepsilon^{0.83603} \tag{4.11}$$

this is in conformity with the fact that $C(\varepsilon)$ converges to $\lim_{\varepsilon \rightarrow \frac{2}{\pi}} \frac{2\varepsilon}{\sqrt{3}} = \frac{4}{\pi\sqrt{3}}$.

The segment may be seen as a degenerate rectangle. On the segment $[0, 1]$, the eigenvalues of (4.6) are $\rho_k := k^2\pi^2$ for all $k \in \mathbb{N}$. According to Theorem 4.2 in [23], there is a bifurcation at

$\frac{1}{\varepsilon^2} > \pi^2$. Moreover, Remark 4.2 in [23] states that there exist two minimal attractors $\pm u_\varepsilon$ which can be expressed as

$$\pm u_\varepsilon(x) = \pm C(\varepsilon) \sqrt{\left(\frac{1}{\varepsilon^2} - \pi^2\right)} \cos(\pi x) + \sqrt{\varepsilon} o\left(\left|\frac{1}{\varepsilon^2} - \pi^2\right|^{1/2}\right), \quad x \in [0, 1], \quad (4.12)$$

where $C(\varepsilon)$ is a constant which can depend on ε . Again, we define the approximated attractors $\pm v_\varepsilon$ by

$$\pm v_\varepsilon(x) := \pm C(\varepsilon) \sqrt{\left(\frac{1}{\varepsilon^2} - \pi^2\right)} \cos(\pi x), \quad x \in [0, 1].$$

For multiple values of the parameter ε around the value $\frac{1}{\pi}$, we have obtained the corresponding numerical stationary states u'_ε . We choose the constant $C(\varepsilon)$ in order to minimize the L^2 norm of $u'_\varepsilon - v_\varepsilon$ and study the convergence of u'_ε to v_ε using the quantity

$$\frac{\|u'_\varepsilon - v_\varepsilon\|_2}{\|v_\varepsilon\|_2} = \frac{2\|u'_\varepsilon - v_\varepsilon\|_2}{C(\varepsilon) \sqrt{\left(\frac{1}{\varepsilon^2} - \pi^2\right)}}.$$

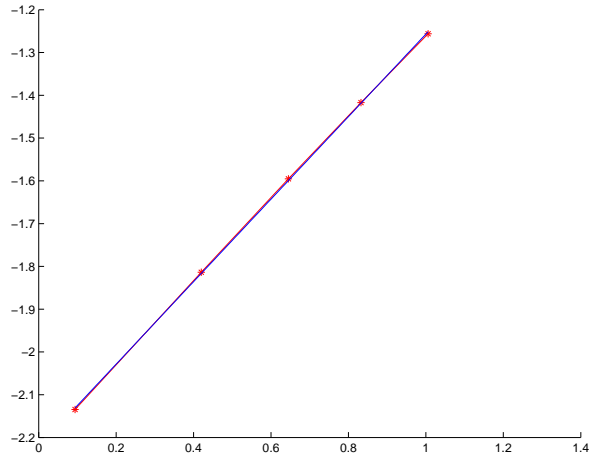


Figure 27: Convergence of the “bifurcationned” solutions on a segment.

Figure 27 is in conformity with the expected theoretical results. We can see that the relative L^2 error converges to 0 as $\frac{1}{\varepsilon^2}$ converges to π^2 and find the exponent $\alpha_{segment}$ such that

$$\|u'_\varepsilon - v_\varepsilon\|_2 \sim \tilde{C} \left| \frac{1}{\varepsilon^2} - \pi^2 \right|^{\alpha_{segment}}$$

where \tilde{C} is an unknown constant. We have found $\alpha_{segment} = 1/2 + 1.0254$, again almost $3/2$.

We have said that the constants $C(\varepsilon)$ have been numerically chosen in order to minimize the L^2 norm of $u'_\varepsilon - v_\varepsilon$. If we extend the results of [23], we expect that the constant $C(\varepsilon) \sim \frac{2}{\sqrt{3}}\varepsilon$. Thus, on Figure 28, we have drawn the logarithm of our minimal constant $C(\varepsilon)$ according to the logarithm of ε . If we study the slope, we find

$$C(\varepsilon) \sim 1.0844 * \varepsilon^{0.94594} \quad (4.13)$$

which is again in conformity with the theoretical formula.

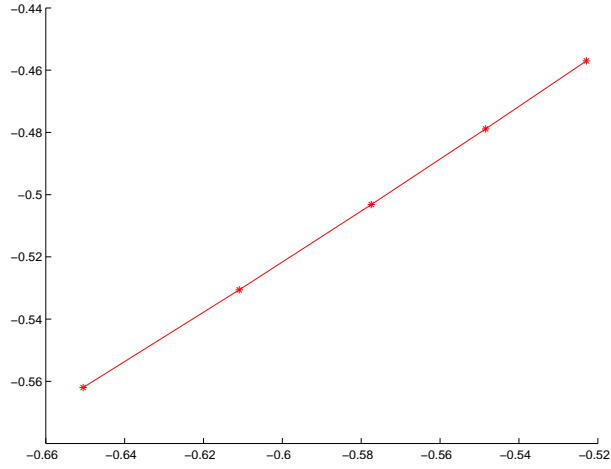


Figure 28: Order of convergence of the minimal constant $C(\varepsilon)$.

4.2 Asymptotic stable states on smooth domains

For a smooth domain Ω , the hypothesis of Theorem 3.1 in [23] holds. We have considered an ellipse. On the ellipse, the first eigenvalue $\rho_1 \simeq 0.8776$ is simple. On Figure 29, we have drawn the corresponding first eigenvector. If $\frac{1}{\varepsilon^2} > \rho_1$, the problem (4.7) has two steady states $\pm u_\varepsilon$ which

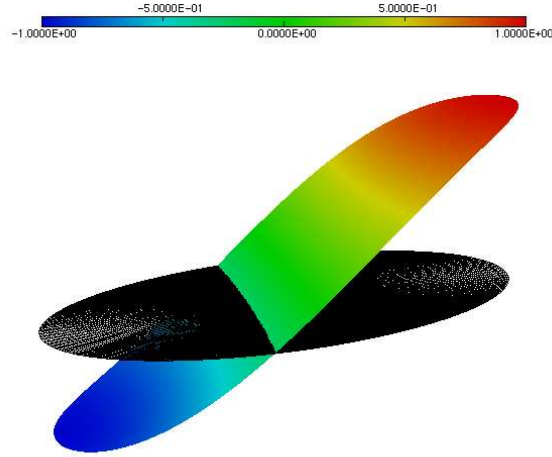


Figure 29: First eigenvector on the ellipse.

can be expressed as

$$\pm u_\varepsilon = \pm C(\varepsilon) \sqrt{\left(\frac{1}{\varepsilon^2} - \rho_1\right)} v_{\rho_1} + \sqrt{\varepsilon} o\left(\left|\frac{1}{\varepsilon^2} - \rho_1\right|^{1/2}\right),$$

where $C(\varepsilon)$ is a constant which can depend on ε . We define the approximated attractors $\pm v_\varepsilon$ by

$$\pm v_\varepsilon := \pm C(\varepsilon) \sqrt{\left(\frac{1}{\varepsilon^2} - \rho_1\right)} v_{\rho_1},$$

where v_{ρ_1} is a fixed eigenvector. On the Figure 30, we have drawn a steady states. For multiple

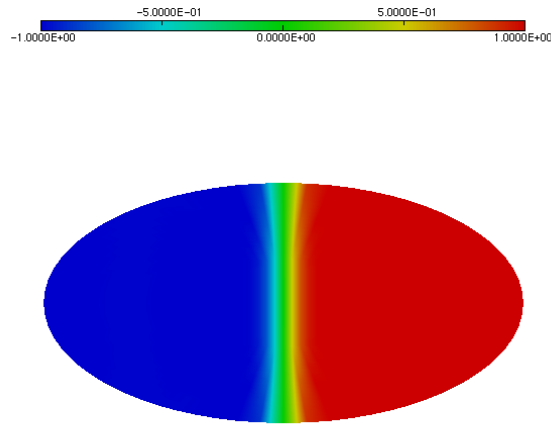


Figure 30: Steady state on the ellipse.

values of the parameter ε around the value $\frac{1}{\sqrt{\rho_1}}$, we have obtained the corresponding numerical stationary states u'_ε . As in section 4.1, we choose the constant $C(\varepsilon)$ in order to minimize the L^2 norm of $u'_\varepsilon - v_\varepsilon$ and study the convergence of u'_ε to v_ε . We consider the quantity

$$\frac{\|u'_\varepsilon - v_\varepsilon\|_2}{\|v_\varepsilon\|_2} = \frac{\|u'_\varepsilon - v_\varepsilon\|_2}{C(\varepsilon)\sqrt{\left(\frac{1}{\varepsilon^2} - \rho_1\right)}\|v_{\rho_1}\|_2}.$$

According to theorem 3.1, this relative L^2 norm should converge to zero. On Figure 31, we have drawn the decimal logarithm of this relative L^2 norm according to the decimal logarithm of $\frac{1}{\varepsilon^2} - \rho_1$.

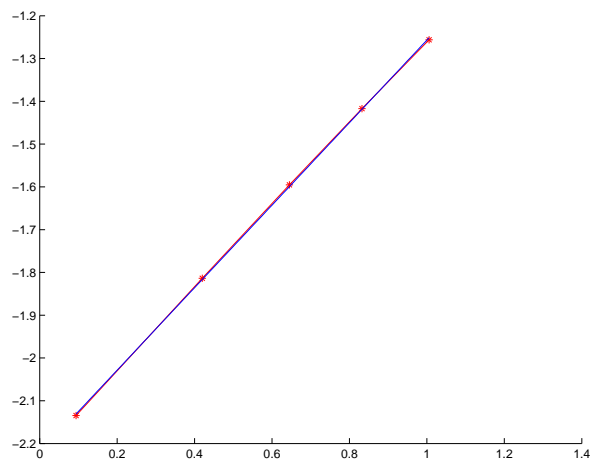


Figure 31: Convergence of the “bifurcationned” solutions on the ellipse.

Figure 31 corroborates the expected theoretical results. We can see that the relative L^2 error

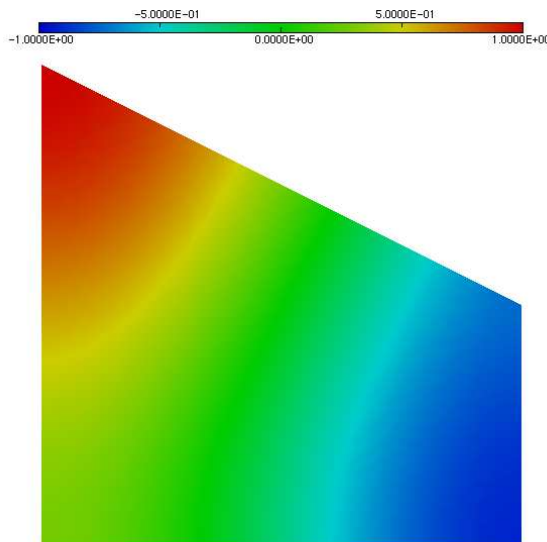


Figure 32: Eigenvector of the first eigenvalue on the trapezoid.

converges to 0 as $\frac{1}{\varepsilon^2}$ converges to ρ_1 . Then we compute the exponent $\alpha_{ellipse}$ such that

$$\|u'_\varepsilon - v_\varepsilon\|_2 \sim \tilde{C} \left| \frac{1}{\varepsilon^2} - \rho_1 \right|^{\alpha_{ellipse}}$$

where \tilde{C} is an unknown constant. We find that exponent $\alpha_{ellipse} = 1/2 + 0.9580$.

4.3 Asymptotic stable states on a trapezoid

We try to see if the results of [23] extend to non smooth domains. We have tested a trapezoid where the first eigenvalue $\rho_1 \simeq 2.2417$ is simple. On Figure 32, we have drawn the corresponding first eigenvector.

The two steady states $\pm u_\varepsilon$ should be expressed as

$$\pm u_\varepsilon(x) = \pm C(\varepsilon) \sqrt{\left(\frac{1}{\varepsilon^2} - \rho_1\right)} v_{\rho_1} + \sqrt{\varepsilon} o\left(\left|\frac{1}{\varepsilon^2} - \rho_1\right|^{1/2}\right), \quad x \in [0, 1],$$

where $C(\varepsilon)$ is a constant which can depend on ε . We define the approximated attractors $\pm v_\varepsilon$ by

$$\pm v_\varepsilon(x) := \pm C(\varepsilon) \sqrt{\left(\frac{1}{\varepsilon^2} - \rho_1\right)} v_{\rho_1}, \quad x \in [0, 1],$$

where v_{ρ_1} is a fixed eigenvector. On Figure 33, we have drawn a steady state.

For multiple values of the parameter ε around the value $\frac{1}{\sqrt{\rho_1}}$, we have obtained the corresponding numerical stationary states u'_ε . As in section 4.1, if we choose the constant $C(\varepsilon)$ in order to minimize the L^2 norm of $u'_\varepsilon - v_\varepsilon$, we can study the convergence of u'_ε to v_ε . We have found that

$$\frac{\|u'_\varepsilon - v_\varepsilon\|_2}{\|v_\varepsilon\|_2} = \frac{\|u'_\varepsilon - v_\varepsilon\|_2}{C(\varepsilon) \sqrt{\left(\frac{1}{\varepsilon^2} - \rho_1\right)} \|v_{\rho_1}\|_2}$$

does not converge to 0. It seems that the bifurcation is different in this case. On Figure 34, we have drawn the decimal logarithm of $\|u'_\varepsilon - v_\varepsilon\|_2$ according to the decimal logarithm of $\frac{1}{\varepsilon^2} - \rho_1$. We

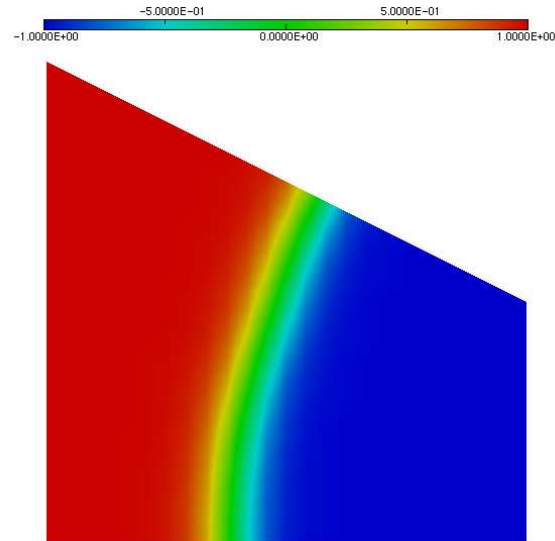


Figure 33: Steady state on the trapezoid.

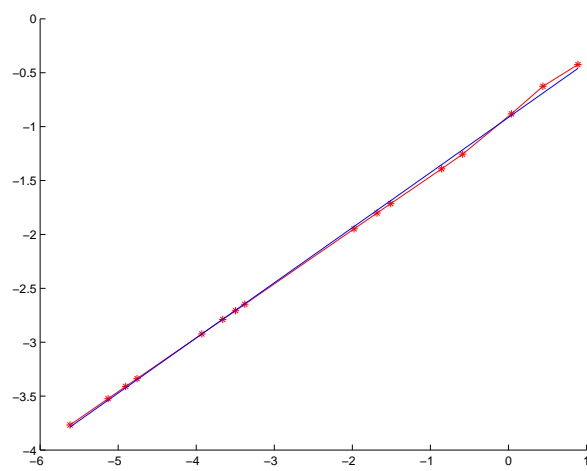


Figure 34: Convergence of the “bifurcationned” solutions on the trapezoid domain.

find that

$$\|u'_\varepsilon - v_\varepsilon\|_2 \sim \tilde{C} \left| \frac{1}{\varepsilon^2} - \rho_1 \right|^{\alpha_{trapezoid}},$$

with $\alpha_{trapezoid} = 0.49937$. Thus this difference is of the same order as each term.

As in the case of the square, we can find numerically stable states corresponding to the next modes in the nomenclature of Maier-Paape and Miller in [24]. We have found 4 numerically stable states (see Figure 35), with energies that have been drawn on Figure 36 against the length of the interface. We can clearly see the linear dependence between the two (the red line is the linear regression according to the least square method).

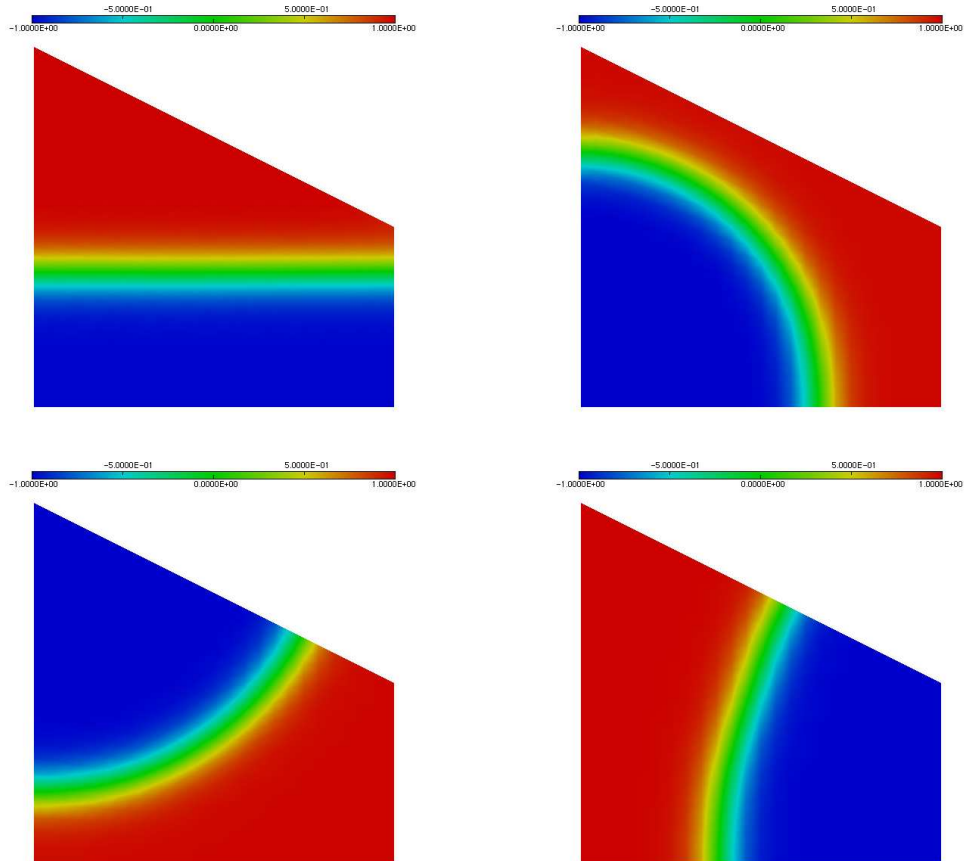


Figure 35: Numerically stable states on the trapezoid.

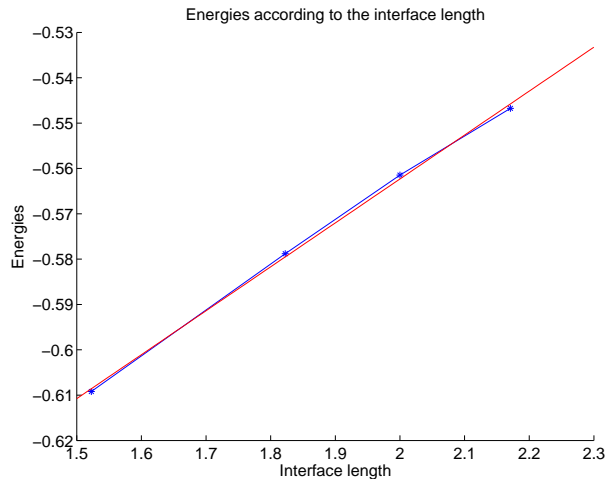


Figure 36: Energies of the numerically stable states on the trapezoid according to the length of the interface.

Acknowledgments: We thank Pr. Arnaud Debussche for fruitful discussions about this subject.

References

- [1] M. Ainsworth. Discrete dispersion relation for hp -version finite element approximation at high wave number. *SIAM J. Numer. Anal.*, 42(2):553–575 (electronic), 2004.
- [2] I. Babuška, B. A. Szabo, and I. N. Katz. The p -version of the finite element method. *SIAM J. Numer. Anal.*, 18(3):515–545, 1981.
- [3] J. W. Barrett and J. F. Blowey. Finite element approximation of the Cahn-Hilliard equation with concentration dependent mobility. *Math. Comp.*, 68(226):487–517, 1999.
- [4] J. W. Barrett, J. F. Blowey, and H. Garcke. Finite element approximation of the Cahn-Hilliard equation with degenerate mobility. *SIAM J. Numer. Anal.*, 37(1):286–318 (electronic), 1999.
- [5] P. W. Bates and P. C. Fife. The dynamics of nucleation for the Cahn-Hilliard equation. *SIAM J. Appl. Math.*, 53(4):990–1008, 1993.
- [6] C. Bernardi and Y. Maday. Spectral methods. In *Handbook of numerical analysis, Vol. V*, Handb. Numer. Anal., V, pages 209–485. North-Holland, Amsterdam, 1997.
- [7] D. Blömker, S. Maier-Paape, and T. Wanner. Second phase spinodal decomposition for the Cahn-Hilliard-Cook equation. *Trans. Amer. Math. Soc.*, 360(1):449–489 (electronic), 2008.
- [8] J. F. Blowey and C. M. Elliott. The Cahn-Hilliard gradient theory for phase separation with nonsmooth free energy. I. Mathematical analysis. *European J. Appl. Math.*, 2(3):233–280, 1991.
- [9] V. Bonnaillie-Noël, M. Dauge, D. Martin, and G. Vial. Computations of the first eigenpairs for the Schrödinger operator with magnetic field. *Comput. Methods Appl. Mech. Engrg.*, 196(37-40):3841–3858, 2007.
- [10] J. W. Cahn. On spinodal decomposition. *Acta Metallurgica*, 9(9):795–801, September 1961.
- [11] J. W. Cahn, C. M. Elliott, and A. Novick-Cohen. The Cahn-Hilliard equation with a concentration dependent mobility: motion by minus the Laplacian of the mean curvature. *European J. Appl. Math.*, 7(3):287–301, 1996.

- [12] J. W. Cahn and J. E. Hilliard. Free energy of a nonuniform system. i. interfacial free energy. *Journal of Chemical Physics*, 28(258), February 1958.
- [13] J. W. Cahn and J. E. Hilliard. Spinodal decomposition: a reprise. *Acta Metallurgica*, 19(2):151–161, February 1971.
- [14] M. I. M. Copetti and C. M. Elliott. Numerical analysis of the Cahn-Hilliard equation with a logarithmic free energy. *Numer. Math.*, 63(1):39–65, 1992.
- [15] A. Debussche and L. Dettori. On the Cahn-Hilliard equation with a logarithmic free energy. *Nonlinear Anal.*, 24(10):1491–1514, 1995.
- [16] C. M. Elliott and D. A. French. Numerical studies of the Cahn-Hilliard equation for phase separation. *IMA J. Appl. Math.*, 38(2):97–128, 1987.
- [17] C. P. Grant. Spinodal decomposition for the Cahn-Hilliard equation. *Comm. Partial Differential Equations*, 18(3-4):453–490, 1993.
- [18] M. Grinfeld and A. Novick-Cohen. Counting stationary solutions of the Cahn-Hilliard equation by transversality arguments. *Proc. Roy. Soc. Edinburgh Sect. A*, 125(2):351–370, 1995.
- [19] F. Ihlenburg and I. Babuška. Finite element solution of the Helmholtz equation with high wave number. I. The h -version of the FEM. *Comput. Math. Appl.*, 30(9):9–37, 1995.
- [20] F. Ihlenburg and I. Babuška. Finite element solution of the Helmholtz equation with high wave number. II. The h - p version of the FEM. *SIAM J. Numer. Anal.*, 34(1):315–358, 1997.
- [21] D. Kay and R. Welford. A multigrid finite element solver for the Cahn-Hilliard equation. *J. Comput. Phys.*, 212(1):288–304, 2006.
- [22] J. S. Langer. Theory of spinodal decomposition in alloys. *Annals of Physics*, 65:53–86, 1971.
- [23] T. Ma and S. Wang. Cahn-Hilliard equations and phase transition dynamics for binary systems. *arXiv*, 0806.1286v1, 2008.
- [24] S. Maier-Paape and U. Miller. Path-following the equilibria of the Cahn-Hilliard equation on the square. *Comput. Vis. Sci.*, 5(3):115–138, 2002.
- [25] S. Maier-Paape and T. Wanner. Spinodal decomposition for the Cahn-Hilliard equation in higher dimensions. I. Probability and wavelength estimate. *Comm. Math. Phys.*, 195(2):435–464, 1998.
- [26] S. Maier-Paape and T. Wanner. Spinodal decomposition for the Cahn-Hilliard equation in higher dimensions: nonlinear dynamics. *Arch. Ration. Mech. Anal.*, 151(3):187–219, 2000.
- [27] D. Martin. The finite element library Mélina.
<http://perso.univ-rennes1.fr/daniel.martin/melina>, 2008.
- [28] A. Novick-Cohen. The Cahn-Hilliard equation: mathematical and modeling perspectives. *Adv. Math. Sci. Appl.*, 8(2):965–985, 1998.
- [29] A. Novick-Cohen and L. A. Peletier. Steady states of the one-dimensional Cahn-Hilliard equation. *Proc. Roy. Soc. Edinburgh Sect. A*, 123(6):1071–1098, 1993.
- [30] A. Novick-Cohen and L. A. Segel. Nonlinear aspects of the Cahn-Hilliard equation. *Phys. D*, 10(3):277–298, 1984.
- [31] R. L. Pego. Front migration in the nonlinear Cahn-Hilliard equation. *Proc. Roy. Soc. London Ser. A*, 422(1863):261–278, 1989.
- [32] E. Sander and T. Wanner. Monte Carlo simulations for spinodal decomposition. *J. Statist. Phys.*, 95(5-6):925–948, 1999.

- [33] E. Sander and T. Wanner. Unexpectedly linear behavior for the Cahn-Hilliard equation. *SIAM J. Appl. Math.*, 60(6):2182–2202 (electronic), 2000.
- [34] E. P. Stephan and M. Suri. On the convergence of the p -version of the boundary element Galerkin method. *Math. Comp.*, 52(185):31–48, 1989.
- [35] R. H. Stogner, G. F. Carey, and B. T. Murray. Approximation of Cahn-Hilliard diffuse interface models using parallel adaptive mesh refinement and coarsening with C^1 elements. *Internat. J. Numer. Methods Engrg.*, 76(5):636–661, 2008.
- [36] J. E. Taylor and J. W. Cahn. Linking anisotropic sharp and diffuse surface motion laws via gradient flows. *J. Statist. Phys.*, 77(1-2):183–197, 1994.
- [37] T. Wanner. Maximum norms of random sums and transient pattern formation. *Trans. Amer. Math. Soc.*, 356(6):2251–2279 (electronic), 2004.