



HAL
open science

Impact of deep convection in the tropical tropopause layer in West Africa: in-situ observations and mesoscale modelling

Federico Fierli, E. Orlandi, Kathy S. Law, C. Cagnazzo, F. Cairo, C. Schiller, S. Borrmann, G. Didonfrancesco, F. Ravegnani, M. Volk

► To cite this version:

Federico Fierli, E. Orlandi, Kathy S. Law, C. Cagnazzo, F. Cairo, et al.. Impact of deep convection in the tropical tropopause layer in West Africa: in-situ observations and mesoscale modelling. *Atmospheric Chemistry and Physics*, 2011, 11 (1), pp.201-214. 10.5194/acp-11-201-2011 . hal-00458321

HAL Id: hal-00458321

<https://hal.science/hal-00458321v1>

Submitted on 21 Dec 2015

HAL is a multi-disciplinary open access archive for the deposit and dissemination of scientific research documents, whether they are published or not. The documents may come from teaching and research institutions in France or abroad, or from public or private research centers.

L'archive ouverte pluridisciplinaire **HAL**, est destinée au dépôt et à la diffusion de documents scientifiques de niveau recherche, publiés ou non, émanant des établissements d'enseignement et de recherche français ou étrangers, des laboratoires publics ou privés.

Impact of deep convection in the tropical tropopause layer in West Africa: in-situ observations and mesoscale modelling

F. Fierli¹, E. Orlandi¹, K. S. Law², C. Cagnazzo³, F. Cairo¹, C. Schiller⁴, S. Borrmann^{5,6}, G. Di Donfrancesco⁷, F. Ravegnani¹, and C. M. Volk⁸

¹Institute for Atmospheric Sciences and Climate, ISAC-CNR, Italy

²UPMC Univ. Paris 06; Univ. Versailles St-Quentin; CNRS/INSU, UMR 8190, LATMOS-IPSL, Paris, France

³CMCC, Bologna, Italy

⁴Forschungszentrum Juelich, Juelich, Germany

⁵Max Planck Institute for Chemistry, Particle Chemistry Department, Mainz, Germany

⁶Institute for Atmospheric Physics, Johannes Gutenberg University, Mainz, Germany

⁷ENEA, UTMEA-TER, Rome, Italy

⁸Department of Physics, University of Wuppertal, Wuppertal, Germany

Received: 28 December 2009 – Published in Atmos. Chem. Phys. Discuss.: 18 February 2010

Revised: 28 November 2010 – Accepted: 30 November 2010 – Published: 11 January 2011

Abstract. We present the analysis of the impact of convection on the composition of the tropical tropopause layer region (TTL) in West-Africa during the AMMA-SCOUT campaign. Geophysica M55 aircraft observations of water vapor, ozone, aerosol and CO₂ during August 2006 show perturbed values at altitudes ranging from 14 km to 17 km (above the main convective outflow) and satellite data indicates that air detrainment is likely to have originated from convective cloud east of the flights. Simulations of the BOLAM mesoscale model, nudged with infrared radiance temperatures, are used to estimate the convective impact in the upper troposphere and to assess the fraction of air processed by convection. The analysis shows that BOLAM correctly reproduces the location and the vertical structure of convective outflow. Model-aided analysis indicates that convection can influence the composition of the upper troposphere above the level of main outflow for an event of deep convection close to the observation site. Model analysis also shows that deep convection occurring in the entire Sahelian transect (up to 2000 km E of the measurement area) has a non negligible role in determining TTL composition.

1 Introduction

The role of deep convection and of large scale transport in determining the composition of the upper troposphere region is still a question of debate. The height where convection dominates is an important question to answer, since it impacts substantially the chemical composition, hence the radiative equilibrium in the tropical tropopause layer (TTL) (Fueglistaler et al., 2009; Corti et al., 2006).

Several studies (see for instance Folkins and Martin (2005); Fueglistaler and Fu (2006)) pointed out that TTL composition is controlled by slow upwelling driven by radiation, while convection determines the composition up to the lower boundary of the TTL (350 K in potential temperature coordinates) through fast vertical transport. The determination of the height of convective clouds and their subsequent impact on TTL composition is difficult to achieve from satellite measurements due to the low sensitivity of observed parameters from, for example METEOSAT, at the tropical tropopause due to the limited vertical resolution of satellite-borne profilers. The information on the height where deep convection outflow occurs and modifies water vapour and trace gas distributions can be derived from in-situ observations that offer an adequate vertical resolution. Several observational analyses based on in-situ aircraft data show that deep convection can impact up to the tropical tropopause (Dessler, 2002). Locally, convection can overshoot up to the lower stratosphere influencing directly the water budget above the tropopause as observed during the convective season in Brazil (Chaboureau et al., 2007), above the Hector



Correspondence to: F. Fierli
(f.fierli@isac.cnr.it)

convective system in northern Australia (Corti et al., 2008), and in West Africa (Khaykin et al., 2009).

The role of convection in West Africa is still poorly known; local convection superimposes its signature on the large scale circulation that is characterized by an easterly jet that transports air in the UT-LS from the Indian Ocean where deep convection in monsoon area occurs (Barret et al., 2008). A large field campaign in the framework of AMMA (African Monsoon Multidisciplinary Analyses, Redelsperger et al. (2006)) was devoted to the study of the dynamics and chemical composition of atmosphere in West Africa (Reeves et al., 2010) and, in August 2006, a specific observational activity focused on the TTL based on the M55-Geophysica observations took place (Cairo et al., 2010). The meteorological situation and phases of convective activity during 2006 wet season have been described in detail by Janicot et al. (2008).

Ancellet et al. (2009) analysed the role of local convection on tropospheric aircraft observations and concluded that convective transport played a role in governing concentrations of ozone and other chemical tracers during the wet season up to 250 hPa in August 2006. Signatures of convection can be identified as deviations of tracer concentrations from mean profile due to rapid vertical transport from the planetary boundary layer; several typologies of air masses have been identified with highly variable values of CO and O₃ mixing ratios depending on the emissions in the region where convection occurred and subsequent chemical processing in the upper troposphere. West Africa is characterized by the presence of potentially important and poorly known sources of aerosol and ozone precursors. Large latitudinal variability of nitrogen oxides emissions in West Africa during the wet season was observed during AMMA and is reported by Stewart et al. (2008); NO_x levels in the Sahelian area are high leading to higher ozone mixing ratios (Saunio et al., 2009) while ozone precursors from biomass burning in the southern hemispheric African continent can be transported by deep convection in the upper troposphere up to 10° N (Mari et al., 2008; Real et al., 2010).

A companion paper (Law et al. (2010) hereafter Law2010) presents the analysis of transport based on European Center for Medium Range Weather Forecast (ECMWF) data showing that large scale transport plays a pivotal role in determining average vertical distribution of trace species in the UTLS over West Africa while local convection has a dominant impact up to the lower boundary of the TTL (on average 180 hPa); air masses are lifted from the troposphere in the Indian Ocean and warm pool region and then advected westward by the tropical easterly jet. Schiller et al. (2009) analysed satellite observations coupled to a Lagrangian transport model showing that average values of water vapour in the UTLS appear to be controlled by large-scale transport. Nevertheless, the analysis of aircraft and balloon-borne observations indicates that local convection, i.e. convection formed in the Sahelian region extending from Sudan to West Africa between 10°N and 15°N, are likely to be superimposed on

this zonal transport and directly influence the composition in the tropical upper troposphere above 200 hPa over West Africa and downwind. Law2010 gives some indications of large scale organised uplift estimated from trajectories based on large scale analyses, that likely underestimates the effects of local convection. Here we use a mesoscale model to investigate the role of convective uplift on trace gas and aerosol concentrations over West Africa during August 2006.

The analysis is restricted to flights where there was potentially a strong influence from local convection and data collected on these specific flights are used to examine whether signatures of local deep convection can be seen in the chemical data. Moreover, the mesoscale simulations are used to estimate the variability in convective outflow through the use of the in-situ observations coupled to the trajectory analysis. The main aims of this study are to: (1) evaluate the capability of the model to reproduce the vertical structure of convective outflow and the presence of convectively processed layers above 355 K and, (2) identify the extent of such layers and compare with the observed impact of convection in the upper troposphere. In this respect these approaches are complementary with Law2010 analysing the interplay of large-scale transport and convection and this paper examining the role of local deep convection in more detail.

2 Observations

The M55 Geophysica aircraft performed 5 local flights and 2 transfer flights in West Africa from 1 to 16 August 2006. The objective was to characterize the TTL composition under different regimes (local convection, background, large scale westerly flow, and long-range transport of biomass burning emissions). M55 observations show that the thermal tropopause was located at 375 K potential temperature level (17 km) and that TTL boundaries ranged between 350 and 420 K. Moreover observations indicates the presence of enhanced aerosol due to convection in the lowermost TTL (355 K); further details are provided in Fig. 2 of Law2010. The same paper reports the analysis of average profiles of aerosol and chemical tracers during the whole M55 campaign coupled to synoptic back trajectories showing that during three flights (7 August from 12:00 to 16:00 UTC, 8 August from 12:00 to 16:00 UTC and 11 August from 14:00 to 18:00 UTC) there was a presence of organized convective systems either close to the flights or upwind over eastern and central Africa with a likely impact in the observed upper tropospheric composition. In the following subsections we present the satellite observations of deep convection and the observed vertical profiles of aerosol and chemical tracers for each one of the three selected flights.

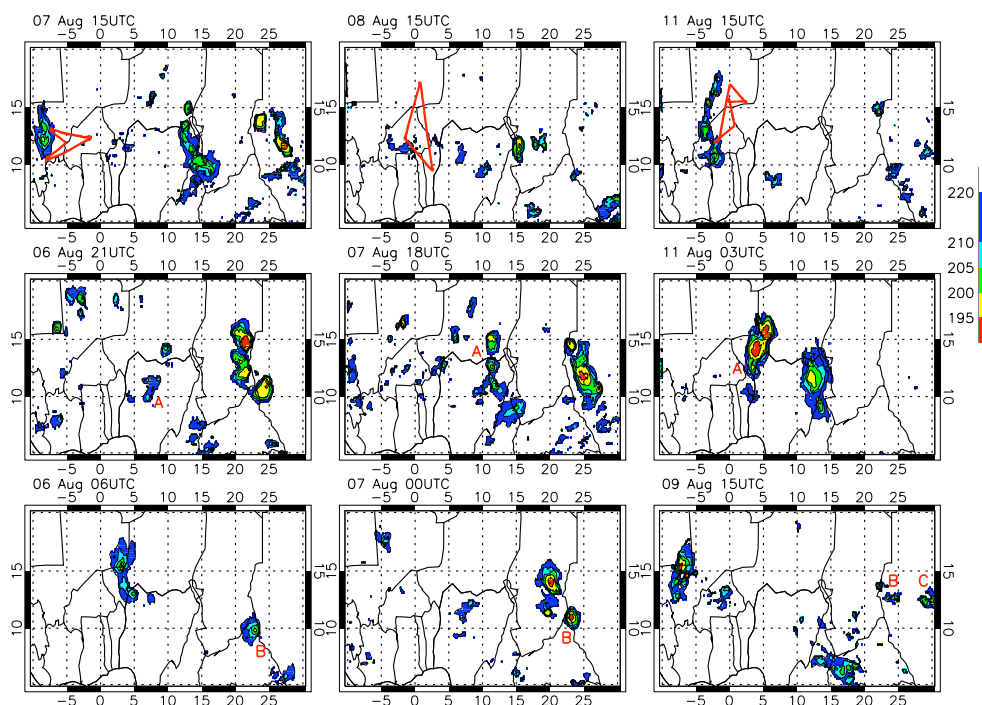


Fig. 1. METEOSAT cloud top brightness temperature time evolution prior to the M55 flight on 7 August 2006 (left panels), 8 August 2006 (central panels), and 11 August 2006 (right panels). Color scale indicates cloud top temperature expressed in K. Flight paths are shown by the red lines; red capital letters identify matches between back trajectories and deep convection as described in the text.

2.1 Satellite observations

In order to analyse the lifetime and position of Mesoscale Convective Systems (MCS) upwind and in proximity of the flight region, we use Cloud Top Brightness Temperature (CTBT) at $10.8\ \mu\text{m}$ measured by the SEVIRI instrument on-board the Meteosat Second Generation satellite (MSG). Synoptic back trajectories calculated from ECMWF data and originating from flight path are used to identify air masses likely influenced by convection. To do so, positions derived from back trajectories are matched with MSG CTBT to identify MCS outflows that likely influenced M55 observations. Figure 1 shows CTBT at the time of M55 flight (top row) and at the time of matches between back trajectories and observed deep convection for each event (central and bottom rows). A temperature threshold (CTBT < 220 K) was applied to select deep convective clouds (Schmetz et al., 1997).

2.1.1 7 August 2006

Left column in Fig. 1 shows MSG CTBT on 6 August at 06:00 UTC, at 21:00 UTC and on 7 August at 15:00 UTC. Back trajectory matches with an MCS located in northern Nigeria the evening of 6 August, i.e. 18 h prior to the flight (labeled as A in Fig. 1, left column central panel) with minimum CTBT ranging between 205 and 210 K. A second match is observed 33 h prior to the flight with an MCS in

South Chad (B, Fig. 1 left column, bottom panel) with minimum CTBT below 200 K. Moreover, the western part of the flight (indicated with the red line in Fig. 1, top panel) was close to a dissolving intense MCS in Southern Mali.

2.1.2 8 August 2006

Central column in Fig. 1 shows the MSG CTBT on 7 August at 00:00 UTC, 7 August at 18:00 UTC and on 8 August at 15:00 UTC. Back trajectory matches with a squall line between northern Nigeria and Niger late afternoon of 7 August, i.e. 21 h prior to the flight (labeled as A in Fig. 1, central column middle panel) with minimum CTBT ranging between 195 and 200 K. A second match with an MCS in South Chad is observed 39 h prior to the flight (B, Fig. 1 central column, bottom panel) with minimum CTBT below 195 K. Sparse convective activity with CTBT higher than 210 K is observed simultaneously to the flight.

2.1.3 11 August 2006

Right column in Fig. 1 shows the MSG CTBT on 9 August at 15:00 UTC, 11 August at 03:00 UTC and on 11 August at 15:00 UTC. The flight was carried out in the outflow of a vast MCS observed above western Niger 12 h prior to the flight with CTBT lower than 195 K (labeled as A in Fig. 1, right column middle panel). The MCS propagated westward and

was observed in its decaying phase west of the flight region at 15:00 UTC. A second match is observed 39 h prior to the flight with two MCSs (B and C, Fig. 1 right column, lower panel) with minimum CTBT above 200.

2.2 M55 observations

In this work observations of aerosol backscatter ratio (BSR), aerosol depolarization (δ_a), ozone (O_3), water vapour (H_2O), carbon dioxide (CO_2) and particle fine fraction (N_{6-14}) from 7, 8 and 11 August 2006 are presented. Measurements of O_3 were made using FOZAN (Fast OZone ANalyzer, Yushkov et al. (1999)), H_2O using FISH (Fast In-situ Stratospheric Hygrometer, Schiller et al. (2009)), CO_2 using HAGAR (High Altitude Gas AnalyzeR, Volk et al. (2000)), NO using SIOUX (see Voigt et al. (2008) and references therein) CO using COLD (Cryogenically Operated Laser Diode, Viciani et al. (2008)), N_{6-14} using COPAS (CONDensation PARTICle counter Systems) (Borrmann et al. (2010)), BSR and δ_a by MAS (Multiwavelength Aerosol Scatterometer, Adriani et al. (1999)). Relative humidity with respect to ice freezing (RHI) is estimated from observed H_2O , temperature and pressure using the formula prescribed by the World Meteorological Organization and the Marti and Mauersberger (1993) formula for saturation pressure over ice. The description of the campaign and the overview of each flight is provided in Cairo et al. (2010) where a list of available observations are presented. Enhanced values of BSR indicate the presence of aerosols and values of δ_a above 10% indicate the presence of ice crystals (Cairo et al., 1999). The mechanism of cirrus formation in the uppermost troposphere is still matter of debate, in particular whether ice particles formation can be directly linked to deep convective systems (see for instance Pfister et al. (2001) and Mace et al. (2006)). The use of ice particles as tracer for convection may be ambiguous.

Ultrafine particles (N_{6-14}) are estimated as the difference between the concentration of particles larger than 6 nm and larger than 14 nm; enhanced values of N_{6-14} (up to 1000 cm^{-3}) indicate that formation must be recent because nucleation mode particles exist only for few hours to one day. Such values can be observed in recent outflow of deep convective clouds (Curtius, 2006). Observations of O_3 , H_2O , CO_2 in air masses possibly influenced by local convection can be identified as deviations with respect to their average value assuming that air masses uplifted by convection are characterized by tracer concentrations close to those representative of the lower troposphere (Bertram et al., 2007). Alternatively, convective processing can act as an ozone source through lightning activity (Schumann and Huntrieser, 2007) with substantial production in the TTL (Riviere et al., 2006). As outlined in the introduction and discussed in Law2010, O_3 in the UT can come from advection of pollutants sources so in that respect, and because of its relatively long lifetime, identification of local convection signatures is not straightforward. A non convective average profile, used to iden-

tify observed outliers, was calculated from data collected on the 4 and 13 August flights. These flights were large-scale north-south transects and provide information on the background conditions in the uppermost troposphere as shown by Law2010 where background observations are compared to average convective profiles.

Figure 2 shows the M55 observations on 7 August; there and in the following Figs. 3 and 4 dashed lines represent non-convective average profile plus (and minus) one standard deviation; the flight was carried out between 11° N and 13° N and sampled a region east of the MCSs indicated by (1) in the top left panel of Fig. 1. Two layers of enhanced aerosol depolarization were observed at 350 and 370 K. Observations with enhanced aerosol concentrations ($BSR > 1.2$) are labeled with open triangles. It can be seen that particles are in the solid phase since δ_a is larger than 20% when BSR is enhanced. Total water is enhanced with respect to the average profile in both aerosol layers where RHI exceeds 100%. O_3 mixing ratios range between 45 and 60 ppbv at 350 K (where BSR is enhanced) and increase steadily above 360 K. N_{6-14} shows enhanced values (above 100 cm^{-3}) in the lower aerosol layer. In the higher layer, enhanced BSR were observed together with O_3 mixing ratios of 80 ppbv which is above the values measured below 360 K. CO_2 data were not available for this event.

Figure 3 shows the observations for 8 August; the M55 performed a north-south cross section between 8° N and 18° N (see Fig. 1, top-central panel), and measurements are likely to have been influenced by MCS outflow 20 h prior to observation. Enhanced BSR and δ_a were observed between 11° N and 14° N below 355 K, at 17° N at 365 K and at lower latitudes (11° N) between 370 and 375 K. In the lower layer, H_2O mixing ratios are much larger (15 to 200 ppmv) at 14° N with respect to 11° N . Values of RHI are above 100% inside the three aerosol layers. O_3 shows mixing ratios ranging between 40 and 70 ppbv below 360 K that corresponds to the enhanced BSR (triangles) with lower mixing ratios ($O_3 < 50$ ppbv) observed at lower latitudes ($< 12^\circ\text{ N}$). CO_2 concentrations are quite variable below 350 K (larger values at 11° N than at 14° N) and steadily increase above. Slightly reduced CO_2 concentrations were observed between 365 and 375 K. This can be interpreted as a signature of convective outflow that transport depleted CO_2 from below. In fact CO_2 mixing ratios are reduced above continents due to vegetation uptake; moreover, since convection in West Africa has a marked daily cycle with maxima in the evening and during night, when mixing layer CO_2 is around its minimum, convective uplift can be identified as negative anomaly with respect to the average vertical profile.

The aerosol layer at 365 K is also associated with enhanced H_2O (15 ppmv) and saturated RHI while no clear signature in CO_2 , CO and O_3 is visible. The highest layer at 372 K is associated with enhanced H_2O and RHI $> 100\%$ while CO_2 does not show any deviation with respect to the average profile. N_{6-14} cannot be estimated since

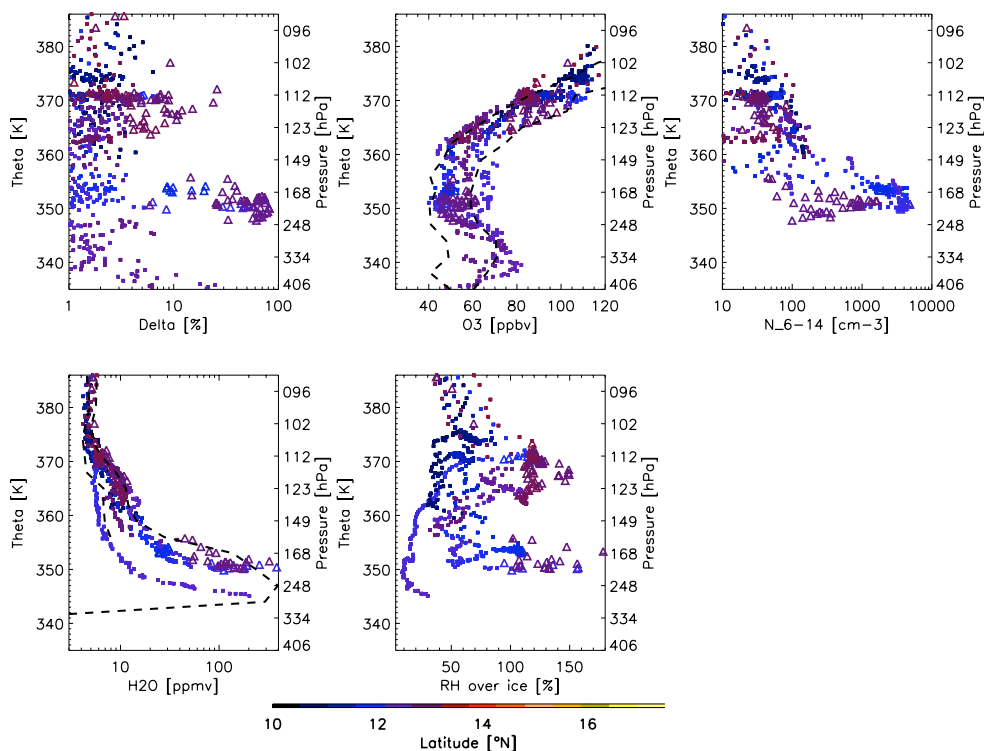


Fig. 2. Vertical profiles of observed depolarization δ_a , ozone O_3 , carbon dioxide CO_2 , particle fine fraction N_6-N_{14} , water vapour H_2O and relative humidity with respect to ice RH on 7 August 2006. Colors indicate the measurement latitude; triangles indicate the observations within air parcels containing aerosol ($BSR > 1.2$). Dashed lines indicate average values \pm one standard deviation of O_3 , CO_2 and H_2O .

observations have a partial coverage. However the analysis of total number of particles available above 360 K height do not show any increase in concentration due to nucleation event.

Figure 4 shows the observations for 11 August, taken between $12^\circ N$ and $16^\circ N$ (see Fig. 1, bottom right panel). Several layers with enhanced BSR and δ_a are observed up to 376 K. H_2O is enhanced in the 355–365 K layer at $16^\circ N$ of latitude where no particles were observed while RHI were unsaturated. Increased H_2O was also observed between 365 and 380 K at $14^\circ N$ of latitude at the same time as enhanced ice particles. N_{6-14} is higher (with values between 100 and 3000 cm^{-3}) up to 370 K and larger values are observed with background BSR. Moreover, large N_{6-14} is in general correlated to depleted CO_2 . O_3 mixing ratios range between 45 and 60 ppbv below 355 K. Between 355 and 370 K O_3 is highly variable (45 to 90 ppbv) depending on the sampled latitude and increases steadily above that level. CO_2 shows constant mixing ratios below 355 K (377 ppmv) and reduced mixing ratios (374 ppmv) from 355 to 368 K.

From the data collected during these 3 flights, it is evident that convective impact is visible below 355 K with simultaneous enhancements in water vapour, BSR and aerosol fine fraction, together with reduced concentrations of CO_2 . Enhanced concentrations of ice particles were also observed

up to these altitudes indicating that in the main outflow they were formed as a result of deep convection. Above 355 K several layers of particles under saturated conditions were observed. During 7 and 8 August these layers were less ubiquitous with respect to the main outflow below 355 K and were, on average, not correlated to a clear signature on chemical tracers. Nevertheless, small and sporadic signatures in CO_2 (and NO – not reported here) were observed above the main convective outflow level. Homan et al. (2010) presents the analysis of CO_2 profiles for 8 August and indicates that “tape recorder” signal is less compact than as during the other flights which might be an indication of convective transport while on 11 August the CO_2 depletion can be attributed to the effect of local deep convection. In fact, observations on 11 August show a different picture with ice aerosol observed throughout the vertical profile up to 375 K. In this case, convective impact reached up to 365 and 370 K based on depleted CO_2 concentrations and the presence of ultra-fine particles. O_3 mixing ratios are variable below 355 K and increase above during the first two flights (7 and 8 August) while the last analyzed event (11 August) shows a nearly constant profile up to 360 K. As observed on 8 August, O_3 in the lowermost TTL can present a latitudinal gradient that, according to Law2010, can be attributed to higher NO_x emissions and/or lightning NO_x that might be more

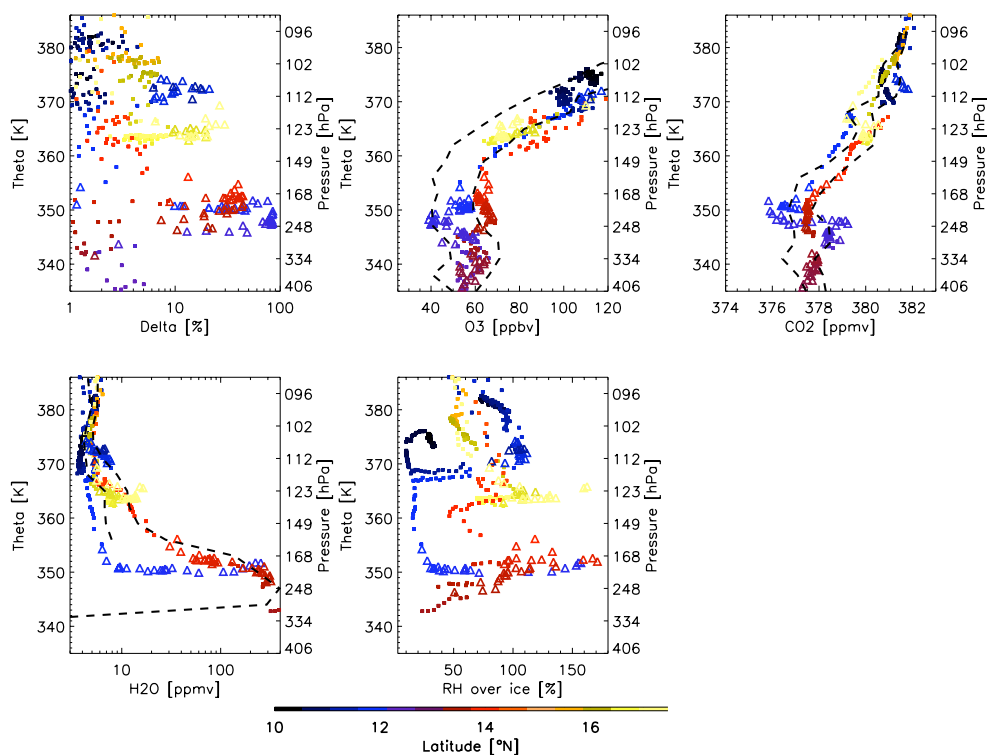


Fig. 3. As Fig. 2 but for 8 August 2006

relevant further north and directly related to the main latitude of convective activity. The role of long-range transport on the variability of chemical tracers in the TTL during AMMA is presented in Law2010, showing that local sources of O₃ over West Africa can be convectively uplifted and mix with air masses advected from upwind regions in the upper TTL; this leads to a less straightforward identification of convective signatures in O₃ in the West African troposphere with respect to oceanic convection as discussed for instance in Folkins et al. (2002). The same analysis shows also evidence for enhanced CO₂ in convection further east in air masses originating from central African BB emission regions.

Observations of ice particles and outliers in chemical species (and ultrafine particles) are often uncorrelated in the layer between the average convective outflow at 355 K and the tropopause, leading to the qualitative conclusion that this region is composed of air masses with different processing and lifetimes in the TTL. To quantify the convective transport during the M55 observations we will use now a mesoscale model as detailed below.

3 Mesoscale simulations

BOLAM (BOlogna Limited Area Model) is a meteorological mesoscale model based on primitive equations in the hydrostatic approximation and uses wind components u and v , potential temperature θ , specific humidity q and surface pres-

sure p_s and includes the advection of passive tracers. Variables are defined on hybrid coordinates and they are distributed on a non-uniformly spaced Lorenz grid. The horizontal discretization uses geographical coordinates, with latitudinal rotation on an Arakawa C-grid. The model implements a Weighted Average Flux (WAF) scheme for the three dimensional advection. The lateral boundary conditions are imposed using a relaxation scheme that minimises wave energy reflection. Deep convection is parameterized using the scheme of Kain-Fritsch (Kain, 2004). The boundary layer scheme is based on the mixing length assumption and on the turbulent kinetic energy explicit prediction; the surface turbulent fluxes are computed according to the Monin-Obukhov similarity theory. The parameterization of the effects of vegetation and soil processes is based on water and energy balance in a four layer soil model, and includes diagnostic computation of skin temperature and humidity, seasonally dependent vegetation effects, evapo-transpiration and interception of precipitation. The radiation is computed with a combined application of the scheme from Ritter and Geleyn (1992) and that from the operational ECMWF model (Morcrette et al., 1998). BOLAM uses a microphysical scheme derived from Schultz (1995) and described in Drofa (2003) that treats five categories of condensate: liquid cloud, pristine ice (cloud ice), rain, snow and graupel. The amount of pristine ice and the crystal growth by water vapour diffusion are both dependent on the supersaturation level and are parameterized via

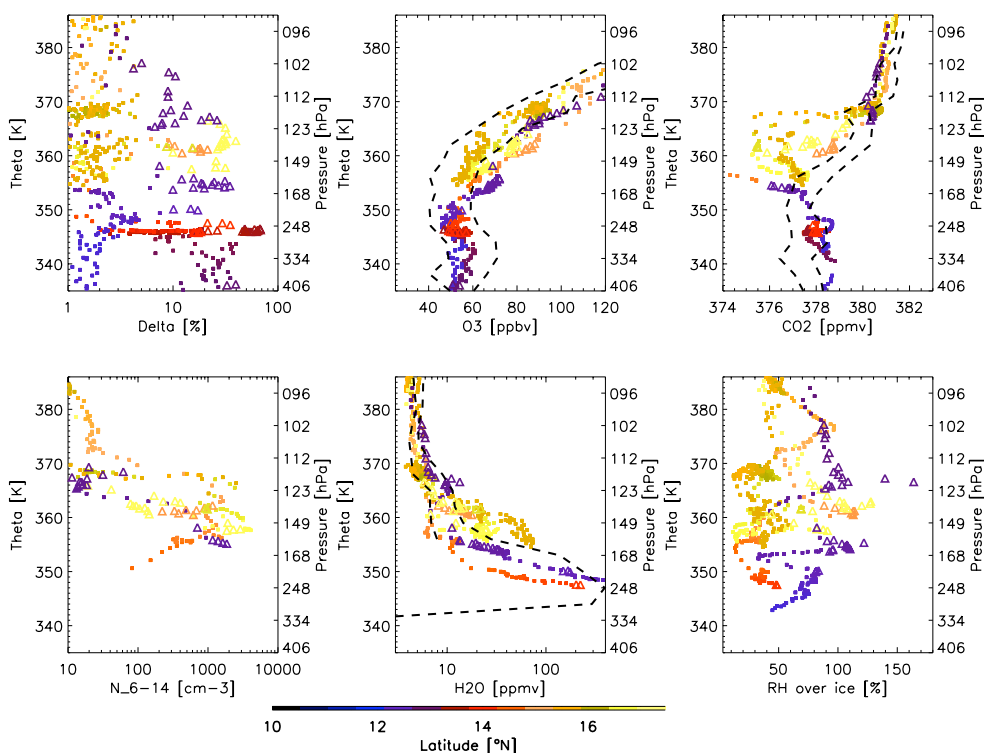


Fig. 4. As Fig. 2 but for 11 August 2006

the average mass of a single nucleated pristine crystal and a conversion rate control parameter. Ice is removed through sedimentation, conversion to graupel, melting and evaporation. Further details about the model are given in Buzzi and Foschini (2000). The model is based on a 38 vertical level hybrid coordinate system, from the ground to the top of the atmosphere (0.1 hPa) with denser levels near the ground, leading to a vertical resolution of 800 m in the upper troposphere. The horizontal domain has 235×235 grid points or 24 km horizontal resolution covering the whole Sahelian transect (15° W to 40° E in longitude and 0 to 25° N in latitude). In this study, the simulation was started at 00:00 UTC on 4 August 2006 and run until 00:00 UTC on 14 August 2006. The model was continuously nudged with brightness temperatures at $10.8 \mu\text{m}$ from Meteosat Second Generation (MSG) satellite in order to accurately reproduce the evolution of mesoscale convective systems as already described in Orlandi et al. (2010).

3.1 Validation

The nudged BOLAM simulation was evaluated by comparing model derived CTBT and the satellite observations shown in Fig. 1. Figure 5 shows, for the same times reported in Fig. 1, model CTBT calculated with the RTTOV-8 (Saunders and Brunel, 2004) radiative transfer model, using BOLAM water vapour, temperature and hydrometeors pro-

files. Similarly to Fig. 1, only regions with CTBT < 220 K are plotted. Overall the comparison between observed and simulated CTBT shows that the BOLAM model correctly reproduces the location and temperature range of convective clouds top even if it underestimates the area of convection. In particular there is a good agreement with the convective activity influencing the area sampled by M55 measurements, discussed in Sect. 2.1.

BOLAM CTBTs prior to 7 August (shown in left column of Fig. 5) correctly reproduce the observed MCSs in Fig. 1 and also the convection upwind of measurement area which developed 18 and 33 h before the flight took place (labeled A and B in Fig. 1). Model brightness temperatures for both systems range between 200 and 195 K, similarly to MSG observations.

On the 8 August, BOLAM CTBTs (central panels of Fig. 5) show the squall line (labeled as A in Fig. 1) and the convective system (labeled as B) 39 h before the flight. The modeled CTBT for MCS B is slightly lower than observed by MSG. Right column of Fig. 5 shows CTBT prior to 11 August. The evolution and CTBT of MCS labeled as (A) is correctly reproduced, although modelled clouds appear to be more scattered. The aerosol backscatter data from the Cloud-Aerosol Lidar and Infrared Pathfinder Satellite Observation (CALIPSO), shown in Fig. 6, sampled the Sahelian region at longitudes ranging between 3° E and 5° E on 11 August at 01:30 UTC. It shows a deck of solid particles up

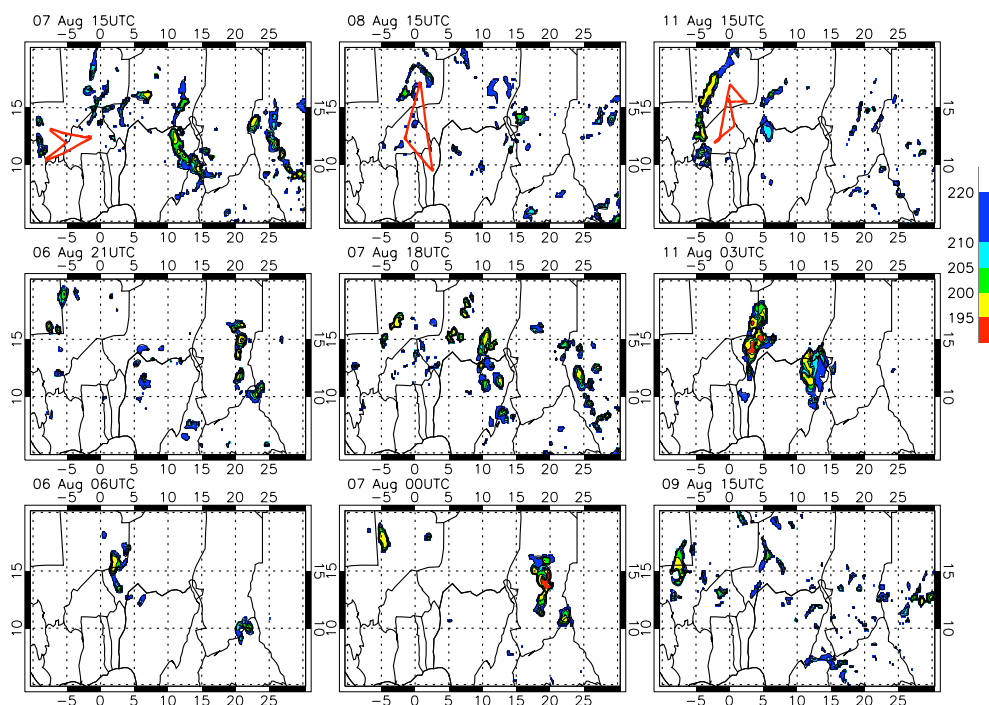


Fig. 5. As Fig. 1 but for the BOLAM model

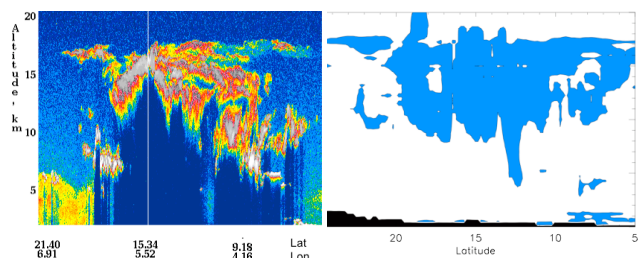


Fig. 6. Left: CALIPSO aerosol backscatter observed at 01:30 UTC on 11 August. Aerosol observations (not shown) shows that aerosol are in solid phase. Right: relative humidity with respect to ice estimated from BOLAM along the CALIPSO overpass. Shaded area shows where relative humidity exceeds 100%.

to 17 km (380 K) between 7° N and 18° N and vast deep convection area reaching up to 16.5 km (370 K) around 15° N corresponding to MCS (A) in Fig. 1 right column. BOLAM relative humidity along the CALIPSO overpass is reported in right panel of Fig. 6, showing a good agreement with observations: the model indicated that saturation occurs up to 17 km, the level of average tropopause during August 2006 (Cairo et al., 2010; Law et al., 2010), in correspondence with the CALIPSO cloud top. The latitudinal extent of the MCS is also well captured, with a slight northward shift in the BOLAM model, also visible from the comparison of system (A) reported in Figs. 1 and 5, right column. A thorough comparison of the BOLAM simulations for this event and the

improvement due to nudging to satellite observations is reported in Orlandi et al. (2010). In general, BOLAM generates less organized convective systems with respect to satellite observations even if the position and the temporal evolution of MCSs are well reproduced. Simulations also show a coherent transport behavior in the presence of MCSs generated by nudging, with increased divergence in the upper troposphere (Orlandi et al., 2010). Therefore, the transport by convective uplift and outflow can be estimated from the BOLAM simulation with an accuracy considered adequate enough to be used for the interpretation of the M55 data.

3.2 Convective tracer

In order to quantify convective uplift of lower tropospheric air with the BOLAM model, a set of Eulerian tracers are included in the run. Tracer are injected instantaneously with a timestep of 6 h in the two lowest model levels over the whole domain with a mass mixing ratio $\chi^i(\phi, \lambda, \theta)$ of 10 units where ϕ, λ, θ are the model longitude, latitude and potential temperature level. They are treated as passive tracers for 6 h following the injection and then removed from the mixed layer. The mixed layer top is the upper boundary of the region where rapid mixing occurs and can be defined as an abrupt decrease tracer mixing ratios. This approach has been previously used by Mullendore et al. (2005) for a single tracer to estimate the upward mass fluxes in deep convection from mesoscale model. Here, we extend this approach considering 31 independent tracers, injected from 4 August at

00:00 UTC until the end of period under analysis (11 August at 18:00 UTC). We remove the tracers below 400 hPa, that is above the maximum mixed layer top and below the minimum height of deep convective outflow as reproduced by the BOLAM model. Tracer profiles (not shown) indicate a mixing ratio minimum, that appears at 400 hPa 3 h after emission, above the region of rapid vertical mixing uplift tracer (that can reach up to 500 hPa) while the effect of convective uplift is visible above 300 hPa. So each tracer can be uplifted by convection only during the 6 h after emission, when it resides in the mixed layer. For each of the convective flights analysed, only the twelve tracer fields emitted in the previous 72 h have been considered. In order to quantify the amount of mixed layer air uplifted by convection during the i -th 6 h interval, the convective fraction of the i -th tracer f_c^i can be estimated for each model grid point and for each timestep t analogously to that reported in Bertram et al. (2007) as:

$$f_c^i(\phi, \lambda, \theta, t) = \frac{\chi^i(\phi, \lambda, \theta, t)}{\chi_{\text{ML}}^i} \quad (1)$$

where χ_{ML}^i is the tracer mean mass mixing ratio in the mixed layer and i is the tracer index representative of emission time. The mixed layer top is estimated for each model grid point as the minimum of the vertical gradient of tracer mixing ratio vertical profile. The use of different tracers allows estimation of the age spectrum $F_c(\phi, \lambda, \theta, t)$ of convective uplift from mixed layer as:

$$F_c(\phi, \lambda, \theta, t, T) = \sum_{i=1}^T f_c^i(\phi, \lambda, \theta, t) \quad (2)$$

where T is the time in hours of tracer emission prior to the analyzed time. The total convective fraction f_c , that is used to quantify the amount of mixed layer air regardless of the uplift time, is estimated as the sum of the f_c^i 72 h prior to each analysed time t , i.e. $F_c(\phi, \lambda, \theta, t, T = 72)$. We estimate the convective time $T_c(\phi, \lambda, \theta, t)$ as the time when 75% of total tracer concentration is present for each model grid point and time:

$$F_c(\phi, \lambda, \theta, t, T_c) = 0.75 \cdot F_c(\phi, \lambda, \theta, t, T = 72) \quad (3)$$

and represents the time (prior to the analyzed time t) when dominant convective uplift occurred. The results are slightly sensitive to changes in the threshold (60% to 75%); a positive bias (for lower thresholds) is visible especially for older outflow in limited regions but the spatial distribution remains unchanged.

4 Convective outflow from tracer simulations

We report the spatial distribution of the model diagnostics described above for each M55 flight under analysis. Figure 7 shows the convective fraction f_c and the convective

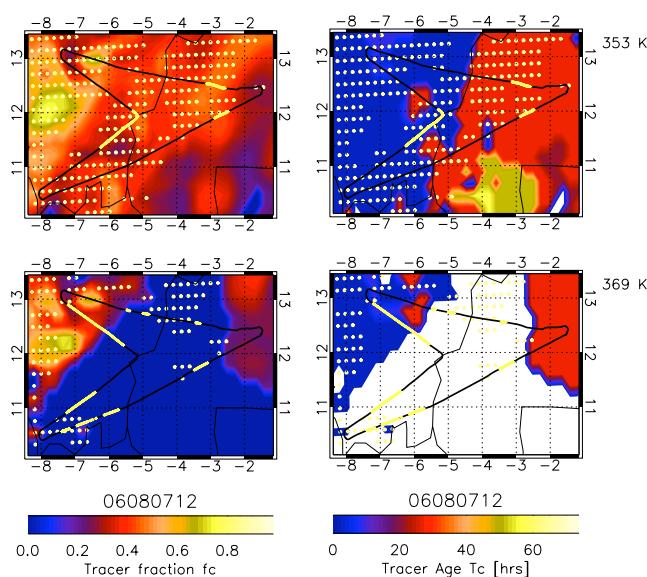


Fig. 7. Left: maps of f_c estimated from the BOLAM model (see text for definition) for two theta layers (368–369 K above the main convective levels and at 352–354 K) for 7 August 2009 at 15:00 UTC. Yellow dots indicates where BOLAM RH_{ice} exceeds 100%. The M55 path is reported in the plot: yellow thick lines indicates the part of flight occurring at the theta level reported in the figure. Right: same as left but for T_c .

time T_c on 7 August at 15:00 UTC for two θ layers at 353 K (representative of the main outflow) and 369 K (close to the tropopause). The whole flight area in the lower layer is characterized by values of total convective tracer ranging between 0.1 and 0.7 indicating that convective uplift has a likely impact. Convective age is highly variable with lower values (few hours) in the western part of the analyzed domain and higher values (24 to 48 h) in the eastern part indicating that air parcels were uplifted at different times. Based on the tracer analysis, more recent uplift occurs close to the convective system observed west of the flight region (see Fig. 1 and Fig. 5 top left panel) while more aged uplift occurs at two distinct times, in reasonable agreement with the conclusions drawn in Sect. 2.1.1. BOLAM also shows the presence of saturated air ($\text{RH}_{\text{ice}} > 100\%$) (yellow shaded area) corresponding to convective outflow with T_c less than 24 h. The distribution of f_c and T_c in the upper layer (369 K) shares similar characteristics with the lower layer but with a smaller area with significant convective impact (i.e. $f_c > 0.1$) confined to the east and west boundaries of flight region.

Figure 8 shows the same set of diagnostics for 8 August. Although a similar picture to the previous event can be inferred, the impact of deep convection in the higher layer (369 K) is larger during this event. The model shows the co-existence of air masses with different convective age T_c with older uplift in the higher layer. Higher convective

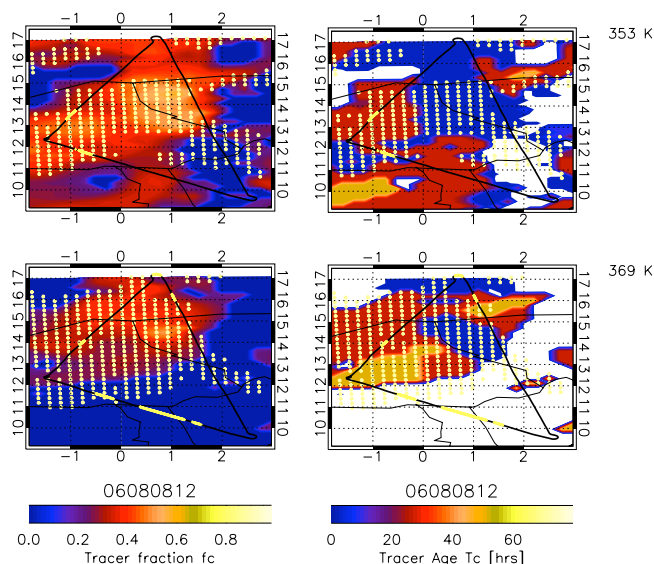


Fig. 8. As Fig. 7 but for the 8 August 2006 at 15:00 UTC .

fraction occurs in the northern part of the domain positively correlated to the observed O_3 latitudinal variability reported in Fig. 3 with higher values of O_3 (65 ppbv) observed north of 14° N. Saturated air (yellow shade) is large and is present also in the upper layer located close to the outflow.

The results for 11 August (Fig. 9) show a large convective impact in both 352 and 365 K layers in the western part of the flight area, mostly related to uplift occurring in the large MCS labeled by (1) in Fig. 1 that is correctly reproduced by BOLAM (Fig. 5, right column). T_c is lower than previous events, ranging between 6 and 20 h, with values higher than 24 h only in the eastern part of the domain at 365 K. Both layers are characterized by large areas of saturated air. In the lower level saturation occurs in the western part of the domain where older convection has a likely impact.

Overall, the analysis also shows that modeled convection has an important impact on the 353 K layer. At 365–369 K, convective transport influence is visible to a smaller extent. Moreover, the convective age (as given by T_c values) is variable showing that air masses influenced by very recent convection ($T_c < 24$ h) coexist (especially at higher altitudes) with air masses influenced by older convection ($T_c > 48$ h) which likely formed to the east over central the Sahelian region above northern Nigeria and southern Chad.

5 Comparison with observations

Since modeled and observed ice particle presence can also provide useful information, two additional diagnostics were defined to estimate model ice clouds and the extent to which such clouds might have been influenced by deep convection.

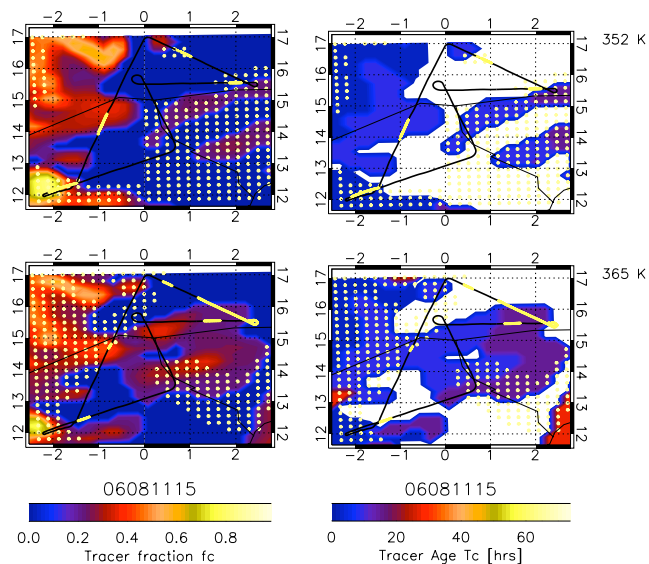


Fig. 9. As Fig. 7 but for the 11 August 2006 flight.

- The ice fraction, $f_i(\theta, t)$, is the fraction of model grid points with values of RHI > 100%
- The convective fraction of ice, f_{ic} , is the fraction of model grid points with values of RHI > 100% and with a total tracer concentration $F_c(\phi, \lambda, \theta, t, T = 72)$ greater than 0.1

We focus now on the vertical structure of convective outflow in the upper troposphere. The model diagnostics are averaged in latitude and longitude over the flight area shown in Figs. 7–9 and in the vertical over 12 θ -levels with a vertical resolution comparable to the model. In order to perform a comparison of the modeled and the observed vertical profiles, a set of diagnostics analogous to those derived from BOLAM output are applied to measurements: (1) f_{BSR} is the fraction of observations with BSR > 1.2 and describes the vertical distribution of ice clouds to be compared with f_i ; (2) f_{CO_2} is the fraction of observations with CO_2 concentrations lower than the average value minus its standard deviation and describes the possible impact of deep convection on CO_2 profiles. Vertical profiles of diagnostics are plotted in Fig. 10: observation-derived ones are colored in red and model derived in blue. The vertical profile of f_c is shown by the rightmost curve of $F_c(\theta, T)$ contours.

On 7 August the BOLAM convective fraction f_c has a maximum of 0.4 at 350 K in agreement with observations that show a similar fraction of aerosol measurements at the same height; f_c decreases rapidly with height becoming small (<0.1) above 370 K. The convective age spectra indicates that uplift occurred at three different times: less than 6 h, approximately at 31 h and more than 48 h before the flight; recent uplift, likely originating from the convective

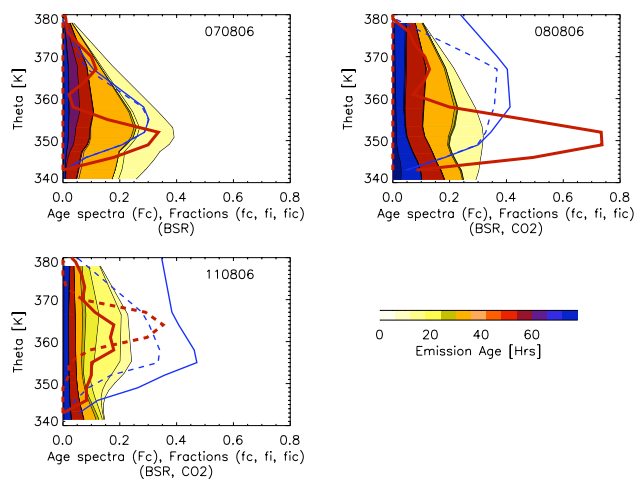


Fig. 10. Vertical profiles of the diagnostics described in the text. Model-derived ones are plotted in blue, observation-derived in red. Left column: BOLAM ice fraction f_i (solid blue line) and convective ice fraction f_{ic} (dashed blue line); observed aerosol fraction f_{BSR} (dotted red line). Right column: convective fraction f_c ; observed fraction of outliers in CO_2 f_{CO_2} plotted as dashed red line; f_{BSR} is also plotted to be compared with f_c . Top panels are for 7 August, middle for 8 August and bottom for 11 August.

system west of the flight path shown in Fig. 1, has a maximum impact at 350 K in the main convective outflow. Above, older uplift (>48 h) becomes dominant. The vertical profile of f_{BSR} for 7 August flight (Fig. 10, upper left panel, red solid line) shows the presence of two distinct layers (below 360 K and at 367 K) as shown in Fig. 2. The model-derived vertical profiles of f_{ice} (left panel, solid blue line) and f_{ice}^c (left panel, dashed blue line) indicate that BOLAM predicts the presence of ice clouds in the whole convective layer that are formed inside air masses uplifted by deep convection. In the uppermost layer, where enhanced depolarization was observed, BOLAM reproduces a smaller amount of ice clouds in connection to the older convective uplift.

On 8 August (middle panel) the vertical structure of f_{BSR} is similar to the previous day but, in this case, BOLAM shows a less steep decrease in f_c with height; enhanced f_i is simulated up to the tropopause level in agreement with observations that indicate several layers of ice particles up to 375 K. f_{ic} is equal to f_i below 355 K indicating that model ice clouds were formed in the convective outflow. Above that level the BOLAM model shows the presence of ice particles also in upper tropospheric air masses not originating from convective outflow. Above 370 K the model shows that ice forms predominantly in the uppermost troposphere and is uncorrelated to the convective uplift. Analogously to the previous event, recent uplift is confined below 355 K and above that level uplift occurred more than 24 h prior to the flight.

On 11 August (lower panel) the model shows that F_c reaches quasi-constant values up to 370 K indicating that

convective impact extended higher up in altitude with respect to the 2 previous events. Convective outflow is mainly composed of air mass recently uplifted (< 24 hrs). Nevertheless, the presence of older air masses (up to 72 h) cannot be considered negligible throughout the vertical profile. BOLAM shows also the presence of a thick ice cloud layer (peaking at 360 K) in agreement with the observations which show distinct thin layers of ice particles with a maxima in f_{BSR} at the same height. BOLAM overestimates f_i with respect to f_{BSR} and 75% of model ice clouds are of recent convective origin in the lower layer (estimated as the ratio between f_{ic} and f_i throughout the vertical range) whilst the fraction is around 30% in the upper layer. Within the 355–370 K layer, f_{CO_2} is large (up to 90%) and corresponds to regions where low CO_2 was observed (see Fig. 3).

The analysis shows that local convection hydrates the upper troposphere over West Africa and, in one case (11 August), there is a significant impact up to 375 K. Convection can induce an upward transport of water vapour and ice particles which can evaporate. This recent convection is superimposed on older convection which took place up to 3 days before the observations. Even if a detailed analysis of cirrus formation mechanisms is outside the scope of this paper, it is worth noting that modelled and observed layers of ice particles are in good agreement.

Ice particles appear to be formed directly in the main outflow below 360 K and their presence is correlated to the uplift seen by model. Above the main outflow, BOLAM humidity indicates that ice clouds often form in the TTL at the top of mesoscale convective systems. These results are in qualitative agreement with a recent analysis of CALIPSO and CLOUDSAT observations which concluded that TTL cirrus are likely observed close to deep convective clouds (Sassen et al., 2009).

6 Conclusions

The analysis presented here aimed to characterize the impact of deep convection on the West African upper troposphere in August 2006 using a combination of aircraft data and mesoscale modelling. In particular, three M55 flights were analysed where there was a clear presence of organized convective systems either close to the flights or upwind over eastern and central Africa up to 3 days earlier.

The observations of trace gases and aerosols collected during these flights on 7, 8 and 11 August, showed that it is possible to identify a main convective outflow characterized by substantial hydration, low concentrations of CO_2 and freshly nucleated ice particles. Deep convection largely determined the chemical composition up to a potential temperature level ranging between 355 K to 360 K that is assumed to be the top of the main outflow. These results confirm the results presented in Law2010 based on estimations using trajectories

calculated from large-scale meteorological analyses. Moreover, convective signatures are often observed above the top of the main outflow up to the thermal tropopause (375 K) and can be identified by observations of thin ice cloud layers, enhanced fine particles concentration and CO₂ depletion. In particular, one specific event (11 August) clearly shows that the distributions of CO₂ and fine particles were strongly perturbed up to the tropical tropopause. On the other hand, large perturbations in ozone are not always observed since this region is characterized by land based convection that transports air masses containing different levels of ozone and its precursors or aerosols (local pollution, biomass burning, soil NO_x, lightning NO_x). As discussed further in Law2010, large-scale easterly transport in the TTL can also bring lightning NO_x and pollutants from the Asian continent and air masses with marine convective signatures such as low O₃ into the UT over West Africa and its superposition on different continental sources makes it difficult to use ozone as a tracer of deep convective transport in this region. This is clearly visible for instance during one event (8 August) where ozone is highly variable in the region of main convective outflow correlated to the latitudinal dependence of local sources.

Nudged mesoscale simulations performed with the BOLAM model correctly reproduce the general pattern of convection observed during the first 15 days of August 2006 and therefore, can be used to estimate the convective outflow and compared with the measurements. Passive boundary layer tracers are used to estimate the convective age, identify when uplift occurred and calculate the fraction of convectively uplifted air masses in the flight area.

BOLAM shows good agreement with convective perturbations derived from observations of aerosol and chemical tracers for the main convective outflow region below 355 K and indicates that West Africa convection influences around 30% of air masses resulting in substantial hydration and formation of ice particles up to this level. Model tracers also indicate that convective outflow can be highly spatially variable and this might help to explain, at least on qualitative basis, the large variability in trace species observed by M55, for example, O₃ on the 8 August event. BOLAM also correctly reproduces the outflow of a recent MSC on 11 August and simulates a large convective influence (up to 20%) between 355–370 K in acceptable agreement with the convective fraction estimated from observations of CO₂ and of freshly nucleated small particles.

Recent uplift (less than 24 h) is mainly confined in the main convective layer while older uplift is important above 355 K showing that deep convection in the central Sahel has a non negligible role, at least with respect to the formation of ice layers. The event of deep convection on 11 August is characterized by air masses uplifted by recent convection up to the tropopause level; this is superposed to an older uplift, being responsible of the presence of thin ice clouds. This is confirmed, at least on qualitative basis, by in-situ observations of CO₂, water vapor and aerosol that show the presence,

in the upper troposphere, of perturbed trace gas concentrations, hydrated air and particles. Air masses perturbed by more recent convection are likely characterized by depleted CO₂ and large concentrations of freshly nucleated particles whilst ozone shows concentrations slightly higher than in the mean convective outflow.

In-situ observations and model data helped to identify and quantify the role of deep convection in the TTL showing that local convection generates a main outflow that was sampled during the measurement campaign. The impact on atmospheric composition between the main outflow and the tropopause is more difficult to assess due to different sources and the role of large-scale westward transport. Nevertheless, it is possible to identify a clear signature of local convection in the observations. Model aided analysis confirms the presence of direct injection up to the tropical tropopause by intense convective systems and indicates that composition is dependent on the residence time in the TTL after convective uplift. An interesting extension of this work would be to implement the same analysis considering the whole monsoon season in order to characterize on the longer term (and larger scale) the impact of central/west African convection on the UT. Climatological analysis of METEOSAT data (Laing et al., 2008) shows Sahelian cold clouds often formed over Nigeria, Chad and Sudan, and possibly fed by trace species from biomass burning sources (Mari et al., 2008; Real et al., 2010). Extensive regional model simulations coupled with satellite data analysis would be necessary to quantify their impact on upper tropospheric composition.

Acknowledgements. The authors acknowledge the partial support of the EC SCOUT-O3 Integrated Project (505390- GOCE-CT-2004). This work was partly supported by AMMA project. Based on French initiative, AMMA was built by an international scientific group and is currently funded by a large number of agencies, especially from France, UK, US and Africa. It has been the beneficiary of a major financial contribution from the European Community's Sixth Framework Research Programme. We acknowledge the anonymous reviewers for their valuable suggestions.

Edited by: C. Reeves

References

- Adriani, A., Viterbini, M., Cairo, F., Mandolini, S., and Di Donfrancesco, G.: Multiwavelength Aerosol Scatterometer for airborne experiments to study the stratospheric particle optical properties: *J. Atmos. Ocean. Technol.*, 16, 1328–1335, 1999.
- Ancellet, G., Leclair de Bellevue, J., Mari, C., Nedelec, P., Kukui, A., Borbon, A., and Perros, P.: Effects of regional-scale and convective transports on tropospheric ozone chemistry revealed by aircraft observations during the wet season of the AMMA campaign, *Atmos. Chem. Phys.*, 9, 383–411, doi:10.5194/acp-9-383-2009, 2009.
- Barret, B., Ricaud, P., Mari, C., Attiz, J.-L., Bousserrez, N., Josse, B., Le Flochmon, E., Livesey, N. J., Massart, S., Peuch, V.-

- H., Piacentini, A., Sauvage, B., Thouret, V., and Cammas, J.-P.: Transport pathways of CO in the African upper troposphere during the monsoon season: a study based upon the assimilation of spaceborne observations, *Atmos. Chem. Phys.*, 8, 3231–3246, doi:10.5194/acp-8-3231-2008, 2008.
- Bertram, T. H., Perring, A. E., Wooldridge, P. J., Crouse, J. D., Kwan, A. J., Wennberg, P. O., Scheuer, E., Dibb, J., Avery, M., Sachse, G., Vay, S. A., Crawford, J. H., McNaughton, C. S., Clarke, A., Pickering, K. E., Fuelberg, H., Huey, G., Blake, D. R., Singh, H. B., Hall, S. R., Shetter, R. E., Fried, A., Heikes, B. G., and Cohen, R. C.: Direct Measurements of the Convective Recycling of the Upper Troposphere, *Science*, 315, 816820, 2007.
- Borrmann, S., Kunkel, D., Weigel, R., Minikin, A., Deshler, T., Wilson, J. C., Curtius, J., Volk, C. M., Homan, C. D., Ulanovsky, A., Ravegnani, F., Viciani, S., Shur, G. N., Belyaev, G. V., Law, K. S., and Cairo, F.: Aerosols in the tropical and subtropical UT/LS: in-situ measurements of submicron particle abundance and volatility, *Atmos. Chem. Phys.*, 10, 5573–5592, doi:10.5194/acp-10-5573-2010, 2010.
- Buzzi A. and Foschini, L.: Mesoscale meteorological features associated with heavy precipitation in the southern Alpine region. *Meteorol. Atmos. Phys.*, 72, 131–146, 2000.
- Cairo F., Di Donfrancesco, G., Adriani, A., Pulvirenti, L., and Fierli, F.: Comparison of Various Linear Depolarization Parameters Measured by Lidar Applied Optics, 38, 21, 4425–4432, 1999.
- Cairo, F., Pommereau, J. P., Law, K. S., Schlager, H., Garnier, A., Fierli, F., Ern, M., Streibel, M., Arabas, S., Borrmann, S., Berthelot, J. J., Blom, C., Christensen, T., D'Amato, F., Di Donfrancesco, G., Deshler, T., Diedhiou, A., Durry, G., Engelsen, O., Goutail, F., Harris, N. R. P., Kerstel, E. R. T., Khaykin, S., Konopka, P., Kylling, A., Larsen, N., Lebel, T., Liu, X., MacKenzie, A. R., Nielsen, J., Oulanowski, A., Parker, D. J., Pelon, J., Polcher, J., Pyle, J. A., Ravegnani, F., Riviere, E. D., Robinson, A. D., Rckmann, T., Schiller, C., Simes, F., Stefanutti, L., Stroh, F., Some, L., Siegmund, P., Sitnikov, N., Vernier, J. P., Volk, C. M., Voigt, C., von Hobe, M., Viciani, S., and Yushkov, V.: An introduction to the SCOUT-AMMA stratospheric aircraft, balloons and sondes campaign in West Africa, August 2006: rationale and roadmap, *Atmos. Chem. Phys.*, 10, 2237–2256, doi:10.5194/acp-10-2237-2010, 2010.
- Corti, T., Luo, B. P., Fu, Q., Vsmel, H., and Peter, T.: The impact of cirrus clouds on tropical troposphere-to-stratosphere transport, *Atmos. Chem. Phys.*, 6, 2539–2547, doi:10.5194/acp-6-2539-2006, 2006.
- Corti, T., Luo, B. P., de Reus, M., Brunner, D., Cairo, F., Mahoney, M. J., Martucci, G., Matthey, R., Mitev, V., dos Santos, F. H., Schiller, C., Shur, G., Sitnikov, N. M., Spelten, N., Vossing, H. J., Borrmann, S., and Peter, T.: Unprecedented evidence for deep convection hydrating the tropical stratosphere, *Geophys. Res. Lett.*, 35, L10810, doi:10.1029/2008GL033641, 2008.
- Chaboureaud, J.-P., Cammas, J.-P., Duron, J., Mascart, P. J., Sitnikov, N. M., and Voessing, H.-J.: A numerical study of tropical cross-tropopause transport by convective overshoots, *Atmos. Chem. Phys.*, 7, 1731–1740, doi:10.5194/acp-7-1731-2007, 2007.
- Curtius J.: Nucleation of atmospheric particles, *C. R. Physique*, 7, 1027–1045, 2006.
- Dessler, A. E.: The effect of deep, tropical convection on the tropical tropopause layer, *J. Geophys. Res.*, 107(D3), 4033, doi:10.1029/2001JD000511, 2002.
- Drofa, O. V.: The parameterization of microphysical processes for atmospheric numerical models, *Il Nuovo Cimento*, 26C(3), 233–262, 2003.
- Fierli, F., Di Donfrancesco, G., Cairo, F., Marcal, V., Zampieri, M., Orlandi, E., and Durry, G.: Variability of cirrus clouds in a convective outflow during the Hibiscus campaign, *Atmos. Chem. Phys.*, 8, 4547–4558, doi:10.5194/acp-8-4547-2008, 2008.
- Folkens, I., Braun, C., Thompson, A. M., and Witte, J.: Tropical ozone as an indicator of deep convection, *J. Geophys. Res. Atmos.*, 107(D13), 4184, doi:10.1029/2001JD001178, 2002.
- Folkens, I. and Martin, R. V.: The vertical structure of tropical convection and its impact on the budgets of water vapor and ozone, *J. Atmos. Sci.*, 62, 1560–1573, 2005.
- Fueglistaler, S. and Fu, Q.: Impact of clouds on radiative heating rates in the tropical lower stratosphere, *J. Geophys. Res.*, 111, D23202, doi:10.1029/2006JD007273, 2006.
- Fueglistaler, S., Dessler, A. E., Dunkerton, T. J., Folkens, I., Fu, Q., and Mote, P. W.: Tropical tropopause layer, *Rev. Geophys.*, 47, RG1004, doi:10.1029/2008RG000267, 2009.
- Gheusi, F. and Stein, J.: Lagrangian description of airflows using Eulerian passive tracers, *Q. J. Roy. Meteorol. Soc.*, 128(579), 337–360, 2002.
- Homan, C. D., Volk, C. M., Kuhn, A. C., Werner, A., Baehr, J., Viciani, S., Ulanovsky, A., and Ravegnani, F.: Tracer measurements in the tropical tropopause layer during the AMMA/SCOUT-O3 aircraft campaign, *Atmos. Chem. Phys.*, 10, 3615–3627, doi:10.5194/acp-10-3615-2010, 2010.
- Janicot, S., Thorncroft, C. D., Ali, A., Asencio, N., Berry, G., Bock, O., Bourles, B., Caniaux, G., Chauvin, F., Deme, A., Kergoat, L., Lafore, J.-P., Lavaysse, C., Lebel, T., Marticorena, B., Mounier, F., Nedelec, P., Redelsperger, J.-L., Ravegnani, F., Reeves, C. E., Roca, R., de Rosnay, P., Schlager, H., Sultan, B., Tomasini, M., Ulanovsky, A., and ACMAD forecasters team: Large-scale overview of the summer monsoon over West Africa during the AMMA field experiment in 2006, *Ann. Geophys.*, 26, 2569–2595, doi:10.5194/angeo-26-2569-2008, 2008.
- Kain, J. S.: The Kain-Fritsch convective parametrization: an update. *J. App. Meteorol.*, 43, 170–181, 2004.
- Khaykin, S., Pommereau, J.-P., Korshunov, L., Yushkov, V., Nielsen, J., Larsen, N., Christensen, T., Garnier, A., Lukyanov, A., and Williams, E.: Hydration of the lower stratosphere by ice crystal geysers over land convective systems, *Atmos. Chem. Phys.*, 9, 2275–2287, doi:10.5194/acp-9-2275-2009, 2009.
- Laing, A.G., Carbone, R., Levizzani, V., and Tuttle, J.: The propagation and diurnal cycles of deep convection in northern tropical Africa, *Q. J. Roy. Meteorol. Soc.*, 134, 93–109, doi:10002/qj.194, 2008.
- Law, K. S., Fierli, F., Cairo, F., Schlager, H., Borrmann, S., Streibel, M., Real, E., Kunkel, D., Schiller, C., Ravegnani, F., Ulanovsky, A., d'Amato, F., Viciani, S., and Volk, C. M.: Air mass origins influencing TTL chemical composition over West Africa during 2006 summer monsoon, *Atmos. Chem. Phys.*, 10, 10753–10770, doi:10.5194/acp-10-10753-2010, 2010.
- Mace, G. G., Benson, S., and Vernon, E.: Cirrus Clouds and the Large-Scale Atmospheric State: Relationships Revealed by Six Years of Ground-Based Data, *J. Climate*, 19, 3257–3278, doi:10.1175/JCLI3786.1, 2006.

- Mari, C. H., Cailley, G., Corre, L., Saunois, M., Atti, J. L., Thouret, V., and Stohl, A.: Tracing biomass burning plumes from the Southern Hemisphere during the AMMA 2006 wet season experiment, *Atmos. Chem. Phys.*, 8, 3951–3961, doi:10.5194/acp-8-3951-2008, 2008.
- Marti, L. and Mauersberger, K.: A survey and new measurements of ice vapor pressure at temperatures between 170 and 250 K, *Geophys. Res. Lett.*, 20, 363–366, 1993.
- Morcrette, J. J., Clough, S. A., Mlawer, E. J., and Iacono, M. J.: Impact of a validated radiative transfer scheme, RRTM, on the ECMWF model climate and 10-day forecasts. ECMWF Technical Memo., 252, 1998.
- Mullendore G. L., Durran D. R., and Holton, J. R.: Cross.tropopause tracer transport in midlatitude convection, *J. Geophys. Res.*, 116, D06113, doi:10.129/2004JD005059, 2005.
- Orlandi, E., Fierli, F., Davolio, S., Buzzi, A., and Drofa, O.: A nudging scheme to assimilate satellite brightness temperature in a meteorological model: Impact on representation of African mesoscale convective systems, *Q. J. Roy. Meteorol. Soc.*, 136(647), 462–474, 2010.
- Pfister, L., Selkirk, H. B., Jensen, E. J., Schoeberl, M. R., Toon, O. B., Browell, E. V., Grant, W. B., Gary, B., Mahoney, M. J., Bui, T. V., and Hintsa, E.: Aircraft observations of thin cirrus clouds near the tropical tropopause, *J. Geophys. Res.*, 106(D9), 9765–9786, 2001.
- Real, E., Orlandi, E., Law, K. S., Fierli, F., Josset, D., Cairo, F., Schlager, H., Borrmann, S., Kunkel, D., Volk, C. M., McQuaid, J. B., Stewart, D. J., Lee, J., Lewis, A. C., Hopkins, J. R., Ravegnani, F., Ulanovski, A., and Lioussé, C.: Cross-hemispheric transport of central African biomass burning pollutants: implications for downwind ozone production, *Atmos. Chem. Phys.*, 10, 3027–3046, doi:10.5194/acp-10-3027-2010, 2010.
- Redelsperger, J. L., Thorncroft, C., Diedhiou, A., Lebel, T., Parker, D. J., and Polcher, J.: African Monsoon Multidisciplinary Analysis (AMMA): An International Research Project and Field Campaign, *BAMS*, 87(12), 1739–1746, 2006.
- Reeves, C. E., Formenti, P., Afif, C., Ancellet, G., Attiz, J.-L., Bechara, J., Borbon, A., Cairo, F., Coe, H., Crumeyrolle, S., Fierli, F., Flamant, C., Gomes, L., Hamburger, T., Jambert, C., Law, K. S., Mari, C., Jones, R. L., Matsuki, A., Mead, M. I., Methven, J., Mills, G. P., Minikin, A., Murphy, J. G., Nielsen, J. K., Oram, D. E., Parker, D. J., Richter, A., Schlager, H., Schwarzenboeck, A., and Thouret, V.: Chemical and aerosol characterisation of the troposphere over West Africa during the monsoon period as part of AMMA, *Atmos. Chem. Phys.*, 10, 7575–7601, doi:10.5194/acp-10-7575-2010, 2010.
- Ritter, B. and Geleyn, J.: A comprehensive radiation scheme for numerical weather prediction models with potential applications in climate simulations, *Mon. Weather Rev.*, 120, 303–325, 1992.
- Rivière, E. D., Marecal, V., Larsen, N., and Cautenet, S.: Modelling study of the impact of deep convection on the UTLS air composition. Part 2: budget of ozone in the TTL, *Atmos. Chem. Phys.*, 6, 1585–1598, doi:10.5194/acp-6-1585-2006, 2006.
- Sassen K., Wang, Z. and Liu, D. , Cirrus clouds and deep convection in the tropics: Insights from CALIPSO and CloudSat, *Journ. Geophys. Res.*, 114, D00H06, doi:10.129/2009JD011916, 2009.
- Saunders, R. and Brunel, P.: RTTOV 8.5 user guide, EUMETSAT SAFNWP <http://www.metoffice.gov.uk/research/interproj/nwpsaf/rtm/>, 2004.
- Saunois, M., Reeves, C. E., Mari, C. H., Murphy, J. G., Stewart, D. J., Mills, G. P., Oram, D. E., and Purvis, R. M.: Factors controlling the distribution of ozone in the West African lower troposphere during the AMMA (African Monsoon Multidisciplinary Analysis) wet season campaign, *Atmos. Chem. Phys.*, 9, 6135–6155, doi:10.5194/acp-9-6135-2009, 2009.
- Schultz, P.: An explicit cloud physics parameterization for operational numerical weather prediction, *Mon. Weather Rev.*, 123, 3331–3343, 1995.
- Schmetz J., Tjemkes, S. A., Gube, M., and van de Berg, L.: Monitoring deep convection and convective overshooting with METEOSAT, *Advances in Space Research, Proceedings of the A0.1 Symposium of COSPAR Scientific Commission A*, 19(3), 433–441, 1997.
- Schiller, C., Grooß, J.-U., Konopka, P., Plöger, F., Silva dos Santos, F. H., and Spelten, N.: Hydration and dehydration at the tropical tropopause, *Atmos. Chem. Phys.*, 9, 9647–9660, doi:10.5194/acp-9-9647-2009, 2009.
- Schumann, U. and Huntrieser, H.: The global lightning-induced nitrogen oxides source, *Atmos. Chem. Phys.*, 7, 3823–3907, doi:10.5194/acp-7-3823-2007, 2007.
- Stewart, D. J., Taylor, C. M., Reeves, C. E., and McQuaid, J. B.: Biogenic nitrogen oxide emissions from soils: impact on NO_x and ozone over west Africa during AMMA (African Monsoon Multidisciplinary Analysis): observational study, *Atmos. Chem. Phys.*, 8, 2285–2297, doi:10.5194/acp-8-2285-2008, 2008.
- Viciani, S., D’Amato, F., Mazzinghi, P., Castagnoli, F., Toci, G., and Werle, P.: A cryogenically operated laser diode spectrometer for airborne measurement of stratospheric trace gases, *Appl. Phys. B*, 90, 581–592, 2008.
- Voigt, C., Schlager, H., Roiger, A., Stenke, A., de Reus, M., Borrmann, S., Jensen, E., Schiller, C., Konopka, P., and Sitenkov, N.: Detection of reactive nitrogen containing particles in the tropopause region evidence for a tropical nitric acid trihydrate (NAT) belt, *Atmos. Chem. Phys.*, 8, 7421–7430, doi:10.5194/acp-8-7421-2008, 2008.
- Volk, C. M., Riediger, O., Strunk, M., Schmidt, U., Ravegnani, F., Ulanovsky, A., and Rudakov, V.: In situ Tracer Measurements in the Tropical Tropopause Region During APE-THESEO, *Eur. Comm. Air Pollut. Res. Report* 73, 661–664, 2000.
- Yushkov, V., Oulouanovsky, A., Lechenuk, N., Roudakov, I., Arshinov, K., Tikhonov, F., Stefanutti, L., Ravegnani, F., Bonaf, U., and Georgiadis, T.: A chemiluminescent analyzer for stratospheric measurements of ozone concentration (FOZAN), *J. Atmos. Ocean. Tech.*, 16, 1345–1350, 1999.