

# Variational fluid flow measurements from image sequences: synopsis and perspectives

D. Heitz · E. Mémin · C. Schnörr

Received: 21 November 2008 / Revised: 17 October 2009 / Accepted: 20 October 2009

**Abstract** Variational approaches to image motion segmentation has been an active field of study in image processing and computer vision for two decades. We present a short overview over basic estimation schemes and report in more detail recent modifications and applications to fluid flow estimation. Key properties of these approaches are illustrated by numerical examples. We outline promising research directions and point out the potential of variational techniques in combination with correlation-based PIV methods, for improving the consistency of fluid flow estimation and simulation.

## Contents

1	Introduction	1
2	Optical flow representation	2
2.1	Optical flow and fluid flow	3
2.1.1	3D flow with laser-sheet visualization	3
2.1.2	3D flow with volumic visualization or 2D flow	4
2.1.3	3D flow with altimetric or transmittance imagery	4
2.2	Optical flow and correlation	5
2.3	Aperture problem	5
3	Basic motion estimation schemes	5

3.1	Parametric representation and local or semi-local estimation	6
3.1.1	Local disjoint spatial supports: correlation, “block matching” and “Lucas and Kanade”	6
3.1.2	Globalized local smoothing: Ritz method	7
3.2	Nonparametric representation and non-local estimation	9
4	Specific motion estimation schemes	9
4.1	Higher-order regularization	10
4.2	Physical constraints and controlled estimation	10
4.3	Robust measures	11
4.4	Multiscale estimation	12
4.4.1	Multiresolution scheme	12
4.4.2	Correlation-based variational scheme	12
4.5	Utilizing temporal context	13
4.5.1	Local temporal context and iterative estimation	13
4.5.2	Non-local temporal context	14
5	Experimental results	16
5.1	First- and second-order regularization, robust norms	16
5.2	Correlation-based variational scheme	18
5.3	Spatiotemporal regularization	19
6	Conclusion and Perspectives	20
6.1	Conclusion	20
6.2	3D-PIV	21
6.3	Turbulence models	21

D. Heitz  
Cemagref, UR TERE, 17 avenue de Cucillé, CS64427, F-35044  
Rennes, France.  
Université européenne de Bretagne, France.  
E-mail: dominique.heitz@cemagref.fr  
Fluminance research group: <http://www.irisa.fr/fluminance>

E. Mémin  
INRIA, Campus Universitaire de Beaulieu, F-35042 Rennes, France.  
E-mail: Etienne.Memin@inria.fr  
Fluminance research group: <http://www.irisa.fr/fluminance>

C. Schnörr  
University of Heidelberg, Dept. Math. & Comp. Science, Speyerer  
Str. 4-6, D-69115 Heidelberg, Germany.  
E-mail: schnoerr@math.uni-heidelberg.de

## 1 Introduction

This paper provides a synopsis of more than two decades research on image motion estimation in the field of image processing and computer vision. It reflects recent collaborations and exchange of ideas between research groups from this field and partners in experimental fluid dynamics. Examples of corresponding projects are the European FET-project “Fluid Image analysis and Description”<sup>1</sup>, the priority programme on “Image Measurements in Experimental Fluid Dynamics” of the German Science Foundation (DFG)<sup>2</sup>, and

<sup>1</sup> <http://fluid.irisa.fr/>

<sup>2</sup> <http://www.spp1147.tu-berlin.de/>

an international symposium on “Experimental Fluid Dynamics, Computer Vision and Pattern Recognition” that held at Schloß Dagstuhl<sup>3</sup> in spring 2007.

Rather than making an attempt to comprehensively review the vast literature, we focus on a concise presentation and classification of essential concepts that we regard as particularly relevant for image analysis in experimental fluid dynamics, with a high potential for future common developments. Likewise, the list of references is by no means exhaustive but includes some key papers as well as links to more recent technical works, containing details that we deliberately omit here in order not to disrupt the main thread of the paper.

The material below complements expositions of established PIV methods based on image correlation (Adrian, 2005; Raffel *et al.*, 2007), and also the recent review (Jähne *et al.*, 2007) where variational methods are only briefly mentioned. It also indicates that image processing, visualization and computer vision has become an interdisciplinary field of scientific computing with strong links to various disciplines of applied and computational mathematics. Recent textbooks illustrate this trend (Chan & Shen, 2005; Aubert & Kornprobst, 2006; Paragios *et al.*, 2005).

This latter trend provides the background and underlines the main message that we intend to convey in this paper. In our opinion, *variational methods* for fluid flow estimation from image sequences provide a proper framework for consistently combining image measurements with structural constraints due to the underlying continuum mechanics, thus paving the way for bridging the gap between experiments and simulation in the future. The latter community (e.g. Berselli *et al.* (2006)) utilizes concepts closely related to those employed in current research on mathematical image analysis.

*Organization* We first outline in Section 2 the relation between fluid flow and optical flow. Optical flow models, also called data terms or observation models, are presented for three families of experimental configurations. Then an analysis of the physical assumptions underlying these model-based measurements techniques compared to classical correlation technique is proposed.

Next, we turn in Section 3 to basic variational schemes for motion estimation, broadly classified according to the representation of vector fields: local, parametric, nonparametric. Further issues include the underlying assumptions that justify a specific representation, discretization, existence and spatial density of estimates, and complexity of their numerical computation.

Section 4 is devoted to modifications of the basic schemes that are suitable for estimation of fluid flows. These include higher-order regularization in order not to penalize too much high spatial gradients, a basic distributed-parameter control

setting for directly controlling motion estimation through physical constraints, an outlier handling through using robust norms or semi-norms, a multiresolution scheme to handle large displacements, and an hybrid variational estimation schemes combining the best properties of approaches from PIV and computer vision. This section also exhibits very recent developments, exploiting temporal context in terms of fluid *dynamics*, for motion estimation. We outline both a short-time estimation scheme that iteratively alternates respective numerical computations, and a more general estimation scheme that embodies in a distributed parameter setting what is well-known in engineering for the case of lumped systems. This last approach take a further major step towards an integrated fluid motion “estimation and simulation” framework.

Numerical experiments illustrating various facets of the material presented so far, are presented and discussed in Section 5.

Finally, we conclude in Section 6 and indicate few research directions that show most promise in our opinion: extensions of variational approaches to three-dimensional PIV, and the incorporation of turbulence models based on turbulent kinetic energy decay for motion estimation with high spatial resolution.

*Notation.*  $\Omega \subset \mathbb{R}^2$  denotes the two-dimensional image section and  $\mathbf{x} \in \Omega$  any point in it. A recorded image sequence is given in terms of an intensity function

$$I: \Omega \times [0, T] \rightarrow I(\mathbf{x}, t) .$$

We denote vector fields with

$$\mathbf{w}: \Omega \rightarrow \mathbf{w}(\mathbf{x}) = (u(\mathbf{x}), v(\mathbf{x}))^\top = \begin{pmatrix} u(\mathbf{x}) \\ v(\mathbf{x}) \end{pmatrix} ,$$

where  $\cdot^\top$  indicates transposition, i.e. the conversion of row-vectors to column-vectors, and vice-versa.

This notation reflects the continuous physical origin of the quantities involved and deliberately ignores the fact that  $I$  is given by samples at discrete locations in  $\Omega$  as well as along the time axis  $t \in 0, 1, \dots, T$ . Bridging this gap between numerical computations and the physical world amounts to devise proper discretization schemes that usually do not emerge from signal sampling itself.

## 2 Optical flow representation

In computer vision rigid or quasi-rigid body motion estimation methods usually rely on the assumption of the temporal conservation of an invariant derived from the data. These common *photometric* invariants used for motion estimation are described in §2.1.2. *Geometric* invariance deals

<sup>3</sup> <http://www.dagstuhl.de/>

with particular geometric configurations of the image function such as corners, contours, etc. They define local features that are usually stable over time, but provide only sparse information for motion estimation in sufficiently structured images. For fluid images, however, these features are difficult to define and to extract. Photometric quantities, on the other hand, are more easy to define and to compute, but are not always invariants. This raises the problem of the connection between optical flow and fluid flow. This problem is addressed in §2.1. The physics-based optical flow equation is given based on the derivation of the projected motion equations. An analysis of the physical assumptions underlying these model-based measurements techniques compared to classical correlation technique is proposed in §2.2. Optical flow equations alone do not suffice to compute image motion. This badly-posed motion estimation problems, called aperture problem, is defined in §2.3.

## 2.1 Optical flow and fluid flow

Optical flow is the apparent velocity vector field corresponding to the observed motion of photometric patterns in successive image sequences. This motion is described by the optical flow equation also called observation term or data term. The optical flow equation establishes precisely the link between the spatiotemporal radiance variation from an emitting object in three-dimensional space and its projection onto the image plane. For laser sheet flow visualization the optical flow equation is the projection of the equation of motion onto the image plane (see §2.1.1). For volumic flow visualization of three-dimensional flows or for visualization of two-dimensional flows, the optical flow equation has the classical form of the transport equation (see §2.1.2). Finally for three-dimensional flow with altimetric or transmittance imagery the optical flow is derived from the integration of the continuity equation (see §2.1.3).

### 2.1.1 3D flow with laser-sheet visualization

The relation between fluid flow and optical flow has been described exhaustively by Liu & Shen (2008). The projected motion equations for eleven typical flow visualizations have been carefully derived. Using the underlying governing equation of flow (phase number equation for particulate flow or scalar transport equation), they have shown that the optical flow  $\mathbf{w}$  is proportional to the path averaged velocity of particles or scalar across the laser sheet and have proposed the following physics-based optical flow equation,

$$\partial_t I + \nabla^T(I\mathbf{w}) = f(\mathbf{x}, I), \quad (1)$$

where  $f(\mathbf{x}, I) = D\nabla^2 I + DcB + c\mathbf{n} \cdot (N\mathbf{u})|_{\Gamma_-}^{\Gamma_+}$  and  $D$  is a diffusion coefficient,  $c$  is a coefficient for particle scattering/absorption or scalar absorption,  $B = -\mathbf{n} \cdot \nabla \psi|_{\Gamma_-}^{\Gamma_+} -$

$\nabla \cdot (\psi|_{\Gamma_-} \nabla \Gamma_- + \psi|_{\Gamma_+} \nabla \Gamma_+)$  is a boundary term that is related to the considered transported quantity  $\psi$ , and its derivatives coupled with the derivatives of the control surfaces  $\Gamma_-$ ,  $\Gamma_+$  of the laser sheet illuminated volume. Since the control surfaces are planar, there is no particle diffusion by molecular process, and the rate of accumulation of the particle in laser sheet illuminated volume is neglected, the term  $f(\mathbf{x}, I) \simeq 0$  and equation (1) reads

$$\partial_t I + \mathbf{w} \cdot \nabla I + I \operatorname{div} \mathbf{w} = 0. \quad (2)$$

In (1) and (2), the optical flow  $\mathbf{w}$  is proportional to the path-averaged velocity weighted with a field  $\psi$  (scalar concentration or particle number per unit total volume) which is defined as

$$\mathbf{w} \propto \frac{\int_{\Gamma_-}^{\Gamma_+} \psi \mathbf{W}_{xy} dz}{\int_{\Gamma_-}^{\Gamma_+} \psi dz}, \quad (3)$$

where  $\mathbf{W}_{xy}$  is the projection of the fluid or particle velocity onto the the coordinate plane  $(x, y)$ .

It should be noted that equation (2) corresponds to the integrated continuity equation (ICE) originally proposed by Corpetti *et al.* (2002) under the assumption that the radiance is proportional to an integral of the fluid density across the measurement volume (see §2.1.3 for details). Although the ICE model proposed by Corpetti *et al.* (2006) is theoretically valid only for transmittance imagery, the authors have obtained accurate results for PIV measurements, which are now rigorously justified by the recent derivation of the projected motion equation by Liu & Shen (2008) leading to equation (2). The experimental evaluation of this method has shown good agreement with hot-wire measurements for a mixing layer and the wake of a circular cylinder. The numerical examination of the technique with the VSJ standard base image has indicated that the ICE equation provides the best results especially in case of out of plane component (see §5.1). Close examination of equation (2) shows that the physics-based optical flow model is composed of a term  $\partial_t I + \mathbf{w} \cdot \nabla I$  representing brightness constancy, while the term  $I \operatorname{div} \mathbf{w}$  accounts for the non-conservation of the brightness function due to loss of particles caused by non null out of plane component.

Note that the above physics-based optical flow equations does not take into account specific phenomenon like for instance spatiotemporal varying illumination of the laser which can easily be included with additional models of brightness variation (Haussecker & Fleet, 2001). This issue can also be tackled with robust cost functions presented in §4.3.

Finally, we point out that the data models described by equations (1) and (2), or equations (6) and (9) in the following sections, constitute variational models. Their validity cease to hold for long range displacements. In this case it is more reliable to use an integrated data model. Assuming a constant velocity of a point between two successive frames,

the model defines a first order differential equation that can be straightforwardly integrated:

$$\frac{dI(\mathbf{x}(t), t)}{dt} \Big|_{t=u} = -I(\mathbf{x}(u), u) \operatorname{div} \mathbf{w}(\mathbf{x}(u), u) \quad \forall u \in [t, t+1],$$

leading to the non-linear data model

$$\forall \mathbf{x}, I_2(\mathbf{x} + \mathbf{d}(\mathbf{x})) \exp(\operatorname{div} \mathbf{d}(\mathbf{x})) - I_1(\mathbf{x}) = 0, \quad (4)$$

where  $\mathbf{d}(\mathbf{x})$  denotes the displacement fields between images  $I_1(\mathbf{x}) = I(\mathbf{x}, t)$  and  $I_2(\mathbf{x} + \mathbf{d}) = I(\mathbf{x} + \mathbf{d}(\mathbf{x}), t + 1)$ . These models are usually linearized around current estimates and embedded into a multiresolution pyramidal image structure (see §4.4.1).

### 2.1.2 3D flow with volumic visualization or 2D flow

For laser sheet visualization of two-dimensional incompressible flows the connection between fluid flow and optical flow is straightforward under the assumption that the laser sheet is perfectly aligned with the flow and/or under the assumption that the field  $\Psi$  related to the visualizing medium is constant across the laser sheet. In this context, the out of plane component is zero, the optical flow is proportional to the velocity  $\mathbf{w} \propto \mathbf{W}_{xy}$ , hence is divergence free  $\operatorname{div} \mathbf{w} = 0$  and satisfies the scalar advection-diffusion equation

$$\partial_t I + \mathbf{w} \cdot \nabla I = D \nabla^2 I. \quad (5)$$

For volumic visualization of three-dimensional flows, like e.g. tomographic reconstruction, the optical flow  $\mathbf{w}$  is a certain average of the velocity field due to the imperfect reconstruction of the three-dimensional image. As a consequence the connection between fluid flow and optical flow is less straightforward than for the two-dimensional case, and is a promising direction for further research (see §6.2). With a three-dimensional perfect visualization of the flow, the estimated three-dimensional optical flow should obviously obey to the full Navier-Stokes equations, and the evolution of the three-dimensional images should follow a transport equation related to the physical transport law of the observed quantity (e.g. particle, concentration, density, temperature, ...). To a first approximation we will consider in the following that the optical flow  $\mathbf{w}$ , associated to three-dimensional flow or two-dimensional flow visualized respectively through volumic data or two-dimensional sheets, satisfies (5).

For PIV measurements the diffusion coefficient  $D = 0$  and the physics-based optical flow equation corresponds to well known optical flow constraint equation (OFC) accounting for the brightness constancy assumption,

$$\partial_t I + \mathbf{w} \cdot \nabla I = 0. \quad (6)$$

Equation (6) is the linear differential formulation of the matching formulation between two consecutive images also known as the *Displaced Frame Difference* (DFD):

$$\forall \mathbf{x}, I_2(\mathbf{x} + \mathbf{d}(\mathbf{x})) - I_1(\mathbf{x}) = 0. \quad (7)$$

The expression (7) leads to non linear equations which are always valid irrespective of the displacement range, whereas equation (6) is locally valid where the linearization of the intensity function provides a good approximation. This is only the case for small displacements and smooth photometric gradients. Furthermore, the resulting systems are not solvable in photometrically uniform image regions.

In computer vision for the estimation of rigid or quasi-rigid body motion other photometric invariants, than the intensity itself, have been proposed like the conservation of the luminance gradient  $\nabla I_2(\mathbf{x} + \mathbf{d}) = \nabla I_1(\mathbf{x})$  (Tretiak & Pastor, 1984; Brox *et al.*, 2004), or from successive gaussian filtering  $g_{\sigma_j} * I_2(\mathbf{x} + \mathbf{d}) = g_{\sigma_j} * I_1(\mathbf{x})$  (Weber & Malik, 1995), where  $*$  stands for the convolution product.

### 2.1.3 3D flow with altimetric or transmittance imagery

When the observed luminance function relates to the fluid density, one can rely on the corresponding continuity equation to obtain a meaningful brightness variation model. Neglecting mass exchanges via vertical motions at surface boundaries, we consider the following ICE model (Integrated Continuity Equation):

$$\partial_t \left( \int \rho dz \right) + \mathbf{w} \cdot \nabla \left( \int \rho dz \right) + \left( \int \rho dz \right) \operatorname{div} \mathbf{w} = 0, \quad (8)$$

where  $\mathbf{w}$  stands now for a density weighted average of the general 3D motion field along the vertical axis.

This model provides a valid invariance condition for altimetric imagery of compressible flows (Héas *et al.*, 2007a) or for transmittance imagery of compressible fluids (Fitzpatrick, 1988). In cases where the assumption  $I \propto \int \rho dz$  holds, the ICE data model provides a way to take into account mass changes observed in the image plan by associating two-dimensional divergence to brightness variations and reads like equation (2). For long range displacements integration of (2) gives equation (4). This model has been applied to water-vapor and infrared atmospheric satellite images (Corpetti *et al.*, 2002) and to particle images (Corpetti *et al.*, 2006). A similar model has been also defined for Schlieren images (Arnaud *et al.*, 2006). This technique allows to visualize the variation of the fluid density through refraction of a light beam.

Recently, for atmospheric wind measurement applications, this model has been justified—under the assumption of negligible vertical velocities at surface boundaries—through pressure difference image maps (Héas *et al.*, 2007a). The model has been extended to recover the vertical component of velocities,  $w$ , at the surface boundaries of altimetric atmospheric pressure layers (Héas *et al.*, 2008)

$$\frac{dh}{dt} + h \operatorname{div} \mathbf{w} = g[\rho w]_s^+, \quad (9)$$

where  $h$  corresponds to observed differences of pressure and the lower and upper surface boundaries are denoted by  $s^-$  and  $s^+$ . For long range displacements integration of (9) yields

$$h_2(\mathbf{x} + \mathbf{d}) - h_1(\mathbf{x}) \exp(-\operatorname{div} \mathbf{d}) = g \frac{[\rho w]_{s^-}^{s^+}}{\operatorname{div} \mathbf{d}} (\exp(\operatorname{div} \mathbf{d}) - 1), \quad (10)$$

which for vanishing divergence of the horizontal motion fields becomes

$$h_2(\mathbf{x} + \mathbf{d}(\mathbf{x})) - h_1(\mathbf{x}) = g[\rho w]_{s^-}^{s^+}. \quad (11)$$

## 2.2 Optical flow and correlation

In this section we analyse the physical assumptions underlying model-based measurements techniques described above and classical correlation technique. We indicate that the correlation technique involves intrinsic assumptions giving rise to accuracy limits of the method for motion estimation. To provide a simple explanation of this behaviour we shall consider, for simplicity, the DFD model embedded in a local estimation scheme described in 3.1.

The displacement field between two consecutive images can be determined by minimizing the square of the DFD model

$$\mathbf{d}(\mathbf{x}) = \arg \min_{\mathbf{d}} \sum_{\mathbf{r} \in \mathcal{W}(\mathbf{x})} (I_2(\mathbf{r} + \mathbf{d}) - I_1(\mathbf{r}))^2 \quad (12)$$

where  $\mathcal{W}(\mathbf{x})$  is the interrogation window. Since  $I_1$  does not depend on  $\mathbf{d}$ , the displacement field reads

$$\mathbf{d}(\mathbf{x}) = \arg \min_{\mathbf{d}} \sum_{\mathbf{r} \in \mathcal{W}(\mathbf{x})} (I_2(\mathbf{r} + \mathbf{d})^2 - 2I_2(\mathbf{r} + \mathbf{d})I_1(\mathbf{r})). \quad (13)$$

Examination of this equation indicates that the minimization of the square of the DFD model includes the correlation between the displaced image  $I_2$  and the image  $I_1$ . The displacement field estimated with the DFD is thus equivalent to the displacement field obtained through a correlation maximization when the quantity  $\sum_{\mathbf{r} \in \mathcal{W}(\mathbf{x})} I_2(\mathbf{r} + \mathbf{d})^2$  does not depend on  $\mathbf{d}$ . This condition assumes a constant brightness energy contained in the displaced interrogation window whatever the displacement and the point location, i.e.

$$\forall \mathbf{d}, \sum_{\mathbf{r} \in \mathcal{W}(\mathbf{x})} I_2(\mathbf{r} + \mathbf{d})^2 \approx \text{constant}. \quad (14)$$

For PIV images this condition is clearly met for homogeneous particle seeding and sufficiently large interrogation window. Based on a mathematical analysis of the correlation, this conclusion has also been drawn by [Gui & Merzkirch](#)

(2000) when comparing the square of the DFD, therein called MQD method, with several correlation-based algorithms.

Since equation (12) is the ideal physics-consistent measure of fit of the displacement field to the data image –for two-dimensional flow or volumic imagery of three-dimensional flows– the classical correlation provides biased estimations for non homogeneous particle seeding. The occurrence of this critical phenomenon is locally strengthened when considering small interrogation windows, region with large velocity gradients or scalar image. On the contrary the square of the DFD intrinsically allows to cope with smaller interrogations areas, high particle density and scalar images. This simple analysis clearly shows that the classical correlation behaves as a poor model which does not take into account the particle image pattern. As a consequence, a correlation goodness of fit exhibits accuracy limits. Furthermore, for laser sheet three-dimensional flows visualization the correlation “model” hides the effect of intensity variations due to the out-of-plane component leading to limited achievable accuracy ([Nobach & Bodenschatz, 2009](#)), whereas the physics-based model (4) take into account this phenomenon.

## 2.3 Aperture problem

Unlike the nonlinear equation (4) and (7), the variational linear equations (2) and (6) does not suffice to compute image motion. For instance the formulation (6) merely links the temporal variation of the luminance function to the component of the velocity vector normal to the iso-intensity curves (level lines of the image function)

$$\mathbf{w}(\mathbf{x})^\perp = -\frac{\partial_t I(\mathbf{x})}{\|\nabla I(\mathbf{x})\|} \cdot \frac{\nabla I(\mathbf{x})}{\|\nabla I(\mathbf{x})\|}.$$

As a consequence, motion estimation of linear moving structures is ill-posed (see Figure 1). Motion estimation is thus intrinsically linked in a way or another to the definition of windowing functions or to the adjunction of additional spatial constraints or regularization terms. This is referred to in the literature as the *aperture problem*. Furthermore, we point out that non-linear equation (4) and (7), and the variational equations (2) and (6) do not allow to estimate motion in homogeneous image regions, and are sensitive to noise.

## 3 Basic motion estimation schemes

Optical flow equations alone do not suffice to compute image motion. Additional constraints have to be used in order to define well-posed motion estimation problems. The type of these constraints depends on the way motion is represented, parametric or nonparametric, leading to different families of approaches. They include correlation methods and the Lucas Kanade estimator, and optical flow methods.



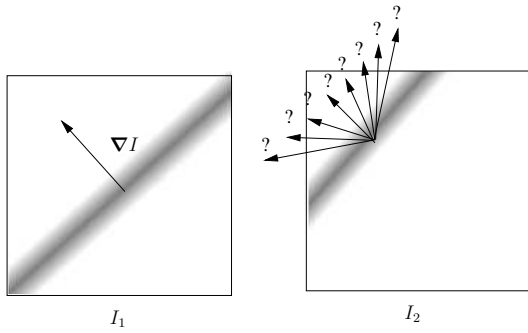


Fig. 1 Schematic illustration of the aperture problem

Both families of approaches are described in §3.1 and in §3.2.

### 3.1 Parametric representation and local or semi-local estimation

Parametric motion representations allow to consider additional relations linking the luminance function to the parameters. These relations are required to hold either on disjoint local spatial supports, or globally on the whole image domain.

#### 3.1.1 Local disjoint spatial supports: correlation, “block matching” and “Lucas and Kanade”

These methods belong to region-based techniques. Their general principle consists in considering a set of windows  $\mathcal{W}(\mathbf{x})$  centered on different points of the image grid. A parametric motion field is then estimated on each of these windows on the basis of a criteria defined classically as the minimization of the negative cross-correlation or as the minimization of a metric like the absolute and the squared differences. A locally constant displacement field is sought over a discrete state space,

$$\mathbf{d}(\mathbf{x}) = \arg \min_{\mathbf{d}} \sum_{\mathbf{r} \in \mathcal{W}(\mathbf{x})} \mathcal{C}(I_2(\mathbf{r} + \mathbf{d}), I_1(\mathbf{r})).$$

The similarity functions,  $\mathcal{C}$ , used usually are the absolute value or the square of the DFD, or correlation functions. The squared differences is commonly used in computer vision for the motion estimation of rigid or quasi-rigid body. It has been suggested by Gui & Merzkirch (1996) for PIV measurements and named minimum quadratic difference (MQD) method. However, as discussed in §2.1.1 the DFD model, which relies on the brightness constancy assumption, is valid either for three-dimensional flows visualized through volumic data or for two-dimensional flow. For laser-sheet three-dimensional flow visualization, this model has to be replaced by the model (4) accounting for particle loss and three-dimensional effects.

*Correlation* Efficient implementations of the correlation functions are based on the Fast Fourier transform (FFT) and rely on the property that the transform of the correlation of two signals

$$I_1 \circ I_2 \equiv \sum_{\mathbf{r} \in \mathcal{W}(\mathbf{x})} I_1(\mathbf{r}) I_2(\mathbf{r} + \mathbf{d})$$

is given by the product of transform of the first signal with the conjugate transform of the second signal

$$\mathcal{F}(I_1 \circ I_2) = \mathcal{F}(I_1) \mathcal{F}^*(I_2).$$

The correlation function is then computed in the Fourier domain over local windows centered in the same point in both images. Strictly speaking, this approach is only defined for periodic signals. For non-periodic signals, these methods may be sensitive to long-range displacements.

Another correlation method, defined in the phase space, relies on the shift invariance property of the Fourier transform

$$\mathcal{F}(I(\mathbf{x} + \mathbf{w}, t)) = \mathcal{F}(I(\mathbf{x} + \mathbf{w}, 0)) \delta(\mathbf{k}^T \mathbf{w} + \phi),$$

where  $\delta$  denotes the Dirac mass and  $\mathbf{k}$  and  $\phi$  designate respectively the spatial and temporal frequencies. This equation shows that a feature moving with a velocity  $\mathbf{w}$  belongs to a subspace of the Fourier domain. For  $2D + t$  image sequences, this is a plane through the origin of the 3D Fourier domain, given by the argument of the  $\delta$  function

$$\phi = -\mathbf{k}^T \mathbf{w}.$$

The slope of the plane defines the velocity vector:  $\mathbf{w} = -\nabla_{\mathbf{k}} \phi$ . Let us note that the determination of this vector is ambiguous when the signal spectrum does not sufficiently cover the corresponding plane. This is the case when the image signal in the spatial domain is either homogeneous or has a single dominant direction. We retrieve then the aperture problem in the frequency domain.

When both images  $I_1$  and  $I_2$  are linked by a global translation and a photometric invariance assumption (*i.e.*,  $I_1(\mathbf{x} - \mathbf{w}_0) = I_2(\mathbf{x})$ ), the Fourier transform of image  $I_2$  is given by:  $\mathcal{F}I_2 = \hat{I}_2(\mathbf{k}) = \hat{I}_1(\mathbf{k}) \exp(-i\mathbf{k}^T \mathbf{w}_0)$  and therefore:

$$\frac{\hat{I}_2(\mathbf{k}) \hat{I}_1^*(\mathbf{k})}{|\hat{I}_1|^2} = \exp(-i\mathbf{k}^T \mathbf{w}_0).$$

The spatial representation of this normalized spectral correlation coefficient (obtained through inverse Fourier transform) is characterized by a displaced dirac mass  $\delta(\mathbf{x} - \mathbf{w}_0)$ , which allows to determine the displacement  $\mathbf{w}_0$  (Feroosh *et al.*, 2002; Jähne, 1993).

Methods based on these principles are largely used for their rapidity and their simplicity. Applications include image indexing, video compression, velocity measurement in experimental fluid mechanics (PIV methods (Adrian, 1991)), and atmospheric wind field estimation in meteorology. In

experimental fluid mechanics, different challenges from 2001 to 2005 have led to very efficient and reliable variations of the technique. The main variations concern Gaussian correlation peak approximation for sub-pixel accuracy, and refined multi-pass correlation (Adrian, 2005; Raffel *et al.*, 2007).

*Block matching* A second family methods is based on mean squares brightness conservation (6) and a local parametric motion model of  $p$  degrees of freedom defined over a spatial domain. In the case of a linear motion representation defined as  $\mathbf{w}(\mathbf{x}) = P(\mathbf{x})\boldsymbol{\theta}$ , where  $P(\mathbf{x})$  is a  $2 \times p$  matrix which depends on the chosen parameterization<sup>4</sup>, motion estimation amounts to determine the vector  $\hat{\boldsymbol{\theta}}$  such that :

$$\hat{\boldsymbol{\theta}} = \arg \min_{\boldsymbol{\theta}} \int_{\mathcal{W}(\mathbf{x})} g(\mathbf{x} - \mathbf{r}) [\partial_t I(\mathbf{r}) + \nabla I(\mathbf{r})^T P(\mathbf{r})\boldsymbol{\theta}]^2 d\mathbf{r} \quad (15)$$

where  $g(\mathbf{x})$  is a windowing function, typically a Gaussian, which gives more weight to the window center. This expression may be written as a convolution product in the spatio-temporal domain :

$$\min_{\mathbf{v}} \mathbf{v}^T \underbrace{[g_{\sigma} * (P^T \nabla_3 I \nabla_3 I^T P)]}_{\mathcal{T}} \mathbf{v}, \quad (16)$$

with  $\mathbf{v} = (u, v, 1)^T$  and where  $g_{\sigma}$  stands here for a  $(2D + t)$  kernel, and  $\nabla_3 I$  denotes the spatio-temporal gradients of the luminance function ( $\nabla_3 I \equiv (\partial_x I, \partial_y I, \partial_t I)^T$ ).

*Lucas and Kanade* For a discrete 2D case and a constant motion model, the least squares solution of the expression (15) constitutes the estimator proposed by Lucas & Kanade (1981) :

$$\mathbf{w}(\mathbf{x}) = -\mathcal{T}^{-1} \int_{\mathcal{W}(\mathbf{x})} g_{\sigma}(\mathbf{x} - \mathbf{r}) \partial_t I(\mathbf{r}) \nabla I(\mathbf{r}) d\mathbf{r} \quad (17)$$

$$\text{with } \mathcal{T} = \int_{\mathcal{W}(\mathbf{x})} g(\mathbf{x} - \mathbf{r}) \nabla I(\mathbf{r}) \nabla I^T(\mathbf{r}) d\mathbf{r}.$$

It is easy to see that matrix  $\mathcal{T}$  is ill-conditioned for small photometric gradients (uniform image regions) or when the photometric contours are structured along a single direction in  $\mathcal{W}(\mathbf{x})$  ( $\forall \mathbf{r} \in \mathcal{W}(\mathbf{x}), \nabla I(\mathbf{r}) \simeq \mathbf{c}$ ). We retrieve here again the aperture problem (see §2.3).

This local scheme (17) has been applied to flow field measurements by Okuno & Nakaoka (1991), Sugii *et al.* (2000) and Yamamoto & Uemura (2009), and called either gradient method or spatio-temporal derivative method. The

<sup>4</sup>  $P(s) = Id$  for a constant model;  $P(s) = \begin{bmatrix} 1 & x & y & 0 & 0 & 0 \\ 0 & 0 & 0 & 1 & x & y \end{bmatrix}$  for an affine model and  $P(s) = \begin{bmatrix} 1 & x & y & 0 & 0 & 0 & x^2 & xy \\ 0 & 0 & 0 & 1 & x & y & xy & y^2 \end{bmatrix}$  for a quadratic model.

technique has been extended for the recovery of the velocity fields and its derivative, and has been assessed on PIV images by Alvarez *et al.* (2008).

Solutions to this least squares estimation problem through an eigenvalue analysis (16) comprises the so called *structure tensor* approaches (Bigün *et al.*, 1991; Jähne, 1993). The matrix  $\mathcal{T}$  being symmetric, there exists an orthogonal matrix  $Q$  such that

$$\min_{\mathbf{v}} \mathbf{v}^T \mathcal{T} \mathbf{v} = \min_{\mathbf{y}} \mathbf{y}^T Q^T \mathcal{T} Q \mathbf{y} = \min_{\mathbf{y}} \mathbf{y}^T \Lambda \mathbf{y}, \quad (18)$$

with  $\mathbf{y} = Q^T \mathbf{v}$  and  $\Lambda = \text{diag}(\lambda_1, \lambda_2, \lambda_3)$ , the diagonal matrix containing the eigenvalues. The solution of (18) subject to the constraint  $\|\mathbf{v}\| = 1$  is given by the eigenvector  $\mathbf{e}^{(\lambda_3)} \equiv (e_x^{(\lambda_3)} \ e_y^{(\lambda_3)} \ e_t^{(\lambda_3)})^T$  corresponding to the smallest eigenvalue  $\lambda_3$ <sup>5</sup>. When the matrix has full rank and is well conditioned both components of the velocity vector are given by:

$$\mathbf{w}(\mathbf{x}) = (u(\mathbf{x}), v(\mathbf{x})) = \frac{\mathbf{e}_x^{(\lambda_3)}}{e_t^{(\lambda_3)}}.$$

The eigenvalues enable further analysis. For instance, if all three eigenvalues are close to zero, no motion can be estimated. This happens if the spatial support underlying the least-squares estimation corresponds to a homogeneous image region. A single eigenvalue different from zero indicates that the luminance gradient has a single dominant spatial direction, and again only the normal velocity vector can be estimated (aperture problem):

$$\mathbf{w}^{\perp} = e_t^{(\lambda_1)} \frac{\mathbf{e}_x^{(\lambda_1)}}{\|\mathbf{e}_x^{(\lambda_1)}\|}.$$

Finally, if three eigenvalues are different from zero, there is no coherent apparent motion on the considered support due to a motion discontinuity.

The formulation of the approaches (15) and (17) in the Fourier domain leads to a plane regression problem. A set of spatiotemporal directional filters, for instance Gabor filters, enables a direct estimation of the plane parameters (Fleet & Jepson, 1990; Heeger, 1988; Jähne, 1993; Simoncelli, 1993; Yuille & Grzywacz, 1988).

### 3.1.2 Globalized local smoothing: Ritz method

The previous techniques comprise local independent motion estimators. While this locality favourably limits error propagation, it prevents taking into account global physical constraints. One way to extend the previous approaches consists

<sup>5</sup> This corresponds to the total least squares solution. Given a  $(m \times p)$  homogeneous linear system  $M\mathbf{x} = 0$ , a total least squares solution minimizes  $\|M\mathbf{x}\|^2$  subject to the constraint  $\|\mathbf{x}\| = 1$  in order to avoid the trivial solution.

in seeking for a solution of the form

$$\mathbf{w}_\phi(\mathbf{x}) \equiv \sum_{i=1}^N c_i \phi_i(\mathbf{x}),$$

where the coefficients  $c_i$  are unknown and the *shape functions*,  $\phi_i(\mathbf{x})$ , are fixed. These functions have compact spatial support and are chosen on *a priori* grounds of requirements of given application area. The shape function basis should be complete, that is the approximation error  $\|\mathbf{w}_\phi - \mathbf{w}\|$  converges toward zero for  $N \rightarrow \infty$ .

The method consists in estimating the coefficients  $c_i$  by minimizing

$$J(\mathbf{w}_\phi) = \int_{\Omega} F(\mathbf{x}, \mathbf{w}_\phi, \frac{\partial \mathbf{w}_\phi}{\partial \mathbf{x}}, \dots) d\mathbf{x} + \int_{\Gamma} G(s, \mathbf{w}_\phi, \dots) ds, \quad (19)$$

where  $\Omega$  define the spatial domain with boundary  $\Gamma = \partial\Omega$ , in which one seeks for the solution. In the case of a quadratic functional, the minimizer of  $J$  with respect to  $\mathbf{c}$  is determined by the following conditions:

$$\frac{\partial J}{\partial \mathbf{c}} = \begin{bmatrix} \frac{\partial J}{\partial c_1} \\ \vdots \\ \frac{\partial J}{\partial c_N} \end{bmatrix} = K\mathbf{c} + \mathbf{f} = 0.$$

If the functional degree with respect to  $\mathbf{w}_\phi$  and its derivative is not larger than 2, the so-called *stiffness matrix*  $K$  is symmetric:

$$K = \begin{bmatrix} \frac{\partial^2 J}{\partial c_1^2} & \dots & \frac{\partial^2 J}{\partial c_N \partial c_1} \\ \vdots & & \vdots \\ \frac{\partial^2 J}{\partial c_1 \partial c_N} & \dots & \frac{\partial^2 J}{\partial c_N^2} \end{bmatrix}.$$

This method has been applied for functions  $F$  defined either from the OFC (Srinivasan & Chellappa, 1998; Wu *et al.*, 2000) or from the DFD (Musse *et al.*, 1999; Szeliski & Shum, 1996). In the former case, the system to be solved is linear, and the shape functions are ‘‘cosine window’’ functions (Srinivasan & Chellappa, 1998) and a particular wavelet function basis (Cai-Wang wavelets) defined from B-splines of order 4 (Wu *et al.*, 2000). In the latter case, both methods make use of hierarchical B-splines. As numerical iterative methods were used a Gauss-Newton solver (Musse *et al.*, 1999), a Conjugate Gradient technique (Srinivasan & Chellappa, 1998) and the Levenberg-Marquardt method (Szeliski & Shum, 1996; Wu *et al.*, 2000). Standard boundary conditions (Dirichlet or Neumann) were associated to those different approaches. Basis functions defined on Thin plate splines (Duchon, 1977; Wahba, 1990) have been also intensively used in computer vision registration application (Arad *et al.*, 1994; Bookstein, 1989) or for medical image applications (Rohr *et al.*, 1999). The main problem of these

methods consists to determine an adequate spatial subdivision of the image domain in terms of the basis functions, and to allow for strong discontinuities of the solution that are important in some applications of image sequence processing.

For fluid flow image analysis, an estimator of this kind, relying on the Helmholtz decomposition, has been proposed in Cuzol & Mémén (2005, 2008). An example of the results obtained by the latter estimator is shown in figures 12 and 13. The representation on which it relies is further described in §4.5.2. Let us recall that the Helmholtz decomposition separates the velocity field into a divergent free and a curl free component (assuming null boundary conditions at infinity), the *solenoidal* and *irrotational* motion components

$$\mathbf{w} = \mathbf{w}_{irr} + \mathbf{w}_{sol}, \quad (20)$$

where  $\text{div} \mathbf{w} = \text{div} \mathbf{w}_{irr}$  and  $\text{curl} \mathbf{w} = \text{curl} \mathbf{w}_{sol}$ . It is well known that these two fields can be represented by two potential functions, the stream function and the velocity potential

$$\mathbf{w} = \nabla \psi + \nabla^\perp \phi. \quad (21)$$

These potential functions are solutions of two Poisson equations (known for the divergent free component as the Biot-Savart integral):

$$\Delta \psi = -\text{curl} \mathbf{w}, \quad \Delta \phi = \text{div} \mathbf{w}. \quad (22)$$

As a consequence, they may be expressed by the convolution with the corresponding Green functions. Taking gradients of these convolution products and slightly mollifying the associated singular kernels with Gaussian convolution gives rise to appropriate basis functions for the curl and the divergence, known in the computational fluid dynamics community as *vortex particles* (Chorin, 1973; Cottet & Koumoutsakos, 2000; Leonard, 1980). The resulting irrotational and solenoidal motion fields are a linear combination of these basis functions. The solenoidal components, for instance, reads

$$\begin{aligned} \mathbf{w}_{sol}(\mathbf{x}) &\approx \sum_{i=0}^p \gamma_i K^\perp * g_{\epsilon_i}(\mathbf{z}_i - \mathbf{x}) \\ &\approx \sum_{i=0}^p \gamma_i K_{\epsilon_i}^\perp(\mathbf{z}_i - \mathbf{x}), \end{aligned} \quad (23)$$

where  $K_{\epsilon_i}^\perp$  is the kernel function obtained by convolving the orthogonal gradient of the Green kernel,  $K^\perp$ , with a Gaussian function,  $g_{\epsilon_i}$ . The coordinates,  $\mathbf{z}_i$ , denotes the location of the  $i$ th basis functions. A similar representation of the irrotational component using likewise, source particles and the Biot-Savart integral associated to the divergence map (equ.22) can be readily obtained. Using this parameterization together with a photometric model enables to define



a least squares estimation problem for the unknown coefficients. The estimation of the basis function parameters, on the other hand, i.e. standard deviation of the gaussian kernel and location of the basis function, is more involved and leads to a nonlinear system to be solved numerically. A solution based on a two-stages process is proposed in Cuzol *et al.* (2007). Code corresponding to this estimator is freely available and can be downloaded on the web site of the FLUID project (<http://fluid.irisa.fr>).

For fluid flows analysis and fluid motion estimation from image sequences spline basis functions minimizing a second order div-curl constraint (see equation 25 section 4.1) have been proposed (Amodei & Benbourhim, 1991; Suter, 1994; Isambert *et al.*, 2008). Compared to vortex particles these basis functions have the drawback to impose strictly an empirical kinematics constraint that is not built from physical considerations.

### 3.2 Nonparametric representation and non-local estimation

A third basic class of motion estimation schemes considers velocity fields  $\mathbf{w} = (u, v)^\top$  as general *functions*, rather than as individual velocity estimates at discrete locations (Section 2.1.2), or as polynomial vector fields defined in a local region (Section 3.1). These methods are classically called optical flow or global approaches.

Given an image function  $I(\mathbf{x}, t)$ , we estimate  $\mathbf{w}$  for an arbitrary but fixed point of time  $t$  by minimizing the functional

$$E(\mathbf{w}) = \int_{\Omega} \left\{ (\nabla I \cdot \mathbf{w} + \partial_t I)^2 + \lambda (\|\nabla u\|^2 + \|\nabla v\|^2) \right\} d\mathbf{x} . \quad (24)$$

The variational approach (24) has been introduced by Horn & Schunck (1981) in the field of computer vision. The objective criterion combines two terms: A so-called *data term* that enforces the conservation assumption by minimizing the squared-norm of the linearized DFD (see §2.1.2), and a so-called *smoothness-term* or *regularizer* that enforces spatial smoothness of the minimizing velocity field  $\mathbf{w}$ , to a degree as specified by the *regularization parameter*  $\lambda$  weighting the two terms.

Specific properties of the basic variational approach (24) include:

- Under weak conditions, namely  $L^2$ -independence of the two component functions of the spatial image gradient  $\nabla I(\mathbf{x})$ , the functional (24) is strictly *convex* (Schnörr, 1991). Because the functional additionally is *quadratic* in  $\mathbf{w}$ , discretizing the variational equation

$$\frac{d}{d\tau} E(\mathbf{w} + \tau \tilde{\mathbf{w}}) \Big|_{\tau=0} = 0, \quad \forall \tilde{\mathbf{w}},$$

with piecewise linear finite elements, or the corresponding Euler-Lagrange system of equations with finite differences, yields a sparse linear system that is positive definite. It can be conveniently and efficiently solved using standard iterative numerical techniques.

- The resulting velocity estimate  $\mathbf{w}$  is *dense* even if the image function  $I$  is homogeneous, i.e.  $\nabla I \approx 0$ , in some image regions. As before in the two previous subsections, imposing smoothness on the solution is necessary here, too, to obtain a well-defined estimation approach. The nonparametric approach (24) is *less restrictive*, however, than assuming locally constant velocity fields (Section 2.1.2), or than prescribing a polynomial form within local regions (Section 3.1).

The application of the basic variational approach (24) to PIV has been studied in Ruhnau *et al.* (2005) where more details on the discretization are given. Moreover, in this paper, a multi-scale representation of the input image data  $I$  obtained by lowpass-filtering and subsampling was used to compute *long-range* motions up to 15 pixels per frame, which is not possible when working with (24) on the finest sampling grid only (see §4.4.1 for details on this multi-scale representation).

Although providing good results with PIV data, the basic variational approach of Horn & Schunck (1981) was originally proposed for rigid or quasi-rigid motion. Therefore some knowledge of the physics of fluid need to be used to improve the measurement accuracy. For laser-sheet visualization of three-dimensional flow equation (2) must be used as a data term. Modifications of the regularization term are addressed in §4 (higher-order and physics-based regularization) and in §4.3 robust norms are described for removing outliers and for preserving discontinuities of the velocity fields. Concerning numerical approaches relevant to (24), we refer to Bruhn *et al.* (2006) and references therein.

## 4 Specific motion estimation schemes

The motion estimators presented so far combine a physics-based model of brightness variation related to the observed flow with additional spatial constraints expressed through parametric motion models or smoothness functionals. This last ingredient was mainly designed in the context of rigid luminance patterns that are typical for image sequences of natural scenes.

Regarding fluid flow velocity fields, it is natural to ask for dedicated approaches taking into account physically more plausible smoothing functionals, to provide more accurate velocity measurements. This section addresses these issues.

#### 4.1 Higher-order regularization

Regarding the estimation of fluid flows with spatially varying, strong gradients, an apparent weak point of the basic variational approach (24) is the use of *first-order* derivatives in the regularization term. As a consequence, the value for the parameter  $\lambda$  has to be chosen quite small in order not to underestimate gradients of the flow. On the other hand, this means that data noise influencing the first term in (24) cannot be effectively suppressed through regularization.

As a remedy, numerous researchers studied *higher-order* regularizers, in particular terms involving second-order spatial derivatives of the flow, of the form

$$\int_{\Omega} \left\{ \|\nabla \operatorname{div} \mathbf{w}\|^2 + \|\nabla \operatorname{curl} \mathbf{w}\|^2 \right\} dx . \quad (25)$$

We refer to Corpetti *et al.* (2002); Yuan *et al.* (2007) and references to earlier work therein. Further motivation of (25) is given by the generalized Helmholtz decomposition of the space of square-integrable vector fields into gradients and curls (Girault & Raviart, 1986)

$$L^2(\Omega)^2 = \nabla H^1(\Omega) \oplus \nabla^\perp H_0^1(\Omega) , \quad (26)$$

that is valid in *two* dimensions  $\Omega \subset \mathbb{R}^2$  if the domain  $\Omega$  is simply connected. In (26), the symbol  $\nabla^\perp$  denotes the vector-valued curl-operator  $(\partial_{x_2}, -\partial_{x_1})^\top$  for two-dimensional scalar fields, and  $H^1(\Omega)$  denotes the Sobolev space of square-integrable functions whose gradients are square-integrable as well.  $H_0^1(\Omega)$  denotes the subspace of those functions of  $H^1(\Omega)$  that vanish on the boundary  $\partial\Omega$ .

Using higher-order derivatives has consequences for discretization. Unlike the approach (24) where standard textbook schemes apply and lead to numerically stable computations, the regularizer (25) yields a complex Euler-Lagrange system of equations and natural boundary conditions whose proper discretization is far from being trivial. The decomposition of vector fields  $\mathbf{w} \in L^2(\Omega)^2$  into an irrotational and a solenoidal component due to (26) highlights this issue as well. For example, it is well known from computational fluid dynamics that imposing the incompressibility constraint  $\operatorname{div} \mathbf{w} = 0$  in connection with standard discretization schemes may result in  $\mathbf{w} = \mathbf{0}$ , due to the so-called locking effect (cf., e.g., Brezzi & Fortin (1991)).

As a consequence, more sophisticated discretization schemes have to be applied. Examples include the Mimetic Finite Differences framework developed by Hyman & Shashkov (1997b) and Hyman & Shashkov (1997a) or alternatively the construction of adequate Finite Element spaces, see Hiptmair (1999) and references therein to earlier work. The primary objective of this line of research is to make hold true orthogonal decompositions of spaces of vector fields and the basic integral identities of vector analysis *after* discretization. This is an essential prerequisite for stable numerical computations.

Furthermore, vector field decompositions help to analyze variational approaches. For example, it is shown in Yuan *et al.* (2007) that when using the regularizer (25) together with the data term in (24), one should include an additional boundary term in order to remove an inherent sensitivity against noise in the image data that cannot be regularized by increasing the weight of (25).

Comparisons of the approaches of Corpetti *et al.* (2002) and Yuan *et al.* (2007) with correlation technique are discussed in §5.1. Results obtained with these higher-order regularization techniques are displayed in figures 4 to 7 for particle and scalar images.

#### 4.2 Physical constraints and controlled estimation

The variational approaches (24) and (25) are *unconstrained*. In experimental fluid dynamics, this appears to be unnatural because the flow to be estimated is governed by the Navier-Stokes equation. Consequently, one may ask for approaches that combine flow measurements from image sequences with the constitutive equations of fluid dynamics. This basic problem opens a line of long-term research at the end of which one may expect computational schemes to be available that consistently combine the evaluation of experimental data and simulations.

The reader may argue that physical constraints are less useful in the prevailing two-dimensional measurement scenarios. For example, even the incompressibility condition  $\operatorname{div} \mathbf{w} = 0$  does not strictly hold for flows observed in a planar section through a volume, due to out-of-plane particle movements. While this is true, it should not hamper to clarify this basic problem, that is becoming more and more relevant as soon as novel measurement techniques delivering three-dimensional flow measurements become available.

A basic approach that in some sense provides the simplest setting for a meaningful combination of flow measurements with physical constraints has been recently proposed in Ruhnau & Schnörr (2007). The variational approach comprises the objective functional

$$\begin{aligned} E(\mathbf{w}, p, \mathbf{f}, \mathbf{g}) = & \int_{\Omega} \left\{ (\nabla I \cdot \mathbf{w} + \partial_t I)^2 + \alpha \|\mathbf{f}\|^2 \right\} dx \\ & + \gamma \int_{\partial\Omega} \|\partial_t \mathbf{g}\|^2 ds , \end{aligned} \quad (27)$$

and the constraint system

$$-\mu \Delta \mathbf{w} + \nabla p = \mathbf{f} \quad \text{in } \Omega , \quad (28a)$$

$$\operatorname{div} \mathbf{w} = 0 \quad \text{in } \Omega , \quad (28b)$$

$$\mathbf{w} = \mathbf{g} \quad \text{on } \partial\Omega . \quad (28c)$$

Estimated flows  $\mathbf{w}$  have to satisfy the Stokes system (28) and to fit the observed image motion by minimizing the data

term (i.e. the first term) in (27). The connection between the physical constraints and the objective function is established by virtue of distributed vector fields  $\mathbf{f}, \mathbf{g}$  inside  $\Omega$  and on the boundary  $\partial\Omega$ , respectively, that control the estimated flow  $\mathbf{w}$  through the right-hand side of (28) so as to minimize (27). Regularization terms of the control variables are included into the objective function, with small weights  $\alpha$  and  $\gamma$ , in order to render the whole approach mathematically well-posed.  $\partial_t \mathbf{g}$  denotes the componentwise tangential derivative of  $\mathbf{g}$  along the boundary  $\partial\Omega$ .

The following basic observations can be made:

- The approach (27), (28) is more specific than (25) (complemented with the same data term), due to the constraint system (28). This is an advantage if the physical constraints hold true. In fact, if  $\mathbf{w}$  is actually governed by the Stokes equation, the variables  $p, \mathbf{f}$  become *physically significant*: Pressure and forces can be directly estimated from the image data  $I(\mathbf{x}, t)$  (Ruhnau & Schnörr, 2007);
- Using the data term (6) the approach (27) was originally devised for two-dimensional flows but may also hold in a physical sense for three-dimensional flow with volumic visualization. In these cases, under the assumptions described in §2.1.2, the optical flow  $\mathbf{w}$  can satisfy the Stokes equation (28);
- In the case of turbulent flow  $\mathbf{w}$  where the Stokes equation is inadequate but the constraint (28b) still holds true, the approach (27), (28) still makes sense. This is because the control variables  $\mathbf{f}, \mathbf{g}$  are *free*. While they are no longer physically significant, they still control the flow  $\mathbf{w}$  so as to fit the turbulent measurements observed through the image data, by minimizing (27). In this connection, we point out that  $\mathbf{f} \propto \Delta \mathbf{w}$  in (28a) is proportional to second-order derivatives of  $\mathbf{w}$ . As a result, inclusion of  $\|\mathbf{f}\|^2$  into (27) leads to higher-order flow regularization as in (25), but in a physically more plausible way;
- Finally, observe that the equations (28) have the common form used in numerical simulations, and are kept separate from the functional (27) involving the data. This helps to rely on established numerical schemes developed in both communities.

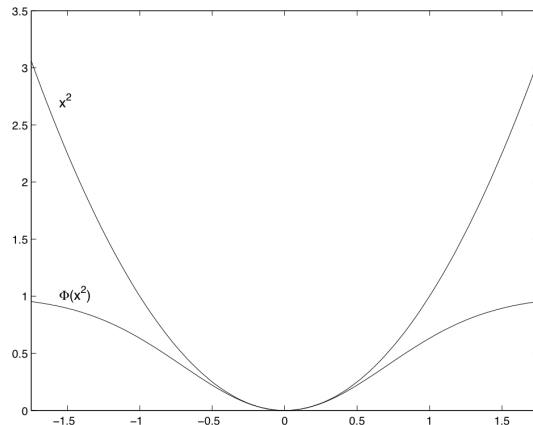
In Ruhnau & Schnörr (2007), the authors develop a gradient descent scheme for minimizing (27) subject to the constraints (28). To compute the gradient, the dependency of the variables  $\mathbf{w}, p$  on the controls  $\mathbf{f}, \mathbf{g}$  has to be taken into account. This can be done by additionally solving an auxiliary system of the same form as (28). A second major issue is to employ proper discretizations for  $\mathbf{w}$  and  $p$ . We refer to Ruhnau & Schnörr (2007), Gunzburger (2002) and Brezzi & Fortin (1991) for details.

### 4.3 Robust measures

Models of motion estimation described in §2.1 rely on assumptions that do not *strictly* hold true. Non-Gaussian noise, changes of illumination, and many other local situations that do not fit well the underlying model provide examples. To handle such deviations in the different energy terms of the functional, it is common to replace the  $L^2$  norm by a so called *robust* norm

$$\int_{\Omega} \rho(g(\mathbf{w})) d\mathbf{x}. \quad (29)$$

Such cost functions, originally introduced in the context of robust statistics (Huber, 1981), penalize large residual values less than quadratic functions do (Fig. 2). Under suit-



**Fig. 2** Graph of a robust cost function ( $\rho(x) = 1 - \exp(-\frac{x^2}{\sigma^2})$ ) compared to a quadratic function.

able conditions (mainly concavity of  $\Phi \equiv \rho(\sqrt{x})$ ), it can be shown that any multidimensional minimization problem of the form

$$\arg \min_{\mathbf{w}} \int \rho[g(\mathbf{w})] d\mathbf{x}, \quad (30)$$

can be turned into a corresponding dual minimization problem (Huber, 1981; Geman & Reynolds, 1992)

$$\arg \min_{\mathbf{w}, z} \int [Mz g(\mathbf{w})^2 + \psi(z)] d\mathbf{x}. \quad (31)$$

This new optimization problem involves additional *auxiliary variables* acting as *weight functions*  $z(\mathbf{x})$  with value in the range  $[0, 1]$ . Function  $\psi$  is a continuously differentiable function, depending on  $\rho$ , and  $M \equiv \lim_{v \rightarrow 0+} \Phi'(v)$ . Optimization is carried out alternating minimizations with respect to  $\mathbf{w}$  and  $z$ . If the function  $g$  is affine, minimization with respect to  $\mathbf{w}$  becomes a standard *weighted least*

squares problem. For  $\mathbf{w}$  being fixed, the best weights have the following closed form (Geman & Reynolds, 1992):

$$\hat{z}(\mathbf{x}) = \frac{\rho'[g(\mathbf{w})]}{2Mg(\mathbf{w})} = \frac{1}{M}\Phi'[g(\mathbf{w})^2]. \quad (32)$$

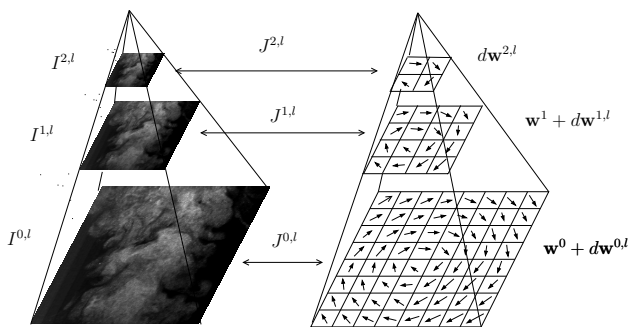
Experimentally, the use of these functions either for the data model or for the regularization term has led to better performance in a range of computer vision application (Black & Rangarajan, 1996; Mémmin & Pérez., 2002). For fluid flows, such functions have been mainly used for the data term (Corpetti *et al.*, 2006; Héas *et al.*, 2007a). They allow to introduce a localized discrepancy measure between the data model and the actual measurements. At points where such a deviation occurs, only the remaining terms of the functional (*i.e.* regularization) are involved. These functions have been also used together with a classification map to enable the estimation of atmospheric layered data (Héas *et al.*, 2007a). In that case only data belonging to a predefined layer are taken into account for motion estimation.

#### 4.4 Multiscale estimation

##### 4.4.1 Multiresolution scheme

Velocity measurements from particle image sequence present inherent difficulties for variational methods. The variational formulation is limited to small displacements (smaller than the shortest wavelength present in the image), and therefore is typically embedded into a multiresolution scheme to handle large displacements.

These models are usually linearized around current estimates and embedded into a multiresolution pyramidal image structure obtained from successive low-pass filtering and subsampling of the image sequence (Fig. 3). The estimation process is then incrementally conducted from “coarse to fine” along the multiresolution structure (Bergen *et al.*, 1992; Enkelmann, 1988; Mémmin & Pérez, 1998; Papenberg *et al.*, 2006).



**Fig. 3** Coarse to fine resolution with multiresolution representation of the images (Heitz *et al.*, 2008).

##### 4.4.2 Correlation-based variational scheme

As mentioned above, the estimation of long-range displacements with optical flow techniques is usually embedded into multiresolution data structures and successive linearizations around the current estimate. These incremental schemes allow to tackle in a Gauss-Newton type manner the nonlinear optimization associated with the nonlinear integrated brightness constancy assumption, such as the DFD data model. In this scheme, major components of the displacements are computed at coarse resolution levels corresponding to low-pass filtered and subsampled versions of the original images. However, when the motion of thin or small structures differs significantly from the motion of larger regions in their neighborhood, the estimator most likely fails to correctly determine the motion of these high frequency photometric structures. This is particularly true for meteorological images, where for instance mesoscale structures such as cirrus filaments may exhibit large displacements that are completely different from the atmospheric layer motion at a lower altitude. The same problem appears with particle images. Due to the successive down sampling of the image, small particles with large velocities are smoothed out, thus leading to a loss of information and erroneous velocity measurements. *As a result, these problems lead to poor performance of traditional multiresolution dense motion estimator.*

Correlation techniques have proven to be more robust with respect to the estimation of long-range displacements. Nevertheless, as they rely on parametric spatial motion models, these techniques tend to larger estimation errors in regions with a high motion variability. Furthermore, they provide sparser motion fields that must be interpolated and post-processed in order to compute dense vorticity maps or related differential motion quantities.

In order to benefit from the best properties of both variational dense estimators and correlation techniques, an immediate idea is to combine these two methods. Sugii *et al.* (2000) combined sequentially cross correlation technique and local variational approach (Lucas and Kanade method see §3.1) to achieve high sub-pixel accuracy with higher spatial resolution. Seemingly, for three-dimensional motion estimation, Alvarez *et al.* (2009) initialized the estimation with cross correlation and improved the results with a global variational approach (Horn and Schunck method see §3.2).

To cope with the multiresolution issue, Héas *et al.* (2007a) for meteorological satellite images and Heitz *et al.* (2008) for fluid mechanics particle images, proposed a collaborative correlation-variational approach combining the robustness of correlation techniques with the high spatial density of global variational methods. Both techniques can be formal-



ized as the minimization of the following functional:

$$\begin{aligned} & \int_{\Omega} \mathcal{F}(I, \bar{\mathbf{w}} + \check{\mathbf{w}}) \\ & + \beta \int_{\Omega} \sum_{i=1}^p h^i g_{\sigma}(\mathbf{x}^i - \mathbf{x}) \|\mathbf{w}_c(\mathbf{x}^i) - \bar{\mathbf{w}}\|^2 d\mathbf{x} \quad (33) \\ & + \alpha \int_{\Omega} \|\nabla \text{curl}(\bar{\mathbf{w}} + \check{\mathbf{w}})\|^2 + \|\nabla \text{div}(\bar{\mathbf{w}} + \check{\mathbf{w}})\|^2 d\mathbf{x}, \end{aligned}$$

where  $\bar{\mathbf{w}}$  denotes the large scale components of the motion, whereas  $\check{\mathbf{w}}$  represents finer scales. Function  $\mathcal{F}$  stands for any chosen photometric data model, and  $\mathbf{w}_c$  denotes a finite set of  $p$  correlation vectors located at points  $\mathbf{x}^i$ . Optimization is carried out in two separate steps. Setting initially to zero the finer motion component, the large-scale components are obtained on the basis of (i) a photometric data model, (ii) a goodness-of-fit term including the correlation vectors that is weighted both by a Gaussian function to spatially enlarge the correlation vector's influence and a correlation confidence factor, and (iii) a second-order div-curl regularizer. Then, in turn, by freezing the large scale components, the finer scales are estimated on the basis of the div-curl regularizer and the photometric data model. In this second step, the correlations vectors are not anymore involved. Unlike the multiresolution approach, this scheme relies on a single representation of the full resolution data and avoids the use of successive lowpass filtering of the image data.

This technique has been evaluated with synthetic images of particles dispersed in a two-dimensional turbulent flow, and with real world turbulent wake flow experiments (see §5.2).

#### 4.5 Utilizing temporal context

The motion estimation techniques described so far only rely on kinematic constraints and provide independent instantaneous motion field measurements for each frame. All these estimates along the time axis are independant from each other, hence consistency of spatiotemporal motion field trajectories cannot be enforced. To do this in a physically plausible way, it is essential to consider motion estimation as a dynamical process along the time-resolved image sequence and to impose corresponding constraints.

Such a process can be set up in two distinct ways. The first approach extends the traditional dense estimation method by adding to the objective functional an additional goodness-of-fit term comparing the current estimate by the predicted motion based on previous estimates and a specified evolution law. The second approach implements the motion estimation issue as a tracking problem. In this case a sequence of motion fields is estimated using the complete set of image data available. The estimation is formulated as a dynamical filtering problem in order to recover complete velocity field

trajectories on the basis of a dynamical law and noisy incomplete image measurements. This strategy can be implemented through a recursive stochastic technique or in terms of a global variational formulation.

In the following sections we explore these two alternatives in some more details and give pros and cons of each of them.

##### 4.5.1 Local temporal context and iterative estimation

A variational approach realizing the first option discussed above has been recently worked out in [Ruhnau et al. \(2007\)](#) for three-dimensional flow with volumic visualization or for the two-dimensional case, in [Héas et al. \(2007a\)](#) for altimetric imagery of three-dimensional flows and in [Heitz et al. \(2008\)](#) for laser-sheet three-dimensional flow visualization of particles or scalar.

*3D flow with volumic visualization or 2D flow* Let  $[0, T]$  denote the local time interval between two subsequent frames of the image sequence  $I(\mathbf{x}, t)$ . The evolution of the flow  $\mathbf{w}$  to be estimated from  $I(\mathbf{x}, t)$  is given by the vorticity transport equation

$$\frac{D}{Dt} v = \partial_t v + \mathbf{w} \cdot \nabla v = \nu \Delta v, \quad v(\mathbf{x}, 0) = v_0, \quad (34)$$

where  $v_0 = \text{curl } \mathbf{w}|_{t=0}$  denotes the vorticity of the flow estimated for the first image frame. Solving this equation numerically in the time interval  $[0, T]$ , that is performing *simulation*, we compute  $v_T = v(\mathbf{x}, T)$  and interpret this as an *prediction* of the vorticity of the flow observed through the second frame of the image sequence  $I(\mathbf{x}, t)$  at time  $t = T$ .

At time  $t = T$ , we have again access to image sequence data. Hence we minimize a motion estimation functional that takes into account the observed data in terms of equation (6), and regularizes the flow by comparison with the predicted vorticity  $v_T$ .

$$E(\mathbf{w}) = \int_{\Omega} \left\{ (\partial_t I + \nabla I \cdot \mathbf{w})^2 + \lambda (v - v_T)^2 + \kappa \|\nabla v\|^2 \right\} d\mathbf{x}, \quad (35a)$$

$$\text{subject to} \quad \text{div } \mathbf{w} = 0, \quad \text{curl } \mathbf{w} = v. \quad (35b)$$

Computing the minimizer  $\mathbf{w}$  we obtain the initialization  $v = \text{curl } \mathbf{w}$  for (34), to be solved for the subsequent time interval. For details of the non-trivial discretization of both (34) and (35), we refer to [Ruhnau et al. \(2007\)](#).

The following observations can be made:

- Originally proposed for the two-dimensional case this approach may also hold for volumic three-dimensional flow visualization. In these configurations, under the assumptions described in §2.1.2, the optical flow  $\mathbf{w}$  estimated with (35) satisfies the vorticity transport equation (34);



- Besides enforcing similarity of  $v = \text{curl } \mathbf{w}$  and the prediction  $v_T$  in (35), the flow  $\mathbf{w}$  is only regularized through first-order spatial derivatives of *vorticity*. As a consequence, the variational approach (35) again generalizes the *higher-order* regularization approach (25) in a physically meaningful way;
- Additionally, the iterative interplay between prediction (34) and estimation (35) utilizes *spatiotemporal* context in an on-line manner, because for each computation just two frames of the sequence are used. The “memory” of the overall approach depends on the value of the parameter  $\lambda$  in (35). This on-line property is in sharp contrast to the commonly employed way in image processing to exploit spatiotemporal context in a batch-processing mode by treating the time-axis as a third spatial variable (Weickert & Schnörr, 2001);
- Finally, we point out the simulation (34) and estimation (35) are *separate* processes from the viewpoint of numerical analysis. This keeps the overall design modular and avoids re-inventing the wheel.

*3D flow with laser sheet visualization or altimetric imagery*  
A different but related technique has been proposed for the recovery of atmospheric motion layer by Héas *et al.* (2007a) and extended by Heitz *et al.* (2008) for 2D image sequences of particles dispersed in 3D turbulent flows. In these works, the predicted vorticity is replaced by a predicted velocity,  $\mathbf{w}_p$ , obtained from the numerical integration of a filtered simplified vorticity-divergence formulation of shallow water models. For laser-sheet three-dimensional flow visualization the simplified vorticity-divergence transport equations reads

$$\begin{cases} v_t + \mathbf{w} \cdot \nabla v + v\zeta = (\nu_s + \nu)\Delta v \\ \zeta_t + \mathbf{w} \cdot \nabla \zeta + \zeta^2 - 2|J| = (\nu_s + \nu)\Delta \zeta, \end{cases} \quad (36)$$

where  $\zeta = \text{div } \mathbf{w}$ ,  $|J|$  is the determinant of the Jacobian matrix of variables  $(u, v)$ ,  $\nu_s = (C\Delta_x)^2|\xi|$  is the the enstrophy-based subgrid scale model proposed by Mansour *et al.* (1978), and  $C$  the Lilly’s universal constant equal to 0.17.

Here, we minimize a motion estimation functional that takes into account the observed data in terms of equation (2), and regularizes the flow by comparison with the predicted velocity  $\mathbf{w}_p$ ,

$$\begin{aligned} E(\mathbf{w}) = \int_{\Omega} \left\{ (\partial_t I + \nabla I \cdot \mathbf{w} + I \text{div } \mathbf{w})^2 + \lambda \|\mathbf{w} - \mathbf{w}_p\|^2 \right. \\ \left. + \kappa (\|\nabla v\|^2 + \|\nabla \zeta\|^2) \right\} d\mathbf{x}. \end{aligned} \quad (37)$$

The prediction term applies here only at a large scale, and the quadratic goodness of fit term only involves a large scale component of the unknown velocity field. The small scale unknown components are computed in an incremental setup

and depends only on the data model and the smoothing term used in the estimator. This term plays the role of a predictor of a large scale motion component and thus avoids the use of a multiresolution scheme in order to cope with long range displacements. Interested readers will find the implementation details and experimental comparison results in Héas *et al.* (2007a) and in Heitz *et al.* (2008). The improvements brought by this spatio-temporal regularization are discussed in §5.3 and shown in figures 10 and 11.

Note that as indicated in §2.1.1 the optical flow  $\mathbf{w}$  estimated with (37) is proportional to the path-averaged velocity of fluid across the laser sheet and hence does not satisfy exactly the full Navier-Stokes equations. However, in the present approach, since the Navier-Stokes equations have been simplified with shallow flow assumption across the laser-sheet, the optical flow  $\mathbf{w}$  satisfies (36).

#### 4.5.2 Non-local temporal context

In the following sections we briefly present the two dynamic filtering alternatives that implement a global dynamical consistency of the estimated velocity fields sequences. The first one relies on a stochastic methodology whereas the second one ensues from optimal control theory.

*Recursive estimation through stochastic filtering* In order to estimate optimally the complete trajectory of an unknown state variable from a sequence of past image frames, we formulate the problem as a stochastic filtering problem. Resorting to stochastic filters consists in modeling the dynamic system to be tracked as an hidden Markov state process. The goal is to estimate the value of the random Markovian process – also called *state process* and denoted  $\mathbf{x}_{0:n} = \{\mathbf{x}_t\}_{t \in [0,n]}$  – from realizations of the observation process. The set of measurements operated at discrete instants are denoted  $\mathbf{z}_{1:n} = \{\mathbf{z}_1, \mathbf{z}_2, \dots, \mathbf{z}_n\}$ . The system is described by (a) the distribution of the state process at initial time  $p(\mathbf{x}_0)$ , (b) a probability distribution modeling the evolution (*i.e.* the dynamics) of the state process  $p(\mathbf{x}_k | \mathbf{x}_{t < k})$  and (c) a likelihood (representing the *measurement equation*)  $p(\mathbf{z}_k | \mathbf{x}_k)$  that links the observation to the state. In this framework, the *posterior* distribution, *i.e.* the law of the state process knowing the set of observations, carries the whole information on the process to be estimated. More precisely, as tracking is a causal problem, the distribution of interest is the law of the state given the set of past and present observations  $p(\mathbf{x}_k | \mathbf{z}_{1:k})$ , known as *filtering distribution*. The problem of recursively estimating this distribution may be solved exactly through a Bayesian recursive solution, named the optimal filter (Gordon *et al.*, 1993). This solution requires to compute integrals of huge dimension. In the case of linear Gaussian models, the Kalman filter (Anderson &

Moore, 1979) gives the optimal solution since the distribution of interest  $p(\mathbf{x}_k | \mathbf{z}_{1:k})$  is Gaussian. In the nonlinear case, an efficient approximation consists in resorting to sequential Monte Carlo techniques (Arulampalam *et al.*, 2002; Doucet *et al.*, 2000; Gordon *et al.*, 1993). These methods consist in approximating  $p(\mathbf{x}_k | \mathbf{z}_{1:k})$  in terms of a finite weighted sum of Dirac masses centered in elements of the state space, named particles. At each discrete instant, the particles are displaced according to a probability density function named *importance function* and the corresponding weights are updated using the system's equations. A relevant expression of this function for a given problem is essential to achieve an efficient and robust particle filter. Interested readers may find different possible choices in Arnaud & Mémmin (2007); Doucet *et al.* (2000).

Such a technique has been applied to the tracking of a solenoidal field described as a combination of vortex particles (Cuzol & Mémmin, 2005, 2008). The motion field in that work is described through a set of random variables  $\mathbf{x}_i, i = 1, \dots, p$ :

$$\mathbf{w}(\mathbf{x}) \approx \sum_{i=0}^p \gamma_i K_{\epsilon_i}^\perp(\mathbf{x}_i^{\text{sol}} - \mathbf{x}), \quad (38)$$

where  $K_{\epsilon_i}^\perp$  is a smoothed Biot-Savart kernel obtained by convolving the orthogonal gradient of the Green kernel associated to the Laplacian operator with a smoothing radial function. The vector  $\mathbf{x} = (\mathbf{x}_i, i = 1, \dots, p)^T$  represents the set of vortex particle locations and the coefficient,  $\gamma_i$ , their strength. The dynamics of these random variables is defined through a stochastic interpretation of the vorticity transport equation Chorin (1973):

$$d\mathbf{x}_t = \mathbf{w}(\mathbf{x}_t)dt + \sigma dB_t, \quad (39)$$

where  $B$  stands for a  $2p$ -dimensional Brownian motion with independent components, and associated to the diffusion coefficient  $\sigma = \sqrt{2\nu}$ . The evolution of the vortex set,  $\mathbf{x}$ , between two frame instants  $k$  and  $k + 1$  and for a discretization step  $\Delta t$ , is represented by the following Markov transition equation:

$$p(\mathbf{x}_j^k | \mathbf{x}_{j-\Delta t}^k) \sim \mathcal{N}(\mathbf{x}_{j-\Delta t}^k + \mathbf{w}(\mathbf{x}_{j-\Delta t}^k)\Delta t, 2\nu\Delta t\mathbb{I}_{2p}), \quad (40)$$

where  $\mathbb{I}_{2p}$  denotes the  $2p \times 2p$  identity matrix.

A sample of the trajectories generated between two frames are then weighted according to the likelihood  $p(\mathbf{z}_k | \mathbf{x}_k)$ . In this work, this density has been defined in terms of a reconstruction error measurement,  $\mathbf{z}_k$ , computed from the pair of images  $(I_k, I_{k+1})$ .

The results obtained with this technique for a two-dimensional turbulent flow are discussed in §5.3 and plotted in figures 12 and 13.

*Global estimation control approach* In this section, we present the second alternative for a dynamical filtering of noisy and incomplete data. This framework ensues from control theory and has been popularized in geophysical sciences where it is known as *variational assimilation* (Le-Dimet & Talagrand, 1986; Lions, 1971). Opposite to particle filtering, variational assimilation techniques have the advantage to enable a natural handling of high-dimensional state spaces. Before presenting further the adaptation of such a framework to motion estimation, let us describe the general notions involved.

As previously, the problem we are dealing with consists in recovering a system's state  $\mathbf{X}(\mathbf{x}, t)$  obeying a dynamical law, given some noisy and possibly incomplete measurements of the state. The measurements, in this context also called observations, are assumed to be available only at discrete points in time. This is formalized, for any location,  $\mathbf{x}$ , at time  $t \in [t_0, t_f]$ , by the system

$$\frac{\partial \mathbf{X}}{\partial t}(\mathbf{x}, t) + \mathbb{M}(\mathbf{X}(\mathbf{x}, t), c(t)) = 0 \quad (41)$$

$$\mathbf{X}(\mathbf{x}, t_0) = \mathbf{X}_0(\mathbf{x}) + \epsilon_n(\mathbf{x}), \quad (42)$$

where  $\mathbb{M}$  is a non-linear dynamical operator depending on a control parameter  $c(t)$ . We assume here that  $c(t) \in C$  and  $\mathbf{X}(t) \in \mathcal{V}$  are square integrable functions. The term  $\mathbf{X}_0$  is the initial vector at time  $t_0$ , and  $\epsilon_n$  is an (unknown) additive control variable of the initial condition. Furthermore, we assume that measurements of the unknown state,  $\mathcal{Y} \in \mathcal{O}$ , are available. These observations are measured through the non-linear operator,  $\mathbb{H} : C \rightarrow \mathcal{O}$ . The objective consists then to find an optimal control of low energy that leads to the lowest discrepancy between the measurements and the state variable. This leads to the minimization problem

$$\begin{aligned} \mathcal{J}(c, \epsilon_n) = & \frac{1}{2} \int_{t_0}^{t_f} \|\mathcal{Y} - \mathbb{H}(\mathbf{X}(c(t), \epsilon_n, t))\|_{R^{-1}}^2 dt \\ & + \frac{1}{2} \|\epsilon_n\|_{B^{-1}}^2 + \frac{1}{2} \int_{t_0}^{t_f} \|c(t) - c_0\|_{F^{-1}}^2 dt, \end{aligned} \quad (43)$$

where  $c_0$  is some expected value of the parameter. The norms  $\|\cdot\|_{R^{-1}}$ ,  $\|\cdot\|_{B^{-1}}$  and  $\|\cdot\|_{F^{-1}}$  are induced by the inner products  $\langle R^{-1}\cdot, \cdot \rangle_{\mathcal{O}}$ ,  $\langle B^{-1}\cdot, \cdot \rangle_{\mathcal{V}}$  and  $\langle F^{-1}\cdot, \cdot \rangle_C$ ,  $R$ ,  $B$  and  $F$  are covariances matrices of the observation space and state space. They are respectively related to the observations, the initial condition of the state variable and to the expected value of the control variable.

Regarding the minimization of the objective function, a direct numerical evaluation of the functional gradient computationally infeasible, because this would require to compute perturbations of the state variables along all the components of the control variables ( $\delta c, \delta \epsilon_n$ ) - *i.e.* to integrate the dynamical model for all perturbed components of the control variable, which is obviously not possible in practice.

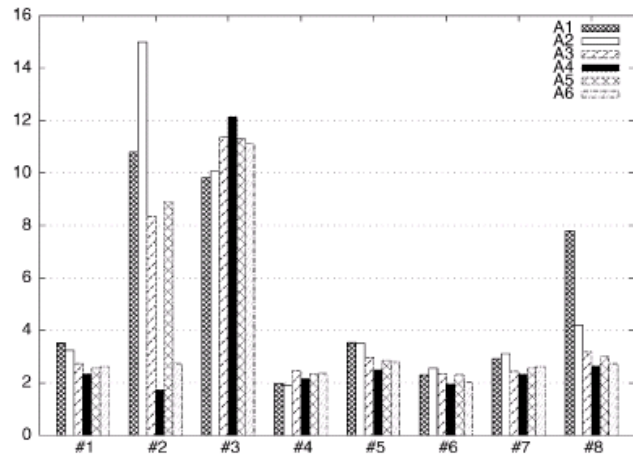
A solution to this problem consists to rely on an *adjoint formulation* (Le-Dimet & Talagrand, 1986; Lions, 1971). Within this formalism, the gradient functional is obtained by a forward integration of the dynamical system followed by a backward integration of an adjoint dynamical model. This adjoint model is defined by the adjoint of the discrete scheme associated to the dynamical system.

This technique has been recently applied to the estimation of fluid motion fields (Corpetti *et al.*, 2008; Héas *et al.*, 2007b; Papadakis & Mémin, 2008b; Papadakis *et al.*, 2007; Papadakis & Mémin, 2008a), and to the tracking of closed curves (Papadakis & Mémin, 2008b). These works rely either on a shallow water dynamical model or on a vorticity-velocity formulation. They associate motion measurements given by external motion estimators (Papadakis & Mémin, 2008b) or incorporates directly luminance data (Papadakis *et al.*, 2007; Papadakis & Mémin, 2008a). The first case provides a filtering technique that allows improving significantly the observed motion fields. The second technique constitutes a complete autonomous motion estimator that enforces dynamical coherence and a temporal continuous trajectory of the solution. Results obtained with this technique for two-dimensional turbulent flow are shown in figures 12 and 13. These approaches, compared to traditional motion estimator, enable to recover accurately a broad range of motion scales.

This technique has been also used recently to recover the parameters of a reduced dynamical system obtained from a POD-Galerkin techniques (D'Adamo *et al.*, 2007). Compared to traditional approaches this technique allows an improved accuracy and stability of the estimated reduced system. For a flow showing periodic behavior this method allows to de-noise experimental velocity fields provided by standard PIV techniques and to reconstruct a continuous trajectory of motion fields from discrete and unstable measurements.

## 5 Experimental results

In this section, we illustrate various aspects discussed in previous sections by experimental results, obtained for both computer-generated and real datasets. First, in Section 5.1, we focus on the effect of using higher-order regularization and robust norms. Next, in Section 5.2, we present first results of a variational approach that combines correlation measurements and regularization, as outlined below in Section 4.4.2. Finally, in Section 5.3, we present results of the currently most advances estimation schemes utilizing temporal context. For further experimental results and their discussion, we refer to the original papers cited in the respective sections 4.5 and 4.4.2.



**Fig. 4** Results from a validation experiment, based on VSJ synthetic images, comparing different combinations of data terms (OFC and ICE) associated with regularization term (1<sup>st</sup> order or 2<sup>nd</sup> order), and the influence of using a robust norm. The figure shows the relative  $L_1$  norm error obtained for eight standard configurations: compared to case 1, cases 2 and 3 yield large and small displacements respectively; cases 4 and 5 have dense and sparse particle concentration respectively; cases 6 and 7 contain constant and large particle size respectively; case 8 exhibits high out of plane velocities. Six algorithms are compared: **A1**, approach of Quénot *et al.* (1998); **A2** approach of Ruhnau *et al.* (2005); **A3**, robust multiresolution-multigrid Horn & Schunk approach of Mémin & Pérez (1998); **A4**, approach of Corpetti *et al.* (2006); **A5**, ICE + 1st order; **A6**, OFC + 2nd order. The best results are obtained with the ICE data term together with 2<sup>nd</sup> order div-curl regularization (Corpetti *et al.*, 2006).

### 5.1 First- and second-order regularization, robust norms

Throughout this section, we refer the reader to Sections 2 and 4 for descriptions of the approaches evaluated below.

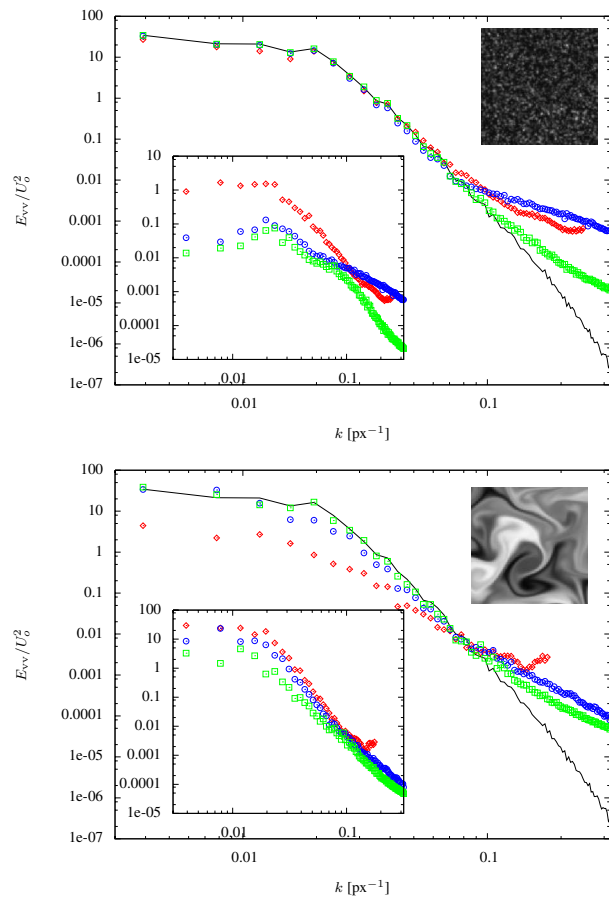
When the first efforts in correlation technique were proposed for PIV, different approaches based on image analysis were also developed to estimate fluid motion. Among those attempts Tokumaru & Dimotakis (1995) proposed a semi-local approach (Ritz method see section 3.1.2) –involving a parametric cubic model and insuring a global spatial consistency– appropriate for both scalar and particle images. The integral form (7) of the equation of motion (6) is employed in this method. Using dynamic programming Quénot *et al.* (1998) devised a global approach assuming the conservation of the luminance, with the dense displacement fields estimated being small, rectilinear, uniform and continuous. The proposed global approach uses the brightness constancy (6) as a data term. Dahm *et al.* (1992) introduced the concept of three-dimensional flow fields measurements based on scalar imaging measurements. The proposed technique based on the direct inversion of the scalar transport equation was later refined in Su & Dahm (1996) with an integral minimization formulation including the scalar transport equation, the continuity equation and a first order regularization (global approach see section 3.2).

More recently, [Ruhnau et al. \(2005\)](#) evaluated the prototypical variational approach of [Horn & Schunck \(1981\)](#) (see §3.2) with particle image pairs commonly used in PIV. To estimate long-range motion, they carefully designed a coarse-to-fine implementation. Their experimental evaluation showed that the prototypical approach performs well in noisy real-world applications. [Corpetti et al. \(2002, 2006\)](#) improved this approach by taking into account the features of fluid flows. A data term based on the continuity equation (2), was used for estimating the apparent 2D motion of 3D flows, and second order regularization (see §4.1) was proposed to enable the estimation of vector fields with pronounced divergent and rotational structures.

Figure 4 presents a comparison of the error for different combinations of data terms (OFC or ICE) and regularization terms (1<sup>st</sup> order or 2<sup>nd</sup> order). [Corpetti et al. \(2006\)](#) showed that using the ICE model (2) as a more physically-grounded alternative to OFC leads to better results for the case of large out of plane motions. As for the regularization, only the 2<sup>nd</sup> order div-curl scheme is able to preserve the level of vorticity and divergence. Figure 4 also indicates that a robust norm applied to the data term significantly improves the results (compare approach A2 with approach A3).

*Influence of Discretization* Using the mimetic finite difference method, [Yuan et al. \(2007\)](#) proposed a novel variational scheme based on a second order div-curl regularizer that includes the estimation of incompressible flows as a special case. This new scheme has been assessed both for particle and for scalar synthetic image sequences, generated from direct numerical simulations (DNS) of two-dimensional turbulence. Compared to the correlation technique of Lavision (Davis 7.2) and the second-order method of [Corpetti et al. \(2006\)](#), the higher-order approach of [Yuan et al. \(2007\)](#) yields an enlarged dynamic range with accurate measurements at small and large scales. This behaviour is displayed in figure 5 showing the better estimated spectrum and the lowest spectrum of the error obtained with the technique of [Yuan et al. \(2007\)](#). This higher accuracy is also observed in figure 6 with vorticity maps and vector fields. With scalar image sequences the differences between the approach of [Yuan et al. \(2007\)](#) and the others is more pronounced, especially at large scales, where as expected the correlation technique completely failed (see Fig. 7).

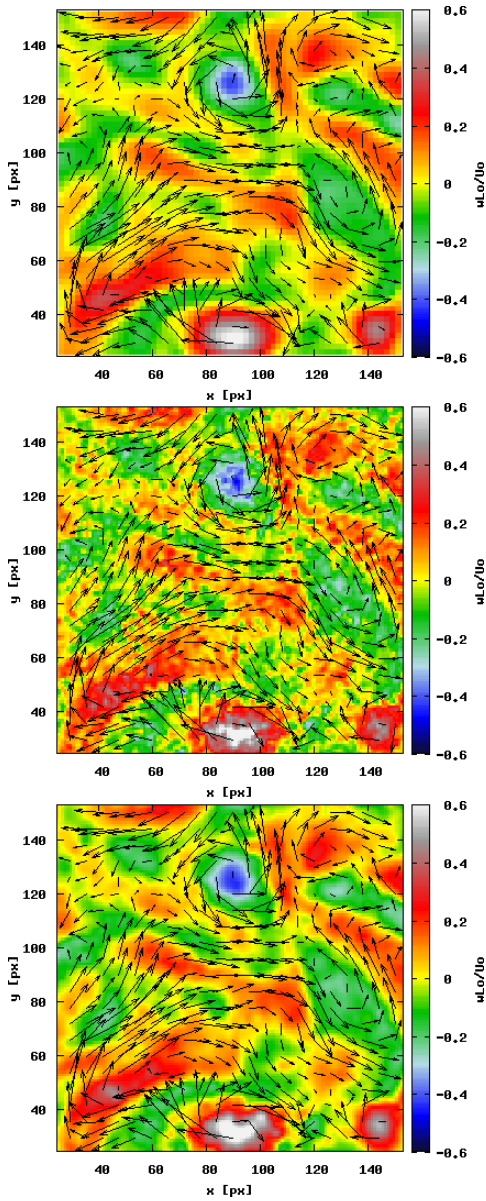
*Vector field density* It is interesting to mention that global variational approaches (see §3.2) return dense vector fields, i.e. one vector per pixel. From the metrological point of view this behaviour is expected with scalar images since each pixel exhibits an information of motion, however it may be surprising for particle-based optical measurements in which the particle-image density is roughly of the order of 0.01 particles per pixel. The fact that global variational



**Fig. 5** Spectrum of the vertical velocity component in a two-dimensional turbulent flow. Top, synthetic particle image sequence; Bottom, synthetic scalar image sequence. Black line, DNS reference; Red symbols, correlation approach; Blue symbols, [Corpetti et al. \(2006\)](#) approach; Green symbols, [Yuan et al. \(2007\)](#) approach. Spectra of the error for the same data are shown in inset.

techniques provide information of motion beyond the spatial scale associated to the particle density is obtained thanks to the regularization operator involved to tackle the aperture problem. Note that the regularization is conducted from the beginning of the minimization process –on the contrary to the post-processing used with correlation approaches– and complement the information of the data term with spatial or spatiotemporal coherence. In this context, the use of physical models as regularization operators can improve the estimations of the velocity fields down to the smallest scales. In addition when the regularizer is physically sound the adjustment of the weighting parameter is inferred with the minimization process ([Héas et al., 2009a](#)). The monotonically vanishing error spectra (difference between the estimation and the DNS solution) shown in inset of the figure 5 indicate that the dense information is consistent with the reference down to the smallest scales. This behaviour can also be observed in [Stanislas et al. \(2008\)](#) with the results of the third PIV Challenge for the global approach of [Corpetti et al.](#)



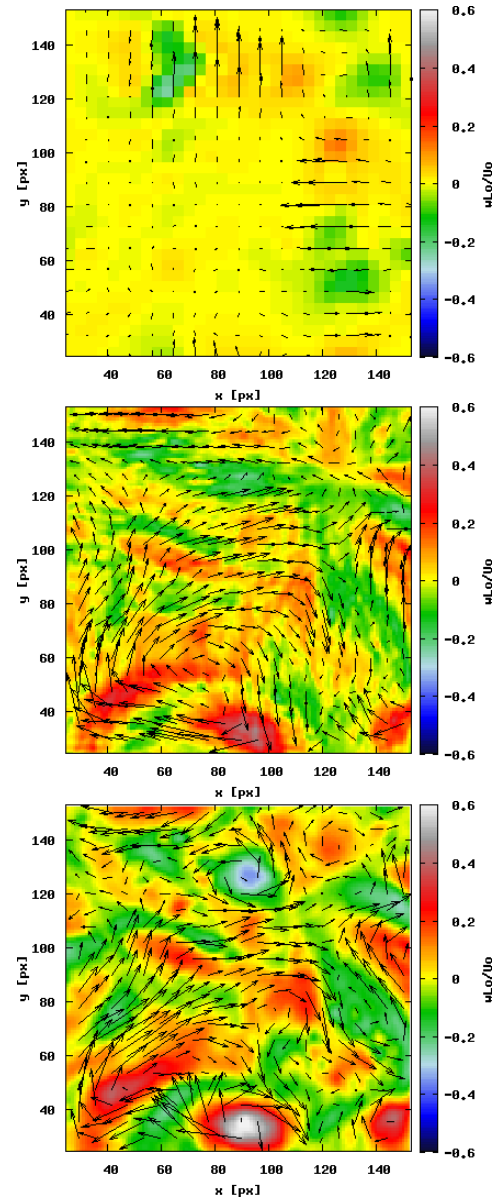


**Fig. 6** Vorticity maps and vector fields in a two-dimensional turbulent flow obtained with a synthetic particle image sequence. From top to bottom, correlation approach, [Corpetti et al. \(2006\)](#) approach and [Yuan et al. \(2007\)](#) approach.

(2006). In the following (see §5.3) it is shown that the use of spatiotemporal regularizer like the Navier-Stokes equations can significantly improve the accuracy on the whole dynamic range.

## 5.2 Correlation-based variational scheme

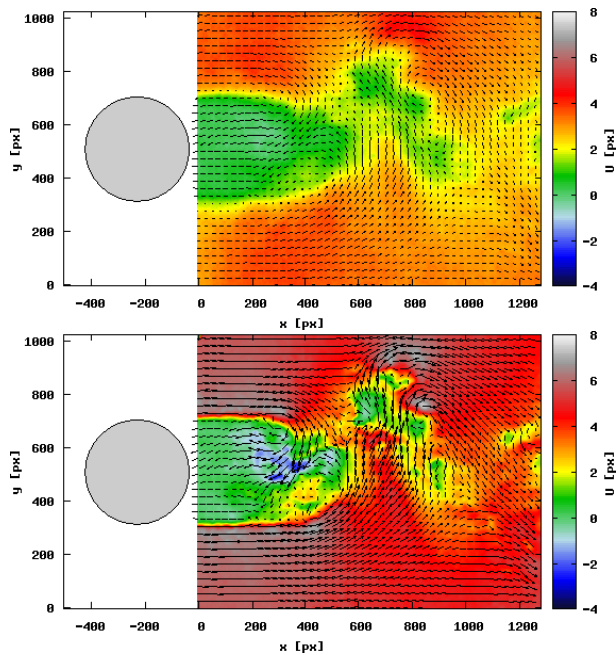
The combined correlation-variational scheme proposed by [Heitz et al., 2008](#)) for laser-sheet three-dimensional flow visualization, described in §4.4.2, was evaluated with synthetic images of particles dispersed in a two-dimensional



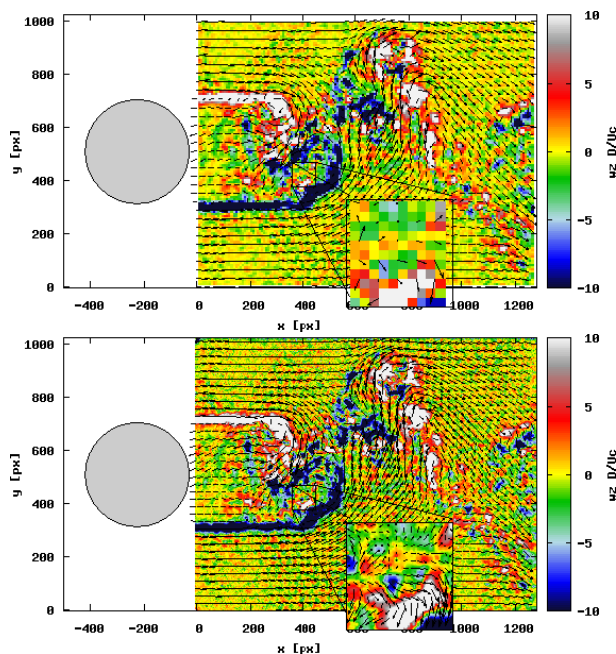
**Fig. 7** Vorticity maps and vector fields in a two-dimensional turbulent flow obtained with a synthetic scalar image sequence. From top to bottom, correlation approach, [Corpetti et al. \(2006\)](#) approach and [Yuan et al. \(2007\)](#) approach.

turbulent flow, and with real world turbulent wake flow experiments. Figure 8 shows for particles images, the comparison of results obtained with a multiresolution technique and the collaborative approach. One advantage of the latter method is that, due to the global scheme including regularization, 'basic' correlation estimations are sufficient. Furthermore, compared to correlation technique, the combined correlation variational scheme yields dense information as observed in figure 9.





**Fig. 8** Instantaneous vector field with horizontal velocity color map measured with real images of particles in near the wake of a circular cylinder at  $Re = 3900$ . Top, optical-flow approach (Corpetti *et al.*, 2006); Bottom, combined correlation-variational approach (Heitz *et al.*, 2008).

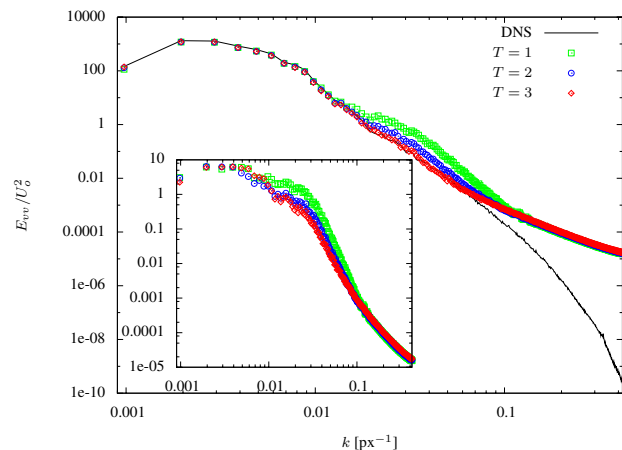


**Fig. 9** Instantaneous vector field with vorticity colormap measured with real images of particles in the near wake of a circular cylinder at  $Re = 3900$ . Top, correlation approach; Bottom, combined correlation-variational approach (Heitz *et al.*, 2008).

### 5.3 Spatiotemporal regularization

Following the route to incorporate explicit physical prior knowledge into variational motion estimation schemes, that was suggested by Ruhnau *et al.* (2007) in connection with PIV and by Héas *et al.* (2007a) for satellite imagery, Heitz *et al.* (2008) adapted and evaluated the latter technique to estimate dynamically consistent large eddy apparent motion of laser sheet 3D turbulent flow visualization (see §4.5.1 for details of the methods).

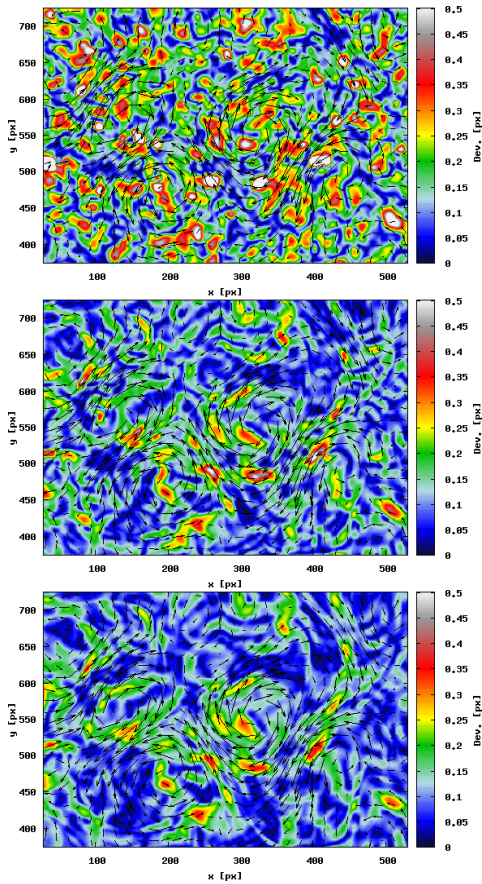
Applied on synthetic particle images generated with DNS of two-dimensional turbulent flows this method enlarges the dynamic range resolved as a function of the time (see in Fig.10 the estimated spectrum). The use of spatiotemporal regularization enhances the accuracy, particularly for noisy image sequences. As observed in figure 11 through the map of the deviation from the exact velocity modulus, the technique improves the estimation of the main vortices as a function of the time. As a consequence, this approach is especially well-suited for analyzing time resolved particle image sequences which exhibit noise due to CMOS sensors. Regarding the implementation of this iterative scheme, we point out that the computational costs of the simulation of the dynamic equation (34) are negligible in comparison to the variational estimation (35).



**Fig. 10** Energy spectra showing the enlargement of the dynamic range as a function of the time when using spatiotemporal regularization (Heitz *et al.*, 2008). Spectra of the error for the same data are shown in inset. Measurements obtained with synthetic particle images generated from DNS of two-dimensional turbulent flows.

Spatiotemporal consistency of the measurements can be improved with non local context approaches taking into account the whole image sequence with recursive estimations (see §4.5.2).

Cuzol *et al.* (2007) proposed a non linear stochastic filter for the tracking of fluid motion. The tracking is based on a low dimensional representation of the velocity field

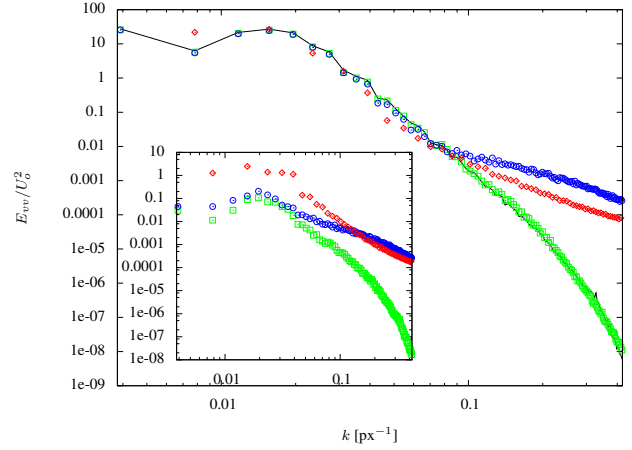


**Fig. 11** Results of velocity estimation with spatiotemporal regularization. The analyzed synthetic image sequence is based on a two-dimensional turbulent flow with additive noise simulating the reduction of the power of a virtual laser. From top to bottom: Map of the deviation from the exact velocity modulus for time 1, 2 and 3 (Heitz *et al.*, 2008).

obtained through a discretization of the vorticity and divergence maps. Beyond the tracking, this method allows to recover a set of consistent velocity fields for a whole sequence and provides an accurate low order representation of the dynamic of fluid flows. The order of the simplified motion estimation is related to the number of vortex particles involved in the estimation.

Papadakis & Mémin (2008b) described a global spatiotemporal variational formulation in order to optimally fuse the information obtained from the data images and the dynamic model. The technique relies on an optimal control approach and consists in a forward integration of the Navier-Stokes equations, followed by a backward integration of an adjoint evolution model. Results obtained with an image sequence of particles dispersed by a turbulent 2D flows are quite impressive. As observed in figures 12 and 13, Papadakis & Mémin (2008b) approach outperform other techniques since the whole dynamic range is recovered with this approach. The best results are provided when the image luminance is directly assimilated in the dynamic model, instead

of assimilating vector fields previously estimated from image sequences.



**Fig. 12** Spectrum of the vertical velocity component measured in particle image sequences generated with DNS of two-dimensional turbulent flow. *Black*, DNS; *Red*, approach of Cuzol *et al.* (2007); *Blue*, approach of Corpetti *et al.* (2006); *Green*, approach of Papadakis & Mémin (2008b). Spectra of the error for the same data are shown in inset.

Note that the evaluation of the above spatiotemporal regularization techniques have been conducted with image sequences for which the time resolution was ten times the time step of the DNS used to generate the sequence.

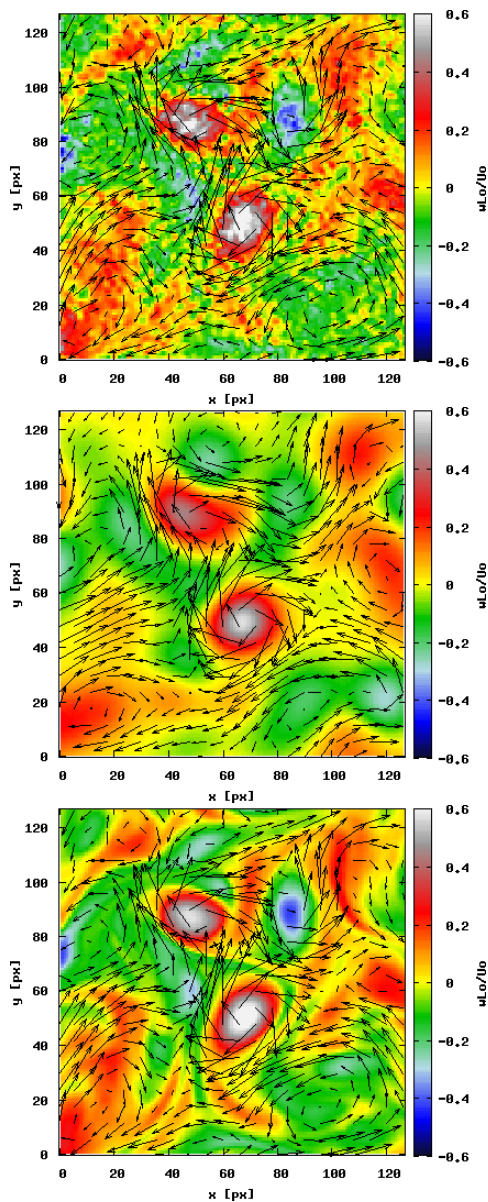
## 6 Conclusion and Perspectives

After a brief conclusion, we indicate some promising directions for further research.

### 6.1 Conclusion

This paper is an attempt to provide an abridged report on variational motion estimation techniques, focusing on techniques that we deem especially relevant for experimental fluid mechanics. After sketching representatives of established basic schemes, we presented modifications that have been developed for the specific case of fluid motion estimation. This latter work indicates the emerging collaboration between two communities, image processing and computer vision, and experimental fluid mechanics.

Yet, in our opinion, this is just the tip of the iceberg regarding the potential for further research. In the following subsections, we indicate few promising research directions. We hope that this paper will stimulate further cooperation along these lines.



**Fig. 13** Vorticity maps and vector fields in a turbulent flow. From top to bottom, [Corpetti et al. \(2006\)](#) approach, [Cuzol et al. \(2007\)](#) approach and [Papadakis & Mémin \(2008b\)](#) approach.

## 6.2 3D-PIV

Recently, *Tomographic Particle Image Velocimetry (TomoPIV)* ([Elsinga et al., 2006](#)) has attracted a lot of interest. Observing projections of particles in a volume of interest with 4-6 cameras, the three-dimensional volume function  $I(\mathbf{x}, t)$ ,  $\mathbf{x} \in \Omega \subset \mathbb{R}^3$ , can be reconstructed with high spatial resolution. A closer look to the currently employed standard algebraic reconstruction techniques shows that there is a potential for improving the trade-off between function reconstruction from a limited amount of noisy data, and increasing the particle density to facilitate subsequent motion estimation ([Petra et al., 2009](#); [Petra & Schnörr, 2009](#)).

This move to three dimensions plus eventually time will likely enable physics-based models and methods to provide accurate inspection tools for experimental fluid mechanics.

## 6.3 Turbulence models

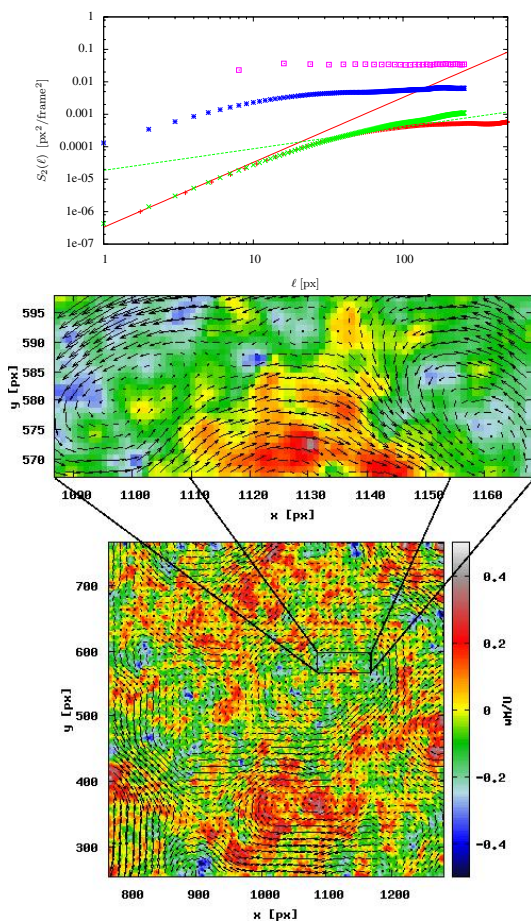
Taking seriously the ultimate goal of synergy between experiments and simulation, the question of how to utilize turbulence models in connection with motion estimation naturally appears. To the best of our knowledge, models combining these two worlds in order to improve estimation from real data, have not been devised, so far.

A promising direction of research concerns ways to incorporate invariants and laws governing the turbulence statistics into a variational estimation scheme. A reasonable approach is to include a regularizing term into the energy functional that enforces quantities derived from the velocity gradient tensor to be smooth. The objective is to preserve the salient enstrophy and dissipation structures that are relevant for characterizing the topology of turbulent regions, like vortex tubes, vortex sheets and pure straining ([Perry & Chong, 1987](#); [Chong et al., 1998](#)). Likewise Kolmogorov's law, describing the statistical structure of turbulence in the inertial range, [Héas et al. \(2009a\)](#) proposed a multiscale estimator based on scaling power laws accounting for the turbulent kinetic energy decay. A spatial regularization properly constrains the solution to behave through scales as a self similar process via second-order structure function. This enlarge further the dynamic range of the estimates. In contrast to standard approaches, this multiscale regularization presents the valuable advantage of solving the aperture problem while fixing regularizers weights at the different scales. [Figure 14](#) shows estimations obtained for real particle images in grid turbulence. In this case, the method is combined with a simple hot-wire measurement providing the real parameters of the power law ([Héas et al., 2009b](#)). Results exhibit the ability of this technique to estimate large dynamic ranges and better accuracy than other PIV methods. Note that instead of measuring the parameters with hot wire anemometry a promising extension of this approach consists in selecting by Bayesian evidence the most likely scaling law given the image data ([Héas et al., 2009c](#)).

## References

- Adrian, R. 1991 Particle imaging techniques for experimental fluid mechanics. *Annal Rev. Fluid Mech.* **23**, 261–304. [6](#)
- Adrian, R. 2005 Twenty years of particle velocimetry. *Exp Fluids* **39** (2), 159–169. [2](#), [7](#)
- Alvarez, L., Castaño, C. A., García, M., Krissian, K., Mazonza, L., Salgado, A. & Sánchez, J. 2008 Variational sec-





**Fig. 14** Second-order longitudinal velocity structure functions in the streamwise direction, velocity field and vorticity map estimated for real particle images in grid turbulence with the self-similar regularization method proposed by Héas *et al.* (2009b). Red, HWA measurements; Green, proposed method; Blue, Horn & Schunck (1981); Purple, correlation method; Solid line is  $\sim \ell^2$ ; Dash line is  $\sim \ell^{2/3}$ .

ond order flow estimation for PIV sequences. *Exp Fluids* **44** (2), 291–304. [7](#)

- Alvarez, L., Castaño, C. A., García, M., Krissian, K., Mazorra, L., Salgado, A. & Sánchez, J. 2009 A new energy-based method for 3d motion estimation of incompressible piv flows. *Computer Vision and Image Understanding* **113** (7), 802–810. [12](#)
- Amodei, L. & Benbourhim, M. N. 1991 A vector spline approximation. *J. Approx. Theory* **67**, 51–79. [9](#)
- Anderson, B. & Moore, J. 1979 *Optimal Filtering*. Englewood Cliffs, NJ : Prentice Hall. [14](#)
- Arad, N., Dyn, N., Reisfeld, D. & Yeshurun, Y. 1994 Image warping by radial basis functions application to facial expressions. *Computer Vision Graphics and Image Processing* **56** (2), 161–172. [8](#)
- Arnaud, E. & Mémin, E. 2007 Partial linear Gaussian model for tracking in image sequences using sequential Monte Carlo methods. *IJCV* **74** (1), 75–102. [15](#)

- Arnaud, E., Mémin, E., Sosa, R. & Artana, G. 2006 A fluid motion estimator for schlieren image velocimetry. In *European Conf. on Computer Vision, ECCV'06*, , vol. 3951. Graz, Austria: LNCS. [4](#)
- Arulampalam, M., Maskell, S., Gordon, N. & Clapp, T. 2002 A tutorial on particle filters for online nonlinear/non-Gaussian Bayesian tracking. *TSP* **50** (2). [15](#)
- Aubert, G. & Kornprobst, P. 2006 *Mathematical Problems in Image Processing*, 2nd edn. Springer. [2](#)
- Bergen, J., Burt, P., Hingorani, R. & Peleg, S. 1992 A three-frame algorithm for estimating two-component image motion. *IEEE Trans. Pattern Anal. Machine Intell.* **14** (9), 886–895. [12](#)
- Berselli, L., Iliescu, T. & Layton, W. 2006 *Mathematics of Large Eddy Simulation of Turbulent Flows*. Springer. [2](#)
- Bigün, J., Grandlund, G. & Wiklund, J. 1991 Multidimensional orientation estimation with application to texture analysis and optical flow. *IEEE Transactions on Pattern Analysis and Machine Intelligence* **13**, 775–790. [7](#)
- Black, M. & Rangarajan, A. 1996 On the unification of line processes, outlier rejection, and robust statistics with applications in early vision. *Int. J. Computer Vision* **19** (1), 75–104. [12](#)
- Bookstein, F. 1989 Principal warps: Thin-Plate Splines and the decomposition of deformations. *IEEE Transactions on Pattern Analysis and Machine Intelligence* **11** (6), 567–585. [8](#)
- Brezzi, F. & Fortin, M. 1991 *Mixed and Hybrid Finite Element Methods*. Springer. [10](#), [11](#)
- Brox, T., Bruhn, A., Papenberg, N. & Weickert, J. 2004 High accuracy optical flow estimation based on a theory for warping. In *European Conference on Computer Vision, ECCV'04*, pp. 25–36. Prague, Czech Republic. [4](#)
- Bruhn, A., Weickert, J., Kohlberger, T. & Schnörr, C. 2006 A multigrid platform for real-time motion computation with discontinuity-preserving variational methods. *Int. J. Computer Vision* **70** (3), 257–277. [9](#)
- Chan, T. & Shen, J. 2005 *Image Processing and Analysis*. Cambridge Univ. Press. [2](#)
- Chong, M., Soria, J., Perry, A., Chacin, J., Cantwell, B. & Na, Y. 1998 Turbulence structures of wall-bounded shear flows found using DNS data. *J. Fluid Mech.* **357**, 225. [21](#)
- Chorin, A. 1973 Numerical study of slightly viscous flow. *J. Fluid Mech.*, **57**, 785–796. [8](#), [15](#)
- Corpetti, T., Héas, P., Mémin, E. & Papadakis, N. 2008 Pressure image assimilation for atmospheric motion estimation. *Tellus Series A: Dynamic Meteorology and Oceanography* In press. [16](#)
- Corpetti, T., Heitz, D., Arroyo, G., Mémin, E. & Santa-Cruz, A. 2006 Fluid experimental flow estimation based on an optical-flow scheme. *Exp Fluids* **40** (1), 80–97. [3](#), [4](#), [12](#), [16](#), [17](#), [18](#), [19](#), [20](#), [21](#)
- Corpetti, T., Mémin, E. & Pérez, P. 2002 Dense estimation

- of fluid flows. *IEEE Transactions on Pattern Analysis and Machine Intelligence* **24** (3), 365–380. [3](#), [4](#), [10](#), [17](#)
- Cottet, G.-H. & Koumoutsakos, P. 2000 *Vortex methods: theory and practice*. Cambridge University Press. [8](#)
- Cuzol, A., Hellier, P. & Mémin, E. 2007 A low dimensional fluid motion estimator. *Int. Journ. on Computer Vision* **75** (3), 329–349. [9](#), [19](#), [20](#), [21](#)
- Cuzol, A. & Mémin, E. 2005 A stochastic filter for fluid motion tracking. In *Proc. Int. Conf. on Computer Vision (ICCV'05)*. Beijing, China. [8](#), [15](#)
- Cuzol, A. & Mémin, E. 2008 A stochastic filter technique for fluid flows velocity fields tracking. *IEEE Trans. on Pattern Analysis and Machine Intelligence* In press. [8](#), [15](#)
- D'Adamo, J., Papadakis, N., Mémin, E. & G, A. 2007 Variational assimilation of POD low-order dynamical systems. *Journal of Turbulence* **8** (9), 1–22. [16](#)
- Dahm, W. J. A., Su, L. K. & Southerland, K. B. 1992 A scalar imaging velocimetry technique for fully resolved four-dimensional vector velocity field measurements in turbulent flows. *Phys Fluids* **4** (10), 2191–2206. [16](#)
- Doucet, A., Godsill, S. & Andrieu, C. 2000 On sequential Monte Carlo sampling methods for Bayesian filtering. *Statistics and Computing* **10** (3), 197–208. [15](#)
- Duchon, J. 1977 Splines minimizing rotation invariant seminorms in sobolev spaces. In *Constructive Theory of Functions of several Variables* (ed. W. Schempp & K. Zeller), vol. 1, pp. 85–100. Berlin: Springer. [8](#)
- Elsinga, G., Scarano, F., Wieneke, B. & van Oudheusden, B. 2006 Tomographic particle image velocimetry. *Exp Fluids* **41** (6), 933–947. [21](#)
- Enkelmann, W. 1988 Investigation of multigrid algorithms for the estimation of optical flow fields in image sequences. *Comp. Vision Graph. and Image Proces.* **43**, 150–177. [12](#)
- Fitzpatrick, J. 1988 The existence of geometrical density-image transformations corresponding to object motion. *Comput. Vision, Graphics, Image Proc.* **44** (2), 155–174. [4](#)
- Fleet, D. & Jepson, A. 1990 Computation of component image velocity from local phase information. *Int. Journ. of Comp. Vision* **5** (77-104). [7](#)
- Foroosh, H., Zerubia, J. & Berthod, M. 2002 Extension of phase correlation to subpixel registration. *IEEE Trans. Image Processing* **11** (3), 188–200. [6](#)
- Geman, D. & Reynolds, G. 1992 Constrained restoration and the recovery of discontinuities. *IEEE Trans. Pattern Anal. Machine Intell.* **14** (3), 367–383. [11](#), [12](#)
- Girault, V. & Raviart, P.-A. 1986 *Finite Element Methods for Navier-Stokes Equations*. Springer. [10](#)
- Gordon, N., Salmond, D. & Smith, A. 1993 Novel approach to non-linear/non-Gaussian Bayesian state estimation. *IEEE Processing-F* **140** (2). [14](#), [15](#)
- Gui, L. & Merzkirch, W. 1996 A method of tracking ensemble of particle images. *Exp. in Fluids* **21**, 465–468. [6](#)
- Gui, L. & Merzkirch, W. 2000 A comparative study of the MQD method and the several correlation-based PIV evaluation algorithms. *Exp. in Fluids* **28**, 36–44. [5](#)
- Gunzburger, M. 2002 *Perspectives in Flow Control and Optimization*. SIAM. [11](#)
- Haussecker, H. & Fleet, D. 2001 Computing optical flow with physical models of brightness variations. *IEEE Transactions on Pattern Analysis and Machine Intelligence* **23**, 661–673. [3](#)
- Héas, P. & Mémin 2008 3D motion estimation of atmospheric layers from image sequences. *IEEE transactions on Geosciences and Remote Sensing* **46** (8), 2385–2396. [4](#)
- Héas, P., Heitz, D. & Mémin, E. 2009b Multiscale regularization based on turbulent kinetic energy decay for PIV estimations with high spatial regularization. In *8TH International Symposium on Particle Image Velocimetry - PIV09*. Melbourne, Victoria, Australia. [21](#), [22](#)
- Héas, P., Mémin, E., Heitz, D. & Mininni, P. 2009a Bayesian selection of scaling laws for motion modeling in images. In *International Conference on Computer Vision (ICCV)*. Kyoto, Japan. [17](#), [21](#)
- Héas, P., Mémin, E., Heitz, D. & Mininni, P. 2009c Evidence of turbulence power laws from image data. In *Turbulent Mixing and Beyond (TMB)*. Trieste, Italy. [21](#)
- Héas, P., Mémin, E., Papadakis, N. & Szantai, A. 2007a Layered estimation of atmospheric mesoscale dynamics from satellite imagery. *IEEE Trans. Geoscience and Remote Sensing* **45** (12), 4087–4104. [4](#), [12](#), [13](#), [14](#), [19](#)
- Héas, P., Papadakis, N. & Mémin, E. 2007b Time-consistent estimator of 2d/3d motion of atmospheric layers from pressure image. *Tech. Rep.* 6292. INRIA. [16](#)
- Heeger, D. 1988 Optical flow using spatiotemporal filters. *Int. J. Comp. Vis.* **1** (4), 279–302. [7](#)
- Heitz, D., Héas, P., Mémin, E. & Carlier, J. 2008 Dynamic consistent correlation-variational approach for robust optical flow estimation. *Exp Fluids* **45** (4), 595–608. [12](#), [13](#), [14](#), [18](#), [19](#), [20](#)
- Hiptmair, R. 1999 Canonical construction of finite elements. *Math. Computation* **68** (228), 1325–1346. [10](#)
- Horn, B. & Schunck, B. 1981 Determining optical flow. *Artif. Intell.* **17**, 185–203. [9](#), [17](#), [22](#)
- Huber, P. 1981 *Robust Statistics*. John Wiley & Sons. [11](#)
- Hyman, J. & Shashkov, M. 1997a Adjoint operators for the natural discretizations of the divergence, gradient and curl on logically rectangular grids. *Appl. Numer. Math.* **25** (4), 413–442. [10](#)
- Hyman, J. & Shashkov, M. 1997b Natural discretizations for the divergence, gradient, and curl on logically rectangular grids. *Comput. Math. Appl.* **33** (4), 81–104. [10](#)
- Isambert, T., Berroir, J. & Herlin, I. 2008 A multiscale vector spline method for estimating the fluids motion on



- satellite images. In *In ECCV'08: European Conference on Computer Vision*. Marseille, France: Springer. 9
- Jähne, B. 1993 *Spatio-temporal image processing, Lecture Notes in Computer Science*, vol. 751. Springer-Verlag. 6, 7
- Jähne, B., Klar, M. & Jehle, M. 2007 Motion analysis. In *Springer Handbook of Experimental Fluid Mechanics* (ed. C. Tropea, A. Yarin & J. Foss), chap. 25.2, pp. 1464–1491. Springer. 2
- Le-Dimet, F.-X. & Talagrand, O. 1986 Variational algorithms for analysis and assimilation of meteorological observations: theoretical aspects. *Tellus* **38** (A), 97–110. 15, 16
- Leonard, A. 1980 Vortex methods for flow simulation. *J. Comp. Phys.* **37**, 2385–2396. 8
- Lions, J. 1971 *Optimal Control of Systems Governed by Partial Differential Equations*. Springer-Verlag. 15, 16
- Liu, T. & Shen, L. 2008 Fluid flow and optical flow. *J. Fluid Mech.* **614**, 253–291. 3
- Lucas, B. & Kanade, T. 1981 An iterative image registration technique with an application to stereovision. In *Int. Joint Conf. on Artificial Intel. (IJCAI)*, pp. 674–679. 7
- Mansour, N. N., Ferziger, J. H. & Reynolds, W. C. 1978 Large-eddy simulation of a turbulent mixing layer. *Tech. Rep.*. Report TF-11, Thermosciences Div., Dept. of Mech. Eng., Stanford University. 14
- Mémin, E. & Pérez, P. 1998 Dense estimation and object-based segmentation of the optical flow with robust techniques. *IEEE Trans. Image Processing* **7** (5), 703–719. 12, 16
- Mémin, E. & Pérez, P. 2002 Hierarchical estimation and segmentation of dense motion fields. *Int. J. Computer Vision* **46** (2), 129–155. 12
- Musse, O., Heitz, F. & Armspach, J. 1999 3D deformable image matching using multiscale minimization of global energy functions. In *Proc. Conf. Comp. Vision Pattern Rec.*, vol. 2, pp. 478–485. Fort Collins, Colorado. 8
- Nobach, H. & Bodenschatz, E. 2009 Limitations of accuracy in PIV due to individual variations of particle image intensities. *Exp. in Fluids* **47**, 27–38. 5
- Okuno, T. & Nakaoka, J. 1991 Velocity field measurement by spatio-temporal derivative method. *J. Kansai Soc. Naval Architects* **215**, 69–74. 7
- Papadakis, N., Corpetti, T. & Mémin, E. 2007 Dynamically consistent optical flow estimation. In *Int. Conf. Comp. Vis. (ICCV'07)*. Rio de Janeiro, Brazil. 16
- Papadakis, N. & Mémin, E. 2008a An optimal control technique for fluid motion estimation. *SIAM Journal on Imaging Sciences* In press. 16
- Papadakis, N. & Mémin, E. 2008b A variational technique for time consistent tracking of curves and motion. *Journal of Mathematical Imaging and Vision* **31** (1), 81–103. 16, 20, 21
- Papenberg, N., Bruhn, A., Brox, T., Didas, S. & Weickert, J. 2006 Highly accurate optic flow computation with theoretically justified warping. *IJCV* **67** (2), 141–158. 12
- Paragios, N., Chen, Y. & Faugeras, O., ed. 2005 *The Handbook of Mathematical Models in Computer Vision*. Springer. 2
- Perry, A. & Chong, M. 1987 A description of eddy motions and flow patterns using critical-point concepts. *Ann. Rev. Fluid Mech.* **19**, 125. 21
- Petra, S. & Schnörr, C. 2009 Tomopiv meets compressed sensing. Technical report. IWR, University of Heidelberg. 21
- Petra, S., Schröder, A. & Schnörr, C. 2009 3D Tomography from few projections in experimental fluid mechanics. In *Imaging Measurement Methods for Flow Analysis* (ed. W. Nitsche & C. Dobriloff), *Notes on Numerical Fluid Mechanics and Multidisciplinary Design*, vol. 106, pp. 63–72. Springer. 21
- Quénou, G., Pakleza, J. & Kowalewski, T. 1998 Particle image velocimetry with optical flow. *Exp Fluids* **25**, 177–189. 16
- Raffel, M., Willert, C., Wereley, S. & Kompenhans, J. 2007 *Particle Image Velocimetry – A Practical Guide*. Springer. 2, 7
- Rohr, K., Fornefett, M. & Stiehl, H. 1999 Approximating Thin Plate Splines for elastic registration: Integration of landmark errors and orientation attributes. In *16th Int. Conf. Information Processing in Medical Imaging*, pp. 252–265. Hungary: LNCS 1613. 8
- Ruhnau, P., Kohlberger, T., Nobach, H. & Schnörr, C. 2005 Variational optical flow estimation for particle image velocimetry. *Exp Fluids* **38**, 21–32. 9, 16, 17
- Ruhnau, P. & Schnörr, C. 2007 Optical stokes flow estimation: An imaging-based control approach. *Exp Fluids* **42**, 61–78. 10, 11
- Ruhnau, P., Stahl, A. & Schnörr, C. 2007 Variational estimation of experimental fluid flows with physics-based spatio-temporal regularization. *Measurement Science and Technology* **18**, 755–763. 13, 19
- Schnörr, C. 1991 Determining optical flow for irregular domains by minimizing quadratic functionals of a certain class. *Int. J. Computer Vision* **6** (1), 25–38. 9
- Simoncelli, E. 1993 Distributed representation and analysis of visual motion. PhD thesis, MIT. 7
- Srinivasan, S. & Chellappa, R. 1998 Optical flow using overlapped basis functions for solving global motion problems. In *Proc. Europ. Conf. Computer Vision*, pp. 288–304. Freiburg, Germany. 8
- Stanislas, M., Okamoto, K., Kähler, C. J., Westerweel, J. & Scarano, F. 2008 Main results of the third international PIV Challenge. *Exp Fluids* **45** (1), 27–71. 17
- Su, L. K. & Dahm, W. J. A. 1996 Scalar imaging velocimetry measurements of the velocity gradient tensor field in

- turbulent flows. I. assessment of errors. *Phys Fluids* **8** (7), 1869–1882. [16](#)
- Sugii, Y., Nishio, S., Okuno, T. & Okamoto, K. 2000 A highly accurate iterative PIV technique using a gradient method. *Meas. Sci. Technol.* **11**, 1666–1673. [7](#), [12](#)
- Suter, D. 1994 Motion estimation and vector splines. In *Conference on Computer Vision and Pattern Recognition*, pp. 939–942. Los Alamitos, CA, USA: IEEE Computer Society Press. [9](#)
- Szeliski, R. & Shum, H.-Y. 1996 Motion estimation with quadtree splines. *IEEE Trans. Pattern Anal. Machine Intell.* **18** (12), 1199–1210. [8](#)
- Tokumaru, P. T. & Dimotakis, P. E. 1995 Image correlation velocimetry. *Exp Fluids* **19**, 1–15. [16](#)
- Tretiak, O. & Pastor, L. 1984 Velocity estimation from image sequences with second order differential operators. In *Proc. 7th Int. Conf. On Pattern Recognition*, pp. 16–19. Montreal. [4](#)
- Wahba, G. 1990 *Spline models for observational data*. Philadelphia: Society for Industrial and Applied Mathematics. [8](#)
- Weber, J. & Malik, J. 1995 Robust computation of optical flow in a multi-scale differential framework. *Int. J. Computer Vision* **14** (1). [4](#)
- Weickert, J. & Schnörr, C. 2001 Variational optic flow computation with a spatio-temporal smoothness constraint. *J. Math. Imaging and Vision* **14** (3), 245–255. [14](#)
- Wu, Y., Kanade, T., Li, C. & Cohn, J. 2000 Image registration using wavelet-based motion model. *Int. J. Computer Vision* **38** (2), 129–152. [8](#)
- Yamamoto, Y. & Uemura, T. 2009 Robust particle image velocimetry using gradient method with upstream difference and downstream difference. *Exp. in Fluids* **46** (4), 659–670. [7](#)
- Yuan, J., Schnörr, C. & Mémin, E. 2007 Discrete orthogonal decomposition and variational fluid flow estimation. *J. Math. Imag. Vision* **28**, 67–80. [10](#), [17](#), [18](#)
- Yuille, A. & Grzywacz, N. 1988 The motion coherence theory. In *Proc. Int. Conf. Computer Vision*, pp. 344–353. Tarpon Springs, Florida. [7](#)