



HAL
open science

On the Boltzmann-Grad limit for the two dimensional periodic Lorentz gas

Emanuele Caglioti, François Golse

► **To cite this version:**

Emanuele Caglioti, François Golse. On the Boltzmann-Grad limit for the two dimensional periodic Lorentz gas. 2010. hal-00454029v2

HAL Id: hal-00454029

<https://hal.science/hal-00454029v2>

Preprint submitted on 5 Aug 2010 (v2), last revised 30 Sep 2010 (v3)

HAL is a multi-disciplinary open access archive for the deposit and dissemination of scientific research documents, whether they are published or not. The documents may come from teaching and research institutions in France or abroad, or from public or private research centers.

L'archive ouverte pluridisciplinaire **HAL**, est destinée au dépôt et à la diffusion de documents scientifiques de niveau recherche, publiés ou non, émanant des établissements d'enseignement et de recherche français ou étrangers, des laboratoires publics ou privés.

ON THE BOLTZMANN-GRAD LIMIT FOR THE TWO DIMENSIONAL PERIODIC LORENTZ GAS

EMANUELE CAGLIOTI AND FRANÇOIS GOLSE

ABSTRACT. The two-dimensional, periodic Lorentz gas, is the dynamical system corresponding with the free motion of a point particle in a planar system of fixed circular obstacles centered at the vertices of a square lattice in the Euclidian plane. Assuming elastic collisions between the particle and the obstacles, this dynamical system is studied in the Boltzmann-Grad limit, assuming that the obstacle radius r and the reciprocal mean free path are asymptotically equivalent small quantities, and that the particle's distribution function is slowly varying in the space variable. In this limit, the periodic Lorentz gas cannot be described by a linear Boltzmann equation (see [F. Golse, Ann. Fac. Sci. Toulouse **17** (2008), 735–749]), but involves an integro-differential equation conjectured in [E. Caglioti, F. Golse, C.R. Acad. Sci. Sér. I Math. **346** (2008) 477–482] and proved in [J. Marklof, A. Strömbergsson, preprint arXiv:0801.0612], set on a larger phase-space larger than the usual single-particle phase-space. The main purpose of the present paper is to study the dynamical properties of this integro-differential equation: identifying its equilibrium states, proving a H Theorem and discussing the speed of approach to equilibrium in the long time limit. In the first part of the paper, we derive the explicit formula for a transition probability appearing in that equation following the method sketched in [E. Caglioti, F. Golse, loc. cit.].

1. THE LORENTZ GAS

The Lorentz gas is the dynamical system corresponding with the free motion of a single point particle in a system of fixed spherical obstacles, assuming that collisions between the particle and any of the obstacles are elastic. This simple mechanical model was proposed in 1905 by H.A. Lorentz [17] to describe the motion of electrons in a metal — see also the work of P. Drude [10]

Henceforth, we assume that the space dimension is 2 and restrict our attention to the case of a periodic system of obstacles. Specifically, the obstacles are disks of radius r centered at each point of \mathbf{Z}^2 . Hence the domain left free for particle motion is

$$(1.1) \quad Z_r = \{x \in \mathbf{R}^2 \mid \text{dist}(x, \mathbf{Z}^2) > r\}, \quad \text{where } 0 < r < \frac{1}{2}.$$

Throughout this paper, we assume that the particle moves at speed 1. Its trajectory starting from $x \in Z_r$ with velocity $\omega \in \mathbf{S}^1$ at time $t = 0$ is denoted by $t \mapsto (X_r, \Omega_r)(t; x, \omega) \in \mathbf{R}^2 \times \mathbf{S}^1$. One has

$$(1.2) \quad \begin{cases} \dot{X}_r(t) &= \Omega_r(t), \\ \dot{\Omega}_r(t) &= 0, \end{cases} \quad \text{whenever } X_r(t) \in Z_r,$$

while

$$(1.3) \quad \begin{cases} X_r(t+0) &= X_r(t-0), \\ \Omega_r(t+0) &= \mathcal{R}[X_r(t)]\Omega_r(t-0), \end{cases} \quad \text{whenever } X_r(t) \in \partial Z_r.$$

2000 *Mathematics Subject Classification.* 82C70, 35B27 (82C40, 60K05).

Key words and phrases. Periodic Lorentz gas, Boltzmann-Grad limit, Kinetic models, Extended phase space, Convergence to equilibrium, Continued fractions, Farey fractions, Three lengths theorem.

In the system above, we denote $\dot{\cdot} = \frac{d}{dt}$, and $\mathcal{R}[X_r(t)]$ is the specular reflection on ∂Z_r at the point $X_r(t) = X_r(t \pm 0)$.

Next we introduce the Boltzmann-Grad limit. This limit assumes that $r \ll 1$ and that the initial position x and direction ω of the particle are jointly distributed in $Z_r \times \mathbf{S}^1$ under some density of the form $f^{in}(rx, \omega)$ — i.e. slowly varying in x . Given this initial data, we define

$$(1.4) \quad f_r(t, x, \omega) := f^{in}(rX_r(-t/r; x, \omega), \Omega_r(-t/r; x, \omega)) \quad \text{whenever } x \in Z_r.$$

In this paper, we are concerned with the limit of f_r as $r \rightarrow 0^+$ in some sense to be explained below. In the 2-dimensional setting considered here, this is precisely the Boltzmann-Grad limit.

In the case of a random (Poisson), instead of periodic, configuration of obstacles, Gallavotti [11] proved that the expectation of f_r converges to the solution of the Lorentz kinetic equation

$$(1.5) \quad \begin{cases} (\partial_t + \omega \cdot \nabla_x) f(t, x, \omega) = \int_{\mathbf{S}^1} (f(t, x, \omega - 2(\omega \cdot n)n) - f(t, x, \omega)) (\omega \cdot n)_+ dn, \\ f|_{t=0} = f^{in}, \end{cases}$$

for all $t > 0$ and $(x, \omega) \in \mathbf{R}^2 \times \mathbf{S}^1$. Gallavotti's remarkable result was later generalized and improved in [23, 3].

In the case of a periodic distribution of obstacles, the Boltzmann-Grad limit of the Lorentz gas cannot be described by the Lorentz kinetic equation (1.5). Nor can it be described by any linear Boltzmann equation with regular scattering kernel: see [12, 14] for a proof of this fact, based on estimates on the distribution of free path lengths to be found in [4] and [15].

In a recent note [7], we have proposed a kinetic equation for the limit of f_r as $r \rightarrow 0^+$. The striking new feature in our theory for the Boltzmann-Grad limit of the periodic Lorentz gas is an extended single-particle phase-space (see also [13]) where the limiting equation is posed.

Shortly after our announcements [13, 7], J. Marklof and A. Strömbergsson independently arrived at the same limiting equation for the Boltzmann-Grad limit of the periodic Lorentz gas as in [7]. Their contribution [19] provides a complete rigorous derivation of that equation (thereby confirming an hypothesis left unverified in [7]), as well as an extension of that result to the case of any space dimension higher than 2.

The present paper provides first a complete proof of the main result in our note [7]. In fact the method sketched in our announcement [7] is different from the one used in [20], and could perhaps be useful for future investigations on the periodic Lorentz gas in 2 space dimensions.

Moreover, we establish some fundamental qualitative features of the equation governing the Boltzmann-Grad limit of the periodic Lorentz gas in 2 space dimensions — including an analogue of the classical Boltzmann H Theorem, a description of the equilibrium states, and of the long time limit for that limit equation.

We have split the presentation of our main results in the two following sections. Section 2 introduces our kinetic theory in an extended phase space for the Boltzmann-Grad limit of the periodic Lorentz gas in space dimension 2. Section 3 is devoted to the fundamental dynamical properties of the integro-differential equation describing this Boltzmann-Grad limit — specifically, we present an analogue of Boltzmann's H Theorem, describe the class of equilibrium distribution functions, and investigate the long time limit of the distribution functions in extended phase space that are solution of that integro-differential equation.

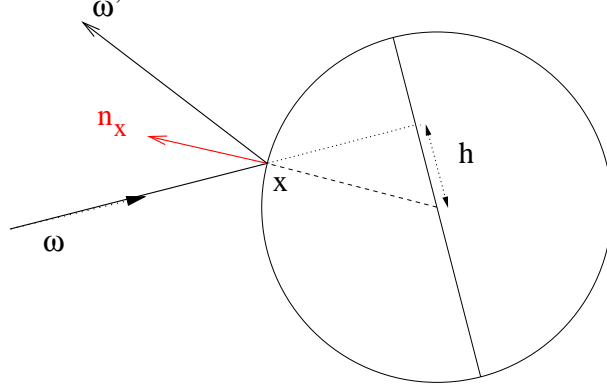


FIGURE 1. The impact parameter h corresponding with a collision with incoming direction ω or equivalently with outgoing direction ω'

2. MAIN RESULTS I: THE BOLTZMANN-GRAD LIMIT

Let $(x, \omega) \in Z_r \times \mathbf{S}^1$, and define $0 < t_0 < t_1 < \dots$ to be the sequence of collision times on the billiard trajectory in Z_r starting from x with velocity ω . In other words,

$$(2.1) \quad \{t_j \mid j \in \mathbf{N}\} = \{t \in \mathbf{R}_+^* \mid X_r(t; x, \omega) \in \partial Z_r\}.$$

Define further

$$(2.2) \quad (x_j, \omega_j) := (X_r(t_j + 0; x, \omega), \Omega_r(t_j + 0; x, \omega)), \quad j \geq 0.$$

Denote by n_x the inward unit normal to Z_r at the point $x \in \partial Z_r$, and consider

$$(2.3) \quad \begin{aligned} \Gamma_r^\pm &= \{(x, \omega) \in \partial Z_r \times \mathbf{S}^1 \mid \pm \omega \cdot n_x > 0\}, \\ \Gamma_r^0 &= \{(x, \omega) \in \partial Z_r \times \mathbf{S}^1 \mid \omega \cdot n_x = 0\}. \end{aligned}$$

Obviously, $(x_j, \omega_j) \in \Gamma_r^+ \cup \Gamma_r^0$ for each $j \geq 0$.

2.1. The Transfer Map. As a first step in finding the Boltzmann-Grad limit of the periodic Lorentz gas, we seek a mapping from $\Gamma_r^+ \cup \Gamma_r^0$ to itself whose iterates transform (x_0, ω_0) into the sequence (x_j, ω_j) defined in (2.2).

For $(x, \omega) \in (Z_r \times \mathbf{S}^1) \cup \Gamma_r^+ \cup \Gamma_r^0$, let $\tau_r(x, \omega)$ be the exit time defined as

$$(2.4) \quad \tau_r(x, \omega) = \inf\{t > 0 \mid x + t\omega \in \partial Z_r\}.$$

Also, for $(x, \omega) \in \Gamma_r^+ \cup \Gamma_r^0$, define the impact parameter $h_r(x, \omega)$ by

$$(2.5) \quad h_r(x, \omega) = \sin(\widehat{\omega, n_x}).$$

Denote by $(\Gamma_r^+ \cup \Gamma_r^0)/\mathbf{Z}^2$ the quotient of $\Gamma_r^+ \cup \Gamma_r^0$ under the action of \mathbf{Z}^2 by translations on the x variable. Obviously, the map

$$(2.6) \quad (\Gamma_r^+ \cup \Gamma_r^0)/\mathbf{Z}^2 \ni (x, \omega) \mapsto (h_r(x, \omega), \omega) \in [-1, 1] \times \mathbf{S}^1$$

coordinatizes $(\Gamma_r^+ \cup \Gamma_r^0)/\mathbf{Z}^2$, and we henceforth denote by Y_r its inverse. For $r \in]0, \frac{1}{2}[$, we define the transfer map

$$T_r : [-1, 1] \times \mathbf{S}^1 \rightarrow \mathbf{R}_+^* \times [-1, 1]$$

by

$$(2.7) \quad T_r(h', \omega) = (2r\tau_r(Y_r(h', \omega)), h_r((X_r, \Omega_r)(\tau_r(Y_r(h', \omega)) \pm 0; Y_r(h', \omega)))).$$

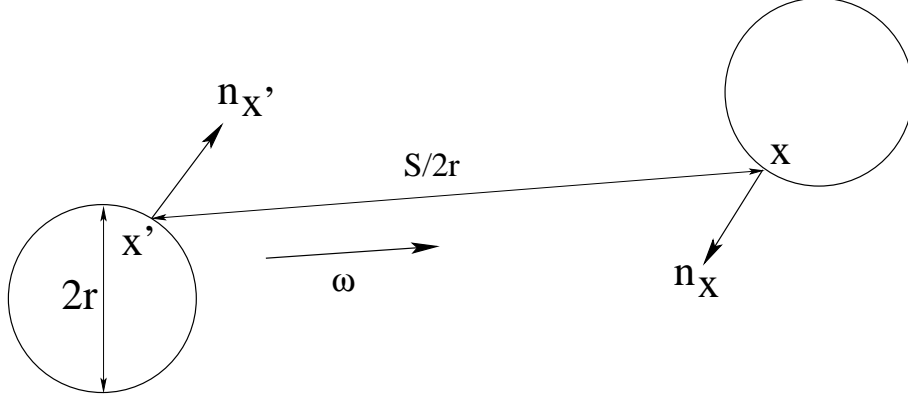


FIGURE 2. The transfer map

Up to translations by a vector of \mathbf{Z}^2 , the transfer map T_r is essentially the sought transformation, since one has

$$(2.8) \quad T_r(h_r(x_j, \omega_j), \omega_j) = (2r\tau_r(x_j, \omega_j), h_r(x_{j+1}, \omega_j)), \quad \text{for each } j \geq 0,$$

and

$$(2.9) \quad \omega_{j+1} = R[\pi - 2 \arcsin(h_r(x_{j+1}, \omega_j))]\omega_j, \quad \text{for each } j \geq 0.$$

The notation

$$(2.10) \quad R[\theta] \text{ designates the rotation of an angle } \theta.$$

Notice that, by definition,

$$h_r(x_{j+1}, \omega_j) = h_r(x_{j+1}, \omega_{j+1}).$$

The theorem below giving the limiting behavior of the map T_r as $r \rightarrow 0^+$ was announced in [7].

Theorem 2.1. *For each $\Phi \in C_c(\mathbf{R}_+^* \times [-1, 1])$ and each $h' \in [-1, 1]$*

$$(2.11) \quad \frac{1}{|\ln \epsilon|} \int_{\epsilon}^{1/4} \Phi(T_r(h', \omega)) \frac{dr}{r} \rightarrow \int_0^{\infty} \int_{-1}^1 \Phi(S, h) P(S, h|h') dS dh$$

a.e. in $\omega \in \mathbf{S}^1$ as $\epsilon \rightarrow 0^+$, where the transition probability $P(S, h|h') dS dh$ is given by the formula

$$(2.12) \quad P(S, h|h') = \frac{3}{\pi^2 S \eta} \left((S\eta) \wedge (1-S)_+ + (\eta S - |1-S|)_+ \right. \\ \left. + \left((S - \frac{1}{2}S\eta) \wedge (1 + \frac{1}{2}S\eta) - (\frac{1}{2}S + \frac{1}{2}S\zeta) \vee 1 \right)_+ \right. \\ \left. + \left((S - \frac{1}{2}S\eta) \wedge 1 - (\frac{1}{2}S + \frac{1}{2}S\zeta) \vee (1 - \frac{1}{2}S\eta) \right)_+ \right),$$

with the notation

$$\zeta = \frac{1}{2}|h + h'|, \quad \eta = \frac{1}{2}|h - h'|,$$

and

$$a \wedge b = \inf(a, b), \quad a \vee b = \sup(a, b).$$

Equivalently, for each $(S, h, h') \in \mathbf{R}_+ \times]-1, 1[\times]-1, 1[$ such that $|h'| \leq h$,

$$(2.13) \quad P(S, h|h') = \frac{3}{\pi^2} \left(1 \wedge \frac{1}{h - h'} \left(\frac{2}{S} - (1 + h') \right)_+ \right).$$

The formula (2.12) implies the following properties of the function P .

Corollary 2.2 (Properties of the transition probability $P(S, h|h')$). *The function $(S, h, h') \mapsto P(S, h|h')$ is piecewise continuous on $\mathbf{R}_+ \times [-1, 1] \times [-1, 1]$.*

1) *It satisfies the symmetries*

$$(2.14) \quad P(S, h|h') = P(S, h'|h) = P(S, -h - h') \quad \text{for a.e. } h, h' \in [-1, 1] \text{ and } S \geq 0,$$

as well as the identities

$$(2.15) \quad \begin{cases} \int_0^\infty \int_{-1}^1 P(S, h|h') dS dh = 1, & \text{for each } h' \in [-1, 1], \\ \int_0^\infty \int_{-1}^1 P(S, h|h') dS dh' = 1, & \text{for each } h \in [-1, 1]. \end{cases}$$

2) *The transition probability $P(S, h|h')$ satisfies the bounds*

$$(2.16) \quad 0 \leq P(S, h|h') \leq \frac{6}{\pi^2 S} \mathbf{1}_{1+h' < \frac{2}{S}}$$

for a.e. $h, h' \in]-1, 1[$ such that $|h'| \leq h$ and all $S \geq 4$. Moreover, one has

$$(2.17) \quad \int_{-1}^1 \int_{-1}^1 P(S, h|h') dh dh' \leq \frac{48}{\pi^2 S^3}, \quad S \geq 4.$$

As we shall see below, the family $T_r(h', \omega)$ is wildly oscillating in both h' and ω as $r \rightarrow 0^+$, so that it is somewhat natural to expect that T_r converges only in the weakest imaginable sense.

The above result with the explicit formula (2.12) was announced in [7]. At the same time, V.A. Bykovskii and A.V. Ustinov¹ arrived independently at formula (2.13) in [5]. That formulas (2.12) and (2.13) are equivalent is proved in section 6.2 below.

The existence of the limit (2.11) for the periodic Lorentz gas in any space dimension has been obtained by J. Marklof and A. Strömbergsson in [18], by a method completely different from the one used in the work of V.A. Bykovskii and A.V. Ustinov or ours. However, at the time of this writing, their analysis does not seem to lead to an explicit formula for $P(s, h|h')$ such as (2.12)-(2.13) in space dimension higher than 2.

Notice that J. Marklof and A. Strömbergsson as well as V.A. Bykovskii and A.V. Ustinov obtain the limit (2.11) in the weak-* L^∞ topology as regards the variable ω , without the Cesàro average over r , whereas our result, being based on Birkhoff's ergodic theorem, involves the Cesàro average in the obstacle radius, but leads to a pointwise limit a.e. in ω .

In space dimension 2, [20] extends the explicit formula (2.12)-(2.13) to the case of interactions more general than hard-sphere collisions in terms of their scattering map. The explicit formula proposed by Marklof-Strömbergsson in [20] for the transition probability follows from their formula (4.14) in [18], and was obtained independently from our result in [7].

Another object of potential interest when considering the Boltzmann-Grad limit for the 2-dimensional periodic Lorentz gas is the probability of transition on impact parameters corresponding with successive collisions, which is essentially the Boltzmann-Grad limit of the billiard map in the sense of Young measures. Obviously, the probability of observing an impact parameter in some infinitesimal interval dh around h for a particle whose previous collision occurred with an impact parameter h' is

$$\Pi(h|h') = \int_0^\infty P(S, h|h') dS.$$

¹We are grateful to J. Marklof for informing us of their work in August 2009.

EXPLICIT FORMULA FOR $\Pi(h|h')$

For $|h'| < h < 1$, one has

$$(2.18) \quad \Pi(h|h') = \frac{6}{\pi^2} \frac{1}{h-h'} \ln \frac{1+h}{1+h'}$$

Besides, the transition probability $\Pi(h|h')$ satisfies the symmetries inherited from $P(S, h|h')$:

$$(2.19) \quad \Pi(h|h') = \Pi(h'|h) = \Pi(-h|-h') \quad \text{for a.e. } h, h' \in [-1, 1].$$

2.2. 3-obstacle configurations. Before analyzing the dynamics of the Lorentz gas in the Boltzmann-Grad limit, let us describe the key ideas used in our proof of Theorem 2.1.

We begin with an observation which greatly reduces the complexity of billiard dynamics for a periodic system of obstacles centered at the vertices of the lattice \mathbf{Z}^2 , in the small obstacle radius limit. This observation is another form of a famous statement about rotations of an irrational angle on the unit circle, known as “the three-length (or three-gap) theorem”, conjectured by Steinhaus and proved by V.T. Sós [22] — see also [24].

Let $\omega \in \mathbf{S}^1$ with components ω^1, ω^2 independent over \mathbf{Q} . Particle trajectories leaving, say, the surface of the obstacle centered at the origin in the direction ω will next collide with one of at most three, and generically three other obstacles. More precisely,

Lemma 2.3 (Blank-Krikorian [1], Caglioti-Golse [6]). *Let $0 < r < \frac{1}{2}$, and $\omega \in \mathbf{S}^1$ such that $0 < \omega^2 < \omega^1$ and $\omega^2/\omega^1 \notin \mathbf{Q}$. Then, there exists (q, p) and (\bar{q}, \bar{p}) in \mathbf{Z}^2 such that*

$$0 < q < \bar{q}, \quad q\bar{p} - \bar{q}p = \sigma \in \{\pm 1\}$$

satisfying the following property:

$$\begin{aligned} & \{x + \tau_r(x, \omega)\omega \mid |x| = r \text{ and } x \cdot \omega \geq 0\} \\ & \subset \partial D((q, p), r) \cup \partial D((\bar{q}, \bar{p}), r) \cup \partial D((q + \bar{q}, p + \bar{p}), r), \end{aligned}$$

where $D(x_0, r)$ designates the disk of radius r centered at x_0 .

The lemma above is one of the key argument in our analysis.

To go further, we need a convenient set of parameters in order to handle all these 3-obstacle configurations as the direction ω runs through \mathbf{S}^1 .

The sets

$$\{x + t\omega \mid |x| = r, \ x \cdot \omega \geq 0, \ x + \tau_r(x, \omega)\omega \in \partial D((q, p), r), \ t \in \mathbf{R}\}$$

and

$$\{x + t\omega \mid |x| = r, \ x \cdot \omega \geq 0, \ x + \tau_r(x, \omega)\omega \in \partial D((\bar{q}, \bar{p}), r), \ t \in \mathbf{R}\}$$

are closed strips, whose widths are denoted respectively by a and b . The following quantities are somewhat easier to handle:

$$(2.20) \quad Q = \frac{2rq}{\omega^1}, \quad \bar{Q} = \frac{2r\bar{q}}{\omega^1}, \quad A = \frac{a\omega^1}{2r}, \quad B = \frac{b\omega^1}{2r}$$

and we shall henceforth denote them by

$$(2.21) \quad Q(\omega, r), \quad \bar{Q}(\omega, r), \quad A(\omega, r), \quad B(\omega, r), \quad \text{together with } \sigma(\omega, r)$$

whenever we need to keep track of the dependence of these quantities upon the direction ω and obstacle radius r — we recall that

$$\sigma(\omega, r) = q\bar{p} - p\bar{q} \in \{\pm 1\}.$$

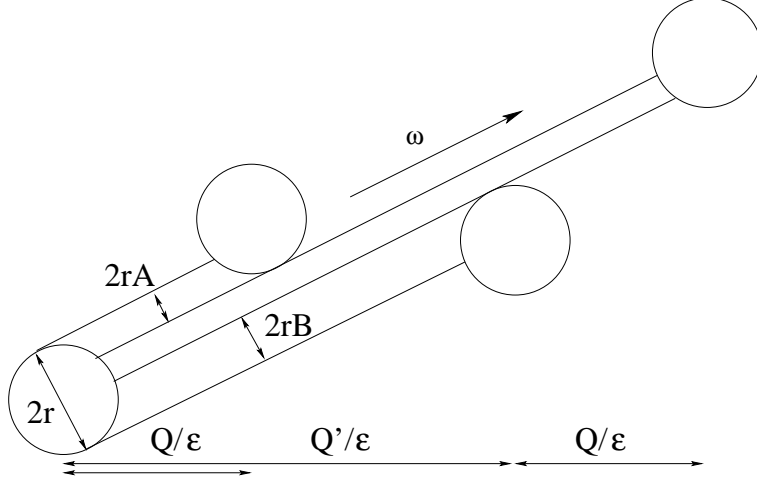


FIGURE 3. Example of a 3-obstacle configurations, and the parameters A , B , Q and Q' . Here $\epsilon = 2r/\omega_1$.

Lemma 2.4. *Let $0 < r < \frac{1}{2}$, and $\omega \in \mathbf{S}^1$ be such that $0 < \omega^2 < \omega^1$ and $\omega^2/\omega^1 \notin \mathbf{Q}$. Then, one has*

$$(2.22) \quad \begin{cases} 0 < A(\omega, r), B(\omega, r), & A(\omega, r) + B(\omega, r) \leq 1, \\ 0 < Q(\omega, r) < \bar{Q}(\Omega, r), \end{cases}$$

and

$$\bar{Q}(\omega, r)(1 - A(\omega, r)) + Q(\omega, r)(1 - B(\omega, r)) = 1.$$

This last equality entails the bound

$$(2.23) \quad 0 < Q(\omega, r) < \frac{1}{2 - A(\omega, r) - B(\omega, r)} \leq 1.$$

Therefore, each possible 3-obstacle configuration corresponding with the direction ω and the obstacle radius r is completely determined by the parameters $(A, B, Q, \sigma)(\omega, r) \in [0, 1]^3 \times \{\pm 1\}$.

The proof of Theorem 2.1 is based on the two following ingredients.

The first is an asymptotic, explicit formula for the transfer map T_r in terms of the parameters A, B, Q, σ defined above.

Proposition 2.5. *Let $0 < r < \frac{1}{2}$, and $\omega \in \mathbf{S}^1$ such that $0 < \omega^2 < \omega^1$ and $\omega^2/\omega^1 \notin \mathbf{Q}$. Then, for each $h' \in [-1, 1]$ and each $r \in]0, \frac{1}{2}[$, one has*

$$T_r(h', \omega) = \mathbf{T}_{A(\omega, r), B(\omega, r), Q(\omega, r), \sigma(\omega, r)}(h') + (O(r^2), 0),$$

in the limit as $r \rightarrow 0^+$. In the formula above, the map $\mathbf{T}_{A, B, Q, \sigma}$ is defined for each $(A, B, Q, \sigma) \in [0, 1]^3 \times \{\pm 1\}$ in the following manner:

$$(2.24) \quad \begin{aligned} \mathbf{T}_{A, B, Q, \sigma}(h') &= (Q, h' - 2\sigma(1 - A)) && \text{if } \sigma h' \in [1 - 2A, 1], \\ \mathbf{T}_{A, B, Q, \sigma}(h') &= (Q', h' + 2\sigma(1 - B)) && \text{if } \sigma h' \in [-1, -1 + 2B], \\ \mathbf{T}_{A, B, Q, \sigma}(h') &= (Q' + Q, h' + 2\sigma(A - B)) && \text{otherwise.} \end{aligned}$$

For $\omega = (\cos \theta, \sin \theta)$ with arbitrary $\theta \in \mathbf{R}$, the map $h' \mapsto T_r(h', \omega)$ is computed using Proposition 2.5 by using the symmetries in the periodic configuration of obstacles as follows. Set $\tilde{\theta} = \theta - m\frac{\pi}{2}$ with $m = [\frac{2}{\pi}(\theta + \frac{\pi}{4})]$ and let $\tilde{\omega} = (\cos \tilde{\theta}, \sin \tilde{\theta})$. Then

$$(2.25) \quad T_r(h', \omega) = (s, h), \quad \text{where } (s, \text{sign}(\tan \tilde{\theta})h) = T_r(\text{sign}(\tan \tilde{\theta})h', \tilde{\omega}).$$

The second ingredient in our proof of Theorem 2.1 is an explicit formula for the limit of $\omega \mapsto (A, B, Q, \sigma)(\omega, r)$ as $r \rightarrow 0^+$ in the sense of Young measures on the first octant \mathbf{S}_+^1 of \mathbf{S}^1 .

Proposition 2.6. *Let F be any bounded and piecewise continuous function defined on the compact $\mathbf{K} = [0, 1]^3 \times \{\pm 1\}$. Then*

$$(2.26) \quad \frac{1}{|\ln \epsilon|} \int_{\epsilon}^{1/4} F(A(\omega, r), B(\omega, r), Q(\omega, r), \sigma(\omega, r)) \frac{dr}{r} \\ \rightarrow \int_{\mathbf{K}} F(A, B, Q, \sigma) d\mu(A, B, Q, \sigma)$$

a.e. in $\omega \in \mathbf{S}_+^1$ as $\epsilon \rightarrow 0^+$, where μ is the probability measure on \mathbf{K} given by

$$(2.27) \quad d\mu(A, B, Q, \sigma) = \frac{6}{\pi^2} \mathbf{1}_{0 < A < 1} \mathbf{1}_{0 < B < 1-A} \mathbf{1}_{0 < Q < \frac{1}{2-A-B}} \frac{dAdBdQ}{1-A} (\delta_{\sigma=1} + \delta_{\sigma=-1}).$$

This result is perhaps more transparent when stated in terms of the new parameters $A, B' = \frac{B}{1-A}, Q, \sigma$ instead of the original A, B, Q, σ : an elementary change of variables in the integral on the right hand side of (2.26) shows that

$$\int_{\mathbf{K}} F(A, B, Q, \sigma) d\mu(A, B, Q, \sigma) \\ = \int_{\mathbf{K}} F(A, (1-A)B', Q, \sigma) d\mu'(A, B', Q, \sigma),$$

where

$$d\mu'(A, B', Q, \sigma) \\ = \frac{6}{\pi^2} \mathbf{1}_{0 < A < 1} \mathbf{1}_{0 < B' < 1} \mathbf{1}_{0 < Q < \frac{1}{1+(1-A)(1-B')}} dAdB'dQ (\delta_{\sigma=1} + \delta_{\sigma=-1}).$$

In other words, the new parameters A, B', Q and σ are uniformly distributed over the maximal domain compatible with the bounds (2.22) and (2.23).

The first part of Theorem 2.1 follows from combining the two propositions above; in particular, for each $h' \in [-1, 1]$, the transition probability $P(S, h|h') dS dh$ is obtained as the image of the probability measure μ in (2.27) under the transformation $(A, B, Q, \sigma) \mapsto \mathbf{T}_{A, B, Q, \sigma}(h')$.

2.3. The Limiting Dynamics. With the parametrization of all 3-obstacle configurations given above, we return to the problem of describing the Boltzmann-Grad limit of the Lorentz gas dynamics.

Let $(x, \omega) \in Z_r \times \mathbf{S}^1$, and let the sequence of collision times $(t_j)_{j \geq 0}$, collision points $(x_j)_{j \geq 0}$ and post-collision velocities $(\omega_j)_{j \geq 0}$ be defined as in (2.1) and (2.2). The particle trajectory starting from x in the direction ω at time $t = 0$ is obviously completely defined by these sequences.

As suggested above, the sequences $(t_j)_{j \geq 0}$, $(x_j)_{j \geq 0}$ and $(\omega_j)_{j \geq 0}$ can be reconstructed with the transfer map, as follows.

Set

$$(2.28) \quad \begin{aligned} t_0 &= \tau_r(x, \omega), \\ x_0 &= x + \tau_r(x, \omega)\omega, \\ h_0 &= h_r(x_0, \omega), \\ \omega_0 &= R[\pi - 2 \arcsin(h_0)]\omega. \end{aligned}$$

We then define the sequences $(t_j)_{j \geq 0}$, $(x_j)_{j \geq 0}$ inductively, in the following manner:

$$(2.29) \quad \begin{aligned} (2s_{j+1}, h_{j+1}) &= T_r(h_j, \omega_j), \\ t_{j+1} &= t_j + \frac{1}{r}s_{j+1}, \\ x_{j+1} &= x_j + \frac{1}{r}s_{j+1}\omega_j, \\ \omega_{j+1} &= R[\pi - 2 \arcsin(h_{j+1})]\omega_j, \end{aligned}$$

for each $j \geq 0$.

If the sequence of 3-obstacle configuration parameters

$$\mathbf{b}_j^r = ((A, B, Q, \sigma)(\omega_j, r))_{j \geq 0}$$

converges (in some sense to be explained below) as $r \rightarrow 0^+$ to a sequence of independent random variables $(\mathbf{b}_j)_{j \geq 0}$ with values in \mathbf{K} , then the dynamics of the periodic Lorentz gas in the Boltzmann-Grad limit can be described in terms of the discrete time Markov process defined as

$$(S_{j+1}, H_{j+1}) = \mathbf{T}_{\mathbf{b}_j}(H_j), \quad j \geq 0.$$

Denote $\mathcal{Z}_{j+1} = \mathbf{R}^2 \times \mathbf{S}^1 \times \mathbf{R}_+ \times [-1, 1] \times \mathbf{K}^{n+1}$ for each $j \geq 0$. The asymptotic independence above can be formulated as follows: there exists a probability measure P_0 on $\mathbf{R}_+ \times [-1, 1]$ such that, for each $j \geq 0$ and $\Psi \in C(\mathcal{Z}_{n+1})$,

$$(H) \quad \begin{aligned} \lim_{r \rightarrow 0^+} \int_{r\mathcal{Z}_r \times \mathbf{S}^1} \Psi(x, \omega, r\tau_r(\frac{x}{r}, \omega), h_r(\frac{x_0}{r}, \omega_0), \mathbf{b}_0^r, \dots, \mathbf{b}_n^r) dx d\omega \\ = \int_{\mathcal{Z}_{n+1}} \Psi(x, \omega, \tau, h, \mathbf{b}_0, \dots, \mathbf{b}_n) dx d\omega dP_0(\tau, h) d\mu(\mathbf{b}_0) \dots d\mu(\mathbf{b}_n), \end{aligned}$$

where μ is the measure defined in (2.27).

This scenario for the limiting dynamics is confirmed by the following

Theorem 2.7. *Let f^{in} be any continuous, compactly supported probability density on $\mathbf{R}^2 \times \mathbf{S}^1$. Denoting by $R[\theta]$ the rotation of an angle θ , let $F \equiv F(t, x, \omega, s, h)$ be the solution of*

$$(2.30) \quad \begin{cases} (\partial_t + \omega \cdot \nabla_x - \partial_s)F(t, x, \omega, s, h) = \int_{-1}^1 2P(2s, h|h')F(t, x, R[\theta(h')]\omega, 0, h')dh', \\ F(0, x, \omega, s, h) = f^{in}(x, \omega) \int_{2s}^\infty \int_{-1}^1 P(\tau, h|h')dh' d\tau, \end{cases}$$

where (x, ω, s, h) runs through $\mathbf{R}^2 \times \mathbf{S}^1 \times \mathbf{R}_+ \times]-1, 1[$, and $\theta(h) = \pi - 2 \arcsin(h)$.

Then the family $(f_r)_{0 < r < \frac{1}{2}}$ defined in (1.4) satisfies

$$(2.31) \quad f_r \rightarrow \int_0^\infty \int_{-1}^1 F(\cdot, \cdot, \cdot, s, h) ds dh \text{ in } L^\infty(\mathbf{R}_+ \times \mathbf{R}^2 \times \mathbf{S}^1) \text{ weak-}^*$$

as $r \rightarrow 0^+$.

Let us conclude this presentation of our main results with a few remarks.

Equation (2.30)-(2.31) was proposed first in [7], under some additional decorrelation assumption left unverified — specifically, assuming (H). Then, Marklof-Strömbergsson provided a complete, rigorous derivation of that same equation in [19], without any additional assumption, thereby establishing the theorem above.

The main novelty in this description of the Boltzmann-Grad limit of the periodic Lorentz gas is the fact that it involves a Markov process in the extended phase space $\mathbf{R}^2 \times \mathbf{S}^1 \times \mathbf{R}_+ \times [-1, 1]$. In addition to the space and velocity variables x and ω

that are usual in the classical kinetic theory of gases, this extended phase space involves two extra variables: i.e. s , the (scaled) time to the next collision and h , the impact parameter at that next collision, as additional coordinates describing the state of the moving point particle. To the best of our knowledge, the idea of using this extended phase space (and particularly the additional variables s and h) appeared for the first time in our announcements [13, 7].

3. MAIN RESULTS II: DYNAMICAL PROPERTIES OF THE LIMITING EQUATION

The present section establishes some fundamental mathematical properties of equation (2.30). For simplicity, we henceforth restrict our attention to the case where the space variable x varies in the flat 2-torus $\mathbf{T}^2 = \mathbf{R}^2/\mathbf{Z}^2$.

3.1. Equilibrium states. As is well-known, in the kinetic theory of gases, the equilibrium states are the uniform Maxwellian distributions. They are characterized as the only distribution functions that are independent of the space variable and for which the collision integral vanishes identically.

In equation (2.30), the analogue of the Boltzmann collision integral is the quantity

$$\int_{-1}^1 2P(2s, h|h')F(t, x, R[\theta(h')]\omega, 0, h')dh' + \partial_s F(t, x, \omega, s, h).$$

On the other hand, the variables (s, h) play in equation (2.30) the same role as the velocity variable in classical kinetic theory.

Therefore, the equilibrium distributions analogous to Maxwellians in the kinetic theory of gases are the nonnegative measurable functions $F \equiv F(s, h)$ such that

$$-\partial_s F(s, h) = \int_{-1}^1 2P(2s, h|h')F(0, h')dh', \quad s > 0, \quad -1 < h < 1.$$

Theorem 3.1. *Define*

$$E(s, h) := \int_{2s}^{+\infty} \int_{-1}^1 P(\tau, h|h')dh'd\tau.$$

1) *Then*

$$E(0, h) = 1, \quad -1 < h < 1$$

and

$$\int_0^{+\infty} \int_{-1}^1 E(s, h)dhd s = \int_0^{+\infty} \int_{-1}^1 \int_{-1}^1 \frac{1}{2}SP(S, h|h')dhdh'dS = 1.$$

2) *Let $F \equiv F(s, h)$ be a bounded, nonnegative measurable function on $\mathbf{R}_+ \times [-1, 1]$ such that $s \mapsto F(s, h)$ is continuous on \mathbf{R}_+ for a.e. $h \in [-1, 1]$ and*

$$\begin{cases} -\partial_s F(s, h) = \int_{-1}^1 2P(2s, h|h')F(0, h')dh', & s > 0, \quad -1 < h < 1, \\ \lim_{s \rightarrow +\infty} F(s, h) = 0. \end{cases}$$

Then there exists $C \geq 0$ such that

$$F(s, h) = CE(s, h), \quad s > 0, \quad -1 < h < 1.$$

3) *Define*²

$$p(t) = \lim_{r \rightarrow 0^+} \frac{|\{(x, \omega) \in (Z_r \cap [0, 1]^2) \times \mathbf{S}^1 \mid 2r\tau_r(x, \omega) > t\}|}{|(Z_r \cap [0, 1]^2) \times \mathbf{S}^1|}.$$

²The existence of this limit, and an explicit formula for p are obtained in [2].

Then

$$\int_{-1}^1 E(s, h) dh = -2p'(2s), \quad s > 0,$$

and

$$\int_{-1}^1 E(s, h) dh \sim \frac{1}{\pi^2 s^2} \text{ as } s \rightarrow +\infty.$$

Notice that the class of physically admissible initial data for our limiting equation (2.30) consists of densities of the form

$$F^{in}(x, \omega, s, h) = f^{in}(x, \omega)E(s, h)$$

— see Theorem 2.7. In other words, physically admissible initial data are “local equilibrium densities”, i.e. equilibrium densities in (s, h) modulated in the variables (x, ω) .

Before going further, we need some basic facts about the evolution semigroup defined by the Cauchy problem (2.30). The existence and uniqueness of a solution of the Cauchy problem (2.30) presents little difficulty. It is written in the form

$$F(t, \cdot, \cdot, \cdot) = K_t F^{in}, \quad t \geq 0,$$

where $(K_t)_{t \geq 0}$ is a strongly continuous linear contraction semigroup on the Banach space $L^1(\mathbf{T}^2 \times \mathbf{S}^1 \times \mathbf{R}_+ \times [-1, 1])$. It satisfies in particular the following properties:

- 1) if $F^{in} \geq 0$ a.e. on $\mathbf{T}^2 \times \mathbf{S}^1 \times \mathbf{R}_+ \times [-1, 1]$, then, for each $t \geq 0$, one has $K_t F^{in} \geq 0$ a.e. on $\mathbf{T}^2 \times \mathbf{S}^1 \times \mathbf{R}_+ \times [-1, 1]$;
- 2) for each $t \geq 0$, one has $K_t E = E$;
- 3) if $F^{in} \leq CE$ (resp. $F^{in} \geq CE$) a.e. on $\mathbf{T}^2 \times \mathbf{S}^1 \times \mathbf{R}_+ \times [-1, 1]$ for some constant C , then, for each $t \geq 0$, one has $K_t F^{in} \leq CE$ (resp. $K_t F^{in} \geq CE$) a.e. on $\mathbf{T}^2 \times \mathbf{S}^1 \times \mathbf{R}_+ \times [-1, 1]$;
- 4) for each $F^{in} \in L^1(\mathbf{T}^2 \times \mathbf{S}^1 \times \mathbf{R}_+ \times [-1, 1])$ and each $t \geq 0$, one has

$$\iiint\limits_{\mathbf{T}^2 \times \mathbf{S}^1 \times \mathbf{R}_+ \times [-1, 1]} K_t F^{in} dx d\omega ds dh = \iiint\limits_{\mathbf{T}^2 \times \mathbf{S}^1 \times \mathbf{R}_+ \times [-1, 1]} F^{in} dx d\omega ds dh;$$

- 5) if $F^{in} \in C(\mathbf{T}^2 \times \mathbf{S}^1 \times \mathbf{R}_+ \times [-1, 1])$ is continuously differentiable with respect to x and s , i.e. $\nabla_x F^{in}$ and $\partial_s F^{in} \in C(\mathbf{T}^2 \times \mathbf{S}^1 \times \mathbf{R}_+ \times [-1, 1])$, then, for each $t \geq 0$, one has $K_t F^{in}$, $\partial_t K_t F^{in}$, $\nabla_x K_t F^{in}$ and $\partial_s K_t F^{in} \in C(\mathbf{T}^2 \times \mathbf{S}^1 \times \mathbf{R}_+ \times [-1, 1])$, and the function $(t, x, \omega, s, h) \mapsto K_t F^{in}(x, \omega, s, h)$ is a classical solution of the equation (2.30) on $\mathbf{R}_+^* \times \mathbf{T}^2 \times \mathbf{S}^1 \times \mathbf{R}_+^* \times [-1, 1]$.

All these properties follow from straightforward semigroup arguments once (2.30) is established. Otherwise, the semigroup $(K_t)_{t \geq 0}$ is constructed together with the underlying Markov process in section 6 of [19] — see in particular Propositions 6.2 and 6.3, formula (6.16) and Theorem 6.4 there.

3.2. Instability of modulated equilibrium states. A well-known feature of the kinetic theory for monatomic gases is that generically, local equilibrium distribution functions — i.e. distribution functions that are Maxwellian in the velocity variable and whose pressure, bulk velocity and temperature may depend on the time and space variables — are solutions of the Boltzmann equation if and only if they are uniform equilibrium distribution functions — i.e. independent of the time and space variables. In other words, the class of local Maxwellian states is generically unstable under the dynamics of the Boltzmann equation. An obvious consequence of this observation is that rarefied gas flows are generically too complex to be described by only the macroscopic fields used in classical gas dynamics — i.e. by local Maxwellian distribution functions parametrized by a pressure, temperature and velocity field.

Equation (2.30) governing the Boltzmann-Grad limit of the periodic Lorentz gas satisfies the following, analogous property.

Theorem 3.2. *Let F be a solution of (2.30) of the form*

$$F(t, x, \omega, s, h) = f(t, x, \omega)E(s, h), \quad \text{with } f \in C^1(I \times \mathbf{T}^2 \times \mathbf{S}^1),$$

where I is any interval of \mathbf{R}_+ with nonempty interior. Then f is a constant.

Thus, the complexity of the equation (2.30) posed in the extended phase space $\mathbf{T}^2 \times \mathbf{S}^1 \times \mathbf{R}_+ \times [-1, 1]$ cannot be reduced by postulating that the solution is a local equilibrium, whose additional variables s and h can be averaged out.

As in the case of the classical kinetic theory of gases, this observation is important in the discussion of the long time limit of solutions of (2.30).

3.3. H Theorem and a priori estimates. In this section, we propose a formal derivation of a class of a priori estimates that includes an analogue of Boltzmann's H Theorem in the kinetic theory of gases.

Let \mathbf{h} be a convex C^1 function defined on \mathbf{R}_+ ; consider the relative entropy

$$H_{\mathbf{h}}(fE|E) := \iiint_{\mathbf{T}^2 \times \mathbf{S}^1 \times \mathbf{R}_+ \times [-1, 1]} (\mathbf{h}(f) - \mathbf{h}(1) - \mathbf{h}'(1)(f - 1))(t, x, \omega, s, h)E(s, h)dx d\omega ds dh.$$

The most classical instance of such a relative entropy corresponds with the choice $\mathbf{h}(z) = z \ln z$: in that case $\mathbf{h}(1) = 0$ while $\mathbf{h}'(1) = 1$, so that

$$H_{z \ln z}(fE|E) = \iiint_{\mathbf{T}^2 \times \mathbf{S}^1 \times \mathbf{R}_+ \times [-1, 1]} (f \ln f - h + 1)(t, x, \omega, s, h)E(s, h)dx d\omega ds dh.$$

Theorem 3.3. *Let $F \equiv F(t, x, \omega, s, h)$ in $C^1(\mathbf{R}_+ \times \mathbf{T}^2 \times \mathbf{S}^1 \times \mathbf{R}_+ \times [-1, 1])$ such that*

$$0 \leq F(t, x, \omega, s, h) \leq CE(s, h), \quad (t, x, \omega, s, h) \in \mathbf{R}_+ \times \mathbf{T}^2 \times \mathbf{S}^1 \times \mathbf{R}_+ \times [-1, 1],$$

and

$$(\partial_t + \omega \cdot \nabla_x - \partial_s)F(t, x, \omega, s, h) = \int_{-1}^1 2P(2s, h|h')F(t, x, R[\theta(h')]\omega, 0, h')dh'$$

with the notations of Theorem 2.7. Then $H_{\mathbf{h}}(F|E) \in C^1(\mathbf{R}_+)$ and

$$\frac{d}{dt}H_{\mathbf{h}}(F|E) + \int_{\mathbf{T}^2} D_{\mathbf{h}}(F/E)(t, x)dx = 0,$$

where the entropy dissipation rate $D_{\mathbf{h}}$ is given by the formula

$$D_{\mathbf{h}}(f)(t, x) = \iiint_{\mathbf{S}^1 \times \mathbf{R}_+ \times [-1, 1] \times [-1, 1]} 2P(2s, h|h') \left(\mathbf{h}(f(t, x, R[\theta(h')]\omega, 0, h')) - \mathbf{h}(f(t, x, \omega, s, h)) - \mathbf{h}'(f(t, x, \omega, s, h))(f(t, x, R[\theta(h')]\omega, 0, h') - f(t, x, \omega, s, h)) \right) d\omega ds dh dh'.$$

Integrating the equality above over $[0, t]$, one has

$$H_{\mathbf{h}}(F|E)(t) + \int_0^t \int_{\mathbf{T}^2} D_{\mathbf{h}}(F/E)(\tau, x)dx d\tau = H_{\mathbf{h}}(F|E)(0)$$

for each $t \geq 0$. Since \mathbf{h} is convex, one has

$$H_{\mathbf{h}}(F|E) \geq 0 \text{ and } D_{\mathbf{h}}(F/E) \geq 0,$$

and the equality above entails the a priori estimates

$$\begin{cases} 0 \leq H_{\mathbf{h}}(F|E)(t) \leq H_{\mathbf{h}}(F|E)(0), \\ \int_0^{+\infty} \int_{\mathbf{T}^2} D_{\mathbf{h}}(F|E)(t, x) dx dt \leq H_{\mathbf{h}}(F|E)(0). \end{cases}$$

That $H_{\mathbf{h}}(F|E)$ is a nonincreasing function of time is a general property of Markov processes; see for instance Yosida [26] on p. 392.

3.4. Long time limit. As an application of the analogue of Boltzmann's H Theorem presented in the previous section, we investigate the asymptotic behavior of solutions of (2.30) in the limit as $t \rightarrow +\infty$.

Theorem 3.4. *Let $f^{in} \equiv f^{in}(x, \omega) \in L^\infty(\mathbf{T}^2 \times \mathbf{S}^1)$ satisfy $f^{in}(x, \omega) \geq 0$ a.e. in $(x, \omega) \in \mathbf{T}^2 \times \mathbf{S}^1$. Let F be the solution of the Cauchy problem (2.30). Then*

$$F(t, \cdot, \cdot, \cdot, \cdot) \rightharpoonup CE$$

in $L^\infty(\mathbf{T}^2 \times \mathbf{S}^1 \times \mathbf{R}_+ \times [-1, 1])$ weak-*, with

$$C = \frac{1}{2\pi} \iint_{\mathbf{T}^2 \times \mathbf{S}^1} f^{in}(x, \omega) dx d\omega.$$

3.5. Speed of approach to equilibrium. The convergence to equilibrium in the long time limit established in the previous section may seem rather unsatisfying. Indeed, in most cases, solutions of linear kinetic models converge to equilibrium in a strong L^2 topology, and often satisfy some exponential decay estimate.

While the convergence result in Theorem 3.4 might conceivably be improved, the following result rules out the possibility of a return to equilibrium at exponential speed in the strong L^2 sense.

Theorem 3.5. *There does not exist any function $\Phi \equiv \Phi(t)$ satisfying*

$$\Phi(t) = o(t^{-3/2}) \quad \text{as } t \rightarrow +\infty$$

such that, for each $f^{in} \in L^2(\mathbf{T}^2 \times \mathbf{S}^1)$, the solution F of the Cauchy problem (2.30) satisfies the bound

$$(3.1) \quad \begin{aligned} & \left\| F(t, \cdot, \cdot, \cdot, \cdot) - \langle f^{in} \rangle E \right\|_{L^2(\mathbf{T}^2 \times \mathbf{S}^1 \times \mathbf{R}_+ \times [-1, 1])} \\ & \leq \Phi(t) \|F(0, \cdot, \cdot, \cdot, \cdot)\|_{L^2(\mathbf{T}^2 \times \mathbf{S}^1 \times \mathbf{R}_+ \times [-1, 1])} \end{aligned}$$

for each $t \geq 0$, with the notation

$$\langle \phi \rangle = \frac{1}{2\pi} \iint_{\mathbf{T}^2 \times \mathbf{S}^1} \phi(x, \omega) dx d\omega$$

for each $\phi \in L^1(\mathbf{T}^2 \times \mathbf{S}^1)$.

By the same argument as in the proof of Theorem 3.5, one can establish a similar result for initial data in $L^p(\mathbf{T}^2 \times \mathbf{S}^1)$, with the L^2 norm replaced with the L^p norm in (3.1), for all $p \in]1, \infty[$; in that case $\Phi(t) = o(t^{-(2p-1)/p})$ is excluded.

The case $p = 2$ discussed in the theorem excludes the possibility of a spectral gap for the generator of the semigroup K_t associated with equation (2.30) — that is to say, for the unbounded operator \mathcal{A} on $L^2(\mathbf{T}^2 \times \mathbf{S}^1 \times \mathbf{R}_+ \times [-1, 1])$ defined by

$$\mathcal{A}f(x, \omega, s, h) = (\omega \cdot \nabla_x - \partial_s)f(x, \omega, s, h) - \int_{-1}^1 2P(2s, h|h')f(x, R[\theta(h')]\omega, 0, h')dh'$$

with domain

$$D(\mathcal{A}) = \{f \in L^2(\mathbf{T}^2 \times \mathbf{S}^1 \times \mathbf{R}_+ \times [-1, 1]) \mid (\omega \cdot \nabla_x - \partial_s)f \in L^2(\mathbf{T}^2 \times \mathbf{S}^1 \times \mathbf{R}_+ \times [-1, 1])\}.$$

4. AN ERGODIC THEOREM WITH CONTINUED FRACTIONS

4.1. **Continued fractions.** Let $\alpha \in (0, 1) \setminus \mathbf{Q}$; its continued fraction expansion is denoted

$$(4.1) \quad \alpha = [0; a_1, a_2, a_3, \dots] = \frac{1}{a_1 + \frac{1}{a_2 + \frac{1}{a_3 + \dots}}}.$$

Consider the Gauss map

$$(4.2) \quad T : (0, 1) \setminus \mathbf{Q} \ni x \mapsto \frac{1}{x} - \left[\frac{1}{x} \right] \in (0, 1) \setminus \mathbf{Q}.$$

The positive integers a_1, a_2, a_3, \dots are expressed in terms of α as

$$(4.3) \quad a_1 = \left[\frac{1}{\alpha} \right], \quad \text{and} \quad a_n = \left[\frac{1}{T^{n-1}\alpha} \right], \quad n \geq 1.$$

The action of T on α is most easily read on its continued fraction expansion:

$$(4.4) \quad T[0; a_1, a_2, a_3, \dots] = [0; a_2, a_3, a_4, \dots].$$

We further define two sequences of integers $(p_n)_{n \geq 0}$ and $(q_n)_{n \geq 0}$ by the following induction procedure:

$$(4.5) \quad \begin{aligned} p_{n+1} &= a_n p_n + p_{n-1}, & p_0 &= 1, & p_1 &= 0, \\ q_{n+1} &= a_n q_n + q_{n-1}, & q_0 &= 0, & q_1 &= 1. \end{aligned}$$

The sequence of rationals $(\frac{p_n}{q_n})_{n \geq 1}$ converges to α as $n \rightarrow \infty$. Rather than the usual distance $|\frac{p_n}{q_n} - \alpha|$, it is more convenient to consider

$$(4.6) \quad d_n := |q_n \alpha - p_n| = (-1)^{n-1} (q_n \alpha - p_n), \quad n \geq 0.$$

Obviously

$$(4.7) \quad d_{n+1} = -a_n d_n + d_{n-1}, \quad d_0 = 1, \quad d_1 = \alpha.$$

We shall use the notation

$$a_n(\alpha), \quad p_n(\alpha), \quad q_n(\alpha), \quad d_n(\alpha)$$

whenever we need to keep track of the dependence of those quantities upon α . For each $\alpha \in (0, 1) \setminus \mathbf{Q}$, one has the relation $a_n(T\alpha) = a_{n+1}(\alpha)$, which follows from (4.4) and implies in turn that $\alpha d_n(T\alpha) = d_{n+1}(\alpha)$, for each integer $n \geq 0$, by (4.7). Therefore,

$$(4.8) \quad d_n(\alpha) = \prod_{k=0}^{n-1} T^k \alpha, \quad n \geq 0.$$

While $a_n(\alpha)$ and $d_n(\alpha)$ are easily expressed in terms of the sequence $(T^k \alpha)_{k \geq 0}$, the analogous expression for $q_n(\alpha)$ is somewhat more involved. With (4.5) and (4.7), one proves by induction that

$$(4.9) \quad q_n(\alpha) d_{n+1}(\alpha) + q_{n+1}(\alpha) d_n(\alpha) = 1, \quad n \geq 0.$$

Hence

$$q_{n+1}(\alpha) d_n(\alpha) = 1 - \frac{d_{n+1}(\alpha) d_n(\alpha)}{d_n(\alpha) d_{n-1}(\alpha)} q_n(\alpha) d_{n-1}(\alpha),$$

so that, by a straightforward induction

$$(4.10) \quad q_{n+1}(\alpha) d_n(\alpha) = \sum_{j=0}^n (-1)^{n-j} \frac{d_{n+1}(\alpha) d_n(\alpha)}{d_{j+1}(\alpha) d_j(\alpha)}, \quad n \geq 0.$$

Replacing $(d_k(\alpha))_{0 \leq k \leq n+1}$ by its expression (4.8) leads to an expression of $q_{n+1}(\alpha)$ in terms of $T^k \alpha$ for $0 \leq k \leq n$.

4.2. The ergodic theorem. We recall that the Borel probability measure $dG(x) = \frac{1}{\ln 2} \frac{dx}{1+x}$ on $(0, 1)$ is invariant under the Gauss map T , and that T is ergodic for the measure $dG(x)$ (see for instance [16]), and even strongly mixing (see [21]).

For each $\alpha \in (0, 1) \setminus \mathbf{Q}$ and $\epsilon \in (0, 1]$, define

$$(4.11) \quad N(\alpha, \epsilon) = \inf\{n \geq 0 \mid d_n(\alpha) \leq \epsilon\}.$$

Lemma 4.1. *For a.e. $\alpha \in (0, 1)$, one has*

$$N(\alpha, \epsilon) \sim \frac{12 \ln 2}{\pi^2} \ln \frac{1}{\epsilon}, \quad \epsilon \rightarrow 0^+.$$

See [6] (where it is stated as Lemma 3.1) for a proof.

We further define

$$(4.12) \quad \delta_n(\alpha, \epsilon) = \frac{d_n(\alpha)}{\epsilon}, \quad n \geq 0,$$

for each $\alpha \in (0, 1) \setminus \mathbf{Q}$ and $\epsilon \in (0, 1]$.

Theorem 4.2. *For $m \geq 0$, let f be a bounded measurable function on $(\mathbf{R}_+)^{m+1}$; then there exists $L_m(f) \in \mathbf{R}$ independent of α such that*

$$\frac{1}{\ln(1/\eta)} \int_{\eta}^1 f(\delta_{N(\alpha, \epsilon)}(\alpha), \delta_{N(\alpha, \epsilon)-1}(\alpha), \dots, \delta_{N(\alpha, \epsilon)-m}(\alpha)) \frac{d\epsilon}{\epsilon} \rightarrow L_m(f)$$

and

$$\frac{1}{\ln(1/\eta)} \int_{\eta}^1 (-1)^{N(\alpha, \epsilon)} f(\delta_{N(\alpha, \epsilon)}(\alpha), \dots, \delta_{N(\alpha, \epsilon)-m}(\alpha)) \frac{d\epsilon}{\epsilon} \rightarrow 0$$

for a.e. $\alpha \in (0, 1)$ as $\eta \rightarrow 0^+$.

Proof. The proof of the first limit is as in [6], and we just sketch it. Write

$$\begin{aligned} & \int_{\eta}^1 f(\delta_{N(\alpha, \epsilon)}(\alpha), \delta_{N(\alpha, \epsilon)-1}(\alpha), \dots, \delta_{N(\alpha, \epsilon)-m}(\alpha)) \frac{d\epsilon}{\epsilon} \\ &= \sum_{n=1}^{N(\alpha, \epsilon)-1} \int_{d_n(\alpha)}^{d_{n-1}(\alpha)} f(\delta_{N(\alpha, \epsilon)}(\alpha), \delta_{N(\alpha, \epsilon)-1}(\alpha), \dots, \delta_{N(\alpha, \epsilon)-m}(\alpha)) \frac{d\epsilon}{\epsilon} \\ & \quad + \int_{\eta}^{d_{N(\alpha, \epsilon)-1}(\alpha)} f(\delta_{N(\alpha, \epsilon)}(\alpha), \delta_{N(\alpha, \epsilon)-1}(\alpha), \dots, \delta_{N(\alpha, \epsilon)-m}(\alpha)) \frac{d\epsilon}{\epsilon} \end{aligned}$$

Whenever $d_n(\alpha) \leq \epsilon < d_{n-1}(\alpha)$, one has $N(\alpha, \epsilon) = n$ so that

$$\begin{aligned} & \int_{\eta}^1 f(\delta_{N(\alpha, \epsilon)}(\alpha), \delta_{N(\alpha, \epsilon)-1}(\alpha), \dots, \delta_{N(\alpha, \epsilon)-m}(\alpha)) \frac{d\epsilon}{\epsilon} \\ &= \sum_{n=1}^{N(\alpha, \eta)-1} \int_{d_n(\alpha)}^{d_{n-1}(\alpha)} f(\delta_n(\alpha), \delta_{n-1}(\alpha), \dots, \delta_{n-m}(\alpha)) \frac{d\epsilon}{\epsilon} + O(1). \end{aligned}$$

Substituting $\rho = \frac{d_n(\alpha)}{\epsilon}$ in each integral on the right hand side of the identity above, one has, for $n \geq m > 1$

$$\begin{aligned} & \int_{d_n(\alpha)}^{d_{n-1}(\alpha)} f(\delta_n(\alpha), \delta_{n-1}(\alpha), \dots, \delta_{n-m}(\alpha)) \frac{d\epsilon}{\epsilon} \\ &= \int_{d_n(\alpha)/d_{n-1}(\alpha)}^1 f\left(\rho, \frac{\rho}{T^{n-1}\alpha}, \dots, \frac{\rho}{\prod_{k=1}^m T^{n-m+k-1}\alpha}\right) \frac{d\rho}{\rho} \\ & \quad = F_{m-1}(T^{n-m}\alpha), \end{aligned}$$

with the notation

$$F_{m-1}(\alpha) = \int_{T^{m-1}\alpha}^1 f\left(\rho, \frac{\rho}{T^{m-1}\alpha}, \dots, \frac{\rho}{\prod_{k=1}^m T^k \alpha}\right) \frac{d\rho}{\rho}.$$

Thus

$$\begin{aligned} & \frac{1}{\ln(1/\eta)} \int_{\eta}^1 f(\delta_{N(\alpha,\epsilon)}(\alpha), \delta_{N(\alpha,\epsilon)-1}(\alpha), \dots, \delta_{N(\alpha,\epsilon)-m}(\alpha)) \frac{d\epsilon}{\epsilon} \\ &= \frac{1}{\ln(1/\eta)} \sum_{n=m}^{N(\alpha,\eta)-1} F_{m-1}(T^{n-m}\alpha) + O\left(\frac{1}{\ln(1/\eta)}\right). \end{aligned}$$

We deduce from Birkhoff's ergodic theorem and Lemma 4.1 that

$$(4.13) \quad \frac{1}{\ln(1/\eta)} \sum_{n=m}^{N(\alpha,\eta)-1} F_{m-1}(T^{n-m}\alpha) \rightarrow L_m(f) := \frac{12\ln 2}{\pi^2} \int_0^1 F_{m-1}(x) dG(x)$$

for a.e. $\alpha \in (0, 1)$ as $\eta \rightarrow 0^+$, which establishes the first statement in the Theorem.

The proof of the second statement is fairly similar. We start from the identity

$$\begin{aligned} & \int_{\eta}^1 (-1)^{N(\alpha,\epsilon)} f(\delta_{N(\alpha,\epsilon)}(\alpha), \delta_{N(\alpha,\epsilon)-1}(\alpha), \dots, \delta_{N(\alpha,\epsilon)-m}(\alpha)) \frac{d\epsilon}{\epsilon} \\ &= \sum_{n=1}^{N(\alpha,\eta)-1} (-1)^n \int_{d_n(\alpha)}^{d_{n-1}(\alpha)} f(\delta_n(\alpha), \delta_{n-1}(\alpha), \dots, \delta_{n-m}(\alpha)) \frac{d\epsilon}{\epsilon} + O(1) \\ &= \sum_{n=m}^{N(\alpha,\eta)-1} (-1)^n F_{m-1}(T^{n-m}\alpha) + O(1). \end{aligned}$$

Writing

$$\begin{aligned} & \sum_{n=m}^{N(\alpha,\eta)-1} (-1)^n F_{m-1}(T^{n-m}\alpha) \\ &= \sum_{m/2 \leq k \leq (N(\alpha,\eta)-1)/2} (F_{m-1}(T^{2k-m}\alpha) - F_{m-1}(T^{2k+1-m}\alpha)) + O(1) \end{aligned}$$

we deduce from Birkhoff's ergodic theorem (applied to T^2 instead of T) and Lemma 4.1 that, for a.e. $\alpha \in (0, 1)$ and in the limit as $\eta \rightarrow 0^+$,

$$\begin{aligned} & \frac{1}{\ln(1/\eta)} \sum_{m/2 \leq k \leq (N(\alpha,\eta)-1)/2} (F_{m-1}(T^{2k-m}\alpha) - F_{m-1}(T^{2k+1-m}\alpha)) \\ & \rightarrow \frac{12\ln 2}{\pi^2} \int_0^1 (F_{m-1}(x) - F_{m-1}(Tx)) dG(x) = 0 \end{aligned}$$

since the measure dG is invariant under T .

This entails the second statement in the theorem. \square

4.3. Application to 3-obstacle configurations. Consider $\omega \in \mathbf{S}^1$ such that $0 < \omega_2 < \omega_1$ and $\omega_2/\omega_1 \notin \mathbf{Q}$, and let $r \in (0, \frac{1}{2})$.

The parameters $(A(\omega, r), B(\omega, r), Q(\omega, r), \sigma(\omega, r))$ defining the 3-obstacle configuration associated with the direction ω and the obstacle radius r are expressed in terms of the continued fraction expansion of ω_2/ω_1 in the following manner.

Proposition 4.3. For each $\omega \in \mathbf{S}^1$ such that $0 < \omega_2 < \omega_1$ and $\omega_2/\omega_1 \notin \mathbf{Q}$, and each $r \in (0, \frac{1}{2})$ one has

$$\begin{aligned} A(\omega, r) &= 1 - \frac{d_{N(\alpha, \epsilon)}(\alpha)}{\epsilon} \\ B(\omega, r) &= 1 - \frac{d_{N(\alpha, \epsilon)-1}(\alpha)}{\epsilon} - \left[\frac{\epsilon - d_{N(\alpha, \epsilon)-1}(\alpha)}{d_{N(\alpha, \epsilon)}(\alpha)} \right] \frac{d_{N(\alpha, \epsilon)}(\alpha)}{\epsilon} \\ Q(\omega, r) &= \epsilon q_{N(\alpha, \epsilon)} \\ \sigma(\omega, r) &= (-1)^{N(\alpha, \epsilon)} \end{aligned}$$

where

$$\alpha = \frac{\omega_2}{\omega_1}, \quad \text{and } \epsilon = \frac{2r}{\omega_1}.$$

By the definition of $N(\alpha, \epsilon)$, one has

$$0 \leq A(\omega, r), B(\omega, r), Q(\omega, r) \leq 1.$$

This is Proposition 2.2 on p. 205 in [6]; see also Blank-Krikorian [1] on p. 726.

Our main result in this section is

Theorem 4.4. Let $\mathbf{K} = [0, 1]^3 \times \{\pm 1\}$. For each $F \in C(\mathbf{K})$, there exists $\mathcal{L}(F) \in \mathbf{R}$ such that

$$\frac{1}{\ln(1/\eta)} \int_{\eta}^{1/2} F(A(\omega, r), B(\omega, r), Q(\omega, r), \sigma(\omega, r)) \frac{dr}{r} \rightarrow \mathcal{L}(F)$$

for a.e. $\omega \in \mathbf{S}^1$ such that $0 < \omega_2 < \omega_1$, in the limit as $\eta \rightarrow 0^+$.

Proof. First, observe that

$$F(A, B, Q, \sigma) = F_+(A, B, Q) + \sigma F_-(A, B, Q)$$

with

$$F_{\pm}(A, B, Q) = \frac{1}{2} (F(A, B, Q, +1) \pm F(A, B, Q, -1)).$$

By Proposition 4.3, one has

$$\begin{aligned} & F_{\pm}(A(\omega, r), B(\omega, r), Q(\omega, r)) \\ &= F_{\pm} \left(1 - \delta_{N(\alpha, \epsilon)}(\alpha), 1 - \delta_{N(\alpha, \epsilon)-1}(\alpha) - \left[\frac{1 - \delta_{N(\alpha, \epsilon)-1}(\alpha)}{\delta_{N(\alpha, \epsilon)}(\alpha)} \right] \delta_{N(\alpha, \epsilon)}(\alpha), \right. \\ & \quad \left. \frac{1}{\delta_{N(\alpha, \epsilon)-1}(\alpha)} d_{N(\alpha, \epsilon)-1}(\alpha) q_{N(\alpha, \epsilon)}(\alpha) \right). \end{aligned}$$

For each $m \geq 0$, we define

$$\begin{aligned} & f_{m, \pm}(\delta_N, \dots, \delta_{N-m-1}) := \\ & F_{\pm} \left(1 - \delta_N, 1 - \delta_{N-1} - \left[\frac{1 - \delta_{N-1}}{\delta_N} \right] \delta_N, \frac{1}{\delta_{N-1}} \sum_{j=(N-m)^+}^N (-1)^{N-j} \frac{\delta_N \delta_{N-1}}{\delta_j \delta_{j-1}} \right). \end{aligned}$$

Observe that

$$\alpha T \alpha \leq \frac{1}{2} \text{ for each } \alpha \in (0, 1) \setminus \mathbf{Q},$$

so that, whenever $n > m + 1$,

$$\begin{aligned} & \left| q_n(\alpha) d_{n-1}(\alpha) - \sum_{j=n-m}^n (-1)^{n-j} \frac{d_n(\alpha) d_{n-1}(\alpha)}{d_j(\alpha) d_{j-1}(\alpha)} \right| \leq \frac{d_n(\alpha) d_{n-1}(\alpha)}{d_{n-m-1}(\alpha) d_{n-m-2}(\alpha)} \\ & \leq \prod_{k=n-m-1}^{n-1} T^k \alpha \cdot T^{k-1} \alpha \leq 2^{-m-1}. \end{aligned}$$

Likewise, whenever $n > m + 1$ and $n > l + 1$,

$$(4.14) \quad \left| \sum_{j=n-l}^n (-1)^{n-j} \frac{d_n(\alpha) d_{n-1}(\alpha)}{d_j(\alpha) d_{j-1}(\alpha)} - \sum_{j=n-m}^n (-1)^{n-j} \frac{d_n(\alpha) d_{n-1}(\alpha)}{d_j(\alpha) d_{j-1}(\alpha)} \right| \leq 2^{-\min(l,m)}.$$

Since $\delta_{N(\alpha,\epsilon)-1}(\alpha) > 1$ by definition of $N(\alpha, \epsilon)$, one has

$$(4.15) \quad |f_{m,\pm}(\delta_{N(\alpha,\epsilon)}(\alpha), \dots, \delta_{N(\alpha,\epsilon)-m-1}(\alpha)) - f_{l,\pm}(\delta_{N(\alpha,\epsilon)}(\alpha), \dots, \delta_{N(\alpha,\epsilon)-l-1}(\alpha))| \leq \rho_{\pm}(2^{-\min(m,l)}),$$

where ρ_{\pm} is a modulus of continuity for F_{\pm} on the compact $[0, 1]^3$.

The inequality (4.14) implies that

$$(4.16) \quad \left| \frac{1}{\ln(1/4\eta)} \int_{\eta}^{1/4} F_{\pm}(A(\omega, r), B(\omega, r), Q(\omega, r)) \frac{dr}{r} - \frac{1}{\ln(1/4\eta)} \int_{2\eta/\omega_1}^{1/2\omega_1} f_{m,\pm}(\delta_{N(\alpha,\epsilon)}(\alpha), \dots, \delta_{N(\alpha,\epsilon)-m-1}(\alpha)) \frac{d\epsilon}{\epsilon} \right| \leq \rho_{\pm}(2^{-m-1})$$

upon setting $\alpha = \omega_2/\omega_1$. Moreover, by Theorem 4.2, for each $\eta_* > 0$

$$(4.17) \quad \begin{aligned} & \frac{1}{\ln(\eta_*/\eta)} \int_{\eta}^{\eta_*} f_{m,+}(\delta_{N(\alpha,\epsilon)}(\alpha), \dots, \delta_{N(\alpha,\epsilon)-m-1}(\alpha)) \frac{d\epsilon}{\epsilon} \rightarrow L_{m+1}(f_{m,+}) \\ & \frac{1}{\ln(\eta_*/\eta)} \int_{\eta}^{\eta_*} \sigma(\alpha, \epsilon) f_{m,-}(\delta_{N(\alpha,\epsilon)}(\alpha), \dots, \delta_{N(\alpha,\epsilon)-m-1}(\alpha)) \frac{d\epsilon}{\epsilon} \rightarrow 0 \end{aligned}$$

a.e. in $\alpha \in (0, 1)$ as $\eta \rightarrow 0^+$, and the inequality (4.15) implies that

$$|L_{m+1}(f_{m,+}) - L_{l+1}(f_{l,+})| \leq \rho_{\pm}(2^{-\min(m,l)}), \quad l, m \geq 0.$$

In other words, $(L_{m+1}(f_{m,+}))_{m \geq 0}$ is a Cauchy sequence. Therefore, there exists $L \in \mathbf{R}$ such that

$$(4.18) \quad L_{m+1}(f_{m,+}) \rightarrow L \text{ as } n \rightarrow \infty.$$

Putting together (4.16), (4.17) and (4.18), we first obtain

$$\begin{aligned} & L_{m+1}(f_{m,+}) - 2\rho(2^{-m-1}) \\ & \leq \varliminf_{\eta \rightarrow 0^+} \frac{1}{\ln(1/4\eta)} \int_{\eta}^{1/4} F_+(A(\omega, r), B(\omega, r), Q(\omega, r)) \frac{dr}{r} \\ & \leq \overline{\lim}_{\eta \rightarrow 0^+} \frac{1}{\ln(1/4\eta)} \int_{\eta}^{1/4} F_+(A(\omega, r), B(\omega, r), Q(\omega, r)) \frac{dr}{r} \\ & \leq L_{m+1}(f_{m,+}) + 2\rho(2^{-m-1}), \end{aligned}$$

and

$$\begin{aligned} & -2\rho(2^{-m-1}) \\ & \leq \varliminf_{\eta \rightarrow 0^+} \frac{1}{\ln(1/4\eta)} \int_{\eta}^{1/4} \sigma(\omega, r) F_-(A(\omega, r), B(\omega, r), Q(\omega, r)) \frac{dr}{r} \\ & \leq \overline{\lim}_{\eta \rightarrow 0^+} \frac{1}{\ln(1/4\eta)} \int_{\eta}^{1/4} \sigma(\omega, r) F_-(A(\omega, r), B(\omega, r), Q(\omega, r)) \frac{dr}{r} \\ & \leq 2\rho(2^{-m-1}). \end{aligned}$$

Letting $m \rightarrow \infty$ in the above inequalities, we finally obtain that

$$\begin{aligned} \frac{1}{\ln(1/4\eta)} \int_{\eta}^{1/4} F_+(A(\omega, r), B(\omega, r), Q(\omega, r)) \frac{dr}{r} &\rightarrow L \\ \frac{1}{\ln(1/4\eta)} \int_{\eta}^{1/4} \sigma(\omega, r) F_-(A(\omega, r), B(\omega, r), Q(\omega, r)) \frac{dr}{r} &\rightarrow 0 \end{aligned}$$

a.e. in $\omega \in \mathbf{S}^1$ with $0 < \omega_2 < \omega_1$ as $\eta \rightarrow 0^+$. \square

Amplification of Theorem 4.4. The proof given above shows that

$$\mathcal{L}(F) = \mathcal{L}(F_+)$$

for each $F \in C(\mathbf{K})$.

5. COMPUTATION OF THE ASYMPTOTIC DISTRIBUTION OF 3-OBSTACLE CONFIGURATIONS A PROOF OF PROPOSITION 2.6

Having established the existence of the limit $\mathcal{L}(F)$ in Theorem 4.4, we seek an explicit formula for it.

It would be most impractical to first compute $L_{m+1}(f_{m,+})$ — with the notation of the proof of Theorem 4.4 — by its definition in formula (4.13), and then to pass to the limit as $m \rightarrow \infty$.

We shall instead use a different method based on Farey fractions and the asymptotic theory of Kloosterman's sums as in [2].

5.1. 3-obstacle configurations and Farey fractions. For each integer $Q \geq 1$, consider the set of Farey fractions of order $\leq Q$:

$$\mathcal{F}_Q := \left\{ \frac{p}{q} \mid 1 \leq p \leq q \leq Q, \text{ g.c.d.}(p, q) = 1 \right\}.$$

If $\gamma = \frac{p}{q} < \gamma' = \frac{p'}{q'}$ are two consecutive elements of \mathcal{F}_Q , then

$$q + q' > Q, \quad \text{and } p'q - pq' = 1.$$

For each interval $I \subset [0, 1]$, we denote

$$\mathcal{F}_Q(I) = I \cap \mathcal{F}_Q.$$

The following lemma provides a (partial) dictionary between Farey and continued fractions.

Lemma 5.1. *For each $0 < \epsilon < 1$, set $Q = [1/\epsilon]$. Let $0 < \alpha < 1$ be irrational, and let $\gamma = \frac{p}{q}$ and $\gamma' = \frac{p'}{q'}$ be the two consecutive Farey fractions in \mathcal{F}_Q such that $\gamma < \alpha < \gamma'$. Then*

(i) *if $\frac{p}{q} < \alpha < \frac{p'-\epsilon}{q'}$, then*

$$q_{N(\alpha, \epsilon)}(\alpha) = q \text{ and } d_{N(\alpha, \epsilon)}(\alpha) = q\alpha - p;$$

(ii) *if $\frac{p'-\epsilon}{q'} \leq \alpha \leq \frac{p+\epsilon}{q}$, then*

$$q_{N(\alpha, \epsilon)}(\alpha) = \min(q, q')$$

while

$$d_{N(\alpha, \epsilon)}(\alpha) = q\alpha - p \text{ if } q < q', \text{ and } d_{N(\alpha, \epsilon)}(\alpha) = p' - q'\alpha \text{ if } q' < q;$$

(iii) *if $\frac{p+\epsilon}{q} < \alpha < \frac{p'}{q'}$, then*

$$q_{N(\alpha, \epsilon)}(\alpha) = q' \text{ and } d_{N(\alpha, \epsilon)}(\alpha) = p' - q'\alpha.$$

Sketch of the proof. According to Dirichlet's lemma, for each integer $Q \geq 1$, there exists an integer \hat{q} such that $1 \leq \hat{q} \leq Q$ and $\text{dist}(\hat{q}\alpha, \mathbf{Z}) < \frac{1}{Q+1}$. If $\frac{p''}{q''} \in \mathcal{F}_Q$ is different from $\frac{p}{q}$ and $\frac{p'}{q'}$, then \hat{q} cannot be equal to q'' . For if $\alpha < \frac{p'}{q'} < \frac{p''}{q''}$, then $p'' - q''\alpha > \frac{1}{q''}(p''q' - p'q'') \geq \frac{1}{q''} \geq \frac{1}{Q+1}$. Thus \hat{q} is one of the two integers q and q' . In the case (i) $p' - q'\alpha > \epsilon > \frac{1}{Q+1}$ so that $\hat{q} \neq q'$, hence $\hat{q} = q$. Likewise, in the case (iii) $q\alpha - p > \epsilon > \frac{1}{Q+1}$ so that $\hat{q} = q'$. In the case (ii), one has

$$0 \leq \frac{1}{q'}(1 - q\epsilon) = \frac{1}{q'}(qp' - pq' - q\epsilon) \leq q\alpha - p \leq \epsilon$$

since $q \leq Q \leq \frac{1}{\epsilon}$. Likewise $0 \leq p' - q'\alpha \leq \epsilon$, so that \hat{q} is the smaller of q and q' . \square

In fact, the parameters $(A(\omega, r), B(\omega, r), Q(\omega, r))$ can be computed in terms of Farey fractions, by a slight amplification of the proposition above. We recall that, for each $\omega \in \mathbf{S}^1$ such that $0 < \omega_2 < \omega_1$ and ω_2/ω_1 is irrational, one has

$$Q(\omega, r) = \epsilon q_{N(\alpha, \epsilon)}(\alpha), \quad \text{with } \alpha = \frac{\omega_2}{\omega_1} \text{ and } \epsilon = \frac{2r}{\omega_1}.$$

Under the same conditions on ω , we define

$$D(\omega, r) := \frac{d_{N(\alpha, \epsilon)}}{\epsilon}, \quad \text{again with } \alpha = \frac{\omega_2}{\omega_1} \text{ and } \epsilon = \frac{2r}{\omega_1},$$

and $Q'(\omega, r)$ in the following manner.

Let $\mathcal{Q} = [1/\epsilon]$ with $\epsilon = \frac{2r}{\omega_1}$, and let $\gamma = \frac{p}{q}$ and $\gamma' = \frac{p'}{q'}$ be the two consecutive Farey fractions in $\mathcal{F}_{\mathcal{Q}}$ such that $\gamma < \alpha < \gamma'$. Then

(i) if $\frac{p}{q} < \alpha < \frac{p'-\epsilon}{q'}$, we set

$$Q'(\omega, r) := \epsilon q';$$

(ii) if $\frac{p'-\epsilon}{q'} \leq \alpha \leq \frac{p+\epsilon}{q}$, we set

$$Q'(\omega, r) := \epsilon \max(q, q');$$

(iii) if $\frac{p+\epsilon}{q} < \alpha < \frac{p'}{q'}$, we set

$$Q'(\omega, r) := \epsilon q.$$

With these definitions, the 3-obstacle configuration parameters are easily expressed in terms of Farey fractions, as follows.

Proposition 5.2. *Let $0 < r < \frac{1}{4}$ and $\omega \in \mathbf{S}^1$ be such that $0 < \omega_2 < \omega_1$ and ω_2/ω_1 is irrational. Then*

$$A(\omega, r) = 1 - D(\omega, r),$$

while

$$B(\omega, r) = b(\omega, r) - \left[\frac{b(\omega, r)}{D(\omega, r)} \right] D(\omega, r),$$

with

$$b(\omega, r) = \frac{Q(\omega, r) - 1 + Q'(\omega, r)D(\omega, r)}{Q(\omega, r)}.$$

Sketch of the proof. We follow the discussion in Propositions 1 and 2 of [2]. Consider the case $\frac{p}{q} < \alpha < \frac{p'-\epsilon}{q'}$, and set $d = q\alpha - p > 0$ and $d' = p' - q'\alpha > 0$. According to Proposition 1 of [2], $\epsilon B(\omega, r) = \epsilon - (p_k - q_k\alpha)$, with the notation $p_k = p' + kp$ et $q_k = q' + kq$ for $k \in \mathbf{N}^*$ chosen so that

$$\frac{p' + kp - \epsilon}{q' + kq} < \alpha < \frac{p' + (k-1)p - \epsilon}{q' + (k-1)q}.$$

In other words, k is chosen so that $d' - kd \leq \epsilon < d' - (k-1)d$, where $d = q\alpha - p$ and $d' = p' - q'\alpha$. That is to say,

$$-k = \left\lfloor \frac{\epsilon - d'}{d} \right\rfloor = \left\lfloor \frac{1 - d'/\epsilon}{D} \right\rfloor,$$

and

$$B = 1 - \frac{d' - kd}{\epsilon} = 1 - \frac{d'}{\epsilon} + k\frac{d}{\epsilon} = b - \left\lfloor \frac{b}{D} \right\rfloor D$$

with $b = 1 - \frac{d'}{\epsilon}$. Since $qp' - pq' = 1$, one has $d' = (1 - q'd)/q$, so that $b = \frac{Q-1-Q'D}{Q}$. The other cases are treated similarly. \square

5.2. Asymptotic distribution of (Q, Q', D) . As a first step in computing $\mathcal{L}(F)$, we establish the following

Lemma 5.3. *Let $f \in C([0, 1]^3)$ and $J = [\alpha_-, \alpha_+] \subset (0, 1)$. Then*

$$\begin{aligned} \int_{\mathbf{S}_+^1} f(Q(\omega, \tfrac{1}{2}\epsilon\omega_1), Q'(\omega, \tfrac{1}{2}\epsilon\omega_1), D(\omega, \tfrac{1}{2}\epsilon\omega_1)) \mathbf{1}_{\omega_2/\omega_1 \in J} \frac{d\omega}{\omega_1^2} \\ \rightarrow |J| \int_{[0, 1]^3} f(Q, Q', D) d\lambda(Q, Q', D) \end{aligned}$$

as $\epsilon \rightarrow 0^+$, where λ is the probability measure on $[0, 1]^3$ given by

$$d\lambda(Q, Q', D) = \frac{12}{\pi^2} \left(\mathbf{1}_{0 < Q, Q' < 1} \mathbf{1}_{Q+Q' > 1} \mathbf{1}_{0 < D < \frac{1-Q}{Q}} + \mathbf{1}_{Q < Q'} \mathbf{1}_{\frac{1-Q}{Q'} < D < 1} \right) \frac{dQdQ'dD}{Q}$$

The proof of this lemma is based on the arguments involving Kloosterman's sums to be found in [2].

Proof. For $0 < \epsilon < 1$, set $\mathcal{Q} = [1/\epsilon]$. Observe that

$$\begin{aligned} \left| Q(\omega, \tfrac{1}{2}\epsilon\omega_1) - \frac{1}{\epsilon\mathcal{Q}} Q(\omega, \tfrac{1}{2}\epsilon\omega_1) \right| &\leq \frac{1}{\mathcal{Q}+1} \frac{Q(\omega, \tfrac{1}{2}\epsilon\omega_1)}{\epsilon\mathcal{Q}} \leq \frac{1}{\mathcal{Q}+1}, \\ \left| Q'(\omega, \tfrac{1}{2}\epsilon\omega_1) - \frac{1}{\epsilon\mathcal{Q}} Q'(\omega, \tfrac{1}{2}\epsilon\omega_1) \right| &\leq \frac{1}{\mathcal{Q}+1} \frac{Q'(\omega, \tfrac{1}{2}\epsilon\omega_1)}{\epsilon\mathcal{Q}} \leq \frac{1}{\mathcal{Q}+1}, \end{aligned}$$

since $Q(\omega, \frac{1}{2}\epsilon\omega_1) \leq \epsilon\mathcal{Q}$ and $Q'(\omega, \frac{1}{2}\epsilon\omega_1) \leq \epsilon\mathcal{Q}$ while

$$|D(\omega, \tfrac{1}{2}\epsilon\omega_1) - \epsilon\mathcal{Q}D(\omega, \tfrac{1}{2}\epsilon\omega_1)| \leq \epsilon \left| \frac{1}{\epsilon} - \mathcal{Q} \right| \leq \epsilon \leq \frac{1}{\mathcal{Q}}$$

since $D(\omega, \frac{1}{2}\epsilon\omega_1) \leq 1$.

Since f is continuous on the compact set $[0, 1]^3$, it is uniformly continuous; let ρ be a modulus of continuity for f . Then

$$\begin{aligned} (5.1) \quad &\left| \int_{\mathbf{S}_+^1} f(Q(\omega, \tfrac{1}{2}\epsilon\omega_1), Q'(\omega, \tfrac{1}{2}\epsilon\omega_1), D(\omega, \tfrac{1}{2}\epsilon\omega_1)) \frac{d\omega}{\omega_1^2} \right. \\ &\quad \left. - \int_{\mathbf{S}_+^1} f\left(\frac{1}{\epsilon\mathcal{Q}}Q(\omega, \tfrac{1}{2}\epsilon\omega_1), \frac{1}{\epsilon\mathcal{Q}}Q'(\omega, \tfrac{1}{2}\epsilon\omega_1), \epsilon\mathcal{Q}D(\omega, \tfrac{1}{2}\epsilon\omega_1)\right) \frac{d\omega}{\omega_1^2} \right| \\ &\leq 3\rho(1/\mathcal{Q}) \rightarrow 0 \end{aligned}$$

as $\epsilon \rightarrow 0^+$.

Henceforth, we seek to prove that

$$(5.2) \quad \int_{\mathbf{S}_+^1} f \left(\frac{1}{\epsilon \mathcal{Q}} Q(\omega, \frac{1}{2}\epsilon\omega_1), \frac{1}{\epsilon \mathcal{Q}} Q'(\omega, \frac{1}{2}\epsilon\omega_1), \epsilon \mathcal{Q} D(\omega, \frac{1}{2}\epsilon\omega_1) \right) \mathbf{1}_{\omega_2/\omega_1 \in J} \frac{d\omega}{\omega_1^2} \\ \rightarrow |J| \int_{[0,1]^3} f(Q, Q', D) d\lambda(Q, Q', D)$$

as $\epsilon \rightarrow 0^+$. Without loss of generality, by an obvious density argument we restrict our attention to the case where the test function f is of the form

$$f(Q, Q', D) = g(Q, Q')h(D),$$

with $g \in C([0, 1]^2)$ and $h \in C([0, 1])$. Then

$$(5.3) \quad \int_{\mathbf{S}_+^1} g \left(\frac{1}{\epsilon \mathcal{Q}} Q(\omega, \frac{1}{2}\epsilon\omega_1), \frac{1}{\epsilon \mathcal{Q}} Q'(\omega, \frac{1}{2}\epsilon\omega_1) \right) h(\epsilon \mathcal{Q} D(\omega, \frac{1}{2}\epsilon\omega_1)) \mathbf{1}_{\omega_2/\omega_1 \in I} \frac{d\omega}{\omega_1^2} \\ = \sum_{p/q \in \mathcal{F}_{\mathcal{Q}}(J)} \int_{\frac{p}{q}}^{\frac{p'+\epsilon}{q}} g \left(\frac{q}{\mathcal{Q}}, \frac{q'}{\mathcal{Q}} \right) h(\mathcal{Q}(q\alpha - p)) d\alpha \\ + \sum_{p/q \in \mathcal{F}_{\mathcal{Q}}(J)} \int_{\frac{p'+\epsilon}{q}}^{\frac{p'}{q'}} g \left(\frac{q'}{\mathcal{Q}}, \frac{q}{\mathcal{Q}} \right) h(\mathcal{Q}(p' - q'\alpha)) d\alpha \\ + \sum_{p/q \in \mathcal{F}_{\mathcal{Q}}(J)} \int_{\frac{p'+\epsilon}{q}}^{\frac{p+\epsilon}{q}} \mathbf{1}_{q < q'} g \left(\frac{q}{\mathcal{Q}}, \frac{q'}{\mathcal{Q}} \right) h(\mathcal{Q}(q\alpha - p)) d\alpha \\ + \sum_{p/q \in \mathcal{F}_{\mathcal{Q}}(J)} \int_{\frac{p'+\epsilon}{q'}}^{\frac{p+\epsilon}{q}} \mathbf{1}_{q' < q} g \left(\frac{q'}{\mathcal{Q}}, \frac{q}{\mathcal{Q}} \right) h(\mathcal{Q}(p' - q'\alpha)) d\alpha \\ + \|g\|_{L^\infty} \|h\|_{L^\infty} O \left(\sup_{p/q \in \mathcal{F}_{\mathcal{Q}}(J)} \left| \frac{p'}{q'} - \frac{p}{q} \right| + \sup_{p'/q' \in \mathcal{F}_{\mathcal{Q}}(J)} \left| \frac{p'}{q'} - \frac{p}{q} \right| \right) \\ = I + II + III + IV + O(1/\mathcal{Q})$$

where $\frac{p}{q} < \frac{p'}{q'}$ are consecutive elements of $\mathcal{F}_{\mathcal{Q}}$. Notice that the O term above is the contribution of the endpoints of J not being elements of $\mathcal{F}_{\mathcal{Q}}$.

Define

$$H(z) = \int_0^z h(y) dy, \quad \text{for each } z \in \mathbf{R}.$$

Thus

$$I = \sum_{p/q \in \mathcal{F}_{\mathcal{Q}}(J)} g \left(\frac{q}{\mathcal{Q}}, \frac{q'}{\mathcal{Q}} \right) \frac{1}{\mathcal{Q}q} H \left(\mathcal{Q} \frac{1 - \epsilon q}{q'} \right) \\ II = \sum_{p/q \in \mathcal{F}_{\mathcal{Q}}(J)} g \left(\frac{q'}{\mathcal{Q}}, \frac{q}{\mathcal{Q}} \right) \frac{1}{\mathcal{Q}q'} H \left(\mathcal{Q} \frac{1 - \epsilon q'}{q} \right) \\ III = \sum_{p/q \in \mathcal{F}_{\mathcal{Q}}(J)} \mathbf{1}_{q < q'} g \left(\frac{q}{\mathcal{Q}}, \frac{q'}{\mathcal{Q}} \right) \frac{1}{\mathcal{Q}q} \left(H(\epsilon \mathcal{Q}) - H \left(\mathcal{Q} \frac{1 - \epsilon q}{q'} \right) \right) \\ IV = \sum_{p/q \in \mathcal{F}_{\mathcal{Q}}(J)} \mathbf{1}_{q' < q} g \left(\frac{q'}{\mathcal{Q}}, \frac{q}{\mathcal{Q}} \right) \frac{1}{\mathcal{Q}q'} \left(H(\epsilon \mathcal{Q}) - H \left(\mathcal{Q} \frac{1 - \epsilon q'}{q} \right) \right)$$

One has

$$\begin{aligned} \left| H\left(\mathcal{Q}\frac{1-\epsilon q}{q'}\right) - H\left(\mathcal{Q}\frac{1-q/\mathcal{Q}}{q'}\right) \right| &\leq \|h\|_{L^\infty} \mathcal{Q} \frac{q}{q'} \left| \frac{1}{\mathcal{Q}} - \epsilon \right| \\ &\leq \|h\|_{L^\infty} \mathcal{Q} \frac{q}{q'} \frac{1}{\mathcal{Q}(\mathcal{Q}+1)}; \end{aligned}$$

likewise

$$\left| H\left(\mathcal{Q}\frac{1-\epsilon q'}{q}\right) - H\left(\mathcal{Q}\frac{1-q'/\mathcal{Q}}{q}\right) \right| \leq \|h\|_{L^\infty} \mathcal{Q} \frac{q'}{q} \frac{1}{\mathcal{Q}(\mathcal{Q}+1)},$$

while

$$|H(1) - H(\epsilon\mathcal{Q})| \leq \|h\|_{L^\infty} |1 - \epsilon\mathcal{Q}| = \|h\|_{L^\infty} \epsilon \left| \frac{1}{\epsilon} - \mathcal{Q} \right| \leq \|h\|_{L^\infty} \epsilon.$$

Hence

$$I = \sum_{p/q \in \mathcal{F}_{\mathcal{Q}}(J)} g\left(\frac{q}{\mathcal{Q}}, \frac{q'}{\mathcal{Q}}\right) \frac{1}{\mathcal{Q}q} H\left(\frac{1-q/\mathcal{Q}}{q'/\mathcal{Q}}\right) + R_I$$

with

$$|R_I| \leq \|g\|_{L^\infty} \|h\|_{L^\infty} \sum_{p/q \in \mathcal{F}_{\mathcal{Q}}(J)} \frac{1}{q'\mathcal{Q}(\mathcal{Q}+1)}.$$

Applying Lemmas 1 and 2 in [2] shows that

$$\begin{aligned} &\sum_{p/q \in \mathcal{F}_{\mathcal{Q}}(J)} g\left(\frac{q}{\mathcal{Q}}, \frac{q'}{\mathcal{Q}}\right) \frac{1}{\mathcal{Q}q} H\left(\frac{1-q/\mathcal{Q}}{q'/\mathcal{Q}}\right) \\ &\rightarrow |J| \cdot \frac{6}{\pi^2} \iint_{(0,1)^2} g(Q, Q') H\left(\frac{1-Q}{Q'}\right) \mathbf{1}_{Q+Q'>1} \frac{dQdQ'}{Q} \text{ as } \mathcal{Q} \rightarrow \infty, \end{aligned}$$

while

$$|R_I| \lesssim \|g\|_{L^\infty} \|h\|_{L^\infty} \frac{1}{\mathcal{Q}} \cdot |J| \cdot \frac{6}{\pi^2} \iint_{(0,1)^2} \mathbf{1}_{Q+Q'>1} \frac{dQdQ'}{Q'} = O(1/\mathcal{Q}),$$

so that

$$(5.4) \quad I \rightarrow |J| \cdot \frac{6}{\pi^2} \iint_{(0,1)^2} g(Q, Q') H\left(\frac{1-Q}{Q'}\right) \mathbf{1}_{Q+Q'>1} \frac{dQdQ'}{Q} \text{ as } \mathcal{Q} \rightarrow \infty.$$

By a similar argument, one shows that

$$\begin{aligned} II &\rightarrow |J| \cdot \frac{6}{\pi^2} \iint_{(0,1)^2} g(Q', Q) H\left(\frac{1-Q'}{Q}\right) \mathbf{1}_{Q+Q'>1} \frac{dQdQ'}{Q'}, \\ (5.5) \quad III &\rightarrow |J| \cdot \frac{6}{\pi^2} \iint_{(0,1)^2} g(Q, Q') \left(H(1) - H\left(\frac{1-Q}{Q'}\right)\right) \mathbf{1}_{Q<Q'} \mathbf{1}_{Q+Q'>1} \frac{dQdQ'}{Q}, \\ IV &\rightarrow |J| \cdot \frac{6}{\pi^2} \iint_{(0,1)^2} g(Q', Q) \left(H(1) - H\left(\frac{1-Q'}{Q}\right)\right) \mathbf{1}_{Q'<Q} \mathbf{1}_{Q+Q'>1} \frac{dQdQ'}{Q'}, \end{aligned}$$

as $\mathcal{Q} \rightarrow \infty$.

Substituting the limits (5.4)-(5.5) in (5.3) shows that

$$\begin{aligned} &\int_{\mathbf{S}_+^1} g\left(\frac{1}{\epsilon\mathcal{Q}}Q(\omega, \frac{1}{2}\epsilon\omega_1), \frac{1}{\epsilon\mathcal{Q}}Q'(\omega, \frac{1}{2}\epsilon\omega_1)\right) h\left(\epsilon\mathcal{Q}D(\omega, \frac{1}{2}\epsilon\omega_1)\right) \mathbf{1}_{\omega_2/\omega_1 \in J} \frac{d\omega}{\omega_1^2} \\ &\rightarrow |J| \cdot \frac{12}{\pi^2} \iiint_{(0,1)^3} g(Q, Q') h(D) \mathbf{1}_{Q+Q'>1} \mathbf{1}_{0<D<\frac{1-Q}{Q'}} \frac{dQdQ'dD}{Q} \\ &\quad + |J| \cdot \frac{12}{\pi^2} \iiint_{(0,1)^3} g(Q, Q') h(D) \mathbf{1}_{Q<Q'} \mathbf{1}_{Q+Q'>1} \mathbf{1}_{\frac{1-Q}{Q'}<D<1} \frac{dQdQ'dD}{Q} \end{aligned}$$

as $\epsilon \rightarrow 0$, which establishes (5.2).

On account of (5.1), this proves the convergence announced in Lemma 5.3. \square

5.3. Asymptotic distribution of (A, B, Q) . Next we compute the image the probability measure λ under the map $(Q, Q', D) \mapsto (A, B, Q)$ defined in Proposition 5.2. In other words:

Lemma 5.4. *Let $g \in C([0, 1]^3)$. Then*

$$\begin{aligned} \int_{\mathbf{S}_+^1} g(A(\omega, \tfrac{1}{2}\epsilon\omega_1), B(\omega, \tfrac{1}{2}\epsilon\omega_1), Q(\omega, \tfrac{1}{2}\epsilon\omega_1)) \frac{d\omega}{\omega_1^2} \\ \rightarrow \int_{[0,1]^3} g(A, B, Q) d\nu(A, B, Q) \end{aligned}$$

as $\epsilon \rightarrow 0^+$, where ν is the probability measure on $[0, 1]^3$ given by

$$d\nu(A, B, Q) = \frac{12}{\pi^2} \mathbf{1}_{0 < A < 1} \mathbf{1}_{0 < B < 1-A} \mathbf{1}_{0 < Q < \frac{1}{2-A-B}} \frac{dAdBdQ}{1-A}.$$

Proof. We first compute the image $\Phi_*\lambda$ of the probability measure λ under the map

$$\begin{aligned} \Phi : [0, 1]^3 &\rightarrow [0, 1] \times \mathbf{R} \times [0, 1] \\ (Q, Q', D) &\mapsto (A, b, Q) = (1 - D, \frac{Q-1+Q'D}{Q}, Q) \end{aligned}$$

The Jacobian of Φ is

$$\det \nabla \Phi(Q, Q', D) = \begin{vmatrix} 0 & \frac{1-Q'D}{Q^2} & 1 \\ 0 & \frac{D}{Q} & 0 \\ -1 & \frac{Q'}{Q} & 0 \end{vmatrix} = \frac{D}{Q} = \frac{1-A}{Q},$$

A straightforward computation shows that

$$\begin{aligned} d\Phi_*\lambda(A, b, Q) = \\ \frac{12}{\pi^2} \mathbf{1}_{0 < A, Q < 1} \mathbf{1}_{1-\frac{1}{Q} < b < 1-\frac{A}{Q}} \left(\mathbf{1}_{A-\frac{A}{Q} < b < 0} + \mathbf{1}_{b > 0} \mathbf{1}_{b > 2-A-\frac{1}{Q}} \right) \frac{dAdbdQ}{1-A}. \end{aligned}$$

This expression can be put in the form

$$(5.6) \quad d\Phi_*\lambda(A, b, Q) = \frac{12}{\pi^2} \mathbf{1}_{0 < A, Q < 1} (\mathbf{1}_{b \in \Lambda_1(A, Q)} + \mathbf{1}_{b \in \Lambda_2(A, Q)}) \frac{dAdbdQ}{1-A}$$

where

$$\begin{aligned} \Lambda_1(A, Q) &= (A - \frac{A}{Q}, (1 - \frac{A}{Q}) \wedge 0) \\ \Lambda_2(A, Q) &= ((2 - A - \frac{1}{Q}) \vee 0, (1 - \frac{A}{Q})) \end{aligned}$$

The probability measure ν is the image of $\Phi_*\lambda$ under the map

$$\begin{aligned} \Psi : [0, 1] \times \mathbf{R} \times [0, 1] &\rightarrow [0, 1]^3 \\ (A, b, Q) &\mapsto (A, B, Q) = (A, b - [\frac{b}{1-A}](1-A), Q) \end{aligned}$$

In other words,

$$\begin{aligned} (5.7) \quad d\nu(A, B, Q) &= \frac{12}{\pi^2} \mathbf{1}_{0 < A, Q < 1} \mathbf{1}_{0 < B < 1-A} \frac{dAdbdQ}{1-A} \\ &\cdot \sum_{n \in \mathbf{Z}} (\mathbf{1}_{\Lambda_1(A, Q)}(B + n(1-A)) + \mathbf{1}_{\Lambda_2(A, Q)}(B + n(1-A))) \\ &= \frac{12}{\pi^2} M(A, B, Q) \mathbf{1}_{0 < A, Q < 1} \mathbf{1}_{0 < B < 1-A} \frac{dAdbdQ}{1-A} \end{aligned}$$

where

$$(5.8) \quad M(A, B, Q) = \#\{n \in \mathbf{Z} \mid B + n(1 - A) \in \Lambda_1(A, Q)\}, \\ + \#\{n \in \mathbf{Z} \mid B + n(1 - A) \in \Lambda_2(A, Q)\}.$$

Whenever $u, v \notin \mathbf{Z}$, one has

$$\#\{m \in \mathbf{Z} \mid m \in (u, v)\} = ([v] - [u])_+.$$

Hence, for a.e. $A, Q \in [0, 1]$

$$\begin{aligned} & \#\{n \in \mathbf{Z} \mid B + n(1 - A) \in \Lambda_1(A, Q)\} \\ &= \left[\frac{(1 - A/Q) \wedge 0 - B}{1 - A} \right] - \left[\frac{A - A/Q - B}{1 - A} \right] \end{aligned}$$

— since

$$\frac{(1 - A/Q) \wedge 0 - B}{1 - A} - \frac{A - A/Q - B}{1 - A} = \frac{(1 - A) \wedge (A/Q - A)}{1 - A} \geq 0.$$

For a.e. $A, Q \in [0, 1]$, if $Q \leq A$

$$\begin{aligned} & \left[\frac{(1 - A/Q) \wedge 0 - B}{1 - A} \right] - \left[\frac{A - A/Q - B}{1 - A} \right] \\ &= \left[\frac{1 - A/Q - B}{1 - A} \right] - \left[\frac{A - A/Q - B}{1 - A} \right] \\ &= \left[\frac{A - A/Q - B}{1 - A} + 1 \right] - \left[\frac{A - A/Q - B}{1 - A} \right] = 1. \end{aligned}$$

Likewise, for a.e. $A, Q \in [0, 1]$

$$\begin{aligned} & \#\{n \in \mathbf{Z} \mid B + n(1 - A) \in \Lambda_2(A, Q)\} \\ &= \mathbf{1}_{Q > A} \left(\left[\frac{1 - A/Q - B}{1 - A} \right] - \left[\frac{(2 - A - 1/Q) \vee 0 - B}{1 - A} \right] \right) \end{aligned}$$

— observe that, whenever $Q \leq A$, one has $2 - A - 1/Q \leq 2 - A - 1/A \leq 0$, so that

$$\frac{1 - A/Q - B}{1 - A} - \frac{(2 - A - 1/Q) \vee 0 - B}{1 - A} = \frac{1 - A/Q}{1 - A} \leq 0,$$

while, if $Q > A$,

$$\begin{aligned} & \frac{1 - A/Q - B}{1 - A} - \frac{(2 - A - 1/Q) \vee 0 - B}{1 - A} \\ &= \frac{(1 - A/Q) \wedge (A - 1)(1 - 1/Q)}{1 - A} \geq 0. \end{aligned}$$

Therefore

$$\begin{aligned}
& \#\{n \in \mathbf{Z} \mid B + n(1-A) \in \Lambda_1(A, Q)\} \\
& + \#\{n \in \mathbf{Z} \mid B + n(1-A) \in \Lambda_2(A, Q)\} \\
= & \mathbf{1}_{Q \leq A} + \mathbf{1}_{Q > A} \left(\left[\frac{(1-A/Q) \wedge 0 - B}{1-A} \right] - \left[\frac{A - A/Q - B}{1-A} \right] \right. \\
& \left. + \left[\frac{1 - A/Q - B}{1-A} \right] - \left[\frac{(2-A-1/Q) \vee 0 - B}{1-A} \right] \right) \\
= & \mathbf{1}_{Q \leq A} + \mathbf{1}_{Q > A} \left(\left[\frac{(1-A/Q) \wedge 0 - B}{1-A} \right] + 1 \right. \\
& \left. - \left[\frac{(2-A-1/Q) \vee 0 - B}{1-A} \right] \right) \\
= & 1 + \mathbf{1}_{Q > A} \left(\left[\frac{-B}{1-A} \right] - \left[\frac{(2-A-1/Q) \vee 0 - B}{1-A} \right] \right).
\end{aligned}$$

Now, if $Q \leq \frac{1}{2-A}$,

$$\left[\frac{(2-A-1/Q) \vee 0 - B}{1-A} \right] = \left[\frac{-B}{1-A} \right]$$

while $Q > A$ if $Q > \frac{1}{2-A}$ since $A + 1/A > 2$, so that

$$\begin{aligned}
M(A, B, Q) &= \#\{n \in \mathbf{Z} \mid B + n(1-A) \in \Lambda_1(A, Q)\} \\
& + \#\{n \in \mathbf{Z} \mid B + n(1-A) \in \Lambda_2(A, Q)\} \\
&= 1 + \mathbf{1}_{Q > \frac{1}{2-A}} \left(\left[\frac{-B}{1-A} \right] - \left[\frac{2-A-1/Q-B}{1-A} \right] \right).
\end{aligned}$$

If $\frac{1}{2-A} < Q \leq 1$ and $0 < B < 1-A$, one has

$$-(1-A) < 2-A-1/Q-B < (1-A)$$

so that

$$\begin{aligned}
\left[\frac{-B}{1-A} \right] &= -1, \\
\left[\frac{2-A-1/Q-B}{1-A} \right] &= 0, \quad \text{if } 2-A-B \geq 1/Q, \\
\left[\frac{2-A-1/Q-B}{1-A} \right] &= -1, \quad \text{if } 2-A-B < 1/Q.
\end{aligned}$$

Therefore

$$\begin{aligned}
(5.9) \quad M(A, B, Q) &= 1 + \mathbf{1}_{Q > \frac{1}{2-A}} \left(\left[\frac{-B}{1-A} \right] - \left[\frac{2-A-1/Q-B}{1-A} \right] \right) \\
&= 1 - \mathbf{1}_{Q > \frac{1}{2-A}} \mathbf{1}_{2-A-B \geq 1/Q} = \mathbf{1}_{Q < \frac{1}{2-A-B}}
\end{aligned}$$

and this establishes the formula for ν in the lemma. \square

5.4. Computation of $\mathcal{L}(F)$. With the help of Lemma 5.4, we finally compute $\mathcal{L}(F)$.

Proof of Proposition 2.6. Let $F \in C(\mathbf{K})$, and set

$$F_+(A, B, Q) = \frac{1}{2} (F(A, B, Q, +1) + F(A, B, Q, -1));$$

obviously $F_+ \in C([0, 1]^3)$.

By Lemma 5.4

$$\begin{aligned} \frac{1}{\ln(\eta_*/\eta)} \int_{\eta}^{\eta_*} \left(\int_{\mathbf{S}_+^1} F_+(A(\omega, \frac{1}{2}\epsilon\omega_1), B(\omega, \frac{1}{2}\epsilon\omega_1), Q(\omega, \frac{1}{2}\epsilon\omega_1)) \frac{d\omega}{\omega_1^2} \right) \frac{d\epsilon}{\epsilon} \\ \rightarrow \frac{\pi}{4} \int_{[0,1]^3} F_+(A, B, Q) d\nu(A, B, Q) \end{aligned}$$

as $\eta \rightarrow 0^+$, for each $\eta_* > 0$.

On the other hand, by Fubini's theorem

$$\begin{aligned} \frac{1}{\ln(\eta_*/\eta)} \int_{\eta}^{\eta_*} \left(\int_{\mathbf{S}_+^1} F_+(A(\omega, \frac{1}{2}\epsilon\omega_1), B(\omega, \frac{1}{2}\epsilon\omega_1), Q(\omega, \frac{1}{2}\epsilon\omega_1)) \frac{d\omega}{\omega_1^2} \right) \frac{d\epsilon}{\epsilon} \\ = \int_{\mathbf{S}_+^1} \left(\frac{1}{\ln(\eta_*/\eta)} \int_{\eta}^{\eta_*} F_+(A(\omega, \frac{1}{2}\epsilon\omega_1), B(\omega, \frac{1}{2}\epsilon\omega_1), Q(\omega, \frac{1}{2}\epsilon\omega_1)) \frac{d\epsilon}{\epsilon} \right) \frac{d\omega}{\omega_1^2} \\ = \int_{\mathbf{S}_+^1} \left(\frac{1}{\ln(\eta_*/\eta)} \int_{\omega_1\eta/2}^{\omega_1\eta_*/2} F_+(A(\omega, r), B(\omega, r), Q(\omega, r)) \frac{dr}{r} \right) \frac{d\omega}{\omega_1^2}. \end{aligned}$$

By Theorem 4.4, the inner integral on the right hand side of the equality above converges a.e. in $\omega \in \mathbf{S}_+^1$ to $\mathcal{L}(F_+)$. By dominated convergence, we therefore conclude that

$$\mathcal{L}(F_+) = \int_{[0,1]^3} F_+(A, B, Q) d\nu(A, B, Q).$$

Finally, according to the amplification of Theorem 4.4

$$\mathcal{L}(F) = \int_{[0,1]^3} F_+(A, B, Q) d\nu(A, B, Q)$$

or, in other words,

$$\mathcal{L}(F) = \int_{[0,1]^3 \times \{\pm 1\}} F(A, B, Q, \sigma) d\mu(A, B, Q, \sigma)$$

where

$$d\mu(A, B, Q, \sigma) = \frac{1}{2} d\nu(A, B, Q) \otimes (\delta_{\sigma=+1} + \delta_{\sigma=-1}).$$

□

6. THE TRANSITION PROBABILITY: A PROOF OF THEOREM 2.1

6.1. Computation of $P(S, h|h')$. We first establish that the image of the probability ν defined in Lemma 5.4 under the map

$$[0, 1]^3 \ni (A, B, Q) \mapsto \mathbf{T}_{A, B, Q, +1}(h') \in \mathbf{R}_+ \times [-1, 1]$$

is of the form $P_+(S, h|h') dS dh$, with a probability density P_+ which we compute in the present section. Let $f \in C_c(\mathbf{R}_+ \times [-1, 1])$; the identity

$$\int_{\mathbf{R}_+ \times [-1, 1]} f(S, h) P_+(S, h|h') dS dh = \int_{[0,1]^3} f(\mathbf{T}_{A, B, Q, +1}(h')) d\nu(A, B, Q)$$

defining $P_+(S, h|h')$ is recast as

$$\begin{aligned} & \int_{\mathbf{R}_+ \times [-1, 1]} f(S, h) P_+(S, h|h') dS dh \\ &= \int_{[0, 1]^3} f(Q, h' - 2(1 - A)) \mathbf{1}_{1-2A < h' < 1} d\nu(A, B, Q) \\ &+ \int_{[0, 1]^3} f\left(\frac{1-Q(1-B)}{1-A}, h' + 2(1 - B)\right) \mathbf{1}_{-1 < h' < -1+2B} d\nu(A, B, Q) \\ &+ \int_{[0, 1]^3} f\left(\frac{1-Q(B-A)}{1-A}, h' + 2(A - B)\right) \mathbf{1}_{-1+2B < h' < 1-2A} d\nu(A, B, Q) \\ &= I + II + III. \end{aligned}$$

In I, we first integrate in B , since the argument of f does not involve B . Observing that $0 \vee (2 - A - \frac{1}{Q}) < B < 1 - A$, we have to distinguish two cases, namely $0 < Q < \frac{1}{2-A}$ and $\frac{1}{2-A} < Q < 1$, which leads to

$$I = \frac{12}{\pi^2} \iint f(Q, h' - 2(1 - A)) \mathbf{1}_{(1-h')/2 < A < 1} \left(\mathbf{1}_{0 < Q < \frac{1}{2-A}} + \frac{1-Q}{Q(1-A)} \mathbf{1}_{\frac{1}{2-A} < Q < 1} \right) dQ dA.$$

In the right-hand side of the equality above, we set $S = Q$ and $h = h' - 2(1 - A)$, to find

$$I = \frac{6}{\pi^2} \iint f(S, h) \mathbf{1}_{-1 < h < h' < 1} \left(\mathbf{1}_{0 < S < \frac{1}{1+(h'-h)/2}} + \frac{2(1-S)}{S(h'-h)} \mathbf{1}_{\frac{1}{1+\eta} < S < 1} \right) dS dh.$$

With the notation $\eta = \frac{1}{2}|h - h'|$, we see that I can be put in the form

$$\begin{aligned} I &= \frac{6}{\pi^2} \iint f(S, h) \mathbf{1}_{-1 < h < h' < 1} \left(S \eta \mathbf{1}_{0 < S < \frac{1}{1+\eta}} + (1 - S) \mathbf{1}_{\frac{1}{1+(h'-h)/2} < S < 1} \right) \frac{dS dh}{S \eta} \\ &= \frac{6}{\pi^2} \iint f(S, h) \mathbf{1}_{-1 < h < h' < 1} \mathbf{1}_{0 < S < 1} (S \eta) \wedge (1 - S) \frac{dS dh}{S \eta}. \end{aligned}$$

As for II, given A , we first make the substitution

$$(S, h) = \left(\frac{1-Q(1-B)}{1-A}, h' + 2(1 - B) \right)$$

whose Jacobian is

$$\frac{\partial(S, h)}{\partial(Q, B)} = \begin{vmatrix} -\frac{1-B}{1-A} & 0 \\ \frac{Q}{1-A} & -2 \end{vmatrix} = \frac{2(1-B)}{1-A} = \frac{h-h'}{1-A}.$$

Hence

$$\begin{aligned} II &= \frac{12}{\pi^2} \int_0^1 \left(\iint f(S, h) \mathbf{1}_{\frac{1}{1-A+(h-h')/2} < S < \frac{1}{1-A}} \mathbf{1}_{A < \frac{h-h'}{2} < 1} \frac{dS dh}{|h-h'|} \right) dA \\ &= \frac{12}{\pi^2} \iint f(S, h) \left(\int_0^1 \mathbf{1}_{\frac{1}{1-A+(h-h')/2} < S < \frac{1}{1-A}} \mathbf{1}_{A < \frac{h-h'}{2} < 1} dA \right) \frac{dS dh}{|h-h'|}. \end{aligned}$$

The inner integral is recast as

$$\begin{aligned} & \int_0^1 \mathbf{1}_{\frac{1}{1-A+(h-h')/2} < S < \frac{1}{1-A}} \mathbf{1}_{A < \frac{h-h'}{2} < 1} dA \\ &= \mathbf{1}_{S > 0} \mathbf{1}_{-1 < h' < h < 1} \int_0^1 \mathbf{1}_{1-1/S < A < 1-1/S+(h-h')/2} \mathbf{1}_{A < \frac{h-h'}{2}} dA \\ &= \mathbf{1}_{S > 0} \mathbf{1}_{-1 < h' < h < 1} \mathbf{1}_{S < 1} \left(1 + \frac{h-h'}{2} - \frac{1}{S} \right)_+ \\ &+ \mathbf{1}_{S > 0} \mathbf{1}_{-1 < h' < h < 1} \mathbf{1}_{S > 1} \left(\frac{h-h'}{2} + \frac{1}{S} - 1 \right)_+ \\ &= \mathbf{1}_{S > 0} \mathbf{1}_{-1 < h' < h < 1} \left(\frac{h-h'}{2} - \left| \frac{1}{S} - 1 \right| \right)_+, \end{aligned}$$

so that, eventually, we find

$$\begin{aligned} II &= \frac{12}{\pi^2} \iint f(S, h) \mathbf{1}_{S>0} \mathbf{1}_{-1<h'<h<1} \left(\frac{h-h'}{2} - \left| \frac{1}{S} - 1 \right| \right)_+ \frac{dSdh}{h-h'} \\ &= \frac{6}{\pi^2} \iint f(S, h) \mathbf{1}_{S>0} \mathbf{1}_{-1<h'<h<1} (S\eta - |1-S|)_+ \frac{dSdh}{S\eta} \end{aligned}$$

Now for III. Here we make the substitution

$$(S, h) = \left(\frac{1-Q(A-B)}{1-A}, h' + 2(A-B) \right)$$

whose Jacobian is

$$\frac{\partial(S, h)}{\partial(Q, B)} = \begin{vmatrix} -\frac{A-B}{1-A} & 0 \\ \frac{Q}{1-A} & -2 \end{vmatrix} = \frac{2(A-B)}{1-A} = \frac{h-h'}{1-A}.$$

This Jacobian vanishes for $A = B$; therefore, we further decompose

$$III = III_1 + III_2$$

with the notations

$$III_1 = \int_{[0,1]^3} f \left(\frac{1-Q(B-A)}{1-A}, h' + 2(A-B) \right) \mathbf{1}_{-1+2B<h'<1-2A} \mathbf{1}_{A<B} d\nu(A, B, Q),$$

$$III_2 = \int_{[0,1]^3} f \left(\frac{1-Q(B-A)}{1-A}, h' + 2(A-B) \right) \mathbf{1}_{-1+2B<h'<1-2A} \mathbf{1}_{A>B} d\nu(A, B, Q).$$

We begin with III_1 . With the substitution above, one has

$$\begin{aligned} III_1 &= \frac{12}{\pi^2} \int_0^1 \left(\iint f(S, h) \mathbf{1}_{2A-1<(h-h')/2<A} \mathbf{1}_{h'<1-2A} \mathbf{1}_{-1+2A<h} \right. \\ &\quad \left. \mathbf{1}_{1/(1-A)<S<1/(1-A+(h-h')/4)} \mathbf{1}_{-1<h<h'<1} \frac{dSdh}{|h-h'|} \right) dA \\ &= \frac{12}{\pi^2} \iint f(S, h) \left(\int_0^1 \mathbf{1}_{2A-1<(h-h')/2<A} \mathbf{1}_{h'<1-2A} \mathbf{1}_{-1+2A<h} \right. \\ &\quad \left. \mathbf{1}_{1/(1-A)<S<1/(1-A+(h-h')/4)} dA \right) \mathbf{1}_{-1<h<h'<1} \frac{dSdh}{|h-h'|}. \end{aligned}$$

The inner integral is

$$\begin{aligned} &\int_0^1 \mathbf{1}_{2A-1<(h-h')/2<A} \mathbf{1}_{h'<1-2A} \mathbf{1}_{-1+2A<h} \mathbf{1}_{1/(1-A)<S<1/(1-A+(h-h')/4)} dA \\ &= \int_0^1 \mathbf{1}_{A<\frac{1}{2}+\frac{1}{4}(h-h')} \mathbf{1}_{A<\frac{1}{2}(1-h')} \mathbf{1}_{A<\frac{1}{2}(1+h)} \mathbf{1}_{1-\frac{1}{S}+\frac{1}{4}(h-h')<A<1-\frac{1}{S}} dA \\ &= \left(\left(\frac{1}{2} + \frac{1}{4}(h-h') \right) \wedge \frac{1}{2}(1-h') \wedge \frac{1}{2}(1+h) \wedge \left(1 - \frac{1}{S} \right) \right. \\ &\quad \left. - \left(1 - \frac{1}{S} + \frac{1}{4}(h-h') \right) \vee 0 \right)_+ \\ &= \left(\left(\frac{1}{2} - \frac{1}{4}|h+h'| - \frac{1}{4}(h'-h) \right) \wedge \left(1 - \frac{1}{S} \right) - \left(1 - \frac{1}{S} - \frac{1}{4}(h'-h) \right) \vee 0 \right)_+. \end{aligned}$$

Alternately, using the relations $(a+c) \vee (b+c) = a \vee b + c$, $(a+c) \wedge (b+c) = a \wedge b + c$, $(-a) \wedge (-b) = -(a \vee b)$ and $a \vee b + a \wedge b = a + b$, we find that

$$\begin{aligned} &\left(\left(\frac{1}{2} - \frac{1}{4}|h+h'| - \frac{1}{4}(h'-h) \right) \wedge \left(1 - \frac{1}{S} \right) - \left(1 - \frac{1}{S} - \frac{1}{4}(h'-h) \right) \vee 0 \right)_+ \\ &= \left(\left(-\frac{1}{2} - \frac{1}{4}|h+h'| \right) \wedge \left(\frac{1}{4}(h'-h) - \frac{1}{S} \right) + 1 - \frac{1}{4}(h'-h) - \left(1 - \frac{1}{4}(h'-h) \right) \vee \frac{1}{S} + \frac{1}{S} \right)_+ \\ &= \left(\left(1 - \frac{1}{4}(h'-h) \right) \wedge \frac{1}{S} - \left(\frac{1}{2} + \frac{1}{4}|h+h'| \right) \vee \left(\frac{1}{S} - \frac{1}{4}(h'-h) \right) \right)_+ \end{aligned}$$

so that

$$\begin{aligned}
III_1 &= \frac{12}{\pi^2} \iint f(S, h) \left(\int_0^1 \mathbf{1}_{2A-1 < (h-h')/2 < A} \mathbf{1}_{h' < 1-2A} \mathbf{1}_{-1+2A < h} \right. \\
&\quad \left. \mathbf{1}_{1/(1-A) < S < 1/(1-A+(h-h')/4)} dA \right) \mathbf{1}_{-1 < h < h' < 1} \frac{dSdh}{|h-h'|} \\
&= \frac{12}{\pi^2} \iint f(S, h) \mathbf{1}_{-1 < h < h' < 1} \left((S - \frac{1}{4}S(h' - h)) \wedge 1 \right. \\
&\quad \left. - (1 - \frac{1}{4}S(h' - h)) \vee (\frac{S}{2} + \frac{1}{4}S|h + h'|) \right) \frac{dSdh}{+S|h-h'|}.
\end{aligned}$$

With the notation $\zeta = \frac{1}{2}|h + h'|$, we recast this last expression as

$$III_1 = \frac{6}{\pi^2} \iint f(S, h) \mathbf{1}_{-1 < h < h' < 1} \left((S - \frac{1}{2}S\eta) \wedge 1 - (1 - \frac{1}{2}S\eta) \vee (\frac{1}{2}S + \frac{1}{2}S\zeta) \right) \frac{dSdh}{S\eta}.$$

The computation of III_2 is fairly similar. Starting with the same substitution as for III_1 , we obtain

$$\begin{aligned}
III_2 &= \frac{12}{\pi^2} \int_0^1 \left(\iint f(S, h) \mathbf{1}_{2A-1 < (h-h')/2 < A} \mathbf{1}_{h' < 1-2A} \mathbf{1}_{-1+2A < h} \right. \\
&\quad \left. \mathbf{1}_{1/(1-A+(h-h')/4) < s < 1/(1-A)} \mathbf{1}_{-1 < h' < h < 1} \frac{dSdh}{|h-h'|} \right) dA \\
&= \frac{12}{\pi^2} \iint f(S, h) \left(\int_0^1 \mathbf{1}_{2A-1 < (h-h')/2 < A} \mathbf{1}_{h' < 1-2A} \mathbf{1}_{-1+2A < h} \right. \\
&\quad \left. \mathbf{1}_{1/(1-A+(h-h')/4) < S < 1/(1-A)} dA \right) \mathbf{1}_{-1 < h' < h < 1} \frac{dSdh}{|h-h'|}.
\end{aligned}$$

The inner integral is recast as

$$\begin{aligned}
&\int_0^1 \mathbf{1}_{2A-1 < (h-h')/2 < A} \mathbf{1}_{h' < 1-2A} \mathbf{1}_{-1+2A < h} \mathbf{1}_{1/(1-A+(h-h')/4) < S < 1/(1-A)} dA \\
&= \int_0^1 \mathbf{1}_{\frac{1}{2}(h-h') < A} \mathbf{1}_{A < \frac{1}{2} + \frac{1}{4}(h-h')} \mathbf{1}_{A < \frac{1}{2}(1-h')} \mathbf{1}_{A < \frac{1}{2}(1+h)} \mathbf{1}_{1-\frac{1}{S} < A < 1-\frac{1}{S} + \frac{1}{4}(h-h')} dA \\
&= \int_0^1 \mathbf{1}_{\frac{1}{2}(h-h') < A} \mathbf{1}_{A < \frac{1}{2} - \frac{1}{4}|h+h'| + \frac{1}{4}(h-h')} \mathbf{1}_{1-\frac{1}{S} < A < 1-\frac{1}{S} + \frac{1}{4}(h-h')} dA \\
&= ((\frac{1}{2} - \frac{1}{4}|h+h'| + \frac{1}{4}(h-h')) \wedge (1 - \frac{1}{S} + \frac{1}{4}(h-h')) - (1 - \frac{1}{S}) \vee \frac{1}{2}(h-h'))_+.
\end{aligned}$$

As in the case of III_1 , we have

$$\begin{aligned}
&((\frac{1}{2} - \frac{1}{4}|h+h'| + \frac{1}{4}(h-h')) \wedge (1 - \frac{1}{S} + \frac{1}{4}(h-h')) - (1 - \frac{1}{S}) \vee \frac{1}{2}(h-h'))_+ \\
&= (1 + \frac{1}{4}(h-h') + (-\frac{1}{2} - \frac{1}{4}|h+h'|) \wedge (-\frac{1}{S}) - (1 - \frac{1}{S}) \vee \frac{1}{2}(h-h'))_+ \\
&= (1 + \frac{1}{4}(h-h') - (\frac{1}{2} + \frac{1}{4}|h+h'|) \vee \frac{1}{S} \\
&\quad - (1 - \frac{1}{S}) - \frac{1}{2}(h-h') + (1 - \frac{1}{S}) \wedge \frac{1}{2}(h-h'))_+ \\
&= (\frac{1}{S} - \frac{1}{4}(h-h') - (\frac{1}{2} + \frac{1}{4}|h+h'|) \vee (\frac{1}{S}) + (1 - \frac{1}{S}) \wedge \frac{1}{2}(h-h'))_+ \\
&= ((1 - \frac{1}{4}(h-h')) \wedge (\frac{1}{S} + \frac{1}{4}(h-h')) - (\frac{1}{2} + \frac{1}{4}|h+h'|) \vee (\frac{1}{S}))_+
\end{aligned}$$

so that

$$\begin{aligned} III_2 &= \frac{12}{\pi^2} \int_0^1 \left(\iint f(S, h) \mathbf{1}_{2A-1 < (h-h')/2 < A} \mathbf{1}_{h' < 1-2A} \mathbf{1}_{-1+2A < h} \right. \\ &\quad \left. \mathbf{1}_{1/(1-A+(h-h')/4) < S < 1/(1-A)} \mathbf{1}_{-1 < h' < h < 1} \frac{dSdh}{|h-h'|} \right) dA \\ &= \frac{12}{\pi^2} \iint f(S, h) \mathbf{1}_{-1 < h' < h < 1} \left((S - \frac{1}{4}S(h-h')) \wedge (1 + \frac{1}{4}S(h-h')) \right. \\ &\quad \left. - (\frac{1}{2}S + \frac{1}{4}S|h+h'|) \vee 1 \right)_+ \frac{dSdh}{S|h-h'|} \end{aligned}$$

In other words

$$III_2 = \frac{6}{\pi^2} \iint f(S, h) \mathbf{1}_{-1 < h < h' < 1} \left((S - \frac{1}{2}S\eta) \wedge (1 + \frac{1}{2}S\eta) - (\frac{1}{2}S + \frac{1}{2}S\zeta) \vee 1 \right)_+ \frac{dSdh}{S\eta}.$$

Summing up the contributions I , II , III_1 and III_2 , we find that

$$\begin{aligned} P_+(S, h|h') &= \frac{6}{\pi^2 S\eta} \mathbf{1}_{-1 < h < h' < 1} \mathbf{1}_{0 < S < 1} (S\eta) \wedge (1 - S) \\ &\quad + \frac{6}{\pi^2 S\eta} \mathbf{1}_{-1 < h' < h < 1} \mathbf{1}_{S > 0} (S\eta - |1 - S|)_+ \\ &\quad + \frac{6}{\pi^2 S\eta} \mathbf{1}_{-1 < h < h' < 1} \mathbf{1}_{S > 0} \left((S - \frac{1}{2}S\eta) \wedge 1 - (1 - \frac{1}{2}S\eta) \vee (\frac{1}{2}S + \frac{1}{2}S\zeta) \right)_+ \\ &\quad + \frac{6}{\pi^2 S\eta} \mathbf{1}_{-1 < h' < h < 1} \mathbf{1}_{S > 0} \left((S - \frac{1}{2}S\eta) \wedge (1 + \frac{1}{2}S\eta) - (\frac{1}{2}S + \frac{1}{2}S\zeta) \vee 1 \right)_+. \end{aligned}$$

Observe that

$$\mathbf{1}_{S > 0} (S\eta - |1 - S|)_+ = \mathbf{1}_{\frac{1}{1+\eta} < S < \frac{1}{1-\eta}} (S\eta - |1 - S|).$$

On the other hand, if

$$(S - \frac{1}{2}S\eta) \wedge 1 - (1 - \frac{1}{2}S\eta) \vee (\frac{1}{2}S + \frac{1}{2}S\zeta) \geq 0$$

then $(S - \frac{1}{2}S\eta) - (1 - \frac{1}{2}S\eta) \geq 0$ so that $S \geq 1$; likewise $1 - (\frac{1}{2}S + \frac{1}{2}S\zeta) \geq 0$ so that $S \leq 2$. Hence

$$\begin{aligned} &\mathbf{1}_{S > 0} \left((S - \frac{1}{2}S\eta) \wedge 1 - (1 - \frac{1}{2}S\eta) \vee (\frac{1}{2}S + \frac{1}{2}S\zeta) \right)_+ \\ &= \mathbf{1}_{1 < S < 2} \left((S - \frac{1}{2}S\eta) \wedge 1 - (1 - \frac{1}{2}S\eta) \vee (\frac{1}{2}S + \frac{1}{2}S\zeta) \right)_+. \end{aligned}$$

By the same token

$$(S - \frac{1}{2}S\eta) \wedge (1 + \frac{1}{2}S\eta) - (\frac{1}{2}S + \frac{1}{2}S\zeta) \vee 1 \geq 0$$

implies that $(S - \frac{1}{2}S\eta) - 1 \geq 0$, so that $S \geq 1$, and hence

$$\begin{aligned} &\mathbf{1}_{S > 0} \left((S - \frac{1}{2}S\eta) \wedge (1 + \frac{1}{2}S\eta) - (\frac{1}{2}S + \frac{1}{2}S\zeta) \vee 1 \right)_+ \\ &= \mathbf{1}_{S > 1} \left((S - \frac{1}{2}S\eta) \wedge (1 + \frac{1}{2}S\eta) - (\frac{1}{2}S + \frac{1}{2}S\zeta) \vee 1 \right)_+. \end{aligned}$$

Finally

$$\begin{aligned} P_+(S, h|h') &= \frac{6}{\pi^2 S\eta} \mathbf{1}_{-1 < h < h' < 1} \mathbf{1}_{0 < S < 1} (S\eta) \wedge (1 - S) \\ &\quad + \frac{6}{\pi^2 S\eta} \mathbf{1}_{-1 < h' < h < 1} \mathbf{1}_{\frac{1}{1+\eta} < S < \frac{1}{1-\eta}} (S\eta - |1 - S|) \\ &\quad + \frac{6}{\pi^2 S\eta} \mathbf{1}_{-1 < h < h' < 1} \mathbf{1}_{1 < S < 2} \left((S - \frac{1}{2}S\eta) \wedge 1 - (1 - \frac{1}{2}S\eta) \vee (\frac{1}{2}S + \frac{1}{2}S\zeta) \right)_+ \\ &\quad + \frac{6}{\pi^2 S\eta} \mathbf{1}_{-1 < h' < h < 1} \mathbf{1}_{S > 1} \left((S - \frac{1}{2}S\eta) \wedge (1 + \frac{1}{2}S\eta) - (\frac{1}{2}S + \frac{1}{2}S\zeta) \vee 1 \right)_+. \end{aligned}$$

By formula 2.24,

$$\mathbf{T}_{A,B,Q,-}(-h') = (L, -h) \iff \mathbf{T}_{A,B,Q,+}(h') = (L, h)$$

so that

$$P(S, h|h') = \frac{1}{2} (P_+(S, h|h') + P_+(S, -h|-h')),$$

thereby leading to formula (2.11).

6.2. Proof of the simplified formula (2.13). Assume that $h > |h'|$ so that

$$\begin{cases} \eta = \frac{1}{2}(h - h') \\ \zeta = \frac{1}{2}(h + h') \end{cases} \implies \begin{cases} h = (\zeta + \eta) \\ h' = (\zeta - \eta) \end{cases}$$

and denote

$$L = S - \frac{1}{2}S\eta, \quad M = \frac{1}{2}S + \frac{1}{2}S\zeta, \quad N = \frac{1}{2}S\eta.$$

Whenever $S \geq 1$, the reader will easily check that (2.12) can be written as

$$\frac{2\pi^2}{3}NP(S, h|h') = (1 + N - L)_+ + (L \wedge (1 + N) - M \vee 1)_+ + (L \wedge 1 - M \vee (1 - N))_+.$$

Since $L \geq M$, the expression above can be reduced after checking the three cases $L \leq 1$, $1 < L < 1 + N$ and $L \geq 1 + N$. One finds that

$$(1 + N - L)_+ + (L \wedge (1 + N) - M \vee 1)_+ = (1 + N - M \vee (L \wedge 1))_+.$$

Then

$$\begin{aligned} \frac{2\pi^2}{3}NP(S, h|h') &= (1 + N - L)_+ + (L \wedge (1 + N) - M \vee 1)_+ \\ &\quad + (L \wedge 1 - M \vee (1 - N))_+ \\ &= (1 + N - M \vee (L \wedge 1))_+ + (L \wedge 1 - M \vee (1 - N))_+ \\ &= \begin{cases} 0 & \text{if } M \geq 1 + N, \\ 1 + N - M & \text{if } 1 - N < M < 1 + N, \\ 2N & \text{if } M \leq 1 - N. \end{cases} \end{aligned}$$

Since

$$\begin{cases} M + N = \frac{1}{2}S(1 + h) \\ M - N = \frac{1}{2}S(1 + h') \end{cases}$$

the formulas above can be recast as

$$\frac{2\pi^2}{3}NP(S, h|h') = \begin{cases} 0 & \text{if } \frac{1}{2}S(1 + h') \geq 1, \\ 1 - \frac{1}{2}S(1 + h') & \text{if } \frac{1}{2}S(1 + h') < 1 < \frac{1}{2}S(1 + h), \\ \frac{1}{2}S(h - h') & \text{if } 1 \leq \frac{1}{2}S(1 + h), \end{cases}$$

which holds whenever $S \geq 1$.

On the other hand, if $S < 1$, the last two terms on the right hand side of (2.12) vanish identically so that

$$\frac{2\pi^2}{3}NP(S, h|h') = (2N) \wedge (1 - S) + (2N - (1 - S))_+ = 2N = \frac{1}{2}S(h - h').$$

Putting together these last two formulas leads to (2.13).

6.3. Proof of Corollary 2.2. As for the statements in Corollary 2.2, observe that the symmetries (2.14) and the fact that P is piecewise continuous on $\mathbf{R}_+ \times [-1, 1] \times [1, 1]$ follow from (2.12). The first identity in (2.15) follows from the fact that, by definition, $(s, h) \mapsto P(s, h|h')$ is a probability density, while the second identity there follows from the first and the symmetry $P(s, h|h') = P(s, h'|h)$.

If $S \geq 4$ and $h, h' \in]-1, 1[$ satisfy $|h'| \leq h$, the simplified formula (2.13) implies that

$$P(S, h|h') \leq \frac{6}{\pi^2 S(h-h')} \mathbf{1}_{1+h' < \frac{2}{S}}.$$

On the other hand, $1+h' < \frac{2}{S}$ and $S \geq 4$ imply that $h' < -\frac{1}{2}$, so that $h \geq |h'| > \frac{1}{2}$; therefore $h-h' > 1$ and the inequality above entails (2.16).

Starting from (2.16), observe that, because of the symmetries (2.14),

$$\begin{aligned} \int_{-1}^1 \int_{-1}^1 P(s, h|h') dh dh' &= 4 \iint_{0 \leq |h'| < h \leq 1} P(s, h|h') dh dh' \\ &\leq \frac{24}{\pi^2 S} \iint_{0 \leq |h'| < h \leq 1} \mathbf{1}_{1+h' < \frac{2}{S}} dh dh' = \frac{48}{\pi^2 S^3}, \end{aligned}$$

which is (2.17).

7. PROOF OF THEOREM 3.1

The existence of the integral defining E follows from the positivity of $P(s, h|h')$ and the second identity in (2.15).

That $E(0, h) = 1$ for $|h| \leq 1$ follows from the formula defining E and the second identity in (2.15): this establishes the first part of statement 1).

The definition of E and first formula in statement 1) shows that

$$-\partial_s E(s, h) = \int_{-1}^1 2P(2s, h|h') dh' = \int_{-1}^1 2P(2s, h|h') E(0, h') dh', \quad s > 0, |h| \leq 1.$$

Using again the positivity of $P(s, h|h')$ and the second identity in (2.15) shows that, for each $h \in [-1, 1]$, the function $(s, h') \mapsto P(s, h|h')$ belongs to $L^1(\mathbf{R}_+ \times [-1, 1])$. Therefore $E(s, h) \rightarrow 0$ for each $h \in [-1, 1]$ as $s \rightarrow +\infty$. Thus each function $F \equiv F(s, h)$ of the form $F(s, h) = CE(s, h)$ satisfies both conditions in statement 2).

Conversely, let $F \equiv F(s, h)$ satisfy the conditions in statement 2), and let $\Phi(h) := F(0, h)$ for a.e. $h \in [-1, 1]$. Integrating both sides of the differential equation satisfied by F in $s \in \mathbf{R}_+$ yields

$$(7.1) \quad \Phi(h) = \int_{-1}^1 \Pi(h|h') \Phi(h') dh'$$

since $F(s, h)$ vanishes as $s \rightarrow +\infty$, with

$$\Pi(h|h') = \int_0^\infty P(S, h|h') dS.$$

Multiplying each side of the identity (7.1) by $\Phi(h)$, and integrating in $h \in [-1, 1]$, we see that

$$(7.2) \quad \int_{-1}^1 \Phi(h)^2 dh = \int_{-1}^1 \int_{-1}^1 \Pi(h|h') \Phi(h) \Phi(h') dh dh'.$$

Observe that, by (2.14)

$$\Pi(h'|h) = \Pi(h|h'), \quad \text{for a.e. } h, h' \in [-1, 1],$$

and

$$\int_{-1}^1 \Pi(h|h') dh' = \int_{-1}^1 \Pi(h'|h) dh' = 1, \quad \text{for a.e. } h \in [-1, 1],$$

in view of (2.15).

Therefore

$$\int_{-1}^1 \Phi(h)^2 dh = \int_{-1}^1 \left(\int_{-1}^1 \Pi(h|h') dh' \right) \Phi(h)^2 dh = \int_{-1}^1 \left(\int_{-1}^1 \Pi(h|h') dh \right) \Phi(h')^2 dh,$$

so that (7.2) becomes

$$\begin{aligned} 0 &= \int_{-1}^1 \Phi(h)^2 dh - \int_{-1}^1 \int_{-1}^1 \Pi(h|h') \Phi(h) \Phi(h') dh dh' \\ &= \int_{-1}^1 \int_{-1}^1 \Pi(h|h') \frac{1}{2} (\Phi(h)^2 + \Phi(h')^2) dh dh' - \int_{-1}^1 \int_{-1}^1 \Pi(h|h') \Phi(h) \Phi(h') dh dh' \\ &= \int_{-1}^1 \int_{-1}^1 \Pi(h|h') \frac{1}{2} (\Phi(h) - \Phi(h'))^2 dh. \end{aligned}$$

Since $\Pi(h|h') > 0$ a.e. in $h, h' \in [-1, 1]$ as can be seen from the explicit formula (2.18), this last equality implies that

$$\Phi(h) = C \quad \text{a.e. in } h \in [-1, 1],$$

for some nonnegative constant C . Therefore

$$-\partial_s F(s, h) = C \int_{-1}^1 2P(2s, h|h') dh', \quad \text{and } \lim_{s \rightarrow +\infty} F(s, h) = 0 \quad \text{a.e. in } h \in [-1, 1],$$

so that

$$F(s, h) = C \int_{2s}^{\infty} \int_{-1}^1 P(\tau, h|h') dh' d\tau = CE(s, h),$$

which proves the uniqueness part of statement 2).

Now for statement 3); by definition of $P(s, h|h')$, for each $t > 0$

$$\begin{aligned} \int_{-1}^1 E(s, h) dh &= \int_{2s}^{\infty} \int_{-1}^1 \int_{-1}^1 P(t, h|h') dt dh dh' \\ &= \lim_{\epsilon \rightarrow 0^+} \frac{1}{|\ln \epsilon|} \int_{\epsilon}^{1/4} \int_{-1}^1 \mathbf{1}_{[2s, +\infty) \times [-1, 1]}(T_r(h', \omega)) dh' \frac{dr}{r} \\ &= \lim_{\epsilon \rightarrow 0^+} \frac{1}{|\ln \epsilon|} \int_{\epsilon}^{1/4} \int_{-1}^1 \mathbf{1}_{[2s, +\infty)}(2r\tau_r(Y_r(h', \omega))) dh' \frac{dr}{r} \\ &= 2 \lim_{\epsilon \rightarrow 0^+} \frac{1}{|\ln \epsilon|} \int_{\epsilon}^{1/4} \nu_r(\{(x, \omega) \in \Gamma_r^+ / \mathbf{Z}^2 \mid 2r\tau_r(x, \omega) \geq 2s\}) \frac{dr}{r} \end{aligned}$$

where ν_r is the probability measure on $\Gamma_r^+ / \mathbf{Z}^2$ that is proportional to $\omega \cdot n_x dx d\omega$. Using formula (1.3) in [2], which is a straightforward consequence of variant of Santaló's formula established in Lemma 3 of [9], we conclude that

$$\int_{-1}^1 E(s, h) dh = -2p'(2s), \quad s \geq 0,$$

which is the first formula in statement 3). The second formula there is a consequence of the expression of $p''(s)$ as a power series in $1/s$ given in formula (1.5) of [2].

Finally, we establish the second formula in statement 1). Indeed

$$\int_0^{\infty} \int_{-1}^1 E(s, h) dh ds = \int_0^{\infty} -2p'(2s) ds = p(0) = 1,$$

while the first equality in that formula follows from the identity defining E and Fubini's theorem.

8. PROOF OF THEOREM 3.3

If F is a solution of (2.30), we set $f = F/E$, so that, observing that $E(0, h') = 1$ for $h' \in [-1, 1]$,

$$\begin{aligned} E(s, h)(\partial_t + \omega \cdot \nabla_x - \partial_s)f(t, x, \omega, s, h) - f(t, x, \omega, s, h)\partial_s E(s, h) \\ = \int_{-1}^1 2P(2s, h|h')f(t, x, R[\theta(h')], 0, h')dh', \end{aligned}$$

Since

$$\partial_s E(s, h) = - \int_{-1}^1 2P(2s, h|h')dh',$$

the equation above can be put in the form

$$\begin{aligned} E(s, h)(\partial_t + \omega \cdot \nabla_x - \partial_s)f(t, x, \omega, s, h) \\ = \int_{-1}^1 2P(2s, h|h')(f(t, x, R[\theta(h')], 0, h') - f(t, x, \omega, s, h))dh'. \end{aligned}$$

Next we multiply both sides of the equation above by $\mathbf{h}'(f) - \mathbf{h}'(1)$: the left hand side becomes

$$\begin{aligned} & \mathbf{h}'(f(t, x, \omega, s, h) - \mathbf{h}'(1))E(s, h)(\partial_t + \omega \cdot \nabla_x - \partial_s)f(t, x, \omega, s, h) \\ &= (\partial_t + \omega \cdot \nabla_x - \partial_s)(E(s, h)(\mathbf{h}(f(t, x, \omega, s, h)) - \mathbf{h}(1) - \mathbf{h}'(1)(f(t, x, \omega, s, h) - 1))) \\ & \quad + \partial_s E(s, h)(\mathbf{h}(f(t, x, \omega, s, h)) - \mathbf{h}(1) - \mathbf{h}'(1)(f(t, x, \omega, s, h) - 1)) \\ &= (\partial_t + \omega \cdot \nabla_x - \partial_s)(E(s, h)(\mathbf{h}(f(t, x, \omega, s, h)) - \mathbf{h}(1) - \mathbf{h}'(1)(f(t, x, \omega, s, h) - 1))) \\ & \quad - \int_{-1}^1 2P(2s, h|h')(\mathbf{h}(f(t, x, \omega, s, h)) - \mathbf{h}(1) - \mathbf{h}'(1)(f(t, x, \omega, s, h) - 1))dh'. \end{aligned}$$

Integrating in (ω, s, h) transforms this expression into

$$\begin{aligned} & \partial_t \int_{\mathbf{S}^1} \int_0^\infty \int_{-1}^1 (\mathbf{h}(f) - \mathbf{h}(1) - \mathbf{h}'(1)(f - 1))(t, x, \omega, s, h)E(s, h)dhd s d\omega \\ & + \operatorname{div}_x \int_{\mathbf{S}^1} \int_0^\infty \int_{-1}^1 \omega(\mathbf{h}(f) - \mathbf{h}(1) - \mathbf{h}'(1)(f - 1))(t, x, \omega, s, h)E(s, h)dhd s d\omega \\ & + \int_{\mathbf{S}^1} \int_{-1}^1 (\mathbf{h}(f) - \mathbf{h}(1) - \mathbf{h}'(1)(f - 1))(t, x, \omega, 0, h)dhd\omega \\ & - \int_{\mathbf{S}^1} \int_0^\infty \int_{-1}^1 \int_{-1}^1 2P(2s, h|h')(\mathbf{h}(f) - \mathbf{h}(1) - \mathbf{h}'(1)(f - 1))(t, x, \omega, s, h)dh'dhd s d\omega. \end{aligned}$$

Using the relation (2.15) simplifies this term into

$$\begin{aligned} & \partial_t \int_{\mathbf{S}^1} \int_0^\infty \int_{-1}^1 (\mathbf{h}(f) - \mathbf{h}(1) - \mathbf{h}'(1)(f - 1))(t, x, \omega, s, h)E(s, h)dhd s d\omega \\ & + \operatorname{div}_x \int_{\mathbf{S}^1} \int_0^\infty \int_{-1}^1 \omega(\mathbf{h}(f) - \mathbf{h}(1) - \mathbf{h}'(1)(f - 1))(t, x, \omega, s, h)E(s, h)dhd s d\omega \\ & + \int_{\mathbf{S}^1} \int_{-1}^1 (\mathbf{h}(f) - \mathbf{h}'(1)f)(t, x, \omega, 0, h')dh'd\omega \\ & - \int_{\mathbf{S}^1} \int_0^\infty \int_{-1}^1 \int_{-1}^1 2P(2s, h|h')(\mathbf{h}(f) - \mathbf{h}'(1)f)(t, x, \omega, s, h)dh'dhd s d\omega. \end{aligned}$$

On the other hand, multiplying the right hand side by $\mathbf{h}'(f(t, x, \omega, s, h)) - \mathbf{h}'(1)$ and integrating in (ω, s, h) leads to

$$\begin{aligned}
& \int_{\mathbf{S}^1} \int_0^\infty \int_{-1}^1 \int_{-1}^1 2P(2s, h|h')(f(t, x, R[\theta(h')]\omega, 0, h') - f(t, x, \omega, s, h)) \\
& \quad \times (\mathbf{h}'(f(t, x, \omega, s, h)) - \mathbf{h}'(1)) dh' dh ds d\omega \\
&= \int_{\mathbf{S}^1} \int_0^\infty \int_{-1}^1 \int_{-1}^1 2P(2s, h|h')(f(t, x, R[\theta(h')]\omega, 0, h') - f(t, x, \omega, s, h)) \\
& \quad \times \mathbf{h}'(f(t, x, \omega, s, h)) dh' dh ds d\omega \\
&+ \mathbf{h}'(1) \int_{\mathbf{S}^1} \int_0^\infty \int_{-1}^1 \int_{-1}^1 2P(2s, h|h') f(t, x, \omega, s, h) dh' dh ds d\omega \\
& \quad - \mathbf{h}'(1) \int_{\mathbf{S}^1} \int_{-1}^1 f(t, x, \omega, 0, h') dh' d\omega.
\end{aligned}$$

after substituting ω for $R[\theta(h')]\omega$ in the last integral above.

Putting together the left- and right-hand sides, we arrive at the equality

$$\begin{aligned}
& \partial_t \int_{\mathbf{S}^1} \int_0^\infty \int_{-1}^1 (\mathbf{h}(f) - \mathbf{h}(1) - \mathbf{h}'(1)(f - 1))(t, x, \omega, s, h) E(s, h) dh ds d\omega \\
&+ \operatorname{div}_x \int_{\mathbf{S}^1} \int_0^\infty \int_{-1}^1 \omega (\mathbf{h}(f) - \mathbf{h}(1) - \mathbf{h}'(1)(f - 1))(t, x, \omega, s, h) E(s, h) dh ds d\omega \\
&+ \int_{\mathbf{S}^1} \int_{-1}^1 (\mathbf{h}(f) - \mathbf{h}'(1)f)(t, x, \omega, 0, h') dh' d\omega \\
&- \int_{\mathbf{S}^1} \int_0^\infty \int_{-1}^1 \int_{-1}^1 2P(2s, h|h') (\mathbf{h}(f) - \mathbf{h}'(1)f)(t, x, \omega, s, h) dh' dh ds d\omega \\
&= \int_{\mathbf{S}^1} \int_0^\infty \int_{-1}^1 \int_{-1}^1 2P(2s, h|h')(f(t, x, R[\theta(h')]\omega, 0, h') - f(t, x, \omega, s, h)) \\
& \quad \times \mathbf{h}'(f(t, x, \omega, s, h)) dh' dh ds d\omega \\
&+ \mathbf{h}'(1) \int_{\mathbf{S}^1} \int_0^\infty \int_{-1}^1 \int_{-1}^1 2P(2s, h|h') f(t, x, \omega, s, h) dh' dh ds d\omega \\
& \quad - \mathbf{h}'(1) \int_{\mathbf{S}^1} \int_{-1}^1 f(t, x, \omega, 0, h') dh' d\omega.
\end{aligned}$$

All the terms with a factor $\mathbf{h}'(1)$ in the integral part of the equality above compensate, so that the equality above reduces to

$$\begin{aligned}
& \partial_t \int_{\mathbf{S}^1} \int_0^\infty \int_{-1}^1 (\mathbf{h}(f) - \mathbf{h}(1) - \mathbf{h}'(1)(f - 1))(t, x, \omega, s, h) E(s, h) dh ds d\omega \\
&+ \operatorname{div}_x \int_{\mathbf{S}^1} \int_0^\infty \int_{-1}^1 \omega (\mathbf{h}(f) - \mathbf{h}(1) - \mathbf{h}'(1)(f - 1))(t, x, \omega, s, h) E(s, h) dh ds d\omega \\
&+ \int_{\mathbf{S}^1} \int_{-1}^1 \mathbf{h}(f)(t, x, \omega, 0, h') dh' d\omega \\
&- \int_{\mathbf{S}^1} \int_0^\infty \int_{-1}^1 \int_{-1}^1 2P(2s, h|h') \mathbf{h}(f)(t, x, \omega, s, h) dh' dh ds d\omega \\
&- \int_{\mathbf{S}^1} \int_0^\infty \int_{-1}^1 \int_{-1}^1 2P(2s, h|h')(f(t, x, R[\theta(h')]\omega, 0, h') - f(t, x, \omega, s, h)) \\
& \quad \times \mathbf{h}'(f(t, x, \omega, s, h)) dh' dh ds d\omega = 0.
\end{aligned}$$

Using again the relation (2.15) and the substitution $\omega \mapsto R[\theta(h')]\omega$, one has

$$\begin{aligned} & \int_{\mathbf{S}^1} \int_{-1}^1 \mathbf{h}(f)(t, x, \omega, 0, h') dh' d\omega \\ &= \int_{\mathbf{S}^1} \int_0^\infty \int_{-1}^1 \int_{-1}^1 2P(2s, h|h') \mathbf{h}(f)(t, x, \omega, 0, h') dh' dh ds d\omega \\ &= \int_{\mathbf{S}^1} \int_0^\infty \int_{-1}^1 \int_{-1}^1 2P(2s, h|h') \mathbf{h}(f)(t, x, R[\theta(h')]\omega, 0, h') dh' dh ds d\omega \end{aligned}$$

so that the previous identity can be put in the form

$$\begin{aligned} & \partial_t \int_{\mathbf{S}^1} \int_0^\infty \int_{-1}^1 (\mathbf{h}(f) - \mathbf{h}(1) - \mathbf{h}'(1)(f-1))(t, x, \omega, s, h) E(s, h) dh ds d\omega \\ &+ \operatorname{div}_x \int_{\mathbf{S}^1} \int_0^\infty \int_{-1}^1 \omega (\mathbf{h}(f) - \mathbf{h}(1) - \mathbf{h}'(1)(f-1))(t, x, \omega, s, h) E(s, h) dh ds d\omega \\ &+ \int_{\mathbf{S}^1} \int_0^\infty \int_{-1}^1 \int_{-1}^1 2P(2s, h|h') (\mathbf{h}(f)(t, x, R[\theta(h')]\omega, 0, h') - \mathbf{h}(f)(t, x, \omega, s, h) \\ &\quad - (f(t, x, R[\theta(h')]\omega, 0, h') - f(t, x, \omega, s, h)) \mathbf{h}'(f(t, x, \omega, s, h)) dh' dh ds d\omega = 0. \end{aligned}$$

Integrating both sides of this identity in $x \in \mathbf{T}^2$, we finally obtain

$$\frac{d}{dt} H_{\mathbf{h}}(fE|E) + \int_{\mathbf{T}^2} D_{\mathbf{h}}(f)(t, x) dx = 0,$$

with $H_{\mathbf{h}}(F|E)$ and $D_{\mathbf{h}}(f)$ defined as in the statement of Theorem 3.3.

9. PROOF OF THEOREM 3.2

Inserting $F(t, x, \omega, s, h) = f(t, x, \omega)E(s, h)$ in (2.30), one finds that

$$\begin{aligned} & E(s, h)(\partial_t + \omega \cdot \nabla_x) f(t, x, \omega) - f(t, x, \omega) \partial_s E(s, h) \\ &= \int_{-1}^1 2P(2s, h|h') f(t, x, R[\theta(h')]\omega) dh' \end{aligned}$$

so that

$$\begin{aligned} & E(s, h)(\partial_t + \omega \cdot \nabla_x) f(t, x, \omega) \\ &= \int_{-1}^1 2P(2s, h|h') (f(t, x, R[\theta(h')]\omega) - f(t, x, \omega)) dh' \end{aligned}$$

since

$$-\partial_s E(s, h) = \int_{-1}^1 2P(2s, h|h') dh', \quad s > 0, \quad |h| \leq 1$$

— see Theorem 3.1.

Integrating in $h \in [-1, 1]$ both sides of the penultimate equality, we obtain

$$\begin{aligned} & \int_{-1}^1 E(s, h) dh (\partial_t + \omega \cdot \nabla_x) f(t, x, \omega) \\ &= \int_{-1}^1 \int_{-1}^1 2P(2s, h|h') (f(t, x, R[\theta(h')]\omega) - f(t, x, \omega)) dh'. \end{aligned}$$

Since

$$\int_{-1}^1 E(s, h) dh \sim \frac{1}{\pi^2 s^2} \quad \text{as } s \rightarrow +\infty$$

by Theorem 3.1, while

$$\int_{-1}^1 \int_{-1}^1 P(S, h|h') dh dh' \leq \frac{C'}{(1+S)^3}$$

by (2.17), one has

$$\begin{aligned} \int_{-1}^1 E(s, h) dh (\partial_t + \omega \cdot \nabla_x) f(t, x, \omega) &\sim \frac{1}{\pi^2 s^2} (\partial_t + \omega \cdot \nabla_x) f(t, x, \omega), \quad \text{and} \\ \left| \int_{-1}^1 \int_{-1}^1 2P(2s, h|h') (f(t, x, R[\theta(h')]\omega) - f(t, x, \omega)) dh' dh \right| \\ &\leq \frac{4C'}{(1+2s)^3} \|f(t, \cdot, \cdot)\|_{L^\infty(\mathbf{T}^2 \times \mathbf{S}^1)}. \end{aligned}$$

Hence

$$\begin{cases} (\partial_t + \omega \cdot \nabla_x) f(t, x, \omega) = 0, \quad \text{and} \\ \int_{-1}^1 \partial_s E(s, h') (f(t, x, R[\theta(h')]\omega) - f(t, x, \omega)) dh' = 0 \end{cases}$$

Integrating the second equality in $s > 0$, and observing that $E|_{s=0} = 1$ while $E(s, h) \rightarrow 0$ uniformly in $h \in [-1, 1]$ as $s \rightarrow +\infty$, we see that

$$\begin{aligned} &\int_0^\infty \left(\int_{-1}^1 \partial_s E(s, h') (f(t, x, R[\theta(h')]\omega) - f(t, x, \omega)) dh' \right) ds \\ &= \int_{-1}^1 \left(\int_0^\infty \partial_s E(s, h') ds \right) (f(t, x, R[\theta(h')]\omega) - f(t, x, \omega)) ds \\ &= \int_{-1}^1 (f(t, x, R[\theta(h')]\omega) - f(t, x, \omega)) dh' = 0 \end{aligned}$$

or, in other words

$$f(t, x, \omega) = \frac{1}{2} \int_{-1}^1 f(t, x, R[\theta(h')]\omega) dh' =: \phi(t, x).$$

On the other hand, the first equation implies that

$$(\partial_t + \omega \cdot \nabla_x) \phi(t, x) = 0$$

so that

$$\partial_t \phi = \partial_{x_j} \phi = 0, \quad j = 1, 2.$$

Hence ϕ is a constant, which implies in turn that $f(t, x, \omega) = \frac{F(t, x, \omega, s, h)}{E(s, h)}$ is a constant.

10. PROOF OF THEOREM 3.4

Let $f^{in} \in L^\infty(\mathbf{T}^2 \times \mathbf{S}^1)$ be such that $f^{in}(x, \omega) \geq 0$ a.e. in $(x, \omega) \in \mathbf{T}^2 \times \mathbf{S}^1$, and let F be the solution of the Cauchy problem (2.30). Define $F_0(t, x, \omega, s, h) = f^{in}(x, \omega) E(s, h)$ and set $K_j F_0 = F_j$ for $j \in \mathbf{N}$, where we recall that $(K_t)_{t \geq 0}$ is the evolution semigroup associated to the Cauchy problem (2.30).

Step 1:

Assume first that $\nabla_x^m f^{in} \in L^\infty(\mathbf{T}^2 \times \mathbf{S}^1)$ for all $m \geq 0$, so that F solves (2.30) in the classical sense. Then, with $\mathbf{h}(z) = \frac{1}{2} z^2$, one has

$$H(F_{n+1}|E) + \sum_{j=0}^n (H(F_j|E) - H(F_{j+1}|E)) = H(F_0|E)$$

for each $n \geq 0$, and since

$$H(F_j|E) - H(F_{j+1}|E) = H(F_j|E) - H(K_1 F_j|E) \geq 0$$

by Theorem 3.3, one has

$$H(F_j|E) - H(F_{j+1}|E) \rightarrow 0 \text{ as } j \rightarrow +\infty.$$

Now,

$$\begin{aligned} H(F_j|E) - H(F_{j+1}|E) &= \int_0^1 \int_{\mathbf{T}^2} D(K_t F_j/E) dx dt \\ &= \int_0^1 \int_{\mathbf{T}^2} \int_{\mathbf{S}^1} \int_0^\infty \iint_{[-1,1]^2} P(2s, h|h') \Phi_j(t, x, \omega, s, h, h')^2 dh dh' ds d\omega dx dt \end{aligned}$$

with the notation

$$\Phi_j(t, x, \omega, s, h, h') = \frac{K_t F_j(x, \omega, s, h)}{E(s, h)} - K_t F_j(x, R[\theta(h')]\omega, 0, h')$$

for a.e. $(t, x, \omega, s, h, h') \in [0, 1] \times \mathbf{T}^2 \times \mathbf{S}^1 \times \mathbf{R}_+ \times [-1, 1]^2$.

In view of properties 1) and 3) of the evolution semigroup $(K_t)_{t \geq 0}$ recalled in section 3, one has

$$0 \leq \frac{K_t F_j(x, \omega, s, h)}{E(s, h)} \leq \|f^{in}\|_{L^\infty(\mathbf{T}^2 \times \mathbf{S}^1)}$$

for a.e. $(x, \omega, s, h) \in \mathbf{T}^2 \times \mathbf{S}^1 \times \mathbf{R}_+ \times [-1, 1]$ and each $t \geq 0$, so that, up to extraction of a subsequence,

$$F_{j_k}/E \rightharpoonup F/E \text{ in } L^\infty(\mathbf{T}^2 \times \mathbf{S}^1 \times \mathbf{R}_+ \times [-1, 1]) \text{ weak-}^*$$

as $j_k \rightarrow +\infty$, by the Banach-Alaoglu theorem. Besides, the estimate (2.16) implies that

$$0 \leq (\partial_t + \omega \cdot \nabla_x - \partial_s) K_t F_{j_k} \leq \frac{4C}{1+2s} \|f^{in}\|_{L^\infty(\mathbf{T}^2 \times \mathbf{S}^1)}$$

so that, by the usual trace theorem for the advection operator $\partial_t + \omega \cdot \nabla_x - \partial_s$ (see for instance [8])

$$K_t F_{j_k}(x, R[\theta(h')]\omega, 0, h') \rightharpoonup K_t F(x, R[\theta(h')]\omega, 0, h')$$

in $L^\infty([0, 1] \times \mathbf{T}^2 \times \mathbf{S}^1 \times [-1, 1])$ weak-*. In particular

$$\Phi_{j_k} \rightharpoonup \Phi \text{ in } L^\infty([0, 1] \times \mathbf{T}^2 \times \mathbf{S}^1 \times \mathbf{R}_+ \times [-1, 1]^2) \text{ weak-}^*$$

with

$$\Phi(t, x, \omega, s, h, h') = \frac{K_t F(x, \omega, s, h)}{E(s, h)} - K_t F(x, R[\theta(h')]\omega, 0, h')$$

a.e. in $[0, 1] \times \mathbf{T}^2 \times \mathbf{S}^1 \times \mathbf{R}_+ \times [-1, 1]^2$. By convexity and weak limit

$$\begin{aligned} &\int_0^1 \int_{\mathbf{T}^2} \int_{\mathbf{S}^1} \int_0^\infty \int_{-1}^1 \int_{-1}^1 P(2s, h|h') \Phi(t, x, \omega, s, h, h')^2 dh' dh ds d\omega dx dt \\ &= \int_0^1 \int_{\mathbf{T}^2} D(K_t F/E) dx dt \leq \lim_{k \rightarrow \infty} \int_0^1 \int_{\mathbf{T}^2} D(K_t F_{j_k}/E) dx dt = 0, \end{aligned}$$

so that

$$\Phi(t, x, \omega, s, h, h') = \frac{K_t F(x, \omega, s, h)}{E(s, h)} - K_t F(x, R[\theta(h')]\omega, 0, h') = 0$$

a.e. on $[0, 1] \times \mathbf{T}^2 \times \mathbf{S}^1 \times \mathbf{R}_+ \times [-1, 1]^2$. Averaging both sides of this identity in $h' \in [-1, 1]$ shows that

$$\frac{K_t F(x, \omega, s, h)}{E(s, h)} = \frac{1}{2} \int_{-1}^1 K_t F(x, R[\theta(h')]\omega, 0, h') dh' =: f(t, x, \omega)$$

for a.e. $[0, \tau] \times \mathbf{T}^2 \times \mathbf{S}^1 \times \mathbf{R}_+ \times [-1, 1]$, i.e.

$$K_t F(x, \omega, s, h) = f(t, x, \omega) E(s, h).$$

By Theorem 3.2, one has $f(t, x, \omega) = C$ a.e. in $(t, x, \omega) \in [0, 1] \times \mathbf{T}^2 \times \mathbf{S}^1$ for some constant $C \geq 0$, so that

$$F(x, \omega, s, h) = CE(s, h) \text{ a.e. in } (x, \omega, s, h) \in \mathbf{T}^2 \times \mathbf{S}^1 \times \mathbf{R}_+ \times [-1, 1].$$

Let us identify the constant C . Property 4) of the semigroup $(K_t)_{t \geq 0}$ recalled in section 3 implies that

$$\begin{aligned} & \iint_{\mathbf{T}^2 \times \mathbf{S}^1} \int_0^\infty \int_{-1}^1 F_j(x, \omega, s, h) dh ds dx d\omega \\ &= \iint_{\mathbf{T}^2 \times \mathbf{S}^1} f^{in}(x, \omega) dx d\omega \int_0^\infty \int_{-1}^1 E(s, h) dh ds = \iint_{\mathbf{T}^2 \times \mathbf{S}^1} f^{in}(x, \omega) dx d\omega. \end{aligned}$$

Since $F_{j_k}/E \rightarrow F/E$ in $L^\infty(\mathbf{T}^2 \times \mathbf{S}^1 \times \mathbf{R}_+ \times [-1, 1])$ weak-* as $j_k \rightarrow +\infty$,

$$\begin{aligned} \iint_{\mathbf{T}^2 \times \mathbf{S}^1} f^{in}(x, \omega) dx d\omega &= \iint_{\mathbf{T}^2 \times \mathbf{S}^1} \int_0^\infty \int_{-1}^1 F(x, \omega, s, h) dh ds dx d\omega \\ &= \iint_{\mathbf{T}^2 \times \mathbf{S}^1} \int_0^\infty \int_{-1}^1 CE(s, h) dh ds dx d\omega = 2\pi C. \end{aligned}$$

Hence

$$F_{j_k}/E \rightarrow C = \frac{1}{2\pi} \iint_{\mathbf{T}^2 \times \mathbf{S}^1} f^{in}(x, \omega) dx d\omega$$

in $L^\infty(\mathbf{T}^2 \times \mathbf{S}^1 \times \mathbf{R}_+ \times [-1, 1])$ weak-*.

Since the sequence $(F_j/E)_{j \geq 0}$ is relatively compact in $L^\infty(\mathbf{T}^2 \times \mathbf{S}^1 \times \mathbf{R}_+ \times [-1, 1])$ weak-* and by the uniqueness of the limit point as $j \rightarrow +\infty$, we conclude that

$$F_j/E \rightarrow C = \frac{1}{2\pi} \iint_{\mathbf{T}^2 \times \mathbf{S}^1} f^{in}(x, \omega) dx d\omega$$

in $L^\infty(\mathbf{T}^2 \times \mathbf{S}^1 \times \mathbf{R}_+ \times [-1, 1])$ weak-* as $j \rightarrow +\infty$. Thus, we have proved that

$$K_j F_0 \rightarrow CE \text{ in } L^\infty(\mathbf{T}^2 \times \mathbf{S}^1 \times \mathbf{R}_+ \times [-1, 1]) \text{ weak-*}$$

where

$$\begin{aligned} C &= \frac{1}{2\pi} \iint_{\mathbf{T}^2 \times \mathbf{S}^1} f^{in}(x, \omega) dx d\omega \\ &= \frac{1}{2\pi} \iint_{\mathbf{T}^2 \times \mathbf{S}^1} \int_0^\infty \int_{-1}^1 F_0(x, \omega, s, h) dh ds dx d\omega, \end{aligned}$$

whenever $\nabla_x^m f^{in} \in L^\infty(\mathbf{T}^2 \times \mathbf{S}^1)$ for each $m \geq 0$, with $f^{in} \geq 0$ a.e. on $\mathbf{T}^2 \times \mathbf{S}^1$.

Step2:

The same holds true if $0 \leq f^{in} \in L^\infty(\mathbf{T}^2 \times \mathbf{S}^1)$ without assuming that $\nabla_x^m f^{in} \in L^\infty(\mathbf{T}^2 \times \mathbf{S}^1)$ for each $m \geq 1$, by regularizing the initial data in the x -variable.

Indeed, if $(\zeta_\epsilon)_{\epsilon > 0}$ is a regularizing sequence in \mathbf{T}^2 such that $\zeta_\epsilon(-z) = \zeta_\epsilon(z)$ for each $z \in \mathbf{T}^2$, one has

$$\begin{aligned} & \iint_{\mathbf{T}^2 \times \mathbf{S}^1} \int_0^\infty \int_{-1}^1 (K_t(\zeta_\epsilon \star_x F_0) - K_t F_0)(x, \omega, s, h) \phi(x, \omega, s, h) dh ds dx d\omega \\ &= \iint_{\mathbf{T}^2 \times \mathbf{S}^1} \int_0^\infty \int_{-1}^1 K_t(F_0)(x, \omega, s, h) (\zeta_\epsilon \star_x \phi - \phi)(x, \omega, s, h) dh ds dx d\omega \end{aligned}$$

because K_t commutes with translations in the variable x . Since

$$\|K_t F_0/E\|_{L^\infty(\mathbf{T}^2 \times \mathbf{S}^1 \times \mathbf{R}_+ \times [-1, 1])} = \|F_0/E\|_{L^\infty(\mathbf{T}^2 \times \mathbf{S}^1 \times \mathbf{R}_+ \times [-1, 1])}$$

for all $t \geq 0$, and

$$\zeta_\epsilon \star_x \phi - \phi \rightarrow 0 \text{ in } L^1(\mathbf{T}^2 \times \mathbf{S}^1 \times \mathbf{R}_+ \times [-1, 1]),$$

we conclude that

$$K_t(\zeta_\epsilon \star_x F_0) - K_t F_0 \rightarrow 0 \text{ in } L^\infty(\mathbf{T}^2 \times \mathbf{S}^1 \times \mathbf{R}_+ \times [-1, 1])$$

as $\epsilon \rightarrow 0^+$ uniformly in $t \geq 0$. Since we have established in Step 1 that

$$K_j(\zeta_\epsilon \star_x F_0) \rightarrow \frac{1}{2\pi} \iint_{\mathbf{T}^2 \times \mathbf{S}^1} f^{in}(x, \omega) dx d\omega$$

in $L^\infty(\mathbf{T}^2 \times \mathbf{S}^1 \times \mathbf{R}_+ \times [-1, 1])$ weak-* for each $\epsilon > 0$, we conclude by a double limit argument that

$$K_j(F_0) \rightarrow CE \text{ with } C = \frac{1}{2\pi} \iint_{\mathbf{T}^2 \times \mathbf{S}^1} f^{in}(x, \omega) dx d\omega$$

in $L^\infty(\mathbf{T}^2 \times \mathbf{S}^1 \times \mathbf{R}_+ \times [-1, 1])$ weak-* as $j \rightarrow +\infty$.

Summarizing, we have proved that

$$K_j F_0 \rightarrow \frac{1}{2\pi} \left(\iint_{\mathbf{T}^2 \times \mathbf{S}^1} \int_0^\infty \int_{-1}^1 F_0(x, \omega, s, h) dh ds dx d\omega \right) E$$

in $L^\infty(\mathbf{T}^2 \times \mathbf{S}^1 \times \mathbf{R}_+ \times [-1, 1])$ weak-* as $j \rightarrow +\infty$. Replacing F_0 with $K_t F_0$ for each $t \in [0, 1]$ and noticing that

$$\begin{aligned} \iint_{\mathbf{T}^2 \times \mathbf{S}^1} \int_0^\infty \int_{-1}^1 K_t F_0(x, \omega, s, h) dh ds dx d\omega \\ = \iint_{\mathbf{T}^2 \times \mathbf{S}^1} \int_0^\infty \int_{-1}^1 F_0(x, \omega, s, h) dh ds dx d\omega \end{aligned}$$

we conclude that

$$K_t F_0 \rightarrow \frac{1}{2\pi} \left(\iint_{\mathbf{T}^2 \times \mathbf{S}^1} \int_0^\infty \int_{-1}^1 F_0(x, \omega, s, h) dh ds dx d\omega \right) E$$

in $L^\infty(\mathbf{T}^2 \times \mathbf{S}^1 \times \mathbf{R}_+ \times [-1, 1])$ weak-* as $t \rightarrow +\infty$.

11. PROOF OF THEOREM 3.5

The argument used in the proof is reminiscent of the one used in [12, 14].

Assume the existence of a profile $\Phi(t)$ such that the estimate (3.1) holds. Therefore, for each initial data $f^{in} \in L^2(\mathbf{T}^2 \times \mathbf{S}^1)$, the solution

$$F(t, \cdot, \cdot, \cdot, \cdot) = K_t(f^{in}(\cdot, \cdot)E(\cdot, \cdot))$$

of the Cauchy problem satisfies

$$\begin{aligned} \|F(t, \cdot, \cdot, \cdot, \cdot)\|_{L^2(\mathbf{T}^2 \times \mathbf{S}^1 \times \mathbf{R}_+ \times [-1, 1])} &\leq \| \langle f^{in} \rangle E \|_{L^2(\mathbf{T}^2 \times \mathbf{S}^1 \times \mathbf{R}_+ \times [-1, 1])} \\ &\quad + \Phi(t) \|F(0, \cdot, \cdot, \cdot, \cdot)\|_{L^2(\mathbf{T}^2 \times \mathbf{S}^1 \times \mathbf{R}_+ \times [-1, 1])} \\ &= \langle f^{in} \rangle \sqrt{2\pi} \|E\|_{L^2(\mathbf{R}_+ \times [-1, 1])} \\ &\quad + \Phi(t) \|f^{in}\|_{L^2(\mathbf{T}^2 \times \mathbf{S}^1)} \|E\|_{L^2(\mathbf{R}_+ \times [-1, 1])}. \end{aligned}$$

Assume $f^{in} \geq 0$ a.e. on $\mathbf{T}^2 \times \mathbf{S}^1$; then $F \geq 0$ a.e. on $\mathbf{R}_+ \times \mathbf{T}^2 \times \mathbf{S}^1 \times \mathbf{R}_+ \times [-1, 1]$, so that the right-hand side of the equation satisfied by F is a.e. nonnegative on $\mathbf{R}_+ \times \mathbf{T}^2 \times \mathbf{S}^1 \times \mathbf{R}_+ \times [-1, 1]$. Thus $F \geq G$ a.e. on $\mathbf{R}_+ \times \mathbf{T}^2 \times \mathbf{S}^1 \times \mathbf{R}_+ \times [-1, 1]$, where G is the solution of the Cauchy problem

$$\begin{cases} (\partial_t + \omega \cdot \nabla_x - \partial_s)G(t, x, \omega, s, h) = 0, \\ G(0, x, \omega, s, h) = f^{in}(x, \omega)E(s, h). \end{cases}$$

The Cauchy problem above can be solved by the method of characteristics, which leads to the explicit formula

$$G(t, x, \omega, s, h) = f^{in}(x - t\omega, \omega)E(s + t, h),$$

for a.e. $(t, x, \omega, s, h) \in \mathbf{R}_+ \times \mathbf{T}^2 \times \mathbf{S}^1 \times \mathbf{R}_+ \times [-1, 1]$. Thus

$$\begin{aligned} & \|F(t, \cdot, \cdot, \cdot, \cdot)\|_{L^2(\mathbf{T}^2 \times \mathbf{S}^1 \times \mathbf{R}_+ \times [-1, 1])} \\ & \geq \|G(t, \cdot, \cdot, \cdot, \cdot)\|_{L^2(\mathbf{T}^2 \times \mathbf{S}^1 \times \mathbf{R}_+ \times [-1, 1])} \\ & = \|f^{in}\|_{L^2(\mathbf{T}^2 \times \mathbf{S}^1)} \left(\int_t^\infty \int_{-1}^1 E(s, h)^2 dh ds \right)^{1/2} \\ & \geq \|f^{in}\|_{L^2(\mathbf{T}^2 \times \mathbf{S}^1)} \frac{1}{\sqrt{2}} \left(\int_t^\infty \left(\int_{-1}^1 E(s, h) dh \right)^2 ds \right)^{1/2}. \end{aligned}$$

Therefore, if there exist a profile $\Phi(t)$ satisfying the estimate in the statement of the theorem, one has

$$\left(\int_t^\infty \left(\int_{-1}^1 E(s, h) dh \right)^2 ds \right)^{1/2} \leq \left(\frac{\sqrt{2\pi} \langle f^{in} \rangle}{\|f^{in}\|_{L^2(\mathbf{T}^2 \times \mathbf{S}^1)}} + \Phi(t) \right) \sqrt{2} \|E\|_{L^2(\mathbf{R}_+ \times [-1, 1])}$$

for each $t > 0$, and for each $f^{in} \in L^2(\mathbf{T}^2 \times \mathbf{S}^1)$ s.t. $f^{in} \geq 0$ a.e. on $\mathbf{T}^2 \times \mathbf{S}^1$.

Let $\rho \in C(\mathbf{R}^2)$ such that

$$\rho \geq 0, \quad \text{supp}(\rho) \subset \left(-\frac{1}{4}, \frac{1}{4}\right)^2,$$

and set

$$\rho_\epsilon(x) := \rho\left(\frac{x}{\epsilon}\right)$$

for each $\epsilon \in (0, 1)$. Define $\tilde{\rho}_\epsilon$ as the periodicized bump function

$$\tilde{\rho}_\epsilon(x) := \sum_{k \in \mathbf{Z}^2} \rho_\epsilon(x + k).$$

Clearly

$$\begin{aligned} \|\tilde{\rho}_\epsilon\|_{L^1(\mathbf{T}^2)} &= \|\rho_\epsilon\|_{L^1(\mathbf{R}^2)} = \epsilon^2 \|\rho\|_{L^1(\mathbf{R}^2)}, \\ \|\tilde{\rho}_\epsilon\|_{L^2(\mathbf{T}^2)} &= \|\rho_\epsilon\|_{L^2(\mathbf{R}^2)} = \epsilon \|\rho\|_{L^2(\mathbf{R}^2)}. \end{aligned}$$

Choosing $f^{in}(x, \omega) := \rho_\epsilon(x)$ in the inequality above leads to

$$\left(\int_t^\infty \left(\int_{-1}^1 E(s, h) dh \right)^2 ds \right)^{1/2} \leq \left(\epsilon \frac{\|\rho\|_{L^1(\mathbf{R}^2)}}{\|\rho\|_{L^2(\mathbf{R}^2)}} + \Phi(t) \right) \sqrt{2} \|E\|_{L^2(\mathbf{R}_+ \times [-1, 1])}$$

and, letting $\epsilon \rightarrow 0^+$, we conclude that

$$\left(\int_t^\infty \left(\int_{-1}^1 E(s, h) dh \right)^2 ds \right)^{1/2} \leq \sqrt{2} \Phi(t) \|E\|_{L^2(\mathbf{R}_+ \times [-1, 1])}.$$

That $\Phi(t) = o(t^{-3/2})$ as $t \rightarrow +\infty$ is in contradiction with statement 3) in Theorem 3.1, which implies that

$$\left(\int_t^\infty \left(\int_{-1}^1 E(s, h) dh \right)^2 ds \right)^{1/2} \sim \frac{1}{\sqrt{3}\pi^2} \frac{1}{t^{3/2}}$$

as $t \rightarrow +\infty$, while statement 1) in the same theorem implies that

$$\|E\|_{L^2(\mathbf{R}_+ \times [-1, 1])}^2 \leq \int_0^\infty \int_{-1}^1 E(s, h) E(0, h) dh ds = \int_0^\infty \int_{-1}^1 E(s, h) dh ds = 1.$$

REFERENCES

- [1] S. Blank, N. Krikorian, Thom's problem on irrational flows. *Internat. J. Math.* **4**, 721–726, (1993).
- [2] F. Boca, A. Zaharescu, The distribution of the free path lengths in the periodic two-dimensional Lorentz gas in the small-scatterer limit. *Commun. Math. Phys.* **269**, 425–471, (2007).
- [3] C. Boldrighini, L.A. Bunimovich, Ya.G. Sinai, On the Boltzmann equation for the Lorentz gas. *J. Statist. Phys.* **32** (1983), 477–501.
- [4] J. Bourgain, F. Golse, B. Wennberg On the distribution of free path lengths for the periodic Lorentz gas. *Commun. Math. Phys.* **190**, 491–508, (1998).
- [5] V.A. Bykovskii, A.V. Ustinov The statistics of particle trajectories in the inhomogeneous Sinai problem for a two-dimensional lattice *Izvestiya Math.* **73**, 669–688, (2009).
- [6] E. Caglioti, F. Golse, On the distribution of free path lengths for the periodic Lorentz gas III. *Commun. Math. Phys.* **236** (2003), 199–221.
- [7] E. Caglioti, F. Golse, The Boltzmann-Grad limit of the periodic Lorentz gas in two space dimensions. *C. R. Math. Acad. Sci. Paris* **346** (2008), 477–482.
- [8] M. Cessenat, Théorèmes de trace L^p pour des espaces de fonctions de la neutronique. *C. R. Acad. Sci. Paris Sér. I Math.* **299** (1984), 831–834.
- [9] H.S. Dumas, L. Dumas, F. Golse, Remarks on the notion of mean free path for a periodic array of spherical obstacles. *J. Statist. Phys.* **87** (1997), 943–950.
- [10] P. Drude, Zur Elektronentheorie der metalle. *Annalen der Physik* **306** (3) (1900), 566–613.
- [11] G. Gallavotti, Rigorous theory of the Boltzmann equation in the Lorentz gas. Preprint mp_arc 93-304, (1972).
- [12] F. Golse, On the statistics of free-path lengths for the periodic Lorentz gas. Proceedings of the XIVth International Congress on Mathematical Physics (Lisbon 2003), 439–446, World Scientific, Hackensack NJ, 2005.
- [13] F. Golse, The periodic Lorentz Gas in the Boltzmann-Grad Limit (joint work with J. Bourgain, E. Caglioti and B. Wennberg). Report 54/2006, p. 3214, Oberwolfach Reports, vol. 3, European Math. Soc. Publishing House, (2006)
- [14] F. Golse, On the periodic Lorentz gas in the Boltzmann-Grad scaling. *Ann. Faculté des Sci. Toulouse* **17** (2008), 735–749.
- [15] F. Golse, B. Wennberg, On the distribution of free path lengths for the periodic Lorentz gas II. *M2AN Modél. Math. et Anal. Numér.* **34**, 1151–1163, (2000).
- [16] A.Ya. Khinchin, “Continued Fractions”. The University of Chicago Press, Chicago, Ill.-London, 1964.
- [17] H. Lorentz, Le mouvement des électrons dans les métaux. *Arch. Néerl.* **10** (1905), 336–371.
- [18] J. Marklof, A. Strömbergsson, The distribution of free path lengths in the periodic Lorentz gas and related lattice point problems. Preprint arXiv:0706.4395, to appear in *Ann. of Math.*.
- [19] J. Marklof, A. Strömbergsson, The Boltzmann-Grad limit of the periodic Lorentz gas. Preprint arXiv:0801.0612, to appear in *Ann. of Math.*.
- [20] J. Marklof, A. Strömbergsson, Kinetic transport in the two-dimensional periodic Lorentz gas. *Nonlinearity* **21** (2008), 1413–1422.
- [21] W. Philipp, Some metrical theorems in number theory, *Pacific J. of Math.* **20** (1967), 109–127.
- [22] V.T. Sós, On the distribution mod. 1 of the sequence $n\alpha$. *Ann. Univ. Sci. Univ. Budapest. Eötvös Math.* **1** (1958), 127–134.
- [23] H. Spohn, The Lorentz process converges to a random flight process. *Commun. Math. Phys.* **60** (1978), 277–290.
- [24] J. Suranyi, Über die Anordnung der Vielfachen einer reellen Zahl mod. 1. *Ann. Univ. Sci. Univ. Budapest. Eötvös Math.* **1** (1958), 107–111.
- [25] L. Tartar, Compensated compactness and applications to partial differential equations. In *Nonlinear analysis and mechanics: Heriot-Watt Symposium. Vol. IV*, R.J. Knops ed., Research Notes in Mathematics 39, Pitman, London 1979.
- [26] K. Yosida “Functional Analysis”, Springer Verlag, Berlin Heidelberg New-York, 1980.

(E. C.) UNIVERSITÀ DI ROMA “LA SAPIENZA”, DIPARTIMENTO DI MATEMATICA, P.LE ALDO MORO 5, 00185 ROMA, ITALIA

E-mail address: caglioti@mat.uniroma1.it

(F. G.) ECOLE POLYTECHNIQUE, CENTRE DE MATHÉMATIQUES L. SCHWARTZ, F91128 PALAISEAU CEDEX, & UNIVERSITÉ P.-ET-M. CURIE, LABORATOIRE J.-L. LIONS, BP 187, F75252 PARIS CEDEX 05

E-mail address: francois.golse@math.polytechnique.fr