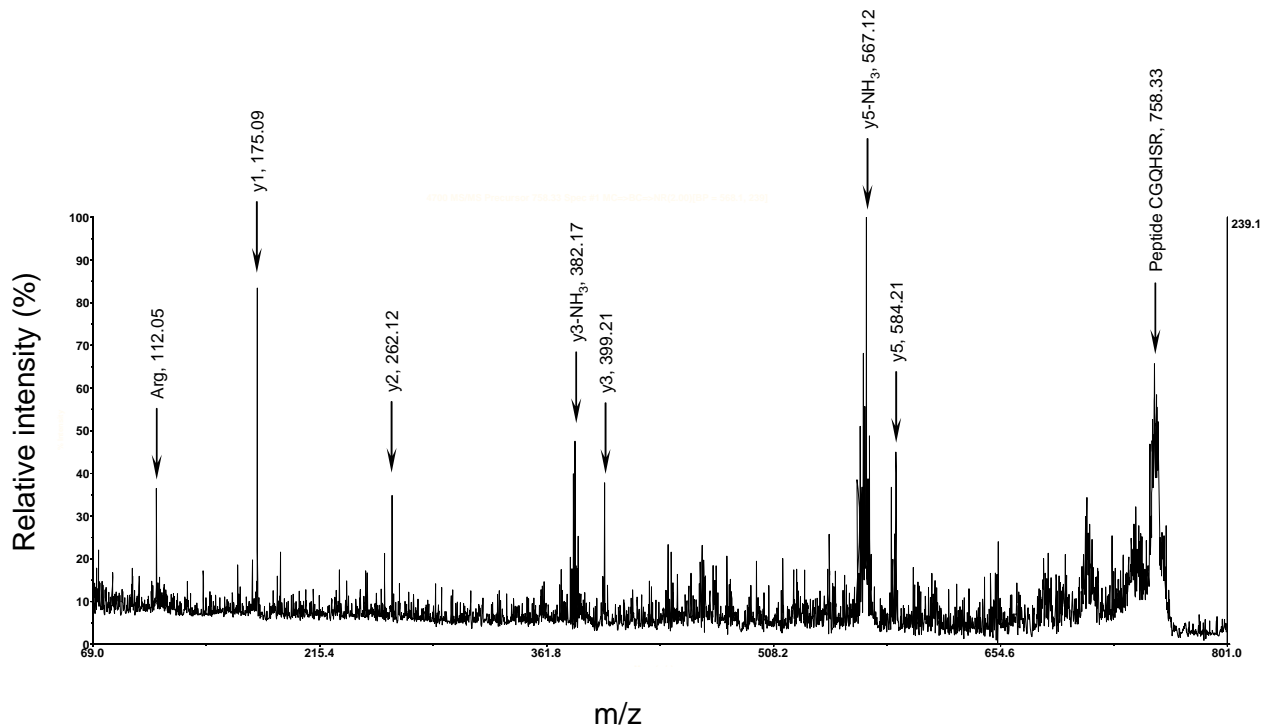


Peptide: CGQHSR

Calculated $[M+H]^+ = m/z$ 758.34

Experimental $[M+H]^+ = m/z$ 758.33



Supplementary Figure 6. MS/MS fragmentation of a peptide of At5g14920 located at its C-terminus

This protein has been identified in the K CWP fraction obtained by CEC (Irshad et al. 2008). MS/MS fragmentation has been performed by MALDI-TOF-TOF on the parent ion of m/z 758.33.