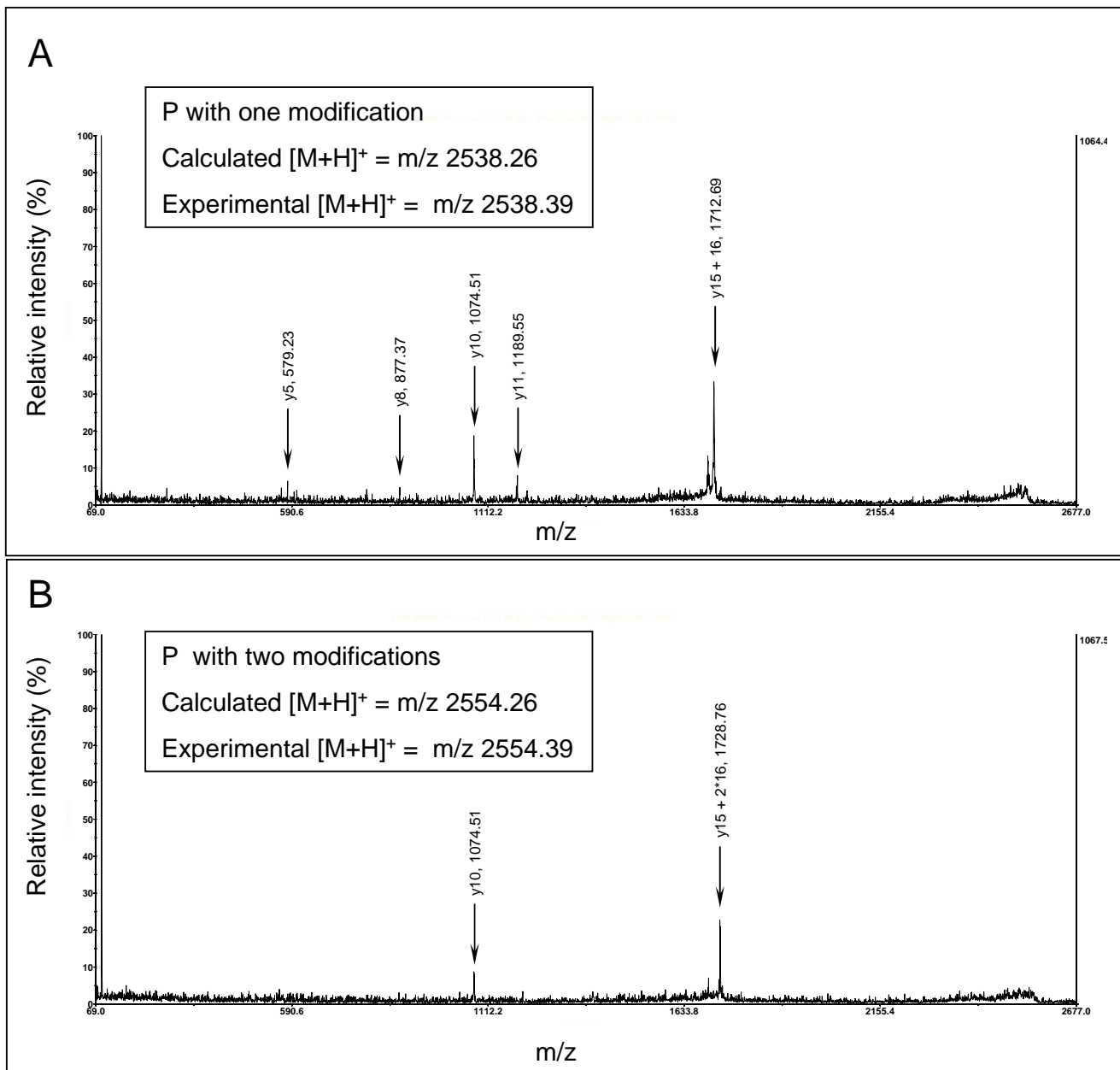


P peptide: GATILASPD**PSHWD**VVSPLPSYGR



Supplementary Figure 5. MS/MS fragmentation of the two modified forms of the P peptide of At3g16850

This protein has been identified in the Q CWP fraction obtained by CEC (Irshad et al. 2008). MS/MS fragmentation has been performed by MALDI-TOF-TOF on the parent ion of m/z 2538.39 (**A**) and the parent ion of m/z 2554.39 (**B**). The pentapeptide on which the two modifications are located is shown in bold.