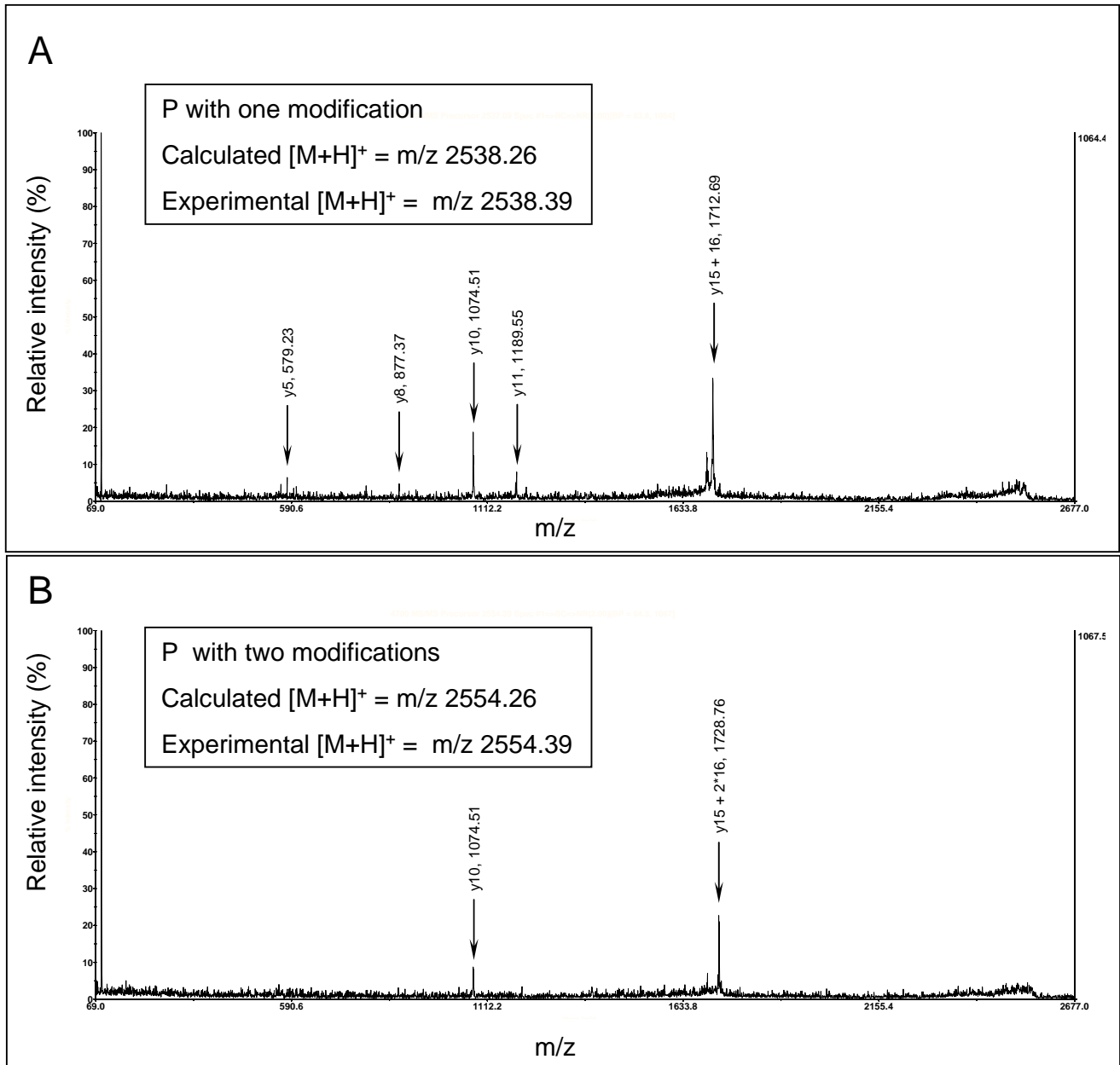


Supplementary Figure 4. MS/MS fragmentation of the P peptide of At3g16850

This protein has been identified in the Q CWP fraction obtained by CEC (Irshad et al. 2008). MS/MS fragmentation has been performed by MALDI-TOF-TOF on the parent ion of m/z 2522.42

P peptide: GATILASPD**PSHWD**VVSPLPSYGR



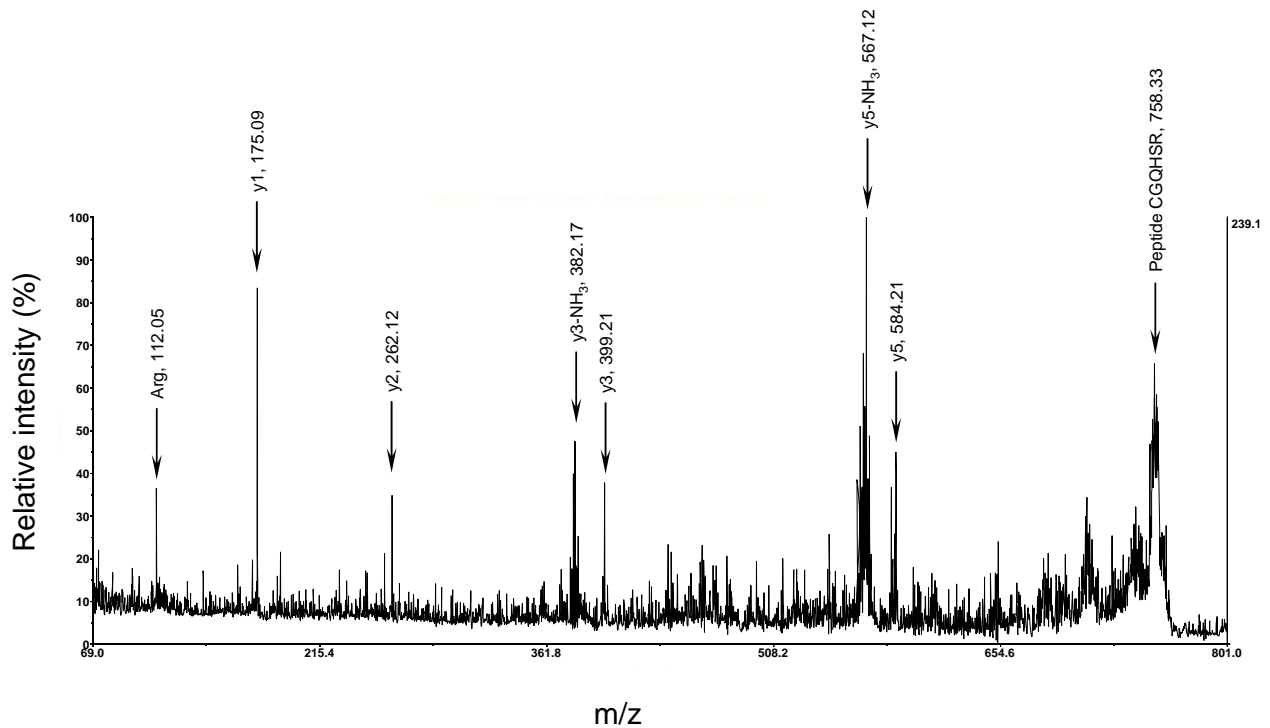
Supplementary Figure 5. MS/MS fragmentation of the two modified forms of the P peptide of At3g16850

This protein has been identified in the Q CWP fraction obtained by CEC (Irshad et al. 2008). MS/MS fragmentation has been performed by MALDI-TOF-TOF on the parent ion of m/z 2538.39 (**A**) and the parent ion of m/z 2554.39 (**B**). The pentapeptide on which the two modifications are located is shown in bold.

Peptide : CGQHSR

Calculated $[M+H]^+ = m/z$ 758.34

Experimental $[M+H]^+ = m/z$ 758.33



Supplementary Figure 6. MS/MS fragmentation of a peptide of At5g14920 located at its C-terminus

This protein has been identified in the K CWP fraction obtained by CEC (Irshad et al. 2008). MS/MS fragmentation has been performed by MALDI-TOF-TOF on the parent ion of m/z 758.33.