



HAL
open science

Microstructure of Supported Cobalt Fischer-Tropsch Catalysts

O. Ducreux, B. Rebours, John W. Lynch, Dominique Bazin, Magalie Roy-Auberger

► **To cite this version:**

O. Ducreux, B. Rebours, John W. Lynch, Dominique Bazin, Magalie Roy-Auberger. Microstructure of Supported Cobalt Fischer-Tropsch Catalysts. *Oil & Gas Science and Technology - Revue d'IFP Energies nouvelles*, 2009, 64 (1), pp.49-62. 10.2516/ogst:2008039 . hal-00430293

HAL Id: hal-00430293

<https://hal.science/hal-00430293>

Submitted on 31 Jan 2019

HAL is a multi-disciplinary open access archive for the deposit and dissemination of scientific research documents, whether they are published or not. The documents may come from teaching and research institutions in France or abroad, or from public or private research centers.

L'archive ouverte pluridisciplinaire **HAL**, est destinée au dépôt et à la diffusion de documents scientifiques de niveau recherche, publiés ou non, émanant des établissements d'enseignement et de recherche français ou étrangers, des laboratoires publics ou privés.

Microstructure of Supported Cobalt Fischer-Tropsch Catalysts

O. Ducreux^{1*}, B. Rebours², J. Lynch¹, M. Roy-Auberger² and D. Bazin³

¹ Institut français du pétrole, IFP-Rueil, 1-4 avenue de Bois-Préau, 92852 Rueil-Malmaison - France

² Institut français du pétrole, IFP-Lyon, BP 3, 69390 Vernaison - France

³ Laboratoire de Physique des Solides, Bât. 510, Université Paris XI, 91405 Orsay Cedex - France

e-mail: olivier.ducreux@axens.net - bernadette.rebours@ifp.fr - john.lynch@ifp.fr - magalie.roy@ifp.fr - bazin@lps.u-psud.fr

*Currently at Axens, 89 boulevard Franklin Roosevelt, 92508 Rueil-Malmaison, France

Résumé — Microstructure de catalyseurs Fischer-Tropsch à base de cobalt supporté — La structure de particules métalliques de cobalt supporté sur silice ou sur alumine, et en présence ou non d'un promoteur (Ru), a été étudiée *in situ* par diffraction des rayons X conventionnelle et anormale. Par comparaison avec des diagrammes simulés, il est montré que cette structure est caractérisée par la présence de défauts d'empilement dont la densité est directement reliée à la température de réduction du cobalt. Des traitements de carburation/décarburation sous CO et H₂ nous ont permis de modifier de manière contrôlée la microstructure du cobalt métallique pour un même support tout en limitant la variation de la taille des particules. Quel que soit le support, et en présence ou non d'un promoteur, les basses températures de réduction favorisent la formation de la forme hexagonale compacte du cobalt, alors qu'une réduction à haute température favorisera la forme cubique faces centrées. Dans les conditions de la synthèse Fischer-Tropsch, les catalyseurs contenant du cobalt à forte densité d'empilements de type hexagonal compact montrent une activité en conversion du CO nettement supérieure à celle des catalyseurs majoritairement cubiques.

Abstract — Microstructure of Supported Cobalt Fischer-Tropsch Catalysts — The structures of metallic cobalt particles supported on silica (with and without Ru promoter) and on alumina have been investigated *in-situ* by conventional and anomalous X-ray diffraction. Comparison with simulated XRD patterns shows the structure to consist of a defect phase characterised by the presence of stacking faults, the density of which is directly related to the temperature at which the cobalt oxide is reduced. Controlled modification of the cobalt microstructure, while maintaining the same support and promoter has been achieved with limited variation of the particle size, notably via CO – H₂ treatment leading to the formation and decomposition of cobalt carbide. Independently of the support or the presence of a promoter, low reduction temperatures increase the tendency to form hexagonal close packed (hcp) structure whilst at high reduction temperatures face centred cubic (fcc) stacking is preferentially formed. The catalytic activity for CO conversion in Fischer-Tropsch conditions is greatly increased for catalysts with a majority of hcp stacking compared to those containing predominantly fcc phase particles.

INTRODUCTION

Among the industrial challenges for the near future, the production of hydrocarbons from synthesis gas (H_2 , CO) in the Fischer-Tropsch process is one of the most important [1, 2] as synthesis gas can be produced from a large variety of sources (natural gas, biomass, coal, etc.) and the process can be oriented towards a variety of products (fuels, paraffins, alcohols, etc.). The catalytic activity and selectivity of the frequently used Co based catalysts in CO hydrogenation have been shown to depend on several factors such as particle size, nature of the support [3-5], the presence of promoters [6-8] and pre-treatment conditions [9]. Modification of preparation parameters is known to strongly affect the microstructure of cobalt supported catalysts [10]. The microstructure of the metallic phase has been the subject of several studies by X-ray diffraction (XRD) as cobalt can exist in both hexagonal close packed (hcp) and face centred cubic (fcc) forms. However, perhaps because of the number of parameters that can be varied, it is difficult to extract from the literature a clear image of the specific effect of cobalt particle microstructure on Fischer-Tropsch activity.

In-situ XRD studies of silica supported cobalt catalysts have given evidence that the fcc form is prevalent after reduction under hydrogen whilst the hcp form results from direct syngas ($CO + H_2$) activation [11]. Studies on used catalysts after high pressure Fischer-Tropsch synthesis have found that fcc cobalt forms on silica supports whereas the hcp structure is detected on alumina supports [12]. Zirconia support was found to promote poorly crystalline hexagonal metallic cobalt [13]. In the latter study, it was proposed that amorphous cobalt or hcp cobalt with crystallographic defects are active phases in the Fischer-Tropsch reaction, while fcc crystallised cobalt has lower catalytic activity.

In nanometre scale particles both fcc and hcp forms may coexist [14, 15], possibly leading to an influence of the resulting stacking faults on the catalytic activity. For example, as underlined by S. Kala *et al.* [16], the presence of many stacking faults in nanoparticles results in large amounts of hydrogen incorporation.

In this paper, we investigate the microstructure of cobalt catalysts supported on silica (with and without Ru promoter) and on alumina via *in-situ* X-ray diffraction (XRD) experiments, including synchrotron based anomalous XRD. In order to eliminate as much as possible variables such as type of support or presence of a promoter, we have concentrated our study on post-synthesis modification of the microstructure of the metallic cobalt particles. The main aim of the present study is thus to elucidate the role in Fischer-Tropsch activity of the fcc and hcp phases, and of the presence of stacking faults. Careful extraction of the XRD signal due to the metallic phase and confirmation, through diffraction pattern simulation, of the presence of stacking faults in the nanometre scale particles were a pre-requisite to achieve this goal.

1 EXPERIMENTAL

1.1 Catalyst Preparation

Bulk Co_3O_4 purchased from Ultrex was used as a control sample for *in-situ* XRD. Catalyst samples were prepared via impregnation using a cobalt nitrate solution on amorphous silica, poorly crystallised gamma alumina and highly crystallised titanium oxide (Degussa P25). The Co content was measured by X-ray fluorescence and the surface area by BET (see *Table 1*).

TABLE 1
Characteristics of the catalysts studied

Support	Co content (wt.% \pm 0.03)	Surface area (m^2/g)
None (Commercial oxide)	73.4	10
SiO ₂	13.0	460
Al ₂ O ₃	13.3	180
TiO ₂	11.3	20

Prior to analysis, all the catalysts were dried at 120°C and calcined under air at 400°C for 4 h.

An additional ruthenium promoted catalyst, which we shall call Co-Ru/SiO₂, was prepared from a calcined Co/SiO₂ sample by impregnation with $(Ru(NH_3)_6)Cl_3$ followed by drying at 110°C and calcination for 4 h at 300°C. The Ru content was determined as 0.45 wt.%.

The catalysts were characterised by temperature programmed reduction (TPR), carried out with a 5% H_2/Ar mixture at a gas flow rate of 30 mL/min and a temperature ramp of 2°C/min.

1.2 X-Ray Diffraction

1.2.1 Conventional X-Ray Diffraction

Powder diffraction patterns were obtained using a Siemens D501 $\theta/2\theta$ diffractometer with a copper anode and a scintillation detector. Contributions other than $Cu K\alpha$, as well as secondary fluorescence from the cobalt, were eliminated using a graphite monochromator placed in the path of the diffracted beam.

1.2.2 Anomalous X-Ray Diffraction

Anomalous X-ray diffraction using synchrotron radiation allows a diffraction signal to be obtained which corresponds only to the chemical phases containing a specific type of atom. Two diffraction diagrams are collected at two energies far from and close to the absorption edge in order to vary the

imaginary part of the scattering factor for the specific type of atom. Anomalous X-ray diffraction measurements were carried out at the H10 beamline at the 1.85 GeV DCI storage ring of the LURE facility at Orsay (France). This beamline [17] was devoted to the investigation of poorly crystallized materials by combining X-ray absorption spectroscopy (XAS) and X-ray diffraction (XRD) in the 4-20 keV energy range. The photon source was a bending magnet on the DCI storage ring. The intensity of the positron beam was about 300 mA during data collection.

1.2.3 *In-situ* Analysis of Structure and Catalytic Activity

The samples were treated in an Anton Paar XRK reaction chamber. The powdered sample (0.2 g) was placed on a ceramic porous holder and pressed lightly. The inlet reactant flow passed through the sample. For all *in-situ* XRD studies of reduction and carbide formation, gas pressure was 1 bar and flow rate was 1 L/h. In order to follow the structural modifications during reduction, samples were analysed in a stream of pure hydrogen with a temperature ramp of 5°C/min and isothermal periods of 2.5 h during data acquisition. We have previously reported cobalt carbide formation under Fischer-Tropsch reaction conditions [18] during *in-situ* treatments of several hundreds of hours. In the present study, in order to accelerate carbide formation, the reduced catalysts were treated in the XRK reaction chamber under pure CO at 230°C for 15 h. After carbide formation was confirmed (see below), the metallic cobalt phase was regenerated under pure hydrogen at 230°C.

The gas handling system of the reaction chamber has been modified so as to be able to carry out analysis under realistic Fischer-Tropsch conditions. The reaction conditions have been chosen in order to avoid heavy wax formation:

$T = 230^\circ\text{C}$, $P = 3$ bar, $\text{H}_2/\text{CO} = 9$, $W/F \approx 8.4 \times 10^{-2}$ g·h·L⁻¹. Products were analysed at the exit by on-line gas chromatography and the heaviest products were condensed after the cell for off-line analysis. The activity was followed via CO consumption.

1.3 Modelling Wide Angle X-Ray Scattering

Simulation of XRD diagrams allows the influence of stacking faults on the diffracted intensity to be studied. Two approaches to XRD simulation are considered here, an atomistic model of particles in which stacking faults are explicitly included, and statistical modelling which allows some quantitative information to be obtained on the stacking fault probability. In both cases, any contribution from the support is not included in the simulation.

1.3.1 Atomistic Simulation of Cobalt Clusters

A simple way to calculate the diffraction diagram of the metallic part of a catalyst composed of a collection of nanometer scale metallic clusters with known geometry but random orientation and position is to use the Debye scattering Equation 1. This type of simulation has recently been applied successfully to the determination of stacking fault densities in gold nanoclusters [19].

$$I(q) = \sum_i \sum_j f_i(q) f_j(q) \sin(qR_{ij}) / qR_{ij} \quad (1)$$

In this equation, $I(q)$ is the angle dependent intensity from coherent scattering, q bisects the angle between the incident and scattered directions, which in turn define the scattering plane. The sums over i and j are over all the atoms, R_{ij} being the distance between the atom i and j and f_i and f_j being the

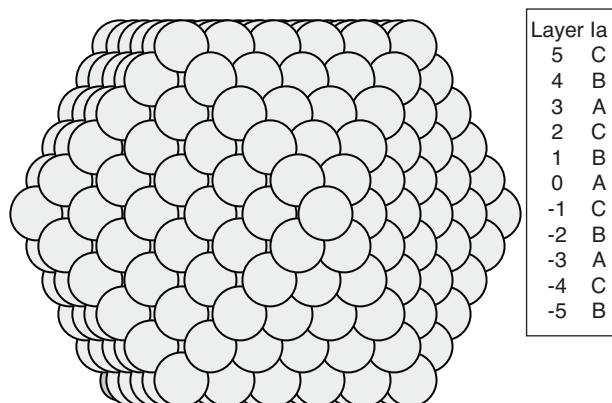


Figure 1

Representation of a cubooctahedral cluster containing 561 atoms and an fcc stacking of atomic layers.

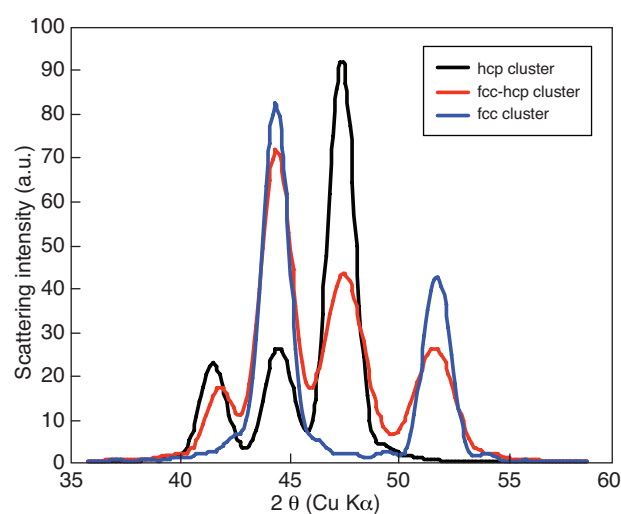


Figure 2

Calculated scattering intensities of clusters with different stacking sequences.

angle dependent atomic scattering factors, taken from reference [20].

To illustrate the stacking sequence, Figure 1 represents a small (3 nm) cubooctahedral fcc cluster, containing 561 atoms.

In the simulations shown in Figure 2 and the following sections, diffraction intensities were calculated for much larger (7 nm diameter) clusters, containing 36 atomic layers (17900 atoms). Starting from an fcc cluster, stacking faults were progressively introduced in the particle simulation and the atomic coordinates recalculated. At the end of this structural modification, a hcp cluster is obtained. In the calculated diffraction diagrams of the end-members of this series the Bragg diffraction peaks of an fcc or a hcp structure are clearly visible. We have also calculated the diffraction diagram for a fcc-hcp cluster which is fcc in the upper part (positive numbered layers) and hcp in the lower part (negative numbered layers). The diffraction diagram of this case presenting two virtually independent fcc and hcp structures also displays the two sets of diffraction peaks, as would also be expected for a mixture of particles, each presenting one or other of the structures.

1.3.2 Statistical Simulation

The DIFFAX software [21] allows calculation of the diffracted intensity from an infinite crystal containing stacking faults. Independent probabilities are defined for transitions from an fcc structure to a hcp structure and for the reverse transition. An example is given in Figure 3 for an fcc structure with increasing probabilities of fcc to hcp transition. One obvious effect is to decrease the diffracted intensity at the fcc peak positions and increase the hcp contribution. The introduction of stacking faults clearly also leads to a diffracted intensity distribution different from that of a superposition of fcc and hcp structures. Of particular note here is the appearance of diffracted intensity at positions intermediate between those of the pure fcc or hcp structures. In addition, peak broadening is predicted, due to the introduction of a finite thickness of the coherent domains. This latter effect renders the calculation of the “real” particle size difficult in the presence of stacking faults.

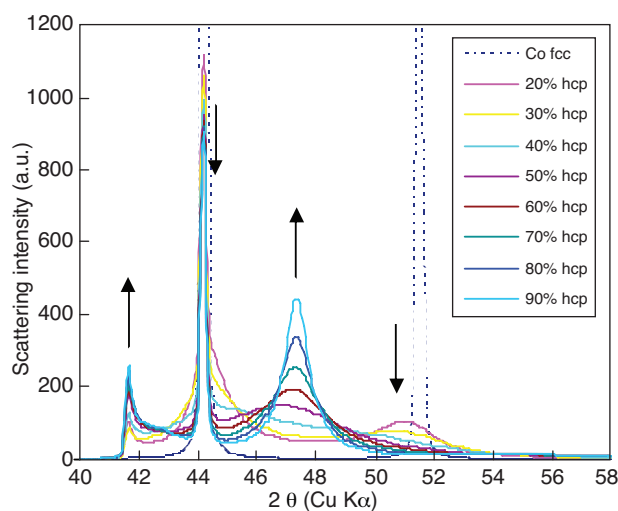


Figure 3

Calculated scattering intensities of clusters with different stacking fault probabilities. Arrows are a guide to the eye, showing the increase or decrease of intensity due to an increasing probability of fcc to hcp transition.

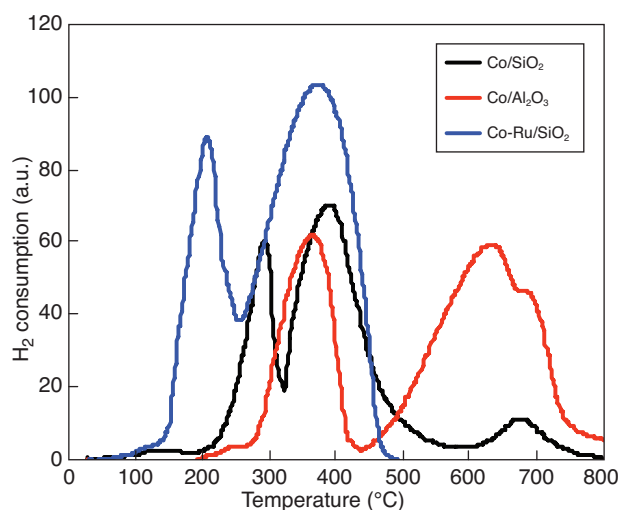


Figure 4

TPR analysis of the oxide catalysts.

2 EXPERIMENTAL RESULTS

2.1 Temperature Programmed Reduction of Supported Catalysts

TRP profiles are shown in Figure 4 for Co/SiO₂, Co-Ru/SiO₂ and Co/Al₂O₃ catalysts.

For Co/TiO₂, a reduction profile intermediate between the silica and alumina samples was observed. The TPR profile of this solid is not shown as its reduction was not studied in detail, but its final reduced state is investigated below, using anomalous X-ray diffraction.

Two major reduction peaks are observed for all samples. Although there is some uncertainty in the literature as to the attribution of these peaks, they are usually taken to be due to the reduction of Co₃O₄ to CoO (lower temperature peak) then to Co metal (higher temperature peak). High temperature reduction features are also observed (in the range 600 to 800°C) which may be due to the formation of highly dispersed cobalt silicate or aluminate (see for example Ref. [22]) but it is not our intention in this work to discuss these phenomena in detail.

The key result for the purposes of further study of the cobalt structure is that Co-Ru/SiO₂ reduces at a lower

temperature than Co/SiO₂ whereas Co/Al₂O₃ is reduced at a higher temperature. The first reduction maximum is observed at 200°C for Co-Ru/SiO₂, 290°C for Co/SiO₂, 325°C for Co/TiO₂ and 380°C for Co/Al₂O₃.

2.2 Reduction of Bulk Co₃O₄ Followed by XRD

Treatment of Co₃O₄ catalysts under hydrogen leads to reduction to CoO and then to consecutive reduction of the CoO to metallic cobalt, the reduction temperature depending somewhat on particle size [23]. For the bulk Co₃O₄ reference oxide, these events can be seen in Figure 5 starting respectively at approximately 250°C and 350°C. The reduction results in the formation of two Co metal phases: a low temperature hexagonal close packed form (Co hcp) which is stable up to 450°C and a high temperature face centred cubic form (Co fcc) which begins to form after reduction above 500°C.

Due to the large crystallite size of the bulk oxide, resulting in sharp diffraction peaks, the contributions of each phase can be clearly differentiated in Figure 5. For the small particle sizes found in catalysts, this will not be the case, in particular for the peaks at 44.2° 2θ (Co fcc) and 44.3° 2θ (Co hcp). Note however that the peaks at 41.4° 2θ and 51.7° 2θ attributed respectively to the Co hcp and the Co fcc structures are well separated from other contributions.

2.3 Reduction of Supported Catalysts Followed by XRD

In-situ X-ray diffraction analysis of the Co/SiO₂ catalyst (Fig. 6) clearly show the disappearance of the CoO phase under H₂ when the reduction temperature increases from 300°C to 400°C. When fully reduced, the formation of a complex Co metal phase, with a broad region of diffracted intensity between 2θ angles of 42° to 54°, close to the positions of both fcc and hcp peaks, is observed starting at a reduction temperature of 300°C. In particular, a broad peak at 51° to 52° 2θ attributed to the Co fcc structure is visible even at low reduction temperatures relative to the bulk hcp to fcc transition. Although the silica support is amorphous, care must however be taken in interpreting the diffracted intensity, as the catalyst preparation itself may lead to the formation of mixed oxide phases that are not reduced under the conditions used here. This point will be considered in detail below.

XRD diagrams for the reduction of Co-Ru/SiO₂ under hydrogen are shown in Figure 7. The form of the diagram observed for the reduction of Co-Ru/SiO₂ (for which a low reduction temperature was observed by TPR) differs somewhat from that observed for the Co/SiO₂ catalyst (see Fig. 8), with a stronger intensity in the regions around the diffraction positions of the Co hcp structure (for instance at 41.4° 2θ). Again, precaution must be exercised in interpreting this diffracted intensity. The diagram nevertheless also points to a complex Co metal phase involving both hcp and fcc stacking.

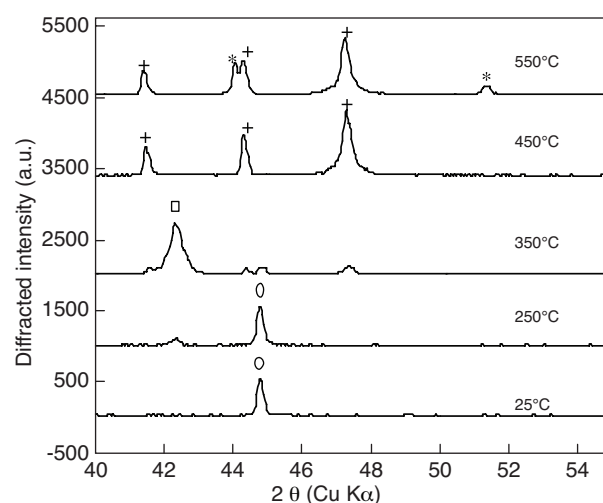


Figure 5

Reduction of bulk Co₃O₄ under hydrogen. Symbols represent expected diffraction peak positions (circles = Co₃O₄; squares = CoO; plus signs = hcp cobalt; asterisks = fcc cobalt).

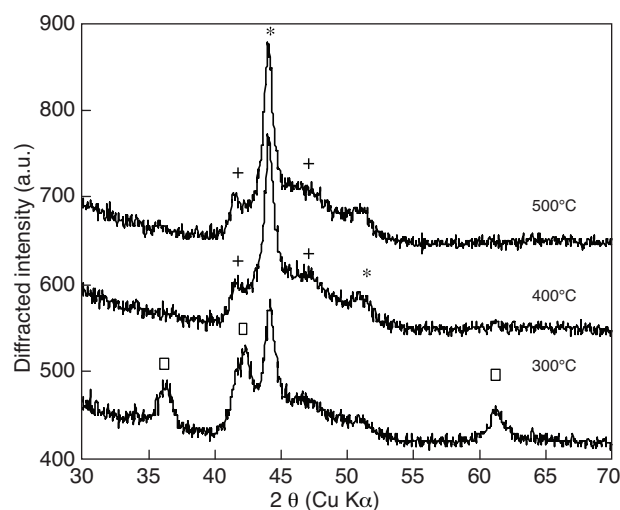


Figure 6

Reduction of Co/SiO₂ under hydrogen. Symbols represent expected diffraction peak positions (squares = CoO; plus signs = hcp cobalt; asterisks = fcc cobalt).

For the Co/Al₂O₃ catalyst (for which a high reduction temperature was observed by TPR), a significant contribution from CoO crystallites was still observed even after treatment with hydrogen at 500°C for several hours (Fig. 9). This is coherent with the TPR profile, showing only partial reduction of the cobalt at this temperature. Due to the CoO contribution, and to that of the alumina support, it is not possible to clearly identify the form of the diffraction pattern due to the cobalt particles. Extraction of the characteristic cobalt metallic component of the diffraction pattern is the subject of the following section.

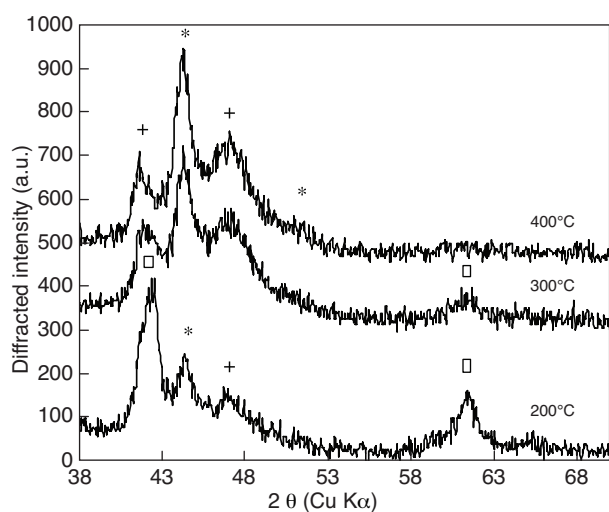


Figure 7

Reduction of Co-Ru/SiO₂ under hydrogen. Symbols represent expected diffraction peak positions (squares = CoO; plus signs = hcp cobalt; asterisks = fcc cobalt).

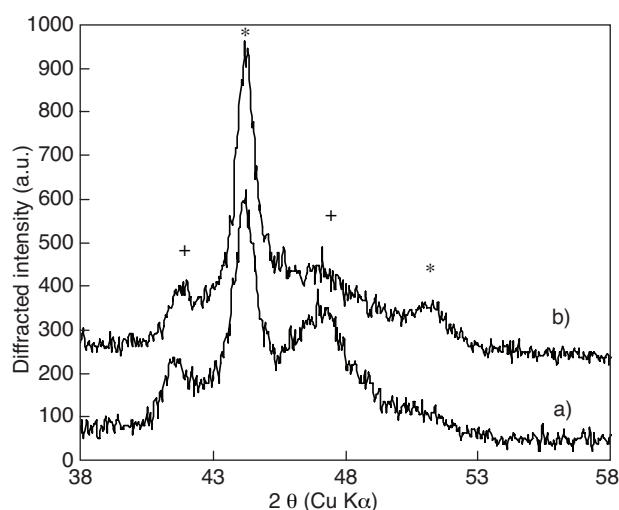


Figure 8

Comparison of reduced a) Co/SiO₂ and b) Co-Ru/SiO₂. Symbols represent expected diffraction peak positions (plus signs = hcp cobalt; asterisks = fcc cobalt).

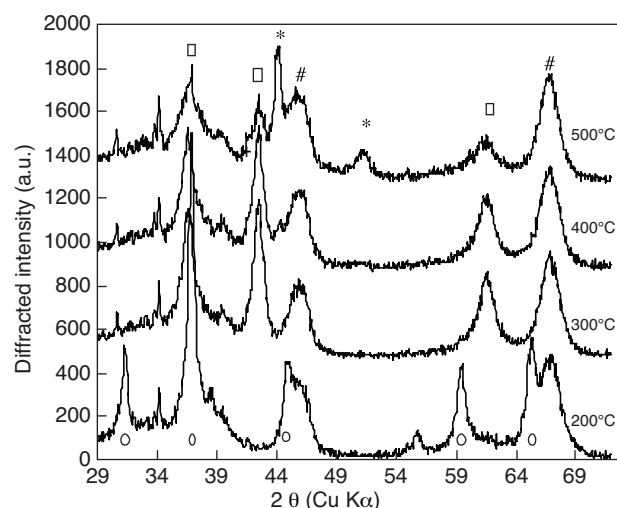


Figure 9

Reduction of Co/Al₂O₃ under hydrogen. Symbols represent expected diffraction peak positions (circles = Co₃O₄; squares = CoO; asterisks = fcc cobalt; hash symbol (#) = Al₂O₃ support).

2.4 Extraction of the “Cobalt XRD” Contribution in Reduced Supported Catalysts

2.4.1 Subtraction of the Support Diagram

A simple means to isolate the contribution to the diffraction pattern from catalyst particles is to subtract the XRD diagram due to the support alone. Some care is however required in

normalisation, due to the difference in sample absorption, and artefacts may be introduced if the support is modified during the catalyst preparation. The effectiveness of this procedure is illustrated in Figure 10 by the case of the calcined Co/Al₂O₃ catalyst. By subtracting, after appropriate normalisation, the diagram of Al₂O₃, the support contribution is removed leaving only diffraction peaks assigned to the Co₃O₄ structure.

The resulting diagrams obtained during reduction of the Co/Al₂O₃ catalyst (Fig. 11) clearly show the persistence of the intermediate oxide CoO up to treatment temperature of 500°C, followed by a complete reduction to metallic cobalt at 550°C. For this catalyst, which shows a high reduction temperature in TPR characterisation, the hcp component is of low intensity, the structure being close to pure fcc.

The *in-situ* XRD experiments, performed under isothermal conditions at a given temperature, suggested that most of the cobalt is reduced at 550°C, even though the dynamic TPR analysis clearly showed a high temperature reduction peak above 600°C.

2.4.2 Anomalous Diffraction

Anomalous X-ray diffraction was used to confirm that the support is not modified during catalyst preparation, for example by the formation of an amorphous mixed oxide phase. Diagrams were recorded after *in-situ* reduction at energies of 10 eV and 100 eV below the Co K edge. As the data collection energies are different, the diagrams are represented as a function of $1/d$ (Å⁻¹). After normalisation, the difference between these two diagrams gives a signal coming only from chemical phases containing cobalt atoms (Fig. 12). The form

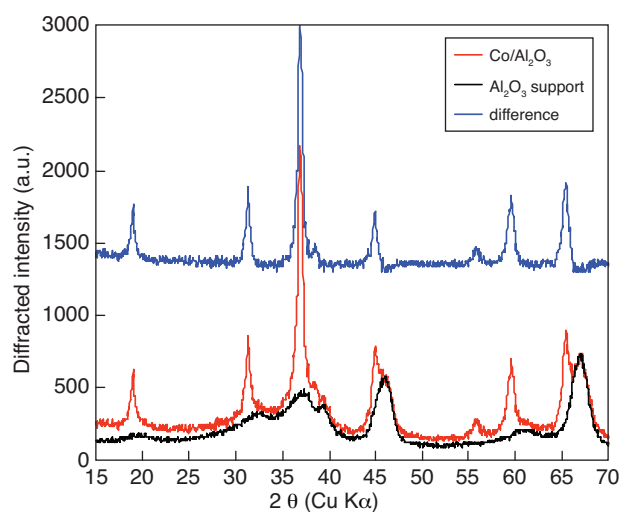


Figure 10

Diffraction patterns of Co/Al₂O₃, Al₂O₃ and the difference pattern (offset for clarity).

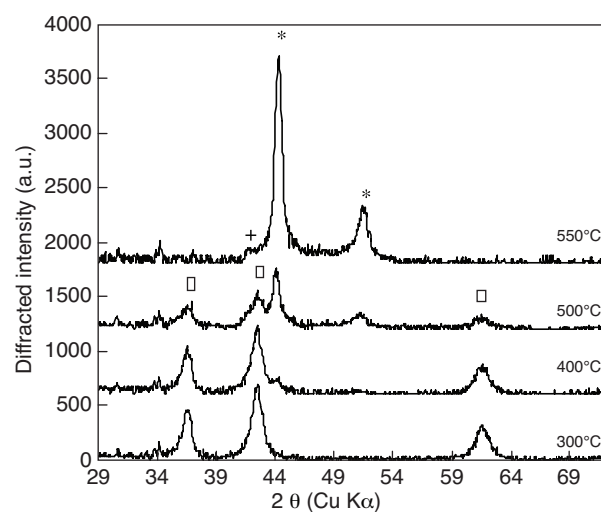


Figure 11

Reduction of Co/Al₂O₃ under hydrogen with Al₂O₃ support contribution subtracted. Symbols represent expected diffraction peak positions (squares = CoO; plus signs = hcp cobalt; asterisks = fcc cobalt).

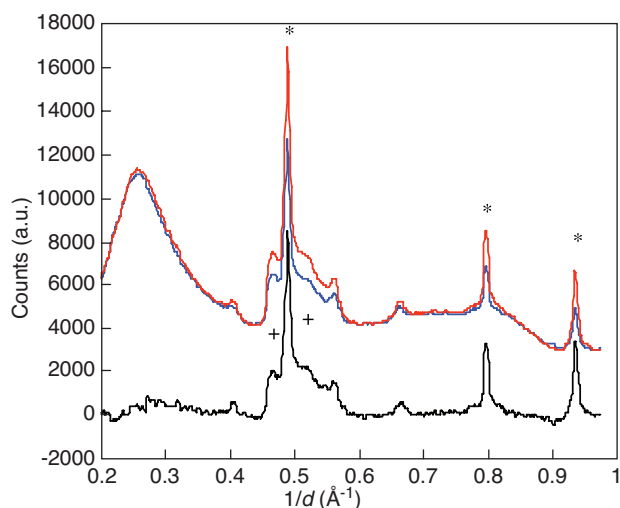


Figure 12

Diffraction patterns of the reduced Co/SiO₂ catalyst recorded 10 eV (blue curve) and 100 eV (red curve) below the Co K edge, and the difference pattern (black curve, rescaled for clarity). Symbols represent expected diffraction peak positions (plus signs = hcp cobalt; asterisks = fcc cobalt).

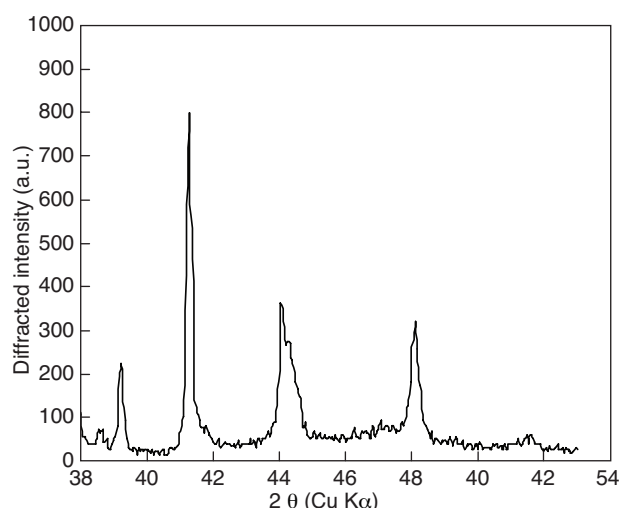


Figure 13

Diffraction pattern of the reduced Co/TiO₂ catalyst. Co peaks are obscured by the support diffraction pattern.

of the diffracted intensities in these difference anomalous XRD patterns are similar to those observed in the laboratory XRD analysis (we illustrate here the case of Co/SiO₂). In particular, the broad feature in the range 0.45 to 0.6 Å⁻¹ (corresponding to Cu Kα diffraction angles of 42° to 54° 2θ) is observed, with a form for the diffracted intensity close to that reported above. No cobalt containing phases other than metallic cobalt are detected in the difference diagram.

Although the case of Co/TiO₂ is not discussed here in detail, the analysis of this catalyst (the conventional XRD pattern is shown in Fig. 13 and the anomalous XRD pattern in Fig. 14) shows that the use of anomalous diffraction allows extraction even of weak signals concealed by strong support diffraction peaks.

Despite increased noise in this pattern (resulting from the strong diffraction intensity and X-ray absorption of the

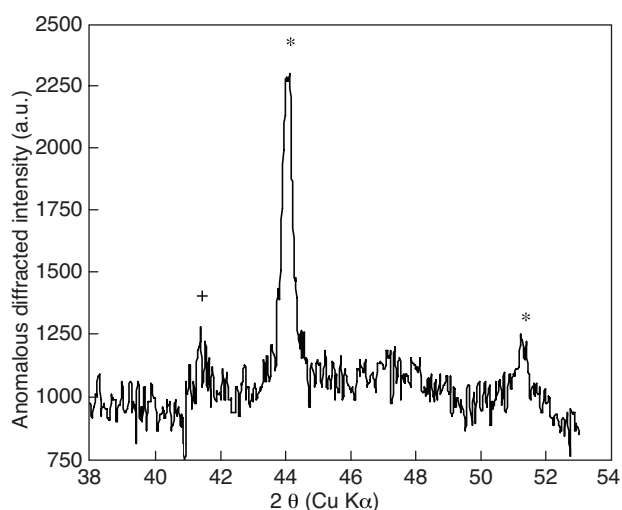


Figure 14

Anomalous diffraction pattern of the reduced Co/TiO₂ catalyst. Symbols represent expected diffraction peak positions (plus signs = hcp cobalt; asterisks = fcc cobalt).

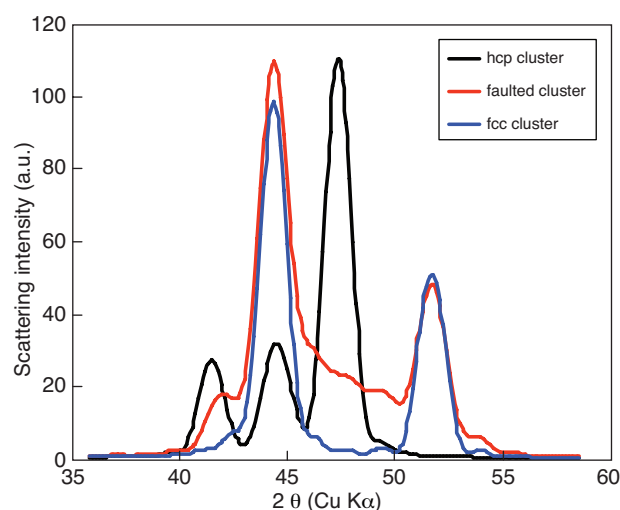


Figure 15

Calculated scattering intensity of a cluster with stacking faults (red curve, see text for details) compared with hcp (black curve) and fcc (blue curve) stacking.

support), a strong contribution is observed in the regions corresponding to fcc peaks, compatible with the observed relatively high reduction temperature for this catalyst (intermediate between Co/SiO₂ and Co/Al₂O₃).

2.5 Modelling the “Cobalt XRD” Diagram

2.5.1 Atomistic Simulation

An example of a defect structure, representing the incursion of two stacking faults near the centre (layers 2 and 5 in the above Fig. 1) of an fcc particle is given in Figure 15. Here, a complex diffraction pattern is observed, with intensity at diffraction positions intermediate between those due to the fcc or hcp structures.

The diagram simulated with stacking fault defects contained inside the particle clearly corresponds more closely to the experimentally observed diagrams than that calculated for independent fcc and hcp contributions. We take this to be an indication that the metallic phase of the supported catalysts is not a mixture of particles that are either fcc or hcp, but rather consists of particles containing several stacking faults. One advantage of this direct simulation approach is that the «real» particle size is taken explicitly into account. For the particle size chosen for these simulations, the width of the features in the calculated diffraction pattern corresponds well to that observed in the experimental Co/SiO₂ diagram. The computation time required to calculate diagrams for a large number of structures unfortunately prevents further optimising the number and position of the stacking faults, which would be necessary to obtain a quantitative agreement between simulated and observed diagrams.

2.5.2 Statistical Simulation

A large number of configurations for stacking fault densities can be rapidly explored using the DIFFAX software. For the Co/SiO₂ catalyst, a simulated diagram corresponding closely to the observed pattern was obtained (Fig. 16) by choosing a probability of 40% that a plane of fcc stacking is followed by hcp stacking and a probability of 10% that a plane of hcp stacking is followed by fcc stacking.

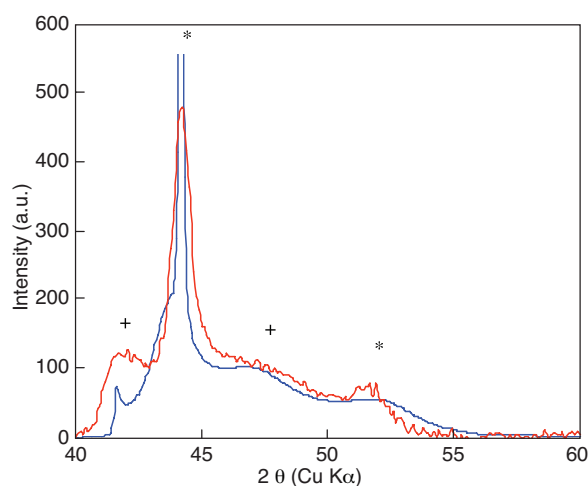


Figure 16

Comparison of the anomalous diffraction pattern of the reduced Co/SiO₂ catalyst and the simulated pattern for defect probabilities of 40% fcc → hcp stacking and 10% hcp → fcc stacking. Symbols represent expected diffraction peak positions (plus signs = hcp cobalt; asterisks = fcc cobalt).

Here (contrary to the atomistic simulation) the features in the calculated pattern are somewhat sharper than in the experimental diagram. This is because, in the DIFFAX simulation, line broadening is uniquely due to the presence of stacking faults. Particle size effects are not taken into account. Convoluting the simulation with an appropriate smoothing function could be used to imitate the particle size effect but has not been carried out here.

The substantial probability (40%) of an fcc to hcp transition confirms that the particle structure is a complex succession of fcc and hcp stacking. Again, the simulation of XRD diagrams leads to the conclusion that the metallic phase of the supported catalysts is not a mixture of single phase particles, but rather a defective structure, containing a high density of stacking faults.

2.6 Effect of CO – H₂ Treatments on Cobalt Microstructure

Treatment under pure CO at 230°C leads to the formation of the carbide phase Co₂C. The degree to which the metallic cobalt is transformed depends on the initial structure (Fig. 17): the low reduction temperature catalysts showing higher diffraction intensity in the region of the Co hcp structure show only carbide peaks after treatment, whereas for the high reduction temperature Co/Al₂O₃ catalyst significant intensity corresponding to the Co fcc phase remains. The transformation of Co fcc phase to carbide thus appears to be more difficult.

Subsequent treatment of the catalysts under hydrogen at 230°C leads to decomposition of the carbide phase to the

metal (shown in Fig. 18). It is remarkable that the crystalline phase resulting from this low temperature decomposition of the carbide is hexagonal close packed. For the Co/SiO₂ catalyst after carbide formation and decomposition the diffraction diagram is simplified compared to the original reduced catalyst, and the peak positions and intensities are consistent with the presence of only the Co hcp phase. The microstructure of the catalyst particles has thus been modified. For Co/Al₂O₃ the Co fcc contribution which remained after the treatment under CO is still observed after decomposition of the carbide. Structural modification occurs also in this case however, as a major contribution in the region of the Co hcp peaks is observed, whereas the original reduced catalyst showed essentially fcc stacking.

2.7 Effect of Structure on Fischer-Tropsch Activity

In the above, promoted and unpromoted catalysts on different supports are compared. It is clear that low reduction temperatures lead preferentially to formation of the hcp structure whereas high reduction temperatures correspond to increased fcc contributions. It is our aim to explore a possible relationship between these variations in microstructure and changes in catalytic activity. However, although the nature of the metal – support interaction is not entirely elucidated, it is generally considered to have an effect on the catalytic activity. In addition, variation of particle size in the above examples cannot be excluded, size measurement by DRX analysis being difficult here due to the complexity of the diffraction pattern. Particle size is known to influence reduction temperature [22] which in turn may induce variations in

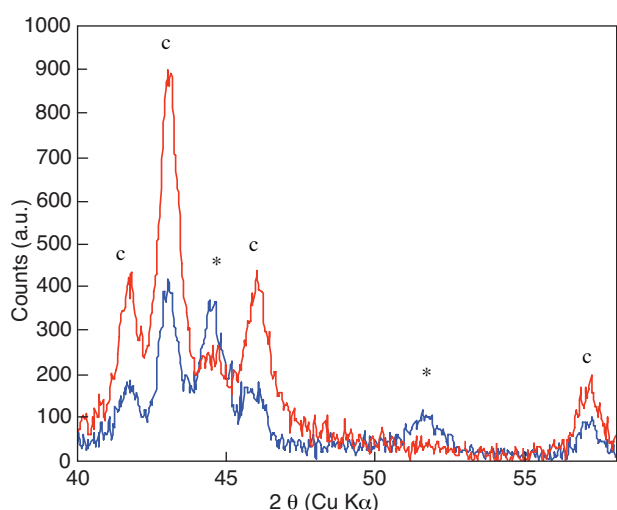


Figure 17

Diffraction patterns of catalysts reduced and treated for 15 h at 230°C under CO: Co/SiO₂ (red curve) and Co/Al₂O₃ (blue curve, alumina support subtracted). Symbols represent expected diffraction peak positions (c = cobalt carbide; asterisks = fcc cobalt).

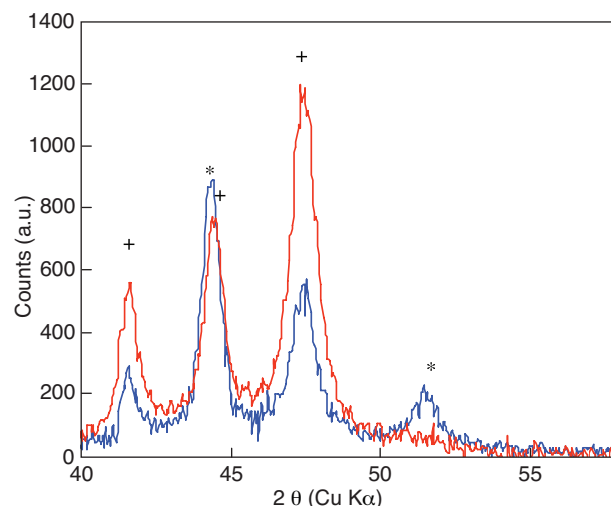


Figure 18

Diffraction patterns of catalysts reduced, carbided and re-reduced at 230°C under hydrogen: Co/SiO₂ (red curve) and Co/Al₂O₃ (blue curve, alumina support subtracted). Symbols represent expected diffraction peak positions (plus signs = hcp cobalt; asterisks = fcc cobalt).

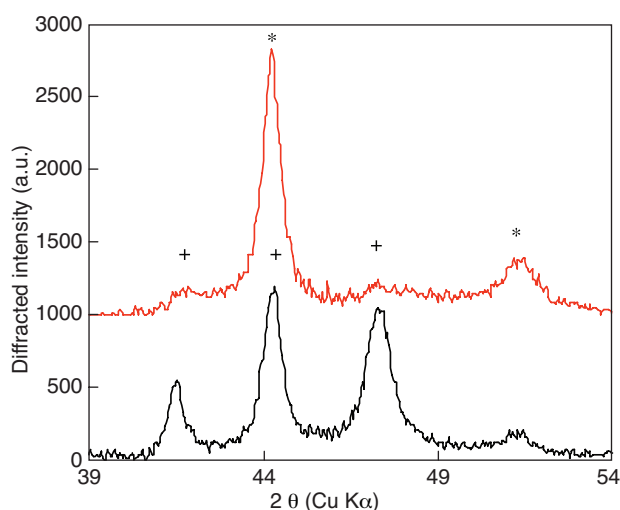


Figure 19

Diffraction patterns of the $\text{Co}/\text{Al}_2\text{O}_3$ catalyst, with support diffraction pattern subtracted, after reduction (red curve, offset for clarity) and after carbide formation and decomposition (black curve). Symbols represent expected diffraction peak positions (plus signs = hcp cobalt; asterisks = fcc cobalt).

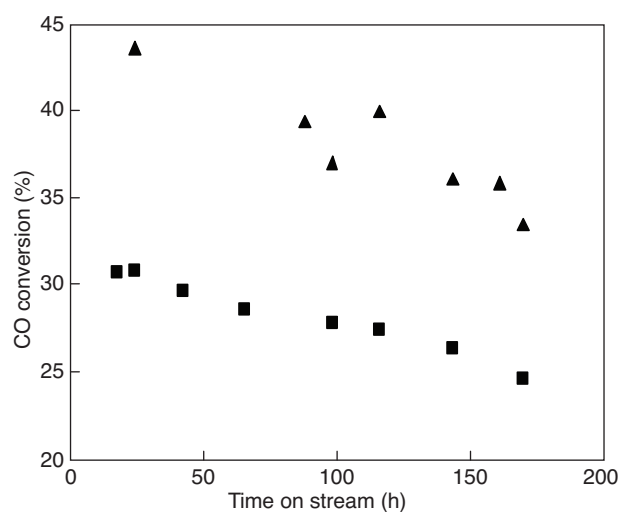


Figure 20

Activity of the $\text{Co}/\text{Al}_2\text{O}_3$ catalyst, activated by reduction (fcc structure, squares) and by carbide formation and decomposition (hcp structure, triangles).

microstructure. In order to study the effect of particle microstructure on activity, it is thus necessary to eliminate or limit the extent of these effects. The results of the previous sections enable us to develop a protocol to modify the microstructure of the metallic phase of Fischer-Tropsch catalysts without changing the support or degree of promotion.

Catalysts that have been treated successively under CO and hydrogen have a high proportion of Co hcp stacking, in contrast to the original reduced catalysts, where the type of stacking is a consequence of the reduction temperature and is thus indirectly dependant on the type of support or the presence of a promoter.

Figure 19 compares the XRD patterns for $\text{Co}/\text{Al}_2\text{O}_3$ after reduction (the catalyst has essentially Co fcc structure with a small proportion of Co hcp stacking) and after carbide formation and decomposition (where the reverse is true).

The activity of the two catalysts was followed over several days in the modified Anton Parr XRD/reaction chamber via measurement of CO conversion under the conditions detailed above (Fig. 20). A slow deactivation of the catalysts was observed over the period, but the catalyst having mainly Co hcp stacking maintained a conversion rate 50% higher than the catalyst having mainly Co fcc stacking. Major products were identified by gas analysis as C_1 (42% of total products) $\text{C}_2 - \text{C}_4$ (28%) and C_5+ (29%) paraffin fractions, with no significant difference in selectivity between the two catalysts.

In order to compare meaningfully the activity of the catalysts, it is important to determine the dispersion, or accessible fraction of the cobalt atoms. The fraction of cobalt exposed to the surface is frequently determined from the particle size, measured using the width of the diffraction peaks. In our

case, because of the presence of stacking faults, the peak width does not truly reflect the particle size, but rather the size of the coherent crystalline domains. The accessible cobalt fraction was thus determined by oxygen titration.

After reduction at 550°C (or after carbide decomposition at 550°C), the catalyst samples were flushed in flowing He then the temperature was decreased to 20°C . A series of pulses of oxygen in the He carrier gas were then passed through the catalyst bed, and the number of moles of oxygen consumed by the samples was calculated from the known pulse volume and the number of pulses reacting with the sample. The number of moles of cobalt reduced was calculated by assuming metal Co was converted to Co_3O_4 . The ratio of this quantity to the total number of moles of cobalt (calculated from the sample mass and cobalt content) gives the accessible metallic cobalt fraction. Values for the accessible metallic cobalt fraction were $8.8 (\pm 0.4)\%$, for the reduced catalyst and $9.6 (\pm 0.4)\%$ for the catalyst after carbide formation and decomposition. Given the estimated experimental error of the oxygen titration measurements, the values for the accessible metallic cobalt fraction are close and do not allow the large difference in activity to be attributed to a change in dispersion.

A short catalytic test carried out just after a treatment under CO (formation of the carbide phase) confirmed, in agreement with the literature [24, 25], that the carbide is not highly active in Fischer-Tropsch synthesis.

Catalytic tests were also carried out on the $\text{Co-Ru}/\text{SiO}_2$ catalyst. As the reduced catalyst in this case has a large proportion of Co hcp stacking, a novel treatment was necessary in order to increase the fcc content. From the arguments put

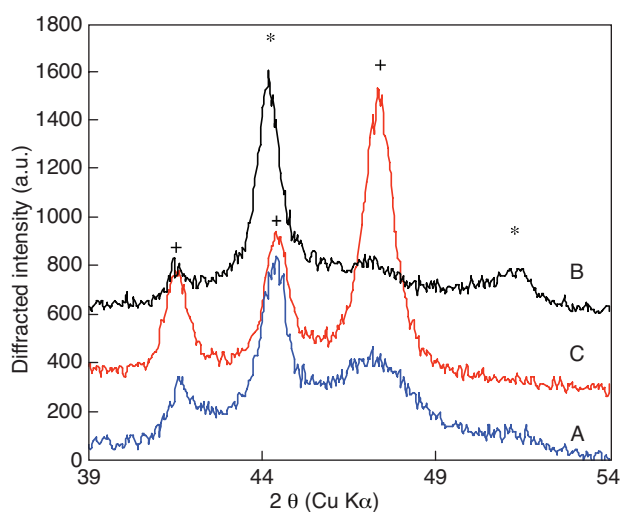


Figure 21

Diffraction patterns of the Co-Ru/SiO₂ catalyst, activated by reduction (Test A: mixed fcc-hcp structure, blue curve), by high temperature inert gas treatment followed by direct high temperature reduction (Test B: fcc structure, black curve) and by carbide formation and decomposition (Test C: hcp structure, red curve). Symbols represent expected diffraction peak positions (plus signs = hcp cobalt; asterisks = fcc cobalt).

forward in the preceding sections, a reduction at high temperature was considered necessary to achieve this. It was found that increasing the temperature under a flow of inert gas led to a partial reduction of the Co₃O₄ to CoO, with no formation of a metallic phase up to 500°C. By switching the flow of gas to pure hydrogen at this temperature, the catalyst was then reduced to form a phase giving an XRD diagram similar to the reduced Co/SiO₂; *i.e.* with a significant proportion of Co fcc stacking. Although the effect of varying the treatment conditions under inert gas before reduction has not been studied in detail, it appears that a reduction at high temperature of the intermediate cubic oxide structure CoO does indeed lead preferentially to the formation of Co fcc stacking. CO conversion was then compared in three catalytic tests:

- test A: Co-Ru/SiO₂ catalyst reduced by increasing the temperature at 10°C/min under hydrogen to 500°C;
- test B: Co-Ru/SiO₂ catalyst enriched in Co fcc stacking as described above;
- test C: Co-Ru/SiO₂ catalyst after reduction, carbide formation and decomposition.

XRD analysis at the start of each test is shown in Figure 21. While Test A investigates the activity of the complex defect phase described in preceding sections, Test B measures the impact of enhanced Co fcc stacking while Test C measures the impact of enhanced Co hcp stacking. The observed catalytic activities (*Fig. 22*) strikingly confirm the tests for Co/Al₂O₃: the higher the proportion of Co hcp stacking, the higher the CO conversion rate. Here, the activity of the catalyst most enriched in Co hcp stacking is three times that of the catalyst

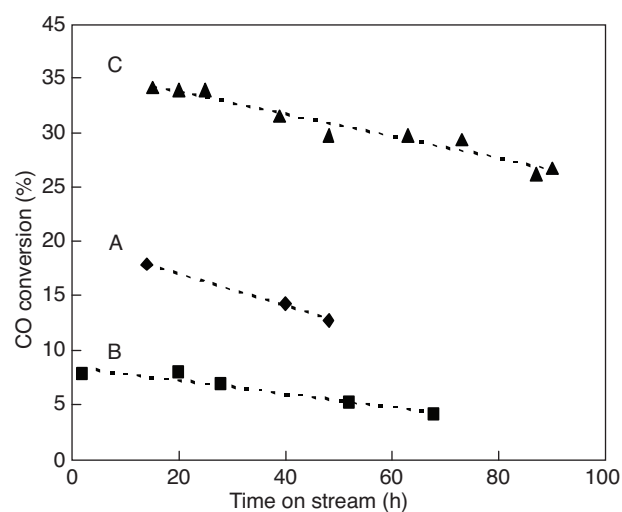


Figure 22

Activity of the Co-Ru/SiO₂ catalyst, activated by reduction (Test A: mixed fcc-hcp structure, diamonds), by high temperature inert gas treatment followed by direct high temperature reduction (Test B: fcc structure, squares) and by carbide formation and decomposition (Test C: hcp structure, triangles). Dotted lines are a guide to the eye.

most enriched in Co fcc stacking. Again, a slow deactivation of these catalysts was observed over the test period.

3 DISCUSSION

We have shown by XRD diagram subtraction and confirmed by anomalous XRD that the broad diffraction intensity observed in reduced supported cobalt catalysts is due to the complex structure of the cobalt particles. Both atomistic simulation (calculation from the Debye equation) and statistical simulation (using DIFFAX software) confirm that this structure consists of a defect phase characterised by a high density of stacking faults. Each simulation method however has limitations in obtaining a quantitative description.

The hcp structure is the low temperature form of cobalt, as confirmed by the *in-situ* diffraction analysis of the reduction of the bulk oxide. The comparison of the Co-Ru/SiO₂, Co/SiO₂, and Co/Al₂O₃ catalysts shows a trend which is thus coherent with the temperatures at which the cobalt is seen by TPR to be reduced. The Co-Ru/SiO₂ catalyst, which shows a first peak of cobalt reduction at 200°C, has a higher diffracted intensity in the regions expected for the hcp structure compared with Co/SiO₂ (whose first reduction peak is at 290°C). The Co/Al₂O₃ catalyst, showing a first reduction peak at 380°C, is essentially of fcc structure.

Further work would be needed to quantify the effect, but one would indeed expect that the probability of maintaining a hcp stacking would be higher if the structure is formed at

lower temperature, whereas the probability of a transition to an fcc stacking would increase if the particles are formed at high temperature.

Preliminary results, suggesting that increasing the temperature under an inert gas followed by immediate reduction at high temperature under hydrogen leads to selective formation of the Co fcc phase, are also coherent with the proposition that the reduction temperature directly determines the microstructure of supported cobalt catalysts, whereas the effects of support and promoter are indirect consequences of this general rule.

Formation of the cobalt carbide phase followed by its decomposition to metallic cobalt has been shown here to lead to an increase in the proportion of hcp stacking. Structural data for the two cobalt phases (fcc and hcp) as well as for the carbide are given in Table 2. The structures of hexagonal (hcp) and cubic (fcc) cobalt contain identical planes in which the cobalt atoms are at a distance of 2.50 Å from their six first neighbours. Only the stacking sequence is different, being ABCABC for cubic (fcc) cobalt and ABAB for hexagonal (hcp) cobalt. In the Co₂C structure, the cobalt atoms of the 010 planes present the same hexagonal arrangement, with Co-Co distances slightly larger (2.654 Å). The stacking sequence is ABAB (see Fig. 23).

We propose that, due to the similarities of cobalt carbide and hcp cobalt structures, the carbide transforms preferentially to the metallic cobalt structure which has the same ABAB stacking of the atomic planes. Thus, after decomposition of carbide under hydrogen, most of the metal formed is of hcp type.

It is possible the structure influences the diffusion of carbon into the metal. Carbon diffusion would be expected to be facilitated for the hcp stacking where a local carbide structure can be produced. This could explain the observation that the catalysts containing a large amount of hcp Co produce more carbide upon exposition to CO than those reduced at high temperature and mostly of fcc type.

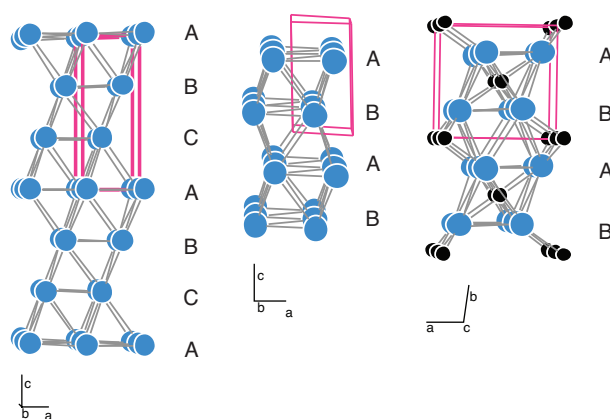


Figure 23

Structural representation of fcc Co (left), hcp Co (center) and Co₂C (right).

The easier insertion of carbon into the hcp Co could also be at the origin of the higher activity of this structural type of cobalt in the Fischer-Tropsch reaction. Indeed, surface carbide or sorbed carbon issued from the dissociation of CO at the surface of the catalyst has been proposed as an intermediate in the formation of the hydrocarbon chains [26]. Difficult insertion of carbon in fcc cobalt phase would be in line with a lower activity observed for this structure.

CONCLUSION

In order to study in detail the structure of metallic catalyst particles, subtraction of an XRD diagram of the support alone is a simple and effective method for removing the diffraction signal due to the support, in cases where the support is not strongly crystallised and is not modified during the catalyst preparation. In our case, anomalous X-ray diffraction confirmed the validity of the approach.

TABLE 2
Structural data for fcc Co, hcp Co, and Co₂C

		fcc Co	fcc Co in pseudo hexagonal cell	hcp Co	Co ₂ C
Space group		Fm3m (225)	P1	P6 ₃ /mmc (194)	Pnnm (58)
Cell parameters		a = 3.545 Å	a = 2.507 Å c = 6.1401 Å γ = 120°	a = 2.503 Å c = 4.061 Å γ = 120°	a = 4.446 Å b = 4.371 Å c = 2.897 Å
Wyckoff	Co	1a	4g	2c	4g
	C	–	–	–	2a
x, y, z	Co	1/3, 2/3, 1/3 2/3, 1/3, 2/3 0, 0, 0	0, 0, 0	1/3, 2/3, 1/4	0.653, 0.742, 0
	C	–	–	–	0, 0, 0

The structure of supported metallic cobalt particles has been shown to be complex, consisting of a defect phase characterised by a high density of stacking faults. The degree to which defects are present has been shown to be related to the temperature at which the cobalt oxide is reduced to metallic cobalt. For low reduction temperatures the structure is close to hexagonal close packed, the stable phase at low temperature for bulk cobalt. Introduction of stacking faults leads to the presence of a significant amount of face centred cubic stacking in catalyst particles, even when the reduction of cobalt occurs at relatively low temperatures compared to the bulk metal transition temperature. High temperature reduction, whether induced by the nature of the support or by the reduction protocol, leads preferentially to fcc stacking.

Structural modification of the supported cobalt particles can be achieved via carbide formation under CO and its decomposition under hydrogen. The Co hcp structure has been shown to transform to carbide more easily than the Co fcc structure. More importantly, the decomposition of Co_2C has been shown to lead to the selective formation of the Co hcp phase. As carbide decomposition takes place at relatively low temperatures, selective Co hcp formation is coherent with the observation that the temperature at which the metallic particles are formed directly determines the resulting microstructure.

Furthermore, observation of the Co_2C structure shows that the cobalt atoms in the carbide are located on hexagonal planes similar to those of the metallic phases, and the stacking sequence is the same as in the Co hcp phase (ABAB), which could explain an easier path from one phase to the other.

Catalytic tests under representative Fischer-Tropsch conditions maintaining the same support, and promoter effects, with similar particle size, show that the presence of a majority of Co hcp stacking is beneficial to CO conversion, whereas increasing the proportion of Co fcc stacking has a prejudicial effect on catalyst activity.

Although cobalt carbide is not an active phase in Fischer-Tropsch synthesis, we can speculate that the facile formation of carbide from the hcp structure and decomposition of the carbide to hcp cobalt may be at the origin of this effect, perhaps facilitating the insertion of carbon atoms (from CO decomposition) and their extraction (on hydrocarbon formation) in the surface layer of the working catalyst.

These results thus point to possible future study both to improve the understanding of the role of «surface carbon» in the mechanism of Fischer-Tropsch catalysis and for the development of more active catalysts.

ACKNOWLEDGMENTS

The authors are indebted to C. Verdon and P. Chaumette of IFP, and M. Gailhanou at LURE for help in the experimental work. Financial support was provided from the European "PARSEC" project CJ J0F3-CT95 0016 and the Chemistry Department of the CNRS.

REFERENCES

- 1 Dry M.E. (2002) The Fischer-Tropsch process: 1950-2000, *Catal. Today* **71**, 227.
- 2 Khodakov A.Y., Chu W., Fongarland P. (2007) Advances in the development of novel cobalt Fischer-Tropsch catalysts for synthesis of long-chain hydrocarbons and clean fuels, *Chem. Rev.* **107**, 1692-1744.
- 3 Storsæter S., Tøtdal B., Walmsley J.C., Tanem B.S., Holmen A. (2005) Characterization of alumina-, silica-, and titania-supported cobalt Fischer-Tropsch catalysts, *J. Catal.* **236**, 139.
- 4 Concepción P., López C., Martínez A., Puentes V.F. (2004) Characterization and catalytic properties of cobalt supported on delaminated ITQ-6 and ITQ-2 zeolites for the Fischer-Tropsch synthesis reaction, *J. Catal.* **228**, 321.
- 5 Liu Y., Chen J., Fang K., Wang Y., Sun Y. (2007) A large pore-size mesoporous zirconia supported cobalt catalyst with good performance in Fischer-Tropsch synthesis, *Catal. Commun.* **8**, 945.
- 6 Martínez A., López C., Márquez F., Díaz I. (2003) Fischer-Tropsch synthesis of hydrocarbons over mesoporous Co/SBA-15 catalysts: the influence of metal loading, cobalt precursor, and promoters, *J. Catal.* **220**, 486.
- 7 Kraum M., Baerns M. (1999) Fischer-Tropsch synthesis: the influence of various cobalt compounds applied in the preparation of supported cobalt catalysts on their performance, *Appl. Catal. A-Gen.* **186**, 189.
- 8 Xu D., Li W., Duan H., Ge Q., Xu H. (2005) Reaction performance and characterization of $\text{Co}/\text{Al}_2\text{O}_3$ Fischer-Tropsch catalysts promoted with Pt, Pd and Ru, *Catal. Lett.* **102**, 229.
- 9 Zhang J., Chen J., Ren J., Sun Y. (2003) Chemical treatment of $\gamma\text{-Al}_2\text{O}_3$ and its influence on the properties of Co-based catalysts for Fischer-Tropsch synthesis, *Appl. Catal. A-Gen.* **243**, 121.
- 10 Chernavskii P.A., Khodakov A.Y., Pankina G.V., Girardon J.-S., Quinet E. (2006) *In situ* characterization of the genesis of cobalt metal particles in silica- supported Fischer-Tropsch catalysts using Foner magnetic method, *Appl. Catal. A-Gen.* **306**, 108-119.
- 11 de la Pena O'Shea V.A., Homs N., Fierro J.L.G., Ramirez de la Piscina P. (2006) Structural changes and activation treatment in a Co/SiO_2 catalyst for Fischer-Tropsch synthesis, *Catal. Today* **114**, 422-427.
- 12 Elbashir N.O., Dutta P., Manivannan A., Seehra M.S., Roberts C.B. (2005) Impact of cobalt-based catalyst characteristics on the performance of conventional gas-phase and supercritical-phase Fischer-Tropsch synthesis, *Appl. Catal.* **285**, 169-180.
- 13 Enache D., Rebours B., Roy-Auberger M., Revel R. (2002) *In Situ* XRD Study of the Influence of Thermal Treatment on the Characteristics and the Catalytic Properties of Cobalt-Based Fischer-Tropsch Catalysts, *J. Catal.* **205**, 346-353.
- 14 Srinivasan R., De Angelis R.J., Reucroft P.J., Dhare A.G., Bentley J. (1989) Structural characterization of cobalt catalysts on a silica support, *J. Catal.* **116**, 144-163.
- 15 Bezemer G.L., Radstake P.B., Koot V., van Dillen A.J., Geus J.W., de Jong K.P. (2006) Preparation of Fischer-Tropsch cobalt catalysts supported on carbon nanofibers and silica using homogeneous deposition – precipitation, *J. Catal.* **237**, 291-302.

- 16 Kala S., Mehta B.R. (2007) Size-dependent structural, optical and hydrogenation properties of Pr nanoparticle layers, *J. Alloy. Compd.* **431**, 10-15.
- 17 Gailhanou M., Dubuisson J.M., Ribbens M., Roussier L., Bétaille D., Créoff M., Lemonnier M., Denoyer J., Bouillot C., Jucha A., Lena A., Idir M., Bessière M., Thiaudière D., Hennem L., Landron C., Coutures J.P. (2001) H10: A materials and high temperature beamline at LURE/DCI, *NIM B* **467-468**, 745.
- 18 Ducreux O., Lynch J., Rebours B., Roy M., Chaumette P. (1998) *In situ* characterisation of cobalt base Fischer-Tropsch catalysts: a new approach to the active phase, *Stud. Surf. Sci. Catal.* **119**, 125-130.
- 19 Longo A., Martorana A. (2008) Distorted f.c.c. arrangement of gold nanoclusters: a model of spherical particles with microstrains and stacking faults, *J. Appl. Cryst.* **41**, 446.
- 20 Sasaki S. (1983) KEK Report 83-82, Nat. Lab. for High Energy Physics, Tsukuba, Japan.
- 21 Treacy M.M.J., Newsam J.M., Deem M.W. (1991) A General Recursion Method for Calculating Diffracted Intensities from Crystals Containing Planar Faults, *Proc. R. Soc. Lond. A* **443**, 499.
- 22 Khodakov A., Ducreux O., Lynch J., Rebours B., Chaumette P. (1999) Structural Modification of Cobalt Catalysts: Effect of Wetting Studied by X-Ray and Infrared Techniques, *Oil Gas Sci. Technol. – Rev. IFP* **54**, 525-536.
- 23 Khodakov A., Lynch J., Bazin D., Rebours B., Zanier N., Moisson B., Chaumette P. (1997) Reducibility of Cobalt Species in Silica-Supported Fischer-Tropsch Catalysts, *J. Catal.* **168**, 16.
- 24 Weller S., Hofer L.J.E., Anderson R.B. (1948) Role of Bulk Cobalt Carbide in the Fischer-Tropsch Synthesis, *J. Am. Chem. Soc.* **70**, 799-801.
- 25 Jianmin X., Ding, Yunjie D., Tao W., Li Y., Weimiao C., Hejun Z., Yuan L. (2005) The formation of Co₂C species in activated carbon supported cobalt-based catalysts and its impact on Fischer-Tropsch reaction, *Catal. Lett.* **102**, 265-269.
- 26 For a review of the surface carbide mechanism see: van der Laan G., Beenackers A.A.C.M. (1999) Kinetics and Selectivity of the Fischer – Tropsch Synthesis: A Literature Review, *Catal. Rev.* **41**, 255.

Final manuscript received in April 2008
Published online in October 2008

Copyright © 2008 Institut français du pétrole

Permission to make digital or hard copies of part or all of this work for personal or classroom use is granted without fee provided that copies are not made or distributed for profit or commercial advantage and that copies bear this notice and the full citation on the first page. Copyrights for components of this work owned by others than IFP must be honored. Abstracting with credit is permitted. To copy otherwise, to republish, to post on servers, or to redistribute to lists, requires prior specific permission and/or a fee: Request permission from Documentation, Institut français du pétrole, fax. +33 1 47 52 70 78, or revueogst@ifp.fr.