



HAL
open science

Folks in folksonomies: Social link prediction from shared metadata

Rossano Schifanella, Alain Barrat, Ciro Cattuto, Benjamin Markines, Filippo Menczer

► **To cite this version:**

Rossano Schifanella, Alain Barrat, Ciro Cattuto, Benjamin Markines, Filippo Menczer. Folks in folksonomies: Social link prediction from shared metadata. third ACM international conference on Web search and data mining, Feb 2010, New York, United States. pp.271, 10.1145/1718487.1718521 . hal-00429886

HAL Id: hal-00429886

<https://hal.science/hal-00429886>

Submitted on 4 Nov 2009

HAL is a multi-disciplinary open access archive for the deposit and dissemination of scientific research documents, whether they are published or not. The documents may come from teaching and research institutions in France or abroad, or from public or private research centers.

L'archive ouverte pluridisciplinaire **HAL**, est destinée au dépôt et à la diffusion de documents scientifiques de niveau recherche, publiés ou non, émanant des établissements d'enseignement et de recherche français ou étrangers, des laboratoires publics ou privés.

Folks in Folksonomies: Social Link Prediction from Shared Metadata

Rossano Schifanella^{1*}

Alain Barrat^{2,3}

Ciro Cattuto³

Benjamin Markines⁴

Filippo Menczer^{3,4}

¹ Department of Computer Science, University of Turin, Italy

² Centre de Physique Théorique (CNRS UMR 6207), Marseille, France

³ Complex Networks and Systems Laboratory, ISI Foundation, Turin, Italy

⁴ School of Informatics and Computing, Indiana University, Bloomington, IN, USA

ABSTRACT

Web 2.0 applications have attracted a considerable amount of attention because their open-ended nature allows users to create light-weight semantic scaffolding to organize and share content. To date, the interplay of the social and semantic components of social media has been only partially explored. Here we focus on Flickr and Last.fm, two social media systems in which we can relate the tagging activity of the users with an explicit representation of their social network. We show that a substantial level of local lexical and topical alignment is observable among users who lie close to each other in the social network. We introduce a null model that preserves user activity while removing local correlations, allowing us to disentangle the actual local alignment between users from statistical effects due to the assortative mixing of user activity and centrality in the social network. This analysis suggests that users with similar topical interests are more likely to be friends, and therefore semantic similarity measures among users based solely on their annotation metadata should be predictive of social links. We test this hypothesis on the Last.fm data set, confirming that the social network constructed from semantic similarity captures actual friendship more accurately than Last.fm's suggestions based on listening patterns.

Categories and Subject Descriptors

H.1.2 [Information Systems]: Models and Principles—*Human information processing*; H.3.5 [Information Storage and Retrieval]: Online Information Services—*Web-based services*; H.5.3 [Information Interfaces and Presentation]: Group and Organization Interfaces—*Collaborative computing, Web-based interaction*

General Terms

Algorithms, Experimentation, Measurement

*Corresponding author. Email: schifane@di.unito.it. A good portion of the work in this paper was carried out while Dr. Schifanella was a visiting scholar at the Center for Complex Networks and Systems Research (CNetS) of the Indiana University School of Informatics and Computing.

Permission to make digital or hard copies of all or part of this work for personal or classroom use is granted without fee provided that copies are not made or distributed for profit or commercial advantage and that copies bear this notice and the full citation on the first page. To copy otherwise, to republish, to post on servers or to redistribute to lists, requires prior specific permission and/or a fee.

WSDM'10, February 4–6, 2010, New York City, New York, USA.
Copyright 2010 ACM 978-1-60558-889-6/10/02 ...\$10.00.

Keywords

Web 2.0, social media, folksonomies, collaborative tagging, social network, lexical and topical alignment, link prediction, social semantic similarity, Maximum Information Path

1. INTRODUCTION

Social networking systems like Facebook and systems for content organization and sharing such as Flickr and Delicious have created information-rich ecosystems where the cognitive, behavioral and social aspects of a user community are entangled with the underlying technological platform. This opens up new ways to monitor and investigate a variety of processes involving the interaction of users with one another, as well as the interaction of users with the information they process. Social media supporting tagging [14, 3] are especially interesting in this respect because they stimulate users to provide light-weight semantic annotations in the form of freely chosen terms. Usage patterns of tags can be employed to monitor interest, track user attention, and investigate the co-evolution of social and semantic networks.

While the emergence of conventions and shared conceptualizations has attracted considerable interest [24, 16, 25, 2], little attention has been devoted so far to relating, at the microscopic level, the usage of shared tags with the social links existing between users. The present paper aims at filling this gap. To this end we focus on Flickr and Last.fm, as to our knowledge they are currently the only popular social media system where: (1) a significant fraction of the users provide tag metadata for their content (photographs or songs), and (2) an explicit representation of the social links between users is readily available.

The main question that we address in this study is the following: given two randomly chosen users, how does the alignment of their tag vocabularies relate to their proximity on the social network? That is, does lexical alignment exist between neighboring users, and if so, how does this alignment fade when considering users lying at an increasing distance on the social graph? And if indeed such a relationship exists, does it allow us to predict social links from analysis of the semantic similarity among users, extracted from their annotations?

Contributions and outline

The main contributions of this paper are summarized as follows:

- In § 4.1 we show that strong correlations exist across several measures of user activity, and characterize the mixing patterns that involve user activity and user centrality in the social network.

- In § 4.2 we develop sound measures of tag overlap. We further introduce appropriate null models to disentangle the actual local alignment between users from statistical effects due to the mixing properties of user activity and centrality in the social network. We apply these measures to the Flickr and Last.fm data sets. The resulting analysis shows that, despite neither Flickr nor Last.fm support globally-shared tag vocabularies, a substantial level of local lexical (shared tags) and topical (shared groups) alignment is observable among users who are close to each other in the social network. We also find that some observables are more adequate than others to measure lexical and topical alignment, in the sense that they are less sensitive to purely statistical effects.
- In § 5 we inquire if the observed correlations between annotation metadata and social proximity allow to use semantic similarity between user annotations as statistical predictors of friendship links. We evaluate a number of semantic similarity measures from the literature, based on Last.fm metadata. We find that when we consider the annotations of the most active users, almost all of the semantic similarity measures considered outperform the neighbor suggestions from the Last.fm system at predicting actual friendship relations. Scalable semantic similarity measures such as Maximum Information Path, proposed by some of the authors, are among those achieving the best predictive performance.

2. RELATED WORK

One of the first quantitative studies on Flickr is presented by Marlow *et al.* [13], who discuss the heterogeneity of tagging patterns and perform a preliminary analysis of vocabulary overlap between pairs of users. The analysis suggests that users who are linked in the Flickr social network have on average a higher vocabulary overlap, but no assessment is made of biases and other correlations that could be responsible for the reported observation.

The structure and the temporal evolution of the Flickr social network are investigated in several papers [4, 18, 17]. Leskovec *et al.* [6] place a special emphasis on the local mechanisms driving the microscopic evolution of the network.

The role of social contacts in shaping browsing patterns on Flickr has also been explored [5, 26], providing insights into the behavior and activity patterns of Flickr users.

Prieur *et al.* [21] investigate the role of Flickr groups as coordination tools, and explore the relation between the density of the social network and the density of the network of tag co-usage among the group members.

Liben-Nowell and Kleinberg [8] explore several notions of node similarity for link prediction in social networks. In our own prior work we performed a systematic analysis of a broad range of semantic similarity measures based on folksonomies, that can be applied directly to build networks of users, tags, or resources [12, 10, 11]. Here we build upon this evaluation framework.

Li *et al.* [7] propose a system to discover common user interests and cluster users and their saved URLs by different interest topics. They use a Delicious data set to define implicit links between users based on the similarity of their tags. However they do not correlate the interest clusters with social connections.

Perhaps the work that most directly relates to our approach is by Santos-Neto *et al.* [23], who explore the question of whether tag-based or resource-based interest sharing in tagging systems relate to other indicators of social behavior. The authors analyze the CiteULike and Connotea systems, which deal with scientific publication and lack explicit social network components. Therefore they

are unable to directly explore social friendship between two users, and instead look at participation in the same discussion group, with mixed results. They do not find a statistical correlation between the intensity of interest sharing and the collaboration levels. Our present results are both more explicit (we deal with pairs of users rather than groups) and more conclusive. Furthermore we are able to evaluate our interest-based predictions against external suggestions based on independent data, quantifying the applicative value of our findings.

3. DATA SETS

Flickr makes available most of its public data by means of API methods (`flickr.com/api`). The data used for the present study were obtained by using the public Flickr API to perform a distributed crawl of the content uploaded to Flickr between January 2004 and January 2006. The system was crawled during the first half of 2007. The crawling task was distributed by dividing the above interval of time into work units consisting of smaller time windows, and crawling each time window separately. Each crawler was programmed to issue search queries for every known tag, limited to its temporal window of competence, as well as to issue search queries for photos uploaded in the same interval. As new tags were discovered, they were added to a global table shared by all the crawlers. Separate crawls were performed to explore the Flickr social network (in Flickr jargon, the “contacts” of a given user are her nearest neighbors in the social network, as represented in the system), as well as group membership information.

Overall, the data set we analyzed comprises 241,031 users for whom we have tagging information, and 118,144 users for whom we also have group membership information. Our analysis will focus on two networks. The first one, G_0 , comprises the Flickr users for whom we have tag, group and contact information. It consists of 118,144 nodes (users) and 2,263,182 edges (contacts between users). The second network, G_1 , is obtained by extending G_0 to include all the neighbors of its nodes, neighbors for whom we may not have tagging, group membership, or complete contact information. G_1 comprises 983,778 nodes and 16,673,476 edges and will be used to check the robustness of analyses involving the distance among users in the Flickr social network.

Similarly, we constructed our Last.fm data set using public API methods (`last.fm/api`), in particular for collecting neighbor and friend relations. In Last.fm jargon, friends are contacts in the social networks, while neighbors are users recommended by the system as potential contacts, based on their music playing histories. Last.fm also allows users to annotate various items (songs, artists, or albums) with tags. However, the Last.fm API does not allow to retrieve the complete user annotation activity. Therefore, with permission, we developed a crawler that extracts all the triples (*user, item, tag*) and group membership information by visiting and parsing user profile web pages. The crawls took place over a period of a few months in the first half of 2009. The resulting data set comprises of 99,405 users, of which 52,452 are active, i.e., have at least one annotation. The 10,936,545 triples annotate 1,393,559 items with 281,818 tags. The users belong to 66,429 groups.

No filters were applied to our data set collections.

4. DATA ANALYSIS

In this section we present an analysis of the data. The very same analysis was carried out for both Flickr and Last.fm data sets. However, due to space limitations, we report below mainly on the results of the Flickr analysis. Unless otherwise specified our analysis refers to G_0 but we checked that the results do not change for

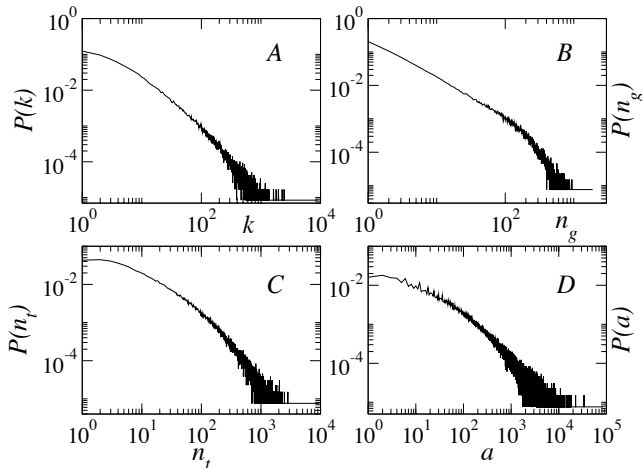


Figure 1: Flickr distributions of (A) the number k of neighbors of a user, (B) the number n_g of groups of which a user is a member, (C) the number n_t of distinct tags per user, and (D) the number a of tag assignments per user.

Table 1: Averages and fluctuations of Flickr user activity

Measure of activity x	Average $\langle x \rangle$	$\langle x^2 \rangle / \langle x \rangle$
k	38.3	469
n_t	85.3	511.4
n_g	32.6	184.6
a	690.7	8471.3

G_1 . The analysis of Last.fm yielded analogous results, both qualitatively and quantitatively. Therefore we believe our conclusions to be robust.

4.1 Heterogeneity and correlations

Let us first focus on the activity of users as measured by a number of indicators, and investigate the correlations between these indicators. The activity of a Flickr user has indeed various aspects, among which the most important are uploading photos, tagging them, participating in groups, commenting on other users' photos, and other social networking activities. Fig. 1 displays the probability distributions of the number k of neighbors in the social network (the degree k of a node), and the probability of finding a user with a given number n_t of distinct tags in her vocabulary. The breadth of a user's tag vocabulary can be regarded as a proxy for the breadth of her interests. We also show in Fig. 1 the distribution of the number of groups n_g to which a user belongs, and of the total number a of tags assignments submitted by a user (in this case, a tag used twice by a user is counted twice). More precisely, if $f_u(t)$ is the number of times that a tag t has been used by user u , then the total number of tag assignments of user u is $a_u = \sum_t f_u(t)$. All these distributions are broad, showing that the activity patterns of users are highly heterogeneous. For reference, Table 1 reports the averages and variances of these quantities.

A few comments are in order. First, in our analysis we do not consider one obvious measure of activity, namely the number of photos uploaded by a user. One reason for this is that the number of photos posted by a user is known to be strongly correlated with the number of tags from the same user [13]. More importantly, Flickr is a "narrow folksonomy" in which users tend to tag mostly their own content [28]. Thus, when exploring the similarity of users and relating it to the underlying social network, shared usage of tags

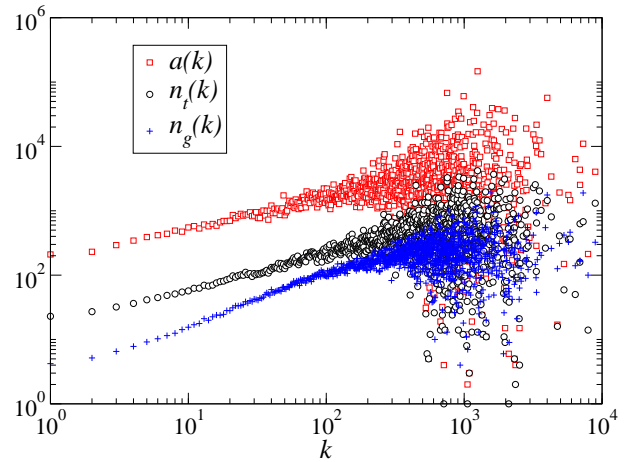


Figure 2: Average number of distinct tags (n_t), of groups (n_g), and of tag assignments (a) of users having k neighbors in the Flickr social network.

and co-membership in groups are natural and more direct indicators of shared interests. Another note concerns the comparison with the study by Mislove *et al.* [18], who reported a smaller average degree for the Flickr social network. This difference is due to the fact that in our study we focus on those users who use both tags and groups. Since only 21% of the users participate in groups [18], this means that here we are focusing on the "active" users. As we will see below, the various activity metrics are correlated with one another, so users who are more active in terms of tags and groups will tend to have more contacts in the Flickr social network, hence the higher average degree we report here. Fig. 1, however, clearly shows that even within this "active" set of users, very broad distributions of activity patterns are observed and no "typical" value of the activity metrics can be defined.

It seems natural to ask whether the different types of activity measures are correlated with one another and with the structure of the social network: are users with more social links also more active in tagging their content, and do they participate in more groups? As shown in Fig. 2, the data show that this is indeed the case (see also Ref. [13]). Fig. 2 displays the average activity of users with k neighbors in the social network, as measured by the various metrics defined above. For instance,

$$n_t(k) = \frac{1}{|u : k_u = k|} \sum_{u: k_u = k} n_t(u).$$

All types of activity have an increasing trend for increasing values of k , and of course strong fluctuations are present at all values of k . The strong fluctuations visible for large k values are due to the fewer highly-connected nodes over which the averages are performed. Notably, users with a large number of social contacts but using very few tags and belonging to very few groups can be observed. Despite these important heterogeneities in the behavior of users with the same degree k , the data clearly indicate a strong correlation between the different types of activity metrics. The Pearson correlation coefficients are: 0.349 between k and n_t , 0.482 between k and n_g , 0.268 between k and a , 0.429 between n_t and n_g , 0.753 between n_t and a , 0.304 between n_g and a .

Another important question concerns the correlations between the activity metrics of users who are linked in the Flickr social network. This is a well-known problem in the social sciences, ecology, and epidemiology: a typical pattern, referred to as "assortative mixing," describes the tendency of nodes of a network (here, the users)

to link to other nodes with similar properties. This appears intuitive in the context of a social network, where one expects individuals to connect preferentially with other individuals sharing the same interests. Likewise, it is possible to define a “disassortative mixing” pattern if the elements of the network tend to link to nodes that have different properties or attributes. Mixing patterns can be defined with respect to any property of the nodes [19]. In the present case, we characterize the mixing patterns concerning the various activity metrics.

In the case of large scale networks, the most commonly investigated mixing pattern involves the degree (number of neighbors) of nodes. This type of mixing refers to the likelihood that users with a given number of neighbors connect with users with similar degree. To this end, a commonly used measure is given by the average nearest neighbors degree of a user u ,

$$k_{nn}^u = \frac{1}{k_u} \sum_{v \in \mathcal{V}(u)} k_v,$$

where the sum runs over the set $\mathcal{V}(u)$ of nearest neighbors of u . To characterize mixing patterns in the degree of nodes, a convenient measure can be built on top of k_{nn}^u by averaging over all nodes u that have a given degree k [20, 27]:

$$k_{nn}(k) = \frac{1}{|u : k_u = k|} \sum_{u: k_u = k} k_{nn}^u. \quad (1)$$

In the case of Flickr, each user is endowed with several properties characterizing its activity. It is thus interesting to characterize the mixing patterns with respect to all of those properties. To this end, we generalize the average nearest neighbors degree presented above, and define for each user u the following quantities: (i) the average number of tags of its nearest neighbors,

$$n_{t,nn}^u = \frac{1}{k_u} \sum_{v \in \mathcal{V}(u)} n_t(v),$$

(ii) the average total number of tags used by its nearest neighbors,

$$a_{nn}^u = \frac{1}{k_u} \sum_{v \in \mathcal{V}(u)} a(v),$$

and (iii) the average number of groups to which its nearest neighbors participate,

$$n_{g,nn}^u = \frac{1}{k_u} \sum_{v \in \mathcal{V}(u)} n_g(v).$$

To detect the mixing patterns, in complete analogy with the case of $k_{nn}(k)$, we compute the average number of distinct tags of the nearest neighbors *for the class of users having n_t distinct tags*:

$$n_{t,nn}(n) = \frac{1}{|u : n_t(u) = n|} \sum_{u: n_t(u) = n} n_{t,nn}^u, \quad (2)$$

the average total number of tags used by the nearest neighbors *for the class of users with a tag assignments*:

$$a_{nn}(a) = \frac{1}{|u : a(u) = a|} \sum_{u: a(u) = a} a_{nn}^u, \quad (3)$$

and the average number of groups of the nearest neighbors *for the class of users who are members of n_g groups*:

$$n_{g,nn}(n) = \frac{1}{|u : n_g(u) = n|} \sum_{u: n_g(u) = n} n_{g,nn}^u. \quad (4)$$

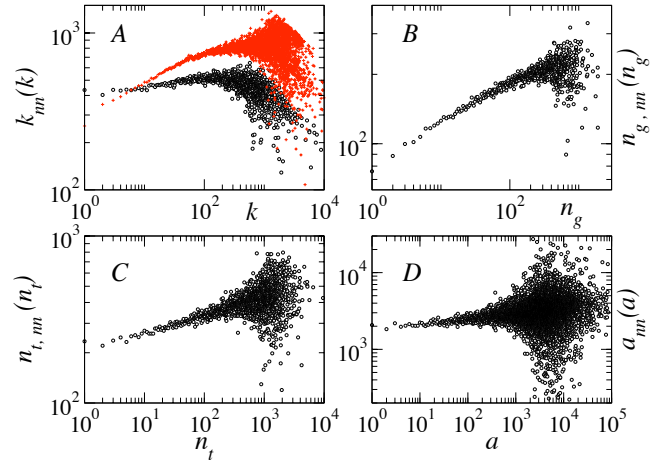


Figure 3: (A) Average degree of the nearest neighbors of nodes of degree k , computed for G_0 (black circles) G_1 (red crosses) Flickr networks. (B) Average number of groups for the nearest neighbors of nodes belonging to n_g groups. (C) Average number of tags for the nearest neighbors of nodes with n_t tags. (D) Average total number of tag assignments for the nearest neighbors of nodes with a tag assignments. In all cases a clear assortative trend is observed.

Fig. 3 displays the quantities of Eqs. 1–4 for the Flickr data set. In all cases, a clear assortative trend is visible: the average activity of the neighbors of a user increases with the user’s own activity, for all the activity measures we computed. Note that for the degree mixing patterns, the assortative trend is even enhanced when G_1 is considered instead of G_0 . Large fluctuations are observed for large activity values, because of the small number of very active users. We remark that while Mislove *et al.* [18] had already found an assortative trend with respect to the degree of the social network, Fig. 3 highlights that the activities of socially connected users are correlated at all levels.

4.2 Lexical and topical alignment

In this section we analyze more in detail the similarity of user profiles in relation to their social distance. More precisely, the previous section was devoted to the correlations between the *intensity* of user activities, as quantified by several metrics. We now focus on the *similarity* between user profiles as measured by the similarity of their respective tag vocabularies, and by the similarity of the set of groups they belong to.

As mentioned above, Flickr is a “narrow folksonomy” [28]: tag annotations are provided mostly by the content creator, i.e., the tags associated with a photo are typically provided by the user who posted that photo. Intuitively, the absence of shared content, together with the very personal character of both the content and the tag metadata, make the Flickr tag vocabulary extremely incoherent across the user community. Conversely, social bookmarking systems like Delicious allow multiple users to annotate the same resource and one could argue that the browsing experience exposes users to the global tag vocabulary and fosters — at least in principle — imitative or cooperative processes leading to the emergence of global conventions in the user community [14].

In light of the above observations, we do not expect to observe a globally shared tag vocabulary in the Flickr community. A simple test for the existence of such a globally shared vocabulary can be performed by selecting pairs of users at random and measuring the number of tags they share, n_{st} . It turns out that the average number

Table 2: Tags most frequently used by three Flickr users

User A	User B	User C
green	flower	japan
red	green	tokyo
catchycolors	kitchen	architecture
flower	red	bw
blue	blue	setagaya
yellow	white	reject
catchycolors	fave	sunset
travel	detail	subway
london	closeupfilter	steel
pink	metal	geometry
orange	yellow	foundart
macro	zoo	canvas

of shared tags is only $\langle n_{st} \rangle \approx 1.6$. The most common case (mode) is in fact the absence of any shared tags; this occurs with probability close to $2/3$ among randomly chosen pairs of users.

One can nevertheless expect that a number of mechanisms may lead to *local* alignment of the user profiles, in terms of shared tags and/or groups membership. The presence of a social link, in fact, indicates a priori some degree of shared context between the connected users, which are likely to have some interests in common, or to share some experiences, or who are simply exposed to each other’s content and annotations. As an example, Table 2 shows the 12 most frequently used tags for three Flickr users with comparable tagging activity. User A and user B have marked each other as friends, while user C has no connections to either A or B on the Flickr social network. All of these users have globally popular tags in their tag vocabulary. In this example, the neighbors A and B share an interest (expressed by the tag *flower*) and several of the most frequently used tags (marked in bold).

Regardless of the mechanism driving this potential local alignment, in the following we want to measure this effect for the case of tag dictionaries and group memberships, and put it into relation with the distances between users along the social network. This approach is similar to the exploration of topical locality in the Web, where the question is whether pages that are closer to each other in the link graph are more likely to be related to one another [15].

First, we must define robust measures of vocabulary similarity and group affiliation similarity between two users u and v . The first and simplest measures are given by the number of shared tags n_{st} among the tag vocabularies of u and v , and by the number of shared groups n_{sg} to which both u and v belong. These measures, however, are not normalized and can be affected by the specific activity patterns of the users: two very active users may have more tags in common than two less active users, just because active users tag more, on average. We therefore consider as well a distributional notion of similarity between the tag vocabularies of u and v . Following Ref. [1] we regard the vocabulary of a user as a feature vector whose elements correspond to tags and whose entries are the tag frequencies for that specific user’s vocabulary. To compare the tag feature vectors of two users, we use the standard cosine similarity [22]. Denoting by $f_u(t)$ the number of times that tag t has been used by user u , the cosine similarity $\sigma_{tags}(u, v)$ is defined as

$$\sigma_{tags}(u, v) = \frac{\sum_t f_u(t) f_v(t)}{\sqrt{\sum_t f_u(t)^2} \sqrt{\sum_t f_v(t)^2}}. \quad (5)$$

This quantity is 0 if u and v have no shared tags, and 1 if they have used exactly the same tags, in the same relative proportions. Because of the normalization factors in the denominator, $\sigma_{tags}(u, v)$

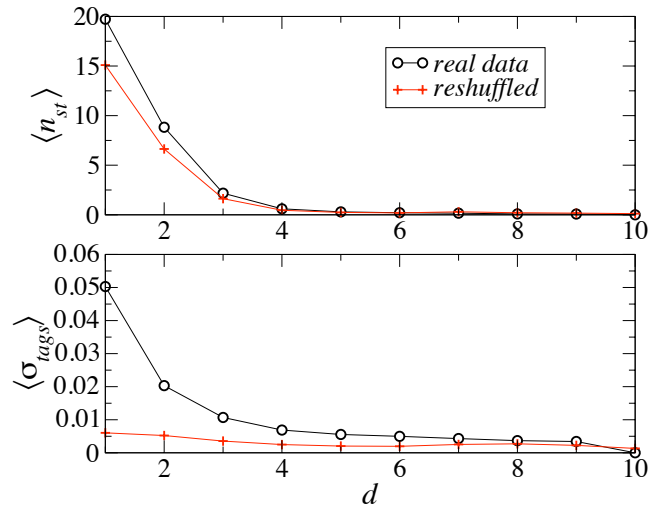


Figure 4: Top: average number of shared tags $\langle n_{st} \rangle$ for two Flickr users as a function of their distance d along the social network. Bottom: average cosine similarity $\langle \sigma_{tags} \rangle$ between the tag vocabularies of two Flickr users as a function of d . In both cases data for the same social network with reshuffled tag vocabularies are shown.

is not directly influenced by the global activity of a user.

Similarly, we can define the cosine similarity σ_{groups} for groups memberships. Since a user belongs at most once to a group, this reduces to

$$\sigma_{groups}(u, v) = \frac{\sum_g \delta_u^g \delta_v^g}{\sqrt{n_g(u) n_g(v)}} \quad (6)$$

where $\delta_u^g = 1$ if u belongs to group g and 0 otherwise.

To compute averages of these similarities, we randomly chose $N = 2 \times 10^4$ users and explored their neighborhoods in a breadth-first fashion. In order to exclude biases due to this sampling, we also performed an exhaustive investigation of the social network neighborhoods up to distance 2 from each user, obtaining the same results. Moreover we considered the distances along the social network using G_1 instead of G_0 , and again found the same results, showing the robustness of the observed behavior with respect to possible sampling biases due either to the crawl or to considering only users having both tagging activity and groups memberships.

Figures 4 and 5 give an indication of how the similarity between users depends on their distance d along the social network, by showing the average number of shared tags, of shared groups, and the corresponding average cosine similarities, of two users as a function of d . While the average number of shared tags or groups is quite large for neighbors (respectively close to 20 and to 10), it drops rapidly (exponentially) as d increases, and is close to 0 for $d \geq 4$.

Figures 4 and 5 provide a strong indication that a certain degree of alignment between neighbors in the social network is observed both at the lexical level and for group affiliations. As soon as the distance between two users on the social distance is not 1 (neighbors) or 2 (neighbors of neighbors) however, it becomes highly probable that these users have neither tags nor groups in common. Therefore the alignment is a strongly local effect.

The analysis of the mixing patterns of the social network performed previously leads us to investigate in more detail this local alignment. This analysis has indeed shown the presence of a strong assortativity with respect to the intensity of the users’ activity. It

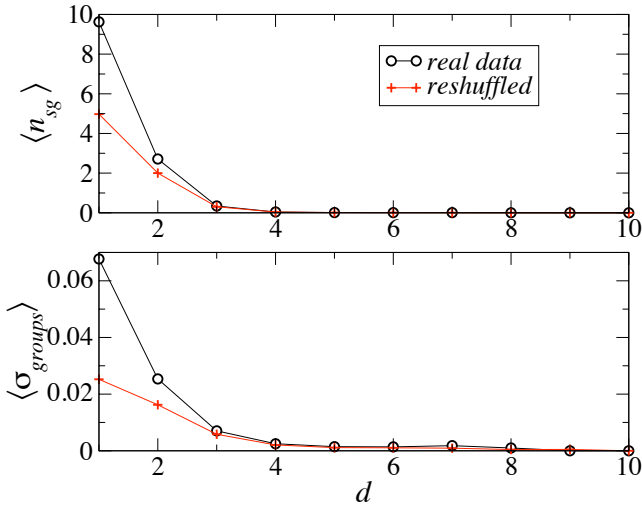


Figure 5: Top: average number of shared groups $\langle n_{sg} \rangle$ for two Flickr users as a function of their distance d along the social network. **Bottom:** average cosine similarity of the group affiliation $\langle \sigma_{groups} \rangle$ vs d . In both cases data for the same social network with reshuffled group affiliations (preserving the number of groups for each user) are shown.

could therefore be the case that such assortativity, by a purely statistical effect, yields an “apparent” local alignment between the tag vocabularies of users. For example, even in a hypothetical case of purely random tag assignments, it would be more probable to find tags in common between two large tag vocabularies than between a small one and a large one.

In order to discriminate between effects due to actual lexical and group membership similarity and those simply due to the assortativity, it is important to devise a proper *null model*, i.e. to construct an artificial system that retains the same social structure as the one under study, but lacks any lexical or topical alignment other than the one that may result from statistical effects. This is done by keeping fixed the Flickr social network and its assortativity pattern for the intensity of activity, but destroying socially-related lexical or topical alignments by means of a random permutation of tags among themselves and groups among themselves. More precisely, we proceed in the following fashion: (i) we keep the social network unchanged; (ii) we build the global list of tags with their multiplicity, i.e. each tag appears the total number of times it has been used; (iii) for each user with n_t tags $t_1, t_2 \dots t_{n_t}$, with respective frequencies f_1, f_2, \dots, f_{n_t} , we extract n_t distinct tags at random from the global list of tags and assign them to u with frequencies f_1, f_2, \dots, f_{n_t} . This guarantees that the number of distinct tags and the total number of tag assignments for each user is the same as in the original data, and that the distribution of frequencies of tags is left unchanged. Clearly, this null model preserves the assortativity patterns with respect to the amount of activity of users, as each user has exactly the same number of distinct tags and of tag assignments as in the real data. However, correlations between the tag vocabularies are lost, except the ones purely ascribed to statistical effects.

For group membership, we can proceed in a similar way: (i) we build a list of groups with a multiplicity equal to the number of users of each group (i.e., a group appears n times in the list if it has n users); (ii) for each user u belonging to n_g groups, we extract at random n_g (distinct) groups from the list and assign them to u . As for the tags, this procedure preserves the number of groups for

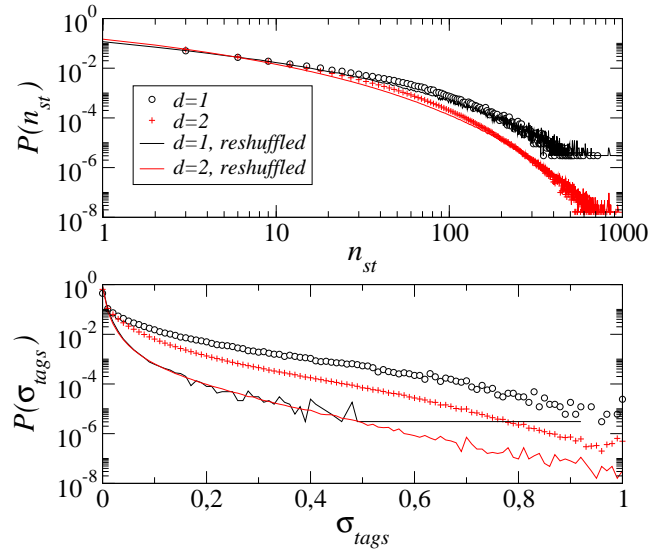


Figure 6: Top: Probability distributions of the number of shared tags of two users being at distance d on the social network, for $d = 1$ and $d = 2$ (symbols), and for the same network with reshuffled tags (lines). **Bottom:** same for the distributions of cosine similarities of the tag vocabularies.

each user, as well as the statistics of the number of users per group, while destroying correlations between users’ group memberships.

The goal of the null model is to determine the amount of lexical and topical alignment due to spurious activity correlations. Eliminating such spurious correlations is analogous in purpose to the use of inverse document frequency (IDF) in information retrieval. IDF discounts the contribution of globally common terms in assessing the similarity between documents. Such terms are likely to be shared by pairs of documents solely because of their statistical prevalence. Unlike in information retrieval, it is not straightforward to apply this type of discounting in social annotations. One would first need to determine whether to discount tags based on their prevalence among users or among resources. The null model destroys all spurious correlations regardless of their source.

Using the null model, we measured the alignment between users at distance d on the social network in the same way as for the original data. As Figs. 4 (top) and 5 (top) show, the average number of shared tags or of shared groups, as a function of the distance d , shows a similar trend to the original (non-reshuffled) data. For neighbors and next to nearest neighbors ($d < 3$), the average numbers of shared tags or groups are lower in the null model than in the original data, but still significantly higher than for users at larger distances. The assortative mixing between the amount of activity of neighboring users is therefore enough to yield a strong lexical and topical alignment *as simply measured by the number of shared tags or groups*. The case of cosine similarity is quite different. As shown in Fig. 4 (bottom), the average cosine similarity is very small in the null model, and does not depend strongly on the distance in the social network. Therefore local lexical alignment is a real effect: friends are more likely to use similar tag patterns. With respect to the topical alignment, a certain — albeit weaker — dependence of $\langle \sigma_{groups} \rangle$ on d is visible in Fig. 5 (bottom).

We also analyzed the distributions of n_{st} , σ_{tags} , n_{sg} , and σ_{groups} among users at fixed distance d , for both the original and the reshuffled data. For brevity we show only the distributions of n_{st} and σ_{tags} for $d = 1$ and $d = 2$ in Fig. 6. The distributions of n_{st} are

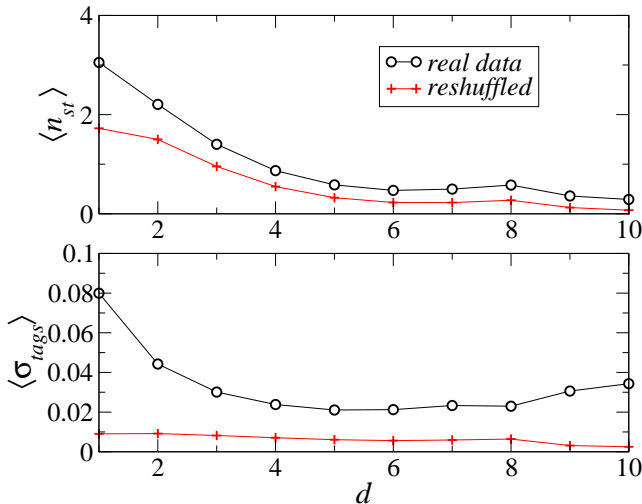


Figure 7: Average number of shared tags (top) and average cosine similarity between tag vocabularies (bottom) for pairs of Last.fm users as a function of their social distance. We also show data for the same social network with reshuffled tag vocabularies.

very similar for the original and the reshuffled data, while for the cosine similarity they are clearly different: a much stronger local alignment occurs in the original data.

As mentioned earlier, analogous results are found by analyzing our Last.fm data set. For illustration purposes we just show in Fig. 7 the dependencies of local tag alignment measures on social distance. Again cosine similarity is the more robust measure.

Our investigation of the lexical and topical alignment patterns in Flickr and Last.fm reveals therefore the following picture. The various measures of the topical and lexical overlap between users as a function of their distance along the social network clearly point toward a partial local alignment, which persists up to distances 2–3, even if large values can occasionally still be observed at larger distances. Interestingly, if the number of shared tags between users shows that a large part of the alignment is simply due to the assortative pattern concerning users’ amounts of activity. This result highlights the importance of considering appropriate null models to discriminate between purely statistical effects and real lexical or topical alignments. It also shows that correctly normalized similarity measures such as cosine similarity, which factor out the effects of vocabulary size, are more appropriate for such investigations, since they are less affected by the assortativity patterns.

5. PREDICTING SOCIAL LINKS

The analysis in the previous section strongly suggests that users with similar topical interests, as captured by shared tags in particular, are more likely to be neighbors in the social network. Therefore a natural question is whether semantic similarity measures among users based solely on their annotation patterns can be employed as accurate predictors of friendship links. We tested this hypothesis on both our Flickr and Last.fm data sets, because each provides annotation metadata needed to compute similarity as well as a social network to evaluate the accuracy of the predictions. For brevity we focus on reporting the results for the Last.fm data, which are more interesting for two reasons. First, contrary to Flickr, Last.fm is a “broad folksonomy” in which different users can easily annotate the same songs, artists, or albums. This allows us to compute

similarity based on shared content as well as shared vocabulary. Second, Last.fm provides *neighbor* recommendations. Neighbors are users with a similar music taste, based on listening patterns. The neighborhood relation is therefore independent of the explicit friendships established by the users, and provides an obvious gauge against which to evaluate any algorithm to predict social links. Except for the lack of such a comparison measure in Flickr (beyond the random choice baseline), and for not considering similarity measures based on shared items in Flickr, the prediction analysis yields consistent and encouraging results using both data sets.

5.1 Overview of semantic similarity measures

In prior work [12, 10, 11] we evaluated a number of *social similarity* measures based on folksonomies, i.e., on annotations represented as *triples* (*user, item, tag*) where Flickr photos and Last.fm songs are instances of items. All of these social similarity measures have the desirable property of being symmetric in the sense that they can be directly applied to compute the similarity between two items, two tags, or two users from a folksonomy. Therefore we employ several of these measures here to predict social network links from the similarity among users. We summarize below a few main features of the proposed user similarity measures; for further details and examples see Refs. [10, 11].

We consider two aggregation schemes. In *distributional* aggregation, we project along one of the dimensions keeping track of frequencies. For example, projecting onto items, a user u is represented as a tag vector whose component $f_u(t)$ is the number of items tagged by u with t . Analogously we can project onto tags representing users as item vectors. Unfortunately distributional aggregation requires that all similarities be recomputed for any change in annotations, leading to quadratic runtime complexity.

In *collaborative* aggregation, first we pick a feature (tag or item) and for each value of this feature we represent each user as a list of values of the other feature (items or tags). Then we compute a different similarity value between two users according to each of these lists. Finally we aggregate these similarities by voting (summing). For example, for each tag we can compute a similarity value based on item lists. These are then summed across tags to obtain the final similarity. Analogously we can compute similarities from tag lists and sum them across items. Collaborative aggregation has two advantages. First, it can be integrated with collaborative filtering techniques (hence the name) by a judicious definition of conditional probabilities $p(\text{item}|\text{tag})$ or $p(\text{tag}|\text{item})$. This makes collaborative similarity measures competitive with distributional measures in terms of accuracy [10]. Second, similarities based on collaborative aggregation can be updated incrementally, in linear time. When a triple is added or deleted, only similarities involving the item or tag in that triple need to be updated. As a result, collaborative aggregation leads to *scalable* social similarity measures. Each aggregation scheme has two variants, depending on whether we project onto/aggregate across tags or items.

For each aggregation scheme/variant we consider six measures: *cosine*, *overlap*, *matching*, *Dice* and *Jaccard coefficients*, and *maximum information path (MIP)*. Note that distributional cosine with projection onto tag vectors is the σ_{tags} measure discussed in the previous section. MIP is a generalization of Lin’s similarity [9] to the non-hierarchical triple representation [11]. For example, the distributional version of MIP with aggregation across items is defined as

$$\sigma_{items}^{MIP}(u_1, u_2) = \frac{2 \log(\min_{t \in T_1 \cap T_2} p[t])}{\log(\min_{t \in T_1} p[t]) + \log(\min_{t \in T_2} p[t])}$$

where T_i is the set of tags used by u_i and $p[t]$ is the fraction of

users annotating with tag t . For aggregation across tags the definition is analogous except that we look at probabilities of shared items. For the collaborative version projecting onto items, say, we would similarly define $\sigma_{items}^{MIP}(u_1, u_2; r)$ for each item r replacing T_i by the set T_i^r of tags used by u_i to annotate r , and replacing $p[t]$ by a suitably defined $p[t|r]$. Finally $\sigma_{items}^{MIP}(u_1, u_2) = \sum_r \sigma_{items}^{MIP}(u_1, u_2; r)$. Among the measures discussed in Ref. [10] we did not consider mutual information due to its higher computational complexity. In addition to these $6 \times 2 \times 2 = 24$ measures, we also consider for comparison purposes the affinity score provided by Last.fm for the 60 top neighbors of each user. As mentioned earlier, this score is based on similar music taste and computed from listening patterns.

5.2 Methodology

The evaluation consists in selecting a set of pairs of users, computing each similarity measure for each pair, and adding social links between users in decreasing order of their topical similarity: the pairs of users with highest similarity are those we predict to be most likely friends. For each predicted social link, we check the actual social network to see if the prediction is correct. As one decreases the similarity threshold more links are added, leading to more true positives but also more false positives. The best similarity measure is the one that achieves the best ratio of true positive to false positive rate across similarity values, as illustrated by ROC plots and quantified by the area under the ROC curve (AUC).

To sample the pairs of users from our data set, we start by sorting the users by one of three different criteria:

1. *Most Active*: By number of annotations;
2. *Most Connected*: By number of friends;
3. *Random*: By shuffling.

The set P of pairs is then constructed according to the following algorithm:

```
repeat:
  pick next  $u$  by sorting criterion
   $R \leftarrow$  set of 60 neighbors of  $u$ 
  for each  $n$  from  $R$ :
    if  $n$  is active:
       $P \leftarrow (u, n)$ 
  stop when  $|P| = M$ 
```

Recall that users are considered active if they have at least one annotation. This is a requirement in order to compute topical similarity. The choice to select pairs among neighbors stems from the goal of comparing the accuracy of topical similarity methods with Last.fm recommendations. Given the sparsity of the social and neighbor networks, comparative evaluation would be impossible without such a sampling. Note that this sampling strategy may bias the evaluation in favor of Last.fm’s neighbor recommendations, because if two active neighbors are friends, they are guaranteed to be detected while two active friends who are not neighbors would be missed by our sampling even if they were detected by our similarity measures. Therefore our sampling algorithm is a conservative choice in that it does not unfairly help our similarity measures in the evaluation.¹ We experimented with sets of pairs of cardinality $M = 1,000$ and $M = 2,500$. The results are similar; we report below on evaluations with 1,000 pairs.

¹At press time Last.fm has released a new API functionality, called *Tasteometer*, to query the affinity score for arbitrary user pairs. This will allow us to sample users independently of neighborhood relations in future evaluations.

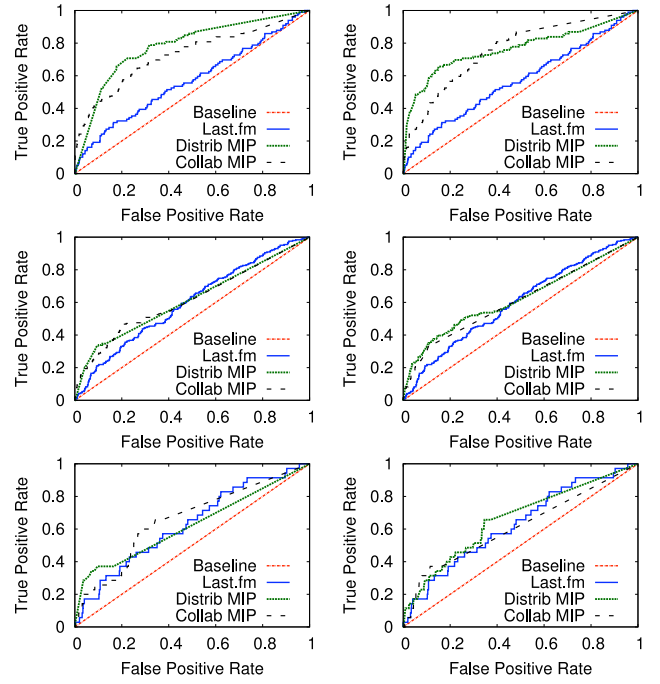


Figure 8: ROC curves comparing the social link predictions of distributional and collaborative MIP with the Last.fm recommendations. Triples can be aggregated across items (left) or tags (right). Users are sampled from the most active (top), the most connected (middle), or at random (bottom).

5.3 Results

The best results are obtained by sampling the most active users. This is not surprising, as the topical similarity measures have more evidence at their disposal from the users’ metadata. In Fig. 8 we show ROC plots for the MIP measures, which perform consistently well (among the top 3 measures) in all conditions. While Last.fm neighbor recommendations do perform better than the random baseline, topical similarity is much more accurate than music taste in predicting friends for the most active users. The highest accuracy is achieved by aggregating across items, i.e. representing users as vectors of tags. For the most connected users as well as randomly selected users, the topical similarity measures still perform significantly better than the random baseline, but only marginally better than Last.fm neighbor recommendations. Let us therefore focus on the most active users to evaluate the predictions of additional measures.

Since it is difficult to compare 25 ROC plots, let us summarize our results as follows. For each of the 24 topical similarity measures, σ , we compare the area under the ROC curve with that obtained by the Last.fm neighbor recommendations. We measure the relative improvement $AUC(\sigma)/AUC(\text{Last.fm}) - 1$. A positive number indicates higher accuracy than Last.fm in the sense of a larger number of true positives for the same number of false positives. Fig. 9 shows that all topical similarity measures outperform the Last.fm neighbor recommendations. The lonely exception is distributional item overlap, for which the improvement is not significant. For distributional measures, aggregation across items (focusing on shared tags) yields better predictions. Overall, the best accuracy is achieved by distributional MIP based on shared tags (37% improvement). However, if scalability is important, predictions of comparable accuracy can be obtained by projecting over

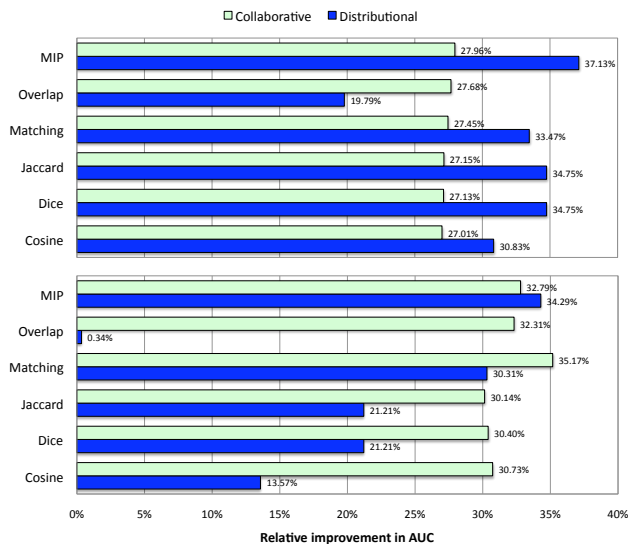


Figure 9: Relative improvement in area under ROC curves over Last.fm neighbor recommendations, for the most active users. Triples are aggregated across items (top) or tags (bottom).

each tag, and then aggregating the similarities across tags. Collaborative matching yields the best predictions in this case (35% improvement), followed closely by collaborative MIP (33%) and overlap (32%).

In summary, these results confirm that the social network constructed from semantic similarity based on user annotations captures actual friendship more accurately than Last.fm’s recommendations based on listening patterns. This suggests that the Last.fm neighbourhood selection could be improved by adopting tag-based similarity measures, especially for active users. The results are qualitatively similar for the other sampling methods, but the differences in accuracy are less significant, with the best predictions outperforming Last.fm by at most 3–4% in AUC for the most connected users and by 1–5% for random users.

6. CONCLUSION AND FUTURE WORK

In this paper we exploited one peculiarity of Flickr and Last.fm, namely the availability of both tagging data and the explicit social links between users, to investigate the interplay of the social and semantic aspects of Web 2.0 applications.

We showed that strong correlations exist between user activity in the social context (user degree centrality and group participation) and the tagging activity of the same user, and that a strong assortative mixing exists in the social network; more active nodes tend to have as neighbors other active nodes. We also found that a local alignment of users’ tag vocabularies is clearly visible between nearby users in the social network, even for social tagging systems that lack a notion of globally shared tag vocabulary, such as Flickr. We investigated the dependence of the number of shared tags and the number of shared groups of two users, as a function of their shortest-path distance on the social network. We introduced a null model and we used it to show that part of the similarity between users who are close on the social network is due to the aforementioned correlations between user activity and user degree centrality in the social network. That is, assortativity and heterogeneity alone can yield a comparatively higher overlap of tag usage and group membership for neighboring users. In this context, our work high-

lights the importance of backing up the data analysis with carefully designed null models, which are necessary — as is the case here — to disentangle the actual signal we are looking for from effects arising purely from correlations and mixing properties.

Armed with the null model methodology, we showed that it is possible to define measures of tag vocabulary and group membership overlap that are robust with respect to the above biases. We investigated the average similarity of two users, according to such measures, as a function of the distance in the social network, finding that a clear signal of local lexical and topical alignment can be detected in Flickr and Last.fm.

The observed local alignment between lexical (tag) features on the social network led us to investigate the question of whether topical similarity measures based on social annotations can be applied to the prediction (or recommendation) of friend relations in a social network. Last.fm provided us with an ideal opportunity to explore this question thanks to the simultaneous availability of social link recommendations based on music listening patterns, along with the annotation metadata and social network.

We were able to evaluate the predictive power of a large number of social topical similarity measures from the literature, spanning multiple aggregation/projection schemes. The results were very encouraging; using any of the tested social similarity measures we were able to improve on the accuracy of the social link predictions provided by Last.fm, and the improvements were especially significant for users who are active taggers. Equally encouraging is the fact that accurate predictions are afforded even by incremental measures, pointing to scalable algorithms to compute social link recommendations or improve existing methods.

Among the various measures we evaluated, maximum information path has proven very accurate across aggregation schemes, data sets, and sampling methodologies. When predicting social links between active taggers, MIP is the best measure among those based on distributional aggregation (regardless of whether we aggregate across items or tags), and either the best or a close second among the scalable measures based on collaborative aggregation, across items or tags respectively.

As expected, the Last.fm neighborhood relation seems to be independent of the tagging activity of users; we obtain very close AUC values for both the most active and most connected sampling strategies. Therefore the number of annotations considered does not affect the estimation of user affinity based on listening patterns. Accordingly, the present results suggest that the Last.fm neighborhood recommendation could benefit considerably from social similarity measures — especially for active users.

Our results have important implications for the design of social media. As social networks and social tagging continue to become increasingly popular and integrated in the Web 2.0, our techniques can be directly applied to improve the synergies between social and semantic networks — specifically, to help users find friends with similar topical interests as well as facilitate the formation of topical communities.

We plan to further validate our findings via user studies. We will pursue this direction by integrating a “suggest friend” functionality into GiveALink.org, a social bookmarking system developed by our group at Indiana University for research purposes.

On the more theoretical side, future work will consider the present analysis performed longitudinally in time, to move from assessing correlations to assessing causality. We will investigate whether the activation of a social link induces a local alignment of tags and group membership, or conversely a similarity in interests triggers the creation of a social link. Both processes probably play an important role in different situations, and adding a temporal dimen-

sion to the analysis presented here will provide new insight for modeling the structure and evolution of user-driven systems.

Acknowledgments

The authors acknowledge stimulating discussion with A. Baldassarri, A. Capocci, V. Loreto, and V. D. P. Servedio. We are grateful to Flickr and Last.fm for making their data available. This work has been partly supported by the *TAGora* project (FP6-IST5-34721) funded by the FET program of the European Commission and by the project *Social Integration of Semantic Annotation Networks for Web Applications* funded by National Science Foundation award IIS-0811994. R. Schifanella was supported by the World Wide Style project (WWS) of the University of Turin.

7. REFERENCES

- [1] C. Cattuto, D. Benz, A. Hotho, and G. Stumme. Semantic grounding of tag relatedness in social bookmarking systems. In *Proceedings of the 7th International Semantic Web Conference (ISWC08)*, volume 5318 of *LNCS*, pages 615–631. Springer-Verlag, 2008.
- [2] S. Golder and B. A. Huberman. The structure of collaborative tagging systems. *Journal of Information Science*, 32(2):198–208, April 2006.
- [3] T. Hammond, T. Hannay, B. Lund, and J. Scott. Social Bookmarking Tools (I): A General Review. *D-Lib Magazine*, 11(4), April 2005.
- [4] R. Kumar, J. Novak, and A. Tomkins. Structure and evolution of online social networks. In *KDD '06: Proceedings of the 12th ACM SIGKDD international conference on Knowledge discovery and data mining*, pages 611–617, New York, NY, USA, 2006. ACM Press.
- [5] K. Lerman and L. Jones. Social browsing on flickr. In *Proceedings of International Conference on Weblogs and Social Media (ICWSM)*, March 2007. <http://arxiv.org/abs/cs.HC/0612047>.
- [6] J. Leskovec, L. Backstrom, R. Kumar, and A. Tomkins. Microscopic evolution of social networks. In *KDD '08: Proceeding of the 14th ACM SIGKDD international conference on Knowledge discovery and data mining*, pages 462–470, New York, NY, USA, 2008. ACM.
- [7] X. Li, L. Guo, and Y. E. Zhao. Tag-based social interest discovery. In *Proceeding of the 17th Intl. Conf. on World Wide Web (WWW)*, pages 675–684, New York, NY, USA, 2008. ACM.
- [8] D. Liben-Nowell and J. Kleinberg. The link prediction problem for social networks. In *Proc. 12th Intl. Conf. on Information and Knowledge Management (CIKM)*, pages 556–559, New York, NY, USA, 2003. ACM.
- [9] D. Lin. An information-theoretic definition of similarity. In J. W. Shavlik, editor, *Proceedings of the Fifteenth International Conference on Machine Learning (ICML)*, pages 296–304. Morgan Kaufmann, 1998.
- [10] B. Markines, C. Cattuto, F. Menczer, D. Benz, A. Hotho, and G. Stumme. Evaluating similarity measures for emergent semantics of social tagging. In *Proc. 18th Intl. World Wide Web Conference (WWW)*, 2009.
- [11] B. Markines and F. Menczer. A scalable, collaborative similarity measure for social annotation systems. In *Proc. 20th ACM Conf. on Hypertext and Hypermedia (HT)*, 2009.
- [12] B. Markines, H. Roinestad, and F. Menczer. Efficient assembly of social semantic networks. In *Proc. 19th ACM Conf. on Hypertext and Hypermedia (HT)*, pages 149–156, New York, NY, USA, 2008. ACM.
- [13] C. Marlow, M. Naaman, D. Boyd, and M. Davis. Ht06, tagging paper, taxonomy, flickr, academic article, to read. In *Proc. 17th ACM Conference on Hypertext and hypermedia (HT)*, pages 31–40, New York, NY, USA, 2006. ACM Press.
- [14] A. Mathes. Folksonomies – Cooperative Classification and Communication Through Shared Metadata, December 2004. <http://www.adammathes.com/academic/computer-mediated-communication/folksonomies.html>.
- [15] F. Menczer. Lexical and semantic clustering by Web links. *Journal of the American Society for Information Science and Technology*, 55(14):1261–1269, 2004.
- [16] P. Mika. Ontologies are us: A unified model of social networks and semantics. *Web Semantics: Science, Services and Agents on the World Wide Web*, 5(1):5–15, 2007.
- [17] A. Mislove, H. S. Koppula, K. P. Gummadi, P. Druschel, and B. Bhattacharjee. Growth of the flickr social network. In *Proceedings of the 1st ACM SIGCOMM Workshop on Social Networks (WOSN'08)*, August 2008.
- [18] A. Mislove, M. Marcon, K. P. Gummadi, P. Druschel, and B. Bhattacharjee. Measurement and analysis of online social networks. In *Proceedings of the 5th ACM/USENIX Internet Measurement Conference (IMC'07)*, October 2007.
- [19] M. E. J. Newman. Mixing patterns in networks. *Phys. Rev. E*, 67:026126, 2003.
- [20] R. Pastor-Satorras, A. Vázquez, and A. Vespignani. Dynamical and correlation properties of the Internet. *Phys. Rev. Lett.*, 87:258701, 2001.
- [21] C. Prieur, D. Cardon, J.-S. Beuscart, N. Pissard, and P. Pons. The strength of weak cooperation: A case study on flickr. Technical Report arXiv:0802.2317v1, CoRR, 2008.
- [22] G. Salton. *Automatic text processing: the transformation, analysis, and retrieval of information by computer*. Addison-Wesley Longman Publishing Co., Inc., Boston, MA, USA, 1989.
- [23] E. Santos-Neto, D. Condon, N. Andrade, A. Iamnitchi, and M. Ripeanu. Individual and social behavior in tagging systems. In C. Cattuto, G. Ruffo, and F. Menczer, editors, *Proceedings of the 20th ACM Conference on Hypertext and Hypermedia (HT)*, pages 183–192, New York, NY, USA, 2009. ACM.
- [24] S. Staab, S. Santini, F. Nack, L. Steels, and A. Maedche. Emergent semantics. *Intelligent Systems, IEEE [see also IEEE Expert]*, 17(1):78–86, 2002.
- [25] L. Steels. Semiotic dynamics for embodied agents. *IEEE Intelligent Systems*, 21, 2006.
- [26] R. van Zwol. Flickr: Who is looking? In *WI '07: Proceedings of the IEEE/WIC/ACM International Conference on Web Intelligence*, pages 184–190, Washington, DC, USA, 2007. IEEE Computer Society.
- [27] A. Vázquez, R. Pastor-Satorras, and A. Vespignani. Large-scale topological and dynamical properties of the Internet. *Phys. Rev. E*, 65:066130, 2002.
- [28] T. V. Wal. Explaining and showing broad and narrow folksonomies, 2005. http://www.personalincloud.com/2005/02/explaining_and_.html.