



HAL
open science

Density effects on collapse, compression and adhesion of thermoresponsive polymer brushes

Ibrahim Bou Malham, Lionel Bureau

► **To cite this version:**

Ibrahim Bou Malham, Lionel Bureau. Density effects on collapse, compression and adhesion of thermoresponsive polymer brushes. 2009. hal-00418617v2

HAL Id: hal-00418617

<https://hal.science/hal-00418617v2>

Preprint submitted on 9 Oct 2009

HAL is a multi-disciplinary open access archive for the deposit and dissemination of scientific research documents, whether they are published or not. The documents may come from teaching and research institutions in France or abroad, or from public or private research centers.

L'archive ouverte pluridisciplinaire **HAL**, est destinée au dépôt et à la diffusion de documents scientifiques de niveau recherche, publiés ou non, émanant des établissements d'enseignement et de recherche français ou étrangers, des laboratoires publics ou privés.

Density effects on collapse, compression and adhesion of thermoresponsive polymer brushes

Ibrahim B. Malham and Lionel Bureau*

Institut des Nanosciences de Paris, UMR 7588 CNRS-Université Paris 6, 140 rue de Lourmel, 75015 Paris, France

We probe, using the Surface Forces Apparatus, the thermal response of poly(N-isopropylacrylamide) (PNIPAM) brushes of various grafting densities, grown from plasma-activated mica by means of surface-initiated polymerization. We thus show that dense thermoresponsive brushes collapse gradually as temperature is increased, and that grafting density greatly affects their ability to swell: the swelling ratio of the brushes, which characterizes the thickness variation between the swollen and the collapsed state, is found to decrease from ~ 7 to ~ 3 as the number of grafted chains per unit area increases. Such a result, obtained with an unprecedented resolution in grafting density, provides qualitative support to calculations by Mendez *et al.* [*Macromolecules* **2005** 38, 174]. We further show that, in contrast to swelling, adhesion between two PNIPAM brushes appears to be rather insensitive to their molecular structure.

PACS numbers:

I. INTRODUCTION

Temperature sensitive polymers attract a growing interest for their use in designing ‘smart’ surfaces or interfaces [1, 2, 3], which properties (wettability [4], adhesion [5], friction [6, 7],...) can be deeply altered by an external thermal stimulus. Such smart systems rely on the fact that thermosensitive polymers exhibit a lower critical solution temperature (LCST) when mixed with a solvent [8]. Below the LCST, polymer chains are well solvated and adopt a swollen coil conformation. As the temperature is increased across the LCST, the solvent quality goes from good to poor, phase separation occurs, and macromolecules collapse to display a dense globular conformation. Such a behaviour is commonly encountered in liquid binary mixtures in which specific interactions (*e.g.* hydrogen bonding) exist between constituents [9, 10], as in aqueous solutions of poly(N-isopropylacrylamide) (PNIPAM), one of the most studied among thermosensitive systems [11, 12].

PNIPAM in water exhibits a LCST around 32°C [11, 12], above which polymer chains become hydrophobic. The coil-to-globule transition in bulk solutions occurs over a narrow range of temperature and involves large variations in chain dimension [12, 13]. These properties, which have been recently exploited in microfluidics for the design of switches [14] and valves [15] for flow control, have found their main applications in bio-engineering [2, 3, 16]. The use of PNIPAM coatings on solid surfaces is indeed a widespread technique for cell adhesion control in tissue engineering [17, 18], or for separation of biomolecules in temperature selective chromatography [18].

Grafted PNIPAM brushes are viewed as promising surface modifiers in order to finely tune the interactions

between cells or proteins and the surfaces of biomedical devices [18]. However, empirical design of such thermoresponsive substrates might reveal insufficient. This appears for instance from two recent studies on harvesting of cell cultures grown on thermoresponsive substrates, that reached opposite conclusions about the influence of brush thickness on cell proliferation/detachment [17, 19]. This underlines that reliable control of interactions requires a deeper understanding of how the brush properties (surface energy, ability to swell/collapse, thermal response,...) depend on molecular parameters such as grafting density or chain length [3].

The structure of PNIPAM brushes in water has been the subject of recent experimental investigations. Force sensing techniques (Atomic Force Microscopy and Surface Forces Apparatus) have been used to measure (i) the range of repulsive forces resulting from brush compression [20, 21, 22, 23, 24], and (ii) adhesion forces between PNIPAM brushes and various countersurfaces [5, 21, 22, 23, 24]. Most of these studies have been performed at only two temperatures, below and above the bulk LCST. On the other hand, neutron reflectivity [25], quartz-crystal microbalance [20, 26, 27] or surface-plasmon resonance [28] have been used to follow in detail the evolution with temperature of the thickness of brushes of different densities and molecular weights. Bringing together the conclusions of these studies, two important results may be put forward:

(i) the collapse of densely grafted chains occurs over a broader temperature range [25, 26, 27, 28] than that of dilute chains in solution [13] or brushes with low grafting density [20],

(ii) the swelling ratio, *i.e.* the ratio of the swollen to the collapsed thickness, is affected by both chain length and grafting density [23, 24, 25].

The former result has been obtained in several independent studies, and is in qualitative agreement with numerical and theoretical predictions about the collapse of brushes in poor solvent [29, 30, 31]. However, open questions remain regarding point (ii), due to the limited

*Electronic address: bureau@insp.jussieu.fr

number of studies which systematically investigated the effect of molecular parameters on the magnitude of brush collapse [23, 24, 25]. In particular, whether a high grafting density favors or prevents large swelling ratio is still to be clarified. Furthermore, the role of brush density on the magnitude of adhesion forces with PNIPAM surfaces has remained unexplored.

These points, which are crucial for the design of smart surfaces based on thermoresponsive thin films, have led us to investigate in further details the effect of grafting density on the properties of PNIPAM brushes.

We have used the surface forces apparatus to study the thermal response of PNIPAM brushes grown on mica substrates by the grafting from method.

We focus on brushes of given molecular weight ($M_w \approx 475 \text{ kg.mol}^{-1}$) exhibiting densities ranging from 2×10^{-4} to $4 \times 10^{-3} \text{ chain.}\text{\AA}^{-2}$. We show that, in the range of temperatures explored (20–40°C):

(i) for all grafting densities, the brush thickness decreases slowly as the temperature is increased up to 30°C, then exhibits a marker decrease between 30 and 35°C, temperature above which the collapsed thickness is reached. This confirms the broadening of the collapse transition previously observed for dense brushes [25, 26, 27, 28].

(ii) the swelling ratio decreases noticeably with increasing surface coverage. This trend, which we observe with an unprecedented resolution over a large range of grafting densities, is in good qualitative agreement with recent predictions of Mendez *et al.* [32].

(iii) in contrast to the density dependence of collapse, adhesive forces between two identical brushes, which build up for temperature above $\sim 30^\circ\text{C}$, appear to be rather insensitive to grafting density.

II. MATERIALS AND METHODS

A. Materials

Substrates were cleaved from muscovite mica plates purchased from JBG-Metafix (France). The monomer N-isopropylacrylamide (NIPAM 99%, Acros Organics) was recrystallized three times in n-hexane and stored in a desiccator under vacuum until use. n-hexane, toluene and absolute ethanol (Normapur, VWR France) were used as received. 3-aminopropyl-triethoxysilane (APTES, $\geq 98\%$) and propyl-trimethoxysilane (PTMS, 98%) were obtained from Sigma-Aldrich. Triethylamine (TEA, 99% pure), copper (I) bromide (CuBr 98%, extra pure), copper (II) bromide (CuBr₂, 99% extra pure), 1,1,7,7-Pentamethyldiethylenetriamine (PMDETA, 99%) and 2-bromo-2-methylpropionyl bromide (98%, pure) were purchased from Acros Organics. All organic solvents were filtered over 0.20 μm Teflon membranes prior to use. All aqueous solutions were prepared in deionized water (18 M Ω) filtered over a 0.20 μm cellulose acetate membrane before use.

B. Surface Forces Apparatus

Experiments reported in the present paper were performed using a home-built surface forces apparatus (SFA) [33]. The apparatus has been modified to include a stainless steel cell of volume 1.5 mL that can be filled with a solvent into which the surfaces under study are fully immersed. We have used this instrument for time-resolved measurements of force-thickness curves during compression/decompression of PNIPAM brushes in water, confined between two atomically smooth mica surfaces. Such measurements were performed at different temperatures, below and above the bulk collapse temperature. The experimental configuration, involving two facing brushes grafted on curved mica sheets, is sketched on Fig. 1.

Normal forces are measured, with a resolution of $\sim 10^{-6}$ N, by means of a flexure-hinge spring of stiffness 9500 N.m⁻¹ equipped with a capacitive displacement sensor. The distance between mica substrates is measured by white-light multiple-beam interferometry (MBI) [34, 35]: the fringes of equal chromatic order produced between the reflective backsides of the substrates are analyzed using the multilayer matrix method [33, 36] in order to deduce the thickness and the effective refractive index of the confined medium.

Mica substrates were prepared according to the following protocol. A large mica sheet (10 cm \times 10 cm) was cleaved down to a thickness of $\sim 10\text{--}30 \mu\text{m}$. One side was thermally evaporated with a 40 nm-thick silver layer, in order to obtain a highly reflective surface for multiple beam interferometry. Samples of $\sim 1 \text{ cm}^2$ were cut from this sheet with surgical scissors, and glued, silver side down, onto glass cylindrical lenses (radius of curvature $R \simeq 1 \text{ cm}$), using a UV-curing glue (NOA 81, Norland). Two glued sheets were then re-cleaved using adhesive tape, down to a thickness of 1–4 μm . The cylindrical lenses were then mounted inside the SFA, with their axis crossed at right angle, and the exact thickness of each substrate was determined by MBI, following a procedure described in [37]. Samples were then unmounted and subjected to the various surface treatments described below in order to obtain brushes of PNIPAM covalently grafted on the substrates.

After grafting on both mica sheets, samples were installed back in the SFA, brushes were brought into contact in the absence of solvent, and the total thickness, h_{tot} , of grafted PNIPAM was measured. In what follows, we report the dry thickness of the various brushes as being $h_{\text{dry}} = h_{\text{tot}}/2$, assuming that an identical amount of polymer is grafted on each surface. The refractive index for such dry layers was measured to be 1.47 ± 0.02 , in good agreement with values reported in other study [23].

The surfaces were then separated, and water injected into the liquid cell until full immersion of the brushes. The temperature inside the SFA was set, to within $\pm 0.01^\circ\text{C}$, to a chosen value in the range 20–40°C, by means of a thermoregulation system described previously [33]. The surfaces were approached by driving the re-

mote point of the force-measuring spring at a prescribed velocity V , until a normal load of $\sim 10^{-2}$ N was reached, and then separated at the same driving velocity. All the results presented below have been obtained with $V \simeq 4$ nm.s $^{-1}$. We have checked that lowering the driving velocity by one order of magnitude did not affect the range of measurable repulsive forces by more than a few percents. This indicates that, with the chosen approach velocity, forces mostly arise from steric repulsion between brushes and not from hydrodynamic drag due to solvent flow. Besides, we have found that the effective refraction index (n_{eff}) for the brush/water system increases from ~ 1.33 for large (several microns) intersurface separations, up to 1.43 ± 0.02 at the onset of repulsion between brushes. Under stronger brush compressions, n_{eff} stays roughly constant, within experimental resolution, at a value of $\simeq 1.45$. Since we focus, in what follows, on brush compression, we present results for which the brush thickness has been calculated using a constant $n_{\text{eff}} = 1.45$.

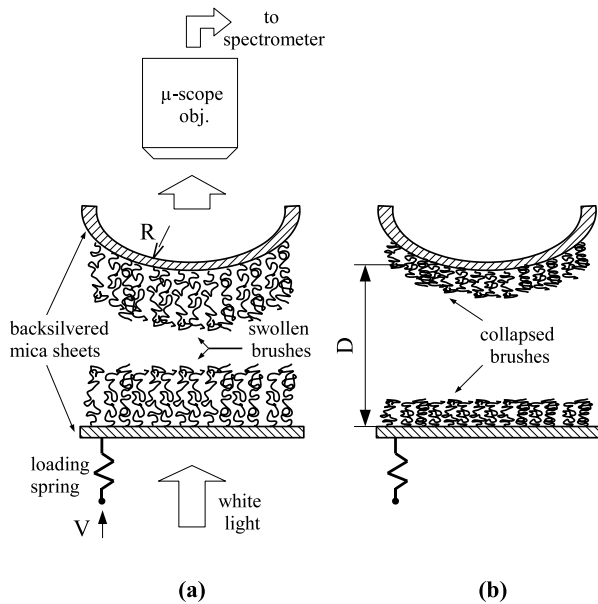


FIG. 1: Schematic representation of the experimental configuration. PNIPAM brushes are grafted on curved mica sheets. Interbrush forces during compression/decompression are measured by means of a loading spring. The distance D between the mica surfaces is measured by multiple-beam interferometry. The Fabry-Perot cavity formed by the backsilvered mica sheets is shone with white light. The transmitted light is collected by a microscope objective and sent to a spectrometer for spectral analysis of the fringes of equal chromatic order, from which D is calculated. Experiments are performed over a temperature range of 20–40°C, which allows to probe thermal response of the brushes when going from the swollen (a) to the collapsed (b) state.

C. Substrates preparation

Scheme 2 summarizes the different steps, following the thickness measurement of a pair of bare mica sheets, which lead to substrates grafted with a given surface density of initiator for Atom Transfer Radical Polymerization (ATRP).

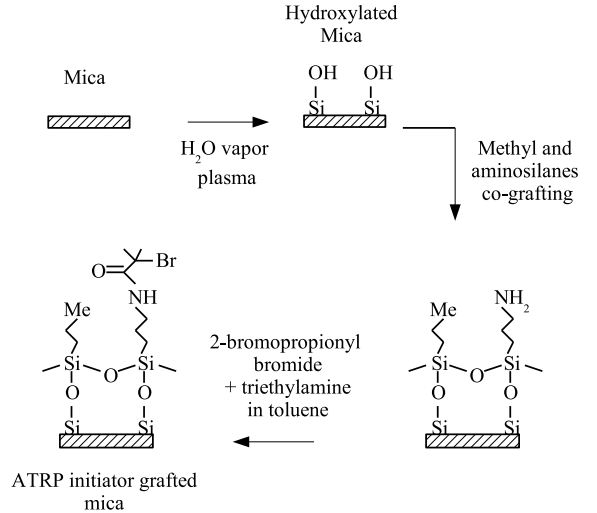


FIG. 2: Grafting steps for immobilization of ATRP initiator on mica surfaces.

(i) The mica samples of known thickness were transferred to a plasma reactor (model Femto from Diener Electronics Germany, operated at 80W), where they were exposed for 10 minutes to a RF-plasma generated in water vapor, at a pressure of 0.4 mbar. Such a treatment, proposed initially by Parker *et al.* [38], has been shown to produce silanol groups at the mica surface [39], without any significant increase of its roughness. Covalent attachment of silane based molecules on such plasma-activated surfaces is then possible [38, 39, 40, 41].

(ii) Hydroxylated mica surfaces were then immediately immersed in a solution of propyltrimethoxysilane (PTMS) in toluene at 70°C. The PTMS solution was prepared following the procedure described by Smith *et al.* [42]: 0.5 mL of PTMS were mixed with 25 mL of toluene, stirred at 70°C for 90 minutes, and filtered over a 0.2 μm Teflon membrane before immersion of the substrates. After PTMS grafting, mica surfaces were thoroughly rinsed with toluene, ethanol and water, and dried in an argon flow. This step results in a fraction of the silanol groups at the mica surfaces being replaced by methyl-terminated molecules. This fraction was varied by adjusting the immersion time between 0 and 1h.

(iii) PTMS grafted samples were subsequently immersed, at room temperature and for a duration ranging from a few seconds to 5 minutes, in an aqueous solution of aminopropyltriethoxysilane (APTES). APTES (100 μL)

was diluted in water (100 mL), stirred for 2h at ambient temperature in order to prehydrolyze the ethoxysilane groups, and filtered through a $0.2\ \mu\text{m}$ membrane before use. APTES grafting was followed by copious rinsing with water and ethanol. This yields mica substrates which exhibit a mixed NH_2/CH_3 functionality at the surface, the ratio of amino to methyl groups being varied by adjusting immersion times in step (ii) and (iii).

(iv) A solution of triethylamine (1.22 mL) in toluene (20 mL) was then prepared and cooled at 0°C . The silane grafted mica samples were immersed in this solution, to which $255\ \mu\text{L}$ of 2-bromo-2-methylpropionyl bromide were added dropwise. The samples were left in the bath for 2–3 minutes, after which they were rinsed in toluene, washed in ethanol and water and dried in an argon flow. This step results in surface immobilization, on the amino-terminated sites, of the ATRP initiator from which PNIPAM brushes are grown [25, 43].

D. Grafting of PNIPAM brushes

Brushes were grown by ATRP, following a protocole akin to that described in references [22, 23, 25]. A solution of NIPAM (3.00 g) dissolved in deionized water (15 mL) was deoxygenated by bubbling Argon at room temperature for 30 min. A solution of CuBr (0.044g) in water (3 mL) was prepared and stirred while $210\ \mu\text{L}$ of PMDETA was added for copper complexation. This solution was then mixed to the NIPAM solution under argon bubbling.

A pair of identically modified mica samples was then placed for 5 minutes in the aqueous solution of NIPAM and copper catalyst. Next, samples were immersed for 10 min in 10 mL of an aqueous solution of CuBr_2 (0.048g)/PMDETA ($126\ \mu\text{L}$) to quench the polymerisation reaction. Finally, surfaces were rinsed repeatedly with water and dried carefully in an argon stream inside a laminar flow cabinet, where they were installed in the surface forces apparatus.

We have used the same polymerization time for each pair of mica substrates, which we expect to result in brushes formed of chains of comparable molecular weight, the surface density of which shall be controlled by the initial ATRP initiator coverage.

E. Characterization of grafted layers

PNIPAM brushes were first characterized by measuring their dry thickness, using the SFA. In what follows, we present results obtained on brushes of six different thicknesses, which are reported in Table I. Since NIPAM polymerization occurred only at the surface of the samples, and not in the bulk solution, we do not know *a priori* the molecular weight of the grafted chains. However, as presented in the Discussion section below, a scaling analysis of the ratio between swollen and dry thick-

TABLE I: Molecular parameters of PNIPAM brushes. ^(a)estimated from the scaling analysis using Eq. 2. ^(b)estimated from Eq. 1 after determination of the grafting density. ^(c)density calculated using Eq.1, assuming $N = 4200$, *i.e.* the average value of chain lengths determined for the thicker brushes.

dry thickness (nm)	grafting density (chain. \AA^{-2})	number of monomer units/chain
215	0.0042 ^a	4130 ^b
155	0.0033 ^a	3800 ^b
125	0.0024 ^a	4200 ^b
70	0.0014 ^a	4080 ^b
50	0.0009 ^a	4600 ^b
10	0.0002 ^c	4200 ^c

nesses, measured for each brush, allows us to estimate both the grafting densities and the chain length of the grafted layers. These values, reported in Table I, confirm that brushes of different thickness display different grafting densities of chains of roughly constant molecular weight.

Besides, we have performed wetting experiments in order to measure the static contact angle (θ_s) of water as a function of temperature on the various brushes. This was done on flat mica substrates submitted, simultaneously with the SFA samples, to the sequence of chemical modifications described above. Experiments were performed using a custom-built instrument, described in a previous publication [41], which we have adapted in order to regulate the temperature of the substrate and of the water droplets in the range $20\text{--}40^\circ\text{C}$.

Figure 3 shows the evolution of θ_s with temperature for three brush thicknesses. It can be seen that the contact angle stays constant for $T \lesssim 30^\circ\text{C}$, increases by approximately $6\text{--}7^\circ$ while T increases from 30 to 34°C , and exhibits a plateau at higher temperatures. Such a behavior is in qualitative agreement with previous measurements on similar surfaces [23, 25]. It shows that PNIPAM is indeed grafted on the mica substrates, the sharp increase of θ_s around 32°C being the signature of the hydrophobic nature of PNIPAM above its LCST. As seen in Fig. 3, we only observe a very weak influence of brush thickness on θ_s . This indicates that wetting is mainly sensitive to the chemical composition of the outermost region of the brush, and not to its detailed structure, as already suggested in previous works [25].

III. RESULTS

We first present the effect of temperature on the measured force-thickness curves during compression of two identical brushes. The results reported in Fig. 4 have obtained with 70nm-thick brushes. The behaviors observed with thicker or thinner brushes displayed the same qualitative features. It can be seen that, as the temperature

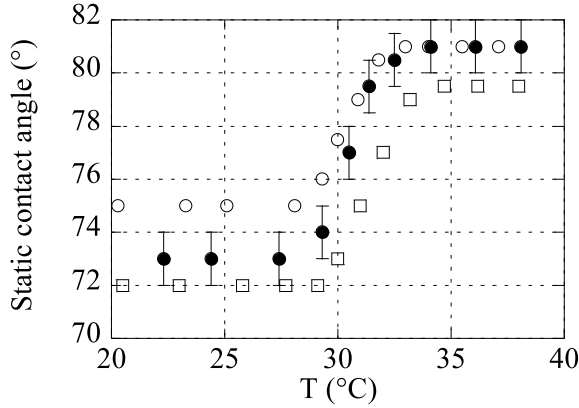


FIG. 3: Static contact angle of water as a function of temperature, measured on PNIPAM brushes of thickness: (\square) 10 nm, (\bullet) 125 nm, (\circ) 255 nm. Error bars give the resolution on angle determination, comparable to the dispersion of the results observed when measuring at various spots on a surface.

is increased from 23 to 37°C:

(i) the onset of repulsive forces occurs at smaller inter-surface separations (Fig. 4a and 4b),

(ii) full compression of the PNIPAM layers (down to their dry thickness) is reached under lower normal forces (Fig. 4a and 4b),

(iii) upon surface separation, adhesive forces build up for $T \gtrsim 30^\circ\text{C}$, and are larger at higher temperatures (Fig. 4c).

We also notice that at $T \gtrsim 35^\circ\text{C}$, in contrast to the monotonic repulsion measured at lower temperatures, attractive interactions between brushes are observed upon approach, before entering the ‘hard-wall’ repulsion regime. This is illustrated in the inset of Fig. 4a.

The effect of temperature on the range of repulsive forces is further characterized as follows. We measure, as a function of temperature, the thickness h_0 reached under a normal force of 10^{-5}N , *i.e.* under low compression. Note that the choice of such a criterion is arbitrary, it only ensures that the applied force is well above the experimental resolution, and h_0 is therefore lower than the unperturbed brush thickness [44]. We define the ratio $\alpha = h_0/h_{\text{dry}}$, which we call the ‘swelling ratio’ in the rest of the article. Fig. 5 presents the evolution of α with temperature, for different brush densities. We observe that:

(i) for all densities, α decreases gradually as T increases, displays a stronger temperature sensitivity in the range 30–35°C, and reaches, for $T \gtrsim 35^\circ\text{C}$, a constant value close to unity.,

(ii) the lower the brush density, the larger the value of α at low temperatures.

Finally, we plot on Fig. 6 the measured pull-off forces (the force needed to separate the brushes), as a function

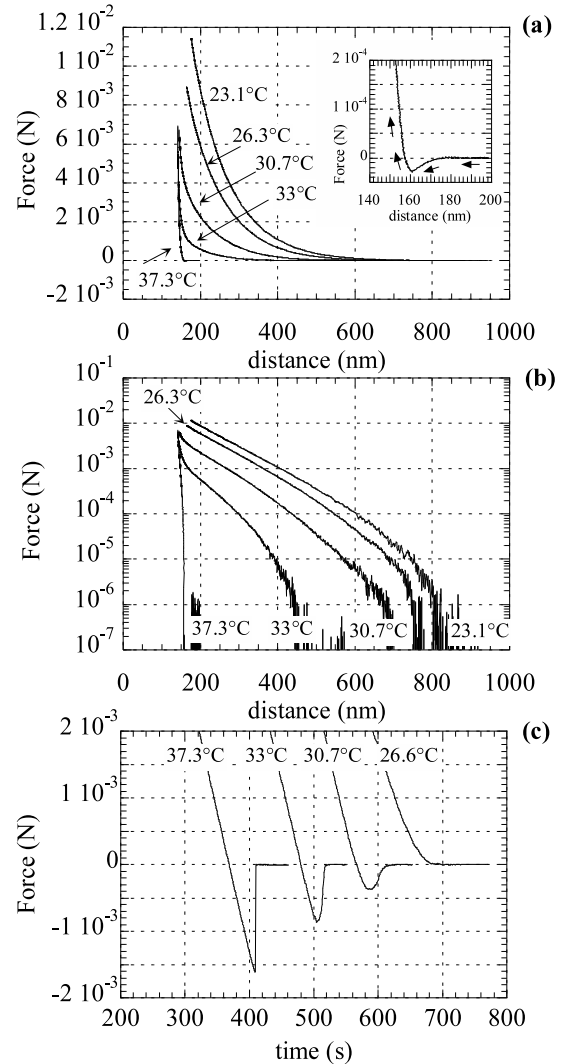


FIG. 4: (a) Force (F)-distance (D) curves measured during approach of two brushes of dry thickness 70 nm, at the temperatures indicated on the figure. Inset: close-up of the $F(D)$ curve at 37.3°C, showing attractive interaction upon approach. (b) same data as in (a), with forces displayed on a logarithmic scale. (c) Force as a function of time, during separation of two brushes of dry thickness 70 nm, measured at the indicated temperatures. The curves have been horizontally shifted in order to facilitate comparison.

of temperature, for various brush densities. It can be seen that adhesion forces between contacting brushes are independent of their grafting density, and increase with temperature above 30°C.

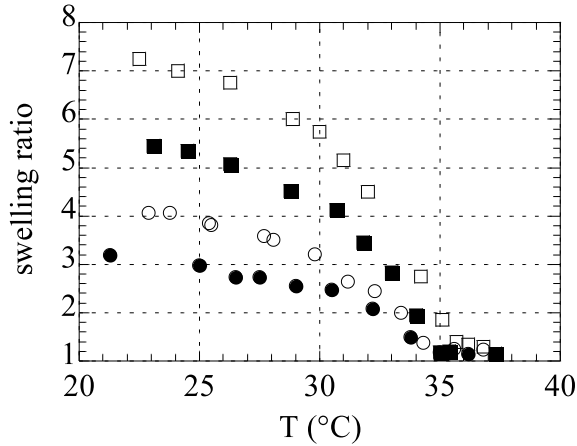


FIG. 5: Swelling ratio α as a function of temperature, for brushes of thickness: (●) 215 nm, (○) 125 nm, (■) 70 nm, (□) 10 nm.

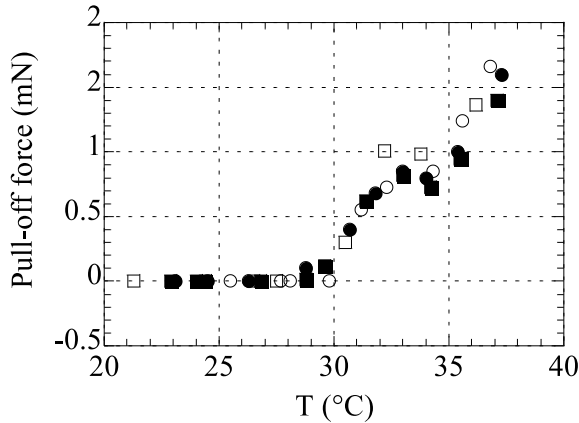


FIG. 6: Pull-off force as a function of temperature, for brushes of thickness: (●) 70 nm, (○) 125 nm, (■) 155 nm, (□) 215 nm.

IV. DISCUSSION

A. Collapse

The temperature dependence of the repulsive range reported in Fig 4a and 4b shows that the thickness of the brushes decreases as the temperature is increased: grafted chains evolve from a low temperature swollen state (with $\alpha > 1$, see Fig. 5) to a high temperature collapsed state ($\alpha \simeq 1$) where most of the solvent is expelled from the polymer layers. This result is fully consistent with the thermal response of grafted PNIPAM previously observed in experiments using AFM or SFA [20, 21, 22, 23].

Furthermore, the evolution of the swelling ratio with temperature (Fig. 5) clearly shows that the collapse of end-tethered chains, in the range of grafting densities explored here, occurs gradually rather than through a sharp coil-globule transition as observed for isolated chains in solution [12, 13]. Such a behavior, which is observed for the first time by means of force measurements, is in good agreement with results obtained from neutron reflectivity [28], surface plasmon resonance [25] or quartz-crystal microbalance [26, 27]. It is qualitatively consistent with theoretical predictions by Zhulina *et al.* [30, 31], who have shown that, due to repulsive interactions between densely grafted stretched chains, the collapse of a dense planar brush occurs gradually as the solvent strength is lowered.

Besides, it can be seen on Fig. 5 that the grafting density affects both the magnitude of swelling and the temperature sensitivity (the slope $d\alpha/dT$) of the brushes: as T increases from 30 to 35°C, α exhibits a sixfold decrease for the lowest density, whereas it drops by only a factor of 2.5 for the highest density. Such a result is of importance for applications where large and sharp thickness changes are needed, *e.g.* for efficient flow control or actuation in brush-grafted nano/microchannels [14, 16].

B. Low temperature swelling

The low temperature values of the swelling ratio indicate that under good solvent conditions, less dense brushes swell more than denser ones (Fig. 5). This result can be interpreted as follows, within the Alexander-de Gennes framework for the description of brushes in good solvent [45, 46].

The dry thickness h_{dry} of a brush is related to the grafting density by:

$$h_{\text{dry}}d^2 = Na^3 \quad (1)$$

where d is the average distance between tethering sites ($1/d^2$ is the grafting density), N is the number of monomer units per chain, and a is the monomer size. Following Alexander and de Gennes, we picture a swollen brush as formed of stretched chains subdivided into blobs of size $D_b \sim d$ (see inset of Fig. 7). The blob size is given by the following expression:

$$D_b = g^\nu a \quad (2)$$

with g the number of monomers in a blob. We discuss below the value of the exponent ν .

The swollen brush thickness is:

$$h_{\text{swell}} = n_b D_b \quad (3)$$

with $n_b = N/g$ the number of blobs per chain. Replacing D_b by d in Eq. 2 and 3, one gets for the swollen thickness:

$$h_{\text{swell}} = Na \left(\frac{d}{a} \right)^{1-1/\nu} \quad (4)$$

The ratio of the swollen to the dry thickness thus reads:

$$\alpha = \frac{h_{\text{swell}}}{h_{\text{dry}}} = \left(\frac{d}{a}\right)^{3-1/\nu} \quad (5)$$

Such a scaling is expected to break down at low enough grafting densities, *i.e.* at large d , where the swelling ratio most likely saturates at a value comparable to that of an isolated chain.

Under the assumption of semi-dilute brush (*i.e.* for an average monomer volume fraction ϕ which stays $\ll 1$), the exponent ν shall be close to $3/5$, the blob size being governed by excluded volume interactions [46]. At large monomer concentrations, for very dense brushes, it has been shown that $\nu = 3/5$ does not allow to account for the measured swollen thickness [47], and the evolution of h_{swell} with grafting density observed in reference [47] suggests that high density brushes shall be better described with gaussian blobs, *i.e.* $\nu \simeq 1/2$.

On figure 7, we plot α , measured at 23°C , as a function of $1/\sqrt{h_{\text{dry}}}$ (which is proportional to d). It can be seen that, at small d , the swelling ratio increases quasi-linearly with the distance between grafting sites, then levels off at large d as expected. The linear increase of α with d observed at small d is in good agreement with expression 5, provided that $\nu \simeq 1/2$. Such a value of ν , in agreement with previous measurements on dense brushes [47], is consistent with the fact that the average monomer concentration in the most dense brushes is large. Indeed, the volume fraction, which can be estimated as $\phi \simeq 1/\alpha$, is found to range from $1/7$ to $1/3$, values that may be too high for the assumption of semi-dilute brush to strictly hold.

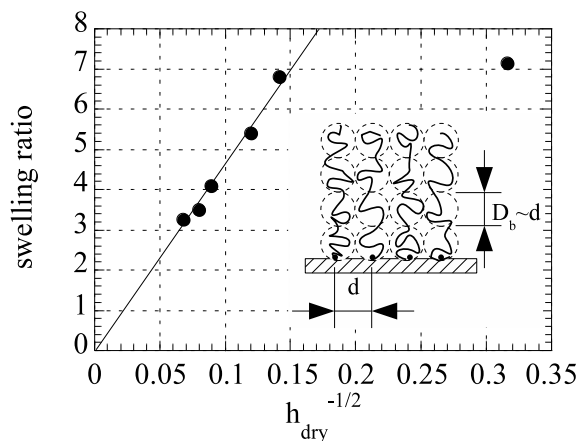


FIG. 7: Ratio α as a function of $1/\sqrt{h_{\text{dry}}}$ (in $\text{nm}^{-1/2}$). The straight line is a guide for the eye. Inset: sketch of an Alexander-de Gennes brush made of blobs of size $D_b \sim d$.

In view of the agreement obtained between the measured and predicted evolution of $\alpha(d)$ at small d , we go one step further and use Eq. 5, assuming the monomer

size to be $a \simeq 5 \text{ \AA}$ [20, 28], in order to evaluate the grafting densities of the brushes for which the linear scaling of $\alpha(d)$ holds. We thus obtain grafting densities, reported in table I, ranging from 9×10^{-4} to 4×10^{-3} chains/ \AA^2 . Next, we check the consistency of our assumption of constant N by estimating the number of monomers per chain using Eq. 1 and the calculated values of d . The polymerization indices are reported in table I, where it can be seen that the average value of N is 4200, with variations of $\pm 10\%$ from brush to brush. This corresponds to an average molecular weight of the grafted chains of 475 kg.mol^{-1} . Finally, we use the average value of N to calculate, from Eq. 1, the grafting density of the brush for which the above scaling analysis fails.

On Fig. 8, we now plot the swelling ratios, measured at low temperature for the various brushes, as a function of the estimated grafting densities. Such a representation of the data allows for direct comparison of our results with those obtained in previous experimental and theoretical studies. We thus remark that, in a range of density similar to that covered in the work by Plunkett *et al.* [23], we measure swelling ratios which are much larger than those reported in reference [23], exhibiting moreover a density dependence of opposite sign with respect to that reported by Plunkett *et al.*. We have, at this stage, no clear explanation for such a discrepancy [48]. However, we find that our data compares reasonably well with those of Yim *et al.* [28], and confirm, on brushes made of longer chains, the general trend suggested by these authors. Furthermore, we find a striking qualitative similarity between the decrease of α with $1/d^2$ observed in Fig. 8, and the prediction of Mendez *et al.* [32] for dense brushes of long chains.

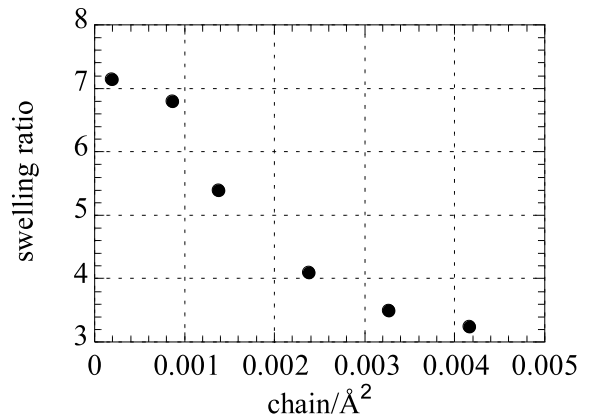


FIG. 8: Swelling ratio α as a function of brush density.

C. Compression of swollen brushes

In an attempt to better identify the monomer volume fraction above which the assumption of semi-dilute

brushes ceases to hold, we now discuss the validity of the Alexander-de Gennes framework for dense brushes under compression.

To this aim, we compare the low temperature compression curves, $F(D)/R$, with R the radius of curvature of the surfaces [49, 50], with the following prediction for the free energy per unit area of two compressed brushes [45, 51, 52]:

$$\frac{F(D)}{R} = C \left[7 \left(\frac{D}{2L} \right)^{-5/4} + 5 \left(\frac{D}{2L} \right)^{7/4} - 12 \right] \quad (6)$$

with L the unperturbed thickness of one brush, and the prefactor $C \propto k_B T L / d^3$, where k_B is the Boltzmann constant and d the distance between grafting sites.

For the different brushes studied here, we have computed $F(D)/R$ using for L the brush thickness measured at the onset of repulsion, and for d the value estimated as described above. Doing so, we find a partial agreement between predictions and measurements: the low compression end of the $F(D)/R$ profiles is reasonably well described by Eq. 6, but the prediction is found to systematically underestimate the repulsive forces under strong compression, as illustrated on Fig. 9 [53]. Moreover, we observe that the higher the brush density, the narrower the range of agreement between experiments and theory: the calculated $F(D)/R$ fails to reproduce the measurements for values of $D/2L$ lower than ~ 0.85 for the most dense brushes (Fig.9a), and for $D/2L \lesssim 0.6$ for the brushes of lowest density (Fig.9b).

The existence of a compression range over which agreement is fair may seem surprising, since we have shown in the previous section that $\alpha(d)$ was not well described under the assumption of a semi-dilute layer ($\nu \sim 1/2$ rather than $3/5$). We interpret this apparent paradox as follows. Grafted brushes most likely exhibit, as already discussed in previous studies[23, 46, 51], an outer region where the monomer density is lower than that closer to the solid substrate (*i.e.* the monomer density profile is not step-like but rather decreases smoothly to zero). The above observations thus suggest that during compression of a dense brush, a first step consists in compressing this outer region of lower density, in which the semi-dilute assumption appears to hold, until reaching an average monomer density above which the brush is stiffer than predicted.

These results show that the Alexander-de Gennes model has only a narrow range of validity when dealing with dense brushes under compression. From the measurement of the thickness D_f where predictions fail to account for the repulsive forces, one may estimate a monomer volume fraction h_{dry}/D_f , which we find in the range 0.2–0.3. We thus obtain, from force-distance measurements, an estimate of the monomer density above which the assumption of semi-dilute brushes ceases to be valid.

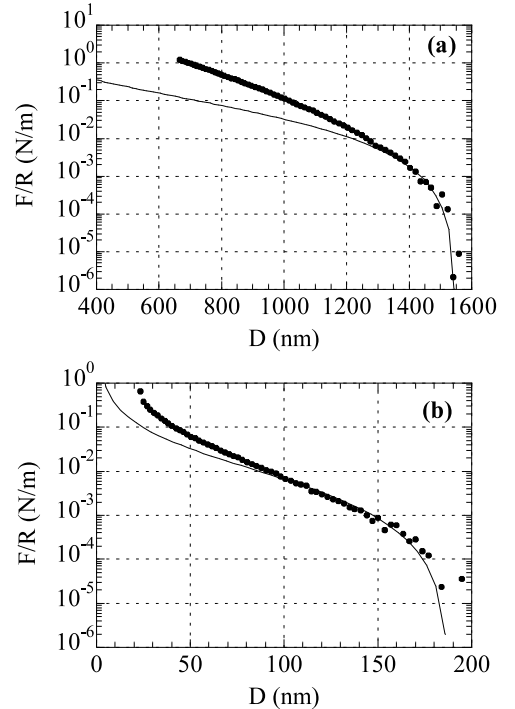


FIG. 9: Normalized force F/R as a function of brush thickness D during compression of brushes of dry thickness: (a) 215 nm, (b) 10 nm. Symbols correspond to measurements, solid lines correspond to F/R calculated with Eq. 6, using $2L = 1550$ nm in (a) and $2L = 190$ nm in (b).

D. Wetting, attractive interactions and adhesion

PNIPAM chains bear both hydrophobic (methyl- CH_3) and hydrophilic (amide- NH , and carbonyl- $\text{C}=\text{O}$) groups along their backbone. As suggested by the temperature dependence of the water contact angle (θ_s) shown on Fig. 3, the outermost layer of a PNIPAM brush is expected to be the seat of local molecular rearrangements, so that, at $T \geq 35^\circ\text{C}$, the hydrophobic groups are preferentially exposed at the interface with water. Besides, the range of temperatures over which θ_s increases roughly corresponds to the range where brush thicknesses exhibit a steeper decrease with T . This supports the idea that, as T increases and chain dehydration and collapse proceed, a growing fraction of methyl groups is exposed at the surface, until a maximum surface density of CH_3 is reached above 35°C .

Such a picture thus suggests that the attractive interaction between collapsed brushes observed at temperatures above 35°C (see Fig. 3a and reference [22]) most likely arises from the so-called hydrophobic forces that exist between methyl-terminated surfaces immersed in water [54].

Now, the measurements of pull-off forces which do not depend on grafting density (Fig. 5) indicate that adhesion between brushes in contact is, like wetting, mainly controlled by the nature of the chemical groups exposed at the interface. However, we note that while the water contact angle levels off above 35°C, pull-off forces are found to increase steadily up to 38°C. This suggests that, once the contact is established between two collapsed PNIPAM layers, some mechanism is at play, which affects interbrush adhesion but not wetting. We believe that this mechanism corresponds to the formation of interchain hydrogen bonds, between -NH and -C=O groups [55], thus contributing to increase the pull-off force. Such H-bonds are directional and require that the chemical groups involved are favorably oriented along the polymer chains. This should therefore result in a pull-off force that increases with the contact time, due to the dynamics of molecular rearrangements which limits H-bonds formation. We are currently investigating this point, which constitutes a test of the above hypothesis of specific interactions at the interface between two pnipam brushes.

V. CONCLUSIONS

We have performed a systematic study of the effect of grafting density on the collapse, compression and

adhesion of PNIPAM brushes. Our study, based on force/distance measurements in a Surface Forces Apparatus, makes use of a plasma activation technique of mica surfaces that allows for covalent grafting of PNIPAM brushes by surface-initiated ATRP. We show that the thermal response of such brushes is strongly affected by the grafting density, in good agreement with recent theoretical predictions [32]: the swelling ratio is found to decrease noticeably at high densities, a result that may have direct implications in *e.g.* nano/microscale flow control using PNIPAM brushes [14]. Furthermore, the analysis of force-compression curves provides an insight regarding the range of validity of the classical Alexander-de Gennes framework when dealing with dense brushes. Finally, we show that in contrast to the swelling behavior, adhesive forces between brushes do not seem to be affected by the grafting density of the layers. Such an observation leaves completely open the question of how brush thickness may affect cell/substrate adhesive interactions in cell culture applications of PNIPAM [17, 19].

VI. ACKNOWLEDGEMENTS

We are indebted to Christiane Caroli for her contribution to data interpretation and her precious help with polymer brush theory.

-
- [1] Luzinov, I.; Minko, S.; Tsukruk, V. V. *Prog. Polym. Sci.* **2004**, *29*, 635.
- [2] Gil, E. S.; Hudson, S. M. *Prog. Polym. Sci.* **2004**, *29*, 1173.
- [3] Cole, M. A.; Voelcker, N. H.; Thissen, H.; Griesser, H. J. *Biomaterials* **2009**, *30*, 1827.
- [4] Yakushiji, T.; Sakai, K.; Kikuchi, A.; Aoyagi, T.; Sakurai, Y.; Okano, T. *Langmuir* **1998**, *14*, 4657.
- [5] Jones, D. M.; Smith, J. R.; Huck, W. T. S.; Alexander, C. *Adv. Mater.* **2002**, *14*, 1130.
- [6] Ikeuchi, K.; Kouchiyama, M.; Tomita, N.; Uyama, Y.; Ikada, Y. *Wear* **1996**, *199*, 197.
- [7] Chang, D. P.; Dolbow, J. E.; Zauscher, S. *Langmuir* **2007**, *23*, 250.
- [8] Freeman, P. I.; Rowlinson, J. S. *Polymer* **1960**, *1*, 20.
- [9] Hirschfelder, J.; Stevensen, D.; Eyring, H. *J. Chem. Phys.* **1937**, *80*, 5340.
- [10] Goldstein, R. E. *J. Chem. Phys.* **1984**, *80*, 5340.
- [11] Schild, H. G. *Prog. Polym. Sci.* **1992**, *17*, 163.
- [12] Wu, C.; Zhou, S. Q. *Macromolecules* **1995**, *28*, 8381.
- [13] Wu, C.; Wang, X. H. *Phys. Rev. Lett.* **1998**, *80*, 4092.
- [14] Lokuge, I.; Wang, X.; Bohn, P. W. *Langmuir* **2007**, *23*, 305.
- [15] Harmon, M. E.; Tang, M.; Frank, C. W. *Polymer* **2003**, *44*, 4547.
- [16] Ernst, O.; Lieske, A.; Jager, M.; Lanke, A.; Duschl, C. *Lab Chip* **2007**, *7*, 1322.
- [17] Mizutani, A.; Kikuchi, A.; Yamato, M.; Kanazawa, H.; Okano, T. *Biomaterials* **2008**, *29*, 2073.
- [18] Nagase, K.; Kobayashi, J.; Okano, T. *J. R. Soc. Interface* **2009**, *6*, S293.
- [19] Xu, F. J.; Zhong, S. P.; Yung, L. Y. L.; Kang, E. T.; Neoh, K. G. *Biomacromol.* **2004**, *5*, 2392.
- [20] Ishida, N.; Biggs, S. *Langmuir* **2007**, *23*, 11083.
- [21] Kidoaki, S.; Ohya, S.; Nakayama, Y.; Matsuda, T. *Langmuir* **2001**, *17*, 2402.
- [22] Kaholek, M.; Lee, W. K.; Ahn, S. J.; Ma, H. W.; Caster, K. C.; LaMattina, B.; Zauscher, S. *Chem. Mater.* **2004**, *16*, 3688.
- [23] Plunkett, K. N.; Zhu, X.; Moore, J. S.; Leckband, D. *Langmuir* **2006**, *22*, 4259.
- [24] Zhu, X.; Yan, C.; Winnik, F. M.; Leckband, D. *Langmuir* **2007**, *23*, 162.
- [25] Yim, H.; Kent, M. S.; Mendez, S.; Lopez, G. P.; Satija, S.; Seo, Y. *Macromolecules* **2006**, *39*, 3420.
- [26] Liu, G.; Zhang, G. *J. Phys. Chem. B* **2005**, *109*, 743.
- [27] Annaka, M.; Yahiro, C.; Nagase, K.; Kikuchi, A.; Okano, T. *Polymer* **2007**, *48*, 5713.
- [28] Balamurugan, S.; Mendez, S.; Balamurugan, S. S.; O'Brien, M. J.; Lopez, G. P. *Langmuir* **2003**, *19*, 2545.
- [29] Dimitrov, D. I.; Milchev, A.; Binder, K. *J. Chem. Phys.* **2007**, *127*, 084905.
- [30] Zhulina, E. B.; Borisov, O. V.; Pryamitsyn, V. A.; Birshtein, T. M. *Macromolecules* **1991**, *24*, 140.
- [31] Wijmans, C. M.; Scheutjens, J. M. H. M.; Zhulina, E. B. *Macromolecules* **1992**, *25*, 2657.
- [32] Mendez, S.; Curro, J. G.; McCoy, J. D.; Lopez, G. P. *Macromolecules* **2005**, *38*, 174.
- [33] Bureau, L. *Rev. Sci. Instrum.* **2007**, *78*, 065110.
- [34] Tabor, D.; Winterton, R. H. S. *Proc. R. Soc. London*,

- Ser. A* **1969**, *312*, 435.
- [35] Israelachvili, J. N.; Tabor, D. *Proc. R. Soc. London, Ser. A* **1972**, *331*, 19.
- [36] Heuberger, M. *Rev. Sci. Instrum.* **2001**, *72*, 1700.
- [37] Bureau, L.; Arvengas, A. *Phys. Rev. E* **2008**, *78*, 061501.
- [38] Parker, J. L.; Cho, D. L.; Claesson, P. M. *J. Phys. Chem.* **1989**, *93*, 6121.
- [39] Liberelle, B.; Giasson, S. *Langmuir* **2008**, *24*, 1550.
- [40] Lego, B.; François, M.; Skene, W. G.; Giasson, S. *Langmuir* **2009**, *25*, 5313.
- [41] Malham, I. B.; Bureau, L. *Langmuir* **2009**, *25*, 5631.
- [42] Smith, A. E.; Chen, W. *Langmuir* **2008**, *24*, 12405.
- [43] Zhang, K.; Ma, J.; Zhang, B.; Zhao, S.; Li, Y.; Xu, Y.; Yu, W.; Wang, J. *Mater. Lett.* **2007**, *61*, 949.
- [44] When thermal stability of the SFA allowed for a force resolution of $\sim 10^{-7}$ N, we have measured h_0 under a lower normal load of 10^{-6} N, *i.e.* closer to the unperturbed thickness. This resulted in an increase of h_0 of 10% for the thicker brush and of 20% for the thinner. Therefore, the values of the ratio α reported in the text are most likely 10 to 20% lower than the “true” swelling ratio, as it could be measured using non-perturbing techniques like neutron reflectivity [28].
- [45] Alexander, S. *J. Phys. (Paris)* **1977**, *38*, 983.
- [46] de Gennes, P. G. *Macromolecules* **1980**, *13*, 1069.
- [47] Yamamoto, S.; Ejaz, M.; Tsujii, Y.; Fukuda, T. *Macromolecules* **2000**, *33*, 5608.
- [48] We only note that the molecular weight we evaluate is larger than what have been reported in references[23]. This might account for some differences regarding the magnitude of brush swelling/collapse observed in our study and in the work by Plunkett *et al.*[23]. Indeed, recent calculations by Mendez *et al.* indicates that the higher the molecular weight of grafted chains, the larger the difference between swollen and collapsed thicknesses [32].
- [49] Within the Derjaguin approximation, $F(D)/R$ is proportional to the interaction free energy per unit area [50].
- [50] Israelachvili, J. *Intermolecular and Surface Forces*; Academic Press: London, 1992.
- [51] Heuberger, M.; Drobek, T.; Spencer, N. D. *Biophys. J.* **2005**, *88*, 495.
- [52] Dunlop, I. E.; Briscoe, W. H.; Titmuss, S.; Sakellariou, G.; Hadjichristidis, N.; Klein, J. *Macromol. Chem. Phys.* **2004**, *205*, 2443.
- [53] Letting L as a free parameter in Eq. 6 in order to fit the measured curves over a larger range of D only resulted in unrealistically small values of L .
- [54] Christenson, H. K.; Claesson, P. M. *Adv. Colloid Interface Sci.* **2001**, *91*, 391.
- [55] Cheng, H.; Shen, L.; Wu, C. *Macromolecules* **2006**, *39*, 2325.