

# Exact Volume Preserving Skinning with Shape Control

Damien ROHMER,  
Stefanie HAHMANN,  
Marie-Paule CANI

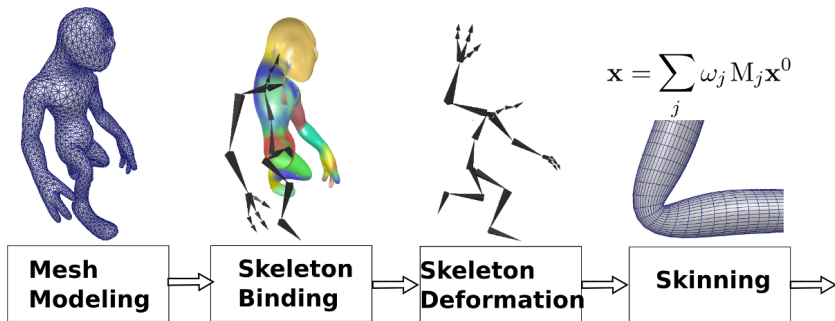
Grenoble University, France

Symposium on Computer Animation 2009, New Orleans,  
USA

# Classical character animation pipeline

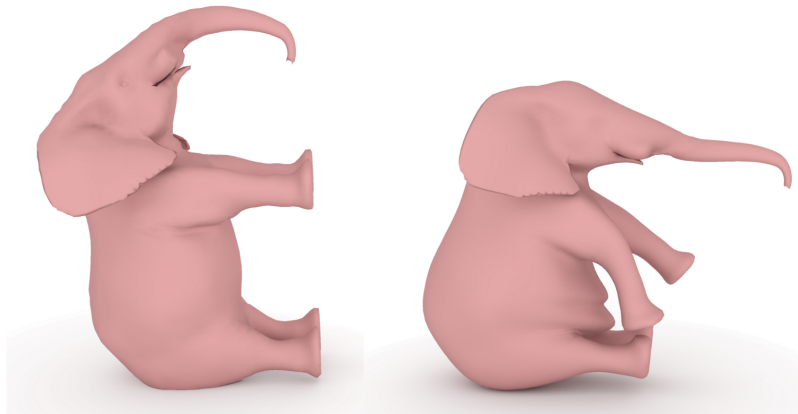
## Interactive character deformation

- Skinning deformation  
(Skeleton Subspace Deformation)



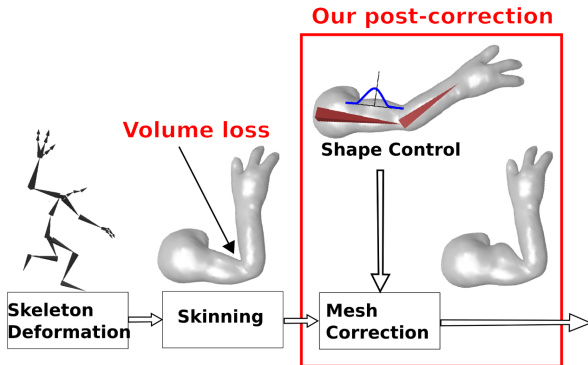
# Motivations: character animation

- Fits into the **standard pipeline**.
- **Interactive** deformation.
- **Natural**-looking behavior  $\Rightarrow$  Constant volume.
- Intuitive **control**.



# Volume correction: Overview

- **Post-process** volume correction on skeleton deformed shaped.
- **Exact** volume preservation.
- Controllable using **1D profil curve**.



# Previous work: Skinning deformation

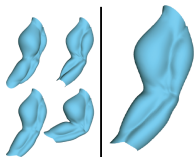
## ■ Training based approaches

( ⊕ Freedom, ⊖ Need of training poses)

[Lewis *et al.*, SIGGRAPH 2000]

[Wang *et al.*, SCA 2002]

[Weber *et al.*, EG 2007]



## ■ Mathematical interpolation improvement

[Angelidis and Singh SCA 2007]

( ⊕ Constant volume, ⊖ Control)

[Kavan *et al.* TOG 2008]

( ⊕ General, ⊖ No constant volume)

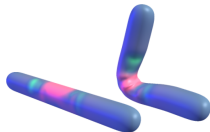


## ■ Geometrical constraints

( ⊕ Constant volume, ⊖ Control)

[Funck *et al.* VMV 2008]

[Rohmer *et al.* PG 2008]

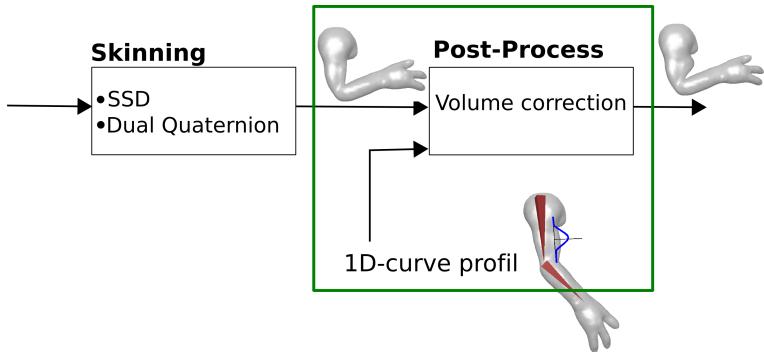


# Improvements from our previous work

	[Rohmer <i>et al.</i> PG 2008]	Our Method
<b>Constant volume</b>	approximated	exact
<b>Final shape control</b>	skinning weights	1D-profil curve
<b>Deformation space</b>	$\mathbb{R}^N$	$\mathbb{R}^{3N}$
<b>Mesh</b>	triangles	triangles+quads
<b>Overlapping deformation</b>	no	yes

# Overview

- 1 Exact volume compensation
- 2 Local control of the deformation
- 3 Application to complex characters



# Enclosed volume of the mesh

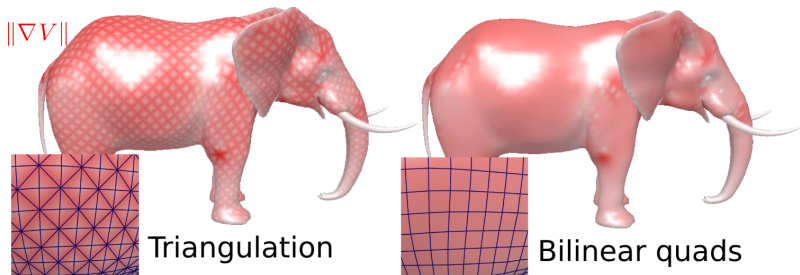
## ■ Triangular mesh

[Gonzalez-Ochoa 99]

$$V = \sum_{\text{triangles}} V_t = \sum_{\text{triangles}} z_{avg} \mathcal{A}$$

## ■ Quadrangular mesh

$$V = \sum_{\text{quads}} V_q = \sum_{\text{quads}} \mathbf{z} \mathbf{M} \mathbf{k}^T$$

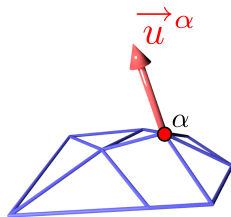




# Volume correction expression

- Per-Vertex displacement  $\mathbf{u}$

$$\begin{cases} \min & \sum \|\mathbf{u}\|^2 \\ \text{constraint to} & V(\mathbf{p} + \mathbf{u}) = V_0 \end{cases}$$



- Lagrange multipliers expression

$$\Lambda(\mathbf{u}, \lambda) = \sum_i \|\mathbf{u}_i\|^2 + \lambda (V(\mathbf{p} + \mathbf{u}) - V_0)$$

- $V$  is trilinear in  $(\mathbf{u}_x, \mathbf{u}_y, \mathbf{u}_z)$ .

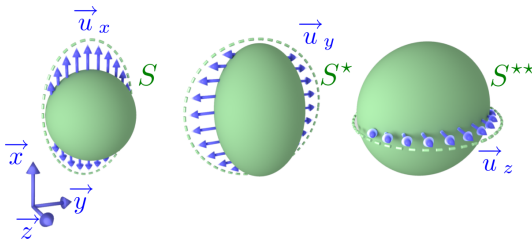
# Exact closed-form correction in 3 steps

■ Extend the idea from [Elber, Technion report 2000]:

- 1 Deform along  $x$  and correct  $\mu_0$  % of the volume.
- 2 Deform along  $y$  and correct  $\mu_1$  % of the volume.
- 3 Deform along  $z$  and correct  $\mu_2$  % of the volume.

$$\mathbf{u}_i = (u_x, u_y, u_z)$$
$$= \Delta V \left( \mu_0 \frac{\nabla_{x_j} V}{\sum_k \|\nabla_{x_k} V\|^2}, \mu_1 \frac{\nabla_{y_j} V^*}{\sum_k \|\nabla_{y_k} V^*\|^2}, \mu_2 \frac{\nabla_{z_j} V^{**}}{\sum_k \|\nabla_{z_k} V^{**}\|^2} \right)$$

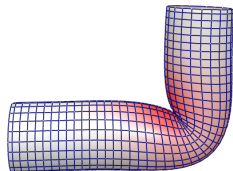
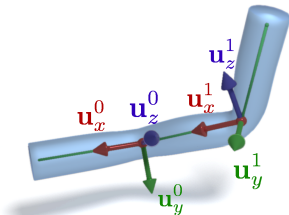
$$\mu_0 + \mu_1 + \mu_2 = 1 \Rightarrow \text{exact volume preservation.}$$



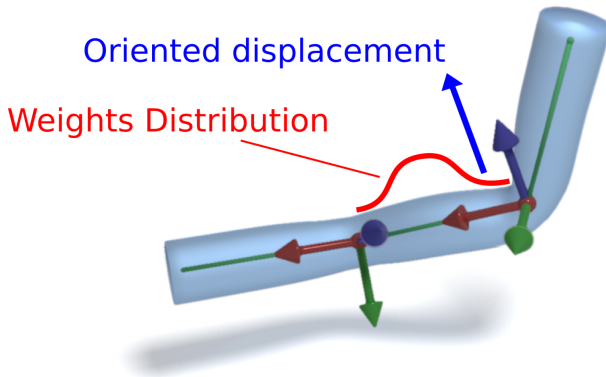
# Localizing the deformation

- Use of local frames for each joint.
- Use of vertex-displacement weights

$$\begin{cases} \min \\ \text{constraint to} \end{cases} \sum_{\text{vertices } i} \frac{\|\mathbf{u}_i\|^2}{\gamma_i}$$
$$V(\mathbf{p} + \mathbf{u}) = V_0$$

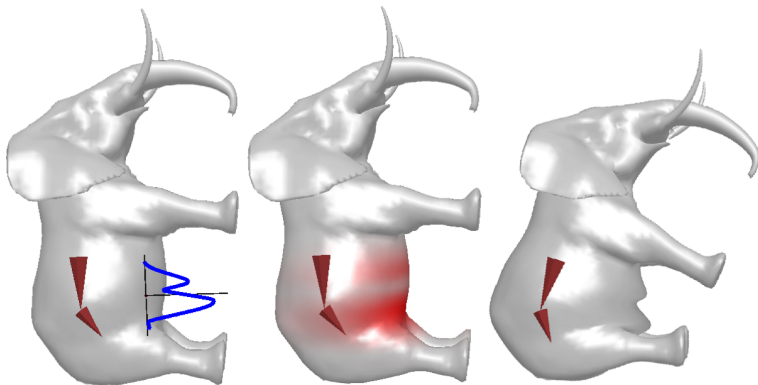


# 1D-Profil curve

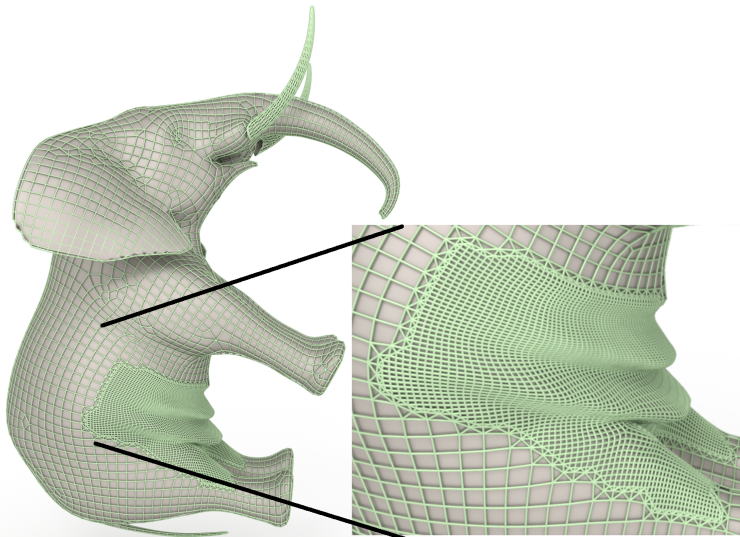


## **Application to complex characters**

# Animal animation

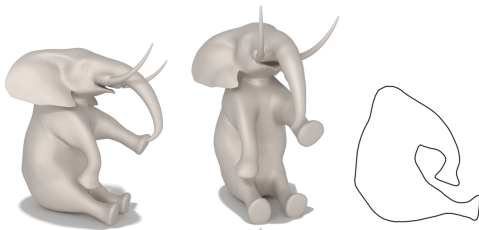


# Adaptative refinement

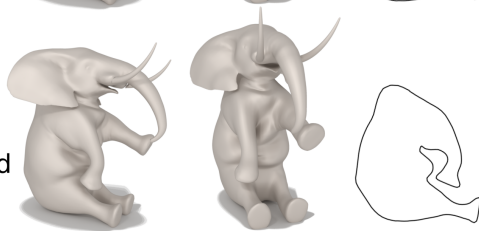


# Overlapping deformations

SSD



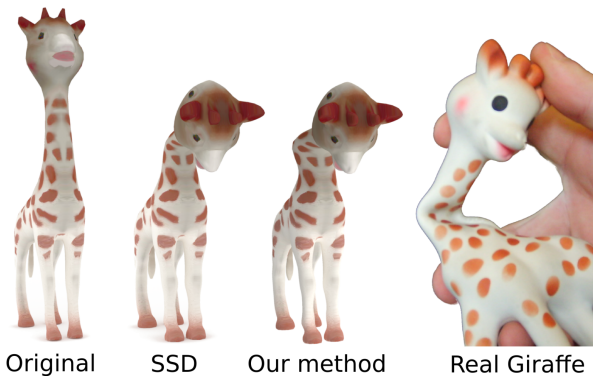
Our  
method





# Giraffe deformation

- Rubber effect automatically oriented



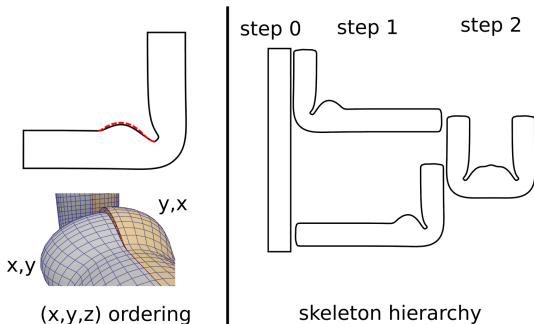
Video

# Computational Time

	vertices	joint number	cost
giraffe	1673	1	0.011s
elephant	6646	1	0.053s
subdivided elephant	13439	1	0.110s
elephant	6646	17	0.407s

# Limitations

- $\Delta V$  is computed globally (computation time).
  - Tradeoff: **Speed VS Local limitations.**
- Ordering in  $x, y, z$  deformation ( $20\%r$ ).
- Ordering in skeleton hierarchy ( $< 2\%r$ ).



# Conclusion and future work

## Advantages

- Exact volume preservation.
- Controlability using 1D-curve profil.
- No limitation on locality, overlapping influences.

## Future Work

- Build a GUI / Profil sketch.
- Local cutting to compute  $\Delta V$  locally.
- Self collision.

# Thank you

