



**HAL**  
open science

# Modelling and Linear Control of a Buoyancy-Driven Airship

Xiaotao . Wu, Claude Moog, Yueming Hu

► **To cite this version:**

Xiaotao . Wu, Claude Moog, Yueming Hu. Modelling and Linear Control of a Buoyancy-Driven Airship. The 7th Asian Control Conference, Aug 2009, Hong Kong, China. pp.6. hal-00405211

**HAL Id: hal-00405211**

**<https://hal.science/hal-00405211>**

Submitted on 20 Jul 2009

**HAL** is a multi-disciplinary open access archive for the deposit and dissemination of scientific research documents, whether they are published or not. The documents may come from teaching and research institutions in France or abroad, or from public or private research centers.

L'archive ouverte pluridisciplinaire **HAL**, est destinée au dépôt et à la diffusion de documents scientifiques de niveau recherche, publiés ou non, émanant des établissements d'enseignement et de recherche français ou étrangers, des laboratoires publics ou privés.

# Modelling and Linear Control of a Buoyancy-Driven Airship

Xiaotao WU Claude H. MOOG and Yueming HU

**Abstract**—We describe the modelling and control of a new-kind airship which is propelled by buoyancy. Based on the Newton-Euler equations and Kirchhoff equations, and referred to the models of underwater gliders and aircraft, a 6DOF nonlinear mathematical model of a buoyancy-driven airship is derived, with features distributed internal mass, and no thrust, elevators and rudders. The attitudes are controlled by the motion of internal mass. The performances of the airship are studied in the vertical plane. A linear feedback controller is derived for the nonlinear model. The results of simulation display robustness properties of the controllers to disturbances.

## I. INTRODUCTION

Stratospheric platforms or high altitude platforms, which locate 17-22 km above the ground, and keep quasi-geostationary positions, attract an increasing research interest for these recent ten years. Such a platform has the potential capability to serve as a wireless communication relay station and as a high resolution observing station [1], [2], [3].

A high altitude unmanned airship as this platform has the following features; driven by solar power makes it long-endurance in high altitude, and generally this platform can take 1000 kg to 3000 kg payload which is a low cost methods to carry out similar functions of satellites. A conventional airship is driven forward by propulsors along the hull, the attitude is controlled by elevators and rudders or vector-propulsors.

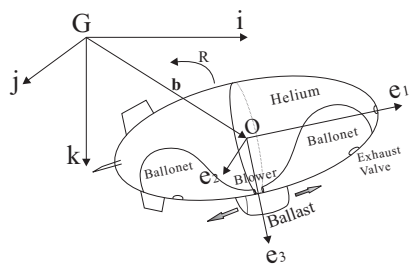


Fig. 1. Structure of Buoyancy-Driven Airship

Buoyancy-driven airships move forward by a cyclic change of the net buoyancy of the craft and of the position of ballast. This concept of airship comes from underwater gliders who replace traditional thrust propulsion by a cyclic

This work was supported by CSC

X. WU is with Institut de Recherche en Communications et Cybernétique de Nantes, 1 rue de la Noë, 44321, Nantes, France, and South China University of Technology [xiaotao.wu@ircsyn.ec-nantes.fr](mailto:xiaotao.wu@ircsyn.ec-nantes.fr)

C. H. MOOG is with Institut de Recherche en Communications et Cybernétique de Nantes, [claudio.moog@ircsyn.ec-nantes.fr](mailto:claudio.moog@ircsyn.ec-nantes.fr)

Y. HU is with South China University of Technology, [aumhu@scut.edu.cn](mailto:aumhu@scut.edu.cn)

change of the net buoyancy and of the position of the centroid, which has been proved to be efficient in water [4]. Underwater gliders cruise for long distances consumed little power. The structure of this new-kind airship see Figure 1. The blower is used to fill an impermeable inner bladder with ambient air, and the valve is used to release the inner air. The ballast can move in the horizontal plane.

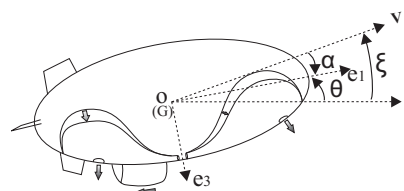


Fig. 2. Ascent of the Buoyancy-Driven Airship

The mechanism of operating this kind of airship is as follows. When releasing air from ballonets, the mass of the airship reduces, the lift becomes positive. Accompanying the ballast moves to the tail, the airship gets a positive pitch angle  $\theta$ , and moves upward and forward, see Figure 2. Oppositely, when pumping air into ballonets, the airship mass increases, the lift decreases and becomes minus. Accompanying the ballast moving to the head, the airship gets a negative pitch angle  $\theta$ , and moves downward and forward, see Figure 3. If the ballast is moving to side, then the airship will roll. Due to the coupling of roll and rotation moments, the airship flies to the right or the left.

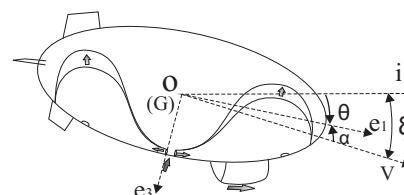


Fig. 3. Descent of the Buoyancy-Driven Airship

The environment of high altitude is quite different from underwater. Comparing with incompressible water, air is compressible. The density, temperature, and pressure of atmosphere is changing with the change of altitude. All of this make high altitude airship have some differences from underwater gliders, and more difficult to control.

At present, most research on airship control is based on airships with actuators-thrusts and elevators [5]-[8]. Almost no paper discusses the possibility of airship driven by buoyancy, just as underwater gliders. The only monograph available on buoyancy-driven airship is the doctoral disserta-

tion [9]. This pioneering study includes the effect of various atmospheric conditions. However, the complete mathematical model of 6DOF is not given, and the control method also needs to be improved.

The contributes in the rest of this paper are as follows. The complete equations of 6DOF motion are given for the first time for a high altitude airship only driven by buoyancy. It includes the modelling of the ballast and the ballonets. This full model is derived from the model of the underwater glider. Dynamic performances have been studied, and a linear controller have been tested.

In section II, the mathematical model of a high altitude buoyancy-driven airship is derived. In section III, the model is specialized to the vertical plane. Then the nonlinear model has been linearized, the static stability and controllability has been analysed. In section IV, a LQR controller has been derived for the nonlinear system and the simulations are presented.

## II. AIRSHIP DYNAMIC MODELLING

### A. Kinematics

Figure 1 shows the assignment of the two frames. The body frame  $\{O, e_1, e_2, e_3\}$  is assigned with the reference point  $O$  at the center of hull, overlapped with the center of buoyancy CB. The inertial  $\{G, i, j, k\}$  frame is fixed to the earth, with the axis  $k$  along the direction of gravity [8].

To reduce the drag of the body, the hull of airship is designed to have a high *volume/surface – area* ratio. The shape comes from revolving of an airfoil profile. The airfoil profile can be chosen from NACA series of US. A ellipsoid has been used to represent that special shape for simple in this paper, and given that the equatorial radii and the polar radius are  $7m$ ,  $3m$  and  $3m$  respectively.

The rotation matrix between the body frame and the inertial frame is represented by  $\mathbf{R}_1$  which is composed by the pitch angle  $\theta$ , the yaw angle  $\psi$  and the roll angle  $\phi$ . The position of the airship in the inertial frame is represented by vector  $\mathbf{b} = (x, y, z)^T \in \mathbb{R}^3$ , see Figure 1.  $\mathbf{R}_1 \in SO(3)$ ,  $SO(3)$  is  $3 \times 3$  special orthogonal matrix, defined as follows:

$$SO(3) = \{\mathbf{R}_1 \in \mathbb{R}^{3 \times 3} | \mathbf{R}\mathbf{R}^T = \mathbf{I}, \det \mathbf{R} = 1\}$$

here  $\mathbf{I}$  denotes a  $3 \times 3$  identity matrix. The attitude and position of the airship is decided by  $(\mathbf{R}_1, \mathbf{b})$ . So the configuration space of the system is defined as:

$$SE(3) = \{(\mathbf{b}, \mathbf{R}_1) | \mathbf{b} \in \mathbb{R}^3, \mathbf{R}_1 \in SO(3)\} = \mathbb{R}^3 \times SO(3)$$

$SE(3)$  can be represented by homogeneous coordinates, as follows:

$$\begin{pmatrix} \mathbf{R}_1 & \mathbf{b} \\ 0 & 1 \end{pmatrix} \in SE(3)$$

$SE(3)$  is a rotation matrix group. For example, if  $G \in SE(3)$ , then  $G$  is a transformation matrix of the rigid body from body frame to the inertial frame [10].

Let  $\mathbf{V} = (v_1, v_2, v_3)^T$  and  $\mathbf{\Omega} = (\Omega_1, \Omega_2, \Omega_3)$  denote the velocity and the angular velocity in the body frame respectively. So the position and the attitude of the airship

can be described by the Lie algebra of  $SE(3)$ , denoted as the group  $se(3)$ . It is as follows:

$$\begin{pmatrix} \hat{\Omega} & \mathbf{V} \\ 0 & 0 \end{pmatrix} \in se(3)$$

Define the operator  $\wedge$  for a vector  $\mathbf{x} = (x_1, x_2, x_3)^T \in \mathbb{R}^3$ ,

$$\hat{\mathbf{x}} = \begin{pmatrix} 0 & -x_3 & x_2 \\ x_3 & 0 & -x_1 \\ -x_2 & x_1 & 0 \end{pmatrix}$$

and  $\hat{\mathbf{x}} \in so(3)$ , where  $so(3)$  is the Lie algebra of  $SO(3)$ . The kinematics of the airship are given by

$$\begin{pmatrix} \dot{\mathbf{R}}_1 & \dot{\mathbf{b}} \\ 0 & 0 \end{pmatrix} = \begin{pmatrix} \mathbf{R}_1 & \mathbf{b} \\ 0 & 1 \end{pmatrix} \begin{pmatrix} \hat{\Omega} & \mathbf{V} \\ 0 & 0 \end{pmatrix} \quad (1)$$

### B. Mass Distribution and Definition

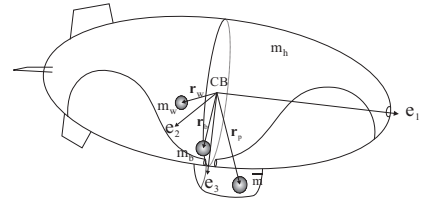


Fig. 4. Mass Distribution

The airship described in this paper is driven by the buoyancy and the ballast, just like some underwater gliders [11]. To set up the mathematical model, The entire mass of airship have to be splitted into several terms. Let  $m_h$  denote the uniformly distributed hull mass,  $m_b$  is the variable mass of ballonets,  $\bar{m}$  is the mass of the inside movable ballast, and  $m_w$  denotes other inside fixed masses whose centroid offset from CB.  $\mathbf{r}_p = (r_{p1}, r_{p2}, r_{p3})^T$ ,  $\mathbf{r}_b$  and  $\mathbf{r}_w$  are the vectors from CB to the mass points of ballast, the ballonet and  $m_w$ , see Figure 4.

The mass  $m_s$  is the total stationary mass, thus  $m_s = m_h + m_b + m_w$ . The total mass of the vehicle is  $m_v$ , so we have:  $m_v = m_s + \bar{m} = m_h + m_b + m_w + \bar{m}$ . Let  $m = \rho_a \nabla$  is the buoyancy of the airship with volume  $\nabla$ . Thus, the net buoyancy of the airship is  $m_0 = m_v - m$ . In this paper,  $m_h = 269 \text{ kg}$ ,  $\bar{m} = 30 \text{ kg}$ , and  $m_w$ ,  $\mathbf{r}_b$  and  $\mathbf{r}_w$  are neglected.

### C. Fluid Inertia Forces and Added Mass

The inertia of airships with a large *Volume/Mass* ratio is much more significant in comparison with conventional airplanes. So, fluid inertial forces should be considered.

In the case of the motion of a rigid body in an ideal fluid with velocity  $v_i$  in the direction  $i$ , the force acted on the rigid body by the fluid in the direction  $j$  is  $R_j = -m_{ij} \dot{v}_i$  and the parameter  $m_{ij}$  is called the added mass. There are 36 added masses for a rigid body in motion; the matrix  $\mathbf{M}_{add}$  including those added masses is called the inertia matrix [5].

$$\mathbf{M}_{add} = \begin{pmatrix} \mathbf{M}_f & * \\ * & \mathbf{J}_f \end{pmatrix}$$

$\mathbf{M}_f$  is the symmetric  $3 \times 3$  added mass matrix;  $\mathbf{J}_f$  is the added inertia matrix; and the other two blocks are added

cross terms which are neglected. Here, It is supposed that the airship is centrosymmetric, so only elements on the diagonal are nonzero, other elements are zero because of symmetry. So,  $\mathbf{M}_f = \text{diag}\{m_{11} \ m_{22} \ m_{33}\}$  and  $\mathbf{J}_f = \text{diag}\{m_{44} \ m_{55} \ m_{66}\}$ . In this paper,  $m_{11} = 0.8m_h$ ,  $m_{33} = m_h$  and  $m_{55} = 1.3J_{yy}$ .  $J_{yy}$  is the moment of inertia of the airship around y axis, and approximately,  $J_{yy} = m(a^2 + b^2)/5 \approx 3500 \text{ kg} \cdot \text{m}^2$ .

In an ideal fluid, the kinetic energy  $T_{add}$  of fluid disturbances is

$$T_{add} = \frac{1}{2} \sum_{i=1}^6 \sum_{j=1}^6 m_{ij} \zeta_i \zeta_j = \frac{1}{2} (m_{11} v_1^2 + m_{22} v_2^2 + m_{33} v_3^2 + m_{44} \Omega_1^2 + m_{55} \Omega_2^2 + m_{66} \Omega_3^2)$$

here  $\zeta_1 = v_1, \zeta_2 = v_2, \zeta_3 = v_3, \zeta_4 = \Omega_1, \zeta_5 = \Omega_2, \zeta_6 = \Omega_3$ . The momenta  $\mathbf{B} = (B_1, B_2, B_3)^T$  and moments of momentum  $\mathbf{K} = (B_4, B_5, B_6)^T$  of fluid disturbances are related to the kinetic energy  $T_{add}$ :

$$B_i = \frac{\partial T_{add}}{\partial \zeta_i} \quad (i = 1, 2, \dots, 6)$$

So,

$$\begin{aligned} \mathbf{B} &= \mathbf{M}_f \mathbf{v} \\ \mathbf{K} &= \mathbf{J}_f \boldsymbol{\Omega} \end{aligned}$$

So, the inertial forces  $\mathbf{F}_I$  and moments  $\mathbf{M}_I$  acting on the airship are as follows

$$\begin{aligned} \mathbf{F}_I &= -\frac{d\mathbf{B}}{dt} = -\left(\frac{d\tilde{\mathbf{B}}}{dt} + \boldsymbol{\Omega} \times \mathbf{B}\right) \\ &= -\mathbf{M}_f \dot{\mathbf{v}} + \mathbf{M}_f \mathbf{v} \times \boldsymbol{\Omega} \end{aligned} \quad (2)$$

$$\begin{aligned} \mathbf{M}_I &= -\frac{d\mathbf{K}}{dt} = -\left(\frac{d\tilde{\mathbf{K}}}{dt} + \boldsymbol{\Omega} \times \mathbf{K} + \mathbf{v} \times \mathbf{B}\right) \\ &= -\mathbf{J}_f \dot{\boldsymbol{\Omega}} + \mathbf{J}_f \boldsymbol{\Omega} \times \boldsymbol{\Omega} + \mathbf{M}_f \mathbf{v} \times \mathbf{v} \end{aligned} \quad (3)$$

here,  $\frac{d\mathbf{B}}{dt}, \frac{d\mathbf{K}}{dt}$  denote the time-derivative of momentum  $\mathbf{B}$  and angular momentum  $\mathbf{K}$  with respect to the inertial frame,  $\frac{d\tilde{\mathbf{B}}}{dt}$  and  $\frac{d\tilde{\mathbf{K}}}{dt}$  denote the time-derivative in the body frame.

#### D. Aerodynamic forces and moments

Different pneumatic pressures are distributed on the surface of a vehicle flying in the atmosphere. The effect of those pneumatic pressures can be presented by aerodynamic forces  $\mathbf{F}_a$  and moments  $\mathbf{M}_a$  as follows,

$$\begin{aligned} \mathbf{F}_a &= (X_a, Y_a, Z_a) \\ \mathbf{M}_a &= (L_a, M_a, N_a) \end{aligned}$$

The aerodynamic forces are contributing by the forces and moments on the hull and fin and act on the center of buoyancy  $\mathbf{CB}$ . By convention, the decomposed aerodynamic forces lie in the velocity frame (also called the wind frame), and the moments are decomposed in the body frame [6].

$$\text{Drag} : X_a = \frac{1}{2} \rho_a \mathbf{V}^2 (S_h C_{x1} + S_f C_{x2})$$

$$\text{Sideforce} : Y_a = \frac{1}{2} \rho_a \mathbf{V}^2 (S_h C_{y1} + S_f C_{y2})$$

$$\text{Lift} : Z_a = \frac{1}{2} \rho_a \mathbf{V}^2 (S_h C_{z1} + S_f C_{z2})$$

$$\text{Roll moment} : L_a = \frac{1}{2} \rho_a \mathbf{V}^2 (S_h l_{h1} C_{l1} + S_f l_{f1} C_{l2})$$

$$\text{Pitch moment} : M_a = \frac{1}{2} \rho_a \mathbf{V}^2 (S_h l_{h2} C_{m1} + S_f l_{f2} C_{m2})$$

$$\text{Yaw moment} : N_a = \frac{1}{2} \rho_a \mathbf{V}^2 (S_h l_{h3} C_{n1} + S_f l_{f3} C_{n2})$$

here,  $\rho_a$  is the density of ambient air,  $S_h$  and  $S_f$  are the reference areas of hull and fin,  $l_{h1}, l_{h2}, l_{h3}$  and  $l_{f1}, l_{f2}, l_{f3}$  are the distances from the  $\mathbf{CB}$  to the aerodynamic center of the hull and fin. The  $C_i$ 's are the aerodynamic coefficients which are computed from wind tunnel experiments. Those coefficients do mainly depend on the angle of attack  $\alpha$  and the sideslip angle  $\beta$ .

Since  $\mathbf{F}_a$  is respected to the velocity frame,  $\mathbf{F}_a$  is transferred to the body frame, which denotes by  $\mathbf{F}_{at}$ .

$$\mathbf{F}_{at} = \begin{pmatrix} \cos \alpha \cos \beta & \cos \alpha \sin \beta & -\sin \alpha \\ -\sin \beta & \cos \beta & 0 \\ \sin \alpha \cos \beta & \sin \alpha \sin \beta & \cos \alpha \end{pmatrix} \mathbf{F}_a = \mathbf{R}_2 \mathbf{F}_a \quad (4)$$

where  $\mathbf{R}_2$  is the transfer matrix from the velocity frame to the body frame.  $\mathbf{M}_a$  is respected to the body frame, so,

$$\mathbf{M}_{at} = \mathbf{M}_a \quad (5)$$

#### E. Gravity and Buoyancy

In the inertial frame, the composite effect of gravity and buoyancy along the axis of inertial frame is denoted by  $\mathbf{F}_{GB}$  as follows,

$$\mathbf{F}_{GB} = m_0 g \mathbf{k}$$

where,  $\mathbf{k}$  is a unit vector pointing in the direction of gravity.  $\mathbf{F}_{GB}$  is transferred to the body frame as follows,

$$\mathbf{F}_{GBt} = \mathbf{R}_1^T \mathbf{F}_{GB} = m_0 g \mathbf{R}_1^T \mathbf{k} \quad (6)$$

It is assumed that the centroid of the stationary mass  $m_s$  is on  $\mathbf{CB}$ . So there is no moment which is caused by  $m_s$  and the buoyancy of the airship. Only the ballast have moments since  $\mathbf{r}_p$  is not zero. In the inertial frame, the moment is

$$\mathbf{M}_{GB} = m_0 g \mathbf{r}_s \times \mathbf{k}$$

which is transferred to the body frame as follows,

$$\mathbf{M}_{GBt} = \mathbf{R}_1^T \mathbf{M}_{GB} = m_0 g \mathbf{R}_1^T \mathbf{r}_s \times \mathbf{k} \quad (7)$$

#### F. Dynamics of the Ballast

Let  $\mathbf{r}_p$  be the position of the ballast in the body frame. If the airship is rotating with angular velocity  $\boldsymbol{\Omega}$ . According to the relation between the absolute velocity and the relative velocity, the absolute velocity of the ballast in the body frame  $\mathbf{v}_p$  is as follows,

$$\mathbf{v}_p = \mathbf{v} + \dot{\mathbf{r}}_p + \boldsymbol{\Omega} \times \mathbf{r}_p$$

Let  $\mathbf{B}_p = (B_{p1}, B_{p2}, B_{p3})^T$  denote the momentum of the ballast, and  $\mathbf{u} = (u_1, u_2, u_3)^T$  denote the total external force acting on the ballast. Both  $\mathbf{B}_p$  and  $\mathbf{u}$  are with respect to the body frame. So that,

$$\mathbf{B}_p = \bar{m}\mathbf{v}_p = \bar{m}(\mathbf{v} + \dot{\mathbf{r}}_p + \boldsymbol{\Omega} \times \mathbf{r}_p) \quad (8)$$

$$\dot{\mathbf{B}}_p = \mathbf{u} \quad (9)$$

From (8), one gets,

$$\dot{\mathbf{r}}_p = \frac{1}{\bar{m}}\mathbf{B}_p - \mathbf{v} - \boldsymbol{\Omega} \times \mathbf{r}_p \quad (10)$$

### G. Model

Let  $\mathbf{B}_{total}$  and  $\mathbf{K}_{total}$  be the total momentum and the total moment of momentum of the airship. one gets,

$$\mathbf{B}_{total} = m_s\mathbf{v} + \mathbf{B}_p \quad (11)$$

$$\mathbf{K}_{total} = \mathbf{J}_s\boldsymbol{\Omega} + \mathbf{r}_p \times \mathbf{B}_p \quad (12)$$

here  $\mathbf{J}_s$  is the matrix of the moment of inertia of the airship.

Let  $\mathbf{F}_{total}$  and  $\mathbf{M}_{total}$  be the total external force and the total moment of the airship. From equation (2) to (7),  $\mathbf{F}_{total}$  and  $\mathbf{M}_{total}$  be computed as follows,

$$\mathbf{F}_{total} = \mathbf{F}_I + \mathbf{F}_{at} + \mathbf{F}_{GBt} \quad (13)$$

$$= -\mathbf{M}_f\dot{\mathbf{v}} + \mathbf{M}_f\mathbf{v} \times \boldsymbol{\Omega} + m_0g\mathbf{R}_1^T\mathbf{k} + \mathbf{F}_{at}$$

$$\mathbf{M}_{total} = \mathbf{M}_I + \mathbf{M}_{at} + \mathbf{M}_{GBt} \quad (14)$$

$$= -\mathbf{J}_f\dot{\boldsymbol{\Omega}} + \mathbf{J}_f\boldsymbol{\Omega} \times \boldsymbol{\Omega} + \mathbf{M}_f\mathbf{v} \times \mathbf{v} + m_0g\mathbf{R}_1^T\mathbf{r}_s \times \mathbf{k} + \mathbf{M}_{at}$$

Similar to equation (2) and (3),  $\mathbf{F}_{total}$  and  $\mathbf{M}_{total}$  are derived from (11) and (12) as follows,

$$\mathbf{F}_{total} = \frac{d\mathbf{B}_{total}}{dt} = \frac{d\tilde{\mathbf{B}}_{total}}{dt} + \boldsymbol{\Omega} \times \mathbf{B}_{total}$$

$$\mathbf{M}_{total} = \frac{d\mathbf{K}_{total}}{dt} = \frac{d\tilde{\mathbf{K}}_{total}}{dt} + \boldsymbol{\Omega} \times \mathbf{K}_{total} + \mathbf{v} \times \mathbf{B}_{total}$$

Substituted (9), (11) and (12) into above equations, then,

$$\mathbf{F}_{total} = m_s\dot{\mathbf{v}} + \mathbf{u} + m_s\boldsymbol{\Omega} \times \mathbf{v} + \boldsymbol{\Omega} \times \mathbf{B}_p \quad (15)$$

$$\begin{aligned} \mathbf{M}_{total} &= \mathbf{J}_s\dot{\boldsymbol{\Omega}} + \dot{\mathbf{r}}_p \times \mathbf{B}_p + \mathbf{r}_p \times \mathbf{u} - \mathbf{J}_s\boldsymbol{\Omega} \times \boldsymbol{\Omega} \\ &\quad - m_s\mathbf{v} \times \mathbf{v} + \boldsymbol{\Omega} \times (\mathbf{r}_p \times \mathbf{B}_p) + \mathbf{v} \times \mathbf{B}_p \end{aligned} \quad (16)$$

Substituted (10) into (16), then gets,

$$\begin{aligned} \mathbf{M}_{total} &= \mathbf{J}_s\dot{\boldsymbol{\Omega}} - \boldsymbol{\Omega} \times \mathbf{r}_p \times \mathbf{B}_p + \mathbf{r}_p \times \mathbf{u} - \mathbf{J}_s\boldsymbol{\Omega} \times \boldsymbol{\Omega} \\ &\quad - m_s\mathbf{v} \times \mathbf{v} - \mathbf{r}_p \times \mathbf{B}_p \times \boldsymbol{\Omega} \end{aligned} \quad (17)$$

$\dot{\mathbf{v}}$  is derived from (13) and (15) as follows,

$$\dot{\mathbf{v}} = \mathbf{M}^{-1}((\mathbf{M}\mathbf{v} + \mathbf{B}_p) \times \boldsymbol{\Omega} + m_0g\mathbf{R}_1^T\mathbf{k} + \mathbf{R}_2\mathbf{F}_a - \mathbf{u}) \quad (18)$$

where,  $\mathbf{M} = m_s\mathcal{I} + \mathbf{M}_f = \text{diag}(m_1, m_2, m_3)$ .  $\mathcal{I}$  is the  $3 \times 3$  identity matrix.

Similarly,  $\dot{\boldsymbol{\Omega}}$  is derived from (14) and (17) as follows,

$$\begin{aligned} \dot{\boldsymbol{\Omega}} &= \mathbf{J}^{-1}((\mathbf{J}\boldsymbol{\Omega} + \mathbf{r}_p \times \mathbf{B}_p) \times \boldsymbol{\Omega} + \boldsymbol{\Omega} \times \mathbf{r}_p \times \mathbf{B}_p \\ &\quad + \mathbf{M}\mathbf{v} \times \mathbf{v} + \bar{m}g\mathbf{r}_p \times \mathbf{R}_1^T\mathbf{k} + \mathbf{M}_a - \mathbf{r}_p \times \mathbf{u}) \end{aligned} \quad (19)$$

where,  $\mathbf{J} = \mathbf{J}_s + \mathbf{J}_f = \text{diag}(J_1, J_2, J_3)$ .

As the airship is driven by change of buoyancy, it is necessary to control the mass of ballonets, through the input  $u_4$ , as

$$\dot{m}_b = u_4 \quad (20)$$

Combining with equations (1), (18), (19), (10), (9) and (20), the mathematical model of a buoyancy-driven airship is obtained as

$$\begin{pmatrix} \dot{\mathbf{R}}_1 \\ \dot{\mathbf{b}} \\ \dot{\mathbf{v}} \\ \dot{\boldsymbol{\Omega}} \\ \dot{\mathbf{r}}_p \\ \dot{\mathbf{B}}_p \\ \dot{m}_b \end{pmatrix} = \begin{pmatrix} \mathbf{R}_1\hat{\boldsymbol{\Omega}} \\ \mathbf{R}_1\mathbf{v} \\ \mathbf{M}^{-1}\bar{\mathbf{F}} \\ \mathbf{J}^{-1}\bar{\mathbf{M}} \\ \frac{1}{\bar{m}}\mathbf{B}_p - \mathbf{v} - \boldsymbol{\Omega} \times \mathbf{r}_p \\ \mathbf{u} \\ u_4 \end{pmatrix} \quad (21)$$

where,  $\bar{\mathbf{M}}$  is a moment matrix, and  $\bar{\mathbf{F}}$  is a force matrix. The values of  $\bar{\mathbf{M}}$  and  $\bar{\mathbf{F}}$  is as follows,

$$\begin{aligned} \bar{\mathbf{M}} &= (\mathbf{J}\boldsymbol{\Omega} + \mathbf{r}_p \times \mathbf{B}_p) \times \boldsymbol{\Omega} + \boldsymbol{\Omega} \times \mathbf{r}_p \times \mathbf{B}_p \\ &\quad + \mathbf{M}\mathbf{v} \times \mathbf{v} + \bar{m}g\mathbf{r}_p \times \mathbf{R}_1^T\mathbf{k} + \mathbf{M}_a - \mathbf{r}_p \times \mathbf{u} \\ \bar{\mathbf{F}} &= (\mathbf{M}\mathbf{v} + \mathbf{B}_p) \times \boldsymbol{\Omega} + m_0g\mathbf{R}_1^T\mathbf{k} + \mathbf{R}_2\mathbf{F}_a - \mathbf{u} \end{aligned}$$

## III. A SPECIAL CASE OF THE AIRSHIP DYNAMICS

### A. Dynamics in the Vertical Plane

This mathematical model (21) has many complex couplings, which make it difficult to analyse by conventional ways as decoupling of the longitudinal plane and the lateral plane through decoupling [5]. Thus, we restrict the airship in the vertical plane.

The airship has to be driven by a periodic change of net buoyancy. The airship moves in a saw-tooth pattern path. So the most ideal and simplest condition is that the airship only moves in the vertical plane  $e_1 - e_3$  and it is assumed not to be disturbed by the wind and the atmosphere. Thus, it is assumed that there is no wind, and the density, pressure, temperature of atmosphere are constant; the vertical plane of the body frame and the inertial frame do coincide.

Since the airship only flies in the vertical plane, some states are set to zero. Thus, attitude angles  $\psi = \phi = 0$ , position  $y = 0$ , velocity  $v_2 = 0$ , angular velocities  $\Omega_1 = \Omega_2 = 0$ . And we also suppose the ballast only move in the vertical plane, so  $r_{p2} = 0$ ,  $B_{p2} = 0$  and  $u_2 = 0$ .

Substituting the above restricted conditions into the mathematical model (21), the motion equations in the vertical

plane reduce to,

$$\dot{\theta} = \Omega_2 \quad (22)$$

$$\dot{\Omega}_2 = \frac{1}{J_2} ((m_3 - m_1) v_1 v_3 - (r_{p1} B_{p1} + r_{p3} B_{p3}) \Omega_2 + M_a - \bar{m} g (r_{p1} \cos \theta + r_{p3} \sin \theta) + r_{p1} u_3 - r_{p3} u_1) \quad (23)$$

$$\dot{v}_1 = \frac{1}{m_1} (-m_3 v_3 \Omega_2 - B_{p3} \Omega_2 - m_0 g \sin \theta + X_a \cos \alpha - Z_a \sin \alpha - u_1) \quad (24)$$

$$\dot{v}_3 = \frac{1}{m_3} (m_1 v_1 \Omega_2 + B_{p1} \Omega_2 + m_0 g \cos \theta + X_a \sin \alpha + Z_a \cos \alpha - u_3) \quad (25)$$

$$\dot{r}_{p1} = \frac{1}{\bar{m}} B_{p1} - v_1 - r_{p3} \Omega_2 \quad (26)$$

$$\dot{r}_{p3} = \frac{1}{\bar{m}} B_{p3} - v_3 + r_{p1} \Omega_2 \quad (27)$$

$$\dot{B}_{p1} = u_1 \quad (28)$$

$$\dot{B}_{p3} = u_3 \quad (29)$$

$$\dot{m}_b = u_4 \quad (30)$$

Here, the drag, lift and pitch moment in the vertical plane are simplified as follows,

$$X_a = \frac{1}{2} \rho_a \nabla^{2/3} \mathbf{v}^2 (C_{x0} + C_x^\alpha \alpha^2)$$

$$Z_a = \frac{1}{2} \rho_a \nabla^{2/3} \mathbf{v}^2 (C_{z0} + C_z^\alpha \alpha)$$

$$M_a = \frac{1}{2} \rho_a \nabla \mathbf{v}^2 (C_{m0} + C_m^\alpha \alpha)$$

### B. A Nonlinear Feedback Controller

To keep control of the attitude and velocity of the airship, let new control input  $\tilde{\mathbf{u}} = (\tilde{u}_1, \tilde{u}_2, \tilde{u}_3)^T$ . Differentiating (22), with (24) and (25), then gives

$$\begin{pmatrix} \ddot{\theta} \\ \dot{v}_1 \\ \dot{v}_3 \end{pmatrix} = \begin{pmatrix} \tilde{u}_1 \\ \tilde{u}_3 \\ \tilde{u}_4 \end{pmatrix} = -\mathbf{P} + \mathbf{C} \begin{pmatrix} u_1 \\ u_3 \\ u_4 \end{pmatrix} \quad (31)$$

Form differentiating (22), (24) and (25), matrices  $\mathbf{P}$  and  $\mathbf{C}$  can be derived. Thus, we can get nonlinear state feedback from (31),

$$\begin{pmatrix} u_1 \\ u_3 \\ u_4 \end{pmatrix} = \mathbf{C}^{-1} \left( \begin{pmatrix} \tilde{u}_1 \\ \tilde{u}_3 \\ \tilde{u}_4 \end{pmatrix} + \mathbf{P} \right) \quad (32)$$

which linearizes  $\ddot{\theta}$ ,  $\dot{v}_1$  and  $\dot{v}_3$  with respect to the new input  $\tilde{\mathbf{u}}$ .

Substitute (32) into (24)-(30), and get the motion equations of the airship with a nonlinear states controller in the vertical plane. Results of (31) will be published elsewhere.

### C. Static Stability Analysis

As Figure 5, the airship driven by buoyancy flies along an oblique line with angle  $\xi_e$  during equilibrium cruise. At a time  $t$ , the airship is at the position  $(x, z)$  in the vertical plane with respect to the inertial frame, and  $(x', z')$  in the coordinate  $i' - G - k'$ .

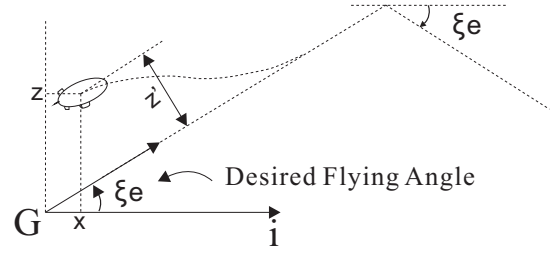


Fig. 5. Flying Sketch

According to the rotation matrix, the distance from the airship to the desired path is as follows, see Figure 6,

$$z' = -\sin \xi_e x + \cos \xi_e z \quad (33)$$

Differentiating (33) and substituting  $v_1$ ,  $v_3$  and  $\theta$  into it. The perpendicular velocity to desired path is

$$\begin{aligned} \dot{z}' &= -\sin \xi_e (v_1 \cos \theta + v_3 \sin \theta) \\ &\quad + \cos \xi_e (-v_1 \sin \theta + v_3 \cos \theta) \end{aligned} \quad (34)$$

During the equilibrium cruise, equations (24)-(30) and (33) are all equal to zero. Through those equations, the equilibrium states  $\mathbf{x}_e = (\theta_e, \Omega_{2e}, v_{1e}, v_{3e}, r_{p1e}, r_{p3e}, B_{p1e}, B_{p3e}, m_{be}, z'_e)^T$  and input  $\mathbf{u}_e = (u_{1e}, u_{2e}, u_{3e})^T$  during cruise under desired path angle  $\xi_e$  and speed  $\mathbf{V}_e$  can be got.

The nonlinear model (22)-(30) can be simulated directly in MATLAB through the principle of digital integration, but the relation between parameters and performances of the system can not be clear revealed from the nonlinear model. Thus, as conventional [5], small disturbance method is used to linearize the mathematical model around the equilibrium. The static stability of the airship around the equilibrium can be studied through the linearized model.

The motion of airship can be split into two motions, the benchmark motion  $\mathbf{x}_e$  and  $\mathbf{u}_e$  which are the values on the equilibrium, and the disturbing motion  $\Delta \mathbf{x}$  and  $\Delta \mathbf{u}$  which are the values away from the equilibrium. Substituting  $\mathbf{x} = \mathbf{x}_e + \Delta \mathbf{x}$  and  $\mathbf{u} = \mathbf{u}_e + \Delta \mathbf{u}$  into (22)-(30) and (34), the result only keep the first-order of  $\Delta \mathbf{x}$  and  $\Delta \mathbf{u}$ , neglected high-order terms. Then, the linearized model is as follows,

$$\Delta \dot{\mathbf{x}} = \mathbf{A} \Delta \mathbf{x} + \mathbf{B} \Delta \mathbf{u} \quad (35)$$

where,  $\mathbf{A}$  is a  $12 \times 12$  constant system matrix, and  $\mathbf{B}$  is a  $12 \times 3$  input matrix.

Given that the airship is desired to fly with the angler  $\xi_e = 15^\circ$  and the velocity  $\mathbf{V}_e = 10 \text{ m/s}$ . After computered the values of states on that equilibrium and linearization, the values of matrix  $\mathbf{A}$  and  $\mathbf{B}$  can be got. The eigenvalues of the system are not totally stable, but the system is controllable.

## IV. LQR CONTROLLER OF THE AIRSHIP

In this section, we design a simple linear feedback controller for the nonlinear system (22)-(30), and demonstrate the performance of that controlled flying in the vertical plane. This simple linear controller is not good enough with large initial errors, and which need improve.



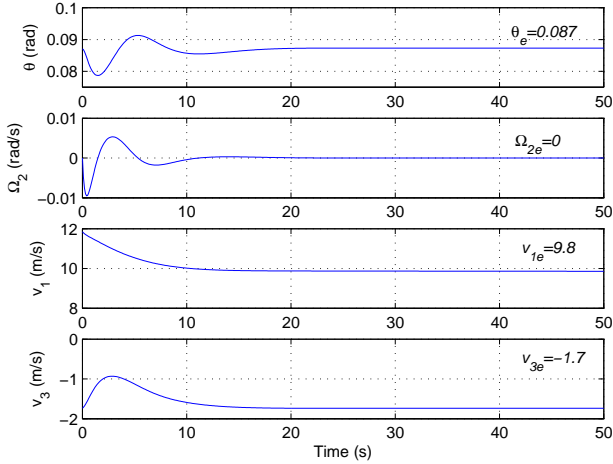


Fig. 6. Simulation Result

The linear quadratic regulator (LQR) is a well-known design technique that provides practical feedback gains. It is assumed that all the 10 states  $\Delta x$  are available for the controller. The infinite horizon cost function is defined as,

$$J = \int_0^{\infty} (\Delta x^T Q \Delta x + \Delta u^T R \Delta u) dt$$

The weight matrices  $Q$  and  $R$  are tuning parameters and their choice will decide about the performance of the closed loop system. In this simulation,  $Q = (2, 1, 2, 2, 1, 1, 1, 1, 0.5, 1)^T$ ,  $R = (0.1, 0.1, 0.1)^T$ .

The feedback gain is a matrix  $K$ , implemented as,

$$\Delta u = -K(x - x_{desired}) = -K(x - x_e) = -K\Delta x \quad (36)$$

where,  $K$  is easily computed by MATLAB. Substitute the linear feedback controller (36) into nonlinear equations in the vertical plane (22)-(30). Given  $\xi_e = 15^\circ$  and the velocity  $V_e = 10 \text{ m/s}$ , so  $\alpha_e = -10^\circ$ ,  $v_1 = 9.8 \text{ m/s}$  and  $v_3 = -1.7 \text{ m/s}$ . If there is a abrupt wind led up to  $+2 \text{ m/s}$  offset of  $v_1$ . Figure 6 is the simulation of the nonlinear system with controller (36) under that initial errors, and Figure 7 is the flying path of the airship in this situation. The system can converge to the equilibrium after 15 seconds with that LQR controller. But the system will be unstable with larger initial errors.

## V. CONCLUSION

In this paper, A novel airship has been studied, which is driven by a cyclic changing the net buoyancy of the airship, and the attitude is controlled by moving the internal ballast. There are not conventional thrusts, elevators and rudders.

Referred to the model of underwater glider, a full 6DOF nonlinear model of the airship has been derived with the ballast and the ballonnet being considered separately. The mathematic model is similar to the model of underwater sliders, but it is derived by a general aerial way [8], [11]. The dynamics in the vertical plane has been derived. A

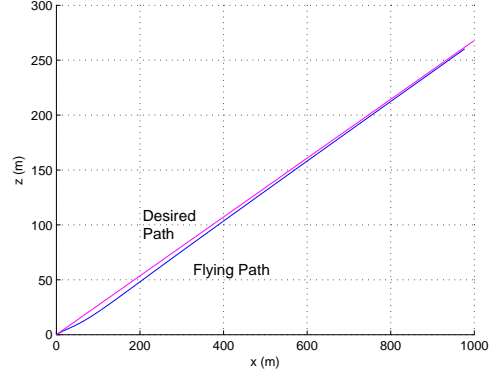


Fig. 7. Flying Path

nonlinear controller is designed. The nonlinear model in the vertical plane has been linearized, and the static stability and controllability of the airship have been studied. A LQR linear feedback controller also has been designed and simulated.

Compared to most of the prevalent high-altitude airship researches, this paper give out a novel concept of the high-altitude airship. Compared to the conventional engine-driven airship, the new kind airship is driven by buoyancy. This driving method aims at making the airship cruise long distant with consuming little energy.

Future research perspectives include the effects of the various atmospheric density, temperatures and pressure with the change of altitude based on this model, and the design of a better performance nonlinear controller. The dynamics in the lateral plane also need be considered.

## REFERENCES

- [1] A. Elfes and S. Bueno, *Project AURORA: development of an autonomous unmanned remote Monitoring Robotic Airship*, J. Braz. Comp. Soc. Vol. 4 no. 3, pp70-78, Apr.1998.
- [2] T. C. Tozer and D. Grace, *High-altitude platforms for wireless communications*, IEE Electron. Commun. Eng. J., vol. 13, no. 3, pp. 127137, Jun. 2001.
- [3] Naval Research Advisory Committee, *Lighter Than Air Systems for Future Naval Missions Briefing: Flag Officers and Senior Executive Service*, The Pentagon Auditorium, Washington D.C., October, 2005.
- [4] *Nonlinear gliding stability and control for vehicles with hydrodynamic forcing*, Automatica, 44, pp. 1240-1250, 2008.
- [5] L. Beji and A. Abichou, *Position and attitude control of an under-actuated autonomous airship*, International Journal of Differential Equations and Applications, Volume 8, No. 3, pp. 231-255, 2003.
- [6] J. Mueller and M. Paluszek, *Development of an aerodynamic model and control law design for a high altitude airship*, AIAA Unmanned Unlimited Conference, No. AIAA-6479, Chicago, IL, 2004.
- [7] J. Ouyang, *Research on modeling and control of an unmanned airship*, Dissertation for the Doctor Degree, Shanghai Jiaotong University, 2003.
- [8] B. Gomes and J. G. Ramos, *Airship dynamic modeling for autonomous operation*, IEEE Int. Conf. on Robotics and Automation, pp. 3462-3467, 1998.
- [9] R. Purandare, *A buoyancy-propelled airship*, Dissertation for the Doctor Degree of Philosophy, New Mexico State University, 2007
- [10] N. Leonard, *Stability of a bottom-heavy underwater vehicle*, Automatica, Vol. 33, No. 3, pp. 331-346, 1997
- [11] N. Leonard and J. Graver, *Model-based feedback control of autonomous underwater gliders*, IEEE Journal of Oceanic Engineering, Vol. 26, No. 4, October 2001.