



HAL
open science

Brittle/quasi-brittle transition in dynamic fracture: An energetic signature

Julien Scheibert, Claudia Guerra, Fabrice Célarié, Davy Dalmas, Daniel Bonamy

► **To cite this version:**

Julien Scheibert, Claudia Guerra, Fabrice Célarié, Davy Dalmas, Daniel Bonamy. Brittle/quasi-brittle transition in dynamic fracture: An energetic signature. 2009. hal-00394618v2

HAL Id: hal-00394618

<https://hal.science/hal-00394618v2>

Preprint submitted on 19 Oct 2009 (v2), last revised 15 Feb 2010 (v3)

HAL is a multi-disciplinary open access archive for the deposit and dissemination of scientific research documents, whether they are published or not. The documents may come from teaching and research institutions in France or abroad, or from public or private research centers.

L'archive ouverte pluridisciplinaire **HAL**, est destinée au dépôt et à la diffusion de documents scientifiques de niveau recherche, publiés ou non, émanant des établissements d'enseignement et de recherche français ou étrangers, des laboratoires publics ou privés.

Brittle/quasi-brittle transition in dynamic fracture: An energetic signature

J. Scheibert,^{1,2,*} C. Guerra,^{1,3} F. Clari,^{1,2,†} D. Dalmas,² and D. Bonamy¹

¹*CEA, IRAMIS, SPCSI, Grp. Complex Systems & Fracture, F-91191 Gif sur Yvette, France*

²*Unit Mixte CNRS/Saint-Gobain, Surface du Verre et Interfaces,
39 Quai Lucien Lefranc, 93303 Aubervilliers cedex, France*

³*Facultad de Ingeniera Mecanica y Elctrica, Universidad Autnoma de Nuevo Len,
Ave. Universidad, S/N, Ciudad Universitaria, C.P. 66450, San Nicols de los Garza, NL, Mexico*

Dynamic fracture experiments were performed in PMMA over a wide range of velocities and reveal that the fracture energy exhibits an abrupt 3-folds increase from its value at crack initiation at a well-defined critical velocity, below the one associated to the onset of micro-branching instability. This transition is associated with the appearance of conics patterns on fracture surfaces that, in many materials, are the signature of damage spreading through the nucleation and growth of micro-cracks. A simple model allows to relate both the energetic and fractographic measurements. These results suggest that dynamic fracture at low velocities in amorphous materials is controlled by the brittle/quasi-brittle transition studied here.

PACS numbers: 46.50.+a, 62.20.M-, 78.55.Qr

Dynamic fracture drives catastrophic material failures. Over the last century, a coherent theoretical framework, the so-called Linear Elastic Fracture Mechanics (LEFM) has developed and provides a quantitative description of the motion of a single smooth crack in a linear elastic material [1]. LEFM assumes that all the mechanical energy released during fracturing is dissipated at the crack tip. Defining the fracture energy Γ as the energy needed to create two crack surfaces of a unit area, the instantaneous crack growth velocity v is then selected by the balance between the energy flux and the dissipation rate Γv . This yields [1]:

$$\Gamma \simeq (1 - v/c_R) K^2(c)/E, \quad (1)$$

where c_R and E are the Rayleigh wave speed and the Young modulus of the material, respectively, and $K(c)$ is the Stress Intensity Factor (SIF) for a quasi-static crack of length c . K depends only on the applied loading and specimen geometry, and characterizes entirely the stress field in the vicinity of the crack front.

Equation (1) describes quantitatively the experimental results for dynamic brittle fracture at slow crack velocities [2]. However, large discrepancies are observed in brittle amorphous materials at high velocities [3, 4, 5, 6]. In particular (i) the measured maximum crack speeds lie in the range $0.5 - 0.6c_R$, i.e. far smaller than the limiting speed c_R predicted by Eq. (1) and (ii) fracture surfaces become rough at high velocities (see [3, 4] for reviews). It has been argued [7] that experiments start to depart from theory above a critical $v_b \simeq 0.4c_R$ associated to the onset of micro-branching instabilities [8]: for $v > v_b$ the crack motion becomes a multi-cracks state. This translates into (i) a dramatic increase of the fracture energy Γ at v_b , due to the increasing number of micro-branches propagating simultaneously and (ii) a non-univocal relation between Γ and v [7]. The micro-branching instability hence yielded many recent theoretical efforts [9].

However, a number of puzzling observations remain at smaller velocities. In particular, even for velocities much lower than v_b , (i) the measured dynamic fracture energy is generally much higher than that at crack initiation [7, 10, 11, 12] and (ii) fracture surfaces roughen over length scales much larger than the microstructure scale ("mist" patterns) [13], the origin of which remains debated [14].

In this Letter, we report dynamic fracture experiments in polymethylmethacrylate (PMMA), the archetype of brittle amorphous materials, designed to unravel the primary cause of these last discrepancies. We show that dynamic fracture energy exhibits an abrupt 3-folds increase from its value at crack initiation at a well-defined critical velocity v_a well below v_b . This increase coincides with the appearance of a new fracture mechanism adding to the mere opening of smooth crack surfaces that is described in LEFM. This mechanism is clearly identified to be damage spreading through the nucleation and growth of micro-cracks, the signature of which is the presence of conic patterns on post-mortem fracture surfaces. A simple model for this nominally brittle to quasi-brittle transition is shown to reproduce both the energetic and fractographic measurements.

Dynamic cracks are driven in PMMA with measured Young modulus and Poisson ratio of $E = 2.8 \pm 0.2$ GPa and $\nu = 0.36$, which yields $c_R = 880 \pm 30$ m.s⁻¹. Its fracture energy at the onset of crack propagation was determined to be $K_c^2/E = 0.42 \pm 0.07$ kJ.m⁻², with K_c being the material toughness. Specimen are prepared from $140 \times 125 \times 15$ mm³ parallelepipeds in the x (propagation), y (loading) and z (thickness) directions by cutting a 25×25 mm² rectangle from the middle of one of the 125×15 mm² edges and then cutting a 10 mm groove deeper into the specimen (Fig. 1, bottom inset). Two steel jaws equipped with rollers are placed on both sides of the cut-out rectangle and a steel wedge (semi-

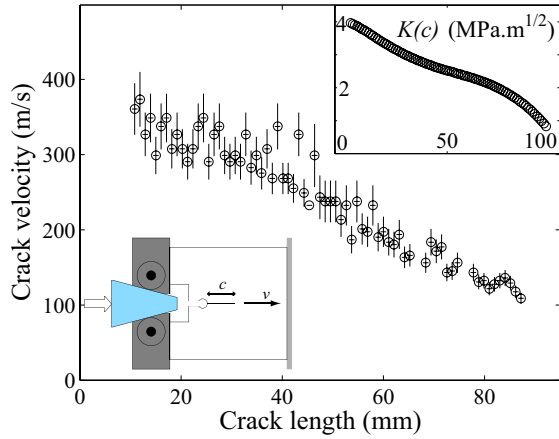


FIG. 1: Measured crack velocity v as a function of crack length c in a typical experiment ($U_0 = 2.6$ J). The vertical lines are error bars. Top inset: Calculated quasi-static SIF K as a function of c . Bottom inset: Schematics of the Wedge-Splitting test.

angle 15°) is pushed between them at constant velocity $38 \mu\text{m.s}^{-1}$ up to crack initiation. In this so-called wedge splitting geometry, the SIF K decreases with the crack length c . To increase its value at crack initiation, and therefore the initial crack velocity, a circular hole with a radius ranging between 2 and 8 mm is drilled at the tip of the groove to tune the stored mechanical energy U_0 . Dynamic crack growth with instantaneous velocities ranging from 75 m.s^{-1} to 500 m.s^{-1} and stable trajectories are obtained. The location $c(t)$ of the crack front is measured during each experiment ($40 \mu\text{m}$ and $0.1 \mu\text{s}$ resolutions) using a modified version of the potential drop technique: A series of 90 parallel conductive lines (2.4 nm-thick Cr layer covered with 23 nm-thick Au layer), $500 \mu\text{m}$ -wide with an x -period of 1 mm are deposited on one of the x - y surfaces of the specimen, connected in parallel and alimented with a voltage source. As the crack propagates, the conductive lines are cut at successive times, these events being detected with an oscilloscope. The instantaneous crack velocity $v(c)$ is computed from $c(t)$, and the instantaneous SIF $K(c)$ is calculated using 2D finite element calculations (software Castem 2007) on the exact experimental geometry, assuming plane stress conditions and a constant wedge position as boundary condition.

Values for the fracture energy Γ are obtained directly from Eq. (1) by combining the v measurements and the K calculations. Typical $v(c)$ and $K(c)$ curves are shown in Fig. 1. The variations of Γ with v (Fig. 2) are found to be the same in various experiments performed with various stored mechanical energy $U_0 > 2.0$ J at crack initiation. This curve provides evidence for three regimes, separated by two critical velocities. For slow crack velocities, Γ remains of the order of K_c^2/E as expected

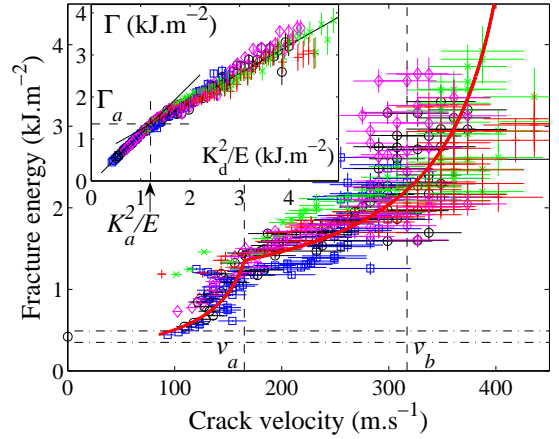


FIG. 2: (color online). Fracture energy Γ as a function of crack velocity v for five different experiments with different stored mechanical energies U_0 at crack initiation: 2.0 (\square), 2.6 (\circ), 2.9 (\diamond), 3.8 ($+$) and 4.2 J (\times). The two vertical dashed lines correspond to v_a and v_b . The two horizontal dashed lines indicate the confidence interval for the measured fracture energy K_c^2/E at crack initiation. The thick red line represents the model prediction. Inset: Γ as a function of K_d^2/E (see model) for the same experiments. A crossover between two linear regimes (linear fits in black lines) occurs at ($K_d^2/E = K_a^2/E \simeq 1.2 \text{ kJ.m}^{-2}$; $\Gamma = \Gamma_a \simeq 1.34 \text{ kJ.m}^{-2}$).

in LEFM. Then, as v reaches the first critical velocity $v_a \simeq 165 \text{ m.s}^{-1} = 0.19c_R$, Γ increases abruptly to a value about 3 times larger than K_c^2/E . Beyond v_a , Γ increases slowly with v up to the second critical velocity, $v_b = 0.36c_R \simeq 317 \text{ m.s}^{-1}$ [7], above which Γ diverges again with v . This second increase corresponds to the onset of the micro-branching instability, widely discussed in the literature [7, 8], whereas the first one, at v_a , is reported here for the first time. The high slope of $\Gamma(v)$ around v_a provides a direct interpretation for the repeated observation of cracks that span a large range of Γ but propagate at a nearly constant velocity of about $0.2c_R$ (see *e.g.* refs. [15, 16]).

The post-mortem fracture surfaces shed light on the nature of the transition at $v = v_a$ on the curve $\Gamma(v)$. Fig. 3 shows the surface morphology for increasing crack velocity. For $v < v_a$, the fracture surfaces remain smooth at the optical scale (Fig. 3(a), top). Above v_a conic marks are observed (Figs. 3(b) and 3(c), top). They do not leave any visible print on the sides of the specimens (Fig. 3(b), bottom), contrary to the micro-branches that develop for $v \geq v_b$ (Fig. 3(c), bottom).

Similar conic marks were reported in the fracture of many other amorphous brittle materials (see [4, 13] and references therein), including polymer glasses, silica glasses and polycrystals. Their formation is thought to arise from inherent toughness fluctuations at the microstructure scale due to material heterogeneities ran-

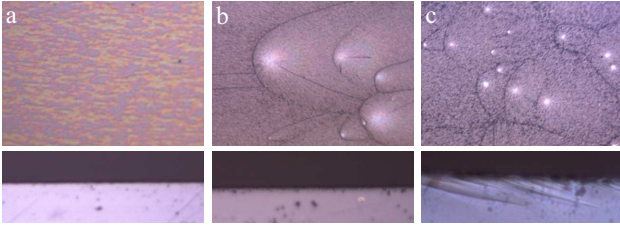


FIG. 3: Microscope images ($\times 10$) taken at (a) $v = 120 \pm 20 \text{ m.s}^{-1}$, $K^2/E = 1 \text{ kJ.m}^{-2}$ (b) $v = 260 \pm 30 \text{ m.s}^{-1}$, $K^2/E = 2 \text{ kJ.m}^{-2}$ (c) $v = 650 \pm 100 \text{ m.s}^{-1}$ ($K^2/E = 7 \text{ kJ.m}^{-2}$). Top line : fracture surfaces ($0.5 \times 0.7 \text{ mm}^2$ field of view). Bottom line : sample sides ($0.25 \times 0.7 \text{ mm}^2$ field of view). Crack propagation is from left to right.

domly distributed throughout the material [16, 17]. The enhanced stress field in the vicinity of the main crack front activates some of the low toughness zones and triggers the initiation of secondary penny-shaped micro-cracks ahead of the crack front. Each micro-crack grows radially under the stress associated with the main crack along a plane different from it. When two cracks intersect in space and time, the ligament separating them breaks up, leaving a visible conic marking on the post-mortem fracture surface.

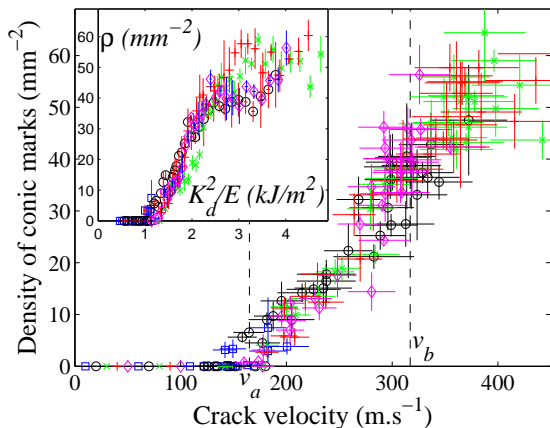


FIG. 4: (color online). Surface density ρ of conic marks as a function of crack velocity for all experiments shown in Fig. 2. Inset: ρ as a function of K_d^2/E .

Figure 4 shows the surface density of conic marks ρ as a function of crack velocity v . Below v_a , no conic mark is observed up to $\times 50$ magnification, consistently with [18]. Above v_a , ρ increases almost linearly with $v - v_a$. The exact correspondence between the critical velocity v_a at which Γ exhibits an abrupt increase and the velocity at which the first conic marks appear on the fracture surfaces strongly suggests that both phenomena are associated with the same transition. The nucleation and

growth of micro-cracks can therefore be identified as the new fracture mechanism that starts at v_a . This damage process is generic in brittle materials and is relevant for an even wider range of materials than those that exhibit conic marks, *e.g.* granite [19].

We now present a simple model reproducing the $\Gamma(v)$ curve between 0 and v_b . The material is assumed to contain a uniform volume density ρ_s of discrete "source-sinks" (SS, see *e.g.* [20] for previous uses of this concept). When the local stress reaches a threshold σ_s , a SS is "activated", *i.e.* it dissipates an amount of energy ϵ_s through plastic deformations, crazing or cavitation for instance. The universal nature of the near-tip stress field yields that all SS at distance smaller than $d(v) = K_d(c, v)^2 / 2\pi\sigma_s^2$ from the crack plane are activated, with $K_d(c, v)$ being the local dynamic SIF. We assume that SS far enough from the crack tip - beyond a distance d_a - turn into micro-cracks, the nucleation of which is accompanied by an excluded volume V where stress is screened *i.e.* no SS can be activated anymore. In the following, ρ_s , σ_s , ϵ_s , d_a and V are assumed to be constant for all sites. Three cases should be considered: (I) - At the onset of crack propagation, all activated SS within $d(v = 0) = K_c^2 / 2\pi\sigma_s^2$ contribute to the fracture energy $\Gamma(v = 0) = K_c^2 / E$.

(II) - For $0 < v \leq v_a$, no micro-crack nucleates and $d(v) = K_d(c, v)^2 / 2\pi\sigma_s^2 < d_a$. The dynamic SIF is then $K_d(c, v) = k(v)K(c)$ where $k(v)$ is a known universal function (see [1] for expression). The number of activated sites per unit of fracture surface *in excess with respect to case (I)* is $2\rho_s(d(v) - d(v = 0))$. This yields:

$$\Gamma(v) = \left(1 - \frac{\epsilon_s \rho_s E}{\pi \sigma_s^2}\right) \frac{K_c^2}{E} + \frac{\epsilon_s \rho_s E}{\pi \sigma_s^2} \frac{K_d(c, v)^2}{E}. \quad (2)$$

Equation (2) predicts a linear dependence of Γ with $K_d(c, v)^2 / E$ as long as $v \leq v_a$. This is in agreement with measurements (Fig. 2, inset). A linear fit to the data gives $\frac{\epsilon_s \rho_s E}{\pi \sigma_s^2} = 1.17 \pm 0.05$ and $\frac{K_c^2}{E} = 0.3 \pm 0.2 \text{ kJ.m}^{-2}$. The latter value is compatible with the measurements of the fracture energy at crack initiation. By combining Eqs. (1) and (2), one gets a prediction for the $\Gamma(v)$ curve [21] that reproduces very well the low velocity regime in Fig. 2. In the absence of micro-cracks, this would predict a divergence of the dissipated energy for v slightly larger than v_a , or equivalently a limiting crack speed around v_a . (III) - For $v \geq v_a$, $d(v) \geq d_a *i.e.* micro-cracks start to nucleate. The surface density of micro-cracks $\rho(v)$ is then equal to the number of activated SS beyond d_a per unit of fracture area, *i.e.* $\rho_s(2(d(v) - d_a) - \rho V)$ where the third term in the parenthesis stands for the excluded sites around micro-cracks. This yields:$

$$\rho(v) = \frac{\rho_s}{1 + \rho_s V} \frac{K_d(c, v)^2 - K_a^2}{\pi \sigma_s^2}. \quad (3)$$

where K_a is the value of K_d at the transition, *i.e.* for $v = v_a$ and $\Gamma = \Gamma_a$. This linear relationship is in

good agreement with the measurements for $\rho(K_d^2/E)$ before the micro-branching onset, beyond which ρ saturates (Fig. 4, inset). In the micro-cracking regime, the local dynamic SIF K_d is not equal to the macroscopic one anymore, but corresponds to that at the individual micro-crack tips. Each micro-crack can be considered locally as a single crack, the limiting velocity of which has been shown to be around v_a . Since the macroscopic dynamic SIF is larger than K_a , it is natural to assume that all micro-cracks propagate at the same velocity v_a . This assumption was previously made in the literature ([16] and references therein) and is fully consistent with the observed shape of the conic marks in our experiments [21]. Hence, in the micro-cracking regime, $K_d(c, v) = k(v_a)K(c)$ and the number of activated sites per unit of fracture surface *in excess with respect to the transition point* is $\rho(v)$. This yields:

$$\Gamma(v) = \Gamma_a + \frac{\epsilon_s \rho_s E}{\pi \sigma_s^2} \frac{1}{1 + \rho_s V} \frac{K_d(c, v)^2 - K_a^2}{E}, \quad (4)$$

with Γ_a the fracture energy at v_a . Eq. (4) predicts a linear dependence of Γ with $K_d(c, v)^2/E$, which is in agreement with the measurements for $K_d^2/E > K_a^2/E$ (Fig. 2, inset). A linear fit to the data gives $\frac{\epsilon_s \rho_s E}{\pi \sigma_s^2} \frac{1}{1 + \rho_s V} = 0.67 \pm 0.01$. The corresponding predicted $\Gamma(v)$ curve [21] reproduces very well the intermediate velocity regime $v_a < v < v_b$ (Fig. 2) and exhibits a divergence of the dissipated energy for v approaching $520 \text{ m.s}^{-1} \simeq 0.6c_R$. This limiting velocity is very close to the observed maximum crack speed in brittle amorphous materials.

This simple scenario allows to illustrate how material defects control the dynamic fracture of amorphous solids before the onset of micro-branching. For $v < v_a$, the activation of defects by the near-tip stress field provides additional dissipation sources for the mechanical energy released at the crack tip. With this mechanism alone, the crack speed would be limited to a value slightly larger than v_a . But damage spreading through micro-cracking makes possible to observe much larger velocities: The crack propagates through the nucleation, growth and coalescence of micro-cracks, with a macroscopic effective velocity that can be much larger than the local velocity of each micro-crack tip [16, 22]. We suggest that micro-cracks in themselves do not increase dissipation, but rather decrease it by locally preventing the activation of further defects. At velocities larger than v_b , micro-branches add their surface contribution to the dissipated energy [23]. We emphasize that the *nominally brittle to quasi-brittle transition* occurring at v_a is very likely to be generic for amorphous solids and should therefore be taken into account in future conceptual and mathematical descriptions of dynamic fracture. In this respect, Continuum Damage Mechanics (CDM) [24] initially derived for "real" quasi-brittle materials like ceramics or concrete may be relevant to describe fast crack growth in

nominally brittle materials. In particular, a better understanding of the relationship between the dynamics of propagation of both the individual micro-cracks and the macroscopic crack is still needed.

We thank P. Viel and M. Laurent (SPCSI) for gold deposits, T. Bernard (SPCSI) for technical support, K. Ravi-Chandar (Univ. of Texas, Austin) for fruitful discussions and P. Meakin (INL/PGP) for a careful reading of the manuscript. We acknowledge funding from French ANR through Grant No. ANR-05-JCJC-0088 and from Mexican CONACYT through Grant No. 190091.

* Present address: PGP, University of Oslo, Oslo, Norway;
Electronic address: julien.scheibert@fys.uio.no

† Present address: LARMAUR, Univ. of Rennes 1, France

- [1] L. Freund, *Dynamic Fracture Mechanics* (C.U.P., 1990).
- [2] H. Bergkvist, *Eng. Fract. Mech.* **6**, 621 (1974).
- [3] J. Fineberg and M. Marder, *Phys. Rep.* **313**, 1 (1999).
- [4] K. Ravi-Chandar, *Dynamic Fracture* (Elsevier, 2004).
- [5] A. Livne, O. Ben-David, and J. Fineberg, *Phys. Rev. Lett.* **98**, 124301 (2007).
- [6] A. Livne, E. Bouchbinder, and J. Fineberg, *Phys. Rev. Lett.* **101**, 264301 (2008).
- [7] E. Sharon and J. Fineberg, *Nature* **397**, 333 (1999).
- [8] J. Fineberg, et al. *Phys. Rev. Lett.* **67**, 457 (1991).
- [9] M. Adda-Bedia, *Phys. Rev. Lett.* **93**, 185502 (2004); H. Henry and H. Levine, *Phys. Rev. Lett.* **93**, 105504 (2004); E. Bouchbinder, J. Mathiesen, and I. Procaccia, *Phys. Rev. E* **71**, 056118 (2005); H. Henry, *EPL* **83**, 16004 (2008).
- [10] J. F. Kalthoff, S. Winkler, and J. Beinert, *Int. J. Fract.* **12**, 317 (1976).
- [11] A. J. Rosakis, J. Duffy, and L. B. Freund, *J. Mech. Phys. Solids* **32**, 443 (1984).
- [12] A. Bertram and J. F. Kalthoff, *Materialprüfung* **45**, 100 (2003).
- [13] D. Hull, *Fractography* (C.U.P., 1999).
- [14] T. Cramer, A. Wanner, and P. Gumbsch, *Phys. Rev. Lett.* **85**, 788 (2000); D. Bonamy and K. Ravi-Chandar, *Phys. Rev. Lett.* **91**, 235502 (2003); M. J. Buehler and H. Gao, *Nature* **439**, 307 (2006); G. Wang, et al. *Phys. Rev. Lett.* **98**, 235501 (2007); A. Rabinovitch and D. Bahat, *Phys. Rev. E* **78**, 067102 (2008).
- [15] K. Ravi-Chandar and W. G. Knauss, *Int. J. Fract.* **26**, 141 (1984).
- [16] K. Ravi-Chandar and B. Yang, *J. Mech. Phys. Solids* **45**, 535 (1997).
- [17] A. Smekal, *Osterr. Ing. Arch.* **7**, 49 (1953).
- [18] J. S. Sheng and Y. P. Zhao, *Int. J. Fract.* **98**, L9 (1999).
- [19] D. E. Moore and D. A. Lockner, *J. Struct. Geol.* **17**, 95 (1995).
- [20] B. Lawn, *Fracture of Brittle Solids* (C.U.P., 1993).
- [21] to be published.
- [22] S. Prades, et al. *Int. J. Solids Struct.* **42**, 637 (2005).
- [23] E. Sharon, S. P. Gross, and J. Fineberg, *Phys. Rev. Lett.* **76**, 2117 (1996).
- [24] L. M. Kadanov, *Introduction to Continuum Damage Mechanics* (Martinus Nijhoff Publishers, 1986).