



HAL
open science

Local minimizers of functionals with multiple volume constraints

Edouard Oudet, Marxc Oliver Rieger

► **To cite this version:**

Edouard Oudet, Marxc Oliver Rieger. Local minimizers of functionals with multiple volume constraints. *ESAIM: Control, Optimisation and Calculus of Variations*, 2008, 14 (4), pp.780–794. hal-00385125

HAL Id: hal-00385125

<https://hal.science/hal-00385125>

Submitted on 18 May 2009

HAL is a multi-disciplinary open access archive for the deposit and dissemination of scientific research documents, whether they are published or not. The documents may come from teaching and research institutions in France or abroad, or from public or private research centers.

L'archive ouverte pluridisciplinaire **HAL**, est destinée au dépôt et à la diffusion de documents scientifiques de niveau recherche, publiés ou non, émanant des établissements d'enseignement et de recherche français ou étrangers, des laboratoires publics ou privés.

LOCAL MINIMIZERS OF FUNCTIONALS WITH MULTIPLE VOLUME CONSTRAINTS *

É O ¹ M O R ²

Abstract. We study variational problems with volume constraints, i.e., with level sets of prescribed measure. We introduce a numerical method to approximate local minimizers and illustrate it with some two-dimensional examples. We demonstrate numerically nonexistence results which had been obtained analytically in previous work. Moreover, we show the existence of discontinuous dependence of global minimizers from the data by using a Γ -limit argument and illustrate this with numerical computations. Finally we construct explicitly local and global minimizers for problems with two volume constraints.

1991 Mathematics Subject Classification. 49J,65K10.

The dates will be set by the publisher.

1. I

Let Ω be a bounded open set in \mathbb{R}^n . The general form of a variational problem on Ω with two level set constraints is given by the minimization of

$$\begin{aligned} \text{Minimize } E(u) &:= \int_{\Omega} f(x, u(x), \nabla u(x)) dx, \\ &|\{x \in \Omega, u(x) = a\}| = \alpha, \\ &|\{x \in \Omega, u(x) = b\}| = \beta, \end{aligned} \tag{1}$$

where $u \in H^1(\Omega)$ and $\alpha, \beta > 0$, $\alpha + \beta < |\Omega|$. Problems of this class have been encountered in the context of immiscible fluids [?] and mixtures of micromagnetic materials [?]. The difficulty of such problems is the special structure of their constraints: A sequence of functions satisfying these constraints can have a limit which fails to satisfy the constraints. Such minimization problems but with only one volume constraint have been studied by various authors, see e.g. [?]. Problems with two or more constraints have a very different nature than problems with only one volume constraint: In the case of one volume constraint, only additional boundary conditions or the design of the energy can induce transitions of the solution between different values. Two or more volume constraints, on the other hand, force transitions of the solution by their very nature. Such problems have been studied starting from the fundamental work by Ambrosio, Marcellini, Fonseca and Tartar [?]. Their results have been generalized by various authors, compare e.g., [?, ?, ?]. It turned out that existence can only be guaranteed for functions f satisfying quite specific conditions, and that there are easy examples of

Keywords and phrases: Volume constrained problems, numerical simulations, level set method, local minima.

* *The second author is grateful for two invitations to the Université de Savoie that enabled this work.*

¹ Université de Savoie, Edouard.Oudet@univ-savoie.fr

² ETH Zürich, marc.riegler@math.ethz.ch

nonexistence, e.g. if $n = 1$, $f(x, u, u') = |u'|^2 + |u|$ and $|\Omega| - \alpha - \beta$ sufficiently large [?]. Whereas the one dimensional case by now is relatively well understood (compare [?, ?]), there are few sharp results on existence in the higher dimensional case [?]. There are in addition some results on local minimizers in the one-dimensional case [?], but there were so far no rigorous results in the higher dimensional case. By computing the shape derivative of the functional it is, however, possible to give a necessary condition for minimizers, as has been done in [?]:

Theorem 1.1. *Let $u \in W^{1,2}(\Omega, [0, 1])$ be a solution of (1). Assume that $S := \partial\{u = 0\} \cap \Omega$ is C^1 , then $\frac{\partial u}{\partial n}$ is locally constant on S .*

There is also very little known about explicit examples of minimizers in two dimensions, compare [?, ?].

In this article we are introducing a numerical method for the approximation of local minimizers of (1). We apply this method to various examples and obtain a first picture of the shape of local and global minimizers for some simple domains in \mathbb{R}^2 . Guided by the numerical results, we prove rigorously that even on the unit square solutions are not depending continuously on the parameter α and β and illustrate this with numerical results. Moreover, we show that even on convex domains in \mathbb{R}^2 nontrivial local minimizers can exist.

2. N

2.1. General approach and level-set methods

We suppose in this section the existence of a solution of (1), i.e. that there exists a function $u \in H^1(\Omega)$ minimizing the problem (1). Our goal is to find a numerical method for the computation of this solution.

We will first explain our ideas in the simplest situation where $f(x, u(x), \nabla u(x)) = |\nabla u(x)|^2$. In this situation existence of a solution for problem (1) has been already found in [?]. Our approach is based on the following fact: Let u^* be an optimal function for the problem, and denote

$$\Omega_a = \{x \in \Omega, u^*(x) = a\}, \quad \Omega_b = \{x \in \Omega, u^*(x) = b\}.$$

Ω_a and Ω_b are closed sets, since u is Hölder continuous, for a proof see [?, Theorem 3.3]. Then, it is possible to reconstruct u^* by solving the elliptic boundary value problem:

$$\begin{cases} \Delta u = 0, & \text{in } \Omega \setminus (\Omega_a \cup \Omega_b), \\ u = \alpha & \text{on } \partial\Omega_a, \\ u = \beta & \text{on } \partial\Omega_b, \\ \frac{\partial u}{\partial n} = 0 & \text{on } \partial\Omega \setminus (\Omega_a \cup \Omega_b). \end{cases} \quad (2)$$

The numerical approximation of an optimal function u^* is hence reduced to an optimization problem for the two sets Ω_a and Ω_b . Unfortunately, very few results are known concerning the optimal sets Ω_a and Ω_b . In particular, it is not possible to restrict the optimization process to connected sets since disconnected sets can be optimal. We propose below an approach based on level set methods which makes it possible to generate also disconnected sets.

Before this, we recall briefly the standard tools of level set methods in a simplified context where only one single shape is unknown (see for instance [?] for numerical details closely related to our approach). We explain later how to deal with more than one unknown shape.

Let Ω be a subset of \mathbb{R}^2 , we consider an optimization problem where we want to find an optimal set $\mathcal{O} \subset \Omega$ for a given functional. The main idea of the method is to parametrize \mathcal{O} by a function Φ , the so-called *level set function*, that satisfies

$$\begin{cases} \Phi(x) < 0 & \text{if } x \in \mathcal{O}, \\ \Phi(x) > 0 & \text{if } x \in \Omega \setminus \overline{\mathcal{O}}, \\ \Phi(x) = 0 & \text{if } x \in \partial\mathcal{O}. \end{cases}$$

For numerical convenience which will be explain below, the level set function Φ is always defined on a cartesian grid defined on a square containing the set Ω .

As suggested in [?], such a function will be initialized with the signed-distance which is given by

$$\begin{cases} \Phi(x) = -\text{dist}(x, \partial\mathcal{O}) & \text{if } x \in \mathcal{O}, \\ \Phi(x) = \text{dist}(x, \partial\mathcal{O}) & \text{if } x \in \Omega \setminus \mathcal{O}. \end{cases}$$

We remark that the constructed distance is generally not easy to compute. In our case, for the cartesian mesh on Ω , deduced by the cartesian grid where Φ is defined, we choose an approximate signed-distance function which is constant on each triangle of the mesh. Its value in the triangle T is computed by evaluating the distance between the center of mass of T and the center of mass of the closest triangle lying on the boundary of the initial shape.

Once Φ is defined, we can let its level set at 0 (i.e. $\partial\mathcal{O}$) fluctuate with time under the vector field vn (where v is a real-valued function and n is the normal vector on $\partial\mathcal{O}$). In other words, if $x(t)$ describes the evolution of a point on $\partial\mathcal{O}$ under such a transformation, it has to satisfy

$$\Phi(t, x(t)) = 0$$

for all t . Differentiating this expression, we obtain

$$\frac{\partial\Phi}{\partial t}(t, x(t)) + v(x(t))n(x(t)) \cdot \nabla_x \Phi(t, x(t)) = 0. \quad (3)$$

Now the normal to a level set in a non-stationary point is given by

$$n(x(t)) = \frac{\nabla_x \Phi}{|\nabla_x \Phi|}(t, x(t)).$$

Hence, using (3), we derive

$$\frac{\partial\Phi}{\partial t}(t, x(t)) + v(x(t))|\nabla_x \Phi|(t, x(t)) = 0. \quad (4)$$

In order to compute the evolution of Φ , we thus have to solve a Hamilton-Jacobi equation. We remark that the computation we have presented only concerns the level set 0, but since in practice the vector field vn has a natural extension on Ω , we solve the equation (4) in the whole set Ω .

We want to find a good velocity field vn for the shape optimization problem under investigation. Therefore we follow an approach which has been first introduced in [?] and choose vn as the vector field obtained by boundary variations. Let $\mathcal{O} \subset \Omega$ be a connected set with C^2 -boundary and u a solution of the problem

$$\begin{cases} \Delta u = 0, & \text{in } \Omega \setminus \mathcal{O}, \\ u = \alpha & \text{on } \partial\mathcal{O}, \\ \frac{\partial u}{\partial n} = 0 & \text{on } \partial\Omega \setminus \mathcal{O}. \end{cases} \quad (5)$$

It is well known in shape optimization (see for instance [?, ?, ?]) that the shape derivative of the energy of u in the direction of a vector field V localized around $\partial\mathcal{O}$ is given by Hadamard's formula

$$\frac{dE}{dV} = - \int_{\partial\mathcal{O}} \left(\frac{\partial u}{\partial n} \right)^2 Vn \, d\sigma.$$

This computation suggests that the steepest descent direction is given by the normal vector field

$$-\left(\frac{\partial u}{\partial n} \right)^2 n.$$

Moreover, since u is by definition constant along $\partial\mathcal{O}$ this vector field has a natural extension to the domain Ω using the relation:

$$n = \pm \frac{\nabla \Phi}{|\nabla \Phi|}.$$

In order to avoid the computation of a new mesh at each iteration, we compute an approximation of the solution of (5) via a penalization method introduced in [?].

2.2. A multi-level set method

As explained before, the numerical approximation of (1) can be reduced to the approximation of the two sets $\{x \in \Omega, u(x) = a\}$ and $\{x \in \Omega, u(x) = b\}$. In that case, two shapes are unknown and we propose to parametrize those sets with two different level set functions, namely Φ_a and Φ_b . At each step of the algorithm the two sets evolve under the local vector field given by the shape derivative. The only point that we have to worry about is the possibility of crossing of those level sets. Several approaches have already been investigated for dealing with this kind of difficulty. The most standard way to avoid the crossing of the level sets is to add a penalization term like

$$\int_{\Omega} (H(\Phi_a(x)) + H(\Phi_b(x)) - 1)^+ dx = 0$$

to the functional, where $H(y)$ is equal to 1 for $y < 0$ and equal to 0 otherwise and $(y)^+$ stands for the positive part of y . Although we are not able to prove that the crossing of level sets will never happen during the optimization, we did not need to implement the previous method, since in our simulations, we never observed a crossing of level sets. This fact is probably a result of the fact that such crossing (or even touching) of the level sets cannot occur in the limit, i.e. for minimizers of (1) as the following theorem states:

Theorem 2.1. *Let u be a minimizer of (1). Then $\text{dist}(\{u = a\}, \{u = b\}) > 0$.*

Proof. This is an immediate consequence of a regularity result by Mosconi and Tilli [?] that ensures that u is Hölder continuous. \square

Of course, this idea can be extended to arbitrary numbers of level sets.

We now compute the solution of the above Hamilton-Jacobi equation. Our description will be limited to a simple algorithm reported in [?] designed to approach the weak viscosity solution of Hamilton-Jacobi equation problem. Let us consider the first order Cauchy system:

$$\begin{cases} \frac{\partial \Phi}{\partial t}(t, x) - F(x) |\nabla \Phi(t, x)| = 0 & \text{in } \mathbb{R}_+ \times D, \\ \Phi(0, x) = u_0(x) & \text{in } D, \end{cases}$$

where D is a bounded rectangle of \mathbb{R}^2 and u_0 and F are given functions. From now on we shall use the classical notations for finite difference schemes on regular meshes of points indexed by i, j . Starting from $\Phi(0, x) = u_0(x)$, then the evolution of Φ after one time step Δt is given by

$$\Phi_{ij}^{n+1} = \Phi_{ij}^n - \Delta t (\max(F_{ij}, 0) \nabla^+ \Phi + \min(F_{ij}, 0) \nabla^- \Phi),$$

where

$$\nabla^+ \Phi = \left[\max(D_{ij}^{-x} \Phi, 0)^2 + \min(D_{ij}^{+x} \Phi, 0)^2 + \max(D_{ij}^{-y} \Phi, 0)^2 + \min(D_{ij}^{+y} \Phi, 0)^2 \right]^{1/2}$$

and

$$\nabla^- \Phi = \left[\max(D_{ij}^{+x} \Phi, 0)^2 + \min(D_{ij}^{-x} \Phi, 0)^2 + \max(D_{ij}^{+y} \Phi, 0)^2 + \min(D_{ij}^{-y} \Phi, 0)^2 \right]^{1/2},$$

with

$$D_{ij}^{+x} \Phi = \frac{\Phi_{i+1,j} - \Phi_{i,j}}{\Delta x}$$

for a space step equal to Δx . The quantities $D_{ij}^{-x} \Phi$, $D_{ij}^{+y} \Phi$ and $D_{ij}^{-y} \Phi$ are easily deduced. Finally, to define completely our problem, we add the boundary condition

$$\frac{\partial \nabla \Phi(t, x)}{\partial n} = 0 \text{ on } \partial D.$$



F 1. Initial and optimized level sets for a problem with two constraints

The volume of the level set function Φ_a at the discrete level is by definition the volume of all the elements of the mesh where Φ_a is less or equal than zero. In order to preserve this volume equal to α along the iterations, we use the Lagrange multiplier technique reported in [?]. According to the derivative computed in (4), the level set function Φ_a satisfies the Hamilton-Jacobi equation

$$\frac{\partial \Phi_a}{\partial t}(t, x) - (-|\nabla u|^2(t, x) + \mu) |\nabla \Phi_a(t, x)| = 0 \text{ in } \mathbb{R}_+ \times D \quad (6)$$

where $u(t, \cdot)$ is the solution of the system (2) associated to $\Phi_a(t, \cdot)$ and $\Phi_b(t, \cdot)$. As suggested by Osher and Santosa [?], at each iteration we adapt the Lagrange multiplier μ to preserve the volume constraint. The same projection method is of course reproduced for the level set function Φ_b , in case of two volume constraints.

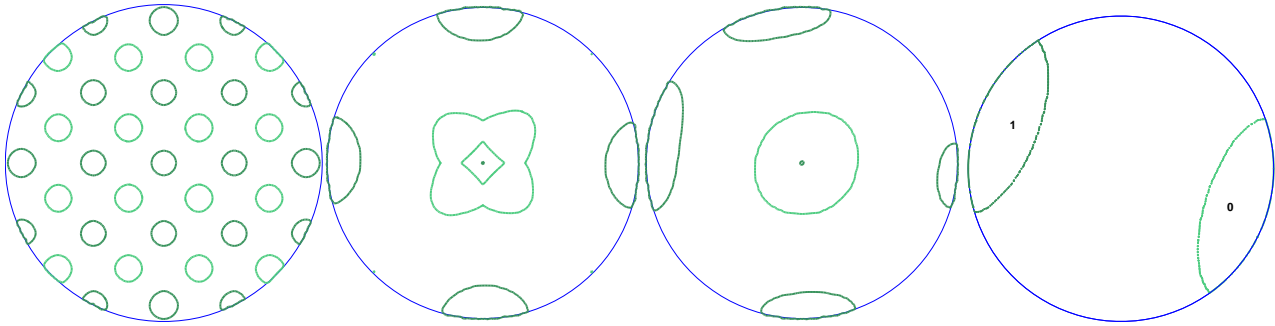
It is now possible to describe all the steps of our algorithm:

1. Initialization of Φ_a and Φ_b by the signed distance on a cartesian grid containing Ω .
2. Computation of the velocity field by a penalization method introduced in [?] on the fixed triangular mesh deduced from the cartesian grid. Checking of an exit criterion.
3. Propagation of the level sets solving the Hamilton-Jacobi equations (6) preserving the volume constraints.
4. Evaluation of the cost function. If the cost decreases then go to step 5. Otherwise divide the time step by 1.5 and go to step 3.
5. Redefinition of Φ_a and Φ_b .
6. Eventually, reinitialization of Φ_a and Φ_b with the signed distance. Back to step 2.

For more details on the computation of the solution of the state equation associated to Φ_a and Φ_b (in the context of one level set constraint) see [?] or [?].

2.3. Examples

We present the result of our optimization process in the next figures. We first study the problem (1) with Ω a disc of radius 0.45, $\alpha = \beta = 0.15^2\pi$, $a = 0$ and $b = 1$. We obtain the same optimal shape with different initial guesses presented in Figures 1 and 2. The algorithm which has been presented in the case of two constraints can easily be adapted to a situation with more constraints. We present in Figure 3 our results for a problem with three constraints of equal volume $0.15^2/2$.



F 2. Evolution of the level sets for a problem with two constraints (the same as the ones of the Figure 1)



F 3. Initial and optimized level sets for a problem with three constraints

3. S

3.1. Illustration of nonexistence results

It had been pointed out in [?, ?] that problems of the type (1) in general do not have solutions. However, the relaxed problem

$$\begin{aligned} \text{Minimize } E(u) &:= \int_{\Omega} f(x, u(x), \nabla u(x)) dx, \\ &|\{x \in \Omega, u(x) = a\}| \geq \alpha, \\ &|\{x \in \Omega, u(x) = b\}| \geq \beta, \end{aligned} \tag{7}$$

admits a solutions whenever f satisfies some standard convexity and growth conditions [?]. Our previous numerical computations solve (7), and in the case of $f(x, u, \nabla u) = |\nabla u|^2$ it has been proved already in [?] that any solution of (7) also solves (1).

In this subsection we want to consider a situation where existence of a solution for (1) fails. To this aim we choose $f(x, u, \nabla u) = |\nabla u|^2 + |u|$ and try to compute numerically a solution of the ill-posed problem (7) for $a = 0$, $b = 1$ and $\alpha = \beta = \pi(0.15)^2$ on the unit disk Ω . As we can observe on Fig. 4, the resulting level set of the constraint corresponding to $a = 0$ is strictly larger than the one which is prescribed. Actually, the area of that level set is approximatively equal to $0.0872 > \pi(0.15)^2$. In that sense, our numerical simulation illustrates the fact that non existence can occur for problem (1).

3.2. Discontinuous parameter dependence

If $u^{\alpha,\beta}$ denotes the solution to a volume constrained problem of the type (1) then it is a natural question whether $u^{\alpha,\beta}$ depends (in an appropriate sense) continuously on α and β . It turns out that this is in general not the case, in fact we have the following result:

Theorem 3.1. *If we set $f(u, \nabla u) = |\nabla u|^2$ and $\Omega = (0, 1)^2$ then the minimizers $u^{\alpha,\beta}$ of the problem (1) do not depend continuously on α and β , more precisely: There is an $\varepsilon > 0$ such that $\alpha \mapsto u^{\alpha, 1-\alpha-\varepsilon}$ is not continuous in α with respect to the L^1 -norm.*

To prove this result we use the Γ -limit of the problem (1). We briefly recall the definition of Γ -convergence and refer the reader for any details to the books of Braides and Dal Maso [?, ?]:

Definition 3.2 (Γ -convergence). Let F_n be a sequence of functionals on a Banach space X . Then we say that F_n is Γ -converging in X to the functional F and denote $X - \Gamma - \lim F_n = F$ (or $F_n \xrightarrow{\Gamma} F$) if

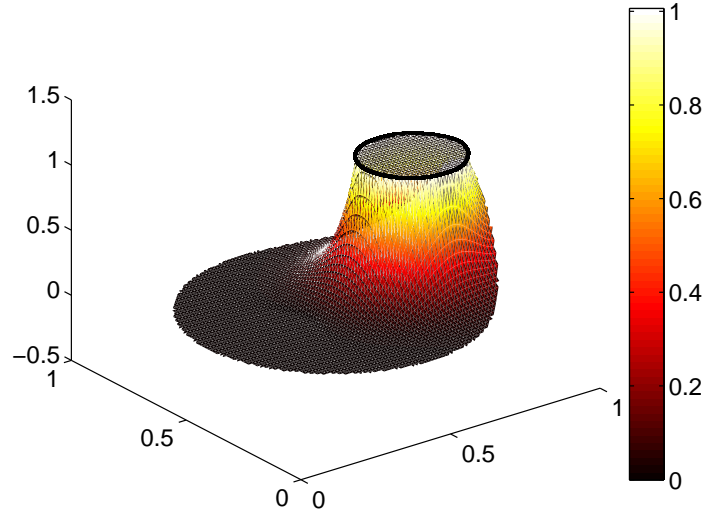
(i) For every $u \in X$ and for all $u_n \rightarrow u$ in X we have

$$\liminf_{n \rightarrow \infty} F_n(u_n) \geq F(u). \quad (8)$$

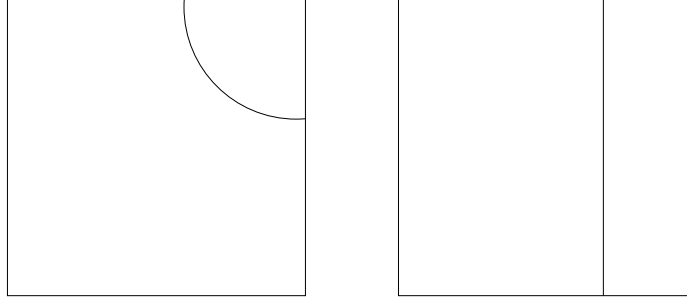
(ii) For every $u \in X$ there exists a sequence $u_n \subset X$ such that $u_n \rightarrow u$ and

$$\limsup_{n \rightarrow \infty} F_n(u_n) \leq F(u). \quad (9)$$

Inequality (8) is called Γ -liminf inequality and (9) is called Γ -limsup inequality. Such a Γ -limit has been derived for the case $\alpha + \beta \rightarrow 1$ and $f(u, \nabla u) = |\nabla u|^2$ in [?]. A generalization can be found in [?]. Let $\Omega \subset \mathbb{R}^N$ be an bounded open set.



F 4. Computed minimizer u of a relaxed problem (7) which does not satisfy the constraints of the exact problem (1), since its zero level set is too big. This illustrates the nonexistence of solutions for (1) in the two-dimensional case (see text for details).



F 5. Type I and type II solutions.

For fixed $\alpha, \beta \in (0, |\Omega|)$, we define the following functional

$$F_{\alpha,\beta} := \begin{cases} \gamma \int_{\Omega} |\nabla u|^2 dx & \text{if } u \in \mathcal{A}_{\alpha,\beta}, \\ +\infty & \text{elsewhere in } L^1(\Omega), \end{cases}$$

where $\gamma := |\Omega| - (\alpha + \beta)$ and

$$\mathcal{A}_{\alpha,\beta} := \{u \in H^1(\Omega) : |\{u = 0\}| = \alpha \text{ and } |\{u = 1\}| = \beta\}.$$

Then we can state the theorem from [?] as follows:

Theorem 3.3. *Let $\bar{\alpha} \in (0, |\Omega|)$. Then*

$$\Gamma(L^1)\text{-} \lim_{\substack{\alpha \rightarrow \bar{\alpha} \\ \beta \rightarrow |\Omega| - \bar{\alpha}}} F_{\alpha,\beta} = G_{\bar{\alpha}},$$

with $G_{\bar{\alpha}}$ given by

$$G_{\bar{\alpha}} := \begin{cases} \mathcal{H}^1(\{u = 0\})^2 & \text{if } u \in BV(\Omega, \{0, 1\}) \text{ and } |\{u = 0\}| = \bar{\alpha}, \\ +\infty & \text{elsewhere in } L^1(\Omega). \end{cases} \quad (10)$$

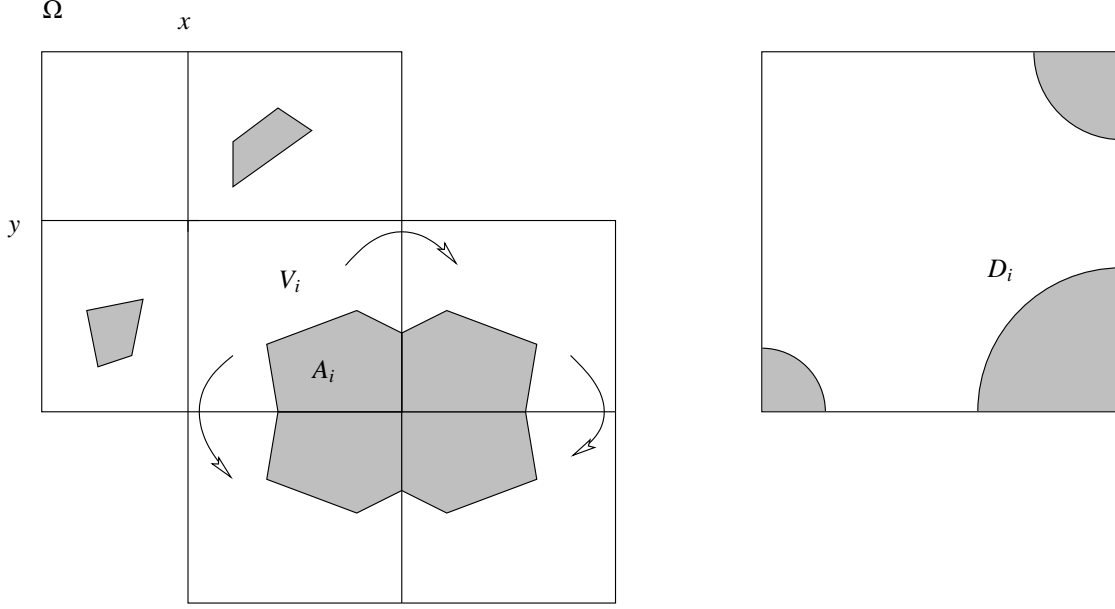
This limit problem is much more accessible to analytical investigations. In particular we can set $A := \{u = 0\}$ and $B := \{u = 1\}$ and then the minimizers of $G_{\bar{\alpha}}$ correspond to minimizers of the Dido's problem [?]: Minimize $\mathcal{H}^1(\Gamma)$ such that Γ separates Ω in open sets A and B with $|A| = \alpha$ and $|B| = |\Omega| - \alpha$. The solutions of this problem can be explicitly computed. In the following lemma we summarize the situation on the unit square:

Lemma 3.4. *Let $\Omega = (0, 1)^2$, $\alpha > 0$, then there exists a set $\Gamma \subset \Omega$ minimizing $\mathcal{H}^1(\Gamma)$ among all sets with the property that there exist disjoint open sets $A, B \subset \Omega \setminus \Gamma$ with $|A| = \alpha$, $|B| = 1 - \alpha$ and $\Omega = A \cup B \cup \Gamma$.*

- (i) *If $\alpha < 1/\pi$ or $\alpha > 1 - 1/\pi$ then Γ is the segment of a circle with center in one of the corner points of Ω . (Type I solution, see Fig. 5.)*
- (ii) *If $1/\pi < \alpha < 1 - 1/\pi$ then Γ is a straight line parallel to a side of Ω . (Type II solution, see Fig. 5.)*
- (iii) *If $\alpha = 1/\pi$ or $\alpha = 1 - 1/\pi$ then Γ is either a circle segment or a straight line.*

This Lemma seems to be folklore, but for the reader's convenience we give a proof using the isoperimetric inequality:

Proof. By symmetry we can assume that Γ is a solution of the problem for $\alpha \in (0, 1/2]$, moreover we assume first that $\ell := \mathcal{H}^1(\Gamma) < 1$. Denote the four corner points in the square Ω by Q_i and the sides by S_i . Since $\ell < 1$ the set projection π_i of Γ onto S_i satisfies $\pi_i(\Gamma) \neq S_i$. Let $x \in S_1 \setminus \pi_1(\Gamma)$ and $y \in S_2 \setminus \pi_2(\Gamma)$. Then the cross-shaped set $\{(x_1, x_2) \in \Omega \mid x_1 = x \text{ or } y_1 = y\}$ does not intersect with A , therefore we can decompose Ω along this cross into four disjoint connected open sets V_1, \dots, V_4 such that $\bigcup_i V_i = \bar{\Omega}$ and each V_i contains the corner point Q_i and none of the



F 6. The construction for the proof of Lemma 3.4.

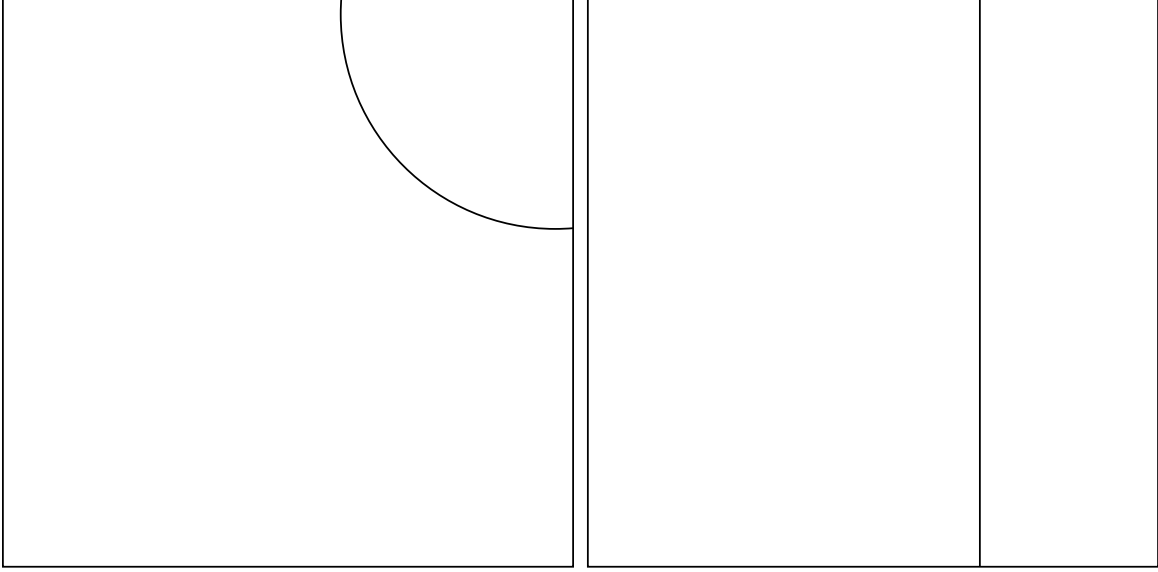
other corner points. We observe that since V_i open, $\partial V_i \cap A \subset \partial \Omega$. We can now mirror V_i and $A \cap V_i$ three times along the adjacent sides of the square Ω (see Fig. 6) to obtain a larger set $A_i \subset \mathbb{R}^2$. Since $\partial A \cap \partial V_i$ was a subset of the mirror axis, we can now neglect the boundary and apply the isoperimetric inequality on the sets A_i , hence proving that they minimize their boundary length (under fixed volume) when they are discs. We can center these disks without loss of generality on Q_i and denote them by D_i and $D := \bigcup_i D_i$. Due to the minimality property of the boundary length, we have $\ell = \mathcal{H}^1(\Gamma) \geq \frac{1}{4} \sum_i \mathcal{H}^1(\partial D_i)$. Since $\ell < 1$, the disks D_i must be disjoint. (Otherwise the sum of two of their radii r_i would have to exceed the distance between two corner points, i.e. 1, but that would imply $1 > \ell \geq (r_1 + r_2)2\pi/4 > \pi/2$.) Since the disks are disjoint, we have $|D| = \sum_i |D_i| = |A|$. For the boundary length we have seen that $\mathcal{H}^1(\Gamma) \geq \frac{1}{4} \sum_i \mathcal{H}^1(\partial D_i)$ with equality if and only if Γ consists of at most four arcs with centers in Q_i . It is now easy to check that the optimal configuration among these sets is given by exactly one arc with center in some Q_i . Since our initial assumption $\ell < 1$ is feasible if $\alpha < 1/\pi$, we have proved the first point of the theorem.

The last two points of the theorem follow easily: We know that in both cases there exists a Γ with $\mathcal{H}^1(\Gamma) = 1$. Suppose we could do better, then Γ would satisfy $\mathcal{H}^1(\Gamma) < 1$ and we could apply the argument above, proving that Γ must be an arc with center in some Q_i . Such an arc, however, would have a length larger than 1 (or in the case $\alpha = 1/\pi$ at least not less) which contradicts the assumption. \square

Proof of Theorem 3.1: Assume that for all $\varepsilon > 0$ the function $h_\varepsilon(\alpha) := u^{\alpha, 1-\alpha-\varepsilon}$ is continuous in the L^1 -norm. We know by the Γ -convergence that $u^{\alpha, 1-\alpha-\varepsilon} \rightarrow u^\alpha$ in L^1 where u^α denotes the minimizer of the Γ -limit problem. Hence, for $\alpha < 1/\pi$ the functions $h_\varepsilon(\alpha)$ converge to a limit function $h(\alpha)$ of the type I as $\varepsilon \rightarrow 0$ (see Fig. 5), for $1/\pi\alpha < 1 - 1/\pi$, however, the functions $h_\varepsilon(\alpha)$ converge to a function of the type II (see Fig. 5). For $\alpha = 1/\pi$ we denote the two possible solutions of the limit problem by u^I and u^{II} . The L^1 -distance between u^I and u^{II} is larger than 0.6 (as a small computation shows). We do not necessarily have uniform convergence of h_ε as $\varepsilon \rightarrow 0$, hence we need the following construction:

Let us fix α^1, α^2 such that $\alpha^1 < 1/\pi < \alpha^2$ and

$$\|h(\alpha^1) - u^I\|, \|h(\alpha^2) - u^{II}\| < 1/100 \quad (11)$$



F 7. Global minimizers for the parameters $\alpha = 0.55, \beta = 0.15$ (left) and $\alpha = 0.5, \beta = 0.2$ (right) on a square with side length 0.9. Although the parameters are very close, the solutions are not.

(We can ensure this by choosing α^1 and α^2 close to $1/\pi$ since the minimizers of the limit problem are continuous outside $1/\pi$.)

Next, we choose sequences α_n^1, α_n^2 and ε_n , such that $\varepsilon_n < 1/n$, $\alpha_n^1 \rightarrow \alpha^1$, $\alpha_n^2 \rightarrow \alpha^2$ and $\|h_{\varepsilon_n}(\alpha_n^1) - h(\alpha^1)\| < 1/n$, $\|h_{\varepsilon_n}(\alpha_n^2) - h(\alpha^2)\| < 1/n$. (By the Γ -convergence we know that minimizers of the volume constraint problem converge for $\varepsilon \rightarrow 0$ to minimizers of the limit problem, hence we can find such sequences.)

Now we choose a sequence of α_n^0 that lies in between α_n^1 and α_n^2 and prove that the corresponding solutions of the volume constrained problem cannot converge to a solution of the limit problem:

Let α_n^0 satisfy $\alpha_n^1 < \alpha_n^0 < \alpha_n^2$. Using the (supposed) continuity of h we can apply the intermediate value theorem to find such an α_n^0 such that $\|h_{\varepsilon_n}(\alpha_n^0) - h_{\varepsilon_n}(\alpha_n^1)\| > 1/10$ and $\|h_{\varepsilon_n}(\alpha_n^0) - h_{\varepsilon_n}(\alpha_n^2)\| > 1/10$. Since the sequence α_n^0 is uniformly bounded, we can select a converging subsequence and, using the Γ -convergence, its limit α^0 satisfies $\|h(\alpha^0) - h(\alpha^1)\| \geq 1/10$ and $\|h(\alpha^0) - h(\alpha^2)\| \geq 1/10$.

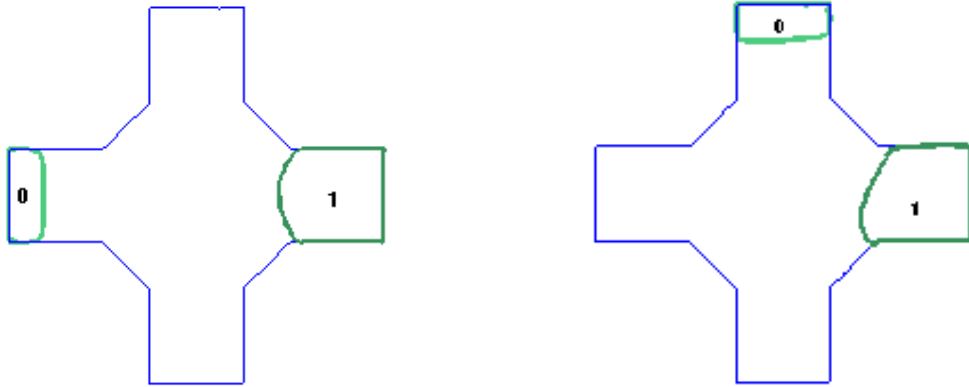
Using this together with (11) and $\|u^I - u^{II}\| > 0.6$ leads to a contradiction. Hence at least for sufficiently small $\varepsilon > 0$ the function h_ε cannot be continuous. \square

We illustrate this behavior with numerical computations (Fig. 7) using the algorithm introduced in Section 2.

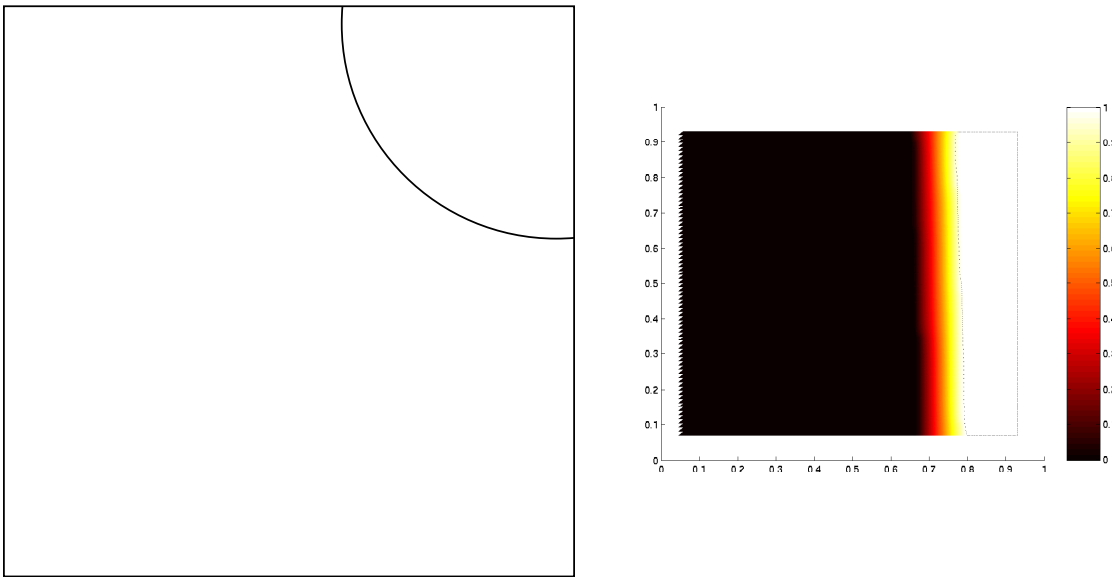
3.3. Existence of local minimizers

Our algorithm searches for minimizers which are not necessarily *global* minimizers. In one dimension it was possible to characterize local minimizer completely with analytical methods [?]. However, on convex domains of dimension $n \geq 2$ these methods do not work and it had been conjectured that in fact every minimizer is global. It is relatively simple to see examples of local minimizers in nonconvex domains (compare Fig. 8 for a numerical computation). However, our computation hinted that also on the square there can be genuinely local minimizers, compare Fig. 9.

In the following we present a proof of the existence of genuinely local minimizers on a square.



F 8. Global (left) and local (right) minimizer on a nonconvex domain.



F 9. Global (left) and local minimizer of the same problem as shown in the left side of Fig. 7. This example demonstrates that there are genuinely local minimizers on a convex domain, in this case a square.

Theorem 3.5 (Existence of local minimizer). *There are convex domains $\Omega \subset \mathbb{R}^2$ such that the volume-constrained minimization problem (1) with $f(x, u, \nabla u) = |\nabla u|^2$ admits (for appropriate parameters) local minimizers (with respect to the L^∞ -distance) which are not global.*

Proof. Let Ω be the unit square $(0, 1) \times (0, 1)$. For simplicity, $a = 0$ and $b = 1$. We choose $\alpha < \frac{1}{\pi}$ and $\beta = 1 - \alpha - \gamma$ where $\gamma > 0$ is chosen small enough such that

$$\gamma < \frac{\alpha}{2}. \quad (12)$$

We define our candidate v for a local minimizer by a one-dimensional piecewise affine construction:

$$v(x, y) := \begin{cases} 1 & , \quad x < \beta \\ \frac{1-\alpha-x}{\gamma} & , \quad \beta \leq x < 1 - \alpha \\ 0 & , \quad 1 - \alpha \leq x \end{cases}.$$

We compute the energy of v as

$$\int_{\Omega} |\nabla v|^2 = \int_0^\gamma \left| \frac{d}{dx} \frac{x}{\gamma} \right|^2 = \frac{1}{\gamma}. \quad (13)$$

For $\gamma \rightarrow 0$, the function v converges in L^1 to a local minimizer of the Γ -limit functional which is not a global minimizer, compare Lemma 3.4. Therefore, for $\gamma > 0$ sufficiently small, v cannot be a global minimizer. It is therefore sufficient to prove that it is a local minimizer.

Let us suppose that there is another function w in the neighborhood of v with a smaller energy, more precisely suppose

$$\|w - v\|_{L^\infty} < 1/3 \quad (14)$$

and $\int_{\Omega} |\nabla w|^2 < \int_{\Omega} |\nabla v|^2 - \varepsilon$ for some $\varepsilon > 0$. Assume furthermore that w satisfies the same volume constraint as v . A priori, w does not need to be continuous. For the further construction it is, however, pivotal to work with a continuous function. Therefore we show that it is possible to construct a continuous function \bar{w} with the same properties:

We observe first, that w cannot have a ‘‘jump from zero to one’’, i.e. there cannot be a point $x \in \Omega$ such that there are sequences x_n and x'_n , both converging to x with $w(x_n) \rightarrow 0$ and $w(x'_n) \rightarrow 1$: if such a point existed, then (thanks to the continuity of v) we have $|w(x_n) - v(x_n) + v(x'_n) - w(x'_n)| \rightarrow 1$. On the other hand, using (14), we have $|w(x_n) - v(x_n)| < 1/3$ and $|w(x'_n) - v(x'_n)| < 1/3$. Together with the triangle inequality, this leads to a contradiction.

We denote $\Omega_0 := \{x \in \Omega; w(x) = 0\}$ and $\Omega_1 := \{x \in \Omega; w(x) = 1\}$. Since there is no jump from zero to one, we have $\bar{\Omega}_0 \cap \bar{\Omega}_1 = \emptyset$ and we can therefore define

$$\bar{w}(x) := \begin{cases} 0, & x \in \bar{\Omega}_0, \\ 1, & x \in \bar{\Omega}_1, \\ w(x), & x \in \Omega \setminus (\bar{\Omega}_0 \cup \bar{\Omega}_1) =: T. \end{cases}$$

The set T is open by construction. For each $x \in \partial T \setminus \partial\Omega$ there is *either* a sequence $x_n \rightarrow x$ such that $w(x_n) \rightarrow 0$ or a sequence $x'_n \rightarrow x$ such that $w(x'_n) \rightarrow 1$. Denote the corresponding sets of boundary points by D_0 and D_1 , then D_0 and D_1 form a disjoint union of $\partial T \setminus \partial\Omega$. Moreover, given that w has no jump from zero to one, D_0 and D_1 must be apart from each other, i.e. $\bar{D}_0 \cap \bar{D}_1 = \emptyset$. In other words, on $\partial T \setminus \partial\Omega$, \bar{w} is locally constant.

The function \bar{w} is by construction in $H^1(T)$, where T is open. Thus we can approximate \bar{w} on T by continuous functions in the H^1 -norm, where we respect the boundary conditions on $\partial T \setminus \partial\Omega$. Let w_n be such an approximating sequence, then for n large enough, $\|w_n - \bar{w}\|_{H^1(T)} < \varepsilon/2$.

We can now define \tilde{w} by

$$\tilde{w}(x) := \begin{cases} 0, & x \in \bar{\Omega}_0, \\ 1, & x \in \bar{\Omega}_1, \\ w_n(x), & x \in T. \end{cases}$$

\tilde{w} is continuous by construction. Moreover, its energy is still lower than the energy of v :

$$\int_{\Omega} |\nabla \tilde{w}|^2 = \int_T |\nabla w_n|^2 < \int_T |\nabla \tilde{w}|^2 + \frac{\varepsilon}{2} \leq \int_{\Omega} |\nabla \tilde{w}|^2 + \frac{\varepsilon}{2} < \int_{\Omega} |\nabla v|^2.$$

To ease notation, we will write w instead of \tilde{w} in what follows.

The L^∞ -constraint obviously forbids w to take a value of one where v is zero and vice versa, in other words:

$$w > 0 \text{ on } (0, \beta) \times (0, 1) \text{ and } w < 1 \text{ on } (1 - \alpha, 1) \times (0, 1). \quad (15)$$

We define $L(y) := (0, 1) \times \{y\}$ and $T := \{w \in (0, 1)\}$ (the transition layer of w). Then

$$\int_0^1 |L(y) \cap \{(x, y) \in \Omega \mid w(x, y) \in (0, 1)\}| dy = |T| = \gamma,$$

where the last inequality follows from the assumption that w satisfies the volume constraint.

We denote

$$G := \{y \in (0, 1) \mid L(y) \cap \{w = 0\} \neq \emptyset \text{ and } L(y) \cap \{w = 1\} \neq \emptyset\}$$

and define on G the functions

$$B(y) := \max \{ |a - b| \mid w(a, y) = 0, w(b, y) = 1, w(t, y) \in (0, 1) \text{ for all } t \in (a, b) \}.$$

and $a(y), b(y)$ as the values of a and b maximizing $|a - b|$ in the above definition of $B(y)$.

In other words: $B(y)$ is the maximal width of a transition between zero and one on the line $L(y)$ and the boundary points of this transition are given by $(a(y), y)$ and $(b(y), y)$, compare Fig. 10 for an illustration.

If we integrate over all such maximal transitions, we get a lower bound for the total area of the transition layer:

$$\int_G b(y) dy \leq |T|.$$

We estimate the gradient of w by its partial derivative in x -direction, as we did in (13), to get the following estimate:

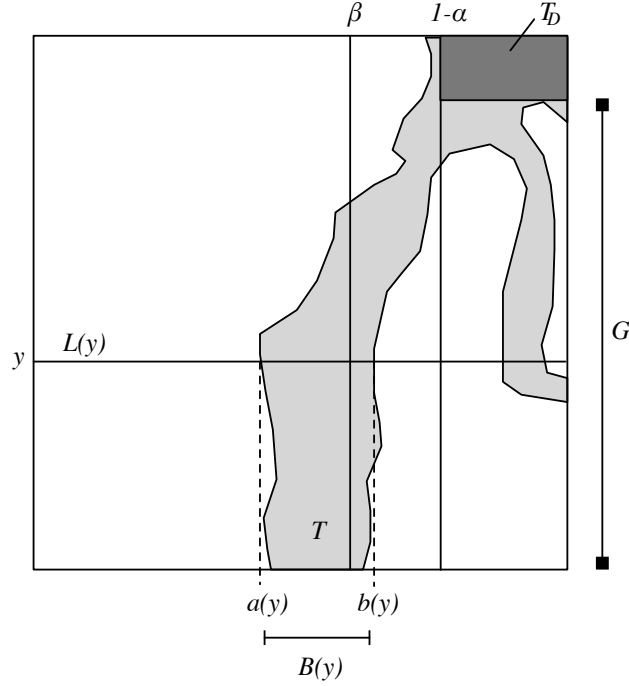
$$\begin{aligned} \int_{\Omega} |\nabla w|^2 &= \int_T |\nabla w|^2 \geq \int_G \int_0^1 |\nabla w(x, y)|^2 dx dy \\ &\geq \int_G \int_0^1 \left| \frac{\partial}{\partial x} w(x, y) \right|^2 dx dy. \end{aligned}$$

Now, instead of integrating from 0 to 1, we just integrate over the largest transition layer, i.e. from $a(y)$ to $b(y)$. We recall that $|a(y) - b(y)| = B(y)$. Using Jensen's Inequality on the inner integral, we obtain therefore

$$\int_{\Omega} |\nabla w|^2 \geq \int_G \frac{1}{B(y)} dy.$$

This estimate is only useful if we find a relation between B and the set G . Otherwise, we can choose the set G small or B large to reduce the energy. Therefore we want to estimate the size of G . Let us define some area of the transition layer T that is situated outside $(0, 1) \times G$ by

$$T_D := (0, 1) \times ((0, 1) \setminus G) \cap T,$$



F 10. Illustration of the sets T , T_D and G , the lines $L(y)$ and the maximal transitions from $a(y)$ to $b(y)$ with width $B(y) = |a(y) - b(y)|$.

compare again Fig. 10 where this set is shaded in dark grey. Let $\delta := |T_D|$ be the size of this area.

Since for $y \in (0, 1) \setminus G$ we cannot have $w(x_1, y) = 0$ and $w(x_2, y) = 1$ for two values $x_1, x_2 \in (0, 1)$, and on the other hand $w(x, y) < 1$ for $x > 1 - \alpha$ and $w(x, y) > 0$ for $x < \beta$, see (15), we need to “cover” either $(0, \beta) \times ((0, 1) \setminus G)$ or $(1 - \alpha, 1) \times ((0, 1) \setminus G)$ by the transition layer. Thus we get a lower bound for δ (taking into account that $\alpha < \beta$):

$$\delta \geq \alpha(1 - |G|).$$

Resolved for G , we obtain

$$|G| \geq 1 - \frac{\delta}{\alpha}. \quad (16)$$

Now we can continue estimating the energy of w . We first apply the Jensen Inequality with \bar{B} being the average over B on G :

$$\int_{\Omega} |\nabla w|^2 \geq \int_G \frac{1}{B(y)} dy \geq |G| \frac{1}{\bar{B}}. \quad (17)$$

Let $T_G := T|_{(0,1) \times G}$ be the transition layers on $(0, 1) \times G$. Since $T_G \cup T_D \subset T$ and T_G and T_D are disjoint, we have $|T_G| \leq |T| - |T_D|$. Using that $\delta = |T_D|$ and that $|T| = \gamma$ (volume constraint), we have $|T_G| \leq \gamma - \delta$.

On the other hand, $\int_G B(y) dy \leq |T_G|$, thus $\bar{B}|G| \leq \gamma - \delta$ or in other words $\bar{B} \leq (\gamma - \delta)/|G|$. This provides us with the necessary relation between B and the size of G .

Together with (17) we obtain

$$\int_{\Omega} |\nabla w|^2 \geq |G|^2 \frac{1}{\gamma - \delta}.$$

Inserting (16), gives

$$\int_{\Omega} |\nabla w|^2 \geq \frac{(1 - \delta/\alpha)^2}{\gamma - \delta}.$$

We calculate the difference between this energy and the energy of v , as computed in (13):

$$\begin{aligned} \int_{\Omega} |\nabla w|^2 - \int_{\Omega} |\nabla v|^2 &\geq \frac{(1 - \delta/\alpha)^2}{\gamma - \delta} - \frac{1}{\gamma} = \frac{-2\frac{\delta}{\alpha}\gamma + \frac{\delta^2}{\alpha}\gamma + \delta}{\gamma(\gamma - \delta)} \\ &\geq \frac{\delta}{\gamma(\gamma - \delta)} \left(1 - 2\frac{\gamma}{\alpha}\right). \end{aligned}$$

Using (12), we see that the right hand side is larger or equal than zero. This proves that w cannot have a smaller energy than v , thus v is a local minimizer. \square

We thank Giuseppe Buttazzo for his suggestions which helped to initiate this work.

R