



HAL
open science

Modelling hematopoiesis mediated by growth factors with applications to periodic hematological diseases

Mostafa Adimy, Fabien Crauste, Shigui Ruan

► **To cite this version:**

Mostafa Adimy, Fabien Crauste, Shigui Ruan. Modelling hematopoiesis mediated by growth factors with applications to periodic hematological diseases. *Bulletin of Mathematical Biology*, 2006, 68 (8), pp.2321-2351. 10.1007/s11538-006-9121-9 . hal-00376087

HAL Id: hal-00376087

<https://hal.science/hal-00376087>

Submitted on 16 Apr 2009

HAL is a multi-disciplinary open access archive for the deposit and dissemination of scientific research documents, whether they are published or not. The documents may come from teaching and research institutions in France or abroad, or from public or private research centers.

L'archive ouverte pluridisciplinaire **HAL**, est destinée au dépôt et à la diffusion de documents scientifiques de niveau recherche, publiés ou non, émanant des établissements d'enseignement et de recherche français ou étrangers, des laboratoires publics ou privés.

Modelling hematopoiesis mediated by growth factors: Delay equations describing periodic hematological diseases*

Mostafa Adimy^a, Fabien Crauste^a and Shigui Ruan^{b†}

Year 2005

^a*Laboratoire de Mathématiques Appliquées, UMR 5142,
Université de Pau et des Pays de l'Adour,
Avenue de l'université, 64000 Pau, France.
ANUBIS project, INRIA-Futurs
E-mail: mostafa.adimy@univ-pau.fr, fabien.crauste@univ-pau.fr*

^b*Department of Mathematics, University of Miami,
P. O. Box 249085, Coral Gables, FL 33124-4250, USA.
E-mail: ruan@math.miami.edu*

Abstract

Hematopoiesis is a complex biological process that leads to the production and regulation of blood cells. It is based upon differentiation of stem cells under the action of growth factors. A mathematical approach of this process is proposed to carry out explanation on some blood diseases, characterized by oscillations in circulating blood cells. A system of three differential equations with delay, corresponding to the cell cycle duration, is analyzed. The existence of a Hopf bifurcation for a positive steady-state is obtained through the study of an exponential polynomial characteristic equation with delay-dependent coefficients. Numerical simulations show that long period oscillations can be obtained in this model, corresponding to a destabilization of the feedback regulation between blood cells and growth factors. This stresses the localization of periodic hematological diseases in the feedback loop.

Keywords: delay differential equations, characteristic equation, delay-dependent coefficients, stability switch, Hopf bifurcation, cell population models, hematopoiesis, stem cells.

1 Introduction

Hematopoiesis is the process by which erythrocytes (red blood cells), leukocytes (white blood cells) and thrombocytes (platelets) are produced and regulated. These cells perform a variety

*Published in Bulletin of Mathematical Biology, vol 68, iss 8, 2321-2351 (2006)

†Research was partially supported by the NSF and the University of Miami.

of vital functions such as transporting oxygen, repairing lesions, and fighting infections. Therefore, the body must carefully regulate their production. For example, there are 3.5×10^{11} erythrocytes for each kilogram of body weight, so almost 7% of the body mass is red blood cells. The turnover rate is about 3×10^9 erythrocytes/kg of body weight each day, which must be carefully regulated by several O_2 sensitive receptors and a collection of growth factors and hormones. Although understanding of blood production process evolves constantly, the main outlines are clear.

Blood cells, that can be observed in blood vessels, are originated from a pool of hematopoietic pluripotent stem cells, located in the bone marrow of most of human bones. Hematopoietic pluripotent stem cells, which are undifferentiated cells with a high self-renewal and differentiation capacity, give rise to committed stem cells, which form bands of cells called colony forming units (CFU). These committed stem cells are specialized in the sense that they can only produce one of the three blood cell types: red blood cells, white cells or platelets. Colony forming units differentiate in precursor cells, which are not stem cells anymore, because they have lost their self-renewal capacity. These cells eventually give birth to mature blood cells which enter the bloodstream.

One can see that the hematopoiesis process is formed by a succession of complex differentiations from hematopoietic pluripotent stem cells to precursors. These different differentiations, occurring in the bone marrow, are mainly mediated by growth factors. They are proteins acting, in some way, like hormones playing an activator/inhibitor role. Each type of blood cell is the result of specific growth factors acting at a specific moment during the hematopoiesis process.

The red blood cells production, for example, called erythropoiesis, is mainly mediated by erythropoietin (EPO), a growth factor produced at 90% by the kidneys. Erythropoietin is released in the bloodstream due to tissue hypoxia. It stimulates the erythropoiesis in the bone marrow, causing an increase in circulating red blood cells, and consequently an increase in the tissue pO_2 levels. Then the release of erythropoietin decreases and a regulation of the process is observed: there is a feedback control from the blood to the bone marrow. In extreme situations, like bleeding or moving to high altitudes, where needs in oxygen are important, erythropoiesis is accelerated.

White blood cells are produced during leukopoiesis and the main growth factors acting on their regulation are Granulocyte-CSF (Colony Stimulating Factor), Macrophage-CSF, Granulocyte-Macrophage-CSF, and different interleukins (IL-1, IL-2, IL-6, IL-8, etc.). Platelets are mainly regulated by thrombopoietin (TPO), which acts similarly to erythropoietin.

The hematopoiesis process sometimes exhibits abnormalities in blood cells production, causing the so-called dynamical hematological diseases. Most of these diseases seem to be due to a destabilization of the pluripotent hematopoietic stem cell compartment caused by the action of one or more growth factors. For erythropoiesis, abnormalities in the feedback between erythropoietin and the bone marrow production are suspected to cause periodic hematological disorders, such as autoimmune hemolytic anemia. Cyclic neutropenia, one of the most intensively studied periodic hematological diseases characterized by a fall of neutrophils (white blood cells) counts every three weeks, is now known to be due to a destabilization of the apoptotic (mortality) rate during the proliferating phase of the cell cycle.

Mathematical models of hematopoiesis have been intensively studied since the end of the 1970s. To our knowledge, Mackey [9, 10] proposed the first model of hematopoiesis in 1978 and 1979. This model takes the form of a delay differential equation. Since then it has been modified and studied by many authors, including Mackey. The works of Mackey and Rudnicki [14, 15] and Mackey and Rey [11, 12, 13] deal with age-maturity structured models of hematopoiesis based on the model of Mackey [9]. Recently, Pujon-Menjouet *et al.* [18, 19]

have studied the model of Mackey [9, 10] and obtained the existence of periodic solutions, with long periods comparing to the cell cycle duration, describing phenomena observed during some periodic hematological diseases. However, the influence of growth factors has never been explicitly incorporated in these models.

In 1995 and 1998, Belair *et al.* [3] and Mahaffy *et al.* [16] considered a mathematical model for erythropoiesis. The model is a system of age and maturity structured equations, which can be reduced to a system of delay differential equations. They showed that their model fitted well with experimental observations in normal erythropoiesis but they stressed some difficulties to reproduce pathological behavior observed for periodic hematological diseases.

In this paper we consider a system of differential equations modelling the evolution of hematopoietic stem cells in the bone marrow, of mature blood cells in the bloodstream and of the concentration of some growth factors acting on the stem cell population. A delay naturally appears in the model, describing the cell cycle duration. This approach is based on the early work of Mackey [9, 10] and the recent work of Belair *et al.* [3] and Mahaffy *et al.* [16] dealing with erythropoiesis. Our aim is to show that oscillations in such models are mainly due to the destabilization of the feedback loop between blood cells and growth factors, causing periodic hematological diseases.

The paper is organized as follows. We first describe the biological background leading to the mathematical model. After showing the existence of a positive equilibrium, we analyze its local asymptotic stability. This analysis is performed through the study of a characteristic equation which takes the form of a third degree exponential polynomial with delay-dependent coefficients. Using the approach of Beretta and Kuang [4], we show that the positive steady-state can be destabilized through a Hopf bifurcation and stability switches can occur. We illustrate our results with numerical simulations and show that long period oscillations can be observed in this model, as it can be observed in patients with some periodic hematological diseases.

2 The Model

In the bone marrow, hematopoietic stem cells are divided in two groups: proliferating and non-proliferating, or quiescent, cells. The existence of a quiescent phase, also called G_0 phase, in the cell cycle has been proved, for example, by Burns and Tannock [5]. Quiescent cells represent the major part of hematopoietic stem cells, that is about 90% of the hematopoietic stem cell population. Proliferating cells are cells actually in cycle: they are committed to divide during mitosis after, in particular, having synthesized DNA. Immediately after division, proliferating cells enter the G_0 phase where they can stay their entire life.

We denote by $Q(t)$ and $P(t)$ the quiescent and proliferating cell populations at time t , respectively. In the proliferating phase, apoptosis, which is a programmed cell death, controls the cell population and eliminates deficient cells. We assume that the apoptosis rate, denoted by γ , is constant and nonnegative. In the G_0 phase, cells can disappear, by natural death, with a rate δ . They also differentiate in mature blood cells with a rate $g(Q)/Q$, where the function g is assumed to be nonnegative with $g(0) = 0$, because no cell can become mature when there is no hematopoietic stem cell, and continuously differentiable. Moreover, we assume that the function $Q \mapsto g(Q)/Q$ is nondecreasing for $Q \geq 0$, which is equivalent to

$$0 \leq g'(0) \leq \frac{g(Q)}{Q} \leq g'(Q) \quad \text{for } Q > 0. \quad (1)$$

It follows, in particular, that g is nondecreasing and $\lim_{Q \rightarrow +\infty} g(Q) = +\infty$.

Quiescent cells can also be introduced in the proliferating phase during their life in order to ensure the population renewal, at a nonconstant rate β . It is generally accepted that β depends on the total population of non-proliferating cells [9, 21]. However, the production of mature blood cells is also mediated by growth factors through the stem cell population: growth factors induce differentiation and maturation of hematopoietic cells via the stem cell compartment. Thus, the dependence of β on growth factors must be represented. We assume that β is continuously differentiable. Moreover, in the particular case of erythropoiesis, β is an increasing function of the erythropoietin concentration, because a release of erythropoietin increases the production of red blood cells. Hence, we assume that β is an increasing function of the growth factor concentration, with $\beta(Q, 0) = 0$, and a nonincreasing function of the G_0 phase population [9].

Thus, the equations modelling the differentiation of hematopoietic stem cells in the bone marrow are

$$\begin{aligned} \frac{dQ}{dt} &= -\delta Q(t) - g(Q(t)) - \beta(Q(t), E(t))Q(t) \\ &\quad + 2e^{-\gamma\tau} \beta(Q(t-\tau), E(t-\tau))Q(t-\tau), \end{aligned} \tag{2}$$

$$\begin{aligned} \frac{dP}{dt} &= -\gamma P(t) + \beta(Q(t), E(t))Q(t) \\ &\quad - e^{-\gamma\tau} \beta(Q(t-\tau), E(t-\tau))Q(t-\tau), \end{aligned} \tag{3}$$

where $E(t)$ is the growth factor concentration at time t . The parameter $\tau > 0$ denotes the average time needed by a proliferating cell to divide, that is, τ is an average cell cycle duration. The last term in equation (2) represents the amount of cells coming from the proliferating phase at division. They are in fact quiescent cells introduced in the proliferating phase one generation earlier. The factor 2 represents the division of each proliferating cell in two daughter cells.

At the end of their development, precursors give birth to mature blood cells, which are introduced in the bloodstream. We denote by $M(t)$ the population of circulating mature blood cells. These cells only proceed from G_0 cells at the rate $g(Q)$. Mature blood cells are degraded, in the bloodstream, at a rate $\mu \geq 0$. Red blood cells usually live an average of 120 days, whereas platelets live about one week and white blood cells only few hours. Mature blood cell population satisfies the differential equation

$$\frac{dM}{dt} = -\mu M(t) + g(Q(t)).$$

The growth factor concentration is governed by a differential equation with an explicit negative feedback. This feedback describes the control of the bone marrow production on the growth factor production, explained in the previous section. This control acts by the mean of circulating blood cells: the more circulating blood cells the less growth factor produced. We denote by f the feedback control. The function f depends on the population of circulating cells M and is positive, decreasing and continuously differentiable. Then

$$\frac{dE}{dt} = -kE(t) + f(M(t)),$$

where $k \geq 0$ is the disappearance rate of the growth factor. In fact, the action of the mature blood cell population on the production of growth factor is not immediate: it is slightly delayed, but this delay is negligible in front of the cell cycle duration, so we do not mention it.

At this point, one can notice that system (2)–(3) is not coupled: the population in the proliferating phase is not needed in the description of the hematopoiesis process, since circulating blood cells only come from quiescent cells. From a mathematical point of view, the solution of (2) does not depend on the solution of (3) whereas the converse is not true. Consequently, we concentrate on the system of delay differential equations

$$\begin{cases} \frac{dQ}{dt} = -\delta Q(t) - g(Q(t)) - \beta(Q(t), E(t))Q(t) \\ \quad + 2e^{-\gamma\tau}\beta(Q(t-\tau), E(t-\tau))Q(t-\tau), \\ \frac{dM}{dt} = -\mu M(t) + g(Q(t)), \\ \frac{dE}{dt} = -kE(t) + f(M(t)). \end{cases} \quad (4)$$

First, one can notice that the solutions $Q(t)$, $M(t)$ and $E(t)$ of system (4) are nonnegative.

Let us suppose, by contradiction, that there exists $t_0 > 0$ and $\varepsilon > 0$ such that $Q(t) > 0$ for $t < t_0$, $Q(t_0) = 0$ and $Q(t) < 0$ for $t \in (t_0, t_0 + \varepsilon)$. Then, since $g(0) = 0$,

$$\frac{dQ}{dt}(t_0) = 2e^{-\gamma\tau}\beta(Q(t_0-\tau), E(t_0-\tau))Q(t_0-\tau) > 0.$$

This yields a contradiction. Hence $Q(t)$ is nonnegative. Since the functions g and f are nonnegative, we similarly obtain that $M(t)$ and $E(t)$ are nonnegative.

Secondly, one can notice that the solutions of (4) are bounded when $\delta + g'(0) > 0$.

We first concentrate on the solution $E(t)$. Using a classical variation of constant formula, we obtain, for $t \geq 0$,

$$E(t) = e^{-kt}E(0) + e^{-kt} \int_0^t e^{ks} f(M(s)) ds.$$

Since the function f is decreasing and bounded, we have

$$E(t) \leq e^{-kt}E(0) + \frac{f(0)}{k}(1 - e^{-kt}).$$

This yields that, if $E(0) \leq f(0)/k$, then $E(t) \leq f(0)/k$ and, if $f(0)/k < E(0)$, then $E(t) \leq E(0)$. Consequently, $E(t)$ is bounded.

Now we focus on the solution $Q(t)$. If Q is bounded then the mapping $t \mapsto g(Q(t))$ is bounded so we will obtain that $M(t)$ is bounded using similar arguments than for the above case.

Let $C > 0$ be a bound of E and assume that $\lim_{Q \rightarrow \infty} \beta(Q, E) = 0$, for all $E \geq 0$, and that $\delta + g'(0) > 0$. If $2e^{-\gamma\tau}\beta(0, C) \geq \delta + g'(0)$, then, since the mapping $Q \mapsto \beta(Q, E)$ is decreasing and tends to zero at infinity, there exists $Q_0 \geq 0$ such that $2e^{-\gamma\tau}\beta(Q_0, C) = \delta + g'(0)$ and $2e^{-\gamma\tau}\beta(Q, C) < \delta + g'(0)$ for $Q > Q_0$. If $2e^{-\gamma\tau}\beta(0, C) > \delta + g'(0)$ then this result holds for $Q_0 = 0$.

We then set

$$Q_1 := 2e^{-\gamma\tau} \frac{\beta(0, C)Q_0}{\delta + g'(0)}.$$

Let $Q \geq Q_1$ be fixed and let $0 \leq y \leq Q$. If $y \leq Q_0$, then

$$2e^{-\gamma\tau}\beta(y, C)y \leq 2e^{-\gamma\tau}\beta(0, C)Q_0 = (\delta + g'(0))Q_1 \leq (\delta + g'(0))Q.$$

On the other hand, if $y > Q_0$, then

$$2e^{-\gamma\tau}\beta(y, C)y < (\delta + g'(0))y < (\delta + g'(0))Q.$$

Thus,

$$2e^{-\gamma\tau} \max_{0 \leq y \leq Q} \beta(y, C)y \leq (\delta + g'(0))Q, \quad \text{for } Q \geq Q_1.$$

We assume now, by contradiction, that $\limsup Q(t) = +\infty$. Then there exists $t_0 > \tau$ such that

$$Q(t) \leq Q(t_0), \quad \text{for } t \in [t_0 - \tau, t_0], \quad \text{and} \quad Q(t_0) > Q_1.$$

Since the function $E \mapsto \beta(Q, E)$ is increasing, we deduce, from (1), that

$$Q'(t_0) \leq g'(0)Q(t_0) - g(Q(t_0)) - \beta(Q(t_0), E(t_0))Q(t_0) < 0.$$

We obtain a contradiction so Q is bounded.

These results are stated in the following proposition.

Proposition 2.1. *Assume that $\lim_{Q \rightarrow \infty} \beta(Q, E) = 0$, for all $E \geq 0$, and that $\delta + g'(0) > 0$. Then the solutions of system (4) are bounded.*

A solution $(\bar{Q}, \bar{M}, \bar{E})$ of (4) is a steady-state or equilibrium if

$$\frac{d\bar{Q}}{dt} = \frac{d\bar{M}}{dt} = \frac{d\bar{E}}{dt} = 0,$$

that is

$$\begin{cases} \delta\bar{Q} + g(\bar{Q}) &= (2e^{-\gamma\tau} - 1)\beta(\bar{Q}, \bar{E})\bar{Q}, \\ \mu\bar{M} &= g(\bar{Q}), \\ k\bar{E} &= f(\bar{M}). \end{cases} \quad (5)$$

We make some remarks. It would be nonsense to suppose that the rates μ and k may vanish, because we cannot allow the blood cell population to grow indefinitely and growth factor is necessarily degraded while in blood. Hence, we assume that $\mu > 0$ and $k > 0$.

Since $g(0) = 0$, it follows that $(0, 0, f(0)/k)$ is always a steady-state of (4) that we will call in the following the *trivial equilibrium* of (4). This steady-state corresponds to the extinction of the cell population with a saturation of the growth factor concentration.

From now on and in the following, we assume that

$$\lim_{Q \rightarrow +\infty} \beta\left(Q, \frac{1}{k}f\left(\frac{1}{\mu}g(Q)\right)\right) = 0. \quad (6)$$

Since $\lim_{Q \rightarrow +\infty} g(Q) = +\infty$ and $\lim_{M \rightarrow +\infty} f(M) = 0$, this property holds true if $\beta(Q, 0) = 0$, for all $Q \geq 0$, or $\lim_{Q \rightarrow +\infty} \beta(Q, E) = 0$, for all $E \geq 0$.

Let us assume that (4) has a nontrivial positive steady-state (Q^*, M^*, E^*) , that is, $Q^* > 0$, $M^* > 0$ and $E^* > 0$ satisfy (5). Then

$$(2e^{-\gamma\tau} - 1)\beta(Q^*, E^*) = \delta + \frac{g(Q^*)}{Q^*}, \quad M^* = \frac{1}{\mu}g(Q^*) \quad \text{and} \quad E^* = \frac{1}{k}f(M^*). \quad (7)$$

Necessarily, we have

$$2e^{-\gamma\tau} - 1 > 0,$$

which is equivalent to

$$\tau < \frac{\ln(2)}{\gamma}. \quad (8)$$

We assume that (8) holds. Since $Q^* > 0$ and

$$E^* = \frac{1}{k}f(M^*) = \frac{1}{k}f\left(\frac{1}{\mu}g(Q^*)\right),$$

we must have

$$(2e^{-\gamma\tau} - 1)\beta\left(Q^*, \frac{1}{k}f\left(\frac{1}{\mu}g(Q^*)\right)\right) = \delta + \frac{g(Q^*)}{Q^*}. \quad (9)$$

Let us define

$$\tilde{\beta}(Q) := \beta\left(Q, \frac{1}{k}f\left(\frac{1}{\mu}g(Q)\right)\right). \quad (10)$$

Since f is decreasing, g is nondecreasing and $\beta(Q, E)$ is decreasing with respect to Q and increasing with respect to E , we obtain

$$\tilde{\beta}'(Q) = \frac{\partial\beta}{\partial Q}\left(Q, \frac{1}{k}f\left(\frac{1}{\mu}g(Q)\right)\right) + \frac{g'(Q)}{k\mu}f'\left(\frac{1}{\mu}g(Q)\right)\frac{\partial\beta}{\partial E}\left(Q, \frac{1}{k}f\left(\frac{1}{\mu}g(Q)\right)\right) < 0.$$

Therefore, $\tilde{\beta}$ is decreasing,

$$\tilde{\beta}(0) = \beta\left(0, \frac{1}{k}f(0)\right) \quad \text{and} \quad \lim_{Q \rightarrow +\infty} \tilde{\beta}(Q) = 0.$$

Moreover, from (1), the function $Q \mapsto \delta + g(Q)/Q$ is nondecreasing. Consequently, equation (9) has a positive solution, which is unique, if and only if

$$\delta + g'(0) < (2e^{-\gamma\tau} - 1)\beta\left(0, \frac{1}{k}f(0)\right). \quad (11)$$

These results are summarized in the next proposition.

Proposition 2.2. *Assume that $\mu > 0$ and $k > 0$.*

(i) *If*

$$\delta + g'(0) > (2e^{-\gamma\tau} - 1)\beta\left(0, \frac{1}{k}f(0)\right), \quad (12)$$

then system (4) has a unique steady-state $(0, 0, f(0)/k)$;

(ii) *If condition (11) holds, then system (4) has two steady-states: a trivial one $(0, 0, f(0)/k)$ and a nontrivial positive one (Q^*, M^*, E^*) , where Q^* is the unique positive solution of (9), $M^* = g(Q^*)/\mu$ and $E^* = f(M^*)/k$.*

The above proposition indicates that system (4) undergoes a transcritical bifurcation when $\delta + g'(0) = (2e^{-\gamma\tau} - 1)\beta(0, f(0)/k)$. Since the trivial steady-state $(0, 0, f(0)/k)$ corresponds, biologically, to the extinction of the cell population and a saturation of the growth factor concentration, it is not the more interesting equilibrium. It describes a pathological situation that can only lead to death without appropriate treatment. Therefore we focus on the local stability analysis of the other steady-state (Q^*, M^*, E^*) . One can check that condition (11), which ensures the existence of this steady-state, is equivalent to

$$\delta + g'(0) < \beta\left(0, \frac{f(0)}{k}\right) \quad \text{and} \quad 0 \leq \tau < \tau_{max} := \frac{1}{\gamma} \ln \left(\frac{2\beta\left(0, \frac{f(0)}{k}\right)}{\delta + g'(0) + \beta\left(0, \frac{f(0)}{k}\right)} \right). \quad (13)$$

One can notice that, using the implicit function theorem, we can easily show that the steady-states Q^* , M^* and E^* are continuously differentiable with respect to the cell cycle duration τ . Moreover, Q^* and M^* are decreasing functions of τ and E^* is an increasing function of τ , with $\lim_{\tau \rightarrow \tau_{max}} (Q^*(\tau), M^*(\tau), E^*(\tau)) = (0, 0, f(0)/k)$.

3 Local Stability Analysis

We concentrate on the study of the stability of the nontrivial equilibrium (Q^*, M^*, E^*) . Hence, we assume throughout this section that $\mu, k > 0$ and condition (13) holds.

We investigate the local asymptotic stability of the steady-state (Q^*, M^*, E^*) . The delay is often seen as a destabilization parameter (see, for example, Metz and Diekmann [17], Fortin and Mackey [6]), so we perform this stability analysis with respect to the delay parameter τ , which represents the cell cycle duration. We recall that Q^* , M^* and E^* satisfy (7).

We linearize (4) around the equilibrium (Q^*, M^*, E^*) . Set

$$q(t) = Q(t) - Q^*, \quad m(t) = M(t) - M^* \quad \text{and} \quad e(t) = E(t) - E^*.$$

The linearized system is

$$\begin{cases} \frac{dq}{dt} &= -Aq(t) + Bq(t - \tau) - Ce(t) + De(t - \tau), \\ \frac{dm}{dt} &= -\mu m(t) + Gq(t), \\ \frac{de}{dt} &= -ke(t) - Hm(t), \end{cases} \quad (14)$$

where the real coefficients A, B, C, D, G and H are defined by

$$\begin{aligned} A &= \delta + g'(Q^*) + \beta(Q^*, E^*) + \beta'_1(Q^*, E^*)Q^*, \\ B &= 2e^{-\gamma\tau} [\beta(Q^*, E^*) + \beta'_1(Q^*, E^*)Q^*], \\ C &= \beta'_2(Q^*, E^*)Q^* > 0, \\ D &= 2e^{-\gamma\tau} \beta'_2(Q^*, E^*)Q^* > 0, \\ G &= g'(Q^*) > 0, \\ H &= -f'(M^*) > 0. \end{aligned} \quad (15)$$

One can notice that these coefficients depend, explicitly or implicitly, on the parameter τ through the equilibrium values Q^* , M^* and E^* . However, we do not stress this dependence when we write the coefficients. Moreover, from the assumptions on β , g and f , the coefficients C , D , G and H are strictly positive.

In the above definitions, we have used the notations

$$\beta'_1(Q, E) := \frac{\partial \beta}{\partial Q}(Q, E) \quad \text{and} \quad \beta'_2(Q, E) := \frac{\partial \beta}{\partial E}(Q, E).$$

Furthermore, one can notice that

$$A - B = g'(Q^*) - \frac{g(Q^*)}{Q^*} - (2e^{-\gamma\tau} - 1) \beta'_1(Q^*, E^*)Q^* \geq 0$$

and

$$D - C = (2e^{-\gamma\tau} - 1) \beta'_2(Q^*, E^*)Q^* > 0.$$

System (14) can be written in the matrix form

$$\frac{dX}{dt} = \mathcal{A}_1 X(t) + \mathcal{A}_2 X(t - \tau)$$

with

$$X(t) = \begin{pmatrix} q(t) \\ m(t) \\ e(t) \end{pmatrix}, \quad \mathcal{A}_1 = \begin{pmatrix} -A & 0 & -C \\ G & -\mu & 0 \\ 0 & -H & -k \end{pmatrix} \quad \text{and} \quad \mathcal{A}_2 = \begin{pmatrix} B & 0 & D \\ 0 & 0 & 0 \\ 0 & 0 & 0 \end{pmatrix}.$$

Consequently, the characteristic equation of (14) is given by

$$\det(\lambda I - \mathcal{A}_1 - \mathcal{A}_2 e^{-\lambda\tau}) = 0,$$

which reduces to

$$(\lambda + \mu)(\lambda + k)(\lambda + A - Be^{-\lambda\tau}) - GH(C - De^{-\lambda\tau}) = 0. \quad (16)$$

We recall the following result: the trivial solution of system (14), or equivalently the steady-state of system (4), is asymptotically stable if all roots of (16) have negative real parts, and the stability is lost only if characteristic roots cross the axis from left to right, or right to left, that is if purely imaginary roots appear.

Remark 1. If we linearize system (4) around its trivial steady-state $(0, 0, f(0)/k)$, we obtain

$$\begin{aligned} A &= \delta + g'(0) + \beta(0, f(0)/k) > 0, & D &= 0, \\ B &= 2e^{-\gamma\tau}\beta(0, f(0)/k) > 0, & G &= g'(0) > 0, \\ C &= 0, & H &= -f'(0) > 0. \end{aligned}$$

Therefore, the characteristic equation (16) of the linearized system, around the trivial steady-state, becomes

$$(\lambda + \mu)(\lambda + k)(\lambda + A - Be^{-\lambda\tau}) = 0.$$

It follows that $\lambda = -\mu < 0$, $\lambda = -k < 0$ or

$$\lambda + A - Be^{-\lambda\tau} = 0. \quad (17)$$

Studying the sign of the real parts of the roots of (17), we obtain the following proposition which deals with the local asymptotic stability of the trivial steady-state of (4).

Proposition 3.1. *Assume that $\mu > 0$ and $k > 0$. If condition (12) holds, then the trivial steady-state of system (4) is locally asymptotically stable for all $\tau \geq 0$, and if condition (11) holds, then it is unstable for all $\tau \geq 0$.*

Proof. First notice that, when $\tau = 0$, $\lambda = B - A$ so $\lambda > 0$ if condition (11) holds and $\lambda < 0$ if condition (12) holds.

Let $\tau > 0$ be fixed. Setting $\nu = \lambda\tau$, the characteristic equation (17) is equivalent to

$$(\nu + A\tau)e^\nu - B\tau = 0.$$

From [8], we know that $\text{Re}(\nu) < 0$ if and only if

$$A\tau > -1, \quad A\tau - B\tau > 0, \quad \text{and} \quad B\tau < \zeta \sin(\zeta) - A\tau \cos(\zeta),$$

where ζ is the unique solution of

$$\zeta = -A\tau \tan(\zeta), \quad \zeta \in (0, \pi).$$

Since $A > 0$ and $\tau > 0$, condition $A\tau > -1$ is satisfied.

If we assume that condition (12) holds, then $A > B$ so $A\tau - B\tau > 0$. By contradiction, suppose that $B\tau > \zeta \sin(\zeta) - A\tau \cos(\zeta)$. Then, from the definition of ζ ,

$$B\tau > -\frac{A\tau}{\cos(\zeta)}.$$

Since $A > B > 0$, it follows that

$$1 > -\frac{1}{\cos(\zeta)}.$$

Consequently, $\cos(\zeta) > 0$ and $\zeta \in (\pi/2, \pi)$. We deduce that $\tan(\zeta) > 0$ so

$$-A\tau \tan(\zeta) < 0 < \zeta.$$

This gives a contradiction. Therefore $B\tau < \zeta \sin(\zeta) - A\tau \cos(\zeta)$, and all roots of (17) have negative real parts. The trivial steady-state is then locally asymptotically stable for all $\tau > 0$.

Assume now that condition (11) holds. Then $A < B$ and $A\tau - B\tau < 0$. Consequently, for all $\tau > 0$, (17) has roots with nonnegative real parts and the trivial steady-state is unstable. \square

The above results indicate that the trivial steady-state of (4) is locally asymptotically stable when it is the only equilibrium and unstable as soon as the nontrivial equilibrium exists. When the transcritical bifurcation occurs, that is when the two steady-states coincide, the trivial steady-state is stable.

We now return to the analysis of the local asymptotic stability of the nontrivial steady-state (Q^*, M^*, E^*) of system (4).

Equation (16) takes the general form

$$P(\lambda, \tau) + Q(\lambda, \tau)e^{-\lambda\tau} = 0 \tag{18}$$

with

$$\begin{aligned} P(\lambda, \tau) &= \lambda^3 + a_1(\tau)\lambda^2 + a_2(\tau)\lambda + a_3(\tau), \\ Q(\lambda, \tau) &= a_4(\tau)\lambda^2 + a_5(\tau)\lambda + a_6(\tau), \end{aligned}$$

where

$$\begin{aligned} a_1(\tau) &= \mu + k + A, & a_4(\tau) &= -B, \\ a_2(\tau) &= \mu k + A(\mu + k), & a_5(\tau) &= -B(\mu + k), \\ a_3(\tau) &= \mu k A - G H C, & a_6(\tau) &= -B\mu k + G H D. \end{aligned}$$

We can check that, for all $\tau \in [0, \tau_{max})$,

$$a_1(\tau) + a_4(\tau) = \mu + k + A - B > 0,$$

$$a_2(\tau) + a_5(\tau) = \mu k + (A - B)(\mu + k) > 0,$$

and

$$a_3(\tau) + a_6(\tau) = \mu k(A - B) + G H(D - C) > 0.$$

We will remember, in the following, that

$$a_i(\tau) + a_{i+3}(\tau) > 0 \quad \text{for } i = 1, 2, 3. \tag{19}$$

Let us examine the case $\tau = 0$. This case is of importance, because it can be necessary that the nontrivial positive steady-state of (4) is stable when $\tau = 0$ to be able to obtain the local stability for all nonnegative values of the delay, or to find a critical value which could destabilize the steady-state (see Theorem 3.2).

When $\tau = 0$, the characteristic equation (18) reduces to

$$\lambda^3 + [a_1(0) + a_4(0)]\lambda^2 + [a_2(0) + a_5(0)]\lambda + a_3(0) + a_6(0) = 0. \quad (20)$$

The Routh-Hurwitz criterion says that all roots of (20) have negative real parts if and only if

$$\begin{aligned} a_1(0) + a_4(0) &> 0, \\ a_3(0) + a_6(0) &> 0, \end{aligned}$$

and

$$[a_1(0) + a_4(0)][a_2(0) + a_5(0)] > a_3(0) + a_6(0). \quad (21)$$

From (19), it follows that all characteristic roots of (20) have negative real parts if and only if (21) holds.

Proposition 3.2. *When $\tau = 0$, the nontrivial steady-state (Q^*, M^*, E^*) of (4) is locally asymptotically stable if and only if*

$$(\mu + k)[\mu k + (A - B)(\mu + k + A - B)] > GH(D - C), \quad (22)$$

where A, B, C, D, G and H are given by (15).

In the following, we investigate the existence of purely imaginary roots $\lambda = i\omega$, $\omega \in \mathbb{R}$, of (18). Equation (18) takes the form of a third degree exponential polynomial in λ . In 2001, Ruan and Wey [20] gave sufficient conditions for the existence of zeros for such an equation, but only in the case where the coefficients of the polynomial functions P and Q do not depend on the delay τ , that is when the characteristic equation (18) is given by $P(\lambda) + Q(\lambda)e^{-\lambda\tau} = 0$. Since all the coefficients of P and Q depend on τ , we cannot apply their results directly. In 2002, however, Beretta and Kuang [4] established a geometrical criterion which gives the existence of purely imaginary roots for a characteristic equation with delay dependent coefficients. We are going to apply this criterion to equation (18) in order to obtain stability results for equation (14). In the following, we use the same notations as in Beretta and Kuang [4] to make things easier for the reader.

We first have to verify the following properties, for all $\tau \in [0, \tau_{max})$:

- (i) $P(0, \tau) + Q(0, \tau) \neq 0$;
- (ii) $P(i\omega, \tau) + Q(i\omega, \tau) \neq 0$;
- (iii) $\limsup \left\{ \left| \frac{Q(\lambda, \tau)}{P(\lambda, \tau)} \right|; |\lambda| \rightarrow \infty, \operatorname{Re} \lambda \geq 0 \right\} < 1$;
- (iv) $F(\omega, \tau) := |P(i\omega, \tau)|^2 - |Q(i\omega, \tau)|^2$ has a finite number of zeros.

Properties (i), (ii) and (iii) can be easily verified. Let $\tau \in [0, \tau_{max})$. Using (19), a simple computation gives

$$P(0, \tau) + Q(0, \tau) = a_3(\tau) + a_6(\tau) > 0.$$

Moreover,

$$\begin{aligned} P(i\omega, \tau) + Q(i\omega, \tau) &= \left[-(a_1(\tau) + a_4(\tau))\omega^2 + a_3(\tau) + a_6(\tau) \right] \\ &\quad + i \left[-\omega^3 + (a_2(\tau) + a_5(\tau))\omega \right], \end{aligned}$$

so (ii) is true. Finally,

$$\left| \frac{Q(\lambda, \tau)}{P(\lambda, \tau)} \right|_{|\lambda| \rightarrow \infty} \sim \left| \frac{a_4(\tau)}{\lambda} \right|,$$

therefore (iii) is also true.

Now, let F be defined as in (iv). Since

$$|P(i\omega, \tau)|^2 = \omega^6 + [a_1^2(\tau) - 2a_2(\tau)] \omega^4 + [a_2^2(\tau) - 2a_1(\tau)a_3(\tau)] \omega^2 + a_3^2(\tau)$$

and

$$|Q(i\omega, \tau)|^2 = a_4^2(\tau) \omega^4 + [a_5^2(\tau) - 2a_4(\tau)a_6(\tau)] \omega^2 + a_6^2(\tau),$$

we have

$$F(\omega, \tau) = \omega^6 + b_1(\tau) \omega^4 + b_2(\tau) \omega^2 + b_3(\tau)$$

with

$$\begin{aligned} b_1(\tau) &= a_1^2(\tau) - 2a_2(\tau) - a_4^2(\tau), \\ b_2(\tau) &= a_2^2(\tau) + 2a_4(\tau)a_6(\tau) - 2a_1(\tau)a_3(\tau) - a_5^2(\tau), \\ b_3(\tau) &= a_3^2(\tau) - a_6^2(\tau). \end{aligned}$$

One can check that

$$b_1(\tau) = \mu^2 + k^2 + A^2 - B^2,$$

and

$$\begin{aligned} b_2(\tau) &= \mu^2 k^2 + (A^2 - B^2)(\mu^2 + k^2) + 2GH [C(\mu + k + A) - BD], \\ b_3(\tau) &= \mu^2 k^2 (A^2 - B^2) + G^2 H^2 (C^2 - D^2) + 2\mu k GH (BD - AC), \end{aligned}$$

where A, B, C, D, G and H are given by (15). It is obvious that property (iv) is satisfied.

Now assume that $\lambda = i\omega$, $\omega \in \mathbb{R}$, is a purely imaginary characteristic root of (18). Separating real and imaginary parts, we can show that (ω, τ) satisfies

$$-a_1(\tau) \omega^2 + a_3(\tau) = -[-a_4(\tau) \omega^2 + a_6(\tau)] \cos(\omega\tau) - a_5(\tau) \omega \sin(\omega\tau), \quad (23)$$

$$-\omega^3 + a_2(\tau) \omega = -a_5(\tau) \omega \cos(\omega\tau) + [-a_4(\tau) \omega^2 + a_6(\tau)] \sin(\omega\tau). \quad (24)$$

One can check that, if (ω, τ) is a solution of system (23)–(24), then $(-\omega, \tau)$ is also a solution of (23)–(24). Hence, if $i\omega$ is a purely imaginary characteristic root of (18), its conjugate has the same property. Consequently, we only look in the following for purely imaginary roots of (18) with positive imaginary part.

System (23)–(24) yields

$$\cos(\omega\tau) = \frac{(a_5 - a_1 a_4) \omega^4 + (a_1 a_6 + a_3 a_4 - a_2 a_5) \omega^2 - a_3 a_6}{a_4^2 \omega^4 + (a_5^2 - 2a_4 a_6) \omega^2 + a_6^2}, \quad (25)$$

$$\sin(\omega\tau) = \frac{a_4 \omega^5 + (a_1 a_5 - a_2 a_4 - a_6) \omega^3 + (a_2 a_6 - a_3 a_5) \omega}{a_4^2 \omega^4 + (a_5^2 - 2a_4 a_6) \omega^2 + a_6^2}, \quad (26)$$

where we deliberately omit the dependence of the a_i on τ .

A necessary condition for this system to have solutions is that the sum of the squares of the right hand side terms equals one. By remarking that system (25)–(26) can be written

$$\cos(\omega\tau) = \operatorname{Im} \left(\frac{P(i\omega, \tau)}{Q(i\omega, \tau)} \right) \quad \text{and} \quad \sin(\omega\tau) = -\operatorname{Re} \left(\frac{P(i\omega, \tau)}{Q(i\omega, \tau)} \right),$$

then this condition is

$$|P(i\omega, \tau)|^2 = |Q(i\omega, \tau)|^2.$$

That is

$$F(\omega, \tau) = 0.$$

The polynomial function F can be written as

$$F(\omega, \tau) = h(\omega^2, \tau),$$

where h is a third degree polynomial, defined by

$$h(z, \tau) := z^3 + b_1(\tau)z^2 + b_2(\tau)z + b_3(\tau). \quad (27)$$

We set

$$\Delta(\tau) = b_1^2(\tau) - 3b_2(\tau), \quad (28)$$

and, when $\Delta(\tau) \geq 0$,

$$z_0(\tau) = \frac{-b_1(\tau) + \sqrt{\Delta(\tau)}}{3}. \quad (29)$$

We then have the following lemma (see [20]).

Lemma 3.1. *Let $\tau \in [0, \tau_{max})$ and $\Delta(\tau)$ and $z_0(\tau)$ be defined by (28) and (29), respectively. Then $h(\cdot, \tau)$, defined in (27), has positive roots if and only if*

$$b_3(\tau) < 0 \quad \text{or} \quad b_3(\tau) \geq 0, \Delta(\tau) \geq 0, z_0(\tau) > 0 \text{ and } h(z_0(\tau), \tau) < 0. \quad (30)$$

Proof. Details of the proof are given in [20], Lemma 2.1. \square

Conditions $\Delta(\tau) \geq 0$, $z_0(\tau) > 0$ and $h(z_0(\tau), \tau) < 0$ cannot be easily checked. In the following lemma we express them using the coefficients b_i , $i = 1, 2, 3$.

Lemma 3.2. *Let $\tau \geq 0$ be such that $b_3(\tau) \geq 0$. Then $\Delta(\tau) \geq 0$, $z_0(\tau) > 0$ and $h(z_0(\tau), \tau) < 0$ if and only if*

$$\begin{aligned} (i) \quad & b_2(\tau) < 0 \quad \text{or} \quad b_1(\tau) < 0 \leq b_2(\tau) < \frac{b_1^2(\tau)}{3}, \text{ and} \\ (ii) \quad & 2\Delta(\tau)z_0(\tau) + b_1(\tau)b_2(\tau) - 9b_3(\tau) > 0. \end{aligned}$$

Proof. Let τ be given such that $b_3(\tau) \geq 0$. We do not mention, in the following, the dependence of the coefficients b_i on τ .

We have

$$\Delta \geq 0 \quad \text{if and only if} \quad b_1^2 \geq 3b_2.$$

If $b_2 < 0$, this result holds true. Otherwise, it is necessary that $b_1^2 \geq 3b_2$. In this latter case, if $b_1 < 0$, then $z_0 > 0$ and, if $b_1 \geq 0$, then $z_0 > 0$ if and only if $b_2 < 0$. Therefore $z_0 > 0$ if and only if

$$b_2 < 0 \quad \text{or} \quad b_1 < 0 \leq b_2 < \frac{b_1^2}{3}. \quad (31)$$

Under the assumption (31), h' , given by

$$h'(z) = 3z^2 + 2b_1z + b_2,$$

has two roots,

$$z_- = -\frac{1}{3}(b_1 + d) \quad \text{and} \quad z_+ = -\frac{1}{3}(b_1 - d)$$

with $z_- < z_+$ and $d = \sqrt{b_1^2 - 3b_2}$ (in fact $z_+ = z_0 > 0$). A simple computation gives

$$h(z_+) = \frac{2}{27}(b_1^3 - d^3) - \frac{b_1 b_2}{3} + b_3.$$

Noticing that

$$b_1^3 - d^3 = (b_1 - d)(2b_1^2 - 3b_2 + b_1 d) = -3z_+(b_1^2 + b_1 d + d^2),$$

we obtain

$$h(z_+) < 0 \quad \Leftrightarrow \quad \frac{2}{3}z_+(b_1^2 + b_1 d + d^2) + b_1 b_2 - 3b_3 > 0.$$

Moreover,

$$b_1^2 + b_1 d + d^2 = d^2 + b_1(b_1 + d) = d^2 - 3b_1 z_-.$$

So

$$h(z_+) < 0 \quad \Leftrightarrow \quad \frac{2}{3}d^2 z_+ - 2b_1 z_+ z_- + b_1 b_2 - 3b_3 > 0.$$

Since $z_+ z_- = b_2/3$, we eventually obtain

$$h(z_+) < 0 \quad \Leftrightarrow \quad 2d^2 z_+ + b_1 b_2 - 9b_3 > 0.$$

This ends the proof. □

From the previous lemma, condition (30) is equivalent to

$$b_3(\tau) < 0 \quad \text{or} \quad b_3(\tau) \geq 0 \text{ and (i)-(ii) hold true.} \quad (32)$$

Let us show on an example that condition (32) is satisfied.

Note that b_3 can be expressed as

$$b_3(\tau) = \mu^2 k^2 (A - B)(A + B) + G^2 H^2 (C - D)(C + D) + 2\mu k G H (B(D - C) + C(B - A)),$$

where A, B, C, D, G and H are defined by (15). Since $C - D < 0$ and $B - A \leq 0$, then $b_3(\tau) < 0$ if $A + B \leq 0$ and $B \leq 0$. Moreover, from the definition of B , it follows that $B \leq 0$ if $A + B \leq 0$. Consequently, a sufficient condition for $b_3(\tau) < 0$ is $A + B \leq 0$.

Let us assume that g is a linear function, given by $g(Q) = GQ$, with $G > 0$, and that $\beta(Q, E) = \beta_1(Q)\beta_2(E)$, with $\beta_1(Q) = 1/(1 + Q^n)$, $n > 0$, and β_2 an increasing function satisfying $\beta_2(0) = 0$. Then, for $\tau = 0$,

$$A + B = [4\beta_1(Q^*) + 3\beta_1'(Q^*)Q^*]\beta_2(E^*).$$

Since $E^* > 0$, $\beta_2(E^*) > 0$ and $A + B \leq 0$ if and only if

$$4\beta_1(Q^*) + 3\beta_1'(Q^*)Q^* = \frac{4 + (4 - 3n)(Q^*)^n}{(1 + (Q^*)^n)^2} \leq 0,$$

that is

$$n > \frac{4}{3} \quad \text{and} \quad Q^* \geq \left(\frac{4}{3n - 4} \right)^{1/n}.$$

Let δ and G be such that

$$\delta + G < \tilde{\beta}(1) = \frac{1}{2}\beta_2 \left(\frac{1}{k} f \left(\frac{G}{\mu} \right) \right),$$

where $\tilde{\beta}$ is defined by (10), and let $\bar{n} > 4/3$ be the unique solution of

$$\frac{3\bar{n}}{3\bar{n}-4} + \ln\left(\frac{4}{3\bar{n}-4}\right) = 0.$$

Then, for $n > \bar{n} \approx 6.12$,

$$\tilde{\beta}\left(\left(\frac{4}{3n-4}\right)^{1/n}\right) > \tilde{\beta}(1) > \delta + G,$$

so $Q^* \geq (4/(3n-4))^{1/n}$ and it follows that $A + B \leq 0$.

Consequently, $b_3(0) < 0$ and, using the continuity of b_3 with respect to τ , we deduce that there exists $\bar{\tau} > 0$ such that (32) is verified for $\tau \in [0, \bar{\tau}]$.

When the reintroduction rate β only depends on the growth factor concentration E , condition (32) is also satisfied for τ close to zero. This is numerically obtained in Section 4.

We set $I := [0, \bar{\tau}]$ an interval in which (32) is satisfied, with $0 < \bar{\tau} \leq \tau_{max}$. From the above remarks, we can find functions β , g and f , and parameters values such that $\bar{\tau}$ exists. For $\tau \in I$ there exists at least $\omega = \omega(\tau) > 0$ such that $F(\omega(\tau), \tau) = 0$.

Then, let $\theta(\tau) \in [0, 2\pi]$ be defined for $\tau \in I$ by

$$\begin{aligned} \cos(\theta(\tau)) &= \frac{(a_5 - a_1a_4)\omega^4 + (a_1a_6 + a_3a_4 - a_2a_5)\omega^2 - a_3a_6}{a_4^2\omega^4 + (a_5^2 - 2a_4a_6)\omega^2 + a_6^2}, \\ \sin(\theta(\tau)) &= \frac{a_4\omega^5 + (a_1a_5 - a_2a_4 - a_6)\omega^3 + (a_2a_6 - a_3a_5)\omega}{a_4^2\omega^4 + (a_5^2 - 2a_4a_6)\omega^2 + a_6^2}, \end{aligned}$$

where $\omega = \omega(\tau)$. Since $F(\omega(\tau), \tau) = 0$ for $\tau \in I$, it follows that θ is well and uniquely defined for all $\tau \in I$.

One can check that $i\omega^*$, with $\omega^* = \omega(\tau^*) > 0$ is a purely imaginary characteristic root of (18) if and only if τ^* is a root of the function S_n , defined by

$$S_n(\tau) = \tau - \frac{\theta(\tau) + 2n\pi}{\omega(\tau)}, \quad \tau \in I, \quad \text{with } n \in \mathbb{N}.$$

The following theorem is due to Beretta and Kuang [4].

Theorem 3.1. *Assume that the function $S_n(\tau)$ has a positive root $\tau^* \in I$ for some $n \in \mathbb{N}$. Then a pair of simple purely imaginary roots $\pm i\omega(\tau^*)$ of (18) exists at $\tau = \tau^*$ and*

$$\text{sign} \left\{ \frac{d\text{Re}(\lambda)}{d\tau} \Big|_{\lambda=i\omega(\tau^*)} \right\} = \text{sign} \left\{ \frac{\partial F}{\partial \omega}(\omega(\tau^*), \tau^*) \right\} \text{sign} \left\{ \frac{dS_n(\tau)}{d\tau} \Big|_{\tau=\tau^*} \right\}. \quad (33)$$

Since

$$\frac{\partial F}{\partial \omega}(\omega, \tau) = 2\omega \frac{\partial h}{\partial z}(\omega^2, \tau),$$

condition (33) is equivalent to

$$\text{sign} \left\{ \frac{d\text{Re}(\lambda)}{d\tau} \Big|_{\lambda=i\omega(\tau^*)} \right\} = \text{sign} \left\{ \frac{\partial h}{\partial z}(\omega^2(\tau^*), \tau^*) \right\} \text{sign} \left\{ \frac{dS_n(\tau)}{d\tau} \Big|_{\tau=\tau^*} \right\}.$$

We can easily observe that $S_n(0) < 0$. Moreover, for all $\tau \in I$, $S_n(\tau) > S_{n+1}(\tau)$, with $n \in \mathbb{N}$. Therefore, if S_0 has no root in I , then the S_n functions have no root in I and, if

the function $S_n(\tau)$ has positive roots $\tau \in I$ for some $n \in \mathbb{N}$, there exists at least one root satisfying

$$\frac{dS_n}{d\tau}(\tau) > 0.$$

Using Proposition 3.2, we can conclude the existence of a Hopf bifurcation as stated in the next theorem.

Theorem 3.2. *Assume that $\mu, k > 0$, condition (11) is satisfied and (22) holds true.*

- (i) *If the function $S_0(\tau)$ has no positive root in I , then the steady-state (Q^*, M^*, E^*) is locally asymptotically stable for all $\tau \geq 0$.*
- (ii) *If the function $S_0(\tau)$ has at least one positive root in I , then there exists $\tau^* \in I$ such that the steady-state (Q^*, M^*, E^*) is locally asymptotically stable for $0 \leq \tau < \tau^*$ and becomes unstable for $\tau \geq \tau^*$, with a Hopf bifurcation occurring when $\tau = \tau^*$, if and only if*

$$\frac{\partial h}{\partial z}(\omega^2(\tau^*), \tau^*) > 0.$$

In the next section, we illustrate the results established in Theorem 3.2. We show, in particular, that our model can exhibit long periods oscillations, compared to the delay, that can be related to experimental observations in patients with periodic hematological diseases.

4 Numerical Illustrations: Long Periods Oscillations

Let us assume that the introduction of resting cells in the proliferating phase is only triggered by the growth factor concentration $E(t)$, that is $\beta = \beta(E(t))$. This assumption is based on hypothesis made by Belair *et al.* [3] for an erythropoiesis model. It describes, for example, the fact that the cell population may only react to external stimuli and cannot be directly sensitive to its own size. We assume that β is given by

$$\beta(E) = \beta_0 \frac{E}{1 + E}, \quad \beta_0 > 0.$$

The functions g and f are defined by

$$g(Q) = GQ \quad \text{with } G > 0,$$

and

$$f(M) = \frac{a}{1 + KM^r}, \quad a, K > 0, r > 1.$$

This latter function often occurs in enzyme kinetics. It has been used by Mackey [9, 10] to describe the rate of introduction in the proliferating phase and by Belair *et al.* [3] to define the feedback from the blood to the growth factor production.

With these choices for the functions β , g and f , our model involves 10 parameters, including the delay τ . Most of the values of these parameters can be found in the literature. This is the case for the stem cells mortality rates in the bone marrow, δ and γ , which are given by Mackey [9] or Pujol-Menjouet and Mackey [18], and for the coefficients of the function f and the disappearance rate k , given by Belair *et al.* [3] and Mahaffy *et al.* [16]. However, it is not so easy to determine values for the other parameters.

Experimental data indicate similar values for μ and G , since blood cells are almost produced at the same rate than they are lost. Then, we will choose

$$\mu = 0.02 \text{ d}^{-1} \quad \text{and} \quad G = 0.04 \text{ d}^{-1}. \quad (34)$$

The coefficient β_0 represents the maximum rate of introduction in the proliferating phase and also the value of $\beta'(0)$. It strongly depends on the nature of the growth factor. Using data about erythropoiesis, we choose

$$\beta_0 = 0.5, \quad (35)$$

which is less than the maximal rate of introduction proposed by Mackey [9], but seems sufficiently large for erythropoiesis modelling.

Other parameters are given by (see [3, 9])

$$\begin{aligned} \delta &= 0.01 \text{ d}^{-1}, \quad \gamma = 0.2 \text{ d}^{-1}, \quad k = 2.8 \text{ d}^{-1}, \\ a &= 6570, \quad K = 0.0382 \quad \text{and} \quad r = 7. \end{aligned} \quad (36)$$

With the above choices for the functions β , g and f , we can explicitly compute the steady-states of system (4), Q^* , M^* and E^* . In particular, one can check that condition (6) holds true. Condition (13) becomes

$$(\delta + G)(a + k) < \beta_0 a \quad \text{and} \quad 0 \leq \tau < \frac{1}{\gamma} \ln \left(\frac{2\beta_0 a}{(\delta + G)(a + k) + \beta_0 a} \right) := \tau_{max}.$$

We set

$$\alpha(\tau) = 2e^{-\gamma\tau} - 1 \quad \text{for } \tau \in [0, \tau_{max}).$$

The function α is positive and decreasing on $[0, \tau_{max})$ and satisfies

$$\frac{(\delta + G)(a + k)}{a\beta_0} < \alpha(\tau) \leq 1 \quad \text{for } \tau \in [0, \tau_{max}).$$

The steady-states of (4) are then defined by

$$\begin{aligned} Q^* &= \frac{\mu}{G} \frac{1}{K^{1/r}} \left(\frac{a\beta_0\alpha(\tau) - (\delta + G)(a + k)}{k(\delta + G)} \right)^{1/r}, \\ M^* &= \frac{G}{\mu} Q^*, \\ E^* &= \frac{\delta + G}{\beta_0\alpha(\tau) - (\delta + G)}. \end{aligned}$$

For $\tau \in [0, \tau_{max})$, Q^* and M^* are decreasing with

$$0 < Q^* \leq \frac{\mu}{G} \frac{1}{K^{1/r}} \left(\frac{a\beta_0 - (\delta + G)(a + k)}{k(\delta + G)} \right)^{1/r}$$

and

$$0 < M^* \leq \frac{1}{K^{1/r}} \left(\frac{a\beta_0 - (\delta + G)(a + k)}{k(\delta + G)} \right)^{1/r},$$

and E^* is increasing with

$$\frac{\delta + G}{\beta_0 - (\delta + G)} \leq E^* < \frac{a}{k}.$$

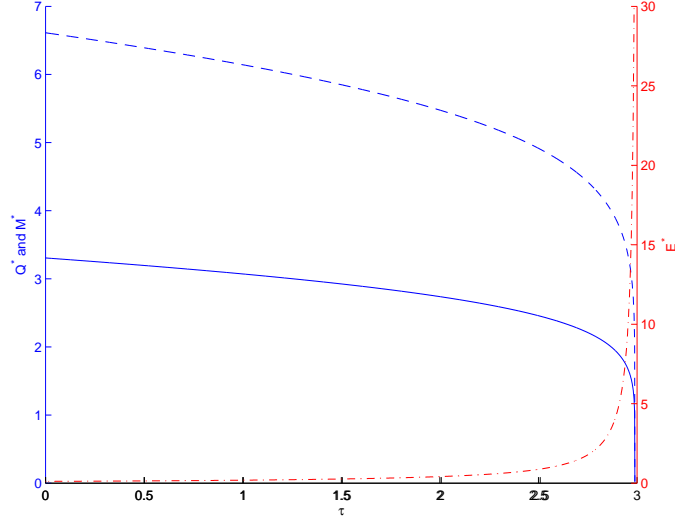


Figure 1: The steady-states Q^* (solid line), M^* (dashed line), and E^* (dotted line) of system (4) are drawn on the interval $[0, \tau_{max})$, with $\tau_{max} = 2.99$, for the parameters values given in (34), (35) and (36). When $\tau = \tau_{max}$, $E^* \approx 2346$ but we have stopped the scale on the vertical axis at 30 to improve the illustration clarity.

For the parameters given in (34), (35) and (36), the steady-states are drawn on the interval $[0, \tau_{max})$ on Figure 1. In this case, $\tau_{max} \approx 2.99$.

The coefficients A , B , C and D , defined in (15), become

$$\begin{aligned} A &= \delta + G + \beta(E^*) > 0, & C &= \beta'(E^*)Q^* > 0, \\ B &= 2e^{-\gamma\tau}\beta(E^*) > 0, & D &= 2e^{-\gamma\tau}\beta'(E^*)Q^* > 0, \end{aligned}$$

and are all strictly positive. The coefficient G is constant and H is still given by $H = -f'(M^*) > 0$. One can also check that E^* is the unique solution of

$$(2e^{-\gamma\tau} - 1)\beta(E^*) = \delta + G.$$

Thus,

$$A = B = (\delta + G)\frac{\alpha(\tau) + 1}{\alpha(\tau)}.$$

In particular, we deduce that

$$\begin{aligned} b_1(\tau) &= \mu^2 + k^2 > 0, \\ b_2(\tau) &= \mu^2k^2 + 2GH[C(\mu + k + A) - AD], \\ b_3(\tau) &= GH(D - C)(2\mu kA - GH(C + D)). \end{aligned}$$

One can notice that b_1 is now independent of the delay τ . Moreover, since $b_1 > 0$, the polynomial function h , defined in (27), has strictly positive roots if and only if (see Lemma 3.1 and Lemma 3.2) $b_3(\tau) < 0$ or $b_3(\tau) \geq 0$, $b_2(\tau) < 0$ and

$$2\Delta(\tau)z_0(\tau) + b_1(\tau)b_2(\tau) - 9b_3(\tau) > 0.$$

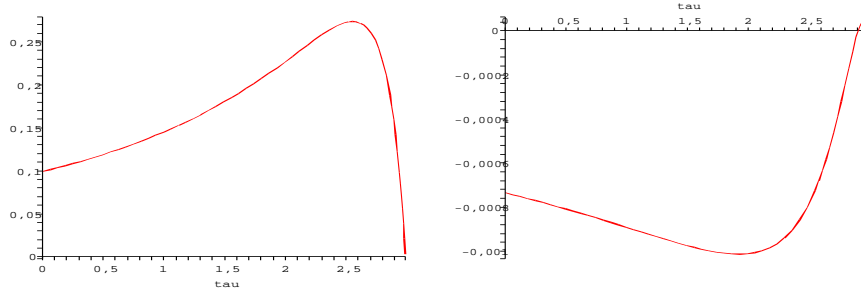


Figure 2: Coefficients $b_2(\tau)$ (left) and $b_3(\tau)$ (right) are represented for $\tau \in [0, \tau_{max})$ with $\tau_{max} = 2.99$.

Using Maple 9, we compute the coefficients b_2 and b_3 for the values in (34), (35) and (36). Results are presented in Figure 2. Since $b_3 < 0$ on $[0, 2.92)$ and b_2 is always positive, h has positive roots if and only if $\tau \in I := [0, 2.92)$. In this case, h has exactly one positive root for $\tau^* \in [0, 2.92)$, denoted by z^* , and, since $h(0, \tau) < 0$, z^* satisfies

$$\frac{\partial h}{\partial z}(z^*, \tau^*) > 0.$$

The function S_0 is drawn for $\tau \in I = [0, 2.92)$ in Figure 3. One can see that there are two critical values of the delay τ for which stability switches occur. In particular, from Theorem 3.2, a Hopf bifurcation occurs when τ is approximately equal to 1.4. Thus, periodic solutions appear.

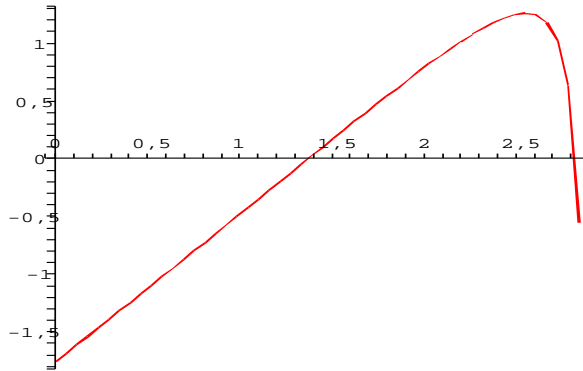


Figure 3: Graph of the function $S_0(\tau)$ for $\tau \in [0, \tau_{max})$ with parameters given by (34), (35) and (36), and $\tau_{max} \approx 2.99$. Two critical values of τ , for which stability switches can occur, appear.

In Figure 4, one can check that S_1 has no positive root on I . Therefore, there exist only two critical values of the delay for which stability switches occur, $\tau = 1.4$ and $\tau = 2.82$.

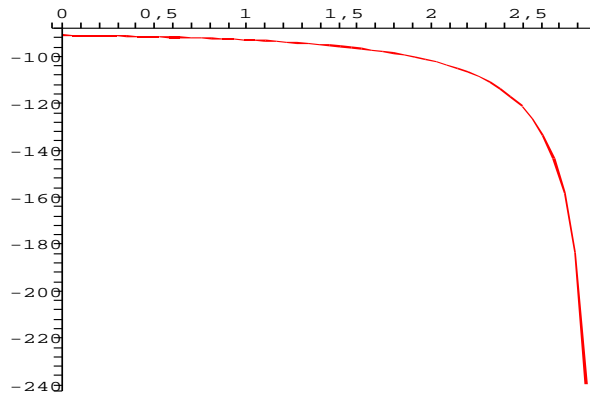


Figure 4: Graph of the function $S_1(\tau)$ for the same values as in Figure 3. The function has no positive root.

Using dde23 [23], a MATLAB solver for delay differential equation, we can compute the solutions of (4) for the above mentioned values of the parameters. Illustrations are showed in Figures 5 to 8.

Before the Hopf bifurcation occurs, solutions are stable and converge to the equilibrium, although they oscillate transiently (see Figure 5). When the bifurcation occurs, periodic solutions appear with periods about 100 days (see Figure 6). These are very long periods compared to the delay τ , which is equal to 1.4 day.

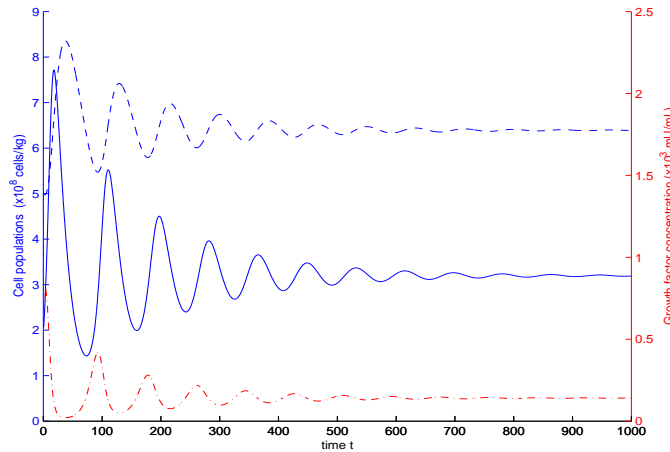


Figure 5: Solutions $Q(t)$ (solid line), $M(t)$ (dashed line) and $E(t)$ (dotted line) of (4) are asymptotically stable and converge to the steady-state values. Damped oscillations can be observed. Parameters values are the same as in Figure 3 with $\tau = 0.5$.

When τ increases, periods of the oscillations increase and just before a stability switch, for $\tau = 2.82$, periods of the oscillations are close to 220 days (see Figure 7). Then, the

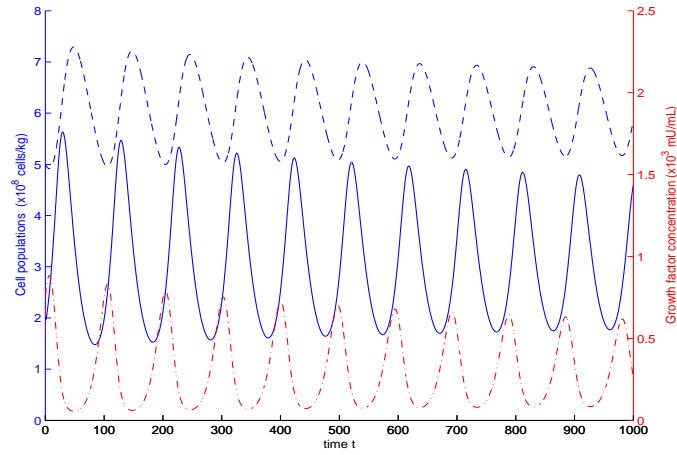


Figure 6: When $\tau = 1.4$, a Hopf bifurcation occurs and periodic solutions appear, with the same period for the three solutions $Q(t)$ (solid line), $M(t)$ (dashed line) and $E(t)$ (dotted line) of (4). Periods are about 100 days. Parameters values are the same as in Figure 3.

steady-state becomes asymptotically stable again and solutions converge to the equilibrium (see Figure 8).

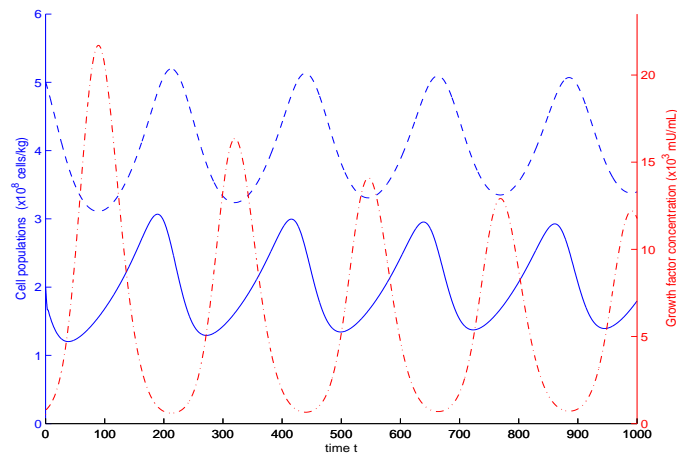


Figure 7: For $\tau = 2.8$, long period oscillations are observed, with periods close to 220 days. Solutions $Q(t)$ (solid line), $M(t)$ (dashed line) and $E(t)$ (dotted line) of (4) are unstable. Parameters values are the same as in Figure 3.

5 Periodic Hematological Diseases

Periodic hematological diseases [7] represent one kind of diseases affecting blood cells. They are characterized by significant oscillations in the number of circulating cells, with periods

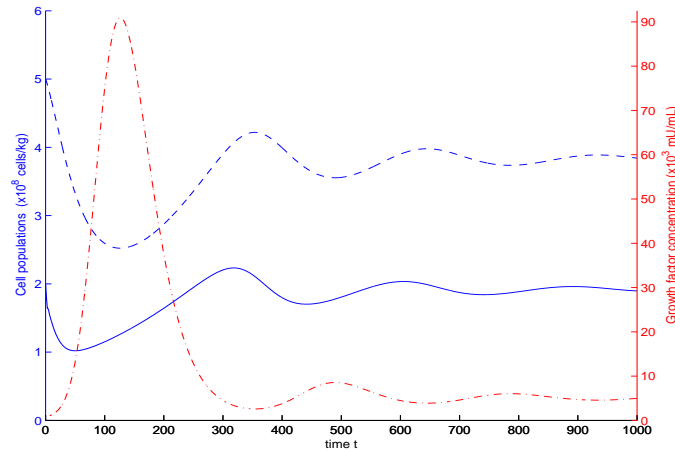


Figure 8: When $\tau = 2.9$, the steady-state is asymptotically stable and solutions $Q(t)$ (solid line), $M(t)$ (dashed line) and $E(t)$ (dotted line) of (4) converge to the equilibrium. Parameters values are the same as in Figure 3.

ranging from weeks (19–21 days for cyclical neutropenia [7]) to months (30 to 100 days for chronic myelogenous leukemia [7]) and amplitudes varying from normal to low levels or normal to high levels, depending on cell types. Because of their dynamic character, periodic hematological diseases offer an opportunity to understand some of the regulating processes involved in the production of hematopoietic cells.

Some periodic hematological diseases involve only one type of blood cells, for example, red blood cells in periodic autoimmune hemolytic anemia [3] or platelets in cyclical thrombocytopenia [22]. In these cases, periods of the oscillations are usually between two and four times the cell cycle duration. However, other periodic hematological diseases, such as cyclical neutropenia [7] or chronic myelogenous leukemia [6], show oscillations in all of the circulating blood cells, i.e., white blood cells, red blood cells and platelets. These diseases involve oscillations with quite long periods (on the order of weeks to months). A destabilization of the pluripotential stem cell population induced by growth factors seems to be at the origin of these diseases.

Recently, Pujo-Menjouet *et al.* [18, 19] and Adimy *et al.* [1, 2] considered models for the regulation of stem cell dynamics and noticed that long periods oscillations could be observed in hematopoiesis models. In this work, we have been able to obtain long period oscillations (about 100 days) for a blood production model mediated by growth factors, as a result of the feedback from blood to growth factors. This result stresses the role of growth factors in the appearance of periodic solutions in hematopoiesis models.

One can notice that by assuming that the cell cycle duration is constant, values of τ for which a nontrivial steady-state exists are limited and cannot be too large. This does not appear in a model with distributed delay, as studied by Adimy *et al.* [1, 2].

Numerical simulations demonstrated that long period oscillations in the circulating cells are possible in our model even with short cell cycle durations. Thus, we are able to characterize some hematological diseases, especially those exhibit a periodic behavior of all the circulating blood cells.

References

- [1] Adimy, M., Crauste, F., Ruan, S., 2005. Stability and Hopf bifurcation in a mathematical model of pluripotent stem cell dynamics, *Nonlinear Analysis: Real World Applications* 6, 651–670.
- [2] Adimy, M., Crauste, F., Ruan, S., 2005. A mathematical study of the hematopoiesis process with applications to chronic myelogenous leukemia, *SIAM J. Appl. Math.* (accepted for publication).
- [3] Bélair, J., Mackey, M. C., Mahaffy, J. M., 1995. Age-structured and two-delay models for erythropoiesis, *Math. Biosci.* 128, 317–346.
- [4] Beretta, E., Kuang, Y., 2002. Geometric stability switch criteria in delay differential systems with delay dependent parameters, *SIAM J. Math. Anal.* 33, 1144–1165.
- [5] Burns, F. J., Tannock, I. F., 1970. On the existence of a G_0 phase in the cell cycle, *Cell. Tissue Kinet.* 19, 321–334.
- [6] Fortin, P., Mackey, M. C., 1999. Periodic chronic myelogenous leukemia: Spectral analysis of blood cell counts and etiological implications, *Brit. J. Haematol.* 104, 336–345.
- [7] Haurie, C., Dale, D. C., Mackey, M. C., 1998. Cyclical neutropenia and other periodic hematological diseases: A review of mechanisms and mathematical models, *Blood* 92, 2629–2640.
- [8] Hayes, N. D., 1950. Roots of the transcendental equation associated with a certain differential difference equation, *J. London Math. Soc.* 25, 226–232.
- [9] Mackey, M. C., 1978. Unified hypothesis of the origin of aplastic anaemia and periodic hematopoiesis, *Blood* 51, 941–956.
- [10] Mackey, M. C., 1979. Dynamic hematological disorders of stem cell origin, in G. Vassileva-Popova and E. V. Jensen (Eds), *Biophysical and Biochemical Information Transfer in Recognition*, Plenum Press, New York, pp. 373–409.
- [11] Mackey, M. C., Rey, A., 1993. Multistability and boundary layer development in a transport equation with retarded arguments, *Can. Appl. Math. Quart.* 1, 1–21.
- [12] Mackey, M. C., Rey, A., 1995. Transitions and kinematics of reaction-convection fronts in a cell population model, *Physica D* 80, 120–139.
- [13] Mackey, M. C., Rey, A., 1995. Propagation of population pulses and fronts in a cell replication problem: non-locality and dependence on the initial function, *Physica D* 86, 373–395.
- [14] Mackey, M. C., Rudnicki, R., 1994. Global stability in a delayed partial differential equation describing cellular replication, *J. Math. Biol.* 33, 89–109.
- [15] Mackey, M. C., Rudnicki, R., 1999. A new criterion for the global stability of simultaneous cell replication and maturation processes, *J. Math. Biol.* 38, 195–219.
- [16] Mahaffy, J. M., Bélair, J., Mackey, M. C., 1998. Hematopoietic model with moving boundary condition and state dependent delay, *J. Theor. Biol.* 190, 135–146.

- [17] Metz, J.A.J., Diekmann, O., 1986. The Dynamics of Physiologically Structured Populations, Lecture Notes in Biomathematics, Vol. 68, Springer-Verlag, Berlin.
- [18] Pujo-Menjouet, L., Mackey, M. C., 2004. Contribution to the study of periodic chronic myelogenous leukemia, *C. R. Biologies* 327, 235–244.
- [19] Pujo-Menjouet, L., Bernard, S., Mackey, M. C., 2005. Long period oscillations in a G_0 model of hematopoietic stem cells, *SIAM J. Appl. Dynam. Syst.* 4, 2, 312–332.
- [20] Ruan, S., Wei, J., 2001. On the zeros of a third degree exponential polynomial with applications to a delayed model for the control of testosterone secretion, *IMA J. Math. Appl. Med. Biol.* 18, 41–52.
- [21] Sachs, L., 1993. The molecular control of hemopoiesis and leukemia, *C. R. Acad. Sci. Paris* 316, 882–891.
- [22] Santillan, M., Bélair, J., Mahaffy, J. M., Mackey, M. C., 2000. Regulation of platelet production: The normal response to perturbation and cyclical platelet disease, *J. Theor. Biol.* 206, 585–603.
- [23] Shampine, L. F., Thompson, S., 2001. Solving DDEs in MATLAB, *Appl. Numer. Math.* 37, 441–458. <http://www.radford.edu/~thompson/webddes/>.