



HAL
open science

Identification in milk of a serum amyloid A peptide chemoattractant for B lymphoblasts.

Berardo de Jesus Rodriguez, Claire Chevaleyre, Gwénaële Henry, Daniel Mollé, Isabelle Virlogeux-Payant, Mustapha Berri, François Boulay, Joëlle Léonil, François Meurens, Henri Salmon

► To cite this version:

Berardo de Jesus Rodriguez, Claire Chevaleyre, Gwénaële Henry, Daniel Mollé, Isabelle Virlogeux-Payant, et al.. Identification in milk of a serum amyloid A peptide chemoattractant for B lymphoblasts.. BMC Immunology, 2009, 10, pp.4. 10.1186/1471-2172-10-4 . hal-00376048

HAL Id: hal-00376048

<https://hal.science/hal-00376048v1>

Submitted on 30 May 2020

HAL is a multi-disciplinary open access archive for the deposit and dissemination of scientific research documents, whether they are published or not. The documents may come from teaching and research institutions in France or abroad, or from public or private research centers.

L'archive ouverte pluridisciplinaire **HAL**, est destinée au dépôt et à la diffusion de documents scientifiques de niveau recherche, publiés ou non, émanant des établissements d'enseignement et de recherche français ou étrangers, des laboratoires publics ou privés.

Research article

Open Access

Identification in milk of a serum amyloid A peptide chemoattractant for B lymphoblasts

Berardo de Jesus Rodriguez^{†1,3}, Claire Chevalyere^{†1}, Gwénaële Henry², Daniel Mollé², Isabelle Virlogeux-Payant¹, Mustapha Berri¹, François Boulay⁴, Joëlle Léonil², François Meurens¹ and Henri Salmon^{*1}

Address: ¹Institut National de la Recherche Agronomique (INRA), UR1282, Infectiologie Animale et Santé Publique, F-37380, Nouzilly (Tours), France, ²UMR Science et Technologie du Lait et de l'Oeuf, INRA-Agrocampus 1253, 65 rue de Saint-Brieuc, 35042 Rennes CEDEX, France, ³Laboratorio de Patologia Animal, Universidad de Antioquia, Medellin, Colombia and ⁴Commissariat à l'Energie Atomique (CEA), DSV, IRTSV, Laboratoire Biochimie et Biophysique des Systèmes Intégrés, Grenoble, F-38054, France. CNRS, UMR 5092, 17 rue des Martyrs, Grenoble F-38054, France. Université Joseph Fourier, Grenoble, F-38000, France

Email: Berardo de Jesus Rodriguez - birido77@yahoo.com; Claire Chevalyere - claire.chevalyere@tours.inra.fr; Gwénaële Henry - gwenaele.henry@rennes.inra.fr; Daniel Mollé - Daniel.Molle@rennes.inra.fr; Isabelle Virlogeux-Payant - Isabelle.Virlogeux@tours.inra.fr; Mustapha Berri - mberri@tours.inra.fr; François Boulay - francois.boulay@cea.fr; Joëlle Léonil - Joelle.Leonil@rennes.inra.fr; François Meurens - meurens@tours.inra.fr; Henri Salmon* - salmon@tours.inra.fr

* Corresponding author †Equal contributors

Published: 23 January 2009

Received: 17 September 2008

BMC Immunology 2009, 10:4 doi:10.1186/1471-2172-10-4

Accepted: 23 January 2009

This article is available from: <http://www.biomedcentral.com/1471-2172/10/4>

© 2009 Rodriguez et al; licensee BioMed Central Ltd.

This is an Open Access article distributed under the terms of the Creative Commons Attribution License (<http://creativecommons.org/licenses/by/2.0>), which permits unrestricted use, distribution, and reproduction in any medium, provided the original work is properly cited.

Abstract

Background: Normal mammary gland contains an extravascular population of B lymphoblasts, precursors of the immunoglobulin plasma cells that play a key role in the passive protection of neonates by secreting immunoglobulins to colostrum and milk. We investigated the presence of chemoattractants in the milk by analysing the chemoattractant activity of various fractions of this secretion. Milk chemoattractants are potentially involved in the recruitment of lymphocytes from the maternal bloodstream in lactating mammary glands.

Results: The dilution-related lymphoid cell chemoattraction of whey was associated with a < 10 kDa ultrafiltrate. Active fractions were purified by reverse-phase high performance liquid chromatography. Two peptides of 2.7 kDa (DMREANYKNSDKYFHARGNYDAA) and 1 kDa (RPPGLPDKY) were identified as fragments of the SAA protein family, tentatively identified as SAA2. Only the 2.7 kDa synthetic peptide displayed chemotactic activity, at two different optimal concentrations. At the lower concentration (3.7 nM), it attracted B-cell lymphoblasts, whereas at the higher (3.7 μM), it attracted B lymphocytes. Then, the SAA mRNA expression was analysed and we observed more SAA transcripts during lactation than gestation.

Conclusion: These data are consistent with the SAA₂₃₋₄₅ fragment being involved in preplasma B-cell recruitment to the mammary gland and resultant benefit to the neonate.

Background

The mammary gland (MG) secretion is essential for the survival of neonatal mammals [1]. This organ is a tertiary

extralymphoid tissue with non-organised lymphoid components [1,2]. Its vasculature and epithelium expand in size during gestation and lactation. In all mammalian spe-

cies, this gland is colonised by T and B lymphocytes [3-6]. T lymphocytes accumulate in the MG during gestation whereas B cells and their plasma cell derivatives progressively accumulate during lactation [3,6-8]. Colostrum and milk immunoglobulins (Igs) are the net result of Ig extravasation from blood and local Ig production by plasma cells [9]. These plasma cells are derived from remote tissue precursors which are induced either in systemic and in mucosal sites, depending on Ig isotype. In single-stomached animals, IgA is secreted by IgA plasmablasts, which originate in the gut [6,8,10-12] whereas IgG is derived from systemic sites [13].

It has been shown that the CC chemokine CCL28 [14-16] plays a major role in IgA plasma cell recruitment. Other factors may also be involved, particularly for other types of plasma cell. Indeed, unidentified factors in milk increase the migration of mouse IgG- and IgA-bearing mucosal lymphocytes [17]. For example, tumour necrosis factor isolated from milk has been shown to increase the migration of lymphocytes [18]. Moreover, other studies have reported that milk contains factors with cell regulatory and stimulatory properties. These factors include hormones and cytokines, which do not have specific effects on any given lymphocyte subset [19]. We have shown that swine whey has chemoattractant activity (CA) for swine lymphocytes [20]. We therefore hypothesized that whey was involved in the local recruitment of plasma cells [6,21]. We tested this hypothesis by fractionating sow milk and assessing the ability of purified fractions to increase lymphocyte or B lymphoblast migration in relation to the stage of development of the healthy mammary gland.

Results

Chemoattractant activity of whey ultrafiltrate

Previous investigations have shown that the removal of fat and casein did not result in the loss of the original CA of skimmed milk (data not shown). We show here that the < 10 kDa ultrafiltrate fraction (UF10) gave a bell-shaped dose-response curve typical of chemoattractants at the same optimal dilution (1/100), and with a similar number of migrating cells (Figure 1A to 1C) to unfiltered whey. On the contrary, the > 10 kDa fraction was inactive (Figure 1A). Lymph node (LN) lymphocytes (Figure 1B and 1C) and B lymphoblasts (Figure 1A) migrated to similar extents. Neutrophils [22] and monocytes (data not shown) purified from the swine blood do not exhibit any CA with fMLP and the < 10 kDa ultrafiltrate fraction. These results combined with morphological data demonstrate that CA activity is restricted to lymphoid cells. As CA was similar for lymphocytes from the mesenteric lymph node (MLN) and the ileal lymph node (ILN), we subsequently evaluated CA principally on B-cell lymphoblasts and MLN lymphocytes.

RP-HPLC fractionation and purification of the milk chemoattractant

In two fractions (F1 and F2) of the first RP-HPLC fractionation of UF10 (Figure 2A-1), CA was recovered at the original dilution (1/100), with B lymphoblasts and MLN lymphocytes, whereas F3 was inactive. After further fractionation, only the F2A and F2B fractions were active (Figure 2A-2) with both B-cell lymphoblasts and lymphocytes at optimal and suboptimal dilutions, whereas the F1A fraction was only active at optimal dilution. We fractionated F2A and F2B further and found that only the F2B1 subfraction was active with both B-cell lymphoblasts and MLN lymphocytes at optimal and suboptimal concentrations, whereas the F2A1 and F2A2 subfractions were not active at suboptimal concentrations. The initial CA of UF10 was recovered mostly in the F2B1 subfraction, which was subjected to a fourth run of RP-HPLC, (Figure 2A-4). CA with both lymphoblasts (Figure 3) and lymphocytes was recovered in the F2B1-A and F2B1-B peaks.

Identification of the chemotactic peptide

The two most chemoattractant peaks, F2B1-A and F2B1-B, were characterised by MS (Table 1). These peaks were found to correspond to five peptides with overlapping sequences. A 3471 Da peptide was found in both the A and B peaks, whereas the 1042 Da peptide was present in peak A but not in peak B. The peptides were sequenced by MS-MS and homology searches of databases (Swissprot) indicated that all sequenced peptides in peaks A and B were derived from the same serum amyloid A protein (SAA), with the exception of an unidentified 3471 Da peptide.

We assessed if these peptides derived from SAA were responsible for the CA of the F2B1 fraction, by testing the CA of the synthetic peptides DMREANYKNSDKYF-HARGNYDAA (Mr 2735) and RPPGLPKY (Mr 1042) separately. These two synthetic peptides eluted with the same retention times as peaks A and B from F2B1 in RP-HPLC (Figure 2A-4) under the same conditions (data not shown). We also showed that F2B1-A induced potent chemotaxis (Figure 2B).

The dilution-effect curve (Figure 3A) showed that CA was recovered with the 2.7 kDa peptide, albeit at 1000 times lower concentrations for lymphoblasts (Figure 3B) than for MLN lymphocytes (Figure 3B), whereas the 1.0 kDa peptide had no activity. Furthermore, there were two peaks of CA with ILN lymphocytes (Figure 3C) at 3.7 μ M and 3.7 nM. At the lower concentration, most of the migrating cells were lymphoblasts, in clusters of 10 to 25 cells. This result is consistent with the effects on L14 B lymphoblasts, which was observed at the same concentration (Figure 3A). At the higher concentration, the 2.7 kDa peptide induced the migration of small ILN lymphocytes,

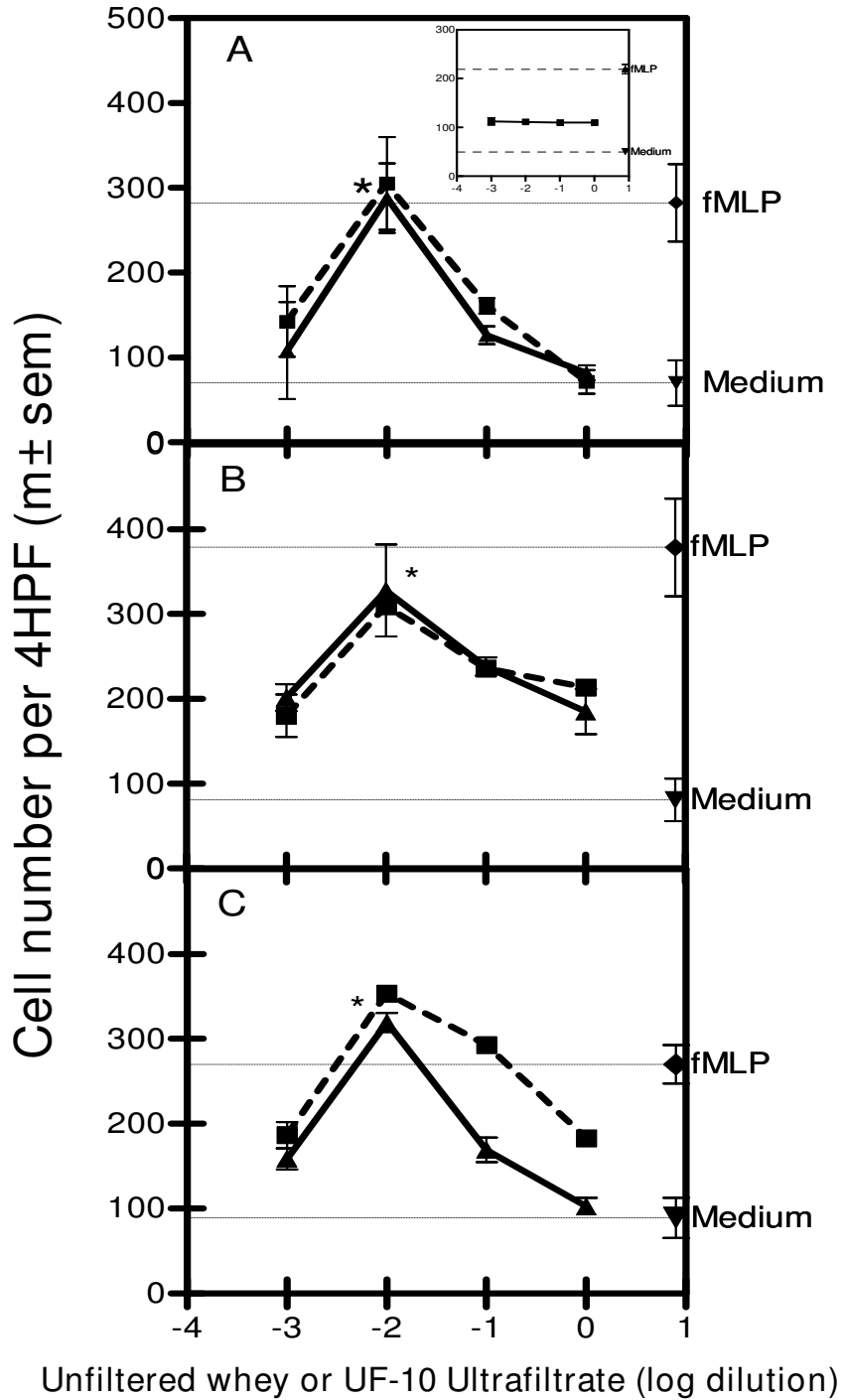


Figure 1

Chemoattractant activity of whey with lymphoid cells, before (▲ - ▲) and after 10 kDa PES membrane ultra-filtration (■ - ■). Swine B-cell lymphoblasts (A), lymphocytes from the MLN (B) and from the ILN (C). Spontaneous and fMLP (10^{-6} M)-induced migrations are indicated by horizontal lines. In the insert: Absence of chemotactic activity of ultra-retentate onto B lymphoblasts. The results are expressed as the mean number of adherent cells per 4 HPF in 3 independent experiments (except with ILN (n = 6)), each performed in triplicate (*p < 0.05 versus spontaneous migration).

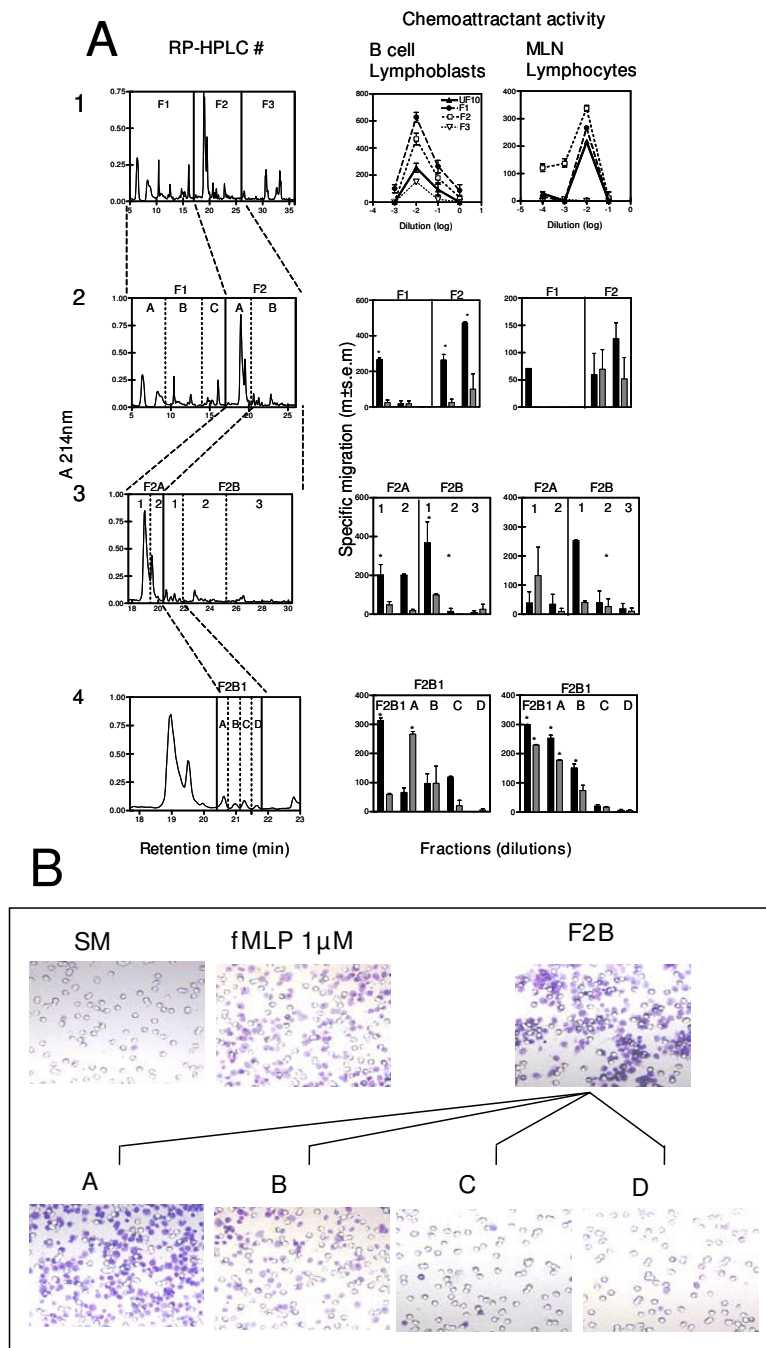


Illustration of B lymphoblasts L14 onto filter (magnitude X100)

Figure 2
Subfractionation of < 10 kDa whey ultrafiltrate by successive RP-HPLC (A, left panel 1 to 4), showing specific chemoattractant activity (A, medium and right panels) with B-cell lymphoblasts and MLN lymphocytes. Each fraction was collected and freeze-dried to remove any residual solvent. Chemoattractant activity was determined at 1/100 (black) and at 1/1000 (shaded) dilutions of the F1 and F2 fractions. The results are the mean number (\pm SEM) of specific migrating cells in independent experiments (* $p < 0.05$ versus spontaneous migration). Lymphoblast migration towards 2B1 fraction and subfractions at a dilution of 1/1000 (B), in the Boyden's chamber assay (Magnitude $\times 100$). F2B1-A fraction and positive control (fMLP) induced potent chemotaxis. Nearly only the pores (8 μ M) in the filter are seen in spontaneous migration (SM) and in F2B1-D fraction.

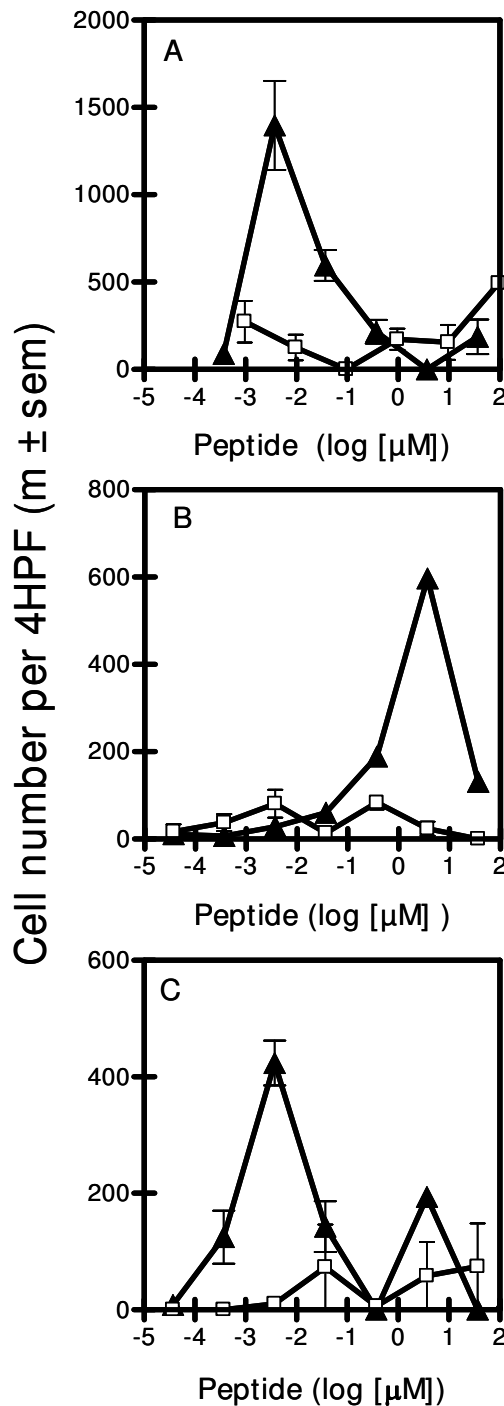


Figure 3
Chemoattractant activity of 1042 Da (□) and 2735 Da (▲) synthetic peptides with B-cell lymphoblasts (3A); lymphocytes from MLN (3B); and from ILN (3C). The results are expressed as the mean number (± SEM) of specific migrating cells per 4 HPF in independent experiments (A, n = 1; B, n = 4; C, n = 2).

consistent with the observed effects on small MLN lymphocytes (Figure 3B).

We investigated whether peptides were chemotactic or chemokinetic, using the checkerboard assay (Table 2) with B lymphoblasts. Maximal migration occurred when higher molar concentrations of the 2.7 kDa peptides were placed in the lower compartment and no significant increase in migration was observed when equal molar concentrations of 2.7 kDa peptides were placed on both sides of the filter, thereby demonstrating that the 2.7 kDa residue peptide was not chemokinetic. The 1 kDa peptide did not display any activity potentially attributable to a chemokinetic or chemotactic response.

Chemoattractant activity with separated CD3+ and slg+ cells from mesenteric lymph node

CD3+ T lymphocytes and slg+ B cells were purified by immunomagnetic positive sorting. The enrichment for CD3 was > 95% and the depletion for slg > 95% (data not shown). The migration of CD3+ T cells in response to UF10 did not differ from spontaneous migration (Figure 4A), whereas the CD3- fraction induced a dose-dependent increase in migration. Conversely, the extent of migration of the purified slg+ B cells (Figure 4B) towards the 2735 Da peptide was higher than that of spontaneous migration, at a concentration of 3.7 μM (p < 0.01), whereas the extent of migration of the slg- fraction did not differ (p > 0.05) from that of spontaneous migration. No increase in migration towards the 1042 Da peptide was (p > 0.05) observed in either slg+ B cells or slg-depleted cells. Consequently, the 2735 Da peptide is chemoattractant for swine slg+ B cells, but not for CD3+ T cells. Furthermore, the peptide was not chemoattractant for purified porcine neutrophils and monocytes (data not shown).

SAA mRNA production in the porcine mammary gland

We then assessed porcine SAA mRNA expression in the MG as a function of developmental stage. MG cDNA was amplified by PCR using primers (F0 and R0) designed into two relatively well conserved SAA regions. A single PCR product, corresponding to an internal fragment of the porcine SAA cDNA, was obtained (Figure 5). Its deduced amino-acid sequence carried the signature of all serum amyloid A proteins: ARGNYD(E)A-K(Q, R)RG-GG-WA. Moreover, this sequence showed a very high percentage of amino acids identical to those of the SAA2 sequences of *Sus scrofa* [GenBank:ABC96790] now available (Figure 6). As a single sequence was amplified by PCR, this "SAA2" is probably the most predominant member of the SAA family expressed in the MG. Production of the porcine SAA mRNA in MG was then assessed, using a second primer pair (F1 and R1) designed on the basis of our porcine SAA cDNA sequence. In porcine MG, SAA mRNA was detectable during gestation, and its level began to

Table 1: Tandem mass spectrometry sequences of A and B peaks peptides of the 2B1 fraction obtained from the < 10 kDa fraction after 4 RP-HPLC runs. ¹ In italic, sequences of synthetic peptides.

AA sequence	Theoretical mass (Da)	Measured mass (Da)
Peak A		
DMREANYKNSDKYFHARGNYDAA ¹	2735.21	2734.55
RPPGLPDKY	1041.56	1041.30
SDMREANYKNSDKYFHARGNYDAA	2822.25	2821.57
Not identified		3470.92
DMREANYKNSDKYFHARGNYDA	2664.18	2663.52
Peak B		
DMREANYKNSDKYFHA	1987.88	1987.82
YSDMREANYKNSDKYFHARGNYDAA	2985.31	2985.27
Not identified		3471.77
DMREANYKNSDKYFHARGNYDAA	2735.21	2735.18
YSDMREANYKNSDKYFHARGNYDA	2914.27	2914.26

increase significantly at day 80 of gestation, reaching a peak at day 15 of lactation (Figure 5). The SAA mRNA expression was higher in the second half of lactation than at any stage of gestation (p < 0.05).

Peptide-induced mobilization of intracellular Ca⁺⁺ in differentiated HL-60 cells and FPRL2-expressing HL-60 cells

Because the 2.7 kDa peptide (DMREANYKNSDKYFHARGNYDAA) exhibits a high degree of amino acid identity with human SAA, which previously has been shown to

bind to and to activate the human N-formyl peptide receptor-like 1 (FPRL1), we tested whether it could activate a FPRL1- or FPRL2-dependent calcium response. FPRL1 is a member of the FPR family that is expressed in human neutrophils and differentiated HL-60 cells as well as monocytes, whereas the N-formyl peptide receptor-like 2 (FPRL2) is expressed in human monocytes but not in neutrophils. When added to differentiated HL-60 cells or undifferentiated FPRL2-expressing HL-60 cells, the 2.7 kDa synthetic peptide (DMREANYKNSDKYFHARGNYDAA) was unable to induce intracellular calcium mobili-

Table 2: Checkerboard assay of lymphoblast migration^a towards 2.7 and 1 kDa peptides.

Concentration of the 2.7 kDa peptide (nM) below the filter	Concentration of the 2.7 kDa peptide (nM) above the filter			
	0	3.7	37	370
0	<u>100.3^b ± 11.2</u>	148.6 ± 14.2 ^c	77.6 ± 1.7 ^c	136.0 ± 9.8 ^c
3.7	224.3 ± 2.0 ^c	<u>132.0 ± 8.0</u>	114.7 ± 0.3 ^c	156.5 ± 7.5
37	228.0 ± 12.7 ^c	125.5 ± 13.5	<u>146.0 ± 11.0</u>	125.0 ± 12.0
370	119.0 ± 8.7	87.6 ± 3.2 ^c	110.5 ± 0.5	<u>74.3 ± 4.1</u>
Concentration of the 1 kDa peptide (nM) below the filter	Concentration of the 1 kDa peptide (nM) above the filter			
	0	3.7	37	370
0	<u>103^b.0 ± 5.2</u>	103.3 ± 16.8 ^c	124.7 ± 8.9	124.6 ± 9.5
3.7	49.0 ± 4.0	<u>70.7 ± 4.2</u>	85 ± 13.3	121.3 ± 39.6
37	64.0 ± 43.1	66.3 ± 8.9	<u>60.7 ± 3.2</u>	147.3 ± 6.8
370	64.3 ± 6.1 ^c	49.0 ± 2.9 ^c	74.7 ± 11.6 ^c	<u>103.3 ± 4.4</u>

^aMigration was assessed with B lymphoblasts after 1 h of incubation in the presence of peptides in the upper, lower or both compartments. For underlined values, there was no gradient of peptide concentration between the upper and the lower compartments. In each column, above the underlined values, the peptide concentrations were lower than in the upper compartment and below the underlined values, the peptide concentrations were higher than in the upper compartment. Results are means ± SEM of migrating cells, for experiments carried out in triplicate. ^bSpontaneous migration in the absence of peptide. ^cSignificant difference between migration in the absence of a gradient (underlined values) and peptide-induced migration (p < 0.05 by Student's t test). A polycarbonate filter with 12 µm pores separated the two compartments of the chamber.

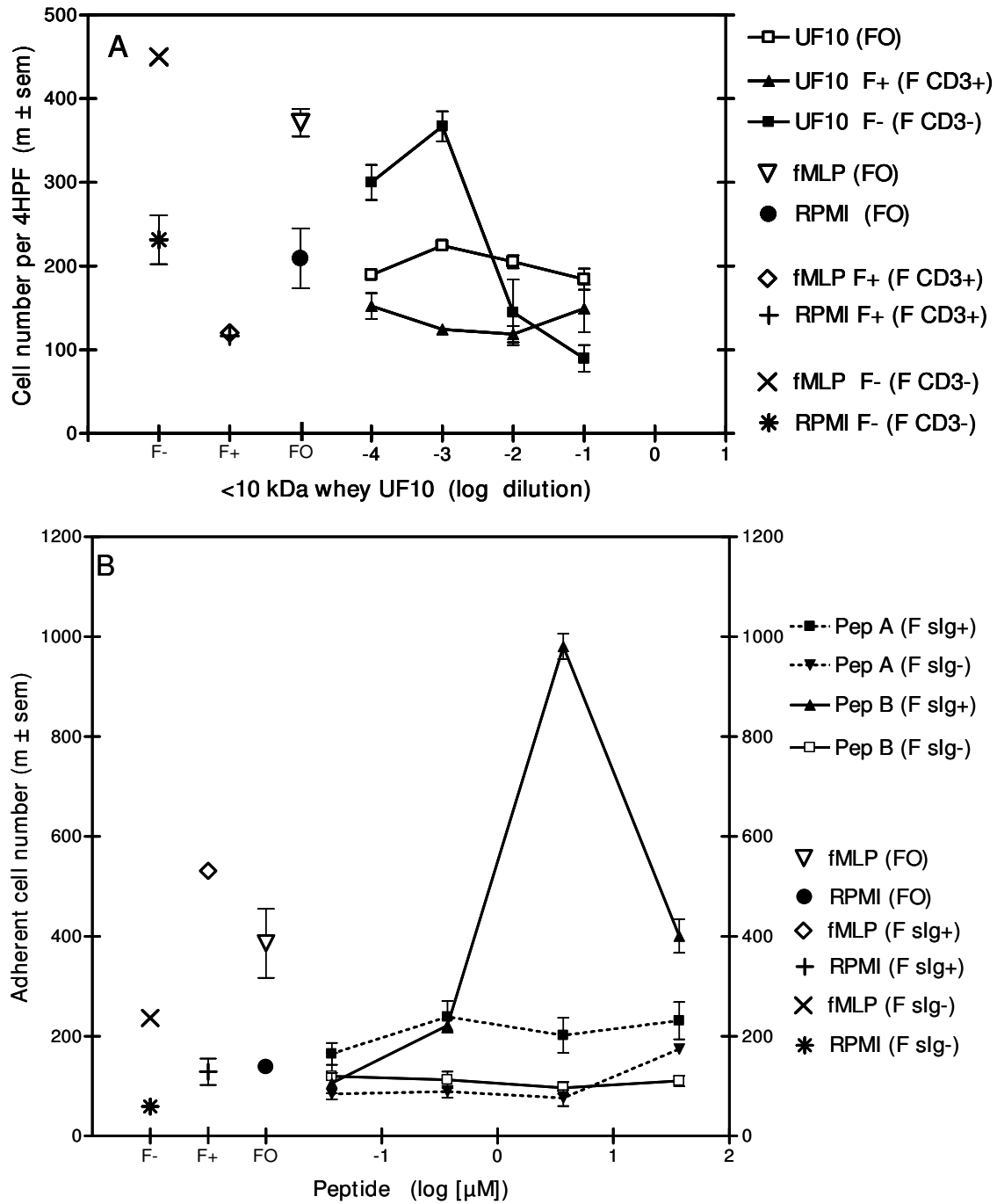


Figure 4
Chemoattractant activity of < 10 kDa fraction (A) and of synthetic peptides (B) with MLN lymphocytes enriched in CD3 or depleted in Slg+ B cells (at a concentration of 3.7 μM). **A)** CD3+ (F+), CD3- (F-) and origin cell (FO) fractions with the < 10 kDa fraction of whey (UF10) and corresponding spontaneous migration (fMLP 10⁻⁶ M) and RPMI controls with FO, F+ and F-). **B)** Chemoattractant activity of 1042 Da (PepA) or 2735 Da (PepB) synthetic peptide with the Slg+ B cell-enriched fraction (F slg+) and chemoattractant activity of the same 1042 Da (PepA) and 2735 Da (PepB) peptides with the fraction depleted of Slg+ B cells (F slg-). Corresponding spontaneous migration (fMLP 10⁻⁶ M and RPMI controls). Results are the mean number of adherent cells ± SEM per 4 high-power fields (HPF).

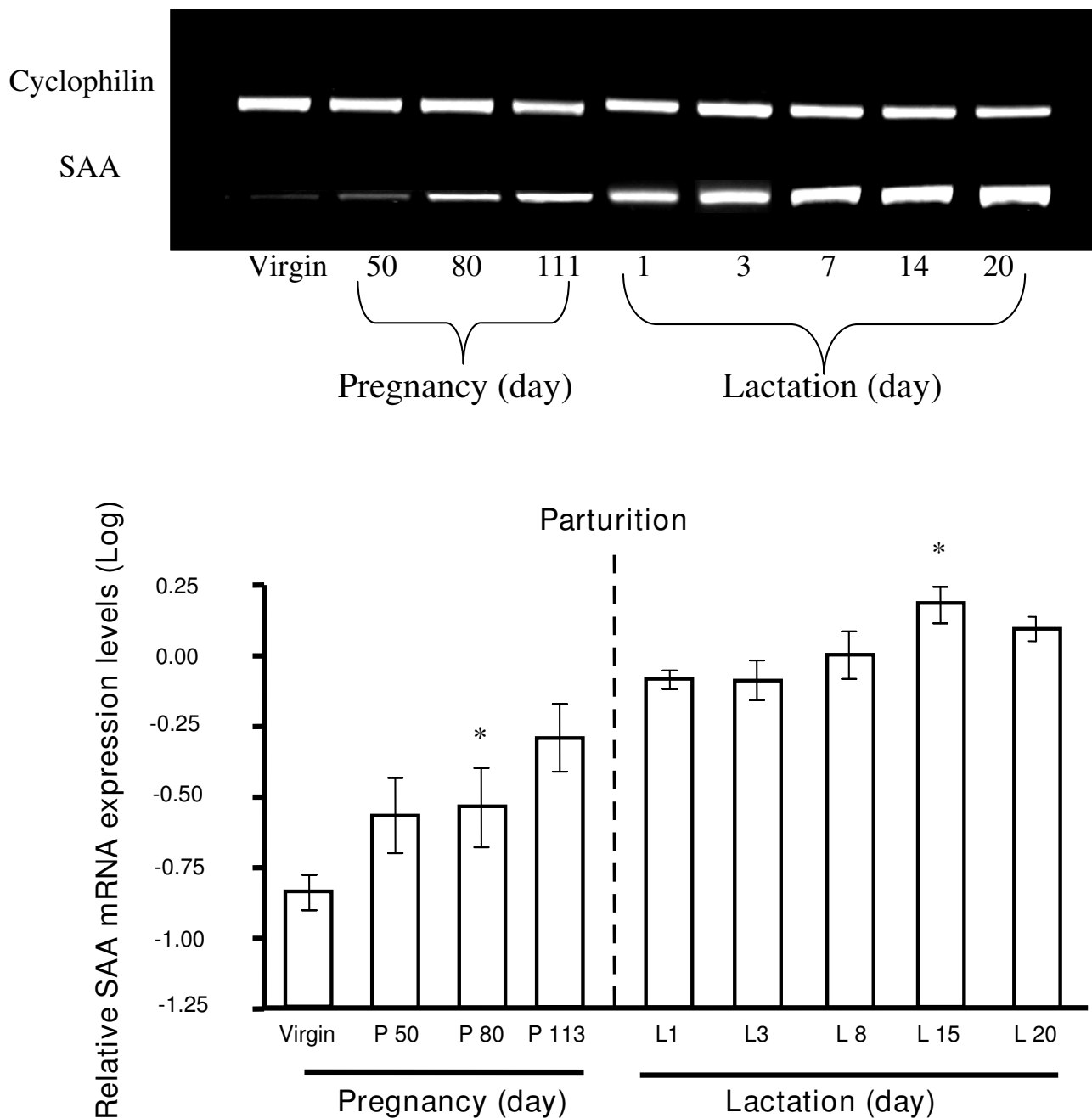


Figure 5
Expression of SAA in the mammary gland during gestation and lactation, as determined by semi-quantitative reverse transcription-polymerase chain reaction (RT-PCR). Upper panel: Profiles of bands obtained for SAA and cyclophilin in porcine MG. Lower panel: Kinetics of SAA mRNA production from the virgin state through gestation and lactation in porcine MG. The relative signal intensities were obtained by normalization with respect to the cyclophilin signal (mean \pm SEM of 2–3 animals). (*) Levels of SAA mRNA did not vary during gestation or lactation, until day-80 of gestation, after which they increased significantly, reaching a peak on day 15 of lactation L15: $p < 0.05$ in Student's *t* tests.

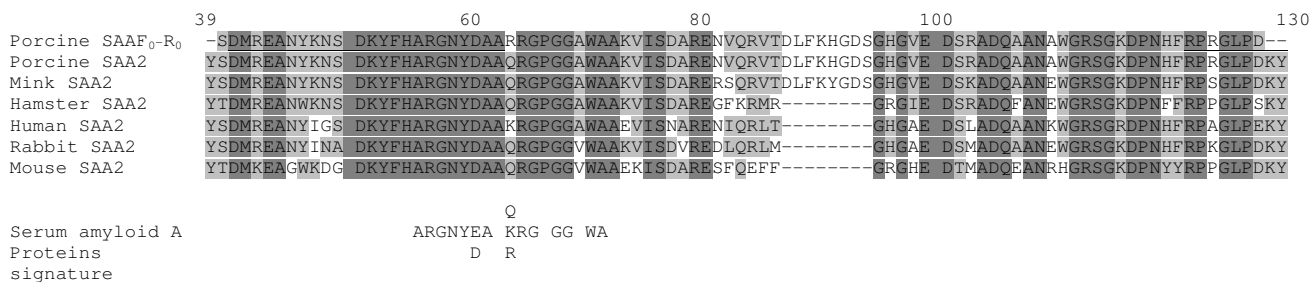


Figure 6
Comparison of the SAA sequence recovered from the porcine mammary gland (Porcine SAAF0-R0) with sequences of SAA2 isoforms. Sequences were obtained from the NCBI website <http://www.ncbi.nlm.nih.gov/entrez/query.fcgi?db=Protein>, for swine (ABC96790), mink (P02739), hamster (P20727), human (AAH20795), rabbit (P22000) and mouse (AAH24606). Amino-acid position is indicated at the top of the figure and corresponds to the amino-acid number in the Porcine SAA2 sequence (ABC96790). Identical and conservative residues are highlighted in dark and light grey, respectively. Gaps are denoted by a dash. The sequences of the peptides obtained from whey and synthesised in this study are underlined.

zation. In contrast, recombinant human ApoSAA, an agonist specific of FPRL1, or WKYMVm, an agonist of FPRL2, triggered a robust calcium response in differentiated HL-60 cells or undifferentiated FPRL2-expressing cells, respectively. This observation indicates that the absence of response with B cells could not be due to a lack of expression of FPRL1 (Figure 7A) or FPRL2 (Figure 7B).

Discussion

In this study, most of the CA of milk for B lymphocytes and B lymphoblasts was detected with the 2735 Da peptide isolated from the whey while no CA activity was detected in the 1042 Da peptide from the same fraction. CA activity was not detected for neutrophils and monocytes, either onto filter or with purified blood cells. Amino-acid sequencing of the two peptides showed that they belonged to the SAA protein family [23]. The partial sequence of the SAA cDNA amplified from the MG suggested that these peptides might be derived from SAA2, as the DNA sequence obtained was 98% identical to that of porcine SAA2 [24]. However, we cannot draw definitive conclusions concerning the SAA subtype corresponding to the 2.7 kDa chemoattractant peptide, as this peptide displayed a high degree of identity (> 90%) with SAA subtypes from different origins. Our data suggesting that SAA2 predominates in the MG, are reminiscent of the finding that bovine mammary-SAA or SAA3 differs from serum-AA in being present at extrahepatic sites, such as the gut epithelium, MG epithelium [25] and in colostrum and milk in healthy animals [26]. However, human breast was found to contain SAA1, SAA2 and SAA4, indicating that there is considerable variation amongst species, despite the sequence similarities. In swine SAA2, there is no deletion of the 8 aa (number 88 to 95) of the human sequence required for acute inflammation reaction [27]. This observation provides further evidence that this pep-

tide could play a physiological role in normal MG. The catabolic pathway of SAA has yet to be completely defined, but various studies have suggested that SAA is degraded by cell-associated elastase-like proteases [28,29] and several other serine proteases found in serum and milk, including kallikrein and plasmin [30-32]. The proteolysis of SAA by these enzymes leads to the generation of specific peptide fragments, some corresponding to amino acids 29 to 42 of SAA sequence, whereas the chemoattractant peptide is longer (23-45) and has different cleavage sites. The specific action of the mammary SAA peptide on B lymphoid cells contrasts with the previously described activity of SAA. Indeed human SAA is described as involved in adhesion induction, migration, and tissue infiltration of T lymphocytes [33]. The 2.7 kDa peptide (DMREANYKNSDKYFHARGNYDAA) is 92.3% identical to the 29-42 peptide of hSAA-A (YIGSDKYFHARGNY) [34], suggesting a similar function. However, only a few studies have used synthetic peptides: One study reported that hSAA₂₉₋₄₂ inhibited adhesion [34], whereas another found no inhibitory effect on neutrophil migration [35].

It has been shown that hSAA and the 29-42 fragment display agonist activity involving FPRL1 receptor [36,37]. Moreover, fMLP receptor has not only been described on human neutrophils and NK cells but also on B cells [38,39]. As in our study, the fact that B cells respond to μmolar concentrations suggest that they exhibit FPRL1 or FPRL2 receptors. However, we may exclude FPRL2 as this receptor does not bind or respond to N-formyl peptides [38]. On the other hand, swine L14 B cells incubated with human apoSAA or swine 2.7 kDa peptide failed to exhibit any calcium flux. These results indicate that the peptide probably uses a receptor other than FPRL1 and FPRL2. This receptor could be the recently described "receptor independent of FPRL1 [40], which did not lead to a cal-

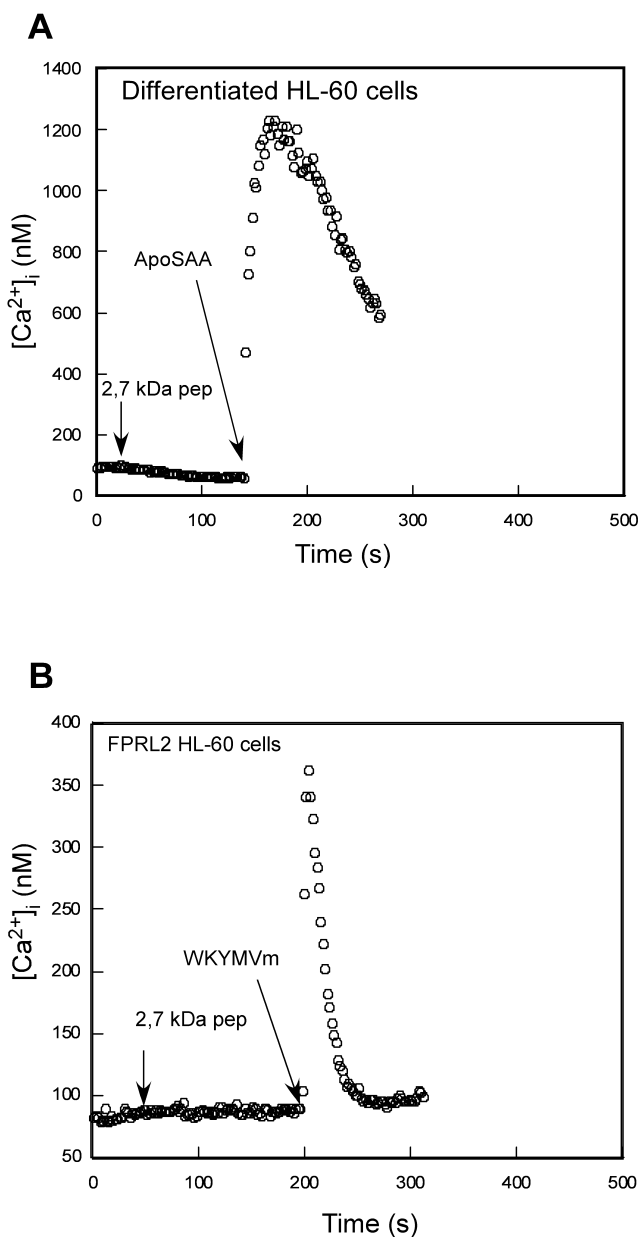


Figure 7
Calcium mobilization in myeloid cells expressing FPR, FPRL1 or FPRL2. Differentiated HL-60 cells and undifferentiated FPRL2-expressing HL-60 cells were loaded with 2 μM Fura-2 and analyzed with respect to calcium mobilization mediated by the addition of peptides. **(A)** Addition of the 2,7 kDa fragment from SAA2 (1 μM) to differentiated HL-60 cells was unable to mobilize intracellular calcium whereas 100 nM of recombinant of human ApoSAA, an agonist of FPRL1, induced a robust calcium rise **(B)** Undifferentiated HL-60 cells that stably express FPRL2 were unable to mobilize intracellular calcium in response to the addition of 1 μM of the 2,7 kDa fragment from SAA2 whereas a calcium rise was observed upon addition of 100 nM of WKYMVm, an agonist of FPRL2.

cium influx. Furthermore, this receptor could be present in two similar forms: One of lower avidity on B cells and the other of higher avidity or subject to up-regulation after the activation of B cells or B lymphoblasts. Alternatively, these results could fit with the observation that B lymphocytes can respond without mobilization of intracellular calcium as observed, for example, with chemokines CCL19, CCL21, CXCL12 and CXCL13 [41]. The lack of CA of the terminal SAA peptide (RPPGLPDKY) with B cells does not entirely rule out activity with these cells. Indeed, the truncated form of hSAA, AGLPDKY (SAA₉₈₋₁₀₄), and analogues are known to bind human CD4+ T lymphocytes and to stimulate them to produce interferon-γ. It is also possible that the 98–104 peptide makes the cells susceptible to the 29–42 fragment chemoattraction after activation.

Binding may also lead to the induction of cellular responses, such as cytokine secretion [42] and the up-regulation of integrin α4β1, in particular. α4β1 expression increases the probability of *in vivo* binding to VCAM-1 [43], a vascular addressin present on the MG blood vessels [6]. The lymphocyte aggregation observed in the present study (Figure 2B) would be consistent with the expected effect of such binding.

The YIGSD laminin-like element of hSAA is replaced by the YKNSD element in pSAA, and both hSAA and pSAA express RGN motif, a "RGD like" motif. This RGN motif [34] represents integrin-binding and cell attachment motifs derived from cellular adhesion protein molecules, such as fibronectin, collagen, vitronectin, fibrinogen, laminin and many microbial proteins, including the Tat protein of the human immunodeficiency virus [44,45]. Binding of the RGN motif to the cell membrane is known to stimulate membrane integrins, leading to a local increase in the concentrations of F-actin and α-actinin, resulting in cell locomotion [46]. It is possible that the peptide adheres to the filter via this RGN motif, inducing lymphocyte migration. Transposed *in vivo*, these data suggest a similar phenomenon, in which the binding of SAA to the surface of the mammary endothelial cells may induce B-cell adhesion followed by the transendothelial migration of these cells in an SAA-peptide gradient. Finally, in addition to binding to endothelial cells, SAA also binds to the basal membrane and extracellular matrix, probably due to its heparin-binding properties [47]. Thus, gradients of extracellular tissue-bound SAA or SAA peptides, including the 2.7 kDa peptide, may induce haptotactic B-cell migration in the mammary tissue during lactation.

SAA mRNA and protein productions have been recently demonstrated in extrahepatic tissues, and specifically in MG, mostly in epithelial and endothelial cells [25], sup-

porting the hypothesis of a role in lymphocyte recruitment. High extrahepatic expressions and the secretion of the mammary-associated serum amyloid A 3 isoform (M-SAA3) in the colostrum and milk of healthy animals has been reported [26]. Although the functional significance of extrahepatic SAA production remains unclear, it has been suggested that the apparent constitutive production of the SAA transcript in non-hepatic cell lines is consistent with a housekeeping role for the protein [48], either as a first line of defence or in the maintenance of tissue function.

Previous findings of the upregulation of SAA gene expression in response to prolactin [49] and the increase in B lymphoblast numbers in the MG during lactation [6,21] would together be consistent with the results of the present study. The human MG produces and releases bioactive prolactin *in situ* [50]. In this study, we showed that porcine SAA mRNA production increased during lactation, consistent with the hormonal regulation of SAA production mediated by an increase in prolactin concentration at this stage of MG development. This milk peptide, due to its small size, could cross the neonatal gut epithelium and stimulate the neonatal gut immune response by enhancing the recruitment of mucosal gut B lymphoblasts.

Conclusion

In the current paper, we have investigated whether physiological chemoattractants induced the recruitment of immune cells from the maternal bloodstream in lactating mammary glands, by analysing the chemoattractant activity of various milk fractions. The B cell chemoattractant activity of a SAA 2.7 kDa peptide and the concomitant upregulation of SAA mRNA during lactation are consistent with the SAA₂₃₋₄₅ fragment being involved in preplasma B-cell recruitment to the mammary gland, potentially influencing Ig concentrations, conferring active and passive protection on neonates and providing local protection for the mammary gland.

Methods

Cell isolation and culture

Cryopreserved cells from the swine L14 lymphoblastoid cell line (ECACC number 91012317) [51] were cultured and harvested in the exponential growth phase, as previously described [20,52]. L14 cells is a permanent swine lymphoblastoid cell line which has been cloned and confirmed to be of B cell lineage [51-54]. In contrast to monocytes, neutrophils, T cells, NK cells and null cells the L14 cells are sWC1- as the B cells [55]. In addition they are Ig light-chain λ + (46%), IgM+ (37.5% to 82%), IgA-, IgG-, cytoplasmic light-chain+ (10%), cytoplasmic IgM+ (7%), Ig CD1- [51], CD5- (B2 lymphocytes), CD45+, CD45RA+ (Naïves, 40%), CD45RC+ (35 to 80%), CD29+ (β 1, 50%

to 80%), CD62L+ (15%), CD11b-, CD11c-, Fc gamma-, CD40+ (100%, responsible of isotopic commutation), CD79b+ (pre-B-cells and mature-B-cells, 40%), CD18-, CD21-, CD49d-, CD49e+ (100%), α 4 β 7-, class II+ (DR and DQ, 99%). Furthermore, L14 B cells are chemoattracted by CCL28 and expressed the corresponding receptor, CCR10 [13].

Lymphocytes were isolated from mini-pig (SLA^{d/d}) MLN and ILN and cryopreserved as previously described [56]. Immediately before the test, the cells were cultured overnight at 37°C in a six-well tissue culture plate (Costar, Bethesda, MD, USA), in the presence of 5% CO₂, at a density of 10⁶ cells/ml, in RPMI 1640 (Gibco, Cergy-Pontoise, France) supplemented with 2 mM L-glutamine (Sigma-Aldrich, Saint-Quentin, France), 1 mM pyruvate (Sigma-Aldrich, Saint-Quentin, France), and 50 μ M β -mercaptoethanol (Sigma-Aldrich, Saint-Quentin, France), to obtain cells with a membrane integrity > 95%, as determined by Trypan blue exclusion. At the end of the incubation period, both plastic-adherent and non-adherent cells were collected. The dead cells were eliminated by gradient centrifugation ($d = 1.09$) and the viable cells were suspended in RPMI 1640 medium (Gibco, Cergy-Pontoise, France) without foetal bovine serum for chemoattractant assays.

Magnetic cell sorting of CD3+ and slg+ B lymphocytes

We resuspended 200 \times 10⁶ MLN lymphocytes in PBS without Ca²⁺ or Mg²⁺, and incubated them with swine serum for 5 min at room temperature to block the Fc receptors. They were then washed twice in PBS without Ca²⁺ and Mg²⁺. Cells were incubated on a shaker for 30 min at 4°C with monoclonal mouse anti-CD3 (BB238 E6) or anti-swine Ig λ light chain antibody [57]. We then added 200 μ l of anti-mouse immunoglobulin magnetic microbeads (Miltenyl Biotec, Auburn, CA, USA) to 10⁸ cells in 800 μ l of buffer and the mixture was incubated on a shaker for 30 min at 4°C. The cells were then washed twice with PBS without Ca²⁺ or Mg²⁺ and resuspended in 500 μ l of the same buffer. The cells and beads were loaded onto columns (LST, Miltenyl Biotec, Auburn, CA, USA), which were placed on a MidiMACS separator. The cells not bound to the magnetic beads flowed through readily. The columns were washed with MACS medium (PBS without Ca²⁺ or Mg²⁺ supplemented with 1 mg/ml bovine serum albumin and 2 mM EDTA). Then, the columns were removed from the separation unit and filled with MACS media. A plunger was inserted into the columns to flush out the CD3+ T cells or Ig light chain-positive cells. The purity of the positive and negative cells was assessed by FACS analysis.

Flow cytometry analysis

Cell suspensions in V-bottomed microtitre plates were immunostained as follow: 5×10^5 cells per well were washed with 200 μ l flow cytometry medium (FCM, 1% BSA and 0.1% sodium azide in PBS) and incubated with 50 μ l goat serum for 5 min at room temperature, to block non-specific binding. Cells were washed three times in FCM and incubated for 30 min with 50 μ l of mouse anti-CD3 antibody or mouse anti-swine Ig λ light chain antibody with gentle stirring at 4°C in the dark. Then, they were washed and incubated with 50 μ l of goat anti-mouse IgG RPE (DAKO R 0480, Glostrup, Denmark). Finally, cells were resuspended in 100 μ l FCM and analysed on a Becton-Dickinson FACScan [58,59].

Chemotaxis assay

Cell chemoattraction was measured in 48-well microtaxis chambers (Neuroprobe, Cabin John, MD, USA) as previously described [56]. Briefly, the lower compartment was filled with 28 μ l of chemoattractant solution, using fMLP 10^{-6} M (Sigma-Aldrich F-3506, lot 48f5805, Saint-Quentin, France) as the positive and medium only (RPMI 1640 without FCS) as the negative control. It has been shown previously that fMLP is not chemoattractant in swine for neutrophils [22] but for lymphocytes [56]. Moreover, in human, fMLP chemoattracted specifically B cells but not T lymphocytes [60] and recently its receptor has been found onto B cells and NK cells [39]. We then transferred 48 μ l of cell suspension at a density of 4×10^6 cells/ml to the upper compartment and 25 μ l of medium with or without CA were placed in the lower compartment. The upper and lower compartments were separated by a polycarbonate PVP-free membrane with 8 μ m or 12 μ m pores for lymphocytes and lymphoblasts, respectively. Chambers were incubated for 1 h at 37°C and the filter was then removed and stained with haematoxylin [56]. Migration was assessed by counting the number of lymphocytes that had migrated through the pores and adhered to the lower surface of the filter in four randomly chosen high-power fields, using a 40 \times oil objective and a 10 \times eyepiece with a Sony 3CCD colour video camera (Sony, Olympus, Japan) and AnalySIS software (Soft Imaging System, Olympus, Japan). All samples were tested in triplicate. Specific migration was evaluated in some experiments.

We investigated whether synthetic peptides of SAA were chemokinetic (enhanced random migration) or chemotactic (directed migration) by carrying out a checkerboard assay as previously described [61].

Milk sampling

Milk was obtained five days into lactation, from healthy control animals at the INRA farm (St Gilles, France). No evidence of clinical mastitis was found at the time of sample collection or during the two-month follow-up period.

The milk was skimmed by centrifugation at 2000 g for 15 min at 4°C and caseins were removed by ultracentrifugation at 85000 g for 1 h at 4°C. The separated fat, whey and casein fractions were stored at -20°C until further analysis. Our previous data show that these processes do not result in the loss of the original CA of the skimmed milk.

Ultrafiltration of whey

Whey proteins were subjected to ultrafiltration through centrifugal concentrators (Vivaspin 20, Sartorius AG, Goettingen, Germany) at 3000 g and at room temperature, using a 30 kDa polyethersulfone membrane (UF30) and then a 10 kDa polyethersulfone (UF10) membrane. The ultrafiltrates obtained by separation with membranes of different thresholds were reconstituted to their initial volume with PBS and tested for CA. Salts and milk sugars were eliminated by solid-phase extraction (SPE) with a C18 grafted silica phase. The retained molecules were washed with 0.1% TFA to remove salts and milk sugar and then eluted from the silica with an aqueous acetonitrile solution (80%), and freeze-dried.

Fractionation of ultrafiltrate

Ultrafiltrate UF10 was fractionated by semi-preparative RP-HPLC on a Vydac C18 column (218TP510, 150 \times 10 mm I.D). The column was equilibrated in 100% solvent A (1.06‰ TFA in milliQ water). Ultrafiltrate UF10 (500 μ l) was injected and after 5 min at 5 ml/min in isocratic mode, elution was carried out with a linear gradient increasing to 70% solvent B (1.0‰ TFA in 80% aqueous acetonitrile) over 40 min. The column temperature was 40°C and elution was monitored at 214 nm. A sequential subfractionation of UF10 (Figure 2A) was carried out to isolate the chemoattractant factor, and we focused on the most chemoattractant fraction at each step. All fractions were freeze-dried and then resuspended in the same volume of RPMI as of sample initially injected in RP-HPLC, for CA evaluation. Three fractions (F1, F2 and F3) were initially obtained. The F1 and F2 fractions were further subdivided, by injection of a second aliquot of UF10, leading to harvesting of the F1A, F1B, F1C, F2A and F2B subfractions. As CA was highest in the F2A and F2B fractions, these fractions were further subfractionated to give F2A1, F2A2, F2B1, F2B2 and F2B3. In the last step of RP-HPLC purification, the F2B1 fraction was further fractionated to give F2B1- A, B, C and D.

Mass spectrometry and tandem mass spectrometry analysis of chemoattractant factor

Mass spectrometry measurements were performed at the research support facility "Plant Biopolymers – Interactions – Structural Biology", INRA, at Nantes. Mass data analyses were conducted on a hybrid quadrupole orthogonal acceleration time-of-flight mass spectrometer (Q-

TOF Global, Waters, Guyancourt, France) equipped with a nano-flow ESI interface.

For mass analyses, samples were dissolved in 8 μ l of a water:acetonitrile:formic acid mixture (49.5:49.5:1, v/v). Approximately 1 μ l of sample was introduced into a nano-ESI precoated borosilicate capillary (MDS Proteomics Inc., Odense, Denmark) and infused into the ion source at a flow rate of about 50 nl/min. MS and MS/MS measurements were carried out under the control of Mass Lynx software (Waters, Guyancourt, France).

Synthetic peptides

Two peptides were synthesized at Neosystem SA (Neosystem SA, Strasbourg, France), with the amino-acid sequences RPPGLPDKY (Mr 1041.56 Da) and DMREAN-YKNSDKYFHARGNYDAA (Mr 2735.21 Da). Purity exceeded 98%, as determined by high performance liquid chromatography (Neosystem SA, Strasbourg, France).

RNA extraction and DNase treatment

Samples of porcine MG tissue (0.1–0.2 g) were collected into 1 ml Trizol (Invitrogen, Cergy Pontoise, France) in polypropylene tubes and total RNA was extracted according to the manufacturer's recommendations. After isopropanol precipitation, the RNA pellet was washed with 75% ethanol, dried and resuspended in 84 μ l of ultrapure water containing 0.2% (w/vol) diethylpyrocarbonate (Sigma-Aldrich, Saint-Quentin, France). Possible DNA contamination was eliminated by DNase treatment (Promega France, Charbonnières, France) for 30 min at 37°C, in a final volume of 100 μ l containing: 4 U RQ1 RNase-free DNase, 40 U RNasin ribonuclease inhibitor (Promega France, Charbonnières, France), 1 \times RQ1 DNase buffer (Promega France, Charbonnières, France). We added 1 μ l Stop Solution and incubated the mixture at 65°C for 10 min. RNA was quantified by determining absorbance at 260 nm and purity was assessed by determining the A_{260}/A_{280} ratio.

Reverse transcription

Reverse transcription was performed in an iCycler thermocycler (Bio-Rad, Hercules, CA), using 0.2 ml thin-walled tubes (Applied Biosystems, Foster City, CA, USA). RNA (5 μ g) was first incubated at 65°C for 10 min with 0.5 μ g oligodT_(12–18) (Invitrogen, Cergy Pontoise, France), and reverse transcription was then initiated by adding 5 U AMV reverse transcriptase (Promega France, Charbonnières, France), 32 U RNasin (Promega France, Charbonnières, France), 1 mM each dNTP (Promega France, Charbonnières, France) and 1 \times AMV reverse transcriptase buffer, in a final volume of 40 μ l. The reaction was allowed to proceed for 1 h at 42°C and cDNA was stored at -20°C.

PCR amplification of porcine SAA in mammary gland and densitometric quantification

We carried out a BLASTN search of the GenBank dbEST database. As no homologous porcine EST was identified based on the porcine SAA cDNA sequence, primers F0 and R0 were designed from dog, mink, guinea pig, rabbit and human SAA cDNA sequences, CM59173, in a region relatively well conserved between SAA of different subtypes and different animal origins, using VectorNTI software (Invitrogen, Cergy Pontoise, France). The forward degenerate primer was F0 (5'-TCAAGGGGCTTGGGACATG-3') and the reverse degenerate primer was R0 (5'-AGGGCAGACCAAGAGGAAG-3'), yielding a PCR product of 330 bp. PCR amplification was performed using the *Pfu* DNA polymerase (Promega France, Charbonnières, France).

PCR was carried out for SAA cDNA amplification, in a total volume of 20 μ l containing 100 ng of cDNA, 1 U Taq polymerase (Promega France, Charbonnières, France), 0.2 mM of each dNTP, 0.5 μ M of each primers, 1 \times Taq polymerase buffer (Promega France, Charbonnières, France), 2 mM MgCl₂ (Promega France, Charbonnières, France). Sense F1 (5'-TCTGACATGAGAGAGGCCAAC-TAC-3') and anti-sense R1 (5'-GTCAGGCAGGCCACGAG-GTCT-3') primers were designed on the basis of our porcine SAA cDNA sequence obtained from the F0-R0 PCR product. The porcine cyclophilin gene was used as a constitutively expressed 'housekeeping' gene control, to determine the uniformity of the reverse transcription reactions. Primers were used as previously described [59]. The amplification conditions were carefully chosen to obtain signals in the linear range of amplification. Amplification products (10 μ l) were loaded onto a 2% TBE agarose gel stained with ethidium bromide (0.01%), subjected to electrophoresis and visualised under a UV transilluminator. The fluorescence intensity of the bands was determined using the Alpha Imager Gel Analysis System Fluorchem version 2.00 (Alpha Innotech Corporation, San Leandro, CA, USA). A single PCR product, of 270 bp for porcine SAA and 369 bp for cyclophilin, was obtained and analyzed by DNA sequencing.

Culture and differentiation of HL-60 cells and stable expression of N-formyl peptide receptor-like 2 in undifferentiated HL-60 cells

Promyelocytic HL-60 cells were cultured in RPMI 1640 medium/glutaMax I supplemented with 10% of heat inactivated foetal calf serum. The maximal density was maintained below 2×10^6 cells/ml and, at each passage, cells were centrifuged and resuspended in an appropriate volume of complete medium in order to reach a density of 2×10^5 cells per ml. To trigger the expression of both N-formyl peptide receptor (FPR) and N-formyl peptide receptor-like 1, HL-60 cells were differentiated to a neutrophil-like phenotype by adding N⁶, O-2'-dibutyryl ade-

nosine 3',5' cyclic monophosphate (Bt₂cAMP) at the final concentration of 1 mM for 3 days. The stable expression of FPRL2 in undifferentiated HL-60 cells has been previously described [62].

Determination of changes in cytosolic calcium in differentiated HL-60 cells and undifferentiated FPRL2 expressing HL-60 cells

Cells were washed with PBS and the cell pellets were suspended, at a density of 2×10^7 cells/ml, in RPMI medium without phenol red containing 0.1% BSA. Cells were supplemented with Fura 2-AM (Molecular Probes, Eugene, OR, USA) at a final concentration of 2 μ M for 30 min, at 37°C. Cell suspensions were then diluted with two volumes of the same medium without BSA, washed once in 10 ml of Ringer-Krebs buffer, and suspended in RPMI medium without phenol red at a density of 2×10^7 cells/ml. Calcium measurements were carried out with a SPEX FluoroMAX fluorescence spectrophotometer with excitation wavelengths of 340 and 380 nm (the ratio 340/380 is calculated when the signal is weak), an emission wavelength of 505 nm and slit widths of 5 and 10 nm, respectively. Intracellular free calcium concentrations were calculated using the following formula: $(Ca^{2+})_i = K_D(F - F_{min}) / (F_{max} - F)$ with a K_D for Fura-2 of 224 nM; F_{max} is the fluorescence in the presence of 0.04% Triton X-100 and F_{min} the fluorescence obtained after addition of 5 mM EGTA plus 30 mM Tris-HCl, pH 7.4.

Expression of results and statistical analysis

The results of migration assays are expressed in each experiment as the mean number of migrating lymphocytes \pm SEM of triplicates. Specific migration was calculated as the difference between the mean number of lymphocytes migrating in the presence of chemoattractant and the mean number migrating in the control medium (i.e. undergoing spontaneous migration). SAA mRNA levels are presented as the mean \pm SEM of the ratio of the band intensity of the SAA RT-PCR product over that of the corresponding cyclophilin RT-PCR product (Log SAA – Log Cyclophilin). Means were compared by variance analysis and the Dunnett's *t* test or Student's *t* test. Differences were considered significant if $p < 0.05$. All statistical evaluations were carried out and graphs plotted with GraphPad Prism 4.03 (GraphPad software, Inc., San Diego, CA, USA).

Abbreviations

CA: Chemoattractant Activity; MG: Mammary Gland; MLN: Mesenteric Lymph Node; ILN: Inguinal Lymph Node; FCM: Flow Cytometry Medium; fMLP: formyl-Methionyl-Leucyl-Phenylalanine; MS: Mass Spectrometry; MS/MS: Tandem Mass Spectrometry.

Authors' contributions

BJR and CC participated in the study design, performed the experiments, and helped to draft the article. GH, DM, JL performed some analysis (MS-MS, purification), and helped to draft the article. IVP and GH helped to design primers, to carry out PCR analysis, and helped to draft the article. MB helped to carry out PCR, and to draft the manuscript. FB carried out the calcium flux experiments, and helped to analyse the results. FM wrote the article. HS conceived the study, participate in the study design and coordination, and wrote the manuscript. All authors read and approved the final manuscript.

Acknowledgements

This work was supported by grants from the *Institut National de la Recherche Agronomique*. B.R. was supported by a doctoral fellowship from the Animal Health Department. We thank Dr M. Pescowitz for generously donating Mabs, Dr E. Authie for reviewing the manuscript and the UE PRC and UE PII for animal care.

References

1. Salmon H, Berri M, Gerds V, Meurens F: **Humoral and cellular factors of maternal immunity in swine.** *Dev Comp Immunol* 2009, **33**:384-393.
2. Picker LJ, Butcher EC: **Physiological and molecular mechanisms of lymphocyte homing.** *Annu Rev Immunol* 1992, **10**:561-91.
3. Chabaudie N, Le Jan C, Olivier M, Salmon H: **Lymphocyte subsets in the mammary gland of sows.** *Res Vet Sci* 1993, **55**:351-5.
4. Lee CS, Meeusen E, Brandon MR: **Subpopulations of lymphocytes in the mammary gland of sheep.** *Immunology* 1989, **66**:388-93.
5. Parmely MJ, Manning LS: **Cellular determinants of mammary cell-mediated immunity in the rat: kinetics of lymphocyte subset accumulation in the rat mammary gland during pregnancy and lactation.** *Ann N Y Acad Sci* 1983, **409**:517-33.
6. Tanneau GM, Hibrand-Saint Oyant L, Chevaleyre CC, Salmon HP: **Differential recruitment of T- and IgA B-lymphocytes in the developing mammary gland in relation to homing receptors and vascular addressins.** *J Histochem Cytochem* 1999, **47**:1581-92.
7. Parrott DM: **Source, identity and locomotor characteristics of lymphocyte populations migrating to mammary glands: problems and predictions.** In *Immunology of breast milk* Edited by: DDH Ogra PL. New-York: Raven Press; 1979:131-141.
8. Roux ME, McWilliams M, Phillips-Quagliata JM, Weisz-Carrington P, Lamm ME: **Origin of IgA-secreting plasma cells in the mammary gland.** *J Exp Med* 1977, **146**:1311-22.
9. Salmon H: **The mammary gland and neonate mucosal immunity.** *Vet Immunol Immunopathol* 1999, **72**:143-55.
10. Bourges D, Chevaleyre C, Wang C, Berri M, Zhang X, Nicaise L, Meurens F, Salmon H: **Differential expression of adhesion molecules and chemokines between nasal and small intestinal mucosae: implications for T- and sigA+ B-lymphocyte recruitment.** *Immunology* 2007, **122**:551-61.
11. McDermott MR, Bienenstock J: **Evidence for a common mucosal immunologic system. I. Migration of B immunoblasts into intestinal, respiratory, and genital tissues.** *J Immunol* 1979, **122**:1892-8.
12. Weisz-Carrington P, Grimes SR Jr, Lamm ME: **Gut-associated lymphoid tissue as source of an IgA immune response in respiratory tissues after oral immunization and intrabronchial challenge.** *Cell Immunol* 1987, **106**:132-8.
13. Salmon H, Olivier M, Delouis C, Paly J, Fevre J: **A study of lymphocyte migration into the mammary gland of pregnant sows by in vivo labelling of lymph nodes.** In *Cell mediated immunity* Edited by: Quinn PJ. Ceminar CEE; 1984:216-223.
14. Berri M, Meurens F, Lefevre F, Chevaleyre C, Zanillo G, Gerds V, Salmon H: **Molecular cloning and functional characterization of porcine CCL28: Possible involvement in homing of IgA antibody secreting cells into the mammary gland.** *Mol Immunol* 2008, **45**:271-277.

15. Meurens F, Berri M, Whale J, Dybvig T, Strom S, Thompson D, Brownlie R, Townsend HG, Salmon H, Gerdtz V: **Expression of TECK/CCL25 and MEC/CCL28 chemokines and their respective receptors CCR9 and CCR10 in porcine mucosal tissues.** *Vet Immunol Immunopathol* 2006, **113**:313-327.
16. Wilson E, Butcher EC: **CCL28 controls immunoglobulin (Ig)A plasma cell accumulation in the lactating mammary gland and IgA antibody transfer to the neonate.** *J Exp Med* 2004, **200**:805-9.
17. Czinn SJ, Lamm ME: **Selective chemotaxis of subsets of B lymphocytes from gut-associated lymphoid tissue and its implications for the recruitment of mucosal plasma cells.** *J Immunol* 1986, **136**:3607-11.
18. Rudloff HE, Schmalstieg FC Jr, Mushtaha AA, Palkowetz KH, Liu SK, Goldman AS: **Tumor necrosis factor-alpha in human milk.** *Pediatr Res* 1992, **31**:29-33.
19. Bottcher MF, Jenmalm MC, Bjorksten B: **Cytokine, chemokine and secretory IgA levels in human milk in relation to atopic disease and IgA production in infants.** *Pediatr Allergy Immunol* 2003, **14**:35-41.
20. Fronteau D, Tanneau GM, Henry G, Chevalyere C, Leonil J, Salmon H: **Activités chimiotactiques de lait d'artiodactyle sur les lymphocytes porcins.** *Journ Rech Porcine* 1998, **30**:363-367.
21. Salmon H: **Immunophysiology of the mammary gland and transmission of immunity to the young.** *Reprod Nutr Dev* 2003, **43**:471-5.
22. Fletcher MP, Stahl GL, Longhurst JC: **In vivo and in vitro assessment of porcine neutrophil activation responses to chemoattractants: flow cytometric evidence for the selective absence of formyl peptide receptors.** *J Leukoc Biol* 1990, **47**:355-65.
23. Uhlar CM, Burgess CJ, Sharp PM, Whitehead AS: **Evolution of the serum amyloid A (SAA) protein superfamily.** *Genomics* 1994, **19**:228-35.
24. Chang WC, Chen WTK, Ding ST: **The effect of dietary docosa-hexaenoic acid enrichment on the expression of porcine hepatic genes.** *Asian-Aust J Anim Sci* 2007 in press.
25. Urieli-Shoval S, Cohen P, Eisenberg S, Matzner Y: **Widespread expression of serum amyloid A in histologically normal human tissues. Predominant localization to the epithelium.** *J Histochem Cytochem* 1998, **46**:1377-84.
26. McDonald TL, Larson MA, Mack DR, Weber A: **Elevated extrahepatic expression and secretion of mammary-associated serum amyloid A 3 (M-SAA3) into colostrum.** *Vet Immunol Immunopathol* 2001, **83**:203-11.
27. Whitehead AS, de Beer MC, Steel DM, Rits M, Lelias JM, Lane WS, de Beer FC: **Identification of novel members of the serum amyloid A protein superfamily as constitutive apolipoproteins of high density lipoprotein.** *J Biol Chem* 1992, **267**:3862-7.
28. Lavie G, Zucker-Franklin D, Franklin EC: **Degradation of serum amyloid A protein by surface-associated enzymes of human blood monocytes.** *J Exp Med* 1978, **148**:1020-31.
29. Shephard EG, de Beer FC, de Beer MC, Jeenah MS, Coetzee GA, Westhuyzen DR van der: **Neutrophil association and degradation of normal and acute-phase high-density lipoprotein 3.** *Biochem J* 1987, **248**:919-26.
30. Bausserman LL, Herbert PN: **Degradation of serum amyloid A and apolipoproteins by serum proteases.** *Biochemistry* 1984, **23**:2241-5.
31. Borulf S, Lindberg T, Mansson M: **Immunoreactive anionic trypsin and anionic elastase in human milk.** *Acta Paediatr Scand* 1987, **76**:11-5.
32. Skogen B, Natvig JB: **Degradation of amyloid proteins by different serine proteases.** *Scand J Immunol* 1981, **14**:389-96.
33. Xu L, Badolato R, Murphy WJ, Longo DL, Anver M, Hale S, Oppenheim JJ, Wang JM: **A novel biologic function of serum amyloid A. Induction of T lymphocyte migration and adhesion.** *J Immunol* 1995, **155**:1184-90.
34. Preciado-Patt L, Levartowsky D, Prass M, Hershkovitz R, Lider O, Fridkin M: **Inhibition of cell adhesion to glycoproteins of the extracellular matrix by peptides corresponding to serum amyloid A. Toward understanding the physiological role of an enigmatic protein.** *Eur J Biochem* 1994, **223**:35-42.
35. Gatt ME, Urieli-Shoval S, Preciado-Patt L, Fridkin M, Calco S, Azar Y, Matzner Y: **Effect of serum amyloid A on selected in vitro functions of isolated human neutrophils.** *J Lab Clin Med* 1998, **132**:414-20.
36. Su SB, Gong W, Gao JL, Shen W, Murphy PM, Oppenheim JJ, Wang JM: **A seven-transmembrane, G protein-coupled receptor, FPRL1, mediates the chemotactic activity of serum amyloid A for human phagocytic cells.** *J Exp Med* 1999, **189**:395-402.
37. Linke RP, Bock V, Valet G, Rothe G: **Inhibition of the oxidative burst response of N-formyl peptide-stimulated neutrophils by serum amyloid-A protein.** *Biochem Biophys Res Commun* 1991, **176**:1100-5.
38. Le Y, Murphy PM, Wang JM: **Formyl-peptide receptors revisited.** *Trends Immunol* 2002, **23**:541-8.
39. Prat C, Bestebroer J, de Haas CJ, van Strijp JA, van Kessel KP: **A new staphylococcal anti-inflammatory protein that antagonizes the formyl peptide receptor-like 1.** *J Immunol* 2006, **177**:8017-26.
40. Bjorkman L, Karlsson J, Karlsson A, Rabiet MJ, Boulay F, Fu H, Bylund J, Dahlgren C: **Serum amyloid A mediates human neutrophil production of reactive oxygen species through a receptor independent of formyl peptide receptor like-1.** *J Leukoc Biol* 2008, **83**:245-53.
41. Brandes M, Legler DF, Spoerri B, Schaerli P, Moser B: **Activation-dependent modulation of B lymphocyte migration to chemokines.** *Int Immunol* 2000, **12**:1285-92.
42. Le Y, Oppenheim JJ, Wang JM: **Pleiotropic roles of formyl peptide receptors.** *Cytokine Growth Factor Rev* 2001, **12**:91-105.
43. Honda S, Campbell JJ, Andrew DP, Engelhardt B, Butcher BA, Warnock RA, Ye RD, Butcher EC: **Ligand-induced adhesion to activated endothelium and to vascular cell adhesion molecule-1 in lymphocytes transfected with the N-formyl peptide receptor.** *J Immunol* 1994, **152**:4026-35.
44. Mechan RP: **Laminin receptors.** *Annu Rev Cell Biol* 1991, **7**:71-91.
45. Ruoslahti E, Pierschbacher MD: **New perspectives in cell adhesion: RGD and integrins.** *Science* 1987, **238**:491-7.
46. Rahman A, Tseng Y, Wirtz D: **Micromechanical coupling between cell surface receptors and RGD peptides.** *Biochem Biophys Res Commun* 2002, **296**:771-8.
47. Ancsin JB, Kisilevsky R: **The heparin/heparan sulfate-binding site on apo-serum amyloid A. Implications for the therapeutic intervention of amyloidosis.** *J Biol Chem* 1999, **274**:7172-81.
48. Steel DM, Whitehead AS: **Heterogeneous modulation of acute-phase-reactant mRNA levels by interleukin-1 beta and interleukin-6 in the human hepatoma cell line PLC/PRF/5.** *Biochem J* 1991, **277**(Pt 2):477-82.
49. Larson MA, Wei SH, Weber A, Weber AT, McDonald TL: **Induction of human mammary-associated serum amyloid A3 expression by prolactin or lipopolysaccharide.** *Biochem Biophys Res Commun* 2003, **301**:1030-7.
50. Zinger M, McFarland M, Ben-Jonathan N: **Prolactin expression and secretion by human breast glandular and adipose tissue explants.** *J Clin Endocrinol Metab* 2003, **88**:689-96.
51. Kaeffler B, Bottreau E, Phan Thanh L, Olivier M, Salmon H: **Histo-compatible miniature, boar model: selection of transformed cell lines of B and T lineages producing retrovirus.** *Int J Cancer* 1990, **46**:481-8.
52. Kaeffler B, Bottreau E, Marcon D, Olivier M, Lantier I, Salmon H: **Histo-compatible miniature pig (d/d haplotype): generation of hybridomas secreting A or M monoclonal antibody.** *Hybridoma* 1991, **10**:731-44.
53. Haverson K, Saalmuller A, Chen Z, Huang CA, Simon A, Seebach J, Boersma WJ, Zwart R, Niewold TA, Thacker E, et al.: **Summary of the first round analyses of the Third International Workshop on Swine Leukocyte Differentiation Antigens.** *Vet Immunol Immunopathol* 2001, **80**:25-34.
54. Lunney JK, Walker K, Goldman T, Aasted B, Bianchi A, Binns R, Licence S, Bischof R, Brandon M, Blecha F, et al.: **Overview of the First International Workshop to Define Swine Leukocyte Cluster of Differentiation (CD) Antigens.** *Vet Immunol Immunopathol* 1994, **43**:193-206.
55. Samsom JN, de Bruin TG, Voermans JJ, Meulenbergh JJ, Pol JM, Bianchi AT: **Changes of leukocyte phenotype and function in the broncho-alveolar lavage fluid of pigs infected with porcine reproductive and respiratory syndrome virus: a role for CD8(+) cells.** *J Gen Virol* 2000, **81**:497-505.
56. Abda R, Chevalyere C, Salmon H: **Effect of cryopreservation on chemotaxis of lymphocytes.** *Cryobiology* 1998, **36**:184-93.

57. Denham S, Zwart RJ, Whittall JT, Pampusch M, Corteyn AH, Bianchi AT, Murtaugh MP, Parkhouse RM, Tlaskalova H, Sinkora J, et al.: **Monoclonal antibodies putatively identifying porcine B cells.** *Vet Immunol Immunopathol* 1998, **60**:317-28.
58. Bourges D, Meurens F, Berri M, Chevaleyre C, Zanello G, Levast B, Melo S, Gerds V, Salmon H: **New insights into the dual recruitment of IgA(+) B cells in the developing mammary gland.** *Mol Immunol* 2008, **45**:3354-62.
59. Bourges D, Wang CH, Chevaleyre C, Salmon H: **T and IgA B lymphocytes of the pharyngeal and palatine tonsils: differential expression of adhesion molecules and chemokines.** *Scand J Immunol* 2004, **60**:338-50.
60. El-Naggar AK, Van Epps DE, Williams RC Jr: **Human-B and T-lymphocyte locomotion in response to casein, C5a, and f-met-leu-phe.** *Cell Immunol* 1980, **56**:365-73.
61. Zigmond SH, Lauffenburger DA: **Assays of leukocyte chemotaxis.** *Annu Rev Med* 1986, **37**:149-55.
62. Christophe T, Karlsson A, Dugave C, Rabiet MJ, Boulay F, Dahlgren C: **The synthetic peptide Trp-Lys-Tyr-Met-Val-Met-NH2 specifically activates neutrophils through FPRL1/lipoxin A4 receptors and is an agonist for the orphan monocyte-expressed chemoattractant receptor FPRL2.** *J Biol Chem* 2001, **276**:21585-93.

Publish with **BioMed Central** and every scientist can read your work free of charge

"BioMed Central will be the most significant development for disseminating the results of biomedical research in our lifetime."

Sir Paul Nurse, Cancer Research UK

Your research papers will be:

- available free of charge to the entire biomedical community
- peer reviewed and published immediately upon acceptance
- cited in PubMed and archived on PubMed Central
- yours — you keep the copyright

Submit your manuscript here:
http://www.biomedcentral.com/info/publishing_adv.asp

