



HAL
open science

Modeling water and ion diffusion in clays: A multiscale approach

Benjamin Rotenberg, Virginie Marry, Jean-François Dufrêche, Natalie Malikova, Eric Giffaut, Pierre Turq

► **To cite this version:**

Benjamin Rotenberg, Virginie Marry, Jean-François Dufrêche, Natalie Malikova, Eric Giffaut, et al.. Modeling water and ion diffusion in clays: A multiscale approach. *Comptes Rendus. Chimie*, 2007, 10, pp.1108. 10.1016/j.crci.2007.02.009 . hal-00369632

HAL Id: hal-00369632

<https://hal.science/hal-00369632v1>

Submitted on 9 Nov 2018

HAL is a multi-disciplinary open access archive for the deposit and dissemination of scientific research documents, whether they are published or not. The documents may come from teaching and research institutions in France or abroad, or from public or private research centers.

L'archive ouverte pluridisciplinaire **HAL**, est destinée au dépôt et à la diffusion de documents scientifiques de niveau recherche, publiés ou non, émanant des établissements d'enseignement et de recherche français ou étrangers, des laboratoires publics ou privés.

Modelling water and ion diffusion in clays : A multiscale approach

Modélisation de la diffusion de l'eau et des ions dans l'argile : une approche multiéchelles

Benjamin Rotenberg^{1,2,*}, Virginie Marry¹, Jean-François Dufrêche¹,
Natalie Malikova^{3,4}, Eric Giffaut² and Pierre Turq¹

*rotenber@ccr.jussieu.fr, marry@ccr.jussieu.fr,
dufreche@ccr.jussieu.fr, malikova@anl.gov,
eric.giffaut@andra.fr, pt@ccr.jussieu.fr*

¹ *Université Pierre et Marie Curie-Paris6,
Laboratoire Liquides Ioniques et Interfaces Chargées,
UMR CNRS 7612,
4 pl. Jussieu, Paris F-75005,
+33 (0)144273118 (fax: 3228)*

² *ANDRA, Parc de la Croix Blanche,
1/7 rue Jean Monnet,
92298 Châtenay Malabry cedex,
F-75005 France,
+33 (0)146118202*

³ *Argonne National Laboratory - IPNS Division 9700 S Cass Avenue,
Argonne, IL 60611 USA,
+1 6302527912 and*

⁴ *Laboratoire Léon Brillouin CEA Saclay 91191 Gif-sur-Yvette Cedex France,
+33 (0)169089701*

Abstract

The safety analysis of geological disposal of nuclear waste relies on a comprehensive understanding of the structural and dynamic properties of the geological medium hosting the repository. In this context, a vast research program has been undertaken on the migration of radionuclides (mainly ions) in clays, under the supervision of ANDRA. In parallel to the experimental determination of empirical parameters describing the transport at the macroscopic scale, some theoretical efforts have been made to base such a description on a microscopic view of the transport mechanisms. We review here some of the theoretical approaches developed up to now in our research group, with a particular focus on their complementarity.

L'analyse de sûreté du stockage géologique de déchets nucléaires repose sur une compréhension détaillée des propriétés structurales et dynamiques du milieu géologique susceptible d'accueillir un site de stockage. Dans ce contexte, un vaste programme de recherche coordonné par l'ANDRA a été entrepris pour étudier la migration des radionucléides dans l'argile. Parallèlement à la détermination expérimentale de paramètres empiriques décrivant le transport à l'échelle macroscopique, des efforts théoriques ont été faits pour asseoir de telles descriptions sur une compréhension à l'échelle microscopique des processus de transport. Cet article est une revue des approches théoriques abordées dans notre groupe de recherches, où l'accent est mis sur leur complémentarité.

PACS numbers:

Keywords: montmorillonite clay, ion transport, multiscale, nuclear waste, argile, transport ionique, multiéchelles, déchets nucléaires

1. INTRODUCTION

High level, long-lived (HLLL) nuclear waste represents a small volume fraction ($\sim 1\%$) of the total nuclear waste, but concentrates the major part of its activity. Among this waste, one finds fission products (such as ^{137}Cs and ^{90}Sr), actinides, and activation products. Due to their high radioactivity level, they need to be kept away from the biosphere while their activity decreases, and due to their long life, this confinement must last over hundreds of thousands of years. The general strategy to ensure the confinement of these waste is based on a multibarrier concept, each barrier contributing to the retention of the waste (mainly charged particles), thereby preventing its release.

At present, HLLL are first vitrified in a borosilicate matrix, and embedded in a steel container. There is now an international consensus on the relevance (and feasibility) of completing this packaging by storing these parcels in deep geological disposal. If chosen appropriately, the geological medium itself participates in the confinement of waste by acting as the main barrier on the long term. In this context, a number a studies has been undertaken in many countries producing nuclear waste [1]. Since its creation in 1991, the Agence Nationale pour la gestion des Déchets Radioatifs (ANDRA) is in charge of the management of all french nuclear waste, and it supervises a research program aiming at providing the necessary data for assessing the feasibility of a geological storage of HLLL, developing a repository concept, and finally the realization of such a repository. ANDRA has its counterparts in other countries (NAGRA in Switzerland, ONDRAF in Belgium, SKB in Sweden, ...).

Among the various possible host-rocks, clay formations have attracted a particular attention. Their retention properties, related to their very low permeability, their structural charge and their chemical reactivity (possible binding of species on the mineral surfaces), have made them good candidates for the geological disposal of nuclear waste. In order to assess the safety of such a disposal, a comprehensive study of the structural properties, and most importantly, of the ionic mobility in clays is necessary. The difficulty is related to the multiscale structure of such materials, with relevant lengthscales ranging from 1nm to 1cm as far as the microscopic structure is concerned, up to the kilometer if one then includes empirical descriptions of the medium in macroscopic models to predict the evolution at the geological formation scale.

The determination of empirical parameters to characterize the medium, such as the apparent diffusion coefficient of each species, can be made experimentally. To gain insight in the microscopic mechanisms underlying ionic mobility in clays, a number of theoretical approaches have been undertaken [2]. The purpose of the present article is to review some of these approaches developed in our laboratory, focusing on their complementarity to investigate the properties of such a complex system.

A first class of models assumes the validity of macroscopic equations (e.g. Navier-Stokes for solvent flow, Poisson-Boltzmann for the ionic distributions) to describe the solvent and ions properties at the mesoscopic scale. This is justified only if the water content is high enough. Some results will be given, and the range of validity will be discussed in section 2. When the water content is low, one needs to account for the discrete nature of the solvent in order to describe correctly the structure and dynamics of water and ions in clays. This will be illustrated with molecular simulation results in section 3. Finally, a tentative connection between an atomic description of the system, and a more macroscopic one will be made in section 4, by determining effective parameters using a mesoscopic model based on the molecular simulation results.

2. HYDRATED CLAYS

In this article we will focus on an idealized lamellar system consisting of parallel clay layers separated by a pore containing water and counterions. Even though in real clays several porosities exist, this simple model allows to get insight into the properties of water and ions in two extreme cases : in the clay interlayer (at low hydration, with a water mono- or bilayer between the mineral surfaces) and at a mineral/solution interface (at high hydration).

2.1. Validity of macroscopic descriptions

Montmorillonite clays consist of large particles formed by stacks of negatively charged aluminosilicate layers whose charge is compensated by counterions in between them (Na^+ or Ca^{2+} in soils). When the system is hydrated, water enters into the interlayer to solvate the counterions and as a result the spacing of adjacent clay layers increases.

At high water content, this distance becomes significantly greater than the size of solvent

molecules. The description of such hydrated clays is based on macroscopic equations, such as the Navier-Stokes equation for hydrodynamics or the Poisson-Boltzmann equation for the calculation of the electrostatic properties [3, 4]. These equations are valid at the pore scale, and can be used to derive transport properties at the macroscopic scale (e.g. Darcy’s law for flow induced by a pressure gradient). The validity of these equations is however questionable if the water content is very low. Thus one of the most important questions is the determination of the range of applicability of such macroscopic descriptions. Microscopic simulations taking explicitly into account every ion and every atom have been carried for that purpose. The virtually exact results of Molecular Dynamics (MD) and Monte Carlo (MC) were then used as a benchmark to assess the validity of macroscopic descriptions.

2.2. Microscopic simulations : Technical details

Since montmorillonite clays are rather heterogeneous, in terms of chemical impurities and charge distribution, an idealized composition is used : $M_{0.75} Si_8 (Al_{3.25} Mg_{0.75}) O_{20} (OH)_4$, with $M=Na^+$ or Cs^+ being the counterion. A mineral layer consists of three sheets : An octahedral sheet containing the Al and Mg atoms between two tetrahedral sheets containing the Si atoms. The negative charge of the mineral arises from the substitution of Al^{III} by Mg^{II} . The simulation box contains two half-layers made of eight unit cells whose formula is given above, and one interlayer space with water and counterions. The atom positions are taken from X-ray data [5]. The lateral dimensions of the layer are $20.72 \times 17.94 \text{ \AA}^2$, its thickness 6.54 \AA .

The water is described by the SPC/E model [6] (O-H bond 1.0 \AA , angle H-O-H 109.47 \AA ., charges $-0.848e$ and $+0.424e$ for oxygen and hydrogen atoms respectively). This water model is able to describe accurately the structure of bulk electrolyte solutions and its dielectric constant $\epsilon_r^{SPC/E} = 81.5 \pm 5$ is close to the experimental value $\epsilon_r^{exp} = 78.3 \pm 5$ at 298 K. A similar accuracy is found for the viscosity [7] so that SPC/E is a relevant water model to study the electrostatic properties of a confined solution. SPC/E model was also demonstrated to correctly describe the thermodynamic properties of water even at high temperature [8], as well as water diffusion coefficient, at least up to 330 K [9] The atoms of the clay layer are modelled by charged 6-12 Lennard-Jones potentials with parameters taken from Smith[10]. Long range electrostatic interactions were computed using Ewald summation, and a cut-off

of 8.9 Å was used for Lennard-Jones interactions.

MC simulations were undertaken in the (N, σ_{zz}, T) ensemble, where σ_{zz} refers to the stress perpendicular to the clay layers (1 bar) and $T = 298$ K to the temperature. The equilibrium volume of the box (*i.e.* the interlayer spacing L) was first obtained by varying the number of solvent molecules N in the interlayer space. Only water-saturated states were studied, and values of N for the considered water content are given below. MD simulations in the (N, V, T) ensemble then allowed the dynamic properties of the system to be obtained.

2.3. Validity of the Poisson-Boltzmann treatment

The macroscopic model which is commonly used for the description of electrostatic properties is based on the Poisson-Boltzmann (PB) equation. The solvent is treated as a continuum characterized by its dielectric constant ϵ_r . The negative clay layers of both sides of the pore are modelled by two uniformly charged planes. The surface charge density is $-\sigma$ with $\sigma = 0.0161/2e \text{ \AA}^{-2}$. Within this approach, the cations are considered as point-like.

Using Boltzmann statistics and Poisson equation, the concentration of cations as a function of the vertical dimension z can be calculated analytically [11], with the result :

$$c(z) = \frac{1}{2\pi L_B} \frac{\alpha^2}{\cos^2(\alpha z)} \quad (1)$$

where α is the screening parameter defined by

$$\alpha \tan(\alpha L/2) = 2\pi L_B \sigma / e. \quad (2)$$

$L_B = e^2/4\pi\epsilon_0\epsilon_r k_B T$ is the Bjerrum length and L is the interlayer spacing. The cation profiles are given in figure 1 together with simulated distributions for $L = 52 \text{ \AA}$ and $L = 17 \text{ \AA}$, which correspond to $N = 100$ and 33 water molecules per cation respectively.

The main differences between simulated and analytical curves are the oscillations given by the microscopic model, which are characteristic of the discrete nature of the solvent molecules. Thus, the agreement is very good for the more hydrated state $L = 52 \text{ \AA}$, especially in the middle of the pore. Near the surface, the difference remains whatever the hydration state. This is because the hydration of the cation is neglected in the Poisson-Boltzmann treatment. In fact, Na^+ , which are well hydrated, cannot approach the surface as closely as in the analytical model, due to the finite size of solvating water molecules. For $L = 17 \text{ \AA}$, we

reach the limit of validity of the PB equation. However the agreement is reasonably good, considering that the interlayer space contains only 5 layers of water.

2.4. Ion transport properties from the macroscopic models

Comparison of the results for the structural properties obtained using macroscopic equations with that of molecular modelling showed that for high enough water contents (leading to interlayer spacings $L \gtrsim 15 \text{ \AA}$), these macroscopic models lead to fairly accurate predictions. Similar results can be obtained for structural properties of clays in equilibrium with an electrolyte reservoir, that is water and salt, instead of pure water as discussed hitherto. The presence of salt enriches the dynamic properties of clays, giving rise for example to a DC conductivity. Relying now solely on the macroscopic models, it is possible from the knowledge of the ionic profiles, to evaluate some of the ion transport properties.

The conductivity has several contributions whose order of magnitude varies with increasing concentration [12] :

$$\chi = \chi_{int} + \chi_{salt} + \chi_{e.o.} \quad (3)$$

The first term represents the intrinsic conductivity which arises from the counterions which neutralize the charge of the layers. The second term is the salt conductivity which represents the conductivity of the electrolyte which entered into the interlayer spacings and the third term is the electro-osmotic conductivity which can be calculated from a hydrodynamic approach within the framework of the Mean Spherical Approximation (MSA) [11] :

$$\chi_{e.o.} = \frac{e^2 \alpha^2}{4\pi^2 L_B^2 \eta} \left[\frac{\tan(\alpha L/2)}{\alpha L/2} - 1 \right] \quad (4)$$

The MSA treatment of the specific conductivity of the salt gives χ_{salt} by using the Fuoss-Onsager equations for the non-equilibrium pair distribution functions. We used an analytical theory that gives extended laws for the variation of transport coefficients as a function of concentration for strong and associated electrolytes [13]. In the case of bulk solutions, this theory was found to be in agreement with experimental data up to molar concentrations.

The results of a NaCl model with a mean ionic diameter $d = 3.3 \text{ \AA}$ for the equivalent conductivity $\Lambda = \chi_{salt}/c_{ext}$ are presented in figure 2. Λ starts from zero without added salt, as a consequence of electroneutrality: The counterions must remain in the vicinity of the immobile charged surfaces, and therefore cannot contribute to the DC conductivity. In

the presence of an excess of added salt, it tends to a plateau value depending strongly on the interlayer spacing. Larger interlayer spacings exhibit a broad maximum at low ionic strength. The curves are close to the bulk conductivity only for large interlayer spacings and important external concentrations.

It should be noted that Onsager’s limiting laws are not valid for the relation between equivalent conductivity and external concentration. Indeed, because of the Donnan effect, the internal c_{int} concentration is different from the external one. More precisely, for high surface charge $F = \pi L L_B \sigma / e \geq 1$ at low c_{ext} :

$$c_{int} = \frac{L^2 Z^2 L_B}{\pi} \left(1 + \frac{3}{F} \right) c_{ext}^2 = \xi c_{ext}^2. \quad (5)$$

As a matter of fact, the total equivalent conductivity doesn’t scale as $\sqrt{c_{ext}}$ at low salinities (as it does in a bulk electrolyte), but rather as c_{ext} .

3. MOLECULAR MODELLING OF COMPACTED CLAYS

In the previous section, we showed that the macroscopic models used to describe hydrated clays with or without added salt are not valid anymore when the interlayer space is too narrow, that is when the water content is too low. In figure 1, it can be seen that the simulated distributions of cations already show strong oscillations compared to Poisson-Boltzmann profiles because of the discrete nature of the solvent. This effect is particularly important in compacted clays. At high compaction rates, most of the porosity consists of interlayer porosity [14], in which only one to three water layers are present between the layers. The detailed study of transport properties for such systems requires a molecular modelling via Monte Carlo and molecular dynamics simulations.

3.1. Ion and water distributions

The montmorillonite of section 2 was simulated with one and two layers of water between the layers, that is a much lower water content. For these simulations, the box contained two clay layers and thus two interlayer spaces. Such water contents correspond to $N = 36$ and $N = 72$ water molecules per interlayer respectively, that is 6 and 12 water molecules per cation. Two different counterions were studied : Na^+ , a naturally occurring cation in montmorillonite, and Cs^+ , a potential radionuclide. A snapshot of the simulation box is given

on figure 3. The interlayer spaces found by Monte Carlo in the ($N, \sigma_{zz}=1\text{bar}, T=298\text{K}$) ensemble for the mono- and the bilayer state were 12,3 Å and 15,4 Å for the sodic montmorillonite, and 12,7 Å for the monohydrated Cs-montmorillonite. The bihydrated state of Cs-montmorillonite does not exist experimentally. These results agree with RX diffraction experiments [15–17].

Water distributions in the direction perpendicular to the clay surface are shown on figure 4 for mono- and bihydrated Na-montmorillonite. The peaks on oxygen profiles clearly show the presence of one or two layers of water in the interlayer space. The hydrogen profiles are representative of the preferential orientations of O-H towards the surface of the clay layers. Maps of hydrogen preferential positions along the clay surface (not shown) reveal that H atoms have a tendency to remain around the oxygen atoms of the mineral layers, forming hydrogen bonds with them [18, 19].

Sodium and cesium cations have quite different behaviours towards clay surfaces. Na^+ is well hydrated. In the bihydrated case, it stays in the middle of the interlayer space, surrounded by six water molecules, like in its first hydration shell in bulk water. On the contrary, Cs^+ is not fully hydrated by the interlayer water molecules, and it remains partially coordinated to the clay surface. The Cs^+ trajectories exhibit a site-to-site diffusion of the cation above surface silicon atoms. Surrounded by the three oxygen atoms linked to the silicon, Cs^+ can indeed complete its solvation shell. The maps of their preferential positions along the clay surface in the monohydrated state are given in figure 5. They illustrate the different behaviours more precisely. The very localized Cs^+ fixation sites are quite obvious. In the Na^+ case, the motion is more diffuse but it is clear that contrary to Cs^+ , Na^+ counterions have a behaviour similar to water hydrogen atoms, preferring oxygen surface atoms to silicon and hexagonal cavity centers.

To conclude this structural study, the discrete structure of water is of prime importance in the low states of clay hydrations : The hydration tendencies of the various counterions lead to quite different diffusion behaviours in the interlayer.

3.2. Self diffusion coefficients

Self diffusion coefficients of water molecules and cations can be evaluated from trajectories, by calculating mean-square displacements parallel to clay surfaces as a function of time.

The diffusion coefficient in the direction perpendicular to the clay layers is zero, since the motion is bounded, and is then not considered. Diffusion coefficients of cations in the monohydrated montmorillonite at ambient pressure and temperature were about $10^{-10} \text{ m}^2.\text{s}^{-1}$, that is to say one order of magnitude lower than in bulk water. The same order of magnitude was found for water molecules. In the bihydrated states, diffusion coefficients were only 2 to 3 times lower than in the bulk. It means that differences with the bulk quickly decrease when the number of water molecules is increased. This observation supports the use of macroscopic models for hydrated clays, even for dynamic properties, as explained in section 2. The diffusion coefficients obtained for water agree with coefficients obtained by neutron scattering [20–22]. Moreover, all the diffusion coefficients are in agreement with values obtained in previous simulations [23, 24].

Simulations were performed at various temperatures to evaluate the influence of temperature on diffusion [25]. The study of the obtained trajectories shows that temperature has no effect on the specific behaviours of water, Na^+ and Cs^+ . However, diffusion is accelerated as temperature increases. Diffusion coefficients of water are given on figure 6. Fitting the curves with Arrhénius laws, we find activation energies around 12-15 kJ.mol^{-1} for the monohydrated state and 14-19 kJ.mol^{-1} for the bihydrated state. These activation energies are close to the bulk one (18 kJ.mol^{-1}), even if the diffusion process is quite different (orientations towards the surface, two-dimensional diffusion). Neutron scattering experiments as a function of temperature are in process to test the validity of the simulation results.

4. MESOSCOPIC MODELLING OF COMPACTED CLAYS

Molecular modelling provides a detailed description of water and ion dynamics in compacted clays, but this description is restricted to both small lengthscales (of the order of 1 nm) and short timescales (of the order of a few nanoseconds). In order to link this microscopic information to macroscopic observables, and most importantly to the apparent diffusion coefficient of each species, several routes may be followed. The complex nature of this inhomogeneous system (from the chemical and structural point of view) makes any macroscopic description approximate. Geometrical effects are generally accounted for by a set of empirical parameters : Porosity ω , that is the fraction of the medium accessible to the diffusive species, constrictivity δ , which accounts for the closing/opening of diffusion path-

ways (bottlenecks), and tortuosity τ , which quantifies the length of the diffusion pathways in the medium with respect to the straight trajectory. Experimentally, one can measure independently ω and the ratio δ/τ^2 . In addition to geometric effects, the interactions of the diffusing particles with the mineral surfaces are accounted for in the framework of a diffusion/reaction scheme : An ion can remain temporarily trapped at the mineral surface, thereby reducing its apparent diffusion coefficient. This effect is quantified by a partitioning coefficient K_d , which is the ratio between the concentrations of bound and mobile forms of each chemical species. The apparent diffusion coefficient is determined from these parameters and the "free" diffusion coefficient D_0 via the relation :

$$D_a = D_0 \times \frac{\delta}{\tau^2} \times \frac{\omega}{(\omega + \rho K_d)} \quad (6)$$

with ρ the dry density of the medium.

A diffusion/reaction scheme might seem too simple a description to account for the complex interaction of the diffusing ions with the surrounding medium. However, it already captures some dynamic features induced by the interactions of the ions with the surfaces, and allows for example to make some simple predictions for the dielectric properties of clays at low water content which were shown to be consistent with experimental results [26, 27]. Furthermore, it is possible to make a connection between the atomic level of modelling developed in section 3, and the macroscopic one just described. We do not claim that the latter is rigorous, but rather that it is possible to relate it to a more microscopic description. The general coarse-graining strategy involves two steps : the first one defines a mesoscopic description, where the solvent is described by a continuum, calibrated on the molecular dynamics results, i.e. taking advantage of the microscopic insights gained from molecular modelling; the second step derives, from the mesoscopic model, the parameters defining the diffusion reaction scheme, namely a dimensionless analogue of K_d , and the kinetic rates of the exchange. These two steps are now described in more detail.

4.1. Mesoscopic description

Assuming a separation of timescales between the slow solute (ion) and fast solvent (water) dynamics, one can average over the solvent degrees of freedom, and describe the solute/solvent interaction by a single friction parameter γ (in s^{-1}) : the friction force on an

ion is proportional to its velocity ($\mathbf{F}_{\text{solv}} = -m\gamma\mathbf{v}$), and the resulting diffusion coefficient is given by Einstein's relation $D_0 = v_T^2/\gamma$, with $v_T = \sqrt{k_B T/m}$ the thermal velocity of the ion. The solute/surface interaction is described by an external (free energy) potential V_{eff} , calculated by inversion of the ionic density profiles obtained by molecular dynamics simulations. One is then interested in the probability density function $f(\mathbf{x}, \mathbf{v}, t)$ of finding an ion at a given position with a given velocity, whose moments in velocity space are the ionic density and fluxes :

$$\rho(\mathbf{x}, t) = \int f(\mathbf{x}, \mathbf{v}, t) d\mathbf{v} \quad (7)$$

$$\mathbf{j}(\mathbf{x}, t) = \int f(\mathbf{x}, \mathbf{v}, t)\mathbf{v} d\mathbf{v} \quad (8)$$

This probability density evolves, within this simplified mesoscopic description, according to the Fokker-Planck (FP) equation[28] :

$$\partial_t f + \mathbf{v} \cdot \nabla f = \nabla_{\mathbf{v}} \cdot \left(\gamma\mathbf{v} + \frac{\nabla V}{m} + \frac{\gamma k_B T}{m} \nabla_{\mathbf{v}} \right) f \quad (9)$$

In this equation, the potential V can also include an additional external field (e.g. an electrical field), which is necessary to determine the mobility of the ions. Recently, a lattice method inspired by the Lattice-Boltzmann methodology was developed to solve numerically the FP equation, namely the Lattice Fokker-Planck method [29–32], which we used in this particular context of ionic mobility in compacted clays [33].

Instead of using the potential derived from MD simulations, one can use an analytical ansatz, which respects the characteristic features of the true potential (topology, barrier height, ...). Though approximate, this approach allows to screen efficiently the behaviour of all parameters determined below as a function of the magnitude of the interactions between the ions and the walls. The latter is quantified by the ratio $V_s/k_B T = \beta V_s$, where V_s is the barrier connecting two adjacent free energy minima. The density profiles corresponding to the model potential is shown in figure 7. These profiles are to be compared to those obtained with the fully atomic description of figure 5: There is clearly room for improvement in the Na^+ case, although it already reflects its more diffuse behaviour; the Cs^+ case is more accurately reproduced.

4.2. Ionic mobility and the diffusion/reaction scheme

Starting from this mesoscopic model, we can now determine the mobility of the ions interacting with the mineral surfaces. This is achieved by applying an external force on the ions \mathbf{F}_{ext} , in addition to the one arising from the clay layer itself. The average steady-state velocity is proportional to the applied field, the proportionality coefficient being related to the apparent mobility : $\mathbf{v}_{\text{st}} = \mu_{\text{app}}/m \times \mathbf{F}_{\text{ext}}$. The latter is of course lower than the "free" mobility $\mu_0 = 1/\gamma$ of the ions when no interactions with the walls are present. Within the two-state diffusion/reaction scheme, the ratio μ_{app}/μ_0 is precisely the fraction of mobile ions f_m , that is the ions that are not bound to the surfaces. Translating this fraction of mobile ions in terms of the partitioning coefficient K_d , one gets :

$$K_d = \frac{1 - f_m}{f_m} = \frac{\mu_0 - \mu_{\text{app}}}{\mu_{\text{app}}} \quad (10)$$

Note that the definition of K_d is slightly different from the one given above, because no geometric effects are encompassed in the present description. In particular, this definition makes K_d dimensionless. In addition, deducing K_d from the mobility is closer to its experimental determination from diffusion experiments than to batch sorption experiments. Results for K_d as a function of the interaction parameter βV_s are represented on a logarithmic scale on figure 8. Two regimes clearly appear : For strong interactions with the walls or low temperature, the diffusion is activated (Arrhenius law) with an activation energy which is precisely V_s , the barrier that an ion needs to overcome to move from one energy minimum to the next; for weak interactions or high temperature, no such activated diffusion is seen. These results are consistent with the trajectories observed in MD simulations for sodium (weak interaction case) and cesium (strong interaction case). From the knowledge of the amount of bound ions, it is also possible to determine the adsorption/desorption rates[33], thereby completely specifying the diffusion/reaction model.

5. CONCLUSION

We have reviewed some theoretical approaches developed in our research group to model the structural and dynamic properties of water and ions in clays. The various levels of descriptions used (micro, meso and macroscopic) are complementary. Molecular modelling provides the most accurate description, but is restricted to short length- and timescales.

The small size of the simulated systems also requires to consider a model composition and structure which are idealized compared to the real system. Molecular modelling can be used as a benchmark to assess the range of validity of macroscopic equations (Poisson-Boltzmann and Navier-Stokes), which are of simpler use and give access to transport properties on longer timescales. It can also be used to calibrate mesoscopic models (Fokker-Planck) which provide a well-defined link between the most accurate and more approximate descriptions. Such a complementarity should of course apply to many systems other than clays, and we recommend this multiscale approach for the study of transport at solid/fluid interfaces, for which it has proved particularly powerful.

Acknowledgments

BR acknowledges financial support from ANDRA (Agence Nationale pour la Gestion des Déchets Radioactifs). Financial support of GdR PARIS (Physico-chimie des Actinides et autres Radioéléments aux Interfaces et en Solution) is gratefully acknowledged. LI2C is part of the SFR Sciences Chimiques pour l'Analyse et la Mesure de Paris-Centre.

-
- [1] *International atomic energy agency*, <http://www.iaea.org>.
- [2] ANDRA, *Évaluation de la faisabilité du stockage géologique en formation argileuse*, vol. Dossier 2005 Argile : Synthèse (ANDRA, Châtenay-Malabry, France, 2005).
- [3] A. Revil, P. Leroy, *J. Geophys. Res.* **109**, B03208 (2004).
- [4] A. K. Gupta, D. Coelho, P. M. Adler, *J. Colloid Interface Sci.* **303**, 593 (2006).
- [5] G. W. Brindley and G. Brown, *Crystal Structures of Clay Minerals and their X-ray Identification* (Mineralogical Society, London, 1980).
- [6] H. J. C. Berendsen, J. R. Grigera, and T. P. Straatsma, *J. Phys. Chem.* **91**, 6269 (1987).
- [7] B. Guillot, *J. Mol. Liq.* **101**, 219 (2002).
- [8] J. Brodholt, B. Wood, *J. Geophys. Res.* **98**, 519 (1993).
- [9] M. In Het Panhuis, C.H. Patterson, R.M. Lynden-Bell, *Molec. Phys.* **94**, 963 (1998).
- [10] D. E. Smith, *Langmuir* **14**, 5959 (1998).
- [11] J.-F. Dufrêche, V. Marry, O. Bernard, and P. Turq, *Coll. Surf. A* **195**, 171 (2001).
- [12] A. Lehmani, O. Bernard, and P. Turq, *J. Stat. Phys.* **96**, 379 (1997).
- [13] J.-F. Dufrêche, , O. Bernard, S. Durand-Vidal, and P. Turq, *J. Phys. Chem. B* **109**, 9873 (2005).
- [14] I. C. Bourg, G. Sposito, A. C. M. Bourg, *Clays and Clay Minerals* **54**, 363 (2006).
- [15] R. Mooney, A. Keenan, and L. Wood, *J. Am. Chem. Soc.* **74**, 1371 (1952).
- [16] R. Calvet, *Ann. agron.* **24**, 77 (1973).
- [17] M. Fu, Z. Zhang, and P. Low, *Clays and Clay Minerals* **38**, 485 (1990).
- [18] V. Marry, P. Turq, T. Cartailier, and D. Levesque, *J. Chem. Phys* **117**, 3454 (2002).
- [19] V. Marry and P. Turq, *J. Phys. Chem. B* **107**, 1832 (2003).
- [20] P. Hall, D. Ross, J. Tuck, and M. Hayes, in *Proceedings of the IAEA Symposium Vienna, 1977* (International Atomic Energy Agency : Vienna, 1978, 1978), vol. 1, p. 617.
- [21] J. Tuck, P. Hall, M. Hayes, D. Ross, and C. Poinسیون, *J. Chem. Soc. Faraday Trans.* **80**, 309 (1984).
- [22] N. Malikova, A. Cadéne, V. Marry, E. Dubois, and P. Turq, *J. Phys. Chem. B* **110**, 3206 (2006).
- [23] F.-R. Chang, N. Skipper, and G. Sposito, *Langmuir* **11**, 2734 (1995).

- [24] R. Sutton and G. Sposito, *J. Colloid Interface Sci.* **237**, 174 (2001).
- [25] N. Malikova, V. Marry, J.-F. Dufrêche, C. Simon, P. Turq, and E. Giffaut, *Mol. Phys.* **102**, 1965 (2004).
- [26] B. Rotenberg, A. Cadene, J.-F. Dufrêche, S. Durand-Vidal, J. C. Badot, P. Turq, *J. Phys. Chem. B* **109**, 15548 (2005).
- [27] B. Rotenberg, J.-F. Dufrêche, and P. Turq, *J. Chem. Phys.* **123**, 154902 (2005).
- [28] H. Risken, *The Fokker-Planck Equation* (Springer-Verlag, Berlin, 1989).
- [29] S. Melchionna, S. Succi, and J.-P. Hansen, *Int. J. Mod. Phys. C* **17**, 459 (2006).
- [30] S. Melchionna, S. Succi, and J.-P. Hansen, *Phys. Rev. E* **73**, 017701 (2006).
- [31] D. Moroni, B. Rotenberg, J.-P. Hansen, S. Succi, and S. Melchionna, *Phys. Rev. E* **73**, 066707 (2006).
- [32] B. Rotenberg and D. Moroni, *Phys. Rev. E* **74**, 037701 (2006).
- [33] B. Rotenberg, J.-F. Dufrêche, B. Bagchi, E. Giffaut, J.-P. Hansen, and P. Turq, *J. Chem. Phys.* **124**, 154701 (2006).

FIG. 1: Cation distributions for two different hydration states, corresponding to $N = 100$ and 33 water molecules per cation. Solid lines : Microscopic simulations, dashed lines : Poisson-Boltzmann treatment.

FIG. 2: Equivalent salt conductivity Λ as a function of the external salt concentration for different interlayer distances.

FIG. 3: Snapshot of the simulation box for Cs-montmorillonite for the case of a water monolayer. It contains two layers (with counterions) of formula $\text{Cs}_6 \text{Si}_{64} (\text{Al}_{26} \text{Mg}_6) \text{O}_{120} (\text{OH})_{24}$. Oxygen atoms are in red, H in white, Si in yellow, Al in green and Cs in cyan.

FIG. 4: Water atoms distributions along the direction perpendicular to the clay surfaces. Left : monohydrated Na-montmorillonite. Right : bihydrated montmorillonite. The vertical lines represent the surface of the clay layers.

FIG. 5: Maps of cation distributions parallel to the clay surface. The distributions are given for the elementary crystallographic cell. Left : Monohydrated Na-montmorillonite. Right : Monohydrated Cs-montmorillonite. The density increases with the brightness. The dark and bright circles represent surface oxygen and silicon atoms respectively.

FIG. 6: Water diffusion coefficients as a function of T in the bulk and in mono- and bihydrated homoionic montmorillonites.

FIG. 7: Ionic density corresponding to the effective potential V_{eff} used for the mesoscopic description. Small values of the interaction parameter βV_s result in a diffuse ionic profile, similar to that of Na^+ (a), whereas larger values result in sharply peaked densities, mimicking the Cs^+ behaviour (b). These profiles are to be compared to those obtained with the fully atomic description of figure 5.

FIG. 8: Partitioning coefficient K_d as a function of the interaction parameter β/V_s . The semi-logarithmic plot clearly reveals two regimes : For strong interactions with the walls or low temperature (right), the diffusion is activated (Arrhenius law); for weak interactions or high temperature (left), no such activated diffusion is seen. The solid line indicates the fit to an Arrhenius law with activation energy V_s .

Figure 1

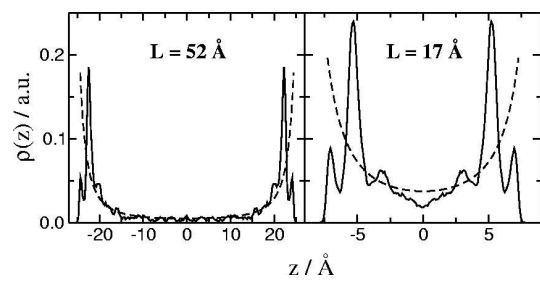


Figure 2

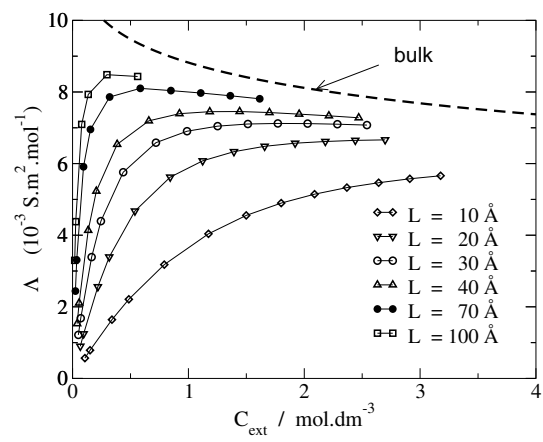


Figure 3

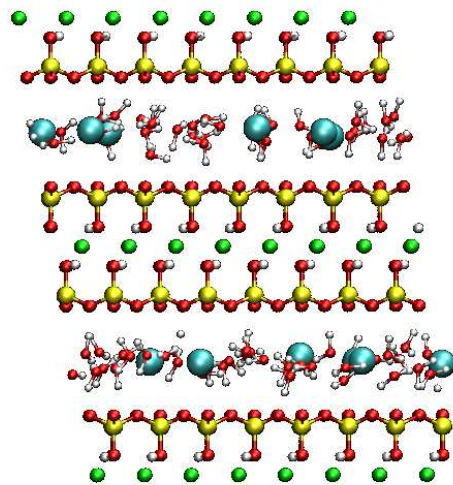


Figure 4

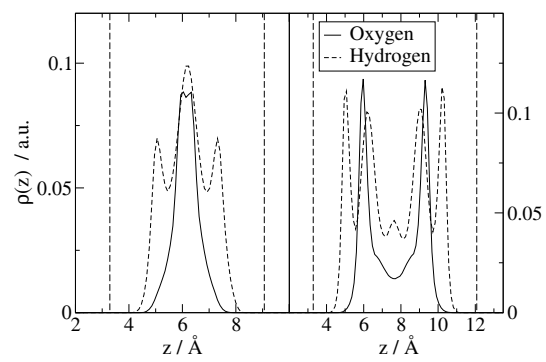


Figure 5

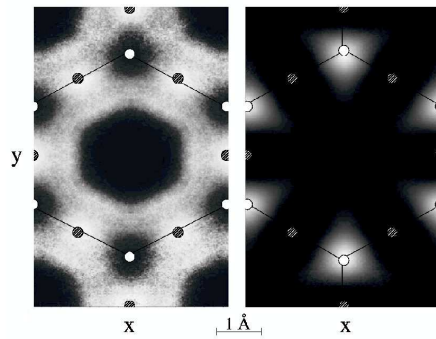


Figure 6

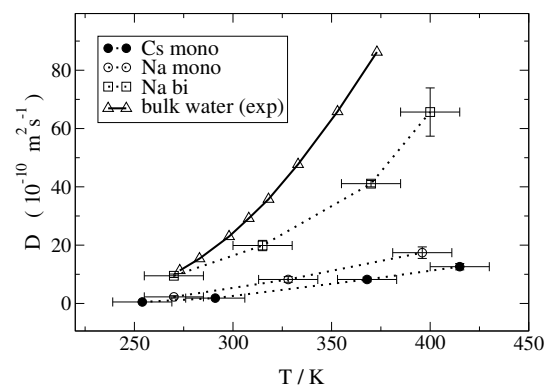


Figure 7

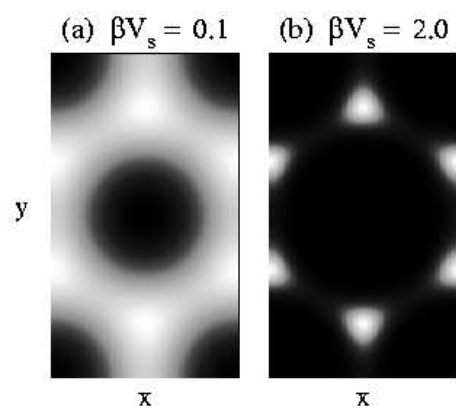


Figure 8

