



**HAL**  
open science

## Linking two consecutive nonmerging magnetic clouds with their solar sources

S. Dasso, C.H. Mandrini, Brigitte Schmieder, H. Cremades, C. Cid, Y. Cerrato, E. Saiz, Pascal Démoulin, A.N. Zhukov, L. Rodriguez, et al.

► **To cite this version:**

S. Dasso, C.H. Mandrini, Brigitte Schmieder, H. Cremades, C. Cid, et al.. Linking two consecutive nonmerging magnetic clouds with their solar sources. *Journal of Geophysical Research Space Physics*, 2009, 114 (A2), pp.A02109. 10.1029/2008JA013102 . hal-00365728

**HAL Id: hal-00365728**

**<https://hal.science/hal-00365728>**

Submitted on 29 Jan 2016

**HAL** is a multi-disciplinary open access archive for the deposit and dissemination of scientific research documents, whether they are published or not. The documents may come from teaching and research institutions in France or abroad, or from public or private research centers.

L'archive ouverte pluridisciplinaire **HAL**, est destinée au dépôt et à la diffusion de documents scientifiques de niveau recherche, publiés ou non, émanant des établissements d'enseignement et de recherche français ou étrangers, des laboratoires publics ou privés.

## Linking two consecutive nonmerging magnetic clouds with their solar sources

S. Dasso,<sup>1,2</sup> C. H. Mandrini,<sup>1</sup> B. Schmieder,<sup>3</sup> H. Cremades,<sup>4</sup> C. Cid,<sup>5</sup> Y. Cerrato,<sup>5</sup> E. Saiz,<sup>5</sup> P. Démoulin,<sup>3</sup> A. N. Zhukov,<sup>6,7</sup> L. Rodriguez,<sup>6</sup> A. Aran,<sup>8</sup> M. Menvielle,<sup>9,10</sup> and S. Poedts<sup>11</sup>

Received 17 February 2008; revised 28 October 2008; accepted 7 November 2008; published 28 February 2009.

[1] On 15 May 2005, a huge interplanetary coronal mass ejection (ICME) was observed near Earth. It triggered one of the most intense geomagnetic storms of solar cycle 23 ( $Dst_{peak} = -263$  nT). This structure has been associated with the two-ribbon flare, filament eruption, and coronal mass ejection originating in active region 10759 (NOAA number). We analyze here the sequence of events, from solar wind measurements (at 1 AU) and back to the Sun, to understand the origin and evolution of this geoeffective ICME. From a detailed observational study of in situ magnetic field observations and plasma parameters in the interplanetary (IP) medium and the use of appropriate models we propose an alternative interpretation of the IP observations, different to those discussed in previous studies. In our view, the IP structure is formed by two extremely close consecutive magnetic clouds (MCs) that preserve their identity during their propagation through the interplanetary medium. Consequently, we identify two solar events in  $H\alpha$  and EUV which occurred in the source region of the MCs. The timing between solar and IP events, as well as the orientation of the MC axes and their associated solar arcades are in good agreement. Additionally, interplanetary radio type II observations allow the tracking of the multiple structures through inner heliosphere and pin down the interaction region to be located midway between the Sun and the Earth. The chain of observations from the photosphere to interplanetary space is in agreement with this scenario. Our analysis allows the detection of the solar sources of the transients and explains the extremely fast changes of the solar wind due to the transport of two attached (though nonmerging) MCs which affect the magnetosphere.

**Citation:** Dasso, S., et al. (2009), Linking two consecutive nonmerging magnetic clouds with their solar sources, *J. Geophys. Res.*, 114, A02109, doi:10.1029/2008JA013102.

### 1. Introduction

[2] Coronal mass ejections (CMEs) remove plasma and magnetic field from the Sun expelling them into interplan-

etary space. When they are detected in the interplanetary (IP) medium, they are called interplanetary coronal mass ejections (ICMEs). The transit time of an ICME from the Sun to 1 AU is typically in the interval 1 to 5 days [Gopalswamy et al., 2000, 2001a; Rust et al., 2005]. A subset of ICMEs, called magnetic clouds (MCs), are characterized by an enhanced magnetic field strength, a smooth and large rotation of the magnetic field vector, and low proton temperature [Burlaga et al., 1981]. Fast and large magnetic clouds are mostly observed at 1 AU in the declining phase of a solar cycle, as it happened in the last one during 2003–2005 [e.g., Culhane and Siscoe, 2007].

[3] Interplanetary type II bursts permit the tracking of fast ICMEs through the analysis of radio emission frequency drift [Reiner et al., 1998, 2007; Hoang et al., 2007]. Assuming the type II emission to be produced at the fundamental or second harmonic of the local plasma frequency, and with help of a heliospheric density model, the radio frequency can be converted to radial distance. This method has still limitations and allows for possible different interpretations because of the patchiness and the frequency range of the observed radio emissions. The evolution of an ICME can also be followed along its journey using a combination

<sup>1</sup>Instituto de Astronomía y Física del Espacio, CONICET-Universidad de Buenos Aires, Buenos Aires, Argentina.

<sup>2</sup>Departamento de Física, FCEN, Universidad de Buenos Aires, Buenos Aires, Argentina.

<sup>3</sup>Observatoire de Paris, LESIA, UMR8109, CNRS, Meudon, France.

<sup>4</sup>Facultad Regional Mendoza, Universidad Tecnológica Nacional, Ciudad Mendoza, Argentina.

<sup>5</sup>Departamento de Física, Universidad de Alcalá, Alcalá de Henares, Spain.

<sup>6</sup>Solar-Terrestrial Center of Excellence, SIDC, Royal Observatory of Belgium, Brussels, Belgium.

<sup>7</sup>Also at Skobeltsyn Institute of Nuclear Physics, Moscow State University, Moscow, Russia.

<sup>8</sup>Departament d'Astronomia i Meteorologia, Universitat de Barcelona, Barcelona, Spain.

<sup>9</sup>LATMOS, IPSL, CNRS, Saint Maur, France.

<sup>10</sup>Also at Département des Sciences de la Terre, Université Paris-Sud, Orsay, France.

<sup>11</sup>Centre for Plasma Astrophysics, Department of Mathematics, Katholieke Universiteit Leuven, Leuven, Belgium.

of solar and IP observations together with the results of numerical simulations [e.g., *Wu et al.*, 1999].

[4] Coronal mass ejections are frequently associated with filament eruptions. The directions of the MC axes are found to be roughly aligned with the disappearing filaments [*Bothmer and Schwenn*, 1994, 1998], preserving their helicity sign. This result has been found for some individual cases by *Marubashi* [1997], *Yurchyshyn et al.* [2001], *Ruzmaikin et al.* [2003], *Yurchyshyn et al.* [2005], and *Rodriguez et al.* [2008]. Some quantitative (quantifying magnetic fluxes and helicities) studies of MCs and their solar sources have been also done [*Mandrini et al.*, 2005; *Luoni et al.*, 2005; *Longcope et al.*, 2007]. But again, it is not so easy to quantify this association and further developments are needed to really understand the fundamental transport mechanisms and interaction with the ambient solar wind (see, e.g., the review by *Démoulin* [2008]).

[5] Furthermore, when multiple CMEs are expelled from the Sun, they can be merged leading to the so-called “CME cannibalism” [*Gopalswamy et al.*, 2001b], mainly as a consequence of magnetic reconnection. The interaction of two CMEs in favorable conditions for reconnection has been studied by *Wang et al.* [2005]. However, from a theoretical point of view, two original structures can be preserved with an appropriate orientation of the ejected flux rope (yielding almost parallel interacting magnetic fields). For example, in the MHD simulations of *Xiong et al.* [2007] the two interacting flux ropes preserved their identity while evolving in the IP medium until they reach the Earth environment or even beyond.

[6] In the magnetohydrodynamic (MHD) framework, a magnetic cloud configuration in equilibrium can be obtained from the balance between the magnetic Lorentz force and the plasma pressure gradient. Several magnetostatic models have been used to describe the configuration of MCs. Frequently, the magnetic field of MCs has been modeled by the so-called Lundquist’s model [*Lundquist*, 1950], which considers a static and axially symmetric (cylindrical) linear force-free magnetic configuration neglecting the plasma pressure [e.g., *Goldstein*, 1983; *Burlaga*, 1988; *Lepping et al.*, 1990; *Lynch et al.*, 2003; *Dasso et al.*, 2005; *Leitner et al.*, 2007; *Xiong et al.*, 2007]. The azimuthal and axial field components of the flux rope in this classical configuration are defined by  $B_\phi = B_0 J_1(\alpha r)$  and  $B_z = B_0 J_0(\alpha r)$ , where  $r$  is the distance to the MC axis,  $J_n$  is the Bessel function of the first kind of order  $n$ ,  $B_0$  is the strength of the field at the cloud axis, and  $\alpha$  is a constant associated with the twist of the magnetic field lines. Some other refined models have also been proposed to describe the magnetic structure of clouds [e.g., *Hu and Sonnerup*, 2001; *Vandas and Romashets*, 2002; *Cid et al.*, 2002]; in particular, some of them consider an elliptical shape [*Hidalgo et al.*, 2002a; *Hidalgo*, 2003] that allows the description of possible distortions of the structures.

[7] On 15–17 May 2005, the strongly southward interplanetary field (above 40 nT) and the high solar wind velocity (close to 1000 km s<sup>-1</sup>), observed by the Advanced Composition Explorer (ACE), are the cause of a super geomagnetic storm with a depression of the *Dst* index reaching -263 nT. The IP structure has the characteristics of a MC. *Yurchyshyn et al.* [2006] associated this structure with the two-ribbon M8.0 X-ray class flare on 13 May at 1632 UT in AR 10759, accompanied by a filament eruption

and CME. These authors identified a single MC, starting at ~0000 UT on 15 May and ending at ~0900 UT on 16 May. An event with different boundaries, much smaller than the one described by *Yurchyshyn et al.*, was identified by *R. Lepping* (start on 15 May at 0542 UT and end on 15 May at 2218 UT). The event was qualified with intermediate fitting quality (quality 2) and had a large impact parameter (catalog at [http://lepmfi.gsfc.nasa.gov/mfi/mag\\_cloud\\_S1.html](http://lepmfi.gsfc.nasa.gov/mfi/mag_cloud_S1.html)).

[8] The solar activity evolution along 13 May has been well described by *Yurchyshyn et al.* [2006] and, more recently, by *Liu et al.* [2007]. Both papers refer mainly to the M8.0 event and conclude that the eruption of a large sigmoidal structure launches the CME observed by the Large Angle and Spectroscopic Coronagraph (LASCO) [*Brueckner et al.*, 1995] at 1722 UT.

[9] In this paper, we present a detailed analysis of the solar wind conditions at the Lagrangian L1 point using in situ observations (magnetic field and bulk plasma properties) and propose an alternative interpretation of the IP observations. In our view, the observed ICME is in fact formed by two MCs. Since a single solar event cannot explain the arrival of two MCs at 1 AU, we revisit the evolution and activity of AR 10759 and other regions present in the solar disk. We start searching in the Sun for two possible sources of the clouds, even earlier than 13 May. We identify a previous candidate event in H $\alpha$  and EUV data on the same day at 1254 UT in AR 10759, which was classified as a C1.5 flare in GOES. These two events, the one at 1254 UT and the one at 1632 UT, give rise to two two-ribbon flares along different portions of the AR magnetic inversion line. The orientations of the magnetic fields associated to both solar events are in good agreement with the fields observed in their associated MCs.

[10] In section 2 we analyze the solar wind conditions near Earth; in particular, we derive the orientation of the axis for the two MCs by fitting a model to the observations. In section 3, we revisit the solar events using ground-based and satellite data. In section 4 we present radio type II remote observations, which let us track the multiple structure through the inner heliosphere. Finally, in section 5, we describe the most plausible physical scenario behind the chain of events from 13 to 17 May 2005, and we give our conclusions.

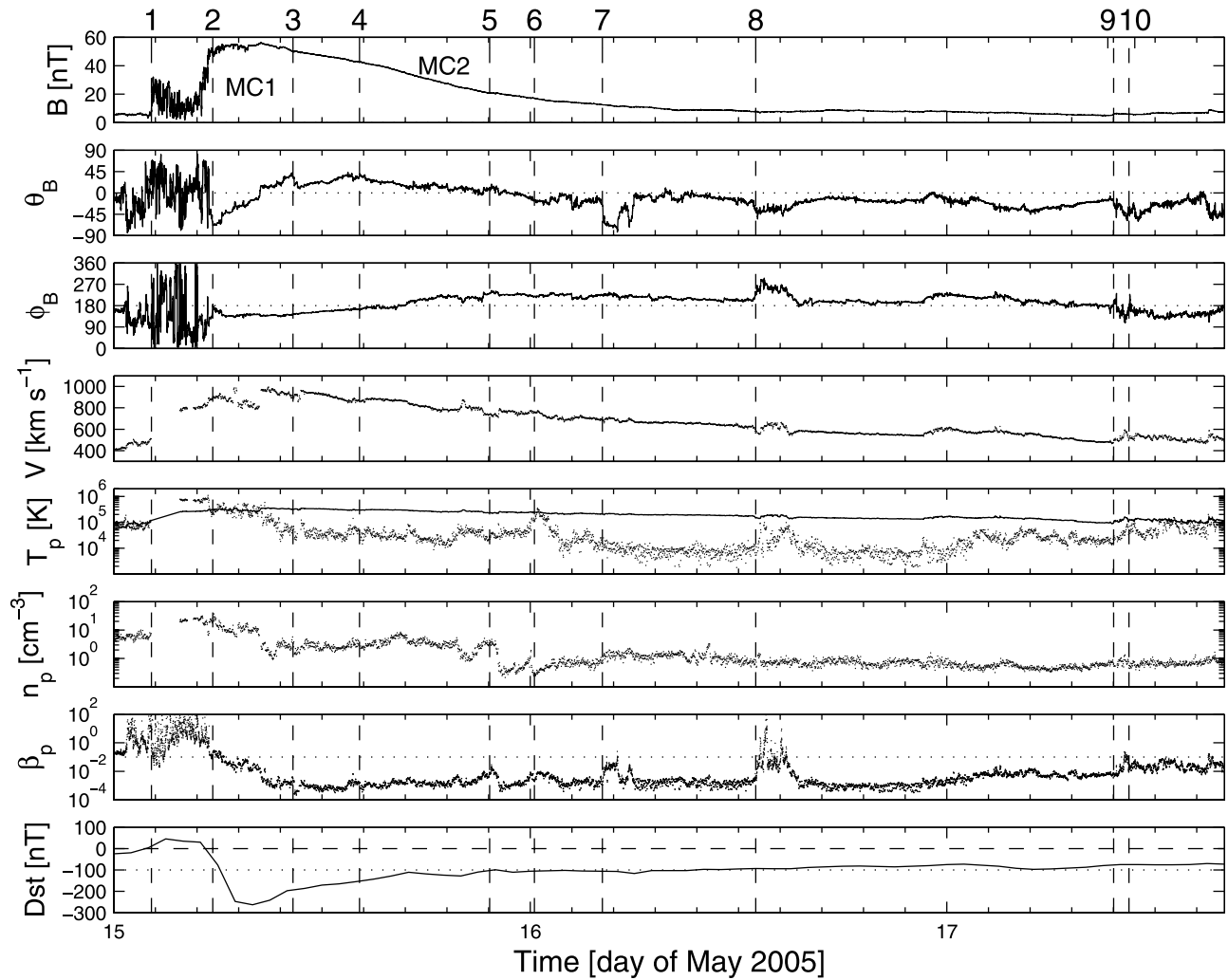
## 2. A Large Interplanetary Coronal Mass Ejection: On 15–17 May

### 2.1. In Situ Plasma and Magnetic Field Observations

[11] The solar wind data were obtained by ACE, located at the Lagrangian point L1. The magnetic field observations come from the Magnetic Fields Experiment (MAG) [*Smith et al.*, 1998] and the plasma data from the Solar Wind Electron Proton Alpha Monitor (SWEPAM) [*McComas et al.*, 1998].

[12] Figure 1 shows the magnetic field (in the Geocentric Solar Ecliptic, GSE, system) and plasma conditions in the solar wind for the long-lasting studied event (0000 UT on 15 May to 1600 UT on 17 May 2005), and the consequent magnetospheric activity (*Dst* index).

[13] The data in Figure 1 show several features consistent with the presence of ICMEs/MCs: low proton plasma beta, proton temperature lower than expected ( $T_{ex}$ ) for a typical



**Figure 1.** In situ (at L1) plasma and magnetic field observations (ACE) of the ICME in May 2005. (top to bottom) Absolute value of the magnetic field ( $B = |\vec{B}|$ ), magnetic field vector orientation (GSE): latitude ( $\theta_B$ ) and longitude ( $\phi_B$ ), bulk velocity ( $V$ ), expected (continuous line) and observed (dots) proton temperature ( $T_p$ ), proton density ( $n_p$ ), proton plasma beta ( $\beta_p$ ), and  $Dst$  index. Vertical lines mark different interfaces (see section 2.1 for a description and Table 1 for timings). Horizontal dotted lines in  $\theta_B$ ,  $\phi_B$ ,  $\beta_p$ , and  $Dst$  mark values at 0, 180, 0.1, and  $-100$  as a reference, respectively.

solar wind at a given observed bulk velocity [Lopez, 1987], an almost linear velocity profile, and a smoothly varying magnetic field orientation of high intensity. In particular, from vertical dashed line 1 to 10 (for timings of tick numbers see next paragraphs and Table 1) the magnetic field intensity is strongly enhanced, although the scale needed to show the whole event in one plot does not allow to observe this enhancement at the end of the time interval. The temporal length of the event is quite large, so that it corresponds to a very extended region,  $\sim 0.93$  AU, one of the largest ICMEs ever observed [see, e.g., Liu *et al.*, 2005, Table 1; Liu *et al.*, 2006a, Figure 1]. At 10, the magnetic field recovers its background value of  $\sim 5$  nT.

[14] From a comparative study between magnetic clouds and complex ejecta, [Burlaga *et al.*, 2001] found that while most of the clouds were associated with single solar sources, nearly all the complex ejecta could have had multiple sources. Evidence was also found indicating that long-duration complex merged interaction regions (with radial extents of

$\sim 0.7$  AU) can be produced by the interaction of two or more CMEs/MCs/shocks [Burlaga *et al.*, 2001, 2003].

[15] In front of the ICME, from 0000 UT to 0211 UT on 15 May (labeled as 1), the solar wind presents typical conditions with a value of  $B \sim 6$  nT, an increasing velocity profile (starting at  $\sim 400$  km s $^{-1}$  and reaching  $\sim 500$  km s $^{-1}$ ), observed proton temperature similar to that expected one ( $T_{ex}$ ) for a typical solar wind at same velocity, an increasing proton density profile from 3 to 10 protons per cm $^3$ , high values of proton plasma  $\beta_p$  (reaching  $\sim 10$ –100), and values of the  $Dst$  index ( $Dst \sim 0$ ) corresponding to relatively quiet ring current conditions.

[16] Observations at 1 suggest the existence of a strong leading edge shock (not fully confirmed from observations of  $V$  because of a gap in plasma data from 0211 UT to 0350 UT on 15 May). Just behind the shock, from 1 to 2, a typical ICME sheath is present (e.g., high level of fluctuations in  $\vec{B}$ , enhanced B strength, high mass density, high  $\beta_p$ ).



**Table 1.** Timings and Substructures Inside the ICME of 15–17 May 2005<sup>a</sup>

Tick	Timing		Substructure
	Day	Time (UT)	
1	15	0211	
2	15	0542	sheath
3	15	1020	MC1
4	15	1410	back1
5	15	2140	MC2
6	16	0015	MC2
7	16	0410	back2
8	16	1300	back2
9	17	0937	back2
10	17	1030	

<sup>a</sup>The substructures' boundaries are identified with numbers in Figure 1.

[17] A structure with a very high  $B$  (50–60 nT), one of the highest values ever observed in the solar wind at 1 AU, is found between 2 and 3. In this range of time, a large-scale coherent rotation of the magnetic field vector is present, with  $\vec{B}$  going from south to north (see  $\theta_B$  panel). This is a left handed SEN flux rope in the classification of *Bothmer and Schwenn* [1998]. Note the presence of a sudden change of the sense of rotation together with a magnetic discontinuity (MD) at 3 (clearly observed in  $\theta_B$ ). A current sheet (i.e., a discontinuity in the observed time series of the magnetic field vector) is expected to be present at the interface that separates two magnetic regions with different magnetic connectivity, i.e., with different magnetic stress. Thus, we interpret the discontinuity at 3 as the signature of the end of a first substructure inside the large ICME. This substructure 2–3 has also specific physical properties: there are no signatures of expansion (the profile of  $V$  does not show a significant slope), and the observed temperature decreases in time (hotter near the sheath and colder near substructure 3–4). As a consequence of the decreasing  $T_p$  profile, values of  $\beta_p$  also decrease, being  $\beta_p \sim 10^{-1}$  near 2 and reaching values as low as  $\beta_p \sim 10^{-3}$  near 3. Thus, the substructure 2–3 presents some MC signatures (low  $\beta_p$ , coherent rotation of the magnetic field vector) but not all ICMEs features (e.g.,  $T_p$  is not significantly lower than  $T_{ex}$ ). This MC presents a short temporal duration with a spatial size along the Sun-Earth direction of  $\sim 0.09$  AU ( $\sim 4$  h multiplied by  $\sim 900$  km s<sup>-1</sup>). We interpret the short duration of the first MC as being due to the compression made by MC2 at its trailing edge; it is expected that the expansion rate (and the consequent cooling) of the first cloud diminished during part of its journey, where the second MC is pushing it from behind [*Wang et al.*, 2003], consistently with observations ( $T_p \sim T_{ex}$ ).

[18] After the MD at 3,  $\theta_B$  continues increasing up to 4, where there is another (weaker, but significant) MD. The region from 3 to 4 shows the characteristics of the back of flux ropes, previously found by *Dasso et al.* [2006] in a significantly large nonexpanding magnetic cloud (October 1995) and by *Dasso et al.* [2007] in another huge magnetic

cloud (November 2004) in strong expansion. The formation of this back feature is a consequence of previous magnetic reconnection between the front of the flux rope and its environment; magnetic flux is removed from the flux rope front (the front is peeled) while its counterpart in the rear part still remains [*Dasso et al.*, 2006, Figure 6]. The formation of a back in fast ICMEs is also supported by numerical simulations [see *Wu et al.*, 2005, Figure 4].

[19] At the difference of previously studied MC backs, the region from 3 to 4 is compressed by the second MC. This region of interaction does not have the same characteristics as corotating interaction regions (CIRs) [e.g., *Pizzo*, 1994] or typical merged interaction regions (MIRs) [e.g., *Burlaga and Ness*, 1993, and references therein]. CIRs are due to a fast SW overtaking a slow SW, and they develop at larger distance from the Sun ( $\geq 10$  AU) than MIRs. The physics involved in the region between two interacting MCs is expected to be different, since MCs have a moderate spatial extension and are structured by the magnetic field. It implies that the compressed plasma can be evacuated on the sides, and that the second MC is able to accelerate fully the first one. Without a significant reconnected flux between the two MCs (when the magnetic fields are nearly parallel) and after a transient period of time from the interaction, the two MCs are expected to travel together (a situation fully different than in the case of a fast SW overtaking a slow SW).

[20] The next substructure that can be identified is 4–7. It is a very huge region ( $\sim 0.3$  AU) that presents a low variance of  $\vec{B}$  and clear signatures of an expanding MC, with a very strong magnetic field that rotates coherently (from northeast to southwest). This region shows an almost linear decay of  $B$  (from  $B \sim 60$  to  $B \sim 15$  nT) consistent with the observed expansion, with a linear  $V$  profile from 900 to 700 km s<sup>-1</sup> during  $\sim 14$  h (equivalent to  $\sim 0.3$  AU), a typical expansion rate observed in MCs [*Démoulin et al.*, 2008]. It also presents values of  $T_p$  significantly lower than  $T_{ex}$ , low proton density ( $n_p \sim 3$  cm<sup>-3</sup>), and very low values of  $\beta_p$  ( $\sim 10^{-3}$ ). All these signatures discard other well-known non-MCs structures (as, e.g., corotating interaction regions).

[21] Inside region 4–7, we also remark 5 and 6. At 5 a strong decrease of  $n_p$  starts and there are small variations in the large-scale trend of  $\theta_B$ ,  $\phi_B$ ,  $B$ , and  $V$ . At 6,  $\beta_p$ ,  $n_p$ , and  $T_p$  have peaks (here  $T_p$  reaches  $T_{ex}$ ). Thus, it is a priori unclear where to set the end of the second flux rope, we can distinguish three possible ends: 5, 6, or 7. Finally, we set it at 7 because, at this position, a very strong MD is found and the coherence of  $\vec{B}$  is lost. The presence of two flux ropes inside this ICME is also supported by applying the Grad-Shafranov technique [*Hu and Sonnerup*, 2002] to the plasma and magnetic field data at L1 (C. Möstl, private communication, 2007).

[22] An expanding structure with ICME signatures (e.g., low proton temperature, low  $\beta_p$ , decreasing  $V$  and  $B$  profiles) still remains after 7. At position 8, there is another MD (observed mainly in  $\theta_B$  and  $\phi_B$ ) together with a change in the decay rate of  $B$ . This MD is associated with a sudden increase of  $T_p$  (and consequently of  $\beta_p$ , because  $n_p$  remains approximately constant), while the velocity profile still presents roughly the same slope (i.e., the same expansion rate). Even when the expansion signatures (in both,  $V$  and  $B$ ) and the coherence of  $\vec{B}$  end at 9, low  $\beta_p$  and  $T_p < T_{ex}$  remain along 1 h, until 10. Here  $B$  recovers values as low as those

found in the typical solar wind,  $T_p$  recovers the expected values ( $T_p \sim T_{ex}$ ), the coherence in the rotation of  $\vec{B}$  is lost, and the level of fluctuations (e.g., in  $\vec{B}$ , see panels  $\theta_B$  and  $\phi_B$ ) start to increase significantly. This large region, from 7 to 10, shows the characteristics of an extended back feature belonging to the second flux rope.

[23] The last panel of Figure 1 shows the geomagnetic effect of the ICME, as monitored by the  $Dst$  index (preliminary index downloaded from the OMNI database). From 2 the intensity of the storm increases, because of the high intensity of the driven electric field ( $VB_s \sim 5 \times 10^4$  nT km s<sup>-1</sup>, with  $B_s$  being the southern component of interplanetary magnetic field).

[24] The storm starts its recovery phase at  $\sim 0800$  UT, when the magnetospheric response is the strongest (reaching  $Dst = -263$  nT); we notice a significant change in the decay rate after 3. Later,  $Dst$  remains  $< -100$  nT during part of the recovery phase (until 5). Assuming a pure decay, decay times of  $\tau \sim 5$  h and  $\tau \sim 17$  h are found for the first (from the peak of the storm to 3) and second stage (beyond 3), respectively. These two values are beyond the lower and close to the upper border of the typical range obtained for the ring current decay time,  $\tau = 14 \pm 4$  h, by *Dasso et al.* [2002]. Larger decay times for the recovery phase have been associated with the presence of multiple IP structures near Earth [*Xie et al.*, 2006].

## 2.2. First Magnetic Cloud

[25] In this section, we model the magnetic structure following the sheath (i.e., the data between 2 and 3) that we call the first cloud (MC1).

[26] To better understand the MC properties, we define a coordinate system linked to the cloud in which  $\hat{z}_{cloud}$  is oriented along the cloud axis (with  $B_{z,cloud} > 0$  at the cloud axis). Since the speed direction of a cloud is mainly aligned with the Sun-Earth direction and is much larger than the spacecraft speed, we assume a rectilinear spacecraft trajectory in the cloud frame. This trajectory defines a direction  $\hat{d}$  (pointing toward the Sun). Then, we define  $\hat{y}_{cloud}$  in the direction  $\hat{z}_{cloud} \times \hat{d}$  and finally  $\hat{x}_{cloud}$  completes the right-handed orthonormal base ( $\hat{x}_{cloud}, \hat{y}_{cloud}, \hat{z}_{cloud}$ ).

[27] We define the axis latitude angle ( $\theta$ ) as the angle between the cloud axis and the ecliptic plane, and the axis longitude angle ( $\varphi$ ) as the one between the projection of the cloud axis on the ecliptic plane and the Earth-Sun direction ( $\hat{x}_{GSE}$ ) measured counterclockwise [see *Dasso et al.*, 2006]. We also define the impact parameter,  $p$ , as the minimum distance from the spacecraft to the cloud axis.

[28] The local coordinate system is especially useful when  $p$  is small compared to the MC radius ( $R$ ). In particular, for  $p = 0$  and a cloud described by a cylindrical magnetic configuration  $\vec{B}(r) = B_z(r)\hat{z} + B_\phi(r)\hat{\phi}$ , we have  $\hat{x}_{cloud} = \hat{r}$  and  $\hat{y}_{cloud} = \hat{\phi}$  when the spacecraft leaves the cloud. In this particular case, the magnetic field data will show:  $B_{x,cloud} = 0$ , a large and coherent variation of  $B_{y,cloud}$  (with a change of sign), and an intermediate and coherent variation of  $B_{z,cloud}$ , from low values at one cloud edge, achieving the maximum value at its axis, and returning to low values at the other edge.

[29] The minimum variance (MV) method [*Sonnerup and Cahill*, 1967] has been used to estimate the orientation of MCs [see, e.g., *Bothmer and Schwenn*, 1998; *Lepping et al.*, 1990; *Farrugia et al.*, 1999; *Dasso et al.*, 2003; *Gulisano et al.*, 2005]. In particular, using a synthetic set of ideal

cylindrical clouds, *Gulisano et al.* [2007] have shown that the application of the MV technique to the normalized observed time series of the magnetic field ( $\vec{B}(t)/|\vec{B}(t)|$ ) can provide very good estimations of the cloud axis (when  $0 \leq p/R \leq 0.7$ ). This is feasible because when  $\vec{B}(t)$  is normalized, the information of the rotation of the field vector is not mixed with possible changes in its absolute value during the observations.

[30] We apply the normalized MV method to the observations between 2 and 3. We find a left handed flux rope, oriented such that  $\theta_{MV} = -15^\circ$  and  $\varphi_{MV} = 125^\circ$ , consistent with the SEN orientation determined in section 2.1. From this orientation and the mean bulk speed (894 km s<sup>-1</sup> for this range), we estimate the cloud size perpendicular to its axis as  $\sim 0.08$  AU.

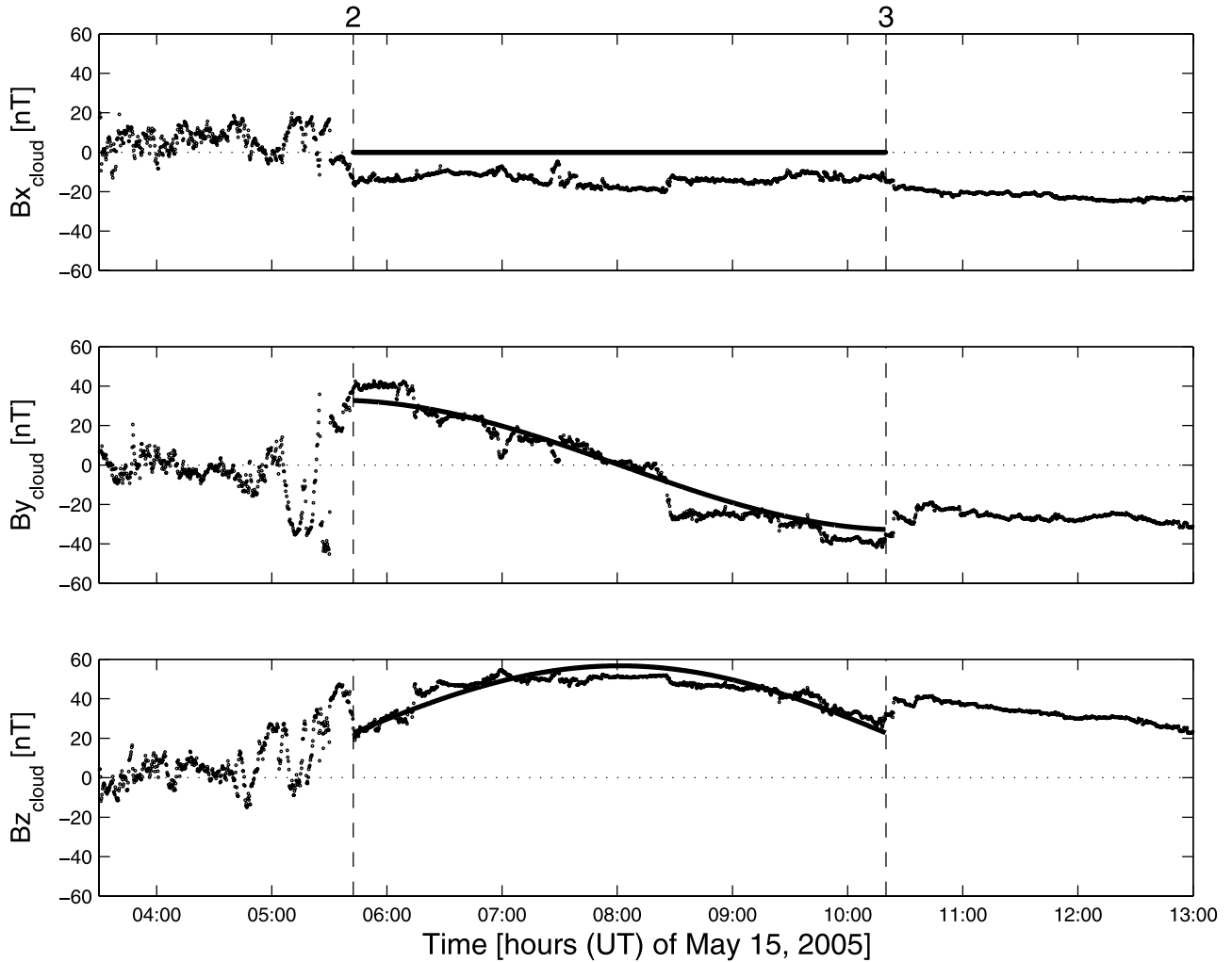
[31] In the MC frame (see Figure 2), the magnetic field has the typical shape observed in clouds. The almost constant  $B_{x,cloud}$  profile (with a mean value  $\langle B_{x,cloud} \rangle \sim -11.5$  nT), indicates that  $p$  is not zero. Moreover, a rough estimation of  $p$  can be achieved using the expression found by *Gulisano et al.* [2007] ( $p/R \sim \sqrt{(\langle B_{x,cloud} \rangle / B_0) / 1.6}$ ), which gives  $p \sim (0.3 - 0.4)R$ .

[32] The MC borders set as 2 and 3 are in agreement with the expected conservation of magnetic flux across a plane perpendicular to  $\hat{x}_{cloud}$  [*Dasso et al.*, 2006], i.e., similar areas below and above the curve  $B_{y,cloud}$  which equals before and after the MC center. These boundaries are also in agreement with the expected MD (current sheets) at the interfaces between two structures with different connectivity (as the boundaries of a flux rope forming a MC).

[33] The MC axis, with  $\varphi_{MV} = 125^\circ$ , is dominantly pointing toward  $\hat{y}_{GSE}$  with a significant contribution toward  $-\hat{x}_{GSE}$ . This is consistent with the spacecraft passing through the right (west) leg of the flux rope and, thus, with the MC apex located toward the left of L1 (observed from Earth to the Sun, with north upward). From the sign of the observed  $\langle B_{x,cloud} \rangle$ , the cloud axis is toward the south of the ecliptic.

[34] Fixing the orientation provided by the MV method, we fit the free parameters of Lundquist's model (see section 1 for the meaning of the free parameters) and obtain  $B_0 = 57$  nT and  $\alpha = -40$  AU<sup>-1</sup>. Solid lines in  $B_{y,cloud}$  (middle) and  $B_{z,cloud}$  (bottom) in Figure 2 show the curves obtained from the fitting, which are in a very good agreement with the observations (dots).

[35] To validate our previous results, we perform a simultaneous fitting (SF) of the geometrical and physical free parameters using the same procedure and numerical code as *Dasso et al.* [2006]. We obtain  $\theta_{SF} = -12^\circ$ ,  $\varphi_{SF} = 129^\circ$ ,  $R_{SF} = 0.04$  AU,  $p/R_{SF} = 0.2$ ,  $B_{0,SF} = 59$  nT,  $\alpha_{SF} = -42$  AU<sup>-1</sup>. The agreement between the results of the SF and those from the MV method followed by the fitting of the physical cloud parameters is well within the precision of the methods (the differences are only  $\sim 4^\circ$  in the orientation, 5% in the radius and 3% in  $B_0$ ). Because of the radial propagation of the solar wind and because of a possible meridional stratification of the solar wind properties, distortions from a cylindrical cross section are expected [see, e.g., *Liu et al.*, 2006b]. From a multispacecraft analysis of the first MC observed by STEREO, an oblated transverse size with the major axis perpendicular to the Sun-Earth direction was found [*Y. Liu et al.*, 2008]. The good match between the



**Figure 2.** ACE observations (dots) of the magnetic field vector components in the cloud frame (see section 2.2) for the first flux rope (observations between 2 and 3). (top)  $B_{x,\text{cloud}}$ , (middle)  $B_{y,\text{cloud}}$ , and (bottom)  $B_{z,\text{cloud}}$ . The solid lines correspond to the fitted curves obtained using the Lundquist model.

observations and the cylindrical model (Figure 2) indicates that this flux rope could have an almost cylindrical configuration (a significant ellipticity would have consequences on the magnetic field profile [see *Vandas and Romashets, 2003*]). Therefore, we conclude that the main characteristics of MC1 are well determined.

### 2.3. Second Magnetic Cloud

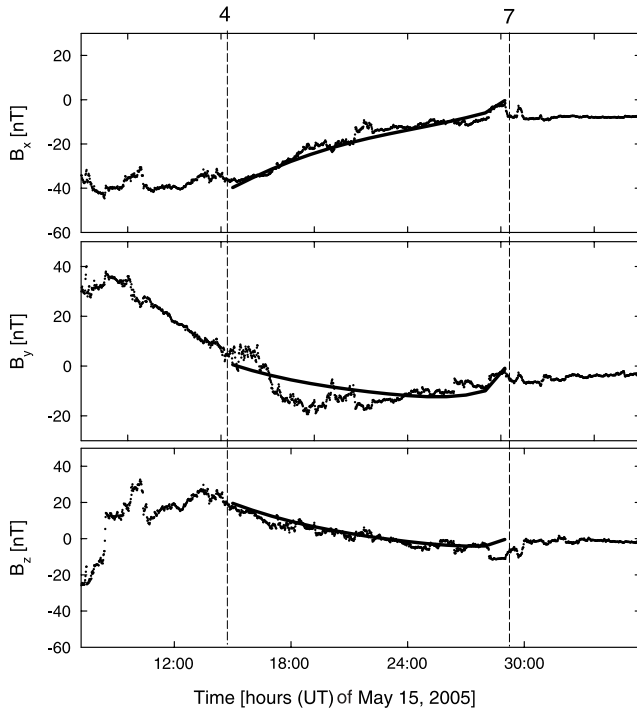
[36] In this section we model the second MC (MC2) observed from 4 to 7. A decreasing velocity profile (see section 2.1) indicates that the cloud is in expansion. The sudden change of  $\theta_B$  at 7 is the most significant of all changes observed in the field after 4; furthermore, after this discontinuity, the expected coherence of  $\vec{B}$  is lost. Thus, as previously discussed in section 2.1, we choose 7 as the rear boundary of MC2.

[37] The use of the MV method for this second MC does not provide meaningful results, since the impact parameter is very large as indicated by the low rotation of the magnetic field vector (Figure 1) and also because  $B_{x,\text{cloud}}$  is the largest field component in the cloud frame (not shown). Moreover, there is significant expansion, thus normalizing the field is

not enough to fully remove this effect. The SF to Lundquist solution, even with a normalized field, cannot provide in this case a reliable result for the same reasons. When the impact parameter is low and the boundaries of the flux rope are well determined, flux rope modeling generally provides a good representation of the magnetic field configuration of a MC [*Riley et al., 2004*]. However, models need to be tested using simultaneous observations of different parts of the same flux rope, e.g., as recently done using STEREO observations [*Y. Liu et al., 2008*] confirming the flux rope geometry of the studied event. Since simultaneous observations from spacecraft with a significant separation are not available for this event, we apply a different model and method for MC2, described below. This model has more freedom in comparison with Lundquist's model used before, such as the oblateness of the cloud cross section [*Liu et al., 2006b*].

[38] Observations of some expanding MCs traveling in the solar wind are consistent with cylindrical expansion [e.g., *Nakwacki et al., 2005; Dasso et al., 2007; Nakwacki et al., 2008*]. However, we can anticipate distortions from the cylindrical shape for MC2 because of the presence of MC1 in its front. Therefore, we compare observations with the





**Figure 3.** Magnetic field vector in GSE components from ACE data (dots) for the second MC (between 4 and 7) and the fitted curve (solid line) using the model of *Hidalgo et al.* [2002b].

model by *Hidalgo et al.* [2002b], which considers a magnetic field with an elliptical cross section. This model has eight free parameters: the magnetic field strength at the cloud axis, the latitude ( $\theta$ ) and longitude ( $\varphi$ ) of the cloud axis, the impact parameter ( $p$ ), the orientation of the elliptical cross section relative to the spacecraft path ( $\zeta$ ), a parameter related to the eccentricity of the cross section ( $\eta$ ), and two other parameters related to the plasma current density.

[39] The fitted curves using the model of *Hidalgo et al.* [2002b] are in very good agreement with observations (Figure 3). The model corresponds to a left handed magnetic cloud with  $\theta = (55 \pm 10)^\circ$  and  $\varphi = (120 \pm 10)^\circ$ .

### 3. Solar Clues for Two Source Events

#### 3.1. Data

[40] In this section, we analyze solar data from the photosphere to the upper corona in search of two candidate solar events that could be the sources of the two MCs described in previous sections.

[41] The photospheric magnetic field evolution is analyzed using observations from the Michelson Doppler Imager (MDI) [*Scherrer et al.*, 1995], on board the Solar and Heliospheric Observatory (SOHO), which measures the line of sight magnetic field at the photosphere. These data are the average of 5 magnetograms with a cadence of 30 s. They are constructed once every 96 min. The error in the flux densities per pixel in the averaged magnetograms is  $\sim 9$  G, and each pixel has a mean area of  $1.96 \text{ Mm}^2$ .

[42] At the chromospheric level we have used full-disk  $H\alpha$  data from Big Bear Solar Observatory (BBSO) and the

Optical Solar Patrol Network (OSPN) at the National Solar Observatory in Sacramento Peak.

[43] To identify changes in the low corona associated to the source regions of the identified MCs, the extreme ultraviolet imaging telescope (EIT) [*Delaboudinière et al.*, 1995] on board SOHO is used. EIT images chromospheric and coronal material through four filters. In particular, we have analyzed the 195 Å band which images plasma at  $1.5 \times 10^6$  K. When available we have used observations taken by the Transition Region and Coronal Explorer (TRACE) [*Handy et al.*, 1999] in the 171 Å band.

[44] The identification of CMEs is done using LASCO on board SOHO, plus proxies for eruptions in the chromosphere and lower corona. For the analyzed time interval, LASCO imaged the solar corona from  $\sim 2$  to 30 solar radii with two different coronagraphs: LASCO C2 (2–6 solar radii) and C3 (4–30 solar radii).

#### 3.2. Solar Activity From 11 to 12 May 2005

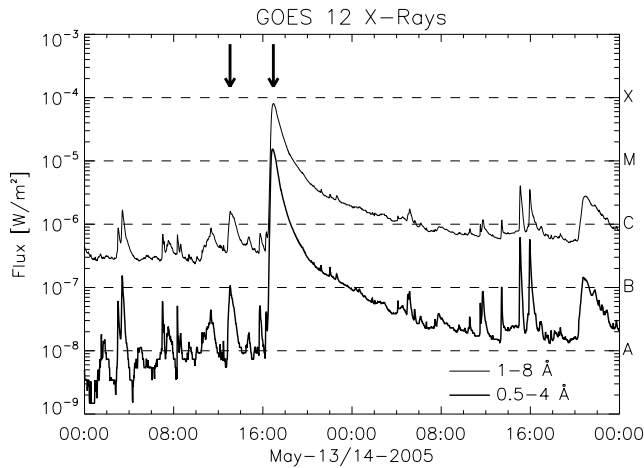
[45] Without any doubt, the main contribution to the larger cloud (MC2) and other IP signatures discussed in previous sections is the halo CME appearing in LASCO C2 at 1722 UT on 13 May (see sections 3.4 and 3.5). However, since we have found that the ACE magnetic field and plasma observations from 0542 UT on 15 May (3) to 1030 UT on 17 May (10) can be interpreted as being comprised by two different structures (see sections 2.2 and 2.3), we describe the solar activity observed by EIT and LASCO preceding the major CME on 13 May.

[46] From 11 May until 13 May 2005, solar activity is mainly concentrated in two ARs, AR 10758 located in the southern hemisphere and AR 10759 in the northern hemisphere, which produces the most intense events. Activity progressively increases in the later region from 11 to 12 May; then, flares reach level 2B in  $H\alpha$  and M1.6 in soft X rays.

[47] On 11 May a CME is first seen in LASCO C2 at 2013 UT above the SW limb. This event is classified as a full halo. The linear and second order fittings to LASCO C2 observations give plane-of-sky (POS) speeds of  $550 \text{ km s}^{-1}$  and  $495 \text{ km s}^{-1}$ , respectively (from LASCO CME Catalog, [http://cdaw.gsfc.nasa.gov/CME\\_list/index.html](http://cdaw.gsfc.nasa.gov/CME_list/index.html)). An M1.1 flare in NOAA AR 10758, located at S11W51, starting at 1922 UT can be associated with this event. Subframes from the EIT shutterless campaign show a raising feature in absorption by 1922 UT. However, the closeness in time/space between the two MCs discussed in section 2.1 makes it highly improbable for this event to be the source of MC1, since by simple assumption of constant speed it would take  $\sim 3.1$  days to reach Earth and then would be expected to arrive before 15 May, i.e., earlier than MC1.

[48] On 12 May, an event (flare, dimming, and loops in expansion) is seen in EIT at about 0157 UT. This event originates in AR 10759 and is accompanied with a C9.4 flare located at N11E31 with peak at 0110 UT. No CME is observed in LASCO. However, a diffuse and gusty outward flow is evident in LASCO C2. There is another apparent event in EIT at about 1356 UT, to the south of AR 10760. The related C3.0 flare occurs in S11W62 at 1340 UT. This event shows an association with a CME, weak and slowly traveling in the SW direction. This CME has a strong component in the POS and, therefore, we do not expect it to be significantly directed toward Earth. Furthermore, from the orientation of AR 10760 polarities during their disk transit,





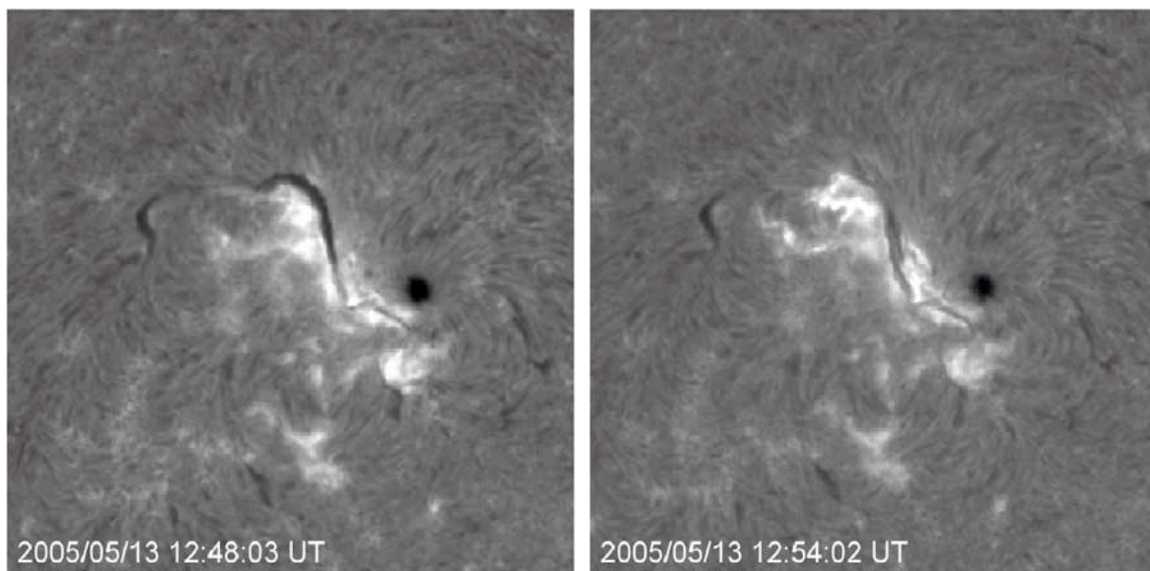
**Figure 4.** GOES light curve from 13 to 14 May. The flares related to the eruptions that we consider to be the sources of the two MCs (see sections 2.2 and 2.3) are pointed by arrows at peak intensity (1304 UT and 1657 UT for the first and the second flare, respectively).

we can infer from MDI data that its magnetic helicity sign is positive, contrary to that of both studied MCs (see the description and interpretation of magnetic tongues by López Fuentes *et al.* [2000, 2003]).

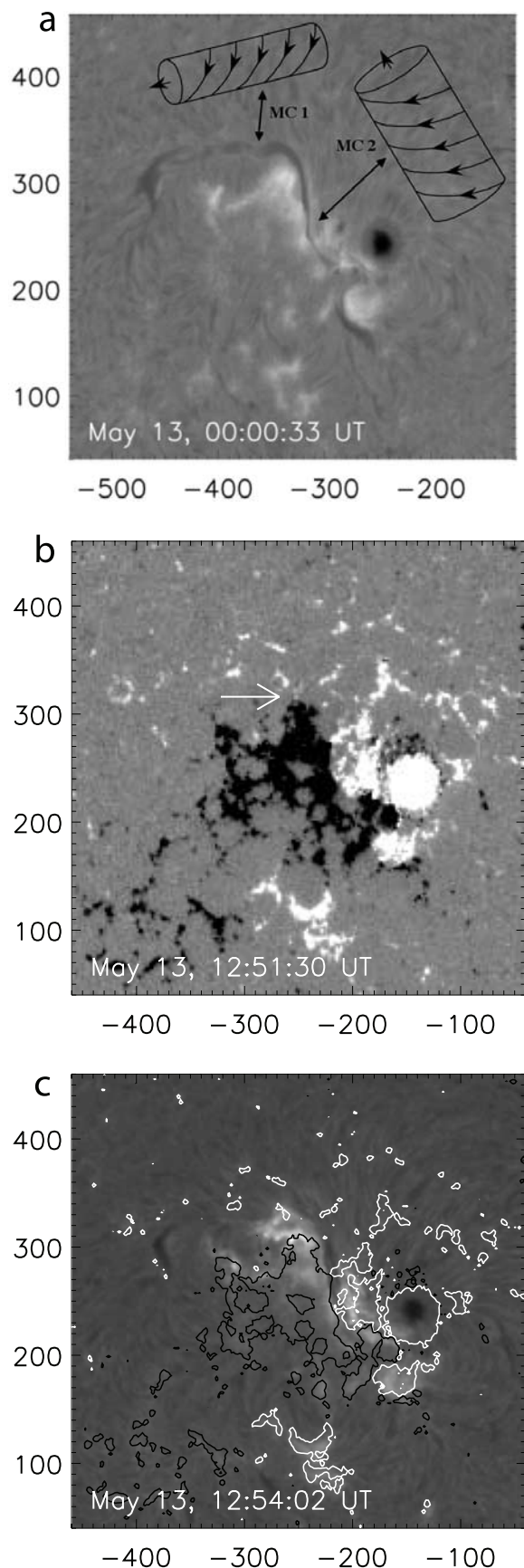
[49] After discarding these previous events, and considering the closeness in time/space between the two MCs analyzed in section 2, we concentrate in the activity observed during 13 May. In the next sections we will present observations and discuss, in particular, two flares and associated filament eruptions that we consider to be the solar source events of the clouds. The flare timings are given by GOES soft X-ray data (Figure 4).

### 3.3. The 13 May Events: Photospheric and Chromospheric Signatures

[50] Along 13 May the filament in AR 10759 is seen to activate several times, mainly in its northern fraction. At 1249 UT a C1.5 flare starts in N17E15, with peak at 1304 UT. The rising filament is seen in  $H\alpha$  and also in TRACE (see Figure 5, left, and section 3.4). At the chromospheric level a two-ribbon flare, classified as a subflare faint, develops along the magnetic inversion line at the north of AR 10759 (Figure 5). This is the only event showing eruptive characteristics at that time on the solar disk. This portion of the inversion line is oriented in the E–W direction. Part of the filament extending along this E–W inversion line is no longer visible by 1254:02 UT. Flare loops linking the two ribbons are also visible in  $H\alpha$  at this time. What may be the cause of the destabilization of the E–W portion of the filament? We have analyzed the magnetic changes observed in the filament channel previous to the flare at 1249 UT, for this we use MDI line of sight magnetic maps. Continuous flux cancellation is observed at the magnetic inversion line along which the erupting part of the filament lies. The E–W northern fraction of the filament shows a nonuniform shape (as being formed by several sections) and some barbs or feet are present (Figure 6a). A small positive polarity is seen to intrude in the negative field in between two sections of the filament (see the arrow in Figure 6b); this single intrusion implies a cancellation of  $\sim 5 \times 10^{19}$  Mx. The close relationship between the flare and the magnetic cancellation site is shown in Figure 6c. MDI low temporal and spatial resolution does not allow us to follow in detail the evolution of the small flux concentrations and ascertain the clear association between their cancellation and filament eruption; however, we believe this to be the most plausible cause. Small-scale magnetic changes in flux concentrations along filament channels have been frequently reported a few hours prior to local filament restructuring [see, e.g., Chae *et al.*, 2000; Deng *et al.*, 2002; Wood and



**Figure 5.** OSPAN  $H\alpha$  images of the flare at 1249 UT. (left) The portion of the filament lying along the E–W northern magnetic inversion line expanding northward. (right) Flare ribbons and flare loops linking the ribbons are visible. The E–W middle portion of the filament is no longer visible.



*Martens, 2003; Schmieder et al., 2006*]. Furthermore, *Zhang et al. [2001]* attributed the origin of the major solar flare and filament eruption on 14 July 2000, to flux cancellation at many sites in the vicinity of the active region filament.

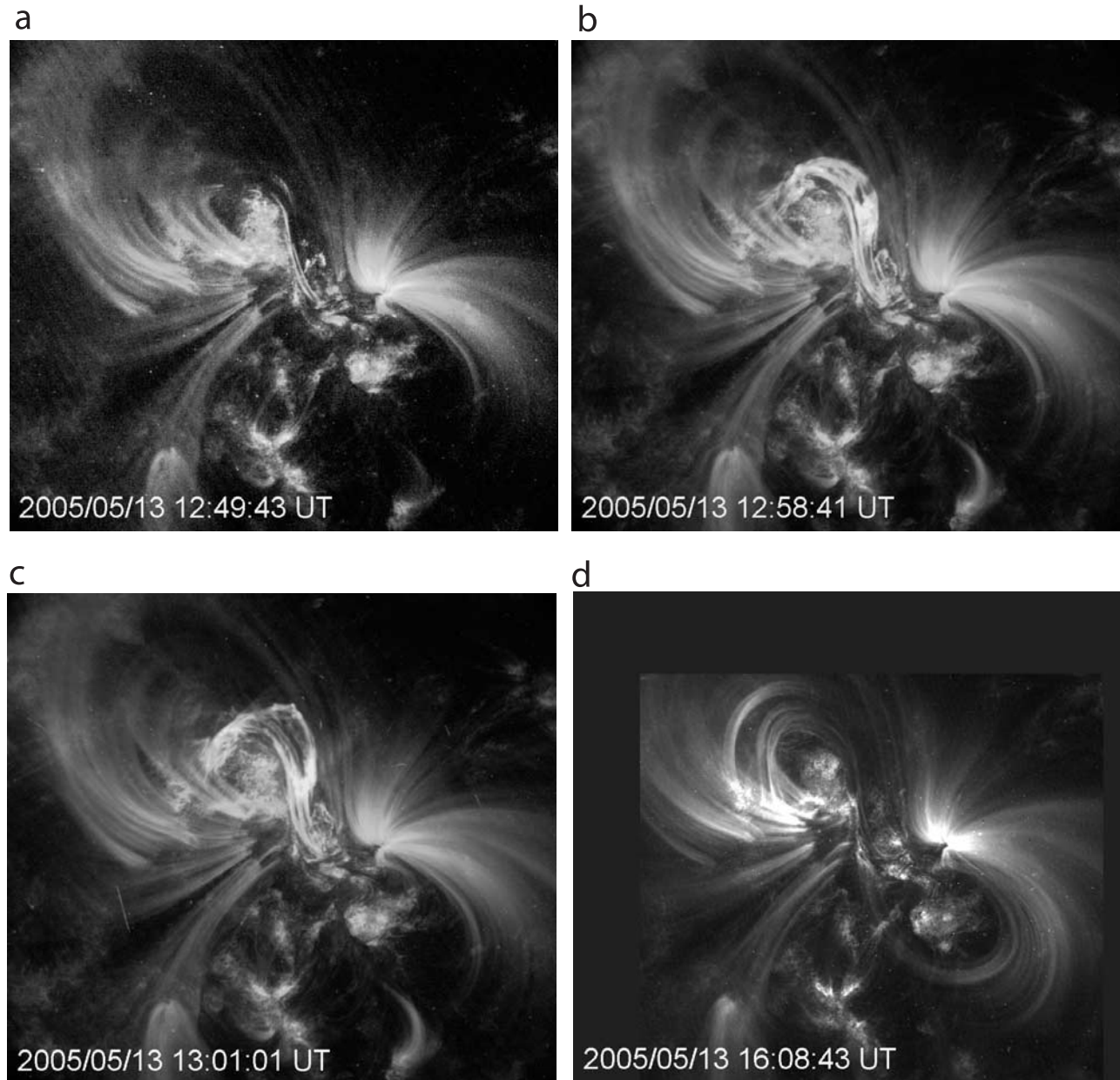
[51] Taking into account that the C1.5 flare occurs by only about 4 h earlier than the main flare and eruption in AR 10759 (see below) and the similar orientation of the MC1 axis and of the magnetic inversion line along which the erupting filament lies (Figure 6a), we consider that the partial eruption of the AR filament is the source of this first cloud. There is evidence for the breakup of filaments into more than one segment, [see, e.g., *Martin and Ramsey, 1972*] and a recent example given by *Maltagliati et al. [2006]*. Even some filaments erupt only partially, or saying it in a different way different portions of the same filament may erupt at different times and trigger different flares [*Martin and Ramsey, 1972; Tang, 1986; Maltagliati et al., 2006; Gibson and Fan, 2006; R. Liu et al., 2008*]. This kind of eruptions have been discussed in the frame of the eruptive flux rope model for CMEs (see the review by *Gibson et al. [2006]*). Moreover, as discussed below in section 3.5, on 13 May there are no other evidences of CMEs in LASCO until 1722 UT.

[52] The solar event following the one just described is the major M8.0/2B flare that starts at 1613 UT and peaks at 1657 UT. This flare ended on 14 May at  $\sim 1700$  UT, being a long-duration event (see Figure 4). The photospheric and chromospheric observations corresponding to this event have been shown and discussed by *Yurchyshyn et al. [2006]* and *Liu et al. [2007]*. The former authors have associated this flare and eruption to a single MC comprising the two we have identified in this paper. We want to stress here that the direction of MC2 axis is in agreement with the orientation of the N–S fraction of the AR filament that lies along the main magnetic inversion line (see Figure 6a).

### 3.4. The 13 May Events: Lower Corona Signatures

[53] In the lower corona, TRACE observes the event at 1249 UT in 171  $\text{\AA}$  (Figure 7). Images before 1239:49 UT and after 1304:27 UT are not useful because of a strong particle shower. TRACE data are dominated by a large-scale sigmoidal structure (with an inverse S shape) previous to the flare well visible by  $\sim 1240$  UT. The small-scale loops linking the two H $\alpha$  ribbons are not distinguishable in TRACE images. By 1249:43 UT the filament can be observed as a dark curved structure surrounded by a brighter one, probably formed by heated filament material (see Figure 7). This bright structure is seen expanding upward until 1304:27 UT, though it is hard

**Figure 6.** Evidence of flux cancellation at the northern E–W portion of the filament channel in AR 10759. (a) BBSO H $\alpha$  image early on 13 May showing the nonuniform shape of the E–W filament portion. The two arrows indicate the axis orientations of the two identified MCs projected on the solar disk. (b) MDI magnetogram closest in time to the flare at 1249 UT (the field has been saturated above and below  $\pm 100$  G). The arrow points to a small positive flux concentration that moves toward the negative field across the filament channel. Several of such flux cancellation episodes occur during 13 May. (c) An overlay of a flare image and the  $\pm 50$  G MDI isocontour (white, positive field; black, negative field). In all images the axes are in arc sec.



**Figure 7.** TRACE images in 171 Å. (a, b, c) Different stages of the expansion of the filament embedded in a brighter curved structure during the flare at 1249 UT. (d) The coronal loop structure recovers its global shape after the C1.5 flare and before the M8.0 flare at 1632 UT. The same region is shown in Figures 7a–7d, though the TRACE field of view is shifted for the image at 1608:43 UT.

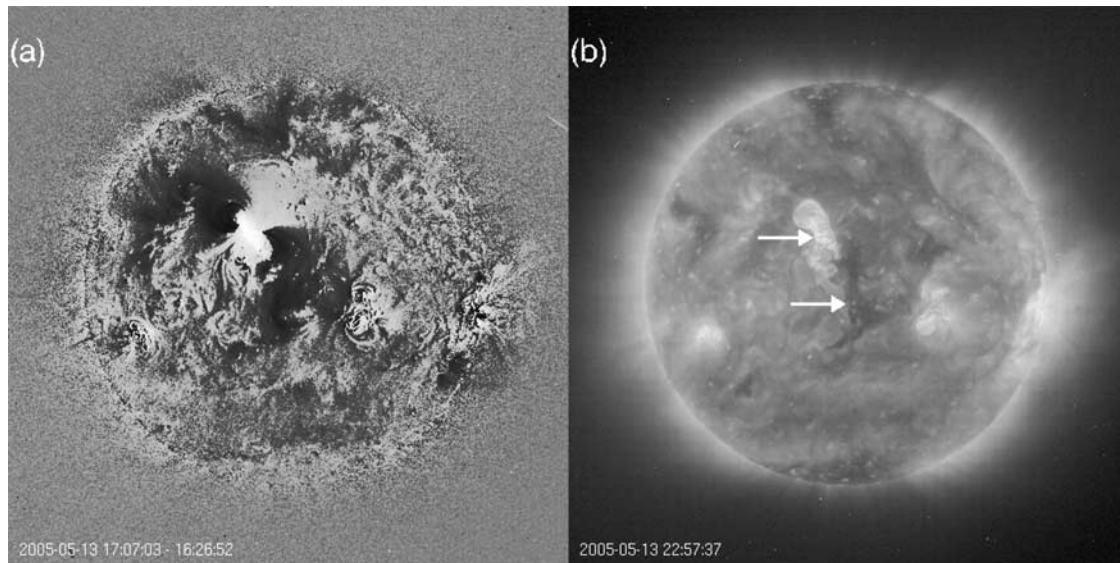
to assure that it erupts because of lack of visibility in the following images (Figures 7b and 7c).

[54] Later on, by  $\sim 1600$  UT (Figure 7d) and before the M8.0 flare, TRACE images appear again dominated by the large-scale sigmoid. This structure is similar to the one described by *Liu et al.* [2007] seen before the M8.0 flare; in their Figure 1 they show the different parts that constitute the sigmoid: the magnetic elbows, the envelope loops (according to the nomenclature of *Moore et al.* [2001]) and the foot points of the sigmoidal fields. Thus, the rising of the bright curved structure, shown in Figures 7b and 7c, is most likely linked to the filament eruption during the first and less

intense two-ribbon flare that we associate with MC1. *Yurchyshyn et al.* [2006] have suggested that the bright structure seen in the central panels of the sigmoid that later starts a slow ascent (by  $\sim 1255$  UT) and become active during the M8.0 flare, but in fact it erupted earlier and reactivated later.

[55] The major eruptive event, linked to an M8.0 flare, is visible in EIT images starting from 1637 UT (see Figure 8). It exhibits several CME-associated phenomena [*Hudson and Cliver, 2001*]: coronal dimmings, a large-scale EIT wave and a posteruption arcade. As it was pointed out by *Liu et al.* [2007], the darkest part of the dimming comprises two patches to the

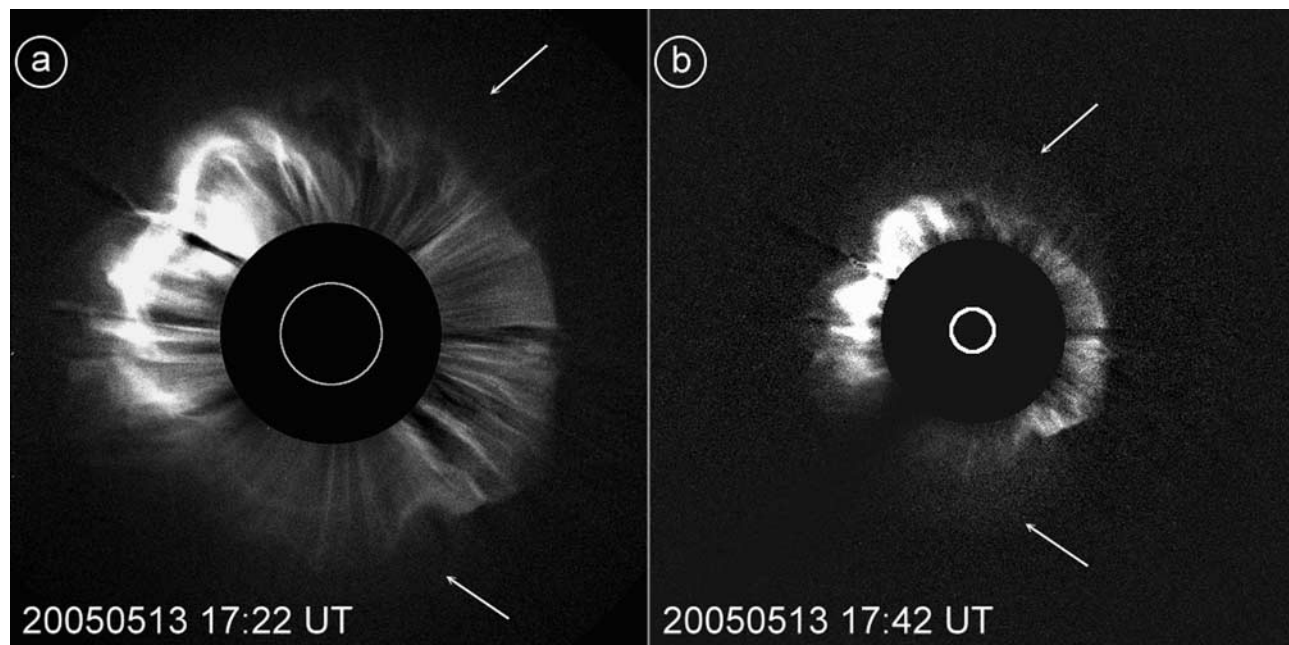




**Figure 8.** (a) SOHO-EIT difference image in the Fe XII band pass ( $195 \text{ \AA}$ ) showing a large coronal dimming (dark areas) corresponding to the CME associated with the M8.0 flare on 13 May 2005. The last preeruption image taken at 1626 UT was subtracted from the image taken at 1707 UT. (b) SOHO-EIT image in the Fe XII bandpass ( $195 \text{ \AA}$ ) taken at 2257 UT on 13 May 2005 (after the start of the CME associated with the M8.0 flare). Posteruption arcade and a transient coronal hole are marked with top and bottom arrows, respectively.

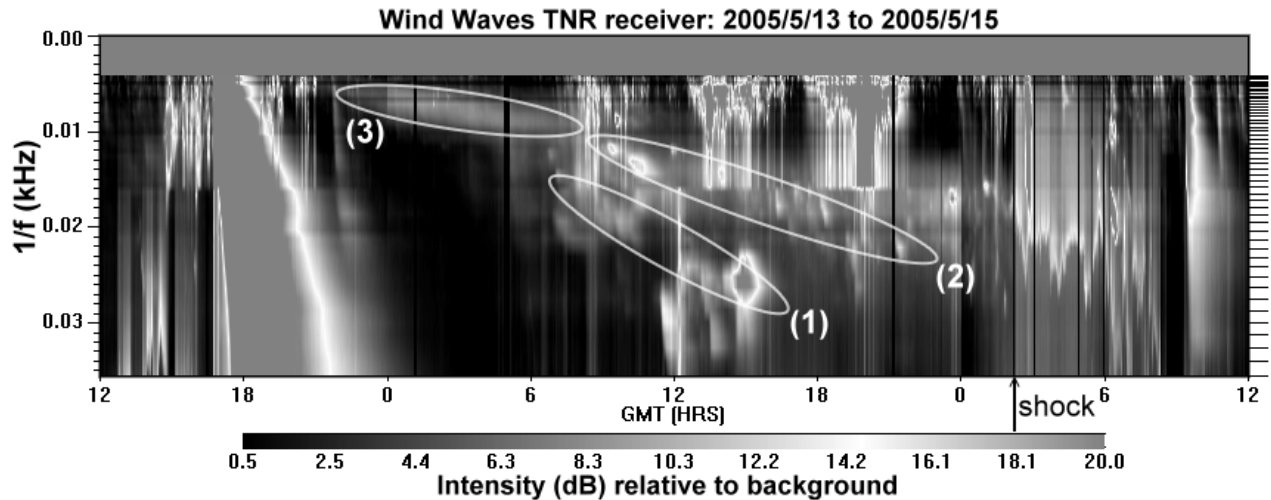
NE and SW of the erupting active region. The SW dimming is associated with a transient coronal hole (shown by the top arrow in Figure 8b). It was suggested that transient coronal holes can be interpreted as foot points of the ejected flux rope [see, e.g., *Webb et al., 2000; Mandrini et al., 2005*]. The absence of the clearly visible second transient coronal hole in this event may indicate that the second leg of the erupted flux rope may have already reconnected with the ambient coronal

magnetic field (this reconnection changes the very extended field lines rooted in the dimming by closed magnetic connections [*Attrill et al., 2006; Kahler and Hudson, 2001*]). The overall morphology of twin dimmings and the presence of the posteruption arcade (Figure 8b) suggest that an eruption of a coronal magnetic flux rope had taken place [e.g., *Hudson and Cliver, 2001*].



**Figure 9.** LASCO images of the halo CME on 13 May 2005, as recorded by (a) LASCO C2 and (b) LASCO C3. A preevent image has been subtracted in both cases. These are the two only full field of view images taken of the event. The arrows indicate the edge of the faintest front.





**Figure 10.** Dynamic spectral plot showing the radio emission recorded by the WAVES-TNR receiver on board Wind between 13 May at 1200 UT and 15 May at 1200 UT. The vertical axis represents  $1/f$  ( $\text{kHz}^{-1}$ ), while the horizontal axis corresponds to time. Three identified type II emissions are labeled (the entity a is associated to 1 and 2 which are the fundamental and harmonic emission at the plasma frequency, and the entity b is associated to 3). The black arrow in the horizontal axis denotes the shock arrival time. Tick marks on the right vertical axis indicate the location of TNR frequency channels for the plotted frequency range.

### 3.5. The 13 May Events: Upper Corona Observations

[56] On 13 May 2005, a full halo CME with brightness asymmetry toward the NE first appears in the field of view of LASCO C2 at 1722 UT (see Figure 9a). Five more partial snapshots of the halo CME were captured by LASCO C3 from 1720 to 1750 UT. The closeness in time of the latter images does not allow to see major changes from one to another, so we present here only one of them (Figure 9b). The estimated POS speed for the fastest front, as calculated by the LASCO CME catalog, is  $\sim 1690 \text{ km s}^{-1}$ . Further information on the kinematics of this CME and its associated shock can be found in section 4 and in the work by Reiner *et al.* [2007].

[57] Enhancement of the LASCO images presented in Figure 9 allows to distinguish a very faint edge toward the south and north, about a couple of solar radii ahead of the brightest one (indicated by arrows). This feature suggests the presence of a shock, as described by Vourlidis *et al.* [2003] and Vourlidis [2006]. Finally, the CME related to the solar eruption at 1249 UT is probably so faint, that its detection was not likely due to sensitivity limitations of LASCO [e.g., Tripathi *et al.*, 2004; Yashiro *et al.*, 2005]. Furthermore, Yashiro *et al.* [2005] conclude that all fast and wide CMEs are detectable by LASCO, but slow and narrow CMEs may not be visible when they originate from disk center. In addition to this restriction, which impedes the visualization of a CME if it is feeble, the LASCO cadence during and after the C1.5 flare at 1249 UT was of 30 min, as opposite to the usual 12 min of LASCO C2.

### 4. Two Structures in the Inner Heliosphere: Remote Radio Type II Observations

[58] When a halo CME leaves the field of view of a coronagraph, it is occasionally possible to further track its evolution by means of measurements in the radio regime of the electromagnetic spectrum. The shock commonly driven by a

CME excites electromagnetic waves emitted at the local plasma frequency ( $f \sim \sqrt{n_e}$ ) and/or its harmonic. As the shock travels outward from the solar corona, the local plasma frequency decreases, and a drifting signal, a type II radio burst, is generated. This brand of emissions can be followed drifting in frequency from  $\sim 150 \text{ MHz}$  down to  $\sim 25 \text{ kHz}$ , which is the approximate value of the local plasma frequency in the vicinity of Earth [Leblanc *et al.*, 1998]. Then, the shock traveling toward Earth is detected by instruments in the IP space, such as WAVES on board Wind [Bougeret *et al.*, 1995]. The ICME can also be detected by ground-based antennas measuring interplanetary scintillation of radio sources [e.g., Manoharan, 2006].

[59] The metric components of type II bursts have long been used by space weather forecasters as input to models of shock arrival time prediction [e.g., Dryer and Smart, 1984; Smith and Dryer, 1995; Fry *et al.*, 2001]. Nevertheless, there is ongoing debate on the mechanism that generates them, questioning their direct relationship with shocks ahead of CMEs [e.g., Pick, 1999; Gopalswamy *et al.*, 2001a; Clafsen and Aurass, 2002; Cane and Erickson, 2005]. Therefore, Cremades *et al.* [2007] attempted to improve space weather forecasts by employing information of type II radio bursts in the kilometric domain (30–300 kHz), which are indeed believed to be generated by IP shocks [Cane *et al.*, 1987]. Accordingly, the slope of the drifting radio emission can be taken as a proxy for the associated shock speed [Reiner *et al.*, 1998]. Furthermore, for each point of emission detected in the spaceborne radio receivers, it is possible to obtain a proxy of the radial distance from the Sun through density models [e.g., Saito *et al.*, 1977; Leblanc *et al.*, 1998; Hoang *et al.*, 2007]. The technique used to characterize the temporally associated radio signals makes use of the density model developed by Leblanc *et al.* [1998]. To obtain the approximate sites of the emissions, and consequently a proxy of the shock speed, it is only needed to enter into the density model an estimate of the plasma density near Earth, usually between  $5 \text{ and } 9 \text{ cm}^{-3}$ .

The top frequency taken into account as input for the technique (300 kHz for the fundamental emission) corresponds approximately to a distance of 20 solar radii according to that heliospheric density model.

[60] We assume that at those heights most of the deceleration has already taken place, and thus that the slope of the linear profile in Figure 10 is enough to characterize the kinematics of a shock that travels at a constant speed. Beyond 20 solar radii, the corresponding frequency channels of the WAVES-RAD1 detector are scarce in comparison with those of WAVES-TNR (see rationale at the end of this section). That is why the main goal of the latter detector is the tracking of radio phenomena up to the orbit of Earth. Further details on the technique, its application and success relative to other methods can be found in the work by *Cremades et al.* [2007].

[61] After the solar events on 13 May, a number of type II radio features in the kilometric domain were observed by the Thermal Noise Receiver (TNR) experiment on WAVES. Figure 10 displays the radio intensity between 13 May at 1200 UT and 15 May at 1200 UT, and from  $f \sim 250$  kHz to  $f = 20$  kHz. In addition, each of the identified low-frequency type II emissions has been labeled as follows: (1) a radio emission drifting at a speed of  $1400 \text{ km s}^{-1}$ , (2) an emission drifting at a speed of  $\sim 1450 \text{ km s}^{-1}$  and certainly being the harmonic of the first feature, and (3) a slower radio emission drifting at a speed of  $\sim 850 \text{ km s}^{-1}$ . The application of the technique described by [*Cremades et al.*, 2007] to emission 1 yielded for its associated shock a predicted arrival time at  $\sim 0240$  UT on 15 May, which is in good agreement with the real shock arrival at Earth (0211 UT). The arrival time derived from radio signal 2 yielded  $\sim 2320$  UT on 14 May. The error of  $\sim 3$  h might be attributed to the ‘patchiness’ of the emission. This effect arises because a single shock may drive type II bursts at multiple places along the shock surface, with the possibility of a large nonradial component of the shock velocity. In addition, there could be significant differences in the drift rates if the density gradient or the local shock speed varies along the shock surface. Under these circumstances entities 1, 2 and 3 could be the manifestation of the shock driven by only one ICME. However, we have no data to justify any of these hypothesis. Moreover, the large difference in propagation speed between entities 1, 2 and 3 suggests that they must be indeed produced by two distinct structures traveling in the solar wind or by the same structure traveling with a significantly slower speed at a first stage of its journey and with a faster speed at its second stage. We will interpret this second possibility in the frame of the global observations in next section (section 5). Finally, the prediction of the arrival time of entity 3 yielded  $\sim 1020$  UT on 15 May. The linear back tracing of this last emission in time matches well with the earlier solar event on 13 May. On the other hand, entities 1 and 2 show good temporal association with the occurrence of the second solar event on 13 May (at 1657 UT).

[62] On the basis of the observations of WAVES-TNR we present here a different interpretation of the sources of the radio signatures than *Reiner et al.* [2007], who used radio data acquired by the WAVES-RAD1 detector (see next paragraph). The TNR observations indicate the existence of 2 interplanetary shock entities, which from now on will be referred to as entity a, the shock traveling at  $\sim 1400 \text{ km s}^{-1}$ , corresponding to 1 and 2, and entity b, the shock traveling at

$850 \text{ km s}^{-1}$ , related to 3. Entity b presumably draws near entity a around 0700 UT on 14 May, at an approximate distance of 98 solar radii from the Sun. There are no visible signs of ‘cannibalism’ [*Gopalswamy et al.*, 2001b] in radio data, likely because of the weakness of entity b and/or because there is no significant reconnection between the two entities. Moreover, it is worth to note that entity a was not visible before 0600 UT on 14 May, as opposite to the slower entity b. A plausible reason for this effect is that entity a may have been moving in an environment plasma faster than the typical solar wind, therefore without leading shock formation.

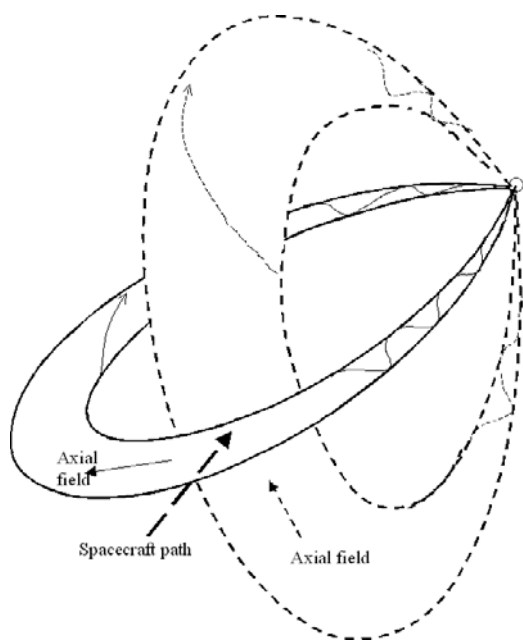
[63] The kinematics analysis performed for the radio event on 13–15 May 2005 by *Reiner et al.* [2007] takes into account entity a only. Those authors present spectral plots of the event that reach down in frequency up to the coverage of the WAVES-RAD1 detector. As seen in Figure 10 of that study, entity b is not obvious from RAD1 measurements. However, it does show up in TNR data, suggesting that *Reiner et al.* [2007] did not consider those data in their analysis. It is most likely that the poor frequency resolution of RAD1 below 256 kHz is guilty of overseeing entity b. The RAD1 detector employs at a time only 32 frequency channels to monitor the range 20–1040 kHz, using only 21 channels below 256 kHz and interpolating to obtain the rest of the data. This may lead to false apparent broadband emissions and to the oversight of some narrowband features in the RAD1 domain. Conversely, the TNR receiver employs 96 channels to cover the frequency range of 4–256 kHz, over five logarithmically spaced frequency bands [*Bougeret et al.*, 1995] (also see location of frequency channels as tick marks on the right vertical axis of Figure 10). This configuration achieves better frequency resolution at distances greater than  $\sim 20$  solar radii, and hence makes it best suitable to study emissions beyond those distances.

## 5. Conclusion

[64] We propose here a fully consistent physical scenario for the chain of events from 13 to 17 May 2005, which is based on a detailed analysis of the observations presented in previous sections.

[65] Two solar events occurred on 13 May with a difference of  $\sim 4$  h, both from AR 10759. The first one, a C1.5 two-ribbon flare that was associated with the ejection of a part of the AR filament extending along the E–W portion of the inversion line (north of the AR). The second and largest one, an M8.0 two-ribbon associated with the ejection of the filament lying along the N–S portion of the inversion line and a CME observed in LASCO C2.

[66] In the IP medium we identify an anomalously long ICME (more than 2 days). Following the results of *Burlaga et al.* [2001, 2003], this suggest the presence of two flux ropes (see section 2.1). Indeed, we have found two clouds (MC1 and MC2). They are stacked together and only the latitude,  $\theta_B$ , of the magnetic field permits to identify in the data two coherent structures separated by a region (called 3–4 in Figure 1) that have a different temporal evolution from neighboring regions. Such conclusion is supported by the various attempts done to fit the data by one or two flux ropes. Indeed, only the two flux rope models presented in section 2 give a reasonably good fit to the data. Figure 11 shows a sketch of the two clouds near Earth, in which we



**Figure 11.** Schematic global view of the two MCs and the trajectory of the spacecraft that observed them. The first MC is drawn with a continuous line (MC1), while the second one is drawn with a dashed line (MC2).

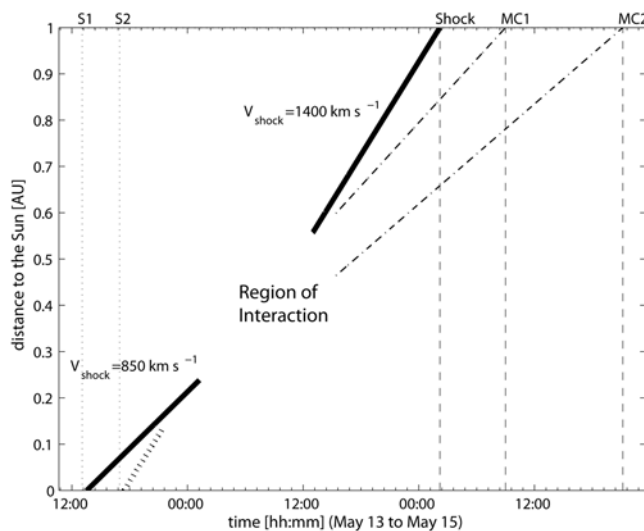
have taken into account their orientations, relative sizes, and the spacecraft trajectory during the observations. The two MCs are oriented such that:  $\theta_{MC1} = (-12 \pm 5)^\circ$ ,  $\varphi_{MC1} = (125 \pm 5)^\circ$ ,  $\theta_{MC2} = (55 \pm 10)^\circ$ , and  $\varphi_{MC2} = (120 \pm 10)^\circ$ . MC1 presents a low-impact parameter ( $p/R \sim 0.2-0.3$ ) and a radius of  $\sim 0.04$  AU, while MC2 is much larger and presents a larger impact parameter; both MCs have negative magnetic helicity. MC1 is small, has a very intense magnetic field, the signature of an overtaking flow penetrating deep in the out bound, and almost no portion with low proton temperature (see Figure 1); all these observations can be interpreted as the consequence of a compression by MC2.

[67] Figure 6a shows the projection on the solar surface of the axes of MC1 and MC2 and the sense of their azimuthal field component, for comparison with the orientation of the erupting parts of the filament associated with the C1.5 and M8.0 flares, respectively. Only the second flare has an observed associated CME, and it is a priori surprising to associate a C1.5 flare to a fast ejection (with a velocity  $\approx 850$  km s $^{-1}$  from radio data); however, it has been shown by *Gopalswamy et al.* [2003, 2005] that the correlation between CME speed and flare intensity is weak. Apart these two issues, the other characteristics of the solar and interplanetary events are in agreement as follows. The erupting filament orientations and directions of the field in their associated arcades (see Figure 5, right, and Figure 8b) are in good agreement with the axial and azimuthal field components in the clouds. The AR field, as well as the two MCs have negative magnetic helicity. Altogether, with the transit time in the expected time interval, this demonstrates the associations between the two solar eruptions to the two interacting MCs detected near Earth.

[68] Moreover, an evidence of the interaction is directly found in the interplanetary radio data, as follow. Radio type II

observations (section 4, entity b) are consistent with a speed for the shock driven by the first ejecta (MC1) of  $\sim 850$  km s $^{-1}$ , when it travels from the Sun up to  $\sim 0.5$  AU (from  $\sim 1300$  UT on 13 May to  $\sim 0700$  UT on 14 May). The shock driven by the second ejecta (MC2) seems to be weaker and is not detected using radio data in this range of time, probably because MC2 travels in a nontypical solar wind medium, i.e., a medium perturbed by the previous passage of MC1, so having a faster speed. It is also possible that this second shock starts to interact with the trailing part of MC1 at earlier times just after its eruption and, thus, it turns to be weaker, as shown from numerical simulations of interaction of flux ropes [*Xiong et al.*, 2007]. Then, at times when MC2 reaches MC1 (at  $\sim 0.5$  AU, on 14 May at  $\sim 0700$  UT), when the exchange of momentum between the two clouds is most efficient, MC1 is accelerated and MC2 is decelerated. Then, both start to travel at similar speeds  $\sim 1400$  km s $^{-1}$ , but keeping their individuality. The shock wave driven by this new combined structure is the cause of the radio emission observed as entity a, identified in section 4. During the second half of the transit to Earth, MC1 is compressed from behind by MC2.

[69] Summarizing, we propose the following interpretation of the sequence of events that occurred on 13 May 2005: two ejective solar events occurred, which could be tracked to the Earth environment and were observed as two attached, but nonmerged, magnetic clouds. Figure 12 shows the position versus time (along the Sun-Earth line) of both interplanetary events, as inferred from the sequence of the observations used for our analyses from the Sun to 1 AU. The presence of structures preserving multiple flux ropes, as the multiple structure studied here, has been observed in



**Figure 12.** Cartoon representing the position (as distance from the Sun along the Sun-Earth line) of the events ejected from the Sun in function of time. Vertical dotted lines (ticks at S1 and S2) represent the time of beginning of solar flares associated with both ejections (13 May,  $\sim 1300$  UT and  $\sim 1600$  UT, respectively). Vertical dashed lines (ticks at shock, MC1, and MC2) represent the arrival of the shock (15 May, 0211 UT) and of the center of magnetic clouds 1 and 2 (15 May,  $\sim 0900$  UT and  $\sim 2100$  UT, respectively).



some cases [Wang *et al.*, 2002]. Signatures of the interaction between ejecta, similar to those found in this study, have also been identified from observations with the following properties: (1) acceleration of the leading ejecta and deceleration of the trailing one, (2) compressed field and plasma in the leading ejecta, (3) weak shock or disappearance of the shock driven by the second ejecta, and (4) strengthening of the shock driven by the leading one [Farrugia and Berdichevsky, 2004].

[70] This study especially illustrates the need of combining solar, in situ and remote sensing of interplanetary propagation of the ejecta, in order to reveal the physical processes. Previous studies of the same event, but mostly limited to one of these three domains have concluded on the presence of only one ejecta (with varying characteristics depending on the study). In the present case, the peculiar characteristics of the in situ observed magnetic field first alert us on the possible presence of two MCs. We confirm this by performing a detailed modeling of the magnetic field exploring various flux rope boundaries. This stimulates a deeper study of data in the two other domains, with the new perspective of testing two ejecta. The solar data were crucial to first confirm the presence of two eruptions, and to define the timing and the spatial organization of the erupting magnetic configurations. This brought us to carry a deeper analysis of interplanetary radio observations. Indeed, two type II bursts, traveling at different velocities, were found. These observations also permit to localize where the interaction occurred (about halfway between the Sun and the Earth). Then, all the pieces of the puzzle finally fit together, reinforcing our interpretation separately in each domain. However, the possibility of a single complex event (as proposed by Yurchyshyn *et al.* [2006] and Reiner *et al.* [2007]) cannot be fully discarded and our proposed scenario, on the basis of compelling evidence, must be further investigated.

[71] Such studies of interacting ejecta will greatly benefit from observations taken with spacecraft in quadrature, as already done for some events [e.g., Rust *et al.*, 2005], and as available with STEREO spacecrafts. This has already been done with a spacecraft configuration far from optimum conditions [Harrison *et al.*, 2008]. On top of providing in situ measurements of physical parameters at three locations (combining ACE with STEREO) and monitoring type II bursts, there are imminent new possibilities of imaging ICMs in their journey through interplanetary space. Then, we will have the opportunity to derive precise constraints on the physical mechanisms of interaction of an ejecta with a faster one, or simply with a fast overtaking solar wind.

[72] **Acknowledgments.** The authors would like to thank to the International Space Science Institute (Bern, Switzerland) for supporting the project The Stages of Sun-Earth Connection, led by C. Cid. C.C., Y.C., and E.S. acknowledge financial support from the Comisión Interministerial de Ciencia y Tecnología of Spain (ESP 2005-07290-C02-01 and ESP 2006-08459). S.D. thanks the Argentinean grants UBACyT X425 and PICT-2007-00856 (ANPCyT). S.D. and C.H.M. thank the Argentinean grants UBACyT X329 and PICT 03-33370 (ANPCyT). H.C., S.D., and C.H.M. are members of the Carrera del Investigador Científico, CONICET. B.S., P.D., and S.P. are doing partly this project in the frame of the European Network SOLAIRE. C.H.M., B.S., and P.D. acknowledge financial support from CNRS (France) and CONICET (Argentina) through their cooperative science program (20326). L.R. and A.N.Z. acknowledge support from the Belgian Federal Science Policy Office through the ESA-PRODEX program. The work at the University of Barcelona was supported by the Ministerio de

Educación y Ciencia under the projects AYA2004-0322 and AYA2007-60724. We are grateful to the ACE-SWEPAM and ACE-MAG teams for the data used for this work. We would also like to thank OmniWeb, from where we downloaded the preliminary *Dst* index. The CME catalog is generated and maintained at the CDAW Data Center by NASA and Catholic University of America in cooperation with the Naval Research Laboratory. We acknowledge the use of Wind WAVES-TNR radio data. The Optical Solar Patrol Network project, previously called ISOON, is a collaboration between the Air Force Research Laboratory Space Vehicles Directorate and the National Solar Observatory. We acknowledge the use of TRACE data. EIT, LASCO, and MDI data are a courtesy of SOHO-EIT, SOHO-LASCO, and SOHO-MDI consortia. SOHO is a project of international cooperation between ESA and NASA. The authors thank S. Hoang for providing clear information on Wind-WAVES and the referees for their helpful suggestions.

[73] Zuyin Pu thanks R. Schwenn and three other reviewers for their assistance in evaluating this paper.

## References

- Atrill, G., M. S. Nakwacki, L. K. Harra, L. van Driel-Gesztelyi, C. H. Mandrini, S. Dasso, and J. Wang (2006), Using the evolution of coronal dimming regions to probe the global magnetic field topology, *Sol. Phys.*, *238*, 117–139, doi:10.1007/s11207-006-0167-5.
- Bothmer, V., and R. Schwenn (1994), Eruptive prominences as sources of magnetic clouds in the solar wind, *Space Sci. Rev.*, *70*, 215–220.
- Bothmer, V., and R. Schwenn (1998), The structure and origin of magnetic clouds in the solar wind, *Ann. Geophys.*, *16*, 1–24.
- Bougeret, J. L., et al. (1995), WAVES: The Radio and Plasma Wave Investigation on the Wind spacecraft, *Space Sci. Rev.*, *71*, 231–263, doi:10.1007/BF00751331.
- Brueckner, G. E., et al. (1995), The Large Angle Spectroscopic Coronagraph (LASCO), *Sol. Phys.*, *162*, 357–402, doi:10.1007/BF00733434.
- Burlaga, L. F. (1988), Magnetic clouds and force-free fields with constant alpha, *J. Geophys. Res.*, *93*, 7217–7224.
- Burlaga, L. F., and N. F. Ness (1993), Large-scale distant heliospheric magnetic field: Voyager 1 and 2 observations from 1986 through 1989, *J. Geophys. Res.*, *98*, 17,451–17,460, doi:10.1029/93JA01475.
- Burlaga, L., E. Sittler, F. Mariani, and R. Schwenn (1981), Magnetic loop behind an interplanetary shock: Voyager, Helios, and IMP 8 observations, *J. Geophys. Res.*, *86*, 6673–6684.
- Burlaga, L. F., R. M. Skoug, C. W. Smith, D. F. Webb, T. H. Zurbuchen, and A. Reinard (2001), Fast ejecta during the ascending phase of solar cycle 23: ACE observations, 1998–1999, *J. Geophys. Res.*, *106*, 20,957–20,977, doi:10.1029/2000JA000214.
- Burlaga, L., D. Berdichevsky, N. Gopalswamy, R. Lepping, and T. Zurbuchen (2003), Merged interaction regions at 1 AU, *J. Geophys. Res.*, *108*(A12), 1425, doi:10.1029/2003JA010088.
- Cane, H. V., and W. C. Erickson (2005), Solar type II radio bursts and IP type II events, *Astrophys. J.*, *623*, 1180–1194, doi:10.1086/428820.
- Cane, H. V., N. R. Sheeley Jr., and R. A. Howard (1987), Energetic interplanetary shocks, radio emission, and coronal mass ejections, *J. Geophys. Res.*, *92*, 9869–9874.
- Chae, J., C. Denker, T. J. Spirock, H. Wang, and P. R. Goode (2000), High-resolution H $\alpha$  observations of proper motion in NOAA 8668: Evidence for filament mass injection by chromospheric reconnection, *Sol. Phys.*, *195*, 333–346.
- Cid, C., M. A. Hidalgo, T. Nieves-Chinchilla, J. Sequeiros, and A. F. Viñas (2002), Plasma and magnetic field inside magnetic clouds: A global study, *Sol. Phys.*, *207*, 187–198.
- Claßen, H. T., and H. Aurass (2002), On the association between type II radio bursts and CMEs, *Astron. Astrophys.*, *384*, 1098–1106, doi:10.1051/0004-6361:20020092.
- Cremades, H., O. C. St. Cyr, and M. L. Kaiser (2007), A tool to improve space weather forecasts: Kilometric radio emissions from Wind/WAVES, *Space Weather*, *5*, S08001, doi:10.1029/2007SW000314.
- Culhane, J. L., and G. L. Siscoe (2007), The Sun Earth workshop: A summary of the outcome, *Sol. Phys.*, *244*, 3–12, doi:10.1007/s11207-007-9037-z.
- Dasso, S., D. Gómez, and C. H. Mandrini (2002), Ring current decay rates of magnetic storms: A statistical study from 1957 to 1998, *J. Geophys. Res.*, *107*(A5), 1059, doi:10.1029/2000JA000430.
- Dasso, S., C. H. Mandrini, P. Démoulin, and C. J. Farrugia (2003), Magnetic helicity analysis of an interplanetary twisted flux tube, *J. Geophys. Res.*, *108*(A10), 1362, doi:10.1029/2003JA009942.
- Dasso, S., C. H. Mandrini, P. Démoulin, M. L. Luoni, and A. M. Gulisano (2005), Large scale MHD properties of interplanetary magnetic clouds, *Adv. Space Res.*, *35*, 711–724, doi:10.1016/j.asr.2005.02.096.
- Dasso, S., C. H. Mandrini, P. Démoulin, and M. L. Luoni (2006), A new model-independent method to compute magnetic helicity in magnetic clouds, *Astron. Astrophys.*, *455*, 349–359, doi:10.1051/0004-6361:20064806.



- Dasso, S., M. Nakwacki, P. Démoulin, and C. H. Mandrini (2007), Progressive transformation of a flux rope to an ICME, *Sol. Phys.*, *244*, 115–137, doi:10.1007/s11207-007-9034-2.
- Delaboudinière, J.-P., et al. (1995), EIT: Extreme-ultraviolet imaging telescope for the SOHO mission, *Sol. Phys.*, *162*, 291–312.
- Démoulin, P. (2008), A review of the quantitative links between CMEs and magnetic clouds, *Ann. Geophys.*, *26*, 3113–3125.
- Démoulin, P., M. S. Nakwacki, S. Dasso, and C. H. Mandrini (2008), Expected in situ velocities from a hierarchical model for expanding interplanetary coronal mass ejections, *Sol. Phys.*, *250*, 347–374, doi:10.1007/s11207-008-9221-9.
- Deng, Y., Y. Lin, B. Schmieder, and O. Engvold (2002), Filament activation and magnetic reconnection, *Sol. Phys.*, *209*, 153–170, doi:10.1023/A:1020924406991.
- Dryer, M., and D. F. Smart (1984), Dynamical models of coronal transients and interplanetary disturbances, *Adv. Space Res.*, *4*(7), 291–301, doi:10.1016/0273-1177(84)90573-8.
- Farrugia, C., and D. Berdichevsky (2004), Evolutionary signatures in complex ejecta and their driven shocks, *Ann. Geophys.*, *22*, 3679–3698.
- Farrugia, C. J., et al. (1999), A uniform-twist magnetic flux rope in the solar wind, in *Solar Wind Nine*, edited by S. Habbal et al., *AIP Conf. Proc.*, vol. 471, pp. 745–748.
- Fry, C. D., W. Sun, C. S. Deehr, M. Dryer, Z. Smith, S.-I. Akasofu, M. Tokumaru, and M. Kojima (2001), Improvements to the HAF solar wind model for space weather predictions, *J. Geophys. Res.*, *106*, 20,985–21,001, doi:10.1029/2000JA000220.
- Gibson, S. E., and Y. Fan (2006), The partial expulsion of a magnetic flux rope, *Astrophys. J.*, *637*, L65–L68, doi:10.1086/500452.
- Gibson, S. E., Y. Fan, T. Török, and B. Kliem (2006), The evolving sigmoid: Evidence for magnetic flux ropes in the corona before, during, and after CMES, *Space Sci. Rev.*, *124*, 131–144, doi:10.1007/s11214-006-9101-2.
- Goldstein, H. (1983), On the field configuration in magnetic clouds, in *Solar Wind Five*, edited by M. Neugebauer, *NASA Conf. Publ.*, CP-2280, pp. 731–733.
- Gopalswamy, N., A. Lara, R. P. Lepping, M. L. Kaiser, D. Berdichevsky, and O. C. St. Cyr (2000), Interplanetary acceleration of coronal mass ejections, *Geophys. Res. Lett.*, *27*, 145–148.
- Gopalswamy, N., A. Lara, M. L. Kaiser, and J.-L. Bougeret (2001a), Near-Sun and near-Earth manifestations of solar eruptions, *J. Geophys. Res.*, *106*, 25,261–25,277, doi:10.1029/2000JA004025.
- Gopalswamy, N., S. Yashiro, M. L. Kaiser, R. A. Howard, and J.-L. Bougeret (2001b), Radio signatures of coronal mass ejection interaction: Coronal mass ejection cannibalism?, *Astrophys. J.*, *548*, L91–L94, doi:10.1086/318939.
- Gopalswamy, N., S. Yashiro, A. Lara, M. L. Kaiser, B. J. Thompson, P. T. Gallagher, and R. A. Howard (2003), Large solar energetic particle events of cycle 23: A global view, *Geophys. Res. Lett.*, *30*(12), 8015, doi:10.1029/2002GL016435.
- Gopalswamy, N., S. Yashiro, S. Krucker, and R. A. Howard (2005), CME interaction and the intensity of solar energetic particle events, in *Coronal and Stellar Mass Ejections*, *IAU Symp.*, vol. 226, edited by K. Dere, J. Wang, and Y. Yan, pp. 367–373, Cambridge Univ. Press, Cambridge, U. K.
- Gulisano, A. M., S. Dasso, C. H. Mandrini, and P. Démoulin (2005), Magnetic clouds: A statistical study of magnetic helicity, *J. Atmos. Sol. Terr. Phys.*, *67*, 1761–1766, doi:10.1016/j.jastp.2005.02.026.
- Gulisano, A. M., S. Dasso, C. H. Mandrini, and P. Démoulin (2007), Estimation of the bias of the minimum variance technique in the determination of magnetic clouds global magnitudes and orientation, *Adv. Space Res.*, *40*, 1881–1890.
- Handy, B. N., et al. (1999), The transition region and coronal explorer, *Sol. Phys.*, *187*, 229–260.
- Harrison, R. A., et al. (2008), First imaging of coronal mass ejections in the heliosphere viewed from outside the Sun Earth line, *Sol. Phys.*, *247*, 171–193, doi:10.1007/s11207-007-9083-6.
- Hidalgo, M. A. (2003), A study of the expansion and distortion of the cross section of magnetic clouds in the interplanetary medium, *J. Geophys. Res.*, *108*(A8), 1320, doi:10.1029/2002JA009818.
- Hidalgo, M. A., C. Cid, A. F. Vinas, and J. Sequeiros (2002a), A non-force-free approach to the topology of magnetic clouds in the solar wind, *J. Geophys. Res.*, *107*(A1), 1002, doi:10.1029/2001JA900100.
- Hidalgo, M. A., T. Nieves-Chinchilla, and C. Cid (2002b), Elliptical cross-section model for the magnetic topology of magnetic clouds, *Geophys. Res. Lett.*, *29*(13), 1637, doi:10.1029/2001GL013875.
- Hoang, S., C. Lacombe, R. J. MacDowall, and G. Thejappa (2007), Radio tracking of the interplanetary coronal mass ejection driven shock crossed by Ulysses on 10 May 2001, *J. Geophys. Res.*, *112*, A09102, doi:10.1029/2006JA011906.
- Hu, Q., and B. U. Ö. Sonnerup (2001), Reconstruction of magnetic flux ropes in the solar wind, *Geophys. Res. Lett.*, *28*, 467–470, doi:10.1029/2000GL012232.
- Hu, Q., and B. U. Ö. Sonnerup (2002), Reconstruction of magnetic clouds in the solar wind: Orientations and configurations, *J. Geophys. Res.*, *107*(A7), 1142, doi:10.1029/2001JA000293.
- Hudson, H. S., and E. W. Cliver (2001), Observing coronal mass ejections without coronagraphs, *J. Geophys. Res.*, *106*, 25,199–25,214.
- Kahler, S. W., and H. S. Hudson (2001), Origin and development of transient coronal holes, *J. Geophys. Res.*, *106*, 29,239–29,248, doi:10.1029/2001JA000127.
- Leblanc, Y., G. A. Dulk, and J.-L. Bougeret (1998), Tracing the electron density from the corona to 1 AU, *Sol. Phys.*, *183*, 165–180.
- Leitner, M., C. J. Farrugia, C. Möstl, K. W. Ogilvie, A. B. Galvin, R. Schwenn, and H. K. Biernat (2007), Consequences of the force-free model of magnetic clouds for their heliospheric evolution, *J. Geophys. Res.*, *112*, A06113, doi:10.1029/2006JA011940.
- Lepping, R. P., L. F. Burlaga, and J. A. Jones (1990), Magnetic field structure of interplanetary magnetic clouds at 1 AU, *J. Geophys. Res.*, *95*, 11,957–11,965.
- Liu, C., J. Lee, V. Yurchyshyn, N. Deng, K.-S. Cho, M. Karlický, and H. Wang (2007), The eruption from a sigmoidal solar active region on 2005 May 13, *Astrophys. J.*, *669*, 1372–1381, doi:10.1086/521644.
- Liu, R., H. R. Gilbert, D. Alexander, and Y. Su (2008), The effect of magnetic reconnection and writhing in a partial filament eruption, *Astrophys. J.*, *680*, 1508–1515, doi:10.1086/587482.
- Liu, Y., J. D. Richardson, and J. W. Belcher (2005), A statistical study of the properties of interplanetary coronal mass ejections from 0.3 to 5.4 AU, *Planet. Space Sci.*, *53*, 3–17, doi:10.1016/j.pss.2004.09.023.
- Liu, Y., J. D. Richardson, J. W. Belcher, J. C. Kasper, and H. A. Elliott (2006a), Thermodynamic structure of collision-dominated expanding plasma: Heating of interplanetary coronal mass ejections, *J. Geophys. Res.*, *111*, A01102, doi:10.1029/2005JA011329.
- Liu, Y., J. D. Richardson, J. W. Belcher, C. Wang, Q. Hu, and J. C. Kasper (2006b), Constraints on the global structure of magnetic clouds: Transverse size and curvature, *J. Geophys. Res.*, *111*, A12S03, doi:10.1029/2006JA011890.
- Liu, Y., J. G. Luhmann, K. E. J. Huttunen, R. P. Lin, S. D. Bale, C. T. Russell, and A. B. Galvin (2008), Reconstruction of the 2007 May 22 magnetic cloud: How much can we trust the flux-rope geometry of CMEs?, *Astrophys. J.*, *677*, L133–L136, doi:10.1086/587839.
- Longcope, D., C. Beveridge, J. Qiu, B. Ravindra, G. Barnes, and S. Dasso (2007), Modeling and measuring the flux reconnected and ejected by the two-ribbon flare/CME event on 7 November 2004, *Sol. Phys.*, *244*, 45–73, doi:10.1007/s11207-007-0330-7.
- Lopez, R. E. (1987), Solar cycle invariance in solar wind proton temperature relationships, *J. Geophys. Res.*, *92*, 11,189–11,194.
- López Fuentes, M. C., P. Démoulin, C. H. Mandrini, and L. van Driel-Gesztelyi (2000), The counter-kink rotation of a non-Hale active region, *Astrophys. J.*, *544*, 540–549, doi:10.1086/317180.
- López Fuentes, M. C., P. Démoulin, C. H. Mandrini, A. A. Pevtsov, and L. van Driel-Gesztelyi (2003), Magnetic twist and writhe of active regions: On the origin of deformed flux tubes, *Astron. Astrophys.*, *397*, 305–318, doi:10.1051/0004-6361:20021487.
- Lundquist, S. (1950), Magnetohydrostatic fields, *Ark. Fys.*, *2*, 361–365.
- Luoni, M. L., C. H. Mandrini, S. Dasso, L. van Driel-Gesztelyi, and P. Démoulin (2005), Tracing magnetic helicity from the solar corona to the interplanetary space, *J. Atmos. Sol. Terr. Phys.*, *67*, 1734–1743, doi:10.1016/j.jastp.2005.07.003.
- Lynch, B. J., T. H. Zurbuchen, L. A. Fisk, and S. K. Antiochos (2003), Internal structure of magnetic clouds: Plasma and composition, *J. Geophys. Res.*, *108*(A6), 1239, doi:10.1029/2002JA009591.
- Maltagliati, L., A. Falchi, and L. Teriaca (2006), RHESSI images and spectra of two small flares, *Sol. Phys.*, *235*, 125–146, doi:10.1007/s11207-006-1977-1.
- Mandrini, C. H., S. Pohjolainen, S. Dasso, L. M. Green, P. Démoulin, L. van Driel-Gesztelyi, C. Copperwheat, and C. Foley (2005), Interplanetary flux rope ejected from an X-ray bright point: The smallest magnetic cloud source-region ever observed, *Astron. Astrophys.*, *434*, 725–740, doi:10.1051/0004-6361:20041079.
- Manoharan, P. K. (2006), Evolution of coronal mass ejections in the inner heliosphere: A study using white-light and scintillation images, *Sol. Phys.*, *235*, 345–368, doi:10.1007/s11207-006-0100-y.
- Martin, S. F., and H. E. Ramsey (1972), Early recognition of major solar flares in H-alpha, in *Solar Activity Observations and Predictions*, edited by P. S. McIntosh and M. Dryer, pp. 371–387, MIT Press, Cambridge, Mass.
- Marubashi, K. (1997), Interplanetary magnetic flux ropes and solar filaments, in *Coronal Mass Ejections*, *Geophys. Monogr. Ser.*, vol. 99, edited by N. Crooker, J. A. Joselyn, and J. Feynman, pp. 147–156, AGU, Washington, D. C.

- McComas, D. J., S. J. Bame, P. Barker, W. C. Feldman, J. L. Phillips, P. Riley, and J. W. Griffee (1998), Solar Wind Electron Proton Alpha Monitor (SWEPAM) for the advanced composition explorer, *Space Sci. Rev.*, *86*, 563–612, doi:10.1023/A:1005040232597.
- Moore, R. L., A. C. Sterling, H. S. Hudson, and J. R. Lemen (2001), Onset of the magnetic explosion in solar flares and coronal mass ejections, *Astrophys. J.*, *552*, 833–848, doi:10.1086/320559.
- Nakwacki, M. S., S. Dasso, C. H. Mandrini, and P. Démoulin (2005), Helicity analysis for expanding magnetic clouds: A case study, in *Connecting Sun and Heliosphere: Proceedings of Solar Wind 11/SOHO 16*, edited by B. Fleck and T. H. Zurbuchen, *Eur. Space Agency Spec. Publ., ESA-SP 592*, pp. 629–632.
- Nakwacki, M. S., S. Dasso, C. H. Mandrini, and P. Démoulin (2008), Analysis of large scale MHD quantities in expanding magnetic clouds, *J. Atmos. Sol. Terr. Phys.*, *70*, 1318–1326.
- Pick, M. (1999), Radio and coronagraph observations: Shocks, coronal mass ejections and particle acceleration, in *Solar Physics With Radio Observations: Proceedings of the Nobeyama Symposium*, edited by T. S. Bastian, N. Gopalswamy, and K. Shibasaki, *Rep. 479*, pp. 187–198, Nobeyama Radio Obs., Minamimaki, Japan.
- Pizzo, V. J. (1994), Global, quasi-steady dynamics of the distant solar wind: 1. Origin of north-south flows in the outer heliosphere, *J. Geophys. Res.*, *99*, 4173–4183.
- Reiner, M. J., M. L. Kaiser, J. Fainberg, and R. G. Stone (1998), A new method for studying remote type II radio emissions from coronal mass ejection-driven shocks, *J. Geophys. Res.*, *103*, 29,651–29,664, doi:10.1029/98JA02614.
- Reiner, M. J., M. L. Kaiser, and J.-L. Bougeret (2007), Coronal and interplanetary propagation of CME/shocks from radio, in situ and white-light observations, *Astrophys. J.*, *663*, 1369–1385, doi:10.1086/518683.
- Riley, P., et al. (2004), Fitting flux ropes to a global MHD solution: A comparison of techniques, *J. Atmos. Sol. Terr. Phys.*, *66*, 1321–1331, doi:10.1016/j.jastp.2004.03.019.
- Rodriguez, L., et al. (2008), Magnetic clouds seen at different locations in the heliosphere, *Ann. Geophys.*, *26*, 213–229.
- Rust, D. M., B. J. Anderson, M. D. Andrews, M. H. Acuña, C. T. Russell, P. W. Schuck, and T. Mulligan (2005), Comparison of interplanetary disturbances at the NEAR spacecraft with coronal mass ejections at the Sun, *Astrophys. J.*, *621*, 524–536, doi:10.1086/427401.
- Ruzmaikin, A., S. Martin, and Q. Hu (2003), Signs of magnetic helicity in interplanetary coronal mass ejections and associated prominences: Case study, *J. Geophys. Res.*, *108*(A2), 1096, doi:10.1029/2002JA009588.
- Saito, K., A. I. Poland, and R. H. Munro (1977), A study of the background corona near solar minimum, *Sol. Phys.*, *55*, 121–134.
- Scherrer, P. H., et al. (1995), The solar oscillations investigation: Michelson Doppler Imager, *Sol. Phys.*, *162*, 129–188.
- Schmieder, B., G. Aulanier, P. Mein, and A. López Ariste (2006), Evolving photospheric flux concentrations and filament dynamic changes, *Sol. Phys.*, *238*, 245–259, doi:10.1007/s11207-006-0252-9.
- Smith, C. W., J. L'Heureux, N. F. Ness, M. H. Acuña, L. F. Burlaga, and J. Scheifele (1998), The ACE magnetic fields experiment, *Space Sci. Rev.*, *86*, 613–632, doi:10.1023/A:1005092216668.
- Smith, Z., and M. Dryer (1995), The interplanetary shock propagation model: A model for predicting solar-flare-caused geomagnetic sudden impulses based on the 2 1/2 D MHD numerical simulation results from the interplanetary global model (2D IGM), *Tech. Memo. ERL/SEL-89*, NOAA, Washington, D. C.
- Sonnerup, B. U. Ö., and L. J. Cahill Jr. (1967), Magnetopause structure and attitude from Explorer 12 observations, *J. Geophys. Res.*, *72*, 171–183.
- Tang, F. (1986), The two types of flare-associated filament eruptions, *Sol. Phys.*, *105*, 399–412.
- Tripathi, D., V. Bothmer, and H. Cremades (2004), The basic characteristics of EUV post-eruptive arcades and their role as tracers of coronal mass ejection source regions, *Astron. Astrophys.*, *422*, 337–349, doi:10.1051/0004-6361:20035815.
- Vandas, M., and E. P. Romashets (2002), Magnetic field in an elliptic flux rope: A generalization of the Lundquist solution, in *Solar Variability: From Core to Outer Frontiers*, edited by A. Wilson, *Eur. Space Agency Spec. Publ., ESA-SP 506*, pp. 217–220.
- Vandas, M., and E. P. Romashets (2003), Force-free field with constant alpha in an oblate cylinder: A generalization of the Lundquist solution, *Astron. Astrophys.*, *398*, 801–807.
- Vourlidas, A. (2006), Detections of CME-driven shocks with LASCO, in *Proceedings of SOHO-17: 10 Years of SOHO and Beyond*, edited by H. Lacoste, *Eur. Space Agency Spec. Publ., ESA-SP 617*, pp. 23.1–23.4.
- Vourlidas, A., S. T. Wu, A. H. Wang, P. Subramanian, and R. A. Howard (2003), Direct detection of a coronal mass ejection-associated shock in large angle and spectrometric coronagraph experiment white-light images, *Astrophys. J.*, *598*, 1392–1402, doi:10.1086/379098.
- Wang, A. H., S. T. Wu, and N. Gopalswamy (2005), Magnetohydrodynamic analysis of January 20, 2001, CME-CME interaction event, in *Particle Acceleration in Astrophysical Plasmas: Geospace and Beyond*, *Geophys. Monogr. Ser.*, vol. 156, edited by D. Gallagher et al., pp. 185–195, AGU, Washington, D. C.
- Wang, Y. M., S. Wang, and P. Z. Ye (2002), Multiple magnetic clouds in interplanetary space, *Sol. Phys.*, *211*, 333–344.
- Wang, Y. M., P. Z. Ye, and S. Wang (2003), Multiple magnetic clouds: Several examples during March–April 2001, *J. Geophys. Res.*, *108*(A10), 1370, doi:10.1029/2003JA009850.
- Webb, D. F., R. P. Lepping, L. F. Burlaga, C. E. DeForest, D. E. Larson, S. F. Martin, S. P. Plunkett, and D. M. Rust (2000), The origin and development of the May 1997 magnetic cloud, *J. Geophys. Res.*, *105*, 27,251–27,260, doi:10.1029/2000JA000021.
- Wood, P., and P. Martens (2003), Measurements of flux cancellation during filament formation, *Sol. Phys.*, *218*, 123–135, doi:10.1023/B:SOLA.0000013027.52104.c6.
- Wu, S. T., W. P. Guo, D. J. Michels, and L. F. Burlaga (1999), MHD description of the dynamical relationships between a flux rope, streamer, coronal mass ejection, and magnetic cloud: An analysis of the January 1997 Sun-Earth connection event, *J. Geophys. Res.*, *104*, 14,789–14,802, doi:10.1029/1999JA900099.
- Wu, S. T., T. X. Zhang, M. Dryer, X. S. Feng, and A. Tan (2005), The role of magnetic reconnection in CME acceleration, *Space Sci. Rev.*, *121*, 33–47, doi:10.1007/s11214-006-6159-9.
- Xie, H., N. Gopalswamy, P. K. Manoharan, A. Lara, S. Yashiro, and S. Lepri (2006), Long-lived geomagnetic storms and coronal mass ejections, *J. Geophys. Res.*, *111*, A01103, doi:10.1029/2005JA011287.
- Xiong, M., H. Zheng, S. T. Wu, Y. Wang, and S. Wang (2007), Magneto-hydrodynamic simulation of the interaction between two interplanetary magnetic clouds and its consequent geoeffectiveness, *J. Geophys. Res.*, *112*, A11103, doi:10.1029/2007JA012320.
- Yashiro, S., N. Gopalswamy, S. Akiyama, G. Michalek, and R. A. Howard (2005), Visibility of coronal mass ejections as a function of flare location and intensity, *J. Geophys. Res.*, *110*, A12S05, doi:10.1029/2005JA011151.
- Yurchyshyn, V. B., H. Wang, P. R. Goode, and Y. Deng (2001), Orientation of the magnetic fields in interplanetary flux ropes and solar filaments, *Astrophys. J.*, *563*, 381–388.
- Yurchyshyn, V., Q. Hu, and V. Abramenko (2005), Structure of magnetic fields in NOAA active regions 0486 and 0501 and in the associated interplanetary ejecta, *Space Weather*, *3*, S08C02, doi:10.1029/2004SW000124.
- Yurchyshyn, V., C. Liu, V. Abramenko, and J. Krall (2006), The May 13, 2005 eruption: Observations, data analysis and interpretation, *Sol. Phys.*, *239*, 317–335, doi:10.1007/s11207-006-0177-3.
- Zhang, J., J. Wang, Y. Deng, and D. Wu (2001), Magnetic flux cancellation associated with the major solar event on 2000 July 14, *Astrophys. J.*, *548*, L99–L102, doi:10.1086/318934.

A. Aran, Departament d'Astronomia i Meteorologia, Universitat de Barcelona, Martí i Franquès 1, E-08028 Barcelona, Spain.

Y. Cerrato, C. Cid, and E. Saiz, Departamento de Física, Universidad de Alcalá, E-28871 Alcalá de Henares, Spain.

H. Cremades, Facultad Regional Mendoza, Universidad Tecnológica Nacional, M5502AJE Ciudad Mendoza, Argentina.

S. Dasso and C. H. Mandrini, Instituto de Astronomía y Física del Espacio, CONICET-Universidad de Buenos Aires, 1428 Buenos Aires, Argentina. (dasso@df.uba.ar)

P. Démoulin and B. Schmieder, Observatoire de Paris, LESIA, UMR8109, CNRS, F-92195 Meudon, France.

M. Menvielle, LATMOS, IPSL, CNRS, 4 Avenue de Neptune, F-94100 Saint Maur, France.

S. Poedts, Centre for Plasma Astrophysics, Department of Mathematics, Katholieke Universiteit Leuven, B-3001 Leuven, Belgium.

L. Rodriguez and A. N. Zhukov, Solar-Terrestrial Center of Excellence, SIDC, Royal Observatory of Belgium, B-1180 Brussels, Belgium.