



HAL
open science

Accuracy Analysis of 3-DOF Planar Parallel Robots

Sébastien Briot, Ilian Bonev

► **To cite this version:**

Sébastien Briot, Ilian Bonev. Accuracy Analysis of 3-DOF Planar Parallel Robots. Mechanism and Machine Theory, 2008, 43 (4), pp.445-458. hal-00362510

HAL Id: hal-00362510

<https://hal.science/hal-00362510v1>

Submitted on 25 Jun 2019

HAL is a multi-disciplinary open access archive for the deposit and dissemination of scientific research documents, whether they are published or not. The documents may come from teaching and research institutions in France or abroad, or from public or private research centers.

L'archive ouverte pluridisciplinaire **HAL**, est destinée au dépôt et à la diffusion de documents scientifiques de niveau recherche, publiés ou non, émanant des établissements d'enseignement et de recherche français ou étrangers, des laboratoires publics ou privés.

Accuracy Analysis of 3-DOF Planar Parallel Robots

Sébastien Briot

*Department of Mechanical Engineering and Control Systems,
National Institute of Applied Sciences (INSA), Rennes, France*

Ilian A. Bonev

*Department of Automated Manufacturing Engineering,
École de technologie supérieure (ÉTS), Montreal, Canada*

e-mail: ilian.bonev@etsmtl.ca

ABSTRACT

Three-degree-of-freedom planar parallel robots are increasingly being used in applications where precision is of the utmost importance. Clearly, methods for evaluating the accuracy of these robots are therefore needed. The accuracy of well designed, manufactured, and calibrated parallel robots depends mostly on the input errors (sensor and control errors). Dexterity and other similar performance indices have often been used to evaluate indirectly the influence of input errors. However, industry needs a precise knowledge of the maximum orientation and position output errors at a given nominal configuration. An interval analysis method that can be adapted for this purpose has been proposed in the literature, but gives no kinematic insight into the problem of optimal design. In this paper, a simpler method is proposed based on a detailed error analysis of 3-DOF planar parallel robots that brings valuable understanding of the problem of error amplification.

Keywords: parallel mechanisms, accuracy, dexterity, performance evaluation, error analysis.

I. INTRODUCTION

Parallel robots are increasingly being used for precision positioning, and a number of them are used as 3-degree-of-freedom (DOF) planar alignment stages. Clearly, in such industrial applications, accuracy is of the utmost importance. Therefore, simple and fast methods for computing the accuracy of a given robot design are needed in order to use them in design optimization procedures that look for maximum accuracy.

Errors in the position and orientation of a parallel robot are due to several factors:

- manufacturing errors, which can however be taken into account through calibration;
- backlash, which can be eliminated through proper choice of mechanical components;
- compliance, which can also be eliminated through the use of more rigid structures (though this would increase inertia and decrease operating speed);
- active-joint errors, coming from the finite resolution of the encoders, sensor errors, and control errors.

Therefore, as pointed out by Merlet [1], active-joint errors (*input errors*) are the most significant source of errors in a properly designed, manufactured, and calibrated parallel robot. In this paper, we address the problem of computing the accuracy of a parallel robot in the presence of active-joint errors only. In the balance of the paper, the term “accuracy” will therefore refer to the position and orientation errors of a parallel robot that is subjected to active-joint errors only.

The classical approach consists in considering the first order approximation that maps the input error to the output error:

$$\delta \mathbf{p} = \mathbf{J} \delta \mathbf{q} \quad (1)$$

where $\delta \mathbf{q}$ represents the vector of the active-joint (input) errors, $\delta \mathbf{p}$ the vector of output errors and \mathbf{J} is the Jacobian matrix of the robot. However, this method will give only an approximation of the output maximum error. Indeed, as we will prove in this paper, given a nominal configuration and some uncertainty ranges for the active-joint variables, a local maximum position error and a local maximum orientation error not only occur at different sets of active-joint variables in general, but these active-joint variables are not necessarily all at the limits of their uncertainty ranges.

Several performance indices have been developed and used to roughly evaluate the accuracy of serial and parallel robots. A recent study [2] reviewed most of these performance indices and discussed their inconsistencies when applied to parallel robots with translational and rotational degrees of freedom. The most common performance indices used to indirectly optimize the accuracy of parallel robots are the dexterity index [3], the condition numbers, and the global conditioning index [4]. However, in a recent study of the accuracy of a class of 3-DOF planar parallel robots [5], it was demonstrated that dexterity has little to do with robot accuracy, as we define it.

Obviously, the best accuracy measure for an industrial parallel robot would be the maximum position and maximum orientation errors over a given portion of the workspace [1,5] or at a given nominal configuration, given actuator inaccuracies. A general method based on interval analysis for calculating close approximations of the maximum output error over a given portion of the workspace was proposed recently in [1]. Obviously, the maximum output error over a given portion of the workspace is the most important information for a designer. However, this method is relatively difficult to implement, gives no information on the evolution of the accuracy of the manipulator

within its workspace and gives no kinematic insight into the problem of optimal design. In contrast, a very simple geometric method for computing the exact value of the accuracy of 3-DOF 3-PRP planar parallel robots was described in [5] (in this paper, P and R stand for passive prismatic and revolute joints, respectively, while \underline{P} and \underline{R} stand for actuated prismatic and revolute joints, respectively). This method proposes to replace the existing dexterity maps by maximum position error maps and maximum orientation error maps. While this method covers three of the most promising designs for precision parallel robots (one of which is commercialized and the other two built into laboratory prototypes), it does not always work for other 3-DOF planar parallel robots.

This paper generalizes the method proposed in [5] by following a detailed mathematical proof which gives us important insight into the accuracy of planar parallel robots. The present study considers only 3-DOF three-legged planar parallel robots with prismatic and/or revolute joints, one actuated joint per leg, and at most one passive prismatic joint in a leg. The method is illustrated on two practical designs:

1. A 3-RPR planar parallel robot. This robot is the planar projection of the PAMINSA robot [6] and the design parameters are those of the prototype manufactured at INSA of Rennes, France.
2. A planar 3-PRR robot [7]. A precision parallel robot based on this design has been developed in the Technical University of Braunschweig, in Germany [8].

The remainder of this paper is organized as follows. Section II briefly outlines the mathematical theorems used in this paper. Section III presents the method used for the analysis of the orientation and position errors. Finally, Section IV covers several numerical examples, and conclusions are given in the last section.

II. MATHEMATICAL BACKGROUND

Analyzing the (local) maximum position error and the (local) maximum orientation error of a parallel robot, induced by bounded errors in the active-joint variables, is basically studying, on a set of closed intervals, the maxima of functions ΔX and $\Delta\phi$, defined as:

$$\Delta X = \sqrt{(x - x_0)^2 + (y - y_0)^2}, \quad (2)$$

$$\Delta\phi = \sqrt{(\phi - \phi_0)^2}, \quad (3)$$

where x_0 , y_0 and ϕ_0 are the Cartesian coordinates corresponding to the *nominal* (desired) platform *pose* (position and orientation) of the studied parallel robot, and x , y and ϕ are the actual platform coordinates.

In the case of a 3-DOF planar fully-parallel robot, ΔX and $\Delta\phi$ are functions of three variables: the active-joint variables of the robot (the *inputs*), which will be denoted by q_i (in this paper, $i = 1, 2, 3$). Thus, we have to find the maxima of ΔX and $\Delta\phi$ on the set of intervals $q_i \in [q_{i0} - \varepsilon, q_{i0} + \varepsilon]$, where q_{i0} are the active-joint variables corresponding to the nominal pose (x_0, y_0, ϕ_0) of the platform (in the selected *working mode*, i.e., the selected solution to the inverse kinematics) and ε is the error bound on the active-joint variables (Fig. 1).

To simplify our error analysis, we will make the practical assumption that the nominal configuration is sufficiently far from (Type 1 and Type 2) singularities. Type 1 singularities [9] are configurations where a parallel robot loses its desired functionality – it loses one or more degrees of freedom. These are the internal and the external boundaries of workspace. For this reason, the usable workspace of an industrial parallel robot will be away from these singularities. Similarly, Type 2 singularities [9] are

another kind of configurations where a parallel robot loses its desired functionality – this time it loses control of the mobile platform. Furthermore, near these configurations, the output error increases exponentially. For these reasons, industrial parallel robots are designed to exclude such singularities. Therefore, we will obviously perform our error analysis only for configurations that are sufficiently far from singularities, i.e., for nominal configurations from which the robot cannot enter into singularity while the active-joint variables stay within their error-bounded intervals.

Once we have made this practical assumption, we address the problem of finding the global maxima of ΔX and $\Delta\phi$. It is well known that the maximum of a continuous multivariable function, f , over a given set of intervals can be found by analysing the Hessian matrix, \mathbf{H} :

$$\mathbf{H} = \begin{bmatrix} \frac{\partial^2 f}{\partial q_1^2} & \frac{\partial^2 f}{\partial q_1 \partial q_2} & \frac{\partial^2 f}{\partial q_1 \partial q_3} \\ & \frac{\partial^2 f}{\partial q_2^2} & \frac{\partial^2 f}{\partial q_2 \partial q_3} \\ \text{sym} & & \frac{\partial^2 f}{\partial q_3^2} \end{bmatrix}. \quad (4)$$

Using this Hessian matrix, the set of variables (q_{1m}, q_{2m}, q_{3m}) , where $q_{im} \in [q_{i0} - \varepsilon, q_{i0} + \varepsilon]$, leads to a maximum of f if $\frac{\partial f}{\partial q_i}(q_{1m}, q_{2m}, q_{3m}) = 0$ and \mathbf{H} is negative definite. If such a point exists (q_{1m}, q_{2m}, q_{3m}) , we will call it *a maximum of the first kind*.

The global maximum of f could also be on the faces of the input error bounding box shown in Fig. 1. This time, we have to study the maxima of six functions of two variables each, defined as:

$$\begin{aligned}
g_1: (q_2, q_3) &\rightarrow f(q_{10} + \varepsilon, q_2, q_3), & g_4: (q_1, q_3) &\rightarrow f(q_1, q_{20} - \varepsilon, q_3), \\
g_2: (q_2, q_3) &\rightarrow f(q_{10} - \varepsilon, q_2, q_3), & g_5: (q_1, q_2) &\rightarrow f(q_1, q_2, q_{30} + \varepsilon), \\
g_3: (q_1, q_3) &\rightarrow f(q_1, q_{20} + \varepsilon, q_3), & g_6: (q_1, q_2) &\rightarrow f(q_1, q_2, q_{30} - \varepsilon).
\end{aligned}$$

If such points exist, we will call them *maxima of the second kind*.

The global maximum of f could also be on the edges of the input error bounding box. This time, we have to study the maxima of twelve univariate functions:

$$\begin{aligned}
h_1: q_1 &\rightarrow f(q_1, q_{20} + \varepsilon, q_{30} + \varepsilon), & h_7: q_2 &\rightarrow f(q_{10} + \varepsilon, q_2, q_{30} - \varepsilon), \\
h_2: q_1 &\rightarrow f(q_1, q_{20} + \varepsilon, q_{30} - \varepsilon), & h_8: q_2 &\rightarrow f(q_{10} - \varepsilon, q_2, q_{30} - \varepsilon), \\
h_3: q_1 &\rightarrow f(q_1, q_{20} - \varepsilon, q_{30} + \varepsilon), & h_9: q_3 &\rightarrow f(q_{10} + \varepsilon, q_{20} + \varepsilon, q_3), \\
h_4: q_1 &\rightarrow f(q_1, q_{20} - \varepsilon, q_{30} - \varepsilon), & h_{10}: q_3 &\rightarrow f(q_{10} + \varepsilon, q_{20} - \varepsilon, q_3), \\
h_5: q_2 &\rightarrow f(q_{10} + \varepsilon, q_2, q_{30} + \varepsilon), & h_{11}: q_3 &\rightarrow f(q_{10} - \varepsilon, q_{20} + \varepsilon, q_3), \\
h_6: q_2 &\rightarrow f(q_{10} - \varepsilon, q_2, q_{30} + \varepsilon), & h_{12}: q_3 &\rightarrow f(q_{10} - \varepsilon, q_{20} - \varepsilon, q_3).
\end{aligned}$$

If such points exist, we will call them *maxima of the third kind*.

Finally, the global maximum of f could also be on one of the eight corners of the input error bounding box. These eight points will be referred to as *extrema of the fourth kind*.

Finding the global maxima of functions ΔX and $\Delta \phi$ is equivalent to finding the maxima of functions ΔX^2 and $\Delta \phi^2$. In the next section, we will study the extrema of the functions ΔX^2 and $\Delta \phi^2$.

III. ANALYSIS OF THE ORIENTATION AND POSITION ERRORS

A. Maximum Orientation Error

The partial derivatives of $\Delta \phi^2$ are given as

$$\frac{\partial(\Delta\phi^2)}{\partial q_i} = 2 \frac{\partial\phi}{\partial q_i} (\phi - \phi_0). \quad (5)$$

These derivatives are equal to zero if $\partial\phi/\partial q_i = 0$ or if $\phi - \phi_0 = 0$. Obviously, however, a maximum can exist only if $\partial\phi/\partial q_i = 0$.

For a 3-DOF planar parallel robot, two different situations correspond to the condition $\partial\phi/\partial q_i = 0$:

- The robot is at a Type 1 singularity. However, we already assumed that the robot cannot enter a Type 1 singularity within the interval studied.
- The twist of the mobile platform, when legs j and k ($j, k = 1, 2, 3, i \neq j \neq k$) are fixed, is a pure translation. Figure 2 represents the mobile platform of a robot linked to three actuated legs, through revolute joints (these could be prismatic joints as well). Each leg applies a wrench \mathbf{R}_i on the mobile platform, whose center is denoted by P . The intersection point O_3 of the wrenches \mathbf{R}_1 and \mathbf{R}_2 represents the instantaneous rotation centre of the mobile platform when actuators 1 and 2 are fixed and the third actuator is moving. Thus, if $\mathbf{X} = [x, y]^T$, vector $\partial\mathbf{X}/\partial q_3$, defined as $\partial\mathbf{X}/\partial q_3 = [\partial x/\partial q_3 \quad \partial y/\partial q_3]^T$, represents the instantaneous displacement of the platform under the action of the third actuator only, where. For the twist of the platform to be a pure translation, wrenches \mathbf{R}_1 and \mathbf{R}_2 need to be parallel (Fig. 3). When such a configuration is inside the interval studied, the corresponding orientation error is a local extremum.

Therefore, a maximum of the first kind exists if and only if $\mathbf{R}_1 // \mathbf{R}_2$ and $\mathbf{R}_2 // \mathbf{R}_3$ and $\mathbf{R}_1 // \mathbf{R}_3$ (Fig. 4). However, such a configuration corresponds to a Type 2

singularity, and we already assumed that there are no Type 2 singularities for the set of intervals studied.

A maximum of the second kind exists if $\mathbf{R}_i // \mathbf{R}_j$ and $\mathbf{R}_i // \mathbf{R}_k$ ($i, j, k = 1, 2, 3$), $i \neq j \neq k$. This, however, is equivalent to the previous case and is therefore impossible.

A maximum of the third kind exists if $\mathbf{R}_i // \mathbf{R}_j$ ($i, j = 1, 2, 3$). If such a configuration is possible, it has to be tested to determine its nature.

Finally, extrema of the fourth kind will always exist and should always be tested.

Thus, in the analysis of the orientation error, only maxima of the third and fourth kind might appear. Maxima of the third kind are very difficult to compute analytically even for simple 3-DOF planar parallel robots. Therefore, we are confident that the best way to proceed, in areas of the workspace where one feels that the robot might be in configurations in which two wrenches are parallel and this could be a local maximum (rather than a minimum) for the orientation angle, is to discretize the edges of the input error bounding box (Fig. 1), compute $\Delta\phi$ at each discrete point, and retain the maximum value. Obviously, such a discretization will be somewhat time-consuming and less accurate, but our approach will still produce much more meaningful results than a simple dexterity plot. Note, however, that in most cases it will be obvious that such configurations cannot occur. For these cases, one must only compute $\Delta\phi$ at each corner of the input error bounding box and retain the maximal value. This will be the exact local orientation error.

B. *Maximum Position Error*

The partial derivatives of ΔX^2 are given as

$$\frac{\partial(\Delta X^2)}{\partial q_i} = 2 \left(\frac{\partial \mathbf{X}}{\partial q_i} \right)^T (\mathbf{X} - \mathbf{X}_0), \quad (6)$$

These derivatives are equal to zero if $\partial \mathbf{X} / \partial q_i = 0$, if $\partial \mathbf{X} / \partial q_i$ is orthogonal to $\mathbf{X} - \mathbf{X}_0$, or if $\mathbf{X} - \mathbf{X}_0 = 0$. Obviously, however, the condition $\mathbf{X} - \mathbf{X}_0 = 0$ corresponds to a global minimum, and will therefore be ignored.

For a 3-DOF planar parallel robot, two different situations correspond to the condition $\partial \mathbf{X} / \partial q_i = 0$:

- The robot is at a Type 1 singularity. However, we already assumed that the robot cannot enter in a Type 1 singularity within the interval of interest.
- The twist of the mobile platform, when legs j and k ($j, k = 1, 2, 3, i \neq j \neq k$) are fixed, is a pure rotation. When the twist of the platform is a pure rotation, this means that the intersection point O_3 of wrenches \mathbf{R}_1 and \mathbf{R}_2 coincides with point P (Fig. 5). When such a configuration is inside the interval of interest, the corresponding position error is a local extremum.

Next, we will show geometrically that a global maximum of ΔX^2 can exist only on the edges (including the corners) of the input error bounding box. Indeed, finding this maximum is equivalent to finding the point from the *uncertainly zone* of the platform center that is farthest from the nominal position of the mobile platform. This uncertainty zone is basically the maximal workspace of the robot (i.e., the set of all attainable positions of the platform centre) obtained by sweeping the active-joint variables in their corresponding intervals, $q_i \in [q_{i0} - \varepsilon, q_{i0} + \varepsilon]$. Obviously, the point that we are looking for will be on the boundary of this maximal workspace.

A geometric algorithm for computing this boundary is presented in [10], but we will not discuss it here in detail. We only need to mention that this boundary is

composed of segments of curves that correspond to configurations in which at least one leg is at a Type 1 singularity (which we exclude from our study) or at an active-joint limit (we also consider that there are no limits on the passive joints). A segment for which only one active-joint is at a limit is a line segment (in the case of a passive prismatic joint) or a circular arc whose radius depends on the leg lengths and platform size (in the case of two passive revolute joints).

In error analysis, the intervals of interest are extremely small compared to the overall dimensions of the robot, and so is the uncertainty zone for a given nominal configuration. This means that, in practice, the radius of a circular arc that belongs to the boundary of the uncertainty zone will be much greater than the maximum position error. Therefore, for such a tiny arc of large radius, the point that is farthest from the nominal position will be at one of the two extremities of the arc. This point will therefore correspond to at least two active-joint variables at a limit.

Thus, thanks to this geometric analysis, we were able to demonstrate that the maximum position error cannot be elsewhere but on the edges of the input error bounding box. Next, a deeper analysis will guarantee, to a certain precision, that in some cases, the maximum position error occurs only at one of the eight corners of the input error bounding box.

For legs j and k ($j, k = 1, 2, 3, i \neq j \neq k$), the condition for having a maximum of the third kind on the interval $[q_{i0} - \varepsilon, q_{i0} + \varepsilon]$ is that:

- (a) $\partial \mathbf{X} / \partial q_i = 0$;
- (b) $\partial \mathbf{X} / \partial q_i$ is orthogonal to $\mathbf{X} - \mathbf{X}_0$.

Condition (a) has already been discussed. Such a configuration has to be examined in order to determine whether it corresponds to a global maximum or not.

However, it is very difficult to analytically identify such configurations. Therefore, once again, we are confident that the best way to proceed, in areas of the workspace where one feels that the robot might be in configurations in which two leg wrenches intersect at the center of the mobile platform, is to discretize the edges of the input error bounding box, compute ΔX at each discrete point, and retain the maximum value. Note, however, that in most cases it will be obvious that such configurations cannot occur. For these cases, one must only consider condition (b).

Condition (b) is even more complicated to analyze. The partial derivative $\partial \mathbf{X} / \partial q_i$ represents the first two elements of the i th column of the Jacobian matrix of the robot. If the direction of vectors $\partial \mathbf{X} / \partial q_i$ is close to a constant in the interval studied (which is far from Type 2 singularities), then it is possible to say that on this interval, the displacement of the robot, when legs j and k are fixed, is close to a straight line. This can be verified approximately by computing vector $\partial \mathbf{X} / \partial q_i$ at each corner of the input-error bounding box. If the variation of the direction of the vector $\partial \mathbf{X} / \partial q_i$ is inferior to a given value (for example 1 degree), then one can consider that the direction of $\partial \mathbf{X} / \partial q_i$ does not change in the interval studied.

Let B be a point for which $\partial \mathbf{X} / \partial q_i$ is orthogonal to $\mathbf{X} - \mathbf{X}_0$ (Fig. 6). Vector \mathbf{u} defines the direction of the allowed displacement at point B . If we represent a line passing through point B , whose direction is defined by vector \mathbf{u} , this line defines the locus for the displacement of the platform around point B when only the i th actuator is moving. If we represent two points A and C located on this line around B , the direction of vector \mathbf{u} defines the direction of the displacement when the i th leg is actuated in the

positive sense of q_i . Thus, point A represents the point before passing point B and point C the point after when the i th actuator is moving.

It is so possible to determine the signs of the product $(\partial\mathbf{X}/\partial q_i)^T(\mathbf{X}-\mathbf{X}_0)$ at points A and C . At point A it is negative and at point C it is positive. This shows that point B is a local minimum of ΔX^2 . Thus, such a configuration does not represent a maximum of the third kind.

Of course, there are exceptions to our rule of thumb, but they are extremely rare and occur only for some particular mechanism designs. For example, consider a 3-RPR planar parallel robot. The curve described by the platform centre, when two of the actuators are blocked, is an ellipse. Therefore, if one takes a segment at whose endpoints the slope is nearly the same, this segment is clearly close to a line. However, if a 3-RRR planar parallel robot is considered, the curve is a sextic. Theoretically, it is possible to have a segment at whose endpoints the slope is nearly the same, yet the segment is far from linear (e.g., there is a cusp point, or a tiny loop). However, we consider that such situations are extremely unlikely to happen, and even if they do, they will occur for only certain configurations and not throughout the workspace. Therefore, for simplicity, we will exclude this small possibility from our study.

C. Conclusions

To sum up, the proposed method is very simple to implement and, for most practical 3-DOF planar robot designs, fast and accurate. For most designs, at each nominal configuration, we have to compute the direct kinematics for eight sets of active-joint variables, which can either be done analytically, or using a very accurate numerical method (since we are far from singularities). Thus, for computing the local maximum orientation error and local maximum position error of a 3-DOF planar

parallel robot for a given nominal configuration, one should, at worst, compute the direct kinematics at only $12n$ points (using the algorithms presented in [11]), where n is the number of discretization points on each of the edges of the input error bounding box. As already mentioned, such a discretization is unfortunately somewhat time-consuming and might lead to a certain computational inaccuracy. However, relatively simple analysis can show that for a given robot design, only the eight vertices of the input error bounding box should be verified. Namely, for the computation of the maximum orientation error, this is the case if no two wrenches can be parallel and lead to a local maximum, and for the computation of the maximum position error, this is the case if no two wrenches can intersect at the platform center and the variation of the direction of each vector $\partial\mathbf{X}/\partial q_i$ is very small.

IV. EXAMPLES

A. A 3-DOF 3-RPR Planar Parallel Robot

In this part, we will study the accuracy of a 3-DOF 3-RPR planar parallel robot (Fig. 7). This robot is designed as follows:

- the actuators are mounted on the base and are located at revolute joints A_i ;
- triangles $A_1A_2A_3$ and $B_1B_2B_3$ are equilateral;
- the centre O of frame Oxy is located at the geometric center of triangle $A_1A_2A_3$;
- $OA_i = 0.35$ m and $PB_i = 0.1$ m
- the error bound on the active-joint variables is $\varepsilon = 2 \cdot 10^{-4}$ rad.

The Type 2 singularities of this robot are well known [12–14]. They appear when the robot is in such configuration that:

- the rotation angle is $\phi = \pm \cos^{-1}(PB_1/OA_1) \approx \pm 73.4^\circ$;

- the platform centre P is located on a circle whose centre is O and whose radius is equal to $\sqrt{OA_1^2 + PB_1^2 - 2 \cdot OA_1 \cdot PB_1 \cos \phi}$.

The Type 1 singularities for this robot occur when point A_i coincides with point B_i . These three Type 1 singularity points lie on the Type 2 singularity circle.

Thus we propose to analyse a usable workspace defined by a circle whose centre is O and whose radius is equal to 0.245 m for two different orientation angles ϕ , 0 and 10 degrees. This workspace is free of singularities (the radius for the Type 2 singularity circle at $\phi = 0^\circ$ and at 10° is 0.25 m and 0.2521 m, respectively).

The direct kinematic model of the robot is quite simple to obtain and has two distinct solutions, for active-joint variables that do not lead to singularities. We have to study here three different cases:

- Configurations where two wrenches are parallel. These configurations can be either a local maximum or a local minimum for the orientation error. In our example, the wrenches are perpendicular to the directions of the prismatic joints and pass through points B_i . Thus, this case appears when the directions of two of the prismatic joints are parallel (Fig. 8a). For such configurations, the orientation of the platform remains constant if only the actuated joint of the third leg moves. Therefore, this configuration is a local minimum for the orientation error.
- Configurations where two wrenches intersect at the platform center. These configurations can be either a local maximum or a local minimum for the position error. In our example, it is easy to verify that such configurations appear only outside the studied workspaces (Fig. 8b).

- (c) Configurations in which the direction of vectors $\partial\mathbf{X}/\partial q_i$ is not nearly constant. Figures 9a and 9b represent the variation in the direction of vectors $\partial\mathbf{X}/\partial q_1$ in the interval studied (the figures for $\partial\mathbf{X}/\partial q_2$ and $\partial\mathbf{X}/\partial q_3$ are obtained by 120° rotations). It is possible to note that this variation is extremely small in the studied workspace (less than 0.6°).

Thus, there are only eight active-joint variable sets to test for computing the maximum orientation and maximum position error of the robot for a given nominal pose. For each set, the two possible platform poses are obtained analytically, and the corresponding orientation error and position error are computed for the solution that is closest to the nominal pose. The resulting contour plots for two orientations are presented in Figs. 10 and 11.

As expected, it can be seen that the robot is more accurate in the center of its workspace, far from singularities. The closer the robot to the singularity circle, the poorer is its accuracy. It is interesting to note that while there is always a substantial position error, the orientation error is virtually zero in the central part of the workspace.

B. A 3-DOF 3-PRR Planar Parallel Robot

In this part, we will study the accuracy of a 3-PRR planar parallel robot (Fig. 12). This robot is designed as follows:

- the actuators are mounted on the base and are located at prismatic joints $A_i B_i$;
- the centre O of frame Oxy is located at the geometric centre of the triangle $A_1 A_2 A_3$;
- triangles $A_1 A_2 A_3$ and $C_1 C_2 C_3$ are equilateral and the guides of the prismatic joints are tangent to the circle whose centre is O and whose radius is OA_1 ;
- $OA_i = 0.35$ m, $B_i C_i = 0.4$ m and $PC_i = 0.1$ m;

- the stroke of the actuators is 76 cm.
- the error bound on the active-joint variables is $\varepsilon = 10 \text{ }\mu\text{m}$.

The direct kinematics of this robot allows up to six real solutions and cannot be solved analytically [11]. Since we only need the solution that can be reached from the nominal pose, while the active-joint variables remain in their intervals, the best solution is to use an iterative numerical method such as the Newton-Raphson method. This method requires only the computation of the Jacobian matrix of the robot, which is very simple to obtain. In our error analysis, we will always start the algorithm at the nominal configuration and vary the active-joint variables in a very small interval of length up to ε . Furthermore, we will use this algorithm for configurations that are sufficiently far from singularities. Therefore, as verified in this example, the algorithm converges very quickly (usually, in only two iterations for a precision of 10^{-20} m and 10^{-20} degrees).

The singularities of this robot have been studied in [14], but correspond to quite complex curves. Fortunately, however, it is easy find a design for which there are no singularities inside the workspace for the given working mode (given set of inverse kinematic solutions). The studied workspace of our robot corresponds to an equilateral triangle inscribed in a circle centred in O and whose radius is equal to 0.3 m. One edge of the triangle is parallel to x . This workspace will be studied for orientation angles equal to 0° and 10° . There are no Type 2 singularities in it.

We have to study here three different cases:

- (a) Configurations where two wrenches are parallel. These configurations can be either a local maximum or a local minimum for the orientation error. In our example, the instantaneous wrenches are along the lines B_iC_i . Thus, this case appears when two of the legs are parallel (Fig. 13). Two types of such

configurations exist. Figure 13a represents a configuration which corresponds to a local minimum for the orientation error. For this configuration, the two legs form a parallelogram and the orientation of the platform remains constant while the third actuator moves alone. Figure 14b represents a configuration which corresponds to a local maximum for the orientation error. In this configuration, if the mobile platform is pushed away in any direction by the third leg, it will rotate in the same sense. However, in our example, it is easy to verify that such configurations cannot appear inside the studied workspace.

- (b) Configurations where two wrenches intersect at the platform center. These configurations can be either a local maximum or a local minimum for the position error. In our example, it is easy to verify that such configurations cannot appear inside the studied workspace.
- (c) Configurations in which the direction of vectors $\partial\mathbf{X}/\partial q_i$ is not nearly constant. Figures 14a and 14b represent the variation in the direction of vectors $\partial\mathbf{X}/\partial q_1$ in the interval studied (the figures for $\partial\mathbf{X}/\partial q_2$ and $\partial\mathbf{X}/\partial q_3$ are obtained by rotations of 120°). It is possible to note that this variation is very small in the studied workspaces (less than 0.01°). As already mentioned, this is not a 100% guarantee that the maximum position error occurs at one of the eight corners of the input error bounding box. Therefore, for the purposes of this demonstration, we have also verified on the edges of the bounding box (using 20 discretization intervals on each edge). Not even one nominal configuration was found for which the maximum position error

is not at one of the eight corners. Therefore, the assumption that we make is valid in this example.

Thus, for this robot too, there only are eight sets of active-joint variable to test for computing the local maximum orientation error and local maximum position error of the robot. The resulting contour plots for two different orientations are presented in Figs. 15 and 16.

It can be noted that the position error of this parallel robot is nearly constant for both orientations, from about $11\ \mu\text{m}$ to $17\ \mu\text{m}$, and only slightly larger than the input errors $\varepsilon = 10\ \mu\text{m}$. This can be explained by the fact that the robot stays far from singularities of the second kind in the studied workspace. Furthermore, it appears the orientation error is nearly constant and virtually zero, throughout the workspace. Therefore, this parallel robot is an excellent candidate for precision positioning, as demonstrated by the authors of [8].

V. CONCLUSIONS

This paper presented a detailed study of the local maximum orientation and position errors occurring in 3-DOF planar parallel robots subjected to errors in the inputs. It was proven that, when sufficiently far from singularities, the local maximum orientation and position errors can occur only when at least two inputs suffer a maximum error. However, a simple procedure was proposed to evaluate, for a given design, whether these output errors can occur when only two inputs are at a maximum error. Thanks to this detailed study, a simple method was proposed to calculate the local maximum orientation and position errors for a given nominal configuration and given error bound on the inputs. The method involves solving the direct kinematics for eight, or a maximum of $12n$ (n being the number of discretization steps), sets of inputs. This

method is relatively fast, accurate, but mostly, very simple to implement and gives valuable insight into the kinematic accuracy of parallel robot. The authors believe that the proposed method should be used for all 3-DOF planar fully-parallel robots instead of the much less meaningful dexterity maps.

REFERENCES

- [1] J.-P. Merlet, Computing the worst case accuracy of a PKM over a workspace or a trajectory, The 5th Chemnitz Parallel Kinematics Seminar, Chemnitz, Germany, 2006, pp. 83–96.
- [2] J.-P. Merlet, Jacobian, manipulability, condition number, and accuracy of parallel robots, *Journal of Mechanical Design* 128 (January) (2006) 199–205.
- [3] C.M. Gosselin, The optimum design of robotic manipulators using dexterity indices, *Robotics and Autonomous Systems* 9 (4) (1992) 213–226.
- [4] C.M. Gosselin, J. Angeles, A global performance index for the kinematic optimization of robotic manipulators, *Journal of Mechanical Design* 113 (3) (1991) 220–226.
- [5] A. Yu, I.A. Bonev, P.J. Zsombor-Murray, Geometric method for the accuracy analysis of a class of 3-DOF planar parallel robots, *Mechanism and Machine Theory*, 2007 (accepted).
- [6] V. Arakelian, S. Briot, S. Guégan, J. Le Flecher, Design and prototyping of new 4, 5 and 6 degrees of freedom parallel manipulators based on the copying properties of the pantograph linkage, *Proceedings of the 36th International Symposium on Robotics*, Keidanren Kaikan, Tokyo, Japan, November 29 – December 1, 2005.
- [7] C.M. Gosselin, S. Lemieux, J.-P. Merlet, A new architecture of planar three-degree-of-freedom parallel manipulator, *IEEE International Conference on Robotics and Automation*, Minneapolis, Minnesota, USA, 1996, pp. 3738–3743.
- [8] J. Hesselbach, J. Wrege, A. Raatz, O. Becker, Aspects on the design of high precision parallel robots, *Assembly Automation* 24 (1) (2004) 49–57.

[9] C. Gosselin, J. Angeles, Singularity analysis of closed-loop kinematic chains, *IEEE Transactions on Robotics and Automation* 6 (3) (1990) 281–290.

[10] J.-P. Merlet, C. Gosselin, N. Mouly, Workspaces of planar parallel manipulators, *Mechanism and Machine Theory* 33 (1) (1998) 7–20.

[11] J.-P. Merlet, Direct kinematics of planar parallel manipulators, *IEEE International Conference on Robotics and Automation*, Minneapolis, Minnesota, USA, 1996, pp. 3744–3749.

[12] D. Chablat, P. Wenger, I.A. Bonev, Self motion of a special 3-RPR planar parallel robot, *Advances in robot kinematics*, J. Lenarcic and B. Roth (eds.), Springer, 2006, pp. 221–228.

[13] V. Arakelian, S. Briot and V. Glazunov, Investigations of special configurations of the parallel structure manipulator PAMINSA, *Journal of Machinery Manufacture and Reliability*, Allerton Press Inc., (1), 2006, in Russian.

[14] I.A. Bonev, D. Zlatanov, C.M. Gosselin, Singularity analysis of 3-DOF planar parallel mechanisms via screw theory, *ASME Journal of Mechanical Design* 125(3) (2003) 573–581.

FIGURE CAPTIONS

Fig. 1: Input error bounding box.

Fig. 2: The leg wrenches applied to the mobile platform.

Fig. 3: Pure translational motion following a variation in q_3 only.

Fig. 4: Extrema of the first and second type for the function $\Delta\phi^2$.

Fig. 5: Pure rotational motion following a variation in q_3 only.

Fig. 6: Analysis of a local extremum for which $\partial\mathbf{X}/\partial q_i$ is orthogonal to $(\mathbf{X} - \mathbf{X}_0)$.

Fig. 7: Schematic of the 3-RPR planar parallel manipulator.

Fig. 8: Configurations of the 3-RPR parallel manipulator corresponding to local extrema in (a) the orientation error and (b) the position error.

Fig. 9: Variation in the direction of vector $\partial\mathbf{X}/\partial q_1$ (degrees) for two orientations.

Fig. 10: Maximum orientation and position errors for the 3-RPR manipulator at $\phi = 0^\circ$.

Fig. 11: Maximum orientation and position errors for the 3-RPR manipulator at $\phi = 10^\circ$.

Fig. 12: Schematic of the studied 3-PRR manipulator.

Fig. 13: Configurations of the 3-PRR parallel manipulator corresponding to local (a) minimum and (b) maximum of the orientation error.

Fig. 14: Variation in the direction of vector $\partial\mathbf{X}/\partial q_1$ (degrees) for two orientations.

Fig. 15: Maximum orientation and position errors for the 3-PRR manipulator at $\phi = 0^\circ$.

Fig. 16: Maximum orientation and position errors for the 3-PRR manipulator at $\phi = 10^\circ$.

FIGURES

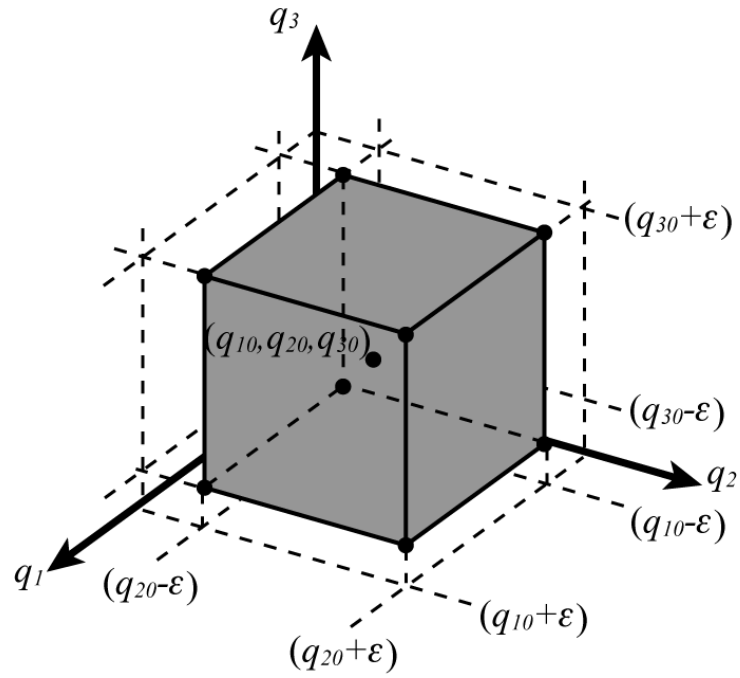


Fig. 1: Input error bounding box.

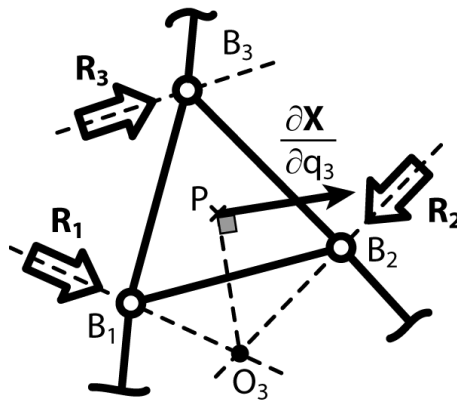


Fig. 2: The leg wrenches applied to the mobile platform.

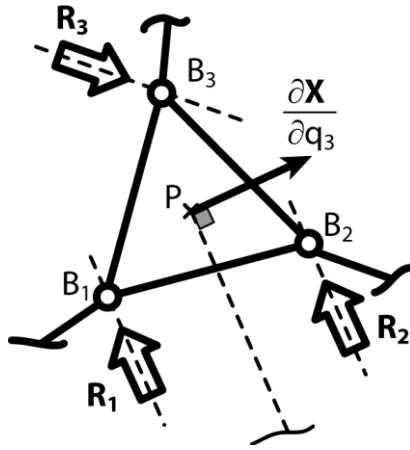


Fig. 3: Pure translational motion following a variation in q_3 only.

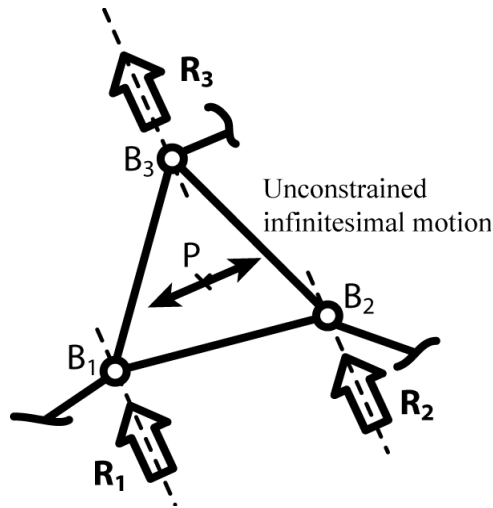


Fig. 4: Extrema of the first and second type for the function $\Delta\phi$.

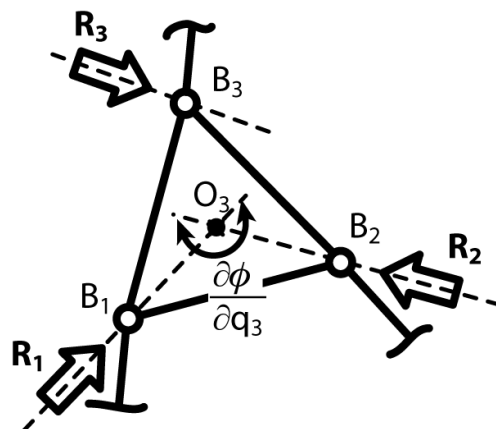


Fig. 5: Pure rotational motion following a variation in q_3 only.

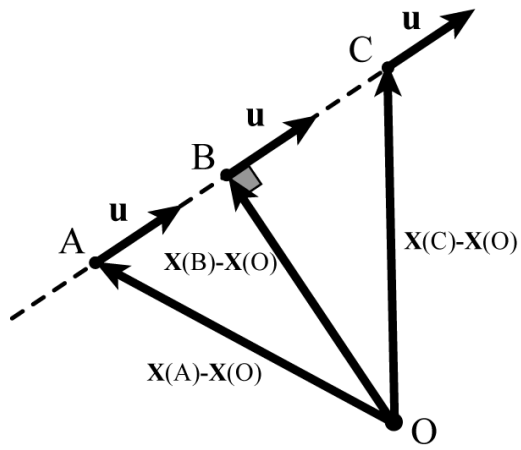


Fig. 6: Analysis of a local extremum for which $\partial \mathbf{X} / \partial q_i$ is orthogonal to $(\mathbf{X} - \mathbf{X}_0)$.

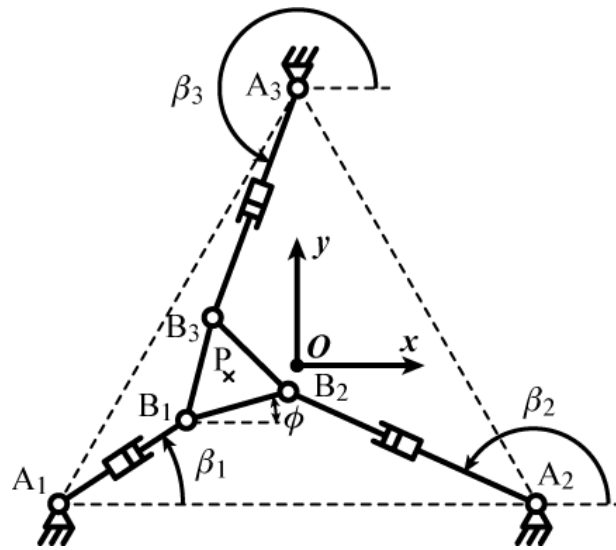


Fig. 7: Schematic of the 3-RPR planar parallel manipulator.

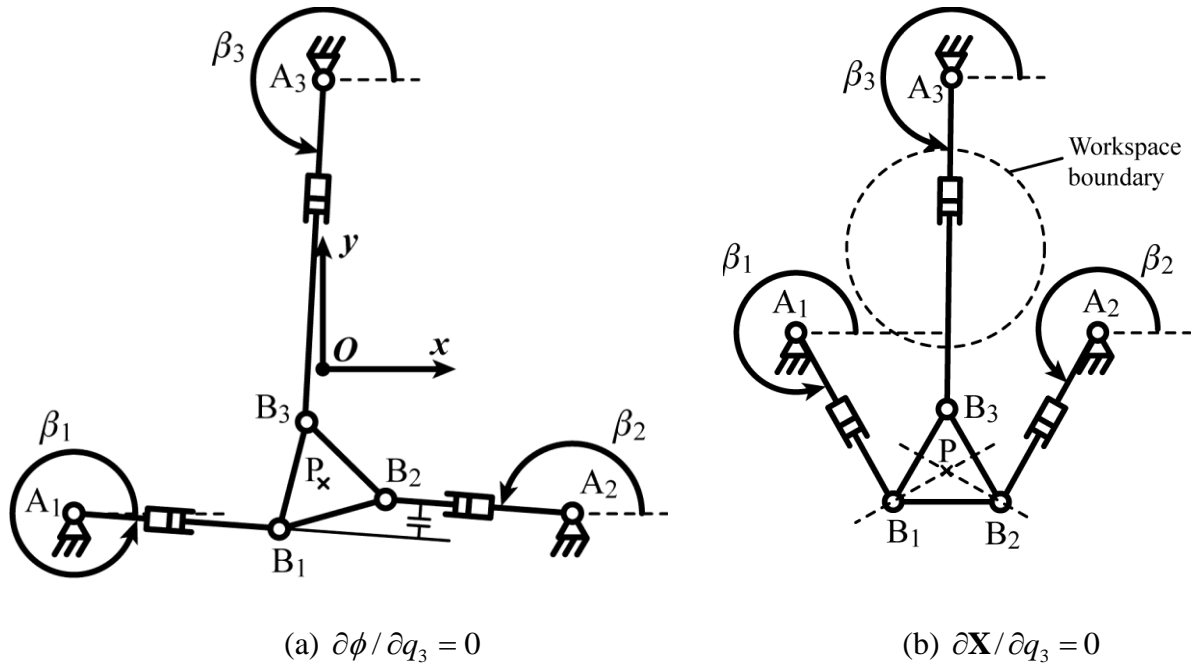


Fig. 8: Configurations of the 3-*RPR* parallel manipulator corresponding to local extrema in (a) the orientation error and (b) the position error.

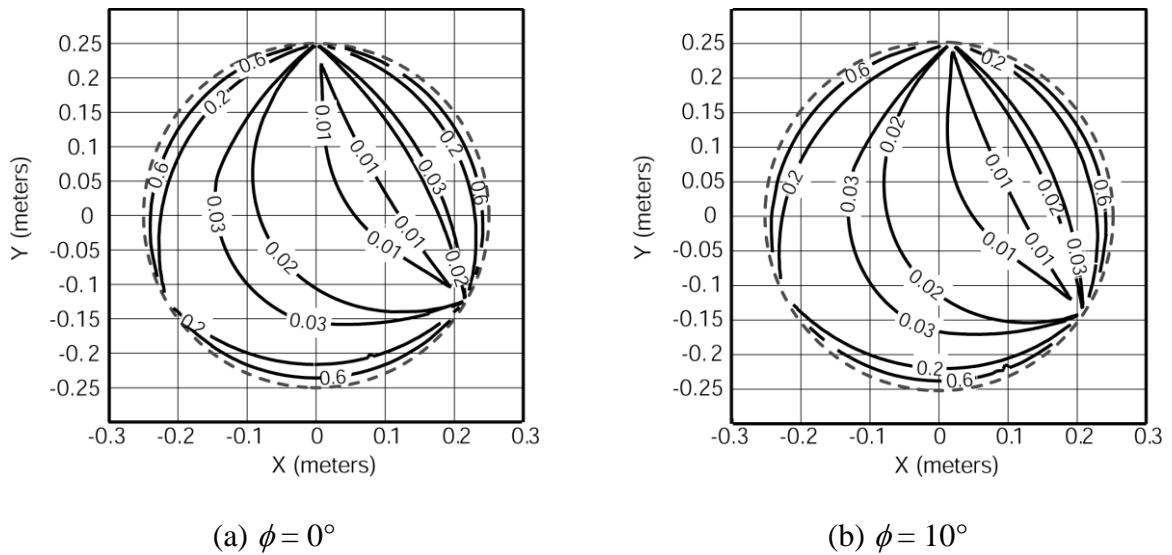
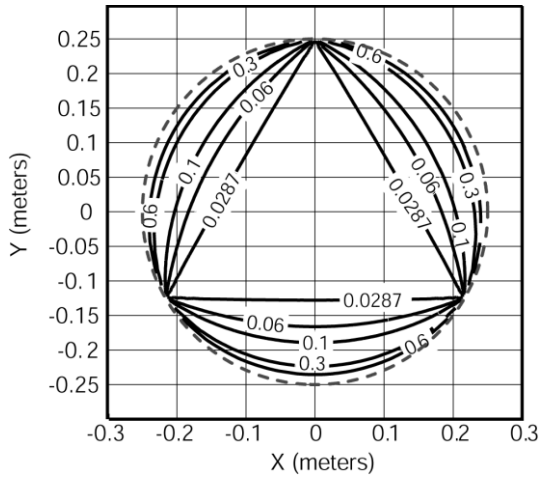
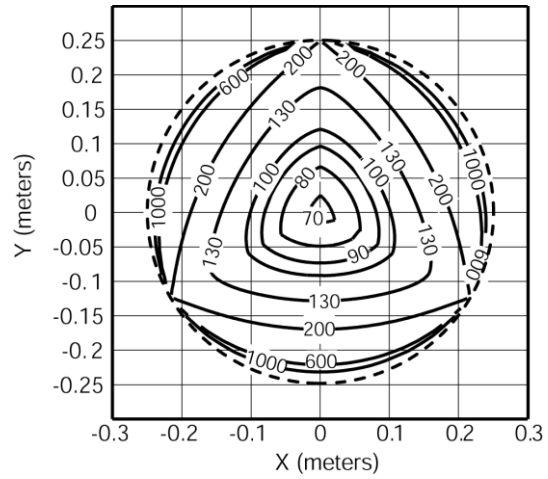


Fig. 9: Variation in the direction of vector $\partial\mathbf{X}/\partial q_1$ (degrees) for two orientations.

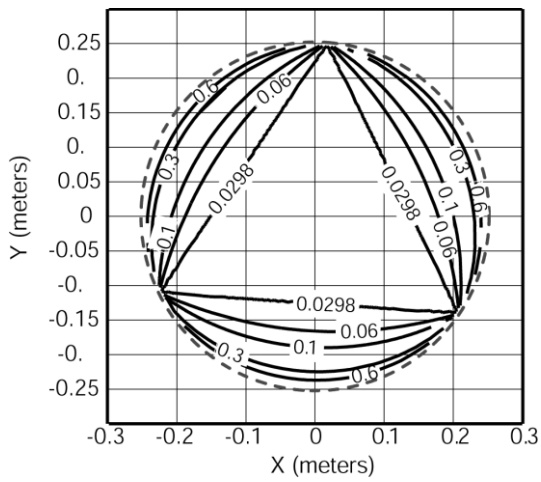


(a) maximum orientation error (degrees)

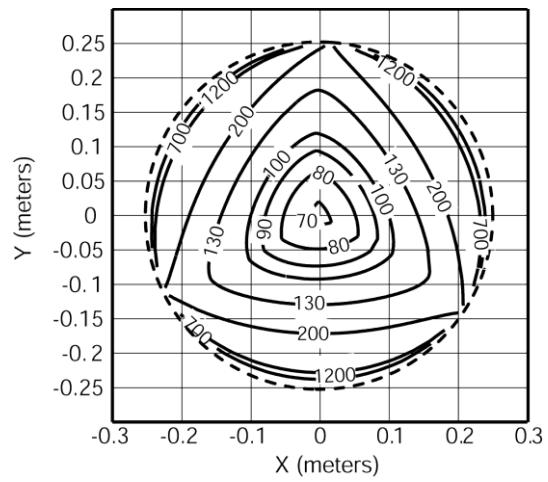


(b) maximum position error (μm)

Fig. 10: Maximum orientation and position errors for the 3-RPR manipulator at $\phi = 0^\circ$.



(a) maximum orientation error (degrees)



(b) maximum position error (μm)

Fig. 11: Maximum orientation and position errors for the 3-RPR manipulator at $\phi = 10^\circ$.

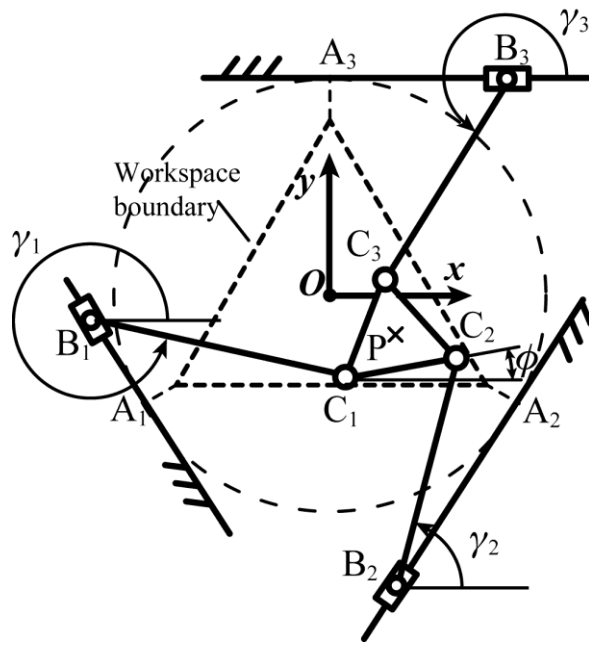
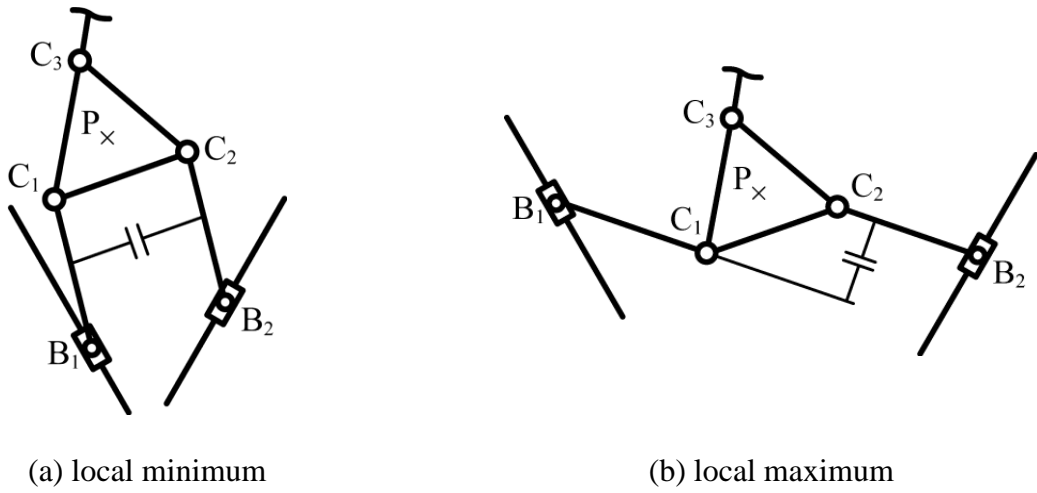


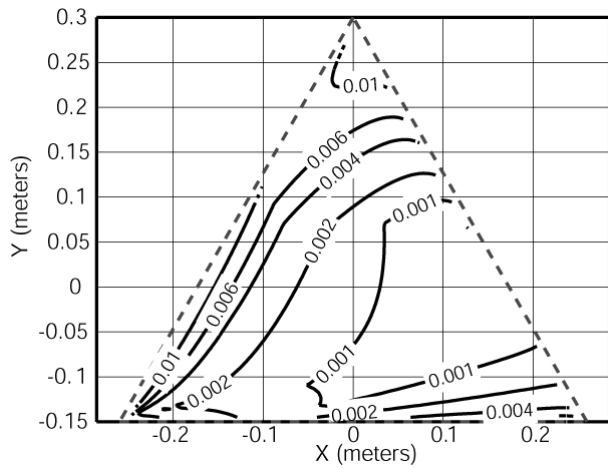
Fig. 12: Schematic of the studied 3-PR R manipulator.



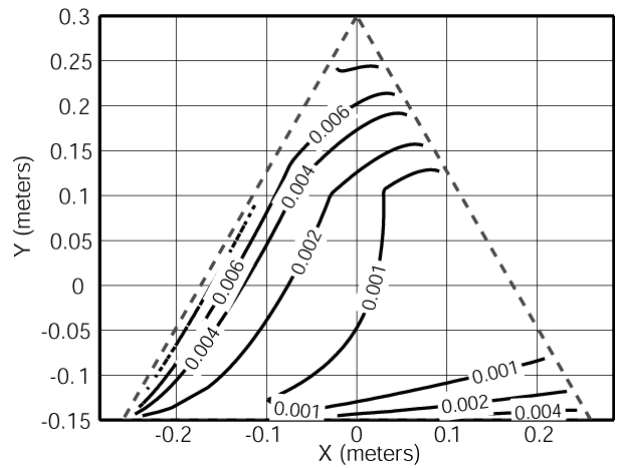
(a) local minimum

(b) local maximum

Fig. 13: Configurations of the 3-PRR parallel manipulator corresponding to local (a) minimum and (b) maximum of the orientation error.

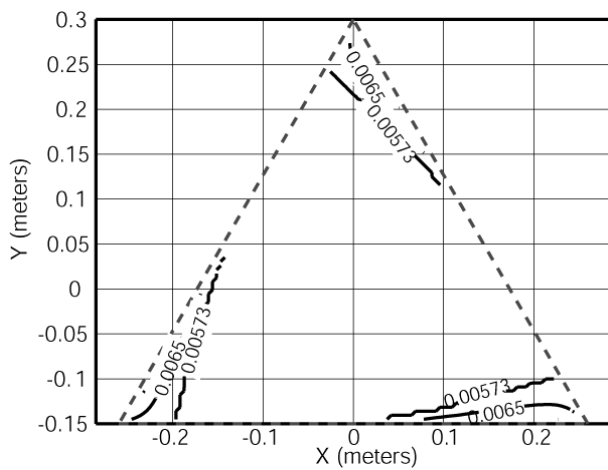


(a) $\phi = 0^\circ$

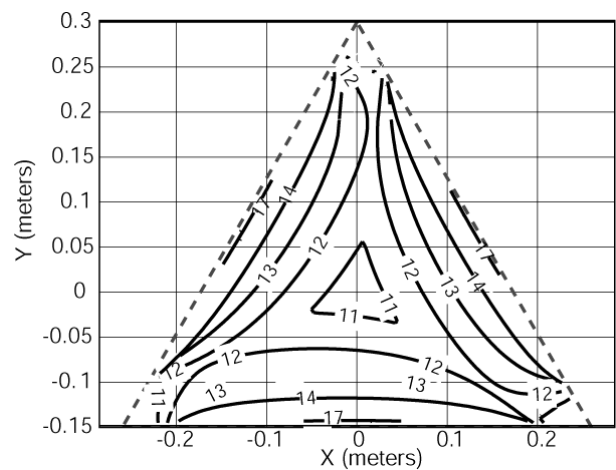


(b) $\phi = 10^\circ$

Fig. 14: Variation in the direction of vector $\partial\mathbf{X}/\partial q_1$ (degrees) for two orientations.

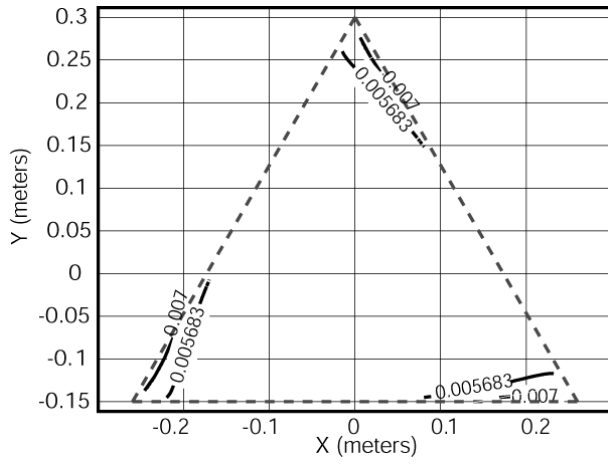


(a) maximum orientation error (degrees)

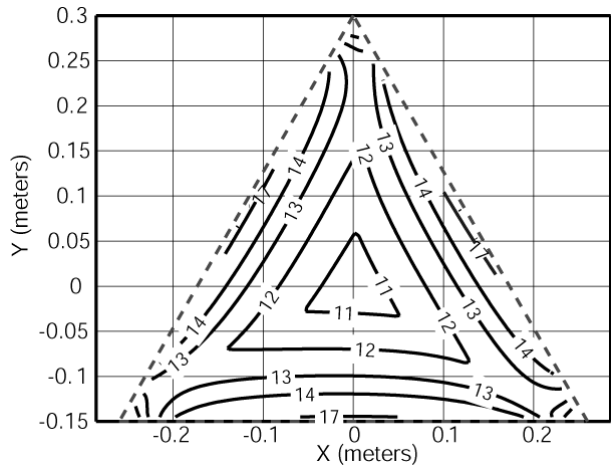


(b) maximum position error (μm)

Fig. 15: Maximum orientation and position errors for the 3-*PRR* manipulator at $\phi = 0^\circ$.



(a) maximum orientation error (degrees)



(b) maximum position error (μm)

Fig. 16: Maximum orientation and position errors for the 3-*PRR* manipulator at $\phi = 10^\circ$.