



Computation of electric fields and potential on polluted insulators using a boundary element method

Jean-Louis Rasolonjanahary, Laurent Krähenbühl, Alain Nicolas

► To cite this version:

Jean-Louis Rasolonjanahary, Laurent Krähenbühl, Alain Nicolas. Computation of electric fields and potential on polluted insulators using a boundary element method. IEEE Transactions on Magnetics, 1992, 28 (2), pp.1473 - 1476. 10.1109/20.123974 . hal-00359849

HAL Id: hal-00359849

<https://hal.science/hal-00359849>

Submitted on 9 Feb 2009

HAL is a multi-disciplinary open access archive for the deposit and dissemination of scientific research documents, whether they are published or not. The documents may come from teaching and research institutions in France or abroad, or from public or private research centers.

L'archive ouverte pluridisciplinaire **HAL**, est destinée au dépôt et à la diffusion de documents scientifiques de niveau recherche, publiés ou non, émanant des établissements d'enseignement et de recherche français ou étrangers, des laboratoires publics ou privés.

COMPUTATION OF ELECTRIC FIELDS AND POTENTIAL ON POLLUTED INSULATORS USING A BOUNDARY ELEMENT METHOD

J.L. Rasolonjanahary, L. Krähenbühl, A. Nicolas
Laboratoire d'Electrotechnique de Lyon, Ecole Centrale de Lyon,
URA CNRS 829, BP 163, 69131 Ecully Cedex, France.

Abstract—This paper presents a calculation method for electric fields and potential usable in the case of polluted insulator. This method based on boundary integral equations is very suitable for three-dimensional geometries and polluted layers. Results given by this method are compared with analytical solutions (potential, currents) and with measured values (potential, leakage current).

INTRODUCTION

The presence of pollution layer on HV insulators is very frequent in industrial and coastal regions. This pollution layer when combined with moisture becomes conductive and a leakage current flows through it. Dry bands can appear and the distributions of electric fields and potential become distorted and flashovers can occur. Therefore, it is important to compute electric fields and potential in studying the behaviour of polluted insulators.

Several numerical computation methods were developed for solving this problem. They are based on domain methods: finite differences[1,2] and finite element methods[3,4,5], charge simulation methods [6,7] and boundary methods[8,9]. Most of these methods are conceived for plane or axisymmetrical arrangements. In this paper we present a boundary integral equation method which can solve three-dimensional arrangements (geometry and pollution). It is a continuation of the work presented by HUANG in [12,13]. This method presents several advantages over the former ones (reduced number of unknowns, these being V and $\Psi (= \epsilon_r E_n)$ at the insulator surfaces, taking account of infinite domains).

THEORETICAL FORMULATION

Boundary integral equation method

The governing equation for potential distribution inside a domain Ω with a zero charge density obeys Laplace's equation

$$\Delta V = 0 \quad \text{in } \Omega \quad (1)$$

Applying Green's theorem, we can express the potential V on all points P of Ω in terms of V and the variable $\Psi = \epsilon_r \frac{\partial V}{\partial n}$ on the boundary Σ of Ω as follows:

Manuscript received July 7, 1991.

$$cV(P) = - \int_{\Sigma} \left(V \frac{\partial G}{\partial n} - \frac{1}{\epsilon_r} G \Psi \right) ds \quad (2)$$

In this equation G is the Green's function, \mathbf{n} is the unit normal outward vector to Σ , $c = A/4\pi$ where A is the solid angle under which the point P sees the oriented surface Σ and ϵ_r is the relative permittivity of Ω .

Case of polluted insulator

In the case of polluted insulator, Fig. 1, we assume that the charge density is zero in the air domain Ω_1 whose relative permittivity is $\epsilon_{r1} = 1$ and in insulating material domain Ω_2 which has a relative permittivity ϵ_{r2} . The polluted area S of the insulator is characterized by its surface conductivity σ_s .

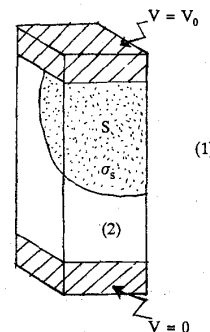


Fig. 1. Polluted insulator.

We write (2) for the air domain whose frontier is S_1 and for the insulating material domain whose frontier is S_2 , we obtain for air domain,

$$cV = - \int_{S_1} \left(V \frac{\partial G}{\partial n} - \frac{1}{\epsilon_{r1}} G \Psi_1 \right) ds \quad (3)$$

and for insulating material domain,

$$cV = - \int_{S_2} \left(V \frac{\partial G}{\partial n} - \frac{1}{\epsilon_{r2}} G \Psi_2 \right) ds \quad (4)$$

In these equations Ψ_1 represents the value of Ψ on the air side and Ψ_2 that of insulating material side: Fig. 2.

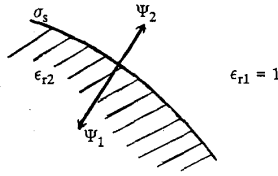


Fig. 2. Definition of Ψ_1 and Ψ_2 .

For clean areas, we have $\Psi_1 + \Psi_2 = 0$ and for polluted ones we use the conservation of charge in taking account of the surface current $\mathbf{J}_s = -\sigma_s \mathbf{grad}_s V$. The conservation of charge is written as [10]

$$\text{div}_s \mathbf{J}_s + \frac{\partial(\mathbf{D} \cdot \mathbf{n})}{\partial t} = 0 \quad \text{on } S \quad (5)$$

where \mathbf{D} is the electric displacement and t is the time. The subscript s indicates a surfacic operator. If we express $\mathbf{D} \cdot \mathbf{n}$ in terms of Ψ_1 and Ψ_2 and if we use a sinusoidal source with an angular frequency ω ($\frac{\partial}{\partial t} = j\omega$ with $j = \sqrt{-1}$), (5) becomes

$$\text{div}_s(-\sigma_s \mathbf{grad}_s V) + j\omega\epsilon_0(\Psi_1 + \Psi_2) = 0 \quad \text{on } S \quad (6)$$

where ϵ_0 denotes the free space permittivity. We introduce an auxiliary unknown Θ defined by $\Theta = \Psi_1 + \Psi_2$, so (6) becomes

$$\text{div}_s(-\sigma_s \mathbf{grad}_s V) + j\omega\epsilon_0\Theta = 0 \quad \text{on } S \quad (7)$$

We solve this equation by using a weighted residual method with the following boundary conditions, Fig. 3:

$$\begin{aligned} V &= V_0 \\ \frac{\partial V}{\partial \nu} &= 0 \end{aligned}$$

on Γ_1

on Γ_2

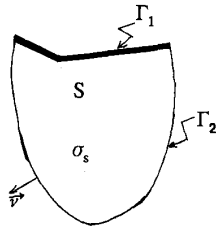


Fig. 3. Boundary conditions on the polluted area.

then we obtain

$$\int_S \sigma_s \mathbf{grad}_s w \mathbf{grad}_s V ds - \int_{\Gamma_1} \sigma_s w \frac{\partial V}{\partial \nu} d\Gamma + j\omega\epsilon_0 \int_S w \Theta ds = 0 \quad (8)$$

where w is the weighting function.

If we now express Ψ_2 in terms of Θ and Ψ_1 and if we insert this expression into (4), we obtain

$$cV = - \int_{S_2} \left(V \frac{\partial G}{\partial \mathbf{n}} + \frac{1}{\epsilon_{r2}} G \Psi_1 - \frac{1}{\epsilon_{r2}} G \Theta \right) ds \quad (4')$$

The set of equation that we have to solve is formed by (3), (8) and (4').

We divide the different boundaries S_1 , S_2 into finite elements and on each finite element we interpolate V , $\Psi = \Psi_1$ and Θ with the corresponding nodal values V_i, Ψ_i, Θ_i :

$$V = \sum \alpha_i V_i$$

$$\Psi = \sum \alpha_i \Psi_i$$

$$\Theta = \sum \alpha_i \Theta_i$$

where α_i are the interpolating functions. In our discretization we use an element with eight nodes ($1 \leq i \leq 8$). After discretizing and assembling, we obtain a system of complex linear equations, which is solved by using gaussian elimination.

RESULTS

In this part, we report computations results which we compare with analytical and measured ones.

Comparison with analytical solutions:

The example we use here for comparison is extracted from [3]. The geometry is reproduced in Fig. 4 with $\epsilon_{r2} = 4$, $\sigma_s = 10^{-9}$ S and $V_0 = 100$ V. The potential $V(x)$ at a point x is given by

$$V(x) = V_0 \frac{\cosh[(1+j)k(1-x)]}{\cosh[(1+j)kl]}$$

where l is the length of coating, $k = \sqrt{\frac{\omega\epsilon_0\epsilon_{r2}}{2\sigma_s a}}$ with a the thickness of the insulating material and $\omega = 100\pi$. The modulus of $\Psi(x)$ and the tangential field are derived from $V(x)$. For solving this problem we add a width of 60 mm, so we obtain a three-dimensional geometry, Fig. 5. We compare the potential values along the line OA, Fig. 6-7. Also comparisons between analytical and computed values of the modulus of Ψ and tangential electric fields show good similarities [11].

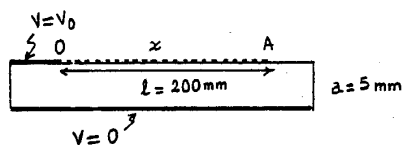


Fig. 4. Two dimensional problem.

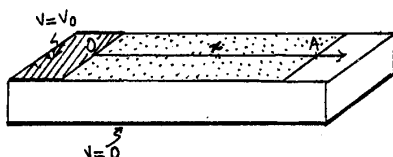


Fig. 5. Three dimensional problem.

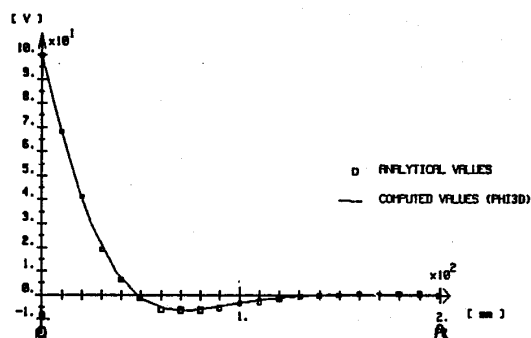


Fig. 6. Real part of V.

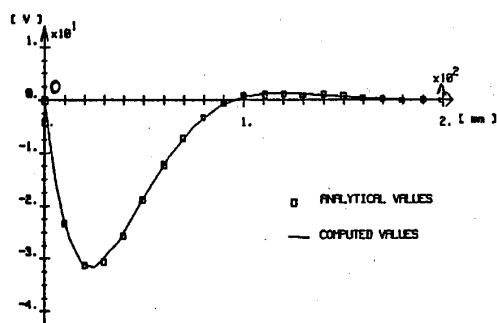


Fig. 7. Imaginary part of V.

These figures show that our results agree with analytical solutions. For the current values (capacitive and conductive), the comparisons are presented in Table I. We note a good agreement with analytical values.

TABLE I
COMPARISON OF ANALYTICAL AND COMPUTED CURRENTS

Capacitive current values (A)		Conductive current values (A)	
theoretical	computed	theoretical	computed
$j2 \cdot 10^{-7}$	$-2 \cdot 10^{-9} + j2.02 \cdot 10^{-7}$	$1 \cdot 10^{-7} + j1 \cdot 10^{-7}$	$1 \cdot 10^{-7} + j.99 \cdot 10^{-7}$

Comparison with measured values:

For this sort of comparison the geometries used for the measurements are axisymmetric, therefore we used only 1/12 of the real geometries in our calculation.

For the leakage currents, a sample insulator was sprayed with salt fog. Four experiments were done and for each experiment the leakage current was measured. The corresponding surface conductivity was calculated and this value was introduced in the computation. The computed leakage currents are compared with the measured values [12]: Table II.

TABLE II
COMPARISON OF MEASURED AND COMPUTED CURRENTS

$V_0(V_{rms})$	$\sigma_s(\mu S)$	measured values(mA)	computed values(mA)
830	1.077	2.12	2.13
1070	1.03	2.62	2.64
600	3.54	5.02	5.07
1000	3.81	9.05	9.11

For the potential, the measurement was done along a portion A'C of the pin-insulator (generatrix). This is reported with its mesh in Fig. 8. The part ABB'A' was coated with a semiconducting layer ($\sigma_s = 1.4 \cdot 10^{-8} S$). The computed (PHI3D) and measured values [5] are indicated in Fig. 9. Clearly, the values do agree.

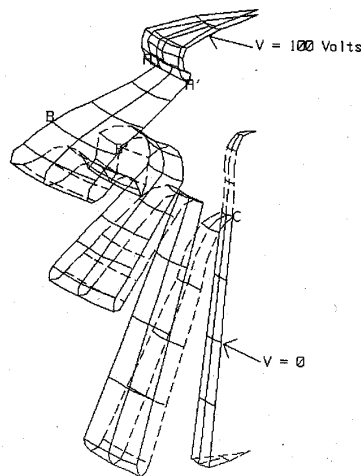


Fig. 8. Geometry used for the pin insulator.

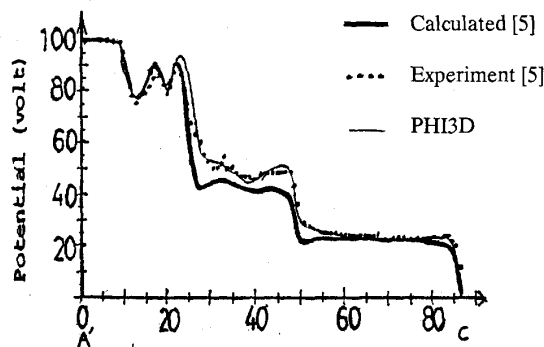


Fig. 9. Potential values along A'B'C.

CONCLUSION

We have presented a boundary integral equation method which presents several advantages over the existing ones in terms of the reduced number of unknowns called into play, the taking account of the infinite domain and the obtaining of direct values of potential and electric fields at the insulator surfaces: V and $\Psi (= \epsilon_r E_n)$. The two kinds of comparison show that the proposed method is appropriate for three dimensional arrangements.

ACKNOWLEDGMENT

We would like to express our gratitude to Electricité de France for financial supporting this project. Our special thanks also goes to Mr Vitet of Electricité de France who follows with a great interest this subject with us.

REFERENCES

- [1] J.A. Seeger, *Calculation of electric fields near insulator boundaries by finite differences*, Proceedings of the 1st Iranian Congress of Electrical Engineering, Shiraz, May 12-16, 1974, p.278-287.
- [2] E. Asenjo S., N. Morales O., *Low frequency complex fields in polluted insulators*, I.E.E.E. trans. EI, Vol. 17, n°3, june 1982.
- [3] O. W. Andersen, *Finite element solution of complex potential electric fields*, I.E.E.E. trans. PAS, Vol. 96, n°4, july/august 1977.
- [4] S.M. Sadovic, *Numerical considerations of the effect of resistive coatings and surface pollution on the potential distribution of high-voltage insulating systems*, 3rd I.S.H.V.E., Milan 28-31 august 1979, paper n° 12-06.
- [5] S. Kato, H. Kokai, Y. Nakajima, T. Kouno, *Finite element method for calculation of potential distribution to the porcelain insulator with semiconducting surface layer*, 3rd I.S.H.V.E., Milan 28-31 august 1979, paper n° 12-11.
- [6] T. Takuma, T. Kawamoto, *Field calculation including surface resistance by charge simulating method*, 3rd I.S.H.V.E., Milan 28-31 august 1979, paper n° 12-01.
- [7] M. Abdel-Salam, E.K. Stanek, *Optimizing field stress on high-voltage insulators*, I.E.E.E. trans. EI, Vol. 22, n°1, february 1987.
- [8] R.G. Olsen, *Integral equation for electrostatic problem with thin dielectric or conducting layers*, I.E.E.E. trans. EI, Vol. 21, n°4, august 1986.
- [9] A. Majid, O. Tonnesen, *Boundary element method solution of the surface pollution on the volatge distribution of a HV insulators*, NORD-IS, june 13 15, 1988, paper n°13.
- [10] L. Krähenbühl, *A theory of thin layers in electrical engineering: Application to eddy current calculation inside a shell using the BIE software PHI3D*, 4th International IGTE Symposium and European TEAM Workshop, 10-12 October 1990, Graz, Austria.
- [11] J.L. Rasolonjanahary, L. Krähenbühl, A. Nicolas, *Modélisation 3D de la conduction surfacique des isolateurs pollués*, 2^{ème} rapport annuel, 1990.
- [12] Q.S. Huang, *Applications nouvelles de la méthode des équations intégrales de frontière en électrotechnique*, Thèse E.C.L., 1987.
- [13] P. Auriol, Q.S. Huang, L. Krähenbühl, *Numerical simulation of the conducting surface of high voltage insulating systems in 3D*, I.E.E.E. trans. MAG, Vol. 24, n°1, p.43-46, August 1987.