



HAL
open science

Integration of PtSi in p-type MOSFETs using a sacrificial low-temperature germanidation process

Nicolas Breil, Emmanuel Dubois, Aomar Halimaoui, Arnaud Pouydebasque, Guilhem Larrieu, Adam Laszcz, J. Ratajczak, Thomas Skotnicki

► **To cite this version:**

Nicolas Breil, Emmanuel Dubois, Aomar Halimaoui, Arnaud Pouydebasque, Guilhem Larrieu, et al.. Integration of PtSi in p-type MOSFETs using a sacrificial low-temperature germanidation process. IEEE Electron Device Letters, 2008, 29, pp.152-154. 10.1109/LED.2007.914090 . hal-00356971

HAL Id: hal-00356971

<https://hal.science/hal-00356971v1>

Submitted on 18 Sep 2024

HAL is a multi-disciplinary open access archive for the deposit and dissemination of scientific research documents, whether they are published or not. The documents may come from teaching and research institutions in France or abroad, or from public or private research centers.

L'archive ouverte pluridisciplinaire **HAL**, est destinée au dépôt et à la diffusion de documents scientifiques de niveau recherche, publiés ou non, émanant des établissements d'enseignement et de recherche français ou étrangers, des laboratoires publics ou privés.

Integration of PtSi in p-Type MOSFETs Using a Sacrificial Low-Temperature Germanidation Process

N. Breil, E. Dubois, *Member, IEEE*, A. Halimaoui, A. Pouydebasque, A. Łaszcz, J. Ratajczak, G. Larrieu, and T. Skotnicki, *Senior Member, IEEE*

Abstract—In this letter, an original selective etching method of Pt with respect to PtSi using a sacrificial low-temperature germanidation process is used for the integration of valence band edge contacts in p-type MOSFET devices. After silicidation annealing, the excess of Pt due to incomplete reaction with silicon or standing on insulating layers can be transformed into the PtGe₂ phase. The solubility of this phase in a sulfuric peroxide mixture (SPM) without altering PtSi is demonstrated. The suitability and scalability of the proposed integration scheme is shown through the successful integration and characterization of PtSi source/drain contacts in p-type MOSFETs.

Index Terms—Etching, platinum, Schottky barriers, semiconductor-metal interfaces, silicon.

I. INTRODUCTION

PLATINUM Silicide (PtSi) is very attractive for the future very-large-scale integration (VLSI) technologies as a contact silicide for submicrometer p-MOSFETs because of its low barrier height to p-type Si, low-silicon consumption, and low-temperature of formation [1]. The integration of a contact silicide requires a self-aligned selective etching process in order to remove the excess metal remaining after the silicidation annealing, without altering the silicide phase. For this purpose, aqua regia (AR) is commonly used to integrate PtSi in MOSFET devices. However, it was highlighted that AR is not a suitable solution unless a high-temperature (around 600 °C) oxidization step of PtSi is realized in order to form an ~5-nm-thick SiO₂/PtSi protective overlayer [2]–[4].

As the oxidization reaction requires a silicon reservoir coming from the silicide phase, this process is hardly applicable to very thin PtSi layers integrated as source and drain contacts, because

it can alter the PtSi/Si contact resistance, and severely increase the silicide sheet resistance (R_s).

Furthermore, the introduction of a high-*k*/metal gate stack at the 32 nm technology node brings tight constraints associated with the thermal budget and the chemical steps involved after the gate definition. In that context, AR cannot be envisioned as a viable solution due to its extreme reactivity with most metals and silicon alloys. In contrast, we report in this letter a new selective etching method of Pt with respect to PtSi using a sacrificial low-temperature germanidation process and a conventional chemistry based on sulfuric peroxide mixture (SPM). We demonstrate that this original process enables the safe integration of thin PtSi layers through the fabrication and characterization of p-type MOSFETs featuring promising electrical characteristics.

II. SACRIFICIAL GERMANIDATION

Self-aligned silicidation involves the removal of metal in excess either due to partial Pt consumption on silicon areas or due to unreacted Pt over an insulating film (e.g., SiO₂ or Si₃N₄ spacers). As an alternative to the AR-based chemistry, the proposed process is based on the transformation of a chemically stable Pt layer into a more reactive Pt_xGe_y phase that is easily etched in SPM. Starting from a Ge/Pt stack, the Pt_xGe_y phase formed after annealing depends both on the thickness ratio of these layers and on the annealing temperature. Considering the MOSFET device integration, uncertainties on the thickness ratio exist due to the device morphology and due to some degree of anisotropy associated with deposition processes. It is, therefore, desirable to implement a method for which the final phase depends only on the annealing temperature, regardless of the amount of Ge. According to the literature [5]–[8], PtGe₂ is the Ge richest phase of the Pt–Ge binary system. Because this stoichiometry is obtained with Ge in excess and for annealing temperatures around 400 °C, our study focuses on this phase. Considering an atomic density [9] of 6.64×10^{22} and 4.42×10^{22} atoms/cm³ for Pt and Ge, respectively, the Pt:Ge thickness ratio is systematically set to 1:3 in the following experiments.

The p-type substrates featuring a 20-nm-thick SiO₂ full sheet layer were used to study the formation of Pt_xGe_y phases and their solubility in SPM. The samples were loaded in an e-gun evaporation system, and a 20-nm-thick Pt layer followed by a 60-nm-thick Ge overlayer were evaporated. They subsequently received a rapid thermal annealing (RTA) at temperatures ranging from 100 °C to 600 °C for 5 min in forming gas (N₂:H₂::95:5). Grazing angle X-ray diffraction (XRD) characterizations as well as four points probe R_s measurements were performed on full

N. Breil is with STMicroelectronics, 38926 Crolles Cedex, France. He is also with the Institut d'Electronique de Microelectronique et de Nanotechnologie, Unité mixte de Recherche (IEMN UMR), 59652 Villeneuve d'Ascq Cedex, France (e-mail: nicolas.breil@isen.iemn.univ-lille1.fr).

A. Halimaoui and T. Skotnicki are with STMicroelectronics, 38926 Crolles Cedex, France (e-mail: aomar.halimaoui@st.com; aomar.halimaoui@cea.fr; thomas.skotnicki@st.com).

E. Dubois and G. Larrieu are with the Institut d'Electronique de Microelectronique et de Nanotechnologie, Unité mixte de Recherche (IEMN UMR), 59652 Villeneuve d'Ascq Cedex, France (e-mail: emmanuel.dubois@isen.iemn.univ-lille1.fr; guilhem.larrieu@isen.iemn.univ-lille1.fr).

A. Pouydebasque is with the CEA-LETI, 17 rue des Martyrs, 38054 Grenoble Cedex, France (e-mail: arnaud.pouydebasque@cea.fr).

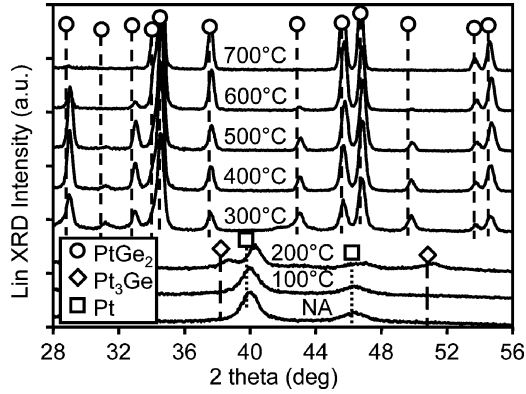


Fig. 1. XRD spectra of the Pt_xGe_y phases obtained from alloying of a Ge (60 nm)/Pt (20 nm) stack on a SiO_2 substrate showing changes in Pt_xGe_y stoichiometry with the temperature of germanidation. A part of the Pt layer reacts with Ge to form the Pt_3Ge phase at 200 °C. At 300 °C, the Pt layer is totally transform into the $PtGe_2$.

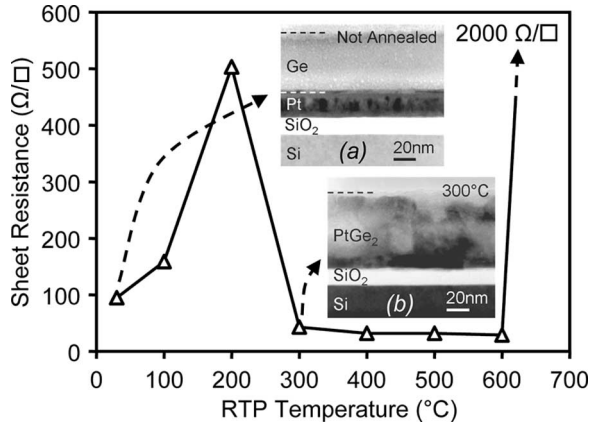


Fig. 2. Variations of the sheet resistance (R_s) with the temperature of germanidation of the Ge (60 nm)/Pt (20 nm) stack on a SiO_2 substrate. A stable $PtGe_2$ phase is formed between 300 and 600 °C. At 200 °C, the large increase of R_s is related to the formation of the Pt_3Ge phase. Above 600 °C, the layer starts to agglomerate resulting in high R_s . Inset: (a) TEM cross-section showing the morphology of the Ge/Pt stack after deposition. (b) TEM cross-section showing the morphology of the Ge/Pt stack for a germanidation temperature of 300 °C. The Ge overlayer is totally reacted to form the $PtGe_2$ phase.

sheet wafers. In Fig. 1, the XRD analysis shows the formation of the $PtGe_2$ phase for annealing temperatures above 300 °C. At 200 °C, the XRD spectrum reveals the presence of the Pt_3Ge phase and also the Pt metallic state. Below this temperature, metallic Pt is solely detected. The transformation curve in Fig. 2 supports conclusions drawn on the basis of diffraction data, highlighting the formation of a stable $PtGe_2$ phase between 300 °C and 600 °C. Above 600 °C, the layer starts to agglomerate, leading to a dramatic increase of R_s . A strong increase of the sheet resistance is also measured at 200 °C that can be related to the formation of the high-resistivity Pt_3Ge phase in Fig. 1, as recently observed in [10]. The Transmission Electron Microscopy (TEM) analysis of the sample before annealing in Fig. 2(a) confirms the Pt:Ge ratio of 1:3. After an annealing at 300 °C for 5 min, the Pt layer is totally reacted with Ge to form the $PtGe_2$ phase, as shown in Fig. 2(b).

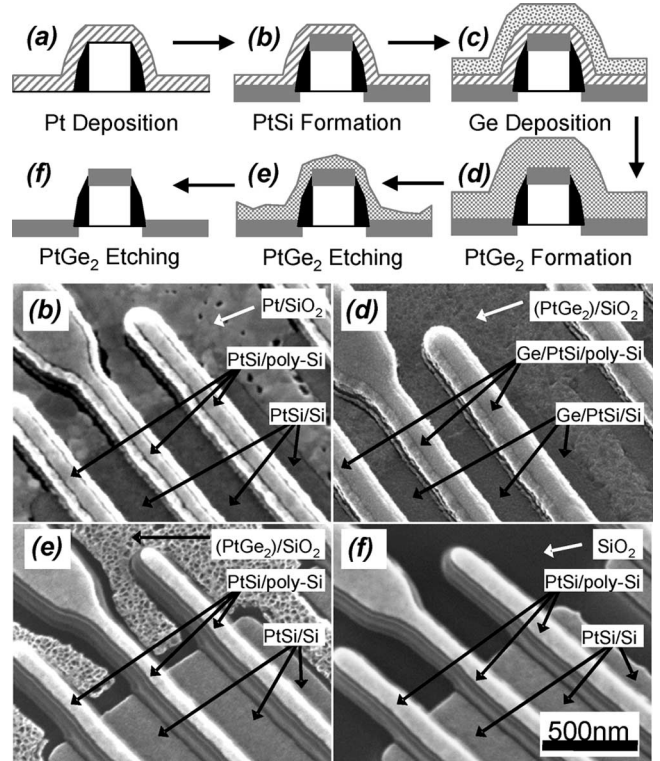


Fig. 3. Scheme of the proposed PtSi integration sequence and tilted aerial SEM views of a 35 nm device. (a) After Pt deposition. (b) After PtSi silicidation. (c) After Ge deposition. (d) After $PtGe_2$ formation. (e) and (f) After etching in SPM.

In order to study the $PtGe_2$ phase chemical reactivity, the samples annealed above 300 °C were dipped into SPM for 10 min. The corresponding SEM observations and the measurement of an infinite R_s confirm that the $PtGe_2$ phase was completely etched away. It was also checked (results not presented here) that the Ge overlayer has no measurable impact on the integrity of PtSi from the electrical (R_s) and morphological (SEM observation) standpoints, as far as a germanidation annealing up to 600 °C and a dip in SPM for 10 min are considered.

III. PtSi INTEGRATION IN MOSFET DEVICES

From the aforementioned results, a new scheme for the integration of PtSi in MOSFET devices is presented in Fig. 3. After the definition of the active area by shallow trench isolation (STI), a 12 Å nitrided oxide was grown, on the top of which a 80 nm layer of p^+ polysilicon was deposited. Following the gate patterning, lowly doped (LDD) extensions were implanted, and SiN/ SiO_2 spacers were formed. Source and drain junctions were subsequently implanted and annealed. After a deoxidation dip in hydrofluoric acid, the samples were loaded in the e-gun evaporation system. An *in situ* Ar plasma etching was realized, and a 10-nm-thick Pt layer was evaporated [Fig. 3(a)]. The samples were subsequently annealed at 500 °C for 4 min in $N_2:H_2$ to form a 20 nm PtSi layer [Fig. 3(b)]. In order to transform the Pt in excess into the $PtGe_2$ phase, a 30-nm-thick Ge overlayer was subsequently deposited [Fig. 3(c)] and annealed at 300 °C

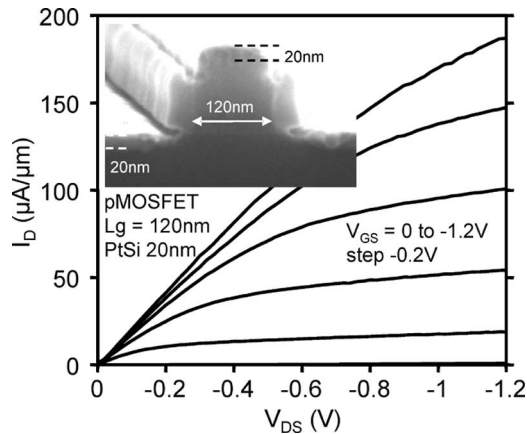


Fig. 4. Measured I_D - V_{DS} characteristics of a 120-nm-long p-type MOSFET with PtSi silicide contact. Inset: SEM cross-section of the electrically characterized device. As expected after silicidation from a 10-nm-thick Pt overlayer, a 20-nm-thick PtSi contact is present and left unaltered by the etching procedure using low-temperature germanidation and selective PtGe₂ removal in SPM.

5 min in N₂:H₂ [Fig. 3(d)]. As a final step, the selective etching of the PtGe₂ phase with respect to PtSi was realized using SPM [Fig. 3(e) and (f)].

The scalability and suitability of this process for MOSFETs devices was morphologically assessed using a 35-nm-gate-long transistor. Fig. 3(b) presents an aerial SEM characterization of the device after the platinum silicidation annealing step. It can be observed that large Pt grains appear on the SiO₂ STI zones and that a smooth PtSi is formed on the Si and poly-Si areas. Excess Pt is then transformed into the etchable PtGe₂ phase, after the deposition of the Ge overlayer and annealing, as shown in Fig. 3(d). Fig. 3(e) presents a top view SEM observation after a 5 min wet etch in SPM. The porous aspect of the PtGe₂ confirms that the material is being etched. After 10 min in SPM, any sign of chemical reaction (bubbling) at the sample surface vanishes, indicating that the etching of the PtGe₂ phase is completed. The corresponding SEM observation in Fig. 3(f) shows that the PtGe₂ was successfully removed from the SiO₂ areas, and that the PtSi regions do not present signs of chemical alteration. Finally, the inset of Fig. 4 shows an SEM cross section of a 120 nm device, demonstrating the successful formation of a 20-nm-thick PtSi layer of the gate, source, and drain contacts. It is also clearly observed that the Pt in excess has been successfully removed from the nitride spacers.

Fig. 4 presents the I_D - V_{DS} characteristics obtained on the 120-nm-gate-long device (transistors with shorter gate length

could not be characterized due to problems in the back-end steps). The electrical functionality of the device fabricated according to the present PtSi integration process is demonstrated. Devices originating from an identical process flow that feature nickel silicided contacts demonstrate a current drive of 210 $\mu\text{A}/\mu\text{m}$. Considering that the presented PtSi silicided junction can still be optimized, a promising current drive of 190 $\mu\text{A}/\mu\text{m}$ is obtained. The last result confirms that the proposed integration scheme of PtSi is viable and enables the safe integration of PtSi in advanced MOSFET technology.

IV. CONCLUSION

A new PtSi-safe etching procedure based on a sequence involving germanidation of Pt in excess and removal of the sacrificial PtGe₂ in SPM has been developed. PtSi source/drain contacts were integrated on a 120 nm device, showing the viability of the proposed process. The promising electrical characteristics confirm the expected benefits of PtSi as a contact silicide for the next-generation p-MOS technologies.

REFERENCES

- [1] K. Maex and M. van Rossum, *Properties of Metal Silicides*. London, U.K.: INSPEC, 1995.
- [2] M. J. Rand and J. F. Roberts, "Observations on the formation and etching of platinum silicide," *Appl. Phys. Lett.*, vol. 24, no. 2, pp. 49–51, Jan. 1974.
- [3] M. J. H. van Dal, G. Pourtois, J. Cunniffe, A. Veloso, A. Lauwers, K. Maex, and J. A. Kittl, "Effect of SIIIS on work function of self-aligned PtSi FUSI metal-gated capacitors," *IEEE Trans. Electron Devices*, vol. 53, no. 5, pp. 1180–1185, May 2006.
- [4] Z. Zhang, S. L. Zhang, M. Östling, and J. Lu, "Robust, scalable self-aligned platinum silicide process," *Appl. Phys. Lett.*, vol. 88, no. 4, pp. 142114-1–142114-3, 2006.
- [5] M. G. Grimaldi, L. Wielunski, M.-A. Nicolet, and K. N. Tu, "Germanide formation by thermal treatment of Pt films deposited on (100) single crystal Ge," *Thin Solid Films*, vol. 81, pp. 207–211, 1981.
- [6] E. D. Marshall, C. S. Wu, C. S. Pai, D. M. Scott, and S. S. Lau, "Metal-germanium contacts and germanide formation," in *Proc. Mater. Res. Soc. Symp.*, 1985, vol. 47, pp. 161–166.
- [7] Y. F. Hsieh and L. J. Chen, "Interfacial reactions of platinum thin films on (111) and (001) germanium," *J. Appl. Phys.*, vol. 63, no. 4, pp. 1177–1181, 1988.
- [8] H. B. Yao, C. C. Tan, S. L. Liew, C. T. Chua, C. K. Chua, R. Li, R. T. P. Lee, S. J. Lee, and D. Z. Chi, "Material and electrical characterization of Ni- and Pt-germanides for p-channel germanium Schottky source/drain transistors," in *Proc. IWJT*, 2006, pp. 164–169.
- [9] D. R. Lide, *CRC Handbook of Chemistry and Physics*. Boca Raton, FL: CRC Press, 1996.
- [10] D. Ikeno, Y. Kaneko, H. Kondo, M. Sakashita, A. Sakai, M. Ogawa, and S. Zaima, "Composition dependence of work function in metal (Ni,Pt)-germanide gate electrodes," *Jpn. J. Appl. Phys.*, pp. 1865–1869, 2007.