



**HAL**  
open science

## On barycentric subdivision, with simulations

Persi Diaconis, Laurent Miclo

► **To cite this version:**

Persi Diaconis, Laurent Miclo. On barycentric subdivision, with simulations. *Combinatorics, Probability and Computing*, 2011, 20 (2), pp.213-237. hal-00353842v2

**HAL Id: hal-00353842**

**<https://hal.science/hal-00353842v2>**

Submitted on 20 Jul 2010

**HAL** is a multi-disciplinary open access archive for the deposit and dissemination of scientific research documents, whether they are published or not. The documents may come from teaching and research institutions in France or abroad, or from public or private research centers.

L'archive ouverte pluridisciplinaire **HAL**, est destinée au dépôt et à la diffusion de documents scientifiques de niveau recherche, publiés ou non, émanant des établissements d'enseignement et de recherche français ou étrangers, des laboratoires publics ou privés.

# On barycentric subdivision, with simulations

Persi Diaconis<sup>†</sup> and Laurent Miclo<sup>‡</sup>

<sup>†</sup>Departments of Statistics and Mathematics  
Stanford University, USA

<sup>‡</sup>Institut de Mathématiques de Toulouse, UMR 5219  
Université de Toulouse and CNRS, France

We dedicate this paper to the memory of David Blackwell.

## Abstract

Consider the barycentric subdivision which cuts a given triangle along its medians to produce six new triangles. Uniformly choosing one of them and iterating this procedure gives rise to a Markov chain. We show that almost surely, the triangles forming this chain become flatter and flatter in the sense that their isoperimetric values goes to infinity with time. Nevertheless, if the triangles are renormalized through a similitude to have their longest edge equal to  $[0, 1] \subset \mathbb{C}$  (with 0 also adjacent to the shortest edge), their aspect does not converge and we identify the limit set of the opposite vertex with the segment  $[0, 1/2]$ . In addition we prove that the largest angle converges to  $\pi$  in probability. Our approach is probabilistic and these results are deduced from the investigation of a limit iterated random function Markov chain living on the segment  $[0, 1/2]$ . The stationary distribution of this limit chain is particularly important in our study. In an appendix we present related numerical simulations (not included in the version submitted for publication).

**Keywords:** barycentric subdivision, triangle-valued Markov chain, isoperimetric functional, flat triangles, iterated random functions, invariant probability measure, Wasserstein distance.

**MSC2000:** first: 60J05, secondary: 60D05, 60F15, 26A18, 28C10, 37A30.

# 1 Introduction

Let  $\Delta$  be a given triangle in the plane (to avoid triviality the vertices will always be assumed not to be all the same). The three medians of  $\Delta$  intersect at the barycenter, this cuts it into six small triangles, say  $\Delta_1, \Delta_2, \Delta_3, \Delta_4, \Delta_5, \Delta_6$ . Next, each  $\Delta_i$ , for  $i \in \llbracket 1, 6 \rrbracket$  (which denotes the set  $\{1, 2, \dots, 6\}$ ), can itself be subdivided in the same way into six triangles,  $(\Delta_{i,j})_{j \in \llbracket 1, 6 \rrbracket}$ . Iterating this barycentric subdivision procedure, we get  $6^n$  triangles  $(\Delta_I)_{I \in \llbracket 1, 6 \rrbracket^n}$  at stage  $n \in \mathbb{N}$ . It is well-known numerically (we learned it from Blackwell [2], see also the survey by Butler and Graham [3]) and has been recently proved (cf. Diaconis and McMullen [6] and Hough [8]) that as the barycentric subdivision goes on, most of the triangles become flat. The original motivation for this kind of result was to show that the barycentric subdivision is not a good procedure to construct nice triangularizations of surfaces. For more information on other kinds of triangle subdivisions, we refer to a recent manuscript of Butler and Graham [3]. The goal of this paper is to propose a new probabilistic approach to this phenomenon.

First, we adopt a Markovian point of view: Let  $\Delta(0) := \Delta$  and throw a fair die to choose  $\Delta(1)$  among the six triangles  $\Delta_i, i \in \llbracket 1, 6 \rrbracket$ . Continuing in the same way, we get a Markov chain  $(\Delta(n))_{n \in \mathbb{N}}$ : if the  $n^{\text{th}}$  first triangles have been constructed, the next one is obtained by choosing uniformly (and independently from what was done before) one of the six triangles of the barycentric subdivision of the last obtained triangle. Of course, at any time  $n \in \mathbb{N}^*$  ( $\mathbb{N}^*$  stands for  $\mathbb{N} \setminus \{0\}$ ), the law of  $\Delta(n)$  is the uniform distribution on the set of triangles  $\{\Delta_I : I \in \llbracket 1, 6 \rrbracket^n\}$ . So to deduce generic properties under this distribution it is sufficient to study the chain  $(\Delta(n))_{n \in \mathbb{N}}$ .

In order to describe our results more analytically, let us renormalize the triangles. For any non-trivial triangle  $\Delta$  on the plane, there is a similitude of the plane transforming  $\Delta$  into a triangle whose vertices are  $(0, 0)$ ,  $(0, 1)$  and  $(x, y) \in [0, 1/2] \times [0, \sqrt{3}/2]$ , such that the longest (respectively the shortest) edge of  $\Delta$  is sent to  $[(0, 0), (0, 1)]$  (resp.  $[(0, 0), (x, y)]$ ). The point  $(x, y)$  is uniquely determined and characterizes the aspect of  $\Delta$  (as long as orientation is not considered, otherwise we would have to consider positive similitudes and  $x$  would have to belong to  $[0, 1]$ ). Any time we are interested in quantities which are invariant by similitude, we will identify triangles with their characterizing points. In particular, this identification will endow the set of triangles with the topology (not separating triangles with the same aspect) inherited from the usual topology of the plane. This convention will implicitly be enforced throughout this paper. The triangle  $\Delta$  will be said to be flat if  $y = 0$ . So up to similitude the set of flat triangles can be identified with  $[0, 1/2]$ . For  $n \in \mathbb{N}$ , let  $(X_n, Y_n)$  be the characterizing point of  $\Delta(n)$ . The first result justifies the assertion that as the barycentric subdivision goes on, the triangles become flat.

**Theorem 1** *Almost surely (a.s.) the stochastic sequence  $(Y_n)_{n \in \mathbb{N}}$  converges to zero exponentially fast: there exists a constant  $\chi > 0$  such that a.s.:*

$$\limsup_{n \rightarrow \infty} \frac{1}{n} \ln(Y_n) \leq -\chi$$

We will show that we can take  $\chi = 0.035$  (but this is not the best constant, indeed we will present a numerical experiment suggesting that the above bound should hold with  $\chi \approx 0.07$ ), nevertheless the previous result remains asymptotical. But contrary to Blackwell [2] (see also the remark at the end of section 6), we have not been able to deduce a more quantitative bound in probability on  $Y_n$  for any given  $n \in \mathbb{N}$ .

In particular, we recover the convergence in probability toward the set of flat triangles which was previously proved by Diaconis and McMullen [6] (using Furstenberg theorem on products of random matrices in  $SL_2(\mathbb{R})$ ) and Hough [8] who used dynamical systems arguments (via an identification with a random walk on  $SL_2(\mathbb{R})$ ).

There is a stronger notion of convergence to flatness that asks for the triangles to have an angle which is almost equal to  $\pi$ . With the preceding notation, for  $n \in \mathbb{N}$ , let  $A_n$  be the angle between  $[(0, 0), (X_n, Y_n)]$  and  $[(X_n, Y_n), (0, 1)]$ , this is the largest angle of  $\Delta(n)$ .

**Theorem 2** *The sequence  $(\Delta(n))_{n \in \mathbb{N}}$  becomes strongly flat in probability:*

$$\forall \epsilon > 0, \quad \lim_{n \rightarrow \infty} \mathbb{P}[A_n < \pi - \epsilon] = 0$$

Of course this result implies that  $(Y_n)_{n \in \mathbb{N}}$  converges to zero in probability. Note that the converse is not true in general: there are isosceles triangles that become flatter and flatter, but their maximum angle converges to  $\pi/2$ . Indeed, Theorem 2 is more difficult to obtain than Theorem 1 because  $(X_n)_{n \in \mathbb{N}}$  does not converge as the next result shows. Define the limit set of this sequence as the intersection over  $p \in \mathbb{N}$  of the closures of the sets  $\{X_n : n \geq p\}$ .

**Theorem 3** *Almost surely, the limit set of  $(X_n)_{n \in \mathbb{N}}$  is  $[0, 1/2]$ .*

It follows from Theorem 1 that a.s. the limit set of a trajectory of the triangle Markov chain  $(\Delta(n))_{n \in \mathbb{N}}$  is the whole set of flat triangles.

A crucial tool behind these results is a limiting flat Markov chain  $Z$ . Strictly speaking the stochastic chain  $(X_n)_{n \in \mathbb{N}}$  is not Markovian, but eventually its evolution becomes almost Markovian. Indeed, we note that the above barycentric subdivision procedure can formally also be applied to flat triangles and their set is stable by this operation. This means that if  $Y_0 = 0$ , then for any  $n \in \mathbb{N}$ ,  $Y_n = 0$  a.s. In this particular situation  $(X_n)_{n \in \mathbb{N}}$  is Markovian. Let  $M$  be its transition kernel, from  $[0, 1/2]$  to itself. In what follows,  $Z := (Z_n)_{n \in \mathbb{N}}$  will always designate a Markov chain on  $[0, 1/2]$  whose transition kernel is  $M$ . An important part of this paper will be devoted to the investigation of the Markov chain  $Z$  since it is the key to the above asymptotic behaviour. We will see that  $Z$  is ergodic in the sense that it admits an attracting (and thus unique) invariant measure  $\mu$  on  $[0, 1/2]$ . We will also show that  $\mu$  is continuous and that its support is  $[0, 1/2]$  (but we don't know if  $\mu$  is absolutely continuous).

The plan of the paper is the following: the next section contains some global preliminaries, in particular we will show, by studying the evolution of a convenient variant of the isoperimetric value, that the triangle Markov chain returns as close as we want to the set of flat triangles infinitely often. This is a first step in the direction of Theorem 1. In section 3, we begin our investigation of the limiting Markov chain  $Z$ , to obtain some information valid in a neighborhood of the set of flat triangles. Then in section 4 we put together the previous global and local results to prove Theorem 1. Ergodicity and the attracting invariant measure  $\mu$  of the Markov chain  $Z$  are studied in section 5, using results of Dubins and Freedman [7], Barnsley and Elton [1] and Diaconis and Freedman [5] on iterated random functions. This will lead to the proofs of Theorem 2 and Theorem 3 in section 6. In an appendix we present some numerical experiments which helped us in some technical proofs. They will also illustrate the obtained results, in particular to evaluate the constant  $\chi$  of Theorem 1 and to see the profile of  $\mu$ .

## 2 A weak result on attraction to flatness

The purpose of this section is to give some preliminary information and bounds on the triangle Markov chain obtained by barycentric subdivisions. By themselves, these results are not sufficient to conclude the a.s. convergence toward the set of flat triangles, but at least they give a heuristic hint for this behaviour: a quantity comparable to the isoperimetry value of the triangle has a tendency to increase after barycentric subdivision and so to diverge to infinity with time, in the mean.

To measure the separation between a given triangle  $\Delta$  and the set of flat triangles, we use the quantity  $J(\Delta)$ , which is the sum of the squares of the lengths of the edges divided by the area (this is well-defined in  $(0, +\infty]$ , since the vertices are assumed not to be all the same). We have

$J(\Delta) = +\infty$  if and only if  $\Delta$  is flat. Furthermore the functional  $J$  is invariant under similitude, so it depends only on the characteristic point  $(x, y)$  of  $\Delta$  and we have

$$J(\Delta) = 2 \frac{1 + x^2 + y^2 + (1-x)^2 + y^2}{y} = 4 \frac{x^2 + y^2 - x + 1}{y}$$

in particular we get

$$3y \leq (J(\Delta))^{-1} \leq 8y \quad (1)$$

so that the convergence of  $y$  to zero is equivalent to the divergence of  $J(\Delta)$  to  $+\infty$ . Note that  $J(\Delta)$  is comparable with the isoperimetric value  $I(\Delta)$  of  $\Delta$ , defined as the square of the perimeter of  $\Delta$  divided by its area of  $\Delta$ :

$$\frac{1}{3}I(\Delta) \leq J(\Delta) \leq I(\Delta) \quad (2)$$

With the notation of the introduction, write for  $n \in \mathbb{N}$ ,  $J_n := J(\Delta(n))$ . Our first goal is to show

**Proposition 4** *Almost surely, we have  $\limsup_{n \rightarrow \infty} J_n = +\infty$ .*

The proof will be based on elementary considerations of one step of the barycentric subdivision. Consider  $\Delta$  a triangle in the normalized form given in the introduction. For simplicity, we denote  $A, B$  and  $C$  the vertices  $(0, 0)$ ,  $(x, y)$  and  $(1, 0)$  of  $\Delta$ . Let also  $D, E, F$  and  $G$  be respectively the middle points of  $[A, B]$ ,  $[B, C]$  and  $[A, C]$  and the barycenter of  $\Delta$ . We index the small triangles obtained by the barycentric subdivision as

$$\begin{aligned} \Delta_1 &:= \{A, D, G\}, & \Delta_2 &:= \{D, B, G\}, & \Delta_3 &:= \{B, E, G\} \\ \Delta_4 &:= \{E, C, G\}, & \Delta_5 &:= \{C, F, G\}, & \Delta_6 &:= \{F, A, G\} \end{aligned} \quad (3)$$

It is well-known that all the triangles  $\Delta_i$ , for  $i \in \llbracket 1, 6 \rrbracket$ , have the same area (one straightforward way to see it is to note that this property is invariant by affine transformations and to consider the equilateral case).

Next define, with  $|\cdot|$  denoting the length,

$$\begin{aligned} L_1 &:= |[A, B]|, & L_2 &:= |[B, C]|, & L_3 &:= |[C, A]| \\ l_1 &:= |[D, C]|, & l_2 &:= |[E, A]|, & l_3 &:= |[F, B]| \end{aligned}$$

An immediate computation gives that

$$l_1^2 = \frac{x^2}{4} + \frac{y^2}{4} - x + 1, \quad l_2^2 = \frac{x^2}{4} + \frac{y^2}{4} + \frac{x}{2} + \frac{1}{4}, \quad l_3^2 = x^2 + y^2 - x + \frac{1}{4} \quad (4)$$

so we get

$$\frac{l_1^2 + l_2^2 + l_3^2}{L_1^2 + L_2^2 + L_3^2} = \frac{3}{4}$$

These ingredients imply the following probabilistic statement:

**Lemma 5** *For any  $n \in \mathbb{N}$ , we have*

$$\mathbb{E}[J_{n+1} | \mathcal{T}_n] = \frac{4}{3} J_n$$

where the lhs is a conditional expectation with respect to  $\mathcal{T}_n$ , the  $\sigma$ -algebra generated by  $\Delta(n)$ ,  $\Delta(n-1)$ , ...,  $\Delta(0)$ .

**Proof**

By the Markov property, the above bound is equivalent to the fact that for any  $n \in \mathbb{N}$ ,

$$\mathbb{E}[J_{n+1}|\Delta(n)] = \frac{4}{3}J_n$$

Since the Markov chain  $(\Delta(n))_{n \in \mathbb{N}}$  is time-homogeneous, it is sufficient to deal with the case  $n = 0$ . We come back to the notation introduced above. Because the small triangles have the same area and the barycenter cuts the median segments into a ratio  $(1/3, 2/3)$ , we get that

$$\begin{aligned} \mathbb{E}[J(\Delta(1))|\Delta(0) = \Delta] &= \frac{1}{6} \sum_{i \in \llbracket 1, 6 \rrbracket} J(\Delta_i) \\ &= \frac{1}{6} \left( \frac{L_1^2}{2} + \frac{L_2^2}{2} + \frac{L_3^2}{2} + \frac{10}{9}(l_1^2 + l_2^2 + l_3^2) \right) \frac{6}{\mathcal{A}(\Delta)} \\ &= \frac{4}{3}J(\Delta) \end{aligned}$$

where  $\mathcal{A}(\Delta)$  is the area of  $\Delta$ . ■

In general the previous submartingale information is not enough to deduce a.s. convergence. Taking expectations, we get that for any  $n \in \mathbb{N}$ ,  $\mathbb{E}[J_{n+1}] \geq (4/3)\mathbb{E}[J_n]$ , thus  $\mathbb{E}[J_n] \geq (4/3)^n J(\Delta)$ , so we can just deduce  $\mathbb{L}^1$ -divergence of  $J_n$  for large  $n \in \mathbb{N}$ , but this is not a very useful result.

To prove Proposition 4, note that the numbers  $J_n$ ,  $n \in \mathbb{N}$ , are uniformly bounded below by a positive constant. Indeed the isoperimetric functional can be defined for relatively general bounded subsets of the plane and its minimal value is obtained for discs (cf. for instance Osserman [9]). Thus, via (2), we get

$$\forall n \in \mathbb{N}, \quad J_n \geq \frac{4}{3}\pi > 4$$

But from Lemma 5, we see that

$$\forall n \in \mathbb{N}, \quad \mathbb{P}[J_{n+1} \geq (4/3)J_n | \mathcal{T}_n] \geq \frac{1}{6}$$

and consequently

$$\forall n, m \in \mathbb{N}, \quad \mathbb{P}[J_{n+m} \geq (4/3)^m 4 | \mathcal{T}_n] \geq \frac{1}{6^m} \tag{5}$$

Let  $R > 1$  be an arbitrary large number and consider  $m \in \mathbb{N}^*$  such that  $(4/3)^m 4 \geq R$ . The  $\{0, 1\}$ -valued sequence  $(\mathbb{1}_{J_{m(n+1)} \geq R})_{n \in \mathbb{N}}$  stochastically dominates a sequence of independent Bernoulli variables of parameter  $1/6^m$ . It follows that a.s. we have

$$\limsup_{n \rightarrow \infty} J_n \geq R$$

and since  $R$  can be chosen arbitrarily large, Proposition 4 is proven. ■

To finish this section, we will prove another simple preliminary result.

**Lemma 6** *There exists two constants  $0 < a < b < +\infty$  such that*

$$\forall n \in \mathbb{N}, \quad aJ_n \leq J_{n+1} \leq bJ_n$$

**Proof**

Again it is sufficient to consider the first barycentric subdivision and to prove that we can find two constants  $0 < a < b < +\infty$  such that with the above notation,

$$\forall i \in \llbracket 1, 6 \rrbracket, \quad aJ(\Delta) \leq J(\Delta_i) \leq bJ(\Delta)$$

Such inequalities are obvious for flat triangles, so assume that  $\Delta$  is not flat. Since the areas are easy to compare, we just need to consider the diameters (whose squares are comparable, within the range  $[1, 3]$ , with the sums of the squares of the lengths of the edges), denoted by  $d$ . We have clearly  $d(\Delta) = 1$  and  $d(\Delta_i) \leq 1$  for  $i \in \llbracket 1, 6 \rrbracket$ . The reverse bound  $d(\Delta_i) \geq 1/4$ , for  $i \in \llbracket 1, 6 \rrbracket$ , is a consequence of the equalities  $|[A, F]| = |[F, C]| = 1/2$ ,  $|[B, E]| = |[E, C]| \geq 1/2$  and  $|[D, G]| = |[G, C]|/2 \geq 1/4$ . ■

### 3 Near the limit flat Markov chain

Our goal here is two-fold. First we show that the kernel of the triangle Markov chain converges nicely to the kernel of the flat triangle Markov chain as the triangle becomes flat. Second we study the evolution of a perimeter related functional for the flat triangle Markov chain, to get a bound on the evolution of the isoperimetric functional for the triangle Markov chain, valid at least in a neighborhood of the set of flat triangles.

Let  $Q$  be the transition kernel of the Markov chain  $(X_n, Y_n)_{n \in \mathbb{N}}$  considered in the introduction. For any  $(x, y) \in \mathcal{D}$ , the set of characterizing points of triangles, we can write

$$Q((x, y), \cdot) = \frac{1}{6} \sum_{i \in \llbracket 1, 6 \rrbracket} \delta_{(x_i, y_i)}$$

where  $\delta$  stands for the Dirac mass and where for any  $i \in \llbracket 1, 6 \rrbracket$ ,  $(x_i, y_i)$  is the characterizing point of the triangle  $\Delta_i$  described in (3). Of course, the  $x_i$  and  $y_i$ , for  $i \in \llbracket 1, 6 \rrbracket$ , have to be seen as functions of  $(x, y)$ . For  $i \in \llbracket 1, 6 \rrbracket$ , let us define

$$\forall x \in [0, 1/2], \quad z_i(x) := x_i(x, 0) \tag{6}$$

The transition kernel  $M$  on  $[0, 1/2]$  of the flat triangle Markov chain alluded to in the introduction can be expressed as

$$\forall x \in [0, 1/2], \quad M(x, \cdot) = \frac{1}{6} \sum_{i \in \llbracket 1, 6 \rrbracket} \delta_{z_i(x)} \tag{7}$$

The next result gives bounds on the discrepancy between  $Q$  and  $M$  as the triangles become flat.

**Lemma 7** *There exists a constant  $K > 0$  such that*

$$\forall i \in \llbracket 1, 6 \rrbracket, \forall (x, y) \in \mathcal{D}, \quad \max(|x_i(x, y) - z_i(x)|, |y_i(x, y)|) \leq Ky$$

**Proof**

We first check that for any fixed  $i \in \llbracket 1, 6 \rrbracket$ , the mapping

$$\mathcal{D}_2 \ni (x, y^2) \mapsto (x_i(x, y), y_i^2(x, y)) \in \mathcal{D}_2 \tag{8}$$

is (uniformly) Lipschitz, where  $\mathcal{D}_2$  is the image of  $\mathcal{D}$  through  $\mathcal{D} \ni (x, y) \mapsto (x, y^2) \in \mathcal{D}_2$ .

Indeed, denote by  $0 \leq L_{i,1} \leq L_{i,2} \leq L_{i,3}$  the ordered lengths of the triangle  $\Delta_i$ . We have seen in the previous section that

$$y_i^2 = \frac{L_{i,1}^2 + L_{i,2}^2 + L_{i,3}^2}{2L_{i,3}^2} - x_i^2 + x_i - 1 \quad (9)$$

Let  $h_i$  be the height of  $\Delta_i$  orthogonal to the edge of length  $L_{i,3}$ , we have  $L_{i,1}^2 = h_i^2 + (x_i L_{i,3})^2$  and  $L_{i,2}^2 = h_i^2 + ((1 - x_i)L_{i,3})^2$ . It follows that

$$x_i = \frac{L_{i,3}^2 - L_{i,2}^2 + L_{i,1}^2}{2L_{i,3}^2} \quad (10)$$

Finally, notice that (4) implies that the mappings  $\mathcal{D}_2 \ni (x, y^2) \mapsto L_{i,j}^2$ , for  $j \in \llbracket 1, 3 \rrbracket$ , are uniformly Lipschitz. Furthermore, as seen in the proof of Lemma 6, the mapping  $\mathcal{D}_2 \ni (x, y^2) \mapsto L_{i,3}^2$  is bounded below by  $1/16$ , so (10) and (9) imply that the mapping described in (8) is uniformly Lipschitz.

The bounds given in Lemma 7 are an easy consequence of this Lipschitz property and of the boundedness of  $\mathcal{D}$ . ■

The second goal of this section is to study the sign of quantities like  $\mathbb{E}[\ln(I_{n+1}/I_n) | \Delta(n) = \Delta]$ , at least when  $\Delta$  is close to a flat triangle. Here we define  $I_n$  as the isoperimetric value of  $\Delta(n)$ . By the Markov property, this amounts to evaluating the sign of  $1/6 \sum_{i \in \llbracket 1, 6 \rrbracket} \ln(I(\Delta_i)/I(\Delta))$ . Of course the previous ratios are not rigorously defined if the triangle  $\Delta$  is flat, Nevertheless, let  $(x, y)$  be the characterizing point of  $\Delta$ . When  $y$  goes to zero  $0_+$ ,  $I(\Delta_i)/I(\Delta) = \sqrt{6}\mathcal{P}(\Delta_i)/\mathcal{P}(\Delta)$  converges to  $G(i, x)$ , which is just the same ratio for the flat triangle  $\Delta$  whose characterizing point is  $(x, 0)$ . We have, for any  $x \in [0, 1/2]$  (see the computations of section 5 for more details)

$$\begin{aligned} G(1, x) &= \sqrt{\frac{2}{3}}(1 + x), & G(2, x) &= \sqrt{\frac{1}{6}}(2 - x) \\ G(3, x) &= \sqrt{\frac{3}{2}}(1 - x), & G(4, x) &= \sqrt{\frac{2}{3}}(2 - x) \\ G(5, x) &= \sqrt{\frac{2}{3}}(2 - x), & G(6, x) &= \sqrt{\frac{3}{2}} \end{aligned} \quad (11)$$

From the previous considerations, we easily get that this convergence is uniform over  $x$ , in the sense that for any  $i \in \llbracket 1, 6 \rrbracket$ ,

$$\lim_{y \rightarrow 0_+} \sup_{(x, y) \in \mathcal{D}} \left| \frac{I(\Delta_i)}{I(\Delta)} - G(i, x) \right| = 0$$

So to prove that  $\mathbb{E}[\ln(I_{n+1}/I_n) | \Delta(n) = \Delta] > 0$  for nearly flat triangles  $\Delta$ , it is sufficient to show that the mapping  $[0, 1/2] \ni x \mapsto \sum_{i \in \llbracket 1, 6 \rrbracket} \ln(G(i, x))$  only takes positive values. Unfortunately, this is not true, since it takes negative values in a neighborhood of  $1/2$  (see section 7). To get around this problem, we iterate the barycentric subdivision one more step.

**Proposition 8** *There exist a constant  $\gamma > 0$  and a neighborhood  $\mathcal{N}$  of the set of the flat triangles, such that*

$$\forall n \in \mathbb{N}, \forall \Delta \in \mathcal{N}, \quad \mathbb{E}[\ln(I_{n+2}/I_n) | \Delta(n) = \Delta] \geq \gamma$$

(for flat triangles  $\Delta$ , the ratio is defined as a limit as above, or equivalently, as a ratio of perimeters, before renormalisation, up to the factor 6).



## Proof

Coming back to the notation at the beginning of the introduction, we want to find  $\mathcal{N}$  and  $\gamma$  as above and satisfying

$$\forall \Delta \in \mathcal{N}, \quad \frac{1}{36} \sum_{i,j \in \llbracket 1,6 \rrbracket} \ln \left( \frac{6\mathcal{P}(\Delta_{i,j})}{\mathcal{P}(\Delta)} \right) \geq \gamma \quad (12)$$

Let  $(x, y)$  be the characterizing point of  $\Delta$ . As  $y$  goes to  $0_+$ , the left hand side converges (uniformly over  $x$ ) to

$$F(x) := \frac{1}{36} \sum_{i,j \in \llbracket 1,6 \rrbracket} \ln(G(j, z_i(x))G(i, x)) \quad (13)$$

where the  $z_i(x)$ , for  $i \in \llbracket 1,6 \rrbracket$ , were defined in (6). More explicitly, we will compute in section 5 (see Lemma 12) that on each of the segments  $[0, 1/5]$ ,  $[1/5, 2/7]$  and  $[2/7, 1/2]$ , the  $z_i$ , for  $i \in \llbracket 1,6 \rrbracket$ , are homographical mappings. So it seems more convenient to consider the piecewise rational fraction

$$\begin{aligned} R(x) &:= \exp(36F(x)) \\ &= \prod_{i,j \in \llbracket 1,6 \rrbracket} G(i, z_j(x))G(j, x) \end{aligned} \quad (14)$$

After computations (see section 7), it appears that this is indeed a piecewise polynomial function. By numerically studying the zeroes of  $R - 1$  of the three underlying polynomial functions, we show that  $F$  does not vanish on  $[0, 1/2]$ . So by continuity, we get that  $\gamma := \min_{[0, 1/2]} F/2 > 0$ . Then using the above uniform convergence, we can find a neighborhood  $\mathcal{N}$  of the set of flat triangles so that (12) is fulfilled. ■

We will see more precisely in section 7 that  $F$  is decreasing, so we can take  $\gamma = F(1/2)/2 \approx 0.035$ .

## 4 Almost sure convergence to flatness

We are now in position to prove Theorem 1. The principle behind the proof is that there is a neighborhood  $\mathcal{N}'$  of the set of flat triangles such that if the triangle Markov chain is inside  $\mathcal{N}'$ , then it has a positive probability to always stay in this neighborhood and then to converge exponentially fast to the set of flat triangles. This event will eventually occur, since triangle Markov chains always return to  $\mathcal{N}'$ .

In order to see that the triangle Markov chain has a positive chance to remain trapped in a neighborhood of the set of flat triangles, we will use a general martingale argument. To do so, we introduce some notation. On some underlying probability space, let  $(\mathcal{F}_n)_{n \in \mathbb{N}}$  be a filtration, namely a non-decreasing sequence of  $\sigma$ -algebras. Let  $\gamma > 0$  and  $A > 0$  be two given constants. We assume that for any  $R$  large enough, say  $R \geq R_0 > 0$ , we are given a chain  $(V_n^{(R)})_{n \in \mathbb{N}}$  and a martingale  $(N_n^{(R)})_{n \in \mathbb{N}}$ , adapted to the filtration  $(\mathcal{F}_n)_{n \in \mathbb{N}}$ , satisfying  $V_0^{(R)} = R$ ,  $N_0^{(R)} = 0$  and such that for any time  $n \in \mathbb{N}$ ,

$$\left| N_{n+1}^{(R)} - N_n^{(R)} \right| \leq A \quad (15)$$

$$V_{n+1}^{(R)} - V_n^{(R)} \geq \gamma + N_{n+1}^{(R)} - N_n^{(R)} \quad (16)$$

The next result shows that if  $R$  is large enough, with high probability  $V^{(R)}$  will never go below  $R/2$ . This is classical, but without a precise reference at hand, we recall the underlying arguments.

**Lemma 9** *We have*

$$\mathbb{P}[\exists n \in \mathbb{N} : V_n^{(R)} < R/2] \leq \exp(-\gamma R/(2A^2)) \frac{1}{1 - \exp(-\gamma^2/(2A))}$$

and furthermore, a.s.,

$$\liminf_{n \rightarrow \infty} \frac{V_n^{(R)}}{n} \geq \gamma$$

**Proof**

The first estimate is an immediate consequence of the Hoeffding-Azuma inequality, which, applied to the bounded difference martingale  $(-N_n^{(R)})_{n \in \mathbb{N}}$  starting from 0, asserts that for any  $t \in \mathbb{R}_+$ ,

$$\forall n \in \mathbb{N}^*, \quad \mathbb{P}[-N_n^{(R)} > t] \leq \exp(-t^2/(2nA^2))$$

In particular, since for any  $n \in \mathbb{N}$ , we have

$$V_n^{(R)} \geq R + n\gamma + N_n^{(R)} \tag{17}$$

we get

$$\begin{aligned} \mathbb{P}[V_n^{(R)} < R/2] &\leq \mathbb{P}[-N_n^{(R)} > R/2 + n\gamma] \\ &\leq \exp\left(-\frac{R}{4nA^2} - \frac{R\gamma}{2A^2} - \frac{n\gamma^2}{2A^2}\right) \\ &\leq \exp\left(-\frac{R\gamma}{2A^2}\right) \exp\left(-\frac{n\gamma^2}{2A^2}\right) \end{aligned}$$

and the first announced bound follows by summation over  $n \in \mathbb{N}^*$ .

The second bound is also due to the fact that the increments of the martingale  $N^{(R)}$  are bounded, which implies the validity of the iterated logarithm law (see for instance Stout [10]): a.s.,

$$\limsup_{n \rightarrow \infty} \frac{|N_n^{(R)}|}{\sqrt{n \ln(\ln(n))}} \leq A$$

thus (17) enables us to conclude. ■

Lemma 9 will be applied with  $V^{(R)}$  the logarithm of isoperimetric values, or rather with a sequence of the kind  $(\ln(I_{2n}))_{n \in \mathbb{N}}$ .

More precisely, consider the neighborhood  $\mathcal{N}$  obtained in Proposition 8. There exists a small constant  $\epsilon > 0$  such that  $\mathcal{N}$  contains  $\{(x, y) \in \mathcal{D} : 0 \leq y < \epsilon\}$  and so taking into account (1), there exists  $R_1 > 1$  such that  $\{\Delta : \ln(I(\Delta)) > R_1\} \subset \mathcal{N}$  (again we are slightly abusing notation here, identifying triangles with the characterizing points of their normalized forms, this should not lead to confusion). Let  $T$  be a finite stopping time for the triangle Markov chain  $(\Delta(n))_{n \in \mathbb{N}}$ . Assume that  $R := \ln(I(\Delta(T)))$  satisfies  $R \geq 2R_1$ . Define a stopping time  $\tau$  for the shifted chain  $(\Delta(T + 2n))_{n \in \mathbb{N}}$  by

$$\tau := \inf\{n \in \mathbb{N} : \ln(I(\Delta(T + 2n))) \leq R_1\}$$

which is infinite if the set on the r.h.s. is empty. Let  $\gamma > 0$  be the constant appearing in Proposition 8. We construct a stochastic chain  $V^{(R)}$  in the following way:

$$\forall n \in \mathbb{N}, \quad V_n^{(R)} := \begin{cases} \ln(I(\Delta(T + 2n))) & , \text{ if } n \leq \tau \\ \ln(I(\Delta(T + 2\tau))) + \gamma(n - \tau) & , \text{ otherwise} \end{cases}$$

Let us check that the assumptions for Lemma 9 are satisfied. Following the traditional Doob-Meyer semi-martingale decomposition (see for instance Dellacherie and Meyer [4]), we define

$$\forall n \in \mathbb{N}, \quad N_n^{(R)} := \sum_{m \in [1, n]} V_m^{(R)} - \mathbb{E}[V_m^{(R)} | \mathcal{F}_{m-1}]$$

where for any  $n \in \mathbb{N}$ ,  $\mathcal{F}_n$  is the  $\sigma$ -algebra generated by the trajectory-valued variable  $(\Delta(m \wedge (T + n)))_{m \in \mathbb{N}}$ . Using classical stopping time notation, this is the  $\sigma$ -algebra  $\mathcal{T}_{T+n}$ , where the filtration  $(\mathcal{T}_m)_{m \in \mathbb{N}}$  was introduced in Lemma 5. After conditioning on  $\mathcal{F}_0$  and taking advantage of the strong Markov property, we can apply Lemma 6 to see that (15) is satisfied with  $A = (b/a)^2$  (we even have  $N_{n+1}^{(R)} - N_n^{(R)} = 0$  for  $n \geq \tau$ ). Furthermore, we have for any  $n \in \mathbb{N}$ ,

$$\begin{aligned} V_{n+1}^{(R)} - V_n^{(R)} &= \mathbb{E}[V_{n+1}^{(R)} | \mathcal{F}_n] - V_n^{(R)} + V_{n+1}^{(R)} - \mathbb{E}[V_{n+1}^{(R)} | \mathcal{F}_n] \\ &= \mathbb{E}[V_{n+1}^{(R)} - V_n^{(R)} | \mathcal{F}_n] + N_{n+1}^{(R)} - N_n^{(R)} \\ &= \mathbb{E}[\ln(I_{T+2(n+1)}/I_{T+2n}) | \Delta(T+2n)] \mathbb{1}_{n \leq \tau} + \gamma \mathbb{1}_{n > \tau} + N_{n+1}^{(R)} - N_n^{(R)} \\ &\geq \gamma + N_{n+1}^{(R)} - N_n^{(R)} \end{aligned}$$

where the last inequality comes from Proposition 8. Then Lemma 9 implies that

**Proposition 10** *Let  $\mathcal{N}' := \{\Delta : \ln(I(\Delta)) > R_1\}$ . There exists a large enough constant  $R_2 \geq 2R_1$  such that for any finite stopping time  $T$  for the triangle Markov chain  $(\Delta(n))_{n \in \mathbb{N}}$  satisfying  $\ln(I(\Delta(T))) \geq R_2$ , we have*

$$\mathbb{P}[\exists n \in \mathbb{N} : \Delta(T+n) \notin \mathcal{N}' | \mathcal{T}_T] < 1/2$$

Furthermore on the event  $\{\forall n \in \mathbb{N} : \Delta(T+n) \in \mathcal{N}'\}$ , we have a.s.

$$\liminf_{n \rightarrow \infty} \frac{\ln(I_n)}{n} \geq \gamma/2$$

Indeed, Lemma 9 shows that we can find  $R_2 \geq 2R_1$  such that

$$\mathbb{P}[\tau < \infty | \mathcal{T}_T] = \mathbb{P}[\exists n \in \mathbb{N} : \Delta(T+2n) \notin \mathcal{N}' | \mathcal{T}_T] < 1/2$$

On the event  $\{\forall n \in \mathbb{N} : \Delta(T+2n) \in \mathcal{N}'\}$ , we have a.s.

$$\liminf_{n \rightarrow \infty} \frac{\ln(I_{T+2n})}{n} \geq \gamma$$

Lemma 6 permits extending these results to the statement of Proposition 10 (up to replacement of  $R_2$  by  $bR_2/a$ ).

Now the proof of Theorem 1 is clear. By iteration, introduce two sequences  $(S_n)_{n \in \mathbb{N}}$  and  $(T_n)_{n \in \mathbb{N}}$  of stopping times for the triangle Markov chain: start with  $S_0 = 0$  and for any  $n \in \mathbb{N}$ , if  $S_n$  has been defined, take

$$\begin{aligned} T_n &:= \inf\{m > S_n : \ln(I(\Delta(m))) > R_2\} \\ S_{n+1} &:= \inf\{m > T_n : \ln(I(\Delta(m))) < R_1\} \end{aligned}$$

Of course, if for some  $n \in \mathbb{N}$ ,  $S_n = \infty$  then for any  $m \geq n$ ,  $S_m = T_m = \infty$ . Conversely, via Proposition 4, we see that if  $S_n < \infty$ , then a.s.,  $T_n < +\infty$ , so the events  $\{S_n < \infty\}$  and  $\{T_n < \infty\}$  are the same, up to a negligible set. For  $n \in \mathbb{N}$ , let us define the event

$$\begin{aligned} E_n &:= \{S_n < \infty \text{ and } S_{n+1} = \infty\} \\ &= \{T_n < \infty \text{ and } \forall m \in \mathbb{N}, \Delta(T_n + m) \in \mathcal{N}'\} \end{aligned}$$

Up to conditioning on  $\{S_n < \infty\}$ , Lemma 10 shows that

$$\mathbb{P}[S_{n+1} = \infty | S_n < \infty] = \mathbb{P}[E_n | S_n < \infty] \geq 1/2$$

thus it follows easily that  $\mathbb{P}[\cup_{n \in \mathbb{N}} E_n] = 1$ . Lemma 10 also shows that on all the  $E_n$ , the sequence  $(I_m^{-1})_{m \in \mathbb{N}}$  converges exponentially fast to zero with rate at least  $\gamma$ . Now the bound (1) implies the validity of Theorem 1 with  $\chi = \gamma/2$ .

**Remark 11** Let  $\gamma_2 := F(1/2) = \min_{x \in [0, 1/2]} F(x)$ . A closer look at the proof of Proposition 8 shows that for any  $\gamma < \gamma_2$ , we can find a neighborhood  $\mathcal{N}$  of the set of flat triangles such that the lower bound of Proposition 8 is satisfied. By the above arguments, it follows that Theorem 1 also holds with  $\chi = \gamma_2/2$ , so we win a factor  $1/2$ .

But one can go further. For  $N \in \mathbb{N} \setminus \{0, 1\}$  and  $x \in [0, 1/2]$ , consider

$$\begin{aligned} F_N(x) &:= \frac{1}{6^N} \sum_{(i_1, \dots, i_N) \in \llbracket 1, 6 \rrbracket^N} \ln(G(i_N, z_{i_{N-1}} \circ \dots \circ z_{i_1}(x)) \cdots G(i_2, z_{i_1}(x)) G(i_1, x)) \\ &= \mathbb{E}_x \left[ \sum_{n \in \llbracket 0, N-1 \rrbracket} \ln(G(I_{n+1}, Z_n)) \right] \end{aligned}$$

where  $(\iota_n)_{n \in \mathbb{N}^*}$  is a sequence of independent random variables uniformly distributed on  $\llbracket 1, 6 \rrbracket$  and  $(Z_n)_{n \in \mathbb{N}}$  is the Markov chain starting from  $x$  ( $Z_0 := x$ ) constructed from  $(\iota_n)_{n \in \mathbb{N}^*}$  through the relations

$$\forall n \in \mathbb{N}, \quad Z_{n+1} := z_{\iota_{n+1}}(Z_n) \quad (18)$$

Then define

$$\gamma_N := \min_{x \in [0, 1/2]} F_N(x)$$

An easy extension of the previous proof shows that Theorem 1 holds with  $\chi = \gamma_N/N$  and consequently with  $\chi = \lim_{N \rightarrow \infty} \gamma_N/N$ . The quantity  $\gamma_N/N$  converges due to the weak convergence of the Markov chain  $(Z_n)_{n \in \mathbb{N}}$ , uniformly in its initial distribution, as we will show in the next section. Indeed, if  $\mu$  is the attracting invariant probability associated to  $(Z_n)_{n \in \mathbb{N}}$ , we will see that for any  $x \in [0, 1/2]$ ,

$$\lim_{n \rightarrow \infty} \mathbb{E}_x [\ln(G(\iota_{n+1}, Z_n))] = L$$

with

$$L := \frac{1}{6} \sum_{i \in \llbracket 1, 6 \rrbracket} \int \ln(G(i, x)) \mu(dx) \quad (19)$$

It follows from Cesaro's lemma that

$$\begin{aligned} \lim_{n \rightarrow \infty} \frac{F_N(x)}{N} &= \lim_{n \rightarrow \infty} \frac{1}{N} \sum_{n \in \llbracket 0, N-1 \rrbracket} \mathbb{E}_x [\ln(G(\iota_{n+1}, Z_n))] \\ &= L \end{aligned}$$

Since this convergence holds uniformly in  $x \in [0, 1/2]$ , we get that Theorem 1 is satisfied with  $\chi = L$ . In section 7, we will numerically evaluate that  $L \approx 0.07$ . □

## 5 Ergodicity of the limit flat Markov chain

This section studies the limit flat Markov chain  $Z := (Z_n)_{n \in \mathbb{N}}$ . First we will see that it admits a unique invariant probability  $\mu$  and that it converges exponentially fast to  $\mu$  in the Wasserstein distance. Next we will show that  $\mu$  is continuous and that its support is the whole state space  $[0, 1/2]$ .

We begin by describing the kernel of  $Z$  given in (7) in the language of iterated random functions.

**Lemma 12** *With the notation of the previous sections, we have for all  $x \in [0, 1/2]$ ,*

$$\begin{aligned} z_1(x) &= \frac{3x}{2+2x} & z_2(x) &= \frac{3x}{2-x} \mathbb{1}_{x < 2/7} + \frac{2-4x}{2-x} \mathbb{1}_{x \geq 2/7} \\ z_3(x) &= \frac{1+x}{3-3x} \mathbb{1}_{x < 1/5} + \frac{2-4x}{3-3x} \mathbb{1}_{x \geq 1/5} & z_4(x) &= \frac{1+x}{4-2x} \\ z_5(x) &= \frac{1-2x}{4-2x} & z_6(x) &= \frac{1-2x}{3} \end{aligned}$$

### Proof

These are immediate computations, based on the fact that for any flat triangle, the abscissa of the characteristic point is the ratio of the shortest edge by the longest edge. For instance the lengths of the edges of the triangle  $\Delta_2$  are  $L_1/2$ ,  $l_1/3$  and  $2l_3/3$  with  $L_1 = x$ ,  $l_1 = 1 - \frac{x}{2}$  and  $l_3 = \frac{1}{2} - x$ , which leads to the above expression for  $z_2(x)$ . ■

To see that the Markov kernel  $M$  of  $Z$  is ergodic, in the sense that it admits an invariant and attracting probability, we apply a result due to Barnsley and Elton [1]: let  $S$  be a compact segment of  $\mathbb{R}$  (more generally it can be a complete, separable metric space) on which we are given  $n$  Lipschitz functions  $f_i : S \rightarrow S$ , for  $i \in \llbracket 1, n \rrbracket$ . Let  $p = (p_i)_{i \in \llbracket 1, n \rrbracket}$  be a probability on  $\llbracket 1, n \rrbracket$  and consider the Markov kernel  $N$  from  $S$  to  $S$  given by

$$\forall x \in S, \quad N(x, \cdot) := \sum_{i \in \llbracket 1, n \rrbracket} p_i \delta_{f_i(x)} \quad (20)$$

Then under the assumption that there exists a constant  $r < 0$  such that

$$\forall x \neq y \in S, \quad \sum_{i \in \llbracket 1, n \rrbracket} p_i \ln \left( \frac{|f_i(y) - f_i(x)|}{|y - x|} \right) \leq r \quad (21)$$

the kernel  $N$  is ergodic: it admits a unique invariant and attracting probability  $\mu$ , satisfying  $\mu N = \mu$  and for any probability  $\nu$  on  $S$ ,  $\lim_{n \rightarrow \infty} \nu N^n = \mu$  (in the weak topology). Furthermore, Barnsley and Elton [1] show that there exists  $q \in (0, 1]$  and  $\rho \in (0, 1)$  such that

$$\forall x, y \in S, \quad \sum_{i \in \llbracket 1, n \rrbracket} p_i |f_i(y) - f_i(x)|^q \leq \rho |y - x|^q \quad (22)$$

Let us rewrite this bound in a more probabilistic way. Let  $(\iota_n)_{n \in \mathbb{N}}$  be a sequence of independent random variables taking values in  $\llbracket 1, n \rrbracket$  with distribution  $(p_i)_{i \in \llbracket 1, n \rrbracket}$ . For any  $x \in S$ , we denote by  $U^x := (U_n^x)_{n \in \mathbb{N}}$  the stochastic chain constructed as follow:  $U_0^x = x$  and for any  $n \in \mathbb{N}$ ,  $U_{n+1}^x = f_{\iota_{n+1}}(U_n^x)$ . This is a Markov chain with transition kernel  $N$ . This construction enables us to couple together all the Markov chains  $U^x$ , for  $x \in S$ . Then the above bound can be written

$$\forall x, y \in S, \quad \mathbb{E}[|U_1^y - U_1^x|^q] \leq \rho |y - x|^q$$

and admits an immediate extension:

$$\forall n \in \mathbb{N}, \forall x, y \in S, \quad \mathbb{E}[|U_n^y - U_n^x|^q] \leq \rho^n |y - x|^q$$

This leads us to consider the Wasserstein distance  $D$  between probability measures on  $S$ : if  $\nu_1$  and  $\nu_2$  are two such measures,

$$D(\nu_1, \nu_2) := \sup_{f \in \mathcal{L}(1)} |\nu_1[f] - \nu_2[f]|$$

where  $\mathcal{L}(1)$  is the set of Lipschitz functions on  $S$  whose Lipschitz constant is less (or equal) than 1. We may now show that

**Lemma 13** *Under the above assumption (21), we have for any  $n \in \mathbb{N}$  and any  $x \in S$ ,*

$$D(N^n(x, \cdot), \mu) \leq \text{diam}(S)\rho^n$$

where  $\rho$  and  $q$  are as in (22) and  $\text{diam}(S)$  is the diameter of  $S$ . It follows that  $U^x$  satisfies the law of large numbers: for any continuous function  $f$  on  $S$ , we have a.s.,

$$\lim_{N \rightarrow \infty} \frac{1}{N+1} \sum_{n \in \llbracket 0, N \rrbracket} f(U_n^x) = \mu[f] \quad (23)$$

**Proof**

Let  $f \in \mathcal{L}(1)$ . We compute that

$$\begin{aligned} |N^n(x, f) - \mu[f]| &= \left| \int \mu(dy) (N^n(x, f) - N^n(y, f)) \right| \\ &\leq \sup_{x, y \in S} |N^n(x, f) - N^n(y, f)| \\ &= \sup_{x, y \in S} |\mathbb{E}[f(U_n^x) - f(U_n^y)]| \\ &\leq \sup_{x, y \in S} \mathbb{E}[|U_n^x - U_n^y|] \\ &= \text{diam}(S) \sup_{x, y \in S} \mathbb{E} \left[ \frac{|U_n^x - U_n^y|}{\text{diam}(S)} \right] \\ &\leq \text{diam}(S) \sup_{x, y \in S} \mathbb{E} \left[ \left| \frac{U_n^x - U_n^y}{\text{diam}(S)} \right|^q \right] \\ &\leq \text{diam}(S)^{1-q} \sup_{x, y \in S} \rho^n |y - x|^q \\ &\leq \text{diam}(S)\rho^n \end{aligned}$$

The announced bound follows by taking the supremum over all functions  $f \in \mathcal{L}(1)$ . The law of large numbers is deduced from a traditional martingale argument based on the existence of a bounded solution to the Poisson equation. More precisely, for  $f \in \mathcal{L}(1)$ , we can define

$$\forall x \in S, \quad \varphi(x) := \sum_{n \in \mathbb{N}} \mathbb{E}[f(U_n^x) - \mu[f]]$$

since the r.h.s. converges exponentially fast and uniformly with respect to  $x \in S$ . Furthermore we easily see that  $\varphi$  is a Lipschitz function and that it is a solution to the Poisson equation

$$\begin{cases} \forall x \in S, & \varphi(x) - N(x, \varphi) = f(x) - \mu[f] \\ & \mu[\varphi] = 0 \end{cases}$$

This enables us to write for any  $n \in \mathbb{N}$ ,

$$f(X_0) + f(X_1) + \cdots + f(X_n) = (n+1)\mu[f] + \varphi(X_0) - \varphi(X_{n+1}) + \mathcal{M}_{n+1}$$

where  $(\mathcal{M}_n)_{n \in \mathbb{N}}$  is a martingale whose increments are bounded. The law of large numbers for functions  $f$  belonging to  $\mathcal{L}(1)$  then follows from the well-known fact that  $\mathcal{M}_n/n$  converges a.s. to zero. It is also true for all Lipschitz functions  $f$ . Next, given a continuous function  $f$  on  $S$  and  $m \in \mathbb{N}^*$ , by usual approximations, it is possible to find a Lipschitz function  $\tilde{f}_m$  on  $S$  such that  $\|f - \tilde{f}_m\|_{S, \infty} \leq 1/m$ , where  $\|\cdot\|_{S, \infty}$  is the uniform norm on  $S$ . It follows that on a measurable set  $\Omega_m$  of probability 1,

$$\begin{aligned} \limsup_{N \rightarrow \infty} \frac{1}{N+1} \sum_{n \in \llbracket 0, N \rrbracket} f(U_n^x) &\leq \mu[f] + 2/m \\ \liminf_{N \rightarrow \infty} \frac{1}{N+1} \sum_{n \in \llbracket 0, N \rrbracket} f(U_n^x) &\geq \mu[f] - 2/m \end{aligned}$$

Thus on the set  $\bigcap_{m \in \mathbb{N}^*} \Omega_m$  of full probability, (23) is true. ■

Let us discuss condition (21). Note that since the functions  $f_i$ , for  $i \in \llbracket 1, n \rrbracket$ , are Lipschitz, they are absolutely continuous. Let us write  $f'_i$  for their respective weak derivatives. By letting  $y$  and  $x$  become close in criterion (21), we get that almost everywhere in  $x \in S$ ,

$$\sum_{i \in \llbracket 1, n \rrbracket} p_i \ln(|f'_i(x)|) \leq r \quad (24)$$

Condition (24) is not sufficient to insure that the kernel  $N$  is ergodic. Consider the following example with  $S = [0, 1]$ ,  $n = 2$  and the functions  $f_1$  and  $f_2$  defined by

$$\forall x \in [0, 1], \quad f_i(x) := \begin{cases} \min(2x, 1) & , \text{ if } i = 1 \\ \max(0, -1 + 2x) & , \text{ if } i = 2 \end{cases}$$

In this case (24) is even satisfied with  $r = -\infty$  and the set of invariant probability measures is  $\{a\delta_0 + (1-a)\delta_1 : a \in [0, 1]\}$ , so none of them can be attractive (but the law of a corresponding Markov chain converges exponentially fast to one of the invariant probability measures).

Nevertheless, under some circumstances, the necessary condition (24) is also sufficient. This is the case if for all the functions  $|f'_i|$ , with  $i \in \llbracket 1, n \rrbracket$ , there exist  $a_i, b_i \in \mathbb{R}$  such that almost everywhere (a.e.) in  $x \in S$ ,

$$|f'_i(x)| = (a_i x + b_i)^{-2} \quad (25)$$

(in particular  $-b_i/a_i$  cannot belong to  $S$  otherwise  $f'_i$  would not be integrable over this interval). Indeed in this situation we can write that for any  $x < y \in S$ ,

$$\begin{aligned} \frac{|f_i(y) - f_i(x)|}{|y - x|} &= \frac{1}{|y - x|} \left| \int_x^y f'_i(z) dz \right| \\ &\leq \frac{1}{|y - x|} \int_x^y |f'_i(z)| dz \\ &= \frac{1}{|y - x|} \int_x^y \frac{1}{(a_i z + b_i)^2} dz \\ &= \frac{1}{a_i |y - x|} \left( \frac{1}{a_i x + b_i} - \frac{1}{a_i y + b_i} \right) \\ &= \frac{1}{a_i |y - x|} \frac{a_i(y - x)}{(a_i y + b_i)(a_i x + b_i)} \\ &= \frac{1}{|a_i y + b_i| |a_i x + b_i|} \\ &= \sqrt{|f'_i(y)| |f'_i(x)|} \end{aligned}$$

where the last equality has to be understood a.e. It follows that, at least for a.e.  $x, y \in S$ ,

$$\ln \left( \frac{|f_i(y) - f_i(x)|}{|y - x|} \right) \leq \frac{\ln(|f'_i(y)|) + \ln(|f'_i(x)|)}{2} \quad (26)$$

and consequently

$$\sum_{i \in \llbracket 1, n \rrbracket} p_i \ln \left( \frac{|f_i(y) - f_i(x)|}{|y - x|} \right) \leq \frac{1}{2} \sum_{i \in \llbracket 1, n \rrbracket} p_i \ln(|f'_i(y)|) + \frac{1}{2} \sum_{i \in \llbracket 1, n \rrbracket} p_i \ln(|f'_i(x)|)$$

A formula which enables passing from (24) to (21). It only has to be checked for a.e.  $x, y \in S$ .

It is time now to come back to the flat triangle Markov chain. Consider the setting where  $N = M$ , i.e.  $S = [0, 1/2]$ ,  $n = 6$ ,  $f_i = z_i$  for  $i \in \llbracket 1, 6 \rrbracket$  and  $p$  the uniform distribution on  $\llbracket 1, 6 \rrbracket$ . Now condition (25) is satisfied. Since  $z'_2(2/7-) = -z'_2(2/7+)$  and  $z'_3(1/5-) = -z'_3(1/5+)$ , we see that  $|z'_i|(x)$  can be defined everywhere (a convention that we will adopt from now on). Indeed, we compute that for any  $x \in [0, 1/2]$ ,

$$\begin{aligned} |z'_1|(x) &= \frac{3}{2(1+x)^2}, & |z'_2|(x) &= \frac{6}{(2-x)^2} \\ |z'_3|(x) &= \frac{2}{3(1-x)^2}, & |z'_4|(x) &= \frac{3}{2(2-x)^2} \\ |z'_5|(x) &= \frac{3}{2(2-x)^2}, & |z'_6|(x) &= \frac{2}{3} \end{aligned}$$

Unfortunately (24) is not true and surprisingly it is a computation we have already encountered: comparing with (11), we see that

$$\forall i \in \llbracket 1, 6 \rrbracket, \forall x \in [0, 1/2], \quad |z'_i|(x) = \frac{1}{G^2(i, x)}$$

thus by the observation before Proposition 8, we know that  $\sum_{i \in \llbracket 1, 6 \rrbracket} \ln(|z'_i|(x))$  is positive for  $x$  near  $1/2$ . As in section 3, we get around this difficulty by iterating the kernel  $M$  one more time (this trick was also used by Barnsley and Elton in one example of their paper [1]). So we consider  $N = M^2$ , namely  $S = [0, 1/2]$ ,  $n = 36$ ,  $f_{i,j} = z_i \circ z_j$  for  $(i, j) \in \llbracket 1, 6 \rrbracket^2$  and  $p$  the uniform distribution on  $\llbracket 1, 6 \rrbracket^2$ . The advantage is that we have for any  $i, j \in \llbracket 1, 6 \rrbracket$  and any  $x \in [0, 1/2]$ ,

$$\begin{aligned} |f'_{i,j}|(x) &= |z'_i|(z_j(x)) |z'_j|(x) \\ &= (G(i, z_j(x))G(j, x))^{-2} \end{aligned}$$

Thus

$$\forall x \in [0, 1/2], \quad \sum_{i,j \in \llbracket 1, 6 \rrbracket} \ln(|f'_{i,j}|(x)) = -2F(x)$$

and in particular the left hand side is negative due to Proposition 8 (it is even increasing as a function of  $x \in [0, 1/2]$  according to the observation made at the end of section 3). But (25) is no longer satisfied by the functions  $f_{i,j}$ . To avoid this problem, we come back directly to the bound (26): for  $i, j \in \llbracket 1, 6 \rrbracket$  and  $y > x \in [0, 1/2]$ , we write

$$\begin{aligned} \ln \left( \frac{|f_{i,j}(y) - f_{i,j}(x)|}{|y - x|} \right) &= \ln \left( \frac{|z_i(z_j(y)) - z_i(z_j(x))|}{|z_j(y) - z_j(x)|} \right) + \ln \left( \frac{|z_j(y) - z_j(x)|}{|y - x|} \right) \\ &\leq \frac{\ln(|z'_i(z_j(y))|) + \ln(|z'_i(z_j(x))|)}{2} + \frac{\ln(|z'_j(y)|) + \ln(|z'_j(x)|)}{2} \\ &= \frac{\ln(|f'_{i,j}(y)|) + \ln(|f'_{i,j}(x)|)}{2} \end{aligned}$$



In this situation we can also come back from (25) to (24) and the results of Barnsley and Elton [1] insure that the iterated Markov kernel  $M^2$  is ergodic. To come back from  $M^2$  to  $M$  is not difficult:

**Proposition 14** *The kernel  $M$  is ergodic and the Markov chain  $Z$  satisfies the strong law of large numbers.*

**Proof**

Let  $\mu$  be the attracting and invariant probability for  $M^2$ . Then we have  $(\mu M)M^2 = (\mu M^2)M = \mu M$ , so  $\mu M$  is invariant for  $M^2$  and by uniqueness it follows that  $\mu M = \mu$ . Next for any probability measure  $\nu$  on  $[0, 1/2]$ , the (weak) limit set of  $(\nu M^n)_{n \in \mathbb{N}}$  is included in  $\{\mu, \mu M\} = \{\mu\}$ , so  $\mu$  is also attracting for  $M$  and the uniqueness of  $\mu$  as the invariant probability of  $M$  follows. Finally the strong law of large numbers for  $Z$  can be deduced from that of the two Markov chains  $(Z_{2n})_{n \in \mathbb{N}}$  and  $(Z_{1+2n})_{n \in \mathbb{N}}$ . ■

There was a cruder way to deduce the ergodicity of  $M$ :

**Remark 15** Diaconis and Freedman [5] consider a simpler criterion for ergodicity of a random function Markov kernel (20): for  $i \in \llbracket 1, n \rrbracket$ , let  $K_i := \sup_{x \neq y} |f_i(y) - f_i(x)|/|y - x|$  be the Lipschitz constant of  $f_i$  and assume that there exists a constant  $r < 0$  such that

$$\forall x, y \in S, \quad \sum_{i \in \llbracket 1, n \rrbracket} p_i \ln(K_i) \leq r \tag{27}$$

then the kernel  $N$  is ergodic and Diaconis and Freedman [5] show that the convergence is exponentially fast in the Prokhorov distance (but for us the Wasserstein distance is more convenient because in the end we would like to couple the two Markov chains  $(X_n, Y_n)_{n \in \mathbb{N}}$  and  $(Z_n)_{n \in \mathbb{N}}$ ). Of course condition (27) implies (21). Since for  $i \in \llbracket 1, n \rrbracket$ ,  $K_i$  is the essential supremum of  $|f'_i(x)|$ , (27) corresponds to the exchange of essential supremum and sum in (21). Let us now come back to our flat triangle Markov chain. From the previous considerations, (27) cannot be satisfied with  $N = M$ . It does not work either with  $N = M^2$ , so this is an example where the criterion (21) is fulfilled while (27) is not. But condition (27) is satisfied with  $N = M^3$ , namely  $S = [0, 1/2]$ ,  $n = 216$ ,  $f_{i,j,k} = z_i \circ z_j \circ z_k$  for  $(i, j, k) \in \llbracket 1, 6 \rrbracket^3$  and  $p$  the uniform distribution on  $\llbracket 1, 6 \rrbracket^3$ . For the details of the underlying numerical computations, we refer to section 7. □

To finish we prove two properties of  $\mu$  which will be needed in next section. The first one is

**Lemma 16** *The probability  $\mu$  contains no atom, in particular  $\mu(\{0\}) = 0$ .*

**Proof**

The proof needs a few steps and notation. Let us define

$$\begin{aligned} \mu^* &:= \sup\{\mu(\{x\}) : x \in [0, 1/2]\} \\ S^* &:= \{x \in [0, 1/2] : \mu(\{x\}) = \mu^*\} \end{aligned}$$

and for any  $x \in [0, 1/2]$ ,

$$\begin{aligned} \bar{S}(x) &:= \{(i, y) \in \llbracket 1, 6 \rrbracket \times [0, 1/2] : z_i(y) = x\} \\ S(x) &= \{y \in [0, 1/2] : \exists i \in \llbracket 1, 6 \rrbracket \text{ with } z_i(y) = x\} \end{aligned}$$

The first step is:

- We have  $\mu(\{0\}) = \mu(\{1/2\}) \leq \mu^*/2$ .

By invariance of  $\mu$  we can write that

$$\begin{aligned}\mu(\{0\}) &= \mu(M[\mathbb{I}_{\{0\}}]) \\ &= \frac{1}{6} \sum_{(i,y) \in \bar{S}(0)} \mu(\{y\}) \\ &= \frac{2}{6}\mu(\{0\}) + \frac{4}{6}\mu(\{1/2\})\end{aligned}$$

and this relation implies that  $\mu(\{0\}) = \mu(\{1/2\})$ . Next consider the point  $1/2$ . We get

$$\begin{aligned}\mu(\{1/2\}) &= \frac{1}{6} \sum_{(i,y) \in \bar{S}(1/2)} \mu(\{y\}) \\ &= \frac{2}{6}\mu(\{1/2\}) + \frac{1}{6}\mu(\{1/5\}) + \frac{1}{6}\mu(\{2/7\}) \\ &\leq \frac{2}{6}\mu(\{1/2\}) + \frac{1}{3}\mu^*\end{aligned}$$

so it follows that  $\mu(\{1/2\}) \leq \mu^*/2$ .

The next step is:

- For any  $x \in S^*$ , we have  $S(x) \subset S^* \cup \{0\}$ .

Looking at the graphs of the functions  $z_i$ , for  $i \in \llbracket 1, 6 \rrbracket$  (see Figure 1 in section 7), we get that

$$\forall x \in [0, 1/2], \quad \text{card}(\bar{S}(x)) = \begin{cases} 4 & , \text{ if } x = 1/2 \\ 7 & , \text{ if } x = 1/4 \text{ or } x = 1/3 \\ 6 & , \text{ otherwise} \end{cases}$$

So consider  $x \in S^* \setminus \{1/4, 1/3, 1/2\}$ , writing

$$\begin{aligned}\mu(\{x\}) &= \frac{1}{6} \sum_{(i,y) \in \bar{S}(x)} \mu(\{y\}) \\ &\leq \mu^*\end{aligned}$$

it appears that equality is possible only if  $\mu(\{y\}) = \mu^*$  for all  $y \in S(x)$ , namely  $S(x) \subset S^*$ .

We study now the three particular cases of  $1/4$ ,  $1/3$  and  $1/2$ .

- For  $1/2$ : as seen in the first step,  $1/2 \in S^*$  implies that  $\mu^* = 0$ , so  $S^* = [0, 1/2]$  and the inclusion  $S(1/2) \subset S^*$  is trivial.

- For  $1/4$ : there exist five distinct points  $y'_1, y'_2, y'_3, y'_4, y'_5 \in [0, 1/2]$  such that we have

$$S(1/4) = \{(4, 0), (5, 0), (1, y'_1), (2, y'_2), (2, y'_3), (3, y'_4), (6, y'_5)\}$$

so by invariance of  $\mu$  we get

$$\begin{aligned}\mu(\{1/4\}) &= \frac{1}{6} \left( 2\mu(\{0\}) + \sum_{i \in \llbracket 1, 5 \rrbracket} \mu(\{y'_i\}) \right) \\ &\leq \frac{1}{6}(2\mu(\{0\}) + 5\mu^*)\end{aligned}$$

and since we know that  $\mu(\{0\}) \leq \mu^*/2$ , the equality  $\mu(\{1/4\}) = \mu^*$  is possible only if  $\mu(\{y'_i\}) = \mu^*$  for  $i \in \llbracket 1, 5 \rrbracket$ , so we can conclude that  $S(1/4) \subset S^* \cup \{0\}$ .

- The same argument holds for  $1/3$  (even if  $1/3 \in S(1/3)$ ).

For the last step, let us denote by  $\tilde{z}_2$  the restriction of  $z_2$  to  $[0, 2/7]$ . This mapping is one-to-one from  $[0, 2/7]$  to  $[0, 1/2]$  and we denote its inverse by  $\tilde{z}_2^{-1}$ .

- For  $x \in (0, 1/2]$ , the set  $\{\tilde{z}_2^{-n}(x) : n \in \mathbb{N}\}$  is infinite, so  $S^*$  is infinite.

The first assertion comes from the fact that for any  $x \in (0, 1/2]$ ,  $0 < \tilde{z}_2^{-1}(x) < x$ , so  $(\tilde{z}_2^{-n}(x))_{n \in \mathbb{N}}$  is indeed a decreasing sequence (converging to 0). By the first step,  $S^*$  cannot be reduced to  $\{0\}$ , so there exists  $x \in S^* \setminus \{0\}$ . By the previous step, the sequence  $(\tilde{z}_2^{-n}(x))_{n \in \mathbb{N}}$  is included in  $S^*$ , since none of its elements can be equal to 0. It follows that  $S^*$  is infinite.

Of course the last statement implies that  $\mu^* = 0$ , because  $\mu$  is a probability measure. ■

If all of the functions  $z_i$ , for  $i \in \llbracket 1, 6 \rrbracket$ , were strictly monotone, the fact that  $\mu(\{0\}) = 0$  could have been deduced more directly from the uniqueness of  $\mu$  and Theorem 2.10 from Dubins and Freedman [7]. The second piece of information we need about  $\mu$  is a direct consequence of a result of the latter paper.

**Lemma 17** *The support of  $\mu$  is the whole segment  $[0, 1/2]$ .*

**Proof**

By Theorem 4.9 of Dubins and Freedman [7], the support of  $\mu$  is the whole segment  $[0, 1/2]$  if we can cover it by the images of the functions  $z_i$  which are strict contractions. But this is the case here, since  $z_4$  and  $z_5$  are strict contractions and  $z_4([0, 1/2]) = [1/4, 1/2]$  and  $z_5([0, 1/2]) = [0, 1/4]$ . ■

## 6 More on the asymptotic behaviour

Our main goal here is to prove Theorems 2 and 3. The underlying tool is to couple the Markov chains  $(X_n, Y_n)_{n \in \mathbb{N}}$  and  $(Z_n)_{n \in \mathbb{N}}$  to take advantage of the information we have on the chain  $(Z_n)_{n \in \mathbb{N}}$ .

A natural coupling between the above chains is based on the construction alluded to in Remark 11. Assume that  $(X_0, Y_0)$  and  $Z_0$  are given and let  $(\iota_n)_{n \in \mathbb{N}^*}$  be a sequence of independent random variables uniformly distributed on  $\llbracket 1, 6 \rrbracket$  and independent from the previous initial conditions. We consider  $(Z_n)_{n \in \mathbb{N}}$  constructed as in (18) and similarly we iteratively define  $(X_n, Y_n)_{n \in \mathbb{N}}$  via

$$\forall n \in \mathbb{N}, \quad (X_{n+1}, Y_{n+1}) := (x_{\iota_{n+1}}(X_n), y_{\iota_{n+1}}(Y_n))$$

In these relations, the indices refer to the conventions made in (3) and (6). A first simple property of this coupling is

**Lemma 18** *The random variables  $|X_n - Z_n|$  converge in probability to zero as  $n$  goes to infinity:*

$$\forall \epsilon > 0, \quad \lim_{n \rightarrow \infty} \mathbb{P}[|X_n - Z_n| > \epsilon] = 0$$

**Proof**

First we iterate Lemma 7 to show that with  $K' := K^2 + 8K/3 > 0$ , we have

$$\forall i, j \in \llbracket 1, 6 \rrbracket, \forall (x, y) \in \mathcal{D}, \quad |x_i(x_j(x, y), y_j(x, y)) - z_i(z_j(x))| \leq K'y$$

Indeed, taking into account that all the functions  $z_i$ ,  $i \in \llbracket 1, 6 \rrbracket$  have a Lipschitz constant less than (or equal to)  $8/3$ , we deduce that for any  $i, j \in \llbracket 1, 6 \rrbracket$  and any  $(x, y) \in \mathcal{D}$ ,

$$\begin{aligned} & |x_i(x_j(x, y), y_j(x, y)) - z_i(z_j(x))| \\ & \leq |x_i(x_j(x, y), y_j(x, y)) - z_i(x_j(x, y))| + |z_i(x_j(x, y)) - z_i(z_j(x))| \\ & \leq K|y_j(x, y)| + \frac{8}{3}|x_j(x, y) - z_j(x)| \\ & \leq K^2y + \frac{8K}{3}y \end{aligned}$$

Let  $q \in (0, 1]$  and  $\rho \in (0, 1)$  as in (22) but relative to the kernel  $N = M^2$ . Then for any  $n \in \mathbb{N}$ , we can write

$$\begin{aligned}
& \mathbb{E}[|X_{n+2} - Z_{n+2}|^q | X_n, Y_n, Z_n] \\
&= \mathbb{E}[|x_{\iota_{n+2}}(x_{\iota_{n+1}}(X_n, Y_n), y_{\iota_{n+1}}(X_n, Y_n)) - z_{\iota_{n+2}}(z_{\iota_{n+1}}(Z_n))^q| | X_n, Y_n, Z_n] \\
&\leq \mathbb{E}[|x_{\iota_{n+2}}(x_{\iota_{n+1}}(X_n, Y_n), y_{\iota_{n+1}}(X_n, Y_n)) - z_{\iota_{n+2}}(z_{\iota_{n+1}}(X_n))^q| | X_n, Y_n, Z_n] \\
&\quad + \mathbb{E}[|z_{\iota_{n+2}}(z_{\iota_{n+1}}(X_n)) - z_{\iota_{n+2}}(z_{\iota_{n+1}}(Z_n))^q| | X_n, Y_n, Z_n] \\
&\leq (K')^q Y_n^q + \rho |X_n - Z_n|^q
\end{aligned}$$

For  $n \in \mathbb{N}$ , denote

$$\begin{aligned}
a_n &:= \mathbb{E}[|X_n - Z_n|^q] \\
b_n &:= (K')^q \mathbb{E}[Y_n^q]
\end{aligned}$$

After integration, the above bound leads to

$$\forall n \in \mathbb{N}, \quad a_{n+2} \leq \rho a_n + b_n$$

We deduce that

$$\forall n \in \mathbb{N}, \quad a_{2n} \leq a_0 \rho^n + \sum_{m \in \llbracket 0, n-1 \rrbracket} b_{2m} \rho^{n-1-m} \quad (28)$$

where  $\lim_{n \rightarrow \infty} a_{2n} = 0$  is a consequence of  $\lim_{n \rightarrow \infty} b_n = 0$ . A similar computation shows that this latter condition also implies that  $\lim_{n \rightarrow \infty} a_{2n+1} = 0$ , i.e. at the end we will be insured of

$$\lim_{n \rightarrow \infty} \mathbb{E}[|X_n - Z_n|^q] = 0$$

and thus of the announced convergence in probability.

But we already know that  $(Y_n)_{n \in \mathbb{N}}$  converges a.s. to zero and since this sequence is uniformly bounded, we see by the dominated convergence theorem that  $\lim_{n \rightarrow \infty} b_n = 0$ . ■

Now Theorem 2 follows quite easily:

### Proof of Theorem 2

For  $n \in \mathbb{N}$ , denote by  $A'_n$  (respectively  $A''_n$ ) the angle between  $[(0, 0), (X_n, Y_n)]$  and  $[(X_n, Y_n), (X_n, 0)]$  (resp.  $[(X_n, 0), (X_n, Y_n)]$  and  $[(X_n, Y_n), (1, 0)]$ ), so that  $A_n = A'_n + A''_n$ . Since the length of  $[(X_n, 0), (1, 0)]$  is larger than  $1/2$  and  $Y_n$  converges a.s. to zero for large  $n \in \mathbb{N}$ , it is clear that  $A''_n$  converges a.s. to  $\pi/2$ . Furthermore, we have  $\tan(A'_n) = X_n/Y_n$ , so to see that  $A_n$  converges in probability toward  $\pi$ , we must see that  $Y_n/X_n$  converges in probability toward 0. Let  $\epsilon, \eta > 0$  be given, we have for any  $n \in \mathbb{N}$ ,

$$\begin{aligned}
\mathbb{P}[Y_n/X_n \geq \epsilon] &= \mathbb{P}[Y_n/X_n \geq \epsilon, X_n > 2\eta] + \mathbb{P}[Y_n/X_n \geq \epsilon, X_n \leq 2\eta] \\
&\leq \mathbb{P}[Y_n \geq 2\epsilon\eta] + \mathbb{P}[X_n \leq 2\eta] \\
&\leq \mathbb{P}[Y_n \geq 2\epsilon\eta] + \mathbb{P}[|X_n - Z_n| \geq \eta] + \mathbb{P}[Z_n \leq \eta]
\end{aligned} \quad (29)$$

By letting  $n$  going to infinity, taking into account that the stationary distribution  $\mu$  of  $Z$  is continuous, we get

$$\begin{aligned}
\limsup_{n \rightarrow \infty} \mathbb{P}[Y_n/X_n \geq \epsilon] &\leq \lim_{n \rightarrow \infty} \mathbb{P}[Z_n \leq \eta] \\
&= \mu([0, \eta])
\end{aligned}$$

because as  $n$  goes to infinity, the law of  $Z_n$  converges weakly to  $\mu$  and this probability gives weight 0 to the boundary  $\{\eta\}$  of  $(-\infty, \eta]$ . Using again Lemma 16 and letting  $\eta$  go to zero, we obtain that  $\lim_{n \rightarrow \infty} \mathbb{P}[Y_n/X_n \geq \epsilon] = 0$  and consequently the announced convergence in probability.  $\blacksquare$

**Remark 19** We don't know if  $(A_n)_{n \in \mathbb{N}}$  converges to  $\pi$  a.s. One way to deduce this result, via the Borel-Cantelli lemma, would be to show that for any given  $\epsilon > 0$ ,

$$\sum_{n \in \mathbb{N}} \mathbb{P}[Y_n/X_n \geq \epsilon] < +\infty \quad (30)$$

In view of the above arguments, one of the main problems is that we have no bound on the way  $\mu([0, \eta])$  goes to zero as  $\eta$  goes to zero. We would like to find  $\alpha > 0$  such that  $\limsup_{\eta \rightarrow 0_+} \mu([0, \eta])/\eta^\alpha < +\infty$ , but we were not able to prove such an estimate. If we knew that  $\mu$  is absolutely continuous, Figure 7 in section 7 would suggest that this property holds with  $\alpha = 1$  (and  $\lim_{\eta \rightarrow 0_+} \mu([0, \eta])/\eta \leq 1$ ).  $\square$

In order to prove Theorem 3, we need two technical results. In all that follows, let fix some  $a \in [0, 1/2]$  and  $\epsilon > 0$  and define  $\mathcal{O} := [a - \epsilon, a + \epsilon] \cap [0, 1/2]$ .

**Lemma 20** *There exist  $\eta > 0$  and  $N \in \mathbb{N}^*$  such that*

$$\inf_{z \in [0, 1/2]} \mathbb{P}_z[Z_N \in \mathcal{O}] \geq \eta$$

(the index  $z$  means that  $Z_0 = z$ ).

**Proof**

This is a consequence of Lemma 13 applied to  $M^2$ : there exists  $\rho \in (0, 1)$  such that for any  $z \in [0, 1/2]$  and  $n \in \mathbb{N}$ ,  $D(M^n(z, \cdot), \mu) \leq \rho^{\lfloor n/2 \rfloor}/2$ . Let  $\varphi$  be the function vanishing outside  $(a - \epsilon, a + \epsilon)$ , affine on  $[a - \epsilon, a]$  and  $[a, a + \epsilon]$  such that  $\varphi(a) = \epsilon$ . By definition of  $D$ , we have

$$\forall z \in [0, 1/2], \forall n \in \mathbb{N}, \quad |M^n(z, \varphi) - \mu[\varphi]| \leq \frac{\rho^{\lfloor n/2 \rfloor}}{2}$$

Since the support of  $\mu$  is  $[0, 1/2]$ , we have  $\eta := \mu[\varphi] > 0$ . So if we choose  $N \in \mathbb{N}$  such that  $\rho^{\lfloor N/2 \rfloor} < \eta$ , we get that for any  $z \in [0, 1/2]$ ,  $\mathbb{P}_z[X_N \in \mathcal{O}] \geq M^N(z, \varphi) > \eta/2$ .  $\blacksquare$

For the second technical result, we need further notation: for  $(x, y) \in \mathcal{D}$  and  $(i_1, i_2, \dots, i_N) \in \llbracket 1, 6 \rrbracket^N$ , we denote  $x_{i_1, i_2, \dots, i_N}(x, y)$ ,  $y_{i_1, i_2, \dots, i_N}(x, y)$  and  $z_{i_1, i_2, \dots, i_N}(x)$  the values of  $X_n$ ,  $Y_n$  and  $Z_n$  when  $(X_0, Y_0, Z_0) = (x, y, z)$  and  $(\iota_1, \iota_2, \dots, \iota_N) = (i_1, i_2, \dots, i_N)$ .

**Lemma 21** *There exists a constant  $K_N$  such that*

$$\forall (i_1, i_2, \dots, i_N) \in \llbracket 1, 6 \rrbracket^N, \forall (x, y) \in \mathcal{D}, \quad \begin{cases} |x_{i_1, i_2, \dots, i_N}(x, y) - z_{i_1, i_2, \dots, i_N}(x)| \leq K_N y \\ |y_{i_1, i_2, \dots, i_N}(x, y)| \leq K_N y \end{cases}$$

**Proof**

For  $N = 1$  this is just Lemma 7. The general case is proven by an easy iteration, similar to the one already used in the proof of Lemma 18, starting with

$$\begin{aligned} & |x_{i_1, i_2, \dots, i_N}(x, y) - z_{i_1, i_2, \dots, i_N}(x)| \\ & \leq |x_{i_N}(x_{i_1, i_2, \dots, i_{N-1}}(x, y), y_{i_1, i_2, \dots, i_{N-1}}(x, y)) - z_{i_N}(x_{i_1, i_2, \dots, i_{N-1}}(x, y))| \\ & \quad + |z_{i_N}(x_{i_1, i_2, \dots, i_{N-1}}(x, y)) - z_{i_N}(z_{i_1, i_2, \dots, i_{N-1}}(x))| \end{aligned}$$

■

We can now come to the

**Proof of Theorem 3**

Let  $\mathcal{O}' := [a - 2\epsilon, a + 2\epsilon] \cap [0, 1/2]$ . We want to show an analogous result to Lemma 20 but for the chain  $(X_n, Y_n)_{n \in \mathbb{N}}$ , namely to find  $\eta' > 0$  and  $N' \in \mathbb{N}^*$  such that

$$\inf_{(x,y) \in \mathcal{D}} \mathbb{P}_{(x,y)}[X_{N'} \in \mathcal{O}'] \geq \eta' \tag{31}$$

(let us recall that under  $\mathbb{P}_{(x,y)}$ ,  $(X_0, Y_0) = (x, y)$ ). To do so, we first consider  $\eta$  and  $N$  as in Lemma 20 and consider  $\delta > 0$  sufficiently small such that  $K_N \delta^{1/2^{N-1}} < \epsilon$ . Then according to Lemmas 20 and 21, we have

$$\inf_{(x,y) \in \mathcal{D} : y < \delta} \mathbb{P}_{(x,y)}[X_N \in \mathcal{O}'] \geq \eta$$

To extend this estimate to the whole domain  $\mathcal{D}$ , we come back to (1) and (5) which enables us to find  $N'' \in \mathbb{N}$  such that

$$\eta'' := \inf_{(x,y) \in \mathcal{D}} \mathbb{P}_{(x,y)}[Y_{N''} < \delta] > 0$$

Now the Markov property implies (31) with  $\eta = \eta' \eta''$  and  $N' = N + N''$ .

Since this bound is uniform over  $(x, y) \in \mathcal{D}$ , the sequence  $(\mathbb{1}_{\mathcal{O}'}(X_{nN'}))_{n \in \mathbb{N}}$  is stochastically bounded below by an independent family of Bernoulli variables of parameter  $\eta'$  and we deduce that a.s.

$$\limsup_{n \rightarrow \infty} \mathbb{1}_{\mathcal{O}'}(X_n) = 1$$

The announced result follows because  $a \in [0, 1/2]$  and  $\epsilon > 0$  are arbitrary.

■

The details of the above proof are necessary because in general one cannot deduce from the convergence in probability of  $|X_n - Z_n|$  to zero as  $n$  goes to infinity the a.s. equality of the limit sets of  $(X_n)_{n \in \mathbb{N}}$  and of  $(Z_n)_{n \in \mathbb{N}}$ . This property rather requires the a.s. convergence of  $|X_n - Z_n|$  to zero and this leads to the following observations:

**Remark 22** Coming back to Remark 19, to prove (30) via (29), we are also missing an estimate of the kind

$$\exists K, p, \chi > 0 : \forall n \in \mathbb{N}, \quad \mathbb{E}[Y_n^p] \leq K \exp(-\chi n) \tag{32}$$

Blackwell [2] succeeded in obtaining such a bound (with  $p = 1/2$ ) by exhibiting an appropriate supermartingale with the help of the computer, see also the survey by Butler and Graham [3]. His result can be seen to imply Theorem 1, with  $\chi = 0.04$ .

Furthermore it allows for a more direct proof of Theorem 3. Indeed, if (32) is satisfied for some  $p > 0$ , then for any  $q > 0$ ,

$$\sum_{n \in \mathbb{N}} \mathbb{E}[Y_n^q] < +\infty$$

(this is immediate for  $q = p$  and use the Hölder inequality for  $0 < q < p$  and the elementary bound  $y^q \leq (\sqrt{3}/2)^{q-p} y^p$  for  $y \in [0, \sqrt{3}/2]$  and  $q > p$ ). The arguments of the proof of Lemma 18 (especially (28) and a similar relation for odd integers) then show that

$$\sum_{n \in \mathbb{N}} \mathbb{E}[|X_n - Z_n|^q] < +\infty$$

and consequently that  $|X_n - Z_n|$  converges a.s. to zero. This is sufficient to deduce that almost surely the limit set of  $(X_n)_{n \in \mathbb{N}}$  coincides with that of  $(Z_n)_{n \in \mathbb{N}}$ , thus the law of large numbers for  $Z$  and Lemma 17 imply Theorem 3.

In the same spirit, one can go further toward justifying the assertion made in the introduction that asymptotically  $(X_n)_{n \in \mathbb{N}}$  is almost Markovian. Let us introduce the supremum distance  $S$  on  $[0, 1/2]^{\mathbb{N}}$ , seen as the set of trajectories from  $\mathbb{N}$  to  $[0, 1/2]$ :

$$\forall x := (x_n)_{n \in \mathbb{N}}, z := (z_n)_{n \in \mathbb{N}} \in [0, 1/2]^{\mathbb{N}}, \quad S(x, z) := \sup_{n \in \mathbb{N}} |x_n - z_n|$$

For  $m \in \mathbb{N}$ , let  $X_{\llbracket m, \infty \llbracket} = (X_{m+n})_{n \in \mathbb{N}} \in [0, 1/2]^{\mathbb{N}}$  and consider

$$s_m := \inf \mathbb{E}[S(X_{\llbracket m, \infty \llbracket}, Z)]$$

where the infimum is taken over all couplings of  $X_{\llbracket m, \infty \llbracket}$  with a Markov chain  $Z$  whose transition kernel is  $M$ . Then we have  $\lim_{m \rightarrow \infty} s_m = 0$ . To be convinced of this convergence, consider for fixed  $m \in \mathbb{N}$ ,  $(\tilde{X}_n, \tilde{Y}_n)_{n \in \mathbb{N}}$  and  $(\tilde{Z}_n)_{n \in \mathbb{N}}$  two chains coupled as in the beginning of this section and starting from the initial conditions  $(\tilde{X}_0, \tilde{Y}_0) = (X_m, Y_m)$  and  $\tilde{Z}_0 = X_m$ . Then (32) and (28) imply that the quantity  $\sum_{n \in \mathbb{N}} \mathbb{E}[|\tilde{X}_n - \tilde{Z}_n|]$  converges exponentially fast to zero as  $m$  goes to infinity.  $\square$

## A Numerical computations

We present here the technical facts needed to conclude the proof of Proposition 8. We used the free numerical computational package Scilab 4.1.2. Next we investigate the Lipschitz constants alluded to in Remark 15. Finally we illustrate the results obtained in this paper by giving a numerical approximation of the invariant measure  $\mu$  of the chain  $Z$  and of rate  $L$  defined in (19).

But as a preliminary, let us give in Figure 1 the graphs of the six functions  $z_i$ , for  $i \in \llbracket 1, 6 \rrbracket$ , since they are at the heart of this paper.

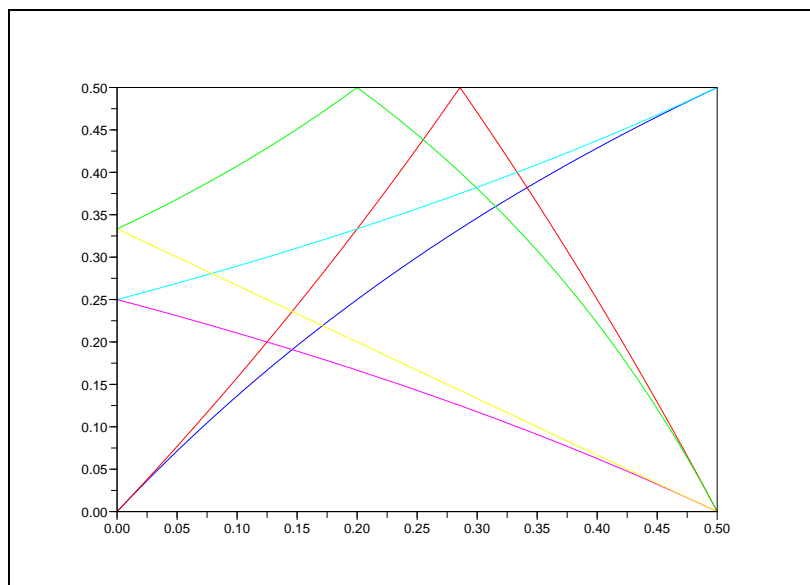


Figure 1: Graphs of the  $z_i$ , for  $i \in \llbracket 1, 6 \rrbracket$

## A.1 Computations relative to Proposition 8

The goal is to show that the function  $F$  defined in (13) does not vanish in  $[0, 1/2]$ . Since we want to work formally as long as we can, it is better to consider the piecewise rational fraction  $R$  given in (14). Here are the codes we wrote and the results given by the computer.

- On the interval  $(2/7, 1/2)$ .

First we compute the matrix  $A := (\sqrt{6}G(i, z_j(x))\sqrt{6}G(j, x))_{i,j \in \llbracket 1,6 \rrbracket}$ , where  $x$  is a “free variable”. We multiplied the function  $G$  by  $\sqrt{6}$  to avoid square roots in the computations.

```
x=poly(0,'x');
z1=3/2*x/(1+x);
z2=(2-4*x)/(2-x);
z3=(2-4*x)/(3-3*x);
z4=(1+x)/(4-2*x);z5=(1-2*x)/(4-2*x);z6=(1-2*x)/3;
z=[z1 z2 z3 z4 z5 z6];
g1=2*(1+x);g2=(2-x);g3=3*(1-x);
g4=2*(2-x);g5=g4;g6=3;
g=[g1;g2;g3;g4;g5;g6];
a=horner(g,z);
A=a*diag(g)
```

Running this code, we get the following polynomial matrix:

$$A := \begin{pmatrix} 4 + 10x & 8 - 10x & 10 - 14x & 10 - 2x & 10 - 8x & 8 - 4x \\ 4 + x & 2 + 2x & 4 - 2x & 7 - 5x & 7 - 2x & 5 + 2x \\ 6 - 3x & 9x & 3 + 3x & 9 - 9x & 9 & 6 + 6x \\ 8 + 2x & 4 + 4x & 8 - 4x & 14 - 10x & 14 - 4x & 10 + 4x \\ 8 + 2x & 4 + 4x & 8 - 4x & 14 - 10x & 14 - 4x & 10 + 4x \\ 6 + 6x & 6 - 3x & 9 - 9x & 12 - 6x & 12 - 6x & 9 \end{pmatrix}$$

By construction, we have

$$\begin{aligned} R(x) &= \frac{1}{6^{36}} \prod_{i,j \in \llbracket 1,6 \rrbracket} A_{i,j}(x) \\ &= \frac{2^{29}3^{17}}{6^{36}} \prod_{i,j \in \llbracket 1,6 \rrbracket} B_{i,j}(x) \end{aligned}$$

where the matrix  $B$  is defined by

$$B := \begin{pmatrix} 2 + 5x & 4 - 5x & 5 - 7x & 5 - x & 5 - 4x & 2 - x \\ 4 + x & 1 + x & 2 - x & 7 - 5x & 7 - 2x & 5 + 2x \\ 2 - x & x & 1 + x & 1 - x & 1 & 1 + x \\ 4 + x & 1 + x & 2 - x & 7 - 5x & 7 - 2x & 5 + 2x \\ 4 + x & 1 + x & 2 - x & 7 - 5x & 7 - 2x & 5 + 2x \\ 1 + x & 2 - x & 1 - x & 2 - x & 2 - x & 1 \end{pmatrix}$$

thus we obtain that  $R(x) - 1 = P_1(x)$  on  $[2/7, 1/2]$ , with

$$\begin{aligned} P_1(x) &:= 2^{-7}3^{-19}(2 + 5x)(4 - 5x)(5 - 7x)(5 - x)(5 - 4x)(2 - x)^8(4 + x)^3(1 + x)^6 \\ &\quad (7 - 5x)^3(7 - 2x)^3(5 + 2x)^3x(1 - x)^2 - 1 \end{aligned}$$

Using the command `roots` of Scilab 4.1.2 which computes numerically the roots of a given polynomial function, we obtained the roots of  $P_1(x)$  depicted as crosses in Figure 2.



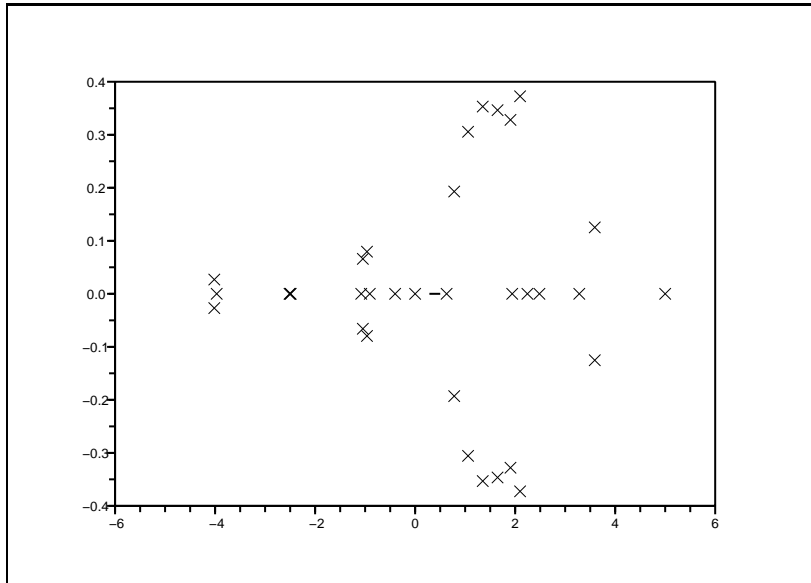


Figure 2: Roots of  $P_1(x)$

The segment  $[2/7, 1/2]$  is drawn as the thick horizontal segment in the middle of the picture and it appears (by zooming) that none of the roots are on it. Indeed looking at the roots found by the computer, the one on the left (respectively the right) of the segment is 0.0006183 (resp. 0.6297289). The fact that  $R > 1$  on  $[2/7, 1/2]$  comes from the computation of  $R(1/2) \approx 12.989284$ . We also estimate that  $R(2/7) \approx 99.311045$ .

- On the interval  $(1/5, 2/7)$ .

The first code above has only to be slightly modified: the definition of `z2` (line 4) is now

```
z2=(3*x)/(2-x);
```

The corresponding matrix  $A$  is also polynomial and the computer gives us

$$A = \begin{pmatrix} 4 + 10x & 4 + 4x & 10 - 14x & 10 - 2x & 10 - 8x & 8 - 4x \\ 4 + x & 4 - 5x & 4 - 2x & 7 - 5x & 7 - 2x & 5 + 2x \\ 6 - 3x & 6 - 12x & 3 + 3x & 9 - 9x & 9 & 6 + 6x \\ 8 + 2x & 8 - 10x & 8 - 4x & 14 - 10x & 14 - 4x & 10 + 4x \\ 8 + 2x & 8 - 10x & 8 - 4x & 14 - 10x & 14 - 4x & 10 + 4x \\ 6 + 6x & 6 - 3x & 9 - 9x & 12 - 6x & 12 - 6x & 9 \end{pmatrix}$$

Then we compute the roots of the polynomial function  $P_2(x)$  representing  $R(x) - 1$  on  $[1/5, 2/7]$ . As can be seen in Figure 3, none of them belong to this segment (drawn as thick line, the closest root is 0.4569663).

Thus  $R$  is strictly positive on  $[1/5, 2/7]$ , since we already knew that  $R(2/7) > 0$ . We estimate that  $R(1/5) \approx 418.66239$ .

- On the interval  $(0, 1/5)$ .

The additional modification is the definition of `z3` (line 5),

```
z3=(1+x)/(3-3*x);
```

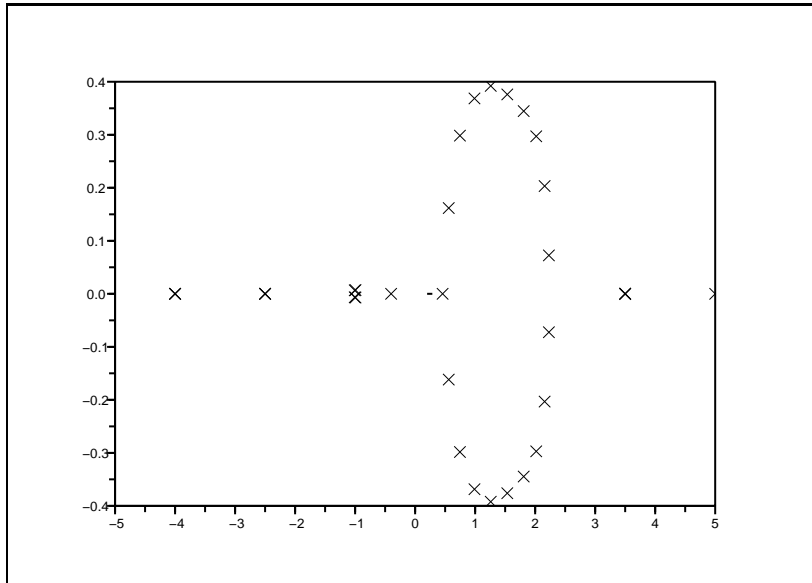


Figure 3: Roots of  $P_2(x)$

Again we obtain a polynomial matrix  $A$ ,

$$A = \begin{pmatrix} 4 + 10x & 4 + 4x & 8 - 4x & 10 - 2x & 10 - 8x & 8 - 4x \\ 4 + x & 4 - 5x & 5 - 7x & 7 - 5x & 7 - 2x & 5 + 2x \\ 6 - 3x & 6 - 12x & 6 - 12x & 9 - 9x & 9 & 6 + 6x \\ 8 + 2x & 8 - 10x & 10 - 14x & 14 - 10x & 14 - 4x & 10 + 4x \\ 8 + 2x & 8 - 10x & 10 - 14x & 14 - 10x & 14 - 4x & 10 + 4x \\ 6 + 6x & 6 - 3x & 9 - 9x & 12 - 6x & 12 - 6x & 9 \end{pmatrix}$$

and Figure 4 gives a picture of the roots of  $P_3(x)$  representing  $R(x) - 1$  on  $[0, 1/5]$ . None of them belong to this segment (the closest one is 0.3995404).

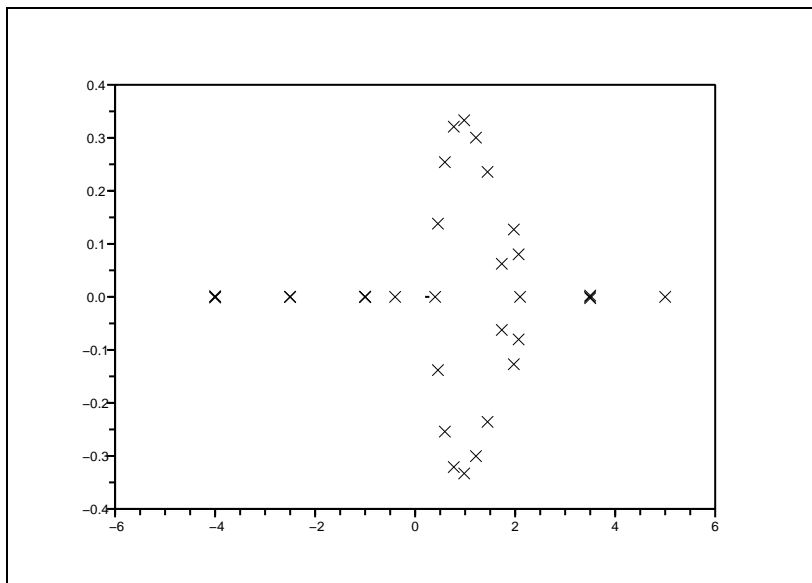


Figure 4: Roots of  $P_3(x)$

Thus  $R$  is also strictly positive on  $[0, 1/5]$ , since we have already seen that  $R(1/5) > 0$ . We estimate that  $R(0) \approx 13496.561$ .

In conclusion, the function  $F$  defined in (13) is positive on  $[0, 1/2]$ , it is illustrated in Figure 5.

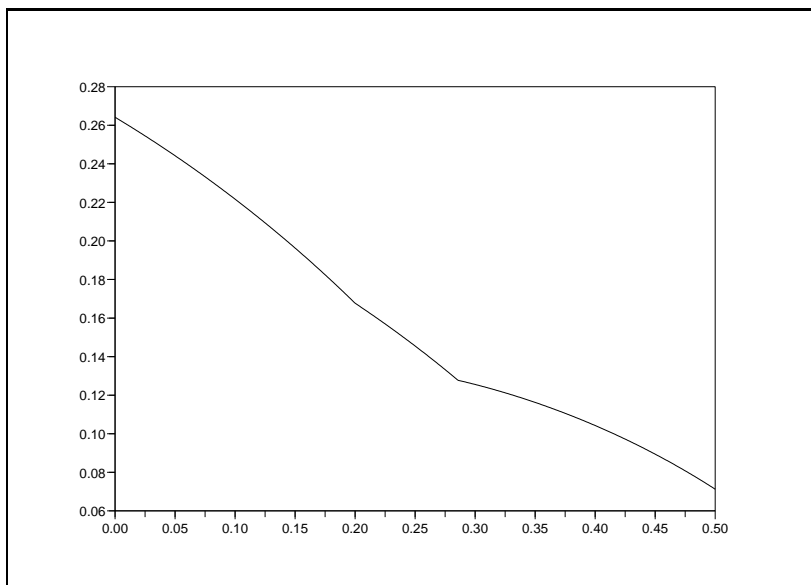


Figure 5: Graph of function  $F$

There is a more analytical approach to justify the positivity of  $F$ . Indeed, the above polynomial expressions for the three matrices  $A$  (one on each of the segments  $[0, 1/5]$ ,  $[1/5, 2/7]$  and  $[2/7, 1/2]$ ) gives a simple uniform bound  $C$  on  $F'$  on  $\in (0, 1/2) \setminus \{1/5, 2/7\}$  via the formula

$$\begin{aligned} \forall x \in (0, 1/2) \setminus \{1/5, 2/7\}, \quad |F'(x)| &= \frac{1}{36} \left| \sum_{i,j \in \llbracket 1,6 \rrbracket} \frac{A'_{i,j}(x)}{A_{i,j}(x)} \right| \\ &\leq \max_{i,j \in \llbracket 1,6 \rrbracket} \left| \frac{A'_{i,j}(x)}{A_{i,j}(x)} \right| \end{aligned}$$

Working out the details, we get that we can take  $C = 14/3$  (obtained for  $i = 3$ ,  $j = 2$  and  $x = 2/7$  for the matrix  $A$  valid on the interval  $[1/5, 2/7]$ ). Thus if there exists  $N \in \mathbb{N}^*$  such that

$$\min_{i \in \llbracket 0, N \rrbracket} F(i/N) - 14/(6N) > 0$$

we can conclude to the positivity of  $F$  on  $[0, 1/2]$ . We tried with  $N = \lceil 14/(3F(1/2)) \rceil = 66$  and it works (except that we have not taken into account the precision of the computer).

The fact that  $F$  and  $R$  are decreasing on  $[0, 1/2]$  can also be checked numerically. Indeed, using the command `derivat` of Scilab 4.1.2, we can compute first the derivatives of the polynomial functions  $P_1$ ,  $P_2$  and  $P_3$  and next their roots. It appears that they do not belong respectively to the segments  $[2/7, 1/2]$ ,  $[1/5, 2/7]$  and  $[0, 1/5]$ . Since we have already seen that  $F(0) > F(1/5) > F(2/7) > F(1/2)$ , it follows that  $F$  is decreasing on  $[0, 1/2]$  and thus bounded below by  $F(1/2)$ .

As suggested to us by André Galligo, there is also a totally algebraic approach to this problem via the use of Sturm's sequences. Since we are dealing with polynomial functions with rational coefficients, this method can be made rigorous, if we are allowed to work on the computer with numbers with a large number of digits (here of order  $42 = \lceil \log_{10}(36!) \rceil$ ), since we have to consider the values of all the derivatives of the polynomial function of interest at the boundary of the interval

where we are looking for roots), in order to deal only with true “integers”. So this approach would require working with mathematical software such as Maple.

Finally let us also draw the graph of the function

$$\tilde{F} : [0, 1/2] \ni x \mapsto \frac{1}{6} \sum_{i \in \llbracket 1, 6 \rrbracket} \ln(G(i, x))$$

to show that it was necessary to iterate the kernel  $M$  to get a lower bound as the one in Proposition 8 (or to be able to apply the result of Barnsley and Elton [1]).

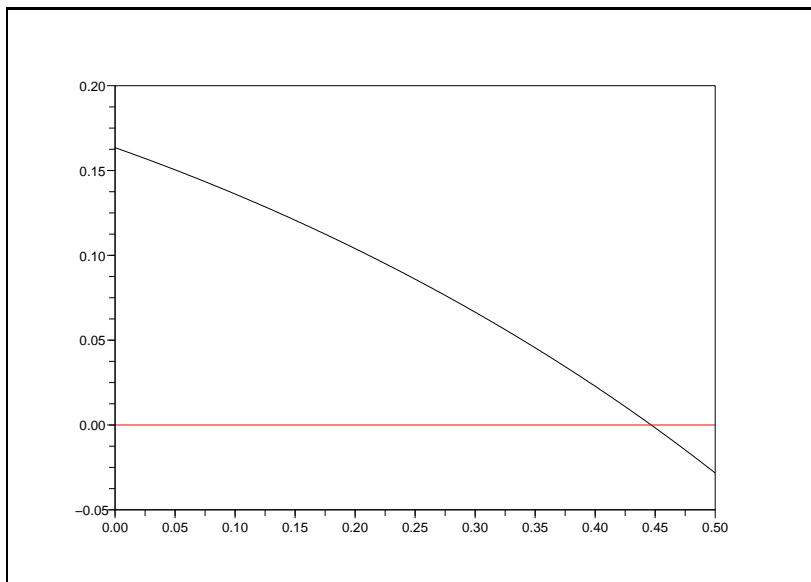


Figure 6: Graph of function  $\tilde{F}$

Indeed,  $\tilde{F}$  is negative in a neighborhood of  $1/2$ , which means that the isoperimetric value of the triangles near this neighborhood have a tendency to decrease. But fortunately, the abscissa of the characteristic point of new triangle obtained by the barycentric subdivision has a chance of 4 over 6 (see Figure 1) to be close to zero, a zone where the isoperimetric functional has a strong tendency to increase.

## A.2 On the Lipschitz constants of Remark 15

We implement on the computer the verification of the criterion (27) from Diaconis and Freedman [5] in our particular situation. We adopt an analytical approach, despite the fact we are essentially dealing with polynomial functions. Let us denote (recall the notation of (11))

$$\forall i \in \llbracket 1, 6 \rrbracket, \forall x \in [0, 1/2], \quad D(i, x) := |z'_i|(x) = \frac{1}{G^2(i, x)}$$

and for any  $n \in \mathbb{N}^*$  and  $(i, j) \in \llbracket 1, 6 \rrbracket^2$ ,

$$K_{i,j}(n) := \sup_{x \in S_n} D(i, z_j(x)) D(j, x)$$

where  $S_n := \llbracket 0, n \rrbracket / (2n)$  is a mesh of  $[0, 1/2]$ . Then for any  $(i, j) \in \llbracket 1, 6 \rrbracket^2$ , the Lipschitz constant of  $z_i \circ z_j$  is given by

$$\begin{aligned} K_{i,j} &:= \sup_{x \in [0, 1/2]} D(i, z_j(x)) D(j, x) \\ &= \sup_{n \in \mathbb{N}^*} K_{i,j}(n) \end{aligned}$$

Thus to show that criterion (27) is not satisfied by  $M^2$ , it is sufficient to check that for some  $n \in \mathbb{N}^*$ ,  $\mathcal{K}_2(n) := \prod_{(i,j) \in \llbracket 1,6 \rrbracket^2} K_{i,j}(n) > 1$ .

Similarly for  $M^3$ , we define for any  $n \in \mathbb{N}^*$  and any  $(i, j, k) \in \llbracket 1,6 \rrbracket^3$ ,

$$K_{i,j,k}(n) := \sup_{x \in S_n} D(i, z_j \circ z_k(x)) D(j, z_k(x)) D(k, x)$$

so that for any  $(i, j, k) \in \llbracket 1,6 \rrbracket^3$ , the Lipschitz constant of  $z_i \circ z_j \circ z_k$  is given by  $K_{i,j,k} = \sup_{n \in \mathbb{N}} K_{i,j,k}(n)$ . We compute that

$$\begin{aligned} \max_{i \in \llbracket 1,6 \rrbracket, x \in [0,1/2]} D(i, x) &= \frac{8}{3} \\ \max_{i \in \llbracket 1,6 \rrbracket, x \in [0,1/2]} \left| \frac{dD(i, x)}{dx} \right| &= \frac{32}{3} \end{aligned}$$

so we easily deduce that

$$\max_{(i,j,k) \in \llbracket 1,6 \rrbracket^3, x \in [0,1/2]} \left| \frac{d}{dx} D(i, z_j \circ z_k(x)) D(j, z_k(x)) D(k, x) \right| \leq \frac{195552}{243} \leq 805$$

It follows that

$$\forall n \in \mathbb{N}^*, \forall (i, j, k) \in \llbracket 1,6 \rrbracket^3, \quad K_{i,j,k} \leq K_{i,j,k}(n) + \frac{202}{n}$$

Thus to see that criterion (27) is satisfied by  $M^3$ , it is sufficient to check that for some  $n \in \mathbb{N}^*$ ,

$$\mathcal{K}_3(n) := \prod_{(i,j,k) \in \llbracket 1,6 \rrbracket^3} \left( K_{i,j,k}(n) + \frac{202}{n} \right) < 1$$

The following program (where the index set  $\llbracket 1,6 \rrbracket$  has been replaced by the more convenient set  $\llbracket 0,5 \rrbracket$ ) gives that  $\mathcal{K}_2(1) = \mathbf{k}2 \approx 92.067225$  and  $\mathcal{K}_3(10000) = \mathbf{k}3 \approx 0.0116774$ , values which justify the assertions made in Remark 15.

```
function z=Z(x,i)
select i
case 0 then z=3/2*x/(1+x);
case 1 then z=3*bool2s((x<2/7))*x/(2-x)+bool2s((x>=2/7))*(2-4*x)/(2-x);
case 2 then z=bool2s((x<1/5)).*(1+x)./(3-3*x)+bool2s((x>=1/5)).*(2-4*x)./(3-3*x);
case 3 then z=(1+x)/(4-2*x);
case 4 then z=(1-2*x)/(4-2*x);
case 5 then z=(1-2*x)/3;
end; endfunction
```

```
function d=D(x,i)
select i
case 0 then d=3/2./(1+x).^2;
case 1 then d=6./(2-x).^2;
case 2 then d=2/3./(1-x).^2;
case 3 then d=3/2./(2-x).^2;
case 4 then d=3/2./(2-x).^2;
case 5 then d=2/3;
end; endfunction
```

```

function d=DD(x,i)
j=floor(i/6); k=i-6*j;
d=D(Z(x,k),j)*D(x,j);
endfunction

function d=DDD(x,i)
j=floor(i/36); k=floor((i-36*j)/6); l=i-36*j-6*k ;
d=D(Z(Z(x,l),k),j)*D(Z(x,l),k)*D(x,l)+202/10000;
endfunction

r2=[0 1/2]; I2=0:35; K2=feval(r2,I2,DDD);
k2=prod(max(K2,'r'))

r3=0:1/(2*10000):.5; I3=0:215; K3=feval(r3,I3,DDD);
k3=prod(max(K3,'r'))

```

### A.3 Approximation of the invariant measure $\mu$

Proposition 14 leads to an approximation of the invariant measure  $\mu$  through the strong law of large numbers. In practice, we run the following code, which simulates the chain  $(Z_n)_{n \in [1, N]}$  with  $N = 100000$  starting from an initial variable  $Z_1$  chosen uniformly over  $[0, 1/2]$ .

```

n=100000;
z(1)=.5*rand(); s(1)=0;
for i=2:n
j=floor(6*rand());
z(i)=Z(z(i-1),j);
s(i)=s(i-1)-log(D(z(i-1),j))/2;
end
L=s(n)/n

```

The program takes into account the functions  $Z$  and  $D$  defined in the code of the previous subsection. Figure 7 shows the approximation we got of  $\mu$  through a histogram using 100 bars.

Finally, the code provides an approximation of the rate  $L$  defined in (19). Running the program several times, we always got values between 0.07 and 0.08, suggesting that Theorem 1 should be satisfied with  $\chi = 0.07$ .

### Acknowledgments:

We are indebted to David Blackwell, Curtis T. McMullen and Bob Hough for kindly providing us their manuscripts [2, 6, 8] in preparation on the subject. We acknowledge the generous support of the ANR's Chaire d'Excellence program of the CNRS. We are very grateful to Oliver Riordan and to the referees which helped us to improve the paper by simplifying its arguments. In particular the suggestion to use the simpler functional  $J$  instead of  $I$  in Section 2 is due to one of them.

## References

- [1] Michael F. Barnsley and John H. Elton. A new class of Markov processes for image encoding. *Adv. in Appl. Probab.*, 20(1):14–32, 1988.
- [2] David Blackwell. Barycentric subdivision. Private communication, 2008.

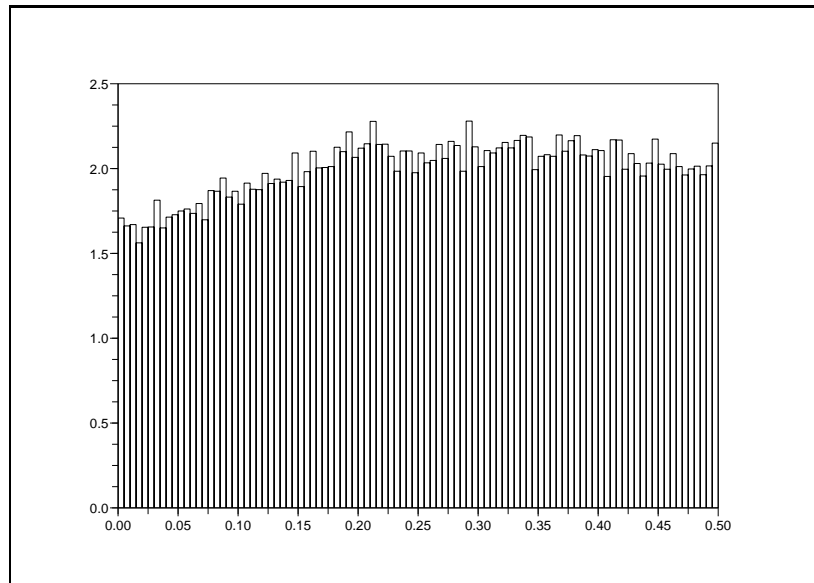


Figure 7: An approximation of  $\mu$

- [3] Steve Butler and Ron Graham. Iterated triangle partitions. Preprint available on [http://www.math.ucla.edu/~butler/PDF/iterated\\_triangles.pdf](http://www.math.ucla.edu/~butler/PDF/iterated_triangles.pdf), 2010.
- [4] Claude Dellacherie and Paul-André Meyer. *Probabilités et potentiel. Chapitres V à VIII*, volume 1385 of *Actualités Scientifiques et Industrielles [Current Scientific and Industrial Topics]*. Hermann, Paris, revised edition, 1980. Théorie des martingales. [Martingale theory].
- [5] Persi Diaconis and David Freedman. Iterated random functions. *SIAM Rev.*, 41(1):45–76 (electronic), 1999.
- [6] Persi Diaconis and Curtis T. McMullen. Barycentric subdivision. Article in preparation, 2008.
- [7] Lester E. Dubins and David A. Freedman. Invariant probabilities for certain Markov processes. *Ann. Math. Statist.*, 37:837–848, 1966.
- [8] Bob Hough. Tessellation of a triangle by repeated barycentric subdivision. *Electron. Commun. Probab.*, 14:270–277, 2009.
- [9] Robert Osserman. The isoperimetric inequality. *Bull. Amer. Math. Soc.*, 84(6):1182–1238, 1978.
- [10] William F. Stout. *Almost sure convergence*. Academic Press [A subsidiary of Harcourt Brace Jovanovich, Publishers], New York-London, 1974. Probability and Mathematical Statistics, Vol. 24.

†diaconis@math.stanford.edu  
 Department of Statistics  
 Sequoia Hall  
 390 Serra Mall  
 Stanford University  
 Stanford, CA 94305-4065

‡miclo@math.univ-toulouse.fr  
 Institut de Mathématiques de Toulouse  
 Université Paul Sabatier  
 118, route de Narbonne  
 31062 Toulouse Cedex 9, France