



HAL
open science

Foot, hand, face and eye representation in the human striatum.

Emmanuel Gerardin, Stéphane Lehéricy, Jean-Baptiste Pochon, Sophie Tézenas Du Montcel, Jean-François Mangin, Fabrice Poupon, Yves Agid, Denis Le Bihan, Claude Marsault

► To cite this version:

Emmanuel Gerardin, Stéphane Lehéricy, Jean-Baptiste Pochon, Sophie Tézenas Du Montcel, Jean-François Mangin, et al.. Foot, hand, face and eye representation in the human striatum.. Cerebral Cortex, 2003, 13 (2), pp.162-9. 10.1093/cercor/13.2.162 . hal-00349699

HAL Id: hal-00349699

<https://hal.science/hal-00349699>

Submitted on 9 Jun 2021

HAL is a multi-disciplinary open access archive for the deposit and dissemination of scientific research documents, whether they are published or not. The documents may come from teaching and research institutions in France or abroad, or from public or private research centers.

L'archive ouverte pluridisciplinaire **HAL**, est destinée au dépôt et à la diffusion de documents scientifiques de niveau recherche, publiés ou non, émanant des établissements d'enseignement et de recherche français ou étrangers, des laboratoires publics ou privés.



Distributed under a Creative Commons Attribution - NonCommercial - NoDerivatives 4.0 International License

Foot, Hand, Face and Eye Representation in the Human Striatum

Emmanuel Gerardin^{1,2,5}, Stéphane Lehéricy^{1,3,5}, Jean-Baptiste Pochon^{1,5}, Sophie Tézenas du Montcel⁶, Jean-François Mangin¹, Fabrice Poupon^{1,3}, Yves Agid⁴, Denis Le Bihan¹ and Claude Marsault³

¹Service Hospitalier Frédéric Joliot, Department of Medical Research, CEA, Orsay and IFR 49, ²Department of Neuroradiology, Hôpital C. Nicolle, Rouen and Departments of ³Neuroradiology, ⁴Neurology, ⁵Inserm EPI 007 and ⁶Biostatistics and Medical Informatics, Hôpital de la Salpêtrière, Paris, France

The present study aimed at determining the three-dimensional organization of striatal activation during foot, hand, face and eye movements. Seven right-handed, healthy volunteers were studied at 1.5 T using blood oxygen level dependent (BOLD) contrast. The tasks consisted of self-paced flexion/extension of the right and left fingers and right toes, contraction of the lips and saccadic eye movements. For foot, hand and face movements, striatal activation was mainly found in the putamen with a somatotopic organization, the foot area being dorsal, the face area more ventral and medial, the hand area in between. Overlap between somatotopic territories was present, more prominent for hand–face than for foot–face or foot–hand areas. In the putamen, the activated areas of the ipsi- and contralateral hand areas were not identical, suggesting a partial segregation of the ipsi- and contralateral striatal sensorimotor projections. For saccadic eye movements, bilateral activation was observed at the junction between the body and the head of the caudate nucleus and in the right putamen. These data present evidence for a somatotopic organization of the human striatum which corresponds with the topography of corticostriatal projections described in the non-human primates.

Introduction

Although the role of the basal ganglia is not precisely understood, numerous studies have demonstrated their involvement in psychomotor behavior (Brooks, 1995; Parent and Hazrati, 1995; Middleton and Strick, 2000) and basal ganglia lesions lead to various hypo- or hyperkinetic movement disorders, such as tremor, dystonia or chorea (Brooks *et al.*, 2000; Obeso *et al.*, 2000). In non-human primates, all cortical projections upon the striatum are topographic (Selemon and Goldman-Rakic, 1985). The sensorimotor cortices mainly project toward the dorsal part of the postcommissural portion of the putamen (Künzle, 1975; Parent and Hazrati, 1995) and the sensorimotor compartment of the striatum is somatotopically organized (Künzle, 1975; Flaherty and Graybiel, 1993). In humans, previous studies have shown the potential of functional magnetic resonance imaging (fMRI) in studying basal ganglia activity during motor tasks (Bucher *et al.*, 1995; Lehéricy *et al.*, 1998; Maillard *et al.*, 2000; Scholz *et al.*, 2000).

Improved knowledge of the organization of the striatal sensorimotor compartment compared with cortical representation is critical for understanding the role of the striatum in motor behavior. The first fMRI study to address the somatotopic representation of the striatum has reported a foot and hand representation in the putamen similar to that observed in non-human primates (Lehéricy *et al.*, 1998). Since then, other reports have further extended these findings for face movements (Maillard *et al.*, 2000) and suggested that activation was less lateralized in the basal ganglia than in the cortex (Scholz *et al.*, 2000).

Several questions remain to be elucidated. Studies in primates (Künzle, 1975; Hikosaka *et al.*, 1989; Alexander and Crutcher,

1990; Parthasarathy *et al.*, 1992; Flaherty and Graybiel, 1993) and preliminary studies in humans (Lehéricy *et al.*, 1998; Maillard *et al.*, 2000; Scholz *et al.*, 2000) have suggested a dorsal to ventro-medial representation of the foot, hand and face area in the putamen, and a predominant representation of eye movements in the caudate nucleus. In humans, a comprehensive study of the three-dimensional (3-D) somatotopic representations of the foot, hand, face and eye areas is still lacking. The degree of overlap between each territory is also still debated (Lehéricy *et al.*, 1998; Maillard *et al.*, 2000). Within the putamen, the projections zones of the ipsi- and contralateral sensorimotor cortices in primates tended to interdigitate rather than completely overlap (Flaherty and Graybiel, 1993). Basal ganglia, which are connected to bilateral cortical areas, may show more frequent bilateral activation during unilateral movements than in the primary sensorimotor cortex.

The aims of the present study were: to determine the 3-D somatotopic representation of the foot, hand, face and eye areas in the striatum; to study the degree of overlap between these territories and between the projection zones of the ipsi- and contralateral hand areas; and to study further the laterality of basal ganglia activation compared with other cortical areas.

Materials and Methods

Subjects

Seven right-handed, healthy volunteers were studied (six men, one woman; age range 24–31 years). The French National Ethics Committee approved the study. All subjects gave informed consent. Handedness was confirmed by a test of laterality (Dellatolas *et al.*, 1988).

Imaging

The MR protocol was carried out using at 1.5 T whole-body system using blood oxygen level dependent (BOLD) fMRI. The head of the subject was immobilized using foam cushions and tape. The protocol included: (i) one sagittal T_1 -weighted image to localize functional and anatomical axial slices; (ii) 20 axial gradient echo echo-planar (EPI) images (5 mm no gap, $T_R = 3000$ ms, $T_E = 60$ ms, bandwidth = 125 kHz, $\alpha = 90^\circ$, FOV = 240×240 mm², matrix size: 64×64 , in-plane resolution = 3.75×3.75 mm); and (iii) 110 axial contiguous inversion recovery 3-D fast SPGR images (1.5 mm thick, $T_1 = 400$ ms, FOV = 240×240 mm², matrix size = 256×256) for anatomical localization. Images were acquired over 60–90 min.

Tasks

The subjects performed five different tasks: (i) flexion/extension of the fingers of the right hand; (ii) flexion/extension of the fingers of the left hand; (iii) flexion/extension of the toes of the right foot; (iv) contraction of the lips; and (v) saccadic eye movements. Saccadic eye movements consisted in horizontal ocular movements of $\sim 20^\circ$ in the leftward and rightward directions performed in the dark with eyes closed. All movements were self-paced. Specific instructions concerning the movements to be made were given to the subjects immediately before the experiment. Movements were shown to the subjects by the experimenter at a rate of ~ 1 Hz, without any explicit instruction given concerning the movement frequency. Before the scan, subjects performed each

Table 1

Coordinates of significant cluster maxima in the group analysis for left and right hands, right foot, lip and eye movements

Anatomic area (Brodmann area)	Hemisphere	Right hand movement				Left hand movement				Right foot movement				Lip movement				Saccadic eye movement			
		x	y	z	T-score	x	y	z	T-score	x	y	z	T-score	x	y	z	T-score	x	y	z	T-score
Cortical areas																					
Inferior frontal area (BA 44/45)	R					54	12	0	6.8					60	12	18	8.0				
	L									-54	9	3	5.6	-51	6	3	5.1	-54	12	6	7.9
Primary sensorimotor area (BA 4)	R					39	-21	69	16.8					60	-6	48	14.5	45	0	54	8.7
	L	-36	-18	66	13.7					-3	-30	66	8.5	-57	-12	42	13.0	-45	-6	54	6.7
Lateral premotor area (BA 6)	R					39	-6	66	14.8					63	12	36	6.6	54	0	48	7.0
	L	-39	-6	57	9.0									-57	6	30	7.8	-57	9	36	6.3
Medial premotor area pre-SMA	R	0	3	51	8.1	6	6	54	9.7					6	6	66	6.4				
	L																				
Medial premotor area post-SMA	R					3	0	66	9.2					3	-3	66	8.3	3	0	66	11.1
	L	0	-3	54	8.3					-3	-15	72	10.2					0	6	54	9.2
Inferior parietal/SII area (BA 40/43)	R	66	-21	30	5.0	63	-21	27	9.5	66	-21	30	5.9	66	-21	27	7.9				
	L	-54	-24	21	7.7	-51	-39	33	5.4	-54	-24	21	5.4	-60	-15	36	11.8				
Striatum																					
Caudate nucleus	R					18	-3	21	5.3					15	3	15	6.0	15	6	15	3.6
	L																	-18	-6	18	4.9
Anterior part of the putamen	R					30	3	3	3.8					30	3	0	4.4	24	6	9	3.7
	L	-27	9	0	4.6	-24	18	3	4.6					-30	3	-3	5.6				
Posterior part of the putamen	R					33	0	3	4.4	-33	-9	18	5.6								
	L	-30	0	-3	5.4					-30	0	9	4.6	-27	-3	3	6.6				
Ventral striatum	R					30	6	-9	4.6					27	15	-9	4.9				
	L													12	-9	9	4.7				
Thalamus	R					15	-12	6	5.4												
	L	-12	-15	6	6.0					-6	-21	15	4.7	-12	-12	12	4.5				
Cerebellum	R	18	-45	-18	15.9					12	-57	-6	6.8	15	-57	-12	7.2	12	-57	-12	6.3
	L					-15	-45	-18	13.0									-12	-39	-3	6.1

Coordinates are in millimeters relative to the anterior commissure, corresponding to the Talairach and Tournoux atlas (Talairach and Tournoux, 1988). Activation differences were considered significant at $P < 0.05$ corrected for multiple comparison inside the volume of the whole brain. For basal ganglia, activation differences were considered significant at $P < 0.001$ and if their spatial extent was >4 voxels ($P < 0.05$ corrected for multiple comparison inside the volume of the striatum). L = left; R = right; SMA = supplementary motor area.

movement for ~15–30 s. The frequency at which the movement was spontaneously performed by the subject was monitored by the experimenter (~1 Hz) before and during the scan. During the scan, the subjects laid in the dark with eyes closed. In the rest condition, they were told to remain in a resting awake state. Task switching instructions were recorded on a digital audio device and presented using standard headphones customized for fMRI experiments and inserted in a noise-protecting helmet that provided isolation from scanner noise. One hundred and twenty-four EPI volumes were acquired over 6 min 12 s for each of the five different tasks. During this period, subjects alternated 15 epochs of 24 s of rest (R) and motor conditions (M): M-R-M-R-M-R-M-R-M-R-M-R-M-R-M-R-M. The first four volumes of each sequence were discarded to reach signal equilibrium.

Analysis

All data analyses were performed with statistical parametric mapping, v. 99 (SPM 99; Wellcome Department of Cognitive Neurology, London, UK). For each subject, anatomical images were transformed stereotactically to Talairach coordinates (Talairach and Tournoux, 1988). The functional scans, corrected for subject motion, were then normalized using the same transformation and smoothed with a Gaussian spatial filter to a final smoothness of 5 mm. Data were analyzed on an individual (subject per subject) basis and across subjects (group analysis using fixed effect analysis).

For group analysis, data from each run were modeled using the general linear model with separate delayed boxcar functions modeling hemodynamic responses of each period of tasks. Overall signal differences between runs were also modeled. A temporal cut-off of 120 s was applied to filter subject-specific low frequency drift related mostly to subject biological rhythms. An SPM $\{F\}$ map was obtained, reflecting significant activated voxels according to the model used ($P < 0.001$). Separate analyses were performed during all motor tasks. To test hypotheses about regionally specific condition effects, the estimates were compared using linear contrasts comparing motor tasks and rest. The resulting set of voxel values for each contrast constituted an SPM $\{T\}$ map. The resulting set of T -values was then thresholded at $P < 0.05$ ($T > 4.78$).

Data were corrected for multiple comparisons inside the volume of the whole brain. For basal ganglia, data were first thresholded at $T > 3.09$ ($P < 0.001$). In these thresholded maps, activated clusters were corrected for multiple comparisons inside the volume of the striatum [small volume correction (Worsley *et al.*, 1996)] and considered significant if their spatial extent was >4 voxels, corresponding to a $P < 0.05$ corrected. In this case, the small volume correction is valid because the statistical analysis is guided by a very strong anatomical hypothesis, with well-defined and invariant anatomical landmarks across subjects (Worsley *et al.*, 1996). To study the degree of overlap between areas activated during the different movements in the striatum, data were analyzed as a function of the statistical thresholds (from $P = 10^{-6}$ to $P = 10^{-2}$) uncorrected for multiple comparison, as the degree of overlap depends on the statistical threshold used to detect activation. For individual analysis, parametric maps were constructed using the same contrasts and thresholds as for the group analysis.

Three-dimensional Anatomical Localization in the Basal Ganglia

The 3-D reconstruction of the basal ganglia was obtained using semi-automatic segmentation software based on region growing. Activation maps in the basal ganglia were superimposed on 3-D reconstructions of the normalized images. Overlap between clusters activated in the striatum during the various motor tasks was calculated using dedicated automatic software.

Results

Striatum

Somatotopic Representation of the Foot, Hand and Face Areas in the Putamen

In the group analysis ($P < 0.05$, corrected for multiple comparison), activation was contralateral to right finger movements and bilateral for foot and left hand movements (Table 1). Bilateral lip movements were associated with bilateral activation in

the putamen. Saccadic eye movements were associated with activation in the anterior part of the right putamen. Within the left putamen, pixels activated during movements of the foot were located in the dorsal part of the structure, pixels activated

during lips movements were located more ventrally and medially, and pixels activated during hand movements were located in between (Figs 1 and 2). No significant pixel was activated in the left putamen during eye movements. Activation largely predominated at the level of the anterior commissure and in the post-commissural putamen (Figs 1 and 2). Some activated pixels were also found in the pre-commissural putamen.

Overlap was observed between the hand, foot and face areas (Table 2, Fig. 2). Table 2 indicates the variation of the degree of overlap between toe, finger and lip areas as a function of the statistical threshold. As expected, the mean volume of activation varied as a function of the statistical threshold, but was larger for the finger and lip than for toe movements (Table 2). Overlap was limited between the foot and both the hand and face areas, observed at the lowest statistical thresholds, whereas the foot area was completely separated from both the hand and face areas at the highest thresholds. Overlap was more pronounced between the hand and face areas, including about half the activated volume and was still present at the highest statistical thresholds. Distances between centers of mass of the three territories tended to increase slightly with increasing levels of statistical stringency. Except at the lowest statistical threshold of $P < 0.01$ (Fig. 2), the somatotopic organization tended more to form oblique rather than horizontal bands on coronal sections.

Individual analysis confirmed that activation was mainly contralateral to the moving fingers or toes (Table 3, Fig. 3), whereas activation in the putamen ipsilateral to the moving limb was weaker and smaller. Overall, foot, hand and face activation

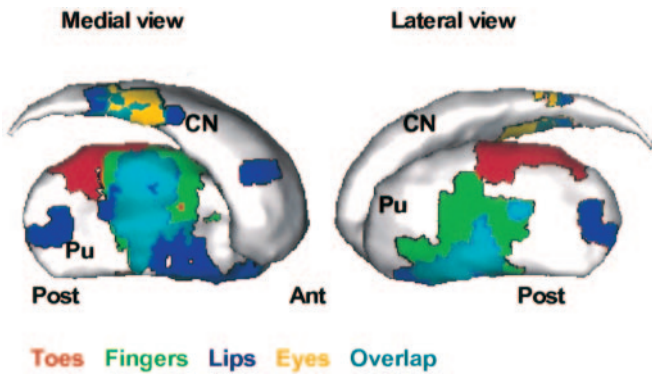


Figure 1. Somatotopic body representation in the left striatum during toe (red), finger (light green), lip (dark blue) and eye (yellow) movements (group analysis). Cluster-level activation differences were considered significant at $P < 0.05$ corrected for multiple comparison inside the volume of the striatum. Overlap between territories is represented in light blue. Within the putamen, pixels activated during movements of the foot were located in the dorsal part of the structure, pixels activated during lip movements were located more ventrally and medially, and pixels activated during hand movements were located in between. Abbreviations: Ant, anterior; CN, caudate nucleus; Post, posterior; Pu, putamen.

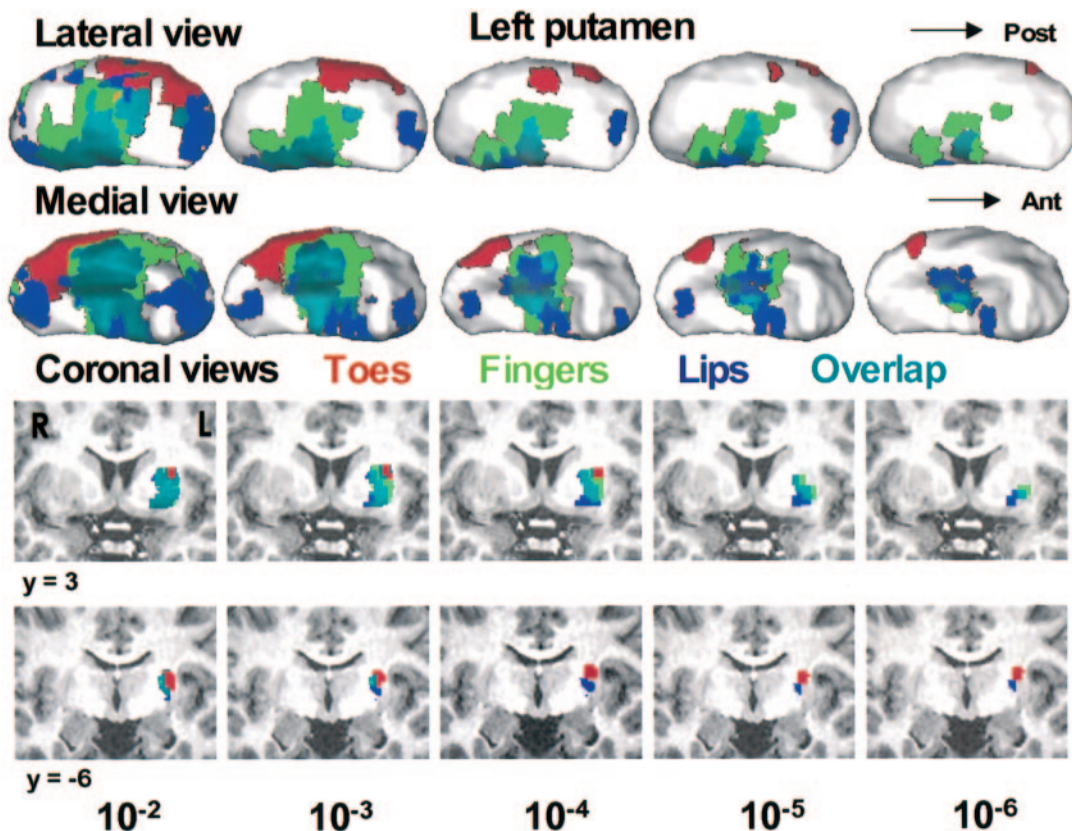


Figure 2. Variation of the overlap between toe (red), finger (light green) and lip (dark blue) areas in the left putamen as a function of the level of statistical stringency (from $P < 0.01$ to $P < 0.000001$, group analysis). Limited overlap was observed between the foot and both the hand and face areas. Overlap (in light blue) was more pronounced between the hand and face areas and still present at the highest statistical thresholds. Except at the lowest statistical threshold of $P < 0.01$, this somatotopic organization tended to form vertico-oblique bands on coronal sections. Abbreviations: Ant, anterior; L, left; Post, posterior; R, right.

Table 2

Overlap between toes, fingers and lips areas in the left putamen as a function of statistical threshold

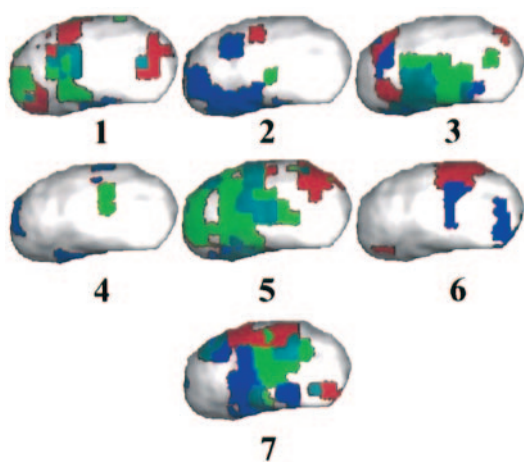
Significance threshold	Volume (mm ³)			COM distance (mm)			Overlap (mm ³)		
	Right hand ^a	Right foot ^b	Lips ^c	Hand versus foot	Hand versus lips	Lips versus foot	Hand versus foot	Hand versus lips	Lips versus foot
$P < 0.01$	5433	2291	5223	12.1	2.5	11.2	815	3477	888
$P < 0.001$	3840	1366	3256	12.6	3	12.7	346	2150	228
$P < 0.0001$	2656	797	1921	13.7	3	13	80	1328	38
$P < 0.00001$	1718	436	1719	16.1	4.6	13.3	34	756	17
$P < 0.000001$	1019	211	986	20.1	5.4	15.5	0	377	0

Coordinates are in millimeters, relative to the anterior commissure, corresponding to the Talairach and Tournoux atlas (Talairach and Tournoux, 1988). COM, center of mass.

^aZ-score = 5.37; coordinates = -30, 0, 0.^bZ-score = 4.57; coordinates = -30, 0, 9.^cZ-score = 6.6; coordinates = -27, -3, 3.**Table 3**

Number of subjects who presented a significant cluster for each of the five contrasts

Anatomic areas (Brodmann area)	Side	Right fingers	Left fingers	Toes	Lips	Eyes
Cortical areas						
Primary sensorimotor area (4)	R	0	7	0	7	7
	L	7	0	7	7	6
SMA	R	5	6	3	7	6
	L	6	2	7	4	6
Inferior parietal/SII area (40.43)	R	2	5	5	5	6
	L	4	3	4	5	5
Subcortical areas						
Caudate nucleus	R	0	2	1	2	5
	L	1	0	1	1	5
Putamen	R	1	4	2	6	7
	L	7	1	7	7	6
Thalamus	R	0	0	0	1	0
	L	2	0	1	2	0
Cerebellum	R	5	2	5	4	4
	L	1	7	1	2	4

Activation differences were considered significant at $P < 0.05$ corrected for multiple comparison inside the volume of the whole brain. For basal ganglia, activation differences were considered significant at $P < 0.001$ and if their spatial extent was >4 voxels ($P < 0.05$ corrected for multiple comparison inside the volume of the striatum).**Figure 3.** Representation in individual subjects of the somatotopic body maps in the left putamen (external view) during toe (red), hand (light green) and lip (dark blue) movements. Overlap between territories is represented in light blue. Activated areas tended to form discrete zones rather than to be distributed in uniform clusters. Anterior, left; posterior, right.

was reproducible across subjects with variability in extent and center of mass. Statistical comparison (signed rank test) of the centers of mass of foot–hand–face activation in the putamen

confirmed that the foot area (mean Talairach coordinates \pm SD: 27.7 ± 1.0 ; -1.8 ± 4.9 ; 8.6 ± 2.3) was located dorsal to the hand (mean Talairach coordinates \pm SD: 28.8 ± 1.2 ; -5.1 ± 9.1 ; 6.8 ± 1.9) and the face areas (mean Talairach coordinates \pm SD: 26.9 ± 1.7 ; -0.4 ± 4.8 ; 3.8 ± 2.6) and that the face area was medial and ventral to the hand area (all P -values <0.02). No difference was found in the rostro-caudal axis. Three-dimensional reconstruction in individual subjects of foot, hand and face areas showed that activated areas tended to form discrete zones rather than to be distributed in uniform clusters (Fig. 3).

Ipsi- and Contralateral Representation of Hand Areas in the Putamen

For hand movement, activation was larger in the contralateral than the ipsilateral putamen. Ipsilateral activation was more prominent for the non-dominant than the dominant hand movements (Table 4). In the left putamen, ipsilateral activation tended to be anterior to contralateral activation (Fig. 4). The activated zones of the ipsi- and contralateral hand areas were largely separated with only moderate overlap (11% of the right hand area in the left putamen at $P < 0.001$). In the right putamen, activation during right hand movement was weak and largely overlapped with activation during left hand movement.

Caudate Nucleus

In the group analysis, the caudate nucleus was not activated

Table 4

Overlap between left and right hand areas in the left and the right putamen as a function of statistical threshold

Significance threshold	Left putamen				Right putamen			
	RH volume (mm ³) ^a	LH volume (mm ³) ^b	COM distance, LH versus RH (mm)	RH versus LH overlap (mm ³)	RH volume (mm ³) ^c	LH volume (mm ³) ^d	LH versus RH (COM distance, mm)	RH versus LH overlap (mm ³)
$P < 0.01$	5433	2078	8	1358	799	5026	4.7	653
$P < 0.001$	3840	1146	11.6	422	0	3418		
$P < 0.0001$	2656	563	13.5	53	0	2108		
$P < 0.00001$	1718	402	13.5	17	0	1419		
$P < 0.000001$	1019	0		0	0	743		

Coordinates are in millimeters relative to the anterior commissure, corresponding to Talairach and Tournoux atlas (Talairach and Tournoux, 1988). COM, center of mass; RH, right hand; LH, left hand.

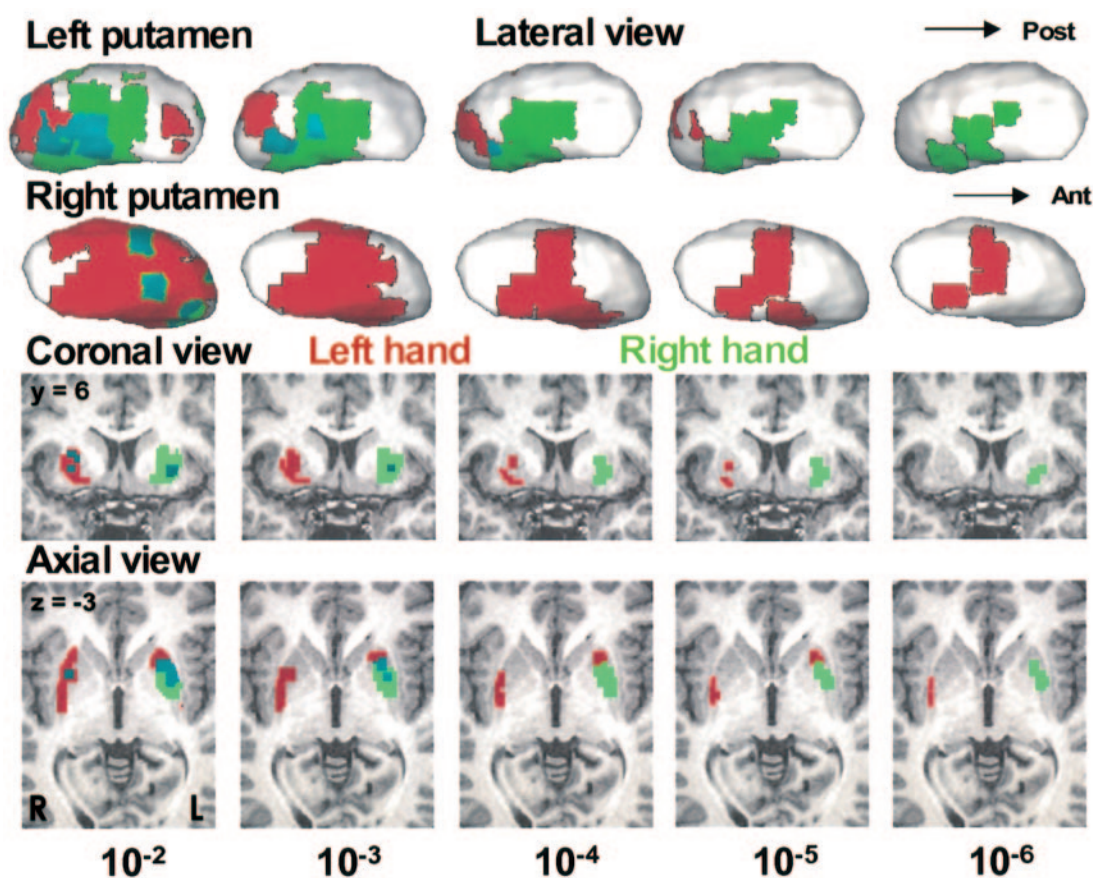
^aZ-score = 5.37; coordinates = -30, 0, 0.^bZ-score = 4.6; coordinates = -24, 18, 3.^cZ-score = 2.43; coordinates = 30, 9, 0.^dZ-score = 4.99; coordinates = 36, 0, 0.

Figure 4. Variation of the overlap (light blue) between the left (red) and the right (light green) hand areas in the putamen as a function of the level of statistical stringency (from $P < 0.01$ to $P < 0.000001$, group analysis). Limited overlap was observed between both hand areas in the left putamen. Activation in the right putamen during right hand movement was small. It was only detectable at the lowest statistical threshold and completely overlapped with left hand activation. Except for the lowest threshold, activation was more bilateral for the left (non-dominant) hand. Abbreviations: Ant, anterior; L, left; Post, posterior; R, right.

during right hand and foot movements (Table 1). Bilateral activation was observed during saccadic eye movements extending from the head of the caudate into the body of the nucleus (Table 1, Fig. 5). Right caudate activation was also observed during left hand and lip movements (Table 1).

Individual analysis showed that caudate activation was more frequent during saccadic eye movements (five out of seven subjects) than during the other tasks (Table 3).

Activation was also observed in the ventral striatum during left hand and lip movements.

Signal Intensity Variation

Signal changes, expressed as the average percent, were slightly lower in the putamen (1.54, 1.89 and 1.67% during finger, lip and toe movements in the left putamen, respectively) than in the primary sensorimotor cortex (1.84, 1.88 and 1.90%

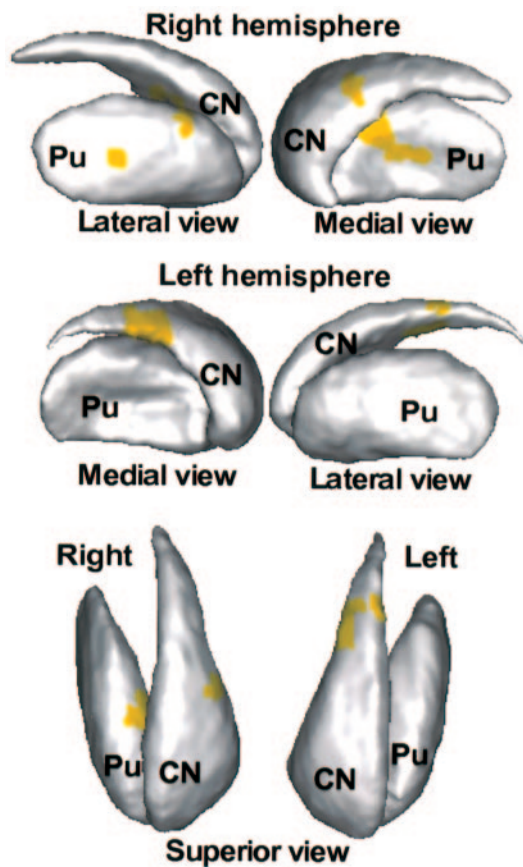


Figure 5. Three-dimensional projection of the activation (in yellow) associated with saccadic eye movements (group analysis). Cluster-level activation differences were considered significant at $P < 0.05$ corrected for multiple comparison inside the volume of the striatum. Bilateral activation was observed at the junction between the body and the head of the caudate nucleus and in the right putamen. Abbreviations: Ant, anterior; CN, caudate nucleus; Post, posterior; Pu, putamen.

during finger, lip and toe movements in the left hemisphere, respectively).

Signal changes were 1.80% in the caudate nucleus and 1.85% in the frontal eye field (FEF) during eye movements.

Thalamus

Activation was observed in the ventrolateral-ventral posterolateral areas of the thalamus (comprising the somatosensory, cerebellar and pallidal afferent territories of the thalamus), contralateral to the moving hand or foot and bilaterally during lip and eye movements (Table 1).

Cortex

For hand, foot and lip movements, activation was observed in the primary sensorimotor cortex, premotor cortex, supplementary motor area, inferior frontal area (BA44/45), secondary somatosensory area (SII) and cerebellum (Table 1). In the primary sensorimotor cortex, activation was always contralateral to the moving fingers or toes (Table 3). Bilateral activation was observed in the inferior frontal area and SII (Tables 1 and 3). For saccadic eye movements, activation was observed in the FEF and supplementary eye field (SEF; Tables 1 and 3).

Discussion

These findings provide functional evidence for a somatotopic

organization of the human striatum similar to that observed in non-human primates, with a foot-hand-face disposition along a dorsolateral to ventromedial gradient and a predominant representation of saccadic eye movements in the caudate nucleus. Overlap between somatotopic territories was present, which may allow interaction between information about different body parts. In the putamen, the activated areas of the ipsi- and contralateral hand areas were not identical, suggesting a partial segregation of the ipsi- and contralateral striatal sensorimotor projections.

Somatotopic Representation of Foot, Hand and Face in the Putamen

The 'foot' area was located in the dorsal part of the structure, the 'face' area was located more ventrally and medially, and the 'hand' area was located in between (Figs 1 and 2). Studies in rats (Brown and Sharp, 1995) and primates (Künzle, 1975; Alexander and DeLong, 1985; Liles and Updyke, 1985; Kimura, 1990; Flaherty and Graybiel, 1993; Parent and Hazrati, 1995) have shown a pronounced degree of somatotopic coding in corticostriatal projections. Anatomical studies of the somatotopic body representation in the striatum using anterograde tracers (Künzle, 1975; Flaherty and Graybiel, 1993) have reported a similar foot-dorsal, face-ventromedial organization, and the arm area between the foot and the face areas. Electrophysiological studies using microstimulation and microelectrode recordings in the putamen have provided similar results (Alexander and DeLong, 1985; Liles and Updyke, 1985; Kimura, 1990, 1992). A more rostral situation of the 'foot' area has also been described, but was not found in the present study. However, unlike the somatotopic maps of the sensorimotor cortex, striatal projections from different body parts of the primary sensorimotor cortex seem to be distributed in patches in the matrix, with a confluent dense 'main field' and fainter satellite zones (Flaherty and Graybiel, 1993). This pattern has been compared with the fractured somatotopy described in the cerebellum with multiple patchy representation of body parts. This raises the question of whether such an organization is specific to the squirrel monkey and related to its different locomotor behavior (Flaherty and Graybiel, 1993), or whether it is common across species and represents a characteristic of striatal somatotopy.

In humans, the present results confirm our preliminary study at 3 T for foot and hand representation (Lehéricy *et al.*, 1998). More recently, a triangular pattern has been reported in the putamen, with the face medial to foot and hand representation (Maillard *et al.*, 2000). The present study is more in favor of somatotopic pattern in vertico-oblique bands on coronal sections, with the 'face' area more ventral and medial and the foot more dorsal and lateral (Fig. 2), in agreement with animal studies (Alexander and Crutcher, 1990; Brown and Sharp, 1995). Centers of mass distances between territories tended to be higher in the present study than previously reported (Maillard *et al.*, 2000). The currently limited spatial resolution of fMRI studies may account for these differences between studies. Individual analysis suggested that activated areas were not distributed uniformly, but rather tended to appear as discrete zones reminiscent of the patchy distribution observed in primates. It remains to be determined whether this organization reflects the presence of a single discontinuous body map or of separate functionally differentiated body maps in the putamen (Flaherty and Graybiel, 1993). Given the limited spatial resolution of conventional magnets compared to histological studies, this patchy distribution needs to be confirmed at higher spatial resolution. Studies at very high field strength may help elucidate

this point (Yacoub *et al.*, 2001). Furthermore, very high field MRI may also provide information on other smaller basal ganglia nuclei, such as the pallidum, the subthalamic nucleus and the substantia nigra, which are not yet accessible to conventional magnets.

Segregation or Convergence of Sensorimotor Areas

Overlap between somatotopic territories is a matter of debate: it may be limited (Lehéricy *et al.*, 1998) or more prominent (Maillard *et al.*, 2000). Overlap between distant cortical territories in the putamen may have functional significance in allowing interaction between information about different body parts. Using fMRI, the degree of overlap depends on several factors, such as the spatial resolution of functional images, data processing, which often includes image spatial filtering, field strength and the statistical threshold used to detect activation. Results in the present studies show that overlap between foot, hand and lip territories was only partial, mainly observed at the periphery of each territory. Overlap was limited between the 'foot' and the other two territories and larger between the 'hand' and 'face' territories. This fits well with animal data. In monkeys, although overlap was uncommon for the dense 'main field' of distant somatotopic zones, it was the rule for the fainter satellite zones surrounding these dense zones, even for body parts as distant as foot and hand (Flaherty and Graybiel, 1993).

Ipsi- versus Contralateral Representation of Hand Areas in the Putamen

In contrast to the primary sensorimotor cortex, in which activation was always contralateral to the moving fingers or toes, activation in the putamen was bilateral for unilateral hand and foot movement, confirming previous reports (Scholz *et al.*, 2000). For hand movement, activation was larger in the contralateral than the ipsilateral putamen. Although motor cortical areas project mainly to ipsilateral subcortical structures, a substantial fraction of these connections also project contralaterally via the corpus callosum (Wiesendanger *et al.*, 1996). In monkeys, the primary sensorimotor cortex sends a modest contralateral projection (Flaherty and Graybiel, 1993; Wiesendanger *et al.*, 1996), whereas the SMA sends nearly symmetric bilateral projections (McGuire *et al.*, 1991; Wiesendanger *et al.*, 1996). Similarly, pallido-thalamic projections are known to be bilateral (Hazrati and Parent, 1991). These bilateral projections probably represent the anatomical substrate of bilateral striatal activation. In monkeys, contra- and ipsilateral hand projections formed distinguishable input system in the putamen, largely avoiding each other (Flaherty and Graybiel, 1993). This organization suggests that the putamen segregate motor information about the ipsilateral and contralateral distal part of the body (Flaherty and Graybiel, 1993). The present results are consistent with animal data (Flaherty and Graybiel, 1993), as the projection zones of the ipsi- and contralateral hand areas in the left putamen were largely separated, with only moderate overlap. However, ipsilateral activation tended to be anterior to contralateral activation, in contrast to non-human primates in which projections were at approximately the same antero-posterior levels (Flaherty and Graybiel, 1993). This may be due to the concomitant activation of the SMA territory in the putamen, which has been located more rostrally than the primary sensorimotor territory in monkeys (Selemon and Goldman-Rakic, 1985).

Thalamic activation was only observed in the hemisphere contralateral to the moving hand and foot. Thus, information related to unilateral limb movement may be conveyed through the basal ganglia in both hemispheres and converge to the

contralateral thalamus. This point needs to be confirmed, however.

Saccadic Eye Movement and Caudate Nucleus Activation

Saccadic eye movements were associated with bilateral activation in the caudate nucleus. Caudate nucleus activation was more specifically observed during saccadic eye movements, whereas caudate activation was rarely observed during the other tasks. Caudate nucleus activation extended from the head of the caudate well into the body of the nucleus, predominating at the same coronal level of the anterior pole of the thalamus. Activation in the right putamen, also observed during saccadic eye movements, was located nearby right caudate activation (Fig. 4). These data are in agreement with non-human primate studies (Künzle and Akert, 1977; Shook *et al.*, 1991; Parthasarathy *et al.*, 1992). Anatomical studies showed that the FEF and SEF projected principally to the caudate nucleus and adjoining parts of the putamen. Within the caudate nucleus, the projection field of these two regions was located at the coronal level of the rostral pole of the thalamus (Künzle and Akert, 1977), or extended from the level of the anterior pole of the putamen to the posterior body of the caudate nucleus (Shook *et al.*, 1991; Parthasarathy *et al.*, 1992). In contrast to these studies, the anterior part of the caudate nucleus, which also receives SEF and FEF projections, was not activated. Electrophysiological studies in primates have suggested that neurons in more rostral parts of the caudate nucleus were activated during tasks which require higher-order processes than simple saccadic eye movements (Hikosaka *et al.*, 1989). In humans, a previous fMRI study has reported a predominance of caudate activation during saccadic eye movements, without further precision on the localization (Scholz *et al.*, 2000).

Cortico-subcortical Loop

Motor-related activation occurred mainly in the putamen at the level of the anterior commissure and in the post-commissural putamen. This area corresponds to the sensorimotor territory of the striatum in primates, the major target of cortical efferents from the primary motor and somatosensory cortices (Künzle, 1975; Alexander and DeLong, 1985; Liles and Updyke, 1985; Alexander and Crutcher, 1990; Kimura, 1990; Flaherty and Graybiel, 1993; Brown and Sharp, 1995; Parent and Hazrati, 1995). In positron emission tomography (PET) and fMRI studies, Talairach coordinates of peak activation in the putamen during simple finger movements, such as a highly practiced sequence (Jenkins *et al.*, 1994), a repetitive movement of the middle finger (Jueptner *et al.*, 1997), or flexion/extension of all fingers (Lehéricy *et al.*, 1998), were similar to those observed in the present study. The same applies for foot movement: -27, -6, 11 (Lehéricy *et al.*, 1998) compared with -30, 0, 9 in the present study. Small interstudy variation may be due the limited spatial resolution of functional images and to differences in data analysis. In these tasks and in the present tasks, cortical activation was mainly restricted to the motor cortex, the posterior SMA and the cerebellum. However, when subjects learned a new sequence of finger movements with additional cognitive demand (Jenkins *et al.*, 1994; Jueptner *et al.*, 1997), generated a random sequence of finger movements making a new decision on each trial as to which finger to move (Jueptner *et al.*, 1997), or imagined hand movements (Gerardin *et al.*, 2000), more anterior parts of the striatum were activated (caudate nucleus and putamen rostral to the anterior commissure), as well as prefrontal cortex and the anterior cingulate area. Thus, the different territories of the basal ganglia may be activated during

movements in relation to specific cortical areas corresponding to the cortico-basal ganglia-thalamo-cortical loops described in monkeys (Alexander and Crutcher, 1990; Parent and Hazrati, 1995).

In summary, these results show the 3-D somatotopic organization of the human striatum, confirming the foot-hand-face disposition along a dorsal to ventromedial gradient in the putamen. Overlap between somatotopic territories was present, although variable, depending on the level of statistical stringency. This overlap may allow interaction between information about different body parts. Comparison between the projection zones of the ipsi- and contralateral hand areas in the left putamen suggested that they were not identical, as described in primate studies. Saccadic eye movements were more specifically associated with caudate nucleus activation, in line with animal studies.

Notes

This research was supported by grants from the Délégation à la Recherche Clinique (DRC) and the Assistance Publique-Hôpitaux de Paris (CRC 96067).

Address correspondence to Dr Stéphane Lehéricy, Service de Neuroradiologie, Bâtiment Babinski, Hôpital de la Salpêtrière, 47 Bd de l'Hôpital, 75651 Paris Cedex, France. Email: stephane.lehericy@psl.ap-hop-paris.fr.

References

- Alexander GE, Crutcher MD (1990) Functional architecture of basal ganglia circuits: neuronal substrates of parallel processing. *Trends Neurosci* 13:266–271.
- Alexander GE, DeLong MR (1985) Microstimulation of the primate neostriatum. II. Somatotopic organization of striatal microexcitable zones and their relation to neuronal response properties. *J Neurophysiol* 53:1417–1430.
- Brooks DJ (1995) The role of the basal ganglia in motor control: contributions from PET. *J Neurol Sci* 128:1–13.
- Brooks DJ, Piccini P, Turjanski N, Samuel M (2000) Neuroimaging of dyskinesia. *Ann Neurol* 47(Suppl. 1):S154–S158.
- Brown LL, Sharp FR (1995) Metabolic mapping of rat striatum: somatotopic organization of sensorimotor activity. *Brain Res* 686:207–222.
- Bucher SF, Seelos KC, Stehling M, Oertel WH, Paulus W, Reiser M (1995) High resolution activation mapping of basal ganglia with functional magnetic resonance imaging. *Neurology* 45:180–182.
- Dellatolas G, De Agostini M, Jallon P, Poncet M, Rey M, Lellouch J (1988) Mesure de la préférence manuelle par autoquestionnaire dans la population française adulte. *Rev Psychol Appl* 38:117–136.
- Flaherty AW, Graybiel AM (1993) Two input systems for body representations in the primate striatal matrix: experimental evidence in the squirrel monkey. *J Neurosci* 13:1120–1137.
- Gerardin E, Sirigu A, Lehéricy S, Poline JB, Gaymard B, Marsault C, Agid Y, Le Bihan D (2000) Dissociable neural networks for real and imagined hand movements. *Cereb Cortex* 10:1093–1104.
- Hazrati LN, Parent A (1991) Contralateral pallidothalamic and pallidotegmental projections in primates: an anterograde and retrograde labeling study. *Brain Res* 567:212–223.
- Hikosaka O, Sakamoto M, Usui S (1989) Functional properties of monkey caudate neurons. I. Activities related to saccadic eye movements. *J Neurophysiol* 61:780–798.
- Jenkins IH, Brooks DJ, Nixon PD, Frackowiak RSJ, Passingham RE (1994)

- Motor sequence learning: a study with positron emission tomography. *J Neurosci* 14:3775–3790.
- Jueptner M, Frith CD, Brooks DJ, Frackowiak RSJ, Passingham RE (1997) Anatomy of motor learning. II. Subcortical structures and learning by trial and error. *J Neurophysiol* 77:1325–1337.
- Kimura M (1990) Behaviorally contingent property of movement-related activity of the primate putamen. *J Neurophysiol* 63:1277–1296.
- Kimura M (1992) Behavioral modulation of sensory responses of primate putamen neurons. *Exp Brain Res* 89:473–477.
- Künzle H (1975) Bilateral projections from the precentral motor cortex to the putamen and other parts of the basal ganglia. An autoradiographic study in *Macaca fascicularis*. *Brain Res* 88:195–209.
- Künzle H, Akert K (1977) Efferent connections of cortical, area 8 (frontal eye field) in *Macaca fascicularis*. A reinvestigation using the autoradiographic technique. *J Comp Neurol* 173:147–164.
- Lehéricy S, Van De Moortele P-F, Lobel E, Paradis A-L, Vidailhet M, Neveu P, Agid Y, Marsault C, Le Bihan D (1998) Somatotopic organization of striatal activation during finger and toe movement: a 3 T fMRI study. *Ann Neurol* 44:398–404.
- Liles SL, Updyke BV (1985) Projection of the digit and wrist area of precentral gyrus to the putamen: relation between topography and physiological properties of neurons in the putamen. *Brain Res* 339:245–255.
- McGuire PK, Bates JF, Goldman-Rakic PS (1991) Interhemispheric integration: II. Symmetry and convergence of the corticostriatal projections of the left and right principal sulcus (PS) and the left and the right supplementary motor area (SMA) of the rhesus monkey. *Cereb Cortex* 1:408–417.
- Maillard L, Ishii K, Bushara K, Waldvogel D, Schulman AE, Hallett M (2000) Mapping of the basal ganglia. fMRI evidence for somatotopic representation of face, hand, and foot. *Neurology* 55:377–383.
- Middleton FA, Strick PL (2000) Basal ganglia and cerebellar loops: motor and cognitive circuits. *Brain Res Rev* 31:236–250.
- Obeso JA, Rodriguez-Oroz MC, Rodriguez M, Lanciego JL, Artieda J, Gonzalo N, Olanow CW (2000) Pathophysiology of the basal ganglia in Parkinson's disease. *Trends Neurosci* 23(Suppl.):S8–S19.
- Parent A, Hazrati L-N (1995) Functional anatomy of the basal ganglia. I. The cortico-basal ganglia-thalamo-cortical loop. *Brain Res Rev* 20:91–127.
- Parthasarathy HB, Schall JD, Graybiel AM (1992) Distributed but convergent ordering of corticostriatal projections: analysis of the frontal eye field and the supplementary eye field in the macaque monkey. *J Neurosci* 12:4468–4488.
- Scholz VH, Flaherty AW, Kraft E, Keltner JR, Kwong KK, Chen YI, Rosen BR, Jenkins BG (2000) Laterality, somatotopy and reproducibility of the basal ganglia and motor cortex during motor tasks. *Brain Res* 879:204–215.
- Selemon LD, Goldman-Rakic PS (1985) Longitudinal topography and interdigitation of corticostriatal projections in the rhesus monkey. *J Neurosci* 5:776–794.
- Shook BL, Schlag-Rey M, Schlag J (1991) Primate supplementary eye field. II. Comparative aspects of connections with the thalamus, corpus striatum, and related forebrain nuclei. *J Comp Neurol* 307:562–583.
- Talairach J, Tournoux P (1988) Co-planar stereotaxic atlas of the human brain. New York: Thieme.
- Wiesendanger M, Rouiller EM, Kazennikov O, Perrig S (1996) Is the supplementary motor area a bilaterally organized system? *Adv Neurol* 70:85–93.
- Worsley KJ, Marrett S, Neelin P, Vandal AC, Friston KJ, Evans AC (1996) A unified statistical approach for determining significant signals in images of cerebral activation. *Hum Brain Mapp* 4:58–73.
- Yacoub E, Shmuel A, Pfeuffer J, Van De Moortele PF, Adriany G, Andersen P, Vaughan JT, Merkle H, Ugurbil K, Hu X (2001) Imaging brain function in humans at 7 Tesla. *Magn Reson Med* 45:588–594.