



# Sensitivity analysis and parameter estimation for the distributed modeling of infiltration excess overland flow

William Castaings, Denis Dartus, François-Xavier Le Dimet, Georges-Marie Saulnier

## ► To cite this version:

William Castaings, Denis Dartus, François-Xavier Le Dimet, Georges-Marie Saulnier. Sensitivity analysis and parameter estimation for the distributed modeling of infiltration excess overland flow. Hydrology and Earth System Sciences Discussions, 2007, 4 (1), pp.363-405. 10.5194/hessd-4-363-2007 . hal-00330794

**HAL Id: hal-00330794**

**<https://hal.science/hal-00330794>**

Submitted on 18 Jun 2008

**HAL** is a multi-disciplinary open access archive for the deposit and dissemination of scientific research documents, whether they are published or not. The documents may come from teaching and research institutions in France or abroad, or from public or private research centers.

L'archive ouverte pluridisciplinaire **HAL**, est destinée au dépôt et à la diffusion de documents scientifiques de niveau recherche, publiés ou non, émanant des établissements d'enseignement et de recherche français ou étrangers, des laboratoires publics ou privés.

Papers published in *Hydrology and Earth System Sciences Discussions* are under open-access review for the journal *Hydrology and Earth System Sciences*

# Sensitivity analysis and parameter estimation for the distributed modeling of infiltration excess overland flow

W. Castaings<sup>1,\*</sup>, D. Dartus<sup>2</sup>, F.-X. Le Dimet<sup>1</sup>, and G.-M. Saulnier<sup>3</sup>

<sup>1</sup>LMC-IMAG UMR 5523 (CNRS, INPG, UJF, INRIA) Grenoble, France

<sup>2</sup>IMFT UMR 5502 (CNRS, INP, UPS) Toulouse, France

<sup>3</sup>LTHE UMR 5564 (CNRS, INPG, IRD, UJF) Grenoble, France

\* now at: EC/JRC/IPSC Ispra, Italy

Received: 17 January 2007 – Accepted: 12 February 2007 – Published: 22 February 2007

Correspondence to: W. Castaings (william.castaings@jrc.it)

HESSD

4, 363–405, 2007

**Adjoint sensitivity  
analysis and  
parameter estimation**

W. Castaings et al.

Title Page

Abstract

Introduction

Conclusions

References

Tables

Figures

◀

▶

◀

▶

Back

Close

Full Screen / Esc

Printer-friendly Version

Interactive Discussion

EGU

Abstract

The variational methods widely used for other environmental systems are applied to a spatially distributed flash flood model coupling kinematic wave overland flow and Green Ampt infiltration. Using an idealized configuration where only parametric uncertainty is addressed, the potential of this approach is illustrated for sensitivity analysis and parameter estimation. Adjoint sensitivity analysis provides an extensive insight into the relation between model parameters and the hydrological response and enables the use of efficient gradient based optimization techniques.

1 Introduction

Critical and interrelated issues like state and parameter estimation, sensitivity and uncertainty analysis have received growing attention from the hydrological community. Since effective parameters are not directly measurable and potentially compensate for various sources of uncertainty, the focus has been primarily on parametric uncertainty. Experiences on the calibration of lumped conceptual models using a single objective function revealed that its response surface contains several regions of attraction, discontinuous derivatives and other geometrical properties compromising the use local methods, especially those using derivative information (Duan et al., 1992). Therefore, most applications and methodological developments to model calibration entail a stochastic exploration of the parameter space (global optimization) using computationally intensive Monte Carlo methods and/or evolutionary algorithms (Beven and Binley, 1992; Duan et al., 1992; Yapo et al., 1997; Kuczera and Parent, 1998; Bastidas et al., 1999; Vrugt et al., 2003a,b). Assuming that parametric uncertainty can depict the other sources of uncertainty, all plausible parameter sets are retained depending on their ability to meet different believability criteria (threshold on likelihood measure, Pareto optimality).

Significant efforts have been dedicated to the quantification and reduction of predic-

Adjoint sensitivity analysis and parameter estimation

W. Castaings et al.

Title Page

AbstractIntroduction

ConclusionsReferences

TablesFigures

◀▶

◀▶

BackClose

Full Screen / Esc

Printer-friendly Version

Interactive Discussion

tive uncertainty, but most contributions are characterized by a very limited assessment of model structure. Sensitivity analysis (SA) is mostly perceived as an additional information derived from stochastic simulations whereas it should be considered as a crucial and mandatory step in the modeling process. An extensive analysis of the relation between model input factors and output variables is an essential step to identify potential deficiencies in model structures and formulation, explain and correct the lack of fit of hydrological models, provide guidance for model reduction and parametrization, analyse the information content of available observations, and lastly describe the subspace (i.e. of the original control space) driving predictive uncertainty.

The Regional Sensitivity Analysis (RSA) of [Hornberger and Spear \(1981\)](#) inspired numerous applications and developments for the analysis of hydrological systems which includes the contribution of [Beven and Binley \(1992\)](#). Some authors address the extension to multiples objectives ([Bastidas et al., 1999](#)) or the combination with the powerful variance-based Global Sensitivity Analysis Methods [Ratto et al. \(2001\)](#), combination which is particularly suited for the identification of the input factors driving behavioral simulations (Monte Carlo Filtering). By combining RSA with recursive estimation techniques ([Vrugt et al., 2002](#), [Wagener et al., 2003](#)) really investigate the model behavior. Apart from RSA-based methods, relatively sophisticated SA techniques received the attention of practitioners using complex models structures ([Christiaens and Feyen, 2002](#); [Yatheendradas et al., 2005](#), [Sieber and Uhlenbrook, 2005](#)); including non point source pollution modeling ([Francos et al., 2003](#); [Muleta and Nicklow, 2004](#); [van Griensven et al., 2006](#)). Those were applied only recently to lumped hydrological models ([Ratto et al., 2006](#); [Tang et al., 2006](#)). In accordance with the paradigm currently adopted for the calibration of hydrological models, Global Sensitivity Analysis methods are characterized by a multi-dimensional averaging ([Saltelli et al., 2000](#)) of the sensitivity measures over the feasible parameter space.

From the forcing to the initial condition and the model parameters, the dimensionality of the input space is greatly increased. Since the commonly employed global sensitivity and non-smooth optimization techniques are sampling based, dimension reduction is

**Adjoint sensitivity  
analysis and  
parameter estimation**

W. Castaings et al.

Title Page	
Abstract	Introduction
Conclusions	References
Tables	Figures
◀	▶
◀	▶
Back	Close
Full Screen / Esc	
Printer-friendly Version	
Interactive Discussion	

necessary and usually operated using very simple heuristics. In fact, most of the approaches adopted for the automatic calibration of hydrological models were developed for lumped conceptual models. They have been transferred to distributed models by means of a drastic reduction of the control space. Scalar multipliers are used to adjust spatial distributions derived from a priori information. The same type of strategy is employed in order to make Global Sensitivity Analysis methods computationally tractable (Yatheendradas et al., 2005; Hall et al., 2005).

The distributed modeling of catchment hydrology offers great potential for understanding and predicting the rainfall-runoff transformation. However, the curse of dimensionality associated to scarce observations of the physical system make some of the previously mentioned issues very challenging. Since the commonly used methods can be limited in handling computer intensive spatially distributed systems, some of the lessons learned from other geophysical applications (such as meteorology and oceanography) using high dimensional and computer intensive models should be exploited.

For instance, the variational methods provide a unified framework to investigate both sensitivity analysis and parameter estimation. The adjoint state method, yielding to an efficient calculation of the derivatives of an objective function with respect to all control variables, is particularly suited when the dimension of the response function to be analysed (or cost function to be optimized) is small compared to the number of inputs to be prescribed (dimension of the control space). The variational methods have contributed to numerous applications related to the analysis and forecasting of meteorological and oceanographic systems (data assimilation, sensitivity analysis, observation targeting).

With the growing complexity of hydrological models, the theoretical and methodological developments carried out in the variational framework (Le Dimet and Talagrand, 1986; Hall and Cacuci, 1983; Navon, 1998; Ghil and Malanotte-Rizzoli, 1991; Bennett, 1992 to cite a few) are of great interest for various problems related to hydrological modelling. Early applications of variational methods to hydrological systems have been carried out for parameter estimation and sensitivity analysis in groundwa-

## Adjoint sensitivity analysis and parameter estimation

W. Castaings et al.

Title Page

Abstract

Introduction

Conclusions

References

Tables

Figures

◀

▶

◀

▶

Back

Close

Full Screen / Esc

Printer-friendly Version

Interactive Discussion

ter hydrology (Chavent, 1974; Sun and Yeh, 1990). The state estimation problem was also addressed in this deterministic framework in land surface hydrology (Callies et al., 1998; Margulis and Entekhabi, 2001; Reichle, 2000) and more recently in river hydraulics (Piasecki and Katopodes, 1997; Mazauric, 2003; Belanger and Vincent, 2005; Honnorat et al., 2006). Concerning the transformation of rainfall into runoff very few attempts have been made but provide interesting contributions to data fitting (state and parameter estimation) in catchment scale hydrology (White et al., 2003; Seo et al., 2003a,b,c).

In this prospective study, using a very simple and very common model structure, the potential of variational methods for sensitivity analysis and parameter estimation in rainfall-runoff modelling is illustrated. The paper is structured as follows: a very brief overview of the deterministic framework is followed by the presentation of the model and case study adopted. Then, representative examples are provided for the sensitivity analysis of scalar and vectorial responses. Lastly, adjoint sensitivities are used for the resolution and regularization of the inverse problem to be solved for model calibration.

## 2 Brief overview of variational methods

Variational methods provide a deterministic framework for the theoretical formulation and numerical approximation of numerous problems related to the analysis and control of physical systems, especially those governed by partial differential equations (Lions, 1968). The mathematical formalism, based on functional analysis and differential calculus, was largely expanded by related disciplines such as optimal control theory and optimization. Sensitivity analysis and nonlinear least squares estimation (state and parameters) can be addressed using a unified framework. For a very succinct presentation of the approach, let us consider a generic model of the form

$$\begin{cases} \frac{\partial \mathbf{x}}{\partial t} = M(\mathbf{x}, \boldsymbol{\alpha}) \\ \mathbf{x}(t_0) = 0 \end{cases} \quad (1)$$

## Adjoint sensitivity analysis and parameter estimation

W. Castaings et al.

Title Page

Abstract

Introduction

Conclusions

References

Tables

Figures

◀

▶

◀

▶

Back

Close

Full Screen / Esc

Printer-friendly Version

Interactive Discussion

where  $\mathbf{x}$  is the state variable of dimension  $N_s$ ,  $M$  a nonlinear operator (after space discretization) and  $\boldsymbol{\alpha}$  a variable of dimension  $N_p$  denoting the model parameters. Assuming that we are interested in analysing a given aspect of the system behavior or in fitting data with the model diagnostic variables, we define a scalar functional:

$$J(\mathbf{x}, \boldsymbol{\alpha}) = \int_{t_0}^{t_f} \phi(t; \mathbf{x}, \boldsymbol{\alpha}) dt \quad (2)$$

where  $\phi$  is a nonlinear function of the state variables and model parameters. Depending on the targeted objective,  $\phi$  will represent a quantity of interest (model response) or a cost function measuring the misfit between the simulated variables and the observations. The gradient of the scalar functional  $J$  with respect to  $\boldsymbol{\alpha}$  at the point  $\bar{\boldsymbol{\alpha}}$ :

$$\nabla_{\boldsymbol{\alpha}} J(\bar{\mathbf{x}}, \bar{\boldsymbol{\alpha}}) = \left( \frac{\partial J}{\partial \alpha_1}, \dots, \frac{\partial J}{\partial \alpha_{N_p}} \right)_{\bar{\boldsymbol{\alpha}}}^T \quad (3)$$

provides a quantitative measure (local measure) for the relative influence of the various model parameters on the response of interest. When  $\phi$  is a performance measure to be optimized, the derivatives can drive very efficient algorithms for the estimation of the optimal  $\boldsymbol{\alpha}^*$  minimizing the misfit with observations. A very common and straightforward technique for the evaluation of the gradient components consists in running the model twice with different values for the parameters. For the  $i$ th component, this first order approximation is given by

$$s_i = \left[ \frac{\partial J}{\partial \alpha_i} \right]_{\bar{\boldsymbol{\alpha}}} \approx \frac{J(\bar{\alpha}_1, \dots, \bar{\alpha}_i + \varepsilon, \dots, \bar{\alpha}_{N_p}) - J(\bar{\boldsymbol{\alpha}})}{\varepsilon} \quad (4)$$

where  $\varepsilon$  refers to a perturbation applied to the nominal value of  $\alpha_i$ . Even if the precision and efficiency of this technique are very limited, it allows a very quick implementation. Because of the inherent truncation and roundoff errors, the choice of  $\varepsilon$  is critical. Furthermore,  $N_p + 1$  evaluations of the model are necessary and this number is

## Adjoint sensitivity analysis and parameter estimation

W. Castaings et al.

Title Page

Abstract

Introduction

Conclusions

References

Tables

Figures

◀

▶

◀

▶

Back

Close

Full Screen / Esc

Printer-friendly Version

Interactive Discussion

greatly increased for more accurate approximations (central difference or second order approximation). Using the formalism employed by [Cacuci \(1981\)](#), let us consider the Gâteaux derivative, a generalization of the concept of directional derivative in differential calculus, of the objective function at the point  $\bar{\alpha}$  in the direction  $\hat{\alpha}$ :

$$\hat{J}(\bar{\alpha}, \hat{\alpha}) = \int_{t_0}^{t_f} \left( \left[ \frac{\partial \phi}{\partial \mathbf{x}} \right]_{\bar{\alpha}} \hat{\mathbf{x}} + \left[ \frac{\partial \phi}{\partial \alpha} \right]_{\bar{\alpha}} \hat{\alpha} \right) dt \quad (5)$$

where  $\hat{\mathbf{x}}$  refers to the variations on the state variable  $\mathbf{x}$  resulting from perturbations on the parameters  $\alpha$  in the direction  $\hat{\alpha}$ . Given that  $\mathbf{x}$  is governed by the generic model given by Eq. (1),  $\hat{\mathbf{x}}$  is solution of the following system:

$$\begin{cases} \frac{\partial \hat{\mathbf{x}}}{\partial t} - \left[ \frac{\partial M}{\partial \mathbf{x}} \right]_{\bar{\alpha}} \hat{\mathbf{x}} = \left[ \frac{\partial M}{\partial \alpha} \right]_{\bar{\alpha}} \hat{\alpha} \\ \mathbf{x}(t_0) = 0 \end{cases} \quad (6)$$

where  $[\partial M / \partial \mathbf{x}]$  represent the Jacobian of the model with respect to the state variables. The system given by Eq. (6) is the so-called tangent linear model. In order to obtain  $J(\bar{\mathbf{x}}, \bar{\alpha})$ , this system has to be solved and the composition with Eq. (5) leads to the quantity of interest. The problem with this approach is that only the precision problem is addressed. In fact, since  $\hat{J}(\bar{\alpha}, \hat{\alpha}) = \langle \nabla_{\alpha} J, \hat{\alpha} \rangle$ , the operation should be repeated for all the directions in the parameter space in order to obtain all the components of the gradient. In order to circumvent this problem, the linearity of  $\hat{J}(\bar{\alpha}, \hat{\alpha})$  with respect to  $\hat{\alpha}$  is produced using the introduction of an auxiliary variable  $\mathbf{p}$  (of dimension  $N_s$ ). It can be shown ([Lions, 1968](#)) that if  $\mathbf{p}$  is governed by the following system

$$\begin{cases} \frac{\partial \mathbf{p}}{\partial t} + \left[ \frac{\partial M}{\partial \mathbf{x}} \right]_{\bar{\alpha}}^T \mathbf{p} = \left[ \frac{\partial \phi}{\partial \mathbf{x}} \right]_{\bar{\alpha}} \\ \mathbf{p}(t_f) = 0 \end{cases} \quad (7)$$

the gradient is given by

$$\nabla_{\alpha} J = \int_{t_0}^{t_f} \left( \left[ \frac{\partial \phi}{\partial \alpha} \right]_{\bar{\alpha}} - \left[ \frac{\partial M}{\partial \alpha} \right]_{\bar{\alpha}}^T \mathbf{p} \right) dt \quad (8)$$



where  $[\partial M / \partial \mathbf{x}]^T$  denotes the transposed of the Jacobian of the model with respect to the state variables. It is important to note that  $\hat{\mathbf{x}}$  and  $\hat{\boldsymbol{\alpha}}$  do not appear in Eqs. (7) and (8). Therefore, once  $\mathbf{p}$  is known by integration (backward in time) of the system described by Eq. (7), all the components of the gradient  $\nabla_{\boldsymbol{\alpha}} J$  needed for sensitivity analysis and nonlinear least squares estimation can be calculated.

Especially because of the terms  $[\partial M / \partial \mathbf{x}]^T$  and  $[\partial M / \partial \boldsymbol{\alpha}]^T$  in Eq. (7) and Eq. (8), for a given model the practical implementation of the adjoint state method can require substantial efforts. Different paths can be pursued depending if the operations are carried out on the continuous form of the direct model, on its discretized form or directly on the computer code implementing the composition of Eq. (1) and Eq. (2). From a numerical point of view, the best representation of the functional to be derived is the associated computer code. Tremendous advances have been made in algorithmic differentiation (Griewank, 2000) and consequently the code based approach is facilitated by the advent of powerful automatic differentiation (AD) engines (see <http://www.autodiff.org>). The derivatives computed by means of algorithmic differentiation are accurate to the machine precision. Considering the computer code implementing the direct model (model and objective functional) as a concatenated sequence of instructions, algorithmic differentiation is based on a rigorous application of the chain rule, line by line. The application of the chain rule from the inputs to the outputs of the function is denoted as the forward mode of AD (such as in Eqs. 6 and 5) whereas the reverse mode operates from the outputs to the inputs. For vector valued response functions, it can be shown that when the ratio between the dimension of the input space and the dimension of the output space is greater than one, the reverse mode is more efficient in computing the Jacobian. The reverse mode of AD is the discrete equivalent of the adjoint state method from optimal control theory and it is perfectly suited when the response is a scalar.

## HESSD

4, 363–405, 2007

### Adjoint sensitivity analysis and parameter estimation

W. Castaings et al.

Title Page

Abstract

Introduction

Conclusions

References

Tables

Figures

◀

▶

◀

▶

Back

Close

Full Screen / Esc

Printer-friendly Version

Interactive Discussion

EGU

### 3 Flash flood model

In order to illustrate the potential of variational methods for catchment scale hydrological modelling, an event-based distributed rainfall-runoff model is applied to a small watershed in the upper part of the Thoré watershed (Tarn department, South West of France).

#### 3.1 Model description

The underlying physics of MARINE flash flood model (Estupina-Borrell et al., 2006) is adapted to events for which infiltration excess dominates the generation of the flood. In the version used for this study, rainfall abstractions are evaluated using the Green Ampt infiltration model and the resulting surface runoff (hillslope flow) is transferred using the Kinematic wave approximation (KWA). The complex geometry of the watershed is described by a uniform grid in which each cell receives water from its upslope neighbors and discharge to a single downslope neighbor (steepest direction). For a one dimensional downslope flow of average velocity  $u$  and average depth  $h$ , the continuity equation can be expressed as:

$$\frac{\partial h}{\partial t} + \frac{\partial uh}{\partial x} = r - i \quad (9)$$

where  $r$  is the rainfall intensity and  $i$  the infiltration rate. Using the KWA approximation, which has shown the ability to represent channelized and sheet overland flow (Singh, 2001), the momentum conservation equation reduces to an equilibrium between the bed slope  $S_0$  and the friction slope  $S_f$ . The Manning equation (uniform flow on each grid cell) is used to relate the flow velocity and the flow depth:

$$u = \frac{R^{2/3} S_f^{1/2}}{n} \quad \text{with} \quad R = \frac{hw}{2h + w} \quad (10)$$

where  $R$  is the hydraulic radius,  $n$  the Manning roughness coefficient and  $w$  the elemental flow width. In this simplified version of the model, the flow width is constant

**HESSD**

4, 363–405, 2007

### Adjoint sensitivity analysis and parameter estimation

W. Castaings et al.

Title Page

Abstract

Introduction

Conclusions

References

Tables

Figures

◀

▶

◀

▶

Back

Close

Full Screen / Esc

Printer-friendly Version

Interactive Discussion

EGU

(rectangular section) and given the ratio between the width (grid resolution) and the flow depth, the hydraulic radius is approximated by the water depth (i.e  $R=h$ ). The resulting equation governing the overland flow is given by:

$$\frac{\partial h}{\partial t} + \frac{S_0^{1/2}}{n} \frac{\partial h^{5/3}}{\partial x} = r - i \quad (11)$$

5 In the right hand side of Eq. (11), which represents the excess rainfall, the infiltration rate  $i(t)$  is estimated using the Green and Ampt equation, a very classic simplified representation of the infiltration process. For an homogeneous soil column characterised by its hydraulic conductivity  $K$  and  $\psi$  the soil suction at the downward moving wetting front, the potential infiltration rate is given by

$$10 \quad i(t) = K \left( \frac{\psi \Delta \theta}{I(t)} + 1 \right) \quad \text{with} \quad \Delta \theta = \eta(1 - \theta) \quad (12)$$

where  $\theta$  is the initial soil moisture content,  $\eta$  the soil porosity and  $I(t)$  the cumulative infiltration at time  $t$ . After ponding (Mein and Larson, 1973), the cumulated infiltration at time  $t+\Delta t$  can be calculated by the following equation

$$I_{t+\Delta t} - I_t - \psi \Delta \theta \ln \left[ \frac{I_{t+\Delta t} + \psi \Delta \theta}{I_t + \psi \Delta \theta} \right] = K \Delta t \quad (13)$$

15 which is solved by the Newton's method.

### 3.2 Case study

20 The previously described model is applied to a very small catchment area (25 km<sup>2</sup>) (see Fig. 1) from the upper part of the Thoré basin which was affected by a catastrophic flood event in November 1999. Unfortunately the event was not gauged since all measuring devices were washed away by the flood. Therefore, a priori values (derived from published tables) for the parameters are used in the generation of a reference virtual hydrological reality. Although, different parametrizations will be used in this paper, for

## Adjoint sensitivity analysis and parameter estimation

W. Castaings et al.

Title Page

Abstract

Introduction

Conclusions

References

Tables

Figures

◀

▶

◀

▶

Back

Close

Full Screen / Esc

Printer-friendly Version

Interactive Discussion

the information of the reader typical uniform values are shown in Table 1. When rain-fall forcing is estimated from real radar data (from Météo France) the nominal values specified produce specific discharges typical for Mediterranean flash flood events.

## 4 Sensitivity analysis

Most contributions to sensitivity and uncertainty analysis in hydrology have been carried out in statistical framework. Since it is necessary to sample the control space in such analysis, the computational cost is always dependent on the number of variables considered (curse of dimensionality). However, depending on the purpose of the sensitivity analysis, it may not be necessary to average information over the entire bounded parameter space and local approaches around the behavioral nominal values may prove very informative.

In order to corroborate and improve our understanding of the way the different model parameters control the hydrological response, the tangent linear and adjoint models of MARINE were developed using the direct and reverse modes of the TAPENADE automatic differentiation engine (Hascoët and Pascual, 2004).

The nominal values for the parameters, the initial and boundary conditions define a trajectory in the model phase space. For a given trajectory we compute local sensitivity indices by means of derivative information. The outcome to be analysed is a gradient for a scalar response and the entire Jacobian matrix of the transformation for a vectorial response.

### 4.1 Numerical experiments with parametrization of reduced dimensionality

For the distributed modelling of catchment hydrology, parameters are discretized according to the spatial discretization of model state variables. However, even if different values can be assigned to every single element of the discretization using a priori information, some simplification of the structure for this high-dimensional space is manda-

## Adjoint sensitivity analysis and parameter estimation

W. Castaings et al.

Title Page

Abstract

Introduction

Conclusions

References

Tables

Figures

◀

▶

◀

▶

Back

Close

Full Screen / Esc

Printer-friendly Version

Interactive Discussion

tory to make the inverse problem tractable. While very sophisticated techniques have been developed in groundwater modelling for the identification of optimal parametrizations (Sun and Yeh, 1985; Ben Ameer et al., 2002; Tsai et al., 2003), zonation based on a priori information is the most commonly used strategy in distributed rainfall-runoff modelling. With a fixed pattern for the whole watershed (or a very limited number of zones), scalar multipliers are used for both sensitivity analysis and parameter estimation.

This classical reduction of the control space is adopted, a correction factor for the drainage network and another one for the hillslopes are specified. The relative importance of those input factors on two aspects of the hydrological response (flood volume and flood peak) is provided by Figs. 2 and 3. Due to the mathematical formulation of the infiltration model Eq. (12),  $\theta$ ,  $\psi$  and  $\eta$  have the same first order effect. It is important to note that all sensitivities are negative because increasing the nominal value for all the parameters reduces the magnitude of the response. The analysis of Fig. 2 confirms that the flood volume is mainly determined by the infiltration parameters on the hillslopes (hydraulic conductivity  $K$  and initial soil moisture  $\theta$ ). Additional experiments, which are not reported here show that the wetter the soil at the beginning of the event, the faster the decay of the infiltration rate to the hydraulic conductivity and therefore the greater the relative influence of  $K$  compared to the initial soil moisture  $\theta$ . The previously mentioned parameters have a significant influence on the flood peak but they are largely overtaken by the correction factor affecting the roughness in the drainage network (see Fig. 3). Due to the flow concentration, the roughness coefficient plays a more important role in partitioning infiltration and runoff in the drainage network.

If the quantification of the effect of parameter variations on the complete hydrograph is of interest, a vectorial response containing the temporal evolution (80 time steps) of the simulated discharge can be considered. Due to the ratio between input and output space dimensions (i.e. 6/80), the Jacobian matrix is computed using the multi-directional tangent mode of TAPENADE. Each column of the Jacobian matrix is the result for all the time steps composing the response of an infinitesimal perturbation on

Adjoint sensitivity  
analysis and  
parameter estimation

W. Castaings et al.

Title Page

Abstract

Introduction

Conclusions

References

Tables

Figures

◀

▶

◀

▶

Back

Close

Full Screen / Esc

Printer-friendly Version

Interactive Discussion

one of the input parameters. While one can propose a physical interpretation for the lines and/or columns of the Jacobian matrix, a very interesting view angle is provided by its singular value decomposition (SVD). The singular value decomposition of an  $m \times n$  matrix  $\mathbf{A}$  is a factorization of the form

$$\mathbf{A} = \mathbf{U}\mathbf{S}\mathbf{V}^T \quad (14)$$

where  $\mathbf{S}$  is a diagonal matrix containing the singular values of  $\mathbf{A}$  in the decreasing order while  $\mathbf{U}$  and  $\mathbf{V}$  are orthogonal matrices (respectively of dimension  $m \times m$  and  $n \times n$ ). The resulting  $\{\sigma_1, \sigma_2, \dots, \sigma_{\min(m,n)}\}$  is referred as the singular spectrum of  $\mathbf{A}$ . The columns of  $\mathbf{U} = \{\mathbf{u}_1, \mathbf{u}_2, \dots, \mathbf{u}_m\}$  and  $\mathbf{V} = \{\mathbf{v}_1, \mathbf{v}_2, \dots, \mathbf{v}_m\}$  are the left and right singular vectors in the input and output spaces of the transformation represented by  $\mathbf{A}$ . The magnitude of the singular values in  $\mathbf{S}$  represent the importance of the corresponding singular vectors in the columns of  $\mathbf{U}$  and  $\mathbf{V}$ . This factorization is widely used for the analysis of linear ill-posed problems (Hansen, 1998) and its potential extrapolation to nonlinear systems using the Jacobian, the adjoint or the Hessian or the model operator is spreading (Buizza and Palmer, 1995; Clément et al., 2004; Le Dimet et al., 2002; Li et al., 2005).

With the adopted parametrization of reduced dimensionality, the singular spectrum is given by Table 2 and the components of the first two singular vectors in the parameter space (right singular vectors) are shown in Fig. 4. The subscript “r” corresponds to the drainage network and the subscript “v” corresponds to the hillslopes. From Table 2 it can be seen that the decay of the singular values is very rapid. Most of the variability (more than 96%) is contained by the first two vectors and because they represent orthogonal directions in the parameter space their components exhibit a clear distinction between the production and transfert of runoff. Given the components of the first singular vector and the magnitude of the singular value associated, the domination of friction parameters, particularly the scaling factor affecting the roughness coefficient in the drainage network, is very clear. The analysis of the second singular vector components indicates a predominance of the hillslopes infiltration parameters and a potential

Title Page

Abstract

Introduction

Conclusions

References

Tables

Figures

◀

▶

◀

▶

Back

Close

Full Screen / Esc

Printer-friendly Version

Interactive Discussion

compensation with friction parameters. This is probably due to the fact that the increase in friction causes spreading of the flood hydrograph: discharge values diminish up to the flood peak and increase after.

Furthermore, using the adjoint state method (reverse mode of AD) the computational cost related to the evaluation of local sensitivities is not related to the dimension of the input space, therefore a similar analysis is proposed without any a priori reduction of the control space.

#### 4.2 Numerical experiments with fully distributed parameters

The use of sampling based sensitivity analysis methods is not tractable for distributed parameter systems without dimension reduction. Since this limitation does not apply to the local sensitivity analysis method adopted in this paper, we use in this paragraph the full potential of the adjoint method in order to analyse the influence on the hydrological response of the value specified for all the elements of the discretization. Considering the scalar responses analysed in the previous paragraph, a single integration of the adjoint model yields to sensitivity indices for all parameters.

For, the sensitivity of the flood volume to the hydraulic conductivity and the sensitivity of the flood peak to the roughness coefficient, the spatial variability of sensitivity indices is provided by Fig. 5. The darker the pixel, the more important is the sensitivity of the response to the parameter. As expected, sensitivities are more important around the drainage network for both parameters. There is no contradiction with the results obtained previously because since the hillslopes cover a larger surface, a scaling factor affecting this area be more influent than the one modifying the values in the drainage network on the overall runoff coefficient.

For the sensitivity of the maximum discharge to the roughness coefficient, two color scales were used due to positive and negatives sensitivities encountered over the surface of the watershed. In fact, depending on the location, increasing the roughness coefficient can have antagonist effets on the peak discharge. While all sensitivities have the expected sign along the main stream (i.e. negative), some positive sensitivities can

### Adjoint sensitivity analysis and parameter estimation

W. Castaings et al.

Title Page

Abstract

Introduction

Conclusions

References

Tables

Figures

◀

▶

◀

▶

Back

Close

Full Screen / Esc

Printer-friendly Version

Interactive Discussion

counterbalance the overall effect in some concomitant sub-bassins. Therefore, when applying scalar multipliers, compensation effects usually occur which are very difficult to identify without such analysis. For example, increasing the nominal by 10% for all roughness coefficients leads to  $-4.5\%$  change on the peak discharge. This variation is  $-5.9\%$  when only the cells showing a negative sensitivities are modified and  $+1.5\%$  when the same operation is carried out on the cells featuring positive sensitivities. If one is interested in ranking the different parameters, the norm (carefully choosen) of the normalized gradient can be derived and provide rigorous sensitivity indices.

When considering the vectorial response, due to the absence of parametrization for the 3 parameters the ratio between the dimensions of the input and output spaces is now very close to 100 (i.e.  $3 \times 2582 / 80$ ). The Jacobian matrix is computed line by line using multiple integrations of the adjoint model. The multi-directional reverse mode is not yet implemented in TAPENADE but it should lead to a significant reduction of the computational effort in the near future. In order to ensure the comprehensibility of the SVD results, the factorization is performed on sub-Jacobians. Each sub-matrix accounts for a single parameter but for all spatial locations. Even if the relative influence of the different parameters is not taken into account, at the parameter level the analysis contributes to an extensive understanding of the influence of the values specified over the entire watershed.

The singular spectrum for all the parameters and different forcing conditions (lumped and spatially variable) is given by Fig. 6. The analysis of this figure reveals that the decay of singular values is faster for the roughness coefficient compared to the infiltration parameters. It is also important to note that this gap is reduced when the spatial variability of rainfall is taken into account. In order words, we corroborate the natural reasoning stating that spatially variable precipitation emphasizes the influence of the spatial variability in friction parameters. It seems that more complex parameterizations are needed to capture the influence of heterogeneity for the infiltration parameters  $K$  and  $\theta$ . In order to quantify the number identifiable degrees of freedom in the parametrization more precisely, the relative importance of the parameters and

Adjoint sensitivity  
analysis and  
parameter estimation

W. Castaings et al.

Title Page

Abstract

Introduction

Conclusions

References

Tables

Figures

◀

▶

◀

▶

Back

Close

Full Screen / Esc

Printer-friendly Version

Interactive Discussion



the level of noise in the observations should be taken into account. However, using this approach it is possible to measure the effect of increasing the information content in observations (such as internal gauging stations or several flood events) on the identifiability of the parameters.

The visualization of singular vectors in the parameter space for  $n$  and  $K$  (Figs. 7 and Fig. 8) also provide an extensive insight into the model behavior. The presence of two concomitant sub-basins driving the variability of the simulated discharges at the outlet of the watershed is clearly characterized. For the roughness coefficient  $n$  and the hydraulic conductivity  $K$ , the first singular vector is dominated by the main stream and its reception basin (Figs. 7a and 8a). For the hydraulic conductivity, the sensitivity magnitude is decreasing with the distance from the principal convergence zone in the river network. In an analogous manner, positive components are encountered mainly on the other sub-basin for the second singular vectors (see Figs. 7b and 8b). For the roughness coefficient, only some elements, situated very close from the outlet are part of the main sub-basin whereas some elements situated very far from the outlet also do for the hydraulic conductivity. When analyzed in the observation space, the potential interactions between the two sub-basins is outlined. For the roughness coefficient, the components of  $u_1$  and  $u_2$  (singular vectors in the observation space) are plotted together with the outlet discharge (see Fig. 9). Analyzing this figure, it is evidenced that the slight disruptions of the hydrograph during both the rising limb and the recession are not due to the temporal variability of the rainfall but to the interaction of the flood waves traveling in the sub-basins. As expected, there is a perfect correspondence between the singular vectors of the input and output spaces. Due to the fact that the smaller sub-basin (holding  $v_2$ ) is closer to the outlet of the catchment, the resulting smaller concentration time leads to a quicker response at the outlet perfectly characterized by  $u_2$ .

It was shown in this section that the derivatives obtained with algorithmic differentiation provide a valuable introspection into the relation between the model parameters and the simulated hydrological response. Furthermore, the availability of accurate

Adjoint sensitivity  
analysis and  
parameter estimation

W. Castaings et al.

Title Page	
Abstract	Introduction
Conclusions	References
Tables	Figures
◀	▶
◀	▶
Back	Close
Full Screen / Esc	
Printer-friendly Version	
Interactive Discussion	

adjoint-based sensitivities enable the use of efficient gradient based optimization techniques.

## 5 Parameter estimation

Whatever the complexity of the mathematical representation for hydrological systems, parameters are not directly measurable entities. Although the development of strategies for the a priori estimation of model parameters have received growing attention, calibration is still an important step in the modelling process. Mostly due to of the numerical artefacts produced by the mathematical, numerical and algorithmic representation of hydrological processes in lumped conceptual models, the classical and very efficient gradient-based parameter estimation methods have been abandoned. With the evolution of the underlying philosophy and perceived objectives of model calibration, together with the rapid increase of computational power, the computer intensive non-smooth global search strategies have become the forefront in hydrology.

The calibration of spatially distributed models using very scarce observations of the hydrological response leads to ill-posed inverse problems if no regularization strategy is adopted. In meteorological or oceanographic data assimilation (state updating), an additional term (Tikhonov regularization) is added to the cost function for the penalization of control variables iterates which are too far from the a priori value (result of a model integration) for the state of the atmosphere. Because it is acknowledged as a fact that behavioral parameters may lie in very different regions of the parameter space, global optimization methods are used for distributed models with very parsimonious parametrizations in terms of reduced flexibility in the spatial variability (scalar multipliers). However, when a priori values for the parameters are relevant, it was shown local search methods may offer advantages over global techniques (Kuzmin et al., 2004<sup>1</sup>).

<sup>1</sup>Kuzmin, V., Seo, D., and Koren, V.: Fast and efficient optimization of hydrologic model parameters using a priori estimates and stepwise line search, J. Hydrol., submitted, 2007.

### Adjoint sensitivity analysis and parameter estimation

W. Castaings et al.

Title Page

Abstract

Introduction

Conclusions

References

Tables

Figures

◀

▶

◀

▶

Back

Close

Full Screen / Esc

Printer-friendly Version

Interactive Discussion

Concerning the widely discredited continuity of the objective function derivatives, it has been shown that for some cases many problems can be avoided using appropriate and robust model implementation (Kavetski et al., 2006b,c). The formulation of hydrological processes and the computational approach usually adopted for distributed models tend to produce smoother response surfaces. It can be very difficult to avoid the presence of internal model thresholds, especially when they are really due to physical features of the system. In the algorithmic representation of computer models, internal thresholds transform into conditional statements determining the control flow of the computer program. Therefore, the derivatives computed with algorithmic differentiation are valid only in a certain domain around the nominal values for the input variables (Arya-Polo, 2006). The author even implemented the evaluation of this safe interval and the facility is now proposed by the forward mode of TAPENADE. However, it is also important to note that the objective functions used for the calibration of model parameters involve an integration of the residuals over time for integrated hydrological responses (spatio-temporal smoothing). Thereby, internal thresholds, especially when occurring at the grid element level, do not necessarily produce discontinuous derivatives for the objective function. Even if they do, in the context of variational data assimilation Zhang et al. (2000) have shown that differentiable minimization algorithms such as quasi-Newton (BFGS) may still work well for minimizing non-smooth cost functions. The use of non-differentiable optimization algorithms (such as Bundle methods) employing subgradients can be considered if difficulties are encountered. In this paper, a bound constrained (inequality constraints) quasi-Newton (BFGS) optimization algorithm (Lemarchal and Panier, 2000) from the MODULOPT library was used. Using the adjoint sensitivities, the algorithm estimates the active set by performing a Wolfe line search along the gradient projection path.

For the evaluation of the approach, synthetic observations are generated with the reduced parametrization used in the previous section with  $k_r=4 \text{ mmh}^{-1}$ ,  $k_v=2 \text{ mmh}^{-1}$ ,  $n_r=0.05$ ,  $n_v=0.08$  and  $\theta=0.5$  (uniform over the watershed). The Nash criterion is used to measure the misfit between model simulations and the synthetic observations. As

## Adjoint sensitivity analysis and parameter estimation

W. Castaings et al.

Title Page

Abstract

Introduction

Conclusions

References

Tables

Figures

◀

▶

◀

▶

Back

Close

Full Screen / Esc

Printer-friendly Version

Interactive Discussion

shown in Fig. 10, all control variables are retrieved independently from the initialization point. The relative importance of the parameters inferred from SA results is retrieved: the more sensitive is the response to a parameter, the greater is the identifiability of this parameter and therefore the faster the iterates convergence to the reference value.

Furthermore, the sensitivity analysis results are usually used to assess but also enhance the identifiability of model parameters. Since the analysis carried out in the previous section exhibit the spatial variability of the hydrological response sensitivity to the model parameters, rather than simply guiding the choice of calibration parameters (factor fixing), SA might provide guidance for a reasonable increase of the parametrization complexity. In fact, the sub-space from the original parameter space driving the simulated discharges is spanned by the first vectors (right singular vectors) from the SVD of the Jacobian matrix. Given that a small number of singular values are dominant, as illustrated in Fig. 6, most of the variability can be captured with very few orthogonal directions in the parameter space. Even if linearization is a local concept, the right singular vectors are mainly determined by the topography of the watershed and we do not expect important modifications when the Jacobian is evaluated for different trajectories in the model phase space. In order to compute the vectors describing the relevant sub-space for data fitting, the factorization was performed for the Jacobian calculated with spatially uniform rainfall forcing and model parameters (reference values of Table 1).

Compared to the parameter estimation experiments carried out in the previous section, a more complex virtual hydrological reality was used for the generation of the synthetic discharge series. Deterministic spatial distributions were imposed for the different model parameters: the hydraulic conductivity  $K$  is decreasing linearly with the ground elevation; the roughness coefficient  $n$  is derived using a land-use classification from SPOT satellite data for the hillslopes and uniform in the drainage network; and lastly the initial soil moisture  $\theta$  is constant over the watershed. Then, the calibration problem is tackled using parametrizations of increasing dimensionality. The number of degrees of freedom for each parameter, the Nash performance of the identified parameter set and the inverse of the condition number are given in Table 3.

Adjoint sensitivity  
analysis and  
parameter estimation

W. Castaings et al.

Title Page

Abstract

Introduction

Conclusions

References

Tables

Figures

◀

▶

◀

▶

Back

Close

Full Screen / Esc

Printer-friendly Version

Interactive Discussion

Starting with the very simple parameterizations  $P_1$  and  $P_2$ , the number of degrees of freedom is increased gradually using the singular vectors driving  $X\%$  of the variability for parameters  $K$  and  $n$  (labelled  $P_{SVX}$  in the table). The condition number was calculated with  $H$  the quasi-hessian after the last BFGS update (i.e. at the optimum). We recall that the larger the ratio  $1/\kappa(H)$ , the better is the conditioning of the optimization problem. From the results obtained in Table 3, it seems that using this description of the parameter space the number of control variables can be increased without altering conditioning of the optimization problem. The previous statement is valid as long as the vectors describing the kernel in the parameter space (the specified degree of freedom which do not significantly alter the hydrological response) are not introduced in the parametrization. The results obtained with  $P_{SV90}$  show that even with noise-free observations the use of those directions for the description of the affordable sub-space lead to instability in the inverse problem.

However, it is interesting to note that with respectively 7 and 10 degrees of freedom (i.e.  $P_{SV70}$  and  $P_{SV80}$ ), the conditioning it is even better than the one obtained with parametrization  $P_2$ . As emphasized by Tonkin and Doherty (2005), the subspace determined from the truncated singular value decomposition of the Jacobian (TSVD) is determined from the information content of the observations whereas the subspace constructed from a prior parsimony strategy is not. The previously cited authors used TSVD of a finite difference Jacobian matrix intervening in the linearized equations of the Levenberg-Marquardt method for the regularization of the inverse problem. In order to prevent over-fitting and combine the advantages of TSVD and Tikhonov regularizations an hybrid regularization methodology is proposed and embedded in the last version of the PEST package (Doherty, 2004).

While the truncation level of the SVD is the only mechanism for preventing over-fitting, the quadratic penalization term of the Tikhonov approach is also a way to insert a priori information on the parameters. Even if physically acceptable bounds were assigned for each parameter (a singular value across the watershed surface), the improvement of performances in terms of Nash coefficient do not necessarily come with

Adjoint sensitivity  
analysis and  
parameter estimation

W. Castaings et al.

Title Page

Abstract

Introduction

Conclusions

References

Tables

Figures

◀

▶

◀

▶

Back

Close

Full Screen / Esc

Printer-friendly Version

Interactive Discussion

behavioral parameters (see Table 4).

For the ideal situation where the estimated parameters can be compared to the virtual hydrological reality, the Nash  $N_x$  and the coefficient of determination  $R_{2x}$  (estimated versus reference values) were computed for the different parametrizations. Except for the parameter  $\theta$  (poorly constrained by the observations), which was used to compensate for the lack of degrees of freedom for overly simple parametrizations,  $P_2$  seems superior to other strategies. However, the compensation effects are reduced with the increasing complexity for the other parameters and this lead to a better identification of  $\theta$ .

Using the combination with Tikhonov regularization, one could introduce additional a priori information with a penalization term enforcing the correlation with a reasonable spatial distribution. The investigation of an the hybrid strategy similar to the one proposed by Tonkin and Doherty (2005) is beyond the scope of this paper but special care should be taken for the specification of the regularization parameter. The choice of the mathematical formulation for this regularization term should maintain a good compromise between flexibility and stability.

## 6 Conclusions and discussion

Recent advances in computing power and observation capabilities enable the representation of the spatial variability characterizing the atmospheric forcing and the catchment attributes. Although the choice of the necessary and affordable model complexity providing accurate and reliable predictions for the hydrological response of a watershed to rainfall forcing is still an open problem, models are gradually evolving from simplified bucket models to more complex structures. Even if they can be limited for real time flood forecasting distributed models are valuable tools for understanding hydrological processes. However, the analysis and control of those complex systems is very challenging and all aspects cannot be addressed using the paradigm inherited from lumped hydrological models (low dimensionality, low computational cost, no sizable constraints

### Adjoint sensitivity analysis and parameter estimation

W. Castaings et al.

Title Page

Abstract

Introduction

Conclusions

References

Tables

Figures

◀

▶

◀

▶

Back

Close

Full Screen / Esc

Printer-friendly Version

Interactive Discussion

on parameter values). For the moment, little regard was paid to the potential contribution of deterministic methods that have proven successful for other disciplines facing the same challenges. As [Margulis and Entekhabi \(2001\)](#) emphasized for land surface hydrology applications, many of the issues that led meteorologists and oceanographers to use adjoint techniques are now at the forefront in hydrology.

Using a very simple and common model structure, an ideal test case configuration, it has been shown that the potential of variational methods for catchment scale hydrology should be considered. Although for this particular application most of the outcomes reduce to evidence retrieval, the adopted techniques should be further exploited. The approach is not model-free but its practical implementation is largely facilitated by the advent of very efficient automatic differentiation tools such as the one used for this study. It is important to emphasize that a single integration of the adjoint code, encompassing the forward integration of the direct model and the backward integration of the adjoint model, yields all spatial and even temporal sensitivities ([Hall and Cacuci, 1983](#)) for the nominal values prescribed for the control variables. The key advantage of this technique is that the computational cost is independent from the dimension of the control space. Given the abundance of extracted information, adjoint sensitivity analysis is profitable step to be carried out before the assimilation of observations for parameter and state estimation. The results obtained in this paper show that the influence of each input factor in the high-dimensional parameter space can be investigated (spatial SA). In comparison, similar calculations using sampling based approaches would imply a prohibitive computational cost. When the entire flood hydrograph is analyzed, the interpretation of the singular vectors of the Jacobian in the parameter space and in the observation space brings out very relevant information. The parameters really influencing the hydrological response response (spatial location) and the measurements really constraining the parameters (temporal location) are identified. Although differential methods are intrinsically local, they are perfectly suited when the analysis of the system in behavioral regions of the parameter space is of interest. The scope of the analysis can be extended by varying event-based input factors such as antecedent soil

**Adjoint sensitivity  
analysis and  
parameter estimation**

W. Castaings et al.

Title Page	
Abstract	Introduction
Conclusions	References
Tables	Figures
◀	▶
◀	▶
Back	Close
Full Screen / Esc	
Printer-friendly Version	
Interactive Discussion	



moisture conditions and rainfall forcing (multi-local sensitivity analysis).

The availability of distributed physically based models does not, and will not in the near future, overcome the need to calibrate at least part of the model parameters. When applying parsimonious parametrizations, subgradients computed with the reverse mode of algorithmic differentiation (adjoint method) were found exceedingly efficient in driving bound constrained quasi-newton optimization algorithms to the reference values used to generate synthetic observations. If no prior strategy is adopted for the parametrization, the calibration problem is ill-posed. Exploiting the results obtained during the sensitivity analysis, prospects are formulated and illustrated for the regularization of the inverse problem using the truncated singular value decomposition of the Jacobian matrix. By using a subspace from the original control space for the calibration of model parameters, the approach is very similar to the reduced-order strategies proposed in data assimilation (Blayo et al., 1998). In the variational data assimilation framework, but also in the hybrid approach proposed by Tonkin and Doherty (2005), this strategy is combined with the classical Tikhonov regularization to prevent overfitting and enforce the convexity of the cost function. In fact, in order to limit the natural increase of parameter uncertainty resulting from an increasing parametrization complexity, a priori information on the spatial organization and the nominal values for the parameters could be used.

The authors acknowledge the fact that nominal values for the parameters are inferred from indirect and uncertain observations of the hydrological response, with imperfect models driven by corrupted rainfall forcing and using performance measures based on integrated catchment or sub-catchment response. The separation of the different sources of uncertainty is very challenging because of complex compensation effects. Following the development of mathematical formulations for meaningful error models, variational methods can provide an invaluable insight into the analysis and control of the uncertain system dynamics (Vidard et al., 2000; Vidard et al., 2004). Alternatively, for the integration of gradient-based methods to a Bayesian probabilistic framework, the reader is referred to the very promising contributions of Kavetski et al. (2006a) and

Adjoint sensitivity  
analysis and  
parameter estimation

W. Castaings et al.

Title Page

Abstract

Introduction

Conclusions

References

Tables

Figures

◀

▶

◀

▶

Back

Close

Full Screen / Esc

Printer-friendly Version

Interactive Discussion



*Acknowledgements.* This work was supported by a bi-annual research contract between the Midi-Pyrénées région and the French government funded and managed by the French National Space Agency (CNES). The authors gratefully acknowledge the support of French National  
5 Institute for Research in Computer Science and Control (INRIA) and Toulouse Institute of Fluid Mechanics (IMFT).

References

Araya-Polo, M.: Approches to assess validity of derivatives and to improve efficiency in automatic differentiation of programs, Ph.D. thesis, Université de Nice Sophia Antipolis, 2006.  
10 380

Bastidas, L. A., Gupta, H., Sorooshian, S., Shuttleworth, W., and Yang, Z.: Sensitivity Analysis of a Land Surface Scheme using Multi-Criteria Methods, J. Geophys. Res., 104, 19481–19490, 1999. 364, 365

Belanger, E. and Vincent, A.: Data assimilation (4D-VAR) to forecast flood in shallow-waters with sediment erosion, J. Hydrol., 300, 114–125, 2005. 367

15 Ben Ameer, H., Chavent, G., and Jaffré, J.: Refinement and coarsening indicators for adaptive parametrization: application to the estimation of hydraulic transmissivities, Inverse Problems, 18, 775–794, 2002. 374

Bennett, A.: Inverse Methods in Physical Oceanography, Cambridge Monographs on Mechanics and Applied Mathematics, Cambridge University Press, 1992. 366

20 Beven, K. and Binley, A.: The future of distributed models : model calibration and predictive uncertainty, Hydrol. Processes, 279–298, 1992. 364, 365

Blayo, E., Blum, J., and Verron, J.: Assimilation variationnelle de données en océanographie et réduction de la dimension de l'espace de contrôle, in: Equations aux Dérivées Partielles et Applications (articles dédiés Jacques-Louis Lions), 199–219, Gauthier-Villars, 1998. 385

25 Buizza, R. and Palmer, T. N.: The singular vector structure of the global atmospheric global circulation, J. Atmos. Sci., 52, 1434–1456, 1995. 375

Cacuci, D.: Sensitivity theory for nonlinear systems. I. Nonlinear functional analysis approach, J. Mathematical Phys., 22(12), 2794–2802, 1981. 369

Adjoint sensitivity analysis and parameter estimation

W. Castaings et al.

Title Page	
Abstract	Introduction
Conclusions	References
Tables	Figures
◀	▶
◀	▶
Back	Close
Full Screen / Esc	
Printer-friendly Version	
Interactive Discussion	

- Callies, U., Rhodin, A., and Eppel, D. P.: A case study on variational soil moisture analysis from atmospheric observations, *J. Hydrol.*, 212–213, 95–108, 1998. [367](#)
- Chavent, G.: Identification of Parameters in Distributed Systems, chap. Identification of functional parameter in partial differential equations, Heinemann, 1974. [367](#)
- 5 Christiaens, K. and Feyen, J.: Use of sensitivity and uncertainty measures in distributed hydrological modeling with an application to the MIKE SHE model, *Water Resour. Res.*, 38(9), 1169, doi:10.1029/2001WR000478, 2002. [365](#)
- Clément, F., Khvoenkova, N., Cartalade, A., and Montarnal, P.: Analyse de sensibilité et estimation de paramètres de transport pour une équation de diffusion, approche par adjoint, Tech. Rep. RR-5132, INRIA-Rocquencourt, Projet ESTIME, 2004. [375](#)
- 10 Doherty, J.: PEST: Model-Independent Parameter Estimation, Watermark Numerical Computing, 5th edition edn., 2004. [382](#)
- Duan, Q., Sorooshian, S., and Gupta, V.: Effective and Efficient Global Optimisation for Conceptual Rainfall-Runoff Models, *Water Resour. Res.*, 28, 1015–1031, 1992. [364](#)
- 15 Estupina-Borrell, V., Dartus, D., and Ababou, R.: Flash flood modeling with the MARINE hydrological distributed model, *Hydrol. Earth Syst. Sci. Discuss.*, 3, 3397–3438, 2006, <http://www.hydrol-earth-syst-sci-discuss.net/3/3397/2006/>. [371](#)
- Francos, A., Elorza, F. J., Bouraoui, F., Bidoglio, G., and Galbiati, L.: Sensitivity analysis of distributed environmental simulation models: understanding the model behaviour in hydrological studies at the catchment scale, *Reliability Eng. Syst. Safety*, 79, 205–218, 2003. [365](#)
- 20 Ghil, M. and Malanotte-Rizzoli, P.: Data assimilation in meteorology and oceanography, *Adv. Geophys.*, 33, 141–226, 1991. [366](#)
- Griewank, A.: Evaluating Derivatives: Principles and Techniques of Algorithmic Differentiation, no. 19 in *Frontiers in Appl. Math.*, SIAM, Philadelphia, PA, 2000. [370](#)
- 25 Hall, C. and Cacuci, D.: Physical interpretation of the adjoint functions for sensitivity analysis of atmospheric models, *J. Atmos. Sci.*, 40, 2537–2546, 1983. [366](#), [384](#)
- Hall, J., Tarantola, S., Bates, P., and Horritt, M.: Distributed Sensitivity Analysis of Flood Inundation Model Calibration, *J. Hydraulic Eng.*, 131, 117–126, 2005. [366](#)
- Hansen, P.: Rank-Deficient and Discrete Ill-Posed Problems. Numerical Aspects of Linear Inversion, SIAM, Philadelphia, 1998. [375](#)
- 30 Hascoët, L. and Pascual, V.: TAPENADE 2.1 user's guide, Tech. Rep. RT-0300, Institut National de Recherche en Informatique et en Automatique (INRIA), 2004. [373](#)
- Honnorat, M., Monnier, J., Lai, X., and Le dimet, F.-X.: Variational data assimilation for 2D

## Adjoint sensitivity analysis and parameter estimation

W. Castaings et al.

Title Page

Abstract

Introduction

Conclusions

References

Tables

Figures

◀

▶

◀

▶

Back

Close

Full Screen / Esc

Printer-friendly Version

Interactive Discussion

- fluvial hydraulics simulation, in: CMWR XVI-Computational Methods for Water Ressources. Copenhagen, june 2006, 2006. [367](#)
- Hornberger, G. and Spear, R.: An approach to the preliminary analysis of environmental systems, J. Environ. Manage., 12, 7–18, 1981. [365](#)
- 5 Kavetski, D., Kuczera, G., and Franks, S.: Bayesian analysis of input uncertainty in hydrological modelling: I. Theory, Water Resour. Res., 42, 2006a. [385](#)
- Kavetski, D., Kuczera, G., and Franks, S. W.: Calibration of conceptual hydrological models revisited: 1. Overcoming numerical artifacts, J. Hydrol., 320, 173–186, 2006b. [380](#)
- Kavetski, D., Kuczera, G., and Franks, S. W.: Calibration of conceptual hydrological models  
10 revisited: 2. Improving optimisation and analysis, J. Hydrol., 320, 187–201, 2006c. [380](#)
- Kuczera, G. and Parent, E.: Monte Carlo assessment of parameter uncertainty in conceptual catchment models: the Metropolis algorithm, J. Hydrol., 211, 69–85, 1998. [364](#)
- Kuczera, G., Kavetski, D., Franks, S., and Thyer, M.: Towards a Bayesian total error analysis of conceptual rainfall-runoff models: Characterising model error using storm-dependent  
15 parameters, J. Hydrol., 331, 161–177, 2006. [386](#)
- Le Dimet, F.-X. and Talagrand, O.: Variational algorithms for analysis and assimilation of meteorological observations, Tellus, 38A, 97–110, 1986. [366](#)
- Le Dimet, F.-X., Navon, I. M., and Daescu, D. N.: Second-order information in data assimilation, Monthly Weather Rev., 130, 629–648, 2002. [375](#)
- 20 Lemarchal, C. and Panier, E.: Les modules M2QN1 et MQHESS, 2000. [380](#)
- Li, Z., Navon, I., and Hussaini, M. Y.: Analysis of the singular vectors of the full-physics Florida State University Global Spectral Model, Tellus, 57A, 2005. [375](#)
- Lions, J.: Optimal control of systems governed by partial differential equations, Springer-Verlag, 1968. [367](#), [369](#)
- 25 Margulis, S. A. and Entekhabi, D.: Feedback between the Land Surface Energy Balance and Atmospheric Boundary Layer Diagnosed through a Model and Its Adjoint, J. Hydrometeorol., 2, 599–620, 2001. [367](#), [384](#)
- Mazauric, C.: Assimilation de donnees pour les modes d'hydraulique fluviale. Estimation de parametres, analyse de sensibilit et d'composition de domaine., Ph.D. thesis, Universit Joseph Fourier, (in french), 2003. [367](#)
- 30 Mein, R. and Larson, C.: Modeling infiltration during a steady rain, Water Resour. Res., 9, 384–394, 1973. [372](#)
- Muleta, M. and Nicklow, J.: Sensitivity and uncertainty analysis coupled with automatic calibra-

## HESSD

4, 363–405, 2007

### Adjoint sensitivity analysis and parameter estimation

W. Castaings et al.

Title Page

Abstract

Introduction

Conclusions

References

Tables

Figures

◀

▶

◀

▶

Back

Close

Full Screen / Esc

Printer-friendly Version

Interactive Discussion

EGU

- tion for a distributed watershed model, J. Hydrol., 306, 127–145, 2004. [365](#)
- Navon, I.: Practical and Theoretical Aspect of Adjoint Parameter Estimation and Identifiability in Meteorology and Oceanography, Dyn. Atmos. Oceans, 27, 55–79, 1998. [366](#)
- Piasecki, M. and Katopodes, N.: Control of Contaminant Releases in Rivers and Estuaries. Part I: Adjoint Sensitivity Analysis, J. Hydraulic Eng., ASCE, 123, 486–492, 1997. [367](#)
- Ratto, M., Tarantola, S., and Saltelli, A.: Sensitivity analysis in model calibration: GSA-GLUE approach, Computer Physics Communications, 136, 212–224, 2001. [365](#)
- Ratto, M., Young, P. C., Romanowicz, R., Pappenberge, F., Saltelli, A., and Pagano, A.: Uncertainty, sensitivity analysis and the role of data based mechanistic modeling in hydrology, Hydrol. Earth Syst. Sci. Discuss., 3, 3099–3146, 2006, <http://www.hydrol-earth-syst-sci-discuss.net/3/3099/2006/>. [365](#)
- Reichle, R.: Variational Assimilation of Remote Sensing Data for Land Surface Hydrologic Applications, Ph.D. thesis, Massachusetts Institute of Technology, 2000. [367](#)
- Saltelli, A., Chan, K., and Scott, E.: Sensitivity analysis, Wiley series in probability and statistics, Wiley, 2000. [365](#)
- Seo, D., Koren, V., and Cajina, N.: Real-Time Variational Assimilation of Hydrologic and Hydrometeorological Data into Operational Hydrologic Forecasting, J. Hydrometeorol., 4, 627–641, 2003a. [367](#)
- Seo, D., Koren, V., and Cajina, N.: Real-time assimilation of radar-based precipitation data and streamflow observations into a distributed hydrologic model, Proceedings of Symposium HS03 held during IUGG2003 at Sapporo, IAHS Publ, 282, 138–142, 2003b. [367](#)
- Seo, D., Koren, V., and Reed, S.: Improving a priori estimates of hydraulic parameters in a distributed routing model via variational assimilation of long-term streamflow data, Proceedings of Symposium HS03 held during IUGG2003 at Sapporo, IAHS Publ, 282, 109–113, 2003c. [367](#)
- Sieber, A. and Uhlenbrook, S.: Sensitivity analyses of a distributed catchment model to verify the model structure, J. Hydrol., 310, 216–235, 2005. [365](#)
- Singh, V.: Kinematic wave in water resources: a historical perspective, Hydrol. Processes, 15, 671–706, 2001. [371](#)
- Sun, N.-Z. and Yeh, W.-G.: Identification of parameter Structure in Groundwater Inverse Problems, Water Resour. Res., 21, 869–883, 1985. [374](#)
- Sun, N.-Z. and Yeh, W.-G.: Coupled inverse problems in groundwater modeling 1. Sensitivity and parameter identification, Water Resour. Res., 26, 2507–2525, 1990. [367](#)

## HESSD

4, 363–405, 2007

### Adjoint sensitivity analysis and parameter estimation

W. Castaings et al.

Title Page

Abstract

Introduction

Conclusions

References

Tables

Figures

◀

▶

◀

▶

Back

Close

Full Screen / Esc

Printer-friendly Version

Interactive Discussion

EGU

- Tang, Y., Reed, P., Wagener, T., and Van Werkhoven, K.: Comparing sensitivity analysis methods to advance lumped watershed model identification and evaluation, *Hydrol. Earth Syst. Sci.*, 11, 793–817, 2007, <http://www.hydrol-earth-syst-sci.net/11/793/2007/>. 365
- 5 Tonkin, M. and Doherty, J.: A hybrid regularized inversion methodology for highly parametrized environmental models, *Water Resour. Res.*, 41, 2005. 382, 383, 385
- Tsai, F.-C., Sun, N.-Z., and Yeh, W.-G.: Global-local optimization for parameter structure identification in three-dimensional groundwater modeling, *Water Resour. Res.*, 39, 1043, doi:10.1029/2001WR001135, 2003. 374
- 10 van Griensven, A., Meixner, T., Grunwald, S., Bishop, T., Diluzio, M., and Srinivasan, R.: A global sensitivity analysis tool for the parameters of multi-variable catchment models, *J. Hydrol.*, 324, 10–23, 2006. 365
- Vidard, P. A., Blayo, E., Le Dimet, F.-X., and Piacentini, A.: 4D variational data analysis with imperfect model, *Flow Turbulence and Combustion*, 65, 489–504, 2000. 385
- 15 Vidard, P. A., Piacentini, A., and Le Dimet, F.-X.: Variational data analysis with control of the forecast bias, *Tellus*, 56 A, 177–188, 2004. 385
- Vrugt, J. A., Bouten, W., Gupta, H. V., and Sorooshian, S.: Toward improved identifiability of hydrologic model parameters: The information content of experimental data, *Water Resour. Res.*, 38, 1312, doi:10.1029/2001WR001118, 2002. 365
- 20 Vrugt, J. A., Gupta, H. V., Bastidas, L. A., Bouten, W., and Sorooshian, S.: Effective and efficient algorithm for multiobjective optimization of hydrologic models, *Water Resour. Res.*, 39, 1214, doi:10.1029/2002WR001746, 2003a. 364
- Vrugt, J. A., Gupta, H. V., Bouten, W., and Sorooshian, S.: A Shuffled Complex Evolution Metropolis algorithm for optimization and uncertainty assessment of hydrologic model parameters, *Water Resour. Res.*, 39, 1201, doi:10.1029/2002WR001642, 2003b. 364
- 25 Wagener, T., McIntyre, N., Lees, M. J., Wheater, H. S., and Gupta, H. V.: Towards reduced uncertainty in conceptual rainfall-runoff modelling: dynamic identifiability analysis, *Hydrol. Processes*, 17, 455–476, 2003. 365
- White, L., Vieux, B., Armand, D., and Le Dimet, F.-X.: Estimation of optimal parameters for a surface hydrology model, *Adv. Water Resour.*, 26(3), 337–348, 2003. 367
- Yapo, P., Gupta, H., and Sorooshian, S.: Multi-objective global optimization for hydrologic models, *J. Hydrol.*, 204, 83–97, 1997. 364
- Yatheendradas, S., Wagener, T., Gupta, H., Unkrich, C., Schaffner, M., and Goodrich, D.:

## HESSD

4, 363–405, 2007

### Adjoint sensitivity analysis and parameter estimation

W. Castaings et al.

Title Page

Abstract

Introduction

Conclusions

References

Tables

Figures

◀

▶

◀

▶

Back

Close

Full Screen / Esc

Printer-friendly Version

Interactive Discussion

EGU

Toward Improved Calibration of a Semi-arid Distributed Flash-Flood Model: A Hierarchical Sensitivity Scheme for Model Evaluation, AGU Fall Meeting Abstracts, pp. A485+, 2005. [365](#), [366](#)

- 5 Zhang, S., Zou, X. and Ahlquist, J., Navon, I., and Sela, J.: Use of Differentiable and Non-Differentiable Optimization Algorithms for Variational Data Assimilation with Discontinuous Cost Functions, Monthly Weather Rev., 128, 4031–4044, 2000. [380](#)

**HESSD**

4, 363–405, 2007

---

**Adjoint sensitivity  
analysis and  
parameter estimation**

W. Castaings et al.

---

Title Page

Abstract

Introduction

Conclusions

References

Tables

Figures

◀

▶

◀

▶

Back

Close

Full Screen / Esc

Printer-friendly Version

Interactive Discussion

EGU

## Adjoint sensitivity analysis and parameter estimation

W. Castaings et al.

**Table 1.** Uniform values for model parameters.

Parameter	Name	Ref. value
Hydraulic conductivity (mm/h)	$K$	3.
Porosity	$\eta$	0.398
Suction (mm)	$\psi$	218.5
Initial soil moisture	$\theta$	0.5
Manning roughness coefficient	$n$	0.065

Title Page

Abstract

Introduction

Conclusions

References

Tables

Figures

◀

▶

◀

▶

Back

Close

Full Screen / Esc

Printer-friendly Version

Interactive Discussion

## Adjoint sensitivity analysis and parameter estimation

W. Castaings et al.

**Table 2.** Singular values of the Jacobian matrix.

sing. values	% of variability
9.07	84.83
1.30	12.20
0.24	2.25
0.04	0.42
0.02	0.28
0.001	0.01

Title Page

Abstract

Introduction

Conclusions

References

Tables

Figures

◀

▶

◀

▶

Back

Close

Full Screen / Esc

Printer-friendly Version

Interactive Discussion



**Adjoint sensitivity  
analysis and  
parameter estimation**

W. Castaings et al.

**Table 3.** Complexity, Nash efficiency and conditioning for the different parameterizations.

	$n_K$	$n_n$	$n_\theta$	Nash	$1/\kappa(H)$
$P_1$	1	1	1	0.908	0.965E-08
$P_2$	2	2	1	0.938	0.217E-11
$P_{SV70}$	4	2	1	0.968	0.889E-08
$P_{SV80}$	6	3	1	0.978	0.947E-08
$P_{SV90}$	9	5	1	0.986	0.242E-16

Title Page

Abstract

Introduction

Conclusions

References

Tables

Figures

◀

▶

◀

▶

Back

Close

Full Screen / Esc

Printer-friendly Version

Interactive Discussion

## Adjoint sensitivity analysis and parameter estimation

W. Castaings et al.

**Table 4.** Error statistics for the estimated parameters.

	$N_K$	$R2_K$	$N_n$	$R2_n$	$N_\theta$
$P_1$	0.596	0.743	0.686	0.945	−0.939
$P_2$	0.635	0.745	0.981	0.986	−0.635
$P_{SV70}$	0.510	0.729	0.797	0.952	0.651
$P_{SV80}$	0.445	0.565	0.793	0.936	0.736
$P_{SV90}$	−0.320	0.428	0.719	0.816	0.99

Title Page

Abstract

Introduction

Conclusions

References

Tables

Figures

◀

▶

◀

▶

Back

Close

Full Screen / Esc

Printer-friendly Version

Interactive Discussion

## Adjoint sensitivity analysis and parameter estimation

W. Castaings et al.



**Fig. 1.** Catchment topography.

Title Page

Abstract

Introduction

Conclusions

References

Tables

Figures

◀

▶

◀

▶

Back

Close

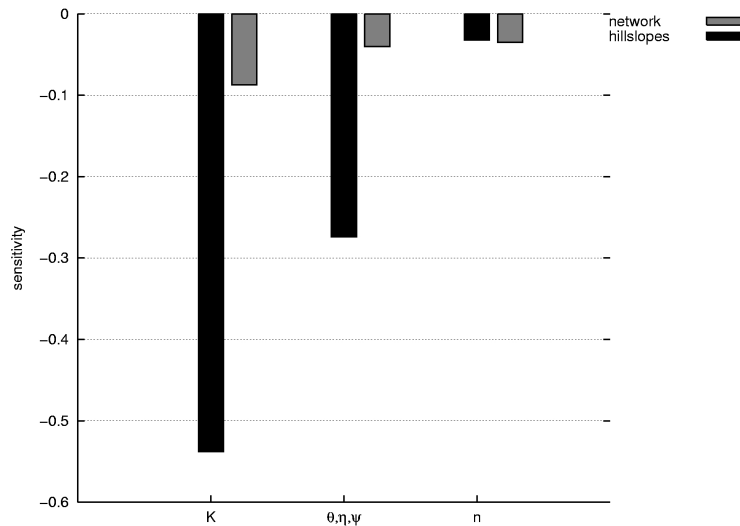
Full Screen / Esc

Printer-friendly Version

Interactive Discussion

**Adjoint sensitivity  
analysis and  
parameter estimation**

W. Castaings et al.



**Fig. 2.** Sensitivity of flood volume to model parameters.

Title Page

Abstract

Introduction

Conclusions

References

Tables

Figures

◀

▶

◀

▶

Back

Close

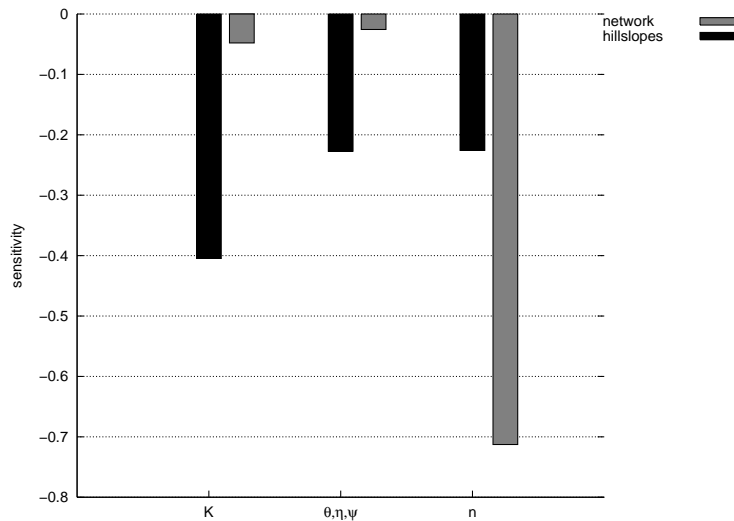
Full Screen / Esc

Printer-friendly Version

Interactive Discussion

## Adjoint sensitivity analysis and parameter estimation

W. Castaings et al.



**Fig. 3.** Sensitivity of flood peak to model parameters.

Title Page

Abstract

Introduction

Conclusions

References

Tables

Figures

◀

▶

◀

▶

Back

Close

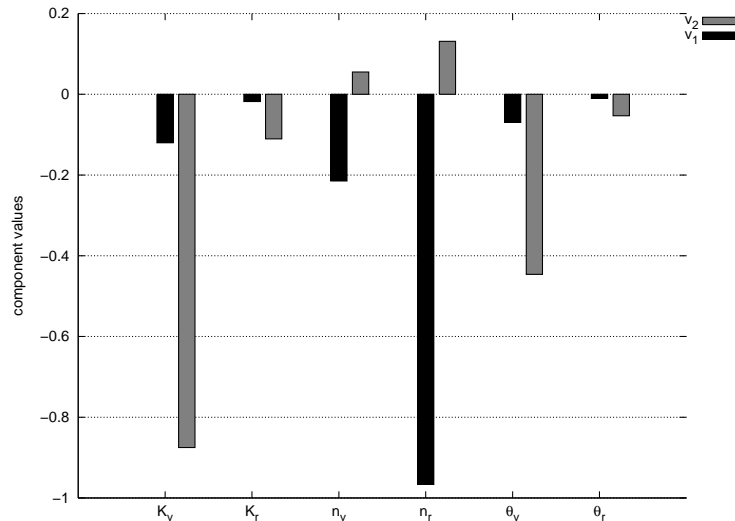
Full Screen / Esc

Printer-friendly Version

Interactive Discussion

**Adjoint sensitivity  
analysis and  
parameter estimation**

W. Castaings et al.



**Fig. 4.** Singular vectors components in the parameter space.

Title Page

Abstract

Introduction

Conclusions

References

Tables

Figures

◀

▶

◀

▶

Back

Close

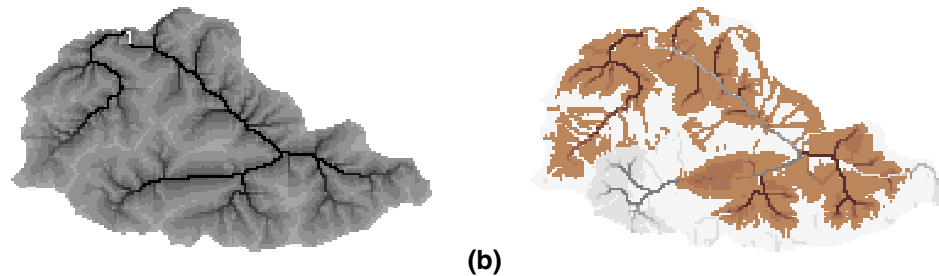
Full Screen / Esc

Printer-friendly Version

Interactive Discussion

Adjoint sensitivity  
analysis and  
parameter estimation

W. Castaings et al.



**Fig. 5.** Spatial visualization of the sensitivity of the response to the parameters: **(a)** sensitivity of flood volume to hydraulic conductivity  $K$ ; **(b)** sensitivity of flood peak to the roughness coefficient.

Title Page

Abstract

Introduction

Conclusions

References

Tables

Figures

◀

▶

◀

▶

Back

Close

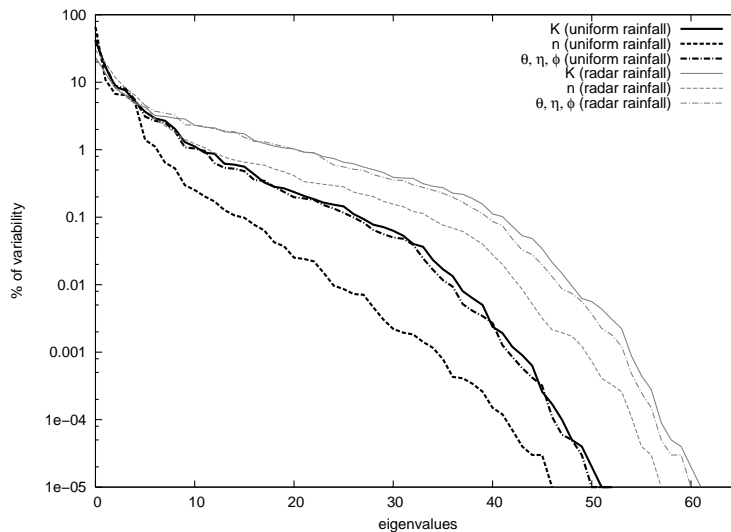
Full Screen / Esc

Printer-friendly Version

Interactive Discussion

**Adjoint sensitivity  
analysis and  
parameter estimation**

W. Castaings et al.



**Fig. 6.** Singular values spectrum for lumped and spatially variable rainfall.

Title Page

Abstract

Introduction

Conclusions

References

Tables

Figures

◀

▶

◀

▶

Back

Close

Full Screen / Esc

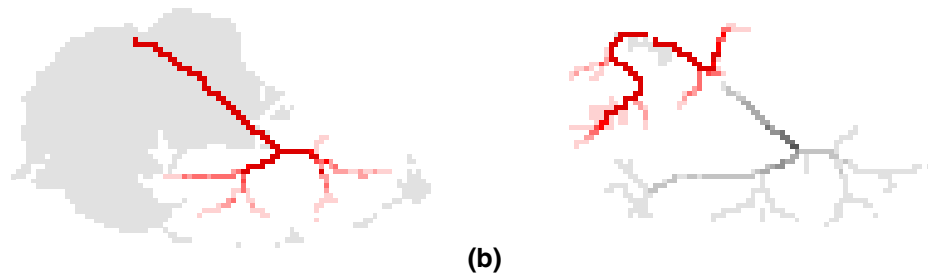
Printer-friendly Version

Interactive Discussion



**Adjoint sensitivity  
analysis and  
parameter estimation**

W. Castaings et al.



**Fig. 7.** Singular vectors **(a)**  $v_1$  and **(b)**  $v_2$  for the roughness coefficient  $n$  (red color ramp for positive components and gray for negative).

Title Page

Abstract

Introduction

Conclusions

References

Tables

Figures

◀

▶

◀

▶

Back

Close

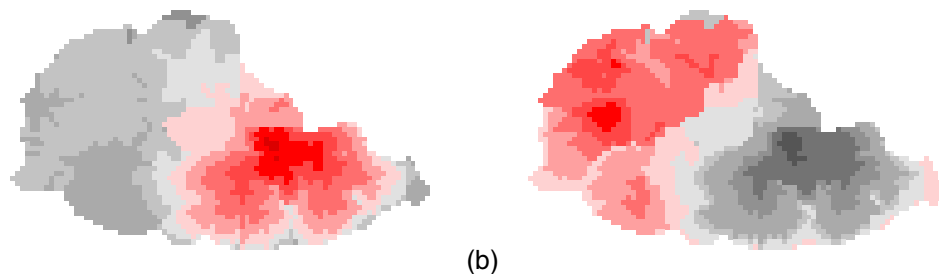
Full Screen / Esc

Printer-friendly Version

Interactive Discussion

Adjoint sensitivity  
analysis and  
parameter estimation

W. Castaings et al.



**Fig. 8.** Singular vectors **(a)**  $v_1$  and **(b)**  $v_2$  for hydraulic conductivity  $K$  (red color ramp for positive components and gray for negative).

Title Page

Abstract

Introduction

Conclusions

References

Tables

Figures

◀

▶

◀

▶

Back

Close

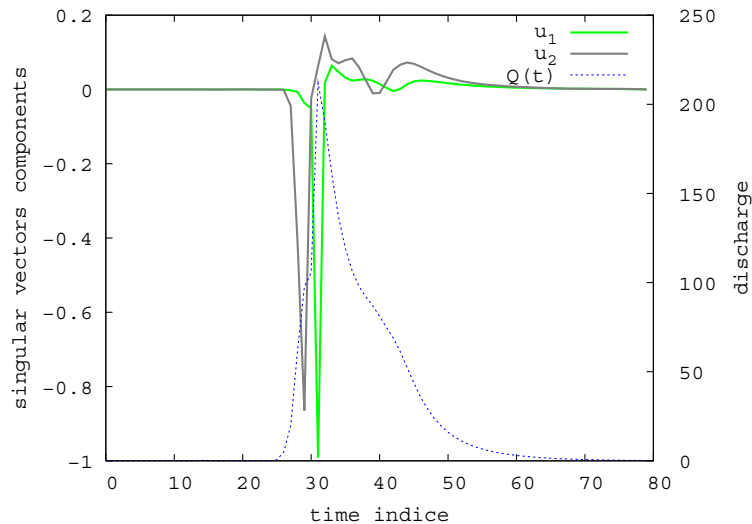
Full Screen / Esc

Printer-friendly Version

Interactive Discussion

**Adjoint sensitivity  
analysis and  
parameter estimation**

W. Castaings et al.



**Fig. 9.** Singular vectors in the observation space for the roughness coefficient  $n$ .

Title Page

Abstract

Introduction

Conclusions

References

Tables

Figures

◀

▶

◀

▶

Back

Close

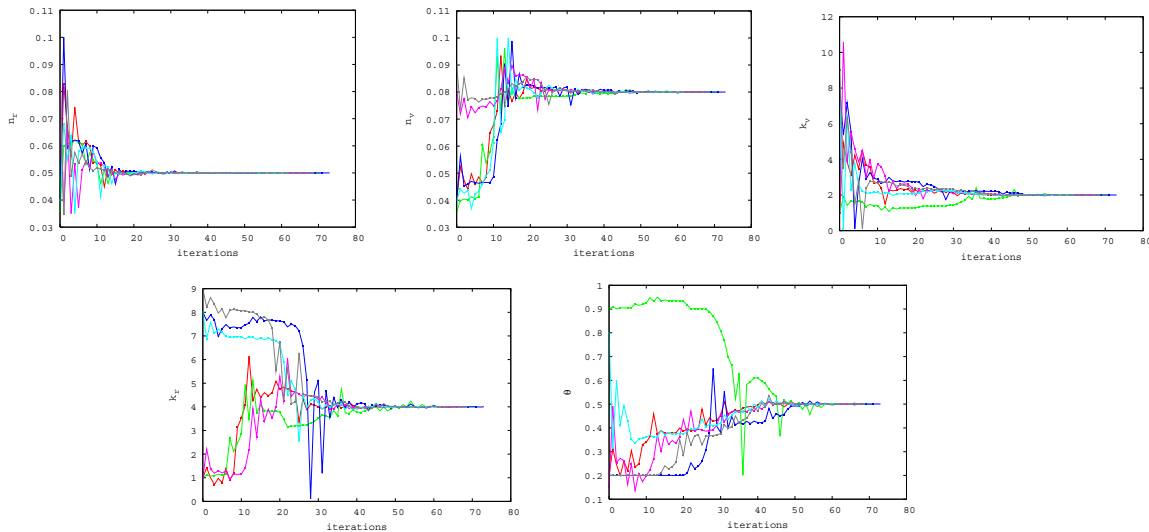
Full Screen / Esc

Printer-friendly Version

Interactive Discussion

## Adjoint sensitivity analysis and parameter estimation

W. Castaings et al.



**Fig. 10.** Convergence of the model parameters to the reference values for various initialization points in the parameter space.

[Title Page](#)
[Abstract](#)
[Introduction](#)
[Conclusions](#)
[References](#)
[Tables](#)
[Figures](#)
[◀](#)
[▶](#)
[◀](#)
[▶](#)
[Back](#)
[Close](#)
[Full Screen / Esc](#)
[Printer-friendly Version](#)
[Interactive Discussion](#)