



HAL
open science

Synchronization of ice core records via atmospheric gases

T. Blunier, R. Spahni, J.-M. Barnola, J. Chappellaz, L. Louergue, J. Schwander

► **To cite this version:**

T. Blunier, R. Spahni, J.-M. Barnola, J. Chappellaz, L. Louergue, et al.. Synchronization of ice core records via atmospheric gases. *Climate of the Past Discussions*, 2007, 3 (1), pp.365-381. hal-00330725

HAL Id: hal-00330725

<https://hal.science/hal-00330725>

Submitted on 18 Jun 2008

HAL is a multi-disciplinary open access archive for the deposit and dissemination of scientific research documents, whether they are published or not. The documents may come from teaching and research institutions in France or abroad, or from public or private research centers.

L'archive ouverte pluridisciplinaire **HAL**, est destinée au dépôt et à la diffusion de documents scientifiques de niveau recherche, publiés ou non, émanant des établissements d'enseignement et de recherche français ou étrangers, des laboratoires publics ou privés.

Climate of the Past Discussions is the access reviewed discussion forum of *Climate of the Past*

Synchronization of ice core records via atmospheric gases

T. Blunier¹, R. Spahni¹, J.-M. Barnola², J. Chappellaz², L. Loulergue², and J. Schwander¹

¹Climate and Environmental Physics, Physics Institute, University of Bern, Sidlerstrasse 5, 3012 Bern, Switzerland

²Laboratoire de Glaciologie et Géophysique de l'Environnement (LGGE), CNRS-UJF, 54 rue Molière, BP96 38402 Saint Martin d'Herès Cedex, France

Received: 12 January 2007 – Accepted: 24 January 2007 – Published: 15 February 2007

Correspondence to: T. Blunier (blunier@climate.unibe.ch)

CPD

3, 365–381, 2007

Synchronization of
ice core records via
atmospheric gases

T. Blunier et al.

Title Page

Abstract

Introduction

Conclusions

References

Tables

Figures

◀

▶

◀

▶

Back

Close

Full Screen / Esc

Printer-friendly Version

Interactive Discussion

EGU

Abstract

To interpret new high resolution climate records it becomes more and more important to know about the succession of climate events. Such knowledge is hard to get especially when dealing with different types of climate archives. Even for ice cores a direct synchronization between ice cores from Greenland and Antarctica has not been possible so far due to the lack of time markers occurring in both hemispheres. Fortunately, variations in the time series of global gas records can be used as indirect time markers. Here we discuss in detail the steps that are necessary to synchronize ice cores via global gas records exemplified on the synchronization of the EPICA ice core from Dronning Maud Land to a Greenland record from North GRIP.

1 Introduction

In-depth understanding of the climate system depends on the knowledge of the succession of climate events. This knowledge is jeopardized by the lack of absolute ages in climate archives. However, the necessity of absolute ages is only prerequisite when comparing climate records from paleo records to absolutely dated records like orbital parameters; else properly synchronized records are sufficient. Recently a lot of progress has been made in absolute dating of climate events (Shackleton et al., 2004). However, so far there is no direct way to obtain absolute ages for ice core records. Projects to measure ^{14}C are challenging and so far no reliable ages have been presented. A promising approach is to absolutely date ice cores via the apparent effect of local summer insolation on the O_2/N_2 ratio (Bender, 2002) or air content (Raynaud, personal communication). Ice cores from the same hemisphere can be linked via volcanic eruptions; e.g. a reliable relative dating between most Antarctic ice cores has been established (Ruth et al., 2007¹). Linking ice cores between hemispheres is

¹Ruth, U., Barnola, J.-M., Beer, J., et al.: "EDML1" A chronology for the EPICA deep ice core from Dronning Maud Land, Antarctica, over the last 150 000 years, submitted, 2007.

Synchronization of ice core records via atmospheric gases

T. Blunier et al.

Title Page

Abstract

Introduction

Conclusions

References

Tables

Figures

⏪

⏩

◀

▶

Back

Close

Full Screen / Esc

Printer-friendly Version

Interactive Discussion

Synchronization of ice core records via atmospheric gases

T. Blunier et al.

Title Page

Abstract

Introduction

Conclusions

References

Tables

Figures

◀

▶

◀

▶

Back

Close

Full Screen / Esc

Printer-friendly Version

Interactive Discussion

trickier. So far no volcanic layers beyond the historic era have been found in ice cores from both hemispheres which undoubtedly stem from the same eruption. One reliable age marker found in Greenland and Antarctic ice cores is the characteristic ^{10}Be double peak which corresponds to the Laschamp event at 40.4 ± 2 kyr BP (Guillou et al., 2004). Away from this synchronization point the time scales between Greenland and Antarctic ice cores diverge (Parrenin et al., 2007²; Ruth et al., 2007¹). The time scales can be linked via global gas parameters. Here the complication is, that the age of the gas occluded in the ice is not identical to the age of the surrounding ice. This age difference (Δage) is a result of the gas being occluded not on top of the ice sheet but in a depth of roughly 100 m below surface where the ice already has a significant age in the range of a few hundred up to a few thousand years. Δage can be calculated reliably for present day conditions (see for instance Blunier and Schwander, 2000) with a firn densification model. Here we discuss the procedure to synchronize ice cores; i.e. the EPICA Dronning Maud Land (EDML) core and the Greenland NGRIP core (EPICA community members, 2006). The ^{10}Be peak can be used to examine the reliability of the synchronization. On the other hand the ^{10}Be peak can be used to improve the Δage calculation with the help of the Δage model. This road is taken in the manuscript by Loulergue et al. (2007)³.

2 Global gas records

In principle any atmospheric gas record showing global variations can be used to synchronize ice cores from the two hemispheres. It is important that the lifetime of the gas is longer than the exchange time between the hemispheres to assure that variations

²Parrenin, F., Barnola, J.-M., Beer, J., et al.: The EDC agescale for the EPICA Dome C ice core, *Clim. Past. Discuss.*, in preparation, 2007.

³Loulergue, L., Parrenin, F., Blunier, T., Barnola, J. M., Spahni, R., Schilt, A., Raisbeck, G., and Chappellaz, J.: New constraints on the gas age-ice age difference along the EPICA ice cores, 0–50 kyr, *Clim. Past Discuss.*, submitted, 2007.

Synchronization of ice core records via atmospheric gases

T. Blunier et al.

Title Page

Abstract

Introduction

Conclusions

References

Tables

Figures

◀

▶

◀

▶

Back

Close

Full Screen / Esc

Printer-friendly Version

Interactive Discussion

in the atmospheric concentration occurring in one hemisphere have an impact on the atmospheric concentration in the other hemisphere. Another requirement is reliable measurements. From the lifetime point of view CO₂ and N₂O are suitable for synchronization. However, CO₂ can not be measured reliably in Greenland ice cores potentially due to chemical reactions in the ice leading to too high CO₂ concentrations (Anklin et al., 1997; Stauffer et al., 2003). N₂O although showing millennial scale variations can not be used since in Antarctic and Greenland ice artifacts occur preferentially where the dust content is high (Flückiger et al., 2004).

$\delta^{18}\text{O}$ of atmospheric O₂ ($\delta^{18}\text{O}_{\text{atm}}$) and CH₄ have been used in the past to synchronize ice cores (e.g. Bender et al., 1994a; Blunier and Brook, 2001; Blunier et al., 1998). $\delta^{18}\text{O}_{\text{atm}}$ is linked to the $\delta^{18}\text{O}$ of seawater by biology. The atmospheric turn over time is on the order of 1000 years. Therefore $\delta^{18}\text{O}$ of O₂ shows only slow variations. Due to the long atmospheric lifetime there is no measurable pole to pole gradient in $\delta^{18}\text{O}_{\text{atm}}$ (Bender et al., 1994b).

The lifetime of CH₄ is much shorter than for $\delta^{18}\text{O}_{\text{atm}}$, namely, only on the order of 10 years. The advantage of the short lifetime is that changes in the production or destruction rate of methane have a large almost immediate impact on the atmospheric CH₄ concentration. On the other hand the lifetime is only about ten times bigger than the atmospheric exchange time. Thus results a pole to pole gradient of a few per cent. Since CH₄ shows large variations in a short time over Dansgaard-Oeschger (DO) events it is especially suited for a precise synchronization of these events.

Unfortunately the CH₄ time series lacks larger variations during the critical period preceding the last termination. Here the synchronization over CH₄ has its largest uncertainty. $\delta^{18}\text{O}_{\text{atm}}$ has the potential to improve the synchronization. Between the last larger CH₄ variation around 28 kyr BP (corresponding to DO 3) and the Last Glacial-Bølling transition $\delta^{18}\text{O}_{\text{atm}}$ decreases by about 0.5‰. The accuracy of a $\delta^{18}\text{O}_{\text{atm}}$ of ±0.05 to ±0.08‰ (Fuchs and Leuenberger, 1996; Sowers and Bender, 1995) together with the lack of a pole to pole gradient should allow a firm synchronization over this time period. However, as we will demonstrate hereafter the quality of the data is not

Synchronization of ice core records via atmospheric gases

T. Blunier et al.

good enough to make an accurate synchronization. We compare $\delta^{18}\text{O}_{\text{atm}}$ from the GRIP and GISP2 cores. These two Greenland ice cores can be synchronized reliably over the isotopic signal of H_2O (Johnsen et al., 2001). The Δage of the two cores (see below) is almost identical and the uncertainty in the relative gas age is on the order of a few hundred years at most. Figure 1 shows the two $\delta^{18}\text{O}_{\text{atm}}$ records on the same time scale. The two records differ by more than what would be expected from the uncertainty of the measurements. A reliable synchronization on the century scale with $\delta^{18}\text{O}_{\text{atm}}$ will only be possible when the samples are remeasured. High precision measurements of $\delta^{18}\text{O}_{\text{atm}}$ are challenging and should be performed at the same time in the same laboratory. For now the atmospheric CH_4 record is still the best choice to obtain a good synchronization of Greenland and Antarctic ice cores.

3 Composite Greenland CH_4 record

At this time no complete high resolution Greenland CH_4 record exists from a single ice core covering the time period between 55 kyr BP and today. Therefore we built a composite record based on the GRIP, NGRIP, and GISP2 CH_4 data. This composite is the base for the synchronization between Greenland and Antarctic ice cores. The highest resolution record is from NGRIP. Unfortunately this record covers, so far, only the period 48 to 38 kyr BP (Flückiger et al., 2004). The entire time period is covered by the GRIP record but there are times when the resolution is relatively low, i.e. before 38 kyr BP (Blunier and Brook, 2001). Therefore we complement the GRIP and NGRIP record by GISP2 data before 38 kyr (Table 1).

The time scale for the composite is the layer counted NGRIP time scale GICC05 (Andersen et al., 2006; Rasmussen et al., 2007). Before 41 kyr BP the model time scale ss09sea (Andersen et al., 2004) is fitted to the counted time scale. Huber et al. (2006) found from the concomitant signal of rapid temperature variations in the $\delta^{15}\text{N}$ of N_2 that, for NGRIP, the modeled Δage is too small. By decreasing the accumulation rate for the model calculation by 20% they obtain an optimal fit of the model Δage for

[Title Page](#)[Abstract](#)[Introduction](#)[Conclusions](#)[References](#)[Tables](#)[Figures](#)[◀](#)[▶](#)[◀](#)[▶](#)[Back](#)[Close](#)[Full Screen / Esc](#)[Printer-friendly Version](#)[Interactive Discussion](#)

the time period where CH₄ data for NGRIP exist. The GRIP CH₄ data was assigned a NGRIP gas age as follows: For each GRIP CH₄ value we find the depth where the age of the ice (in the GRIP ice core) is identical to the age of the CH₄ value. Here we use the original GRIP Δ age calculation (Schwander et al., 1993). Interpolating between match points between GRIP and NGRIP (Rasmussen et al., 2006; Rasmussen et al., 2007) we find the corresponding depth in the NGRIP ice core. With the NGRIP time scale we then calculate a new age which is also the new gas age of the GRIP CH₄ data point on the NGRIP time scale. Note that no new Δ age calculation is applied. We use the original GRIP Δ age. For GISP2 we use a different approach. The GISP2 CH₄ data was matched directly on the existing NGRIP CH₄ data before 55 kyr BP (Huber et al., 2006) and after 48 kyr BP. GISP2 CH₄ data in the gap of the NGRIP data was assigned a NGRIP age by interpolation. The resulting Greenland composite record is shown in Fig. 1. No discrepancies between the CH₄ data from the three ice cores are found.

4 Matching CH₄ records

The EDML CH₄-record has a lower resolution and covers a shorter time span than the Greenland composite. Therefore we match the EDML record on the Greenland composite record. We do this using a Monte Carlo method which searches for a maximal correlation between the records (Schwander et al., 1997). The NGRIP reference record (a) has data points $a(t_i) i \in [1..n_a]$ where t_i is the gas age of a data point. First the EDML CH₄ record (b) is preliminary matched to the composite Greenland record by match points at the fast transitions. The EDML record consists of values $b(t_j) j \in [1..n_b]$. The Monte Carlo program then improves the preliminary time scale. The process is as follows: A subset of ℓ CH₄ values from EDML with age $t_k (k \in [1..\ell])$ is chosen. The program randomly assigns a new age $tn_k = t_k + \Delta t_k$ to these data points where Δt_k is chosen randomly within some limits. The drawing of new ages tn_k is repeated for 2000 times. The best correlation between sequences of k shifted methane values and the reference record is stored: $\max_{\text{corr}} (b(tn_k), a'(tn_k)) k \in [j..j+\ell-1]; j \in$

Synchronization of ice core records via atmospheric gases

T. Blunier et al.

Title Page

Abstract

Introduction

Conclusions

References

Tables

Figures

◀

▶

◀

▶

Back

Close

Full Screen / Esc

Printer-friendly Version

Interactive Discussion

Synchronization of ice core records via atmospheric gases

T. Blunier et al.

Title Page

Abstract

Introduction

Conclusions

References

Tables

Figures

◀

▶

◀

▶

Back

Close

Full Screen / Esc

Printer-friendly Version

Interactive Discussion

[$1..n_b - \ell + 1$]. Values a' of the reference record at times tn_k are interpolated linearly from the original record. The matching procedure is started with the subrecord window placed at one end of the methane record. The window is then shifted by one methane data point, and the random variations are repeated again keeping the first point fixed with the best tn value resulting from the previous window position. The window is shifted until it reaches the other end of the record. Values Δt_k are drawn randomly in discrete 25 year steps. We limit Δt_k to ± 1500 yr to hinder that the program assigns peaks to the CH_4 variation before or after the one it belongs to. Further Δt_k is chosen so that the relative “error” of the initial preliminary time scale is no bigger than 80%. New times tn_k are discarded if they change the succession of data points. Windows of ℓ values with variations smaller than 20 ppbv are not considered in order to avoid correlation of very small signals. It is possible to obtain a very high correlation with signals of very different amplitudes. For instance an identical but ten times smaller signal will have a correlation of 1 but is of course completely meaningless. To omit this situation the slope of the regression $b(tn_k)$ versus $a'(tn_k)$ has to be between 0.9 and 1.1 for a valid draw. For a solution to be considered valid the correlation coefficient has to be at least 0.85. It turned out that the method is quite insensitive toward the direction in which the window is moved through the record. The whole procedure is repeated 20 times for each direction. For each methane data point we have calculate mean and standard deviation of the Δt_k values meeting the conditions above. The standard deviation gives us a measure of how accurate the match is relatively from one point of the record to another. It does, however, not give us an absolute uncertainty since this parameter depends on the number of runs performed. With the CH_4 record of the Greenland composite and EDML on the same time scale we now calculate ice ages for the two sites applying Δage .

5 Error estimate

Three factors determine the uncertainty of the synchronization for the ice time scale. These are the uncertainties of Δage for the two ice cores and the uncertainty of the match of the CH_4 records. The latter is mainly determined by the resolution of the records. However, also the uncertainty of the concentration and the interhemispheric gradient of the CH_4 records are of some importance. We note, however, that this difference is smallest during the cold periods of the glacial (Dällenbach et al., 2000).

A firn densification model is used to calculate Δage . Δage is dependent on the local temperature and the accumulation rate (Fig. 2). Our model (Schwander et al., 1997) includes the heat transport in the firn but neglects heat diffusion from the bedrock (Goujon et al., 2003). Including the heat diffusion would lead to an increased temperature in the firn implicating a slightly smaller Δage . However, the difference is small and since all calculations were made with the same model this effect cancels out to some degree. Since the model is dynamic also the underlying time scale has an, although small, influence on Δage . The firn densification model proved to work very well under present day conditions. The model is capable to simulate the occlusion process under very different conditions ranging from accumulation rates as low as 0.02 to over $0.5 \text{ Mg m}^{-2} \text{ yr}^{-1}$ and temperatures from -58° to -13°C . Both NGRIP and EDML conditions for the last 60 kyr BP are fully within that range. The uncertainty of the Δage calculation originates mainly from the uncertainty of the input parameters. In Fig. 3 we show the range of Δage for EDML, GRIP (after 38 kyr BP) and NGRIP (before 38 kyr BP) allowing a 25% change in the accumulation rate. The effect on Δage is about equivalent to a 2% change in absolute temperature. Δage for NGRIP is larger than for GRIP mainly due to the lower accumulation rate at NGRIP relative to GRIP.

Here we used two synchronization methods to assess the temporal coupling of both hemispheres (EPICA community members, 2006). In the first method the high resolution Greenland composite CH_4 record has been matched with the EDML CH_4 record, making use of the global signal in atmospheric CH_4 changes. For NGRIP we use the

Synchronization of ice core records via atmospheric gases

T. Blunier et al.

Title Page

Abstract

Introduction

Conclusions

References

Tables

Figures

◀

▶

◀

▶

Back

Close

Full Screen / Esc

Printer-friendly Version

Interactive Discussion

Synchronization of ice core records via atmospheric gases

T. Blunier et al.

Title Page

Abstract

Introduction

Conclusions

References

Tables

Figures

◀

▶

◀

▶

Back

Close

Full Screen / Esc

Printer-friendly Version

Interactive Discussion

Δ age confirmed by the synchronous effect of a fast temperature change in the ice and the gas record. Using the NGRIP age scale and the Δ age at both sites we arrive at a synchronized time scale for the Greenland and Antarctic $\delta^{18}\text{O}$ records. The result of this approach (EPICA community members, 2006) is shown in Fig. 3. For this approach we estimate the total synchronization uncertainty at the start of DO events adding in quadrature the uncertainties for the synchronization of the CH_4 records and the two Δ ages for EDML and the Greenland composite. Based on the resolution and the structure of the CH_4 records we estimate that the uncertainty for the CH_4 synchronization is small over the Younger Dryas (about 100 years) and on the order of 200 years for most DO events. For DO 2 and DO 3 the error is larger, about 300 years. The total synchronization error adds to 250 yr for the YD, 500 yr for DO 2 and DO 3, and about 400 yr for other DO events. In between the rapid CH_4 changes the synchronization error may be larger. We estimate about 800 years where little CH_4 variations are found.

One Δ age uncertainty can be omitted by matching the Antarctic CH_4 record directly to the Greenland temperature record. It has been shown that rapid changes in temperature and CH_4 concentration at the beginning of DO events are concomitant or with only a small time lag of 25–70 yr (Huber et al., 2006). However, this is not possible for all times. Although the two signals are very similar there are differences in the structure of the temperature and the CH_4 records. This approach gives, where applicable, identical solutions with the first approach (Fig. 3).

Since variations of the Greenland temperature and the CH_4 record are so similar a comparison of the EDML $\delta^{18}\text{O}$ record to its CH_4 record is synonymous to a (low resolution) comparison to the Greenland temperature. This third method avoids again the calculation of Δ age for the Greenland records.

As pointed out above, method 2 and 3 are not applicable for all temporal changes in the CH_4 record due to the different nature of the CH_4 and $\delta^{18}\text{O}$ signal. Nevertheless, all three approaches give essentially the same results in terms of succession of climate events between Greenland and Antarctic temperature variations.

An independent check of our CH_4 synchronization of the $\delta^{18}\text{O}$ records comes from

the ^{10}Be peak at approximately 40.4 ± 2 kyr BP (Guillou et al., 2004). Here the direct synchronization of $\delta^{18}\text{O}$ records using ^{10}Be (which is accurate to within ± 200 years, Raisbeck et al., 2002) and synchronization via the CH_4 records involving the gas age/ice age difference agree within the synchronization uncertainties. In summary the CH_4 synchronization allows a reliable comparison of millennial climate variations between the hemispheres. The quantification of the exact timing of peak warmth in Antarctica and rapid transitions in Greenland is generally better than 400 years.

6 Conclusions

While a direct synchronization of ice core records from the two hemispheres is pending, matching of gas records is currently the best tool to interpret the link of climate events in the two hemispheres. The quality of the synchronization depends on the quality of the gas records and their resolution but to a main portion on the ability to calculate Δage . Climate conditions of the past for EDML and NGRIP are within the range of modern analogues for which the densification model is proven to work. However, the quality of the synchronization can be increased when direct observations of Δage allow tuning the model for uncertainties of the input parameters. For Greenland such an improvement can be made over the $\delta^{15}\text{N}$ record reacting to drastic temperature changes (Huber et al., 2006). For Antarctica such an approach is with exceptions not possible. The ^{10}Be peak is a first possibility to constrain the densification model for EDML and EDC although not independently (Loulergue et al., 2007³).

Acknowledgements. This work is a contribution to the European Project for Ice Coring in Antarctica (EPICA), a joint European Science Foundation/European Commission scientific programme, funded by the EU (EPICA-MIS) and by national contributions from Belgium, Denmark, France, Germany, Italy, the Netherlands, Norway, Sweden, Switzerland and the UK.

Synchronization of ice core records via atmospheric gases

T. Blunier et al.

Title Page

Abstract

Introduction

Conclusions

References

Tables

Figures

◀

▶

◀

▶

Back

Close

Full Screen / Esc

Printer-friendly Version

Interactive Discussion

References

- Andersen, K. K., Azuma, N., Barnola, J. M., et al.: High-resolution record of Northern Hemisphere climate extending into the last interglacial period, *Nature*, 431, 147–151, 2004.
- Andersen, K. K., Svensson, A., Johnson, S. J., et al.: The Greenland Ice Core Chronology 2005, 15–42 kyr. Part 1: Constructing the time scale, *Quat. Sci. Rev.*, 3246–3257, 2006.
- 5 Anklin, M., Schwander, J., Stauffer, B., Tschumi, J., Fuchs, A., Barnola, J. M., and Raynaud, D.: CO₂ record between 40 and 8 kyr B.P. from the Greenland Ice Core Project ice core, *J. Geophys. Res.*, 102, 26 539–26 546, 1997.
- Bender, M., Sowers, T., Dickson, M.-L., Orchardo, J., Grootes, P., Mayewski, P. A., and D. A.: Climate correlations between Greenland and Antarctica during the past 100 000 years, *Nature*, 372, 663–666, 1994a.
- 10 Bender, M., Sowers, T., and Labeyrie, L.: The Dole effect and its variations during the last 130 000 years as measured in the Vostok ice core, *Global Biogeochem. Cycles*, 8, 363–376, 1994b.
- 15 Bender, M. L.: Orbital tuning chronology for the Vostok climate record supported by trapped gas composition, *Earth Planet. Sci. Lett.*, 204, 275–289, 2002.
- Blunier, T. and Brook, E. J.: Timing of millennial-scale climate change in Antarctica and Greenland during the last glacial period, *Science*, 291, 109–112, 2001.
- Blunier, T., Chappellaz, J., Schwander, J., et al.: Asynchrony of Antarctic and Greenland climate change during the last glacial period, *Nature*, 394, 739–743, 1998.
- 20 Blunier, T. and Schwander, J.: Gas enclosure in ice: age difference and fractionation, in: *Physics of ice core records*, edited by: Hondoh, T., 307–326, Hokkaido University Press, Sapporo, 2000.
- Dällenbach, A., Blunier, T., Flückiger, J., Stauffer, B., Chappellaz, J., and Raynaud, D.: Changes in the atmospheric CH₄ gradient between Greenland and Antarctica during the Last Glacial and the transition to the Holocene, *Geophys. Res. Lett.*, 27, 1005–1008, 2000.
- 25 EPICA community members: One-to-one coupling of glacial climate variability in Greenland and Antarctica, *Nature*, 444, 196–198, 2006.
- Flückiger, J., Blunier, T., Stauffer, B., Chappellaz, M., Spahni, R., Kawamura, K., Schwander, J., Stocker, T. F., and Dahl-Jensen, D.: N₂O and CH₄ variations during the last glacial epoch: Insight into global processes, *Global Biogeochem. Cycles*, 18, GB1020, doi:10.1029/2003GB002122, 2004.
- 30

CPD

3, 365–381, 2007

Synchronization of ice core records via atmospheric gases

T. Blunier et al.

Title Page

Abstract

Introduction

Conclusions

References

Tables

Figures

◀

▶

◀

▶

Back

Close

Full Screen / Esc

Printer-friendly Version

Interactive Discussion

EGU

Fuchs, A. and Leuenberger, M.: $\delta^{18}\text{O}$ of atmospheric oxygen measured on the GRIP ice core document stratigraphic disturbances in the lowest 10% of the core, *Geophys. Res. Lett.*, 23, 1049–1052, 1996.

Goujon, C., Barnola, J. M., and Ritz, C.: Modeling the densification of polar firn including heat diffusion: Application to close-off characteristics and gas isotopic fractionation for Antarctica and Greenland sites, *J. Geophys. Res.-Atmos.*, 108, 4792, doi:10.1029/2002JD003319, 2003.

Guillou, H., Singer, B. S., Laj, C., Kissel, C., Scaillet, S., and Jicha, B. R.: On the age of the Laschamp geomagnetic excursion, *Earth Planet. Sci. Lett.*, 227, 331–343, 2004.

Huber, C., Leuenberger, M., Spahni, R., Fluckiger, J., Schwander, J., Stocker, T. F., Johnsen, S., Landals, A., and Jouzel, J.: Isotope calibrated Greenland temperature record over Marine Isotope Stage 3 and its relation to CH₄, *Earth Planet. Sci. Lett.*, 243, 504–519, 2006.

Johnsen, S. J., Dahl-Jensen, D., Gundestrup, N., Steffensen, J. P., Clausen, H. B., Miller, H., Masson-Delmotte, V., Sveinbjornsdottir, A. E., and White, J.: Oxygen isotope and palaeotemperature records from six Greenland ice-core stations: Camp Century, Dye-3, GRIP, GISP2, Renland and NorthGRIP, *J. Quat. Sci.*, 16, 299–307, 2001.

Raisbeck, G. M., Yiou, F., and Jouzel, J.: Cosmogenic Be-10 as a high resolution correlation tool for climate records, *Geochim. Cosmochim. Acta*, 66, A623–A623, 2002.

Rasmussen, S. O., Seierstad, I. K., Andersen, K. K., Bigler, M., and Johnsen, S. J.: Synchronization of the NGRIP, GRIP, and GISP2 ice cores across MIS 2 and palaeoclimatic implications, *Quat. Sci. Rev.*, in press, 2007.

Rasmussen, S. O., Andersen, K. K., Svensson, A. M., et al.: A new Greenland ice core chronology for the last glacial termination, *J. Geophys. Res.*, 111, D06102, doi:10.1029/2005JD006079, 2006.

Schwander, J., Barnola, J.-M., Andrié, C., Leuenberger, M., Ludin, A., Raynaud, D., and Stauffer, B.: The age of the air in the firn and the ice at Summit, Greenland, *J. Geophys. Res.*, 98, 2831–2838, 1993.

Schwander, J., Sowers, T., Barnola, J.-M., Blunier, T., Malaizé, B., and Fuchs, A.: Age scale of the air in the summit ice: Implication for glacial-interglacial temperature change, *J. Geophys. Res.*, 102, 19 483–19 494, 1997.

Shackleton, N. J., Fairbanks, R. G., Chiu, T. C., and Parrenin, F.: Absolute calibration of the Greenland time scale: implications for Antarctic time scales and for Delta C-14, *Quat. Sci. Rev.*, 23, 1513–1522, 2004.

CPD

3, 365–381, 2007

Synchronization of ice core records via atmospheric gases

T. Blunier et al.

Title Page

Abstract

Introduction

Conclusions

References

Tables

Figures

◀

▶

◀

▶

Back

Close

Full Screen / Esc

Printer-friendly Version

Interactive Discussion

EGU

Sowers, T. and Bender, M.: Climate records covering the last deglaciation, *Science*, 269, 210–214, 1995.

Sowers, T. A., M. L., and Raynaud, D.: Elemental and isotopic composition of occluded O₂ and N₂ in polar ice, *J. Geophys. Res.*, 94, 5137–5150, 1989.

- 5 Stauffer, B., Flückiger, J., Monnin, E., Nakazawa, T., and Aoki, S.: Discussion of the reliability of CO₂, CH₄ and N₂O records from polar ice cores, in: Global scale climate and environment study through polar deep ice cores: Proceeding of the international symposium on Dome Fuji ice core and related topics, 27–28 February 2001, Tokyo, edited by: H., and Watanabe, O., 139–152, National Institute of Polar Research, Tokyo, 2003.

CPD

3, 365–381, 2007

Synchronization of ice core records via atmospheric gases

T. Blunier et al.

Title Page

Abstract

Introduction

Conclusions

References

Tables

Figures

⏪

⏩

◀

▶

Back

Close

Full Screen / Esc

Printer-friendly Version

Interactive Discussion

EGU

Synchronization of ice core records via atmospheric gases

T. Blunier et al.

Table 1. CH₄ data for the Greenland composite.

Core	Gasage interval* (yr BP)	Depth interval** (m)	Samples (#)	Resolution (yr)
NGRIP	38 122–48 215	2085.1–2249.5	164	63±26
NGRIP	54 922 – NA	2358.9–2463.5	125	67±45
GRIP	10 128–59 257	1529.6–2472.8	276	179±203
	10 128–38 000	1529.6–2205.9	223	126±103
	38 000–59 257	1529.6–2472.8	53	408±329
GISP2	38 412–60 086	2205.9–2511.9	145	236±214

* Ages are given on the layer counted NGRIP time scale GICC05 (Andersen, 2006; Rasmussen, 2006). Before 41 kyBP the model time scale ss09sea (Andersen et al., 2004) is fitted to the counted time scale. ** Depths are original depth from the individual ice cores.

Title Page

Abstract

Introduction

Conclusions

References

Tables

Figures

◀

▶

◀

▶

Back

Close

Full Screen / Esc

Printer-friendly Version

Interactive Discussion

Synchronization of ice core records via atmospheric gases

T. Blunier et al.

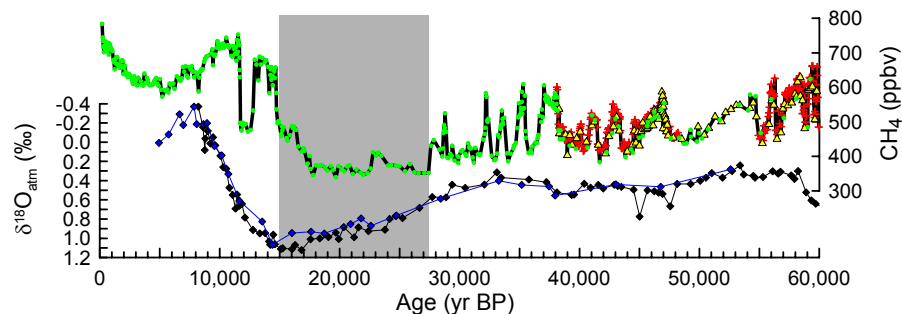


Fig. 1. Top: CH_4 records used for the composite. Green Dots: GRIP; Yellow Triangles GISP2 (Blunier and Brook, 2001). Red Crosses: NGRIP (Flückiger et al., 2004). The synchronization period starts at 55 kyr BP. The NGRIP data before 55 kyr BP were used to match the GISP2 data correctly on the NGRIP time scale. The grey area marks the period where the synchronization via CH_4 has its largest uncertainty. Bottom: $\delta^{18}\text{O}$ of atmospheric O_2 from GRIP (Blue diamonds) and GISP2 (Black diamonds) (Fuchs and Leuenberger, 1996; Sowers et al., 1989). All the records are plotted on the NGRIP time scale.

Title Page

Abstract

Introduction

Conclusions

References

Tables

Figures

◀

▶

◀

▶

Back

Close

Full Screen / Esc

Printer-friendly Version

Interactive Discussion

Synchronization of ice core records via atmospheric gases

T. Blunier et al.

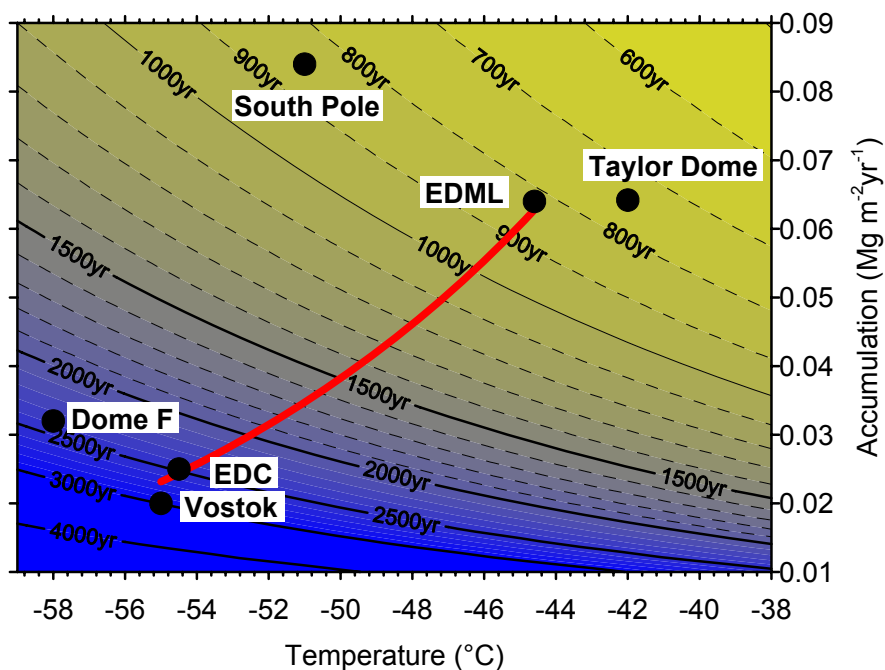


Fig. 2. Δ age over the range of temperature and accumulation rate of the EDML record back to 60 kyr BP. Δ age was calculated with a steady state version of our model. The red line shows the temperature and accumulation range used for the Δ age calculation. The black dots show present conditions for several Antarctic ice cores.

Title Page

Abstract

Introduction

Conclusions

References

Tables

Figures

◀

▶

◀

▶

Back

Close

Full Screen / Esc

Printer-friendly Version

Interactive Discussion

Synchronization of ice core records via atmospheric gases

T. Blunier et al.

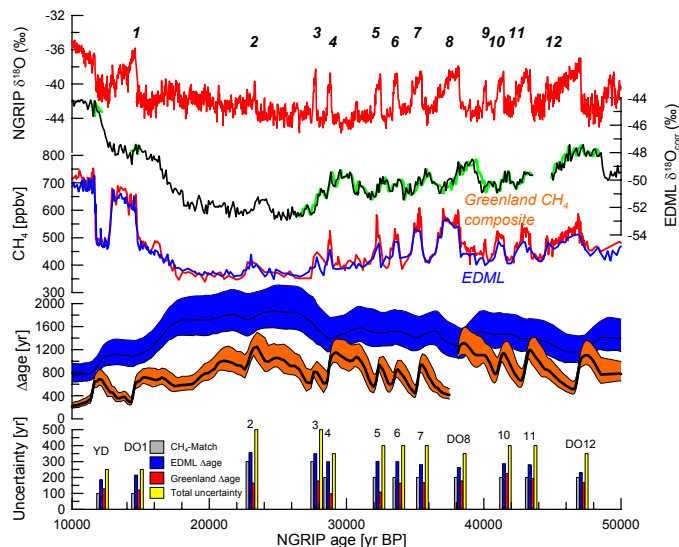


Fig. 3. From top to bottom: NGRIP $\delta^{18}\text{O}$ record, a proxy for the local temperature (Andersen et al., 2004). $\delta^{18}\text{O}$ from EDML corrected for sea level and upstream correction (see EPICA community members, 2006, for details). This record is synchronized to the NGRIP record: The result of two approaches is shown: 1) EDML was synchronized via methane records from NGRIP and EDML (black line); 2) The EDML methane record was directly linked to the $\delta^{18}\text{O}$ of NGRIP (green line), see text for details. CH_4 records for Greenland (red) and EDML (blue). Δage with uncertainty corresponding to a 25% change in the accumulation rate. The effect is about similar to a 2% change in absolute temperature. Blue for EDML and red for the Greenland composite, respectively. Before 38 kyr BP the synchronization is based on NGRIP data and the NGRIP Δage is shown. After 38 kyr the synchronization is based on GRIP CH_4 data and the GRIP Δage is shown. Uncertainty of the synchronization: The grey bar represents the uncertainty of the CH_4 synchronization. Blue and Red bars show the uncertainty of Δage assuming a 25% change in accumulation for EDML and the Greenland composite, respectively. The three components are added in quadrature to a total uncertainty for the synchronization of the ice records (yellow bar).

Title Page

Abstract

Introduction

Conclusions

References

Tables

Figures

◀

▶

◀

▶

Back

Close

Full Screen / Esc

Printer-friendly Version

Interactive Discussion