



**HAL**  
open science

## Modelling the Early Weichselian Eurasian Ice Sheets: role of ice shelves and influence of ice-dammed lakes

V. Peyaud, C. Ritz, G. Krinner

► **To cite this version:**

V. Peyaud, C. Ritz, G. Krinner. Modelling the Early Weichselian Eurasian Ice Sheets: role of ice shelves and influence of ice-dammed lakes. *Climate of the Past Discussions [Climate of the Past Preprints]*, 2007, 3 (1), pp.221-247. hal-00330724

**HAL Id: hal-00330724**

**<https://hal.science/hal-00330724v1>**

Submitted on 18 Jun 2008

**HAL** is a multi-disciplinary open access archive for the deposit and dissemination of scientific research documents, whether they are published or not. The documents may come from teaching and research institutions in France or abroad, or from public or private research centers.

L'archive ouverte pluridisciplinaire **HAL**, est destinée au dépôt et à la diffusion de documents scientifiques de niveau recherche, publiés ou non, émanant des établissements d'enseignement et de recherche français ou étrangers, des laboratoires publics ou privés.

*Climate of the Past Discussions* is the access reviewed discussion forum of *Climate of the Past*

# Modelling the Early Weichselian Eurasian Ice Sheets: role of ice shelves and influence of ice-dammed lakes

V. Peyaud, C. Ritz, and G. Krinner

Laboratoire de Glaciologie et de Géophysique de l'Environnement, Université Joseph Fourier  
54, rue Molière, Domaine Universitaire, BP 96, 38402 Saint Martin d'Hères Cedex, France

Received: 9 November 2006 – Accepted: 13 December 2006 – Published: 26 January 2007

Correspondence to: V. Peyaud (peyaud@lgge.obs.ujf-grenoble.fr)

CPD

3, 221–247, 2007

## Modelling the Early Weichselian Eurasian Ice Sheets

V. Peyaud et al.

Title Page

Abstract

Introduction

Conclusions

References

Tables

Figures

◀

▶

◀

▶

Back

Close

Full Screen / Esc

Printer-friendly Version

Interactive Discussion

EGU

## Abstract

During the last glaciation, a marine ice sheet repeatedly appeared in Eurasia. The floating part of this ice sheet was essential to its rapid extension over the seas. During the earliest stage (90 kyr BP), large ice-dammed lakes formed south of the ice sheet.

5 These lakes are believed to have cooled the climate at the margin of the ice. Using an ice sheet model, we investigated the role of ice shelves during the inception and the influence of ice-dammed lakes on the ice sheet evolution. Inception in Barents sea seems due to thickening of a large ice shelf. We observe a substantial impact of the lakes on the evolution of the ice sheets. Reduced summer ablation enhances ice  
10 extent and thickness, and the deglaciation is delayed by 2000 years.

## 1 Introduction

The last glacial period witnessed the growth and decay of a large ice complex over the North Eurasia. Geological evidences suggest that the first glacial event occurred around 90 ka BP. This glaciation was probably due to a low insolation during summer  
15 and an increase in snowfall (Ruddiman and McIntyre, 1981; Jackson and Broccoli, 2003). In this paper we focus on the Early Weichselian in Eurasia (MIS5b ~90 ka BP), as this short event started and finished with almost ice free conditions and can be treated independently of the rest of the glaciation.

At that time, a large ice sheet covered the Barents and Kara seas from the continental-shelf edge, where it leaned against the Arctic archipelago, to the south of the present Siberian coast. This ice sheet was mostly marine, that is, its base was below sea-level. Therefore, the Barents-Kara ice sheet was most probably unstable and very sensitive to oceanic influence, similar to the West Antarctic ice sheet today  
20 (Oppenheimer, 1998). Thus, the role of the floating part (ice shelf) might have been essential during its inception and disintegration.

According to the conclusion of the QUEEN project (Svendsen et al., 2004), the

CPD

3, 221–247, 2007

## Modelling the Early Weichselian Eurasian Ice Sheets

V. Peyaud et al.

Title Page

Abstract

Introduction

Conclusions

References

Tables

Figures

⏪

⏩

◀

▶

Back

Close

Full Screen / Esc

Printer-friendly Version

Interactive Discussion

EGU

Barents-Kara ice sheet was coalescent with an ice dome located over Scandinavia on the West, and with the Putorana ice cap on the East (see Fig. 1). This ice complex put up a dam that stopped the northward drainage of Siberian rivers. The large ice-dammed lakes created south of the ice were shown to have cooled regional summer climate (because of their large heat capacity) and modified precipitation (through mesoscale atmospheric feedbacks) (Krinner et al., 2004). These effects reduced the ablation and thus were inferred to favour ice sheet growth. To complement the study by Krinner et al. (2004), which discussed the impact of ice-dammed lakes on climate, we want to investigate in more detail the lakes influence on the ice sheets.

To this end, we use a numerical ice sheet model to reconstruct the geometric evolution of the ice sheet. This model features ice shelves as well as grounded ice and allow us to test different assumptions for the glaciation of this area. In contrast to previous studies using a calving parameter to determine the limit of grounded ice (Zweck and Huybrechts, 2005; Siegert et al., 2001), we applied for the first time a model of grounded and floating ice to a whole northern ice sheet.

We describe briefly the ice sheet model and the climate forcing, adapted from Krinner et al. (2004). Then we discuss the mechanism of the marine ice sheet inception and waxing. We present different reconstructions taking (or not) into account the impact of the ice-dammed and discuss their plausibility.

## 2 Experiments

### 2.1 Ice sheet model description

We used the GRISLI ice sheet model (ISM) to reconstruct the ice sheet topography during the 90 ka BP glacial event. GRISLI simulates the dynamics of grounded ice as well as ice shelves and ice stream regions. Inland ice deforms according to the stress balance using the shallow ice approximation (Morland, 1984; Hutter, 1983). Ice shelves and dragging ice shelves (ice streams) are described following MacAyeal (1989). This

## Modelling the Early Weichselian Eurasian Ice Sheets

V. Peyaud et al.

Title Page

Abstract

Introduction

Conclusions

References

Tables

Figures

◀

▶

◀

▶

Back

Close

Full Screen / Esc

Printer-friendly Version

Interactive Discussion

3-D model has been developed and validated over Antarctica by Ritz et al. (2001). A comprehensive description of the model is given by these authors. We therefore simply present recent improvements:

- i- Thermomechanical coupling was extended to the ice shelves and ice streams. Ice viscosity – depending on the temperature field – is integrated over the thickness.
- ii- Basal drag under ice streams is related to ice velocity ( $\tau_b = \beta U$ ). The factor  $\beta$  depends on the effective pressure  $N$ :  $\beta = -cf \times N$ , where  $cf$  is constant.
- iii- We compute basal water drainage with a Darcian flow into a sediment layer. The thickness of the sediment layer is set to the ad-hoc value of 50 m. This description is too simplistic to account for the real basal processes. Nevertheless Darcian flow allow us to catch the drainage patterns.
- iv- Location of the ice streams is determined by the basal water head. Ice stream regions correspond to areas where the sediment layer is saturated.
- v- Ice shelf fronts are determined using a Lagrangian scheme. This scheme follows ice thickness between the grid points immediately upstream of the front and the grid points on the front. Calving is deemed to occur when the ice front thickness decreases below 150 m. This corresponds to the thickness of most observed ice shelf fronts. Oppositely, if the Lagrangian scheme forecasts that the front will exceed the threshold thickness, no calving occurs, even if the front is presently too thin. Ice shelf front position changes at each time step and appropriate boundary conditions, adapted from Rommelaere and Ritz (1996) and Ritz et al. (2001), are applied for the different front configurations.

## 2.2 Input maps

We assume that the initial bedrock was similar to present. Since no large glaciation is known in this area between the Saalian (140 000 years ago) and 90 kyr BP (Svendsen et al., 2004), no isostatic effects should deform the bedrock. Bedrock elevation

## Modelling the Early Weichselian Eurasian Ice Sheets

V. Peyaud et al.

Title Page

Abstract

Introduction

Conclusions

References

Tables

Figures

◀

▶

◀

▶

Back

Close

Full Screen / Esc

Printer-friendly Version

Interactive Discussion

and bathymetry is given by the ETOPO2 dataset. Isostatic response is described by the ELRA (for elastic lithosphere-relaxed asthenosphere) method (Le Meur and Huybrechts, 1996). This deflection is partly responsible for the formation of ice-dammed lakes and will be discussed. We apply a heterogeneous geothermal heat flux from Shapiro and Ritzwoller (2004).

## 2.3 Climate forcing

### 2.3.1 AGCM climatic fields

In order to reconstruct the Eurasian Ice Sheet during the 90 kyr event, we adapted climates reconstructed by Krinner et al. (2004). These authors used the LMDZ3.3 (Laboratoire de Météorologie Dynamique, CNRS Paris) stretched-grid atmospheric general circulation model (AGCM) to investigate the Eurasian climate around 90 kyr before present (BP). They carried out three simulations, a present-day reference (henceforth GCM-P) and two simulations for 90 kyr before present (BP). One included ice-dammed lakes (GCM-LA), the other did not (no lakes, or GCM-NL). Eurasian precipitations and summer (JJA) air temperatures at two metres above the surface are shown in Fig. 2.

Compared to the present day climatology, the simulated climate for the present (GCM-P) gives appropriate temperatures, but precipitation is overestimated by more than 60% over the Eurasian continent, as stated by Krinner et al. (2004).

The simulated surface air temperature anomaly at 90 ky BP (difference to the present-day climate) is strongly negative over the ice sheets and the oceans. This is caused by the prescribed SSTs, ice sheet extent (albedo and topography), and lower greenhouse gas (GHG) concentrations. However ice-free continents are warmer at 90 kyr during summer (JJA). The 90 ka simulation are performed with a summer (JJA) insolation ( $496 \text{ W m}^{-2}$  at solstice) higher than at 0 kyr; this overcompensates for the cooling induced by lower GHG concentrations, sea surface temperatures and adjacent ice sheets. This warming is confined south of the ice sheet; on the ice sheets, the cooling effects of high snow albedo and surface elevation are preponderant. Precipitation

## Modelling the Early Weichselian Eurasian Ice Sheets

V. Peyaud et al.

Title Page

Abstract

Introduction

Conclusions

References

Tables

Figures

◀

▶

◀

▶

Back

Close

Full Screen / Esc

Printer-friendly Version

Interactive Discussion

is higher than at present in the 90 kyr simulations, especially over the Scandinavian mountains, the Barents Sea and around the Siberian coast (see Fig. 2).

### 2.3.2 Surface mass balance of the ISM

We use the AGCM air temperature and precipitation to reconstruct the climate at the surface of the ice sheet model following Charbit et al. (2002). The significant difference with respect to that work is that we apply AGCM climate directly to the ISM surface instead of the relative differences between 90 kyr and control (P) climate. In this work, the imposed surface climate is driven by summer insolation. Using the AGCM simulation, we derived synthetic climatic snapshots to force the ISM at the warm (initial and final) and cold periods. The climate forcing evolves from warm to cold conditions following the 65° N solstice summer insolation (Paillard et al., 1996) as described in the following.

Temperatures at the ice sheet surface are given by the AGCM air temperature at 2 m above the surface. We used the mean annual temperature and the averaged summer (JJA) temperature. Temperature is corrected for altitude changes calculated by the ISM. Vertical temperature gradient is set to  $-5^{\circ}\text{C km}^{-1}$  during summer and to  $-6^{\circ}\text{C km}^{-1}$  for averaged annual temperature. These gradients are weaker than in Charbit et al. (2002) and motivated by results from observations (Fortuin and Oerlemans, 1990) and AGCM simulations (Krinner and Genthon, 1999).

We assume that precipitation depends on annual temperature with an exponential law reflecting the saturation water pressure (Charbit et al., 2002). Accumulation is the solid fraction of the total precipitation. Ablation is calculated according to a positive degree day method (Reeh, 1991). The melting coefficient have been chosen in order to fit with AGCM ablation at 90 kyr. They are equal to  $C_{\text{snow}}=8 \text{ mm }^{\circ}\text{C}^{-1} \text{ d}^{-1}$  for snow, and  $C_{\text{ice}}=17 \text{ mm }^{\circ}\text{C}^{-1} \text{ d}^{-1}$  for ice. The discrepancies between our coefficients and those given by Reeh (3 times lower) are due to our calculation of PDD – assuming a sinusoidal variation of temperature trough the year – that probably underestimates extreme temperatures. A fraction of the melting is likely to refreeze. As in the AGCM

## Modelling the Early Weichselian Eurasian Ice Sheets

V. Peyaud et al.

Title Page

Abstract

Introduction

Conclusions

References

Tables

Figures

◀

▶

◀

▶

Back

Close

Full Screen / Esc

Printer-friendly Version

Interactive Discussion

(Krinner et al., 2007) this fraction increases as the amount of melting compared to snow fall decreases.

### 2.3.3 Forcing method

The forcing method is presented in the Fig. 3.

We use 4 climate snapshots at 105, 95, 90 and 85 kyr ago adapted from the AGCM simulations. The temperatures and precipitations at any time between these dates is obtained by an interpolation between two snapshots (for instance at 87.5 ka we used the 90 and 85 kyr snapshots) that vary in time with the insolation, as presented below.

The 90 ky BP snapshot is directly given by the AGCM simulations of Krinner et al. (2004). To construct the 105, 95 and 85 ky BP snapshots, we assumed that insolation changes are the primary causes of the climatic variations during the period considered. Siebert et al. (2001) shows that forcing the climate with insolation allows to build realistic Eurasian ice sheets through the full last glacial cycle. We take the impact of insolation changes into account by three means:

- i- We use a glacial index proportional to summer (solstice) insolation at 65° N. The climatic conditions vary from initial warm conditions (at 105 ka BP) to cold conditions. The lowest insolation occurs at 95 ka (as presented in the Fig. 3).
- ii- Warm conditions prevail at 105 and 85 kyr ago and the corresponding snapshots are derived from the control (GCM-P) climate.
- iii- At 90 kyr, climate is directly given by the Krinner et al. (2004) GCM-NL or GCM-LA climate, as stated before.
- iv- The coldest climate occurs at 95 kyr. It is slightly different from the 90 kyr GCM simulations because of the following considerations: First, tests show that climate given by the AGCM 90 kyr ago allows the maintenance of an existing ice sheet, but hardly glaciates an ice free Scandinavia (not shown). Second, 90 kyr BP AGCM simulations were performed with orbital parameters for 90 kyr ago (Krinner et al.,

## Modelling the Early Weichselian Eurasian Ice Sheets

V. Peyaud et al.

Title Page

Abstract

Introduction

Conclusions

References

Tables

Figures

◀

▶

◀

▶

Back

Close

Full Screen / Esc

Printer-friendly Version

Interactive Discussion



---

**Modelling the Early Weichselian Eurasian Ice Sheets**V. Peyaud et al.

---

[Title Page](#)[Abstract](#)[Introduction](#)[Conclusions](#)[References](#)[Tables](#)[Figures](#)[⏪](#)[⏩](#)[◀](#)[▶](#)[Back](#)[Close](#)[Full Screen / Esc](#)[Printer-friendly Version](#)[Interactive Discussion](#)

2004). However, summer insolation did not reach its minimum at 90, but at 95 kyr BP. To estimate the influence of summer insolation and correct the 95 kyr BP snapshot, we used the insolation sensitivity found in the PMIP experiments (Paleoclimate Model Intercomparison Project). In the framework of PMIP, AGCMs reconstructed climatic conditions at several time periods, and in particular at 6 kyr BP and for the present. The 6 ka conditions being similar to present except for insolation, we compared simulations performed by 12 selected models participating in PMIP. In average we found that summer temperatures in the northern Eurasian continent between 60° and 70° North and 15° and 60° East are 1.45°C higher at 6 ka compared to present. Given the summer insolation anomaly of 27 W m<sup>-2</sup> at 6 ky BP, we infer the influence of summer insolation on surface temperature to be 5.5×10<sup>-2</sup> kW<sup>-1</sup> m<sup>2</sup> in northern Eurasia. Using this result, we reconstruct the coldest climate of 95 ka by decreasing AGCM 90 ka summer temperatures by 1.5°C.

Oceans are also expected to influence the Eurasian ice sheet and the ice shelves. Heat exchanges melt the base of the floating ice and the sea level controls the floatation criterion and the grounding line position. In our simulations sea level evolution is given by Shackleton et al. (1990). The basal melting under Eurasian ice-shelves is our main unknown. We decided to impose a homogeneous basal melting which varies from 2.0 m a<sup>-1</sup> to 0.2 m a<sup>-1</sup> following the glacial index. In deep sea regions (<-450 m), very high basal melting (8.0 m a<sup>-1</sup>) prevents ice shelf development and is justified by high heat exchanges with the deep ocean.

## 2.4 Experiments

We performed 3 experiments. The first used the AGCM glacial climate without lakes (NL); the second used ACGM climate with lakes (LA). In the LA experiment, the floatation is level is spacially variable. When ice dam existed (from 95 to 87 ky BP, see below), we set the floatation level on the lake side to the observed lake altitude. According to

Mangerud et al. (2004), the West Siberian Lake surface was around 60 m a.s.l., ice-dammed lakes in Pechora Low land (Lake Komi) and in the White Sea region were linked through a pass, and shorelines lay around 100 m above the sea level. Considering the sea level drop, the Baltic Sea was still linked with the North Sea.

5 The third experiment (MI) mixes the 2 previous experiments: we applied the no-lake (GCM-NL) climate from 105 kyr until the moment when the extension of the simulated ice sheet leads to the formation of ice-dammed lakes. At this date, we switch to glacial climate with lakes (GCM-LA). When lakes drained into Arctic ocean as a consequence of the simulated ice sheet decay, we switch back to the no-lake climate until the end of  
10 the experiment.

### 3 Results

First we present the evolution of ice sheets for the 3 experiments and the differences induced by ice-dammed lakes. Then we describe the ice sheet dynamics through the experiment MI.

#### 15 3.1 Influences of lakes

##### 3.1.1 Timing

The evolution of the ice sheets in the three experiments is drawn in the Fig. 3. The experiments present approximately a similar timing with a maximum extent at the coldest period (95 kyr BP), and a maximum volume correlated with sea level drop –  
20 which reflects the real global (eustatic) ice volume.

In both experiments NL and LA, ice appears around 100 kyr BP and expands until 94 kyr BP. In the NL ice retreats as soon as summer insolation starts to increase while the presence of ice-dammed lakes maintains a large extent. This allows ice to thicken much longer in the LA and the maximum ice sheet is 1.5 times bigger in volume. The  
25 presence of lakes also delays maximum volume and the deglaciation by 2 kyr.

## Modelling the Early Weichselian Eurasian Ice Sheets

V. Peyaud et al.

Title Page

Abstract

Introduction

Conclusions

References

Tables

Figures



Back

Close

Full Screen / Esc

Printer-friendly Version

Interactive Discussion

---

## Modelling the Early Weichselian Eurasian Ice Sheets

V. Peyaud et al.

---

Title Page

Abstract

Introduction

Conclusions

References

Tables

Figures

◀

▶

◀

▶

Back

Close

Full Screen / Esc

Printer-friendly Version

Interactive Discussion

The maximum volume is reached around 89 kyr BP in the LA experiment. Figure 4 depicts the two ice sheets (LA and NL) at that date. The ice-dammed lakes maintain a large extent of the LA ice sheet until this date. In the LA experiment, ice expands further south and the junction between Scandinavia and Barents ice sheets is stronger.

5 The ice is thicker (up to 200% in Barents Sea).

According to our simulations, lakes appears early on the Siberian plains when the passage between Novaya Zembya and Ural closes. Ice-dammed lakes in Pechora Low land (Lake Komi) and in White Sea appear when the Scandinavian and Barents ice sheets coalesce. Oppositely lakes disappears when the ice dams break. The timing of the lakes in simulations NL and LA is given in the Table 1. To perform the mixed (MI) experiment, we start as the NL because the lakes did not exist during the inception. Ice dammed lakes appears around 95 kyr BP (Table 1). We suppose that water from snow melt and rivers rapidly filled the lakes and by consequent rapidly changes the climate. Thus we switch to (GCM-LA) climate at that time. Lakes influence the climate until ice-dams recede which occurs at 87 kyr BP in the mixed experiment (as in LA). We expect the MI experiment to be the most realistic and enlight the dynamical effect induced by lake appearance and disappearance.

### 3.1.2 MI experiment

In the MI experiment (Fig. 3), lakes begin to influence the climate at 95 kr. In response to this switch, ice extends immediately and the volume rises at the same rate as in the LA experiment. During the deglaciation, when lakes are switched off, ice decay seems unaffected: the volume and extend are similar in the MI and the LA experiments. We conclude that lakes enhance the ice sheet inception and build-up. However, ice sheet decays is sensitive to the ice sheet volume and a huge ice sheet delays the deglaciation but the higher ablation (after lakes are switched off) has no sensitive impact.

25 We tested the impact of floating of the ice over the lakes (lake surface is set at 60 m a.s.l. on Siberian plain and 100 m a.s.l. for Lake Komi and the White Sea. This does not influence the ice sheet because it is too thick to float. Only high basal melting

(>2 m a<sup>-1</sup>) at the grounding line has a significant effect (northward retreat of the ice). Nevertheless observed calving rates in freshwater are usually low (Vieli et al., 2001), thus we did not investigate this any further.

### 3.2 Description of the dynamics of ice in the mixed (MI) experiment

As presented in Fig. 6, inception occurs in the Arctic archipelago, on highlands (Scotland, Scandinavia, Putorana) and over the Siberian plain (Fig. 6a). By 98 kyr BP fringing ice shelves around Novaya Zembyla and Siberia join on Kara Sea (Fig. 6b). Soon after, ice grounds in this area that will become the center of mass of the future ice sheet (Fig. 6c). Between 97 000 and 96 500 years BP (Figs. 6c–e), while basal melting below the ice shelves decreases and surface mass balance increases, unconfined ice shelves spread over from the coast and islands. This floating ice encounters islands and grounds on shallows.

The resulting longitudinal stresses backforce slow down the upstream ice and enhance ice shelf thickening. When ice covers the Barents Sea (i.e. ice shelves from Spitsberg, Franz Joseph Land and Novaya Zembyla coalesce) the buttressing effect confines the whole area, and ice grounds between 96 and 95 kyr BP (Figs. 6e–f). Maximum extent is reached after 95 kyr BP and remains stable during several thousands of years. The ice sheets reaches its maximum volume around 89 ka ago (Fig. 4a). The velocity field presented in Fig. 5 shows slow ice in Siberia, where the bed stays frozen. Enhanced by high accumulation, an elevated ice ridge appears on the south of the ice sheet. In areas where ice shelves grounded, velocities stay high and ice streams appears in the topographic troughs. A particularly long ice stream develops on Kara sea, along Novaya Zemlya down to St. Anna trough. This stream causes a saddle that separates two domes on the ice sheet ridge. The high discharge rates of the Barents Sea leads to a very flat ice sheet. Its thickness never exceeds 2000 m.

During the deglaciation, presented in Fig. 7, the Barents and Scandinavian ice sheets split at 88 ka BP. The ice recedes to the North and the East. More stable

## Modelling the Early Weichselian Eurasian Ice Sheets

V. Peyaud et al.

Title Page

Abstract

Introduction

Conclusions

References

Tables

Figures

◀

▶

◀

▶

Back

Close

Full Screen / Esc

Printer-friendly Version

Interactive Discussion

features are the Kara ice sheet and another ice sheet North of Barents Sea leaning on Spitsberg, Franz Joseph Land and Novaya Zemlya (Fig. 7b). This last feature disintegrates within two hundred years between 85 and 84.8 kyr BP (Figs. 7c–f). As ablation increases, ice thins to its flotation limit. When ice starts to float, high basal melting appears and the ice shelf therefore thins more rapidly. Furthermore, longitudinal stresses decrease and the upstream grounded ice accelerates. The snapshot at 85 ky BP (Fig. 7d) captures the moment when bulk of the ice sheet start to float, the ice is unconfined and velocities rises up to several thousands of meter per year. After this catastrophic break off, ice is constrained within Arctic islands where it slowly recedes to ice free conditions (Fig. 7f).

## 4 Discussion

### 4.1 Temporal evolution of the climate forcing

The temporal evolution of the climate forcing is a critical input for the ice sheet model. Unfortunately, AGCM climate forcing was only available for 90 kyr BP and for the present. This led us to reconstruct intermediate climate states as a function of the available baseline climates and of orbitally driven summer insolation anomalies. To a certain degree, our forcing method thus allows to test the hypothesis that the Early Weiselian glacial event is driven by orbital summer insolation variations. As the ice sheet model does indeed reproduce the ice sheet growth and decay in a fairly plausible manner, this seems to confirm the assumption of a major role of the orbital forcing. However, our forcing method neglects the fact that the season lengths also depend on the orbital parameters (Joussaume and Braconnot, 1997); Precessional orbital variations (the 20 kyr band) are such that a summer insolation maximum is coincident with a minimum of the length of that season. Here we only assumed changes of summer (JJA) temperature according the summer solstice insolation ( $60^{\circ}$  N). It would be preferable take into account variations of season lengths in calculating the monthly and thus

## Modelling the Early Weichselian Eurasian Ice Sheets

V. Peyaud et al.

Title Page

Abstract

Introduction

Conclusions

References

Tables

Figures

◀

▶

◀

▶

Back

Close

Full Screen / Esc

Printer-friendly Version

Interactive Discussion

annual surface mass balance.

## 4.2 Ice sheet extent

Experiments MI and LA yield a huge ice sheet, in agreement with the QUEEN reconstruction (Svendsen et al., 2004). The difference between simulations LA and NL is mainly due to reduced ablation on the southern flanks of the ice sheets. Precipitation is slightly higher in NL, but this effect is negligible compared to the ablation increase. In our simulations, we have chosen the melting coefficients such that the GCM-simulated melt rates are reproduced in the ice sheet model simulations. These coefficients are higher than those usually taken in comparable modeling exercises (Reeh, 1991) and limit the southward extension of the ice sheet. In particular, the modelled ice sheet does not reach the southern limit of the QUEEN reconstruction. However, the GCM simulations with and without lakes differ particularly strongly over and in the immediate vicinity of the ice-dammed lakes (Fig. 3). This means that the ice sheet regions where the simulated climates in the two GCM simulations differ most strongly are actually not ice-covered in the GRISLI simulations. Therefore the difference between the two climatic states from the GCM does not unfold its full impact in the ice sheet model simulations.

Our results thus confirm that ice-dammed lakes do have an influence on ice sheets that should not be neglected. However, the amplitude of the impact of the lakes is very sensitive to the baseline mass balance.

## 4.3 Simulated and observed isostatic responses

The degree of realism of our model results can be assessed by analysing the modelled isostatic response. Mangerud et al. (2004) observed that the shorelines of the lake Komi range from 90 m above the present sea level (a.s.l.) in the south to 110 m a.s.l. in the north, and are at about 60 m a.s.l. in West Siberia. In our experiments, the ice sheets thicken until 89 kyr BP, and the isostatic depletion reaches 200 m on the

CPD

3, 221–247, 2007

### Modelling the Early Weichselian Eurasian Ice Sheets

V. Peyaud et al.

Title Page

Abstract

Introduction

Conclusions

References

Tables

Figures

◀

▶

◀

▶

Back

Close

Full Screen / Esc

Printer-friendly Version

Interactive Discussion

EGU

southern limit in experiment LA. Regionally, close to the ice-dammed lakes, the isostatic depletion is such that the continental surface drops below sea level (see Fig. 4). This overestimate of the isostatic depletion suggests that the simulated Siberian ice sheet is too massive. The probable reason is that the LMDZ4 AGCM overestimates the precipitation in this region (as in the control AGCM simulation labelled P).

#### 4.4 Lake ages

Mangerud et al. (2004) dated Lake Komi on the Pechora Low Land between 90 and 80 ky BP, with ages subject to large uncertainties. Our reconstruction suggests that the lakes existed from 95 to 87 ky BP (see Table 1). Simulations LA and NL give similar durations of 8000 to 9000 years. The simulated ice dam linking the Barents Sea ice sheet and the Scandinavian ice sheet is small, and possibly existed only during a few thousand years. Therefore, the postulated White Sea Lake might have broken this dam and might have drained across it through subglacial drainage, similar to what was suggested for Lake Agassiz (Clarke et al., 2004). Moreover, the “QUEEN-team” working in the white sea basin observed only rare material deposit that confirm the existence of a lake at that date (Houmark-Nielse et al., 2001). The lack of deposit may be due to a shorter lake existence, as suggested by our simulations.

#### 4.5 Deglaciation and fresh water fluxes to the oceans

During the deglaciation, high calving rates and freshwater release due to the sudden drainage of the ice dammed lakes drainage are supposed, in accordance with marine sediment deposits (Spielhagen et al., 1997). Our simulations suggest a delay of 1000 years between drainage of Lake Komi and that of the West Siberian lake. Such freshwater discharges can in principle influence oceanic circulation, but the location of the freshwater input (either the Barents Sea, that is the North Atlantic, or the Arctic Ocean) is critical as it determines the climatic impact of the event. Figure 7b clearly suggests that the White Sea Lake and Lake Komi drained into the Barents Sea. The

## Modelling the Early Weichselian Eurasian Ice Sheets

V. Peyaud et al.

Title Page

Abstract

Introduction

Conclusions

References

Tables

Figures

◀

▶

◀

▶

Back

Close

Full Screen / Esc

Printer-friendly Version

Interactive Discussion

larger West Siberian Lake might have drained either into the Barents Sea or the Arctic Ocean. In the MI experiment, two ice dams persist during the ice sheet retreat in Siberia (Fig. 7c). The first dam joins Novaya Zemlya to the Taimir Peninsula, the second links Novaya Zemlya to the Urals. During ice retreat, two possible outlets appear between the Putorana and Taimir and between Ural and Kara sea (Figs. 7b, c). Analyse of the water threshold (not shown) might suggest that the lake drained into the Barents Sea through this latter passage. Finally, it is worth noting that in our simulations, final volume of the lakes before the outburst might have been much larger than what was inferred by Mangerud et al. (2004) because as the ice sheet retreats, the lakes expand.

#### 4.6 Ice sheet inception in Siberia

Our reconstructions situate the ice sheet inception on the Siberian emerged land, rather than on Arctic archipelagos. The low temperatures and high precipitations (in experiment A) lead to a high dome (thicker than the observed isostatic depletion suggests, as discussed above). The reason is that before 97 ky (in exp MI, see Fig. 6), grounded ice can extend freely on emerged land of the Kara Sea, while ice is restricted to the islands by high basal melting under fringing ice shelves.

The inception of a marine ice sheet is limited by oceanic conditions. Some authors (e.g., Kenneally and Hughes, 2002) argue that calving is too important to allow ice caps to advance across seas or interisland channels and coalesce. They proposed that marine inception is due to sea ice thickening and formation of fast ice in which icebergs are caught (Marine Transgression hypotheses). Our simulations show that with a true ice shelf model this hypothesis is not necessary. Furthermore, sensitivity experiments (not shown) have demonstrated that the existence of an ice shelf is indeed necessary to explain the glaciation of Kara and Barents Seas.

Since GRISLI ISM simulations of the West Antarctic ice shelves reproduce well the observed ice shelves, we are confident in the present reconstruction.

## Modelling the Early Weichselian Eurasian Ice Sheets

V. Peyaud et al.

Title Page

Abstract

Introduction

Conclusions

References

Tables

Figures

◀

▶

◀

▶

Back

Close

Full Screen / Esc

Printer-friendly Version

Interactive Discussion



## 5 Conclusion

We reconstructed the Eurasian ice sheet through the early Weichselian (90 kyr ago). We performed three simulations using AGCM climate with and without the influence of ice-dammed lakes, applying the reconstructed climate to the GRISLI ice sheet model.

5 The simulation NL did not include lakes, while LA did. From these two simulations we inferred that ice-dammed lakes existed from 95 to 87 kyr BP on the south of the ice sheet. The climate forcing in the third ISM simulation (MI) was initially an adapted AGCM climate without lakes. At the point where the reconstructed ice sheet was large enough to dam northward flowing rivers, the forcing was switched to an AGCM climate taking into account the climatic impact of the proglacial lakes. After the simulated  
10 disappearance of the ice dams, we switched back to the initial climate forcing without lakes. This experiment constructed and disintegrated ice sheets in accordance with geomorphological evidences. the simulated ice streams are very efficient in draining the ice sheet, especially in the Barents and Kara sea. Lakes have a great influence during inception. Maximum ice volume is 50% higher in LA compared to simulation  
15 NL, and deglaciation is delayed by 2 kyr. Moreover the impact of lakes is probably underestimated because our ice sheet does not reach the shoreline of the lakes where the GCMs show the largest difference. We also studied the impact of ice shelves on the Barents ice sheet. Inception occurs by thickening of a large ice shelf that is slowed down by islands and ice rises. This seems reasonable. Deglaciation occurs in a few  
20 centuries when the surface mass balance decreases (as a consequence of orbitally-induced summer surface temperature variations) and the ice thickness consequently decreases below the floating level. The ice then begins to float and disintegrates immediately. The modelled deglaciation is characterized by high calving rates and the freshwater release due to the drainage of the ice dammed lakes in accordance with observations from marine sediments.

This study confirms that and illustrates how ice-dammed lakes influence adjacent ice sheets. It would be interesting to investigate in more detail the realism of our re-

CPD

3, 221–247, 2007

### Modelling the Early Weichselian Eurasian Ice Sheets

V. Peyaud et al.

Title Page

Abstract

Introduction

Conclusions

References

Tables

Figures

◀

▶

◀

▶

Back

Close

Full Screen / Esc

Printer-friendly Version

Interactive Discussion

EGU

construction with isostatic considerations, and to investigate the volume and drainage pattern of the ice sheet at higher model resolution.

*Acknowledgements.* The simulations were carried out of the MIRAGE computer platform in Grenoble. We thank N. Shapiro for providing us with his geothermal heat flux map for the northern hemisphere. The graphics were produced using the GMT software (Wessel and Smith, 1991). This work was supported by the MOTIF program.

## References

- Charbit, S., Ritz, C., and Ramstein, G.: Simulations of northern hemisphere ice-sheet retreat: sensitivity to physical mechanisms involved during the Last Deglaciation, *Quat. Sci. Rev.*, 21, 243–265, 2002. 226
- Clarke, G. K., Leverington, D., Teller, J., and Dyke, A.: Paleohydraulics of the last outburst flood from glacial Lake Agassiz and the 8200 BP cold event, *Quat. Sci. Rev.*, 23, 399–407, 2004. 234
- Fortuin, J. P. F. and Oerlemans, J.: Parametrisation of the annual surface temperature and mass balance of Antarctica, *Ann. Glaciol.*, 14, 78–84, 1990. 226
- Houmark-Nielse, M., Demidov, I., Funder, S., Grösfjeld, K., Kjær, K. H., Larsen, E., Lavrova, N., Lyså, A., and Nielsen, J. K.: Early and Middle Waldaian glaciations, ice dammed lakes and periglacial interstadials in the northwest Russia: new evidence from Pyoza River area, *Global Planet. Change*, 31, 215–237, 2001. 234
- Hutter, K.: *Theoretical Glaciology*, D. Reidel, Norwell, Mass., 1983. 223
- Jackson, C. S. and Broccoli, A. J.: Orbital forcing of Arctic climate: mechanisms of climate response and implication for continental glaciation, *Clim. Dyn.*, 21, 539–557, 2003. 222
- Joussaume, S. and Braconnot, P.: Sensitivity of paleoclimate simulation results to season definitions, *J. Geophys. Res.*, 102, 1943–1956, 1997. 232
- Kenneally, J. and Hughes, T.: The calving constraints on inception of Quaternary ice sheets, *Quat. Int.*, 95–96, 31 943–31 964, 2002. 235
- Krinner, G. and Genthon, C.: Altitude dependance of the ice sheet surface climate, *Geophys. Res. Lett.*, 26, 2227–2230, 1999. 226
- Krinner, G., Mangerud, J., Jakobsson, M., Crucifix, M., Ritz, C., and Svendsen, J.: Enhanced

## Modelling the Early Weichselian Eurasian Ice Sheets

V. Peyaud et al.

Title Page

Abstract

Introduction

Conclusions

References

Tables

Figures

◀

▶

◀

▶

Back

Close

Full Screen / Esc

Printer-friendly Version

Interactive Discussion

---

**Modelling the Early  
Weichselian Eurasian  
Ice Sheets**

---

V. Peyaud et al.

Title Page

Abstract

Introduction

Conclusions

References

Tables

Figures

◀

▶

◀

▶

Back

Close

Full Screen / Esc

Printer-friendly Version

Interactive Discussion

ice sheet growth in Eurasia owing to adjacent ice-dammed lakes, *Nature*, 427, 429–432, 2004. [223](#), [225](#), [227](#)

Krinner, G., Magand, O., Simmonds, I., Genthon, C., and Dufresne, J.-L.: Simulated Antarctic precipitation and surface mass balance at the end of the twentieth and twenty-first centuries, *Clim. Dyn.*, 28, 215–230, doi:10.1007/s00382-006-0177-x, 2007. [227](#)

Le Meur, E. and Huybrechts, P.: A comparison of the different ways of dealing with isostasy: examples from modelling the Antarctic ice sheet during the last glacial cycle., *Ann. Glaciol.*, 23, 309–317, 1996. [225](#)

MacAyeal, D. R.: Large Scale ice flow over a viscous basal Sediment: Theory and Application to Ice Stream B, Antarctica, *J. Geophys. Res.*, 94, 4071–4087, 1989. [223](#)

Mangerud, M., Jakobsson, M., Alexanderson, H., Astakhov, V., Clarke, G. K. C., Henriksen, M., Hjort, C., Krinner, G., Lunkka, J.-P., Mler, P., Muray, A., Nikolskaya, O., Saarnisto, M., and Svendsen, J. I.: Ice-dammed lakes and rerouting of the drainage of northern Eurasia during the Last Glaciation, *Quat. Sci. Rev.*, 23, 1331–1332, 2004. [229](#), [233](#), [234](#), [235](#)

Morland, L.: Thermo-mechanical balances of ice sheet flow, *Geophys. Astrophys. Fluid Dyn.*, 29, 237–266, 1984. [223](#)

Oppenheimer, M.: Global warming and the stability of the West Antarctic Ice Sheet, *Nature*, 393, 325–332, 1998. [222](#)

Paillard, D., Labeyrie, L., and Yiou, P.: Macintosh Program Performs Time-Series Analysis, in: *EOS Transactions*, vol. 77, p. 379, AGU, 1996. [226](#)

Reeh, N.: Parametrization of melt rate and surface temperature on the Greenland ice-sheet, *Polarforschung*, 59, 113–128, 1991. [226](#), [233](#)

Ritz, C., Rommelaere, V., and Dumas, C.: Modeling the evolution of Antarctic ice sheet over the last 420,000 years: Implications for altitude changes in the Vostok region, *J. Geophys. Res.*, 106, 31 943–31 964, 2001. [224](#)

Rommelaere, V. and Ritz, C.: A thermomechanical model of ice-shelf flow, *Ann. Glaciol.*, 23, 13–20, 1996. [224](#)

Ruddiman, W. F. and McIntyre, A.: Oceanic Mechanisms for Amplification of the 23,000-Year Ice-Volume Cycle, *Science*, 212, 617–627, 1981. [222](#)

Shackleton, N., Berger, A., and Peltier, W.: An alternative astronomical calibration of the lower Pleistocene timescale based on ODP Site 677, *Trans. R. Soc. Edinb. Earth sci.*, 81, 251–261, 1990. [228](#), [243](#)

Shapiro, N. M. and Ritzwoller, M. H.: Inferring surface heat flux distributions guided by a global

seismic model: particular application to Antarctica, *Earth Planet. Sci. Lett.*, 223, 213–224, 2004. [225](#)

Siegert, M., Dowdeswell, J. A., Hald, M., and Svendsen, J.-I.: Modelling the Eurasian Ice Sheet through a full (Weichselian) glacial cycle, *Global Planet. Change*, 31, 367–385, 2001. [223](#), [227](#)

Spielhagen, R., Bonani, G., Eisenhauer, A., Frank, M., Frederichs, T., Kassens, H., Kubik, P., Mangini, A., Norgaard-Pedersen, N., Nowaczyk, N., Schaper, S., Stein, R., Thiede, J., Tiedemann, R., and Wahsner, M.: Arctic Ocean evidence for Late Quaternary initiation of northern Eurasian ice sheets, *Geology*, 25, 783–786, 1997. [234](#)

Svendsen, J. I., Alexanderson, H., Astakhov, V., Demidov, I., Dowdeswell, J., Funder, S., Gataullin, V., Henriksen, M., Hjort, C., Houmark-Nielsen, M., Hubberten, H., Ingiólfsson, Ó., Jakobsson, M., Kjær, K., Larsen, E., Lokrantz, H., Lunkka, J.-P., Lyså, A., Mangerud, J., Matiouchkov, A., Murray, A., Möller, P., Niessen, F., Nikolskaya, O., Polyak, L., Saarnisto, M., Siegert, C., Siegert, M. J., Spielhagen, R. S., and Stein, R.: Late Quaternary ice sheet history of Northern Eurasia, *Quat. Sci. Rev.*, 23, 1229–1271, 2004. [222](#), [224](#), [233](#)

Vieli, A., Funk, M., and Blatter, H.: Flow dynamics of tidewater glaciers: a numerical modelling approach, *J. Glaciol.*, 47, 595–606, 2001. [231](#)

Wessel, P. and Smith, W. H. F.: Free software helps map and display data, *EOS Trans. AGU*, 72, 441, 1991. [237](#)

Zweck, C. and Huybrechts, P.: Modeling of the northern hemisphere ice sheets during the last glacial cycle and glaciological sensitivity, *J. Geophys. Res.*, 110, L18402, doi:10.1029/2004JD005489, 2005. [223](#)

CPD

3, 221–247, 2007

## Modelling the Early Weichselian Eurasian Ice Sheets

V. Peyaud et al.

Title Page

Abstract

Introduction

Conclusions

References

Tables

Figures

◀

▶

◀

▶

Back

Close

Full Screen / Esc

Printer-friendly Version

Interactive Discussion

EGU

## Modelling the Early Weichselian Eurasian Ice Sheets

V. Peyaud et al.

**Table 1.** Possible timing of ice-dammed lakes in experiment NL and LA. These date are obtained by visual interpretation of ice-dam formation between Ural and Novaya Zemlya for West Siberian Lakes, and between Barents ice sheet and Kola Penicula for the White Sea.

Experiment	NL	LA
Siberian Lakes	96–97 to 88.6 ky BP	97–96 to 87.5 ky BP
White Sea	96 to 87 ky BP	95.4 to 86.5 ky BP

Title Page

Abstract

Introduction

Conclusions

References

Tables

Figures

◀

▶

◀

▶

Back

Close

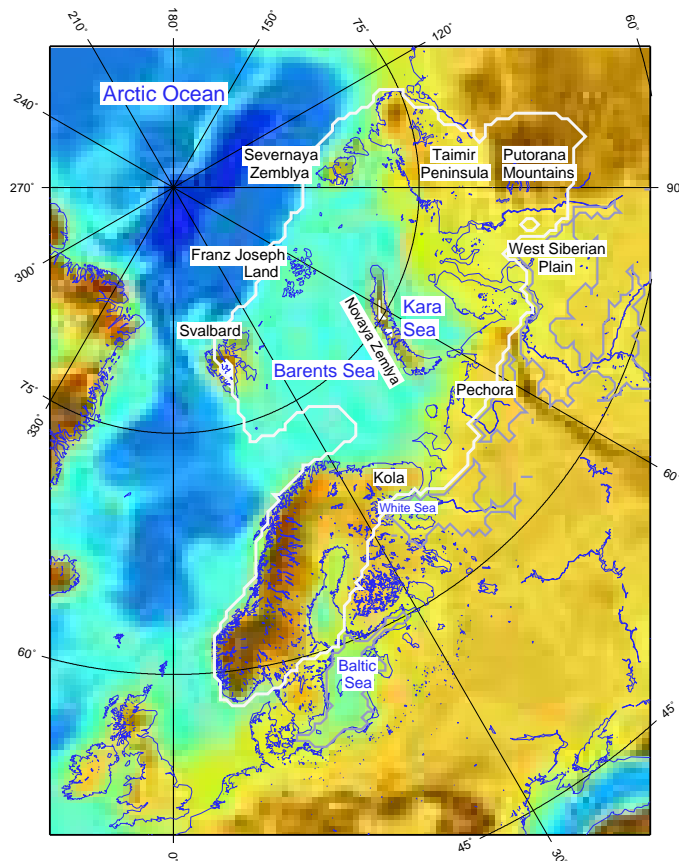
Full Screen / Esc

Printer-friendly Version

Interactive Discussion

## Modelling the Early Weichselian Eurasian Ice Sheets

V. Peyaud et al.



**Fig. 1.** Site map with names used in the text. The limit of the QUEEN ice sheet reconstruction is pictured in white, The extent of ice dammed lakes with a thick blue line. Present day coast and rivers are pictured with a blue thin line. The coast line, with a sea level drop of  $-50$  m, is depicted in red.

Title Page

Abstract

Introduction

Conclusions

References

Tables

Figures

◀

▶

◀

▶

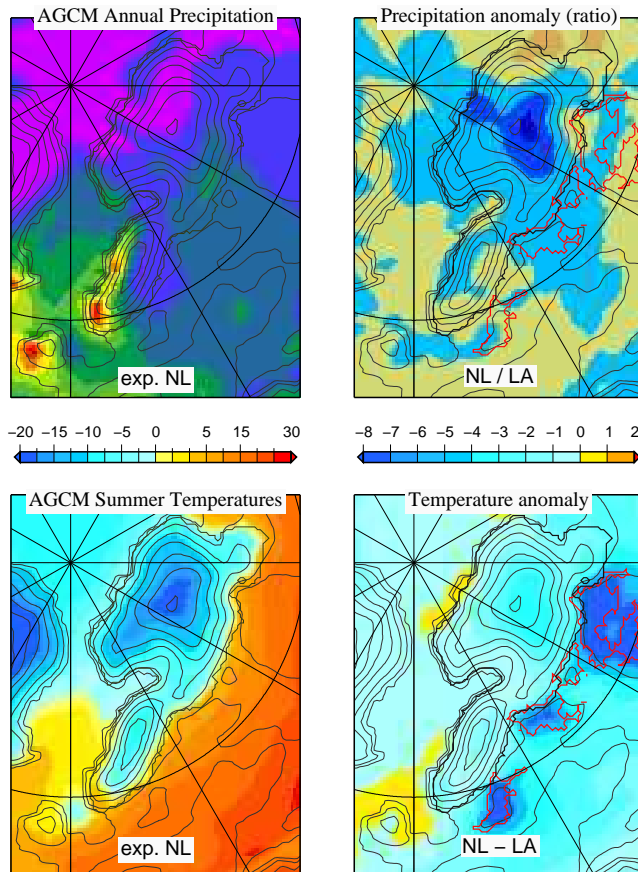
Back

Close

Full Screen / Esc

Printer-friendly Version

Interactive Discussion



**Fig. 2.** AGCM climat at 90 ka without lakes (GCM-NL) On the left: on top: precipitation ( $\text{m a}^{-1}$ ) and summer temperature in  $^{\circ}\text{C}$  (average from June July and August,) on bottom. On the right: anomaly between climate for (GCM-NL) and (GCM-LA) reflecting the influence of the lake: ratio of precipitation and temperature differences. The QUEEN ice sheet and lake extent are depicted with a black and red line.

**Modelling the Early Weichselian Eurasian Ice Sheets**

V. Peyaud et al.

Title Page

Abstract Introduction

Conclusions References

Tables Figures

◀ ▶

◀ ▶

Back Close

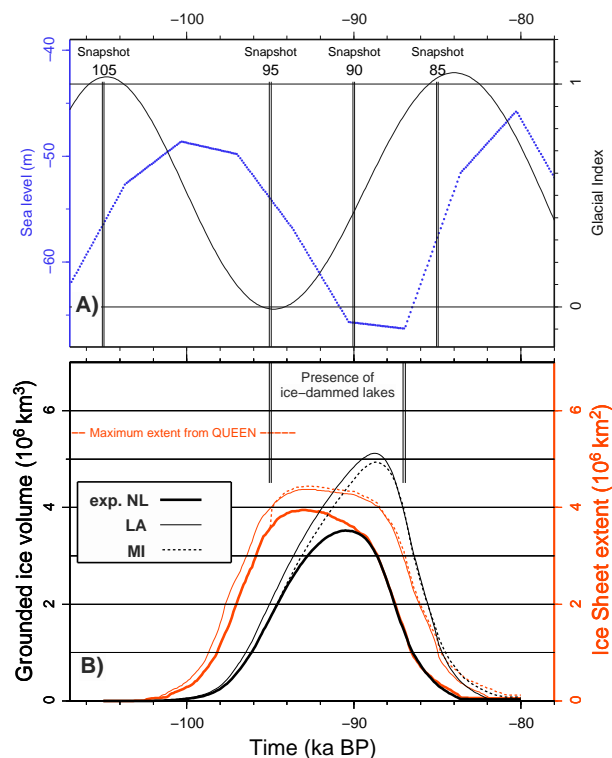
Full Screen / Esc

Printer-friendly Version

Interactive Discussion

## Modelling the Early Weichselian Eurasian Ice Sheets

V. Peyaud et al.



**Fig. 3.** Forcing method: 4 climatic anomaly snapshots adapted from the AGCM are applied at 105, 95, 90 and 85 ky BP. The climatic anomaly applied at the ISM surface evolves between the snapshots according to a glacial index (summer insolation at  $65^\circ \text{ N}$ ). Climate is colder when glacial index is 0. Sealevel variation are plotted with a blue dotted line (Shackleton et al., 1990). **(b)** Variation with time of ice sheet volume (black lines) and extent (orange lines) for the 3 experiments.

Title Page

Abstract

Introduction

Conclusions

References

Tables

Figures

◀

▶

◀

▶

Back

Close

Full Screen / Esc

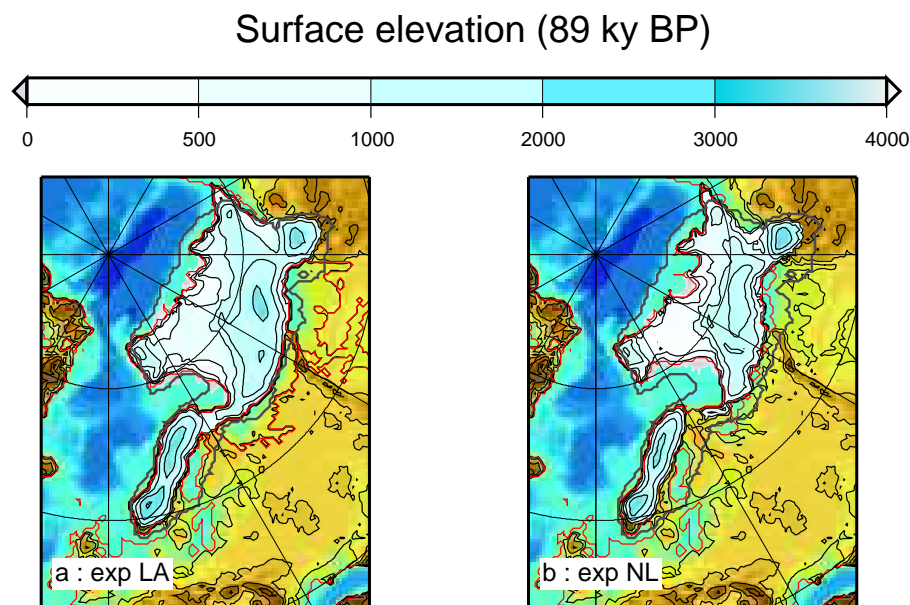
Printer-friendly Version

Interactive Discussion



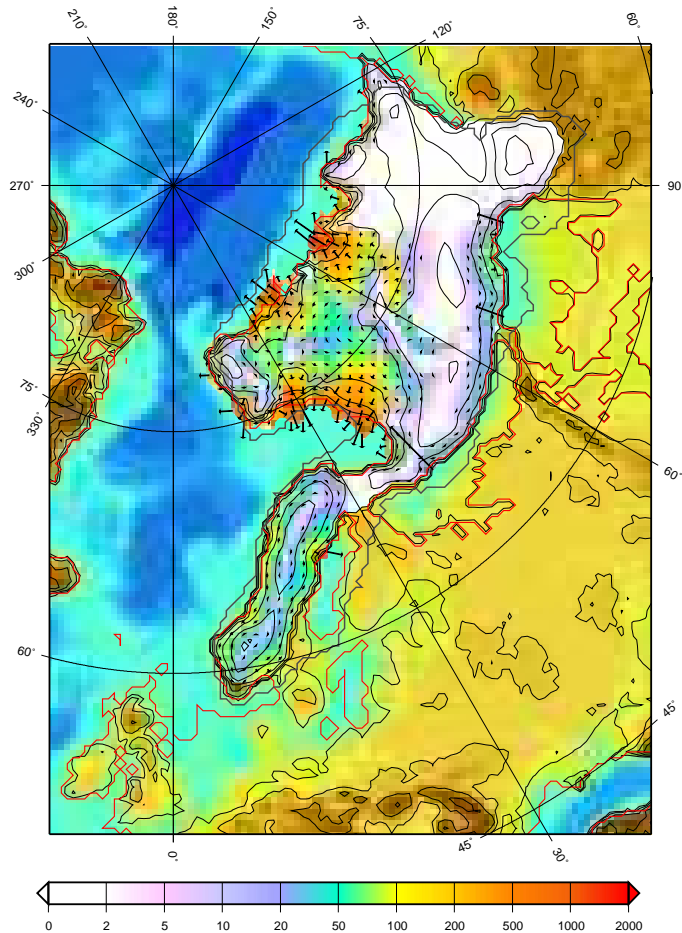
## Modelling the Early Weichselian Eurasian Ice Sheets

V. Peyaud et al.



**Fig. 4.** (a) Reconstructed ice sheet for the LA and NL experiments. Snapshot at 89 kyr BP, close to the maximum ice volume.

[Title Page](#)[Abstract](#)[Introduction](#)[Conclusions](#)[References](#)[Tables](#)[Figures](#)[◀](#)[▶](#)[◀](#)[▶](#)[Back](#)[Close](#)[Full Screen / Esc](#)[Printer-friendly Version](#)[Interactive Discussion](#)



**Fig. 5.** Horizontal ice velocity of experiment MI 89 kyr BP, close to the maximum ice volume. Kara sea is covered by a high slow moving ice dome. Barents Sea presents large ice streams in the topographic troughs.

## Modelling the Early Weichselian Eurasian Ice Sheets

V. Peyaud et al.

Title Page

Abstract

Introduction

Conclusions

References

Tables

Figures

◀

▶

◀

▶

Back

Close

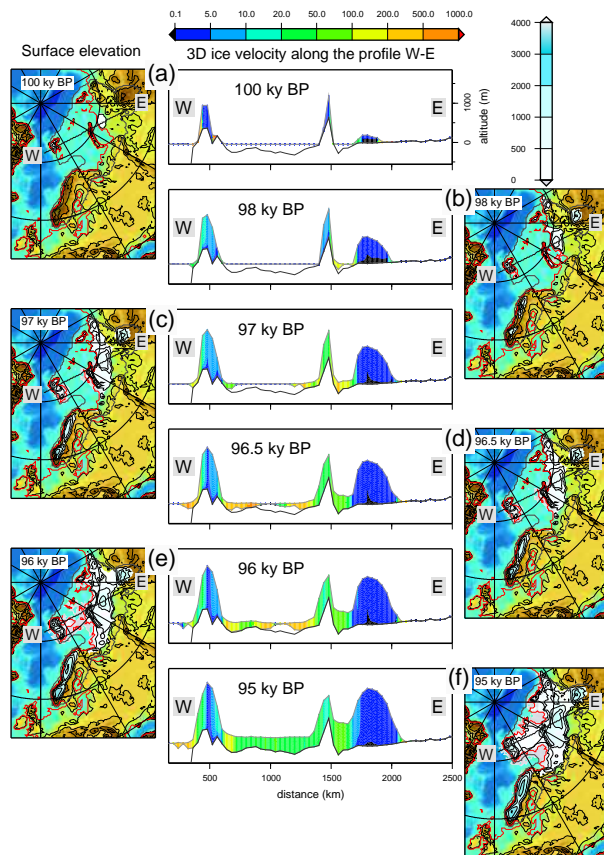
Full Screen / Esc

Printer-friendly Version

Interactive Discussion

## Modelling the Early Weichselian Eurasian Ice Sheets

V. Peyaud et al.



**Fig. 6.** 6 snapshots during the MI inception. At each time, ice sheet surface elevation and ice velocity along the profile W-E are presented (central boxes). Grounding line is pictured in red, ice shelves surface is in grey (elevation <0 m). These snapshots focus on the role of the floating part (ice shelves surface elevation in grey).

Title Page

Abstract

Introduction

Conclusions

References

Tables

Figures

◀

▶

◀

▶

Back

Close

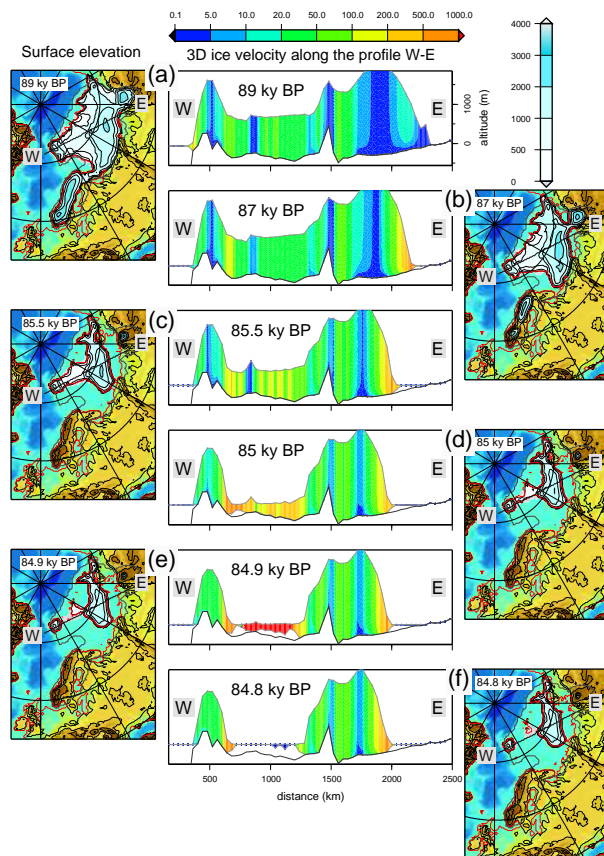
Full Screen / Esc

Printer-friendly Version

Interactive Discussion

## Modelling the Early Weichselian Eurasian Ice Sheets

V. Peyaud et al.



**Fig. 7.** Snapshots during the deglaciation in the MI experiments. At each time ice sheet surface elevation and ice velocity along the profile are presented. The Barents ice sheet break off occurs within a few centuries.

Title Page

Abstract

Introduction

Conclusions

References

Tables

Figures

◀

▶

◀

▶

Back

Close

Full Screen / Esc

Printer-friendly Version

Interactive Discussion