



HAL
open science

Mid-Holocene climate change in Europe: a data-model comparison

S. Brewer, Joel Guiot, F. Torre

► **To cite this version:**

S. Brewer, Joel Guiot, F. Torre. Mid-Holocene climate change in Europe: a data-model comparison. *Climate of the Past Discussions*, 2006, 2 (6), pp.1155-1186. hal-00330716

HAL Id: hal-00330716

<https://hal.science/hal-00330716>

Submitted on 18 Jun 2008

HAL is a multi-disciplinary open access archive for the deposit and dissemination of scientific research documents, whether they are published or not. The documents may come from teaching and research institutions in France or abroad, or from public or private research centers.

L'archive ouverte pluridisciplinaire **HAL**, est destinée au dépôt et à la diffusion de documents scientifiques de niveau recherche, publiés ou non, émanant des établissements d'enseignement et de recherche français ou étrangers, des laboratoires publics ou privés.

Climate of the Past Discussions is the access reviewed discussion forum of *Climate of the Past*

Mid-Holocene climate change in Europe: a data-model comparison

S. Brewer¹, J. Guiot¹, and F. Torre²

¹CEREGE, CNRS/Université Paul Cézanne UMR 6635, BP 80, 13545 Aix-en-Provence cedex 4, France

²IMEP/Université Paul Cézanne UMR 6635, BP 80, 13545 Aix-en-Provence cedex 4, France

Received: 17 October 2006 – Accepted: 1 November 2006 – Published: 20 November 2006

Correspondence to: S. Brewer (brewer@cerge.fr)

CPD

2, 1155–1186, 2006

Mid-Holocene climate change in Europe: a data-model comparison

S. Brewer et al.

Title Page

Abstract

Introduction

Conclusions

References

Tables

Figures

⏪

⏩

◀

▶

Back

Close

Full Screen / Esc

Printer-friendly Version

Interactive Discussion

Abstract

We present here a comparison between the outputs of a set of 25 climate models run for the mid-Holocene period (6 ka BP) with a set of palaeo-climate reconstructions from over 400 fossil pollen sequences distributed across the European continent. Three climate parameters were available (moisture availability, temperature of the coldest month and growing degree days), which were then grouped together using cluster analysis to provide regions of homogenous climate change. Each model was then investigated to see if it reproduced 1) the same directions of change and 2) the correct location of these regions. A fuzzy logic distance was used to compare the output of the model with the data, which allowed uncertainties from both the model and data to be taken into account. The initial comparison showed that the models were only capable of reproducing regions of little climate change, as the data-based reconstructions have a much larger range of changes due to their local nature. A correction for the model standard deviation was then applied to allow the comparison to proceed, and this second test shows that the majority of models simulate all the observed patterns of climatic change, although most do not simulate the observed magnitude of change. The models were then compared by distance to data, and by the amount of correction required. The majority of the models are grouped together both in distance and correction, suggesting that they are becoming more consistent. A test against a set of zero anomalies (no climate change) shows that, whilst the models are unable to reproduce the exact patterns of change, they all produce the correct direction of change for the mid-Holocene.

1 Introduction

In order to test the ability of models to simulate future climate change under changing environmental conditions, such as the atmospheric composition, they must be tested against known climatic datasets. In addition to testing against the current climate, we also wish to know how well they will simulate climate under different forcing conditions.

CPD

2, 1155–1186, 2006

Mid-Holocene climate change in Europe: a data-model comparison

S. Brewer et al.

Title Page

Abstract

Introduction

Conclusions

References

Tables

Figures

⏪

⏩

◀

▶

Back

Close

Full Screen / Esc

Printer-friendly Version

Interactive Discussion

In the Paleoclimate Modeling Intercomparison project (PMIP) (Joussaume and Taylor, 1995), climatic simulations have been made for two periods, the mid-Holocene (6 ka BP) and the Last Glacial Maximum (LGM). The mid-Holocene period (6000 yr BP) was chosen as a key period for PMIP (Harrison et al., 1998) as it is a simple modelling experiment with a clear forcing (maximum summer insolation and minimum winter insolation). The PMIP project has also focused on the production of datasets of past climate proxies that may be used to test these reconstructions, and a number of well-controlled continental scale datasets now exist (e.g. Wright Jr. et al., 1993; Prentice et al., 2000; Kim and Schneider, 2004).

A number of studies comparing model output and these proxies have been performed (e.g. Liao et al., 1994; Harrison et al., 1998; Masson et al., 1998; Prentice et al., 1998; Guiot et al., 1999; Joussaume et al., 1999; Bonfils et al., 2004). The first generation PMIP model (PMIP1) runs were tested by Masson et al. (1998) against a set of gridded climate reconstructions for the mid-Holocene in Europe (Cheddadi et al., 1997). The results showed that the majority of models showed an increase in winter temperatures, in agreement with the proxy-based values. In contrast, few models were able to reproduce the observed summer cooling and increase in moisture availability in the south of Europe. As with other precedent studies, this work was based on visual comparison between maps of climatic parameters. Visual comparisons will work well where the model-data differences are large enough to be easily identified or the resolution of different models is similar, but where the differences are smaller or model resolution more varied, it becomes harder to make an objective assessment (Guiot et al., 1999).

Other studies have used the kappa statistic to compare maps of land cover derived from simulated paleoclimatic values with pollen data (Texier et al., 1997; Harrison et al., 1998). Whilst this provides an objective measure of the difference between two images, it will also be affected by model resolution and is unable to take into account any slight geographical shifts in the simulated climate patterns. For example, a model that is able to simulate an enhancement of the monsoon but in the wrong location should

Mid-Holocene climate change in Europe: a data-model comparison

S. Brewer et al.

Title Page

Abstract

Introduction

Conclusions

References

Tables

Figures

⏪

⏩

◀

▶

Back

Close

Full Screen / Esc

Printer-friendly Version

Interactive Discussion

perform better in such a test than a model that has no enhancement. Further, Braconot and Frankignoul (1993) have shown the importance of including both model and data uncertainty in any comparative study, which cannot be included in the classical kappa statistic.

5 An improved method should therefore take into account these two features: the uncertainties of both the proxy-derived variables and model outputs and situations where patterns of climatic change are correctly simulated in the model, but shifted geographically or in time. Uncertainties may be included in data-model comparisons by using a fuzzy-logic approach, in which the values to be compared are defined as a number
10 with a membership function (Guiot et al., 1999). So when comparing the simulated and reconstructed temperature for a given point, the model temperature would be defined by the mean temperature change, and the limits of the membership function by the model standard deviation at that point. Similarly, the membership function of the proxy reconstruction may be defined by the mean reconstructed value and the estimated reconstruction errors. This method was first used by Guiot et al. (1999) for testing the PMIP1 models. The study showed that the majority of models simulated a change in climate that was closer to the changes observed in the proxy data than a scenario of no change. However, no model was able to simulate the changes in all the parameters used. The method was subsequently modified by Bonfils et al. (2004)
20 by replacing the pixel-to-pixel comparison by an approach based on clusters, allowing a multi-variate comparison to be made on the basis of coherent patterns of climate change, rather than individual points. Applied to the same set of PMIP1 model outputs, the results showed that whilst some models were able to reproduce all clusters, and therefore all the observed patterns of climate change, they concluded that the models were unable to correctly simulate changes in atmospheric circulations as the changes
25 in mid-Holocene vegetation and ocean conditions were not taken into account, and that future studies with coupled models should improve the data-model fit. More recently, the method has been adapted for the comparison of long-time series of model simulations for the last 500 years (Brewer et al., 2006). In this last study, time se-

Mid-Holocene climate change in Europe: a data-model comparison

S. Brewer et al.

[Title Page](#)[Abstract](#)[Introduction](#)[Conclusions](#)[References](#)[Tables](#)[Figures](#)[⏪](#)[⏩](#)[◀](#)[▶](#)[Back](#)[Close](#)[Full Screen / Esc](#)[Printer-friendly Version](#)[Interactive Discussion](#)

ries were available from both the model and the proxy data, adding an additional layer of complexity to the comparison, as changes in both space and time were taken into account. The results showed a good fit at low frequencies for one of the fully forced model runs, and allowed the observed changes to be interpreted in terms of changes in atmospheric circulation, notably during the Little Ice Age.

We present here an application of the method using output from the new generation of coupled PMIP models (PMIP2) for the mid-Holocene over Europe and a recent set of continental-scale climate reconstructions. The methods used follow those described by Bonfils et al. (2004), with some changes such as the inclusion of model variance in the distance estimations, and tests of the cluster stability. We first describe the clusters obtained and the climatic information contained in each one, and then compare each model to the obtained patterns. As the study includes climate models of varying levels of complexity (atmosphere-only AGCM, coupled ocean-atmosphere OAGCM, coupled ocean-atmosphere-vegetation OAVGCM), we then examine the differences between model type.

2 Methods

2.1 Study area

In order to have a relatively high density of proxy sites, the comparison are made using pollen sites and model grid cells covering the western European continent between 15° West and 50° East and between 30° and 75° North.

2.2 Proxy data

A data set of palaeo-climate reconstructions from approximately 350 fossil pollen sequences distributed across the European continent was used, taken from the recent study by Davis et al. (2003). To obtain a representative sample for the mid-Holocene,

Mid-Holocene climate change in Europe: a data-model comparison

S. Brewer et al.

Title Page

Abstract

Introduction

Conclusions

References

Tables

Figures

◀

▶

◀

▶

Back

Close

Full Screen / Esc

Printer-friendly Version

Interactive Discussion

all samples dated to 6 ka BP \pm 250 years were selected and then averaged for each site. As the aim of this comparison is to compare climatic changes, 6 ka BP anomalies were calculated by subtracting the reconstructed modern value for each site from the mid-Holocene value. A modern pollen sample was not available for all sites, and the final set of anomalies included 245 sites. We have selected the three bioclimatic parameters that are the best reconstructed from fossil pollen assemblages for the comparison (moisture availability, temperature of the coldest month and growing degree days). The distribution of the sites and the associated anomalies is shown in Fig. 1.

2.3 Models

The study includes output from a total of 25 GCM, comprised of 14 atmosphere-only GCMs, 9 coupled OAGCMs and 2 coupled OAVGCMs. Details of each model and references are given in Table 1.

2.4 K-means cluster analysis

The aim of the cluster analysis is to group together sites showing similar direction and amplitude of climate change. For this we have a matrix consisting of a set of 245 vectors (one per site) by 3 variables (one per bioclimatic variable). The k-means algorithm was used for the cluster analysis (Hartigan and Wong, 1979). From the dataset, an initial set of k vectors are chosen and the remaining data points are randomly assigned to the closest vector. So k clusters are obtained and their centroid calculated. Then each data point is moved to the closest centroid and a new partition is obtained. This is repeated until a complete pass through all the data points results in no data point moving from one cluster to another. At this point the clusters are considered stable and the clustering process ends.

The number of groups to be obtained is a priori unknown, and the choice is somewhat arbitrary. In order to select an optimum number, we use the ratio of inter to intra-group variance of an increasing number of groups, and consider a stopping rule

Mid-Holocene climate change in Europe: a data-model comparison

S. Brewer et al.

Title Page

Abstract

Introduction

Conclusions

References

Tables

Figures

⏪

⏩

◀

▶

Back

Close

Full Screen / Esc

Printer-friendly Version

Interactive Discussion

Mid-Holocene climate change in Europe: a data-model comparison

S. Brewer et al.

Title Page

Abstract

Introduction

Conclusions

References

Tables

Figures

◀

▶

◀

▶

Back

Close

Full Screen / Esc

Printer-friendly Version

Interactive Discussion

when the gain was less than 0.05, resulting in the selection of five groups. We then test for the stability of these groups by examining a) if other possible sets of centroids may be obtained; and b) the amount by which the centroids of these groups vary. The k-means algorithm was run 1000 times using a different random start each time, and the standard deviation of the value attributed to the centroid was calculated (Table 2). The standard deviation is relatively high and a closer examination shows that in 20% of the runs, a quite different configuration of groups is obtained, which have a higher intra-group variance. The standard deviation of the centroids obtained from the other 80% of the runs is substantially smaller (Table 2) and we consider that, given that the set of clusters used in the comparison belongs to this dominant solution, they may be considered as stable. The geographical distribution of the selected clusters is shown in Fig. 2. For the comparison, each cluster is represented by its centroid and its extent on each climatic axis and Fig. 3 shows the extent of each cluster in terms of these parameters.

2.5 Hagaman distance

A description of the calculation of the Hagaman distance (Bardossy and Duckstein, 1995) used is given in Brewer et al. (2006). Here, we calculate, for each model gridpoint, the Hagaman distance to each of the five selected clusters. For each climatic parameter i that used to define the clusters, we obtain two triangular numbers ($r_i, r_i - \delta_{ri}, r_i + \eta_{ri}$) and ($m_i, m_i - \delta_{mi}, m_i + \eta_{mi}$). The first represents the proxy data cluster, where r_i is the position of the triangle apex (r_i) is the cluster centroid and the limits $r_i - \delta_{ri}$ and $r_i + \eta_{ri}$ are defined by the 5th and 95th percentile, respectively. The second triangular fuzzy number represents the model climate at gridpoint i . The apex (m_i) is the mean model value at that point and the limits $m_i - \delta_{mi}$ and $m_i + \eta_{mi}$ are ± 2 standard deviations of the interannual variability of that grid-point. For comparison, the model grid-point is then assigned to the closest of the five clusters. We retain a list of the distances to the assigned cluster for the comparison step.

2.6 Comparison statistics

Three results are available from the Hagaman distance measurements for the assessment of model performance. The performance of individual models is compared on the basis of the number of clusters reproduced by each model (Tables 2 and 3), and the spatial distribution of these clusters (Fig. 4). From the list of Hagaman distances obtained, the median, 5th and 95th percentiles of the distances obtained are used for model intercomparison (Fig. 5). Finally, we use the ratio between the range of mean reconstructed and simulated anomalies to assess how well the models simulate the magnitude of change seen in the proxy data. This is calculated as the ratio of the standard deviation of the simulated anomalies to the standard deviation of reconstructed anomalies, and is given in Table 1.

Finally, the ability of the model to predict the correct direction of mid-Holocene climate changes was tested by comparing the simulated modern climate with the proxy data (i.e. using zero anomalies).

3 Results

3.1 Description of clusters

3.1.1 Cluster 1

The first cluster is found predominantly in eastern Europe, although some sites are found in the centre of the continent. The sites cover a large latitudinal gradient, but, with the exception of a few sites in Greece, are not found at very low or high latitudes. The sites are characterised by reduced GDD5 and increased moisture availability, and a mix of increased and decreased winter temperatures. The position of sites in this cluster suggests that it represents a zone of transition between the following two groups.

CPD

2, 1155–1186, 2006

Mid-Holocene climate change in Europe: a data-model comparison

S. Brewer et al.

Title Page

Abstract

Introduction

Conclusions

References

Tables

Figures

⏪

⏩

◀

▶

Back

Close

Full Screen / Esc

Printer-friendly Version

Interactive Discussion

3.1.2 Cluster 2

This cluster is characterised by marked increases in GDD5 and coldest month temperatures, and dryer conditions. The distribution is quite widespread, but is concentrated in the central and eastern regions, notably in the north-east. Such conditions are also found in a minority of Mediterranean sites.

3.1.3 Cluster 3

The third cluster has a restricted spatial distribution in which two sub-regions may be distinguished, one in the east and southeast and a second in the western part of the continent. This cluster shows, in contrast to cluster 2, decreased temperatures in both winter and summer, and increased moisture.

3.1.4 Cluster 4

With the exception of a few sites around the Black Sea and in Turkey, this cluster has a well-constrained distribution in sites close to the coast in the west of Europe. The sites are characterised by dryer conditions, together with increased GDD5 and decreased MTCO, suggesting a possible increase in seasonality.

3.1.5 Cluster 5

The final cluster has the most general geographic distribution of all groups, and is found across the continent. The cluster is comprised of sites that show little climatic change from today, with a slight cooling in winter.

3.2 Simulated clusters

The main results of the comparison exercise for the models are summarised in Tables 2 and 3. Whilst most simulations appear to show a good agreement with the proxy data,

Mid-Holocene climate change in Europe: a data-model comparison

S. Brewer et al.

Title Page

Abstract

Introduction

Conclusions

References

Tables

Figures

⏪

⏩

◀

▶

Back

Close

Full Screen / Esc

Printer-friendly Version

Interactive Discussion

with between 3 and 5 of the clusters obtained, the majority of models are dominated by the first and fifth clusters. These two clusters show the smallest amount of change from the modern climate, and this result highlights the fact that the models simulate a smaller range of climate changes than those seen in the data. The standard deviation ratios obtained show that this difference in range may be as great as one fifth of the proxy data range. As we wish to establish if a model is able to simulate the same direction and magnitude of change seen in the data, we have used these ratios to artificially inflate the model anomalies, and reassigned the model grid-points to clusters in a second comparison test. The distribution of clusters obtained is shown in Fig. 4 for both the PMIP1 and PMIP2 models. These results show that all models are able to simulate the direction of change of four of the five clusters, and 9 PMIP1 models and 7 PMIP2 models are able to simulate the direction of change of all five clusters.

3.3 Variance and distances

In order to compare between the different simulations, we have plotted each model as a function of the distances obtained between its simulated climate and the proxy clusters, and the standard deviation ratio described above (Fig. 5). On this figure, a perfect fit between the model and data would have a distance of 0 and a standard deviation ratio of 1. The open symbols show the median distance obtained with the simulated modern climate. The figure shows that the median distance for the mid-Holocene simulation is lower than the modern simulation for all models and the majority of models are grouped together, with a median distance of between 0.4 and 0.7 and a standard deviation ratio of between 0.3 and 0.5.

Mid-Holocene climate change in Europe: a data-model comparison

S. Brewer et al.

Title Page

Abstract

Introduction

Conclusions

References

Tables

Figures

⏪

⏩

◀

▶

Back

Close

Full Screen / Esc

Printer-friendly Version

Interactive Discussion

4 Discussion

4.1 Choice of proxy data

One important change in the current study from the previous mid-Holocene data-model comparison is the use of a new proxy dataset. The studies by Masson et al. (1998), Guiot et al. (1999), and Bonfils et al. (2004) all used the set of climate reconstructions of produced by Cheddadi et al. (1997). As there are a number of differences between this reconstruction, and the estimations of Davis et al. (2003) used in the current study, it is worth briefly describing them and discussing the implications for comparative studies.

The radiocarbon dates used to attribute the pollen samples to the mid-Holocene were uncalibrated in Cheddadi et al. (1997) and calibrated in Davis et al. (2003). There will therefore have been a difference in the fossil samples chosen to represent 6000 years BP. As no rapid or marked changes in mean climate or vegetation have been reported for this period, it is unlikely that this will have had a large effect on the reconstructed climate values. Both studies used a modern analogue technique to reconstruct climate, but with different constraining factors. The use of lake-levels as a constraint in the Cheddadi et al study in particular appears to have reduced the amount of noise in the reconstructions. In their paper, Davis et al. (2003) compared their mid-Holocene results with those of Cheddadi et al, and noted that both studies showed a similar spatial structure with a generally warmer north and generally cooler south. This suggests that the directions of climate change that are used to test the models have not changed, but the magnitude of those changes may be amplified in the Davis et al dataset. We have chosen to keep the dataset as it is attributed to the correct time period, but the interpretation of the standard deviation ratios presented above, must be made with care.

It should be also noted that the the anomaly maps of the reconstructed climatic variables used are quite noisy: any two neighbouring sites may have neither the same magnitude nor even the same direction of change. This results in noisy maps and only the smoothed patterns have a climatic sense. The comparison with model maps

Mid-Holocene climate change in Europe: a data-model comparison

S. Brewer et al.

Title Page

Abstract

Introduction

Conclusions

References

Tables

Figures

⏪

⏩

◀

▶

Back

Close

Full Screen / Esc

Printer-friendly Version

Interactive Discussion

will therefore tend to underestimate the model fit to the data. This problem could be removed by using interpolated data maps, but this would artificially reduce the quantification of the errors. We consider it better to work on the original reconstructed data-set.

4.2 Comparison data-model

5 The clusters obtained for each model are summarised in Table 3 and Fig. 4. These results show that whilst the same patterns of change are reproduced in nearly all the models, the spatial distribution of these changes varies widely. Three of the identified patterns of climate change (clusters 1, 4 and 5) are consistently reproduced. Cluster four was not seen in PMIP1 model CCM3, and the fifth cluster was absent from three
10 PMIP2 models (FOAM, IPSL and MRI-CGCM2.3.4nfa). These clusters are all characterised by less extreme climate changes than the two other clusters (2 and 3), and it is unsurprising that they are frequently found in the models. However, these clusters do exhibit different trends of change: cluster 1 is slightly cooler and wetter and cluster 4 is dryer with increased GDD5. The models are therefore able to simulate complex
15 patterns of change within a relatively restricted geographical area.

The second cluster is found in over the half the GCMs tested here, and in all models when an artificially expanded range of climate changes is considered, indicating that this pattern of change is always simulated, but changes are smaller than in the proxy reconstructions. The climate of this group is dryer and warmer than present, with
20 increases in both winter temperature and GDD5. The increase in GDD5 follows the increased summer insolation, a dominant forcing factor in the simulations (Joussaume et al., 1999). However, the increase in winter temperatures is more surprising, as winter insolation was lower during the mid-Holocene than today (Berger, 1978). Bonfils (2001) suggests that heating from humidity advection would have dominated the relatively
25 weak decrease in insolation at high latitudes. The final group of changes (cluster 3) was found in only one model (CCM3) in the first comparison test. The results of the second test, with inflated climate changes, show that this pattern of change is present in over half the models, but not the magnitude of change. Further, with the exception

Mid-Holocene climate change in Europe: a data-model comparison

S. Brewer et al.

Title Page

Abstract

Introduction

Conclusions

References

Tables

Figures

⏪

⏩

◀

▶

Back

Close

Full Screen / Esc

Printer-friendly Version

Interactive Discussion

of the FOAM GCM, it is consistently present in the PMIP2 simulations. This cluster represents the cooler and wetter climate of southern Europe during the mid-Holocene. Previous data-model comparison studies have shown that this climate pattern is rarely simulated for the mid-Holocene over Europe (Masson et al., 1998; Bonfils et al., 2004), as the increased summer insolation forces an increase in GDD5 (Masson et al., 1998). A decrease in growing season length and intensity may, however, be controlled by a reduction in winter temperatures and increased summer evapotranspiration (Bonfils, 2001). The results of the tests presented here suggest that, as with the second cluster, the models are able to simulate this pattern of climate changes, if not the magnitude of the observed changes.

A visual comparison of the spatial distribution of the proxy clusters and the simulated clusters shows marked differences between the data and models and between the different models. Whilst a rigorous comparison is difficult, as the clusters of proxy sites are rarely well defined spatially, some generalisations may be made. A number of models show the first cluster in the same location as the observed group (BMRC, CCC2.0, CSIRO, UGAMP, UIUC11, FGOALS, GISSmodelE, IPSL-CM4-V1-MR, MIROC3.2, MRI-2.3.4fa, MRI-2.3.4nfa, FOAM-oav and UBRIS-oav). There is a good overlap between the distribution of second cluster in the data and several models (CCC2.0, CCM3, GISS-IIP, UGAMP, FGOALS, UBRIS-0a and UBRIS-oav), however, the cluster is rarely simulated as far north as it occurs in the data. The third cluster is found in the south in some simulations (BMRC, CCM3, UGAMP, CCSM, IPSL-CM4-V1-MR, GISS-IIP, MIROC3.2, MRI2.3.4fa and MRI2.3.4nfa), but it is generally found further to the west than in the data. The coastal, northwestern location of cluster 4 is found in the majority of models. However, the simulated distribution is frequently more wide-spread than in the data. Finally, the wide-spread distribution of the fifth cluster, representing a pattern of little climate change is also shown in the output from CNRM, CSIRO, ECHAM3, GFDL, GISS-IIP, LMCELM4, LMCELM5, YONU, CCSM, FOAM-0a, FOAM-oav, UBRIS-HadCM3M2-0a and UBRIS-HadCM3M2-oav).

Mid-Holocene climate change in Europe: a data-model comparison

S. Brewer et al.

Title Page

Abstract

Introduction

Conclusions

References

Tables

Figures

⏪

⏩

◀

▶

Back

Close

Full Screen / Esc

Printer-friendly Version

Interactive Discussion

4.3 Comparison model-model

In order to compare the simulations between the different models, we have plotted the range of Hagan distances obtained against the ratio of anomaly standard deviations (Fig. 5). This shows that the majority of models have similar results and are grouped together, with a median distance of between 0.4 and 0.7 and a standard deviation ratio of between 0.3 and 0.5. No obvious distinction can be made between the PMIP1 and PMIP2 models, suggesting that despite the increase in model complexity, there is no clear change in simulation results. This is perhaps a little surprising, as the PMIP2 models show a better ability to reproduce the problematic cool and wet cluster 3, however models that best reproduce this cluster (e.g. IPSL-CM4-V1-MR and MIROC3.2) have less success in reproducing the warm and dry pattern (cluster 2). An exception to this is the PMIP2 model GISSmodelE, which has a gradient of GDD5 anomalies over Europe that are very similar to those observed in the data, and thus reproduces the cooler south and warmer north. Of the models that fall outside of this group, one (CCSM) has a low ratio of standard anomalies and a relatively poor fit. The changes simulated are relatively small, when compared to the other models, and the low fit may result in part from a reduced interannual variability. Three PMIP1 models are distinguished by high ratios of anomalies standard deviations (ECHAM3, CCSR1 and LMCELM4). These models show a much larger range of changes, and notably, have much higher interannual variability.

The range of Hagan distances obtained increases with the standard deviation ratio, as the possible difference between the simulated and observed values also increases. It is worth noting, however, that for two models (GISSmodelE and CCSR1), the median distance remains low, suggesting that the majority of simulated values of these models fit well to the data. In both these cases, the simulations produce geographical gradients of anomalies that match well to the observed changes in GDD5 (GISSmodelE and MTCO (CCSR1)).

Simulations were available from a flux-adjusted and non-flux-adjusted version of

Mid-Holocene climate change in Europe: a data-model comparison

S. Brewer et al.

Title Page

Abstract

Introduction

Conclusions

References

Tables

Figures

⏪

⏩

◀

▶

Back

Close

Full Screen / Esc

Printer-friendly Version

Interactive Discussion

one PMIP2 model, the coupled OA GCM from the Japanese Meteorological Research Institute (respectively MRI-CGCM2.3.4fa and MRI-CGCM2.3.4nfa). Both versions of the model have a similar median Hagaman distance, suggesting the removal of flux-adjustment does not affect the general ability of this model to simulate the mid-Holocene climate of Europe. The non-flux-adjusted version does have a much larger range of Hagaman distances, due mainly to a greater winter cooling in the north of Europe in this version of the model.

Two models were available from the PMIP2 project as coupled OA and coupled OAV versions (FOAM, UBRIS-HadCM3M2). In both cases, the inclusion of a coupled vegetation model improves the output by increasing the range of anomalies simulated, thus giving an output closer to the data values. The median Hagaman distance is improved for the FOAM model, although not for UBRIS-HadCM3M2. There is, however, no obvious difference between the coupled OAV simulations and the main group of simulations on Fig. 5.

Finally, the test against zero anomalies (ZERO, Fig. 5) shows a higher median Hagaman distance than for the mid-Holocene simulation for all models. This indicates that in all cases, the simulated change under the mid-Holocene forcing follows the same direction of change as the data, and represents an improvement over the modern climatology.

5 Conclusions

We have used climate reconstructions from a dataset of fossil pollen sites to test to ability of a group of climate models of varying complexity to simulate the changes of the mid-Holocene climate over Europe. Using three climatic parameters, five patterns of climatic changes were identified in the data, ranging from cooler and wetter than present to warmer and dryer. A fuzzy logic approach was used to assign the model simulations to these clusters, allowing the identification of the patterns that are simulated by each model, and the geographic distribution of these patterns. Two tests

Mid-Holocene climate change in Europe: a data-model comparison

S. Brewer et al.

Title Page

Abstract

Introduction

Conclusions

References

Tables

Figures

⏪

⏩

◀

▶

Back

Close

Full Screen / Esc

Printer-friendly Version

Interactive Discussion

were made, a first based directly on simulated values, to assess the magnitude of the changes shown in each model. In the second test, the simulated values were adjusted to the data, allowing a better identification of the trends of climate change.

The results show that, whilst the models are not able to simulate the magnitude of the climate changes reconstructed in the pollen, they perform well in capturing the different patterns of change, with four of the five patterns reproduced in the majority of models. Little distinction is shown between the first generation of atmosphere-only models and the newer coupled atmosphere-ocean models. In contrast, comparisons between different runs of the same model, with either different levels of complexity (FOAM, UBRIS-HadCM3M2) or removal of flux-adjustment, show improvements in the range of values reconstructed. Further, the new generation PMIP2 models reproduce more successfully the pattern of cooler and wetter climate change in southern Europe than the previous models.

Despite their low spatial resolution, the models are capable of reproducing the quite complicated directions of change observed in a relatively restricted geographical area. There remains a problem with the size of the simulated changes which are lower than those observed, although this is, in part, related to noise in the proxy reconstructions. Further, the spatial pattern of the simulated changes is frequently different from the data. In the region considered, the climatic changes for the mid-Holocene are relatively slight. Further work should apply this method to larger regions for which data are available, e.g. the northern Hemisphere or to areas where large-scale changes in the climate have been observed, e.g. the African monsoon (Joussaume et al., 1999; Braconnot et al., 2000; Bonfils et al., 2001).

Acknowledgements. We acknowledge the international modeling groups for providing their data for analysis, the Laboratoire des Sciences du Climat et de l'Environnement (LSCE) for collecting and archiving the model data, and we thank P. Braconnot for helpful discussion on the method and its application. The PMIP2/MOTIF Data Archive is supported by CEA, CNRS, the EU project MOTIF (EVK2-CT-2002-00153) and the Programme National d'Etude de la Dynamique du Climat (PNEDC). The analyses were performed using version

Mid-Holocene climate change in Europe: a data-model comparison

S. Brewer et al.

Title Page

Abstract

Introduction

Conclusions

References

Tables

Figures

⏪

⏩

◀

▶

Back

Close

Full Screen / Esc

Printer-friendly Version

Interactive Discussion

11-20-2005 of the database. More information is available on <http://www-lsce.cea.fr/pmip/> and <http://www-lsce.cea.fr/motif/>.

References

- 5 Bardossy, A. and Duckstein, L.: Fuzzy Rule-Based Modelling with Applications to Geophysical, Biological, and Engineering Systems, Boca Raton, Florida, CRC Press, 256, 1995.
- Berger, A. L.: Long-term variations of daily insolation and Quaternary climatic changes, *J. Atmos. Sci.*, 35, 2362–2367, 1978.
- Bonan, G. B.: A land surface model (LSM version 1.0) for ecological, hydrological, and atmospheric studies: technical description and user's guide, NCAR Tech, 150, 1996.
- 10 Bonfils, C.: Le moyen-Holocène: rôle de la surface continentale sur la sensibilité climatique simulée, Paris, Université Paris VI, 322, 2001.
- Bonfils, C., de Noblet-Ducoudre, N., Braconnot, P., and Joussaume, S.: Hot desert albedo and climate change: Mid-Holocene monsoon in North Africa, *J. Climate*, 17, 3724–3737, 2001.
- 15 Bonfils, C., de Noblet-Ducoudre, N., Guiot, J., and Bartlein, P.: Some mechanisms of mid-Holocene climate change in Europe, inferred from comparing PMIP models to data, *Clim. Dyn.*, 23, 79–98, 2004.
- Braconnot, P. and Frankignoul, C.: Testing model simulations of the thermocline depth variability in the tropical Atlantic from 1982 through 1984, *J. Phys. Oceanogr.*, 23, 626–647, 1993.
- 20 Braconnot, P., Joussaume, S., de Noblet, N., and Ramstein, G.: Mid-Holocene and Last Glacial Maximum African monsoon changes as simulated within the Paleoclimate Modeling Inter-comparison Project, *Global and Planetary Change*, 26, 51–66, 2000.
- Brewer, S., Alleaume, S., Guiot, J., and Nicault, A.: Historical droughts in Mediterranean regions during the last 500 years: a data/model approach, *Clim. Past Discuss.*, 2, 771–800, 2006,
- 25 <http://www.clim-past-discuss.net/2/771/2006/>.
- Cheddadi, R., Yu, G., Guiot, J., Harrison, S. P., and Prentice, I. C.: The climate of Europe 6000 years ago, *Clim. Dyn.*, 13, 1–9, 1997.
- Collins, W. D., Bitz, C. M., Blackmon, M. L., Bonan, G. B., Bretherton, C. S., Carton, J. A., Chang, S., Doney, C., Hack, J. J., Henderson, T. B., Kiehl, J. T., Large, W. G., McKenna,
- 30

CPD

2, 1155–1186, 2006

Mid-Holocene climate change in Europe: a data-model comparison

S. Brewer et al.

Title Page

Abstract

Introduction

Conclusions

References

Tables

Figures

⏪

⏩

◀

▶

Back

Close

Full Screen / Esc

Printer-friendly Version

Interactive Discussion

Mid-Holocene climate change in Europe: a data-model comparisonS. Brewer et al.

[Title Page](#)[Abstract](#)[Introduction](#)[Conclusions](#)[References](#)[Tables](#)[Figures](#)[⏪](#)[⏩](#)[◀](#)[▶](#)[Back](#)[Close](#)[Full Screen / Esc](#)[Printer-friendly Version](#)[Interactive Discussion](#)

D. S., Santer, B. D., and Smith, R. D.: The Community Climate System Model (CCSM3), *J. Climate*, 19, 2122–2143, 2006.

Davis, B. A. S., Brewer, S., Stevenson, A. C., Guiot, J., and Data Contributors: The temperature of Europe during the Holocene reconstructed from pollen data, *Quat. Sci. Rev.*, 22, 1701–1716, 2003.

Deque, M., Drevet, C., Braun, A., and Cariolle, D.: The ARPEGE/IFS atmosphere model: A contribution to the French community climate modelling, *Clim. Dyn.*, 10, 249–266, 1994.

Deutsches Klimarechenzentrum (DKRZ) Modellbetreuungsgruppe: The ECHAM3 atmospheric general circulation model, DKRZ Tech. Report, 184pp, 1992.

Gordon, C., Cooper, C., Senior, C. A., Banks, H., Gregory, J. M., Johns, T. C., Mitchell, J. F. B., and Wood, R. A.: The simulation of SST, sea ice extents and ocean heat transports in a version of the Hadley Centre coupled model without flux adjustments, *Clim. Dyn.*, 16, 147–168, 2000.

Gordon, C. T. and Stern, W. F.: A description of the GFDL global spectral model, *Mon. Wea. Rev.*, 110, 625–644, 1982.

Gordon, H. B. and O'Farrell, S. P.: Transient Climate Change in the CSIRO Coupled Model with Dynamic Sea Ice, *Mon. Wea. Rev.*, 125, 875–907, 1997.

Guiot, J., Boreux, J. J., Braconnot, P., Torre, F., and PMIP participating groups: Data-model comparisons using fuzzy logic in palaeoclimatology, *Clim. Dyn.*, 15, 569–581, 1999.

Hall, N. M. J. and Valdes, P. J.: A GCM simulation of the climate 6000 years ago, *J. Climate*, 10, 3–17, 1997.

Hansen, J. E., Sato, M., Ruedy, R., Lacis, A. A., Asamoah, K., Beckford, K., Borenstein, S., Brown, E., Cairns, B., Carlson, B., Curran, B., de Castro, S., Druyan, L., Etwarrow, P., Ferde, T., Fox, M., Gaffen, D., Glascoe, J., Gordon, H. B., Hollandsworth, S., Jiang, X., Johnson, C., Lawrence, N., Lean, J., Lerner, J., Lo, K. K., Logan, J., Lueckert, A., McCormick, M. P., McPeters, R., Miller, R. L., Minnis, P., Ramberran, I., Russell, G., Russel, P., Stone, P. H., Tegen, I., Thomas, S., Thomason, L., Thompson, A., Wilder, J., Willson, R., and Zawodny, J.: Forcings and chaos in interannual to decadal climate change., *J. Geophys. Res.*, 102, 25 679–25 720, 1997.

Harrison, S. P., Jolly, D., Laarif, F., Abe-Ouchi, A., Herterich, K., Hewitt, C., Jousaume, S., Kutzbach, J. E., Mitchell, J., Noblet, N. D., and Valdes, P.: Intercomparison of simulated global vegetation distributions in response to 6kyr BP orbital forcing, *J. Climate*, 11, 2721–2742, 1998.

- Hartigan, J. A. and Wong, M. A.: A K-means clustering algorithm, *Applied Statistics*, 28, 100–108, 1979.
- Harzallah, A. and Sadourny, R.: Internal versus SST-forced atmospheric variability as simulated by an atmospheric general circulation model, *J. Climate*, 8, 474–495, 1995.
- 5 Jousseaume, S. and Taylor, K.: Status of the Paleoclimate Modeling Intercomparison Project (PMIP), 92, 425–430, 1995.
- Jousseaume, S., Taylor, K. E., Braconnot, P., Mitchell, J. F. B., Kutzbach, J. E., Harrison, S. P., Prentice, I. C., Broccoli, A. J., Abe-Ouchi, A., Bartlein, P. J., Bonfils, C., Dong, B., Guiot, J., Herterich, K., Hewitt, C. D., Jolly, D., Kim, J. W., Kislov, A., Kitoh, A., Loutre, M. F.,
10 Masson, V., McAvaney, B., McFarlane, N., de Noblet, N., Peltier, W. R., Peterschmitt, J. Y., Pollard, D., Rind, D., Royer, J. F., Schlesinger, M. E., Syktus, J., Thompson, S., Valdes, P., Vettoretti, G., Webb, R. S., and Wyputta, U.: Monsoon changes for 6000 years ago: results of 18 simulations from the Paleoclimate Modelling Intercomparison Project (PMIP), *Geophys. Res. Lett.*, 26, 859–862, 1999.
- 15 K-1 model developers: K-1 coupled model (MIROC) description, 34, 2004.
- Kim, J.-H. and Schneider, R. R.: GHOST global database for alkenone-derived Holocene sea-surface temperature records., <http://www.pangaea.de/Projects/GHOST/>, 2004.
- Liao, X., Street-Perrott, F., and Mitchell, J.: GCM experiments with different cloud parameterization: comparisons with palaeoclimatic reconstructions for 6000 years BP, *Data and Modelling*, 1, 99–123, 1994.
- 20 Marti, O., Braconnot, P., Bellier, J., Benschila, R., Bony, S., Brockmann, P., Cadulle, P., Caubel, A., Denvil, S., Dufresne, J. L., Fairhead, L., Filiberti, M.-A., Fichet, T., Friedlingstein, P., Grandpeix, J.-Y., Hourdin, F., Krinner, G., Lévy, C., Musat, I., Talandier, C., and the IPSL Global Climate Modeling Group: The new IPSL climate system model: IPSL-CM4, 86, <http://dods.ipsl.jussieu.fr/omamce/IPSLCM4/DocIPSLCM4/FILES/DocIPSLCM4.pdf>, 2005.
- 25 Masson, V., Cheddadi, R., Braconnot, P., Jousseaume, S., Texier, D., and Participants, P.: Mid-Holocene climate in Europe: what can we infer from PMIP model-data comparisons?, *Clim. Dyn.*, 15, 163–182, 1998.
- McAvaney, B. J. and Colman, R. A.: The BMRC Model: AMIP configuration, *BMRC Research Report*, 43, 1993.
- 30 McFarlane, N. A., Boer, G. J., Blanchet, J.-P., and Lazare, M.: The Canadian Climate Centre Second-Generation General Circulation Model and its equilibrium climate, *J. Climate*, 5, 1013–1044, 1992.

Mid-Holocene climate change in Europe: a data-model comparisonS. Brewer et al.

Title Page

Abstract

Introduction

Conclusions

References

Tables

Figures

◀

▶

◀

▶

Back

Close

Full Screen / Esc

Printer-friendly Version

Interactive Discussion

Mid-Holocene climate change in Europe: a data-model comparison

S. Brewer et al.

Title Page

Abstract

Introduction

Conclusions

References

Tables

Figures

◀

▶

◀

▶

Back

Close

Full Screen / Esc

Printer-friendly Version

Interactive Discussion

- Numagati, A., Takahashi, M., Nakajima, T., and Sumi, A.: Development of an atmospheric general circulation model, in: *Climate System Dynamics and Modelling*, Tokyo, edited by: Matsuno, T., University of Tokyo, 1–27, 1995.
- Prentice, I. C., Harrison, S., Jolly, D., and Guiot, J.: The climate and biomes of Europe at 6000 yr BP: comparison of model simulations and pollen-based reconstructions, *Quat. Sci. Rev.*, 17, 659–668, 1998.
- Prentice, I. C., Jolly, D., and Participants, B.: Mid-Holocene and glacial-maximum vegetation geography of the northern continents and Africa, *J. Biogeography*, 27, 507–519, 2000.
- Sadourny, R. and Laval, K.: January and July performance of the LMD general circulation model, in: *New Perspectives in Climate Modelling*, edited by: Berger, A. L. and Nicolis, C., *Developments in Atmospheric Science*, 16, Elsevier, 173–198, 1984.
- Schlesinger, M. E., Andronova, N. G., Entwhistle, B., Ghanem, A., Ramankutty, N., Wang, W., and Yang, F.: Modeling and Simulation of Climate and Climate Change, In *Past and present variability of the solar-terrestrial system: Measurements, data analysis and theoretical models*, in: *Proceedings of the International School of Physics “Enrico Fermi”, Course CXXXIII*, Varrena, Italy, edited by: Cini Castagnoli, G. and Provenzale, A., OS Press, Amsterdam, 389–429, 1997.
- Schmidt, G. A., Ruedy, R., Hansen, J. E., Aleinov, I., Bell, N., Bauer, M., Bauer, S., Cairns, B., Canuto, V., Cheng, Y., Del Denio, A., Faluvegi, G., Friend, A. D., Hall, T. M., Hu, Y., Kelly, M., Kiang, N. Y., Koch, D., Lacis, A. A., Lerner, J., Lo, K. K., Miller, R. L., Nazarenko, L., Oinas, V., Perlwitz, J., Perlwitz, J., Rind, D., Romanou, A., Russell, G. L., Sato, M., Shindell, D. T., Stone, P. H., Sun, S., Tausnev, N., Thresher, D., and Yao, M.-S.: Present day atmospheric simulations using GISS ModelE: Comparison to in-situ, satellite and reanalysis data, *J. Climate*, 19, 153–192, 2006.
- Texier, D., Noblet, N. d., Harrison, S., Haxeltine, A., Jolly, D., Laarif, F., Prentice, I. C., and Tarasov, P.: Quantifying the role of biosphere-atmosphere feedbacks in climate change: coupled model simulations for 6000 years BP and comparison with paleodata for northern Eurasia and northern Africa, *Clim. Dyn.*, 13, 865–882, 1997.
- Tokioka, T., Yamazaki, K., Yagai, I., and Kitoh, A.: A description of the Meteorological Research Institute atmospheric general circulation model (MRI GCM-I), MRI Tech. Report No. 13, 249, 1984.
- Wright Jr, H. E., Kutzbach, J. E., Webb III, T., Ruddiman, W. F., Street-Perrott, F., and Bartlein, P. J.: *Global Climates since the Last Glacial Maximum*, 544, 1993.

Yu, Y., Zhang, X., and Guo, Y.: Global coupled ocean-atmosphere general circulation models in LASG/IAP, *Adv. Atmos. Sci.*, 21, 444–455, 2004.

Yukimoto, S., Noda, A., Kitoh, A., Sugi, M., Kitamura, Y., Hosaka, M., Shibata, K., Maeda, S., and Uchiyama, T.: The New Meteorological Research Institute Coupled GCM (MRI-CGCM2):

5 Model Climate and Variability, *Papers in Meteorology and Geophysics*, 51, 47–88, 2001.

CPD

2, 1155–1186, 2006

Mid-Holocene climate change in Europe: a data-model comparison

S. Brewer et al.

Title Page

Abstract

Introduction

Conclusions

References

Tables

Figures

⏪

⏩

◀

▶

Back

Close

Full Screen / Esc

Printer-friendly Version

Interactive Discussion

Table 1. GCMs included in the comparison study. Note that this does not include all models available in the PMIP projects, only those for which all necessary information was available. For coupled models, the resolution is given for the atmospheric component. For details of the FOAM OA and OAV model, please refer to the PMIP2/MOTIF website: <http://www-lsce.cea.fr/motif/>.

Model Name	Horizontal Resolution	Project	Reference	Type
BMRC3.2	R21	PMIP	McAvaney and Colman (1993)	A
CCC2.0	T32	PMIP	McFarlene et al. (1992)	A
CCM3	T42	PMIP	Bonan (1996)	A
CCSR1	T21	PMIP	Numagati et al. (1995)	A
CNRM-2	T31	PMIP	Deque et al. (1994)	A
CSIRO	R21	PMIP	Gordon and O'Farrell (1997)	A
ECHAM3	T42	PMIP	DKRZ (1992)	A
GFDL	R30	PMIP	Gordon and Stern (1982)	A
GISS-IIP	5°	PMIP	Hansen et al. (1997)	A
LMCELM4	7.5°	PMIP	Sadourny and Laval (1984)	A
LMCELM5	5.625°	PMIP	Harzallah and Sadourny (1995)	A
UGAMP	T42	PMIP	Hall and Valdes (1997)	A
UIUC11	5°	PMIP	Schlesinger et al. (1997)	A
YONU	5°	PMIP	Tokioka et al. (1984)	A
CCSM	T85	PMIP2	Collins et al. (2006)	OA
FGOALS-1.0g	5×4°	PMIP2	Yu et al. (2004)	OA
FOAM	R15	PMIP2		OA
GISSmodelE	5×4°	PMIP2	Schmidt et al. (2006)	OA
IPSL-CM4-V1	3.75×2.5°	PMIP2	Marti et al. (2005)	OA
MIROC3.2	T42	PMIP2	K-1 model developers (2004)	OA
MRI-CGCM2.3.4fa	T42	PMIP2	Yukimoto et al. (2001)	OA
MRI-CGCM2.3.4nfa	T42	PMIP2	Yukimoto et al. (2001)	OA
UBRIS-HadCM3M2	3.75×2.5°	PMIP2	Gordon et al. (2000)	OA
FOAM	R15	PMIP2		OAV
UBRIS-HadCM3M2	3.75×2.5°	PMIP2	Gordon et al. (2000)	OAV

Mid-Holocene climate change in Europe: a data-model comparison

S. Brewer et al.

Title Page

Abstract

Introduction

Conclusions

References

Tables

Figures

◀

▶

◀

▶

Back

Close

Full Screen / Esc

Printer-friendly Version

Interactive Discussion

Mid-Holocene climate change in Europe: a data-model comparison

S. Brewer et al.

Table 2. Standard deviation of cluster centroids. The second row gives the standard deviation of the clusters belonging to the single dominant cluster solution.

	GDD5	MTCO	AET/PET
All runs	101.46	0.39	0.021
Selected solution	19.71	0.16	0.003

[Title Page](#)[Abstract](#)[Introduction](#)[Conclusions](#)[References](#)[Tables](#)[Figures](#)[I◀](#)[▶I](#)[◀](#)[▶](#)[Back](#)[Close](#)[Full Screen / Esc](#)[Printer-friendly Version](#)[Interactive Discussion](#)

Mid-Holocene climate change in Europe: a data-model comparison

S. Brewer et al.

Table 3. Simulated clusters by model. Black squares indicate that the cluster is simulated in both the first comparison based on simulated anomalies, and the second comparison based on adjusted simulated anomalies. Gray squares represent clusters found only in the second comparison. White squares represent cluster that were not found in either comparison.

Model – PMIP1	C1	C2	C3	C4	C5
BMRC	Black	Gray	Gray	Black	Black
CCC2.0	Black	Gray	White	Black	Black
CCM3	Black	Black	White	Black	Black
CCSR1	Black	Black	White	Black	Black
CNRM-2	Black	Black	White	Black	Black
CSIRO	Black	Black	White	Black	Black
ECHAM3	Black	Black	Gray	Black	Black
GFDL	Black	Black	White	Black	Black
GISS-IIP	Black	Black	Gray	Black	Black
LMCELM4	Black	Black	White	Black	Black
LMCELM5	Black	Black	White	Black	Black
UGAMP	Black	Black	Gray	Black	Black
UIUC11	Black	Black	White	Black	Black
YONU	Black	Black	White	Black	Black
Model – PMIP2	C1	C2	C3	C4	C5
CCSM	Black	Black	Gray	Black	Black
FGOALS-1.0g	Black	Black	Gray	Black	Black
FOAM	Black	Black	White	Black	Black
GISSmodelE	Black	Black	Gray	Black	Black
IPSL-CM4-V1	Black	Black	Gray	Black	Black
MIROC3.2	Black	Black	Gray	Black	Black
MRI-CGCM2.3.4fa	Black	Black	Gray	Black	Black
MRI-CGCM2.3.4nfa	Black	Black	Gray	Black	Black
UBRIS-HadCM3M2	Black	Black	Gray	Black	Black
FOAM OAV	Black	Black	White	Black	Black
UBRIS-HadCM3M2 OAV	Black	Black	Gray	Black	Black

Title Page

Abstract

Introduction

Conclusions

References

Tables

Figures

⏪

⏩

◀

▶

Back

Close

Full Screen / Esc

Printer-friendly Version

Interactive Discussion

Mid-Holocene climate change in Europe: a data-model comparison

S. Brewer et al.

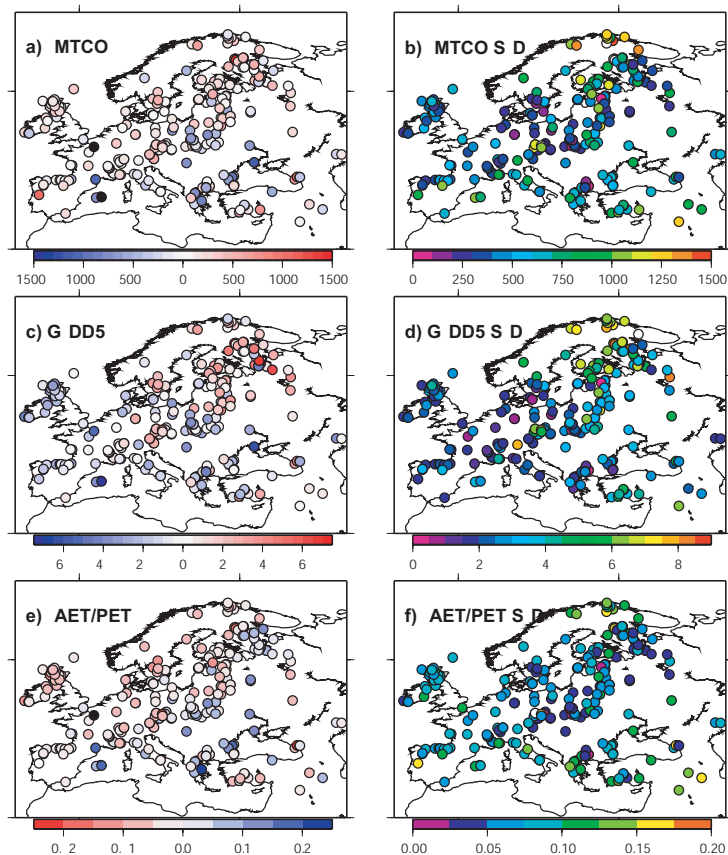


Fig. 1. Maps showing the distribution of mid-Holocene pollen sites used in the comparison, together with the reconstructed anomalies and the standard deviation of the reconstruction: **(a)** Mean temperature of the coldest month (MTCO); **(b)** MTCO standard deviation; **(c)** Growing Degree Days Over 5°C (GDD5); **(d)** GDD5 standard deviation; **(e)** Actual evapotranspiration/potential evapotranspiration (AET/PET); **(f)** AET/PET standard deviation.

[Title Page](#)[Abstract](#)[Introduction](#)[Conclusions](#)[References](#)[Tables](#)[Figures](#)[◀](#)[▶](#)[◀](#)[▶](#)[Back](#)[Close](#)[Full Screen / Esc](#)[Printer-friendly Version](#)[Interactive Discussion](#)

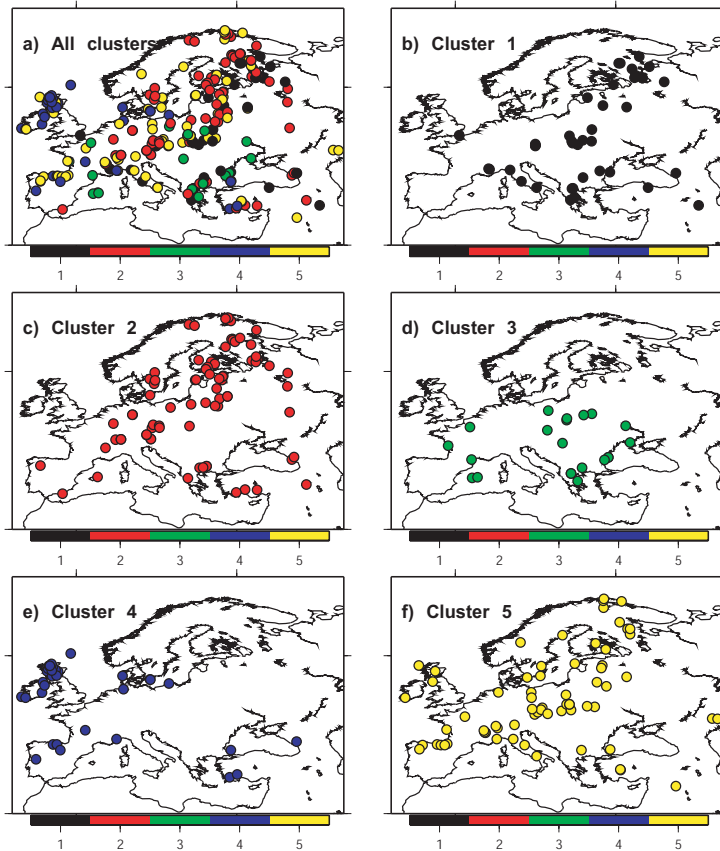


Fig. 2. Maps showing the distribution of the 5 climatically defined clusters used in the comparison.

Mid-Holocene climate change in Europe: a data-model comparison

S. Brewer et al.

Title Page

Abstract

Introduction

Conclusions

References

Tables

Figures

◀

▶

◀

▶

Back

Close

Full Screen / Esc

Printer-friendly Version

Interactive Discussion

Mid-Holocene climate change in Europe: a data-model comparison

S. Brewer et al.

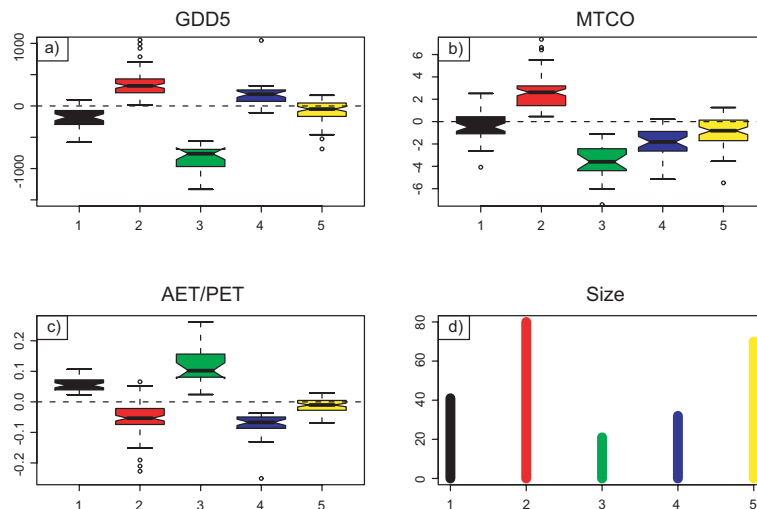


Fig. 3. Climatic characteristics of the 5 clusters, in terms of the three parameters used: **(a)** GDD5; **(b)** MTCO; **(c)** AET/PET; **(d)** cluster size.

[Title Page](#)[Abstract](#)[Introduction](#)[Conclusions](#)[References](#)[Tables](#)[Figures](#)[◀](#)[▶](#)[◀](#)[▶](#)[Back](#)[Close](#)[Full Screen / Esc](#)[Printer-friendly Version](#)[Interactive Discussion](#)

Mid-Holocene climate change in Europe: a data-model comparison

S. Brewer et al.

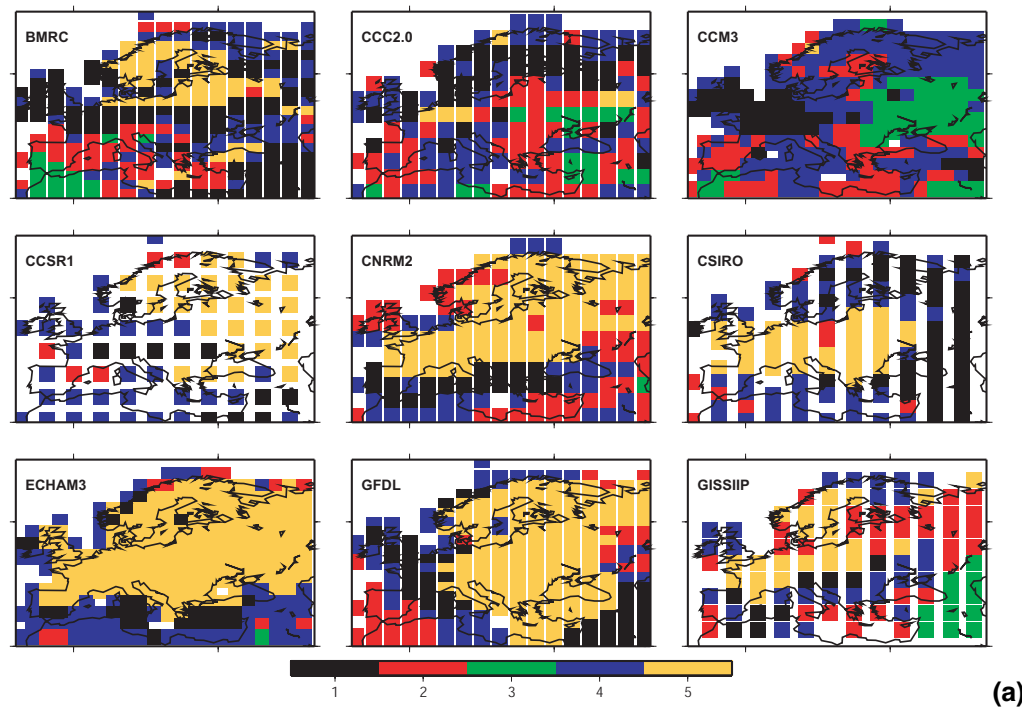
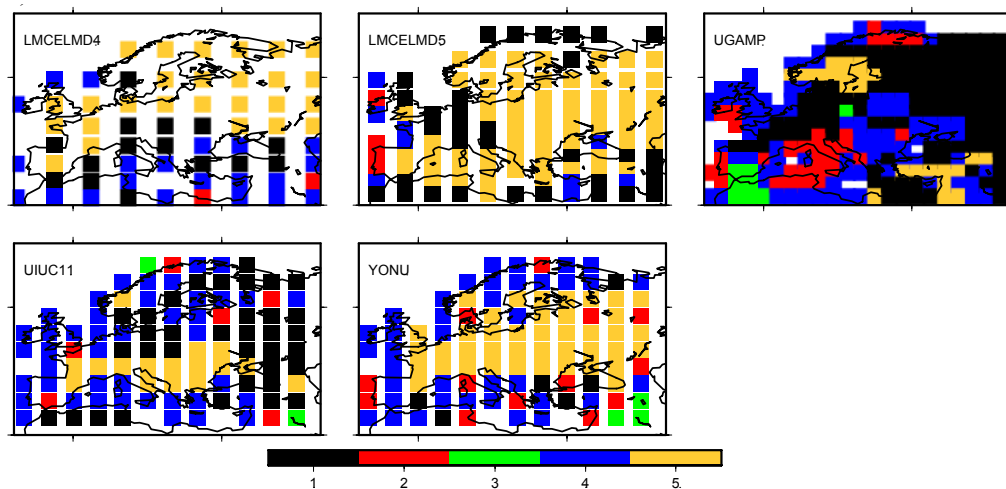


Fig. 4. Geographic distribution of clusters obtained for each model. **(a)** and **(b)** PMIP1 models; **(c)** PMIP2 OA coupled models; **(d)** PMIP2 OAV coupled models.

[Title Page](#)[Abstract](#)[Introduction](#)[Conclusions](#)[References](#)[Tables](#)[Figures](#)[◀](#)[▶](#)[◀](#)[▶](#)[Back](#)[Close](#)[Full Screen / Esc](#)[Printer-friendly Version](#)[Interactive Discussion](#)

Mid-Holocene climate change in Europe: a data-model comparison

S. Brewer et al.



(b)

Fig. 4. Continued.

[Title Page](#)[Abstract](#)[Introduction](#)[Conclusions](#)[References](#)[Tables](#)[Figures](#)[◀](#)[▶](#)[◀](#)[▶](#)[Back](#)[Close](#)[Full Screen / Esc](#)[Printer-friendly Version](#)[Interactive Discussion](#)

Mid-Holocene climate change in Europe: a data-model comparison

S. Brewer et al.

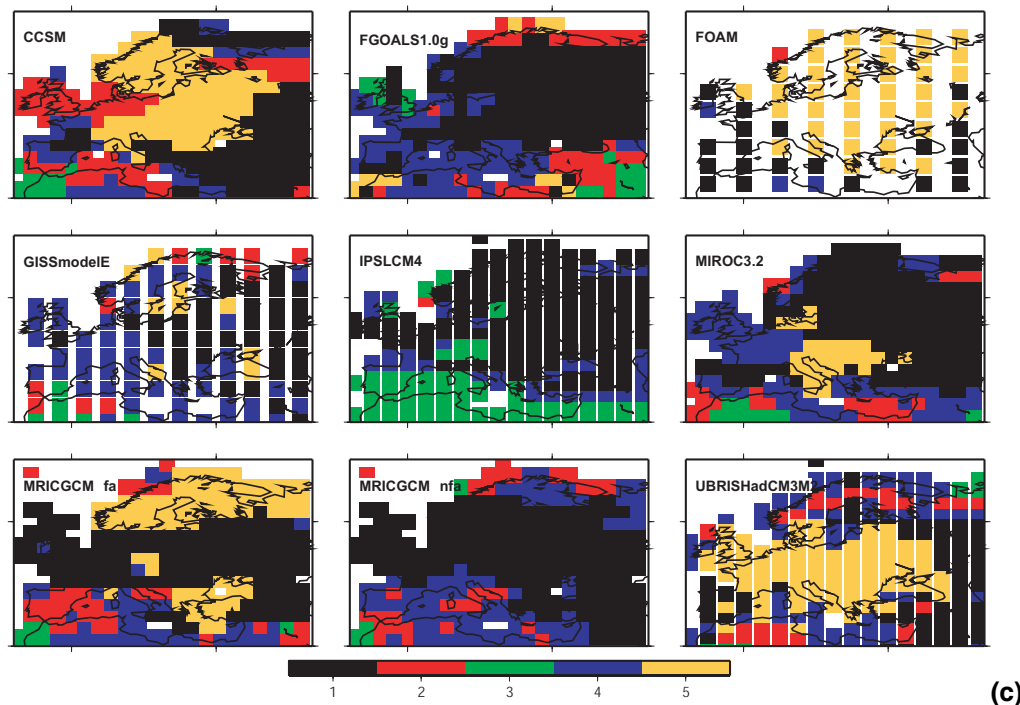


Fig. 4. Continued.

Title Page

Abstract

Introduction

Conclusions

References

Tables

Figures

◀

▶

◀

▶

Back

Close

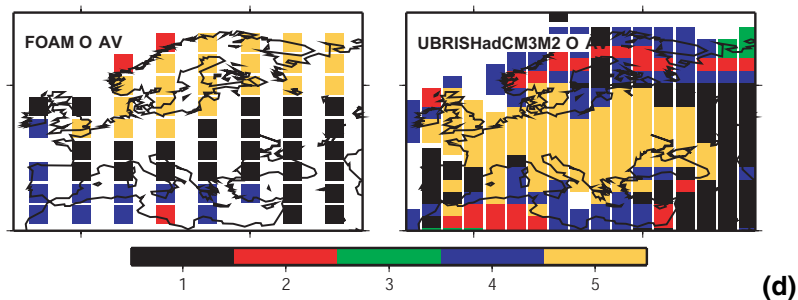
Full Screen / Esc

Printer-friendly Version

Interactive Discussion

Mid-Holocene climate change in Europe: a data-model comparison

S. Brewer et al.

**Fig. 4.** Continued.[Title Page](#)[Abstract](#)[Introduction](#)[Conclusions](#)[References](#)[Tables](#)[Figures](#)[◀](#)[▶](#)[◀](#)[▶](#)[Back](#)[Close](#)[Full Screen / Esc](#)[Printer-friendly Version](#)[Interactive Discussion](#)

Mid-Holocene climate change in Europe: a data-model comparison

S. Brewer et al.

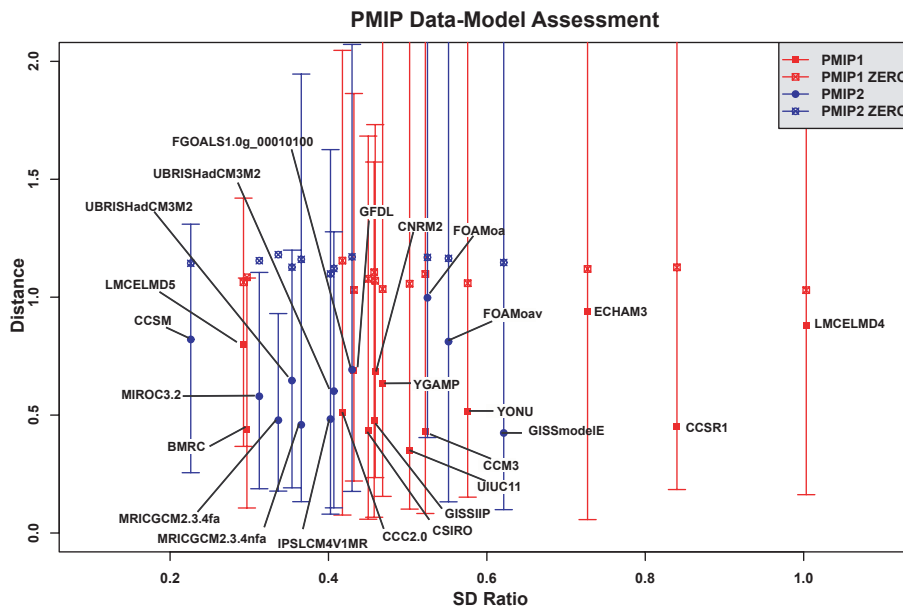


Fig. 5. Results of final comparison. Each model is represented by a bar describing the range of Hagaman distances obtained. The limits of the bar are the 5th and 95th percentile and the median distance is shown by a closed symbol. The open symbols are the results of the comparison using zero anomalies, i.e. the modern simulated climate. The position of the bars on the x-axis represents the ratio between the range of simulated and observed values. On this figure, a model with a perfect fit to the data would have a distance of zero and a ratio of values of 1.

Title Page

Abstract

Introduction

Conclusions

References

Tables

Figures

◀

▶

◀

▶

Back

Close

Full Screen / Esc

Printer-friendly Version

Interactive Discussion