



HAL
open science

Natural variability of bio-optical properties in Case 1 waters: attenuation and reflectance within the visible and near-UV spectral domains, as observed in South Pacific and Mediterranean waters

A. Morel, Hervé Claustre, David Antoine, B. Gentili

► To cite this version:

A. Morel, Hervé Claustre, David Antoine, B. Gentili. Natural variability of bio-optical properties in Case 1 waters: attenuation and reflectance within the visible and near-UV spectral domains, as observed in South Pacific and Mediterranean waters. *Biogeosciences*, 2007, 4 (5), pp.913-925. 10.5194/bg-4-913-2007 . hal-00330330

HAL Id: hal-00330330

<https://hal.science/hal-00330330>

Submitted on 18 Jun 2008

HAL is a multi-disciplinary open access archive for the deposit and dissemination of scientific research documents, whether they are published or not. The documents may come from teaching and research institutions in France or abroad, or from public or private research centers.

L'archive ouverte pluridisciplinaire **HAL**, est destinée au dépôt et à la diffusion de documents scientifiques de niveau recherche, publiés ou non, émanant des établissements d'enseignement et de recherche français ou étrangers, des laboratoires publics ou privés.



Distributed under a Creative Commons Attribution 4.0 International License

Natural variability of bio-optical properties in Case 1 waters: attenuation and reflectance within the visible and near-UV spectral domains, as observed in South Pacific and Mediterranean waters

A. Morel, H. Claustre, D. Antoine, and B. Gentili

Laboratoire d'Océanographie de Villefranche, Université Pierre et Marie Curie (Paris 6) and CNRS/INSU, 06238 Villefranche-sur-mer, CEDEX, France

Received: 18 June 2007 – Published in Biogeosciences Discuss.: 3 July 2007

Revised: 12 October 2007 – Accepted: 14 October 2007 – Published: 26 October 2007

Abstract. The optical properties of Case 1 waters have been empirically related to the chlorophyll concentration, [Chl], historically used as an index of the trophic state and of the abundance of the biological materials. The well-known natural variability around the mean statistical relationships is here examined by comparing the apparent optical properties (spectral downward irradiance attenuation and reflectance) as a function of [Chl] in two Case 1 environments, the Pacific and Mediterranean waters. These oceanic zones apparently represent two extremes of the possible bio-optical variability range around the mean. The systematic deviations, in both directions with respect to the average laws, mainly result from the differing contents in non-algal detrital materials and dissolved colored substance for a given [Chl] level. These contents are higher than the average in the Mediterranean Sea, and lower in the Pacific Ocean, respectively. These divergences between the two water bodies, detectable in the visible spectral domain, are considerably accentuated in the UV domain. The bio-optical properties in this spectral domain (310–400 nm) are systematically explored. They are more varying for a given [Chl] than those in the visible domain. Their prediction based on the sole [Chl] index is thus problematic, although it is probably possible on a regional scale if reliable field data are available. It does not seem, however, that ubiquitous relationships exist for this spectral domain for all Case 1 waters at global scale.

1 Introduction

According to the common use, Case 1 waters are those for which phytoplankton with their accompanying retinue of dissolved and particulate materials of biological origin govern the bulk optical properties. This statement also means that the terrigenous influence (through dissolved or suspended material originating from land) is reduced to its minimum, and actually is supposed to be negligible. Such a definition, based on a biogeochemical criterion, has bio-optical consequences. The apparent and inherent optical properties (AOP, and IOP, sensu Preisendorfer, 1961) of Case 1 waters have been analyzed and it was possible to empirically relate these properties to the chlorophyll concentration (thereafter denoted [Chl]). This concentration, which is routinely, or at least, very often determined at sea, was historically and is still used as a proxy of the whole (algal and non-algal) biological material, or a convenient descriptor of trophic conditions. The choice of this single index was made for obvious practical and methodological reasons. Not less obviously, the inability of such a single parameter to fully describe the whole biological compartment, as soon as there are no strict co-variations between its various components, entails that variability for all Case 1 waters is to be expected. Actually, the dispersion of data (IOP and AOP) around the empirical mean laws mentioned above attested that this variability is considerable (e.g., Gordon and Morel, 1983a; Bricaud et al., 1995; Bricaud et al., 1998; Loisel and Morel, 1998). A hint to the possibility of systematic geographical deviations was dropped by Morel and Maritorena (2001); they compared a restricted number of data from the Mediterranean Sea and from Central South Pacific for the spectral range 400–350 nm. More numerous data, extended down to 310 nm, are now available to examine these differences in detail.

Correspondence to: A. Morel
(morel@obs-vlfr.fr)

During the BIOSOPE cruise (Claustre et al., 2007¹) spectral measurements of the downward and upward planar irradiances, $E_d(\lambda)$ and $E_u(\lambda)$, respectively, were performed along a ~ 8000 km-long transect, from Marquesas islands to the Chilean coast off Concepción. The apparent optical properties, in particular the spectral diffuse attenuation coefficient, $K_d(\lambda)$, for downward irradiance, and the irradiance reflectance, $R(\lambda)$, were derived from the spectroradiometric determinations of $E_d(\lambda)$ and $E_u(\lambda)$, which were made at discrete depths within the water column.

A first study (Morel et al., 2007a) of this dataset was specifically devoted to the exceptional optical properties observed in the center of the South Pacific Gyre, near Easter Island. In this zone we encountered the most oligotrophic waters along the transect, and probably in the whole ocean (satellite Ocean Color imagery has steadily confirmed the extremely low [Chl] values in this zone – see e.g., Fournié (2002), Claustre et al. (2007¹). The exceptional clarity of these waters was in itself a worthwhile topic. This clarity has also allowed an upper limit for the absorption by pure seawater in the UV domain to be inferred. It is worth recalling that the knowledge of this absorption coefficient was highly uncertain, because the scarce published values for the UV domain were questionable and contradictory.

The present paper extends the previous study to the entire South Pacific zone along the transect. Beside the hyper-oligotrophic regime of the central part of the gyre, it also includes the examination of the mesotrophic waters (near Marquesas Islands), the eutrophic waters (Chilean upwelling area), and the transition zones. Along the whole transect, [Chl] in the upper layer ranged from 0.02 to about 2 mg m^{-3} .

The present study also takes advantage of the improved knowledge of the water absorption properties in the UV (namely the 310–400 nm domain) as mentioned above. It thus becomes possible to analyze the optical properties in this spectral domain as a function of the chlorophyll concentration. Such an analysis builds upon a previous study (Morel and Maritorena, 2001), which yet did not examine the 310–350 nm domain, and was only tentative in its conclusions regarding the 350–400 nm domain. This limitation was essentially due to an insufficient amount of field data (and of the lack of reliable values for pure water absorption).

This situation has considerably improved, as the recent $E_d(\lambda)$ and $E_u(\lambda)$ spectral determinations have been systematically extended down to 310 nm. Furthermore, a substantial amount of data for the South Pacific Ocean is now available by pooling together the recent data of the BIOSOPE (2004) cruise with those of the previous (1994) OLIPAC cruise (a S-N transect from Tahiti to 1°N). In addition, the same methodology was employed in other cruises in the Mediter-

ranean Sea (PROSOPE and AOPEX, see Table 1), as well as in South Atlantic (BENCAL cruise). The data of the latter cruise in the eutrophic waters of the Benguela current are used for the sake of completion, as they represent a useful end member in terms of [Chl] in Case 1 waters (values up to 30 mg m^{-3} ; Morel et al., 2006). Therefore, it is presently possible to compare the various oceanic zones (all in Case 1 waters) and to initiate a study of the natural variability of the bio-optical properties in such waters.

1.1 Specific motivations and goals

For many years the $K_d(\lambda)$ coefficients have been empirically studied along with [Chl] (Baker and Smith, 1982; Austin and Petzold, 1981). Actually, the results of these researches were the basis for the development of [Chl]-dependent bio-optical models for Case 1 waters (Gordon and Morel, 1983a; Gordon et al., 1988; Morel, 1988), and of algorithms aiming at assessing [Chl] from the signals recorded by ocean color sensors; more generally, the prediction of the radiation transport within such waters makes use of these results as inputs for a numerical solution of the radiative transfer equation (Morel and Gentili, 2004). The first motivation of the present study is to examine whether the South Pacific waters follow the general trends already observed elsewhere in the global ocean, or in other specific areas (Mediterranean Sea), particularly with regards to the $K_d(\lambda) \leftrightarrow [\text{Chl}]$ relationships. The dependency in shape and magnitude of $R(\lambda)$, upon [Chl] is also to be examined. The complementary objective is to try to explain the departures, if any, from the general trends.

The second aim is to extend the previous studies into the short wavelength region, which is by far less documented with regards to the possible existence of relationships between either $K_d(\lambda)$ or $R(\lambda)$, and [Chl]. The respective influences of the algal populations with their retinue (including organic and inorganic debris, also heterotrophic organisms) and of the colored dissolved material in the UV domain, are still unclear and not quantified.

1.2 Methodology and theoretical background

The $E_u(\lambda, z)$ and $E_d(\lambda, z)$ spectral irradiances were determined at discrete depths (z) by using a calibrated LICOR spectroradiometer (LI-1800 UW) equipped with a cosine collector. The incident radiation on the deck was monitored by using a gimbaled PAR cosine sensor (PNF Biospherical instrument). A detailed description of the equipment, protocols and data processing was provided in recent papers (Morel et al., 2006 and 2007a) and is not repeated. The chlorophyll concentration ([Chl], as mg m^{-3}), was determined for all cruises via High-Performance Liquid Chromatography (HPLC) (Ras et al., 2007). The notation Chl actually represents the sum of the following pigments: chlorophyll-*a* + divinyl chlorophyll-*a* + chlorophyllid-*a* + chlorophyll-*a* alomers and epimers (often referred to as “TChl-*a*”).

¹Claustre, H., Sciandra, A., and Vaultot, D.: Introduction to the special section: Bio-optical and biogeochemical conditions in the South East Pacific in late 2004, the BIOSOPE program, Biogeosciences Discuss., in preparation, 2007.

Table 1. Relevant information regarding the cruises, their geographical areas, and data, used in the present study. The minimal and maximal [Chl] values measured within the upper layer, and the minimal wavelength for the spectral irradiance measurements, are provided for each cruise.

	Min-Max [Chl] (upper layer mg m^{-3})	λ_{min} (nm)	geographical area
"Old Data" N~255			
JGR-88 (1969–1986)	0.025–25.	400	various
MM-01* (1986–1996)	0.035–5.45	(380)-400	various
MM01 includes			
OLIPAC (1994)	0.043–0.293	300	South-central
Pacific MINOS (1996)	0.035–0.089	350	W. and E. Med Sea
"New Data" N~201			
PROSOPE (1999)	0.024–3.75	300	Moroccan upwelling, W. and E. Med Sea
BENCAL (2002)	0.245–29.1	300	Benguela
AOPEX (2004)	0.052–0.162	300	W-Med Sea
BIOSOPE (2004)	0.0195–1.47	300	South-East Pacific

Acronyms : OLIGotrophy in PACific (OLIPAC); Mediterranean InvestigationN of Oligotrophic Systems (MINOS); PROductivity of Oceanic PELagic systems (PROSOPE); BIogeochimistry and Optics South Pacific Experiment (BIO SOPE); Ocean Color Cal/Val in the Benguela upwelling ecosystem (BENCAL); Apparent Optical Properties Experiment (AOPEX).

Information and data available on www.obs-vlfr/proof/index-vt.htm for OLIPAC, PROSOPE, and BIO SOPE cruises on www.Ifremer.fr/sismer for MINOS and AOPEX.

BENCAL Cruise Report, NASA Technical Memorandum 2003-206892, Vol. 27.

A minimal set of definitions is provided below. The spectral attenuation coefficient for downward irradiance, $K_d(\lambda)$, is computed (from null depth, denoted 0^- , to a depth z) as

$$K_d(\lambda) = (1/z) \ln[E_d(\lambda, 0^-)/E_d(\lambda, z)] \quad (1)$$

actually $E_d(\lambda, 0^-)$, just beneath the surface, is not measured but derived from the measurement above the surface, $E_d(\lambda, 0^+)$, (notation 0^+), by applying a spectrally neutral coefficient (0.97) that accounts for the transmission across the air-sea interface. Here the examination is restricted to the upper layer, and z is about or slightly larger than $1/K_d(\text{PAR})$, where PAR represents the polychromatic (400 to 700 nm) photosynthetically available radiation (as used in algal physiology and photosynthesis studies).

The sub-surface irradiance reflectance at a depth z , $R(\lambda, z)$, is defined as

$$R(\lambda, z) = E_u(\lambda, z)/E_d(\lambda, z) \quad (2)$$

The E_d and E_u determinations are separated in time by a few minutes, and both quantities are normalized to a constant incident PAR irradiance at the surface (thanks to the deck reference). The depth, z , is as shallow as possible, and was the minimal depth (about 1 to 2 m) where the $E_u(\lambda, z)$ determination was possible, given the waves and ship's roll. The downward spectral irradiance at the depth z , $E_d(\lambda, z)$, is computed by extrapolating $E_d(\lambda, 0^-)$ from 0^- to z , by using the appropriate $K_d(\lambda)$ coefficients.

Based on the spectral $E_d(\lambda, z)$ determinations, PAR(z) at any depth z is obtained by integrating the $E_d(\lambda, z)$ spectrum

over the 400–700 nm range, according to its definition (Tyler, 1966). By convention, the bottom of the euphotic layer, denoted Z_{eu} , is commonly and (somewhat arbitrarily defined) as that depth where the downward PAR irradiance falls to 1% of its sub-surface value (Ryther, 1956; see also discussion about its significance in Banse, 2006). This 1% level can be determined from the PAR vertical profiles. For some stations and because of technical limitations (actually when Z_{eu} was >135 m), Z_{eu} was determined by using the PNF profiler instrument lowered beyond 135 m. Beside of being crucial information in primary production studies (both for experimental and modeling approaches), Z_{eu} is also a useful index to globally describe the bio-optical state of the entire upper water column; as 99% of the solar visible radiation is absorbed within the 0 - Z_{eu} layer, the knowledge of Z_{eu} is important to predict the solar heat deposition with its consequences on the upper ocean dynamics (Morel et al., 2007b).

2 Results

As said earlier, the data used for the present study are not restricted to the BIO SOPE cruise. All the data used in the present study have been collected with the same instruments and optical and chemical protocols during several recent oceanographic campaigns, as summarized in Table 1. The OLIPAC and BIO SOPE data, both for the South-Eastern Pacific, will be merged. Regarding the Mediterranean Sea, the data from the MINOS, PROSOPE, and AOPEX cruises

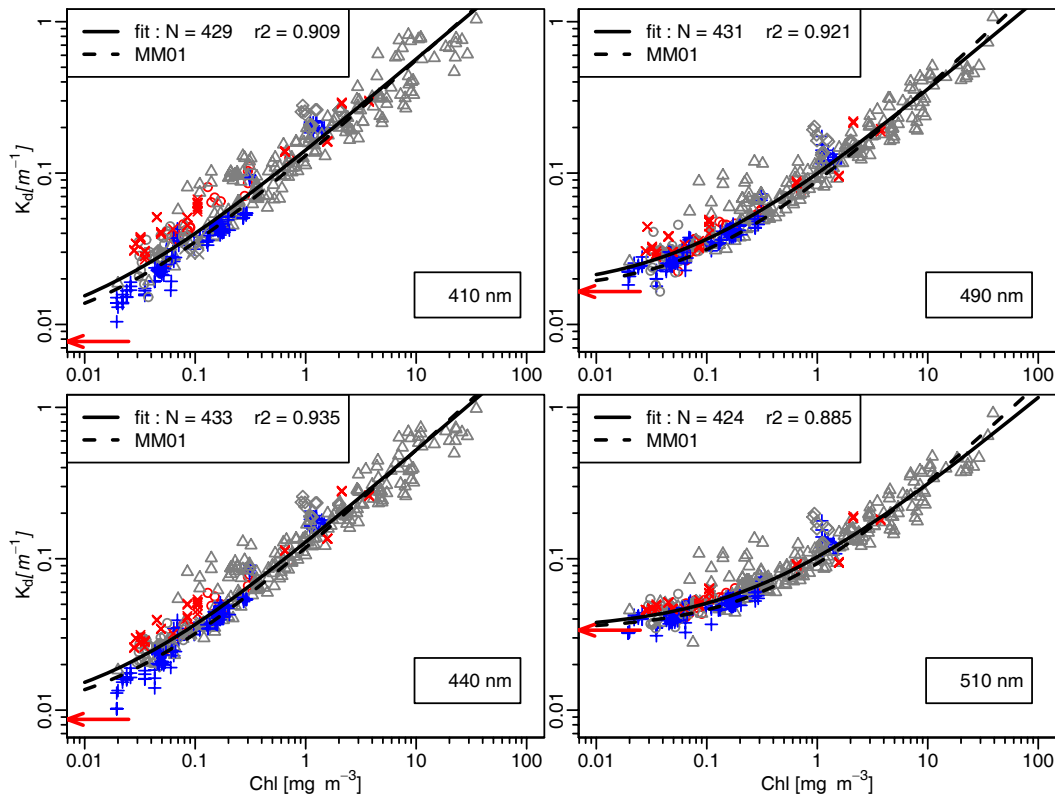


Fig. 1. Plot of the K_d values for the upper layer as a function of [Chl], and for selected wavelengths, as indicated. The red symbols are for the Mediterranean Sea, and the blue symbols for the South Pacific data. The continuous black curve represents the best fit (Eq. 5) for all field data (number of data and r^2 provided in insert); the K_w constant introduced into Eq. (5) is shown as red arrows. The dashed black curve represents the previous (2001) best fit with the χ and e values which were proposed in MM-01.

will also be pooled together. The data of BENCAL, the only cruise in eutrophic Case 1 waters, will be considered to encompass the whole range of [Chl] values. Finally, “old data”, already presented and analyzed in previous studies (Morel, 1988; Morel and Maritorea, 2001, hereafter denoted JGR-88, and MM-01), will be displayed when necessary, especially for the sake of comparison with the “new data”.

2.1 The diffuse attenuation coefficient $K_d(\lambda)$ and its variation with [Chl] in the visible domain

The $K_d(\lambda)$ -[Chl] relationships are displayed in Fig. 1 for some selected wavelengths in the visible part of the spectrum, together with a curve representing the best fit for all data (i.e., “old + new” data). For this statistical analysis, the quantity $K_{\text{bio}}(\lambda)$ is formed as the difference (JGR88)

$$K_{\text{bio}}(\lambda) = K_d(\lambda) - K_w(\lambda), \quad (3)$$

where $K_w(\lambda)$, which represents the contribution by hypothetically pure seawater, is computed (Smith, 1981) as the sum of

the absorption coefficient and the backscattering coefficient for pure seawater (half the scattering coefficient), namely

$$K_w(\lambda) = a_w(\lambda) + \frac{1}{2}b_{sw}(\lambda), \quad (4)$$

Then a linear regression analysis is performed on the log-transforms of the $K_{\text{bio}}(\lambda)$ and [Chl] values for the upper layer, and leads for each wavelength to expressions of the form

$$K(\lambda) = K_w(\lambda) + \chi(\lambda)[\text{Chl}]^{e(\lambda)}, \quad (5)$$

where the coefficient $\chi(\lambda)$ represents the K_{bio} spectrum when [Chl] is 1 mg m^{-3} , and the exponent $e(\lambda)$, which is always below 1, quantifies the non-linear dependency of K_{bio} upon [Chl].

The BIOSOPE and OLIPAC data (blue symbols, Fig. 1) are very similar over their common [Chl] range (0.02 – 0.3 mg m^{-3}). These Pacific waters follow the general trend (black curves) for Case 1 waters. Without being exceptional when considering the overall dispersion, their K_d values lie rather systematically below the curve representing the best fit for all data. In addition, this departure from the mean toward lower values is progressively more accentuated for

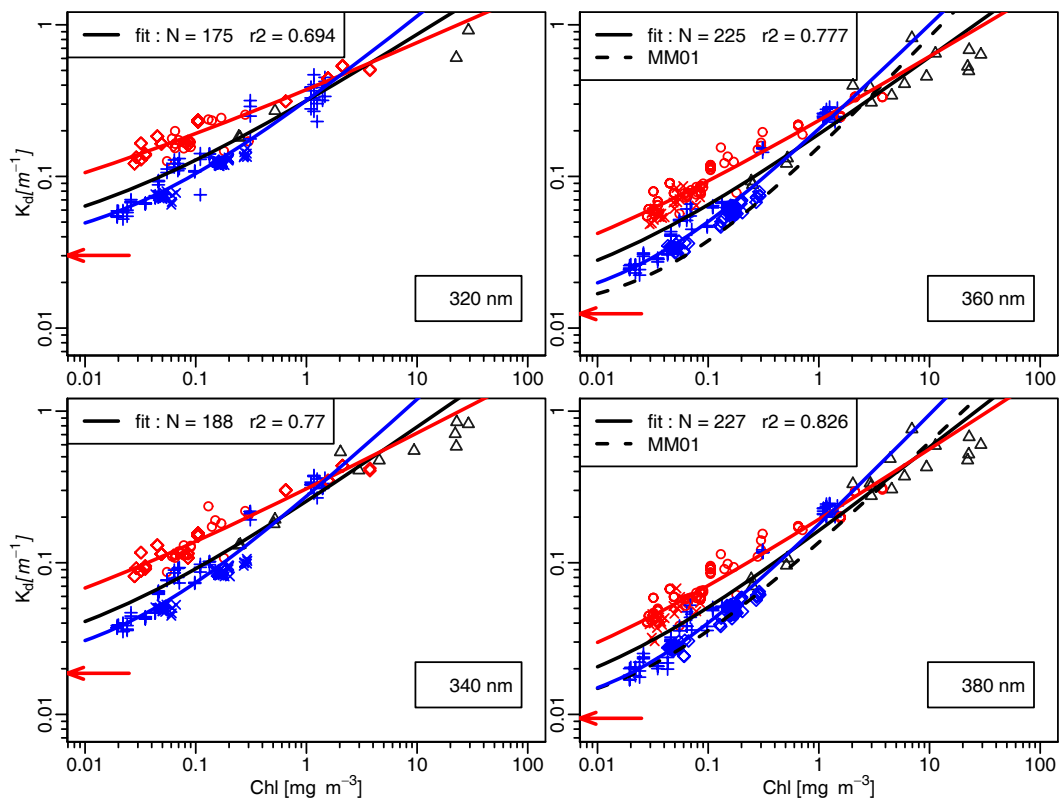


Fig. 2. As in Fig. 1, but for wavelengths in the UV part of the spectrum, as indicated. The meaning of the continuous and dashed black curves is as in Fig. 1; Note that there was no χ and e values below 350 nm in MM-01, therefore no dashed black curve in the panels for 320 and 340 nm. The increased number of data between 340 and 360 nm results from the inclusion of the data from the MINOS cruise in Mediterranean Sea (see Table 1). The blue and red curves represent the separate best fits for the Pacific and Mediterranean data, respectively.

decreasing wavelength (from 510 to 410 nm). In contrast, the Mediterranean K_d values (red symbols), are recurrently above the curve. This opposite distribution of the data from the two oceanic regions explains why, when all data are merged, the best fits and associated parameters, $\chi(\lambda)$ and $e(\lambda)$, remain practically unchanged with respect to those previously presented in the MM-01 study (that already included the OLIPAC data). Separate regressions performed on the Pacific and Mediterranean datasets result in best fit parameters that differ significantly (see below Sect. 3).

2.2 The diffuse attenuation coefficient $K_d(\lambda)$ and its variation with [Chl] in the UV domain

The same analysis as above can be performed within the UV domain by using the revised values of the absorption coefficient by pure seawater recently proposed in Morel et al. (2007a), namely their $a_{w1}(\lambda)$ values. In MM01 such an analysis was attempted for the range 350–400 nm, yet the $a_w(\lambda)$ values used in Eq. (4) were uncertain, and the number of data somewhat insufficient. The backscattering coefficients (Eq. 4) for pure seawater, $b_{sw}(\lambda)$, are derived from Buiteveld (1994) values, and multiplied by 1.30 to account for the effect of salinity (Morel, 1974).

The oligotrophic and mesotrophic waters of the Pacific and Mediterranean behave differently (examples in Fig. 2). For all wavelengths, the Pacific waters are systematically characterized by lower K_d (UV) values, compared to those of Mediterranean waters. This behavior, which was already noted for the shortest wavelengths of the visible spectrum (Fig. 1a), is increasingly confirmed toward the shortest wavelengths in the UV domain. In contrast, there is no longer systematic differences when [Chl] is close to or above 1 mg m^{-3} , i.e., between the K_d values in the Chilean and Moroccan upwelling zones. Interestingly, these values are in continuity with those determined in the Benguela Current, with much higher [Chl] values.

2.3 Separate regression analyses for Pacific and Mediterranean waters

To account for the distinct behaviors of the two water bodies, separate regression analyses are appropriate. They were carried out systematically for all wavelengths from 560 down to 310 nm (increment 5 nm). The two resulting sets of values are graphically compared in Fig. 3a and b, and the regression coefficients in Fig. 3c. The χ and e values differ significantly and increasingly in the UV domain. It is

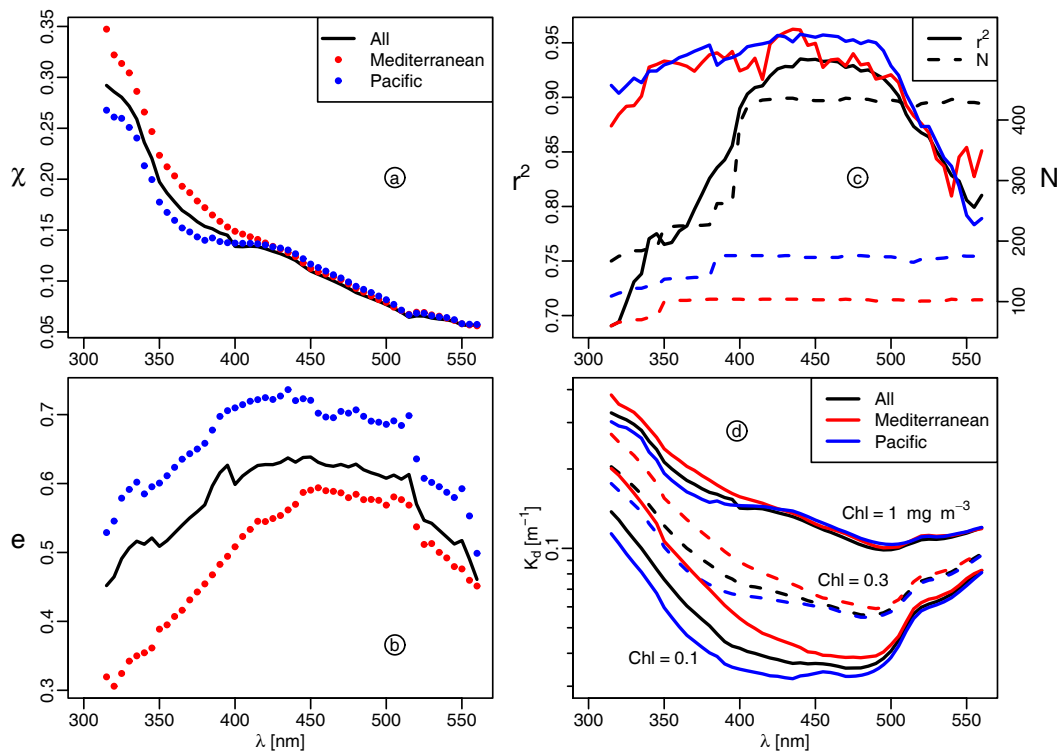


Fig. 3. The $\chi(\lambda)$ (a) and $e(\lambda)$ (b) values corresponding to the best fits (Eq. 5), separately computed for the Pacific (blue) and Mediterranean waters (red); the corresponding coefficient of determination and number of data (r^2 and N) are spectrally displayed in (c). In (d), examples of $K_d(\lambda)$ values computed with the previously shown $\chi(\lambda)$ and $e(\lambda)$ values and for 3 [Chl] values as indicated. In the four panels the black curves show the same quantities when the two datasets are merged.

worth noting that the respective coefficients of determination are high (Fig. 3c) even inside the UV domain. As a consequence, when all data are pooled together, the global correlation logically degrades, particularly in the UV domain. The specific values for the two oceanic provinces are also compared to the adopted χ and e values (limited to 350 nm) resulting from a general merging of all data available (<ftp://oceane.obs-vlfr.fr/pub/morel/2006-e-chi>).

Regarding the $\chi(\lambda)$ parameter (Fig. 3a), the values for the two water bodies are not significantly differing within the 420–560 nm domain. Below 420 nm, the Mediterranean values are ostensibly above the Pacific values (and above the average values, admittedly more influenced by the latter, with about 115 data versus 62 for the former). The spectral shape of the $\chi(\lambda)$ coefficient in the UV domain is characterized for both oceanic areas by a strong increase, with almost a doubling from 410 to 315 nm, and by the presence of a shoulder inside the 330–315 nm region.

Regarding the $e(\lambda)$ exponent (Fig. 3b), large deviations occur between the two sets, with higher values for Pacific waters, and lower ones for the Mediterranean waters. The departure from linearity between K_d and [Chl] is expressed by the $e(\lambda)$ values (always <1); this departure is thus notably larger in the Mediterranean waters within the entire (310–560 nm) spectrum, and especially below 450 nm. Such

a weakening in the dependency upon [Chl] (even with high and significant r^2 values, cf. Fig. 3c) suggests the existence of an optically influential background which would be uncorrelated with the contemporaneous algal stock. On the contrary, the existence of larger $e(\lambda)$ values for Pacific waters globally shows that the dependence upon [Chl] is maintained at a higher degree (lesser non-linearity), which would mean that the interfering effect of a [Chl]-independent background is less marked.

More generally, it is interesting to note the decrease of the $e(\lambda)$ values in the UV compared with those in the visible domain. With various extents this remark holds true in both cases (Mediterranean and Pacific). Accordingly, the UV absorbing material (the dissolved colored organic material, CDOM, and likely some colloidal and particulate material) generally appears to be rather loosely related to the local algal biomass, in contrast to the material responsible for absorption within the visible part of the spectrum, which definitely seems more closely associated with the algae themselves. Therefore, the generic concept of Case 1 waters tends to weaken, or more precisely, to take a more regional sense, as far as the UV domain is concerned.

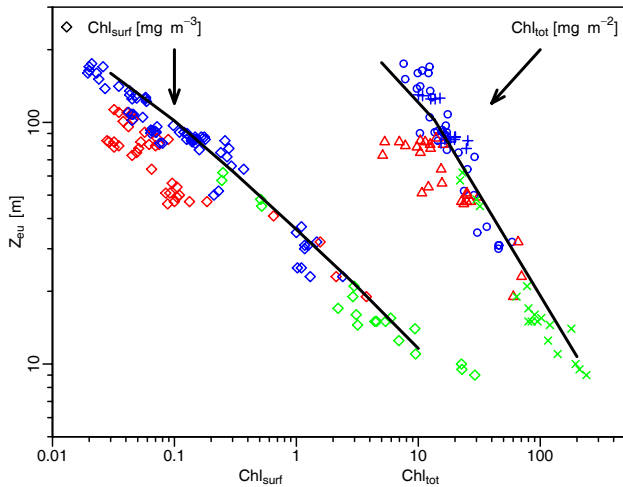


Fig. 4. Left hand side: Z_{eu} as a function of $[\text{Chl}]_{\text{surf}}$, as mg m^{-3} , or, right hand side, as a function of $[\text{Chl}]_{\text{tot}}$, as mg m^{-2} , for the Pacific (blue) and Mediterranean waters (red). The curve for the Z_{eu} - $[\text{Chl}]_{\text{surf}}$ relationship is a modeled one for a sun-zenith angle equal to 30° , and is reproduced from Morel and Gentili, 2004 (their Fig. 1 and Table 1); the curve for the Z_{eu} - $[\text{Chl}]_{\text{tot}}$ relationship is reproduced from MM01 (their Fig. 6). The green symbols are for the eutrophic waters of the Benguela Current (Morel et al., 2006) shown for completion.

2.4 Global visible (PAR) radiation and euphotic depth

Empirical relationships between Z_{eu} and the average chlorophyll concentration within the upper layer $[\text{Chl}]_{\text{surf}}$, or between Z_{eu} and the column integrated concentration, $[\text{Chl}]_{\text{tot}}$ (as mg m^{-2}) have previously been derived for Case 1 waters (JGR88, MM-01). In addition, hyperspectral computations of the radiative transfer were performed (Morel and Gentili, 2004), using the appropriate relationships between the inherent optical properties and $[\text{Chl}]$, and also by accounting for the vertical phytoplankton profiles (as statistically established as a function of $[\text{Chl}]_{\text{surf}}$; see Morel and Berthon, 1989 and also Uitz et al., 2006). This sun angle dependent modeling has explained and validated the mean empirical relationships derived from simultaneous determinations of Z_{eu} and $[\text{Chl}]$ profiles made in the field. Therefore, specific and regional situations can be compared to the “average” relationships.

The experimental Z_{eu} depths are displayed in Fig. 4 as a function of measured $[\text{Chl}]_{\text{surf}}$, or as a function of $[\text{Chl}]_{\text{tot}}$ ($[\text{Chl}]_{\text{tot}}$ is computed by trapezoidal integration over the $[\text{Chl}]$ vertical profiles). The previously published curves (empirical and modeled) depicting the average behavior are also shown. As a first comment, the Pacific waters follow the general pattern; however, in the domain of very low $[\text{Chl}]$ (integrated contents), a distinct departure appears, with observed Z_{eu} values exceeding those corresponding to the average situation. Note that the largest Z_{eu} values, apparently

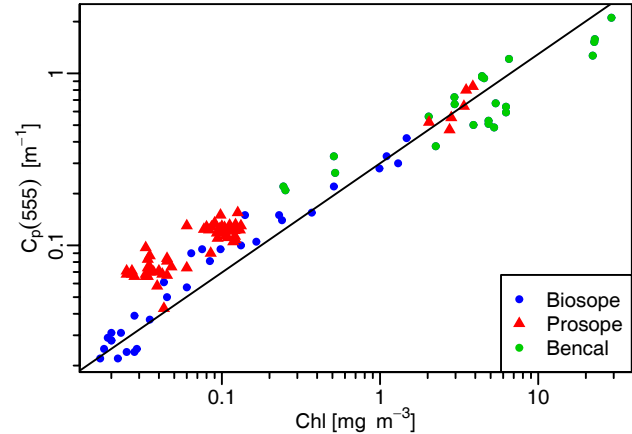


Fig. 5. The particle attenuation coefficient, c_p (as m^{-1}) at the wavelength 555nm, obtained using an ac-9 instrument, and plotted as a function of $[\text{Chl}]$ for the upper layer waters in the Pacific Ocean (blue dots) and in the Mediterranean Sea (red dots). The line represents the relationship $c_p(555) = 0.275 [\text{Chl}]^{0.635}$, derived from $c_p(660)$ in Loisel and Morel (1998; their subsets 2 and 3), and by using a $\lambda^{-0.5}$ dependency for the transfer from 660 to 555 nm.

ever observed (~ 170 m), are located in the central South Pacific gyre (see Fig. 1b in Morel et al., 2007a). Conversely, most of the Mediterranean Z_{eu} values are notably lower than those expected when the average relationship are operated with their $[\text{Chl}]_{\text{surf}}$ values; correlatively, the $[\text{Chl}]_{\text{tot}}$ column contents are considerably reduced compared to the average. The contrast between the two water bodies is such that within similar euphotic layers (e.g. ~ 80 m), the integrated column contents may differ by a factor of about 2, and are notably lower in the Mediterranean waters compared to Pacific. Most likely, such a difference has a potential impact upon the primary production (actual or predicted), to the extent that the first determinant of the primary production is the biomass itself (this topic is out of the scope of the present study).

The above observations about the euphotic layer, show that the global bio-optical state of the entire water columns are markedly different in the two zones. In Mediterranean waters, additional substances efficiently compete with algae in the absorption process inside the PAR spectral domain, whereas in Pacific waters, phytoplankton with their normal retinue seem to be dominant in this process. This interpretation is compatible with the spectral analysis previously made in the visible and UV parts of the spectrum, which have evidenced systematically lower K_d values in Pacific waters than in Mediterranean waters.

2.5 The effect of scattering upon attenuation

Note that in the preceding remarks, the absorption term has been put forward to explain the variations in the diffuse attenuation coefficients. This is justified by the dominance of

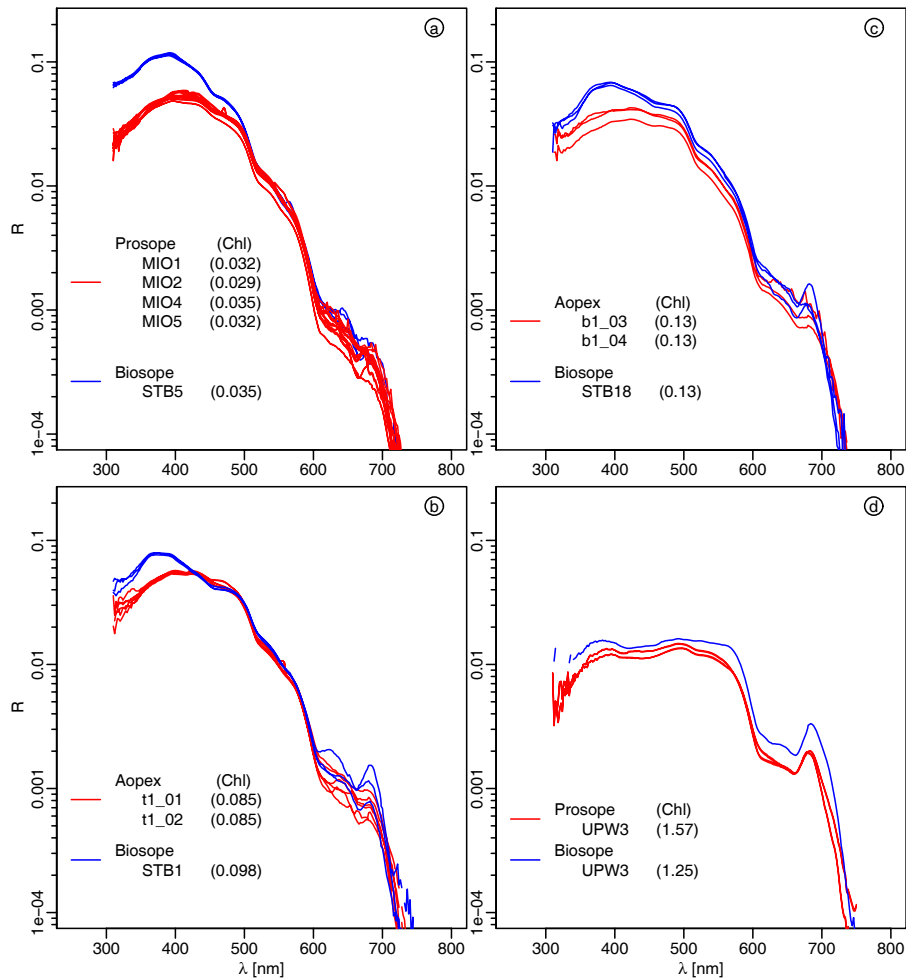


Fig. 6. Reflectance spectra (Eq. 2, as %) for similar [Chl] values as determined in the Pacific Ocean and in the Mediterranean Sea. The panel (d) shows reflectance spectra for the Chilean and Moroccan upwelling zones.

absorption in the diffuse attenuation process. Indeed, K_d can be approximately expressed as (Gordon, 1989)

$$K_d = 1.04(\mu_d)^{-1}(a + b_b), \quad (6)$$

where μ_d is the average cosine for downward irradiance (of the order of 0.6–0.9, depending on solar elevation, wavelength, and [Chl] value), and where a and b_b are the absorption and backscattering coefficients, respectively. The latter is always small when compared to the former; typically it amounts to a few per-cent of the absorption coefficient; it may reach exceptionally 25%, in extremely clear waters and in the blue-violet part of the spectrum (i.e. when the backscattering by water molecule becomes the dominant process). Nevertheless, the influence of the b_b term has to be taken into consideration. If b_b is enhanced in Mediterranean waters (e.g. Claustre et al., 2002), because of the presence of more abundant scattering particles, or because of an increased backscattering efficiency, it may partly contribute to the enhanced K_d values in this zone.

The first argument is supported by Fig. 5, where the particle attenuation coefficients, c_p , are displayed as a function of [Chl] for the Pacific waters and for the Mediterranean waters; also included are some eutrophic waters observed in the South Atlantic (all the c_p values were determined by using AC-9 instruments). At 555 nm, where algal absorption is at its minimum, the attenuation coefficient is a close proxy of the scattering coefficient. Conspicuously, the scattering coefficients in the Mediterranean waters are higher than those in Pacific waters (by almost a factor of 2 for the same [Chl]), whereas the latter follow more closely the empirical mean relationship established by Loisel and Morel (2001). Such rather large deviations in Mediterranean, however, stay within the (wide) range of variability previously observed for other oceanic waters (see Fig. 3 *ibidem*). The presence of submicron Saharan dust in suspension within the upper layer would be a plausible explanation to the enhanced scattering in Mediterranean waters, at least at some seasons (Claustre et al., 2002). More abundant debris than usual or

perhaps coccolithophorids cannot be excluded as other plausible (but not identified) causes.

2.6 The spectral irradiance reflectance

In the hyper oligotrophic situations ($[\text{Chl}] \sim 0.02 \text{ mg m}^{-3}$) found in the South Pacific anticyclonic gyre, the upper layer reflectance spectra exhibit uncommon shapes and exceptionally high values. These spectra have been discussed in Morel et al. (2007a), and presented as being those of the bluest natural waters ever observed in the whole ocean. In brief, the $R(\lambda)$ values for these waters undergo a maximum slightly exceeding 13% in the near UV domain (around 394 nm), and $R(\lambda)$ is still as high as 6% at 310 nm.

This distinct maximum around 394 nm persists when $[\text{Chl}]$ increase (up to 0.13 mg m^{-3}), as shown in Fig. 6a to c; in these figures the reflectance spectra for Pacific and Mediterranean waters with similar $[\text{Chl}]$ are comparatively displayed. The most striking differences between pairs of spectra are observed for the UV domain, and extend toward the violet and blue domain, at least for the lowest $[\text{Chl}]$ values; they tend to diminish for higher $[\text{Chl}]$ values. For the longer wavelengths (say beyond 450–490 nm), the differences in $R(\lambda)$ between the two water bodies are minute, albeit systematic (see discussion below). For the sake of completeness, the last panel of Fig. 6 provides examples of similar eutrophic situations in the Moroccan and Chilean upwelling zones.

At least for Case 1 waters, the ratio of two reflectances at two specific wavelengths (or “band ratio”) is the basis of most of the algorithms (either empirical or semi-analytical) that have been developed for the interpretation of the Ocean Color imagery as captured from space. The semi-analytical algorithm OC4Me (Morel et al., 2007b) by which several and successive band ratios are related to $[\text{Chl}]$ (see legend) is represented by the curve in Fig. 7. The corresponding band ratios derived from the reflectance spectra determined in the Pacific and Mediterranean environments are superimposed on this curve. According to the way it has been built, this semi-analytical algorithm represents an average situation for Case 1 waters. To the extent that these waters experience a natural variability around the statistically averaged values, a scatter of the data is expected; this is clearly demonstrated by Fig. 7. Note that this natural scatter around the average is the main cause of the limitation in the $[\text{Chl}]$ retrieval from space, whatever the algorithm (semi-analytical as here or empirical) that is employed.

The scatter is not completely disorganized, however. Indeed, in the domain of low $[\text{Chl}]$, when the band ratio involved is $R(443)/R(560)$, the Mediterranean waters are often below the modeled curve (actually, most of the data from PROSOPE and AOPEX cruises, but not those from the MINOS cruise, which perhaps indicates a seasonality in this trend). This deviation leads to $[\text{Chl}]$ returns of the algorithm larger than the in situ values. This bias in the Mediterranean waters has already been pointed out and discussed in Claus-

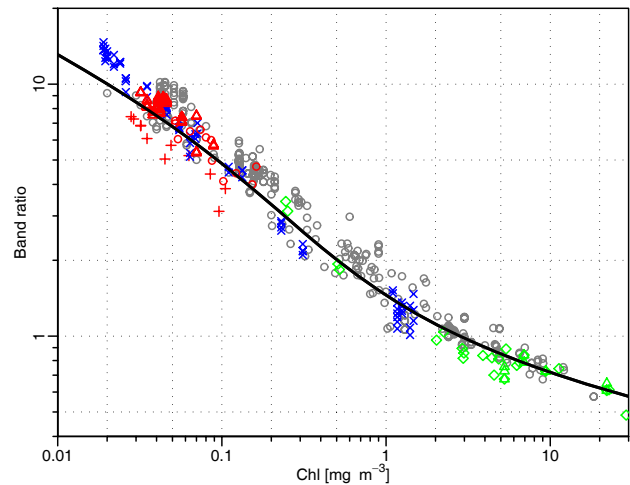


Fig. 7. The curve represents the semi-analytical algorithm (OC4Me) developed for the MERIS sensor to derive $[\text{Chl}]$. It is of the maximum band ratio type; namely, it makes use of the largest ratio of spectral reflectances amongst the three following ones $R(443)/R(560)$, $R(490)/R(560)$, and $R(510)/R(560)$. The switch between the first and second ratio occurs around $[\text{Chl}] \sim 0.54 \text{ mg m}^{-3}$, and between the second and third one around 2.2 mg m^{-3} . The field data are plotted in the same way, so that for most of the Pacific and Mediterranean data (blue and red symbols, respectively), the maximum ratio implied (and plotted) is $R(443)/R(560)$. For the waters of the Moroccan and Chilean upwelling zones, as well as for the Benguela Current data (green symbols) the two other ratios are implied. The grey symbols stand for earlier data already shown in MM01.

tre et al. (2002); actually, specific algorithms for the retrieval of $[\text{Chl}]$ have been proposed and used in the case of this sea (D’Ortenzio et al., 2002; Bricaud et al., 2002).

In contrast, for the Pacific waters, and particularly for very low $[\text{Chl}]$ values ($< 0.03 \text{ mg m}^{-3}$), the measured $R(443)/R(560)$ ratios are slightly higher than the modeled ones, and thus entail a slight underestimate of the actual concentration when applying the nominal algorithm. These departures from the average curve (i.e. from algorithm) are fully coherent with the deviations already noted regarding the spectral attenuation coefficients, a proxy of the absorption coefficients (recall that R is roughly inversely proportional to absorption). In case-1 waters, absorption and backscattering do not tightly co-vary with $[\text{Chl}]$, so that reflectance, or reflectance ratios as above, necessarily show deviations around the values derived from the nominal algorithms. Lee and Hu (2006) defined criteria based on “acceptable” deviations with respect to these algorithms; beyond these thresholds, the waters could not longer be considered as Case 1. These (admittedly arbitrary) criteria appear to be too restrictive compared to the possible deviations as, for instance, those presently observed. Without entering a debate easily of semantic nature, a larger range of waters could be categorized as Case 1

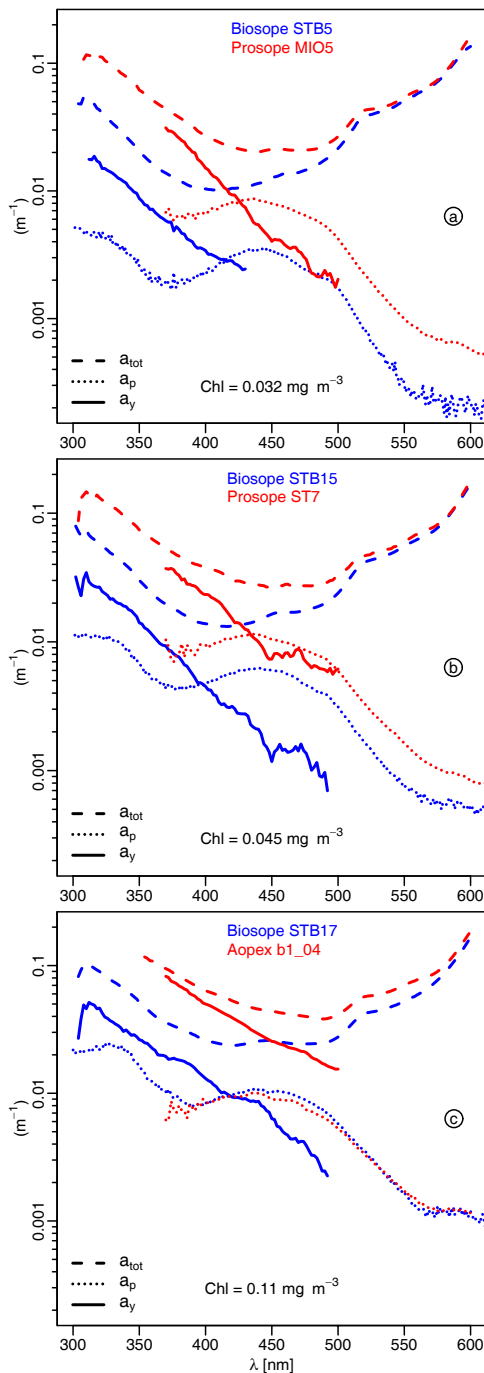


Fig. 8. Spectra of the total absorption coefficient (a_{tot}), derived from the diffuse attenuation coefficient, of the particulate absorption (a_p) determined via the glass fiber filter technique, and of the dissolved colored matter (a_y , see text). (a) For a couple of stations in Pacific and Mediterranean waters (blue and red curves, respectively) with the same chlorophyll concentration, as indicated. (b) and (c) As in (a), but for other [chl] values. Note that during the Mediterranean cruises and because of technical limitations, the a_p determinations were restricted in the UV domain to 370 nm. Consequently, the a_y estimates experience the same spectral limitations. This limitation was removed for the BIOSOPE cruise.

waters, more in conformity with their biogeochemical status and definition, if less stringent criteria were adopted.

3 Discussion

Very likely because the nutricline is extremely deep ($1 \mu\text{MNO}_3^-$ at ~ 200 m; Fig. 5a, Claustre et al., 2007¹), so that the [Chl] values stay minimal over extended water columns (0 to 100 m or more), the oligotrophic waters in the South Pacific gyre are among the clearest natural waters. They are systematically more transparent to solar radiation than “average” Case 1 waters with similar [Chl], and, a fortiori, when compared to Mediterranean waters, that conversely are less transparent than average.

Actually, between individual $K_d(\lambda)$ values in Pacific waters and those resulting from the global $K_d(\lambda) \leftrightarrow [\text{Chl}]$ relationships, the difference is not so large within the visible part of the spectrum. For a merged dataset (all those discussed here plus earlier data), the RMSE for the log-transform $K_d(\lambda)$ and [Chl] data (see Table 4 and Fig. 4, in Morel et al., 2007b) is 0.08 at 510 nm (corresponding to randomly distributed deviations in K_d of about $\pm 20\%$ with respect to the mean). The RMSE progressively increases for decreasing wavelengths; for instance, it reaches 0.12 ($\pm 32\%$ deviations) at 412 nm. Therefore, from this point of view, the Pacific data are not exceptional, as they remain within the expected “normal” dispersion for K_d in Case 1 water (at least $\pm 35\%$). Nevertheless, the important observation is that the observed divergences are “polarized”, i.e., systematically oriented toward the minimal K_d values inside the range of possible dispersion. This orientation, which is not random, undoubtedly reveals differing composition and optical properties of the biogenous material in the oligotrophic Pacific compared with those in average Case 1 waters.

For the Mediterranean Sea, systematic divergences also occur, yet in the opposite direction (K_d systematically above the average). These deviations are observed in the visible domain; into the UV domain, the results of regression analyses show that the divergences between the two water bodies continue to increase. Another striking difference between these waters lies in the degree of dependency of their UV absorbing materials upon the local and contemporaneous chlorophyll concentration. This dependency appears to be much higher in Pacific waters than in Mediterranean waters, as reflected by their respective exponent $e(\lambda)$ values (cf. Fig. 3b).

Consistently, the reflectance spectra of the two bodies also diverge in the violet-blue and UV part of the spectrum in directions which are predictable from their K_d differences. To various degrees, both the violet-blue and UV reflectances are simultaneously affected by the change in bio-optical properties; therefore, some information is present in the visible reflectance about the properties in the UV domain. Actually, ocean color remote sensing in UV has never been routinely attempted; the rationale for providing the presently in flight

sensors with a channel at 412 nm was nevertheless the possibility of discriminating [Chl] from CDOM, and possibly to extrapolate toward the UV domain. Up to now, the atmospheric correction problem at this wavelength has been a serious obstacle to proceed safely in this direction.

Imbedded within the average “laws” for Case 1 waters (for instance, the $K_d(\lambda) \leftrightarrow [\text{Chl}]$ statistical relationships), certain implicit (and non-linear) relationships between the algal and the non-algal compartments are underlying. The algal compartment is presently quantified through [Chl], i.e., the commonly available (albeit imperfect) index. The non-algal compartment includes both dissolved colored material (CDOM) and particulate materials (various debris plus heterotrophic organisms). The optical variability inside Case 1 waters with respect to the average laws (Gordon and Morel, 1983b, 65–67), originates primarily from the fluctuations in the relative proportions of the algal and non-algal compartments. To a second order, the fluctuations inside each compartment (e.g., differing absorbing characteristics from one phytoplankton assemblage to another one, or differing yellow substance or detritus composition) may also induce an additional variability.

Beside the water absorption, the algal pigment absorption with its typical bands is the dominant factor governing the diffuse attenuation in the visible domain. The optical variability around the average laws is lower here than in the UV domain (cf. the r^2 in Fig. 3c). In this UV domain, the optical role of the algal compartment is comparatively diminishing. The various particles (algal, bacterial, heterotrophic communities, and organic debris) are still contributing to absorption in the UV domain (e.g. Stramski and Kiefer, 1998); their UV spectra are characterized by a broad minimum around 360 nm and below this wavelength, a peak of variable amplitude around 320 nm (likely due to mycosporine-like amino acids (see Arrigo et al., 1998; Laurion et al., 2003)). The main source of attenuation, however, is the colored dissolved organic material (CDOM, or “yellow substance”), which is characterized by a regular and steep slope toward the shortest wavelengths. Varying CDOM concentrations, not tightly correlated to the local and contemporaneous algal abundance, are most probably the major cause of the optical variability in the UV.

The dominance of CDOM is illustrated clearly through some comparative examples (Fig. 8). They are based on Figs. 11 and 12 in Morel et al. (2007a), to which are added results from the Mediterranean Sea with identical [Chl]. The additional panel (8c) provides another couple of data for larger values of [Chl]. Beside the total absorption $a_{\text{tot}}(\lambda)$ (obtained by inversion of $K_d(\lambda)$; see *ibid.*), are plotted the experimentally determined particulate absorption spectra, $a_p(\lambda)$, and also the dissolved absorption spectra, $a_y(\lambda)$, obtained by subtracting both $a_p(\lambda)$ and the pure water absorption, $a_w(\lambda)$, from $a_{\text{tot}}(\lambda)$.

In all situations, the yellow substance absorption is preponderant in the UV domain (and even the violet-blue do-

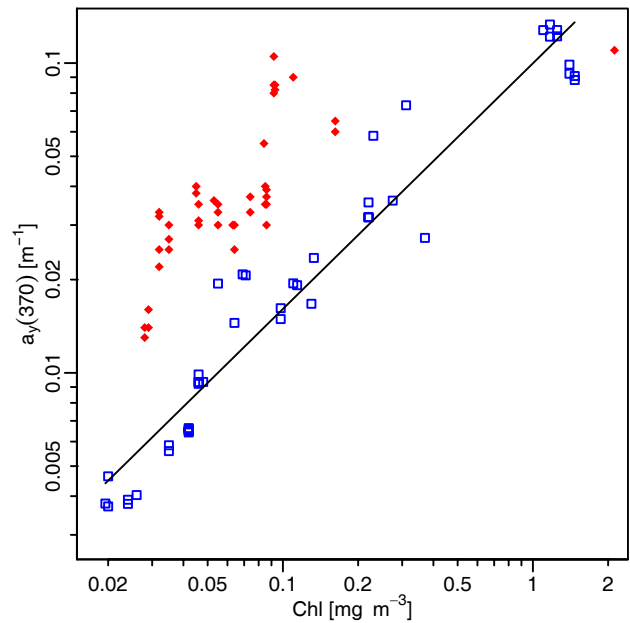


Fig. 9. As a function of [Chl], the CDOM absorption coefficient at 370 nm, for all stations in Pacific (blue symbols, BIOSOPE cruise) and Mediterranean waters (red symbols, PROSOPE and AOPEX cruises). The straight line corresponds to the best fit for the Pacific data only, as already shown in Morel et al. (2007a), which expresses as $a_y(370) = 0.10 [\text{Chl}]^{0.80}$ (with $r^2 = 0.94$ on the log-transform data). Note that the dots beyond 1 mg m^{-3} correspond to waters in the Peruvian (blue) and Moroccan (red) upwelling zones.

main) when compared to the particulate matter absorption. Actually, $a_y(\lambda)$ begins to be smaller than $a_p(\lambda)$ when λ exceeds 425 nm, approximately (and is never smaller at the Mediterranean station AOPEX B1-04). Interestingly, the a_y spectra in the two water bodies are approximately parallel, with an exponential slope around 0.016 nm^{-1} (discussed in Morel et al., 2007a). The difference is in the magnitude of $a_y(\lambda)$; for similar [Chl], the $a_y(\lambda)$ values in the Mediterranean waters are always higher (by a factor 2 or even 3) than in Pacific. Such a systematic difference between the two oceanic zones is clearly seen in Fig. 9 (for $\lambda = 370 \text{ nm}$) which is redrawn from Fig. 13 (*ibid.*), to which the Mediterranean data have been overlaid. A rather loose correlation still exists between the $a_y(370)$ term and [Chl], at least when each zone is considered separately. This is especially true for Pacific waters, maybe because the [Chl] range (2 orders of magnitude) allows a significant trend to be extracted. When all data are pooled together, the covariation almost vanishes (a similar conclusion was drawn by Siegel et al., 2005).

The similarity between this Fig. 9 and the previous Fig. 5 is an interesting feature; compared to the South Pacific waters, the particulate scattering “excess” in Mediterranean waters parallels the “excess” of dissolved absorbing matter. It is tempting to imagine a relation of cause-and-effect, which, however, remains to be demonstrated on the basis of biogeochemical arguments.

4 Conclusions

When examining the natural variability in Case 1 waters, it is necessary to consider separately the visible and the UV domains.

In the visible domain, abundantly documented, it appears that the present data do not exceed the (rather wide) dispersion range already recorded, in particular for the $K_d \leftrightarrow [\text{Chl}]$ relationship. For the two water bodies here studied, the variability is not at random; instead it lies in the systematic character of the observed deviations, either steadily negative (Pacific waters), or positive (Mediterranean waters). Therefore, the generic Case 1 water model is not the most accurate one to describe accurately such local situations. As pointed out by Mobley et al. (2004) “within Case 1 waters, there is a factor-of-two (and sometimes much greater) variability in the values of optical properties for a given chlorophyll value”. The two water bodies examined in this study are demonstrative examples of such situations and of significant departures from the average. This observation does mean that the concept of Case 1 water, or the Chl-based models, fail, but their true significance and their statistically limited validity must be kept in mind. In fact without the use of this concept and in absence of local information, the interpretation of ocean color remote sensing data would have not been possible for about 95% of the oceanic area.

When facing these two rather contrasted situations and geographical zones, the question arises: are we in presence of the end members of the possible variations inside Case 1 waters? This obviously cannot be ascertained, but the consideration of older data may help. These data (the grey dots in Fig. 1, mostly from the Atlantic Ocean) are sometimes superimposed onto or stand between the present Pacific and Mediterranean data. This observation thus suggests a positive answer to the above question, but the consideration of polar waters may lead to another answer (e.g., Reynolds et al., 2001; Stramska et al., 2003).

For the bio-optical state in the UV domain, there is not much information, nor a Case 1 water model. The large differences and variations detected here tend to compromise the reliability of a general model. Actually the notion of Case 1 water, and its usefulness, rest on the dominance of the algal material in shaping the bio-optical properties in the visible part of the spectrum. This dominance no longer exists in the UV; instead, it is replaced by that of the dissolved colored matter, whose origin, life-history, dynamics, and thus resulting concentration, are largely disconnected from the contemporaneous algal presence. According to this argument, comparable environments with respect to [Chl] may largely differ regarding their UV properties. This observation was previously made in the field (Sargasso Sea) regarding the transitional domain of the violet-blue radiation, already affected by this colored matter (Nelson, 1998), and even at global scale via the interpretation of satellite observations (Siegel et al., 2002a and b). In summary, the causes of the natural variability

in Case 1 waters can be identified; as far as the visible domain is concerned, the variability is maintained within limited and already identified bounds. The same causes, however, have an amplified effect in the UV domain and induce more variability, so that the prediction of the optical properties in this spectral domain, if based on the [Chl] index, becomes highly problematic.

Acknowledgements. The HPLC pigment determinations were performed for the PROSOPE cruise by J. Ras, J.-C. Marty, and one of the author (H.C.), and by J. Ras for the BENCAL, AOPEX and BIOSOPE cruises. J. Ras has maintained at a high level the quality control of these pigment determinations throughout this multi-year multi-cruise operation and she is particularly thanked. We acknowledge the help provided at sea by M. Babin, M. Chami, and N. Souaïdia during the radiometric measurements, and E. Leymarie for developing a fast acquisition/processing software dedicated to the spectroradiometers. We are also indebted to Y. Huot for useful comments on a first draft of the present paper.

The crew and officers of the Research Vessels *Thalassa*, *Africana*, *Le Suroit*, and *Atalante* were instrumental in the success of the successive cruises. The financial supports for these campaigns of the Centre National de la Recherche Scientifique and Institut des Sciences de l'Univers (CNRS and INSU), the Marine Coastal Management (MCM, Cape Town, South Africa), the Centre National d'Etudes Spatiales (CNES), the National Aeronautics and Space Administration (NASA), and the European Space Agency (ESA) were essential and much appreciated.

Edited by: E. Boss

References

- Arrigo, K. R., Robinson, D. H., Worthen, D. L., Schieber, B., and Lizotte, M. P.: Bio-optical properties of the southwestern Ross Sea, *J. Geophys. Res.*, 103, 21 683–21 695, 1998.
- Austin, R. W. and Petzold, T. J.: The determination of the diffuse attenuation coefficient of sea water using the coastal zone color scanner, *Oceanography from Space*, Plenum Press, 239–256, 1981.
- Baker, K. S. and Smith, R. C.: Bio-optical classification and model of natural waters, *Limnol. Oceanogr.*, 27, 500–509, 1982.
- Banse, K.: Should we continue to use the 1% light depth for estimating the compensation depth of phytoplankton for another 70 years?, *Limnol. Oceanogr. Bull.*, 13, 49–51, 2004.
- Bricaud, A., Bosc, E., and Antoine, D.: Algal biomass and sea surface temperature in the Mediterranean basin: Intercomparison of data from various satellite sensors, and implications for primary production estimates, *Remote Sens. Environ.*, 81, 163–178, 2002.
- Bricaud, A., Babin, M., Morel, A., and Claustre, H.: Variability in the chlorophyll-specific absorption coefficients of natural phytoplankton: Analysis and parameterization, *J. Geophys. Res.*, 100, 13 321–13 332, 1995.
- Bricaud, A., Morel, A., Babin, M., Allali, K., and Claustre, H.: Variations of light absorption by suspended particles with chlorophyll a concentration in oceanic (Case 1) waters: Analysis

- and implications for bio-optical models, *J. Geophys. Res.*, 103, 31 033–31 044, 1998.
- Buiteveld, H., Hakvoort, J. H. M., and Donze, M.: The optical properties of pure water, *SPIE Ocean Optics XII*, 2258, 174–183, 1994.
- Claustre, H., Morel, A., Hooker, S. B., Babin, M., Antoine, D., Oubelkheir, K., Bricaud, A., Leblanc, K., Quequiner, B., and Maritorena, S.: Is desert dust making oligotrophic waters greener?, *Geophys. Res. Lett.*, 29, 1469, doi:10.1029/2001GL014056, 2002.
- D’Ortenzio, F., Marullo, S., Ragni, M., Ribera d’Alcala, M., and Santoleri, R.: Validation of empirical SeaWiFS algorithms for chlorophyll a retrieval in the Mediterranean Sea: A case study for oligotrophic seas, *Remote Sens. Environ.*, 82, 79–94, 2002.
- Fougnié, B., Henry, P., Morel, A., Antoine, D., and Montagner, F.: Identification and characterization of stable homogeneous oceanic zones: climatology and impact on in-flight calibration of space sensor over Rayleigh scattering, *Ocean Optics XVI*, Santa Fe, NM, 18–22 November, 2002.
- Gordon, H. R.: Can the Lambert-Beer law be applied to the diffuse attenuation coefficient of ocean water?, *Limnol. Oceanogr.*, 34, 1389–1409, 1989.
- Gordon, H. R. and Morel, A.: Remote sensing of ocean color for interpretation of satellite visible imagery; A review, Springer verlag, 114 pp., 1983
- Gordon, H. R., Brown, O. B., Ewans, R. H., Brown, J. W., Smith, R. C., Baker, K. S., and Clark, D. K.: A semi-analytical radiance model of ocean color, *J. Geophys. Res.*, 93, 10 909–10 924, 1988.
- Laurion, I., Blouin, F., and Roy, S.: The quantitative filter technique for measuring phytoplankton absorption; Interference by MAAs in the UV waveband, *Limnol. Oceanogr. Methods*, 1, 1–9, 2003.
- Lee, Z. P. and Hu, C.: Global distribution of case-1 waters: An analysis from seawifs measurements, *Remote Sens. Environ.*, 101, 270–276, 2006.
- Loisel, H. and Morel, A.: Light scattering and chlorophyll concentration in Case 1 waters: A reexamination, *Limnol. Oceanogr.*, 43, 847–858, 1998.
- Mobley, C. D., Stramski, D., Bissett, W. P., and Boss, E.: Optical modeling of ocean waters: Is the case 1-case 2 classification still useful?, *Oceanography*, 12, 61–67, 2004.
- Morel, A.: Optical properties of pure water and pure seawater, in: *Optical Aspects of Oceanography*, edited by: Steeman-Nielsen, N. G. J. E., Academic, 1–24, 1974.
- Morel, A.: Optical modeling of the upper ocean in relation to its biogenous matter content, *J. Geophys. Res.*, 93, 10 749–10 768, 1988.
- Morel, A. and Berthon, J.-F.: Surface pigments, algal biomass profiles, and potential production of the euphotic layer: Relationships reinvestigated in view of remote sensing applications, *Limnol. Oceanogr.*, 34, 1545–1562, 1989.
- Morel, A., Gentili, B., Chami, M., and J. Ras: Bio-optical properties of high chlorophyll Case 1 waters, and of yellow-substance-dominated Case 2 waters, *Deep-Sea Res. I*, 53, 1439–1559, 2006.
- Morel, A. and Maritorena, S.: Bio-optical properties of oceanic waters: A reappraisal, *J. Geophys. Res.*, 106, 7163–7180, 2001.
- Morel, A. and Gentili, B.: Radiation transport within oceanic (Case 1) water, *J. Geophys. Res.*, 109, C06008, doi:10.1029/2003JC002259, 2004.
- Morel, A., Gentili, B., Claustre, H., Babin, M., Bricaud, A., Ras, J., and Tìèche, F.: Optical properties of the “clearest” waters, *Limnol. Oceanogr.*, 52, 217–229, 2007a.
- Morel, A., Huot, Y., Gentili, B., Werdell, P. J., Hooker, S. B., and Franz, B. A.: Examining the consistency of products derived from various ocean color sensors in open ocean (Case 1) waters in the perspective of a multi-sensor approach, *Remote Sens. Environ.*, 111, 69–88, doi:10.1016/j.rse.2007.03.012, 2007b.
- Nelson, N. B., Siegel, D. A., and Michaels, A. F.: Seasonal dynamics of colored dissolved material in the Sargasso Sea, *Deep-Sea Res. I*, 45, 931–957, 1998.
- Preisendorfer, R. W.: Application of radiative transfer theory to light measurement in the sea, *IUGG Monography*, 10, 11–30, 1961.
- Ras, J., Uitz, J., and Claustre, H.: Spatial variability of phytoplankton pigment distribution in the South East Pacific, *Biogeosciences Discuss.*, 4, 3409–3451, 2007, <http://www.biogeosciences-discuss.net/4/3409/2007/>.
- Reynolds, R. A., Stramski, D., and Mitchell, B. G.: A chlorophyll-dependent semianalytical reflectance model derived from field measurements of absorption and backscattering coefficients within southern ocean, *J. Geophys. Res.*, 106, 7125–7138, 2001.
- Ryther, J. H.: Photosynthesis in the ocean as a function of light intensity, *Limnol. Oceanogr.*, 1, 61–70, 1956.
- Siegel, D. A., Maritorena, S., Nelson, N. B., Hansell, D. A., and Lorenzi-Kayser, M.: Global ocean distribution and dynamics of colored dissolved and detrital organic material, *J. Geophys. Res.*, 107(C12), 3328, doi:1029/2001JC000965, 2002.
- Siegel, D. A., Maritorena, S., Nelson, N. B., and Behrenfeld, M. J.: Independence and interdependencies of global ocean color properties: Reassessing the bio-optical assumption, *J. Geophys. Res.*, 110, C07011, doi:10.1029/2004JC002527, 2005a.
- Siegel, D. A., Maritorena, S., Nelson, N. B., Behrenfeld, M. J., and McClain, C. R. Colored dissolved organic matter and its influence on the satellite-based characterization of the ocean biosphere, *Geophys. Res. Lett.*, 32, L20605, doi:10.1029/2005GL024310, 2005b.
- Smith, R. C. and Baker, K. S.: Optical properties of the clearest natural waters (200–800 nm), *Appl. Opt.*, 20, 177–184, 1981.
- Stramska, M., Stramski, D., Hapter, R., Kaczmarek, S., and Ston, J.: Bio-optical relationships and ocean color algorithms for the north polar region of the atlantic, *J. Geophys. Res.*, 108(C5), 3143, doi:10.1029/2001JC001195, 2003.
- Stramski, D. and Kiefer, D. A.: Can heterotrophic bacteria be important to marine absorption?, *J. Plankton Res.*, 20, 1489–1500, 1998.
- Tyler, J. E.: Report on the the second meeting of the joint group of experts on photosynthetic radiant energy, *UNESCO Technical Papers in Marine Science*, 5, 1–11, 1966.
- Uitz, J., Claustre, H., Morel, A., and Hooker, S. B.: Vertical distribution of phytoplankton communities in open ocean: An assessment based on surface chlorophyll, *J. Geophys. Res.*, 111, C08005, doi:10.1029/2005JC003207, 2006.