



HAL
open science

Evolution of the potential distribution area of french mediterranean forests under global warming

Cédric Gaucherel, Joel Guiot, L. Misson

► **To cite this version:**

Cédric Gaucherel, Joel Guiot, L. Misson. Evolution of the potential distribution area of french mediterranean forests under global warming. *Biogeosciences Discussions*, 2008, 5 (1), pp.573-603. hal-00330283

HAL Id: hal-00330283

<https://hal.science/hal-00330283>

Submitted on 18 Jun 2008

HAL is a multi-disciplinary open access archive for the deposit and dissemination of scientific research documents, whether they are published or not. The documents may come from teaching and research institutions in France or abroad, or from public or private research centers.

L'archive ouverte pluridisciplinaire **HAL**, est destinée au dépôt et à la diffusion de documents scientifiques de niveau recherche, publiés ou non, émanant des établissements d'enseignement et de recherche français ou étrangers, des laboratoires publics ou privés.

Biogeosciences Discussions is the access reviewed discussion forum of *Biogeosciences*

**Mediterranean
forests under global
warming**

C. Gaucherel et al.

Evolution of the potential distribution area of french mediterranean forests under global warming

C. Gaucherel¹, J. Guiot², and L. Misson³

¹INRA, UMR AMAP, TA A.51 / PS2, 34398, Montpellier, France

²CEREGE – UMR 6635 CNRS Univ. P. Cézanne – BP 80, 13545 Aix-en-Provence Cedex 4, France

³CEFE – UMR 5175 CNRS, 1919 Route de Mende – 34293 Montpellier Cedex 5, France

Received: 14 November 2007 – Accepted: 30 November 2007 – Published: 8 February 2008

Correspondence to: C. Gaucherel (gaucherel@cirad.fr)

Title Page

Abstract

Introduction

Conclusions

References

Tables

Figures

◀

▶

◀

▶

Back

Close

Full Screen / Esc

Printer-friendly Version

Interactive Discussion

Abstract

This work aims at understanding future spatial and temporal distributions of tree species in the Mediterranean region of France under various climates. We focused on two different species (*Pinus Halepensis* and *Quercus Ilex*) and compared their growth under the IPCC-B2 climate scenario in order to quantify significant changes between present and future. The influence of environmental factors such as atmospheric CO₂ increase and topography on the tree growth has also been quantified.

We modeled species growths with the help of a process-based model (MAIDEN), previously calibrated over measured ecophysiological and dendrochronological series with a Bayesian scheme. The model was fed with the ARPEGE – MeteoFrance climate model, combined with an explicit increase in CO₂ atmospheric concentration. The main output of the model gives the carbon allocation in boles and thus tree production.

Our results show that the MAIDEN model is correctly able to simulate pine and oak production in space and time, after detailed calibration and validation stages. Yet, these simulations, mainly based on climate, are indicative and not predictive. The comparison of simulated growth at end of 20 and 21 centuries, show a shift of the pine production optimum from about 650 to 950 m due to 2.5°K temperature increase, while no optimum has been found for oak. With the direct effect of CO₂ increase taken into account, both species show a significant increase in productivity (+26 and +43% for pine and oak, respectively) at the end of the 21 century.

While both species have complementary growth mechanisms, they have a good chance to extend their spatial distribution and their elevation in the Alps during the 21 century under the IPCC-B2 climate scenario. This extension is mainly due to the CO₂ fertilization effect.

BGD

5, 573–603, 2008

Mediterranean forests under global warming

C. Gaucherel et al.

Title Page

Abstract

Introduction

Conclusions

References

Tables

Figures

◀

▶

◀

▶

Back

Close

Full Screen / Esc

Printer-friendly Version

Interactive Discussion

EGU

1 Introduction

Forest productivity and distribution changes in the coming decades are a major concern of ecological studies. Differential impacts of global climatic changes or increasing atmospheric CO₂ concentration, as well as complex vegetation feedbacks on climate makes it hard to estimate the vegetation patterns in future (Prentice and Webb, 1998; Sitch et al., 2003). It is particularly true in Mediterranean region which has a limited area but with a high diversity of environments, vegetation and fauna (Joffre et al., 1999). Forests in this region are crucial for preserving this biodiversity and provide essential ecosystem services, such as soil protection, water conservation and climate regulation (Eamus et al., 2005). Circulation models predict a significant warming and decrease in precipitation in the Mediterranean basin (Gibelin and Deque, 2003). (Giorgi, 2006) identified the Mediterranean basin as the most prominent hot-spot of climate change over the world with more than 20% decline of precipitation over April to September. These changes can trigger a positive feedback on climate change by decreasing CO₂ sequestration in ecosystems (Ciais et al., 2005).

Assessment of climatic change impacts must be supported by accurate and reliable models of climate-vegetation growth relationships (Misson, 2004; Misson et al., 2004; Rathgeber et al., 2003). These models must be carefully calibrated and validated on data at different time and space scales. At large spatial scales, these data may come from field-based studies on natural gradients (Rathgeber et al., 2005). To include the time variability at these gradient, dendrochronological series are valuable as an exploratory tool for identifying relevant climatic variables and periods when tree growth is responding to climate (Tessier, 1989) or as a support to modelling (Misson, 2004; Rathgeber et al., 2005; Rathgeber et al., 2000). At smaller space and time scale, field data (Rathgeber et al., 2005) and/or coupled micro-meteorological and biogeochemical data measured at fine resolution in forest stations (Misson, 2004) are essential to understand eco-physiological processes of the water and carbon cycles in the ecosystem.

BGD

5, 573–603, 2008

Mediterranean forests under global warming

C. Gaucherel et al.

Title Page

Abstract

Introduction

Conclusions

References

Tables

Figures

◀

▶

◀

▶

Back

Close

Full Screen / Esc

Printer-friendly Version

Interactive Discussion

EGU

Modelling approaches are diverse. Some of them have focused either on ecophysiological processes (Anselmi et al., 2004) or on spatial patterns by the use of statistical relationships (Luoto et al., 2005). We intend here to simultaneously investigate both issues. We explore the geographical distribution of two common Mediterranean species:

5 Aleppo pine (*Pinus halepensis*M.) and evergreen Holm oak (*Quercus ilex*L.) by using an ecophysiological model (MAIDEN, (Misson et al., 2004). Several parameters of this model need to be calibrated. This has been done independently (Gaucherel et al., 2007) for both species using a Bayesian approach. These calibrations used fine time scale ecophysiological measurements made in one forest station (Lamanon) and large
10 spatio-temporal scale dendrochronological data collected in a relatively large region (southeast France). This model is driven here, for the South-East France region, by climate simulations for the 21 century, at the daily time step using the Global Climate Model ARPEGE for the IPCC-B2 scenario (Deque et al., 1994). In addition, the fertilization effect of CO₂ is assessed by comparing simulations with constant and with
15 variable CO₂ concentration.

Our main assumptions for this work are common to other similar works (Yu et al., 2002): forests are mature, they do not genetically adapt to climatic changes, their colonization process is quick enough relatively to climate changes to neglect their population dynamics. Moreover, we only focus on potential distribution areas, neglecting
20 human impacts (Debusche et al., 1999). The objectives of this work are threefold: i) to estimate the tendency of both Mediterranean species growth for the 21 century and to compare them to the past (20 century) in order to detect significant changes; ii) to quantify the influence of environmental factors such as CO₂ increase on the tree growth according to the topography, the other external factors, such as soil composition, being
25 considered as fixed and uniform over the entire region; iii) to quantitatively compare both species behavior regarding to climate/topography/ CO₂ concentration changes, thus helping to extrapolate our results.

BGD

5, 573–603, 2008

**Mediterranean
forests under global
warming**

C. Gaucherel et al.

Title Page

Abstract

Introduction

Conclusions

References

Tables

Figures

◀

▶

◀

▶

Back

Close

Full Screen / Esc

Printer-friendly Version

Interactive Discussion

EGU

2 Data and materials

2.1 Dendrochronological and ecophysiological data

We use dendrochronological data from 21 Aleppo pine (*P. halepensis*) stands (Nicault, 1999) and one typical Holm oak (*Q. ilex*) stand (unpublished data sampled in the Puéchabon site (Rambal et al., 2003)). All sites are located on calcareous soil in PACA region (Long. 0–8° N × Lat. 41.5–46.5° N), southeast France. The pine tree-ring series are based on the annual earlywood width (E_w), the latewood width (L_w), the earlywood density (E_d) and the latewood density (L_d), which are combined into a biomass index, $W(t)$, taking into account for both stem radial growth and wood density (Rathgeber et al., 2000). They have been averaged into a 34-year regional chronology. The 38-year oak series is more local as it is based on a single site. Both mean series will be used to calibrate some parameters of the MAIDEN tree-growth model. Botanical, ecological and topographical factors were also recorded at each stand (Rathgeber et al., 2005) and used to help in calibrating several physiological processes. Two years, 1956 and 1985, are characterized by extremely low winter temperature for the region (much below the freezing level), which induced partial damaging of the cambium and had strong impacts on the growth during three years. As these processes are not integrated in the model, years 1956–1958 and 1985–1987 have been removed from the dataset. In addition, we used the averaged biomass index of each 21 stands over the first 50 y (R50) as an index of the unbiased fertility of the stand. R50 is computed by summing $W(t)$ of each tree over the first 50 y and then averaging them over the stand. Although this index could still be influenced by stand density, it offers a synthetic idea of the spatial distribution of pine production (Rathgeber et al., 2005).

At two sites, one in *P. halepensis* and one in *Q. ilex*, tree transpirations were measured continuously at 1/2 h time step for one year using the heat dissipation method (Granier, 1987). Xylem sap flux density ($l\ H_2O\ h^{-1}\ dm^{-2}$ sapwood) was monitored on 6 trees in the two plots. The sampled trees were representative of the plots' mean basal area tree circumference. The sap flow sensors consist in a pair of probes, 2 cm long

BGD

5, 573–603, 2008

Mediterranean forests under global warming

C. Gaucherel et al.

Title Page

Abstract

Introduction

Conclusions

References

Tables

Figures

◀

▶

◀

▶

Back

Close

Full Screen / Esc

Printer-friendly Version

Interactive Discussion

EGU

and 0.2 cm in diameter each, inserted in a radial orientation separated vertically by 12 cm behind the cambial zone. The temperature difference between the heated and reference probes (ΔT) was recorded and sap flux density was calculated according to (Granier, 1985). Up-scaling from tree to stand was based on the estimation of the stand sapwood area.

2.2 Ecophysiological model

The process-based tree-growth model MAIDEN is extensively described in (Misson, 2004; Misson et al., 2004; Vincke et al., 2005). The model calculates processes such as photosynthesis, stomatal conductance and carbon allocation. The water balance is computed at the ecosystem level, including canopy water interception, transpiration, soil evaporation, soil water transfer, drainage and runoff. MAIDEN separates daily net primary production (NPP) between carbon reservoirs (leaf, bole, root and storage) according to phenological phase-dependent rules. These phases are (1) winter: no activity, (2) spring: leaf and root expansion, (3) summer: bolewood production, (4) early falls: carbohydrate-reserve accumulation, (5) late fall: leaf and root senescence. An original modeling procedure of carbon storage and mobilization was developed to reproduce the autocorrelation structure of tree-ring series (Guiot, 1986). The annual increment of bole carbon reservoir at stand level is the modeled variable that will be compared with the observed dendrochronological tree-ring series. To be applied to a given species at a given site, it needs several input variables such as altitude, latitude, maximum absolute Leaf Area Index (LAI), specific leaf area, initial bole biomass, soil thickness and soil textural classes, which can be obtained from site measurements. Moreover, it also needs eleven internal parameters that can be tuned to fit at best available ecophysiological and dendrochronological data, as explained in (Gaucherel et al., 2007). Climatic driving variables are daily minimum and maximum temperature and precipitations. MAIDEN uses the MT-CLIM algorithm (Running et al., 1987) to estimate daily solar radiation and vapor pressure deficit from daily temperature and precipitations.

BGD

5, 573–603, 2008

Mediterranean forests under global warming

C. Gaucherel et al.

Title Page

Abstract

Introduction

Conclusions

References

Tables

Figures

◀

▶

◀

▶

Back

Close

Full Screen / Esc

Printer-friendly Version

Interactive Discussion

EGU

2.3 Climatic scenarios

Observed daily temperatures and precipitation series are obtained from the METEO-France meteorological station of Aix-en-Provence. Climatic simulations for the 20 and 21 centuries are obtained from the global climate model ARPEGE-IFS (hereafter APG (Gibelin and Deque, 2003)) driven by the IPCC-B2 scenario radiative forcing (including greenhouse gases, CO₂, CH₄, N₂O, CFC, water vapor, ozone, and five types of aerosols). Doubling of atmospheric CO₂ concentration occurs towards the end of the 21 century with 610 ppm, while the 20 century concentrations are the observed values (IPCC, 2001). Description of the model is given in (Deque et al., 1994) and (Gibelin and Deque, 2003). The APG model, for which the time step is 30 minutes, provides daily maximum and minimum air temperatures as well as daily precipitations for the 1960–2099 period. The grid point used has a 0.5°×0.5° cell size that we have interpolated as a function of latitude and longitude using a two-dimensional (2-D) bi-cubic technique.

We used the Climate Research Unit (CRU) gridded dataset (New et al., 1999) over the 1960–1998 control period to estimate possible biases of the APG simulation and correct it during the 21 century. This surface climatology has also a 0.5°×0.5° resolution and has been interpolated for visualisation comfort in the same way than the APG fields. Although having the same resolution, the CRU grid does not perfectly superimpose with the APG grid: to obtain comparable data over the whole region, temperature and precipitation fields have been systematically corrected by associating the nearest grid points between the two grids (thus without any interpolation). The maximum and minimum temperature and precipitation fields simulated by the APG model are finally compared with the 1960–1998 CRU climatology over South East France (New et al., 1999). In addition, the regional topography is available with gridpoints ranging from 0 to 2200 m elevation in Pyrenees and Alps mountains.

BGD

5, 573–603, 2008

Mediterranean forests under global warming

C. Gaucherel et al.

Title Page

Abstract

Introduction

Conclusions

References

Tables

Figures

◀

▶

◀

▶

Back

Close

Full Screen / Esc

Printer-friendly Version

Interactive Discussion

EGU

3 Methods

3.1 Ecophysiological calibration and simulation

Bayesian techniques such as Monte Carlo Markov Chains (MCMC) offer the opportunity to estimate the (a posteriori) distribution of the calibration parameters, starting from their predefined (a priori) statistical distributions (Andrieu et al., 2001; Gelman et al., 1995). We basically proceeded in two main stages. The a priori distributions are assumed to be uniform with a very large range. First, the range of six parameters controlling the ecophysiological processes has been narrowed by using the MCMC algorithm and the transpiration observations available for both species. This method provided us with an a posteriori probability distribution and then a 90% confidence interval for each parameter. The limits of this interval have been used to define the a priori limits used in the second stage in which the eleven parameters (the six ones calibrated in the first stage, plus the five remaining ones related to carbon allocation processes) have been calibrated on the observed dendrochronological time series. For each calibration, adapted convergence tests proposed by the BUGS project (Spiegelhalter et al., 1993) have been implemented. We performed detailed elasticity tests of the model to estimate possible misspecifications of model's components, as well as validation on independent meteorological data to detect possible over-parameterization (Gaucherel et al., 2007). Finally, the model fit (determination coefficient r^2) between observations and simulation modes, after five draws of 5000 steps each, converges and summarizes the modeling efficiency.

The eleven parameters are species dependent and valid for the whole region. After the calibration stage, only climatic variables and CO₂ atmospheric concentration vary in time. Other parameters are site dependent: soil properties, topography, elevation and coordinates (for radiative process estimation). We choose averaged regional soil textures for the four soil layers (being 10, 20, 20 and 10 cm deep, respectively): percentages of clay (25, 30, 35, 35, resp.) and sand (10, 15, 20, 20, resp.) (Misson et al., 2004). Ecophysiological simulations are made for mature stands such that the

BGD

5, 573–603, 2008

Mediterranean forests under global warming

C. Gaucherel et al.

Title Page

Abstract

Introduction

Conclusions

References

Tables

Figures

◀

▶

◀

▶

Back

Close

Full Screen / Esc

Printer-friendly Version

Interactive Discussion

EGU

only biomass gain between years is caused by the bole carbon allocation. The CO₂ atmospheric concentration has an influence on the climate and is taken into account by the climate models, but it has also a direct effect in the tree-growth model, called also fertilization effect because it stimulates the photosynthesis and reduces the water loss through the stomata.

3.2 Regionalization

APG simulations cannot be directly used as inputs in the MAIDEN model because they are affected by some systematic biases. They have been corrected with the CRU data at every gridpoint and for every month of the studied period, by using the temporal discrepancies between both data sets over the common period (1960–1997). APG temperatures (resp. precipitations) are corrected by adding to daily values the difference (resp. ratio) between APG and CRU means of the corresponding month. No topographical correction has been applied on APG variable values as both data sets present similar topography.

3.3 Simulation validation

R50 index and simulated bole increment for pine species will also be compared in order to assess our model ability to simulate spatial variability of tree-growth, after interpolation using a 2-D bicubic interpolation for southeast France. The assessment of the climate impact on tree-growth is based on the comparison between two periods of 38 years each: 1960–1997 (hereafter called 20 century period) and 2062–2099 (21 century period). The direct impact of CO₂ is based on the comparison on the 21 century with and without taking into account for the CO₂ increase at the input of the MAIDEN model. Runs without CO₂ increase means that the 1995 CO₂ concentration (360 ppm) has been used for the whole 21 century. The vulnerability of both species is assessed by comparing the maps of their simulations for both periods and the time series of their averaged bole increments.

BGD

5, 573–603, 2008

Mediterranean forests under global warming

C. Gaucherel et al.

Title Page

Abstract

Introduction

Conclusions

References

Tables

Figures

◀

▶

◀

▶

Back

Close

Full Screen / Esc

Printer-friendly Version

Interactive Discussion

EGU

4 Results

4.1 Ecophysiological and dendrochronological calibration

The differences (mean absolute values in mm/d) between observed and simulated transpiration over year 2004 is low and reach 4% for pine and 6% for oak (not shown). This discrepancy does not seem to be due to the parameter values as both observation and simulation curves present the same seasonal variations, but rather due to a higher soil depth inducing a lower simulation of the soil water stress. The bole C allocation of the pine is around 650 ± 50 g/mm² and around 250 ± 40 g/mm² for the oak.

The pine MCMC calibration of MAIDEN model with PACA dendrochronological series shows a modal fit at $r^2 = 0.37 \pm 0.04$ (Fig. 1). The oak MCMC calibration of MAIDEN model with the Puéchabon dendrochronological series shows a modal fit at $r^2 = 0.50 \pm 0.06$. Details on the calibration are given in (Gaucherel et al., 2007). Differences between the calibrated bole increment simulation and the observations are quite homogeneous, showing the ability of the model to simulate a large variability of growth (Fig. 1), while the oak growth is better fitted than the pine growth. It can be due to the negative trend of the oak growth observed since the beginning of the year 70's. The fact that the model is able to simulate this trend could confirm its climatic origin. As additional and independent validation, gridded pine R50 values and simulated bole increment are compared and show a correct agreement (Fig. 2). Maxima are located at the centre of both maps, even if R50 have two maxima and simulation maximum is slightly shifted westward by about 30 km.

4.2 Climate regionalization

Temperature and precipitation data for CRU and APG climatology are rather similar over the 38 common y in average (Table 1), but the APG simulations are more variable from month to month. Both temperature data sets show a lapse rate of about -0.0065 K/m. Spatial temperature and precipitation simulated distribution (not shown)

BGD

5, 573–603, 2008

Mediterranean forests under global warming

C. Gaucherel et al.

Title Page

Abstract

Introduction

Conclusions

References

Tables

Figures

◀

▶

◀

▶

Back

Close

Full Screen / Esc

Printer-friendly Version

Interactive Discussion

EGU

are also more scattered, probably due to the fact that each APG gridpoint is a punctual value rather than a cell-grid average. The mean annual deviation (resp. ratio) between APG and CRU datasets over this control period is $+3.18 \pm 1.68$ K for mean temperature (resp. 0.82 ± 0.47 for rainfall) and for the whole studied region. Note that these averaged values are not exactly equal with differences between lines of Table 1, as calculations before averaging stage are made separately for each grid points and each month.

APG simulations for the 21 century are corrected using monthly and spatially dependent deviation (or ratio) coefficients (Table 2). Temperature (Fig. 3a) and precipitation (Fig. 3b) values of the 2062–2099 period are significantly higher than those of the 1960–1997 period. Mean annual deviations of daily maximum and minimum temperatures are $+2.62 \pm 0.66$ K and $+2.27 \pm 0.54$ K, respectively, while mean annual precipitation will increase by a factor 1.75 ± 0.98 . The temperature diurnal amplitude (max – min) will also decrease with elevation. Precipitation patterns between both periods are very different at high elevations (almost a factor three) and similar at low elevations (Fig. 3b).

4.3 Pine growth

Pine growth simulated for the 20 century with a CO_2 concentration increasing from 317 ppm (in 1960) to 360 ppm (1995), as expected, shows less productive zones at higher elevations where temperature is less favorable (Fig. 4a). For the 21 century, there will be a negligible mean decrease of about $-2.72 \pm 4.57\%$ compared to the first period. This hides a large spatial variability with increase up to $+8\%$ at high elevations (Fig. 4b). If we take into account the direct effect of atmospheric CO_2 (rising up to 612 ppm at the end of the 21 century), growth pattern will be very different (Fig. 5a): a mean increase of about $+22.24 \pm 4.14\%$, with maxima at about $+30\%$ at intermediate elevations. Moreover, in relative values, low elevations are the most favored by the direct fertilizing effect (Fig. 5b). The average gain due to CO_2 is about $+26.01 \pm 3.68\%$ with a significant relative productivity loss of about 0.8% per 100 m elevation (up to the highest grid-point at elevation 2200 m). This difference between pine production

Title Page

Abstract

Introduction

Conclusions

References

Tables

Figures

◀

▶

◀

▶

Back

Close

Full Screen / Esc

Printer-friendly Version

Interactive Discussion

simulation with and without direct CO₂ effect is linear in time and of about 0.34% per y. With CO₂ direct effect too, pine production is maximum at intermediate elevation, where the climate is a transition between warm and dry plains and cool and wet mountains (Fig. 5a). Pine growth seems to be optimum nowadays for elevation comprised below 800 m (Fig. 6a), while this optimum is shifted up to 1100 m for the 21 century (Fig. 6b), whatever is the CO₂ factor used. The twenty-year window moving average curves (Fig. 7a) show that pine growth reaches a maximum for present if we keep CO₂ constant during the 21 century, while it continues to increase if CO₂ increases according to the IPCC B2 scenario. The productivity increase seems to be constant, or weakly slowing down, at the end of 21 century (Fig. 7a). This increase over 100 y reaches 30% in average for the region, with a maximum at intermediate elevation.

4.4 Oak growth

Simulations of oak growth for 20 century without CO₂ direct effect show a weak spatial variability and much lower (two times) productivity than pine (Fig. 8a). Oak mean growth simulation during the 21 century period decreases by about $-13.8 \pm 4.8\%$ compared to the control period, but reaches a value of -25% in some low elevation zones (Fig. 8b). The differences between both periods are much more important for oak than for pine. If we include the direct effect of atmospheric CO₂ (Fig. 9a), mean oak growth increases by about $+24.1 \pm 5.6\%$ and reaches a value of about $+43\%$ at high elevations. The spatial distribution is quite homogenous regarding to the elevation factor. Oak does not show any optimum with elevation (Fig. 6c, d). The gain due to CO₂ direct effect is optimum at low elevations (Fig. 9b). As highlighted by the twenty-year window moving average curve, the trend of regional oak growth with and without CO₂ direct effect (Fig. 7b), has the same general behavior than for pine: a progressive productivity increase throughout the 21 century with CO₂ direct effect versus a decrease with constant CO₂. This increase over 100 y reaches 50% in average for the region, and even more at low elevation. Tree growth evolution for constant CO₂ concentration reaches a maximum around year 2005 for both species (Fig. 7). The simplified drought

BGD

5, 573–603, 2008

Mediterranean forests under global warming

C. Gaucherel et al.

Title Page

Abstract

Introduction

Conclusions

References

Tables

Figures

◀

▶

◀

▶

Back

Close

Full Screen / Esc

Printer-friendly Version

Interactive Discussion

EGU

index of Fig. 6c (temperature/precipitation ratio) smoothed with a twenty year moving window confirms that the period around 2005 is simulated as the most humid of the analyzed period. Afterwards, drought increases considerably, inducing an important growth deficit if CO₂ direct effect does not compensate it.

5 Discussions

5.1 Climate and growth modelling

The distribution of precipitation corrections (computed between CRU and APG data sets for the twentieth reference period) is highly heterogeneous in space (Fig. 3b). This is possibly due to difficulties to precisely simulate frequent and local raining events in Mediterranean climate (West et al., 1986). The precipitation changes are only significantly positive above 500 m, for the benefit to the tree growth. This is obvious for Alps and in a much lower extent for Pyrenees mountains. For temperature, Alps and Pyreneans do not behave in the same way: temperature anomalies will decrease with elevation in the Alps, and increase in the Pyreneans (not shown), amplifying so the constraints.

The MAIDEN model, after calibration, has shown a correct ability to simulate tree growth of pine and oak species under various environmental conditions (Fig. 1). Some previous works succeeded in such modeling using remote sensing (LAI) calibration (Anselmi et al., 2004). Our approach is, in a way, different and original, as we have calibrated a complex ecophysiological model, using dendrochronological time series (Gaucherel et al., 2007). The simulations are generally realistic from 1960 to 1997. But some short periods (such as 1985–1987) are poorly simulated, mainly due to factors not included in the model, as cold winters that could have damaged the cambium cells of tree bole. The model calibration is based on the mean regional tree-ring chronology, and an independent validation has been designed on the spatial variability of the tree-growth. The spatial distribution of the pine R50 indices has been successfully

Title Page

Abstract

Introduction

Conclusions

References

Tables

Figures

◀

▶

◀

▶

Back

Close

Full Screen / Esc

Printer-friendly Version

Interactive Discussion

compared to the spatial distribution of the simulations.

Tree growth simulations are only regional trends and are still too broad to take into account for detailed abiotic factors such as soil characteristics. Nevertheless, spatial and temporal trends have been clearly identified. If we do not take into account for CO₂ fertilization effect, we find that tree growth has reached a maximum around year 2005 for both species (Fig. 7): this should not be taken as a precise date for the optimum of these species; it rather shows that the climate changes will not benefit to these species in the future in terms of ecophysiological processes.

Some assumptions made in this work have to be discussed. Simulated distribution areas are potential distributions, which do not taken into account any history of species colonization nor human influences (Debussche et al., 1999). The present distribution of both species only covers a small fraction of these potential areas (approximately 15% for pine and 25% for oak) (Figs. 5a and 8a, dashed lines). These distributions will likely extend or shift during the coming decades, as it has been simulated for example for broadleaf forests in China by similar approaches (Yu et al., 2002). For clarity too, we have chosen not hiding on maps high elevations at which tree species would not be able to grow due to freeze. Furthermore, another hypothesis behind our results is that there is no population dynamics included in the model, such as metapopulation processes (Rétho et al., 2007), and that species colonization is more rapid than climate dynamics. In case of low colonization rate, the driving factor of the potential distribution is no longer the climate, but the dispersion rate and its modulation by environmental factors (Hanski and Ovaskainen, 2000; Sitch et al., 2003). Our simulations, mainly based on climate, are then indicative and not predictive.

5.2 Environmental factors

Topography: the pine species production shows a significant optimum for intermediate elevations (around 650 m, Fig. 6a), indicating that pine does not accommodate with low temperatures. The oak species production increases with elevation without any optimum, thus directly benefiting of precipitation increase in mountainous areas

BGD

5, 573–603, 2008

Mediterranean forests under global warming

C. Gaucherel et al.

Title Page

Abstract

Introduction

Conclusions

References

Tables

Figures

◀

▶

◀

▶

Back

Close

Full Screen / Esc

Printer-friendly Version

Interactive Discussion

EGU

(Fig. 6c). Several processes that are not taken into account in our simulations are able to stop the oak progression at higher elevations: competition with other species and embolism of main vessels after winter colds. Our model simulates a shift of the pine production optimum at about 950 m (Fig. 6b), due to 2.5 K temperature increase. This is particularly true if temperature during the warm part of the year is the main control of forest limit in temperate zones (Jobbagy and Jackson, 2000). Hence, both species will be favored during the twenty first century and colonize higher elevations than occupied today, but for different reasons: pine species will climb up because it is not yet at its future optimum, oak species because it has no optimum.

CO₂ concentration: without any direct fertilization effect of atmospheric CO₂, both species show weak changes in their distribution area: -3 and -14% for pine and oak respectively in average for the region (Figs. 4b and 8b). At least it is hard in our simulations to maintain species in plains (particularly for oak species). With the direct effect of CO₂, both species have a significant increase in productivity: +26 and +43% for pine and oak respectively (Figs. 5b, 9b). This fertilizing effect even has a stronger impact than climate change. Higher CO₂ concentration allows the tree to close its stomata, leading to a better efficiency in the water use, even if the water budget decreases, such as after year 2030. We are confident about the simulation of this forcing because CO₂ fertilizing effect has been calibrated and validated by using the observed atmospheric CO₂ concentrations for the 20 century. In addition, the direct effect of CO₂ tends to reinforce the productivity/topography relationships and in particular the oak (r^2 shifting from 0.38 to 0.54). Finally, the direct effect of CO₂ will modify deeply the distribution areas of both species. Both species will certainly maintain in plains at low elevations, mainly thanks to the CO₂ fertilization, but this is more heterogeneous in space for oak species (Figs. 5b, 9b).

5.3 Species comparison (Oak – Pine)

For pine and oak species, productivity increases by about +22 and +26% in the twenty first century under direct effect of CO₂. Both productivities will increase at a rate of

**Mediterranean
forests under global
warming**

C. Gaucherel et al.

Title Page

Abstract

Introduction

Conclusions

References

Tables

Figures

◀

▶

◀

▶

Back

Close

Full Screen / Esc

Printer-friendly Version

Interactive Discussion

about 0.35% per year (Fig. 7). Nevertheless, model simulates a climatic optimum elevation at about 1000 m for pine while such optimum is not modeled for oak. This difference is probably due to the way each species beneficiate of temperature and precipitation. These species are representative of two functional types extensively found in the Mediterranean: the oak is an evergreen sclerophyllous often found in secondary successions, and the pine is drought-adapted conifer and a colonizing species. They have a very different physiological response to drought, which lead to contrasted ecosystem functioning: *P. halepensis* is typically drought-avoiding water-saving, whereas *Q. ilex* is more tolerant to precipitation variability (Ferrio et al., 2003; Martinez-Ferri et al., 2000; Methy et al., 1997). *P. halepensis* develops very well in dry environment, but might be less competitive in higher altitude where precipitation is high and temperature is low. Note here that our ecophysiological model does not limit tree growth at high elevations because freeze induced embolism is an effect not taken into account.

Our results also have limitations linked to both data and models. Our measurements still do not cover optimum periods of time. The vegetation models have some lacunae which must be filled up progressively in future. Finally, our vulnerability studies are based on a single scenario (IPCC-B2) of a single climatic model. They therefore do not have value of prediction but simply of indication. It will be necessary, to complete this approach, to use simulation ensembles from several climate models to deal with the climate evolution under probabilistic forms.

6 Conclusions

Finally, considering their present distribution areas being mainly located in the central part of PACA region and at low elevations, pine and oak species have a good chance to extend their habitat. This general trend is mainly (but not only) caused by the CO₂ atmospheric increase. Pine should colonize eastward and southward (along to Alps and Pyrenees slopes), while oak should colonize eastward, in the Alps. While our model does not simulate species competition, nor embolism, the pine productivity optimum

BGD

5, 573–603, 2008

Mediterranean forests under global warming

C. Gaucherel et al.

Title Page

Abstract

Introduction

Conclusions

References

Tables

Figures

◀

▶

◀

▶

Back

Close

Full Screen / Esc

Printer-friendly Version

Interactive Discussion

EGU

with elevation should favor this species in a first stage and then leave the place for oak, in particular at higher (above 1000 m) elevations.

Acknowledgements. We gratefully thank C. Rathgeber and Y. Gally respectively for comments on earlier drafts or for help in computing developments. This research has been funded by the French program GICC2 (Ministère de l'Ecologie et du Développement Durable) (project REFORME, 2005–2007) and by the Agence Nationale de la Recherche (project DROUGHT+, ANR-06-VULN-003-01).

References

- Andrieu, C., Djuric, P. M., and Doucet, A.: Model selection by MCMC computation, *Signal Process.*, 81, 19–37, 2001.
- Anselmi, S., Chiesi, M., Giannini, M., Manes, F., and Maselli, F.: Estimation of mediterranean forest transpiration and photosynthesis through the use of an ecosystem simulation model driven by remotely sensed data, *Global Ecol. Biogeogr.*, 13, 371–380, 2004.
- Ciais, P., Reichstein, M., Viovy, N., Granier, A., Ogee, J., Allard, V., Aubinet, M., Buchmann, N., Bernhofer, C., Carrara, A., Chevallier, F., De Noblet, N., Friend, A. D., Friedlingstein, P., Grunwald, T., Heinesch, B., Keronen, P., Knohl, A., Krinner, G., Loustau, D., Manca, G., Matteucci, G., Miglietta, F., Ourcival, J. M., Papale, D., Pilegaard, K., Rambal, S., Seufert, G., Soussana, J. F., Sanz, M. J., Schulze, E. D., Vesala, T., and Valentini, R.: Europe-wide reduction in primary productivity caused by the heat and drought in 2003, *Nature*, 437, 529–533, 2005.
- Debussche, M., Lepart, J., and Dervieux, A.: Mediterranean landscape changes: Evidence from old postcards, *Global Ecol. Biogeogr.*, 8, 3–15, 1999.
- Deque, M., Drevet, C., Braun, A., and Cariolle, D.: The arpege/ifs atmosphere model – a contribution to the French community climate modeling, *Clim. Dynam.*, 10, 249–266, 1994.
- Eamus, D., Macinnis-Ng, C. M. O., Hose, G. C., Zeppel, M. J. B., Taylor, D. T., and Murray, B. R.: Ecosystem services: An ecophysiological examination, *Aust. J. Bot.*, 53, 1–19, 2005.
- Ferrio, J. P., Florit, A., Vega, A., Serrano, L., and Voltas, J.: Delta C-13 and tree-ring width reflect different drought responses in quercus ilex and pinus halepensis, *Oecologia*, 137, 512–518, 2003.

BGD

5, 573–603, 2008

Mediterranean forests under global warming

C. Gaucherel et al.

Title Page

Abstract

Introduction

Conclusions

References

Tables

Figures

◀

▶

◀

▶

Back

Close

Full Screen / Esc

Printer-friendly Version

Interactive Discussion

EGU

Gaucherel, C., Campillo, F., Misson, L., Guiot, J., and Boreux, J. J.: Parameterization of a process-based tree-growth model: Comparison of optimization, mcmc and particle filtering algorithms, *Environ. Modell. Softw.*, accepted, 2007.

Gelman, A., Carlin, J. B., Stern, H. S., and Rubin, D. B.: *Bayesian data analysis*, Chapman and Hall, London, 526 pp., 1995.

Gibelin, A. L. and Deque, M.: Anthropogenic climate change over the mediterranean region simulated by a global variable resolution model, *Clim. Dynam.*, 20, 327–339, 2003.

Giorgi, F.: Climate change hot-spots, *Geophys. Res. Lett.*, 33, L08707, doi:10.1029/2006GL025734, 2006.

Granier, A.: Une nouvelle méthode pour la mesure du flux de sève brute dans le tronc des arbres, *Ann. For. Sci.*, 42, 193–200, 1985.

Granier, A.: Evaluation of transpiration in a douglas-fir stand by means of sap flow measurements, *Tree Physiol.*, 3, 309–320, 1987.

Guiot, J.: Arma techniques for modelling tree-ring response to climate and for reconstructing variations of palaeoclimates, *Ecol. Model.*, 33, 149–171, 1986.

Hanski, I. and Ovaskainen, O.: The metapopulation capacity of a fragmented landscape, *Nature*, 404, 755–758, 2000.

Jobbagy, E. G. and Jackson, R. B.: Global controls of forest line elevation in the northern and southern hemispheres, *Global Ecol. Biogeogr.*, 9, 253–268, 2000.

Joffre, R., Rambal, S., and Damesin, C.: Functional attributes in mediterranean-type ecosystems, in: *Handbook of functional plant ecology*, edited by: Pugnaire, F. I. and Valladares, F., Marcel Dekker Inc., New York, 347–380, 1999.

Luoto, M., Poyry, J., Heikkinen, R. K., and Saarinen, K.: Uncertainty of bioclimate envelope models based on the geographical distribution of species, *Global Ecol. Biogeogr.*, 14, 575–584, 2005.

Martinez-Ferri, E., Balaguer, L., Valladares, F., Chico, J. M., and Manrique, E.: Energy dissipation in drought-avoiding and drought-tolerant tree species at midday during the mediterranean summer, *Tree Physiol.*, 20, 131–138, 2000.

Methy, M., Gillon, D., and Houssard, C.: Temperature-induced changes of photosystem ii activity in quercus ilex and pinus halepensis, *Can. J. Forest Res.*, 27, 31–38, 1997.

Misson, L.: Maiden: A model for analyzing ecosystem processes in dendroecology, *Can. J. Forest Res.*, 34, 874–887, 2004.

Misson, L., Rathgeber, C., and Guiot, J.: Dendroecological analysis of climatic effects on quer-

BGD

5, 573–603, 2008

Mediterranean forests under global warming

C. Gaucherel et al.

Title Page

Abstract

Introduction

Conclusions

References

Tables

Figures

◀

▶

◀

▶

Back

Close

Full Screen / Esc

Printer-friendly Version

Interactive Discussion

EGU

- cus petraea and pinus halepensis radial growth using the process-based maiden model, *Can. J. Forest Res.*, 34, 888–898, 2004.
- New, M., Hulme, M., and Jones, P. D.: Representing twentieth century space-time climate variability. Part 1: Development of a 1961–1990 mean monthly terrestrial climatology, *J. Climate*, 12, 829–856, 1999.
- Nicault, A.: Analyse de l'influence du climat sur les variations inter- et intra-annuelles de la croissance radiale du pin d'alep (*pinus halepensis* mill.) en provence calcaire, PhD Thesis Aix-Marseille III, Marseille, France, 1999.
- Prentice, I. C. and Webb, T.: Biome 6000: Reconstructing global mid-holocene vegetation patterns from palaeoecological records, *J. Biogeogr.*, 25, 997–1005, 1998.
- Rambal, S., Ourcival, J. M., Joffre, R., Mouillot, F., Nouvellon, Y., Reichstein, M., and Rocheteau, A.: Drought controls over conductance and assimilation of a mediterranean evergreen ecosystem: Scaling from leaf to canopy, *Glob. Change Biol.*, 9, 1813–1824, 2003.
- Rathgeber, C., Nicault, A., Guiot, J., Keller, T., Guibal, F., and Roche, P.: Simulated responses of *pinus halepensis* forest productivity to climatic change and CO₂ increase using a statistical model, *Global Planet Change*, 26, 405–421, 2000.
- Rathgeber, C., Nicault, A., Kaplan, J. O., and Guiot, J.: Using a biogeochemistry model in simulating forests productivity responses to climatic change and CO₂ increase: Example of *pinus halepensis* in provence (south-east france), *Ecol. Modell.*, 166, 239–255, 2003.
- Rathgeber, C. B. K., Misson, L., Nicault, A., and Guiot, J.: Bioclimatic model of tree radial growth: Application to the French mediterranean Aleppo pine forests, *Trees-Struct. Funct.*, 19, 162–176, 2005.
- Rétho, B., Gaucherel, C., and Inchausti, P.: Spatially explicit population dynamics of *Pterostichus Melanarius* i11. (coleoptera: Carabidae) in response to changes in the composition and configuration of agricultural landscapes, *Landscape Urban Plan.*, in press, 2007.
- Running, S. W., Nemani, R. R., and Hungerford, R. D.: Extrapolation of synoptic meteorological data in mountainous terrain and its use for simulating forest evapotranspiration and photosynthesis, *Can. J. Forest Res.*, 17, 472–483, 1987.
- Sitch, S., Smith, B., Prentice, I. C., Arneth, A., Bondeau, A., Cramer, W., Kaplan, J. O., Levis, S., Lucht, W., Sykes, M. T., Thonicke, K., and Venevsky, S.: Evaluation of ecosystem dynamics, plant geography and terrestrial carbon cycling in the LPJ dynamic global vegetation model, *Glob. Change Biol.*, 9, 161–185, 2003.
- Spiegelhalter, D. J., Thomas, A., and Gilks, W. R.: Bugs, bayesian inference using Gibbs sam-

BGD

5, 573–603, 2008

**Mediterranean
forests under global
warming**

C. Gaucherel et al.

Title Page

Abstract

Introduction

Conclusions

References

Tables

Figures

◀

▶

◀

▶

Back

Close

Full Screen / Esc

Printer-friendly Version

Interactive Discussion

EGU

pling, MRC Biostatistics Unit, Cambridge, UK, 1993.

Tessier, L.: Spatio-temporal analysis of climate tree-ring relationships, *The New Phytologist*, 111, 517–529, 1989.

5 Vincke, C., Granier, A., Breda, N., and Devillez, F.: Evapotranspiration of a declining *Quercus robur* (L.) stand from 1999 to 2001, II: Daily evapotranspiration and soil water reserve, *Ann. Forest Sci.*, 62, 615–623, 2005.

West, A. W., Ross, D. J., and Cowling, J. C.: Changes in microbial C, N, P and Atp contents, numbers and respiration on storage of soil, *Soil Biol. Biochem.*, 18, 141–148, 1986.

10 Yu, M., Gao, Q., Liu, Y. H., Xu, H. M., and Shi, P. J.: Responses of vegetation structure and primary production of a forest transect in eastern china to global change, *Global Ecol. Biogeogr.*, 11, 223–236, 2002.

BGD

5, 573–603, 2008

**Mediterranean
forests under global
warming**

C. Gaucherel et al.

Title Page

Abstract

Introduction

Conclusions

References

Tables

Figures

◀

▶

◀

▶

Back

Close

Full Screen / Esc

Printer-friendly Version

Interactive Discussion

EGU

Mediterranean forests under global warming

C. Gaucherel et al.

Table 1. Monthly values of the three climate parameters used (mean maximum and minimum daily temperatures in °K and monthly amount of precipitations in mm) for the common period (1960–1997) between CRU and APG data. Corrected APG values using CRU values are noted APG/CRU. Monthly means (for temperatures) and sums (precipitations) are highlighted in bold with their annual means and standard deviations.

Parameters	Jan	Feb	March	April	May	June	July	Aug	Sep	Oct	Nov	Dec	Mean (T°) or Sum (Pcp)	Month Std
T (mean) CRU	2.05	3.09	5.42	8.03	12.01	15.60	18.54	18.18	15.13	10.88	5.74	2.80	9.79	6.09
T_{\max} APG	4.12	6.10	8.43	11.76	15.70	20.17	23.97	25.37	21.23	14.35	8.56	5.18	13.74	7.54
T_{\max} APG/CRU	4.75	7.09	10.94	15.80	22.30	28.75	33.87	33.57	25.75	14.72	4.29	-1.40	16.70	12.03
T_{\min} APG	-1.18	-0.52	0.62	2.79	6.09	9.69	12.72	13.43	10.51	5.89	2.52	0.18	5.23	5.28
T_{\min} APG/CRU	-0.55	0.48	3.14	6.83	12.70	18.27	22.62	21.63	15.03	6.26	-1.76	-6.39	8.19	9.71
Pcp CRU	77.85	69.57	69.87	85.48	97.22	85.07	64.30	82.18	91.86	93.84	86.69	80.81	985	10.21
Pcp APG	56.12	47.99	60.40	72.20	95.75	86.70	74.24	58.49	59.85	88.00	82.28	74.73	857	14.91
Pcp APG/CRU	77.83	64.51	86.88	131.32	171.36	129.09	80.43	80.13	87.90	133.44	101.37	77.87	1222	32.10

Title Page

Abstract

Introduction

Conclusions

References

Tables

Figures

⏪

⏩

◀

▶

Back

Close

Full Screen / Esc

Printer-friendly Version

Interactive Discussion

**Mediterranean
forests under global
warming**

C. Gaucherel et al.

Table 2. Correction coefficients (up) of APG parameters for the twenty-first century based on monthly and spatially dependent deviation (for temperatures) or ratio (for precipitations) coefficients. All coefficients have been computed over the (1960–1997) control period using the whole PACA grid. Mean monthly variations of the corrected climate parameters (down) between the twenty-first and twentieth centuries are presented. Annual means and standard deviations of monthly values follow.

Coefficients	Jan	Feb	March	April	May	June	July	Aug	Sep	Oct	Nov	Dec	Mean	Std
<i>T</i> (max and min)	-0.63	-1.00	-2.52	-4.04	-6.61	-8.58	-9.90	-8.20	-4.52	-0.37	4.27	6.58	-2.96	5.08
Pcp	1.35	1.31	1.45	1.80	1.80	1.51	1.11	1.39	1.46	1.49	1.20	1.04	1.41	0.24
<i>T</i> _{max} 21/20	2.54	2.12	2.24	2.49	2.91	2.88	4.16	3.39	2.73	1.94	1.95	2.03	2.62	0.66
<i>T</i> _{min} 21/20	2.26	1.89	1.68	1.99	2.16	2.65	3.35	2.95	2.82	1.95	1.68	1.92	2.27	0.54
Pcp 21/20	2.74	4.46	1.83	1.72	1.01	1.14	0.94	1.10	1.67	1.40	1.50	1.53	1.75	0.98

Title Page

Abstract

Introduction

Conclusions

References

Tables

Figures

◀

▶

◀

▶

Back

Close

Full Screen / Esc

Printer-friendly Version

Interactive Discussion

**Mediterranean
forests under global
warming**C. Gaucherel et al.

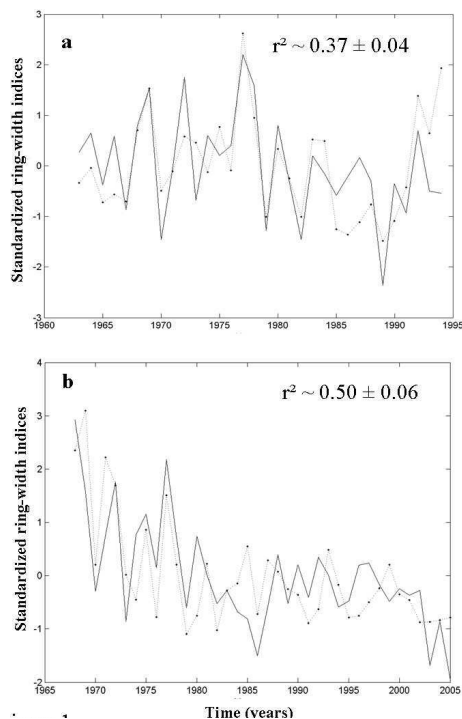


Fig. 1. Indexed tree-ring series (dotted line) and bole carbon allocation simulated by MAIDEN model after MCMC calibration (plain line) **(a)** Regional Aleppo pine (*Pinus Halepensis*) dendrochronology averaged over 21 series and **(b)** evergreen oak series at Puechabon site. Both simulations are based on a calibration stage obtained after the convergence of five draws (5000 steps each).

[Title Page](#)[Abstract](#)[Introduction](#)[Conclusions](#)[References](#)[Tables](#)[Figures](#)[◀](#)[▶](#)[◀](#)[▶](#)[Back](#)[Close](#)[Full Screen / Esc](#)[Printer-friendly Version](#)[Interactive Discussion](#)

Mediterranean forests under global warming

C. Gaucherel et al.

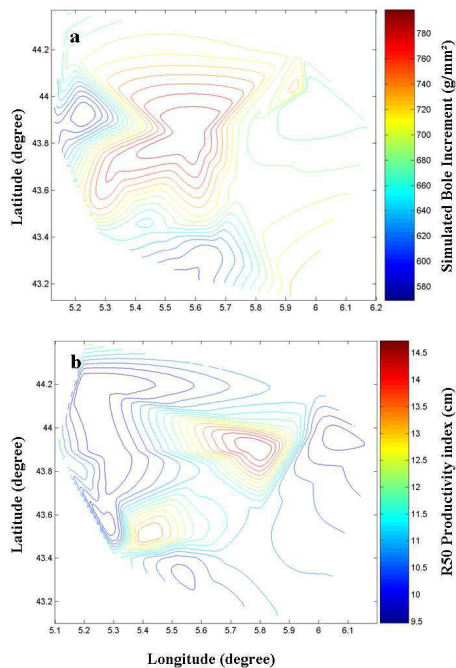


Fig. 2. Map of the simulated bole increments of pine (a) and of the R50 productivity index (b) in PACA southeast France (twentieth century).

Title Page

Abstract

Introduction

Conclusions

References

Tables

Figures

◀

▶

◀

▶

Back

Close

Full Screen / Esc

Printer-friendly Version

Interactive Discussion

Mediterranean forests under global warming

C. Gaucherel et al.

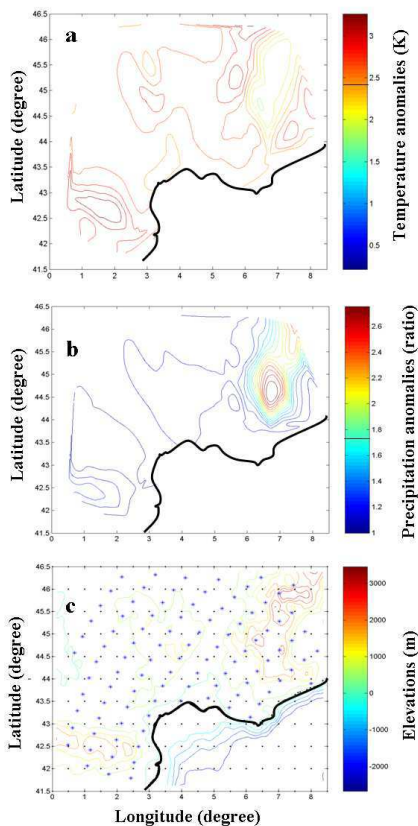


Fig. 3. (a) Map of the mean temperature anomalies (twenty first minus twentieth centuries) simulated by ARPEGE and averaged over the 12 months (in K). (b) Map of the precipitation ratios between twenty first and twentieth century simulated by ARPEGE. Daily precipitation ratios have been averaged by month and then over the year. (c) Topography of southeast France, superimposed with the two ARPEGE (dots) and CRU (stars) 0.5° × 0.5° grids.

Title Page

Abstract

Introduction

Conclusions

References

Tables

Figures

◀

▶

◀

▶

Back

Close

Full Screen / Esc

Printer-friendly Version

Interactive Discussion

Mediterranean forests under global warming

C. Gaucherel et al.

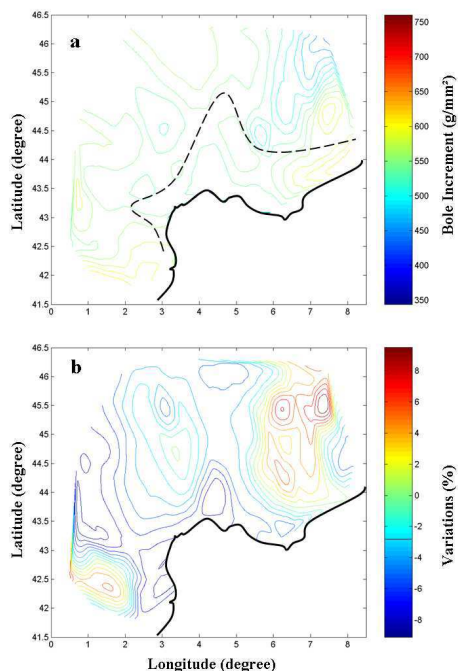


Fig. 4. (a) Map of the mean annual growth of pine in southeast France at the end of the twentieth century (1960–1997). The modern limit of its potential distribution is indicated by black dashed line. (b) Map of the mean annual growth variation of pine in southeast France (in %), between the twentieth and the twenty first centuries without direct effect of CO₂ (i.e. with atmospheric CO₂ being fixed to 360 ppm).

[Title Page](#)[Abstract](#)[Introduction](#)[Conclusions](#)[References](#)[Tables](#)[Figures](#)[◀](#)[▶](#)[◀](#)[▶](#)[Back](#)[Close](#)[Full Screen / Esc](#)[Printer-friendly Version](#)[Interactive Discussion](#)

**Mediterranean
forests under global
warming**C. Gaucherel et al.

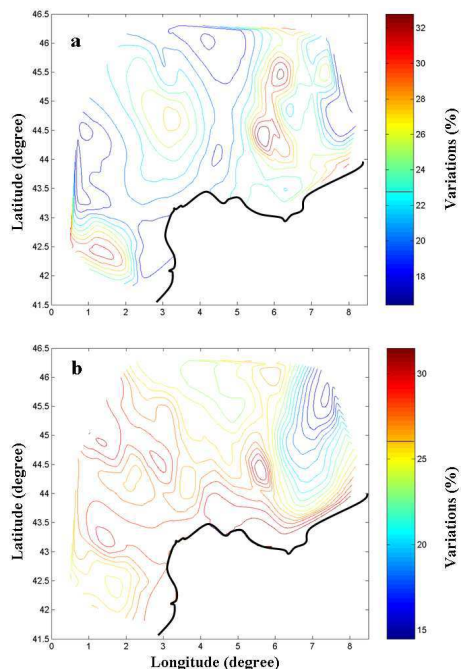


Fig. 5. (a) Map of the mean annual growth variation of pine in southeast France (in %), between the twentieth (1967–1997) and the twenty first (2062–2099) centuries with direct effect of CO₂ (increasing from 360 to 612 ppm). (b) Difference of pine growth between simulations with and without increase of CO₂ in twenty first century.

[Title Page](#)[Abstract](#)[Introduction](#)[Conclusions](#)[References](#)[Tables](#)[Figures](#)[◀](#)[▶](#)[◀](#)[▶](#)[Back](#)[Close](#)[Full Screen / Esc](#)[Printer-friendly Version](#)[Interactive Discussion](#)

Mediterranean forests under global warming

C. Gaucherel et al.

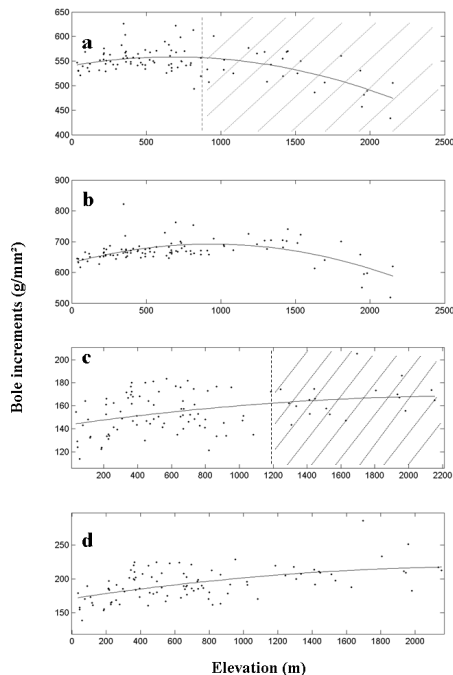


Fig. 6. Relationships between mean annual growth of pine (resp. oak) and elevation: **(a)** pine, twentieth century, **(b)** pine, twenty first century with CO₂ direct effect, **(c)** oak, twentieth century, **(d)** oak, twenty first century with CO₂ direct effect. The elevation range where pine and oak are not living at present time is indicated by hashes.

Title Page

Abstract

Introduction

Conclusions

References

Tables

Figures

◀

▶

◀

▶

Back

Close

Full Screen / Esc

Printer-friendly Version

Interactive Discussion

**Mediterranean
forests under global
warming**C. Gaucherel et al.

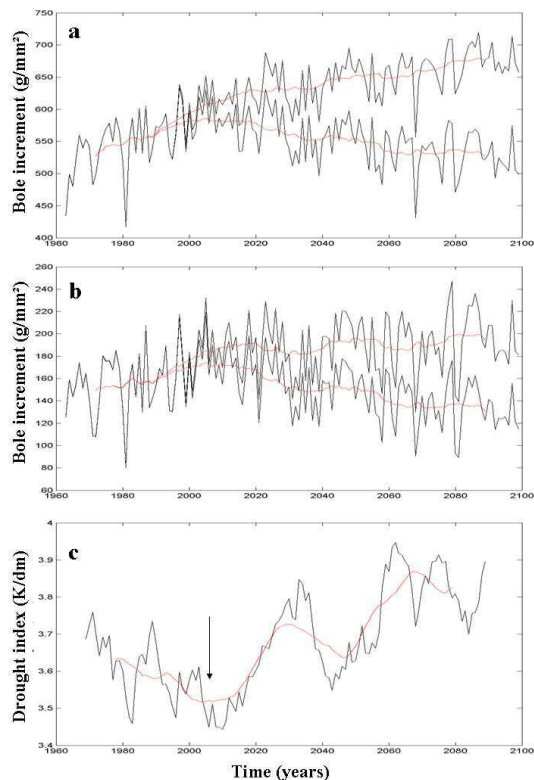


Fig. 7. (a) Evolution of the mean annual production of pine for southeast France simulated on the basis of the ARPEGE scenario, with (plain line) and without (dotted line) direct effect of CO₂. (b) Same for oak. (c) Evolution of a simple drought index (annual temperature in K divided by annual total of precipitation in mm). The red curves correspond to 20 year window moving averages.

[Title Page](#)[Abstract](#)[Introduction](#)[Conclusions](#)[References](#)[Tables](#)[Figures](#)[◀](#)[▶](#)[◀](#)[▶](#)[Back](#)[Close](#)[Full Screen / Esc](#)[Printer-friendly Version](#)[Interactive Discussion](#)

**Mediterranean
forests under global
warming**C. Gaucherel et al.

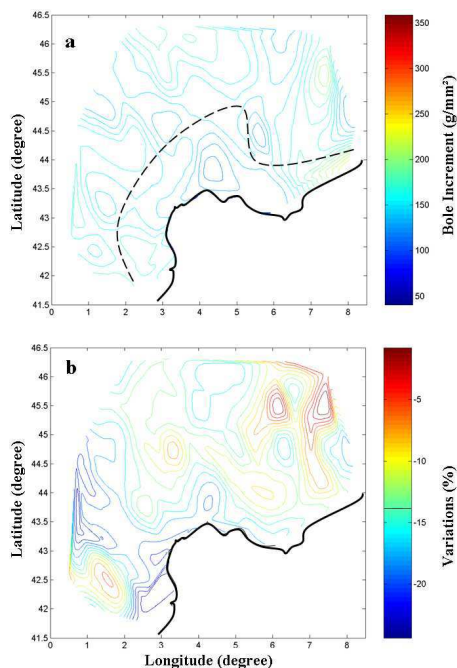


Fig. 8. (a) Map of mean annual growth of oak in southeast France at the end of the twentieth century (1960–1997); the modern limit of its potential distribution is indicated in black dashed line. (b) Map of the variation of the mean annual growth of oak in southeast France (in %), between the twentieth and the twenty first centuries without direct effect of CO₂ (i.e. with CO₂ being fixed to 360 ppm).

[Title Page](#)[Abstract](#)[Introduction](#)[Conclusions](#)[References](#)[Tables](#)[Figures](#)[◀](#)[▶](#)[◀](#)[▶](#)[Back](#)[Close](#)[Full Screen / Esc](#)[Printer-friendly Version](#)[Interactive Discussion](#)

**Mediterranean
forests under global
warming**C. Gaucherel et al.

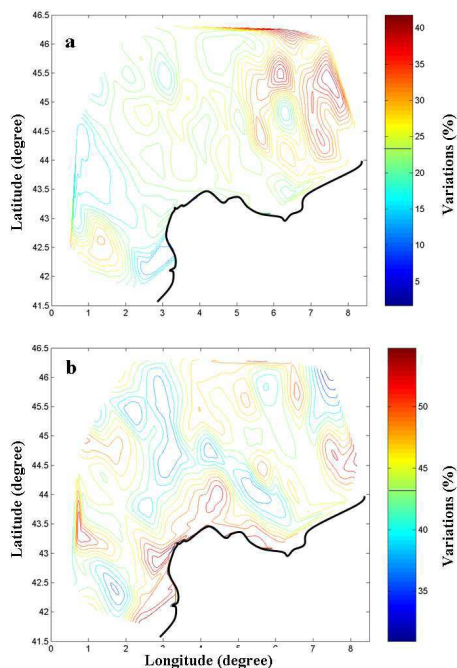


Fig. 9. (a) Map of the variation of the mean annual growth of *Quercus Ilex* in Southeast France (in %), between the Twentieth (1967–1997) and the twenty first centuries with direct effect of CO₂ (increasing from 360 to 612 ppm). (b) Difference of oak growth between simulations with and without increase of CO₂ in twenty first century (2062–2099).

[Title Page](#)[Abstract](#)[Introduction](#)[Conclusions](#)[References](#)[Tables](#)[Figures](#)[◀](#)[▶](#)[◀](#)[▶](#)[Back](#)[Close](#)[Full Screen / Esc](#)[Printer-friendly Version](#)[Interactive Discussion](#)