



HAL
open science

Enhanced incoherent scatter plasma lines

Hans Nilsson, S. Kirkwood, Jean Lilensten, Marina Galand

► **To cite this version:**

Hans Nilsson, S. Kirkwood, Jean Lilensten, Marina Galand. Enhanced incoherent scatter plasma lines. *Annales Geophysicae*, 1996, 14 (12), pp.1462-1472. hal-00329060

HAL Id: hal-00329060

<https://hal.science/hal-00329060>

Submitted on 18 Jun 2008

HAL is a multi-disciplinary open access archive for the deposit and dissemination of scientific research documents, whether they are published or not. The documents may come from teaching and research institutions in France or abroad, or from public or private research centers.

L'archive ouverte pluridisciplinaire **HAL**, est destinée au dépôt et à la diffusion de documents scientifiques de niveau recherche, publiés ou non, émanant des établissements d'enseignement et de recherche français ou étrangers, des laboratoires publics ou privés.

Enhanced incoherent scatter plasma lines

H. Nilsson¹, S. Kirkwood¹, J. Liliensten², M. Galand²

¹ Swedish Institute of Space Physics, Box 812, S-981 28 Kiruna, Sweden

² Centre d'Etudes des Phénomènes Aléatoires et Géophysiques – ENSIEG, St Martin d'Heres Cedex, France

Received: 1 December 1995/Revised: 19 April 1996/Accepted: 25 April 1996

Abstract. Detailed model calculations of auroral secondary and photoelectron distributions for varying conditions have been used to calculate the theoretical enhancement of incoherent scatter plasma lines. These calculations are compared with EISCAT UHF radar measurements of enhanced plasma lines from both the E and F regions, and published EISCAT VHF radar measurements. The agreement between the calculated and observed plasma line enhancements is good. The enhancement from the superthermal distribution can explain even the very strong enhancements observed in the auroral E region during aurora, as previously shown by Kirkwood *et al.* The model calculations are used to predict the range of conditions when enhanced plasma lines will be seen with the existing high-latitude incoherent scatter radars, including the new EISCAT Svalbard radar. It is found that the detailed structure, i.e. the gradients in the suprathermal distribution, are most important for the plasma line enhancement. The level of superthermal flux affects the enhancement only in the region of low phase energy where the number of thermal electrons is comparable to the number of suprathermal electrons and in the region of high phase energy where the suprathermal fluxes fall to such low levels that their effect becomes small compared to the collision term. To facilitate the use of the predictions for the different radars, the expected signal-to-noise ratios (SNRs) for typical plasma line enhancements have been calculated. It is found that the high-frequency radars (Søndre Strømfjord, EISCAT UHF) should observe the highest SNR, but only for rather high plasma frequencies. The VHF radars (EISCAT VHF and Svalbard) will detect enhanced plasma lines over a wider range of frequencies, but with lower SNR.

1 Introduction

The plasma line is a well known, but little used component of the incoherent scatter radar spectrum. It is a signal scattered from high-frequency electron waves, Langmuir

waves. Two plasma lines can be detected by the radar, one upshifted from the transmitted frequency, and one downshifted. These lines correspond to scattering from downgoing and upgoing Langmuir waves respectively. The frequency shift from the transmitted signal is the frequency of the scattering Langmuir wave plus the Doppler shift caused by the bulk motion of the electron gas. The wave vector of the scattering Langmuir wave is determined by wave vector matching requirements with the incident and reflected electromagnetic waves. The reflected waves are shifted in frequency, and the up and downshifted plasma lines will have slightly different wave vectors. In practice this difference in wave vectors leads to significant differences in offset frequency and if the Doppler shift is to be measured the dispersion relation of the Langmuir waves must be known with good accuracy (e.g. Hagfors and Lehtinen, 1981; Heinselman and Vickrey, 1992; Kofman *et al.*, 1993). The frequency of the Langmuir wave is close to the plasma frequency, i.e. a few MHz for most realistic conditions. The wave number dependence of the Langmuir wave dispersion is primarily dependent on the electron temperature.

However, there is one more measurable property of the plasma lines than their frequency. The Langmuir waves in a thermal plasma are relatively weak, often too weak to be usable for incoherent scatter radar measurements. In a thermal plasma the wave intensity is proportional to the electron temperature, but when superthermal electrons are present they can greatly enhance the Langmuir wave (and thus plasma line) intensity. This is because the waves are driven by electrons with a velocity component along the wave vector matching the phase velocity of the wave (Cherenkov emission), and damped by Landau damping. The Landau damping is proportional to the slope of the (one-dimensional) electron distribution function at velocities matching the wave phase velocity, while the Cherenkov emission is proportional to the number of electrons, i.e. the value of the one-dimensional distribution function, so the shape of the electron distribution function will determine the strength of the plasma line. For low fluxes (e.g. at high phase velocities), and low altitudes,

collisions will damp the Langmuir waves toward their thermal level (e.g. Yngvesson and Perkins, 1968).

Plasma lines have a number of potential uses: the system constant for the incoherent scatter radar can be determined with good accuracy using plasma frequency measurements, e.g. Kirkwood *et al.*, 1986. Such measurements can also be used to determine the electron temperature independently of the ion line analysis (Hagfors and Lehtinen, 1981; Kirkwood and Bjørnå, 1992). By fully combining ion lines and plasma lines in the analysis of incoherent scatter radar data, it is also possible to resolve the temperature/composition ambiguity in the ion line autocorrelation function (Bjørnå and Kirkwood, 1988). High time resolution electron temperature estimates can also be made using a combination of ion and plasma lines (Kirkwood *et al.*, 1995). Measurements of the plasma line strength in restricted frequency intervals (i.e. filter banks) can be used to estimate the suprathermal electron flux in different energy ranges (e.g. Yngvesson and Perkins, 1968). In this case, however, Landau or collisional damping terms must be significant, as the intensity of the suprathermal flux only matters for its relative importance as compared to other influences. This assumption may not always hold as will be discussed later.

Maybe the most promising aspect of the plasma lines is the possibility to measure the electron drift from the Doppler shift of the signal. There are, however, still some theoretical uncertainties in the interpretation of the measurements (Kofman *et al.*, 1993; Nilsson *et al.*, 1996).

There is thus much to be gained from an increased use of plasma lines especially for the possibility to measure field-aligned currents, where the remaining theoretical uncertainties can only be resolved by further measurements. It is then very valuable to be able to choose those circumstances when plasma line measurements are possible. Several studies of plasma line enhancement have been made, but none complete enough to serve as a guide for all high-latitude incoherent scatter radars (e.g. Yngvesson and Perkins, 1968). Though Oran *et al.* (1981) have used relatively detailed model electron fluxes for auroral conditions to validate the flux model, no clear plasma line strength predictions for a variety of geophysical conditions have been published. We have used state-of-the-art model calculations of the superthermal electron distribution for both sunlit and nighttime auroral conditions (Lummerzheim and Liliensten, 1994), and calculated the expected plasma line intensity for different radars (i.e. different transmitter frequencies) and different conditions. These are compared to measurements, to validate the results. The calculated plasma line intensities have also been used to predict the actual signal-to-noise ratio (SNR) for different radars, to give a guide to when plasma line measurements should be made with the different radars.

2 Theory

2.1 Langmuir waves

The Langmuir waves giving rise to incoherent scatter plasma lines are high frequency electrostatic electron

waves with a frequency close to the resonance frequency of the cold plasma (the plasma frequency, ω_p). The slower ions do not participate in the wave motion, and the collision free solution to the electrons only Vlasov equation give the dispersion relation, which to first order is

$$\omega^2 = \omega_p^2(1 + 3k^2\lambda_D^2), \quad (1)$$

where ω_p denotes the plasma angular frequency, ω denotes the wave angular frequency, λ_D is the Debye length and k is the wave number of the Langmuir wave. Equation 1 is valid for the field-aligned case as no magnetic field effect is included. The accuracy of this expression, and the need for refinements for certain detailed studies are discussed in several studies (e.g. Hagfors and Lehtinen, 1981; Heinselman and Vickrey, 1992; Kirkwood and Bjørnå, 1992; Kofman *et al.*, 1993).

The strength of the Langmuir wave is determined from a balance between driving and damping forces. The main driving force is the Cherenkov emission. When a test charge moves through a plasma, it loses energy to collective modes of the plasma. It can be shown (Ichimaru, 1992) that the condition for emission in a cold plasma is

$$\omega_p = |k \cdot v_0|, \quad (2)$$

with ω_p and k as before, and v_0 the velocity of the test charge. Equation 2 shows two important aspects of the Cherenkov emission. The first is that the emission mechanism does not depend on the amplitude of the plasma waves already existing in the plasma. The second is that it is the velocity component of the test particle along the wave vector that matters. This means that it is the one-dimensional electron velocity distribution along the Langmuir wave vector that determines the Cherenkov emission. It also shows clearly how a change of k vector (essentially a change of radar frequency) will change the velocity of the resonant particle for a given plasma frequency. For a real plasma, the plasma frequency in Eq. 2 is exchanged for the Langmuir wave frequency, and the velocity of the resonant particle is still simply the wave phase velocity (ω/k).

Langmuir waves are subject to both collision free (Landau) and collisional damping. The Landau damping is proportional to the slope of the one-dimensional electron distribution function along the Langmuir wave vector (e.g. Ichimaru, 1992). Thus, with a positive gradient (more particles at higher energies) there could be Landau growth. However, for an isotropic plasma this will never be the case no matter what the shape of the three-dimensional distribution function. Suprathermal electrons can show considerable structure in the three-dimensional distribution function with positive gradients in the flux-energy spectrum. These, however, always become negative slopes in the one-dimensional distribution.

Collisional damping of the Langmuir waves dominates at low altitudes, where the collision frequency is high, and at high phase velocities of the Langmuir wave, when there are few resonant particles, making both the Cherenkov emission and the Landau damping terms small (e.g. Perkins and Salpeter, 1965). Collisions also excite Langmuir

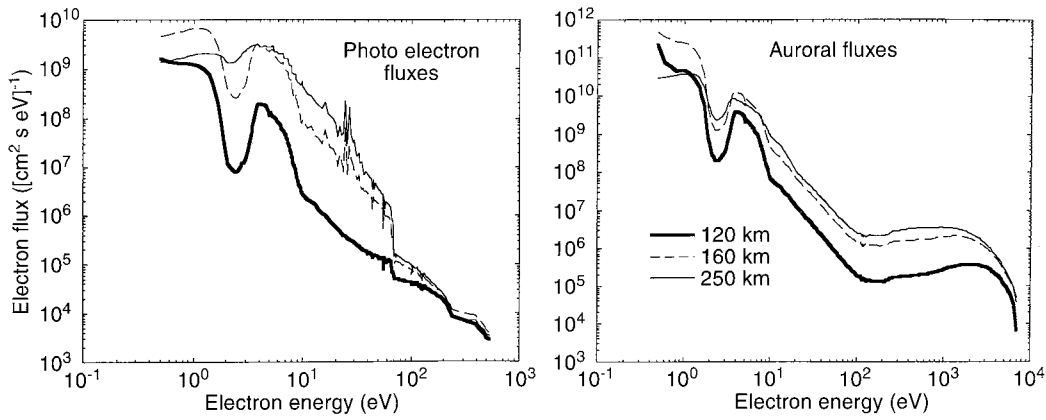


Fig. 1. Model photo electron and auroral electron fluxes for 120, 160 and 250 km altitudes. The photoelectron fluxes have been calculated for high solar activity conditions, $f_{10.7}$ index = 180. The auroral electron fluxes have been calculated using a 1 keV Maxwellian primary flux of 25 ergs/cm²/s

waves, but involve only particles of average energy, and will thus tend to push the wave intensity towards its thermal level.

2.2 Plasma line temperature

The different terms presented in Sect. 2.1 can be put together in a simple and elegant expression giving the intensity of the Langmuir waves (e.g. Yngvesson and Perkins, 1968). The intensity is usually measured in ‘plasma line temperature’, T_p , defined as the temperature of a Maxwellian plasma giving the same wave intensity. This is natural, because the wave intensity increases with electron temperature. For higher intensities it is even more convenient to multiply by Boltzmann’s constant, and express the temperature in eV. Thus, denoting the one-dimensional thermal (Maxwellian) and suprathermal electron distributions $f_m(v)$ and $f_s(v)$ respectively, and the collisional damping term χ , we get:

$$KT_p = \frac{KT_e(f_m(v_\phi) + f_s(v_\phi) + \chi)}{f_m(v_\phi) - KT_e \frac{d}{dE} f_s(v_\phi) + \chi}, \quad (3)$$

where K is Boltzmann’s constant, T_e the electron temperature, $v_\phi = \omega_{pl}/k$ is the phase velocity of the Langmuir waves which scatter the radar signal, at frequency ω_{pl} and scattering wave vector k , and the collision term is given by

$$\chi = \frac{n_e K T_e v_e}{m \pi k v_\phi^4},$$

$$v_e = v_{en} + v_{ei},$$

$$v_{en} = 5.4 \times 10^{-16} n_n (T_e)^{0.5},$$

$$v_{ei} = [34 + 4.18 \log(T_e^3 / c n_e \times 10^{-6})] \times [(n_e \times 10^{-6}) / T_e^{1.5}], \quad (4)$$

where n_n is the neutral number density, n_e the plasma number density and m_e the electron mass (Newman and Oran, 1981, Nicolet, 1953). The collisional term dominates the damping below 110 km (Oran *et al.*, 1981).

The effects of a magnetic field can be taken into account by replacing the thermal Maxwellian distribution

with (Yngvesson and Perkins, 1968):

$$f(v_\phi) = n_e \left(\frac{m_e}{2\pi k T_e} \right)^{0.5} \sum_{j=-\infty}^{\infty} \frac{\exp(-b \sin^2 \theta)}{\cos \theta} \times I_j(b \sin^2 \theta) \cdot \exp\left(\frac{-(y-j)^2}{2b \cos^2 \theta}\right). \quad (5)$$

where I_j is the modified Bessel function of the first kind, $b = k^2 K T_e / m_e \omega_c$, $y = \omega_{pl} / \omega_c$, ω_c the electron cyclotron frequency and θ the angle between the Langmuir wave vector and the magnetic field. In the examples that follow the field-aligned case is discussed unless otherwise stated.

2.3 Suprathermal electron fluxes

Both solar EUV radiation and auroral precipitation give rise to suprathermal electrons in the ionospheric plasma. These electrons will show considerable structure in their distribution, because of both loss and production processes varying over different energy ranges (e.g. Rees, 1988). Such structures will influence the ratio between damping and excitation of Langmuir waves, and therefore cause different plasma line enhancements in different energy ranges. It is therefore important to use an as accurate model as possible of the suprathermal electron distribution. We have used model calculations according to the procedure described by Lummerzheim and Lilensten (1994).

Three sample photo electron and three auroral secondary energy-flux spectra are shown in Fig. 1. In the lower altitude samples (Fig. 1; 120, 160 km) the most prominent feature of the spectra is the dip in the 2–4 eV region. At higher altitudes the 2–4 eV dip, caused by excitation of vibrational levels in N_2 , is less prominent. As was shown by Kirkwood *et al.* (1995), this dip results in a very flat one-dimensional distribution function in the same energy range, giving low Landau damping. It can also be seen that in the auroral case a power law description of the flux is adequate between 10 eV and 100 eV, which covers the reasonable upper limit of plasma line frequencies for the high latitude incoherent scatter radars. In the solar EUV case, there is pronounced structure arising from photo electron production in the 10–30 eV range, especially at higher altitudes. As with the N_2 dip this will affect the ratio between damping and excitation, and thus the

plasma line strength. Without competing influences, it is the shape of the suprathermal distribution that determines the plasma line enhancement, not the flux intensity. For a Maxwellian distribution the plasma line temperature will always be the temperature of the Maxwellian for all resonant energies and flux intensities. When there are competing influences, i.e. in the region of low phase energy where the number of thermal electrons is comparable to the number of suprathermal electrons and in the region of high phase energy where the suprathermal fluxes fall to so low levels that their effect becomes comparable to the collision term, the flux intensity of the superthermal distribution will matter for the relative importance of the different terms. For example, the plasma line temperature for fluxes 100 times those shown in Fig. 1 give further enhancements of less than 40% at 160 and 250 km altitude, if the resonant electrons are below 20 eV, as in these conditions, collisions have little effect. At 120 km collisional terms are important compared to the model fluxes used here, and an increase of the flux 100 times gives significant plasma line temperature enhancements (up to 4 times larger). At the boundary between the thermal and the superthermal region the level of suprathermal flux should also be important for the plasma line enhancement. The transition region between thermal and suprathermal influence is usually at rather low energy (below about 2 eV) and rather narrow, and primarily affects plasma lines in the F region where the electron temperature is highest. Unless the measurements are made in one of those regions where either collisions or thermal damping are significant, it is not feasible to estimate suprathermal electron fluxes from plasma line measurements.

3 Measurement techniques

3.1 Radar technique

The primary technique of measuring incoherent scatter plasma line strength is that of using filter banks. A number of channels are used to measure the backscattered signal power, each covering a different, narrow, frequency band. These can cover a broad frequency range together. It is also possible to monitor several plasma line frequencies at once with each filter, by transmitting several different frequencies. From each altitude range there will be only one plasma line frequency, and it is thus possible to judge a posteriori which transmitted signal caused the return signal (e.g. Fredriksen *et al.* 1989).

It is also possible to measure frequency spectra, in either narrow or wide filters. This is most useful at the peak of the F region, where the electron density maximum gives a clear plasma line frequency maximum, and thus a clear frequency cut-off of the signal. By chirping the radar (Birkmayer and Hagfors, 1986) it is possible to create an artificial maximum in the returned signal by matching the plasma line frequency gradient with a transmitter frequency gradient. For bi- or tristatic systems the limited scattering region for the remote sites will give an essentially Gaussian shape of the measured spectra, allowing for spectral measurements from any altitude.

3.2 Analysis technique

The plasma line temperature is calculated from the observed power in the incoherent scatter measurements, using the expression of Yngvesson and Perkins (1968), Eqs. 16 and 17 transformed to SI units:

$$KT_p = \frac{A_{pl} C_s P_{rp} r_p^2}{P_t \delta r_p}, \quad (6)$$

where C_s is the system constant (Kirkwood *et al.* 1986), P_{rp} is the power received in the plasma line channel, r_p is the range to the scattering volume, δr_p is the range contributing to the scattered plasma line signal and P_t is the transmitted signal. This is essentially the same as the equation relating incoherent scatter ion line strength to the raw electron density. The factor A_{pl} reflects both the different scattering cross section of Langmuir waves as compared to ion acoustic waves, and the possible different radar gains over the frequency interval covered by the returned plasma line signal. Thus,

$$A_{pl} = g^\pm e^2 / \epsilon_0 k^2, \quad (7)$$

where g is a gain factor found by calibration (using e.g. observations of radio stars), e the electron charge, ϵ_0 the permittivity of free space and k the wave number of the scattering wave.

The most difficult factor to estimate is the range contributing to the scattered plasma line signal, δr_p . The received signal is the convolution of the transmitted pulse and the altitude profile of the scattered power. In the E region, the scattering region is typically smaller than the range resolution of the measurements, and the best estimation is achieved by using measured plasma frequencies (from all available filters in a filter bank) to define the plasma line frequency-altitude profile. The range contributing to each receiver filter band can then be calculated. This has been described in detail by Kirkwood *et al.* (1995).

In F-region experiments, both scattering volume and pulse length are typically larger than the range gating. The plasma line power profiles thus show how the returned power increases with time (normally interpreted as range) as more and more of the pulse and the scattering region overlap. If the pulse length is longer than the scattering range, then the maximum backscattered signal will be obtained when all of the scattering region is illuminated by the pulse. Otherwise maximum signal will be for the time all of the signal illuminates part of the scattering region. In Fig. 2 a number of such plasma line power profiles are shown. One can note that the signal is not constant at the peak, but slightly increases with height. This is because the decrease of the received signal with r_p cannot be ignored. δr_p is not negligible compared to r_p , and if the nominal r_p for the gates are used to get KT_p according to formula (7) (convolved with the pulse in Fig. 2), then the signal strength will first be underestimated and later overestimated. The fitted (solid lines) functions in Fig. 2 have taken this into account. The functions assume the scattering region to be one continuous range interval with equal plasma line temperature

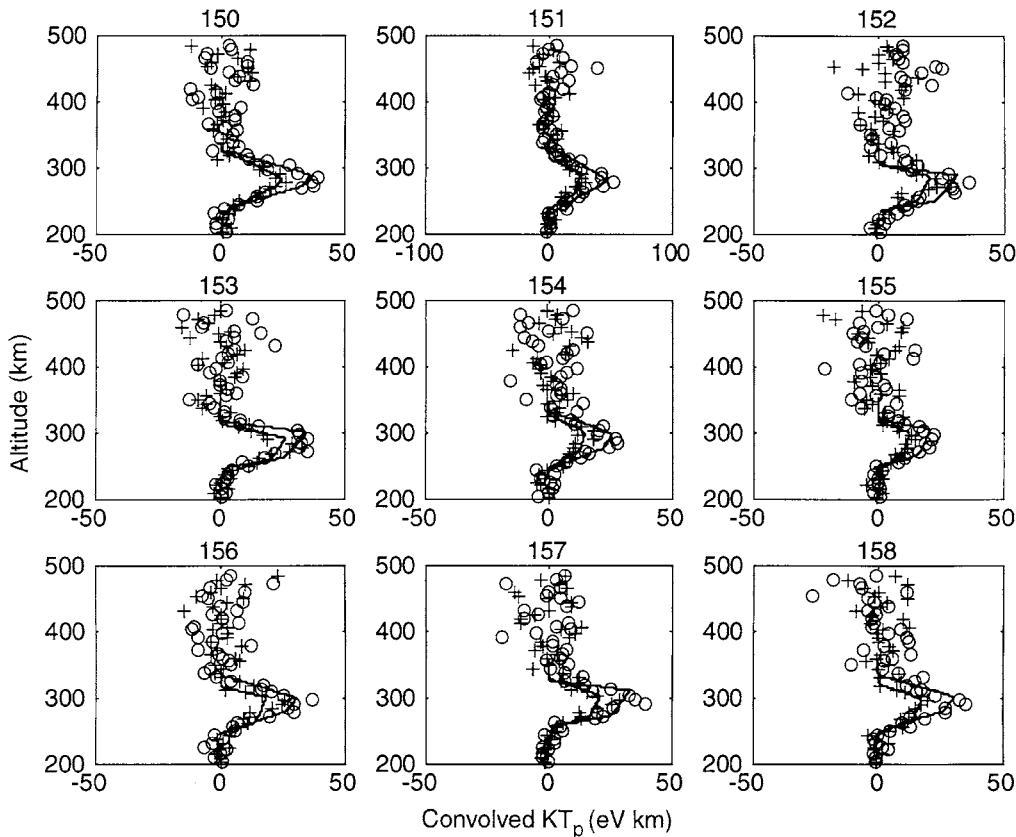


Fig. 2. Altitude profiles of plasma line intensity at 6.4 Mhz on 6 August 1990. The '+' signs denote the upshifted signal, and the 'o' denote the downshifted signal. The measured signal is multiplied with nominal gate range squared, and not compensated for different receiver gains. The solid lines are least square fits of a theoretical function [a single, uniform scattering range convolved with a 54 km (360 μ s) pulse, and compensated for the use of nominal gate range to the scattering region in the measured data]

throughout, and are fitted to the data using least squares.

For frequency spectra measurements at the peak of the F region, only one signal gate will be obtained. The shape of the spectra is determined by the enhancement and scattering range interval for the observed frequencies. To compare measurements with the predictions, the simplest approach is to use ion line measurements to calculate the plasma line frequency as a function of altitude, and through that calculate the scattering range interval.

It is important to note that it is the plasma line temperature times the length of the illuminated region that gives the basic signal strength. We will use 'convolved KT_p ' in this study to denote this. To calculate the actual signal strength received by the radar, one must take system noise, system constant and transmitted power into account using the following formula for signal to noise ratio, SNR :

$$SNR = \frac{P_t \delta r_p K T_p}{r_p^2 A_{pl} C_s K T_{Back} \Delta f} \quad (8)$$

where T_{Back} is the background temperature, i.e. the system noise, and Δf is the receiver bandwidth.

4 Predictions and tests

4.1 Predictions

The predictions are presented in subsequent sections, ordered after radar system. Two cases are presented, quiet

daytime conditions and auroral conditions. Though there are differences in neutral atmospheric density and photo electron fluxes between high and low solar activity, the main difference concerning plasma line measurements is in the electron density. Thus the predictions (made using high solar activity values) will be useful for both high and low solar activity. The differing electron densities (and thus plasma frequencies) generally present at solar maximum and solar minimum will however greatly affect the potential to measure plasma lines.

Predictions for three altitudes will be plotted, 120, 160 and 250 km. The height of 120 km is one where collisions are still important (for the neutral atmosphere and photo electron fluxes used), 160 km is high enough for collisions to be basically negligible, and 250 km is a typical altitude for the peak of the F region. The electron temperature will be important for the lowest plasma line frequency observable, and is set to typical values of 400, 1000 and 2000 K for the respective altitudes. Neutral densities used were taken from the MSIS-90E model (Hedin, 1987, 1991), using f10.7 index 180 and A_p index 19, day of year 183. For daytime measurements (local time 12) the neutral densities were $4.1 \cdot 10^{17}$, $3.2 \cdot 10^{16}$ and $2.9 \cdot 10^{15} \text{ m}^{-3}$, and the neutral temperatures 413, 926 and 1250 K for 120, 160 and 250 km altitude respectively. For the auroral night-time conditions (local time 24) the corresponding values used were $4.5 \cdot 10^{17}$, $3.5 \cdot 10^{16}$ and $2.7 \cdot 10^{15} \text{ m}^{-3}$, 394, 801 and 1020 K.

The auroral primary flux used as input to the model calculating the secondary flux is a 1 keV Maxwellian with a total energy flux $25 \text{ erg} \cdot \text{cm}^{-2} \cdot \text{s}^{-1}$. This energy is fairly

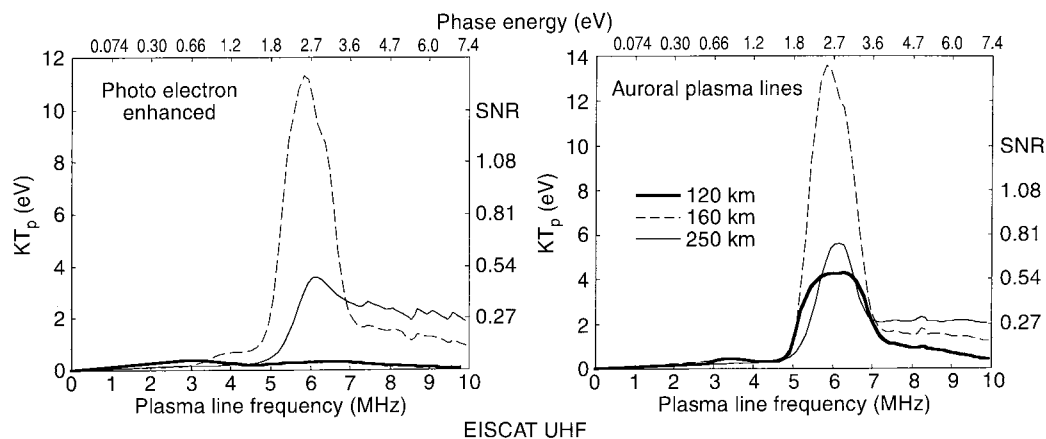


Fig. 3. Predicted plasma line strength for the EISCAT UHF radar for daytime and auroral conditions and three different altitudes. The *left y-axis* gives the plasma line temperature in eV, the *right y-axis* the F-region (250 km) signal-to-noise ratio for typical conditions (see

text for details). The *lower x-axis* gives the plasma line frequency, while the *upper* gives the phase energy for the resonant electrons (for comparisons with Fig. 1)

typical for auroral precipitation although higher energies of a few keV are not unusual. As the resonant electrons driving Cherenkov emission for all realistic plasma line cases are well below the energies of typical primary fluxes, the predictions should be representative for most auroral cases. Higher energy primary fluxes will, however, deposit most of their energy at lower altitudes, which causes stronger secondary fluxes and therefore stronger plasma line enhancements at lower altitude than our sample flux. Examples of such fluxes giving much stronger enhancement at 120 km than in our prediction have been described by Kirkwood *et al.* (1995).

The signal-to-noise ratio (SNR) will also be given together with the plasma line temperature. As this prediction is most important for the measurement of frequency spectra at the peak of the F region, the conversion factor from KT_p to SNR has been calculated for an altitude of 250 km, a scattering range interval of 30 km (which requires a pulse length larger than 200 μ s) and a receiver bandwidth of 100 kHz (experimental values from Nilsson *et al.*, 1996). It has also been assumed that the cut off is centered in the received frequency interval, as will typically be the case for actual measurements. This is important only for comparisons between estimated experimental SNR and the prediction. Radar system constant, system noise and transmitted power vary for the different radars, and the values used are given in the appropriate sections below. To use the SNR for the other altitudes, it is possible to compensate for the range difference (according to Eq. 8), and divide by 30 to get the SNR per scattering km. The actual values of the scattering range will vary much more in the dynamic E region (during aurora) than in the F region.

4.2 Tests

The theoretical results have been tested by comparison with EISCAT UHF and VHF measurements. Power profiles that can be analyzed using Eq. 6 have been used to

calculate the plasma line temperature from the measurements. For measurements at the peak of the F region the expected signal strength has been calculated using the ion line results (according to Eq. 8), and compared to the measured signal strength (SNR) over the receiver bandwidth. The measured SNR is the ratio of the range gate containing the F-region peak (cut-off) plasma line signal to an empty gate (lowest received power). This comparison is made also for the remote sites. For the remote sites, the receiver bandwidth was 1 MHz, and the SNR over the total bandwidth was negligible. Instead an interval of 20 kHz around the peak was used.

4.3 The EISCAT UHF and Søndre Strømfjord radars

With scattering wave numbers of about 39 and 56 m^{-1} , these two radar systems represent the upper range in scattering wave number. As the energy range of interest for plasma line enhancements is that corresponding to the phase velocity of the scattering wave (ω_{pi}/k), this means the lowest energy range for the suprathermal electrons. This of course also means that for low-enough plasma line frequencies or high-enough electron temperatures the resonant particles may fall within the thermal region, and no plasma line enhancement is obtained. The predictions for the EISCAT UHF are shown in Fig. 3 and for Søndre Strømfjord in Fig. 4. The system constant used for EISCAT UHF was $C_s = 1.8 \cdot 10^{27}$ (defined for Eq. 8, actually $C'_s \cdot c_0/2$ where c_0 is the speed of light and C'_s the more common definition of the system constant used in Kirkwood *et al.*, 1986). Transmitted power was set to 1 MW and the system noise to 120 K (actual value for some of our experiments, though the present day value is often as good as 100 K, giving a corresponding increase in the SNR). With the definition of SNR used here, a pulse repetition period of 9960 μ s and an integration time of 5 s, the SNR should be above 15% for usable plasma line spectra, suitable for electron drift measurements (experimental values Nilsson *et al.*, 1996). For Søndre Strømfjord

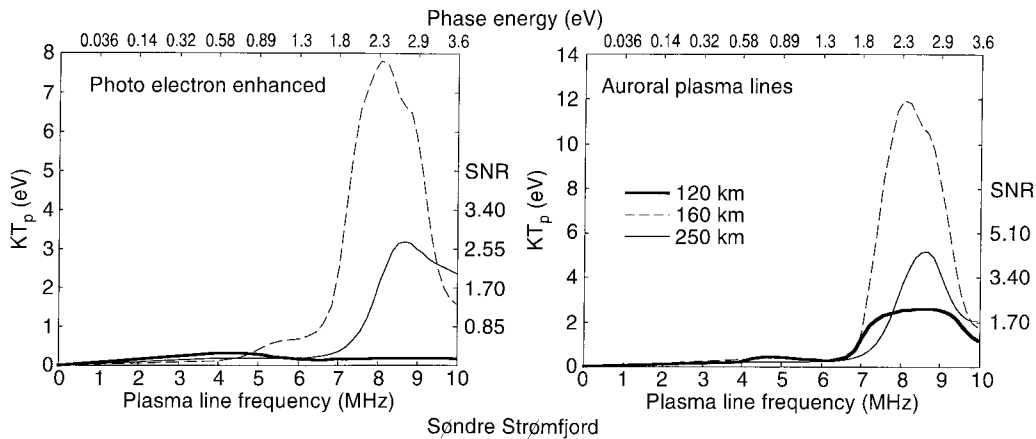


Fig. 4. Predicted plasma line strength for the Søndre Strømfjord radar for daytime and auroral conditions and three different altitudes. The *left y-axis* gives the plasma line temperature in eV, the *right y-axis* the F-region (250 km) signal-to-noise ratio for typical

conditions (see text for details). The *lower x-axis* gives the plasma line frequency, while the *upper* gives the phase energy for the resonant electrons (for comparisons with Fig. 1)

the system constant used was $C_s = 3.3 \cdot 10^{27}$ (from Valladares *et al.*, 1988), system noise 110 K and the transmitted power 4 MW. The large wave number and high transmitted power give a very good SNR for the Søndre Strømfjord radar. But if up and downshifted plasma lines cannot be measured simultaneously, which has been the case with the Søndre Strømfjord radar, the statistics are correspondingly reduced. Further, the pulse repetition used for the EISCAT UHF above is on the limit of the capabilities of the Søndre Strømfjord radar (with a duty cycle of 3%), so significantly higher SNR may be needed with the Søndre Strømfjord radar to achieve good frequency spectra estimates. In practice, plasma frequencies above 7 MHz seem to be needed for F-region plasma line measurements at Søndre Strømfjord (C. Heinselmann, private communication), in agreement with our prediction of a sharp increase in KT_p at such frequencies.

The predictions for the auroral E region have been discussed in detail by Kirkwood *et al.* (1995), and have been found to agree very well with both the measurements of the authors (from the EISCAT UHF radar) and those of Valladares *et al.* (1988) from the Søndre Strømfjord radar. Note that Valladares *et al.* (1988) present their signal strength in K relative to the system noise of 110 K, which is almost the same as SNR. The maximum signal strength detected was 40 K, which corresponds to an SNR of 36%. Estimating the altitude to 140 km, setting the wave intensity to 7 eV (Valladares *et al.*'s estimation) and the scattering range to 500 m, our model predicts an SNR of 32%.

Daytime E-region measurements have been published (Bjørnå and Kirkwood, 1986) for low plasma line frequencies of 3–4.25 MHz. These are from a range between the thermal region (no enhancement) and the photoelectron enhanced region. Simulations like those shown in Fig. 3, but using altitudes and electron temperatures given in the paper of Bjørnå and Kirkwood (1986), give plasma line temperatures in the range 0.2–0.6 eV, well consistent with those observed except for two measurement points of 1 eV plasma line temperature at 3.25 and 3.5 MHz and

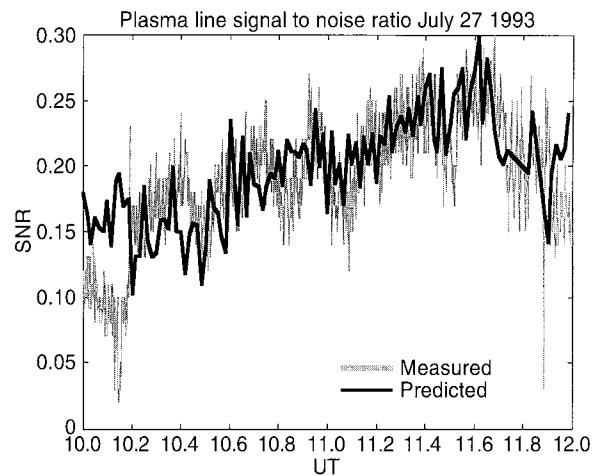


Fig. 5. Comparison between measured and predicted signal-to-noise ratio for plasma line measurements at the peak of the F region on 27 July 1993. The *thick gray line* denotes measured SNR, the *thin black line* is the theoretical value calculated from ion line parameters

130–140 km. This is about a factor of 2 more than expected which might possibly be explained by an underestimated scattering range interval in the calculation of the measured plasma line temperature.

For the test of the day time F region measurements, the F-region cut-off measurements presented in detail in Nilsson *et al.* (1996) have been used. The test here has been to calculate the SNR at the peak of the F region using the ion line measurements to determine the shape of the profile, and to compare this to the measured SNR. The result for two hours on 27 July 1993 is shown in Fig. 5, and shows an excellent agreement. The time variation in Fig. 5 comes from varying electron density, giving a plasma line frequency varying between 6.1 and 6.5 MHz. The electron temperature was close to 2300 K for all the period. For the same day, remote site measurements are also available. The predicted SNR for the two EISCAT UHF remote

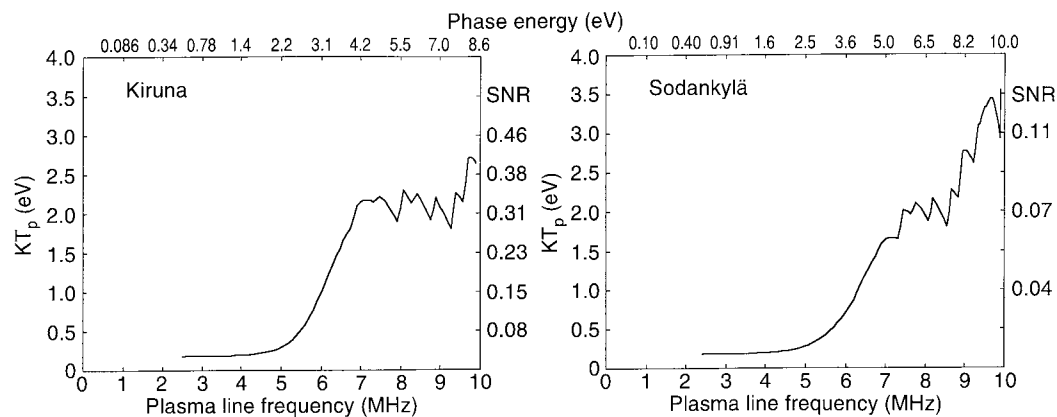


Fig. 6. Predicted plasma line strength for the EISCAT UHF remote sites (Kiruna and Sodankylä) for daytime and 250 km altitude. The *left y-axis* gives the plasma line temperature in eV, the *right y-axis* the signal-to-noise ratio for a typical experimental configuration (see

text for details). The *lower x-axis* gives the plasma line frequency, while the *upper* gives the phase energy for the resonant electrons (for comparisons with Fig. 1)

sites is shown in Fig. 6. The electron temperature has been assumed to be 2000 K, the transmitted signal to be field aligned from Tromsø, and the altitude to be 250 km. The wave numbers of the scattering waves for Kiruna were $k = 36.1 \text{ m}^{-1}$ and for Sodankylä $k = 33.3 \text{ m}^{-1}$. The main reasons for the stronger signal in Kiruna are geometrical; for Sodankylä the scattering volume is smaller (giving a factor of 2 difference as compared to Kiruna), and the range to the scattering volume is larger (giving about 50% further difference). The lower k vector for Sodankylä gives a further reduction of about 15%, and finally the larger wave vector angle to the magnetic field pushes the enhancement of the plasma line to slightly higher frequencies.

The average SNR value observed in Kiruna was 16% during the period when clear signals were received, in good agreement with the prediction of 18% for the same time interval. Some weak plasma lines were also obtained at Sodankylä, with SNR reaching at most 5%, also in accordance with the theory.

For the auroral F-region case, plasma line power profiles are available from filter bank experiments on 6 August 1990. These have been analyzed by fitting theoretical functions to the measured profiles, as discussed earlier and shown in Fig. 2. The fit consists of a minimization of the square of the difference between the model and the data. This minimization is time consuming, and sometimes fails. Thus, the fit must be manually inspected as can be done in Fig. 2. The advantage with this fit is that both the upper and lower slope and the (relatively) constant peak depend on the scattering range (and the pulse length which is known). The plasma line temperature from this analysis for the plasma line frequency of 6.4 MHz is relatively constant at around 0.7 eV for the event shown in Fig. 2. Simulations of the same time period give results averaging around 0.6 eV. This may seem low compared to the prediction in Fig. 3, the reasons being a higher electron temperature (often more than 2500 K), and an angle of 13° to the geomagnetic field during the experiment in question.

4.4 The EISCAT VHF radar

With a frequency of 224 MHz and wave number of about 9.6 m^{-1} , the electron energy range of interest to the EISCAT VHF radar is considerably higher than for the previously described radars. For most auroral cases the resonant electrons will be in the power law region above 10 eV described in Sect. 2.4 and shown in Fig. 1 (right-hand panel), giving enhancements as shown in Fig. 7. In the photo electron case the structure in the 10–20 eV region will prove to be of great importance, as can also be seen in Fig. 7 (left-hand panel). For the SNR scale, a system constant of $4.5 \cdot 10^{26}$, a system temperature of 200 K and a transmitted power of 1.5 MW were used. Note also that an angle of 13 degrees to the geomagnetic field has been used.

During the plasma line campaign in July 1993 described in Nilsson *et al.* (1996) the VHF radar was run simultaneously. Only a few very weak plasma lines were detected, at the end of the campaign when the plasma line frequency fell below 6 MHz. This is consistent with the low predicted SNR as shown in Fig. 7, increasing slightly towards lower frequencies.

A better test can be made by simulating the very good measurements published by Fredriksen *et al.* (1989). The signal strength is represented with the parameter ‘ Q ’ in their paper, which is essentially the convolved KT_p used in this paper, but with a scale factor. The VHF plasma lines were measured in three receiving channels each with 20 kHz bandwidth. By transmitting two different pulses at 224.8 and 225.4 MHz, six different frequency bands (4.0, 4.2, 4.4, 4.6, 4.8 and 5.0 MHz) were covered. In each band the signal was returned from two heights, one below and one above the F-region maximum (except for when the maximum received frequency band coincided with, or was below, the peak plasma line frequency of 5 MHz). From plate 1 in the Fredriksen *et al.* (1989) paper it is possible to determine a plasma line frequency vs. altitude profile, which can be interpolated. The theoretical plasma line enhancement along the interpolated profile can be

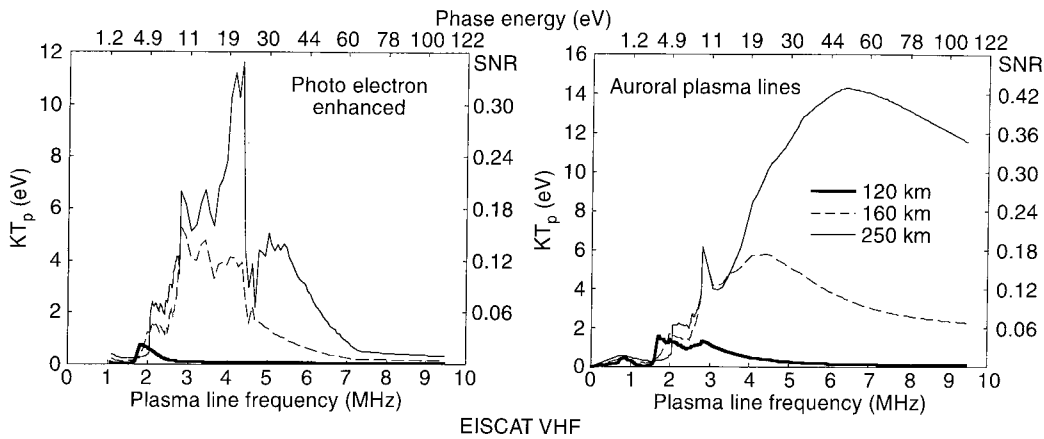


Fig. 7. Predicted plasma line strength for the EISCAT VHF radar for daytime and auroral conditions and three different altitudes. The *left y-axis* gives the plasma line temperature in eV, the *right y-axis* the F-region (250 km) signal-to-noise ratio for typical conditions (see

text for details). The *lower x-axis* gives the plasma line frequency, while the *upper* gives the phase energy for the resonant electrons (for comparisons with Fig. 1)

Table 1. The first row shows the approximate altitude of a plasma line scattering region, as estimated from plate 1 of Fredriksen *et al.* (1989). Row two shows frequency of the observed plasma lines, going from 4 up to 5 MHz, and then back down to 4 MHz above the peak

of the F region. Row 3 shows the plasma line signal strength as $\log Q$, where Q is defined in the paper of Fredriksen *et al.* (1989), whereas row 4 shows the $\log Q$ values obtained from a simulation using the model fluxes presented in this study

Altitude (km)	150	165	185	190	200	222	245	255	265	280	290
Frequency (MHz)	4.0	4.2	4.4	4.6	4.8	5.0	4.8	4.6	4.4	4.2	4.0
Log Q measured	8.7	9.4	8.9	8.9	9.3	9.9	9.7	9.7	9.2	9.4	9.7
Log Q simulated	8.6	9.4	8.8	8.6	9	9.8	9	8.8	9.4	9.5	9.6

computed and convolved with the transmitted pulse to achieve the maximum returned signal from the different scattering regions. This simulation can then be compared to the measured plasma line signal. The comparison for a sample time (10:10 UT) is given in Table 1. In the comparison it is important to note that in these measurements two different pulse lengths were used, 110 and 210 μs , not two 210 μs as is said in the paper (Fredriksen, private communication). Most features of the observations can be correctly modelled, as summarized in Table 1, i.e. the strong collisional damping of the lower 4-MHz plasma line, and the strong high altitude 4.0-, 4.2-, 4.4-MHz plasma lines. The observations from the high-altitude 4.6- and 4.8-MHz plasma lines appear strong compared to the prediction, but this may have to do with scattering range estimations. The same can account for the lower 4.2 MHz being stronger than the 4.4 MHz, which is correctly modelled through a larger scattering range. In the Fredriksen *et al.* (1989) data there is also a clear time variation in the lower 4.2-MHz plasma line strength. This is well correlated with a varying altitude of the scattering region, with the higher altitudes giving stronger plasma line signals. This can be explained by lower collisional damping at the higher altitude and agrees well with simulations. The data set clearly show that there are strong enhancements in the 4–5 MHz region, in accordance with the prediction.

4.5 The EISCAT Svalbard radar

The EISCAT Svalbard radar will operate with a frequency of 500 MHz, and the scattering wave number will thus be about 21 m^{-1} . Predictions for daytime and auroral conditions are shown in Fig. 8. The system constant used for calculating SNR was the same as for EISCAT UHF, $C_s = 1.8 \cdot 10^{27}$, the system temperature was set to 150 K, and the transmitted power 0.5 MW. The SNR values obtained are quite low, partly because of the low transmitted power but also because of the k vector dependence giving a factor about 4 less than for example, the EISCAT UHF radar. As can be seen the EISCAT Svalbard radar can be expected to see enhanced plasma lines over a broad frequency range, but the SNR may be too low to allow for good plasma line spectra measurements at the peak of the F region, unless the transmitter power can be increased.

5 Summary

The main result of this study is to show that the most promising plasma line measurements in the F region will be made with the high-frequency radars (i.e. Søndre Strømfjord and EISCAT UHF) for high solar activity (high plasma frequencies). These will then measure the strongest plasma line signals, and at the same time give the

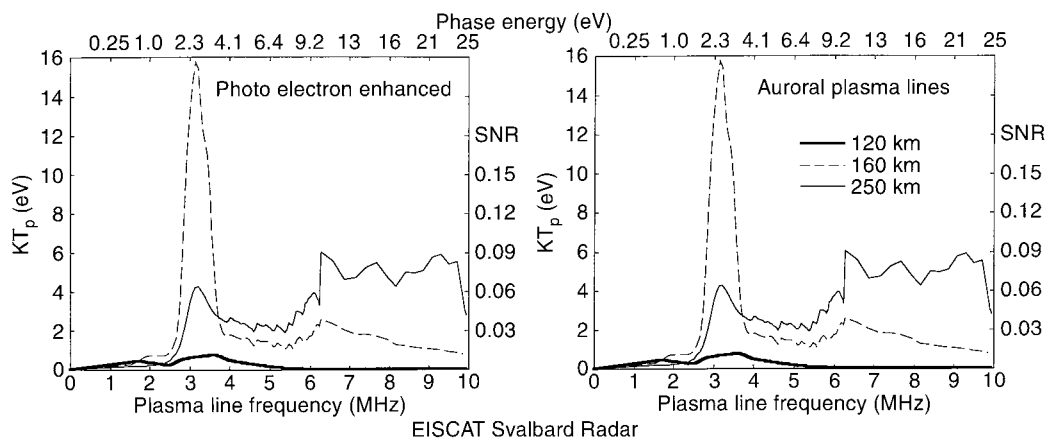


Fig. 8. Predicted plasma line strength for the EISCAT Svalbard radar for daytime and auroral conditions and three different altitudes. The *left y-axis* gives the plasma line temperature in eV, the *right y-axis* the F-region (250 km) signal-to-noise ratio for typical

conditions (see text for details). The *lower x-axis* gives the plasma line frequency, while the *upper* gives the phase energy for the resonant electrons (for comparisons with Fig. 1)

best electron drift resolution (due to the proportionality of the Doppler shift to the wave number), as compared to the lower frequency radars (i.e. EISCAT VHF and Svalbard). The lower frequency radars on the other hand, show enhancement of the plasma lines over a much broader frequency range, and can be used also during low solar activity.

In the auroral E region, where the electron density (plasma line frequency) depends on the incident energetic precipitation, the EISCAT UHF and Søndre Strømfjord radars are once more the preferred choice. The strong enhancement in the N₂ dip region give strongly enhanced plasma lines for typical auroral conditions (5–7-MHz plasma line frequency for the EISCAT UHF).

Concerning the use of plasma lines to determine suprathermal fluxes, it is found that for typical EISCAT UHF/Søndre Strømfjord F-region measurements, the phase energies of the resonant electrons are in an interval where a determination of the intensity of the flux is dependent on the competing influence of the thermal electrons. At the peak of the F region the thermal plasma is usually hot enough that there is some competition in influence between the thermal and suprathermal distributions for typical plasma line frequencies of 5–7 MHz (depending on electron temperature). Comparison between the strength of the up- and downshifted plasma line enhancement can then be used to estimate the relative upward and downward flux of electrons. However, such differences will most likely be small. The gain over the received frequency range may vary about as much (some 10%) and must be carefully estimated (for example using radio stars). Frequency differences between the up- and downshifted plasma lines may also be a problem for estimating flux anisotropy, especially at the peak of the F region where the cut-off may occur within the receiving bandwidth. Such anisotropies close to the thermal region and at the resonance frequency of the plasma line may however influence the dispersion of the plasma line (e.g. Nilsson *et al.*, 1996). It is thus worthwhile to use plasma lines to try to study such anisotropies experimentally.

For the resonant energies appropriate for typical EISCAT VHF measurements, the collisional influence is typi-

cally significant and thus allows for determination of suprathermal fluxes using plasma lines. However, using 100 times our model flux still gives further plasma line enhancements of less than 4 times, so the accuracy of the method is limited.

Acknowledgements. Topical Editor D. Alcaydé thanks T. van Eyken and another referee for their help in evaluating this paper.

References

- Birkmayer, W., and T. Hagfors, Observational technique and parameter estimation in plasma line spectrum observations of the ionosphere by chirped incoherent scatter radar, *J. Atmos. Terr. Phys.*, **48**, 1009–1019, 1986.
- Bjørnå, N., and S. Kirkwood, Observations of natural plasma lines in the E region and lower F region with the EISCAT UHF radar, *Ann. Geophysicae*, **4**, 137–144, 1986.
- Bjørnå, N., and S. Kirkwood, Derivation of ion composition from a combined ion line/plasma line incoherent scatter experiment, *J. Geophys. Res.*, **93**, 5787–5793, 1988.
- Fredriksen, Å., N. Bjørnå, and T. L. Hansen, The first EISCAT two-radar plasma-line experiment, *J. Geophys. Res.*, **94**, 2727–2731, 1989.
- Hagfors, T., and M. Lehtinen, Electron temperature derived from incoherent scatter radar observations of the plasma line frequency, *J. Geophys. Res.*, **86**, 119–124, 1981.
- Hedin, A. E., MSIS-86 thermospheric model, *J. Geophys. Res.*, **92**, 4649, 1987.
- Hedin, A. E., Extension of the MSIS thermosphere model into the middle and lower atmosphere, *J. Geophys. Res.*, **96**, 1159–1172, 1991.
- Heinselman, C. J., and J. F. Vickrey, On the frequency of Langmuir waves in the ionosphere, *J. Geophys. Res.*, **97**, 14905–14910, 1992.
- Ichimaru, S., *Statistical Plasma Physics volume 1: Basic Principles*, Addison Wesley, 1992.
- Kofman, W., J.-P. St.-Maurice, and A. P. van Eyken, Heat flow effect on the plasma line frequency, *J. Geophys. Res.*, **98**, 6079–6085, 1993.
- Kirkwood, S., and N. Bjørnå, Electron temperatures determined by tristatic plasma line observations with the EISCAT UHF incoherent scatter radar, *Geophys. Res. Lett.*, **19**, 661–664, 1992.
- Kirkwood, S., P. N. Collis, and W. Schmidt, Calibration of electron densities for the EISCAT UHF radar, *J. Atmos. Terr. Phys.*, **48**, 773–775, 1986.

- Kirkwood, S., H. Nilsson, J. Liljensten, and M. Galand**, Strongly enhanced incoherent-scatter plasma lines in aurora, *J. Geophys. Res.*, **100**, 21343–21355, 1995.
- Lummerzheim, D., and J. Liljensten**, Electron transport and energy degradation in the ionosphere: evaluation of the numerical solution, comparison with laboratory experiments, auroral observations, *Ann. Geophysicae*, **12**, 1039–1051, 1994.
- Newman, A., E. Oran**, The effects of electron-neutral collisions on the intensity of plasma lines, *J. Geophys. Res.*, **86**, 4790–4794, 1981.
- Nicolet, M.**, The collision frequency of electrons in the ionosphere, *J. Atmos. Terr. Phys.*, **3**, 200–220, 1953.
- Nilsson, H., S. Kirkwood, and N. Bjørnå**, Bistatic measurements of incoherent-scatter plasma lines, *J. Atmos. Terr. Phys.*, **58**, 175–188, 1996.
- Oran, E. S., V. Wickwar, W. Kofman, and A. L. Newman**, Auroral plasma lines: a first comparison of theory and experiment, *J. Geophys. Res.*, **86**, 199–205, 1981.
- Perkins, F., and E. E. Salpeter**, Enhancement of plasma density fluctuations by nonthermal electrons, *Phys. Rev.*, **139**, A55–62, 1965.
- Rees, M. H.**, *Physics and Chemistry of the Upper Atmosphere*, Cambridge University Press, Cambridge, 1988.
- Valladares, C. E., M. C. Kelley, and J. F. Vickrey**, Plasma line observations in the auroral oval, *J. Geophys. Res.*, **93**, 1997–2003, 1988.
- Yngvesson, K. O., and F. W. Perkins**, Radar Thomson scatter studies of photoelectrons in the ionosphere and Landau damping, *J. Geophys. Res.*, **73**, 97–110, 1968.