

# Modeling of biomass smoke injection into the lower stratosphere by a large forest fire (Part II): sensitivity studies

G. Luderer<sup>1</sup>, J. Trentmann<sup>2</sup>, T. Winterrath<sup>1</sup>, C. Textor<sup>3</sup>, M. Herzog<sup>4</sup>, H. F. Graf<sup>5</sup>, and M. O. Andreae<sup>1</sup>

<sup>1</sup>Max Planck Institute for Chemistry, Dept. Biogeochemistry, Mainz, Germany

<sup>2</sup>Institute for Atmospheric Physics, Johannes Gutenberg University Mainz, Mainz, Germany

<sup>3</sup>Service d'Aéronomie, CNRS, Paris, France

<sup>4</sup>NOAA GFDL, Princeton, New Jersey, USA

<sup>5</sup>Department of Geography, Centre of Atmospheric Science, University of Cambridge, Cambridge, UK

Received: 22 March 2006 – Published in Atmos. Chem. Phys. Discuss.: 10 July 2006

Revised: 6 November 2006 – Accepted: 6 November 2006 – Published: 17 November 2006

**Abstract.** The Chisholm forest fire that burned in Alberta, Canada, in May 2001 resulted in injection of substantial amounts of smoke into the lower stratosphere. We used the cloud-resolving plume model ATHAM (Active Tracer High resolution Atmospheric Model) to investigate the importance of different contributing factors to the severe intensification of the convection induced by the Chisholm fire and the subsequent injection of biomass smoke into the lower stratosphere. The simulations show strong sensitivity of the pyro-convection to background meteorology. This explains the observed coincidence of the convective blow-up of the fire plume and the passage of a synoptic cold front.

Furthermore, we performed model sensitivity studies to the rate of release of sensible heat and water vapor from the fire. The release of sensible heat by the fire plays a dominant role for the dynamic development of the pyro-cumulonimbus cloud (pyroCb) and the height to which smoke is transported. The convection is very sensitive to the heat flux from the fire. The emissions of water vapor play a less significant role for the injection height but enhance the amount of smoke transported beyond the tropopause level.

The aerosol burden in the plume has a strong impact on the microphysical structure of the resulting convective cloud. The dynamic evolution of the pyroCb, however, is only weakly sensitive to the abundance of cloud condensation nuclei (CCN) from the fire. In contrast to previous findings by other studies of convective clouds, we found that fire CCN have a negative effect on the convection dynamics because they give rise to a delay in the freezing of cloud droplets. Even in a simulation without fire CCN, there is no precipitation formation within the updraft region of the pyroCb. En-

hancement of convection by aerosols as reported from studies of other cases of convection is therefore not found in our study.

## 1 Introduction

Large forest fires regularly release enough energy to lift the smoke-laden air beyond the condensation level, resulting in the formation of a cumulus cloud. Deep-convective storm clouds induced by fires are often referred to as pyro-cumulonimbus (pyroCb) (Fromm et al., 2005; Damoah et al., 2006). Due to the fire emissions of sensible heat, latent heat in the form of water vapor, and aerosol particles that can act as cloud condensation nuclei (CCN), pyroCbs have unique dynamic and microphysical structures. It is well established that severe convection is an important mechanism for troposphere-to-stratosphere transport in the mid-latitudes (Wang, 2003; Mullendore et al., 2005). Similarly, pyroCbs can reach to the upper troposphere and lower stratosphere (UT/LS) (Fromm and Servranckx, 2003; Fromm et al., 2005). Due to the coincidence of the fire heating and the extremely high abundance of aerosol particles and trace gases, such as CO and NO<sub>x</sub>, in forest fire smoke, pyro-convection is a very efficient mechanism for the vertical transport of these tracers and potentially contributes substantially to their budgets in the UT/LS.

Several studies report observations of smoke gases and aerosol particles in the stratosphere. Fromm and Servranckx (2003) analyzed satellite observations of the Chisholm fire plume and showed that it resulted in injection of smoke into the lower stratosphere. The number of such reports from different years suggests that severe pyro-convection

Correspondence to: G. Luderer  
(gunnar@mpch-mainz.mpg.de)

with subsequent stratospheric injection is not a singular event but rather a fairly common phenomenon in boreal regions (Fromm et al., 2004, 2000, 2005; Waibel et al., 1999; Jost et al., 2004). Hence, biomass burning emerges as an additional, previously underestimated source of aerosol and trace gases to the UT/LS region. The residence time of smoke is greatly enhanced at such high altitudes due to the absence of efficient removal processes such as wet deposition.

Smoke aerosol particles scatter and absorb solar radiation and therefore exert a strong effect on the Earth's radiation budget. The radiative forcing significantly depends on the altitude of the aerosol, particularly in the case of absorbing aerosol (Cook and Highwood, 2004). The stratospheric aerosol burden has a substantial influence on climate. It is well established that major volcanic eruptions have resulted in significant surface cooling on timescales of up to two to three years in low latitudes and have also altered atmospheric dynamics leading to mid-latitude winter warming over the northern continents (Robock, 2000). Similar, yet weaker effects are to be expected from stratospheric layers of biomass burning smoke (Fromm et al., 2004). The injection of smoke also has the potential to significantly perturb lower stratospheric chemistry. The smoke alters the ozone chemistry through both gas phase processes induced by the injected smoke gases as well as heterogenous processes on the aerosol particles. Fromm et al. (2005) report observations of enhanced ozone in a lower stratospheric smoke plume.

Detailed investigations of pyro-convection on the spatial scale of individual events using cloud-resolving models (CRMs) are very important for the study of the vertical and cross-isentropic transport mechanisms responsible for stratospheric injection. Jost et al. (2004) reported in-situ observations of smoke, originating from a boreal forest fire, deep in the stratosphere at potential temperatures of 380 to 390 K over Florida in July 2002. They also performed calculations with a Lagrangian transport model based on the European Center for Medium Range Weather Forecasting (ECMWF) reanalysis with a horizontal resolution of  $0.5 \times 0.5$  degrees. The vertical transport in the model calculation, however, was not strong enough to reproduce the observed altitude of the smoke layer. Similarly, while Damoah et al. (2006) were able to reproduce the overall features of the smoke plume, their Lagrangian particle dispersion model simulations underestimated the observed plume height even when a convective transport parameterization was activated.

Atmospheric convection is one of the most complex problems in geophysical fluid dynamics (Emanuel, 1994). The evolution of deep convection depends on the ambient profiles of temperature, humidity and wind shear (e.g. Houze, 1993). Deep convection over land is typically initiated by inhomogeneities at the surface, such as orography, areas of low albedo and heat sources at the ground, or by frontal lifting in synoptic systems. In the case of convection triggered by forest fires, the fire emissions of sensible heat, latent heat in the form of water vapor, and aerosol particles acting as

CCN are additional parameters influencing cloud dynamics. We assessed the effects of the parameters most relevant to pyro-convection individually in a series of model simulations. These variables interact in a complex and non-linear way. Due to the complexity of our simulations and computational limitations, it was not, however, possible to perform an exhaustive number of simulations to cover the entire multi-dimensional parameter space.

The sensitivity studies presented here enable us to provide a fundamental understanding of relevant physical processes and to identify the key mechanisms for the development of the extremely vigorous pyro-convection that occurred over the Chisholm fire (Fromm and Servranckx, 2003). In the existing literature, there is not much knowledge about the relative significance of fire heating, moisture release, aerosol-microphysics interactions, and meteorology for the enhancement of wildfire-induced pyro-convection. For the scenario of large-scale urban fires created from a nuclear burst, Penner et al. (1986) concluded from numerical simulations that the amount of smoke deposited in the stratosphere critically depends on the intensity of the heat released, the background stability of the atmosphere, the amount of water vapor in the background atmosphere, and the background wind speeds. In a similar study, Small and Heikes (1988) found the sensitivity of the convection to ambient moisture to be particularly significant. This is consistent with evidence that the occurrence of pyroCb's tends to coincide with passing cold fronts, during which the convective instability and humidity of the background atmosphere is high (Fromm and Servranckx, 2003; Fromm et al., 2005). Potter (2005) postulated that moisture released by the fire itself can also play an important role in the dynamics of convection induced by wildfires.

Recent observational studies found evidence that micro-physical effects of aerosol pollution can significantly enhance the vertical development of convection. Andreae et al. (2004) reported in-situ observation of pyro-convection and cumulus convection in smoky conditions in Amazonia which was significantly more vigorous than deep convection in clean conditions. From analysis of satellite data, Koren et al. (2005) found strong correlations between aerosol abundance and cloud top pressure for convective clouds over the northern Atlantic, indicating a positive feedback of aerosol pollution and convection dynamics. A modeling study of deep-convective tropical clouds by Wang (2005) showed that increasing CCN resulted in stronger convection caused by increased condensation. Such aerosol-cloud interactions, however, critically depend on the specific temperature and humidity profiles (Graf, 2004). Despite early work that indicated that aerosol particles contained in the smoke can be quite efficient ice nuclei (IN) (Hobbs and Locatelli, 1969), there is great uncertainty about their number densities and properties. Due to the lack of data and computational constraints, ice nuclei are not considered explicitly in the model.

The Chisholm fire was located at  $54.5^\circ$  N,  $114.5^\circ$  W in Alberta, Canada and resulted in severe pyro-convection on

28/29 May 2001. It is a particularly well documented case of biomass smoke injection into the stratosphere and therefore is well suited as a case study. In their paper, Fromm and Servranckx (2003) were able to establish a direct connection between the observations of the Chisholm pyroCb convection and a smoke layer that was observed in the UT/LS region in the subsequent days. This event gave rise to significantly enhanced lower stratospheric aerosol burden in the northern summer of 2001 (Fromm and Servranckx, 2003). Analysis of remote sensing data from space-borne platforms as well as RADAR data provide us with a detailed picture of the evolution of this pyroCb event (Rosenfeld et al., 2006).

Here and in the companion paper by Trentmann et al. (2006) we present, for the first time, three-dimensional model simulations of wildfire-induced cross-tropopause transport of biomass burning smoke and its sensitivity to fire activity and background meteorology. Whereas Trentmann et al. (2006) present and discuss the results from the reference simulation, this paper focuses on the sensitivity studies conducted. It is organized as follows. In the next section, the ATHAM model and its setup for the simulation of the Chisholm fire are described. The variability of various parameters is discussed and the sensitivity studies conducted are described in Sect. 3. Results from the sensitivity studies are presented and discussed in Sect. 4. A summary and concluding remarks follow in the last section.

## 2 Model setup

All simulations presented here were performed with the Active Tracer High resolution Atmospheric Model (ATHAM) (Oberhuber et al., 1998; Graf et al., 1999; Herzog et al., 1998). The dynamic core of ATHAM is based on a centered differences discretization of the governing equations. The tracer advection is formulated in mass-conserving form. For realistic simulation of entrainment of environmental air into the plume, sub-grid scale turbulence is explicitly parameterized using an extended turbulent kinetic energy (TKE) approach. In this scheme, TKE is a prognostic variable of the model from which the turbulent exchange coefficients are derived (Herzog et al., 2003). The microphysics is represented using a two-moment scheme with four hydrometeor classes (cloud droplets, rain drops, small ice crystals, graupel) (Textor et al., 2006a,b; Trentmann et al., 2006). For each of these classes, number densities and mass mixing ratios are predicted. A total of 13 processes describe the transfer of water between these four classes and the gas phase. Based on numerical studies using a parcel model with explicit bin microphysics (Simmel and Wurzel, 2006), the fraction of smoke particles activated into cloud droplets was assumed to be 5 % (M. Simmel, personal communication, 2003). Heterogeneous freezing of hydrometeors is represented according to the stochastic hypothesis by Bigg (1953). Below a size dependant threshold temperature of about  $-36$  to  $-40^{\circ}\text{C}$

(Pruppacher and Klett, 1997) instant homogeneous freezing of all liquid hydrometeors is implemented.

For all simulation runs presented here, the model was set up in the same way as described in Trentmann et al. (2006). The fire forcing is assumed to be constant during the time span simulated and represented as a rectangular front of 15 000 m length and 500 m width. The model domain is 85 km in the direction along the fire front and 65 km across, with the upper boundary at 26 000 m. The number of grid points used is  $110 \times 85$  in the x- and y-directions and 100 in the z-direction. We used a focusing grid with maximum resolution at the fire and its vicinity, where the gradients of tracer concentrations and temperature are largest. Towards the edges of the model domain, the grid spacing is larger. In the horizontal, the minimum grid spacing was set to 100 m perpendicular to the fire front and 500 m along the front. In the vertical, we used two regions of enhanced spatial resolution: the grid spacing was 50 m at the ground and, for more accurate simulation of troposphere-to-stratosphere transport, 150 m at the tropopause. In the mid-troposphere, the maximum vertical spacing was 300 m.

The reference simulation (REF) is identical to the simulation presented in Trentmann et al. (2006). The fire was assumed to consume  $9 \text{ kg m}^{-2}$  with a rate of spread of  $1.5 \text{ m s}^{-1}$ . In this simulation run we assumed that 100% of the fire energy goes into the heating of the atmospheric layer over the fire, i.e., radiative losses were assumed to be zero. A fuel moisture value of 40% based on dry fuel mass was assumed. For the aerosol emissions, we used an emission factor for total particulate matter (TPM) of  $17.6 \text{ gTPM kg}_{\text{fuel}}^{-1}$  (Andreae and Merlet, 2001) and assumed a volume mean diameter of  $0.2 \mu\text{m}$ , which is consistent with Reid et al. (2005). Based on parcel model studies (Martin Simmel, personal communication, 2003), we estimated that 5% of the aerosol particles from the fire become activated as cloud droplets. This results in an effective CCN flux of  $2.1 \times 10^5 \text{ m}^{-1} \text{ s}^{-1}$  per unit length of the fire front. Background meteorology was adopted from radiosonde observations that were performed at Edmonton ( $53.5^{\circ} \text{ N}$ ,  $114.1^{\circ} \text{ W}$ ), about 150 km south of the fire location, at 00:00 UTC, shortly before the time of the blow-up and is likely to closely match the meteorological background condition for the Chisholm pyroCb.

## 3 Sensitivity studies conducted

### 3.1 Fire activity

The combustion of biomass results in enormous emissions of sensible heat, latent heat in the form of water vapor, aerosol particles, and trace gases from forest fires. The emission of sensible heat clearly plays an important role in triggering convection and in adding to the buoyancy of smoky air parcels relative to the ambient air. For given assumptions on the amount of fuel burned, heat of combustion and rate

**Table 1.** Values of fire emissions of sensible heat, moisture, and CCN number used in the experiments studying the sensitivity to fire activity. All quantities are given in per unit fire front length.

Simulation run	Heat $10^6 \text{ W m}^{-1}$	Moisture $\text{kg (m s)}^{-1}$	CCN $10^{12} (\text{m s})^{-1}$
REF	239	12.2	41.8
SH50	119	12.2	41.8
SH25	60	12.2	41.8
loCCN	239	12.2	0
noH2O	239	0	41.8

of spread, the head fire intensity, i.e., the combustion energy per unit time and unit length of the fire front, can be readily calculated (Byram, 1959). In the case of the Chisholm fire, these values are documented and discussed in ASRD (2001). Large uncertainties are associated with these values, however. In addition, the fraction of the combustion energy that is lost radiatively without becoming available for the convection is highly uncertain (Trentmann et al., 2006).

In order to assess the role of the fire sensible heat for the Chisholm pyro-convection, the two experiments SH50 and SH25 were conducted for which the sensible heat flux from the fire was reduced to 50 and 25% of the reference value, respectively (Table 1).

The combustion of biomass results not only in emission of sensible heat, but also releases water vapor. Moisture is released through the chemical transformation of the carbohydrates (combustion moisture) as well as the evaporation of water that was already contained in the fuel tissue (fuel moisture). According to the stoichiometric equation for the combustion process (Byram, 1959), in addition to the fuel moisture, about 0.5 kg of combustion moisture are released per kg of fuel. Due to the large amount of duff burned, we estimated that the effective fuel moisture content was 40%, which yields total water emissions of  $0.9 \text{ kg}_{\text{H}_2\text{O}} \text{ kg}_{\text{fuel}}^{-1}$  (Trentmann et al., 2006). For the investigation of its impact on the pyro-convection, the simulation noH2O was set up neglecting water vapor emissions from the fire.

Since aerosol particles act as cloud condensation nuclei (CCN), the cloud microphysics is strongly affected by their abundance. It is well established that increased availability of condensation nuclei in polluted clouds results in a much larger number of cloud droplets being activated compared to clean clouds, giving rise to the indirect aerosol effects (Lohmann and Feichter, 2005). Droplets compete for a given amount of water vapor available, therefore the droplet size distribution in polluted clouds is shifted to much smaller sizes. As various microphysical processes are strongly sensitive to the droplet size, the change in size spectrum induced by pollution with aerosol significantly alters the cloud properties and precipitation efficiency.

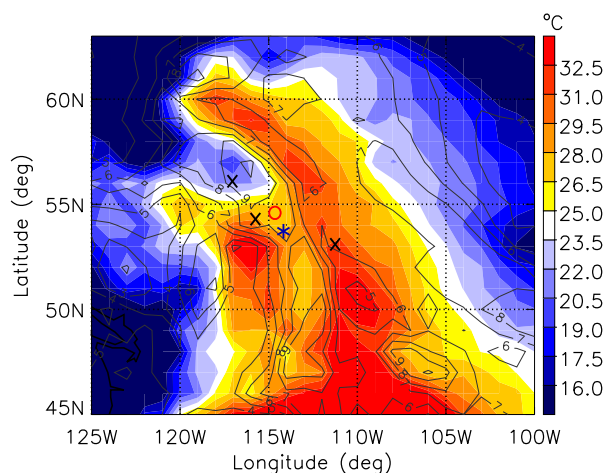
For deep-convective cloud systems, aerosol-microphysics interactions can have a strong impact on the convection dynamics. As proposed by Rosenfeld (2000), pollution from aerosols can result in vertically delayed onset or even complete suppression of precipitation through warm rain formation. On the other hand, if the convection is sufficiently strong, mixed phase microphysics may lead to stronger precipitation higher up (Andreae et al., 2004). The smoke emitted by the fire contains large numbers of aerosol particles acting as CCN. The co-existence of strong deep convection and extreme aerosol concentration makes pyro-clouds well-suited objects for the study of aerosol-microphysics interactions and their impact on convection dynamics. At the same time, pyro-clouds are peculiar in their dynamic structure because of the extreme vigor induced by the heating from the fire. There is also a strong influence of the dynamics, particularly the updraft velocities, on cloud microphysics and precipitation formation. In smoky environments and pyro-convection in the Amazon region, Andreae et al. (2004) observed strongly delayed onset of precipitation compared to clouds in clean conditions. Andreae et al. (2004) indicate that the delay of precipitation formation beyond the glaciation level and subsequent release of additional latent heat might be an important mechanism for the invigoration of pyroCb compared to convection in clean environments.

In the experiment loCCN, we tested the sensitivity of the Chisholm pyroCb to the enhanced availability of CCN from the fire by performing a sensitivity study in which we assumed that the aerosol particles emitted by the fires are inactive as CCN. In this scenario, the formation of clouds was based on the assumption of a CCN concentration of  $200 \text{ cm}^{-3}$ , a value representative of clean conditions in remote continental areas (Pruppacher and Klett, 1997).

### 3.2 Background meteorology

The development of extremely strong pyroCbs in boreal regions is almost always observed to coincide with the passage of synoptic cold fronts (Fromm et al., 2000, 2005; Fromm and Servranckx, 2003). Typically, large pyroCb events are favored when hot and dry air masses associated with a high pressure system are replaced by colder, less stable air masses.

There are clear indications for a connection between a passing cold front and the intensification of the convection induced by the Chisholm fire. The development of the Chisholm pyroCb was captured by remote sensing from several platforms (Rosenfeld et al., 2006). RADAR observations show a convective rain band propagating through the fire region from the southwest, a typical signature of a cold front. Whereas the fire convection was moderate and fanning before the passage of the front, it intensified into severe pyro-convection at 02:00 UTC, exactly upon the arrival of the rain band. Similarly, observations from the Advanced Very-High Resolution Radiometer (AVHRR) show that the blow-up occurred during the passage of the cloud band associated with



**Fig. 1.** Surface fields of potential temperature (color shading) and specific humidity (contour lines) from ECMWF operational reanalysis for southwestern Canada. The red circle indicates the fire location, the blue asterisk is at the position where the radiosonde was launched ( $53.5^{\circ}$  N,  $114^{\circ}$  W), and black crosses indicate the locations from which profiles representative of pre-frontal ( $53^{\circ}$  N,  $111^{\circ}$  W), frontal ( $54^{\circ}$  N,  $116^{\circ}$  W) and post-frontal ( $56^{\circ}$  N,  $117^{\circ}$  W) conditions were adopted.

the cold front (Fromm and Servranckx, 2003). As measured by the automated weather stations in the Chisholm region, temperature dropped by more than 10 K between 1700 and 2000 LT (23:00–02:00 UTC) on 28/29 May (ASRD, 2001), just before the pyro-convection was observed to peak by the RADAR observations. This temperature decrease occurred before sunset and is much greater than the typical diurnal variation in the late afternoon.

Meteorological conditions affect deep pyro-convection in several ways. As shown for the reference simulation (Trentmann et al., 2006), the energy budget of the Chisholm pyroCb is dominated by the release of latent heat from condensing water vapor. Most of this water vapor, however, is entrained from the ambient atmosphere, whereas the contribution of the water vapor released by the fire accounts for only a small fraction of less than 10% (Trentmann et al., 2006). This underlines the dominant role of atmospheric conditions, especially the convective instability, humidity and wind shear for the evolution of pyro-convection. Wind speed and wind shear affect turbulent mixing and hence the amount of entrainment at various altitude levels. For the case of the Chisholm pyroCb, the amount of air entrained from intermediate tropospheric altitude levels is comparable to the entrainment within the boundary layer (Trentmann et al., 2006). This has important implications for the sensitivity of the convection to the meteorological conditions, i.e., temperature, humidity and wind field in the middle troposphere.

Since the fire front is approximately linear, the orientation of the low level wind field relative to the fire front plays an

**Table 2.** Background meteorological profiles used for the experiments studying the sensitivity to background meteorology. CAPE, water vapor column (WVC) and equivalent potential temperature  $\theta_e$  in the boundary layer are given for comparison between the three simulations based on ECMWF meteorology and the reference simulation.

Simulation run	Location	CAPE [ $\text{J kg}^{-1}$ ]	WVC [ $\text{kg m}^{-2}$ ]	$\theta_e$ [K]
PRE	$53^{\circ}$ N, $111^{\circ}$ W	40	17.8	319
FRONT	$54^{\circ}$ N, $116^{\circ}$ W	1170	23.4	322
POST	$56^{\circ}$ N, $117^{\circ}$ W	30	21.5	317
REF	$53.5^{\circ}$ N, $114^{\circ}$ W	131	22.0	321

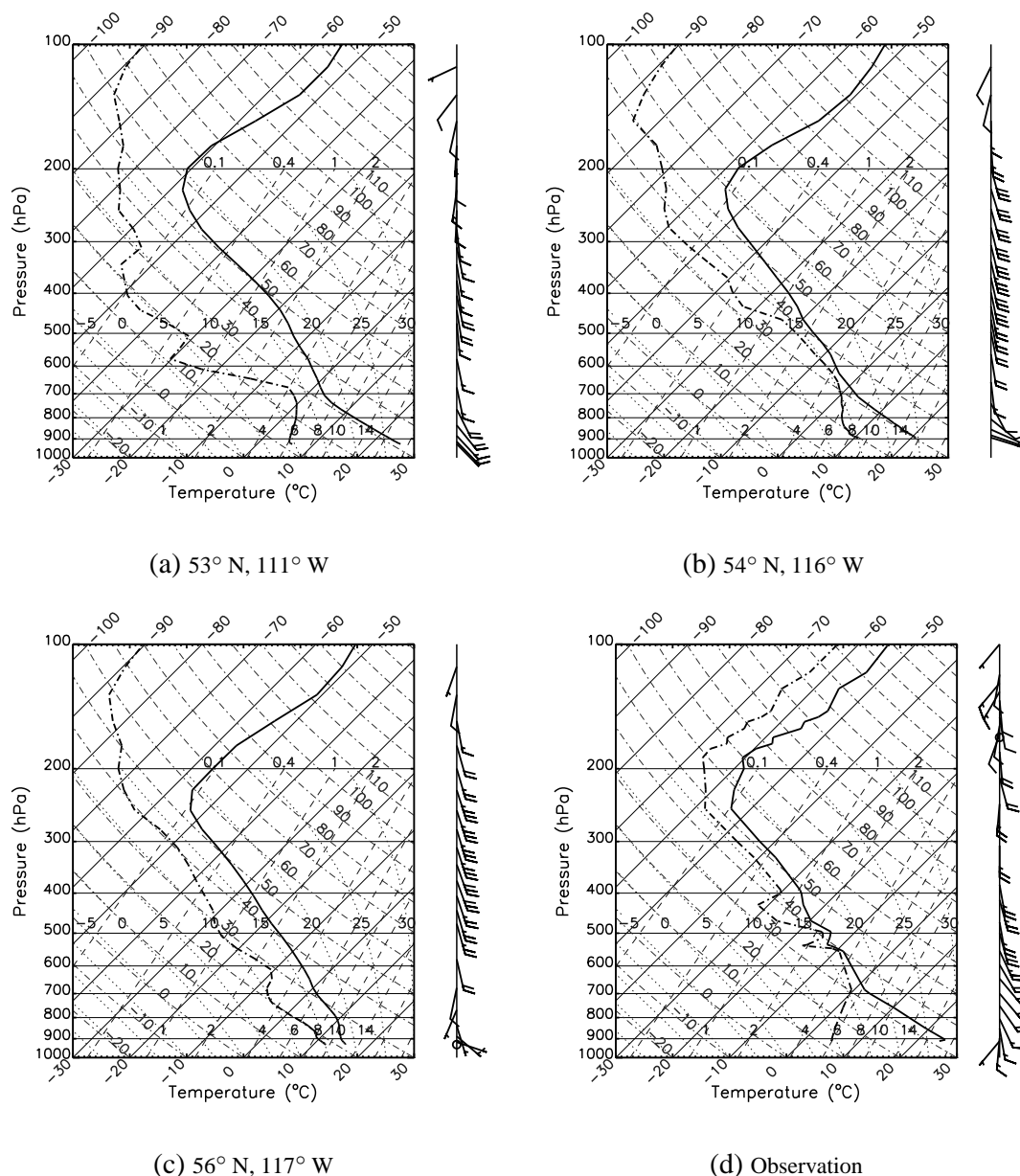
important role. The passing cold front resulted in a change of the wind field, with surface wind gusts from changing directions (ASRD, 2001). During the passage of the cold front, the surface wind was oriented almost parallel to the fire front. In this configuration, the air parcels were advected along the fire front, exposing them to the heating of the fire for a maximum period of time while minimizing the entrainment of ambient air.

Since we did not explicitly represent the feedback of the atmospheric conditions on the fire behavior in ATHAM, the assessment of the contribution of the atmosphere-fire-feedback to the sensitivity to background meteorology is not considered in this study. For our simulations, the fire activity as well as fluxes of sensible heat, moisture and aerosol particles were prescribed based on the observed fire activity as documented in ASRD (2001).

The meteorological situation at the time of the blowup is depicted in Fig. 1. For the reference simulation, we used the sounding from RAOB station 71 119 (Edmonton, 150 km south of the fire) launched at 00:00 UTC.

In a set of sensitivity experiments, we assessed the influence of changing background meteorology on the fire convection. Since there were not a sufficient number of observations available, we relied on ECMWF reanalysis data for this purpose. We chose three meteorological profiles representative of pre-frontal (simulation PRE), frontal (FRONT), and post-frontal (POST) conditions from different locations in the operational ECMWF reanalysis for 29 May 2001, 00:00 UTC (Fig. 1). For these three experiments, all parameters describing the fire forcing, namely the geometry of the forcing and the release of sensible heat, water vapor, as well as aerosol particles were set equal to those in REF.

The vertical profiles of temperature, dew point temperature, and wind vectors used are depicted in skew  $T$ -log( $p$ ) diagrams in Figs. 2a–c. For comparison, the radiosonde sounding from  $53.5^{\circ}$  N,  $114.1^{\circ}$  W at 00:00 UTC, which was used for the reference simulation, is shown in Fig. 4d. Table 2 gives values for convective available potential energy (CAPE), water vapor column, and equivalent potential temperature for the four profiles.

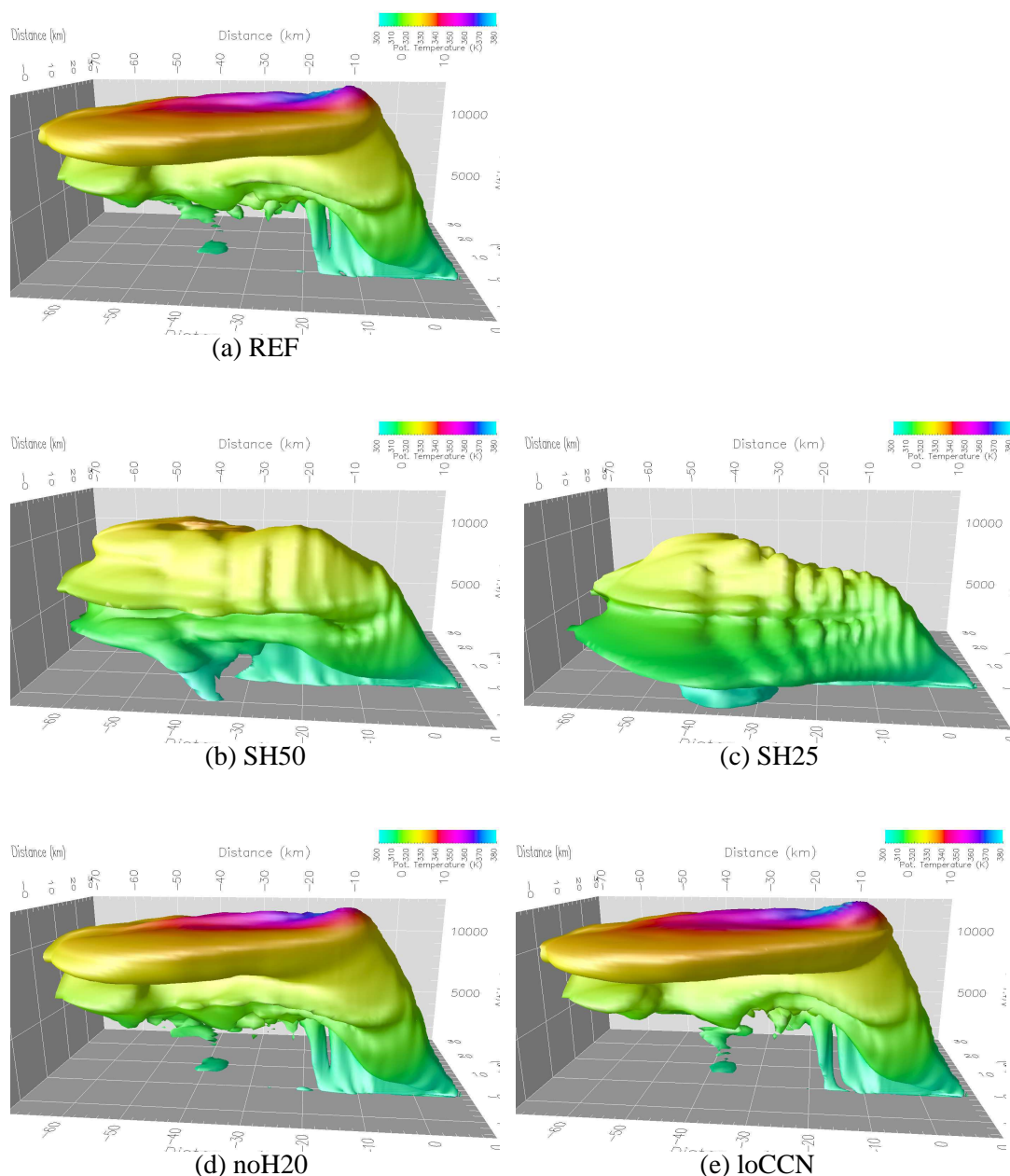


**Fig. 2.** Profiles of temperature (dash-dotted) and dew point temperature profiles (solid) from ECMWF reanalysis for (a) pre-frontal, (b) frontal, (c) post-frontal conditions as well as (d) from radiosonde observations at 53.5° N, 114° W in skew  $T$ -log  $p$  representation. Arrows indicate vertical wind profiles with every full barb corresponding to  $10 \text{ m s}^{-1}$ . Thin skewed solid lines represent lines of constant temperature. Water vapor mixing ratios are given by the thin dashed lines. Dry adiabats are plotted as thin dash-dotted lines. Pseudo-adiabats are represented as thin dotted lines.

The pre-frontal profile (53° N, 111° W) is characterized by rather warm temperatures throughout the lower and middle troposphere with low relative humidities around 30–40% at low levels and very dry air masses in the middle and upper troposphere above 600 hPa. In the boundary layer, the stratification is approximately neutral, and the temperature gradient is close to the saturated adiabatic lapse rate in the free tro-

posphere. The low level wind speed is about  $17 \text{ m s}^{-1}$  from southeasterly directions.

For the frontal profile (54° N, 116° W), the boundary layer is still warm, whereas the free troposphere is already influenced by colder air masses. The air is rather moist throughout the lower and middle troposphere up to about 400 hPa. At this level, the wind continues to blow from



**Fig. 3.**  $100 \mu\text{g m}^{-3}$  iso-surface of aerosol concentration after 40 min integration time for (a) the reference simulation, (b) the sensitivity studies SH50, (c) SH25, (d) noH2O, and (e) loCCN. The color shading indicates potential temperature.

southeasterly directions at slightly lower wind speeds than in the pre-frontal profile. At higher levels, in contrast, the upper level trough gives rise to strong southerly winds of around  $30 \text{ m s}^{-1}$ .

The post-frontal profile ( $56^\circ \text{ W}$ ,  $117^\circ \text{ N}$ ) is characterized by low level temperatures that are significantly cooler than in the pre-frontal and frontal profiles. The relative humidity is high in the boundary layer, but decreases strongly in the free troposphere. The atmosphere is stably stratified in

the lower troposphere and the temperature decreases with an approximately moist-adiabatic lapse rate in the free troposphere. Whereas low level winds are rather weak, there is a strongly pronounced upper level jet blowing from southerly directions similar to the frontal profile.

Due to the high humidity and warm temperatures, the equivalent potential temperature in the boundary layer is greatest for frontal conditions (Table 2). Using parcel theory, its convective instability can be quantified in



terms of the convective available potential energy (CAPE) (Emanuel, 1994). It is greatest for the frontal profile with  $\text{CAPE}=1170\text{ J kg}^{-1}$ . For both the pre- and post-frontal profiles, the convective instability is rather low, with CAPE values of 40 and  $30\text{ J kg}^{-1}$ , respectively.

The radiosonde profile used for REF features a deep boundary layer similar to PRE with warm temperatures and 30% relative humidity at the surface. Due to the low humidity levels close to the ground, the nominal CAPE value for PRE is much lower than the one obtained for REF. Above 700 hPa, by contrast, the sounding is moist with humidities close to saturation. There is substantial entrainment of air into the pyroCb at intermediate levels, therefore the humidity there strongly influences the convection, which is not reflected in the calculation of CAPE. Upper level winds are significantly weaker than in FRONT and POST. Surface winds blow from the south and veer to southeasterly directions in the free troposphere.

## 4 Results

### 4.1 Definitions and analysis methods

We used different parameters and analysis methods to characterize the results from the various numerical experiments. The relevant definitions are introduced in the following. The resulting numerical values are summarized in Tables 3 and 4. Figures 3 and 8 show 3-D visualizations of the modeled smoke plumes as  $100\text{ }\mu\text{g m}^{-3}$  aerosol iso-surfaces with potential temperature as color shading.

Stratospheric penetration and the height to which the smoke is transported were assessed by means of the vertical aerosol distribution as a function of geometrical height (Fig. 4a) and potential temperature (Fig. 4b). The outflow height  $z_{\text{out}}$  was defined as the geometrical level of the maximum of the vertical aerosol profile. We also defined the maximum penetration height  $z_{\text{max}}$  as the level below which 99% of the aerosol mass is located. All altitude levels are given as height above sea level. The ground level was 695 m, 940 m and 640 m, for PRE, FRONT and POST, respectively, and 770 m for REF.

In the absence of diabatic processes (radiation, microphysical processes, turbulent mixing), long range transport of air parcels in the lower stratosphere occurs along isentropes. The aerosol mass distribution as a function of potential temperature (Fig. 4b) is therefore useful for the assessment of troposphere-to-stratosphere transport. Due to the large gradients of the potential temperature at the tropopause and above, this region is better resolved in this representation compared to the lower troposphere. In order to better represent the low yet significant aerosol mass above the tropopause we used a logarithmic scale. We masked out the region of high temperatures directly above the fire by only considering aerosol above 5 km.

The dynamical tropopause ( $\text{PV}=2\text{ PVU}$ ) over the Chisholm region was located at a potential temperature of about 332 K at 11 km altitude. The stratospheric aerosol injection was estimated as total mass,  $m_{\text{as}}$ , above this potential temperature level. The tropopause level was similar for the PRE, FRONT, and POST profiles, hence for all simulation runs the same threshold value of 332 K was assumed for the estimation of aerosol injection into the stratosphere.

Whereas  $m_{\text{as}}$  is very useful for comparing the different simulations, its absolute value should be treated with caution. Due to the large vertical gradient in the aerosol concentration near the tropopause, it is extremely sensitive to the tropopause definition and the simulation time. Since our simulations did not account for removal by scavenging of interstitial aerosol particles, the numerical value of  $m_{\text{as}}$  can be considered an estimate of the upper limit of aerosol mass injected into the stratosphere.

We also used different parameters to characterize the vigor and the energy budget of the pyro-convection for the various cases. The maximum vertical velocity  $w_{\text{max}}$  is located close to the ground and mostly influenced by the fire forcing. Therefore, we additionally defined the mean updraft velocity as a parameter that is more characteristic of the convection throughout the entire vertical column of the cloud:

$$\bar{w} = \frac{1}{\int c_a dV} \int w c_a dV. \quad (1)$$

In order to represent the conditions in the updraft region of the pyro-cloud, the integration was performed over all grid boxes with more than  $0.05\text{ g kg}^{-1}$  hydrometeor content and vertical velocity  $w \geq 5\text{ m s}^{-1}$ , and the aerosol mass concentration  $c_a$  was used as a weight function.

For the characterization of the pyroCb's updraft region, we defined the mean vertical profile of any quantity  $Q$  as

$$\bar{Q}(z) = \frac{\int Q(x, y, z) w(x, y, z) c_a(x, y, z) dx dy}{\int w c_a dx dy}, \quad (2)$$

where the vertical aerosol flux  $w c_a$  was used as a weight function and the integration was performed for  $w > 0$ .

Vertical profiles of the buoyancy and the mean hydrometeor mixing ratio are depicted in Figs. 5 and 10. The buoyancy  $b$  was calculated as

$$b(x, y, z) = g \frac{\rho(x, y, z) - \rho_e(z)}{\rho_e(z)}, \quad (3)$$

where  $g$  is the acceleration of gravity and the in situ density  $\rho(x, y, z)$  and environmental density  $\rho_e(z)$  were determined with consideration of the density effects of water vapor and hydrometeor content.

The vertical mean buoyancy  $\bar{b}$  can be readily determined according to Eq. (2). The integrated buoyancy  $IB$  can then be defined as

$$IB = \int_{z_0}^{z_{\text{LNB}}} \bar{b}(z) dz, \quad (4)$$



**Table 3.** Numerical values of outflow height  $z_{\text{out}}$ , maximum penetration height  $z_{\text{max}}$ , mean updraft velocity  $\bar{w}$ , integrated buoyancy  $IB$ , total hydrometeor mass  $m_{ht}$ , and stratospheric aerosol injection  $m_{as}$  obtained for simulation runs with different fire activity after 40 min integration time. See text for definition of these quantities.

Simulation run	$z_{\text{out}}$ [km]	$z_{\text{max}}$ [km]	$w_{\text{max}}$ [m s <sup>-1</sup> ]	$\bar{w}$ [m s <sup>-1</sup> ]	$IB$ [kJ kg <sup>-1</sup> ]	$m_{ht}$ [10 <sup>9</sup> kg]	$m_{as}$ [10 <sup>3</sup> kg]
REF	10.6	12.2	38.0	18.1	2.07	9.7	710
SH50	8.1	10.7	29.0	11.8	1.11	6.1	1.4
SH25	7.0	9.5	23.2	8.7	0.61	2.9	0
noH2O	10.4	11.9	37.5	17.1	2.02	9.0	430
loCCN	10.6	12.3	38.0	19.0	2.13	9.8	890

**Table 4.** Numerical values of outflow height  $z_o$ , maximum penetration height  $z_{\text{max}}$ , mean updraft velocity  $\bar{w}$ , integrated buoyancy  $IB$ , total hydrometeor mass  $m_{ht}$ , and stratospheric aerosol injection  $m_{as}$  obtained for simulation runs with different meteorological setups after 30 min integration time.

Simulation run	$z_{\text{out}}$ [km]	$z_{\text{max}}$ [km]	$w_{\text{max}}$ [m s <sup>-1</sup> ]	$\bar{w}$ [m s <sup>-1</sup> ]	$IB$ [kJ kg <sup>-1</sup> ]	$m_{ht}$ [10 <sup>9</sup> kg]	$m_{as}$ [10 <sup>3</sup> kg]
PRE	6.0	10.8	41.6	16.8	1.97	2.5	12
FRONT	10.2	11.8	40.5	17.2	2.29	6.2	350
POST	6.6	9.7	41.2	15.3	1.86	3.5	2.3
REF	10.6	12.1	38.2	16.8	2.04	6.4	300

where the integration is performed from ground level  $Z_0$  to the level of neutral buoyancy  $Z_{\text{LNB}}$  with  $\bar{b}(Z_{\text{LNB}})=0$ .  $IB$  indicates the amount of potential energy a smoky air parcel extracts from its buoyancy traveling from the fire to its LNB. It is closely related to CAPE. Whereas the CAPE concept considers the energy of an air parcel traveling from the boundary layer to its LNB and neglects effects of mixing, the  $IB$  concept calculates the effective energy for the vertical column under full consideration of entrainment, and also accounts for the effects of additional heat sources such as the fire forcing. In contrast to CAPE, however, detailed information about vertical profiles of temperature, moisture and hydrometeor loading within the convection is required.

The results obtained for the reference simulation REF are presented in detail in Trentmann et al. (2006). In the following, the results of the sensitivity experiments are compared with those of REF.

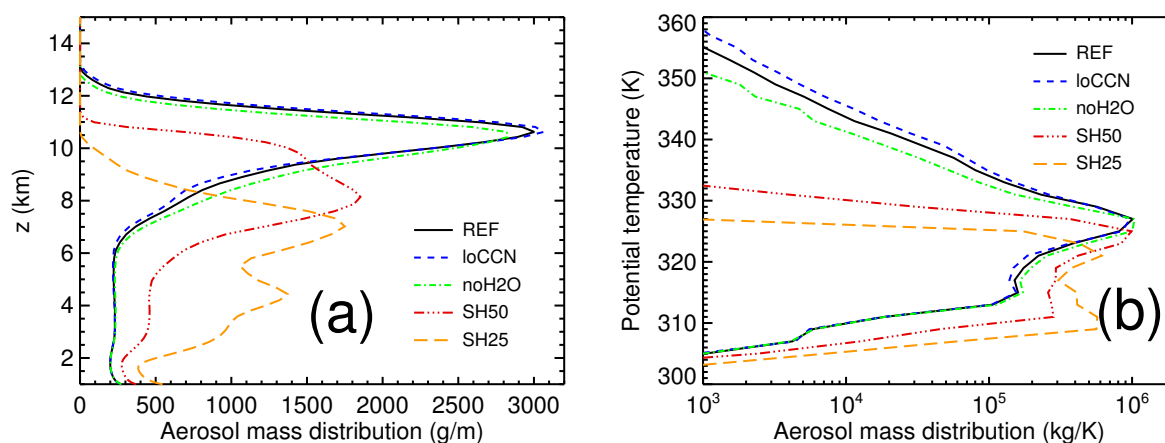
#### 4.2 Fire release of sensible heat

From the results obtained for SH50 and SH25, the sensitivity studies with the sensible heat release from the fire reduced to 50 and 25% of the original value, respectively, a strong dependence of the cloud vertical plume development on the fire heating is clearly evident (Figs. 3 and 4). In the reference simulation REF most of the smoke outflow from the pyroCb occurs in the tropopause region and slightly below. Stratospheric penetration can be inferred from the high potential temperatures at the plume top, with red, purple

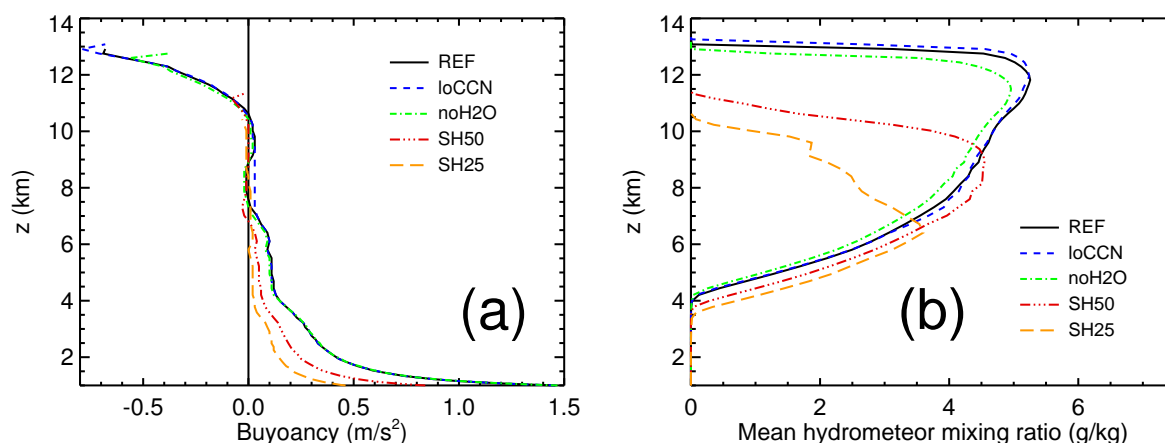
and blue colors in Fig. 3a indicating potential temperatures above  $\sim 335$  K. The plume exhibits a region where the cloud-aerosol mixture overshoots beyond the level of the anvil. Near the overshoot, the plume reaches maximum potential temperatures in excess of 350 K. Satellite observations of this “warm core” were also reported by Fromm and Servranckx (2003). By contrast, for the SH50 simulation and to a yet larger extent for SH25, the vertical development of the plume is much weaker with a much less established updraft region (Fig. 3b, c). Gravity-wave-like features are apparent, however there is no distinct overshoot nor any warm core region. In both simulations, the plumes do not reach beyond the tropopause and remain at tropospheric potential temperature and altitude levels.

For the simulations with reduced sensible heat release, the vertical distribution of aerosol mass is more diffuse and strongly shifted towards lower altitudes (Fig. 4a), with outflow heights at 8.1 km for SH50 and 7.0 km for SH25, compared to 10.6 km for REF. REF had a maximum penetration height  $z_{\text{max}}=12.2$  km, whereas SH50 and SH25 only reached to  $z_{\text{max}}=10.7$  km and  $z_{\text{max}}=9.5$  km, respectively (Table 3).

In Fig. 4b, the difference between SH25, SH50 and REF is even more evident than in Fig. 4a. In REF,  $7.1 \times 10^5$  kg of aerosol mass, a minor yet significant fraction (8.0%) of the total  $8.9 \times 10^6$  kg of aerosol released by the fire, is injected above the tropopause after 40 min integration time. Both the SH50 and the SH25 plumes, on the other hand, are not able to overcome the tropopause mixing barrier. The SH50 plume features large amounts of aerosol mass in the upper



**Fig. 4.** Vertical distribution of aerosol mass as a function of altitude (a) and as a function of potential temperature (b) after 40 min integration time. The 2 PVU tropopause is located at 332 K/11.0 km.



**Fig. 5.** Vertical profiles of (a) mean buoyancy  $\bar{b}$  and (b) mean hydrometeor content in the pyroCb's updraft region.

troposphere with the maximum of the distribution about 5 K below the tropopause, however there is almost no aerosol above 332 K (Fig. 4b).

Both the  $\bar{w}$  and  $w_{\max}$  strongly depend on the amount of sensible heat released by the fire:  $\bar{w}$  after 40 min integration time drops from 18.1 m/s for REF to 11.8 m/s for SH50 and 8.7 m/s for SH25, with a similar decrease in  $w_{\max}$  (3).  $IB$  was found to be almost linearly proportional to the released sensible heat: Whereas REF resulted in a value of 2070 J/kg,  $IB$  was reduced to 1110 J/kg for SH50 and 610 J/kg for SH25.

Also the hydrometeor formation is very sensitive to the sensible heat forcing by the fire. After 40 min,  $9.7 \times 10^9$  kg of hydrometeor mass was formed in REF, significantly more than the  $6.1 \times 10^9$  kg and  $2.9 \times 10^9$  kg obtained for SH50 and SH25, respectively. The vertical profiles of hydrometeor

mixing ratios (Fig. 5b) show that particularly at higher levels much less water is condensed for SH50 and SH25, because the pyroCbs do not reach as high and become diluted at a much lower level. Hence, the higher the release of sensible heat by the fire, the more efficient is the pyroCb at accessing the latent heat available from the background and fire moisture. Considering that the latent heat from the condensation of hydrometeors contributes much more to the potential temperature gain of air parcels in the pyroCb than the fire energy (Trentmann et al., 2006), this positive feedback is an important aspect for the explanation of the invigoration of the pyro-convection due to fire heating.

### 4.3 Fire release of moisture

In contrast to the sensible heat, the release of latent heat by the fire was found to be of rather low significance for the evolution of the Chisholm pyroCb. The 3-D structure of the plume obtained for noH<sub>2</sub>O, the simulation without any moisture release from the fire, is similar to that obtained for REF (Fig. 3a, d). The differences in  $IB$ , maximum and mean vertical updraft speed are also rather small (Table 3). The total hydrometeor mass for noH<sub>2</sub>O only decreased by 8% compared to REF. This is consistent with the result from Trentmann et al. (2006), where we reported that the fire moisture only accounts for less than 5–10% of the pyro-cloud's water budget, whereas most of the humidity and condensed water within the cloud stems from entrained environmental air. The low contribution of the fire moisture to cloud water and convection dynamics found here does not support the hypothesis from Potter (2005), who stated that it constituted a major portion of the cloud water and significantly influenced convection.

Considering the vertical aerosol mass distribution, we found that the outflow level  $z_{\text{out}}$  of the pyro-cloud and the maximum penetration height  $z_{\text{max}}$  are shifted by only 0.2 and 0.3 km towards lower altitudes for noH<sub>2</sub>O compared to REF (Fig. 4a). Due to the lack of latent heat released from the fire, however, the aerosol distribution as a function of potential temperature (Fig. 4b) exhibits significantly lower aerosol mass at potential temperatures above the peak outflow level. Consequently, the total aerosol mass above 332 K is  $4.3 \times 10^5$  kg for noH<sub>2</sub>O, i.e., 35% lower than for REF.

### 4.4 Sensitivity to CCN emissions

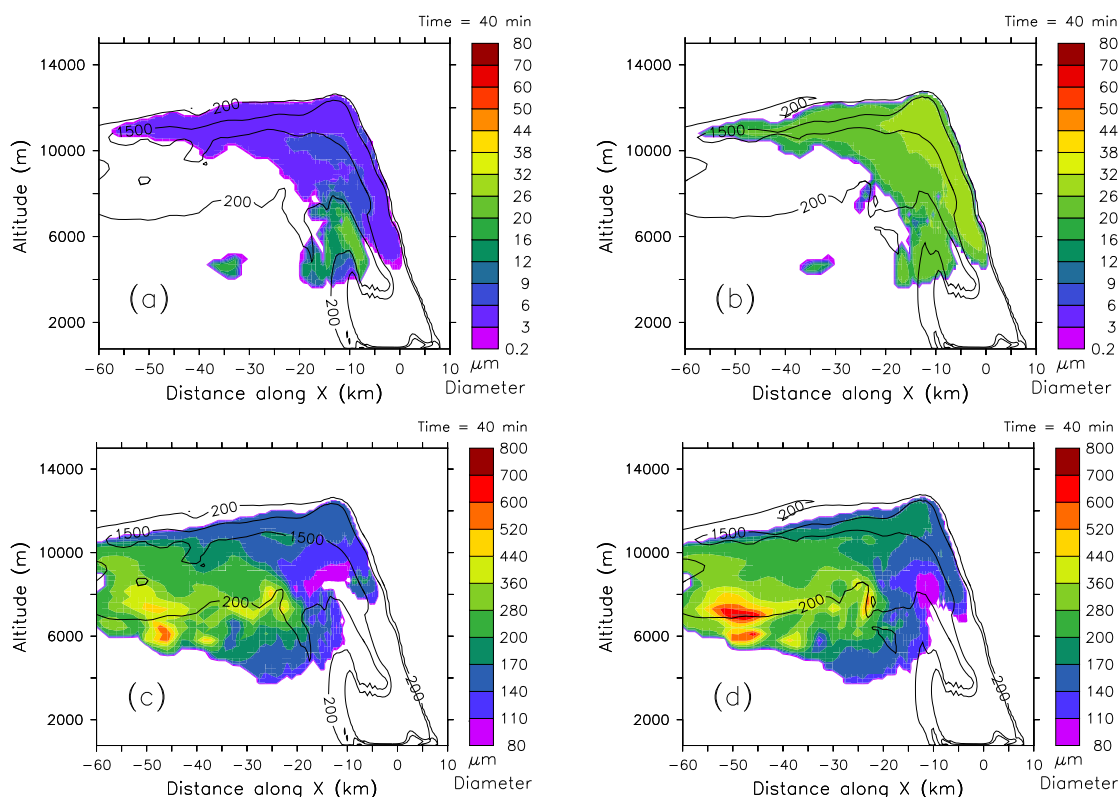
For the loCCN simulation, the sensitivity study assuming that the fire aerosol particles are inactive as CCN, we found rather small effects of the aerosol burden on the dynamics. Our results suggest that the vertical development of the Chisholm pyroCb would have been even slightly more vigorous without the fire aerosol. As depicted in Fig. 3e, the 3-D structure of the smoke plume is very similar to the one obtained for REF, albeit with a slightly higher overshoot and somewhat increased potential temperatures in the warm core region. The vertical aerosol mass distribution is also almost equal to the result for REF, but features a maximum penetration height  $z_{\text{max}}$  that is about 100 m higher than that of REF (Fig. 4a). Again, the differences between loCCN and REF are more pronounced in the distribution of aerosol mass as a function of potential temperature. As shown in Fig. 4b, there is significantly more aerosol mass in the distribution's upper tail at high potential temperatures. We found an aerosol mass of  $8.9 \times 10^5$  kg injected above the 332 K tropopause level for loCCN, substantially more than the  $7.1 \times 10^5$  kg found for REF.

The other parameters describing the dynamic evolution of the pyroCb also show that the omission of aerosol effects

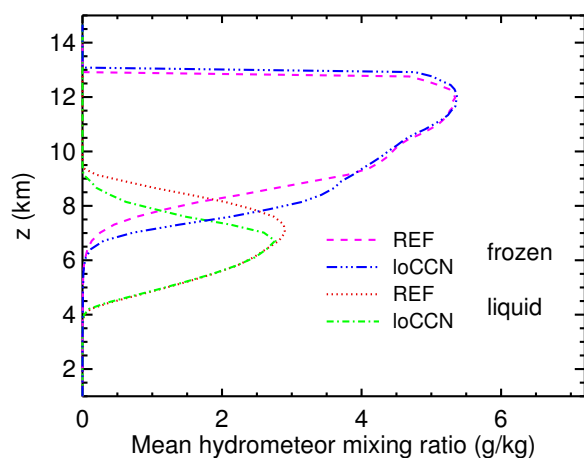
results in marginally stronger updraft dynamics. Both the mean updraft velocity  $\bar{w}$  and the maximum updraft  $w_{\text{max}}$  are slightly larger than in REF (Table 3). Also,  $IB$  obtained for loCCN is  $2130 \text{ J kg}^{-1}$ , about  $40 \text{ J kg}^{-1}$  more than in REF.

In contrast to the dynamics, the cloud microphysics is strongly impacted by the fire aerosol. As expected, the size of the hydrometeors in the reference study is much smaller than in loCCN (Fig. 6). The hydrometeors of the small classes (cloud droplets and ice crystals) are most abundant in the updraft region above the fire and the upper part of the anvil. For REF their volume mean diameters (VMD) are smaller than  $10 \mu\text{m}$  throughout this region, with the exception of cloud areas outside of the smoke plume or regions greatly diluted with ambient air masses (Fig. 6a). For droplets of this size, autoconversion, i.e., formation of larger drops as a result of collision and coalescence among small droplets, is inefficient, hence warm rain formation is strongly suppressed. For loCCN, on the other hand, the VMD of the cloud droplets and ice crystals are  $20\text{--}30 \mu\text{m}$  (Fig. 6b), a size where coagulation of droplets becomes active (Pruppacher and Klett, 1997). For the large hydrometeors, however, the difference between REF and loCCN is somewhat less pronounced. This size class is dominated by graupel throughout the anvil. For loCCN, the VMD of graupel at the top of the updraft region is almost  $200 \mu\text{m}$ . In the anvil, the graupel grows to a VMD of up to  $400\text{--}700 \mu\text{m}$ . For REF, the VMD of the graupel at the top of the updraft region is about  $150 \mu\text{m}$  (Fig. 6a). Its growth is somewhat delayed further downwind compared to loCCN with VMD of about  $300\text{--}500 \mu\text{m}$  in the lower part of the anvil, which is dominated by sedimenting graupel.

The model result of a slightly enhanced vertical development of the pyroCb in the case study without CCN emissions from the fire is in contrast with the mechanism for the invigoration of pyro-clouds in the Amazon proposed by Andreae et al. (2004). While Andreae et al. (2004) observed a delay of the precipitation formation beyond the freezing level due to the CCN effect from fire aerosol particles, the model results for the boreal pyroCb studied here show that there is no precipitation formation within the updraft region in either the reference case or the case without "CCN-pollution". At a mean vertical velocity of some  $17 \text{ m s}^{-1}$ , air parcels are traveling from cloud base at 4000 m to the outflow level at 11 000 m in about 7 min, which is insufficient for the development of precipitation even in clean conditions. Hydrometeors large enough to settle under gravity and precipitate are only developing outside the updraft, downwind of the fire and the updraft. This is consistent with the finding that, even though the Chisholm pyroCb was very large and strong, almost no precipitation was recorded at the ground near the fire location (ASRD, 2001). Also, in either case, all the cloud water reaches glaciation, hence the amount of latent heat of freezing released is equal for both simulations. For the small droplet sizes characteristic of polluted clouds, however, freezing is greatly delayed (Rosenfeld and Woodley, 2000). Immersion freezing can be described by the stochastic



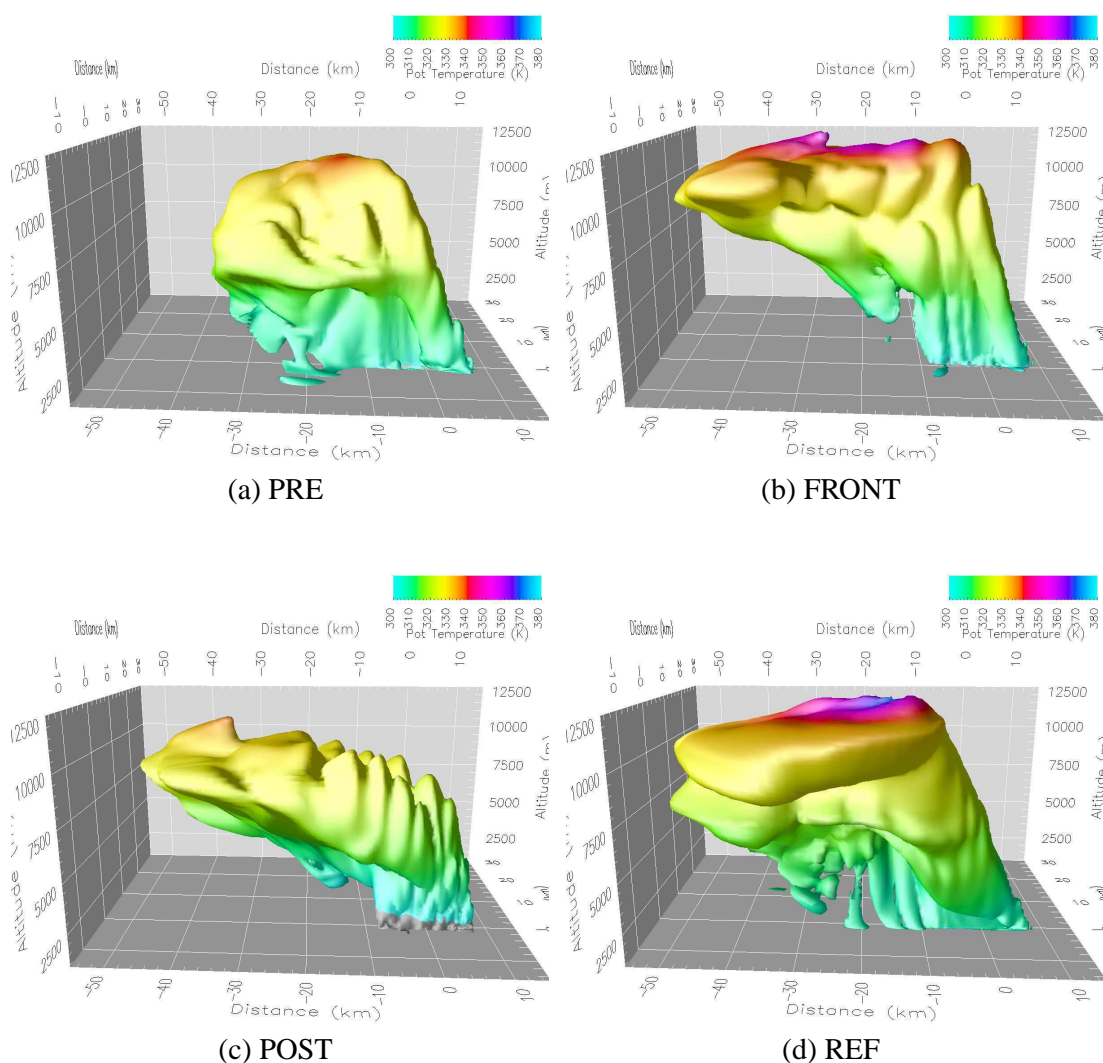
**Fig. 6.** Sensitivity of hydrometeor volume mean diameter (VMD) to CCN abundance. Diameters are depicted for (a) small size classes (cloud droplets and ice crystals) in REF, (b) small size classes in loCCN, (c) large size classes (rain drops and graupel) in REF, (d) large size class in loCCN. Contour lines give aerosol concentration in  $\mu\text{g m}^{-3}$ .



**Fig. 7.** Mean content of liquid and frozen hydrometeors for REF and loCCN.

hypothesis (Bigg, 1953). According to this theory, which is implemented in ATHAM, the freezing probability is proportional to the droplet mass. Consequently, the glaciation level for the smaller droplets in REF is much higher than for the bigger ones in loCCN. In fact, for REF most of the droplets do not freeze until they reach the level of homogeneous freezing of about  $-39^\circ\text{C}$  at approx. 9 km. The delayed release of the latent heat of freezing results in a slight decrease of convective strength. It must be noted, however, that there is great uncertainty about the ice nucleating abilities of smoke particles. The microphysical scheme currently implemented in ATHAM does not allow the explicit treatment of ice nuclei.

Figure 7 depicts the mean liquid and frozen hydrometeor contents for REF and loCCN, which were calculated according to Eq. (2), i.e., by using the upward aerosol flux as a weight function. It is found that freezing in REF is shifted by about 1 km to higher altitudes compared to loCCN. The lower freezing level of loCCN explains its slightly stronger vertical development: The earlier release of the latent heat of freezing and consequent increase of buoyancy results in higher updraft velocities and stronger overshooting. This is clearly evident from the vertical profiles of the mean buoyancy (Fig. 5a). The profiles for REF and loCCN are equal



**Fig. 8.**  $100 \mu\text{g m}^{-3}$  iso-surface of aerosol concentration for three simulations (a) PRE, (b) FRONT, (c) POST with different ECMWF background meteorology and (d) the baseline simulation REF after 30 min integration time.

throughout almost the entire troposphere. Between 7 and 9 km, however, air parcels in REF are approximately neutrally buoyant, whereas those in loCCN remain significantly positively buoyant. This matches exactly the altitude range of the delayed glaciation.

#### 4.5 Sensitivity to background meteorology

3-D visualizations of the aerosol plumes simulated for different meteorological conditions after a simulation time of 30 min are shown in Fig. 8. Because of stronger upper level winds of the ECMWF profiles, the plumes reached the boundaries of the model domain earlier than in the simulations with the radiosonde profiles. Therefore we had to limit the simulations to a 30 min integration time. The aerosol iso-surfaces for PRE, FRONT and POST, the three experiments

with ECMWF background profiles, are distinctly different from each other, and also differ from the one obtained for the reference simulation, for which the meteorological profiles from radiosonde observations were used.

For PRE, the experiment conducted with pre-frontal meteorological background conditions, the plume overshoots to levels close to the tropopause, however most of the aerosol remains in the mid-troposphere. The upper level winds are weaker than those in FRONT and POST, therefore the plume is more compact and less ambient air is entrained into the pyroCb. As shown in Fig. 9a and Table 4, the maximum height of smoke injection is at about 11 km, the vertical aerosol distribution for PRE has a maximum at 6.0 km altitude, where most of the outflow occurs.

This distribution can be understood in terms of the temperature and humidity profiles (Fig. 2a, Sect. 3.2). Due to

the warm potential temperatures in the boundary layer, the air masses of the portion of the smoke plume situated below cloud base are highly buoyant (Fig. 10a). Compared to the more moist conditions in FRONT and POST, however, the dry ambient air in PRE results in a higher cloud base and less latent heat released (Fig. 10b). The total hydrometeor mass in the pyroCb simulated for PRE is  $2.5 \times 10^9$  kg, compared to  $6.2 \times 10^9$  kg for FRONT. Also, background mid and upper tropospheric temperatures are substantially warmer. Consequently, air parcels in the pyroCb already become strongly negatively buoyant at about 6 km altitude. Air parcels overshooting this level therefore tend to sink back, giving rise to the observed peak in the aerosol distribution at this altitude. No aerosol is transported beyond potential temperatures of about 335 K, consequently the amount injected above the tropopause level is very small compared to that in FRONT (Fig. 10b, Table 4).

In the POST case, the aerosol plume only penetrates to  $z_{\max}=9.7$  km. Due to strong upper level winds, the plume is quickly advected to northwesterly directions and the maximum altitude is reached far downwind of the fire location. The air in the boundary layer is colder and more stably stratified than in PRE and FRONT (Fig. 9b), therefore the air masses in the plume are significantly less buoyant in the lowermost 4 km of the troposphere. Above approx. 6 km, the air parcels in the smoke plume become negatively buoyant, resulting in an outflow level at  $z_{\text{out}}=6.6$  km altitude. Due to the high humidity in the boundary layer (about  $9 \text{ g kg}^{-1}$ ) and the colder temperatures ( $15^\circ\text{C}$  at ground level), the pyroCb's cloud base is at 3.5 km, lower than for PRE and FRONT. The latent heat release results in a temperature lapse rate within the plume that is only slightly larger than the ambient lapse rate. Consequently, the plume air parcels are almost neutrally buoyant between 5 km and 9 km (Fig. 10a). Along with the strong wind shear, this explains that the aerosol mass is almost evenly distributed in this altitude range (Fig. 9a). There is no significant amount of aerosol above 330 K (Fig. 9b). The aerosol mass injected into the stratosphere is therefore very small (Table 4). Due to the warm and moist air masses in the boundary layer (Fig. 2b), the profile used in FRONT is strongly convectively unstable. The air parcels in the updraft region of the pyroCb therefore remain positively buoyant up to a level of about 10 km (Fig. 10a). Between approximately 7 and 8 km the buoyancy is reduced to almost zero, due to the delayed glaciation induced by the aerosol effect on microphysics described in Sect. 4.4. The pyroCb significantly overshoots into the tropopause inversion and reaches a maximum penetration height of  $z_{\max}=11.8$  km. The aerosol distribution as a function of potential temperature features a maximum at 330 K.  $3.5 \times 10^5$  kg of aerosol mass is injected above the 332 K tropopause, slightly more than in REF.

Even though FRONT and REF are similar in terms of vertical aerosol distribution, the total masses of condensed hydrometeors and stratospheric aerosol injection, as well as the 3-D shape of the plumes are significantly different (Fig. 8).

In REF the anvil spreads into a round, umbrella-like shape, while the anvil obtained for FRONT is advected much faster into the downwind direction because of a much more pronounced jet in the UT/LS region in this simulation. The cloud top structure obtained for REF more closely resembles observations from RADAR and satellite borne radiometers and should therefore be considered the best approximation of the real world situation.

The integrated buoyancy  $IB$  is rather large for all background profiles used. It is largely dominated by the contribution from the fire heating at low levels, where the smoky air parcels are least diluted. The difference in  $IB$  between the various numerical experiments correlates well with the mean vertical velocities. For FRONT,  $IB$  is highest at  $2290 \text{ J kg}^{-1}$ , and  $\bar{w}=17.2 \text{ m s}^{-1}$ . For PRE and POST,  $IB$  is somewhat lower with  $1970 \text{ J kg}^{-1}$  and  $1860 \text{ J kg}^{-1}$ , respectively, and  $\bar{w}$  is reduced to  $16.8 \text{ m s}^{-1}$  and  $15.3 \text{ m s}^{-1}$ , respectively (Table 4).

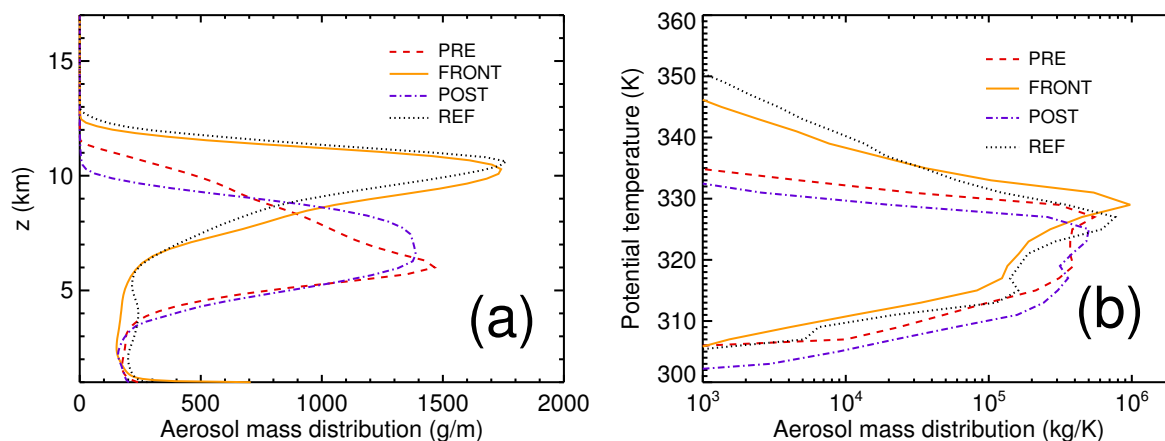
## 5 Summary and conclusions

We have presented numerical experiments studying the sensitivity of deep-convective transport of smoke from the Chisholm wildfire into the UT/LS to fire emissions and background meteorology. From our results we conclude that the evolution of the pyroCb convection and the transport to the UT/LS is dominated by the heat release from the fire and the background meteorology. The release of water vapor and aerosol particles were found to be of much lower significance.

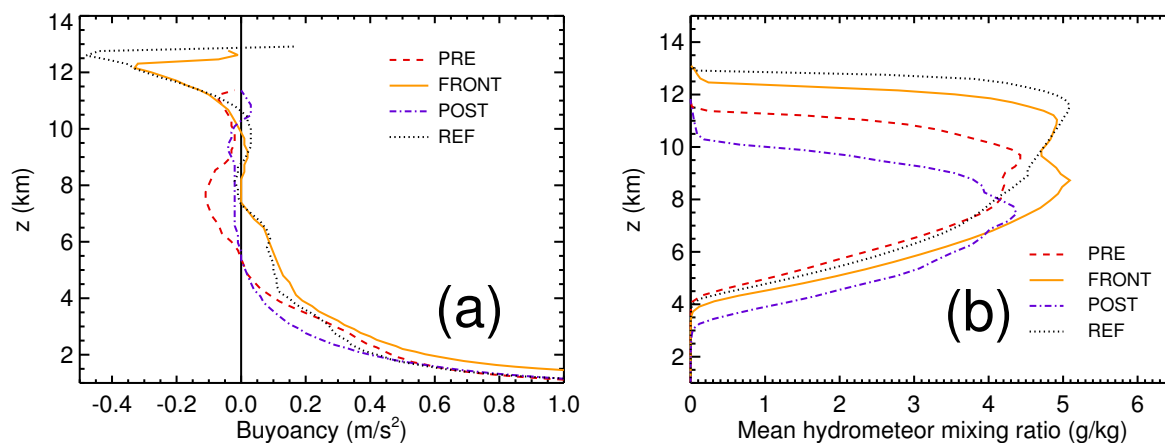
The finding that sensible heat release is the most important parameter influencing the Chisholm pyroCb convection is consistent with other studies (Penner et al., 1986; Lavoué et al., 2000), and should apply similarly to other cases of pyro-convection. Air parcels receiving greater input of heat from the fire ascend to higher altitudes, thereby condensing and freezing more of the available water and releasing additional latent heat, thus giving rise to a positive feedback. The strength of this feedback strongly depends on the meteorological conditions, such as the background temperature and moisture profiles.

As discussed in Trentmann et al. (2006), there is significant uncertainty about the partitioning of the combustion energy between sensible heat available for convection and energy that is lost radiatively. According to our simulations, the structure, altitude and penetration height observed during the peak activity of the Chisholm pyroCb can only be reproduced if the radiative loss is assumed to be small compared to the heat available for convection. Consequently, the radiative loss is likely to be smaller than the values of 30–60% obtained from laboratory and field studies of small fires (McCarter and Broido, 1965; Packham, 1969). Possibly, a major portion of the radiation becomes intercepted by the pyroCb itself, which is rather intransparent in the thermal





**Fig. 9.** Vertical distribution of aerosol mass (a) as a function of altitude and (b) as a function of potential temperature after 30 min integration time.



**Fig. 10.** Vertical profiles of (a) mean buoyancy  $\bar{b}$  and (b) mean hydrometeor content in the pyroCb's updraft region.

IR. It is also conceivable that there is a scale effect involved: the larger the fire, the larger the volume of air-mass getting entrained into the convection and the higher the ratio of fire radiation absorbed within that region. Radiative energy absorbed on small spatial scales results in sensible heating, consequently reducing the radiative loss.

The low sensitivity of the pyro-convection dynamics to the release of fire moisture is in contrast with the results of Potter (2005), who postulated, based on theoretical considerations and observations, that the fire moisture could account for a large portion of the liquid water content and strongly contribute to the updraft dynamics for many pyro-clouds. Certainly, the relative contribution of the fire moisture to the cloud liquid water depends strongly on the environmental humidity, entrainment and fuel moisture. Its impact on convection dynamics is determined by the ratio of latent to sensible heat released by the fire. This ratio is constrained by reasonable ranges of fuel moisture and radiative losses. In a com-

ment to Potter (2005), Luderer et al. (2006)<sup>1</sup> show based on the combustion equation that the assumptions used in Potter (2005) are inconsistent with the relative amounts of combustion heat and released moisture. Hence, for pyro-convection the role of fuel moisture is generally less important than that of sensible heat.

According to our model experiments, the updraft dynamics of the Chisholm pyroCb is only weakly affected by CCN effects on microphysics. While previous studies reported stronger convection with increasing CCN pollution (Andreae et al., 2004; Koren et al., 2005; Wang, 2005), our findings are opposite: The updraft dynamics in the reference experiment is slightly weaker than without CCN inputs from the fire. In Andreae et al. (2004) and Koren et al. (2005),

<sup>1</sup>Luderer, G., Trentmann, J., and Andreae, M. O.: A new look at the role of fire-released moisture on the dynamics of pyro-convection, *Int. J. Wildland Fire*, in preparation, 2006.



the invigoration of deep convection with increasing aerosol abundance is explained by a delay in precipitation formation and consequent suppression of downdrafts and warm rain. In this scenario, convection reaches higher and is more likely to reach the freezing level, thereby releasing additional latent heat. Because of the lack of precipitation formation within the updraft region for both the reference and the loCCN simulations, there are no invigorating effects of CCN on dynamics for the special case of mid-latitude pyro-convection studied here. The weak negative feedback can be explained by the delay in the freezing of the small cloud droplets in the polluted case, resulting in later release of the latent heat of freezing and decreased buoyancy.

Two-moment microphysics schemes such as the one used in this study are limited in their ability to simulate the development of precipitation-sized hydrometeors. The width of the hydrometeor size distribution is prescribed, therefore the broadening of the droplet spectrum through collision and coalescence is not reproduced. As a consequence, the simulated precipitation formation might be underestimated. We had to limit ourselves to this approach due to computational constraints. There is also substantial uncertainty about the ice nucleation ability of smoke particles and their effect on the freezing in the cloud. Efforts to implement a more complex spectral microphysical scheme (Khain et al., 2000) for further investigations are under way.

From sensitivity experiments with different background profiles we inferred that meteorological effects are of major importance for the convection dynamics. Due to the large contribution of latent heat release from entrained moisture to the total convection energy and the significant entrainment at intermediate levels (Trentmann et al., 2006), the convection is strongly influenced by the humidity in the low and mid-troposphere. Whereas initialization with a frontal profile resulted in substantial stratospheric smoke injection, the vertical development was much weaker for the pre-frontal and post-frontal profiles. This finding is in good agreement with the severe intensification of the pyro-convection upon the passage of a cold front that was observed for the Chisholm pyroCb (Fromm and Servranckx, 2003; Rosenfeld et al., 2006) as well as other pyroCbs (Fromm et al., 2005).

The recently discovered phenomenon of biomass smoke injection into the lower stratosphere by severe pyro-convection might have substantial impact on atmospheric chemistry and climate. For the case of the Chisholm pyroCb, we were able to reproduce the stratospheric smoke injection. We identified fire heating and background meteorology as the most important contributing factors. Assessing the effects of pyro-convection on a global scale is challenging. It requires not only accurate knowledge about the frequency of pyroCB events but also about the altitude and potential temperature level to which biomass smoke is transported. For this purpose, and the development of parameterizations, additional studies of other pyroCb events with a variety of atmospheric conditions and fire activities are required.

**Acknowledgements.** We would like to thank M. Fromm, A. Khain, B. Potter, D. Rosenfeld, R. Servranckx, M. Simmel and H. Wernli for stimulating discussions. Valuable comments on the manuscript from two anonymous reviewers are also highly appreciated. G. Luderer was supported by an International Max Planck Research School fellowship. J. Trentmann would like to thank the Alexander von Humboldt foundation for support through a Feodor-Lynen fellowship. Part of this work was funded by the German Ministry for Education and Research (BMBF) under grant 07 ATF 46 (EFEU) and by the Max Planck Society.

Edited by: A. Stohl

## References

- Andreae, M. O. and Merlet, P.: Emission of trace gases and aerosols from biomass burning, *Global Biogeochem. Cy.*, 15, 955–966, 2001.
- Andreae, M. O., Rosenfeld, D., Artaxo, P., Costa, A. A., Frank, G. P., Longo, K. M., and Silva-Dias, M. A. F.: Smoking rain clouds over the Amazon, *Science*, 303, 1337–1342, 2004.
- ASRD: Final Documentation Report – Chisholm Fire (LWF-063), Forest Protection Division, ISBN 0-7785-1841-8, Tech. rep., Alberta Sustainable Resource Development, 2001.
- Bigg, E. K.: The formation of atmospheric ice crystals by the freezing of droplets, *Q. J. R. Meteorol. Soc.*, 79, 510–519, 1953.
- Byram, G. M.: Combustion of forest fuels, in: *Forest Fire Control and Use*, edited by: Davis, K. P., McGraw-Hill, New York, 90–123, 1959.
- Cook, J. and Highwood, E.: Climate response to tropospheric absorbing aerosol in an intermediate general-circulation model, *Q. J. R. Meteorol. Soc.*, 130, 175–191, 2004.
- Damoah, R., Spichtinger, N., Servranckx, R., Fromm, M., Eloranta, E. W., Razenkov, I. A., James, P., Shulski, M., Forster, C., and Stohl, A.: A case study of pyro-convection using transport model and remote sensing data, *Atmos. Chem. Phys.*, 6, 173–185, 2006, <http://www.atmos-chem-phys.net/6/173/2006/>.
- Emanuel, K. A.: *Atmospheric Convection*, Oxford University Press, New York, 1994.
- Fromm, M., Alfred, J., Hoppel, K., Hornstein, J., Bevilacqua, R., Shettle, E., Servranckx, R., Li, Z., and Stocks, B.: Observations of boreal forest fire smoke in the stratosphere by POAM III, SAGE II, and lidar in 1998, *Geophys. Res. Lett.*, 27, 1407–1410, 2000.
- Fromm, M., Bevilacqua, R., Stocks, B., and Servranckx, R.: New directions: Eruptive transport to the stratosphere: Add fire-convection to volcanoes, *Atmos. Environ.*, 38, 163–165, 2004.
- Fromm, M., Bevilacqua, R., Servranckx, R., Rosen, J., Thayer, J., Herman, J., and Larko, D.: Pyro-cumulonimbus injection of smoke into the stratosphere: Observations and impact of a super blowup in northwestern Canada on 3–4 August 1998, *J. Geophys. Res.*, 110, D08205, doi:10.1029/2004JD005350, 2005.
- Fromm, M. D. and Servranckx, R.: Transport of forest fire smoke above the tropopause by supercell convection, *Geophys. Res. Lett.*, 30, 1542, doi:10.1029/2002GL016820, 2003.
- Graf, H.-F.: The Complex Interactions of Aerosols and Clouds, *Science*, 303, 1309–1311, 2004.
- Graf, H.-F., Herzog, M., Oberhuber, J. M., and Textor, C.: The effect of environmental conditions on volcanic plume rise, *J. Geo-*

- phys. Res., 104, 24 309–24 320, 1999.
- Herzog, M., Graf, H.-F., Textor, C., and Oberhuber, J. M.: The effect of phase changes of water on the development of volcanic plumes, *J. Volcanol. Geotherm. Res.*, 87, 55–74, 1998.
- Herzog, M., Oberhuber, J. M., and Graf, H.-F.: A prognostic turbulence scheme for the nonhydrostatic plume model ATHAM, *J. Atmos. Sci.*, 60, 2783–2796, 2003.
- Hobbs, P. V. and Locatelli, J. D.: Ice Nuclei from a Natural Forest Fire, *J. Appl. Meteorol.*, 8, 833–834, 1969.
- Houze, R. A.: *Cloud Dynamics*, Academic Press, San Diego, 1993.
- Jost, H.-J., Drdla, K., Stohl, A., Pfister, L., Loewenstein, M., Lopez, J. P., Hudson, P. K., Murphy, D. M., Mahoney, D. J., Cziczo, D. J., Fromm, M., Bui, T. P., Dean-Day, J., Gerbig, C., Mahoney, M. J., Richard, E. C., Spichtinger, N., Pittman, J. V., Weinstock, E. M., Wilson, J. C., and Xueref, I.: In-situ observation of mid-latitude forest fire plumes deep in the stratosphere, *Geophys. Res. Lett.*, 31, L11101, doi:10.1029/2003GL019253, 2004.
- Khain, A., Ovchinnikov, M., Pinsky, M., Pokrovsky, A., and Krugliak, H.: Notes on the state-of-the-art numerical modeling of cloud microphysics, *Atmos. Res.*, 55, 159–224, 2000.
- Koren, I., Kaufman, Y. J., Rosenfeld, D., Remer, L. A., and Rudich, Y.: Aerosol invigoration and restructuring of Atlantic convective clouds, *Geophys. Res. Lett.*, 32, L14828, doi:10.1029/22005GL023187, 2005.
- Lavoué, D., Liousse, C., Cachier, H., Stocks, B. J., and Goldammer, J. G.: Modeling of carbonaceous particles emitted by boreal and temperate wildfires at northern latitudes, *J. Geophys. Res.*, 105, 26 871–26 890, 2000.
- Lohmann, U. and Feichter, J.: Global indirect aerosol effects: A review, *Atmos. Chem. Phys.*, 5, 715–737, 2005, <http://www.atmos-chem-phys.net/5/715/2005/>.
- McCarter, R. J. and Broido, A.: Radiative and convective energy from wood crib fires, *Pyrodynamics*, 2, 65–85, 1965.
- Mullendore, G. L., Durran, D. R., and Holton, J. R.: Cross-tropopause tracer transport in midlatitude convection, *J. Geophys. Res.*, 110, D06113, doi:10.1029/2004JD005059, 2005.
- Oberhuber, J. M., Herzog, M., Graf, H.-F., and Schwanke, K.: Volcanic plume simulation on large scales, *J. Volcanol. Geotherm. Res.*, 87, 29–53, 1998.
- Packham, D. R.: Heat transfer above a small ground fire, *Aust. For. Res.*, 5, 19–24, 1969.
- Penner, J. E., Haselman, Jr., L. C., and Edwards, L. L.: Smoke-Plume Distribution above Large-Scale Fires: Implications for Simulations of “Nuclear Winter”, *J. Climate and Appl. Meteorol.*, 25, 1434–1444, 1986.
- Potter, B. E.: The role of released moisture in the atmospheric dynamics associated with wildland fires, *Int. J. Wildland Fire*, 14, 77–84, 2005.
- Pruppacher, H. R. and Klett, J. D.: *Microphysics of Clouds and Precipitation*, Kluwer Academic Publishers, 1997.
- Reid, J. S., Koppmann, R., Eck, T. F., and Eleuterio, D. P.: A review of biomass burning emissions part II: intensive physical properties of biomass burning particles, *Atmos. Chem. Phys.*, 5, 799–825, 2005, <http://www.atmos-chem-phys.net/5/799/2005/>.
- Robock, A.: Volcanic Eruptions and Climate, *Rev. Geophys.*, 38, 191–219, 2000.
- Rosenfeld, D.: Suppression of rain and snow by urban and industrial air pollution, *Sci.*, 287, 1793–1796, 2000.
- Rosenfeld, D., Fromm, M., Trentmann, J., Luderer, G., Andreae, M. O., and Servranckx, R.: The Chisholm firestorm: observed microstructure, precipitation and lightning activity of a pyro-Cb, *Atmos. Chem. Phys. Discuss.*, 6, 9877–9906, 2006, <http://www.atmos-chem-phys-discuss.net/6/9877/2006/>.
- Rosenfeld, D. and Woodley, W. L.: Deep convective clouds with sustained supercooled liquid water down to  $-37.5^{\circ}\text{C}$ , *Nature*, 405, 440–442, 2000.
- Simmel, M. and Wurzler, S.: Condensation and activation in sectional cloud microphysical models, *Atmos. Res.*, 80, 218–236, 2006.
- Small, R. D. and Heikes, K. E.: Early cloud formation by large area fires, *J. Appl. Meteorol.*, 27, 654–663, 1988.
- Textor, C., Graf, H. F., Herzog, M., Oberhuber, J. M., Rose, W. I., and Ernst, G. G. J.: Volcanic particle aggregation in explosive eruption columns. Part I: Parameterization of the microphysics of hydrometeors and ash, *J. Volcanol. Geotherm. Res.*, 150, 359–377, 2006a.
- Textor, C., Graf, H. F., Herzog, M., Oberhuber, J. M., Rose, W. I., and Ernst, G. G. J.: Volcanic particle aggregation in explosive eruption columns. Part II: Numerical experiments, *J. Volcanol. Geotherm. Res.*, 150, 378–394, 2006b.
- Trentmann, J., Luderer, G., Winterrath, T., Fromm, M., Servranckx, R., Textor, C., Herzog, M., and Andreae, M. O.: Modeling of biomass smoke injection into the lower stratosphere by a large forest fire (Part I): Reference study, *Atmos. Chem. Phys.*, 6, 5247–5260, 2006, <http://www.atmos-chem-phys.net/6/5247/2006/>.
- Waibel, A. E., Fischer, H., Wienhold, F. G., Siegmund, P. C., Lee, B., Stroem, J., Lelieveld, J., and Crutzen, P. J.: Highly elevated carbon monoxide concentrations in the upper troposphere and lowermost stratosphere at northern midlatitudes during the STREAM II summer campaign in 1994, *Chemosphere – Global Change Sci.*, 1, 233–248, 1999.
- Wang, C.: A modeling study of the response of tropical deep convection to the increase of cloud condensation nuclei concentration: 1. Dynamics and microphysics, *J. Geophys. Res.*, 110, doi:10.1029/2004JD005720, 2005.
- Wang, P. K.: Moisture plumes above thunderstorm anvils and their contributions cross-tropopause transport of water vapor in midlatitudes, *J. Geophys. Res.*, 108, 4194, doi:10.1029/2002JD002581, 2003.