



**HAL**  
open science

## Mixing processes and exchanges in the tropical and the subtropical UT/LS

R. James, B. Legras

► **To cite this version:**

R. James, B. Legras. Mixing processes and exchanges in the tropical and the subtropical UT/LS. Atmospheric Chemistry and Physics Discussions, 2008, 8 (3), pp.10627-10664. hal-00328330

**HAL Id: hal-00328330**

**<https://hal.science/hal-00328330>**

Submitted on 18 Jun 2008

**HAL** is a multi-disciplinary open access archive for the deposit and dissemination of scientific research documents, whether they are published or not. The documents may come from teaching and research institutions in France or abroad, or from public or private research centers.

L'archive ouverte pluridisciplinaire **HAL**, est destinée au dépôt et à la diffusion de documents scientifiques de niveau recherche, publiés ou non, émanant des établissements d'enseignement et de recherche français ou étrangers, des laboratoires publics ou privés.

**Mixing processes  
and exchanges in the  
tropical and the  
subtropical UT/LS**

R. James and B. Legras

# Mixing processes and exchanges in the tropical and the subtropical UT/LS

**R. James and B. Legras**

Laboratoire de Météorologie Dynamique UMR 8539, Paris, France

Received: 10 April 2008 – Accepted: 18 April 2008 – Published: 4 June 2008

Correspondence to: R. James (james@lmd.ens.fr)

Published by Copernicus Publications on behalf of the European Geosciences Union.

Title Page

Abstract

Introduction

Conclusions

References

Tables

Figures

⏪

⏩

◀

▶

Back

Close

Full Screen / Esc

Printer-friendly Version

Interactive Discussion

## Abstract

Both in situ measurements and satellite observations indicate evidence of mixing in the upper troposphere (UT) and the lower-stratosphere (LS). In this study, the measurements performed during the Pre-AVE and Costa-Rica AVE campaigns are analysed with diffusive back-trajectories to assess mixing properties in the tropical and the subtropical UT/LS. A description of cross-tropopause pathways and mixing time scales is provided.

In the subtropics, Troposphere-Stratosphere mixing processes are found to differ in the vicinity of the tropopause and at higher altitudes. Below 350 K, the mixing line observed during Pre-AVE is shown to result from fast and local cross-tropopause irreversible exchange, involving two initially distant air masses with distinct chemical compositions. For measurements located above 350 K, mixing of the tropospheric air in the subtropical stratosphere occurs over a period of a month, the origins of the tropospheric source being localised in the tropical UT and the tropical boundary layer.

In the tropics, quantitative reconstructions of CO and O<sub>3</sub> profiles above 360 K are obtained for one month back-trajectories calculations, pointing out that long term mixing is essential to determine the chemical composition in the tropical ascent. In particular, the existence of two-way meridional irreversible exchanges between 360 and 450 K is found to export tropical air in the subtropical stratosphere and to entrain old stratospheric air in the tropical ascent. Calculations of the Lagrangian mean age of air is shown to be in qualitative agreement with the CO<sub>2</sub> observations and diabatic calculations.

## 1 Introduction

One of the most intriguing features of the atmospheric flow is the existence of the tropopause. As defined from WMO, the tropopause is often seen as a roof vertically separating the well mixed troposphere from the stratosphere, where vertical motion

ACPD

8, 10627–10664, 2008

## Mixing processes and exchanges in the tropical and the subtropical UT/LS

R. James and B. Legras

Title Page

Abstract

Introduction

Conclusions

References

Tables

Figures

⏪

⏩

◀

▶

Back

Close

Full Screen / Esc

Printer-friendly Version

Interactive Discussion



is inhibited by the stratification. The tropopause is hence seen as a *mixing barrier* across which tracer profiles are expected to exhibit a jump in the vertical gradient. This is indeed the case for ozone and carbon monoxide profiles, and has led Pan et al. (2004) to the definition of a “chemopause”, generally found slightly below the thermal tropopause.

However, a complementary approach emphasizing the role of horizontal transport between the troposphere and the stratosphere can also be proposed. Most of the vertical motion in the extratropics, especially during winter, is along sloping isentropic surfaces that transport and stir air between the boundary layer and the upper troposphere in a matter of a few days or less in case of intense frontogenesis. Dynamical constraints imply that isentropic surfaces cross the tropopause especially in the vicinity of upper level jets, which are *transport barriers* (Chen, 1995; Haynes and Shuckburgh, 2000b; Haynes et al., 2001). The tropopause is hence seen here as a vertical wall damping horizontal exchanges through the barrier effect of the jets.

The two views concerning the tropopause reconcile by separating the stratosphere as a reservoir of potential vorticity, mainly maintained as stratification by radiative processes, from the troposphere where stratification and PV are destroyed by boundary layer processes and slantwise convection.

It is now widely admitted, from tracer measurements collected during airborne campaigns (Hoor et al., 2002; Pan et al., 2004) that the transition between the troposphere and the stratosphere in the extratropics is not brutal but occurs over a mixing layer of a couple of kilometers, or 25 K, above the tropopause. Numerous studies have documented the exchanges between the lowermost extratropical stratosphere and the upper troposphere. As a matter of fact, Lagrangian analyses based on back-trajectories with a uniform initial distribution have shown that transport over a few days successfully retrieve the main geographical locations of the exchanges (Wernli and Bourqui, 2002). This short time period is sufficient to assess, at least grossly, the sign and the magnitude of the mean mass exchange: upward below the subtropical jet and in the tropics and downward in the extratropics. However, the amount of mass exchanged is

## Mixing processes and exchanges in the tropical and the subtropical UT/LS

R. James and B. Legras

Title Page

Abstract

Introduction

Conclusions

References

Tables

Figures



Back

Close

Full Screen / Esc

Printer-friendly Version

Interactive Discussion

still a matter of discussion. Among other constraints, limited resolution makes difficult to distinguish transient, reversible, exchanges from irreversible exchanges (Wernli and Bourqui, 2002). Irreversible exchanges are responsible of the mixing of tropospheric and stratospheric air at molecular scale.

5 In the tropics the average motion is upward at the lapse-rate tropopause, and mixing of tropospheric air within the stratosphere is not limited to a shallow layer but shows a trace in the tape recorder signal deep in the stratosphere (Mote et al., 1996; Neu and Plumb, 1999) for the annual cycle. However, small-scale and fast fluctuations exhibit less penetration than at the subtropical latitudes (Patmore and Toumi, 2006).

10 As described by the *leaky tropical pipe* model in Neu and Plumb (1999), the distribution of tracers in the tropical troposphere is usually considered to result from the combined effect of mean ascending motion, vertical diffusion and limited exchanges with the extratropics (Vaughn et al., 1997). There is evidence of more intense meridional exchanges in the lower stratosphere below 450 K than above (Vaughn, 1996; Haynes and Shuckburgh, 2000a) and that a strong seasonal modulation affects both hemispheres. A part of the tropical air newly entered in the stratosphere eventually mixes within the extratropics over a period estimated from 1 to 4 month (Volk et al., 1996; Appenzeller et al., 1996; Rosenlof and McCormick, 1997; Andrews et al., 2001; Grewe et al., 2002). However, the vertical extension of this meridional exchange, how far it penetrates above the subtropical jet barrier (Haynes and Shuckburgh, 2000b) and its seasonal variations are still poorly documented from observations and models.

25 Tracer-tracer relations have often been used to assess mixing properties in the atmosphere (Plumb, 2007). The CO/O<sub>3</sub> relation is particularly useful at the tropopause because CO, which has sources at the surface, reaches mixing ratio of 100 ppmv or more in the troposphere and relaxes to about 12 ppbv within a couple of months in the stratosphere while O<sub>3</sub> is mainly of stratospheric origin and is short lived (a few days) in the troposphere. Hence one expects (Fischer et al., 2000; Hoor et al., 2002; Pan et al., 2004) to see a L-shape distribution in the CO/O<sub>3</sub> for a profile spanning the upper troposphere and the lowermost stratosphere upon which are superimposed mixing lines

---

## Mixing processes and exchanges in the tropical and the subtropical UT/LS

R. James and B. Legras

---

Title Page

Abstract

Introduction

Conclusions

References

Tables

Figures

⏪

⏩

◀

▶

Back

Close

Full Screen / Esc

Printer-friendly Version

Interactive Discussion

due to injection of tropospheric air within the stratosphere.

Although this hypothesis is supported by a number of observations, it has been seldom checked to be consistent with atmospheric dynamics. As a quantitative assessment, the advection of passive tracer in the CLaMS model has pointed out that the CO/O<sub>3</sub> relationships in the vicinity of the extratropical tropopause could effectively be explained from TS mixing (Pan et al., 2006). However, previous studies have limited the integrations of trajectories to relatively short time-scale that did not allow to investigate TS transport and mixing processes in the tropics or above 360 K at higher latitudes.

This work investigates mixing properties across the tropopause using long Lagrangian integration times up to 35 days and a representation of turbulent dispersion by Feynman-Kac method. The model is applied to the analysis of in situ measurements in the tropical and subtropical UT/LS. Section 2 presents the Pre-AVE and CR-AVE dataset used in this work. Section 3 presents the numerical methods. Section 4 shows the results for the case of a mixing line in the subtropics. Section 5 discusses mixing processes above 350 K in the subtropics and Sect. 6 discusses mixing time-scale in the tropics. Section 7 offers further discussion and conclusions.

## 2 In-situ measurements

### 2.1 Campaigns and instruments

The Pre-AVE and the Costa-Rica AVE campaigns took place respectively in winter 2004 and winter 2006 over the Gulf of Mexico and Costa-Rica (Fig. 1). They are part of the six AURA Validation Experiments (AVE) planed by the NASA to validate the AURA satellite. With 12 tropical flights on board of the WB-57, the Pre-AVE and the Costa-Rica AVE campaigns provide the largest dataset collected by an instrumented stratospheric plane in the tropics providing an homogeneous dataset for CO and O<sub>3</sub>. Spanning the range of altitudes between 350 K and 450 K in potential temperature, the flight tracks encompass the lapse-rate tropopause and permit a statistical assessment

## Mixing processes and exchanges in the tropical and the subtropical UT/LS

R. James and B. Legras

Title Page

Abstract

Introduction

Conclusions

References

Tables

Figures

⏪

⏩

◀

▶

Back

Close

Full Screen / Esc

Printer-friendly Version

Interactive Discussion

of the cross-tropopause processes in this region. A number of additional subtropical flights during the same campaigns allow direct comparisons of mixing properties between tropics and extratropics.

Ozone was measured at 1 Hz frequency by the NOAA Dual-Beam UV-absorption ozone photometer (Proffitt et al., 1989) with a relative precision of 5 ppbv (average uncertainty 5%). The carbon monoxide has been measured at 0.5 Hz (with 8 s calibration gaps 10 or 20 s) by the ARGUS DIAL instrument (Loewenstein et al., 2002; Lopez et al., 2006), providing a precision of near 2 ppbv (3%). The carbon dioxide has been measured with the non dispersive absorption CO<sub>2</sub> analyser, which is calibrated in flight, at 1 Hz with precision of 50 to 100 ppbv (Daube et al., 2002). Temperature, pressure and position are recorded at 1 Hz, providing an horizontal resolution of near 250 m and a vertical resolution during ascent and descent of near 10 m.

In order to distinguish the tropical and the extratropical signatures, we have selected two well-separated subsets among the flights of the WB-57 (Table 1). The tropical set contains twelve flights performed equatorward of 10° N. The subtropical set contains two flights performed poleward of 30° N. Flights performed at intermediate latitudes have been discarded from our analysis. The two meteorological situations associated to the selected flights in the subtropical ensemble exhibit properties (tropopause altitude, tropopause folds, ...) which are characteristic of the extratropics. The presence of such dynamical features allow a direct comparison with the SPURT dataset in the extratropics (Hoor et al., 2004).

## 2.2 Tracer-tracer relationship and mixing

Figure 2 shows the distributions of CO and O<sub>3</sub> as a function of altitude and the CO/O<sub>3</sub> diagram for the two sets of tropical and subtropical flights which are superimposed for comparison.

### Mixing processes and exchanges in the tropical and the subtropical UT/LS

R. James and B. Legras

Title Page

Abstract

Introduction

Conclusions

References

Tables

Figures

⏪

⏩

◀

▶

Back

Close

Full Screen / Esc

Printer-friendly Version

Interactive Discussion

## 2.2.1 Sub-tropics

In the subtropics, a CO/O<sub>3</sub> relationship connecting pure tropospheric values of CO (>100 ppbv) to stratospheric values of ozone (>200 ppbv) is captured by one of the two subtropical flights. Observed between  $\theta=320$  and 350 K, the linearity of the distribution is highly suggestive of a mixing line, and will be referred in the sequel as the dynamical tropopause relationship. Such kind of CO/O<sub>3</sub> relationships have been first identified in (Hoor et al., 2002), and then frequently observed in the extratropics. Idealised tracer experiment in CLaMS model have made clear that those particular distributions of tracer are determined by cross-tropopause mixing (Pan et al., 2006).

We would like here to emphasize that a true mixing line requires the mixing event to occur between two air masses initially distant in chemical composition. This processes differs from the case where a column of air spanning the tropopause, and sampling both tropospheric and stratospheric branches of the CO/O<sub>3</sub> diagram, is mixed. In the first case, the mixing result from the irreversible exchange between two identified sources, the chemical composition of each parcel being determined by the proportion of air issued from one of the sources at the end of the mixing event. All the mixtures lie on the same mixing line, and an unique relationship can be retrieved along any transect across the mixed region. In the second case, mixing is allowed between air parcels with composition distributed in the CO-O<sub>3</sub> plane. Unless this initial distribution is a line, the mixing line is not unique and appears as an artifact of sampling along the flight track.

In the subtropics and extratropics, two mechanisms can perform mixing between two air masses of distant initial composition: the ascent along the warm conveyor belt (Wernli and Bourqui, 2002), and the detrainment of deep convective clouds above the tropopause (Mullendore et al., 2005). We show in Sect. 4 that the first mechanism is indeed responsible of the observed mixing line.

Due to the limited amount of data, the tropospheric branch in Fig. 2 reduces to a few points below 360 K in the subtropics. At higher levels, the stratospheric parcels

## Mixing processes and exchanges in the tropical and the subtropical UT/LS

R. James and B. Legras

Title Page

Abstract

Introduction

Conclusions

References

Tables

Figures

⏪

⏩

◀

▶

Back

Close

Full Screen / Esc

Printer-friendly Version

Interactive Discussion



---

**Mixing processes  
and exchanges in the  
tropical and the  
subtropical UT/LS**R. James and B. Legras

---

Title Page

Abstract

Introduction

Conclusions

References

Tables

Figures

⏪

⏩

◀

▶

Back

Close

Full Screen / Esc

Printer-friendly Version

Interactive Discussion

split apparently in two subsets, the smaller one being superimposed onto the tropical branch while most of them are distributed along an other branch with a steeper slope reaching higher  $O_3$  values. The existence of a separate branch overlaying the tropical branch is an indication that some of the air in the subtropics has intruded recently from the tropics. This interpretation is supported by Hoor et al. (2004, 2005) who have suggested that meridional mixing of upper tropospheric tropical air in the lowermost extratropical stratosphere could be responsible of the slope discontinuity in the  $CO/O_3$  relationship that they found at  $\Delta\theta=25$  K above the tropopause. Here we find also, that the junction between the dynamical tropopause relationship and the main branch of the subtropical stratospheric relationship is located at 350 K, around 25 K above the tropopause. The fact that the subtropical stratospheric relationship extends below this meeting point at 350 K is an additional indication of in-mixing with tropospheric tropical air above the layer of the dynamical tropopause relationship.

In the stratosphere, mixing processes are produced by intermittent poaches of turbulence combined with horizontal stirring and fluctuations in the heating rate, inducing fluctuations of cross-isentropic motion. Estimations of the large-scale vertical diffusions fall within a range of  $0.1\text{--}0.5\text{ m}^2\text{ s}^{-1}$  at mid-latitudes, which correspond to much slower mixing processes than in the vicinity of the tropopause. We will show in Sect. 5 how the mixing properties of the subtropical stratosphere can be related to the tropical tropospheric impact in this region.

### 2.2.2 Tropics

In the tropics, it is easy to distinguish a tropospheric branch with low values of  $O_3$  and CO ranging from 40 ppbv to 120 ppbv below 380 K and, a stratospheric branch with  $O_3$  above 100 ppbv and CO below 60 ppbv above. The absence of mixing lines in the 12 flights of the Pre-AVE and CR-AVE dataset and the striking compactness of the stratospheric branch emphasize that transport and mixing processes occur over relatively long time-scales.

### 3 Methods

#### 3.1 Reconstruction

As argued before, CO-O<sub>3</sub> relationship suggests that the lower tropical and extratropical stratosphere separates into several layers and mixing regimes according to the tropospheric influence.

In order to determine how tracer distribution is controlled by advection and turbulent diffusion in the vicinity of the tropopause, we investigate how Lagrangian diffusive reconstructions are able to explain the observed tracer relationship.

The deterministic part of the Lagrangian reconstruction method used in this study is based on the reverse integration of trajectories with TRACZILLA, a modified version of FLEXPART (Stohl et al., 2005) which uses winds from the European Centre of Medium range Weather Forecast (ECMWF) projected on a latitude-longitude grid with 0.5° resolution in the horizontal and on 60 hybrid levels in the vertical (91 in 2006 for CR-AVE), with 3-h temporal resolution obtained by combining analysis available every 6 h with short time forecasts at intermediate times. Trajectories are initialized along the flight track at 1 Hz resolution and then integrated backwards over 40 days. We interpolate the ECMWF potential vorticity and potential temperature along the trajectory in order to localize our parcel with respect to the tropopause.

In order to take into account that each air parcel is actually a mixture of particles from various origin we split each parcel into  $M$  particles released from the same point. These particles are submitted to an additional random noise in the vertical that represent the turbulent diffusion  $D$  due to small-scale motion missing in the ECMWF winds (Legras et al., 2005). We choose this procedure instead of an arbitrary initial separation because it is consistent with the underlying physics and also because the applied diffusion can be estimated from the comparison of small-scale observed tracer fluctuations and reconstructions (Legras et al., 2005; Pissu and Legras, 2008). As shown below, the value of the diffusion coefficient is chosen in order to fit the observations but the results are found to be weakly sensitive to the precise values of this parameter.

## Mixing processes and exchanges in the tropical and the subtropical UT/LS

R. James and B. Legras

Title Page

Abstract

Introduction

Conclusions

References

Tables

Figures

◀

▶

◀

▶

Back

Close

Full Screen / Esc

Printer-friendly Version

Interactive Discussion



---

**Mixing processes  
and exchanges in the  
tropical and the  
subtropical UT/LS**

---

R. James and B. Legras

---

[Title Page](#)[Abstract](#)[Introduction](#)[Conclusions](#)[References](#)[Tables](#)[Figures](#)[⏪](#)[⏩](#)[◀](#)[▶](#)[Back](#)[Close](#)[Full Screen / Esc](#)[Printer-friendly Version](#)[Interactive Discussion](#)

Notice that large-scale motion is here explicitly taken into account and that the added diffusion is meant to represent the small-scale processes and differs from the large-scale diffusion mentioned in Sect. 2.2. Notice also that the added diffusion governs dispersion of the cloud of points associated with each parcel only during the first days of the integration, after which dispersion is mainly due to the wind strain.

The reconstructed value of the tracer is obtained by averaging the values of the tracer at the locations reached by the particles at the end of the reverse integration. Potential vorticity is provided by the ECMWF analysis while chemical tracers are provided by the three-dimensional chemistry-transport model REPROBUS (REactive Processes Ruling the Ozone BUdget in the Stratosphere) which uses a comprehensive treatment of gas-phase and heterogeneous chemical processes in the stratosphere (Lefèvre et al., 1994, 1998). Long lived species, including ozone, are transported by a semi-Lagrangian scheme forced by the ECMWF wind analysis. The model is integrated on 42 hybrid pressure levels that extend from the ground up to 0.1 hPa.

When diffusion  $D$  is set to zero or is very small, the origin of each parcel is found to be localized even after several weeks and is very sensitive to the initial location. As a result, the fluctuations of a reconstructed tracer grow indefinitely with time when  $D=0$  or saturate to very high values when  $D$  is too small. In previous work (Legras et al., 2005),  $D$  was adjusted in order to fit the observed fluctuations. Here we need also to take into account the errors of the analyzed wind field used in the reconstruction which are usually larger in the tropics than at mid and high latitudes, in particular regarding the divergent circulation.

Consequently, we retain only the parcels for which the ozone reconstruction provides a value which deviates from the observed value by less than 30% and we adjust  $D$  in order to maximize the percentage of retained parcels. Table 2 shows that this minimum is reached for  $D \approx 1 \text{ m}^2 \text{ s}^{-1}$  in the dynamical tropopause layer, retaining 60% of the parcels, while it is reached for  $D \approx 0.1 \text{ m}^2 \text{ s}^{-1}$  in the subtropics above 350 K and in the tropics, retaining respectively 80% and 65% of the parcels. Integration time is 9 days in the dynamical tropopause and 1 month for the other cases as explained below.

The dynamical tropopause value is consistent with the results of [Pisso and Legras \(2008\)](#). The lower value in the upper subtropics and tropics is similar to that found in the extratropical stratosphere by [Legras et al. \(2005\)](#) and in agreement with the values estimated by [Mote et al. \(1996\)](#) in the tropical ascent.

### 5 3.2 Stratospheric air proportion

As the cloud of particles merging into a given parcel evolves backward in time, its distribution among the stratosphere and the troposphere allows to determine in which proportion stratospheric and tropospheric air mix within the parcel.

Potential temperature and potential vorticity are interpolated along the backward trajectories in order to determine the location with respect to the tropopause. Particles with a potential vorticity exceeding  $4 \cdot 10^{-6} \text{ K kg}^{-1} \text{ m}^2 \text{ s}^{-1}$  or with a potential temperature above 380 K are labeled as stratospheric while the other ones are considered as tropospheric.

The *Stratospheric Air Proportion* (SAP) is then defined for each parcel and for a given reconstruction time as the proportion of backward trajectories among  $M$  which are located in the stratosphere at that time.

### 3.3 Age of air

The mean age of air ([Vaugh and Hall, 2002](#)) is defined as the mean duration since a parcel entered the stratosphere. This age can be estimated from our calculations by averaging this duration, for each parcel, over the particles which have crossed. A generalized age is defined by choosing a reference surface which is not the tropopause, like an isentropic surface within the TTL.

The mean age of air can also be estimated, following [Park et al. \(2007\)](#), using  $\text{CO}_2$  as an age marker. During January-February,  $\text{CO}_2$  exhibits a global trend of 28–30 ppbv per day. Since the accuracy of the Harvard instrument on board the WB-57 is 50–100 ppbv ([Daube et al., 2002](#)), the age of air can be estimated with an accuracy of

## Mixing processes and exchanges in the tropical and the subtropical UT/LS

R. James and B. Legras

Title Page

Abstract

Introduction

Conclusions

References

Tables

Figures

◀

▶

◀

▶

Back

Close

Full Screen / Esc

Printer-friendly Version

Interactive Discussion



2–3 days. The calculation is as follows. First, we reduce all the CO<sub>2</sub> profiles of the CRAVE campaign to a single date chosen on 19 January 2006 by shifting all data by a flat 30 ppbv per day tendency. This generates the *reduced* CO<sub>2</sub>. Then we calculate the age at a given altitude from the difference between the measured CO<sub>2</sub> and the average concentration at a reference level chosen as an isentropic surface (360, 370 or 380 K), converted into an age dividing by the same flat tendency as aforementioned. This procedure is essentially identical to that used in [Park et al. \(2007\)](#).

#### 4 Mixing time-scale in the subtropical dynamical tropopause

In Fig. 3, we compare observed CO and O<sub>3</sub> for the dynamical tropopause layer defined in Sect. 2.2 with the SAP calculated from backward trajectories and several definitions of the tropopause. In the left two panels, where the SAP is calculated after an integration of 2 days, there is no visible relation between tracer value and SAP. In the right two panels where back-trajectories are integrated over 9 days, a linear relation emerges for both CO and O<sub>3</sub> mixing ratios.

This result provides a stringent confirmation that the dynamical tropopause relationship is correctly interpreted as a mixing line between a tropospheric source and a stratospheric source. Indeed, if chemistry was driving CO and O<sub>3</sub> over the considered time-scale, there would be no reason to obtain a relation with a quantity that depends purely on transport and mixing. Note that, this result does not depend on the precise PV value chosen to define the tropopause, as shown by the different grey ensembles in Fig. 3.

However, the linear relation between SAP and the tracers is only obtained after a minimum integration time which is required for the cloud of particles merging into a single parcel to sample the stratospheric and tropospheric origins. This time can be seen as a mixing time required to mix stratospheric and tropospheric air into the parcel. It does not contain any scale dependence on resolution, unlike the convergence time of the reconstructions in [Legras et al. \(2005\)](#) and is associated, as we shall see shortly,

### Mixing processes and exchanges in the tropical and the subtropical UT/LS

R. James and B. Legras

Title Page

Abstract

Introduction

Conclusions

References

Tables

Figures

◀

▶

◀

▶

Back

Close

Full Screen / Esc

Printer-friendly Version

Interactive Discussion



to a fast meso-scale event.

In order to investigate further the tropospheric and stratospheric sources, Fig. 4 shows the probability density function (pdf) of the reconstructed locations of particles that contribute to the dynamical tropopause relationship after 9 days of backward integration. The distribution exhibits a striking bimodality with two clusters that separate both in altitude and latitude, one being located within the troposphere, near 25° N and 330 K, equatorward to the jet, and the other one in the extratropical stratosphere, near 40° N with a distribution of potential temperature from 320 K to 360 K that matches that of the mixing line in Fig. 2.

Interestingly, the sources are separated by a distance of 1500 km, which is on the order of a Rossby radius at those latitudes. The existence of a link between the two clusters in Fig. 4 around the isentrop 325 K and the fairly small latitudinal extend of the origins of stratospheric parcel suggest that the transport that brought the tropospheric and stratospheric parcels together has been first accomplished by quasi-isentropic motion followed by cross-isentropic mixing. As a matter of fact, the flight track crossed a region of wind shear on the north side of a jet streak as shown in the upper panel of Fig. 5. Such situations are often associated with upper level fronts. Indeed, the vertical cross-section along a direction approximating the flight track, shown in the lower panel of Fig. 5, exhibits the typical pattern of a folded tropopause, embedding the portion of the flight track associated with the mixing line, within the layer 320–350 K. The relatively flat shape of the isentropic surfaces with respect to the slope of the PV distribution within the front (realized mostly as shear) is an indication that the flight occurred during the decay of the front, after flattening of the isentropic surfaces by the cross-frontal circulation and shear induced mixing beneath the jet. This scenario has been checked to be consistent with the upstream evolution of the front over the previous four days (not shown). As the time scale of the front is about one week, this is also consistent with the duration required to establish the link between SAP and the mixing line as discuss above. This is in agreement with previous results on troposphere-stratosphere exchanges beneath the subtropical jet (Shapiro, 1980; Chen, 1995).

**Mixing processes and exchanges in the tropical and the subtropical UT/LS**

R. James and B. Legras

Title Page

Abstract

Introduction

Conclusions

References

Tables

Figures



Back

Close

Full Screen / Esc

Printer-friendly Version

Interactive Discussion

## 5 TS mixing above the dynamical tropopause

In this section, we investigate the TS mixing above the dynamical tropopause in a range of  $\theta$  values larger than 350 K. We expect mixing times larger than those associated with mid-latitude synoptic perturbation due to the limited impact of the tropospheric intrusion at this altitude. Figure 6 compares the mixing ratios of CO and O<sub>3</sub> as a function of the SAP after 9 and 35 days. After 9 days, both species exhibit almost constant compositions for SAP lower than 50% whereas, for large SAP, the mean mixing ratio is not an invertible function of SAP and the dispersion for a given SAP is large.

The non existence of a clear relation between SAP and tracer mixing ratios indicates that the particles have not yet been sorted into well defined tropospheric and stratospheric ensembles over 9 days. We infer from this result that although some tropospheric air may have been stirred with stratospheric air over the range of one week by reversible exchanges, this duration is insufficient to perform mixing down to the molecular scale and impacts on the air composition. In contrast, for trajectories integrated over a period of one month, compact quasi-linear relations are retrieved between SAP and tracers for the whole range of tracer values. This bijective relation allows a quantitative estimate of the mixing ratio of each measured species from the proportion of the air parcel which was in the troposphere one month before. In agreement with in situ measurements studies from the SPURT dataset (Hoor et al., 2004, 2005), this result indicates that the chemical composition of the subtropical parcels above 350 K results from long-term mixing processes across the tropopause. This cannot be confused with an effect of neglected chemistry since the same relationship is observed for CO and O<sub>3</sub>.

Figure 7 shows the distribution of the subtropical particles after an integration of 35 days. Here, it is clear that the main source is found in the TTL northward of the equator. Below 360 K, the sharp vertical gradient north to 15° N indicates that meridional exchanges are inhibited at the altitude of the jet core in agreement with the current understanding of the barrier effect of winter subtropical jet (Haynes and

### Mixing processes and exchanges in the tropical and the subtropical UT/LS

R. James and B. Legras

Title Page

Abstract

Introduction

Conclusions

References

Tables

Figures

⏪

⏩

◀

▶

Back

Close

Full Screen / Esc

Printer-friendly Version

Interactive Discussion



---

**Mixing processes  
and exchanges in the  
tropical and the  
subtropical UT/LS**

---

R. James and B. Legras

---

Title Page

Abstract

Introduction

Conclusions

References

Tables

Figures

⏪

⏩

◀

▶

Back

Close

Full Screen / Esc

Printer-friendly Version

Interactive Discussion

Shuckburgh, 2000b). Closer to the equator, the distribution broadens in the troposphere and extends to the ground. This feature emphasizes the contribution of tropical convection to the chemical composition of the extratropical “overworld” suggested by Desler and Scherwood (2004). It shows that, even in northern winter, a part of the subtropical parcels initialised above 360 K are found to originate from the tropical boundary layer after being lifted up to about 350 K by convective transport. Interestingly, no tropospheric sources are found at higher latitudes than 30° N. This discards the hypothesis of a subtropical or extratropical tropospheric source to explain the trace gas composition observed in this region above 350 K. Hence, the fast and local mixing events close to the tropopause appear as limited to a shallow layer, and are not able to significantly impact the overlaying levels, even by the diffusive upward propagation over long time scale. This analysis confirms that above the tropopause layer the composition of the lower stratosphere is controlled by long term mixing between the tropical tropospheric air advected from the TTL with stratospheric air from the overworld. In the continuity of in situ observation of Hoor et al. (2004) in the extratropics, the TTL is shown to act as a tropospheric reservoir for the lower stratosphere at higher latitude. The wide range of latitudes found for parcel origins within the TTL establishes the importance of the meridional exchanges for the subtropical lower stratosphere, a feature that significantly differs from the stronger role of atmospheric descent from the overworld at higher latitudes (Appenzeller et al., 1996).

## 6 Mixing time-scale at the tropical tropopause

### 6.1 Long term stratospheric mixing at the tropical tropopause

We now discuss the relation between SAP and tracers in the tropics in the layer between 340 and 450 K. Following the same approach as in Sect. 5, CO and O<sub>3</sub> are represented as a function of the SAP in Fig. 8.

Similarly to the distribution observed in Fig. 6, the tropical tracer measurements do



## Mixing processes and exchanges in the tropical and the subtropical UT/LS

R. James and B. Legras

not exhibit organised relations with the stratospheric air proportion issued from short time calculations. Indeed, for most values, the SAP does not distinguish CO or O<sub>3</sub> mixing ratios when an integration time of 9 days is used. For instance, a concentration of 50 ppbv in CO corresponds to SAP values ranging from a purely tropospheric to an almost purely stratospheric composition (90%), highlighting that the relation between the tracers and the SAP values is very weak for this time.

In the opposite, the back-trajectories retrieve quasi-linear and bijective relations with in situ tracer measurements when the SAP is calculated over 35 days. Here, the large dispersion of the CO concentrations found for the parcels close to a pure tropospheric proportion is an effect of the heterogeneity of tropospheric sources for CO. Indeed, a very weak dispersion is found in the identical range of SAP values when ozone measurements are considered.

However, it is important to assess whether the dispersion of points within the lower panels of Fig. 8 is due to the variability among the 11 flights or whether the dispersion occurs within each flight. This is equivalent to test the ability of SAP to reconstruct tracer transect during each flight. For each tracer  $\chi$ , the SAP is used to predict the value  $\chi(t)$  along the flight track as

$$\chi = (1 - \text{SAP}) * \chi^T + \text{SAP} * \chi^S \quad (1)$$

where  $\chi^T$  and  $\chi^S$  are respectively pure tropospheric and pure stratospheric values of the tracer, chosen as CO<sup>T</sup>=60 ppbv, CO<sup>S</sup>=35 ppbv, O<sub>3</sub><sup>T</sup>=50 ppbv and O<sub>3</sub><sup>S</sup>=200 ppbv corresponding to observed values at, respectively 360 K and 430 K. Figure 9 shows three selected flights from CR-AVE, demonstrating that the reconstructions are able to reproduce most of the variations observed along the flight track after 35 days but fails dramatically after only 9 days. An average mean standard error of 7% is found for the reconstructed CO profiles and 15% for O<sub>3</sub> profiles when 35-day back-trajectories are considered. This, with the fairly compact relations obtained for the mean distribution over 11 flights and two different winters strongly suggests that the distribution of long-lived tracers can be explained by the properties of transport as resolved by meteorological analysis and a simple representation of subgrid-scale effects as a diffusion.

Title Page

Abstract

Introduction

Conclusions

References

Tables

Figures

◀

▶

◀

▶

Back

Close

Full Screen / Esc

Printer-friendly Version

Interactive Discussion



## 6.2 Slow ascent in the tropics

In order to investigate the pathways followed by the cross-tropopause transport in the tropics, Fig. 10 shows the distribution of the tropical parcels after an integration of 35 days.

5 Interestingly, the observed pattern seems to indicate that both vertical and meridional mixing across the tropopause are efficient in the tropical UT/LS. The two cores of the distribution found around 360 K and 400 K, below and above the tropopause respectively, are associated with an initial bimodality in the flight levels. However, it is significant that this upper maximum does not expand in latitude over 35 days while the  
10 lower core extends to 20° N. The third core of the distribution found near the ground marks the role of convective transport from the boundary layer.

At extratropical latitudes, a large hemispheric asymmetry is found in the distribution of the particles. Poleward to 10° N, an important contribution of the winter subtropics is found between 380 K and 430 K whereas a strong meridional gradient at 10° S marks the isolation of the tropics from the Southern hemisphere above 380 K. In particular, the upward slope on the northern flank of the distribution in the TTL suggests an influence of the winter subtropical jet in the entrainment of subtropical air in tropics. In the northern hemisphere, isentropic exchanges poleward 30° N are not allowed below 360 K, while above 380 K subtropical air is transported from the winter hemisphere as far as 40° N into the tropics. This result is in agreement with the existence of a mixing layer above the subtropical jet that entrains subtropical air and dumps isentropic transport in the core of the jet (Konopka et al., 2007).

25 However, a much smaller proportion of particles originates from the subtropics at higher altitudes above 430 K. This inhibition of meridional exchanges in the tropical ascent is a clear signature of the tropical pipe. From Fig. 10, the isolation of the tropics is found for levels located at least a couple kilometers above the tropopause, and not directly above it. This result is in agreement with previous in-situ and model studies (Rosenlof and McCormick, 1997; Neu and Plumb, 1999). In the scope of this paper,

### Mixing processes and exchanges in the tropical and the subtropical UT/LS

R. James and B. Legras

Title Page

Abstract

Introduction

Conclusions

References

Tables

Figures



Back

Close

Full Screen / Esc

Printer-friendly Version

Interactive Discussion

the region located between the entry in the TTL and the bottom of the tropical pipe is seen as driven by mixing processes coupling the vertical ascent in the tropics to the entrainment of subtropical air by irreversible meridional exchanges between 380 K and 430 K. The air newly entered in the TTL is progressively mixed within the stratosphere, leading to the slow modification of the trace gas composition along the tropical ascent.

Hence, poleward transport of tropical air in the subtropical LS (Sect. 5) and equatorward transport of subtropical air in the tropical ascent are identified in the layer extending from the top of the winter subtropical jet to the isentrope 430 K. The existence of this two-way exchange layer is in agreement with the general understanding of the meridional transport in the region and offers a clarification of the structure of the exchanges between the the subtropical LS and the tropical UT/LS. Focusing on measurements performed during two boreal winters, the entrainment of stratospheric air in the tropical band is shown to exhibit a strong seasonal pattern, suggesting the existence of an annual cycle of the hemisphere involved.

### 6.3 Age of air

Figure 11a shows the mean vertical velocity of particles during their residence in the tropical band  $10^{\circ}\text{S}$ – $10^{\circ}\text{N}$  as a function of altitude. The value between 360 K and 370 K lay in the range  $1$  to  $2.5\text{ mm s}^{-1}$  which is consistent with the estimate of Park et al. (2007). However, above this level and up to 460 K, vertical velocities are smaller than  $1\text{ mm s}^{-1}$ . This result is also consistent with diabatic calculations of Randel et al. (2007) who have estimated velocity of  $0.6\text{ mm s}^{-1}$  at 17.5 km during winter, and shows that the vertical velocity is not homogeneous in the tropical band. Particularly, between 390 K and 400 K, a shallow layer exhibits negative velocities which might be due to the special sampling provided by the particles launched from Pre-AVE and CR-AVE flights but, nevertheless, shows that mean transport alone cannot carry tracer upward. The fluctuating component of vertical velocity, either explicit or parametrized as diffusion, appears hence as essential for upward tracer transport. Note that this vertical velocity minimum is located at an equivalent altitude of 19 km, where Randel et al. (2007) find a

## Mixing processes and exchanges in the tropical and the subtropical UT/LS

R. James and B. Legras

Title Page

Abstract

Introduction

Conclusions

References

Tables

Figures



Back

Close

Full Screen / Esc

Printer-friendly Version

Interactive Discussion



maximum in the amplitude of the annual cycle of CO and a very small residual vertical velocity.

Figure 11b shows the CO<sub>2</sub>-age as a function of potential temperature. This figure mirrors the distribution of reduced CO<sub>2</sub> in the vertical and exhibits a quasi-linear profile above 360 K in agreement with Park et al. (2007). These authors found that recent injections by convection explains the variability of CO<sub>2</sub> below 360 K while, above this level, mixing and slow ascent in the TTL generates a compact relation with the potential temperature. We found, however, that using 370 K instead of 360 K as a reference level provides a more compact relation, thus we use the isentrope 370 K in the following to determine the mean age of air. Note that horizontal segments that departs from the main branch are due to contrail sampling.

Figure 11c shows the distribution of the age of air from trajectory calculations as a function of reduced CO<sub>2</sub>. The age is truncated at 35 days by the length of the trajectories but nevertheless exhibits a linear relation over the range 5 to 30 days with a slope of 43 ppbv per day. This is slightly larger but consistent with the observed tendency of CO<sub>2</sub>.

The last panel of Fig. 11 shows the age of air determined from the trajectories as a function of the CO<sub>2</sub>-age. Although there is a significant dispersion, the mean relation is close to the median up to 25 days indicating a good agreement between the two estimates of the age of air. This indicates that the distribution of vertical motion determined from trajectory calculations is in agreement with CO<sub>2</sub> observations.

## 7 Conclusions

We have used a Lagrangian model of diffusive back-trajectories to quantify the impact of Troposphere-Sratosphere mixing in airborne tracer observations. This model has been applied to aircraft measurements in the tropics and the subtropics at different altitudes during the Pre-AVE and CR-AVE campaigns. The main result shown by the calculation of the spectrum of origins is that CO and O<sub>3</sub> mixing ratio can be successfully

### Mixing processes and exchanges in the tropical and the subtropical UT/LS

R. James and B. Legras

Title Page

Abstract

Introduction

Conclusions

References

Tables

Figures

⏪

⏩

◀

▶

Back

Close

Full Screen / Esc

Printer-friendly Version

Interactive Discussion

explained by the proportion of stratospheric and tropospheric air estimated from our model with analysed winds.

In the subtropics, we have analysed a mixing line observed below 350 K and shown that it resulted from cross-tropopause mixing generated by an active frontogenesis event on the time scale of one week. The description of this cross-tropopause pathway is in agreement with previous results on the characterization of irreversible TS exchange close to the subtropical tropopause (Wernli and Bourqui, 2002; Pan et al., 2006). In particular, back-trajectories have retrieved the tropospheric and the stratospheric sources involved in the mixing event, showing that the two initial air masses were meridionally separated by more than 1500 km and had two distinct chemical compositions. Such exchange processes are favored near the jet stream where isentropic surfaces intersect the tropopause, but are most certainly active locally along jet streaks at higher latitude, where similar tracer-tracer relationships are observed (Hoor et al., 2002; Pan et al., 2004).

Above 350 K, the localisation of the tropospheric source confirms that the transport of tropical air across the tropopause is the main pathway involved in the TS irreversible exchanges in the subtropics at this altitude. From the analysis of the stratospheric air proportion, we have determined a time-scale of one month for such cross-tropopause mixing. This is relatively shorter but agrees with the current results issued from in situ (Rosenlof and McCormick, 1997; Hoor et al., 2005) and model studies (Andrews et al., 2001). The overall description provided is consistent with the existence of a mixing layer above the subtropical jet as identified by Konopka et al. (2007).

In the tropics, below 360 K, the Lagrangian analysis retrieves a purely tropospheric origins of the measurements, which is consistent with the large CO observed variability and with the impact of the convection identified by Park et al. (2007). Above 360 K, the vertical distribution and individual profiles of CO and O<sub>3</sub> are determined within a range of 10% by slow mixing between tropospheric and stratospheric air over a period of a month. Indeed, the Lagrangian analysis has shown that the tropical tropospheric air newly entered in the stratosphere is mixed within the tropical ascent to achieve a fully

## Mixing processes and exchanges in the tropical and the subtropical UT/LS

R. James and B. Legras

Title Page

Abstract

Introduction

Conclusions

References

Tables

Figures

⏪

⏩

◀

▶

Back

Close

Full Screen / Esc

Printer-friendly Version

Interactive Discussion

stratospheric composition above 450 K. In particular, the large asymmetry observed in the distribution of the stratospheric parcels points to the role of the winter subtropical jet to generate a meridional exchange between 360 K and 450 K.

In their study, [Park et al. \(2007\)](#) conclude that the vertical profile of CO<sub>2</sub> is insensitive to diffusion. This conclusion is reached by fitting a purely advective law to a quasi-linear profile, excluding de facto any influence of diffusion. If, however, the vertical velocity is not left as a free parameter but is made consistent with mass conservation and heating rates, then an equally good fit to the observations can be obtained with some finite diffusion. Hence, our study, where the diffusion induced by fluctuations is shown to be essential in determining the vertical profiles of tracers is not contradicted by [Park et al. \(2007\)](#). There is, however, a source of uncertainty in using vertical velocities from operational analysis which are known to contain a significant amount of spurious noise ([Legras et al., 2005](#)). Further studies using recent reanalysis and heating rates instead of vertical velocities are required to clarify this issue.

## References

- Andrews, A. E., Boering, K. A., Wofsy, S. C., Daube, B. C., Jones, D. B., Alex, S., Loewenstein, M., Podolske, J. R., and Strahan, S. E.: Empirical age spectra for the lower tropical stratosphere from in situ observations of CO<sub>2</sub>: Quantitative evidence for a sub-tropical barrier to horizontal transport, *J. Geophys. Res.*, 106, 32 295–32 314, doi:10.1029/2001JD000465, 2001. [10630](#), [10646](#)
- Appenzeller, C., Holton, J. R., and Rosenlof, K. H.: Seasonal variation of mass transport across the tropopause, *J. Geophys. Res.*, 101, 15 071–15 078, doi:10.1029/96JD00821, 1996. [10630](#), [10641](#)
- Chen, P.: Isentropic cross-tropopause mass exchange in the extratropics, *J. Geophys. Res.*, 100, 16 661–16 674, doi:10.1029/95JD01264, 1995. [10629](#), [10639](#)
- Daube, B. C., J., Boering, K. A., Andrews, A. E., and Wofsy, S. C.: A High-Precision Fast-Response Airborne CO<sub>2</sub> Analyzer for In Situ Sampling from the Surface to the Middle Stratosphere, *J. Atmos. Ocean. Tech.*, 19, 1532–1543, doi:10.1175/1520-0426(2002)019(1532:AHPFRA)2.0.CO;2, 2002. [10632](#), [10637](#)

## Mixing processes and exchanges in the tropical and the subtropical UT/LS

R. James and B. Legras

Title Page

Abstract

Introduction

Conclusions

References

Tables

Figures



Back

Close

Full Screen / Esc

Printer-friendly Version

Interactive Discussion



**Mixing processes  
and exchanges in the  
tropical and the  
subtropical UT/LS**

R. James and B. Legras

Title Page

Abstract

Introduction

Conclusions

References

Tables

Figures

◀

▶

◀

▶

Back

Close

Full Screen / Esc

Printer-friendly Version

Interactive Discussion

- Desler, A. E. and Scherwood, S. C.: Effect of convection on the summertime extratropical lower stratosphere, *J. Geophys. Res.*, 109, D23301, doi:10.1029/2004JD005209, 2004. [10641](#)
- Fischer, H., Wienhold, F. G., Hoor, P., Bujok, O., Schiller, C., Siegmund, P., Ambaum, M., Scheeren, H. A., and Lelieveld, J.: Tracer correlations in the northern high latitude lowermost stratosphere: Influence of cross-tropopause mass exchange, *Geophys. Res. Lett.*, 27, 97–100, doi:10.1029/1999GL010879, 2000. [10630](#)
- Grewe, V., Reithmeier, C., and Shindell, D.: Dynamic-chemical coupling of the upper troposphere and lower stratosphere region, *Chemosphere*, 47, 851–861, doi:10.1016/S0045-6535(02)00038-3, 2002. [10630](#)
- Haynes, P. H. and Shuckburgh, E.: Effective diffusivity as a diagnostic of atmospheric transport. Part I: stratosphere, *J. Geophys. Res.*, 105, 22 777–22 794, doi:10.1029/2000JD900093, 2000a. [10630](#)
- Haynes, P. H. and Shuckburgh, E.: Effective diffusivity as a diagnostic of atmospheric transport. Part II: troposphere and lower stratosphere, *J. Geophys. Res.*, 105, 22 795–22 810, doi:10.1029/2000JD900092, 2000b. [10629](#), [10630](#), [10640](#)
- Haynes, P. H., Scinocca, J. F., and Greenslade, M. D.: Formation and maintenance of the extratropical tropopause by baroclinic eddies, *Geophys. Res. Lett.*, 28, 4179–4182, doi:10.1029/2001GL013485, 2001. [10629](#)
- Hoor, P., Fischer, H., Lange, L., Lelieveld, J., and Brunner, D.: Seasonal variations of a mixing layer in the lowermost stratosphere as identified by the CO-O<sub>3</sub> correlation from in situ measurements, *J. Geophys. Res.*, 107, 4044–4060, doi:10.1029/2000JD000289, 2002. [10629](#), [10630](#), [10633](#), [10646](#)
- Hoor, P., Gurk, C., Brunner, D., Hegglin, M. I., Wernli, H., and Fischer, H.: Seasonality and extent of extratropical TST derived from in-situ CO measurements during SPURT, *Atmos. Chem. Phys.*, 4, 1427–1442, 2004, <http://www.atmos-chem-phys.net/4/1427/2004/>. [10632](#), [10634](#), [10640](#), [10641](#)
- Hoor, P., Fischer, H., and Lelieveld, J.: Tropical and extratropical tropospheric air in the lowermost stratosphere over Europe: A CO-based budget, *Geophys. Res. Lett.*, 32, L13812, doi:10.1029/2005GL022495, 2005. [10634](#), [10640](#), [10646](#)
- Konopka, P., Günther, G., Müller, R., dos Santos, F. H. S., Schiller, C., Ravegnani, F., Ulanovsky, A., Schlager, H., Volk, C. M., Viciani, S., Pan, L. L., McKenna, D.-S., and Riese, M.: Contribution of mixing to upward transport across the tropical tropopause layer (TTL), *Atmos. Chem. Phys.*, 7, 3285–3308, 2007,



<http://www.atmos-chem-phys.net/7/3285/2007/>. 10643, 10646

Lefèvre, F., Brasseur, G. P., Folkins, I., Smith, A. K., and Simon, P.: Chemistry of the 1991–1992 stratospheric winter: Three-dimensional model simulations, *J. Geophys. Res.*, 99, 8183–8195, doi:10.1029/93JD03476, 1994. 10636

5 Lefèvre, F., Figarol, F., Carslaw, K. S., and Peter, T.: The 1997 Arctic ozone depletion quantified from three-dimensional model simulations, *Geophys. Res. Lett.*, 25, 2425–2428, doi:10.1029/98GL51812, 1998. 10636

Legras, B., Pisso, I., Berthet, G., and Lefèvre, F.: Variability of the Lagrangian turbulent diffusion in the lower stratosphere, *Atmos. Chem. Phys.*, 5, 1605–1622, 2005,

10 <http://www.atmos-chem-phys.net/5/1605/2005/>. 10635, 10636, 10637, 10638, 10647

Loewenstein, M., Jost, H.-J., Grose, J., Eilers, J., Lynch, D., Jensen, S., and Marmie, J.: Argus: A new instrument for the measurement of the stratospheric dynamical tracers, N<sub>2</sub>O and CH<sub>4</sub>, *Spectrochim. Acta A*, 58, 2329–2345, 2002. 10632

Lopez, J. P., Fridlind, A. M., Jost, H.-J., Loewenstein, M., Ackerman, A. S., Campos, T. L., Weinstock, E. M., Sayres, D. S., Smith, J. B., Pittman, J. V., Hallar, A. G., Avallone, L. M., Davis, S. M., and Herman, R. L.: CO signatures in subtropical convective clouds and anvils during CRYSTAL-FACE: An analysis of convective transport and entrainment using observations and a cloud-resolving model, *J. Geophys. Res.*, 111, D09305, doi:10.1029/2005JD006104, 2006. 10632

20 Mote, P. W., Rosenlof, K. H., M. McIntyre, M. E., Carr, E. S., Gille, J. C., Holton, J. R., Kinnersley, J. S., Pumphrey, H. C., Russell III, J. M., and Waters, J. W.: An atmospheric tape recorder: The imprint of tropical tropopause temperatures on stratospheric water vapor, *J. Geophys. Res.*, 101, 3989–4006, 1996. 10630, 10637

Mullendore, G. L., Durran, D. R., and Holton, J. R.: Cross-tropopause tracer transport in mid-latitude convection, *J. Geophys. Res.*, 110, D06113, doi:10.1029/2004JD0050590, 2005. 10633

Neu, J. L. and Plumb, R. A.: Age of air in a “leaky pipe” model of stratospheric transport, *J. Geophys. Res.*, 104, 19243–19255, doi:10.1029/1999JD900251, 1999. 10630, 10643

Pan, L. L., Randel, W. J., Gary, B. L., Mahoney, M. J., and Hints, E. J.: Definition and sharpness of the extratropical tropopause: A trace gas perspective, *J. Geophys. Res.*, 109, D23103, doi:10.1029/2004JD004982, 2004. 10629, 10630, 10646

30 Pan, L. L., Konopka, P., and Browell, E. V.: Observations and model simulations of mixing near the extratropical tropopause, *J. Geophys. Res.*, 111, D05106, doi:10.1029/2005JD006480,

**Mixing processes and exchanges in the tropical and the subtropical UT/LS**

R. James and B. Legras

Title Page

Abstract

Introduction

Conclusions

References

Tables

Figures

◀

▶

◀

▶

Back

Close

Full Screen / Esc

Printer-friendly Version

Interactive Discussion



**Mixing processes  
and exchanges in the  
tropical and the  
subtropical UT/LS**

R. James and B. Legras

Title Page

Abstract

Introduction

Conclusions

References

Tables

Figures

◀

▶

◀

▶

Back

Close

Full Screen / Esc

Printer-friendly Version

Interactive Discussion

2006. [10631](#), [10633](#), [10646](#)

Park, S., Jimenez, R., Daube, B. C., Pfister, L. T., Conway, T. J., Gottlieb, E. W., Chow, V. Y., Curran, D. J., Matross, D. M., Bright, A., Atlas, E. L., Bui, T. P., Gao, R.-S., Twohy, C. H., and Wofsy, S. C.: The CO<sub>2</sub> tracer clock for the Tropical Tropopause Layer, *Atmos. Chem. Phys.*, 7, 3989–4000, 2007,

<http://www.atmos-chem-phys.net/7/3989/2007/>. [10637](#), [10638](#), [10644](#), [10645](#), [10646](#), [10647](#)

Patmore, N. and Toumi, R.: An entropy-based measure of mixing at the tropopause, *Q. J. R. Meteorol. Soc.*, 132, 1949–1960, 2006. [10630](#)

Pisso, I. and Legras, B.: Turbulent vertical diffusivity in the sub-tropical stratosphere, *Atmos. Chem. Phys.*, 8, 697–707, 2008,

<http://www.atmos-chem-phys.net/8/697/2008/>. [10635](#), [10637](#)

Plumb, R. A.: Tracer-tracer relationships in the stratosphere, *Rev. Geophys.*, 45, RG4005, doi:10.1029/2005RG000179, 2007. [10630](#)

Proffitt, M. H., Kelly, K. K., Powell, J. A., Gary, B. L., Loewenstein, M., Podolske, J. R., Strahan, S. E., and Chan, K. R.: Evidence for diabatic cooling and poleward transport within and around the 1987 Antarctic ozone hole, *J. Geophys. Res.*, 94, 16 797–16 813, doi:10.1029/89JD00905, 1989. [10632](#)

Randel, W. J., Park, M., Wu, F., and Livesey, N.: A Large Annual Cycle in Ozone above the Tropical Tropopause Linked to the Brewer Dobson Circulation, *J. Atmos. Sci.*, 64, 4479–4488, doi:10.1175/2007JAS2409.1, 2007. [10644](#)

Rosenlof, K. H. and McCormick, M. P.: Hemispheric asymmetries in water vapor and inferences about transport in the lower stratosphere, *J. Geophys. Res.*, 102, 13 213–13 234, doi:10.1029/97JD00873, 1997. [10630](#), [10643](#), [10646](#)

Shapiro, M. A.: Turbulent mixing within tropopause folds as a mechanism for the exchange of chemical constituents between the troposphere and the stratosphere, *J. Atmos. Sci.*, 37, 994–1004, doi:10.1175/1520-0469(1980)037<0994:TMWTF>2.0.CO;2, 1980. [10639](#)

Stohl, A., Forster, C., Frank, A., and Wotawa, G.: Technical note: The Lagrangian particle dispersion model FLEXPART version 6.2, *Atmos. Chem. Phys.*, 6, 2461–2474, 2005, <http://www.atmos-chem-phys.net/6/2461/2005/>. [10635](#)

Volk, C. M., Elkins, J. W., Fahey, D. W., Salawitch, R. J., Dutton, G. S., Gilligan, J. M., Proffitt, M. H., Loewenstein, M., Podolske, J. R., Minschwaner, K., Margitan, J. J., and Chan, K. R.: Quantifying transport between the tropical and mid-latitude lower stratosphere, *Science*, 272, 1763–1768, 1996. [10630](#)

Waugh, D. W.: Seasonal variation of isentropic transport out of the tropical stratosphere, *J. Geophys. Res.*, 101, 4007–4023, doi:10.1029/95JD03160, 1996. [10630](#)

Waugh, D. W. and Hall, T. M.: Age of stratospheric air: theory, observations, and models, *Rev. Geophys.*, 40, doi:10.1029/2000RG000101, 2002. [10637](#)

5 Waugh, D. W., Plumb, R. A., Elkins, J. W., Fahey, D. W., Boering, K. A., Dutton, G. S., Volk, C. M., Keim, E., Gao, R.-S., Daube, B. C., Wofsy, S. C., Lowenstein, M., Podolske, J. R., Chan, K. R., Proffitt, M. H., Kelly, K. K., Newman, P. A., and Lait, L. R.: Mixing of polar air into middle latitudes as revealed by tracer-tracer scatter plots, *J. Geophys. Res.*, 102, 13 119–13 134, doi:10.1029/96JD03715, 1997. [10630](#)

10 Wernli, H. and Bourqui, M.: A Lagrangian 1-year climatology of (deep) cross-tropopause exchange in the extratropical Northern Hemisphere, *J. Geophys. Res.*, 107, 4021, doi:10.1029/2001JD000812, 2002. [10629](#), [10630](#), [10633](#), [10646](#)

**Mixing processes  
and exchanges in the  
tropical and the  
subtropical UT/LS**

R. James and B. Legras

Title Page

Abstract

Introduction

Conclusions

References

Tables

Figures

⏪

⏩

◀

▶

Back

Close

Full Screen / Esc

Printer-friendly Version

Interactive Discussion

**Mixing processes  
and exchanges in the  
tropical and the  
subtropical UT/LS**

R. James and B. Legras

[Title Page](#)[Abstract](#)[Introduction](#)[Conclusions](#)[References](#)[Tables](#)[Figures](#)[I◀](#)[▶I](#)[◀](#)[▶](#)[Back](#)[Close](#)[Full Screen / Esc](#)[Printer-friendly Version](#)[Interactive Discussion](#)**Table 1.** Table of the Pre-AVE and CR-AVE flights used for subtropical and tropical regions.

Sub-tropics	Tropics
19/01/04	
	27/01/04
	29/01/04
	30/01/04
09/01/06	
	19/01/06
	21/01/06
	22/01/06
	25/01/06
	27/01/06
	30/01/06
	02/02/06
	06/02/06
	07/02/06
	09/02/06

## Mixing processes and exchanges in the tropical and the subtropical UT/LS

R. James and B. Legras

**Table 2.** Percentage of retained parcels for different values of the diffusivity added to the advection scheme.

	$D \text{ (m}^2 \text{ s}^{-1}\text{)}$						
	0.01	0.05	0.1	0.5	1.	2.	5.
Tropics	60	64	67	44	20	–	–
Sub-Tropics	62	79	80	71	33	–	–
Dyn. trop.	–	–	52	57	60	57	52

Title Page

Abstract

Introduction

Conclusions

References

Tables

Figures

⏪

⏩

◀

▶

Back

Close

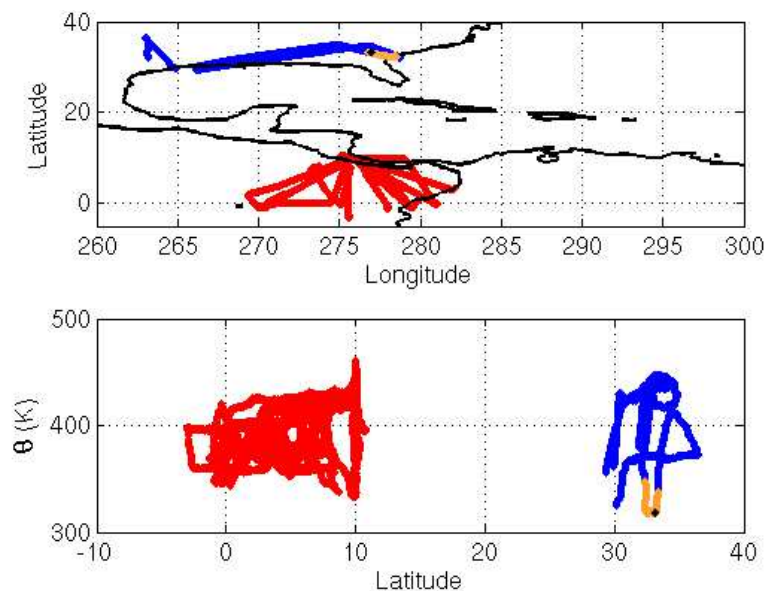
Full Screen / Esc

Printer-friendly Version

Interactive Discussion

**Mixing processes and exchanges in the tropical and the subtropical UT/LS**

R. James and B. Legras

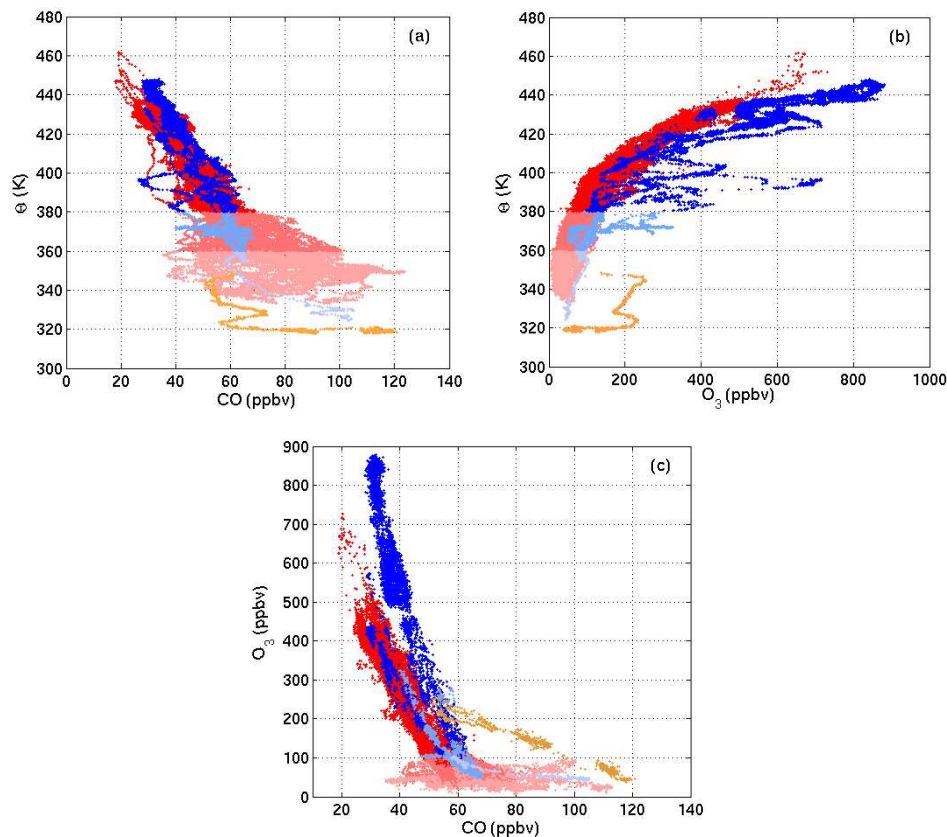


**Fig. 1.** Aircraft tracks during selected flights of Pre-AVE and CR-AVE. Upper panel: horizontal track. Lower panel: meridional track (red: tropical flights, blue: subtropical lower stratosphere, orange: subtropical dynamical tropopause layer, black: excluded data).

[Title Page](#)[Abstract](#)[Introduction](#)[Conclusions](#)[References](#)[Tables](#)[Figures](#)[◀](#)[▶](#)[◀](#)[▶](#)[Back](#)[Close](#)[Full Screen / Esc](#)[Printer-friendly Version](#)[Interactive Discussion](#)

**Mixing processes  
and exchanges in the  
tropical and the  
subtropical UT/LS**

R. James and B. Legras

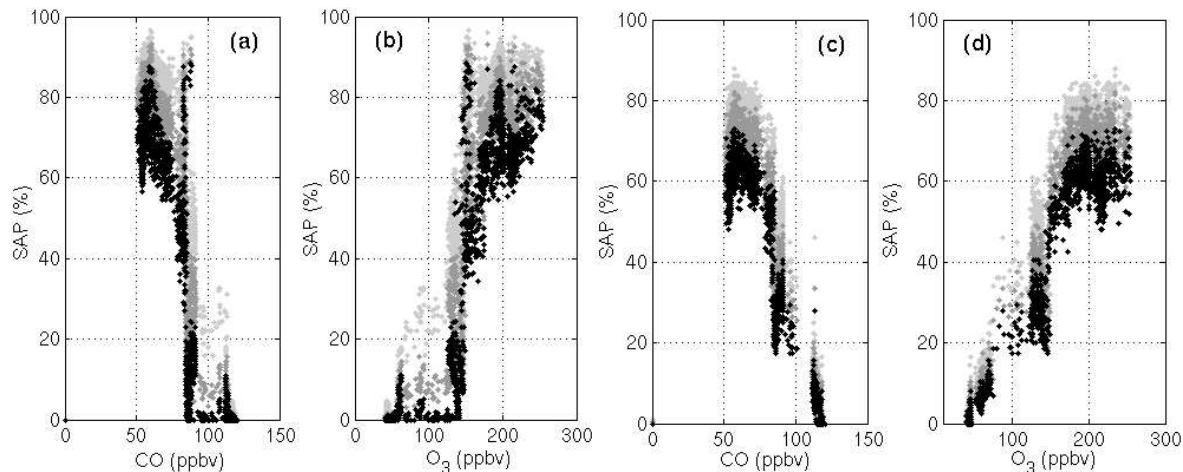


**Fig. 2.** (a) CO as a function of potential temperature; (b) O<sub>3</sub> as a function of potential temperature; (c) tracer-tracer relation with O<sub>3</sub> as a function of CO. Color code indicates the potential temperature (pink to red for tropical data and pale to dark blue for subtropical lower-stratosphere) with discontinuities at  $\theta=360$  K and  $\theta=380$  K, and marks the mixing line (orange). Black points in Fig. 1 are discarded from this figure.

[Title Page](#)[Abstract](#)[Introduction](#)[Conclusions](#)[References](#)[Tables](#)[Figures](#)[◀](#)[▶](#)[◀](#)[▶](#)[Back](#)[Close](#)[Full Screen / Esc](#)[Printer-friendly Version](#)[Interactive Discussion](#)

**Mixing processes and exchanges in the tropical and the subtropical UT/LS**

R. James and B. Legras

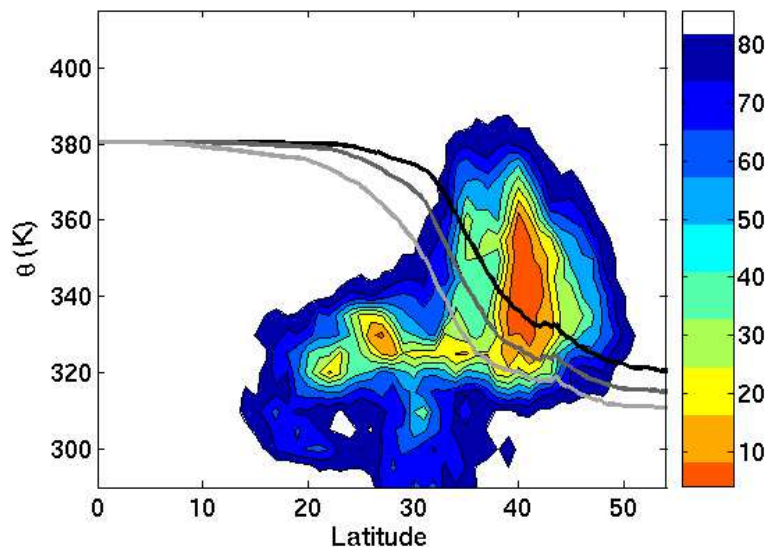


**Fig. 3.** (a–b) SAP as function of observed CO and O<sub>3</sub> for 2-day backward trajectories and parcels belonging to the subtropical dynamical tropopause; (c–d) same as (a–b) for 9-day backward trajectories. Light, medium and dark gray shows SAP for tropopause defined, respectively as, 2, 3 and 4  $10^{-6}$  K kg<sup>-1</sup> m<sup>2</sup> s<sup>-1</sup> surface.

[Title Page](#)[Abstract](#)[Introduction](#)[Conclusions](#)[References](#)[Tables](#)[Figures](#)[◀](#)[▶](#)[◀](#)[▶](#)[Back](#)[Close](#)[Full Screen / Esc](#)[Printer-friendly Version](#)[Interactive Discussion](#)

**Mixing processes and exchanges in the tropical and the subtropical UT/LS**

R. James and B. Legras



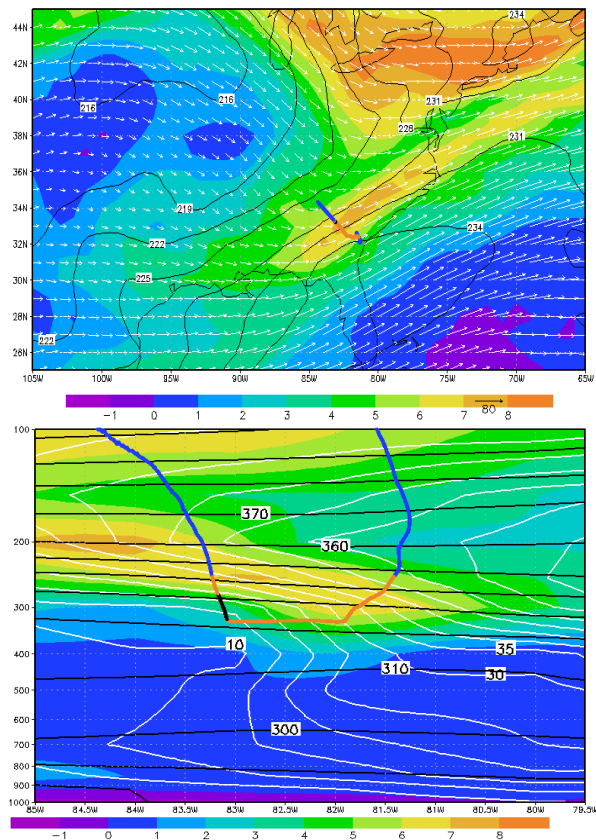
**Fig. 4.** Meridional distribution of the probability density function (pdf) of the particles contributing to the parcels belonging to the subtropical dynamical tropopause after a 9-day backward integration and as a function of latitude and potential temperature. The pdf is first calculated by binning parcels within boxes of  $1\text{ K} \times 1^\circ$ . Contours show integrated percentage of parcels by aggregating boxes starting from the most populated. The thick line shows the average tropopause calculated as the lower level satisfying either  $\theta > 380\text{ K}$  or  $PV > 2, 3$  or  $4 \cdot 10^{-6}\text{ K kg}^{-1}\text{ m}^2\text{ s}^{-1}$  (light, medium and dark gray).

[Title Page](#)[Abstract](#)[Introduction](#)[Conclusions](#)[References](#)[Tables](#)[Figures](#)[◀](#)[▶](#)[◀](#)[▶](#)[Back](#)[Close](#)[Full Screen / Esc](#)[Printer-friendly Version](#)[Interactive Discussion](#)



**Mixing processes and exchanges in the tropical and the subtropical UT/LS**

R. James and B. Legras



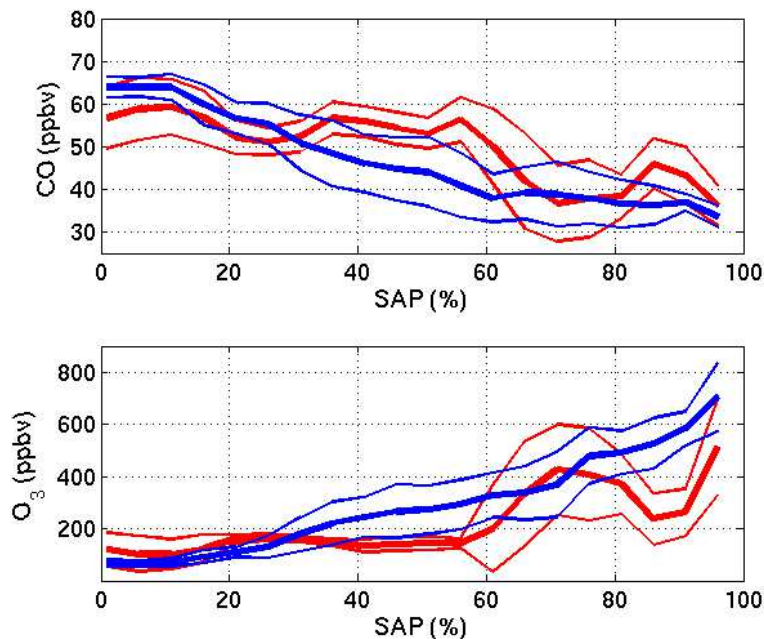
**Fig. 5.** Upper panel: meteorological conditions at 250 hPa on 19 January 2004 at 18:00 UT from ECMWF operational analysis. Colors show PV, contours represent temperature and arrows show wind. Lower panel: section in the vertical plane of the flight track. Colors show PV, black contours represent potential temperature and white contours show intensity of transverse wind. In both panels, the flight track is projected as a thick line with the same color codes as in Fig. 1.

10658

[Title Page](#)[Abstract](#)[Introduction](#)[Conclusions](#)[References](#)[Tables](#)[Figures](#)[◀](#)[▶](#)[◀](#)[▶](#)[Back](#)[Close](#)[Full Screen / Esc](#)[Printer-friendly Version](#)[Interactive Discussion](#)

**Mixing processes and exchanges in the tropical and the subtropical UT/LS**

R. James and B. Legras

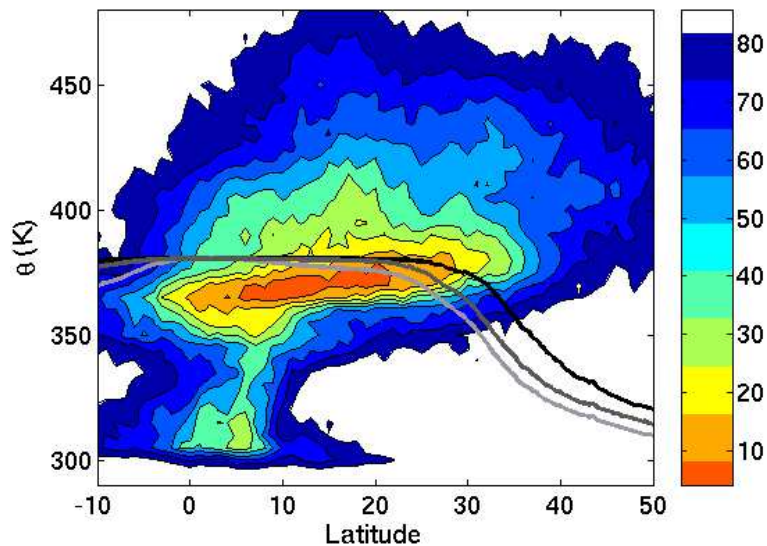


**Fig. 6.** In situ measurements of CO and O<sub>3</sub> as a function of SAP calculated after 9 days (red) and 35 days (blue). Thick lines show the average mixing ratio, and thin lines show one standard deviation for each SAP value.

[Title Page](#)[Abstract](#)[Introduction](#)[Conclusions](#)[References](#)[Tables](#)[Figures](#)[◀](#)[▶](#)[◀](#)[▶](#)[Back](#)[Close](#)[Full Screen / Esc](#)[Printer-friendly Version](#)[Interactive Discussion](#)

**Mixing processes and exchanges in the tropical and the subtropical UT/LS**

R. James and B. Legras

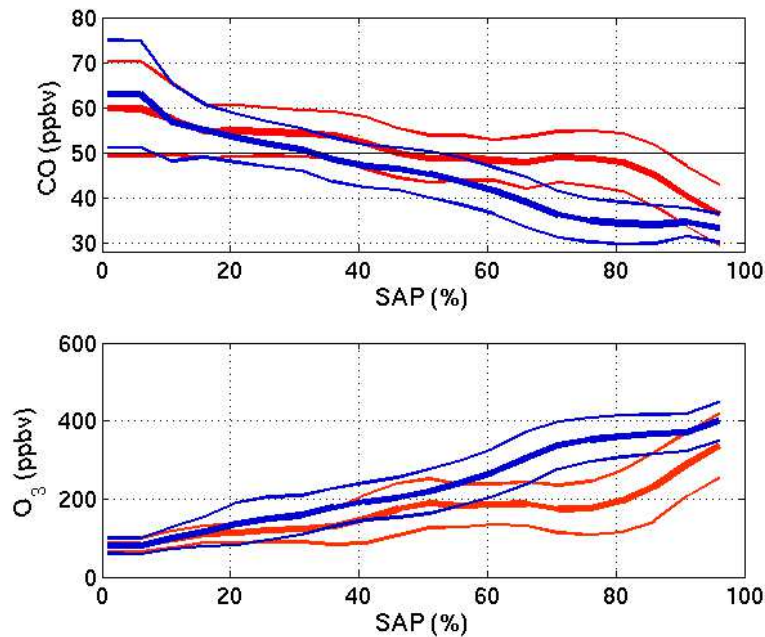


**Fig. 7.** Same as Fig. 4 for the distribution of subtropical particles initialized above 350 K after an integration of 35 days.

[Title Page](#)[Abstract](#)[Introduction](#)[Conclusions](#)[References](#)[Tables](#)[Figures](#)[◀](#)[▶](#)[◀](#)[▶](#)[Back](#)[Close](#)[Full Screen / Esc](#)[Printer-friendly Version](#)[Interactive Discussion](#)

**Mixing processes and exchanges in the tropical and the subtropical UT/LS**

R. James and B. Legras

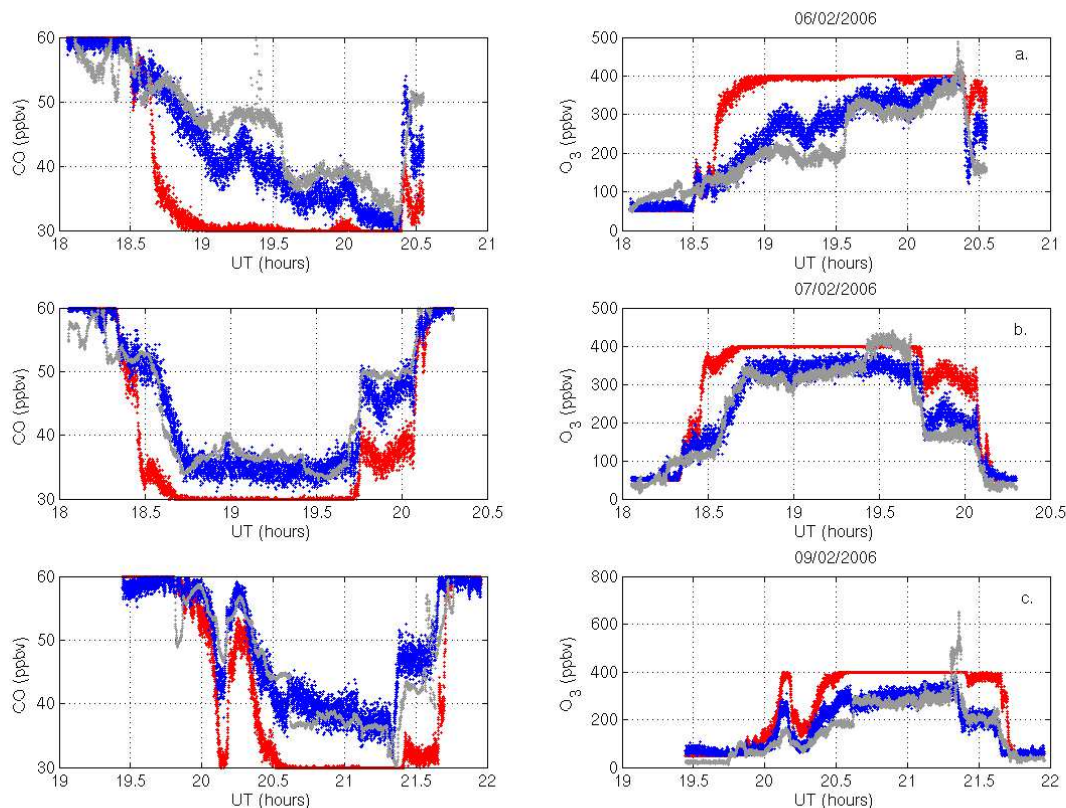


**Fig. 8.** Same as Fig. 6 but for parcels belonging to the tropics

[Title Page](#)[Abstract](#)[Introduction](#)[Conclusions](#)[References](#)[Tables](#)[Figures](#)[◀](#)[▶](#)[◀](#)[▶](#)[Back](#)[Close](#)[Full Screen / Esc](#)[Printer-friendly Version](#)[Interactive Discussion](#)

**Mixing processes and exchanges in the tropical and the subtropical UT/LS**

R. James and B. Legras

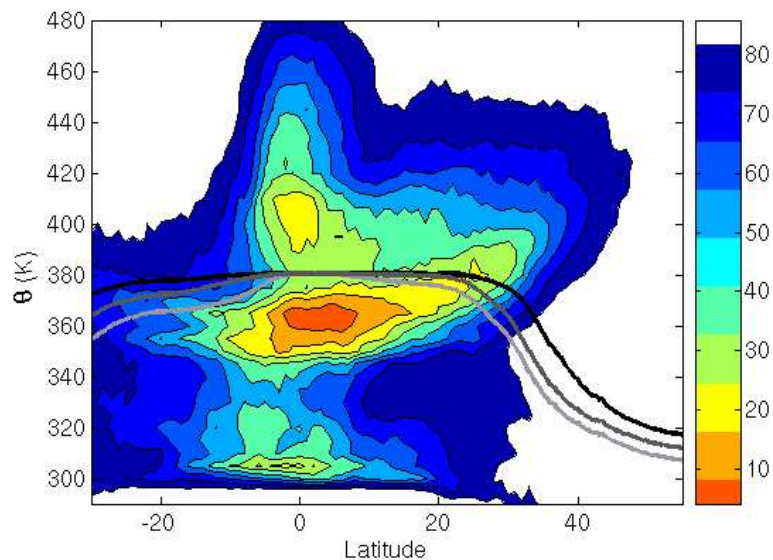


**Fig. 9.** Comparison between in situ measurements (grey) and reconstructed profiles from SAP calculated after 9 days (red) and 35 days (blue) for three tropical flights: **(a)** 06/02/06; **(b)** 07/02/06; **(c)** 09/02/06

[Title Page](#)[Abstract](#)[Introduction](#)[Conclusions](#)[References](#)[Tables](#)[Figures](#)[◀](#)[▶](#)[◀](#)[▶](#)[Back](#)[Close](#)[Full Screen / Esc](#)[Printer-friendly Version](#)[Interactive Discussion](#)

**Mixing processes and exchanges in the tropical and the subtropical UT/LS**

R. James and B. Legras

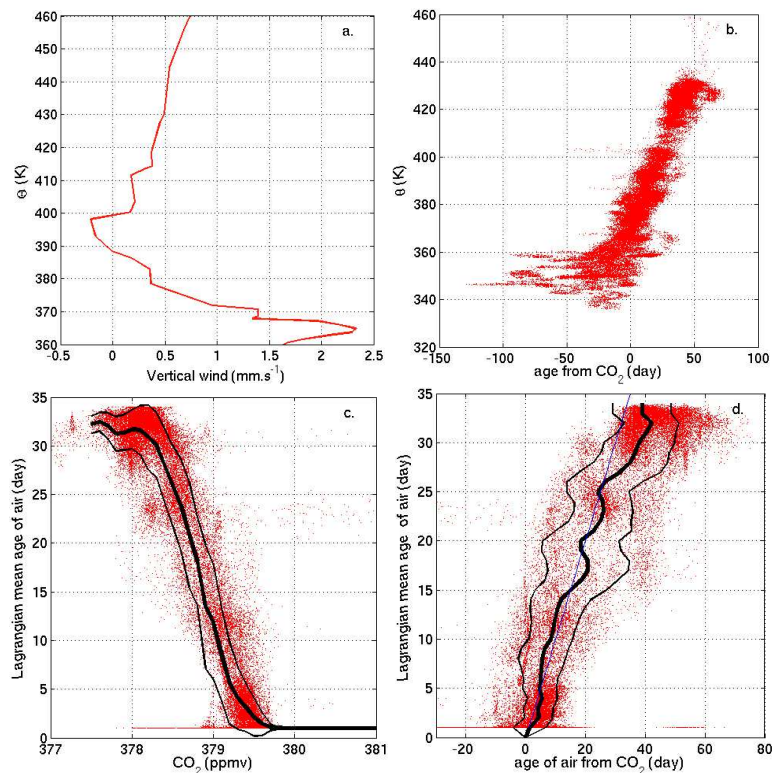


**Fig. 10.** Same as Fig. 4 but for the distribution of the tropical particles after an integration of one month

[Title Page](#)[Abstract](#)[Introduction](#)[Conclusions](#)[References](#)[Tables](#)[Figures](#)[◀](#)[▶](#)[◀](#)[▶](#)[Back](#)[Close](#)[Full Screen / Esc](#)[Printer-friendly Version](#)[Interactive Discussion](#)

## Mixing processes and exchanges in the tropical and the subtropical UT/LS

R. James and B. Legras



**Fig. 11.** (a) Average vertical velocity experienced by the particles in the tropical band (10° S–N). (b) Vertical distribution of age of air calculated from  $\text{CO}_2$  and with the reference level at 370 K, (c) Lagrangian calculated age from trajectories and with a reference level at 370 K as a function of measured  $\text{CO}_2$ . (d) Comparison between ages calculated from back trajectories and from  $\text{CO}_2$  measurements.

[Title Page](#)[Abstract](#)[Introduction](#)[Conclusions](#)[References](#)[Tables](#)[Figures](#)[◀](#)[▶](#)[◀](#)[▶](#)[Back](#)[Close](#)[Full Screen / Esc](#)[Printer-friendly Version](#)[Interactive Discussion](#)