



**HAL**  
open science

# A revised linear ozone photochemistry parameterization for use in transport and general circulation models: multi-annual simulations

D. Cariolle, H. Teyssède

► **To cite this version:**

D. Cariolle, H. Teyssède. A revised linear ozone photochemistry parameterization for use in transport and general circulation models: multi-annual simulations. *Atmospheric Chemistry and Physics Discussions*, 2007, 7 (1), pp.1655-1697. hal-00328036

**HAL Id: hal-00328036**

**<https://hal.science/hal-00328036>**

Submitted on 18 Jun 2008

**HAL** is a multi-disciplinary open access archive for the deposit and dissemination of scientific research documents, whether they are published or not. The documents may come from teaching and research institutions in France or abroad, or from public or private research centers.

L'archive ouverte pluridisciplinaire **HAL**, est destinée au dépôt et à la diffusion de documents scientifiques de niveau recherche, publiés ou non, émanant des établissements d'enseignement et de recherche français ou étrangers, des laboratoires publics ou privés.

**A linear ozone  
chemical scheme**

D. Cariolle and  
H. Teysse`re

# A revised linear ozone photochemistry parameterization for use in transport and general circulation models: multi-annual simulations

D. Cariolle<sup>1,2</sup> and H. Teysse`re<sup>3</sup>

<sup>1</sup>Météo-France, Toulouse, France

<sup>2</sup>Centre Européen de Recherche et Formation Avancée en Calcul Scientifique, Toulouse, France

<sup>3</sup>Centre National de Recherches Météorologiques, Météo-France, Toulouse, France

Received: 8 January 2007 – Accepted: 26 January 2007 – Published: 31 January 2007

Correspondence to: D. Cariolle (daniel.cariolle@cerfacs.fr)

Title Page

Abstract

Introduction

Conclusions

References

Tables

Figures

◀

▶

◀

▶

Back

Close

Full Screen / Esc

Printer-friendly Version

Interactive Discussion

## Abstract

This article describes the validation of a linear parameterization of the ozone photochemistry for use in upper tropospheric and stratospheric studies. The present work extends a previously developed scheme by improving the 2D model used to derive the coefficients of the parameterization. The chemical reaction rates are updated from a compilation that includes recent laboratory works. Furthermore, the polar ozone destruction due to heterogeneous reactions at the surface of the polar stratospheric clouds is taken into account as a function of the stratospheric temperature and the total chlorine content.

Two versions of the parameterization are tested. The first one only requires the resolution of a continuity equation for the time evolution of the ozone mixing ratio, the second one uses one additional equation for a cold tracer. The parameterization has been introduced into the chemical transport model MOCAGE. The model is integrated with wind and temperature fields from the ECMWF operational analyses over the period 2000–2004. Overall, the results show a very good agreement between the modelled ozone distribution and the Total Ozone Mapping Spectrometer (TOMS) satellite data and the “in-situ” vertical soundings. During the course of the integration the model does not show any drift and the biases are generally small. The model also reproduces fairly well the polar ozone variability, with notably the formation of “ozone holes” in the southern hemisphere with amplitudes and seasonal evolutions that follow the dynamics and time evolution of the polar vortex.

The introduction of the cold tracer further improves the model simulation by allowing additional ozone destruction inside air masses exported from the high to the mid-latitudes, and by maintaining low ozone contents inside the polar vortex of the southern hemisphere over longer periods in spring time.

It is concluded that for the study of climatic scenarios or the assimilation of ozone data, the present parameterization gives an interesting alternative to the introduction of detailed and computationally costly chemical schemes into general circulation models.

ACPD

7, 1655–1697, 2007

## A linear ozone chemical scheme

D. Cariolle and  
H. Teyssède

Title Page

Abstract

Introduction

Conclusions

References

Tables

Figures

◀

▶

◀

▶

Back

Close

Full Screen / Esc

Printer-friendly Version

Interactive Discussion

EGU

## 1 Introduction

The study of the climate evolution requires the implementation of global models coupling ocean, atmosphere and cryosphere. Due to the influence of radiatively active gases, atmospheric chemistry is now considered as an integral part of the climate system and the global models tend to include the main species and chemical cycles that allow the computation of their abundance. This increases significantly the complexity of the code since several tens of species and hundreds of reactions are required to model adequately the chemical production and loss rates of the major active species. This is particularly true for ozone whose photochemistry encounters different regimes in the troposphere and the stratosphere, depending on the local thermodynamic state and on the possible activation of heterogeneous processes at the surface of aerosols and cloud particles. The result is that current state-of-the-art models (e.g. Chipperfield, 1999) that include a comprehensive description of the atmospheric chemistry require a large amount of computer time to run the multi decade simulations needed for climate studies. In addition, the build up of biases during the course of these long model integrations is very common since deficiencies in dynamics, temperature drifts, and limitations in the representation of the cloud cover can have a feed-back on photolysis and chemical rates and the distribution of trace species. The advantage of developing very simplified chemical schemes is to retain the major ingredients of the atmospheric chemistry while avoiding the complexity of the implementation of detailed chemical schemes.

For stratospheric and upper tropospheric ozone studies Cariolle and Déqué (1986), hereafter referred as CD86, were among the first to follow this approach. They developed a simple scheme by linearisation of the ozone continuity equation using a 2D photochemical model. Their scheme has been introduced in many models, such as the ARPEGE-Climat General Circulation Model (Déqué et al., 1994) and the ECMWF IFS model (Andersson et al., 2003, Oikonomou and O'Neill, 2006). Other linear schemes have been developed later-on, using climatological distributions of trace species to set

### A linear ozone chemical scheme

D. Cariolle and  
H. Teysse re

Title Page

Abstract

Introduction

Conclusions

References

Tables

Figures

◀

▶

◀

▶

Back

Close

Full Screen / Esc

Printer-friendly Version

Interactive Discussion

the reference state (e.g. LINOZ, McLinden et al., 2000), or using a 2D model to calculate basic state and derivatives (e.g. Chem2D-OPP, McCormack et al., 2004).

Within ARPEGE-Climat, ozone is treated as a prognostic variable with sources and sinks evaluated using the CD86 linear scheme and is used for the radiative calculations. This allows one to study several types of ozone-climate interactions, like for instance the impact on the ozone content of the CO<sub>2</sub> increase (Mahfouf et al., 1994) or the temperature response to the localised ozone depletion over Antarctica (Cariolle et al., 1990). However, recent analysis of model outputs (M. Déqué, private communication) revealed a tendency of the ARPEGE-Climat general circulation model (GCM) to be colder by 2–4 K than climatology in the lower stratosphere between 100 and 50 hPa, the ozone distribution in this altitude range being also lower than climatological data (Fortuin and Langematz, 1994; referenced FL hereafter) by about 10 to 15%. At ECMWF, the CD86 ozone scheme has been used for assimilation of ozone observations and some of the coefficients derived by the 2D model had to be replaced by the FL dataset in order to remove biases in the lower stratosphere (Dethof and Holm, 2004).

The initial development of the CD86 linear scheme dates from more than twenty years, and more accurate global ozone observations have been obtained, important chemical processes revealed, and some reaction rates have been re-evaluated since then. In this context it is important to know if the linear approach followed so far could be improved in the light of our current knowledge, or if it is too restrictive compared to the accuracy reached by models that include a comprehensive treatment of the atmospheric chemistry. We show in the present article that it is still possible to obtain realistic ozone simulations using the linear model, and that the results compare favourably to satellite and in-situ observations.

The layout of this paper is as follows. In Sect. 2 we report on the latest updates of the linear scheme with various treatments for the ozone destruction by polar heterogeneous chemistry. In Sect. 3 we discuss the results obtained by the implementation of the linear scheme within a chemical transport model forced with operational me-

## A linear ozone chemical scheme

D. Cariolle and  
H. Teyssède

[Title Page](#)[Abstract](#)[Introduction](#)[Conclusions](#)[References](#)[Tables](#)[Figures](#)[⏪](#)[⏩](#)[◀](#)[▶](#)[Back](#)[Close](#)[Full Screen / Esc](#)[Printer-friendly Version](#)[Interactive Discussion](#)

teorological analyses. Emphasis is placed on multi-annual simulations, on the ozone variability, and on the validation of the model outputs against total ozone column measurements from the TOMS instrument. The influence of the various methods used to take into account the ozone loss due to heterogeneous chemistry is also discussed.

5 The final section summarizes the results.

## 2 The linear ozone model

### 2.1 Basic formulation

Following CD86 the ozone continuity equation is expanded into Taylor series up to first order around the local value of the ozone mixing ratio, the temperature and the overhead ozone column:

$$\partial r_{O_3} / \partial t = A_1 + A_2(r_{O_3} - A_3) + A_4(T - A_5) + A_6(\Sigma - A_7) + A_8 r_{O_3} \quad (1)$$

Where the  $A_i$  terms are monthly averages calculated using the 2D photochemical model MOBIDIC (Cariolle and Brard, 1984):

$A_1 = (P - L)$  : Production and loss rate

$A_2 = \partial(P - L) / \partial r_{O_3}$

$A_3 = r_{O_3}$  : ozone mixing ratio

$A_4 = \partial(P - L) / \partial T$

$A_5 = T$  : temperature

$A_6 = \partial(P - L) / \partial \Sigma$

$A_7 = \Sigma$  : ozone column

$A_8$ : heterogeneous chemistry term,

whereas the other terms indicate the current 3D values of the ozone mixing ratio  $r_{O_3}$ , the temperature  $T$ , and the local overhead ozone column  $\Sigma$ , respectively.

Since our objective was to improve the accuracy of the parameterization, an important rewriting of the 2D model was carried out. The chemistry scheme used in

## A linear ozone chemical scheme

D. Cariolle and  
H. Teyssède

Title Page

Abstract

Introduction

Conclusions

References

Tables

Figures

◀

▶

◀

▶

Back

Close

Full Screen / Esc

Printer-friendly Version

Interactive Discussion

MOBIDIC includes the main gas-phase reactions driving the  $\text{NO}_x$ ,  $\text{HO}_x$ ,  $\text{ClO}_x$ ,  $\text{BrO}_x$  catalytic cycles, with 30 transported long-lived species, and 30 short lived species computed using steady-state assumptions (see Table 1). The gas-phase chemical rates have been upgraded according to the recommendations contained in the JPL-2003-25 report. Since the heterogeneous processes involved in the polar stratospheric chemistry are highly non-linear and depend on the three dimensional structure of the atmosphere, we decided not to include any heterogeneous chemistry in the 2D model but, rather, to introduce an ad-hoc ozone destruction term,  $A_g$ , in Eq. (1) when conditions for polar stratospheric cloud (PSC) formation are met. The term  $A_g$  was not introduced in the original CD86 formulation because the heterogeneous ozone destruction was not considered at that time. Two different formulations for evaluating the ozone loss rates are adopted in the present study, as described in the next section.

The dynamical and transport formulations of the 2D model were also updated. The model is now integrated using a dynamical forcing from a transient scenario of the ARPEGE-Climat model which takes into account the evolution of trace gases having an impact on radiation and chemistry. In particular, the evolutions of  $\text{CO}_2$ ,  $\text{N}_2\text{O}$ ,  $\text{CH}_4$ , CFCs and bromine compounds are taken into account for the period 1958–2000. All the necessary input required for the dynamical forcing used by the MOBIDIC model is obtained from 10 year averages of the ARPEGE-Climat outputs corresponding to the period 1990–2000. The MOBIDIC model adopts the residual meridional circulation formalism (Dunkerton, 1978) with the necessary heat and momentum fluxes derived from the ARPEGE-Climat outputs. Prather's advection scheme is used for transport of the long lived species (Prather, 1986). The overall characteristics of the MOBIDIC model are summarized in Table 1.

The partial derivatives appearing in Eq. (1) are obtained by perturbing the 2D model fields by  $\pm 10\%$  for ozone mixing ratio and the ozone column, and by  $\pm 10\text{K}$  for temperature. This is done for each month and a set of zonal mean coefficients is obtained. To test the accuracy of the linearity of the system, we applied lower and larger perturbations, and found very little deviations in the computed  $A_j$ . This means that the first

**A linear ozone  
chemical scheme**D. Cariolle and  
H. Teysse re

Title Page

Abstract

Introduction

Conclusions

References

Tables

Figures

◀

▶

◀

▶

Back

Close

Full Screen / Esc

Printer-friendly Version

Interactive Discussion

order approximation used here is valid for a wide range of situations, as those generated by 3D models. This result is consistent with the original findings of CD86 and those of McLinden et al. (2000), who followed a similar approach to derive the LINOZ scheme.

5 The background ozone distribution produced by the 2D model and used within the parameterization (the  $A_3$  term) is shown in Fig. 1 for the month of January. The main features seen in the observations are well reproduced with the ozone maximum value just above 10 ppmv in the 30–35 km range centered at 20 S at that season. For all seasons, compared to the FL climatology and the HALOE ozone measurements (Morris et al., 2002), the local differences at low and mid-latitudes are below 15% in the altitude range 15 to 40 km, with larger differences with HALOE at the stratopause region, around +40%, and in the troposphere compared to the FL data. The overall ozone distribution is similar to that obtained by global models.

10 The amplitude of the  $A_1$  term in Eq. (1) gives an indication about regions of net ozone production or loss. The largest positive tendencies are found in the middle stratosphere at low and mid latitude between 10 and 35 km (Fig. 2). Ozone is produced by chemistry and removed by horizontal and vertical transport. Vertical transport at the equator plays an important role since the largest negative ozone tendencies are found above that region, vertical motions bring air with maximum ozone mixing ratios to altitudes where it is tightly controlled by photochemistry.

20 Thus, the effect of local unbalanced chemistry on the ozone distribution depends on the intensity of transport and on the photochemical relaxation time  $\tau$ . The latter is obtained directly from the linearized scheme,  $\tau = -1/A_2$ , and is shown in Fig. 3 for the month of January. Above 35 km in the day-light part of the atmosphere the relaxation time is short, below one week. It increases in the lower stratosphere due to the progressive absorption of U.V. radiation that controls the ozone production by photodissociation of molecular oxygen, and reaches a maximum of about 100 days at low latitudes near the tropopause. In the troposphere, due to the presence of the active  $\text{HO}_x$  chemistry, the relaxation time decreases again to reach a minimum of about

---

## A linear ozone chemical scheme

D. Cariolle and  
H. Teysse re

---

[Title Page](#)[Abstract](#)[Introduction](#)[Conclusions](#)[References](#)[Tables](#)[Figures](#)[◀](#)[▶](#)[◀](#)[▶](#)[Back](#)[Close](#)[Full Screen / Esc](#)[Printer-friendly Version](#)[Interactive Discussion](#)



one week at the surface near the equator. Compared to CD86, the values of  $\tau$  are very similar in the mid and upper stratosphere but slightly reduced in the lower stratosphere, a result of the updated chemical rates. At high latitudes beyond  $60^\circ$  in the upper troposphere-lower stratosphere the values of  $\tau$  exceed 100 days for all seasons and there is a very weak control of the ozone concentration by gas-phase chemistry. In those regions ozone transport and ozone destroying mechanisms by heterogeneous chemistry (term A8) play a major role. The next section describes how PSC chemistry is taken into account.

## 2.2 Heterogeneous processes and ozone loss

In the stratosphere heterogeneous reactions occur at the surface of sulphate aerosols and polar clouds. The latter are responsible for the largest part of the high latitude ozone destruction in winter and spring, and must be accounted for in the development of the present parameterization.

PSC chemistry operates via two main steps. During the first step, the composition of air masses that encountered temperatures below the threshold value for cloud formation is modified by the activation of chlorine species, the decrease in nitrogen oxide concentration, along with denitrification and dehydration (Solomon,1999). This preconditioning phase is very efficient inside the southern hemisphere (SH) polar vortex during winter and spring due to the long duration of the polar night and the very low temperatures that prevail. In the northern hemisphere (NH) the same processes are somewhat less efficient because the polar vortex is more disturbed and the temperature is higher. In the simplified approach used here, the key parameter to be retained is the threshold temperature for polar cloud formation, about 195 K in the conditions of humidity and pressure of the lower stratosphere.

After the preconditioning phase the processed air masses are prone to ozone destruction provided that they are lighted by the sun, and that their chlorine content is large enough. The most efficient ozone destroying catalytic cycle involves the formation of the chlorine monoxide dimer  $\text{Cl}_2\text{O}_2$ , the concentration of which is close to the

### A linear ozone chemical scheme

D. Cariolle and  
H. Teyssède

Title Page

Abstract

Introduction

Conclusions

References

Tables

Figures

◀

▶

◀

▶

Back

Close

Full Screen / Esc

Printer-friendly Version

Interactive Discussion

**A linear ozone  
chemical scheme**D. Cariolle and  
H. Teyssède

total chlorine content ( $Cl_x$ ) if the air masses have been fully activated. In that case the ozone destruction rate is a quadratic function of the  $Cl_x$  concentration and is sensitive to the temperature via the rate of  $Cl_2O_2$  thermal decomposition. An other destroying cycle involving bromine compounds (via the reaction  $BrO + ClO$ ) can play a role in the polar ozone destruction with a rate proportional to the total bromine and chlorine contents. Therefore, adopting a quadratic function of the  $Cl_x$  concentration for the total ozone destruction rate should be considered as an upper limit.

### 2.2.1 Parameterization based on the local temperature

It is of course not possible to include the details of all the processes described above in the adopted framework. So, two versions of the parameterization have been developed. The first one (hereafter referred as v2a) retains a single term  $A_8 = -K_{het}$  in Eq. (1) for an additional destruction of ozone when the temperature is low enough and the sun is over the horizon:

$$K_{het} = 1/\tau_0(Cl_x/2 \text{ ppbv})^2 \quad (2)$$

with  $1/\tau_0 = 1/(8 \text{ days})$  for daytime conditions when  $T \leq 195 \text{ K}$ , and  $1/\tau_0 = 0$  otherwise. This parameterization assumes that preconditioning and destruction processes are working simultaneously and stop as soon as temperature is high enough for the PSCs to evaporate. The destruction rate is a quadratic function of total chlorine mixing ratio and is set to one week for 2 ppbv of total chlorine. The distribution of the total chlorine,  $Cl_x$ , is calculated by the MOBIDIC model and monthly mean  $A_8$  terms are produced.

The total chlorine content reaches 3.6 ppbv in the upper stratosphere. It corresponds to the year 2000 situation. Given the progressive return of sunlight at high latitudes, the effective destruction time of ozone in the SH spring vortex is of the order of 15 days, which is consistent with the observed evolution of the vertical profiles from ozone soundings. A similar rate was adopted with success by Cariolle et al. (1990) in their simulation of the Antarctic ozone hole.

[Title Page](#)[Abstract](#)[Introduction](#)[Conclusions](#)[References](#)[Tables](#)[Figures](#)[◀](#)[▶](#)[◀](#)[▶](#)[Back](#)[Close](#)[Full Screen / Esc](#)[Printer-friendly Version](#)[Interactive Discussion](#)

Within MOBIDIC the introduction of the  $A_8$  term leads to an ozone distribution that compares well with observations. For instance the seasonal evolution of the total ozone column (Fig. 4) is in rather good agreement with the TOMS data (version 8 algorithm available from <http://toms.gsfc.nasa.gov/>). The ozone values are below 200 Dobson units in the vortex in September, whereas the equatorial minimum is in the 255–280 range. Due to a rather early polar SH warming from the ARPEGE-Climat forcing, at the end of September, the ozone destruction is limited in time. Section 3 reports chemical transport model (CTM) calculations with a larger ozone destruction that can extend to early November depending on the dynamical and temperature forcing.

The high latitude NH spring maximum is just over 480 Dobson units, a value that compares well with TOMS data, although the adopted residual circulation tends to confine the ozone maximum over the pole and does not bring enough ozone at mid latitudes. This shortcoming is not seen in the ARPEGE-Climat ozone simulations and appears as a limitation of the residual circulation approach.

### 2.2.2 Parameterization based on the distribution of a cold tracer

One of the major shortcomings on the way heterogeneous processes are taken into account in the scheme described above is the assumption that pre-conditioning and ozone destruction phases are simultaneous. The pre-conditioning phase depends indeed on the history of the air masses. In the SH the air within the core of the polar vortex stays below the temperature for PSCs formation from June to October, whereas in the NH the dynamics is usually much more perturbed in winter and the pre-conditioning periods can be quite sporadic. One way to address this issue is to record the air masses history by means of a tracer whose concentration depends on the temperature encountered. To this end, we define a "cold tracer" whose mixing ratio,  $\delta$ , is varying between 0 to 1. The value of  $\delta$  increases exponentially to the asymptotic value of 1 on a time scale  $\tau_1$  when the air temperature is below the threshold value for polar cloud formation. This accounts for the pre-conditioning phase where chlorine is activated and the air masses are prone to ozone destruction. The deactivation of air masses

**A linear ozone chemical scheme**

D. Cariolle and  
H. Teysse re

Title Page

Abstract

Introduction

Conclusions

References

Tables

Figures

◀

▶

◀

▶

Back

Close

Full Screen / Esc

Printer-friendly Version

Interactive Discussion

**A linear ozone  
chemical scheme**D. Cariolle and  
H. Teysse re

can then operate either by mixing with inactivated air masses, or by PSC's melting and the return of  $\text{NO}_x$  species in the chemical system. In the last case, the ozone-destroying cycles involving  $\text{ClO}$  and  $\text{Cl}_2\text{O}_2$  become inefficient due to their competition with  $\text{ClONO}_2$  formation and the  $\text{ClO} + \text{NO} \rightarrow \text{Cl} + \text{NO}_2$  reaction. The return of the  $\text{NO}_x$  radicals depends on the concentration of the reservoir species  $\text{N}_2\text{O}_5$  or  $\text{HNO}_3$ . Satellite observations (Mengistu Tsidu et al., 2004) show that the concentration of  $\text{N}_2\text{O}_5$  is quite low in the winter polar vortices due to its conversion to  $\text{HNO}_3$  by heterogeneous reactions on aerosols and PSCs. Hence, after the PSC melting the major reservoir species is in the form of  $\text{HNO}_3$ . The deactivation by  $\text{NO}_x$  increase occurs on a time scale  $\tau_2$ , and since the source of  $\text{NO}_x$  comes from the  $\text{HNO}_3$  destruction we assumed  $\tau_2$  equal to the lifetime of  $\text{HNO}_3$ , taking into account photodissociation and destruction by reaction with the OH radical.

One shortcoming of this approach is that it assumes that there is always enough  $\text{HNO}_3$  to restore the  $\text{NO}_x$  species, about 2 ppbv are required. In case of highly denitrified air masses due to ice particle sedimentation, this could not be the case and the present scheme could underestimate the occurrence of processed air masses and the ozone depletion. Results from the next sections show that in practice this seems not to be the case because in highly processed air masses ozone depletion rates are larger than calculated  $\text{NO}_x$  restoring rates. Hence, the continuity equation for the tracer mixing ratio  $\delta$  reads:

$$d \delta / dt = 1 / \tau_1 (1 - \delta) - 1 / \tau_2 \delta \quad (3)$$

with  $1 / \tau_1 = 0$  if  $T > 195\text{K}$  and  $1 / \tau_2 = 0$  if  $T < 195\text{K}$ ; and with  $1 / \tau_2 = \text{loss rate of } \text{HNO}_3$ .

With this scheme the concentration of the cold tracer mimics the behavior of the air masses. The  $\delta$  values are close to unity for freshly processed air, or more aged processed air that has remained in the dark without significant mixing with unprocessed air. The values are close to zero for air not having being in contact with PSCs, or processed air that has been mixed with unprocessed air or exposed to sufficient sunlight for  $\text{NO}_x$  restoring.

[Title Page](#)[Abstract](#)[Introduction](#)[Conclusions](#)[References](#)[Tables](#)[Figures](#)[◀](#)[▶](#)[◀](#)[▶](#)[Back](#)[Close](#)[Full Screen / Esc](#)[Printer-friendly Version](#)[Interactive Discussion](#)

**A linear ozone  
chemical scheme**D. Cariolle and  
H. Teysse re

Title Page

Abstract

Introduction

Conclusions

References

Tables

Figures

◀

▶

◀

▶

Back

Close

Full Screen / Esc

Printer-friendly Version

Interactive Discussion

For the numerical computations referred thereafter  $\tau_1$  was set to 6 h, a typical time scale for chlorine activation, and  $\tau_2$  was calculated using the MOBIDIC model. Figure 5 shows that the rate  $\tau_2$  is quite long in the lower stratosphere in winter/spring, between 2 to 4 weeks at high and mid-latitudes. It means that processed air can travel a long way from the vortex edge with still a large potential for ozone destruction. Hadjinicolaou et al. (1997) used the CD86 scheme with a similar cold tracer formulation to account for polar ozone destruction. However, the lifetime used for the tracer was substantially shorter, i.e. 5 days in the NH and 10 days in the SH. We discuss below the need for the ozone destroying rate to be a function of temperature. This is important because the air masses extracted from the vortex will warm by several tenths of degrees when transported at lower latitudes. With our formulation (Eq. 4), an increase of the cold tracer temperature from 195 to 220 K would decrease the destruction rate by 40 % and bring the effective destruction rate close to what is obtained with a tracer whose lifetime is between 1,2 to 2,5 weeks without temperature dependance for ozone destruction. Consequently, the two formulations are not so different as they may appear. Though ours is based on a more detailed analysis of the chemical processes at play.

Using the cold tracer concentration the  $A_8$  term of Eq. (1) now takes the form:

$$A_8 = -K_{\text{het}} \delta (195/T)^{4.5} \quad (4)$$

with  $K_{\text{het}}$  given by Eq. (2), and with  $1/\tau_0 = 1/(8 \text{ days})$  for daytime conditions without temperature dependence.

Compared to the v2a formulation, the ozone loss can now occur in processed air without the presence of PSCs and in remote regions, away from the location where it has been activated. However, even in highly processed air, the destruction rate must now depend on temperature since a temperature elevation would decrease the  $\text{Cl}_2\text{O}_2$  concentration and offset the ozone destroying catalytic cycle. This effect is introduced via the term  $(195/T)^{4.5}$  (see Eq. 4), i.e. the temperature dependance of the reaction rate for  $\text{Cl}_2\text{O}_2$  thermal decomposition. This effect should be important during the export of the polar processed air masses to the mid-latitudes. The heating by solar UV absorption increases and the air masses warm, so that thermal decomposition of

Cl<sub>2</sub>O<sub>2</sub> becomes significant. Additional heating also occurs with mixing of polar air with mid-latitude air. As already discussed, this reduces the effective duration of ozone destruction during air masses export.

Therefore, the second version of the ozone parameterization (hereafter referred as v2b) is obtained by integration of two continuity equations, the first one for ozone (Eq. 1 with the A8 term given by Eq. 4) and the second one for the cold tracer (Eq. 3). Compared to v2a where only Eq. (1) is solved, the required computing time is doubled, but the representation of the ozone destruction parametrization follows more closely our current understanding of the most important processes. Model simulations reported in Sect. 3 show that the timing for the SH polar ozone depletion is better reproduced by the v2b than the v2a formulation, and that at mid-latitudes significant ozone reductions are induced by the cold tracer transport and subsequent ozone destruction.

### 3 Implementation of the ozone scheme in a Chemical Transport Model

#### 3.1 Multi-annual simulations with dynamical forcing from ECMWF operational analyses

The v2a parameterization has been implemented within the MOCAGE CTM (Josse et al., 2004) and a 5 year simulation has been performed forced by the ECMWF operational analyses for winds, humidity, temperature and surface pressure. The simulation covers the period from January 2000 to the end of 2004. The CTM used the same vertical coordinate and resolution as the ECMWF model, with 60 levels and a horizontal resolution corresponding to a spectral T42 grid (about 2, 8° resolution). The ozone advection is performed with a semi-lagrangian scheme without any diffusion or parameterised transport for sub-grid processes. Emphasis is therefore placed on the stratospheric and upper tropospheric ozone distributions.

Figure 6 shows the simulation of the total ozone column over the period 2001–2004, after one year of spin up. Overall the model reproduces the main features of the TOMS

## A linear ozone chemical scheme

D. Cariolle and  
H. Teysse re

Title Page

Abstract

Introduction

Conclusions

References

Tables

Figures

⏪

⏩

◀

▶

Back

Close

Full Screen / Esc

Printer-friendly Version

Interactive Discussion

**A linear ozone  
chemical scheme**D. Cariolle and  
H. Teysse re

Title Page

Abstract

Introduction

Conclusions

References

Tables

Figures

◀

▶

◀

▶

Back

Close

Full Screen / Esc

Printer-friendly Version

Interactive Discussion

observations with the equatorial minimum in the 230–260 DU range, the maximum in spring over the high northern latitudes, the belt of ozone maxima in the southern mid-latitudes, and the “ozone hole” development at polar latitudes in the SH. At low latitudes the seasonal evolution of the ozone content is well captured, but with a tendency to underestimate the meridional amplitude of the equatorial minimum that forms a dipole structure in the TOMS data. This structure is particularly marked in 2002 and 2004. For those years the model underestimates the minimum that develops from April to June at 20° S, and produces an ozone minimum at 20° N in November–December, about one month earlier than observed. The model behaviour is the response of the meridional displacements of the maximum of the vertical velocities associated with the upward branch of the Hadley circulation. In the IFS model that generates the analyses, the vertical velocities in the upper troposphere are forced by the equatorial convection. The CTM results might reveal some weakness in the position and/or intensity of that process.

In the SH mid-latitudes the model simulation compares well with the satellite data, with a progressive build up of a belt of ozone maxima during winter and a relative minimum during February–March. The absolute ozone amounts are however overestimated by about 20 DU throughout the year. At high southern latitudes the polar ozone depletion in spring is well captured by the parameterization. The ozone decrease within the polar vortex starts with the return of the sunlight and reaches a minimum in the range 100–120 DU in late September, in good agreement with observations. To evaluate the effect of the heterogeneous destruction on the ozone distribution we have integrated the model for the year 2001 without the  $A_g$  term. The total ozone column inside the vortex remains in the range 280–320 DU from June to September, and the belt of ozone maximum at mid-latitudes in the range 380–420 DU, about 40 DU larger than the simulation with the full implementation of the parameterization. It means that significant ozone depletion is exported from the polar to the mid-latitudes, and this process is essential for a correct simulation of the SH ozone distribution.

The year-to-year variability is also well reproduced and follows the variations of the

temperatures inside the vortex. In particular, the warmings of September 2002 and October 2004 drive an ozone increase over the pole that is well captured. Section 3.3 goes through the details of the model simulation for the perturbed 2002 and the rather unperturbed 2001 springs. The major weakness of the simulation which appears almost every year, is linked to an early recovery of the ozone content inside the vortex in October - November when the temperature increases over the chosen 195 K threshold for PSC formation. Section 3.4 shows that this shortcoming is improved when the v2b parameterization with cold tracer is used.

In the NH mid and high latitudes the model catches the main features of the seasonal variations, with the build up of ozone maxima in March–April followed by a decrease up to October. The year to year variability is also reproduced with for example a larger ozone amount in 2001 than for the other years. However, compared to the TOMS data, the model overestimates the polar ozone by about 40 DU in Spring and Autumn. Comparison of the ozone vertical profiles with sounding data shows that ozone is overestimated in the lower stratosphere-upper troposphere between 200 and 70 hPa. This could be due to insufficient parameterised PSC's ozone depletion in winter and spring, or excessive ozone transport from the mid-latitudes by the ECMWF wind analyses. Section 3.4 shows that adopting the parameterization with the cold tracer formulation improves the simulation without however removing completely the model overestimation. This overestimation is not observed with the MOBIDIC model which is driven by the meridional mean circulation from the ARPEGE-Climat GCM (see Fig. 4). It must be therefore attributed to the equator to pole circulation forced by the ECMWF analyses. The next section describes an experiment which clearly shows that the latter is more intense than the one obtained from the GCM.

### 3.2 Consistency test for the large scale meridional circulation

Our linearised ozone scheme is not directly linked to a specified transport model in the sense that the partial derivatives in Eq. (1) are calculated by only solving the chemical equations within the model. However, on average, the term  $A_1$  must be balanced by

## A linear ozone chemical scheme

D. Cariolle and  
H. Teysse re

Title Page

Abstract

Introduction

Conclusions

References

Tables

Figures

◀

▶

◀

▶

Back

Close

Full Screen / Esc

Printer-friendly Version

Interactive Discussion



## A linear ozone chemical scheme

D. Cariolle and  
H. Teyssède

the divergence of all the transport fluxes:  $A_1 = -Div_{2D}(Flux(A_3))$ . For the 2D model this is valid for yearly averages but it also holds approximately at any time because the net chemical ozone tendency and the divergence of the transport fluxes are almost balanced in regions where the ozone lifetime is short enough. It is therefore possible to obtain an indirect measure of the ozone changes brought by the meridional circulation forced by the ECMWF analyses and compare it to the one used by the 2D model. To that end, we have conducted an experiment where ozone is advected by modified wind fields  $(u^*, v^*, w^*)$  where a large part of the zonal mean components  $(\langle v \rangle, \langle w \rangle)$  is removed. The  $A_1$  term in Eq. (1) is modified accordingly. We obtain:

$$\begin{aligned}
 u^* &= u \\
 v^* &= v - \langle v \rangle \cdot f(\theta) \\
 w^* &= w - \langle w \rangle \cdot f(\theta) \\
 A_1^* &= A_1 \cdot (1 - f(\theta))
 \end{aligned} \tag{5}$$

Where  $f(\theta)$  is a function of the latitude  $\theta$  that varies from 1 at the equator to 0 near the poles where the zonal averages are defined by too few points. We chose  $f(\theta) = \cos(\theta)^8$  in order to essentially use the modified wind field for latitudes lower than  $50^\circ$ . It leads to some sort of a restricted implementation of the ozone parameterization where at each time step the divergence of the ozone fluxes from the zonal averaged meridional circulation is assumed to balance the same term evaluated from the 2D model. Figures 7 shows that the total ozone column distribution obtained with this method for the year 2001 gives more ozone at the equator and much less at mid and high latitudes in the northern hemisphere. It is in better agreement with both MOBIDIC outputs and the TOMS data. This demonstrates that the equator-to-pole meridional circulation given by the ECMWF analyses is larger than the corresponding circulation given by the ARPEGE-Climat model. It accounts for an overestimation of the ozone columns by 30 to 40 DU during the spring maximum at high NH latitudes. Less differences are observed in the SH.

The tendency for excessive equator to pole circulation intensity by the ECMWF

[Title Page](#)
[Abstract](#)
[Introduction](#)
[Conclusions](#)
[References](#)
[Tables](#)
[Figures](#)
[◀](#)
[▶](#)
[◀](#)
[▶](#)
[Back](#)
[Close](#)
[Full Screen / Esc](#)
[Printer-friendly Version](#)
[Interactive Discussion](#)

analyses has been already diagnosed by analysis of satellite and soundings ozone data (Latt et al., 2006), and with the calculation of stratospheric “age of air” (Bregman et al., 2006). Our calculations confirm this, at least for the period analysed here, and show that the problem mainly comes from the northern hemisphere.

### 5 3.3 Polar vortex variability and ozone distribution

The results described above show that the ozone parameterization v2a combined with the forcing by the ECMWF operational analyses is able to capture the large scale ozone distribution and its inter-annual variability. It is however important to check if the system can also reproduce in detail the time evolution of ozone during episodes presenting rapid change due to active dynamics or with activation of ozone destroying processes.

To explore this, we first focus on the comparison of the model results with TOMS data during the years 2001 and 2002 that presented a very different behaviour of the SH polar vortex and the associated ozone distribution. During 2001 the polar vortex has been mostly unperturbed for the whole winter-spring and the “ozone hole” built up progressively in September, and lasted until mid-November. Figure 8 shows the TOMS map for 15 September. At that date the ozone content is minimum inside the vortex, below 150 DU, and the vortex boundary marks the transition from undepleted to ozone depleted air masses. The model distribution for the same date (Fig. 9) shows very good agreement with the satellite data. The total ozone columns within the vortex are in the 140–180 DU range, and the belt of maxima at mid-latitudes is well reproduced in shape and intensity, with a slight overestimation of the ozone column by 20 DU. The ozone gradient at the edge of the vortex is under-evaluated, but this is due to the limited CTM horizontal resolution, about  $2.8^\circ$ , that cannot handle the sharp vortex boundaries.

One month later the same characteristics for the dynamics hold (Figs. 10 and 11), but there is a tendency for the model to produce a polar ozone minimum that “shrinks” too rapidly compared to TOMS data. The model resolution appears not to be the cause of this excessive ozone recovery in the centre of the vortex. It is rather due to the

---

**A linear ozone  
chemical scheme**

D. Cariolle and  
H. Teyssède

---

Title Page

Abstract

Introduction

Conclusions

References

Tables

Figures

◀

▶

◀

▶

Back

Close

Full Screen / Esc

Printer-friendly Version

Interactive Discussion

turn off of the ozone destruction by the heterogeneous term of the parameterization, consecutive to the warming of the air masses and their temperature rise above the 195 K threshold. In the next section we show that this shortcoming is improved by the version v2b of the parameterization that uses the cold tracer formulation.

5 Compared to 2001, during the winter–spring of 2002 the polar vortex was much more disturbed. It was elongated most of the time in August, and eventually split in two distinct vortices during the second half of September. This behaviour with such a large planetary wave 2 activity was very peculiar (Simmons et al., 2005) and the consequences on the distributions of minor species in the stratosphere have been reported in several studies (e.g. Ricaud et al., 2005). Figure 12 shows the TOMS map on September 25th with the two ozone minima associated to the split vortex. The model simulation on the same day (Fig. 13) compares again very well with the observation, the differences in the total ozone content being in the range of 20 DU. This illustrates how efficient the ozone parameterization is when forced by high quality atmospheric analyses. After more than 1.5 year of simulation the biases with the observations on the global scale are minimal, and the produced ozone distribution compares very favourably to the models using a detailed chemical scheme (Feng et al., 2006).

### 3.4 Cold tracer and mid and high latitude ozone destruction

In this last set of simulations the v2b ozone parameterization is implemented with the cold tracer as described in Sect. 2.2.2. The 5 year simulation is repeated and the analysis is focused on the year 2001 for the winter-spring seasons during which the polar temperature are low enough to form PSCs in both hemispheres.

Figure 14 shows the distribution at 50 hPa of the cold tracer at the beginning of October in the SH. As expected, the value of the tracer is close to 1 in the core of the vortex and strong tracer gradients mark the transition from processed to outer vortex unprocessed air masses. Despite that the vortex was not much disturbed during that period, tongues of vortex air are extracted to the midlatitudes. One of these is well marked in the south American sector, with tracer value in the range 0.05 to 0.15. An-

---

## A linear ozone chemical scheme

D. Cariolle and  
H. Teysse re

---

Title Page

Abstract

Introduction

Conclusions

References

Tables

Figures

◀

▶

◀

▶

Back

Close

Full Screen / Esc

Printer-friendly Version

Interactive Discussion

other one is also visible spanning from New-Zealand to South Africa with tracer values around 0.1. This means that in those sectors ozone depletion is possible at a rate 6 to 10 times slower than in the vortex core, provided that the temperature is cold enough (see Eq. (4)). This typical situation with slow erosion of the vortex holds until the final warming and the vortex breakdown.

The impact of using the v2b parameterization on the ozone distribution is twofold. First, at polar latitudes the ozone decrease in September–October is maintained for about 15 more days than when using the v2a formulation (Fig. 15). This is because the ozone depletion inside the vortex can last longer due to high values of the tracer and still cold enough temperature. As a result, the ozone minimum inside the vortex in October is about 20 DU lower using v2b than with v2a. As discussed in the previous section this brings the model simulations in better agreement with observations. In both formulations of the parameterization the ozone destruction by the PSC chemistry is activated as the sun comes back, as soon as the solar zenith angle is lower than  $90^\circ$ . To evaluate the influence of possible delay in the ozone destruction rate due to the large optical depths and progressive return of the UV flux one experiment was performed with activation of the ozone destruction for zenith angles lower than  $87^\circ$ . This influences the timing of ozone destruction in August, but not much the quasi steady state reached at the end of September and the subsequent evolution in October (see Fig. 15).

Examination of the vertical ozone profiles above the Neumayer station (Fig. 16) shows that the depleted ozone layer is distributed between 150 and 20 hPa. All the model simulations overestimate the ozone content in the layer 200–100 hPa, due to the excessive ozone transport from the midlatitudes prior to the ozone destruction, as discussed above. Compared to the soundings, the model simulations using v2b is in better agreement with observation, and is not sensitive to the choice of the zenith angle for activation of the heterogeneous chemistry.

The other noticeable impact on the ozone distribution is found at mid-latitudes in spring and summer. Due to the erosion of the vortex and the possible in-situ ozone destruction within extracted air masses, the southern ozone content is reduced by

**A linear ozone  
chemical scheme**D. Cariolle and  
H. Teysse re

Title Page

Abstract

Introduction

Conclusions

References

Tables

Figures

◀

▶

◀

▶

Back

Close

Full Screen / Esc

Printer-friendly Version

Interactive Discussion

about 20–25 DU from mid-August to November (not shown). This also brings the model simulation in better agreement with observations.

In the NH, the lower stratosphere vortex is more disturbed and warmer, so the distribution of the tracer shows excursions of air masses with high tracer values at lower latitudes, but with a lower covered area than in the SH (Fig. 17). Tongues of tracer air are also encountered but seem to mix more rapidly. The ozone depletion appears more variable in the NH than in the SH. It depends on the planetary wave activity during winter, the coldness of the air masses inside the vortex, and the date of the final warming. For the year 2001, which encountered a moderate wave activity at the beginning of the winter and a significant warming in mid-February, the ozone amount using v2b is reduced by about 20 DU beyond 60° N from the end of January to mid-March (Fig. 18). Thus, with the v2b formulation about half of the high-latitude ozone overestimation is removed. This result is not very sensitive to the value of the zenith angle chosen for activation of the heterogeneous ozone destruction.

## 4 Conclusions

We developed a new version, v2a, of the parameterization used in the original CD86 work. It includes the upgrade of the photochemical model which generated its coefficients, and the implementation of a scheme for the polar ozone destruction that takes into account the local stratospheric temperature and the total chlorine content. Forced by the ECMWF analyses, this version gives satisfactory results with little biases and drifts compared to the TOMS ozone data. It reproduces well the ozone inter-annual variability connected to the variations of the stratospheric temperature inside the vortices that modulate the rate of the polar ozone destruction.

The v2a version is now included in the last version of the ARPEGE-Climat model and, since February 2006, in the operational IFS model of the ECMWF. It is thus also used in the variational ozone assimilation system of the European center. The assimilation of ozone data allows additional validation of the parameterization, by the

### A linear ozone chemical scheme

D. Cariolle and  
H. Teysse re

Title Page

Abstract

Introduction

Conclusions

References

Tables

Figures

◀

▶

◀

▶

Back

Close

Full Screen / Esc

Printer-friendly Version

Interactive Discussion

systematic measure of the distances between the observations and the trajectory of the model. Our parameterization works correctly in this framework, as well as in the system developed by the British Meteorological Office and implemented by the DARC for an intercomparison exercise of simplified ozone schemes (Geer et al., 2006).

5 The version v2b which uses a cold tracer further improves the seasonal evolution of the stratospheric ozone. Notably, the ozone content at mid and high latitudes is reduced due to the increase of the occurrence of the conditions prevailing for ozone destruction, and the export of air masses with lowered ozone contents toward the mid-latitudes. In particular, in the southern hemisphere the ozone content inside the polar  
10 vortex in autumn is maintained in lower concentrations, in better agreement with the observations. This v2b version is likely to be a very good compromise if one wishes to improve the modelisation of the polar processes with an efficient scheme in terms of computing time, avoiding at the same time the introduction of complex heterogeneous atmospheric chemistry.

15 The two versions of the parametrization are, generally, more sensitive to the stratospheric temperatures than the CD86 version. This leads to an increased variability of the simulations, so it will be very interesting in the future to estimate their impact in longer simulations. For instance, the ARPEGE-Climat model can be integrated for several decades to evaluate the climatic impact of scenarios including the evolution of the concentration of greenhouse gases and the total stratospheric chlorine content, with a  
20 profile consistent with the protocols relative to the limitation of the atmospheric release of chlorofluorocarbons (WMO, 2003). Using the present parameterization should allow one to easily explore a wider range of scenarios, without directly implementing the still very expensive coupling between general circulation ocean/atmosphere coupled models and photochemical models.  
25

*Acknowledgements.* We thank D. Olivie and R. Paoli for helpful comments on the manuscript. This work was supported by the European Union FP6 Integrated Project QUANTIFY (<http://www.pa.op.dlr.de/quantify/>).

---

**A linear ozone  
chemical scheme**D. Cariolle and  
H. Teysse re

---

Title Page

Abstract

Introduction

Conclusions

References

Tables

Figures

◀

▶

◀

▶

Back

Close

Full Screen / Esc

Printer-friendly Version

Interactive Discussion

## References

- Andersson, E., Beljaars A., Bidlot J., Miller, M., Simmons, A., and Thepaut, J. N.: A major new cycle of the IFS: cycle 25R4, ECMWF Newsletter 97, ECMWF, Shinfield Park, Reading, Berkshire RG2, 9AX, UK, 2003.
- 5 Bregman B., Meijer, E., and Scheele, R.: Key aspects of stratospheric tracer modeling using assimilated winds, *Atmos. Chem. Phys.*, 6, 4529–4543, 2006,  
<http://www.atmos-chem-phys.net/6/4529/2006/>.
- Cariolle, D. and Brard, B.: The distribution of ozone and active stratospheric species: Result of a two-dimensional atmospheric model, in: *Atmospheric Ozone*, edited by: C. S. Zerefos and A. Ghazi, pp. 77–81, D. Reidel, higham, Mass, 1984.
- 10 Cariolle, D. and Déqué, M.: Southern hemisphere medium-scale waves and total ozone disturbances in a spectral general circulation model, *J. Geophys. Res.*, 91, 10 825–10 846, 1986.
- Cariolle, D., Lasserre-Bigory, A., and Royer, J. F.: A general circulation model simulation of the springtime antarctic ozone and its impact on mid-latitudes, *J. Geophys. Res.*, 95, 1883–1898, 1990.
- 15 Chipperfield, M.: Multiannual simulations with a three-dimensional chemical transport model, *J. Geophys. Res.*, 104, 1781–1805, 1999.
- Dethof, A. and Holm, E.: Ozone assimilation in the ERA-40 reanalysis project, *Q. J. R. Meteorol. Soc.*, 131, 2851–2872, 2004.
- 20 Déqué, M., Drevet, C., Braun, A., and Cariolle, D.: The ARPEGE/IFS atmosphere model: a contribution to the French community climate modelling, *Clim. Dynam.*, 10, 249–266, 1994.
- Dunkerton, T.: On the mean meridional mass motions of the stratosphere and mesosphere, *J. Atmos. Sci.*, 53, 2325–2333, 1978.
- Feng W., Chipperfield, M. P., Dorf, M., and Pfeilsticker, K.: Mid-latitude ozone changes: studies with a 3-D CTM forced by ERA-40 analyses, *Atmos. Chem. Phys. Discuss.*, 6, 6695–6722, 2006,  
<http://www.atmos-chem-phys-discuss.net/6/6695/2006/>.
- Fortuin, J. P. F. and Langematz, U.: An update on the global ozone climatology and on concurrent ozone and temperature trends, *Proceedings SPIE*, Vol. 2311, Atmospheric Sensing and Modeling, 207–216, 1994.
- 30 Geer, A. J., Lahoz, W. A., Jackson, D. R., Cariolle, D., and McCormack, J. P.: Evaluation of linear ozone photochemistry parameterizations in a stratosphere-troposphere data assimilation

---

### A linear ozone chemical scheme

D. Cariolle and  
H. Teysse re

---

Title Page

Abstract

Introduction

Conclusions

References

Tables

Figures

◀

▶

◀

▶

Back

Close

Full Screen / Esc

Printer-friendly Version

Interactive Discussion

---

**A linear ozone  
chemical scheme**D. Cariolle and  
H. Teyssède

---

Title Page

Abstract

Introduction

Conclusions

References

Tables

Figures

◀

▶

◀

▶

Back

Close

Full Screen / Esc

Printer-friendly Version

Interactive Discussion

system, *Atmos. Chem. Phys. Discuss.*, 6, 7427–7469, 2006.

Hadjinicolaou, P., Pyle, J. A., Chipperfield, M. P., and Kettleborough, J. A.: Effect of interannual meteorological variability on mid-latitude O-3, *Geophys. Res. Lett.*, 24, 2993–2996, 1997.

Josse, B., Simon, P., and Peuch, V.-H.: Radon global simulations with the multiscale chemistry and transport model MOCAGE, *Tellus*, 56B, 339–356, 2004.

Latt, A., Landgraf, J., Aben, I., Hasekamp, O., and Bregman, B.: Assimilated winds for global modelling: evaluation with space- and balloon-borne ozone observations, *J. Geophys. Res.*, in press, 2007.

Mahfouf, J.-F., Cariolle, D., Royer, J.-F., Geleyn, J.-F., and Timbal, B.: Response of the METEO-FRANCE climate model to changes in CO<sub>2</sub> and sea-surface temperature, *Clim. Dynam.*, 9, 345–362, 1994.

McCormack, J. P., Eckermann, S. D., Coy, L., Allen, D. R., Kim, Y.-J., Hogan, T., Lawrence, B., Stephens, A., Browell, E. V., Burris, J., McGee, T. and Trepte, C. R.: NOGAPS-ALPHA model simulations of stratospheric ozone during the SOLVE2 campaign, *Atmos. Chem. Phys.*, 4, 2401–2423, 2004,

<http://www.atmos-chem-phys.net/4/2401/2004/>.

McLinden, C., Olsen, S. C., Hannegan, B., Wild, O., Prather, M. J., and Sundet, J.: Stratospheric ozone in 3-D models: A simple chemistry and the cross-tropopause flux, *J. Geophys. Res.*, 105, 14 653–14 665, 2000.

Mengistu Tsidu, G., von Clarmann, T., Stiller, G. P., Hopfner, M., Fischer H., Glatthor, N., Grabowski, U., Kellmann, S., Kiefer, M., Linden, A., Milz, M., Steck, T., Wang, D.Y., Funke, B.: Stratospheric N<sub>2</sub>O<sub>5</sub> in the austral spring 2002 as retrieved from limb emission spectra recorded by the Michelson Interferometer for Passive Atmospheric Sounding (MIPAS), *J. Geophys. Res.*, 109, D18301, doi:10.1029/2004JD004856, 2004.

Morris, G. A., Gleason, J. F., Russell III, J. M., Schoeberl, M. R., and McCormick, M. P.: A comparison of HALOE V19 with SAGE II V6.00 ozone observations using mapping, *J. Geophys. Res.*, 107, D13, 4177, doi:10.1029/2004GL022131, 2002.

Oikonomou, E. K. and O'Neill, A. : Evaluation of ozone and water vapor fields from the ECMWF reanalysis ERA-40 during 1991–1999 in comparison with UARS satellite and MOZAIC aircraft observations, *J. Geophys. Res.*, 111, D14109, doi:10.1029/2004JD005341, 2006.

Prather, M. J. : Numerical advection by conservation of second order moments, *J. Geophys. Res.*, 91, 6671–6681, 1986.

Ricaud, P., Lefèvre, F., Berthet, G., Murtagh, D., Llewellyn, E. J., Mégie, G., Kyrölä, E., Lep-



- pelmeier, G. W., Auviven, H., Boone, C., Brohede, S., Degenstein, D. A., de la Noë, J., Dupuy, E., El Amraoui, L., Eriksson, P., Evans, W.F.J., Frisk, U., Gattinger, R.L., Girod, F., Haley, C. S., Hassinen, S., Hauchecorne, A., Jimenez, C., Kyrö, E., Lautié, N., Le Flochmoën, E., Lloyd, N. D., McConnell, J. C., McDade, I. C., Nordh, L., Olberg, M., Pazmino, A., Petelina, S.V., Sandqvist, A., Seppälä, A., Sioris, B.H., Solheim, B.H., Stegman, J., Strong, K., Taalas, P., Urban, J., von savigny, C., von Scheele, F., and Witt, G.: Polar vortex evolution during the 2002 Antarctic major warming as observed by the Odin satellite, *J. Geophys. Res.*, 110, D05302, doi:10.1029/2004JD005018, 2005.
- 5 Simmons, A. J., Hortal, M., Kelly, G., McNally, A., Untch, A., and Uppala, S.: ECMWF analyses and forecasts of stratospheric winter polar vortex breakup: September 2002 in the Southern Hemisphere and related events, *J. Atmos. Sci.*, 62, 668–689, 2005.
- 10 Solomon, S.: Stratospheric ozone depletion: A review of concepts and history, *Rev. Geophys.*, 37, 275–316, 1999.
- 15 WMO (World Meteorological Organization): Scientific Assessment of Ozone depletion: 2002, Global ozone Research and Monitoring Project – Report No. 47, 498 pp., Geneva, 2003.

---

**A linear ozone  
chemical scheme**

D. Cariolle and  
H. Teysse re

---

[Title Page](#)[Abstract](#)[Introduction](#)[Conclusions](#)[References](#)[Tables](#)[Figures](#)[I◀](#)[▶I](#)[◀](#)[▶](#)[Back](#)[Close](#)[Full Screen / Esc](#)[Printer-friendly Version](#)[Interactive Discussion](#)

## A linear ozone chemical scheme

D. Cariolle and  
H. Teysse re

Title Page

Abstract

Introduction

Conclusions

References

Tables

Figures

◀

▶

◀

▶

Back

Close

Full Screen / Esc

Printer-friendly Version

Interactive Discussion

**Table 1.** Main characteristics of the MOBIDIC model.

---

Long-lived advected species:

$O_x (=O + O_3)$ ,  $N_2O$ ,  $NO_y (=N + NO + NO_2 + NO_3)$ ,  $HNO_3$ ,  
 $N_2O_5$ ,  $HO_2NO_2$ ,  $CH_4$ ,  $CH_2O$ ,  $CO$ ,  $H_2$ ,  $H_2O$  (above 70 hPa),  
 $H_2O_2$ ,  $CCl_4$ , CFC–(11&12&113&114&115), HCFC–22,  
HCFC–22, HA–(1202&1211&1301),  $CH_3Cl$ ,  $CHCl_3$ ,  
 $CH_3Br$ ,  $CHBr_3$ ,  $CH_3CCl_3$ ,  $HCl$ ,  $ClONO_2$

---

Short-lived species:

$O(^3P)$ ,  $O(^1D)$ ,  $H$ ,  $OH$ ,  $HO_2$ ,  $CH_3$ ,  $CH_3O_2H$ ,  $CH_3O_2$ ,  
 $CH_3OH$ ,  $CH_3O$ ,  $CHO$ ,  $N$ ,  $NO$ ,  $NO_2$ ,  $NO_3$ ,  $Cl$ ,  $Cl_2$ ,  $ClO$ ,  $OCIO$ ,  
 $ClO_2$ ,  $Cl_2O_2$ ,  $HOCl$ ,  $ClNO_2$ ,  $Br$ ,  $Br_2$ ,  $BrO$ ,  $HBr$ ,  $HOBr$ ,  
 $BrONO_2$ ,  $BrCl$

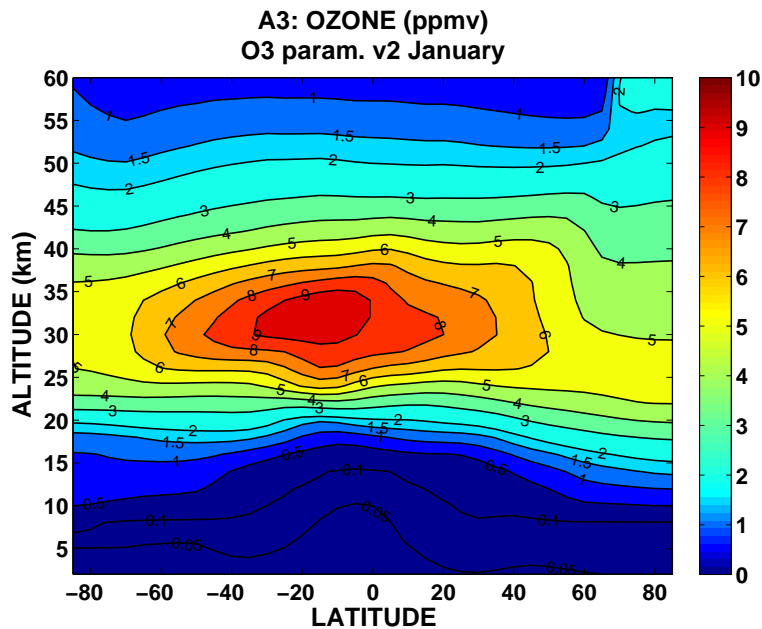
---

Model resolution:

60 vertical levels from ground to 0.1 hPa

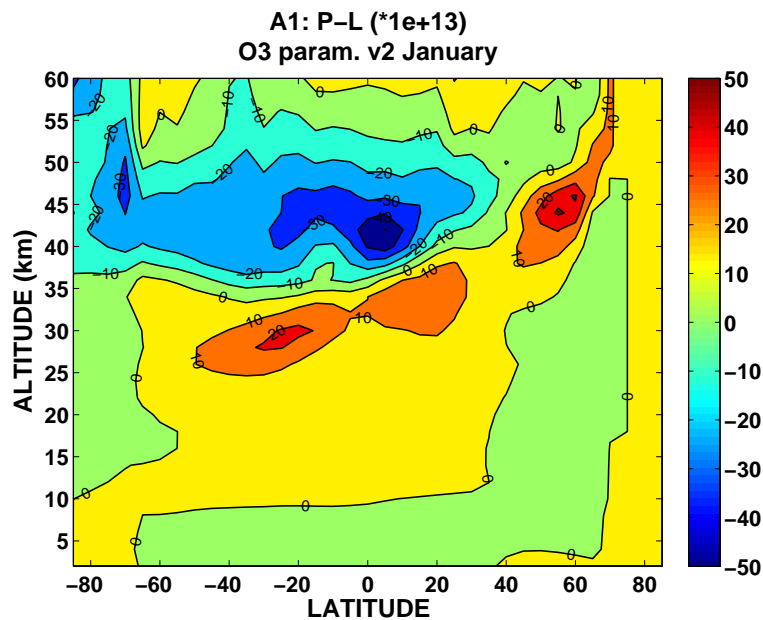
64 latitudes, about 2.8° latitudinal resolution

---

**A linear ozone  
chemical scheme**D. Cariolle and  
H. Teysse re

**Fig. 1.** Ozone background distribution (ppmv) as a function of altitude and latitude for the month of January.

[Title Page](#)[Abstract](#)[Introduction](#)[Conclusions](#)[References](#)[Tables](#)[Figures](#)[◀](#)[▶](#)[◀](#)[▶](#)[Back](#)[Close](#)[Full Screen / Esc](#)[Printer-friendly Version](#)[Interactive Discussion](#)

**A linear ozone  
chemical scheme**D. Cariolle and  
H. Teysse re

**Fig. 2.** Net photochemical rate ( $10^{-7}$  ppmv  $s^{-1}$ ) as a function of altitude and latitude for the month of January.

Title Page

Abstract

Introduction

Conclusions

References

Tables

Figures

◀

▶

◀

▶

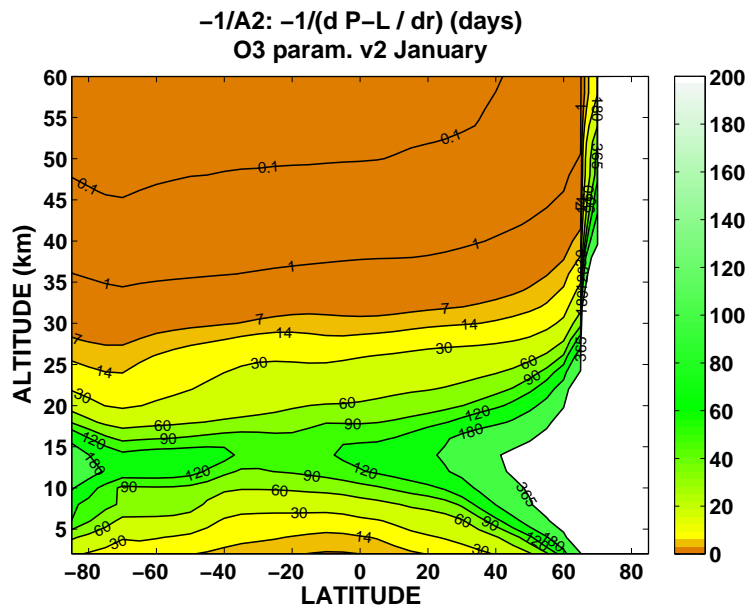
Back

Close

Full Screen / Esc

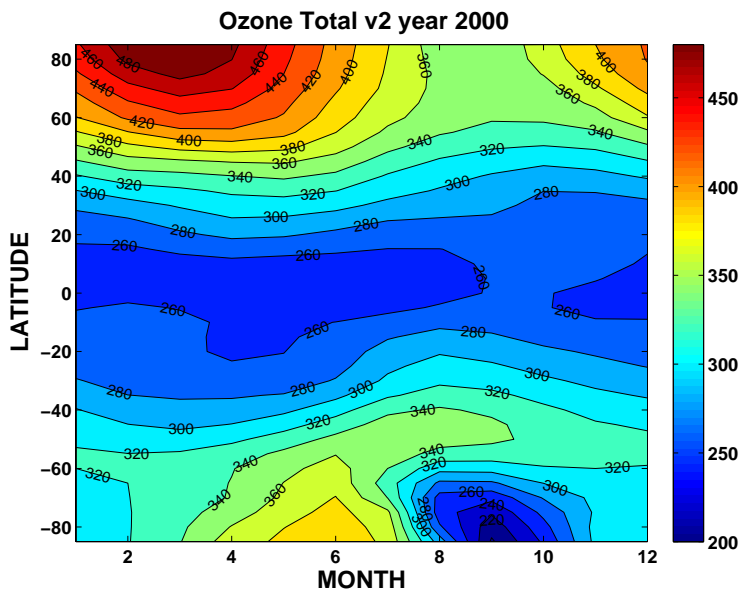
Printer-friendly Version

Interactive Discussion

**A linear ozone  
chemical scheme**D. Cariolle and  
H. Teysse re

**Fig. 3.** Photochemical relaxation time (days) as a function of altitude and latitude for the month of January.

[Title Page](#)[Abstract](#)[Introduction](#)[Conclusions](#)[References](#)[Tables](#)[Figures](#)[◀](#)[▶](#)[◀](#)[▶](#)[Back](#)[Close](#)[Full Screen / Esc](#)[Printer-friendly Version](#)[Interactive Discussion](#)

**A linear ozone  
chemical scheme**D. Cariolle and  
H. Teysse re

**Fig. 4.** Total ozone column from the MOBIDIC model generating the v2a of the ozone linear scheme.

Title Page

Abstract

Introduction

Conclusions

References

Tables

Figures

◀

▶

◀

▶

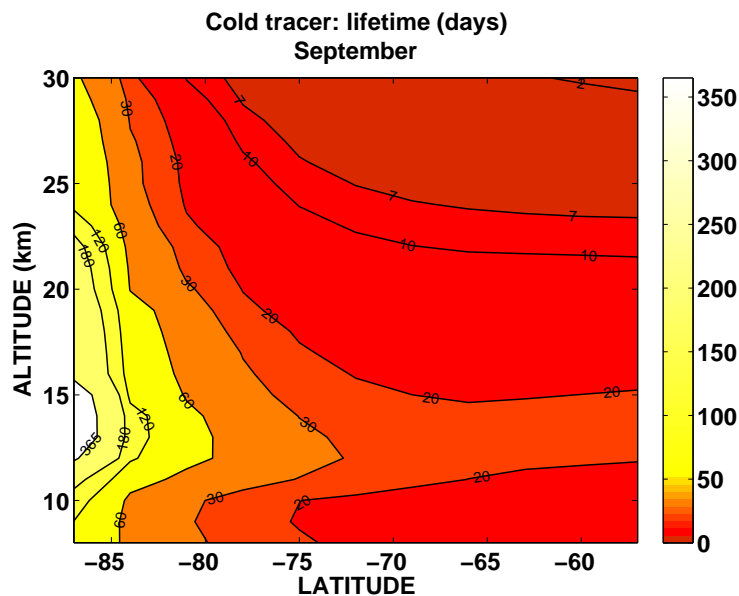
Back

Close

Full Screen / Esc

Printer-friendly Version

Interactive Discussion

**A linear ozone  
chemical scheme**D. Cariolle and  
H. Teysse re

**Fig. 5.** Chemical lifetime for  $\text{HNO}_3$  in September. This lifetime is used to compute the decay rate of the concentration of the cold tracer (see Sect. 2).

Title Page

Abstract

Introduction

Conclusions

References

Tables

Figures

◀

▶

◀

▶

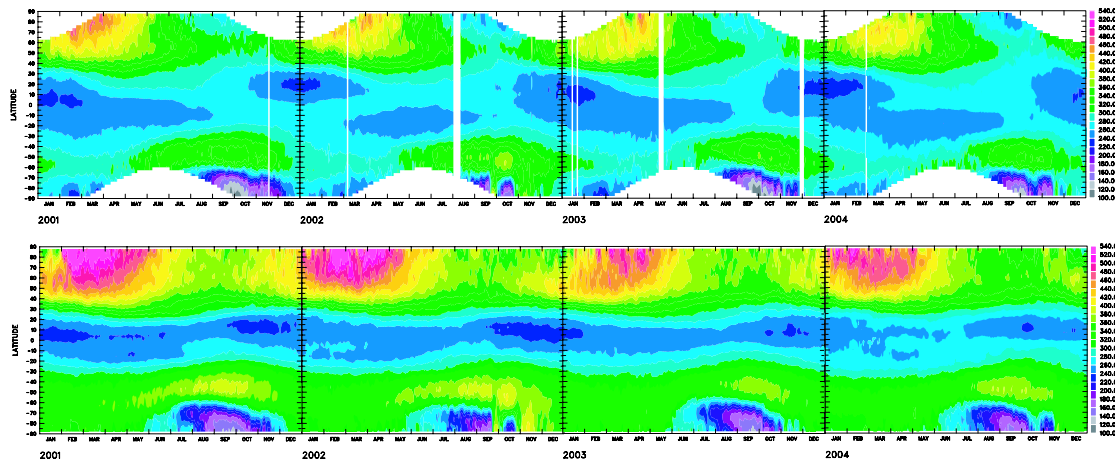
Back

Close

Full Screen / Esc

Printer-friendly Version

Interactive Discussion

**A linear ozone  
chemical scheme**D. Cariolle and  
H. Teysse re

**Fig. 6.** Total ozone distributions as a function of latitude and time over the period 2001–2004. Upper panel: TOMS data; lower panel: MOCAGE results using the v2a parameterization.

Title Page

Abstract

Introduction

Conclusions

References

Tables

Figures

◀

▶

◀

▶

Back

Close

Full Screen / Esc

Printer-friendly Version

Interactive Discussion



**A linear ozone  
chemical scheme**D. Cariolle and  
H. Teysse re

Title Page

Abstract

Introduction

Conclusions

References

Tables

Figures

◀

▶

◀

▶

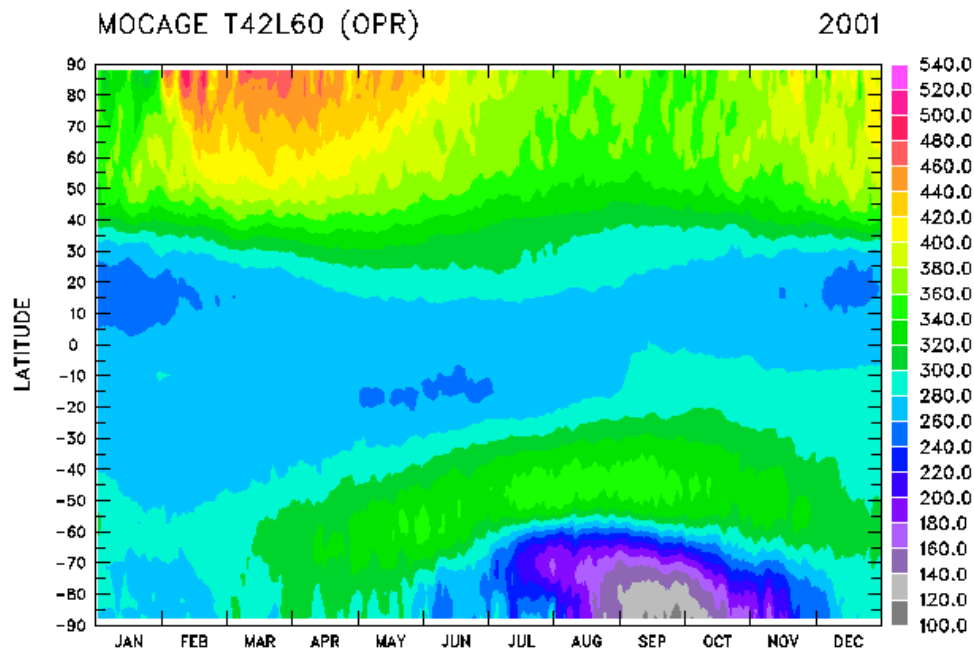
Back

Close

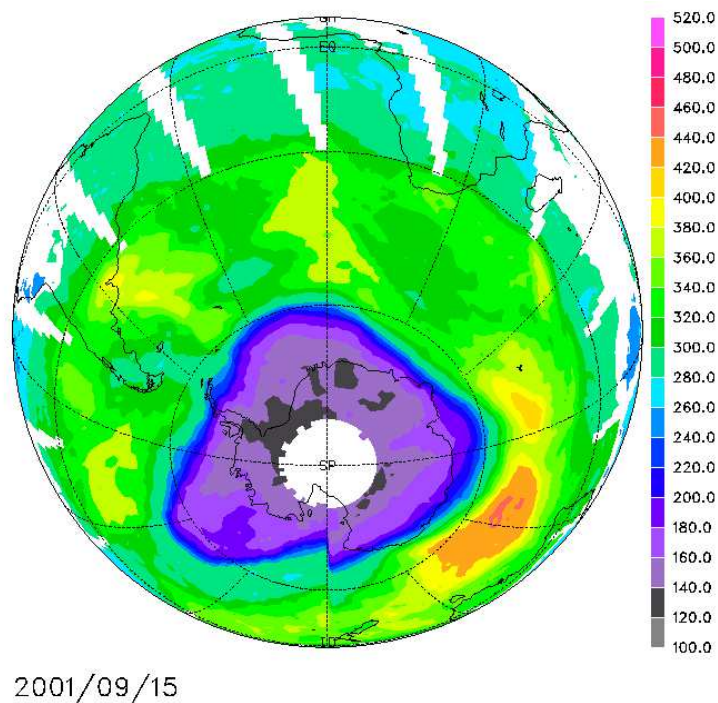
Full Screen / Esc

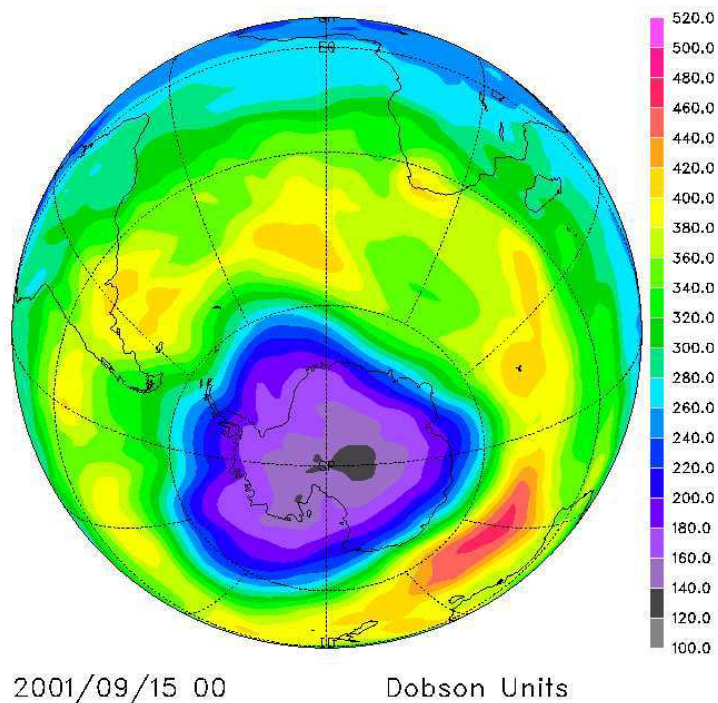
Printer-friendly Version

Interactive Discussion



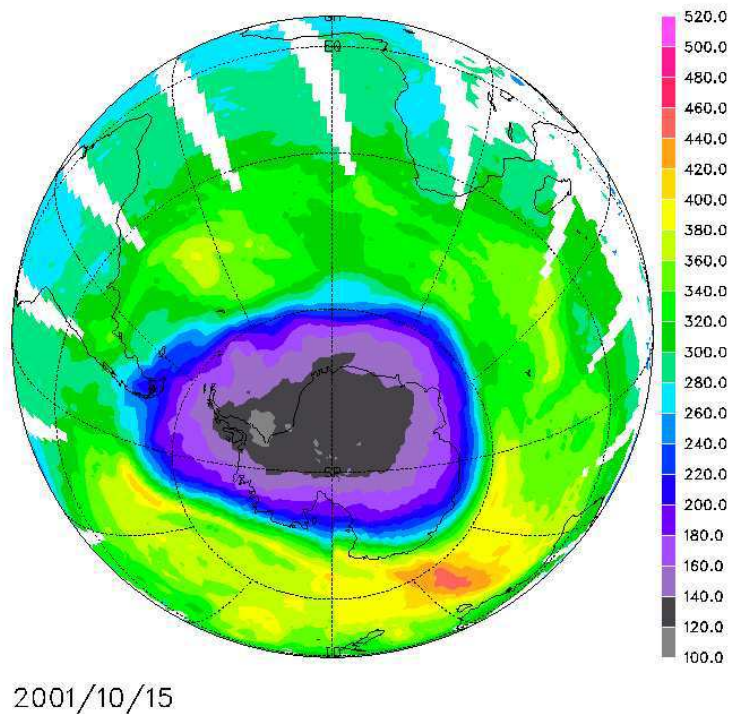
**Fig. 7.** Total ozone distributions as a function of latitude and time for the year 2001 produced by using the “restricted” implementation of the v2a parameterization (see Sect. 3.2).

**A linear ozone  
chemical scheme**D. Cariolle and  
H. Teysse re**Fig. 8.** Total ozone column for 15 September of 2001 from the TOMS data.[Title Page](#)[Abstract](#)[Introduction](#)[Conclusions](#)[References](#)[Tables](#)[Figures](#)[◀](#)[▶](#)[◀](#)[▶](#)[Back](#)[Close](#)[Full Screen / Esc](#)[Printer-friendly Version](#)[Interactive Discussion](#)

**A linear ozone  
chemical scheme**D. Cariolle and  
H. Teysse re

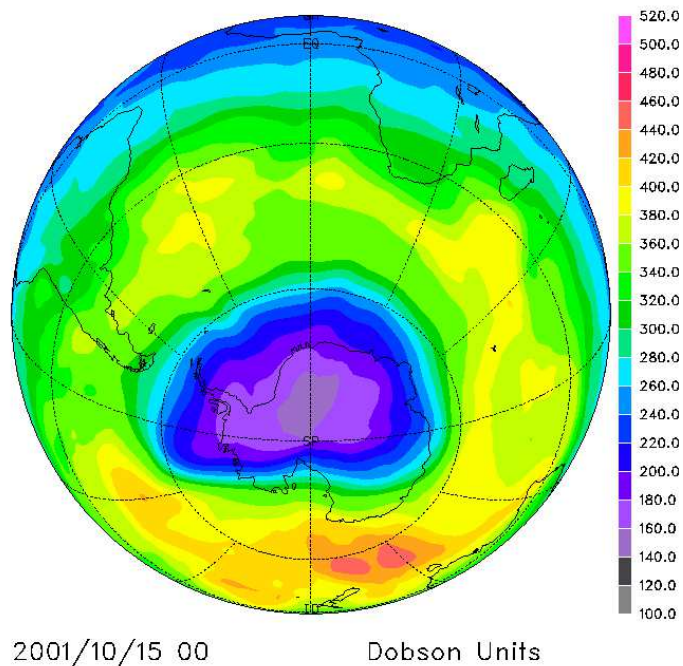
**Fig. 9.** Total ozone column for 15 September of 2001 from the MOCAGE simulation using v2.a parameterization.

[Title Page](#)[Abstract](#)[Introduction](#)[Conclusions](#)[References](#)[Tables](#)[Figures](#)[◀](#)[▶](#)[◀](#)[▶](#)[Back](#)[Close](#)[Full Screen / Esc](#)[Printer-friendly Version](#)[Interactive Discussion](#)

**A linear ozone  
chemical scheme**D. Cariolle and  
H. Teysse re

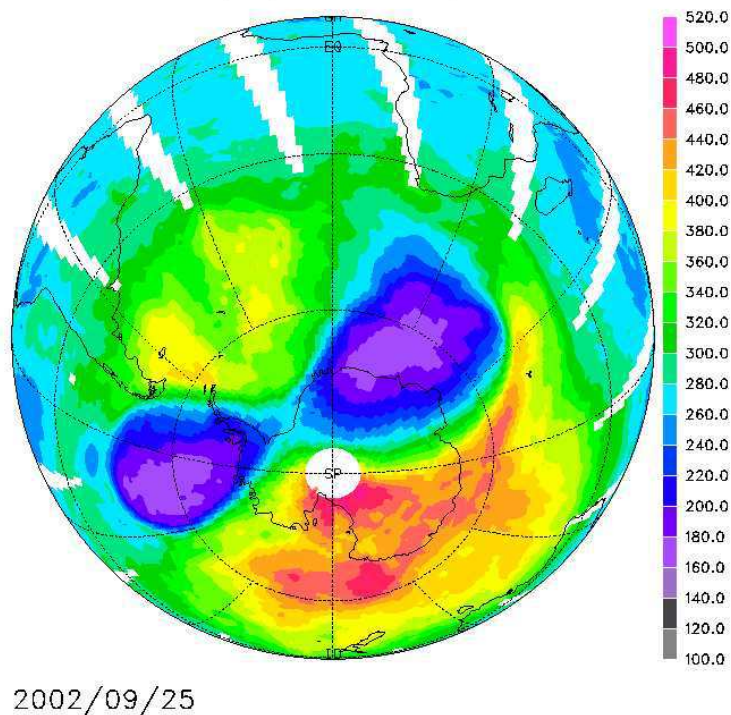
**Fig. 10.** Total ozone column for 15 October of 2001 from the TOMS data.

[Title Page](#)[Abstract](#)[Introduction](#)[Conclusions](#)[References](#)[Tables](#)[Figures](#)[◀](#)[▶](#)[◀](#)[▶](#)[Back](#)[Close](#)[Full Screen / Esc](#)[Printer-friendly Version](#)[Interactive Discussion](#)

**A linear ozone  
chemical scheme**D. Cariolle and  
H. Teysse re

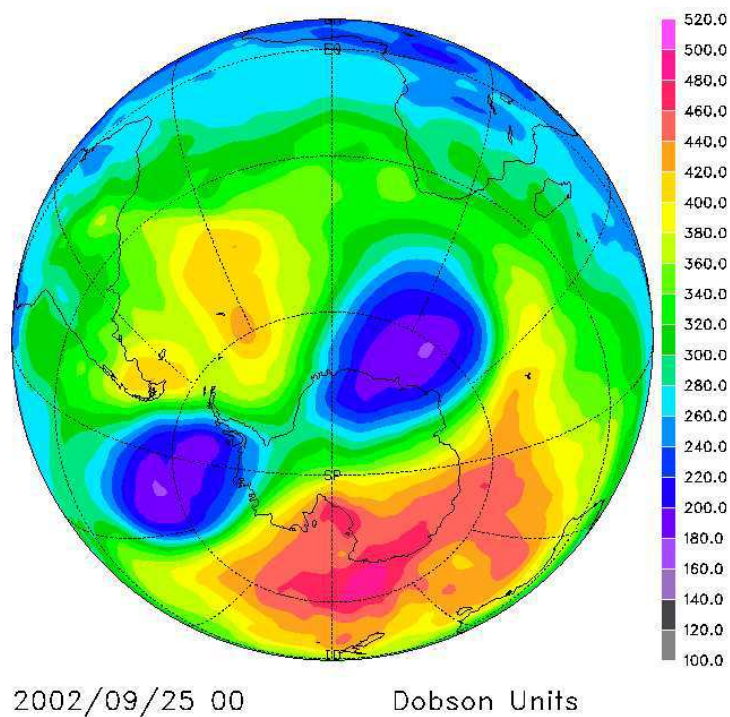
**Fig. 11.** Total ozone column for 15 October of 2001 from the MOCAGE simulation using v2.a parameterization.

[Title Page](#)[Abstract](#)[Introduction](#)[Conclusions](#)[References](#)[Tables](#)[Figures](#)[◀](#)[▶](#)[◀](#)[▶](#)[Back](#)[Close](#)[Full Screen / Esc](#)[Printer-friendly Version](#)[Interactive Discussion](#)

**A linear ozone  
chemical scheme**D. Cariolle and  
H. Teysse re

**Fig. 12.** Total ozone column for 25 September of 2002 from the TOMS data.

[Title Page](#)[Abstract](#)[Introduction](#)[Conclusions](#)[References](#)[Tables](#)[Figures](#)[◀](#)[▶](#)[◀](#)[▶](#)[Back](#)[Close](#)[Full Screen / Esc](#)[Printer-friendly Version](#)[Interactive Discussion](#)

**A linear ozone  
chemical scheme**D. Cariolle and  
H. Teysse re

**Fig. 13.** Total ozone column for 25 September of 2002 from the MOCAGE simulation using v2.a parameterization.

Title Page

Abstract

Introduction

Conclusions

References

Tables

Figures

◀

▶

◀

▶

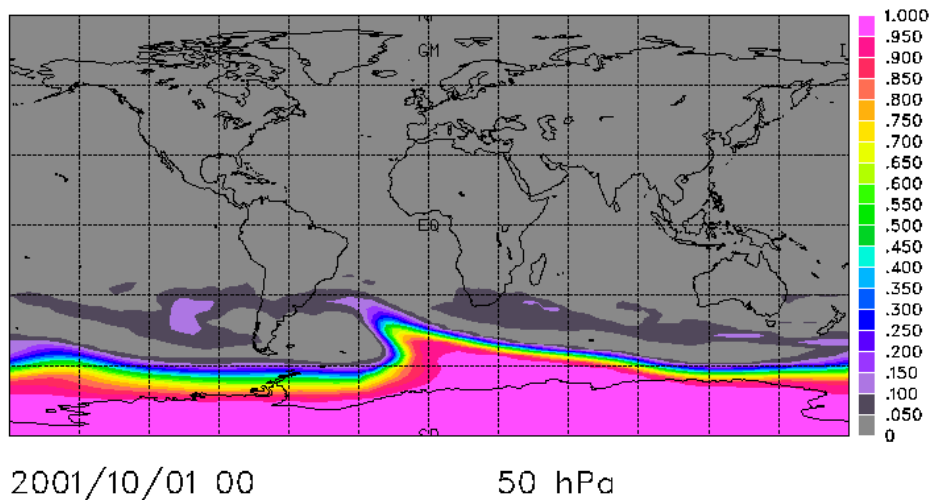
Back

Close

Full Screen / Esc

Printer-friendly Version

Interactive Discussion

**A linear ozone  
chemical scheme**D. Cariolle and  
H. Teysse re

**Fig. 14.** Distribution of the cold tracer mixing ratio for the 1 October 2001.

Title Page

Abstract

Introduction

Conclusions

References

Tables

Figures

◀

▶

◀

▶

Back

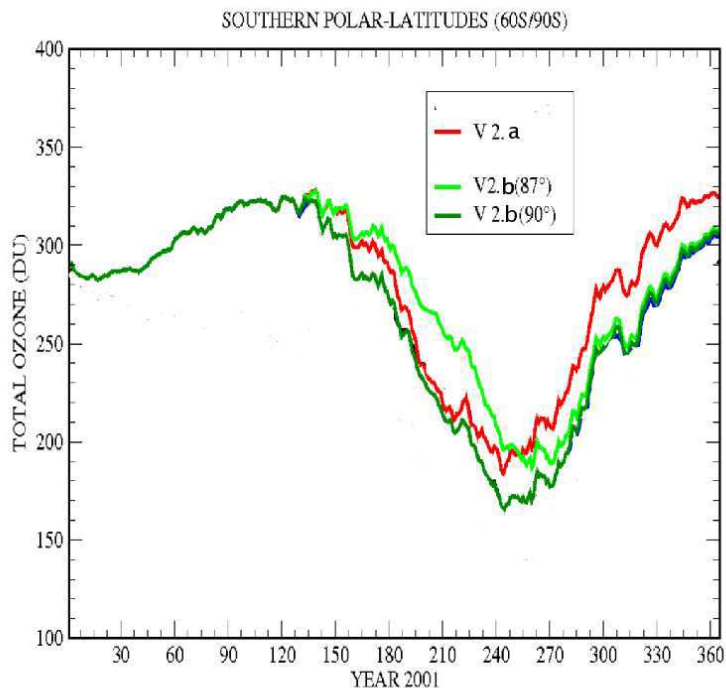
Close

Full Screen / Esc

Printer-friendly Version

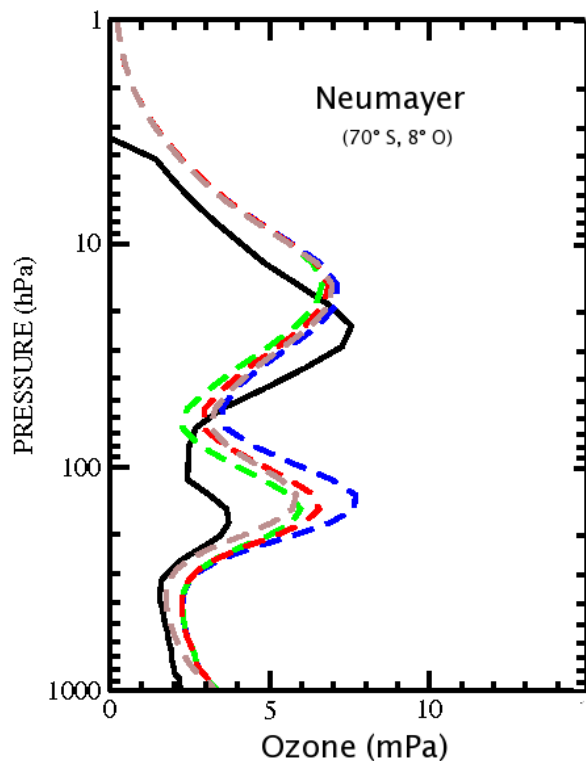
Interactive Discussion



**A linear ozone  
chemical scheme**D. Cariolle and  
H. Teysse re

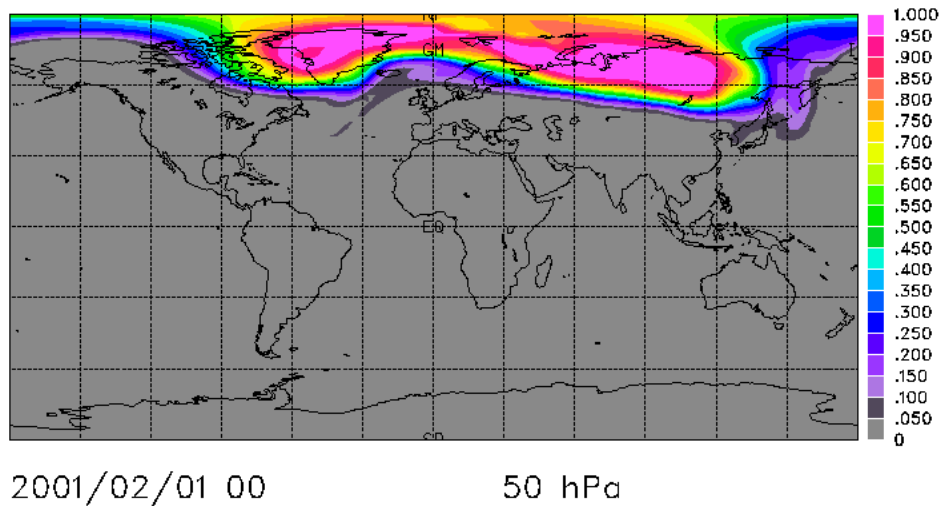
**Fig. 15.** Evolution of the total ozone columns averaged over the 60–90 S latitude band for different configurations of the ozone parameterization (red: v2a, green: v2b).

[Title Page](#)[Abstract](#)[Introduction](#)[Conclusions](#)[References](#)[Tables](#)[Figures](#)[◀](#)[▶](#)[◀](#)[▶](#)[Back](#)[Close](#)[Full Screen / Esc](#)[Printer-friendly Version](#)[Interactive Discussion](#)

**A linear ozone  
chemical scheme**D. Cariolle and  
H. Teyssède

**Fig. 16.** Ozone vertical profiles over the station of Neumayer. The profiles are averaged over September–October for the soundings (black), the model simulations using v2a (blue), “restricted v2a (brown), and v2b (green and red for activation of polar ozone destruction for SZA larger than  $90^\circ$  and  $87^\circ$  respectively).

[Title Page](#)[Abstract](#)[Introduction](#)[Conclusions](#)[References](#)[Tables](#)[Figures](#)[◀](#)[▶](#)[◀](#)[▶](#)[Back](#)[Close](#)[Full Screen / Esc](#)[Printer-friendly Version](#)[Interactive Discussion](#)

**A linear ozone  
chemical scheme**D. Cariolle and  
H. Teysse re**Fig. 17.** Distribution of the cold tracer for the 1 February 2001.

Title Page

Abstract

Introduction

Conclusions

References

Tables

Figures

◀

▶

◀

▶

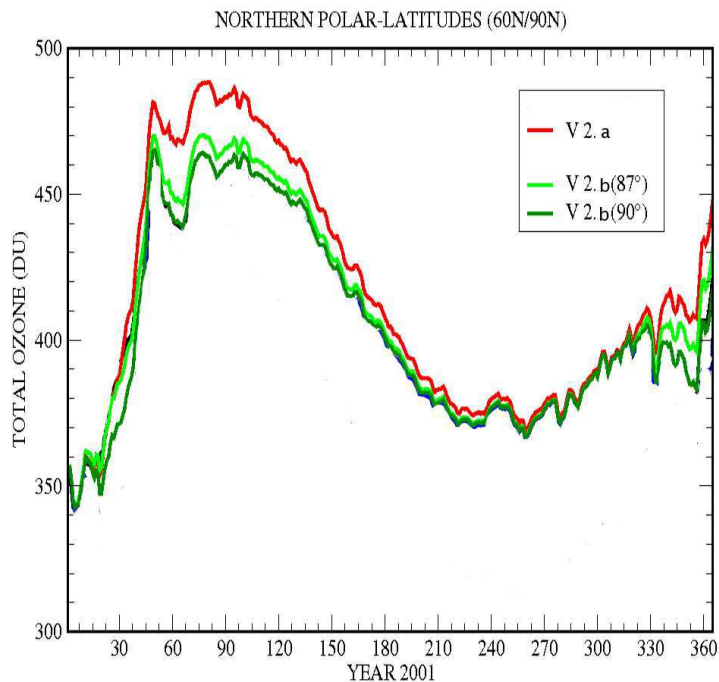
Back

Close

Full Screen / Esc

Printer-friendly Version

Interactive Discussion

**A linear ozone  
chemical scheme**D. Cariolle and  
H. Teysse re

**Fig. 18.** Evolution of the total ozone columns averaged over the 60–90 N latitude band for different configurations of the ozone parameterization (red: v2a, green: v2b).

[Title Page](#)[Abstract](#)[Introduction](#)[Conclusions](#)[References](#)[Tables](#)[Figures](#)[◀](#)[▶](#)[◀](#)[▶](#)[Back](#)[Close](#)[Full Screen / Esc](#)[Printer-friendly Version](#)[Interactive Discussion](#)