



HAL
open science

Constraining the total aerosol indirect effect in the LMDZ and ECHAM4 GCMs using MODIS satellite data

J. Quaas, O. Boucher, U. Lohmann

► **To cite this version:**

J. Quaas, O. Boucher, U. Lohmann. Constraining the total aerosol indirect effect in the LMDZ and ECHAM4 GCMs using MODIS satellite data. *Atmospheric Chemistry and Physics Discussions*, 2005, 5 (5), pp.9669-9690. <hal-00327977>

HAL Id: hal-00327977

<https://hal.science/hal-00327977v1>

Submitted on 18 Jun 2008

HAL is a multi-disciplinary open access archive for the deposit and dissemination of scientific research documents, whether they are published or not. The documents may come from teaching and research institutions in France or abroad, or from public or private research centers.

L'archive ouverte pluridisciplinaire **HAL**, est destinée au dépôt et à la diffusion de documents scientifiques de niveau recherche, publiés ou non, émanant des établissements d'enseignement et de recherche français ou étrangers, des laboratoires publics ou privés.



HAL Authorization

**Constraining the
aerosol indirect effect**

J. Quaas et al.

Constraining the total aerosol indirect effect in the LMDZ and ECHAM4 GCMs using MODIS satellite data

J. Quaas^{1,3}, O. Boucher^{2,3}, and U. Lohmann⁴

¹Max Planck Institute for Meteorology, Hamburg, Germany

²Laboratoire d'Optique Atmosphérique, CNRS/Université des Sciences et Technologies de Lille, Villeneuve d'Ascq, France

³Hadley Centre, Met Office, Exeter, UK

⁴Institute for Atmospheric and Climate Science, ETH Zurich, Switzerland

Received: 5 August 2005 – Accepted: 20 September 2005 – Published: 7 October 2005

Correspondence to: J. Quaas (quaas@dkrz.de)

© 2005 Author(s). This work is licensed under a Creative Commons License.

Title Page

Abstract

Introduction

Conclusions

References

Tables

Figures

◀

▶

◀

▶

Back

Close

Full Screen / Esc

Print Version

Interactive Discussion

EGU

Abstract

Aerosol indirect effects are considered to be the most uncertain yet important anthropogenic forcing of climate change. The goal of the present study is to reduce this uncertainty by constraining two different general circulation models (LMDZ and ECHAM4) with satellite data. We build a statistical relationship between cloud droplet number concentration and the optical depth of the fine aerosol mode as a measure of the aerosol indirect effect using MODerate Resolution Imaging Spectroradiometer (MODIS) satellite data, and constrain the model parameterizations to match this relationship. We include here “empirical” formulations for the cloud albedo effect as well as parameterizations of the cloud lifetime effect. When fitting the model parameterizations to the satellite data, consistently in both models, the radiative forcing by the combined aerosol indirect effect is reduced considerably, down to -0.5 and -0.3 Wm^{-2} , for LMDZ and ECHAM4, respectively.

1. Introduction

Anthropogenic aerosols are estimated to cause the second most important anthropogenic forcing of climate change after the greenhouse gases (Ramaswamy et al., 2001). Of particular importance is the fact that aerosols may serve as cloud condensation nuclei (CCN). Increased aerosol concentrations may thus increase cloud droplet number concentration (CDNC), enhancing the cloud albedo (Twomey, 1974), and enhancing cloud lifetime and liquid water content by lowering the collision/coalescence rate (Albrecht, 1989). These so-called “indirect effects” of aerosols on liquid water clouds are referred to as the cloud albedo or first indirect effect and the cloud lifetime or second indirect effect.

The radiative forcing due to these aerosol indirect effects (AIE), defined as the perturbation of the short-wave net radiative flux at the top of the atmosphere, is still highly uncertain. Some years ago, the possible range was estimated to be -2 – 0 Wm^{-2} for the

Constraining the aerosol indirect effect

J. Quaas et al.

Title Page

Abstract

Introduction

Conclusions

References

Tables

Figures

◀

▶

◀

▶

Back

Close

Full Screen / Esc

Print Version

Interactive Discussion

**Constraining the
aerosol indirect effect**J. Quaas et al.

[Title Page](#)[Abstract](#)[Introduction](#)[Conclusions](#)[References](#)[Tables](#)[Figures](#)[◀](#)[▶](#)[◀](#)[▶](#)[Back](#)[Close](#)[Full Screen / Esc](#)[Print Version](#)[Interactive Discussion](#)

EGU

cloud albedo effect (Boucher and Haywood, 2001). A recent review of current model-based estimates yields values between -1.9 and -0.5 Wm^{-2} for the cloud albedo effect, and between -1.4 and -0.3 Wm^{-2} for the cloud lifetime effect (Lohmann and Feichter, 2005). However, studies comparing forward and inverse simulations of global climate change suggest that the magnitude of the AIE given by this range is inconsistent with values obtained from inverse studies trying to infer aerosol forcing and climate sensitivity from the climate records (Anderson et al., 2003). This is confirmed by studies constraining aerosol indirect effects using satellite-derived relationships of cloud-top droplet effective radius and aerosol concentration, which reduces the associated radiative forcing by roughly a factor of two for the cloud albedo effect (Quaas and Boucher, 2005) and for the total aerosol indirect effect (Lohmann and Lesins, 2002). From POLarization and Directionality of the Earth's Reflectances (POLDER) satellite data alone, assuming a certain increase in global-mean aerosol concentration, Sekiguchi et al. (2003) derive a radiative forcing by the cloud albedo effect in the range of -0.4 to -0.1 Wm^{-2} using different methods. These studies use statistical relationships between satellite-derived cloud-top droplet effective radius (CDR) and aerosol concentration measured in terms of the POLDER “aerosol index” (AI; Bréon et al., 2002; Quaas et al., 2004), where the magnitude of the aerosol indirect effect may be measured as the slope of this relationship (e.g., Feingold et al., 2003). As for the cloud lifetime effect, a recent modelling study also suggests a radiative forcing much smaller than previously estimated (Rotstajn and Liu, 2005).

It has been argued that when taking the second aerosol indirect effect into account, the CDR-AI relationship may represent the joint influence of the cloud albedo and cloud lifetime effects, as the former leads to a decrease in CDR with increasing aerosol concentration (through increasing CDNC), while the latter could lead to an increase in CDR (through increasing cloud water content; Quaas et al., 2004). In the present study, thus, we opt for a different measure of the aerosol indirect effect, which is the relationship between CDNC and aerosol concentration. CDNC has the advantage to be independent of the cloud liquid water content. The CDNC to fine-mode aerosol op-

tical depth (AODFM) relationship is then established from satellite data, and the model parameterizations are adjusted to produce the same relationship.

2. Method

The tools used in this study are satellite data from the MODerate Resolution Imaging Spectroradiometer (MODIS) and the two general circulation models (GCMs) of the Laboratoire de Météorologie Dynamique (LMD-Z), and the Max Planck Institute for Meteorology (ECHAM4).

We are using data from the MODIS instrument on board the Terra satellite for a five-year period between March 2000 and February 2005. Aerosol optical depth is derived at 550 nm (Remer et al., 2005), as well as the fraction of fine particles (yielding the fine-mode aerosol optical depth, AODFM). We use the data derived over oceans only because of their better accuracy. It is recognized, indeed, that the AODFM is not reliable over land (Y. Kaufman, personal communication). Cloud droplet effective radius and cloud optical depth in the solar spectrum (COD) are derived in the 2.1 μm channel assuming plane-parallel homogeneous clouds above a black surface in combination with a non-absorbing channel at 0.86 μm (Platnick et al., 2003). We calculate the cloud droplet number concentration from retrieved, quality-assured CDR and COD assuming adiabatic clouds as proposed by Brenguier et al. (2000) and Schüller et al. (2005). The assumption implies adiabatically ascending air parcels within a cloud with a constant cloud droplet number concentration in the vertical, while liquid water content and thus cloud droplet radius increase monotonically. Hence, the cloud droplet number concentration can be expressed in terms of the cloud-top droplet effective radius, r_e , and the visible cloud optical depth, τ_c , as:

$$N_d = \alpha \tau_c^{0.5} r_e^{-2.5} \quad (1)$$

N_d in the above equation is derived from the combination of Eqs. (10) and (13) of Brenguier et al. (2000), with the coefficient $\alpha = 1.37 \cdot 10^{-5} \text{ m}^{-0.5}$ derived from the constants

Constraining the aerosol indirect effect

J. Quaas et al.

Title Page

Abstract

Introduction

Conclusions

References

Tables

Figures

◀

▶

◀

▶

Back

Close

Full Screen / Esc

Print Version

Interactive Discussion

**Constraining the
aerosol indirect effect**

J. Quaas et al.

Title Page

Abstract

Introduction

Conclusions

References

Tables

Figures

◀

▶

◀

▶

Back

Close

Full Screen / Esc

Print Version

Interactive Discussion

EGU

given in their study. To compute CDNC from MODIS retrievals of COD and CDR, we choose only those data pixels, where the retrieval is the most reliable (in the interval $4\ \mu\text{m} \leq r_e \leq 30\ \mu\text{m}$ and $4 \leq \tau_c \leq 70$; Nakajima and King, 1990), and where the grid-box mean cloud top temperature is larger than 273 K to assure that only liquid water clouds are considered. We compute CDNC from the joint histograms of COD and CDR at a $1^\circ \times 1^\circ$ horizontal and daily temporal resolution. The annual mean distribution is shown in Fig. 1a. As expected, CDNC is larger over continents than over oceans. Limited reliability of MODIS retrievals at very high latitudes and over deserts may imply that the very large CDNC over these regions are unrealistic. Generally, CDNC is larger over the northern than over the southern hemisphere. Over oceans, it is largest in coastal zones, particularly in the lee of the northern hemisphere continents. Over oceans, a marked meridional gradient is found with larger CDNC over high latitudes than over the tropics. The CDNC distribution corresponds well to the distribution of the AODFM (Fig. 1b), except for large AODFM at low latitudes, where CDNC is low. Supposedly, industrial pollution aerosols near the northern hemisphere coasts contribute to AODFM, and by acting as CCN, they increase CDNC in these regions. Due to their abundance over deserts, dust aerosols contribute largely to low-latitude AODFM but because they are less numerous and less hygroscopic, they result in less CCN.

The distribution of the CDNC derived here can be compared to the column-CDNC (CCDNC) as derived by Han et al. (1998) from AVHRR data. These authors define the CCDNC, denoted N_c , as the product of cloud geometrical thickness and CDNC, and compute it from the retrieved CDR and COD as $N_c = \beta \tau_c r_e^{-2}$ with $\beta = 0.32\ \text{m}^{-1}$. The same relation but with $\beta = 0.33\ \text{m}^{-1}$ is found when computing the product of CDNC and cloud geometrical thickness using the adiabatic assumption and the parameters given by Brenguier et al. (2000). The distributions of CDNC as derived here from MODIS data and CCDNC of Han et al. (1998) show very similar features, including the meridional gradient. Interestingly, even though CCDNC includes the effect that high-latitudes clouds typically have smaller geometrical thickness, the meridional gradient is found for both CDNC and CCDNC.

**Constraining the
aerosol indirect effect**

J. Quaas et al.

Title Page

Abstract

Introduction

Conclusions

References

Tables

Figures

◀

▶

◀

▶

Back

Close

Full Screen / Esc

Print Version

Interactive Discussion

EGU

When comparing the data to the GCMs, we use a daily temporal resolution, and we regrid the satellite data to the coarser horizontal resolution of the GCMs before deriving the AODFM to CDNC relationships. Due to the lack of reliable AODFM retrievals over land, only ocean grid points are taken.

5 2.1. The LMDZ GCM

We use the Laboratoire de Météorologie Dynamique (LMD-Z3.3) GCM (Li, 1999) in a resolution of 96×72 grid-points horizontally with 19 vertical layers. We apply the warm cloud microphysical scheme of Boucher et al. (1995) which parameterizes the impact of droplet size on precipitation formation in the autoconversion scheme. A multi-component aerosol model calculates interactively the cycles of sulphate aerosols (Boucher et al., 2002), organic and black carbon, dust, and sea salt (Reddy et al., 2005). Emissions are from the AEROCOM project (<http://nansen.ipsl.jussieu.fr/AEROCOM>). To diagnose cloud droplet number concentration we use the “empirical” formula of Boucher and Lohmann (1995, hereafter BL95):

15
$$N_d = \exp(a_0 + a_1 \ln m_{\text{aer}}) \quad (2)$$

where m_{aer} is the aerosol mass concentration in $\mu\text{g m}^{-3}$ (taken here as the total mass of all potential cloud condensation nuclei) and a_0 and a_1 are parameters ($a_0=5.1$ and $a_1=0.41$ for the formula “D” of BL95 used in our control simulation), which have been derived by compiling several in-situ measurement studies in the North Atlantic region. Simulations are done for three years using observed sea surface temperature (SST) and sea ice distributions.

2.2. The ECHAM4 GCM

The ECHAM4 GCM (Roeckner et al., 1996) used in this study is described in Lohmann and Lesins (2002). Prognostic aerosol variables are the mass mixing ratios of sulphate, methanesulphonate, hydrophilic and hydrophobic organic carbon, hydrophilic and hy-

**Constraining the
aerosol indirect effect**

 J. Quaas et al.

[Title Page](#)
[Abstract](#)
[Introduction](#)
[Conclusions](#)
[References](#)
[Tables](#)
[Figures](#)
[I◀](#)
[▶I](#)
[◀](#)
[▶](#)
[Back](#)
[Close](#)
[Full Screen / Esc](#)
[Print Version](#)
[Interactive Discussion](#)

EGU

drophobic black carbon, sub- and supermicron dust, and sub- and supermicron sea salt. Transport, dry and wet deposition, and chemical transformations of the aerosols and gaseous precursors are calculated on-line with the GCM (Feichter et al., 1996). The emissions for the different species are as in Lohmann et al. (2000). The total number concentration of hydrophilic aerosols, which is used for cloud droplet activation at cloud base, is obtained by assuming an external mixture. The mass of each aerosol component is converted into an aerosol particle number assuming a separate lognormal distribution with a fixed dry density, dry modal radius and geometric width for each type (Hess et al., 1998).

The prognostic cloud variables are the mass mixing ratios of cloud liquid water and cloud ice and the number concentrations of cloud droplets and ice crystals, as described in Lohmann and Kärcher (2002). The equilibrium cloud droplet concentration at cloud base of stratiform clouds is obtained from the number of hydrophilic aerosols and the vertical velocity (Lin and Leaitch, 1997; hereafter LL97):

$$N_d = 0.1[N_a w / (w + b_0 N_a)]^{b_1} \quad (3)$$

where $b_0 = 0.023 \text{ cm}^4 \text{ s}^{-1}$, $b_1 = 1.27$, and w is the vertical velocity obtained as the sum of the gridbox-mean vertical velocity w_m and a turbulent contribution expressed in terms of the turbulent kinetic energy TKE ($w = w_m + b_2 \sqrt{\text{TKE}}$; $b_2 = 1.33$) (Lohmann, 2002). The autoconversion rate, which determines the cloud lifetime effect, is parameterized following Khairoutdinov and Kogan (2000).

All simulations were conducted in T30 horizontal resolution with 19 vertical levels and a 30 min time-step. The simulations were run over a period of 5 years after an initial spin-up of 3 months using climatological sea surface temperatures and sea ice extent.

3. Results

3.1. CDNC-AODFM-relationship using the original parameterizations

Figure 2a shows the relationship between CDNC and AODFM over oceans, as given from MODIS compared to the results from the GCMs. LMDZ strongly overestimates CDNC, and the slope of the relationship is too steep. Also, the variability, expressed in terms of standard deviation, is too large. For ECHAM4, these findings are even more pronounced except for very small AODFM.

3.2. Fitting the parameterizations

For the LMDZ GCM, we adjust a_0 and a_1 of the BL95 formula (Eq. 2), so that the model reproduces the CDNC-AODFM relationship. Rather than exploiting the full range of possibilities for (a_0, a_1) , we diagnose the parameters by fitting a relationship of the form $N_d = \exp(d_0 + d_1 \ln \tau_{a, fm})$ to the satellite data (getting $d_0 = 5.0$ and $d_1 = 0.30$), and a linear relationship between fine-mode aerosol optical thickness and cloud-base aerosol mass concentration as given by LMDZ model results ($m_a = \gamma \tau_{a, fm}$; getting $\gamma = 0.1$). Combining these two relationships results in $a_0 = d_0 + d_1 \ln \gamma = 4.3$ and $a_1 = d_1 = 0.30$.

For the ECHAM4 GCM, the fitted parameters of the LL97 formula (Eq. 3) are $b_1 = 1.0$ and $b_2 = 0.667$, while $b_0 = 0.023 \text{ cm}^4 \text{ s}^{-1}$ remains unchanged.

Figure 2b shows the adjusted relationships over oceans, where the mean values now match well the observations. Only for very large AODFM, the simulated relationship from LMDZ shows slightly lower CDNC than the observations. Such situations, however, constitute only about 10% of the cases. The variability is not very well reproduced. Both models simulate too little variability at smaller aerosol concentrations, and for larger aerosol concentrations LMDZ still predicts too low variability, while for ECHAM4 the opposite is true. This different behaviour of the two parameterizations may be explained by the fact that LMDZ uses only the aerosol concentration to diagnose the CDNC, while ECHAM4 also takes the updraft velocity into account.

Title Page

Abstract

Introduction

Conclusions

References

Tables

Figures

◀

▶

◀

▶

Back

Close

Full Screen / Esc

Print Version

Interactive Discussion

3.3. Radiative forcings

Figure 3 shows the resulting annual mean radiative forcings from the models, comparing the original parameterizations to the adjusted ones. The radiative forcing is defined here as the difference in top-of-the-atmosphere shortwave net radiative flux between two multi-annual simulations, where the first simulation uses present-day and the second one pre-industrial aerosol emissions for the diagnostics of the CDNC. It is thus not a radiative forcing in the strict sense, but rather a quasi-forcing (Rotstayn and Penner, 2001) or a radiative forcing in the sense of the “fixed SST forcing” defined by Hansen et al. (2002) and similar to the alternative proposed by Shine et al. (2003). The radiative forcing is smaller in LMDZ than in ECHAM4 and more concentrated in the northern hemisphere. When comparing the control with the adjusted parameterizations, for both models, a reduction in the radiative forcing is simulated (−37% for LMDZ and −81% for ECHAM4). Table 1 summarizes the global annual mean radiative forcings for the two sets of simulations with the two models.

4. Discussion

The difference in radiative forcing between the original and the adjusted version of the LMDZ model as obtained by the present study (−37%) is smaller than what has been found in a previous study analyzing the relationship between cloud-top droplet effective radius (CDR) and aerosol concentration. For LMDZ, the fit of the model parameterization to the satellite-retrieved relationship resulted in a reduction of the radiative forcing by the first aerosol indirect effect by roughly 50% down to −0.4 to −0.3 Wm^{−2} (Quaas and Boucher, 2005). The smaller reduction when fitting the CDNC-AODFM relationship is in agreement with former suspicions that the CDR-AI relationship is influenced by both aerosol indirect effects. It is intended to reflect the cloud albedo effect showing a decrease in CDR with increasing aerosol concentration, but may be influenced by the cloud lifetime effect, with CDR increasing with increasing aerosol concentration due to

Constraining the aerosol indirect effect

J. Quaas et al.

Title Page

Abstract

Introduction

Conclusions

References

Tables

Figures

◀

▶

◀

▶

Back

Close

Full Screen / Esc

Print Version

Interactive Discussion

**Constraining the
aerosol indirect effect**J. Quaas et al.

increasing cloud liquid water content. A fit of the CDNC parameterization to the CDR-AI relationship thus potentially yields a too low aerosol indirect effect when neglecting the second indirect effect. In contrast, for ECHAM4 the reduction in radiative forcing found here (-81%) is stronger than what has been suggested from a previous study comparing simulated and satellite-derived CDR to aerosol concentration relationships. Scaling the total aerosol indirect effect in proportion to the slopes of the CDR to aerosol concentration relationships as simulated by the model and as obtained from satellite data gave a reduction by 40% down to -0.85 Wm^{-2} (Lohmann and Lesins, 2002). However, one may argue that the adjustment to the model which is done in this study is a more rigorous approach.

The radiative forcing by the aerosol indirect effects as simulated by the two models in the control simulations differs by almost a factor of two. Although the constraint from satellite data consistently reduces the forcing in both models, and although the absolute difference is reduced as well, it remains considerable ($\sim 40\%$). One difference in the model setup is that ECHAM4 includes a direct aerosol effect, while LMDZ does not. This effect, however, is small in ECHAM4, of the order of -0.1 Wm^{-2} (Lohmann and Feichter, 2001). Other model parameters may play a role. For example, for LMDZ, the introduction of a new advanced land-surface scheme resulted in a decrease in low-level cloud cover over continents and a reduction of the first aerosol indirect radiative forcing by a factor of two (Dufresne et al., 2005). When comparing the distributions of the total aerosol indirect radiative forcing between LMDZ and ECHAM4, one can observe that the LMDZ forcing is more concentrated in the northern hemisphere over North-East America, Europe, and East Asia, while in ECHAM4, it is strong also at low latitudes, with a maximum over South-East Asia. Apart from the parameterization for CDNC analyzed in the present study, two main factors control the strength of the aerosol indirect radiative forcing, which are the anthropogenic aerosol concentration, and the amount of liquid water clouds. In Fig. 4, we compare the AODFM simulated by the adjusted model versions, and its anthropogenic fraction computed from the present-day and pre-industrial simulations. LMDZ simulates a larger AODFM than ECHAM4,

[Title Page](#)[Abstract](#)[Introduction](#)[Conclusions](#)[References](#)[Tables](#)[Figures](#)[I◀](#)[▶I](#)[◀](#)[▶](#)[Back](#)[Close](#)[Full Screen / Esc](#)[Print Version](#)[Interactive Discussion](#)

**Constraining the
aerosol indirect effect**

J. Quaas et al.

Title Page

Abstract

Introduction

Conclusions

References

Tables

Figures

◀

▶

◀

▶

Back

Close

Full Screen / Esc

Print Version

Interactive Discussion

EGU

with a strong contribution of submicronic dust over North-West Africa, and with particularly larger AODFM over the American continents. The relative contribution of anthropogenic aerosols to AODFM is much larger in ECHAM4 than in LMDZ for all regions. Especially over large parts of East Asia, and over low-latitude and southern hemisphere continents, ECHAM4 simulates a large anthropogenic aerosol fraction, where LMDZ does not. This explains to some extent the different distributions of the aerosol indirect forcing in the two models. Figure 5 shows the low-level cloud cover in the two models, and the difference in low-level cloud cover between the present-day and pre-industrial conditions. The main difference is that LMDZ simulates more clouds over the oceans and less clouds over the continents, in particular over the high latitudes of the northern hemisphere. When comparing present-day to pre-industrial aerosol conditions, LMDZ simulates a consistent increase in low-level cloud cover only over the European and West-Asian continent, while ECHAM4 simulates strong increases in low-level cloud cover also over South-East Asia, and over the Pacific and South-Atlantic oceans. This contributes to the larger aerosol indirect radiative forcing at low latitudes and in the southern hemisphere as simulated by ECHAM4 compared to LMDZ, too. Generally, ECHAM4 simulates a stronger variability of cloud properties. The larger low-level cloud cover increase in ECHAM4 indicates a more important cloud lifetime effect in this model. The two aerosol indirect effects can be separated when using off-line aerosol concentrations. Using such versions of the models (with their original parameterizations), ECHAM4 and LMDZ simulate ratios between the cloud lifetime and cloud albedo effects of 1.4 and 1.1, respectively, in agreement with the above explanation (see Lohmann and Feichter, 2005, for an intercomparison). While the constraints from observational data presented here narrow down the uncertainties on the cloud albedo effect, a better constraint of the cloud lifetime effect is needed through measurements of cloud liquid water content and drizzle rate. This needs to be addressed by future investigations (Lohmann et al., 2005¹).

¹Lohmann, U., Feichter, J., Kinne, S., and Quaas, J.: Approaches for constraining global climate models of the anthropogenic indirect aerosol effect, Bull. Am. Meteorol. Soc., submit-

5. Conclusions

The present study evaluates and improves the representation of the aerosol indirect effect as parameterized in two general circulation models by constraining the simulated statistical relationship between cloud droplet number concentration and fine-mode aerosol optical depth with satellite-retrieved data. Both original parameterizations overestimated the slope of the relationship, which represents the strength of the aerosol indirect effect. Fitting the parameters yields a good match of the CDNC-AODFM relationship from the satellite data. However, the variability is often too small in the models.

The model-simulated radiative forcing by the aerosol indirect effect is quite different for both models (-0.84 Wm^{-2} for LMDZ and -1.54 Wm^{-2} for ECHAM4 in the control simulations), but it is consistently reduced when applying the fitted parameterizations by 37 and 81%, for LMDZ and ECHAM4, respectively. The difference in radiative forcing is reduced too, but remains large in relative terms. Explanations for this are differences in simulated aerosol concentration and its anthropogenic fraction, and a stronger cloud variability and second aerosol indirect effect in ECHAM4 than in LMDZ.

Compared to the observational data, from which the original parameterizations applied in the GCMs have been derived, the satellite data used here have the advantage to supply a much broader basis for the statistics, with much more datapoints ($\sim 10^7$), well distributed on the globe and among the different seasons. Also, the spatial and temporal resolutions are well suited for the comparison to GCMs, which may be of importance (Sekiguchi et al., 2003; Quaas et al., 2004). However, the satellite retrievals provide only two-dimensional data, and assumptions have to be used to derive the physical quantities. Furthermore, satellite retrievals of aerosol concentration are possible only in cloud-free conditions. When relating such aerosol retrievals to the cloud retrievals in the same grid-box, we assume therefore that aerosol concentrations are homogeneous throughout the grid-box. Thus, future studies using the upcoming space-

Constraining the aerosol indirect effect

J. Quaas et al.

Title Page

Abstract

Introduction

Conclusions

References

Tables

Figures

◀

▶

◀

▶

Back

Close

Full Screen / Esc

Print Version

Interactive Discussion

borne active remote sensing instruments (lidar/radar) will be essential to confirm our results. Also, with these new observations and more computing power, more elaborate parameterizations of the aerosol indirect effects can be designed and evaluated.

Acknowledgements. Computer time was provided by the “Institut de Développement et des Resources en Informatique Scientifique” (IDRIS) of the CNRS and the German Klimarechenzentrum (DKRZ). The MODIS instrument is operated by the National Aeronautics and Space Agency (NASA), which we acknowledge for their data. We thank J.-L. Brenguier and L. Schüller for useful comments on this study. The work of O. Boucher forms part of the Climate Prediction Programme of the UK Department for Environment, Food and Rural Affairs (Defra) under contract PECD 7/12/37.

References

- Albrecht, B. A.: Aerosols, cloud microphysics, and fractional cloudiness, *Science*, 245, 1227–1230, 1989.
- Anderson, T. L., Charlson, R. J., Schwartz, S. E., Knutti, R., Boucher, O., Rodhe, H., and Heintzenberg, J.: Climate forcing by aerosols – A hazy picture, *Science*, 300, 1103–1104, 2003.
- Boucher, O. and Lohmann, U.: The sulphate-CCN-cloud albedo effect – a sensitivity study with two general circulation models, *Tellus*, 47B, 281–300, 1995.
- Boucher, O., Le Treut, H., and Baker, M. B.: Precipitation and radiation modeling in a general circulation model: Introduction of cloud microphysical processes, *J. Geophys. Res.*, 100, 16 395–16 414, 1995.
- Boucher, O. and Haywood, J.: On summing the components of radiative forcing of climate change, *Clim. Dyn.*, 18, 297–302, 2001.
- Boucher, O., Pham, M., and Venkataraman, C.: Simulation of the atmospheric sulfur cycle in the Laboratoire de Météorologie Dynamique General Circulation Model. Model description, model evaluation, and global and European budgets, in: *Note scientifique de l’IPSL*, vol. 21, edited by: Boulanger, J.-P. and Li, Z.-X., IPSL, Paris, 26 pp., 2002.
- Brenguier, J. L., Pawlowska, H., Schüller, L., Preusker, R., Fischer, J., and Fouquart, Y.: Ra-

Constraining the aerosol indirect effect

J. Quaas et al.

Title Page

Abstract

Introduction

Conclusions

References

Tables

Figures

◀

▶

◀

▶

Back

Close

Full Screen / Esc

Print Version

Interactive Discussion

**Constraining the
aerosol indirect effect**J. Quaas et al.

[Title Page](#)[Abstract](#)[Introduction](#)[Conclusions](#)[References](#)[Tables](#)[Figures](#)[◀](#)[▶](#)[◀](#)[▶](#)[Back](#)[Close](#)[Full Screen / Esc](#)[Print Version](#)[Interactive Discussion](#)

EGU

diative properties of boundary layer clouds: Droplet effective radius versus number concentration, *J. Atmos. Sci.*, 57, 803–821, 2000.

Bréon, F.-M., Tanré, D., and Generoso, S.: Aerosol effect on cloud droplet size monitored from satellite, *Science*, 295, 834–838, 2002.

5 Dufresne, J.-L., Quaas, J., Boucher, O., Denvil, S., and Fairhead, L.: Contrasts in the effects on climate of anthropogenic sulphate aerosols between the 20th and 21st century, *Geophys. Res. Lett.*, in press, 2005.

Feichter, J., Kjellström, E., Rodhe, H., Dentener, F., Lelieveld, J., and Roelofs, G.-J.: Simulation of the tropospheric sulfur cycle in a global climate model, *Atmos. Environ.*, 30, 1693–1707, 10

1996.
Feingold, G., Eberhard, W. L., Veron, D. E., and Previdi, M.: First measurements of the Twomey indirect effect using ground-based remote sensors, *Geophys. Res. Lett.*, 30, 1287, doi:10.1029/2002GL016633, 2003.

Han, Q., Rossow, W. B., Chou, Y., and Welch, R. M.: Global variation of column droplet concentration in low-level clouds, *Geophys. Res. Lett.*, 25, 1419–1422, 1998.

15 Hansen, J., Sato, M., Nazarenko, L., et al.: Climate forcings in Goddard Institute for Space Studies SI2000 simulations, *J. Geophys. Res.*, 107(D18), 4347, doi:10.1029/2001JD001143, 2002.

Hess, M., Koepke, P., and Schult, I.: Optical properties of aerosols and clouds: The software package OPAC, *Bull. Amer. Meteorol. Soc.*, 79, 831–844, 1998.

20 Khairoutdinov, M. and Kogan, Y.: A new cloud physics parameterization in a large-eddy simulation model of marine stratocumulus, *Mon. Wea. Rev.*, 128, 229–243, 2000.

Li, Z.-X.: Ensemble atmospheric GCM simulation of climate interannual variability from 1979 to 1994, *J. Clim.*, 12, 986–1001, 1999.

25 Lin, H. and Leaitch, W. R.: Development of an in-cloud aerosol activation parameterization for climate modelling. Proceedings of the WMO Workshop on Measurement of Cloud Properties for Forecasts of Weather, Air Quality and Climate, Mexico City, June, pp. 328–335, 1997.

Lohmann, U.: Possible aerosol effects on ice clouds via contact nucleation, *J. Atmos. Sci.*, 59, 647–656, 2002.

30 Lohmann, U. and Feichter, J.: Can the direct and semi-direct aerosol effect compete with the indirect effect on a global scale?, *Geophys. Res. Lett.*, 28, 159–161, 2001.

Lohmann, U. and Feichter, J.: Global indirect aerosol effects: A review, *Atmos. Chem. Phys.*, 5, 715–737, 2005,

- Lohmann, U., Feichter, J., Penner, J., and Leaitch, R.: Indirect effect of sulfate and carbonaceous aerosols: A mechanistic treatment, *J. Geophys. Res.*, 105(D10), 12 193–12 206, doi:10.1029/1999JD901199, 2000.
- 5 Lohmann, U. and Kärcher, B.: First interactive simulations of cirrus clouds formed by homogeneous freezing in the ECHAM GCM, *J. Geophys. Res.*, 107, doi:10.1029/2001JD000767, 2002.
- Lohmann, U. and Lesins, G.: Stronger constraints on the anthropogenic indirect aerosol effect, *Science*, 298, 1012–1015, 2002.
- 10 Lohmann, U. and Lesins, G.: Comparing continental and oceanic cloud susceptibilities to aerosols, *Geophys. Res. Lett.*, 30, 1791, doi:10.1029/2003GL017828, 2003.
- Nakajima, T. and King, M. D.: Determination of the optical thickness and effective particle radius of clouds from reflected solar radiation measurements. Part I: Theory, *J. Atmos. Sci.*, 47, 1878–1893, 1990.
- 15 Platnick, S., King, M. D., Ackerman, S. A., Menzel, W. P., Baum, B. A., Riédi, J. C., and Frey, R. A.: The MODIS cloud products: Algorithms and examples from Terra, *IEEE Trans. Geosci. Remote Sensing*, 41, 459–473, 2003.
- Quaas, J. and Boucher, O.: Constraining the first aerosol indirect radiative forcing in the LMDZ GCM using POLDER and MODIS satellite data, *Geophys. Res. Lett.*, 32, L17814, doi:10.1029/2005GL023850, 2005.
- 20 Quaas, J., Boucher, O., and Bréon, F.-M.: Aerosol indirect effects in POLDER satellite data and in the LMDZ GCM, *J. Geophys. Res.*, 109, D08205, doi:10.1029/2003JD004317, 2004.
- Ramaswamy, V., Boucher, O., Haigh, J., Hauglustaine, D., Haywood, J., Myhre, G., T., Shi, G. Y., and Solomon, S.: Radiative forcing of climate change, in: *Climate change 2001 – The scientific basis*, Contribution of working group I to the Third Assessment Report of the Intergovernmental Panel on Climate Change, edited by: Houghton, J. T., Ding, Y., Griggs, D. J., Noguer, M., van der Linden, P. J., Dai, X., Maskell, K., and Johnson, D. J., Cambridge University Press, Cambridge, pp. 349–416, 2001.
- 25 Reddy, M. S., Boucher, O., Bellouin, N., Schulz, M., Balkanski, Y., Dufresne, J.-L., and Pham, M.: Estimates of multi-component aerosol optical depth and direct radiative perturbation in the LMDZT General Circulation Model, *J. Geophys. Res.*, 110, D10S16, doi:10.1029/2004JD004757, 2005.
- 30 Remer, L. A., Kaufman, Y. J., Mattoo, S., Martins, J. V., Ichoku, C., Levy, R. C., Kleidman, R.

Constraining the aerosol indirect effect

J. Quaas et al.

Title Page

Abstract

Introduction

Conclusions

References

Tables

Figures

◀

▶

◀

▶

Back

Close

Full Screen / Esc

Print Version

Interactive Discussion

G., Tanré, D., Chu, D. A., Li, R. R., Eck, T. F., Vermote, E., and Holben, B. N.: The MODIS algorithm, products, and validation, *J. Atmos. Sci.*, 62, 947–973, doi:10.1175/JAS3385.1, 2005.

5 Roeckner, E., Arpe, K., Bengtsson, L., et al.: The atmospheric general circulation model ECHAM4: Model description and simulation of the present day climate, Tech. Rep., 218, Max-Planck-Inst. für Meteorol., Hamburg, Germany, 1996.

Rotstayn, L. D. and Liu, Y.: A smaller global estimate of the second indirect aerosol effect, *Geophys. Res. Lett.*, 32, L05708, doi:10.1029/2004GL021922, 2005.

10 Rotstayn, L. D. and Penner, J. E.: Indirect aerosol forcing, quasi-forcing and climate response, *J. Clim.*, 20, 2960–2975, 2001.

Schüller, L., Bennartz, R., Fischer, J., and Brenguier, J.-L.: An algorithm for the retrieval of droplet number concentration and geometrical thickness of stratiform marine boundary layer clouds applied to MODIS radiometric observations, *J. Appl. Meteorol.*, 44, 28–38, 2005.

15 Sekiguchi, M., Nakajima, T., Suzuki, K., Kawamoto, K., Higurashi, A., Rosenfeld, D., Sano, I., and Mukai, S.: A study of the direct and indirect effects of aerosols using global satellite data sets of aerosol and cloud parameters, *J. Geophys. Res.*, 108(D22), 4699, doi:10.1029/2002JD003359, 2003.

20 Shine, K. P., Cook, J., Highwood, E. J., and Joshi, M. M.: An alternative to radiative forcing for estimating the relative importance of climate change mechanisms, *Geophys. Res. Lett.*, 30, 2047, doi:10.1029/2003GL018141, 2003.

Twomey, S.: Pollution and the planetary albedo, *Atmos. Environ.*, 8, 1251–1256, 1974.

**Constraining the
aerosol indirect effect**

J. Quaas et al.

Title Page

Abstract

Introduction

Conclusions

References

Tables

Figures

◀

▶

◀

▶

Back

Close

Full Screen / Esc

Print Version

Interactive Discussion

**Constraining the
aerosol indirect effect**

J. Quaas et al.

[Title Page](#)[Abstract](#)[Introduction](#)[Conclusions](#)[References](#)[Tables](#)[Figures](#)[I◀](#)[▶I](#)[◀](#)[▶](#)[Back](#)[Close](#)[Full Screen / Esc](#)[Print Version](#)[Interactive Discussion](#)

EGU

Table 1. Global annual mean radiative forcings by the total aerosol indirect effect.

Experiment	Standard (Wm^{-2})	Modified (Wm^{-2})
LMDZ	-0.84	-0.53
ECHAM4	-1.54	-0.29

**Constraining the
aerosol indirect effect**

J. Quaas et al.

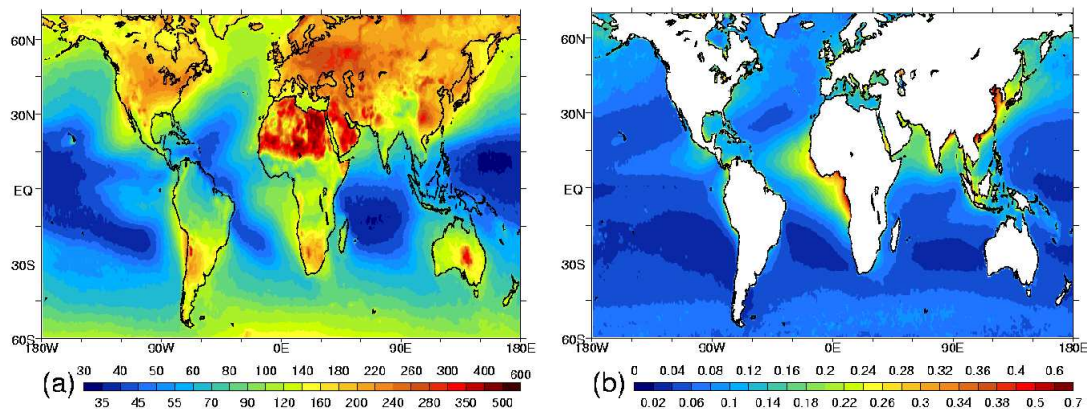


Fig. 1. Annual mean (five-year average) **(a)** cloud droplet number concentration (cm^{-3}) and **(b)** fine-mode aerosol optical depth as derived from MODIS.

[Title Page](#)[Abstract](#)[Introduction](#)[Conclusions](#)[References](#)[Tables](#)[Figures](#)[◀](#)[▶](#)[◀](#)[▶](#)[Back](#)[Close](#)[Full Screen / Esc](#)[Print Version](#)[Interactive Discussion](#)

EGU

Constraining the
aerosol indirect effect

J. Quaas et al.

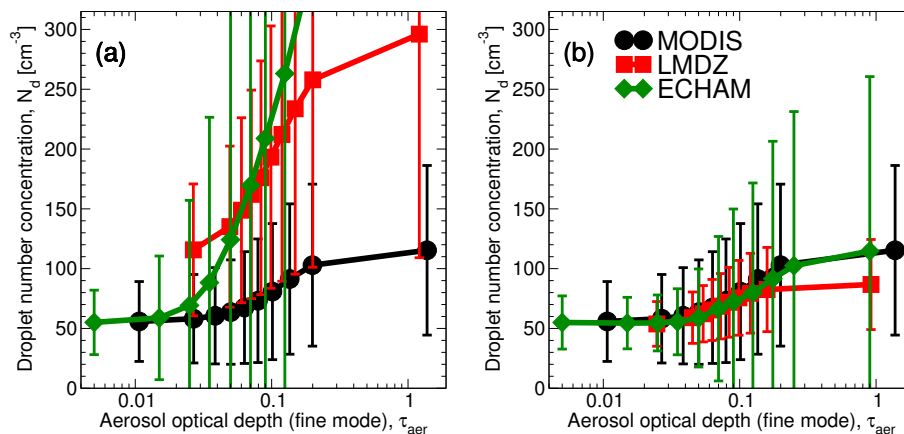


Fig. 2. CDNC-AODFM relationships over ocean, as given by MODIS (black, circles), by the LMDZ (red, squares), and ECHAM4 (green, diamonds) GCMs. Error bars show ± 1 standard deviation within each bin. **(a)** using the original parameterizations, **(b)** using the adjusted parameterizations.

[Title Page](#)[Abstract](#)[Introduction](#)[Conclusions](#)[References](#)[Tables](#)[Figures](#)[◀](#)[▶](#)[◀](#)[▶](#)[Back](#)[Close](#)[Full Screen / Esc](#)[Print Version](#)[Interactive Discussion](#)

EGU

Constraining the
aerosol indirect effect

J. Quaas et al.

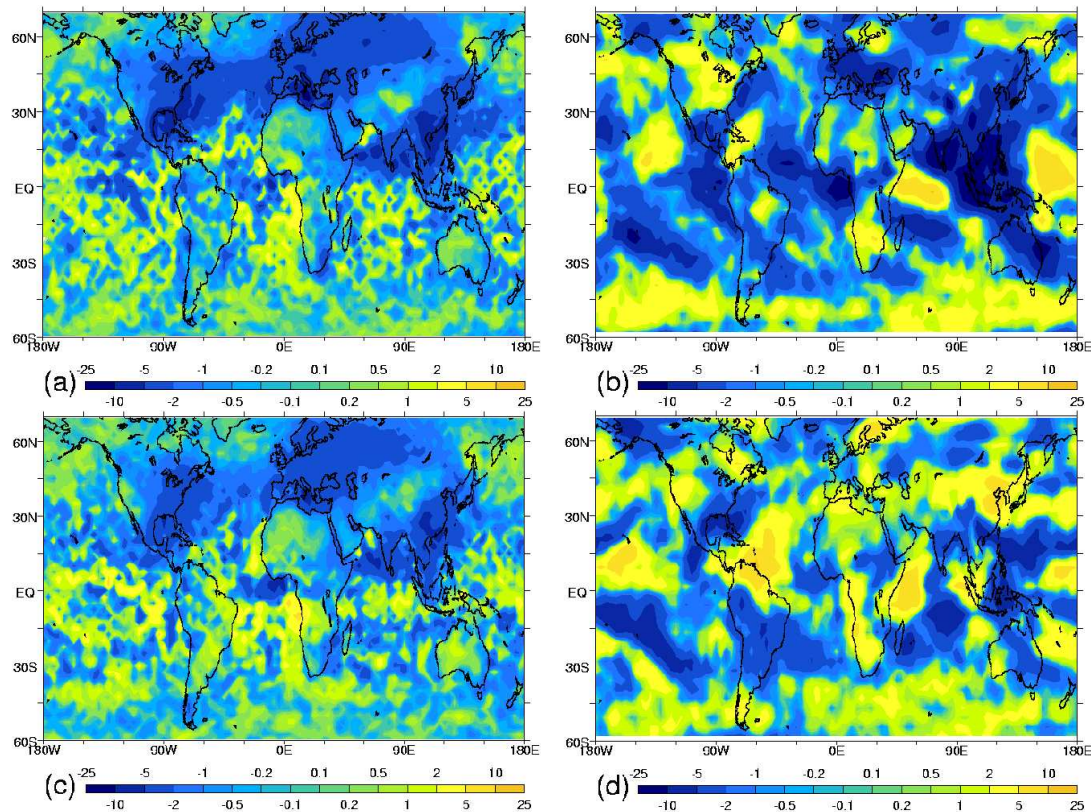


Fig. 3. Annual mean radiative forcing by the total (cloud albedo and cloud lifetime) aerosol indirect effect as simulated using the original parameterizations by (a) LMDZ and (b) ECHAM4, and using the adjusted parameterizations by (c) LMDZ and (d) ECHAM4.

[Title Page](#)[Abstract](#)[Introduction](#)[Conclusions](#)[References](#)[Tables](#)[Figures](#)[◀](#)[▶](#)[◀](#)[▶](#)[Back](#)[Close](#)[Full Screen / Esc](#)[Print Version](#)[Interactive Discussion](#)

EGU

**Constraining the
aerosol indirect effect**J. Quaas et al.

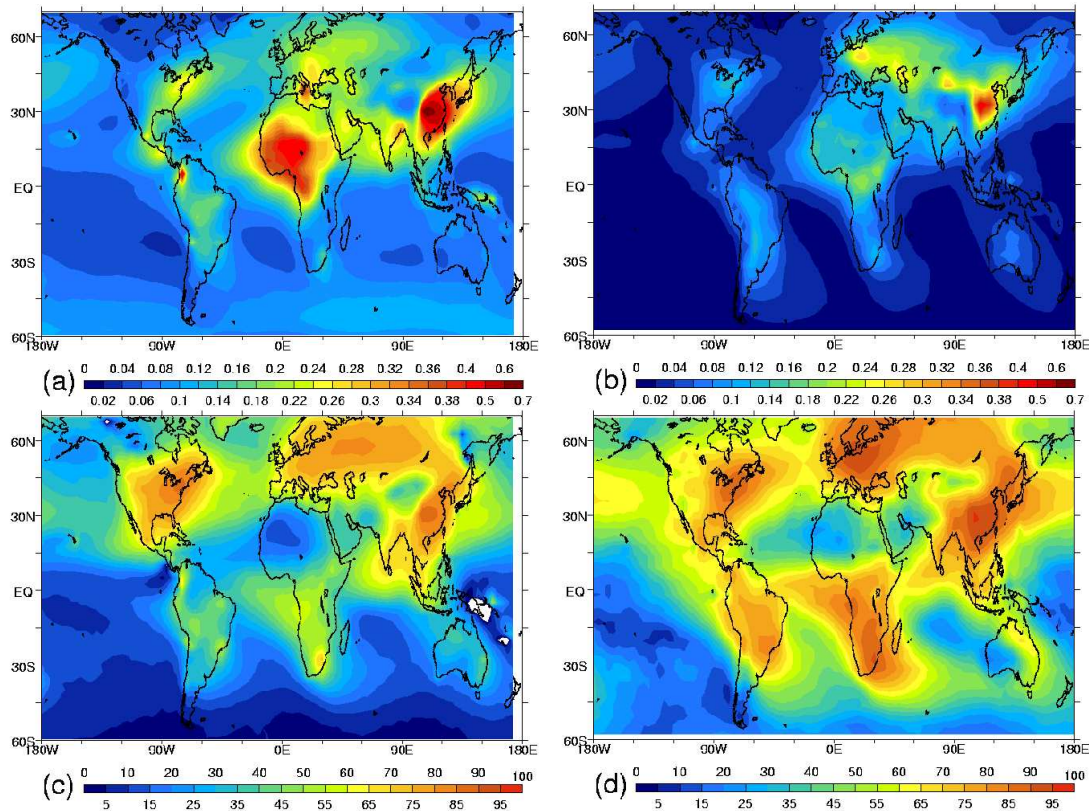


Fig. 4. Annual mean fine-mode aerosol optical depth for present-day conditions as simulated with the adjusted parameterizations by (a) LMDZ and (b) ECHAM4, and anthropogenic fraction deduced from the present-day and pre-industrial simulations for (c) LMDZ and (d) ECHAM4.

[Title Page](#)[Abstract](#)[Introduction](#)[Conclusions](#)[References](#)[Tables](#)[Figures](#)[◀](#)[▶](#)[◀](#)[▶](#)[Back](#)[Close](#)[Full Screen / Esc](#)[Print Version](#)[Interactive Discussion](#)

EGU

Constraining the
aerosol indirect effect

J. Quaas et al.

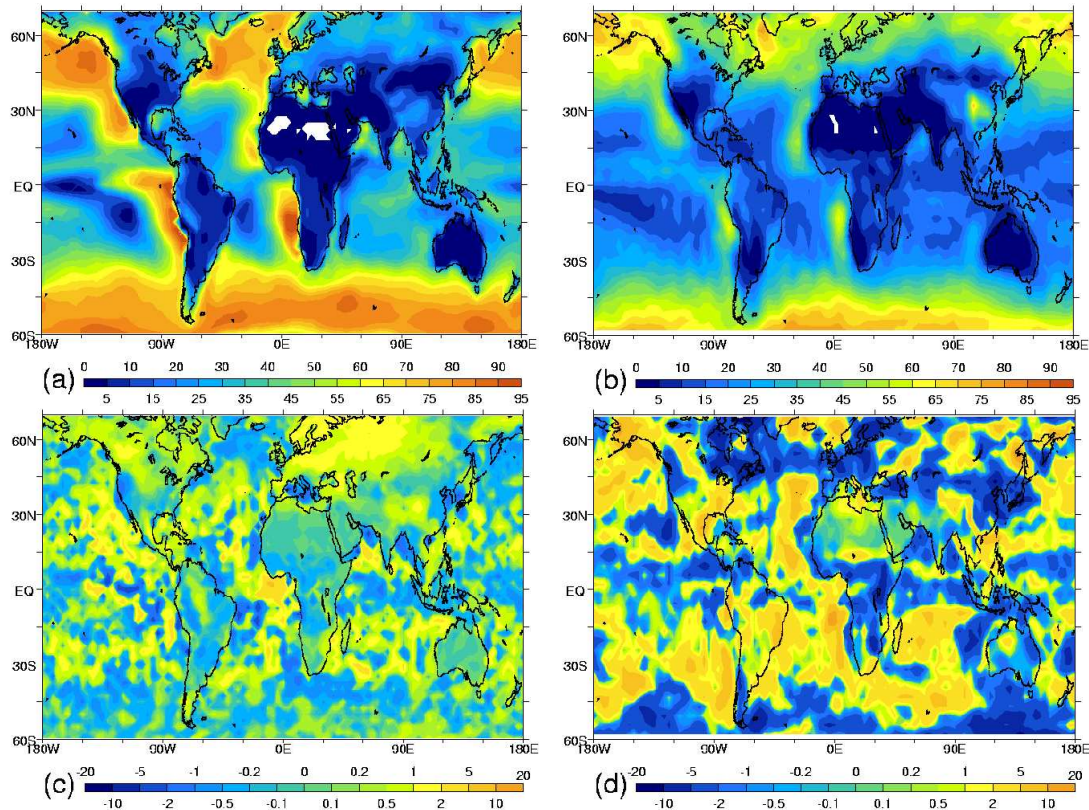


Fig. 5. Annual mean low-level cloud cover as simulated with the adjusted parameterizations by (a) LMDZ and (b) ECHAM4, and difference in low-level cloud cover between present-day and pre-industrial conditions from (c) LMDZ and (d) ECHAM4.

[Title Page](#)[Abstract](#)[Introduction](#)[Conclusions](#)[References](#)[Tables](#)[Figures](#)[◀](#)[▶](#)[◀](#)[▶](#)[Back](#)[Close](#)[Full Screen / Esc](#)[Print Version](#)[Interactive Discussion](#)

EGU