



**HAL**  
open science

## Model intercomparison of indirect aerosol effects

J. E. Penner, J. Quaas, T. Storelvmo, T. Takemura, O. Boucher, H. Guo, A. Kirkevåg, J. E. Kristjánsson, O. Seland

► **To cite this version:**

J. E. Penner, J. Quaas, T. Storelvmo, T. Takemura, O. Boucher, et al.. Model intercomparison of indirect aerosol effects. *Atmospheric Chemistry and Physics Discussions*, 2006, 6 (1), pp.1579-1617. hal-00327826

**HAL Id: hal-00327826**

**<https://hal.science/hal-00327826>**

Submitted on 18 Jun 2008

**HAL** is a multi-disciplinary open access archive for the deposit and dissemination of scientific research documents, whether they are published or not. The documents may come from teaching and research institutions in France or abroad, or from public or private research centers.

L'archive ouverte pluridisciplinaire **HAL**, est destinée au dépôt et à la diffusion de documents scientifiques de niveau recherche, publiés ou non, émanant des établissements d'enseignement et de recherche français ou étrangers, des laboratoires publics ou privés.

Indirect aerosol  
effects

J. E. Penner et al.

# Model intercomparison of indirect aerosol effects

J. E. Penner<sup>1</sup>, J. Quaas<sup>2,\*</sup>, T. Storelvmo<sup>3</sup>, T. Takemura<sup>4</sup>, O. Boucher<sup>5,\*\*</sup>, H. Guo<sup>1</sup>,  
A. Kirkevåg<sup>3</sup>, J. E. Kristjánsson<sup>3</sup>, and Ø. Seland<sup>3</sup>

<sup>1</sup>University of Michigan, Department of Atmospheric, Oceanic and Space Sciences, Ann Arbor, USA

<sup>2</sup>Laboratoire de Météorologie Dynamique, CNRS/Institut Pierre Simon Laplace, 4, place Jussieu, 75005 Paris, France

<sup>3</sup>University of Oslo, Department of Geosciences, Oslo, Norway

<sup>4</sup>Research Institute for Applied Mechanics, Kyushu University, Fukuoka, Japan

<sup>5</sup>Laboratoire d'Optique Atmosphérique, CNRS / Université de Lille I, 59655 Villeneuve d'Ascq Cedex, France

\*now at: Max Planck Institute for Meteorology, Bundesstraße 53, Hamburg, Germany

\*\*now at: Hadley Centre, Met Office, FitzRoy Road, Exeter EX1 3PB, UK

Received: 21 November 2005 – Accepted: 18 January 2006 – Published: 28 February 2006

Correspondence to: J. E. Penner (penner@umich.edu)

Title Page

Abstract

Introduction

Conclusions

References

Tables

Figures

◀

▶

◀

▶

Back

Close

Full Screen / Esc

Printer-friendly Version

Interactive Discussion

EGU

## Abstract

Modeled differences in predicted effects are increasingly used to help quantify the uncertainty of these effects. Here, we examine modeled differences in the aerosol indirect effect in a series of experiments that help to quantify how and why model-predicted aerosol indirect forcing varies between models. The experiments start with an experiment in which aerosol concentrations, the parameterization of droplet concentrations and the autoconversion scheme are all specified and end with an experiment that examines the predicted aerosol indirect forcing when only aerosol sources are specified. Although there are large differences in the predicted liquid water path among the models, the predicted aerosol indirect effect for the first experiment is rather similar. Changes to the autoconversion scheme can lead to large changes in the liquid water path of the models and to the response of the liquid water path to changes in aerosols. Nevertheless, these changes do not necessarily lead to large changes in the radiative forcing. The parameterization of cloud fraction within models is not sensitive to the aerosol concentration, and, therefore, the response of the modeled cloud fraction within the present models appears to be smaller than that which would be associated with model “noise”. The prediction of aerosol concentrations, given a fixed set of sources, leads to some of the largest differences in the predicted aerosol indirect radiative forcing among the models. Thus, this aspect of modeling requires significant improvement in order to improve the prediction of aerosol indirect effects.

## 1 Introduction

Tropospheric aerosols are important in determining cloud properties, but it has been difficult to quantify their effect because they have a relatively short lifetime and so vary strongly in space and time. The direct radiative effect of aerosols (i.e., the extinction of sunlight by aerosol scattering and absorption) can cause changes to clouds through changes in the temperature structure of the atmosphere (termed the semi-direct effect

## Indirect aerosol effects

J. E. Penner et al.

Title Page

Abstract

Introduction

Conclusions

References

Tables

Figures

◀

▶

◀

▶

Back

Close

Full Screen / Esc

Printer-friendly Version

Interactive Discussion

of aerosols on clouds). This effect will tend to decrease clouds in the layers where aerosol absorption is strong, but may increase clouds below these levels (Ackerman et al., 1989; Hansen et al., 1997; Penner et al., 2003; Feingold et al., 2005). In addition, aerosols may alter clouds by acting as cloud condensation nuclei (CCN). Two modes of aerosol indirect effects (AIE) may be distinguished. First, an increase of aerosol particles may increase the initial cloud droplet number concentration (CDNC) if the cloud liquid water content is assumed constant. This effect, termed the first indirect effect, tends to cool the climate because it increases the cloud optical depth by approximately the 1/3 power of the change in the cloud droplet number (Twomey, 1974). An increase in the cloud optical depth increases cloud albedo and thus reflectivity, with clouds of intermediate optical depth being the most susceptible. The second indirect effect relates to changes in cloud morphology associated with changes in the precipitation efficiency of the cloud. An increase in the cloud droplet number concentration will decrease the size of the cloud droplets. Since the cloud microphysical processes that form precipitation depend on the size of the droplets, the cloud lifetime as well as the liquid water content, the height of the cloud, and the cloud cover may increase, though the response of the cloud to changes in the droplet number concentration is sensitive to the local meteorological conditions (Ackerman et al., 2004). For low, warm clouds, these changes will tend to add an additional net cooling to the climate system. Both satellite and in-situ observations have been used to determine the first indirect effect (Nakajima et al., 2001; Bréon et al., 2002; Feingold et al., 2003; Penner et al., 2004; Kaufmann et al., 2005). But it has been difficult to determine the 2nd indirect effect, because changes in the observed liquid water path, cloud height and cloud cover are influenced by large-scale and cloud-scale dynamics and thermodynamics as well as by the influence of aerosols on cloud microphysics. General circulation model (GCMs) include the treatment of a variety of dynamical and physical processes and are therefore able to simulate interactions between many climate parameters. Nevertheless, their quantification of the aerosol indirect effect is suspect because the scale of a GCM grid box is too coarse to properly resolve cloud dynamics and microphysics. Comparing

**Indirect aerosol effects**

J. E. Penner et al.

[Title Page](#)[Abstract](#)[Introduction](#)[Conclusions](#)[References](#)[Tables](#)[Figures](#)[◀](#)[▶](#)[◀](#)[▶](#)[Back](#)[Close](#)[Full Screen / Esc](#)[Printer-friendly Version](#)[Interactive Discussion](#)

the results of different models and simulations can help us determine the uncertainty associated with global model estimates of the aerosol indirect effect.

Previously, Boucher and Lohmann (1995) compared two GCMs to examine the differences in predictions of the first indirect effect associated with sulfate aerosols. And Chen and Penner (2005) have examined a set of simulations using different model formulations to understand how different choices of parameterization impact the magnitude of the first indirect effect. Here, we perform six different model experiments with three different GCMs to determine the differences between models for the first indirect effect as well as differences in the combined first and second indirect effects. Section 2 describes the prescribed experiments while Sect. 3 provides an overview of the main results together with a discussion. Section 4 gives our conclusions.

## 2 Description

The three models examined here are the Laboratoire de Météorologie Dynamique-Zoom (LMD-Z) general circulation model (Li, 1999), the Center for Climate System Research (CCSR)/University of Tokyo, National Institute for Environmental Studies (NIES), and Frontier Research Center for Global Change (FRCGC) (hereafter CCSR) general circulation model (Numaguti et al., 1995; Hasumi and Emori, 2004), and the version of the National Center for Atmospheric Research (NCAR) Community Atmosphere Model version 2.0.1 (CAM-2.0.1) (<http://www.cesm.ucar.edu/models/>) modified at the University of Oslo (Kristjansson, 2002; Storelvmo et al., 2005<sup>1</sup>). Below we briefly describe each model's cloud fraction and condensation schemes. The model schemes for determining cloud droplet number are described below in the Sect. 2.2.

<sup>1</sup>Storelvmo, T., Kristjansson, J. E., Ghan, S. J., Kirkevåg, A., and Seland, Ø.: Predicting cloud droplet number concentration in CAM-Oslo, J. Geophys. Res., submitted, 2005.

### Indirect aerosol effects

J. E. Penner et al.

Title Page

Abstract

Introduction

Conclusions

References

Tables

Figures

◀

▶

◀

▶

Back

Close

Full Screen / Esc

Printer-friendly Version

Interactive Discussion

## 2.1 Cloud schemes in the models

In the LMD-Z model, an assumed subgrid scale probability distribution of total water is used to determine cloud fraction. This distribution is uniform and extends from  $q_t - \Delta q_t$  to  $q_t + \Delta q_t$  where  $q_t$  is the total (liquid, ice and vapor) water in the grid and  $\Delta q_t = r q_t$  with  $0 < r < 1$  varying in the vertical. The portion above saturation determines the cloud fraction of the grid (Le Treut and Li, 1991). The removal of cloud water mixing ratio follows a formula that is similar to that developed by Chen and Cotton (1987) but ignores their term that involves spatial inhomogeneities in liquid water:

$$P = -\frac{dq_l}{dt} = c' \rho_a^{11/3} q_l^{7/3} N_d^{-1/3} H(c'' \rho_a^{2/3} q_l^{1/3} N_d^{-1/3} - r_0) \quad (1)$$

where  $c' = 1.1 \left(\frac{3}{4}\right)^{4/3} \pi^{-1/3} \rho_w^{-4/3} c k$  and  $c'' = 1.1 \left(\frac{3}{4}\right)^{1/3} \pi^{-1/3} \rho_w^{-1/3}$ ,  $q_l$  is the in-cloud liquid water mixing ratio,  $\rho_a$  is the air density,  $\rho_w$  is the density of water,  $H$  is the Heaviside function,  $N_d$  is cloud droplet number, and  $k = 1.19 \times 10^8 \text{ m}^{-1} \text{ s}^{-1}$  is a parameter in the droplet fall velocity. In the experiments described here, the threshold value for  $r_0$  was set to  $8 \mu\text{m}$ , and the parameter  $c$  was set to 1. Other aspects of the cloud microphysical scheme are described in Boucher et al. (1995). Note that for the simulations reported here, collection of cloud drops by falling rain was not included. Moreover, the LMD-Z model did not include a prognostic equation for droplet number concentration. This was simply diagnosed based on the aerosol fields.

Convective condensation in the LMD-Z model follows the Tiedke et al. (1989) scheme for convection. Complete detrainment of the convective cloud water is assumed at each physics time step. Thus the convective cloud water is immediately assumed to become stratiform for the purpose of determining the subgrid probability distribution of liquid water. The horizontal resolution of the LMD-Z model was approximately  $3.75^\circ$  longitude by  $2.5^\circ$  latitude with 19 vertical layers with centroids varying from 1004.26 hPa to 3.88 hPa.

The CCSR model determines cloud fraction based on Le Treut and Li (1991). This is similar to the method used in the LMD-Z model. In particular, the liquid content,  $l$ , is

Title Page

Abstract

Introduction

Conclusions

References

Tables

Figures

◀

▶

◀

▶

Back

Close

Full Screen / Esc

Printer-friendly Version

Interactive Discussion

determined as follows,

$$I = \begin{cases} 0 & (1 + b)q_t \leq q^* \\ \frac{[(1+b)q_t - q^*]^2}{4bq_t} & (1 - b)q_t < q^* < (1 + b)q_t \\ q_t - q^* & (1 - b)q_t \geq q^* \end{cases} \quad (2)$$

where  $q^*$  is the saturated mixing ratio and  $b$  varies between 0 and 1, depending on the mixing length and cloud base mass flux. The ratio of liquid cloud water to total cloud

5 water  $f_{liq}$  is given by

$$f_{liq} = \min \left[ \max \left( \frac{T - T_w}{T_s - T_w}, 0 \right), 1 \right] \quad (3)$$

where  $T$  is temperature, and  $T_s$  and  $T_w$  are set to 273.15 K and 258.15 K, respectively. The rate of formation of precipitation was determined using a scheme developed by Berry (1967):

$$P = \frac{\alpha \rho_a q_l}{\beta + \gamma \frac{N_d}{\rho q_l}} \quad (4)$$

The parameters in this scheme were set to  $\alpha=0.01$ ,  $\beta=0.12$  and  $\gamma=1 \times 10^{-12}$ . The model includes a representation for autoconversion, accretion, evaporation, freezing, and melting of ice. The accretion term is  $F_p \times acc$  where  $F_p$  is the precipitation flux above the applied layer and  $acc=1$ , which is simplified from the collision equation between

15 cloud and rain droplets. The cumulus parameterization scheme is based on Arakawa and Schubert (1974). Further details, including the prognostic treatment for droplet number, are given in Takemura et al. (2005). The model was run at a horizontal resolution of  $1.125^\circ$  longitude by  $1.121^\circ$  longitude and had 20 vertical layers with centroids from 980.08 hPa to 8.17 hPa.

20 In the Oslo version of CAM, cloud water, condensation and microphysics follows the scheme developed by Rasch and Kristjansson (1998). The stratiform cloud fraction

Title Page

Abstract

Introduction

Conclusions

References

Tables

Figures

◀

▶

◀

▶

Back

Close

Full Screen / Esc

Printer-friendly Version

Interactive Discussion

is diagnosed from the relative humidity, vertical motion, static stability and convective properties (Slingo, 1987), except that an empirical formula that relates cloud fraction to the difference in the potential temperature between 700 hPa and the surface found by Klein and Hartmann (1993) is used for cloud fraction over oceans. Precipitation formation by liquid cloud water is calculated using the formulation of Chen and Cotton (1987) with modifications by Liou and Ou (1989) and Boucher et al. (1995):

$$P = C_{l,aut} q_l^2 \rho_a / \rho_w (q_l \rho_a / \rho_w N_d)^{1/3} H (r_{31} - r_{31c}) \quad (5)$$

where  $C_{l,aut}$  is a constant and was set to 5 mm/day,  $r_{31}$  is the mean volume droplet radius and  $r_{31c}$  is a critical value which was set to 15  $\mu\text{m}$ . The droplet radius was determined from the liquid water content of the cloud and the predicted droplet number concentration. Since the CAM-Oslo model did not include a prognostic equation for cloud droplets in these experiments (they were simply diagnosed from the aerosol fields as in the LMD-Z model), the calculation of droplet number did not change as a result of coalescence and autoconversion and other collection processes. In addition, the cloud droplet effective radius had a lower limit of 4  $\mu\text{m}$  and an upper limit of 20  $\mu\text{m}$ . Collection of cloud drops by rain and snow were represented as described in Rasch and Kristjansson (1998) but these processes were only included in experiments 4–6. Ice water was also removed by autoconversion of ice to snow, and by collection of ice by snow. Details are given in Rasch and Kristjansson (1998).

Convection in the CAM-Oslo model follows the Zhang and McFarlane (1995) scheme for penetrative convection and the Hack (1994) scheme for shallow convection. The model simulations were run at a horizontal resolution of 2.5 longitude by 2 latitude with 26 vertical layers having centroids from 976.38 hPa to 3.54 hPa.

## 2.2 Design of the model experiments

Model estimates of the aerosol indirect effect depend not only on the cloud schemes in the models, but also on the relationship adopted between aerosols and cloud droplets, the effect of the aerosols on precipitation efficiency, and the model representation of

[Title Page](#)
[Abstract](#)
[Introduction](#)
[Conclusions](#)
[References](#)
[Tables](#)
[Figures](#)
[Back](#)
[Close](#)
[Full Screen / Esc](#)
[Printer-friendly Version](#)
[Interactive Discussion](#)



## Indirect aerosol effects

J. E. Penner et al.

Title Page

Abstract

Introduction

Conclusions

References

Tables

Figures

◀

▶

◀

▶

Back

Close

Full Screen / Esc

Printer-friendly Version

Interactive Discussion

aerosols. To distinguish how each of these factors affect the calculated radiative indirect effect, we designed a set of experiments in which these factors are first constrained in each of the models and then relaxed to each model's own representation of the process. Six model experiments each with both present day and pre-industrial aerosol concentrations were specified. These are described next and outlined in Table 1.

For the first experiment (and also experiments 2–4) we prescribed the monthly average aerosol mass concentrations and size distribution and we prescribed the parameterization of cloud droplet number concentration. We also did not allow any effect of the aerosols on precipitation efficiency nor any direct effect of the aerosols. We specified that models use the precipitation efficiency in Sundquist (1978) which depends only on the in-cloud liquid water mixing ratio:

$$P = 10^{-4} q_l \left[ 1 - e^{-(q_l/q_c)^2} \right] \quad (6)$$

where  $q_l$  is the in-cloud liquid water mixing ratio (kg/kg) and  $q_c = 3 \times 10^{-4}$ . This experiment (as well as experiments 2–5) does not include aerosol direct effects on the heating profile in the model (thus precluding any effects from the so-called “semi-direct” effect). The standard aerosol model fields were adopted from the “average” IPCC model experiment (e.g. Chen and Penner, 2005), but with a standard exponential fall off with altitude (with a 2-km scale height) to facilitate interpolation of these aerosol fields to each model grid. The fixed method to relate aerosol concentrations to droplet number concentrations was that developed by Boucher and Lohmann (1995) which only requires the sulfate mass concentrations as input:

$$N_d = A(m_{\text{SO}_4^{2-}})^B \quad (7)$$

Where  $m_{\text{SO}_4^{2-}}$  is the mass concentration of sulfate aerosol at cloud base in  $\mu\text{g m}^{-3}$ , and  $A$  and  $B$  are empirically determined constants. The values we adopted for  $A$  and  $B$  (from formula “A” of Boucher and Lohmann, 1995) are given in Table 2.

In this first experiment, the only factor that should distinguish the different model results is their separate cloud formation and radiation schemes.

## Indirect aerosol effects

J. E. Penner et al.

Title Page

Abstract

Introduction

Conclusions

References

Tables

Figures

◀

▶

◀

▶

Back

Close

Full Screen / Esc

Printer-friendly Version

Interactive Discussion

The second experiment was set up as in the first, but each modeler used their own method for relating the aerosols to droplets. Since this second experiment also prescribed the aerosol mass concentrations and size distribution, the only issue that would distinguish the model results (other than their separate cloud and radiation schemes) is the method of relating aerosols to cloud droplet number concentration. These schemes are described next.

In the LMD-Z model, the cloud droplet nucleation parameterization was diagnosed from aerosol mass concentration using the empirical formula “D” of Boucher and Lohmann (1995). This method uses the formula given above for experiment 1, but the constants  $A$  and  $B$  had the values 162 and 0.41, respectively.

Both the CAM-Oslo model and the CCSR model used the multi-modal formulation by Abdul-Razzak and Ghan (2000) to calculate droplet concentrations. In this scheme, the droplet concentration,  $N_{ci}$ , originating from an aerosol component  $i$  is diagnosed as follows:

$$N_{ci} = N_{ai} \left\{ 1 + \left( S_{mi}^2 \sum_{j=1}^J \frac{F_j}{S_{mj}^2} \right)^{\frac{b(\sigma_{ai})}{3}} \right\}^{-1} \quad (8)$$

where

$$S_{mi} = \frac{2}{\sqrt{B_i}} \left( \frac{A}{3r_{mi}} \right)^{\frac{3}{2}}$$

and

$$F_j = \left\{ f_1(\sigma_{aj}) \left( \frac{AN_{aj}\beta}{3\alpha\omega} \right)^2 + f_2(\sigma_{aj}) \frac{2A^3 N_{aj}\beta\sqrt{G}}{27B_j r_{mj}^3 (\alpha\omega)^{3/2}} \right\}^3.$$

Here,  $j$  also refers to an aerosol component,  $J$  is the total number of aerosol components,  $N_{ai}$  is the aerosol particle number concentration of component  $i$ ,  $w$  is the

## Indirect aerosol effects

J. E. Penner et al.

Title Page

Abstract

Introduction

Conclusions

References

Tables

Figures

◀

▶

◀

▶

Back

Close

Full Screen / Esc

Printer-friendly Version

Interactive Discussion

updraft velocity,  $r_{mi}$  and  $\sigma_{ai}$  are the mode radius and standard deviation of the aerosol particle size distribution, respectively,  $A$  and  $B_i$  are the coefficients of the curvature and solute effects, respectively,  $a$  and  $b$  are functions of the saturated water vapor mixing ratio, temperature, and pressure,  $G$  is a function with the water vapor diffusivity, saturated water vapor pressure, and temperature, and  $f_1$ ,  $f_2$ , and  $b$  depend on the standard deviation of the aerosol particle size distribution.

For the CCSR model the updraft velocity was calculated from the formulation in Lohmann et al. (1999), while in the CAM-Oslo model the mean updraft velocity was set to the large scale updraft calculated by the GCM and subgrid scale variations followed a Gaussian distribution with standard deviation:

$$\sigma_w = \frac{\sqrt{2\pi K}}{\Delta z} \quad (9)$$

where  $K$  is the vertical eddy diffusivity and  $\Delta z$  is the model layer thickness (Ghan et al., 1997).

In both experiments 1 and 2, one expects only small changes to the liquid water path, cloud height, and cloud fraction between present day and pre-industrial simulations since the aerosols are not allowed to change the precipitation efficiency.

The third experiment introduced the effect of aerosols on the precipitation efficiency. For this experiment, the formulation of Khairoutdinov and Kogan (2000) for the rate of conversion of cloud droplets to precipitation was implemented in the models:

$$P = 1350 q_i^{2.47} N_d^{-1.79} \quad (10)$$

In the fourth experiment, we continued to prescribe aerosol size and chemical composition, but each modeler used both their own method for relating the aerosols to droplets and their own method for determining the effect of aerosols on the precipitation efficiency. This experiment combines the effect of each model's own determination of the change in cloud droplet number concentration caused by the common aerosols with changes in the precipitation efficiency using each model's parameterization (described above) and changes in each model's thermodynamic and dynamic response of clouds.

Finally, the fifth and sixth experiments used each model's own calculation of aerosol fields, but the emissions of aerosols and aerosol precursor gases were specified as in the AEROCOM B experiment (Schulz et al., 2005<sup>2</sup>). The fifth experiment does not include any aerosol direct effects while the sixth experiment includes this effect. Thus, the difference between experiments 5 and 6 evaluates changes in cloud liquid water path and whole and clear sky forcing associated with the absorption and scattering by aerosols.

The aerosol scheme in the LMD-Z model used a mass-based scheme and an assumed size distribution for each aerosol type with the sulfur-cycle as described by Boucher et al. (2002) and formulations for sea-salt, black carbon, organic matter, and dust described by Reddy et al. (2005). In CAM-Oslo, the background aerosol consists of 5 different aerosol types each with multiple components that are either externally or internally mixed dust or sea salt modes which are represented by multimodal log-normal size distributions. Sulfate, OC and BC modify these size distributions as they become internally mixed with the background aerosol (Iversen and Seland, 2002; Kirkevåg and Iversen, 2002; Storelvmo et al., 2005<sup>1</sup>). In the CCSR model, the sulfate aerosol scheme follows that described in Takemura et al. (2002). 50% of fossil fuel BC is treated as externally mixed, while the other carbonaceous particles are internally mixed with sulfate aerosol. Soil dust and sea salt mixing ratios are followed in several size bins (Takemura et al., 2002).

<sup>2</sup>Schulz, M., Textor, C., Kinne, S., Balkanski, Y., Bauer, S., Bernsten, T., Berglen, T., Boucher, O., Dentener, F., Grini, A., Guibert, S., Iversen, T., Koch, D., Kirkevåg, A., Liu, X., Montanaro, V., Myhre, G., Penner, J. E., Pitari, G., Reddy, S., Seland, Ø., Stier, P., and Takemura, T.: Radiative forcing by aerosols as derived from the AeroCom present-day and pre-industrial simulations, Atmos. Chem. Phys. Discuss., in preparation, 2005.

**Indirect aerosol effects**

J. E. Penner et al.

[Title Page](#)[Abstract](#)[Introduction](#)[Conclusions](#)[References](#)[Tables](#)[Figures](#)[◀](#)[▶](#)[◀](#)[▶](#)[Back](#)[Close](#)[Full Screen / Esc](#)[Printer-friendly Version](#)[Interactive Discussion](#)

### 3 Results

Table 3 summarizes the outgoing shortwave radiation for the whole sky and clear sky for the present day simulations (labeled “a”) as well as the difference in whole sky and clear sky outgoing shortwave radiation between the present day and pre-industrial simulations (labeled “a-b”) for each model and each experiment. The table also shows the cloud forcing and the difference in cloud forcing between the present day and pre-industrial runs. The cloud forcing is defined as the difference between the whole sky and clear sky outgoing shortwave radiation. Below, we discuss the results from each experiment in turn.

#### 3.1 Experiment 1: influence of cloud variability

Figure 1 shows a latitude/longitude graph of the grid-average total liquid water path predicted by the CAM-Oslo and CCSR models for experiment 1a. We also show the inferred liquid water path from the SSMI instrument (Weng and Grody, 1994; Greenwald et al., 1993) and from the MODIS instrument (Platnick et al., 2003). We note that the liquid water path for the LMD-Z model was not available as a separate diagnostic, and hence we plot the sum of the liquid and ice water path for this model together with the summed liquid and ice water path from MODIS. Figure 2a shows the global average liquid water and ice water path for each of the present day experiments as well as the total liquid water path for the CAM-Oslo and CCSR models. The change in liquid water path between the present day and pre-industrial simulations is shown in Fig. 2b. Here, and in the following, we assume that the change in liquid and ice water path in the LMD-Z model is primarily due to the change in liquid water path. This seems likely since the changes introduced in the present day and pre-industrial simulations were only applied to the liquid water field and since in the CAM-Oslo and CCSR models the change in total liquid and ice water is similar to the change in total liquid water for each of the experiments. The global average liquid water path in experiment 1a ranges from  $0.05 \text{ kg m}^{-2}$  for CAM-Oslo to  $0.09 \text{ kg m}^{-2}$  for CCSR. The total liquid plus

Title Page

Abstract

Introduction

Conclusions

References

Tables

Figures

◀

▶

◀

▶

Back

Close

Full Screen / Esc

Printer-friendly Version

Interactive Discussion

**Indirect aerosol effects**

J. E. Penner et al.

Title Page

Abstract

Introduction

Conclusions

References

Tables

Figures

◀

▶

◀

▶

Back

Close

Full Screen / Esc

Printer-friendly Version

Interactive Discussion

ice water path in experiment 1a ranges from  $0.08 \text{ kg m}^{-2}$  in the CAM-Oslo model to about  $0.14 \text{ kg m}^{-2}$  for both the CCSR and LMD-Z models. The cloud forcing in the present day simulations should reflect these different values in liquid water path as well as the predicted droplet effective radius in each model. Figure 3 shows the predicted droplet number concentrations from the model level closest to 850 hPa, while Fig. 4 shows the predicted effective radius near 850 hPa from all the models. The droplet number concentration predicted in the CAM model near 850 mb is somewhat higher than that in the LMD-Z and CCSR models ( $159 \text{ cm}^{-3}$  versus  $120 \text{ cm}^{-3}$  and  $119 \text{ cm}^{-3}$ , respectively). A somewhat larger cloud droplet number in CAM is expected, since the specified aerosol concentrations had a scale height of 2 km, and the nearest level of the CAM-Oslo model to 850 hPa is actually at about 867 hPa. The smaller liquid water path in CAM-Oslo, however, leads to an effective radius in the model near 850 hPa which is similar to that in the LMD-Z model ( $7.4 \mu\text{m}$  in CAM-Oslo versus  $7.2 \mu\text{m}$  in LMD-Z). The effective radius in the CCSR model near 850 hPa is somewhat larger,  $10.4 \mu\text{m}$ , but this larger effective radius is expected given the higher liquid water path at this level than that in the CAM-Oslo model ( $0.02 \text{ kg m}^{-2}$  versus  $0.009 \text{ kg m}^{-2}$  in CAM-Oslo).

The similar droplet effective radii in each of the models lead to similar radiative fluxes. The shortwave cloud forcing (calculated as the difference between the whole sky net outgoing shortwave radiation and the clear sky net outgoing shortwave radiation) for the present-day simulation (experiment 1a) for the three models is:  $-51 \text{ Wm}^{-2}$  for CAM-Oslo,  $-62 \text{ Wm}^{-2}$  for LMD-Z, and  $-52 \text{ Wm}^{-2}$  for CCSR (see Fig. 5a).

The change in net outgoing whole sky shortwave radiation between present day and pre-industrial simulations for experiment 1 is a measure of the first indirect effect in these models, since direct aerosol radiative heating effects were not included and since the autoconversion rate for precipitation formation did not depend on the droplet number concentration. Figure 5b shows the change in net outgoing whole sky shortwave radiation for each experiment. It is gratifying that the value for the change in net outgoing shortwave radiation between present day and pre-industrial simulations for experiment 1 is similar for all of the models, namely,  $-0.65 \text{ Wm}^{-2}$  for CAM-Oslo,

$-0.68 \text{ Wm}^{-2}$  for LMD-Z, and  $-0.74 \text{ Wm}^{-2}$  for CCSR. The magnitude of the change in net outgoing shortwave radiation in experiment 1 (Fig. 5b) for each model follows the relative magnitudes for the change in effective radius (Fig. 4b) in each of the models. We note that the change in liquid water path should not be very large between present-day and pre-industrial simulations in experiments 1 and 2, since there is no affect of the aerosols on the precipitation rates. Thus, any change in total liquid water path between experiments 1a and 1b or between experiments 2a and 2b is a measure of the natural variability in the model. These changes are largest for the CCSR model in experiment 1 (about 0.5%) and for the CAM-Oslo model in experiment 2 (0.6%).

### 3.2 Experiment 2: influence of CDNC parameterization

Experiment 2 differs from experiment 1 because it allows each model to choose their own parameterization for converting the fixed aerosol concentrations and size distributions to droplet number concentrations. As a result the present day droplet number in experiment 2 increases from  $120 \text{ cm}^{-3}$  near 850 hPa in experiment 1 to  $147 \text{ cm}^{-3}$  in experiment 2 in the LMD-Z model, but decreases from  $159 \text{ cm}^{-3}$  and  $119 \text{ cm}^{-3}$  in experiment 1 to  $80 \text{ cm}^{-3}$  and  $35 \text{ cm}^{-3}$  in experiment 2 in the CAM-Oslo and CCSR models, respectively. Because the change in the liquid water path is small, the change in the effective radius between the present day simulations for experiment 2 and experiment 1 is in the opposite direction: smaller in the LMD-Z model in experiment 2 compared to experiment 1 and larger in the CAM-Oslo and CCSR models (Fig. 4a). Nevertheless, the change in effective radius between the present day and pre-industrial simulations in experiment 2 is nearly the same as that in experiment 1 for the LMD-Z and CAM-Oslo models (Fig. 4b) and the resulting change in net outgoing shortwave radiation between the present day and pre-industrial simulations is also nearly the same as for experiment 1 for the LMD-Z and CAM-Oslo models (Table 3). The larger liquid water path in the CCSR model together with its smaller predicted cloud droplet number concentration (Fig. 3a) in experiment 2 compared to experiment 1 leads to a larger

[Title Page](#)[Abstract](#)[Introduction](#)[Conclusions](#)[References](#)[Tables](#)[Figures](#)[◀](#)[▶](#)[◀](#)[▶](#)[Back](#)[Close](#)[Full Screen / Esc](#)[Printer-friendly Version](#)[Interactive Discussion](#)

**Indirect aerosol effects**

J. E. Penner et al.

[Title Page](#)[Abstract](#)[Introduction](#)[Conclusions](#)[References](#)[Tables](#)[Figures](#)[◀](#)[▶](#)[◀](#)[▶](#)[Back](#)[Close](#)[Full Screen / Esc](#)[Printer-friendly Version](#)[Interactive Discussion](#)

effective radius in the present day in experiment 2 (Fig. 4a). This leads to a change in effective radius for the CCSR model in experiment 2 that is about  $0.1 \mu\text{m}$  smaller than the change in effective radius in experiment 1 (Fig. 4b). The difference in net outgoing shortwave radiation between the present day and pre-industrial simulations changes from  $-0.60 \text{ Wm}^{-2}$  to  $-0.68 \text{ Wm}^{-2}$  and from  $-0.65 \text{ Wm}^{-2}$  to  $-0.72 \text{ Wm}^{-2}$  in the LMD-Z and CAM-Oslo models, respectively, but is reduced from  $-0.74 \text{ Wm}^{-2}$  to  $-0.22 \text{ Wm}^{-2}$  in the CCSR model, consistent with the smaller change in effective radius in this model. Even though the global average change in net outgoing shortwave radiation for the CAM-Oslo model is similar in experiment 1 and experiment 2, the spatial patterns of the cloud forcing differ. The Abdul-Razzak and Ghan (2000) cloud droplet parameterization used in experiment 2 leads a stronger forcing in the major biomass burning regions in Africa and South America than does the Boucher and Lohmann (1995) parameterization used in experiment 1. The CCSR model also used the Abdul-Razzak and Ghan (2000) parameterization and shows a similar change in the spatial pattern.

### 3.3 Experiment 3: influence of cloud lifetime effect

The third experiment introduced the effect of aerosols on the precipitation efficiency, specifying the use of the Khairoutdinov and Kogan (2000) formulation for autoconversion. The liquid water path in the present day simulations for experiment 3 increases compared to experiment 2 in the CAM-Oslo and LMD-Z models but the increase is much larger for the LMD-Z model than that for the CAM-Oslo model (compare experiment 3 with experiment 2 in Fig. 2a). The liquid water path decreases in the CCSR model. These contrasting responses in liquid water path are related to the droplet number concentrations in each model. While the LMD-Z and CAM-Oslo models have droplet number concentrations that, on average, vary from  $75$  to  $150 \text{ cm}^{-3}$ , the CCSR model has droplet number concentrations that are as low as  $15 \text{ cm}^{-3}$  near the tops of clouds. Figures 6a and b show the autoconversion rates for the Khairoutdinov and Kogan (2000) scheme and the Sundquist (1978) scheme for droplet number concentrations of  $100 \text{ cm}^{-3}$  and  $15 \text{ cm}^{-3}$ , respectively. The scale for the liquid water content



in Fig. 6b emphasizes the region of liquid water contents that are typical in the models. The autoconversion rate in the Khairoutdinov and Kogan (2000) scheme for droplet numbers similar to those predicted in the LMD-Z and CAM-Oslo models is significantly smaller than that from the Sundquist (1978) scheme specified in experiments 1 and 2, while the rates for the Khairoutdinov and Kogan (2000) scheme are larger than those from the Sundquist (1978) scheme for droplet number concentrations and liquid water contents similar to those in the CCSR model. The present-day cloud droplet number concentrations remain similar to the values predicted in experiment 2, as expected, since the cloud droplet parameterization was not changed (Fig. 3a). There is an increase in the present day effective radius near 850 hPa in experiment 3 for the CAM-Oslo and LMD-Z models compared to experiment 2 which is associated with the increase in liquid water path (Fig. 4a). The decrease in the present-day liquid water path in the CCSR model in experiment 3 compared to experiment 2 leads to a decrease in the cloud droplet effective radius near 850 hPa as expected (compare Figs. 2a and 4a).

The change in grid average liquid water path between the present day and pre-industrial simulations is a measure of how important the changes in liquid water content, cloud height and cloud fraction that are induced by changes in precipitation efficiency are in each model. The change in liquid water path between present day and pre-industrial simulations in the CAM-Oslo model,  $0.0057 \text{ kg m}^{-2}$ , is a factor of 4.7 and 3.2 larger than that in the LMD-Z and CCSR models, respectively, but all models predict an increase in global average liquid water path, consistent with other model simulations of the 2nd indirect effect (i.e. Lohmann et al., 2000; Jones et al., 2001; Rotstayn and Penner, 2001; Ghan et al., 2001; Menon et al., 2002; Quaas, et al., 2004; Rotstayn and Liu, 2005; Takemura et al., 2005). Figure 7 shows the global average cloud fraction and the change in cloud fraction between present day and pre-industrial simulations for each model and each experiment. We present the cloud fractions for liquid and liquid plus ice for the CAM-Oslo model, but only that for liquid water for the LMD-Z model and only that for liquid plus ice for the CCSR model. The present day cloud cover in each

**Indirect aerosol effects**

J. E. Penner et al.

Title Page

Abstract

Introduction

Conclusions

References

Tables

Figures

◀

▶

◀

▶

Back

Close

Full Screen / Esc

Printer-friendly Version

Interactive Discussion

**Indirect aerosol effects**

J. E. Penner et al.

[Title Page](#)[Abstract](#)[Introduction](#)[Conclusions](#)[References](#)[Tables](#)[Figures](#)[◀](#)[▶](#)[◀](#)[▶](#)[Back](#)[Close](#)[Full Screen / Esc](#)[Printer-friendly Version](#)[Interactive Discussion](#)

EGU

model is similar for all experiments (Fig. 7a), but the change in cloud fraction between the present day and pre-industrial simulations is highly variable, though small (Fig. 7b). The change in cloud fraction associated with the introduction of the effect of aerosols on the precipitation efficiency is smaller (in absolute value) than that in experiment's 1 and 2 and it decreases in both CAM-Oslo and CCSR while it increases in the LMD-Z model. Since the absolute value of the changes between present day and pre-industrial simulations in experiments 1 and 2 are at least as large or larger than the change in experiment 3, the changes noted in experiment 3 must be considered to be within the natural variability of the model. Given the nature of the cloud fraction parameterizations in each of the models (Sect. 2), this is, perhaps, not surprising. Significant improvements in model procedures for predicting cloud fraction would be needed to determine whether the models can reproduce the effects on cloud fraction recently reported by Kaufmann et al. (2005).

The changes in liquid water path and effective radius result in a slightly larger change in net outgoing shortwave radiation between the present day and pre-industrial simulations in the CAM-Oslo and the LMD-Z models between experiment 2 and experiment 3, i.e. from  $-0.72 \text{ Wm}^{-2}$  to  $-0.83 \text{ Wm}^{-2}$  and from  $-0.60 \text{ Wm}^{-2}$  to  $-0.72 \text{ Wm}^{-2}$ , respectively. Thus, the 2nd indirect effect amplifies the radiative forcing in these models by only 22% in both models. The change in net outgoing shortwave radiation in the CCSR model is significantly larger in experiment 3 compared to experiment 2, changing from  $-0.22 \text{ Wm}^{-2}$  to  $-0.77 \text{ Wm}^{-2}$ . Thus, adding the 2nd indirect effect in this model amplifies the change in radiative forcing by more than a factor of 3.

### 3.4 Experiment 4: influence of autoconversion scheme

In experiment 4, each model introduced their own formulation for precipitation efficiency. These formulations were presented in Sect. 2.1 and are displayed as a function of liquid water mixing ratio for a droplet number concentration of  $100 \text{ cm}^{-3}$  in Fig. 6a and for a droplet number concentration of  $15 \text{ cm}^{-3}$  in Fig. 6b. Figure 6a shows that the Khairoutdinov and Kogan (2000) formulation removes cloud water much more slowly

than does the formulation preferred in the CAM-Oslo and LMD-Z models. This implies a decrease in the liquid water path between experiment 3 and experiment 4 in LMD-Z and CAM-Oslo, and this is indeed the case (Fig. 2a). Nevertheless, the change in liquid water path between present day and pre-industrial simulations is larger in the LMD-Z model than it was in experiment 3, but smaller in the CAM-Oslo model. This is consistent with the much larger change in cloud droplet number concentration near 850 hPa in the LMD-Z model compared to that in the CAM-Oslo model (Fig. 3b) together with the much more sensitive change in precipitation formation rate for both models in experiment 4 compared to experiment 3 (Fig. 6a). The difference in the change in net outgoing shortwave radiation between present day and pre-industrial simulations (Fig. 5) between experiment 4 and experiment 3 follows the predicted changes in liquid water path (Fig. 2b) and effective radius (Fig. 4b) for LMD-Z and CAM-Oslo. Thus, even though the change in effective radius is larger (smaller) in CAM-Oslo (LMD-Z) in experiment 4 compared to experiment 3, it is the change in liquid water path between the present day and pre-industrial simulations which is smaller (larger) in CAM-Oslo (LMD-Z) in experiment 4 compared to experiment 3 which dominates the change in net outgoing shortwave radiation.

The CCSR model has a much smaller droplet number concentration, especially at the upper levels in the cloud (about  $15 \text{ cm}^{-3}$ , on average). The autoconversion rate normally used in the CCSR model for  $N_d = 15 \text{ cm}^{-3}$  is smaller than that for the Khairoutdinov and Kogan (2000) scheme (Fig. 6b) and, as a result, the liquid water path in experiment 4 is larger than it was in experiment 3 (Fig. 2a). The change in liquid water path in experiment 4 is much smaller than the change in liquid water path in experiment 3, and, in fact, the small change in experiment 4 is actually within the noise of the model (since it is similar in magnitude to the change in liquid water path in experiments 1 and 2). Nevertheless, the change in effective radius in experiment 4 in this model is significantly larger than that in experiment 3 (i.e.  $-0.51 \mu\text{m}$  near 850 hPa in experiment 4 compared to  $-0.29 \mu\text{m}$  in experiment 3). The change in net outgoing shortwave radiation between the present day and pre-industrial simulations is domi-

**Indirect aerosol effects**

J. E. Penner et al.

Title Page

Abstract

Introduction

Conclusions

References

Tables

Figures

◀

▶

◀

▶

Back

Close

Full Screen / Esc

Printer-friendly Version

Interactive Discussion

nated by the change in liquid water path rather than the change in effective radius. Thus the change in net outgoing shortwave radiation between the present day and pre-industrial simulations is smaller in experiment 4 than it was in experiment 3.

### 3.5 Experiment 5: influence of calculated aerosol distribution

In experiment 5, each model calculated the radiative forcing using their individual precipitation formation schemes as well as their individual aerosol concentrations, but with common specified sources. The difference in the change in net outgoing shortwave radiation between the present day and pre-industrial simulations is larger between experiments 4 and 5 for both the CAM-Oslo and CCSR models than between any of the other pairs of experiments. The change in net outgoing shortwave radiation for the CAM-Oslo model decreases from  $-0.58 \text{ Wm}^{-2}$  to  $-0.36 \text{ Wm}^{-2}$  while in the CCSR model it increases from  $-0.35 \text{ Wm}^{-2}$  to  $-1.39 \text{ Wm}^{-2}$ . In the LMD-Z model, the change in net outgoing shortwave radiation in going from experiment 3 to experiment 4 is somewhat larger ( $-0.47 \text{ Wm}^{-2}$ ) than it is in going from experiment 4 to experiment 5 ( $-0.29 \text{ Wm}^{-2}$ ) but the change between experiment 4 and experiment 5 is still significant relative to the other changes introduced in these experiments. These changes are caused by large changes in the change in droplet concentrations (Fig. 3b) between the present day and pre-industrial simulations for experiment 5 compared to experiment 4, which are simply due to the large changes in present day and pre-industrial aerosols calculated by each of the models. Thus, within any one model, the change in net outgoing shortwave radiation is most sensitive to the calculation of individual aerosol fields than to any of the other parameters in the cloud scheme. The change in cloud droplet number concentration and effective radius between the present day and pre-industrial simulations in going from experiment 4 to experiment 5 is largest in the LMD-Z model followed by the changes in the CCSR model. The change in net outgoing shortwave radiation in experiment 5 for the LMD-Z model ( $-1.48 \text{ Wm}^{-2}$ ) is also larger than that for the CCSR model ( $-1.39 \text{ Wm}^{-2}$ ) even though the liquid water path change in going from experiment 4 to experiment 5 is larger in the CCSR model. Apparently the larger change in

## Indirect aerosol effects

J. E. Penner et al.

Title Page

Abstract

Introduction

Conclusions

References

Tables

Figures

◀

▶

◀

▶

Back

Close

Full Screen / Esc

Printer-friendly Version

Interactive Discussion

**Indirect aerosol effects**

J. E. Penner et al.

[Title Page](#)[Abstract](#)[Introduction](#)[Conclusions](#)[References](#)[Tables](#)[Figures](#)[I◀](#)[▶I](#)[◀](#)[▶](#)[Back](#)[Close](#)[Full Screen / Esc](#)[Printer-friendly Version](#)[Interactive Discussion](#)

effective radius in going from experiment 4 to experiment 5 in the LMD-Z model outweighs the larger change in liquid water path in the CCSR model. It is interesting that the larger changes in droplet number concentrations predicted for the present day and pre-industrial simulations in this experiment in the LMD-Z and CCSR models have led to a larger increase in the average change in liquid water path and cloud fraction in the CCSR model and this leads to a larger difference between experiment 4 and experiment 5 in the response of the net outgoing shortwave radiation between the present day and pre-industrial simulation in CCSR. The CCSR autoconversion scheme is more sensitive to changes in droplet number concentrations than is the LMD-Z scheme and this explains the more sensitive response of the liquid water path in this model in going from experiment 4 to experiment 5. In addition, the inclusion of the collection of cloud droplets by falling rain (accretion) in this model enhances any sensitivity of the liquid water path to changes in droplet number. The change in the droplet concentration near 850 hPa is somewhat smaller in experiment 5 compared to that in experiment 4 in the CAM-Oslo model as is the change in the liquid water path, while the change in the effective radius is similar to that in experiment 4. As a result the change in net outgoing shortwave radiation is smaller for this model in experiment 5 than it is in experiment 4.

### 3.6 Experiment 6: influence of aerosol direct effect

Experiment 6 was designed to determine the effect of including the heating by aerosols on clouds in the models. Including this effect has a large impact on the change in cloud forcing (see Table 3) between the present day and pre-industrial simulations in all the models even though the change in the liquid water path (Fig. 2b) and the effective radius (Fig. 4b) is similar in both experiments 5 and 6. The change in absorbed solar radiation between the present day and pre-industrial simulations was  $0.74 \text{ Wm}^{-2}$ ,  $1.37 \text{ Wm}^{-2}$ , and  $3.86 \text{ Wm}^{-2}$  in CAM-Oslo, LMD-Z, and CCSR, respectively, but the change in cloud fraction is smaller than that which can be explained by natural variability in the models (Fig. 7b) so the effect of this absorbed radiation on clouds is apparently quite small in these models. The change in net outgoing shortwave radiation between

**Indirect aerosol effects**

J. E. Penner et al.

[Title Page](#)[Abstract](#)[Introduction](#)[Conclusions](#)[References](#)[Tables](#)[Figures](#)[◀](#)[▶](#)[◀](#)[▶](#)[Back](#)[Close](#)[Full Screen / Esc](#)[Printer-friendly Version](#)[Interactive Discussion](#)

the present day and the pre-industrial simulations is slightly larger in experiment 6 compared to experiment 5 in CAM-Oslo and LMD-Z, because the change in net outgoing clear sky radiation is fairly large in these models in experiment 6 ( $-0.57 \text{ Wm}^{-2}$  and  $-1.03 \text{ Wm}^{-2}$ , respectively). The change in net outgoing radiation in the CCSR model, on the other hand, is slightly smaller in experiment 6 than it was in experiment 5 despite a large clear sky forcing ( $-1.17 \text{ Wm}^{-2}$ ). This is mainly caused by a decrease in the change in liquid water path (Fig. 2b) in this model which differs from the response of the other models to the change in radiative heating induced by the direct forcing of the aerosols. The clear sky shortwave forcing in the CAM-Oslo, LMD-Z, and CCSR models is  $-0.57$ ,  $-1.03$  and  $-1.17 \text{ Wm}^{-2}$ , respectively. When these values are subtracted from the respective whole sky forcing values ( $-0.52 \text{ Wm}^{-2}$ ,  $-1.55 \text{ Wm}^{-2}$ , and  $-1.37 \text{ Wm}^{-2}$ , respectively), all models result in a significant decrease in the (negative) change in cloud forcing associated with experiment 5 (see Table 3). Thus, the large changes in cloud forcing between experiments 5 and 6 shown in Table 3 result from a combination of the changes in liquid water path and the large negative values in the change in clear sky outgoing radiation in experiment 6.

#### 4 Discussion and conclusions

The purpose of this paper was to compare the results from several GCMs in a set of controlled experiments in order to determine the most important uncertainties in the treatment of aerosol-cloud interactions. We started with a controlled experiment with a fixed aerosol distribution and prescribed CDNC parameterization and an autoconversion scheme that only depends on the in-cloud liquid water mixing ratio (not on the droplet number or cloud droplet effective radius). This experiment showed that the modeled liquid water path varied significantly (by almost a factor of two) between the basic GCMs. This variation is partly explained by the different cloud fraction schemes in the models and may also be associated with other basic differences in the models. All models show patterns of liquid or liquid plus ice water path that are similar to satel-

lite observations, but the difference between global average liquid water path or liquid plus ice water path (for LMD-Z) and that measured by MODIS, for example, is  $-28\%$ ,  $43\%$ , and  $40\%$  for CAM-Oslo, LMD-Z, and CCSR, respectively. The comparison to satellite liquid water path is improved to  $-16\%$  for the CAM-Oslo model when using their own aerosols and cloud microphysics schemes in experiment 6, but is degraded to  $59\%$  and  $71\%$  in the LMD-Z and CCSR models, respectively.

The first experiment did not result in large changes in liquid water path between the present day and pre-industrial simulations, as expected, but the differences in present-day liquid water path among the models lead to substantial differences in the effective radii of clouds near 850 hPa, and substantial differences in the change in effective radius between the present day and pre-industrial simulations. Nevertheless, compensations within the radiation and cloud fraction schemes lead to very similar changes in net outgoing shortwave radiation in this experiment.

In the second experiment each modeler used their own CDNC parameterization. But these separate parameterizations led to only small changes in the global average change in net outgoing shortwave radiation in the CAM-Oslo and LMD-Z models, with more substantial changes in the CCSR model. Thus, the method of parameterization of CDNC can have a large impact on the calculation of the first indirect effect in at least some models, though it was not a primary uncertainty in the determination of the global average first indirect effect in the study by Chen and Penner (2005).

The third experiment introduced the effect of changes in precipitation efficiency for each of the models. The total liquid water path increased in both the CAM-Oslo and LMD-Z models which was expected because the specified autoconversion parameterization rate in experiments 1 and 2 was much stronger than that specified in experiment 3 (compare Sundquist, 1978, scheme in Fig. 6 with that from Khairoutdinov and Kogan, 2000). But the change in liquid water path was much larger for LMD-Z (increase by almost a factor of 2) than it was for CAM. Figure 6 shows that a model with higher liquid water mixing ratio should be more sensitive to the change in autoconversion parameterization. This is indeed the case. The LMD-Z model has a larger liquid water

**Indirect aerosol effects**

J. E. Penner et al.

Title Page

Abstract

Introduction

Conclusions

References

Tables

Figures

◀

▶

◀

▶

Back

Close

Full Screen / Esc

Printer-friendly Version

Interactive Discussion

path than the CAM-Oslo model, and its liquid water path in the present-day simulation increases more when using the Khairoutdinov and Kogan (2000) scheme. However, even though the CCSR model also has a larger liquid water path than does the CAM-Oslo model, its present day liquid water path in experiment 3 is actually smaller than that in experiment 2. Since the CAM-Oslo and LMD-Z models did not include collection of droplets by falling rain and snow in these experiments, they are apparently less sensitive to the autoconversion parameterization than is the CCSR model which includes these additional loss processes.

The present day minus pre-industrial change in net outgoing shortwave radiation increases (becomes more negative) in all models in going from experiment 2 to 3. The relative increase is small (on average only 22%) for the CAM-Oslo and LMD-Z models but it is more than a factor of 3 for the CCSR model. Thus, even for the rather large change in autoconversion rates (Fig. 6), the 2nd indirect effect is rather small in two of the models. Nevertheless, when modelers' introduced their own autoconversion schemes, in experiment 4, both larger (LMD-Z) and smaller (CAM-Oslo) changes in net outgoing shortwave radiation compared to experiment 3 are apparent. Even though both the LMD-Z and CAM-Oslo autoconversion schemes are more sensitive to changes in droplet concentration than that expected using the Khairoutdinov and Kogan (2000) scheme, the larger liquid water path in the LMD-Z model causes it to respond significantly to this change in autoconversion rate, while the CAM-Oslo model change in liquid water path and net outgoing shortwave radiation in experiment 4 is actually smaller than that in experiment 3. This result is consistent with the much smaller change in liquid water path predicted in experiment 4 in the CAM-Oslo model relative to experiment 3 which was caused by the fact that collection of cloud droplets by falling rain and snow was included in experiment 4, but not in experiment 3. The CCSR model had a smaller change in liquid water path in experiment 4 compared to experiment 3 which apparently outweighs its change in cloud droplet effective radius which was much larger in experiment 4 than it was in experiment 3. This leads to a smaller change in net outgoing radiation in this model in experiment 4 compared to experiment 3, similar

**Indirect aerosol effects**

J. E. Penner et al.

[Title Page](#)[Abstract](#)[Introduction](#)[Conclusions](#)[References](#)[Tables](#)[Figures](#)[◀](#)[▶](#)[◀](#)[▶](#)[Back](#)[Close](#)[Full Screen / Esc](#)[Printer-friendly Version](#)[Interactive Discussion](#)



to the response of the CAM-Oslo model.

In experiment 5, prescribed aerosol sources were specified, but each modeler used their own method to compute aerosol concentrations (as well as their own method for the CDNC parameterization and autoconversion parameterization). This change introduced the largest differences in the change in net outgoing shortwave radiation between the models. Thus, the prediction of aerosol number concentration appears to introduce the largest uncertainty in calculation of the aerosol indirect effect among these models.

In experiment 6, we introduced the aerosol heating profile within the models, however, the average liquid water path for each of the models in experiment 6 was very similar to that in experiment 5. Nevertheless, the difference in liquid water path between the present day and pre-industrial simulations was somewhat larger in both the LMD-Z and CAM-Oslo models than it was in experiment 5. The change in the liquid water path in the CCSR model was somewhat smaller than that in experiment 5. These relative changes between the liquid water path change in experiment 5 and experiment 6 are smaller than the natural variability within the models.

These experiments point out the need to improve the representation of liquid water path in the models, especially in light of upcoming new measurements that should provide a more quantitative measure of this field (Stephens et al., 2002). The effect of changing the autoconversion scheme can have important effects especially in models with large liquid water path. There is also clearly a need to improve the parameterization of cloud fraction within the models both in order to improve the calculation of the 2nd indirect effect, as discussed here, as well as to improve the computation of the first indirect effect (Chen and Penner, 2005). Finally, the prediction of aerosol concentrations given a fixed set of sources leads to the largest uncertainties in the indirect aerosol effect. Thus, in spite of decreases in the differences in aerosol fields in current models compared to models in the past (Kinne et al., 2005; Penner et al., 2001), there is still a need to improve these basic fields in order to improve the prediction of aerosol indirect effects.

**Indirect aerosol effects**

J. E. Penner et al.

Title Page

Abstract

Introduction

Conclusions

References

Tables

Figures

◀

▶

◀

▶

Back

Close

Full Screen / Esc

Printer-friendly Version

Interactive Discussion

*Acknowledgements.* We are grateful to P. DeCola and the NASA ACPMAP program for encouragement and the support to carry out this study. Partial support from the DOE ARM program is also gratefully acknowledged. A number of people helped to suggest the specific diagnostics used in this study including U. Lohmann, L. Rotstajn, S. Menon, M. Prather, T. Nenes, and P. Adams. We would also like to thank K. Taylor for helping to set up his diagnostic tool CMOR for our use and M. Schultz and S. Kinne for their contribution in posting our model experiment on the AEROCOM website and for encouraging this work. T. Storelvmo also thanks T. Iversen for his help and encouragement with the experiments performed with the CAM-Oslo model.

## References

- 10 Abdul-Razzak, H. and Ghan, S. J.: A parameterization of aerosol activation, 2. Multiple aerosol types, *J. Geophys. Res.*, 105, D5, 6837- 6844, 2000.
- Ackerman, A. S., Toon, O. B., Stevens, D. E., Heymsfield, A. J., Ramanathan, V., and Welton, E. J.: Reduction of tropical cloudiness by soot, *Science*, 245, 1227–1230, 1989.
- Ackerman, A. S., Kirkpatrick, M. P., Stevens, D. E., and Toon, O. B.: The impact of humidity  
15 above stratiform clouds on indirect aerosol climate forcing, *Nature*, 432 (7020), 1014–1017. 2004.
- Arakawa, A. and Schubert, W. H.: Interaction of a cumulus cloud ensemble with large-scale environment, 1. *J. Atmos. Sci.*, 31 (3), 674–701, 1974.
- Berry, E. X.: Cloud droplet growth by collection, *J. Atmos. Sci.*, 24, 688–701, 1967.
- 20 Boucher, O. and Lohmann, U.: The sulfate-CCN-cloud albedo effect – a sensitivity study with two general circulation models, *Tellus* 47B, 281–200, 1995.
- Boucher, O., Le Treut, H., and Baker, M. B.: Precipitation and radiation modeling in a general circulation model: Introduction of cloud microphysical processes, *J. Geophys. Res.* 100, 16 395–16 414, 1995.
- 25 Boucher, O., Pham, M., and Venkataraman, C.: Simulation of the atmospheric sulfur cycle in the Laboratoire de Météorologie Dynamique General Circulation Model, Model description, model evaluation, and global and European budgets, in: *Note scientifique de l'IPSL*, edited by: Boulanger, J.-P. and Li, Z.-X., vol. 21, IPSL, Paris, 26, 2002.
- Bréon, F.-M., Tanré, D., and Generoso, S.: Aerosol effect on cloud droplet size monitored from  
30 satellite, *Science*, 295, 834–838, 2002.

Title Page

Abstract

Introduction

Conclusions

References

Tables

Figures

◀

▶

◀

▶

Back

Close

Full Screen / Esc

Printer-friendly Version

Interactive Discussion

- Chen, C. and Cotton, W. R.: The physics of the marine stratocumulus-capped mixed layer, *J. Atmos. Sci*, 44, 2951–2977, 1987.
- Chen, Y. and Penner, J. E.: Uncertainty analysis for estimates of the first indirect effect, *Atmos. Chem. Phys.*, 5, 2935-2948, 2005.
- 5 Feingold, G., Eberhard, W. L., Veron, D. E., and Previdi, M.: First measurements of the Twomey indirect effect using ground-based remote sensors, *Geophys. Res. Lett.*, 30 (6), doi:10.1029/2002GL016633, 2003.
- Feingold, G., Jiang, J. H., and Harrington, J. Y.: On smoke suppression of clouds in Amazonia, *Geophys. Res. Lett.*, 32, L02804, doi:10.1029/2004GL021369, 2005.
- 10 Ghan, S. J., Leung, L. R., Easter, R. C., and Abdul-Razzak, H.: Prediction of cloud droplet number in a general circulation model, *J. Geophys. Res.*, 102 (D18), 21 777–21 794, 1997.
- Ghan, S. J., Easter, R. C., Chapman, E., Abdul-Razzak, H., Zhang, Y., Leung, R., Laulainen, N., Saylor, R., and Zaveri, R.: A physically-based estimate of radiative forcing by anthropogenic sulfate aerosols, *J. Geophys. Res.*, 106, 5279–5293, 2001.
- 15 Greenwald, T. J., Stephens, G. L., Vander Haar, T. H., and Jackson, D. L.: A physical retrieval of cloud liquid water over the global oceans using special sensor microwave/imager (SSM/I) observations, *J. Geophys. Res.*, 98, 18 471–18 488, 1993.
- Hack, J. J.: Parameterization of moist convection in the NCAR Community Climate Model, CCM2. *J. Geophys. Res.*, 99, 5551–5568, 1994.
- 20 Hansen, J. E., Sato, M., and Ruedy, R.: Radiative forcing and climate response, *J. Geophys. Res.*, 102, 6831–6864, 1997.
- Hasumi, H. and Emori, S.: K-1 coupled GCM (MIROC) description, K-1 Technical Report, No. 1, CCSR/NIES/FRCGC, Tokyo, Japan, 2004.
- Iversen, T. and Seland, Ø.: A scheme for process-tagged SO<sub>4</sub> and BC aerosols in NCAR CCM3. Validation and sensitivity to cloud processes, *J. Geophys. Res.*, 107(D24), doi:10.1029/2001JD000885, 2002.
- 25 Jones, A., Roberts, D. L., and Woodage, M. J.: Indirect sulphate aerosol forcing in a climate model with an interactive sulphur cycle, *J. Geophys. Res.*, 106, 20 293–30 310, 2001.
- Kaufman, Y. J., Koren, I., Remer, L. A., Rosenfeld, D., and Rudich, Y.: The effect of smoke, dust, and pollution aerosol on shallow cloud development over the Atlantic Ocean, *Proc. National Acad. Sci. USA*, 102 (32), 11 207–11 212, 2005.
- 30 Khairoutdinov, M. and Kogan, Y.: A new cloud physics parameterization in a large eddy simulation model of marine stratocumulus, *Mon. Weath. Rev.*, 128, 229–243, 2000.

**Indirect aerosol effects**

J. E. Penner et al.

Title Page

Abstract

Introduction

Conclusions

References

Tables

Figures

◀

▶

◀

▶

Back

Close

Full Screen / Esc

Printer-friendly Version

Interactive Discussion

**Indirect aerosol effects**

J. E. Penner et al.

[Title Page](#)[Abstract](#)[Introduction](#)[Conclusions](#)[References](#)[Tables](#)[Figures](#)[◀](#)[▶](#)[◀](#)[▶](#)[Back](#)[Close](#)[Full Screen / Esc](#)[Printer-friendly Version](#)[Interactive Discussion](#)

- Kirkevåg, A. and Iversen, T.: Global direct radiative forcing by process-parameterized aerosol optical properties, *J. Geophys. Res.*, 107(D20), doi:10.1029/2001JD000886, 2002.
- Kinne, S., Schulz, M., Textor, C., Guibert, S., Balkanski, Y., Bauer, S. E., Bernsten, T., Berglen, T. F., Boucher, O., Chin, M., Collins, W., Dentener, F., Diehl, T., Easter, R., Feichter, J., Fillmore, D., Ghan, S., Ginoux, P., Gong, S., Grini, A., Hendricks, J., Herzog, M., Horowitz, L., Isaksen, I., Iversen, T., Kirkevåg, A., Kloster, S., Koch, D., Kristjansson, J. E., Krol, M., Lauer, A., Lamarque, J. F., Lesins, G., Liu, X., Lohmann, U., Montanaro, V., Myhre, G., Penner, J., Pitari, G., Reddy, S., Seland, O., Stier, P., Takemura, T., Tie, X.: An AeroCom initial assessment – Optical properties in aerosol component modules of global models, *Atmos. Chem. Phys. Discuss.*, 5, 8285–8330, 2005.
- Klein, S. A. and Hartmann, D. L.: The seasonal cycle of low stratiform clouds, *J. Climate*, 6, 1587–1606, 1993.
- Kristjansson, J. E.: Studies of the aerosol indirect effect from sulfate and black carbon aerosols, *J. Geophys. Res.*, 107 (D20), 4246, doi:10.1029/2001JD000887, 2002.
- Le Treut, H. and Li, Z.-X.: Sensitivity of an atmospheric general circulation model to prescribed SST changes: Feedback processes associated with the simulation of cloud properties, *Clim. Dyn.* 5, 175–187, 1991.
- Li, Z.-X.: Ensemble atmospheric GCM simulation of climate interannual variability from 1979 to 1994, *J. Clim.* 12, 986–1001, 1999.
- Liou, K.-N. and Ou, S.-C.: The role of cloud microphysical processes in climate: An assessment from a one-dimensional perspective, *J. Geophys. Res.*, 94, 8599–8606, 1989.
- Lohmann, U., Feichter, J., Chuang, C. C., and Penner, J. E.: Prediction of the number of cloud droplets in the ECHAM GCM, *J. Geophys. Res.*, 104, 9169–9198, 1999.
- Lohmann, U., Feichter, J., Penner, J. E., and Leaitch, R.: Indirect effect of sulfate and carbonaceous aerosols: A mechanistic treatment, *J. Geophys. Res.*, 105, 12 193–12 206, 2000.
- Menon, S., DelGenio, A. D., Koch, D., and Tselioudis, G.: GCM Simulations of the Aerosol Indirect Effect: Sensitivity to Cloud Parameterization and Aerosol Burden, *J. Atmos. Sci.*, 59, 692–713, 2002.
- Nakajima, T., Higurashi, A., Kawamoto, K., and Penner, J. E.: A possible correlation between satellite-derived cloud and aerosol microphysical parameters, *Geophys. Res. Lett.*, 28, 1171–1174, 2001.
- Numaguti, A., Takahashi, M., Nakajima, T., and Sumi, A.: Development of an atmospheric general circulation model, in *Climate System Dynamics and Modeling*, edited by: Matsuno,

**Indirect aerosol effects**

J. E. Penner et al.

[Title Page](#)[Abstract](#)[Introduction](#)[Conclusions](#)[References](#)[Tables](#)[Figures](#)[◀](#)[▶](#)[◀](#)[▶](#)[Back](#)[Close](#)[Full Screen / Esc](#)[Printer-friendly Version](#)[Interactive Discussion](#)

- T., Cent. for Clim. Syst. Res., Univ. of Tokyo, Tokyo, 1–27, 1995.
- Penner, J. E., Andreae, M., Annegarn, H., Barrie, L., Feichter, J., Hegg, D., Jayaraman, A., Leaitch, R., Murphy, D., Nganga, J., and Pitari, G.: Aerosols, their Direct and Indirect Effects, in: *Climate Change 2001: The Scientific Basis*, edited by: Houghton, J. T., Ding, Y., Griggs, D. J., Noguer, M., Van der Linden, P. J., Dai, X., Maskell, K., and Johnson, C. A., Report to Intergovernmental Panel on Climate Change from the Scientific Assessment Working Group (WGI), Cambridge University Press, 289–416, 2001.
- Penner, J. E., Zhang, S. Y., and Chuang, C. C.: Soot and smoke aerosol may not warm climate, *J. Geophys. Res.*, 108, D21, Art. No. 4657, doi:10.1029/2003JD003409, 2003.
- Penner, J. E., Dong, X., and Chen, Y.: Observational evidence of a change in radiative forcing due to the indirect aerosol effect, *Nature*, 427, 231–234, 2004.
- Platnick, S., King, M. D., Ackerman, S. A., et al.: The MODIS cloud products: Algorithms and examples from Terra, *IEEE T. Geosci. Remote Sensing*, 41 (2), 459–473, 2003.
- Quaas, J., Boucher, O., and Bréon, F.-M.: Aerosol indirect effects in POLDER satellite data and the Laboratoire de M'et'eorologie Dynamique-Zoom (LMDZ) general circulation model, *J. Geophys. Res.*, 109, doi:10.1029/2003JD004 317, 2004.
- Rasch, P. J. and Kristjánsson, J. E.: A Comparison of the CCM3 Model Climate Using Diagnosed and Predicted Condensate Parameterizations, *J. Clim.*, 11, 1587–1614, 1998.
- Reddy, M. S., Boucher, O., Bellouin, N., Schulz, M., Balkanski, Y., Dufresne, J.-L., and Pham, M.: Estimates of multi-component aerosol optical depth and direct radiative perturbation in the LMDZT General Circulation Model, *J. Geophys. Res.*, D10S16, doi:10.1029/2004JD004757, 2005.
- Rotstayn, L. D. and Penner, J. E.: Indirect aerosol forcing, quasiforcing, and climate response, *J. Climate*, 14, 2960–2975, 2001.
- Rotstayn, L. D. and Liu, Y.: A smaller global estimate of the second indirect aerosol effect, *Geophys. Res. Lett.*, 32 (5), L05708, doi:10.1029/2004GL021922, 2005.
- Slingo, A.: The development and verification of a cloud prediction scheme for the ECMWF model, *Quart. J. Roy. Meteor. Soc.*, 113, 899–927, 1987.
- Sundqvist, H.: A parameterization scheme for non-convective condensation including prediction of cloud water content, *Quart. J. Roy. Meteor. Soc.*, 104, 677–690, 1978.
- Takemura, T., Nakajima, T., Dubovik, O., Holben, B. N., and Kinne, S.: Single scattering albedo and radiative forcing of various aerosol species with a global three-dimensional model, *J. Clim.*, 15, 333–352, 2002.

Takemura, T., Nozawa, T., Emori, S., Nakajima, T. Y., and Nakajima, T.: Simulation of climate response to aerosol direct and indirect effects with aerosol transport-radiation model, *J. Geophys. Res.*, 110, D02202, doi:10.1029/2004JD005029, 2005.

5 Tiedke, M.: A comprehensive mass-flux scheme for cumulus parameterization in large-scale models, *Mon. Weather Rev.* 117, 1779–1800, 1989.

Twomey, S.: Pollution and the planetary albedo, *Atmos. Environ.*, 8, 1251–1256, 1974.

Weng, F. and Grody, N. C.: Retrieval of cloud liquid water using the special sensor microwave imager (SSM/I), *J. Geophys. Res.*, 99, 25 535–25 551, 1994.

10 Zhang, G. J. and McFarlane, N. A.: Sensitivity of climate simulations to the parameterization of cumulus convection in the Canadian Climate Centre general circulation model, *Atmos.-Ocean*, 33, 407–446, 1995.

---

**Indirect aerosol effects**

J. E. Penner et al.

---

Title Page

Abstract

Introduction

Conclusions

References

Tables

Figures

◀

▶

◀

▶

Back

Close

Full Screen / Esc

Printer-friendly Version

Interactive Discussion

## Indirect aerosol effects

J. E. Penner et al.

**Table 1.** Description of model experiments and purpose.

Experiment	1	2	3	4	5	6
Purpose: to examine influence of:	Cloud variability	CDNC parameterization	Cloud lifetime effect	Autoconversion scheme	Aerosol distribution	Direct effect
Aerosol distributions	prescribed	prescribed	prescribed	prescribed	model's own	model's own
CDNC parameterization	BL95 "A"	model's own	model's own	model's own	model's own	model's own
Autoconversion parameterization	S78	S78	KK00	model's own	model's own	model's own
Direct radiative effect of aerosols	no	no	no	no	no	yes

BL95: Boucher and Lohmann (1995)

S78: Sundquist (1978)

KK00: Khairoutdinov and Kogan (2000)

Prescribed aerosol distributions are as in Chen and Penner (2005)

Interactive aerosols are computed using the AEROCOM emissions (<http://nansen.ipsl.jussieu.fr/AEROCOM>)

Title Page

Abstract

Introduction

Conclusions

References

Tables

Figures

◀

▶

◀

▶

Back

Close

Full Screen / Esc

Printer-friendly Version

Interactive Discussion

**Indirect aerosol  
effects**

J. E. Penner et al.

[Title Page](#)[Abstract](#)[Introduction](#)[Conclusions](#)[References](#)[Tables](#)[Figures](#)[I◀](#)[▶I](#)[◀](#)[▶](#)[Back](#)[Close](#)[Full Screen / Esc](#)[Printer-friendly Version](#)[Interactive Discussion](#)**Table 2.** Constants used in the parameterization of droplet concentrations for experiment 1.

Cloud type:	A	B
Continental stratus	174	0.257
Marine stratus	115	0.48



**Table 3.** Difference in present day and pre-industrial outgoing solar radiation.

	exp. 1	exp. 2	exp. 3	exp. 4	exp. 5	exp. 6
<b>Whole-sky</b>						
CAM-Oslo	−0.648	−0.726	−0.833	−0.580	−0.365	−0.518
LMD-Z	−0.682	−0.597	−0.722	−1.194	−1.479	−1.553
CCSR	−0.739	−0.218	−0.773	−0.350	−1.386	−1.368
<b>Clear-sky</b>						
CAM-Oslo	−0.063	−0.066	−0.026	0.014	−0.054	−0.575
LMD-Z	−0.054	0.019	0.030	−0.066	−0.126	−1.034
CCSR	0.018	−0.0068	−0.045	−0.008	0.018	−1.168
<b>Change in cloud forcing<sup>1</sup></b>						
CAM-Oslo	−0.584	−0.660	−0.807	−0.595	−0.311	0.056
LMD-Z	−0.628	−0.616	−0.752	−1.128	−1.353	−0.518
CCSR	−0.757	−0.212	−0.728	−0.342	−1.404	−0.200

<sup>1</sup>Change in cloud forcing is the difference between whole sky and clear sky outgoing radiation in the present day minus pre-industrial simulation. The large differences seen between experiments 5 and 6 are due to the inclusion of the clear sky component of aerosol scattering and absorption (the direct effect) in experiment 6.

## Indirect aerosol effects

J. E. Penner et al.

Title Page

Abstract

Introduction

Conclusions

References

Tables

Figures

◀

▶

◀

▶

Back

Close

Full Screen / Esc

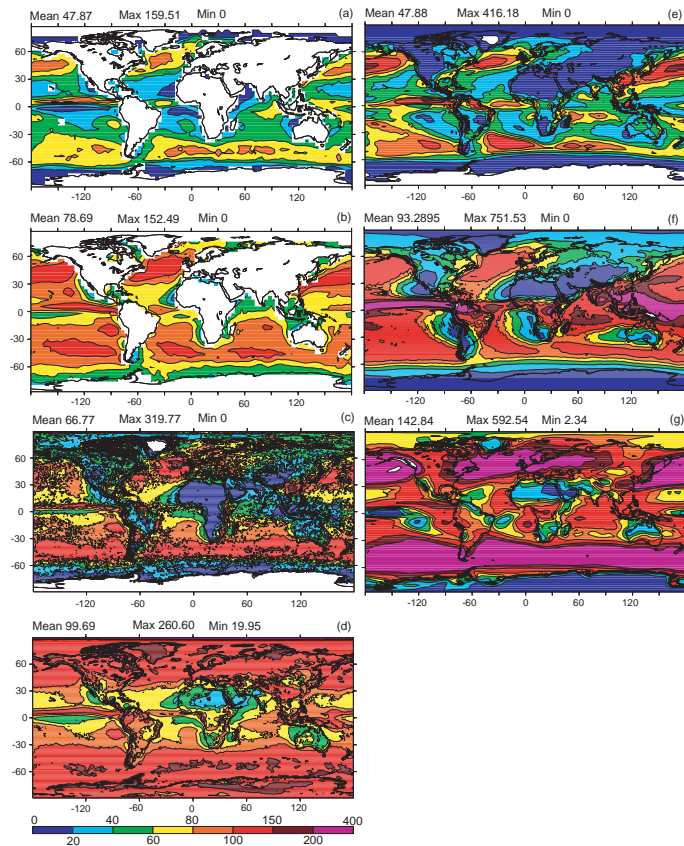
Printer-friendly Version

Interactive Discussion

EGU

## Indirect aerosol effects

J. E. Penner et al.



**Fig. 1.** Annual average cloud liquid water path in  $\text{g m}^{-2}$  as inferred from the SSM/I satellite instrument by **(a)** Weng and Grody (1993) and by **(b)** Greenwald et al. (1993), and **(c)** as inferred from the MODIS instrument for  $T > 260^\circ$  (Platnick et al., 2003). Panel **(d)** shows the liquid plus ice path from MODIS, while panels **(f)** and **(g)** show the liquid water path from the CAM-Oslo and CCSR models in experiment 1a, respectively. Panel **(h)** shows the liquid plus ice path in the LMD-Z model in experiment.

Title Page

Abstract

Introduction

Conclusions

References

Tables

Figures

◀

▶

◀

▶

Back

Close

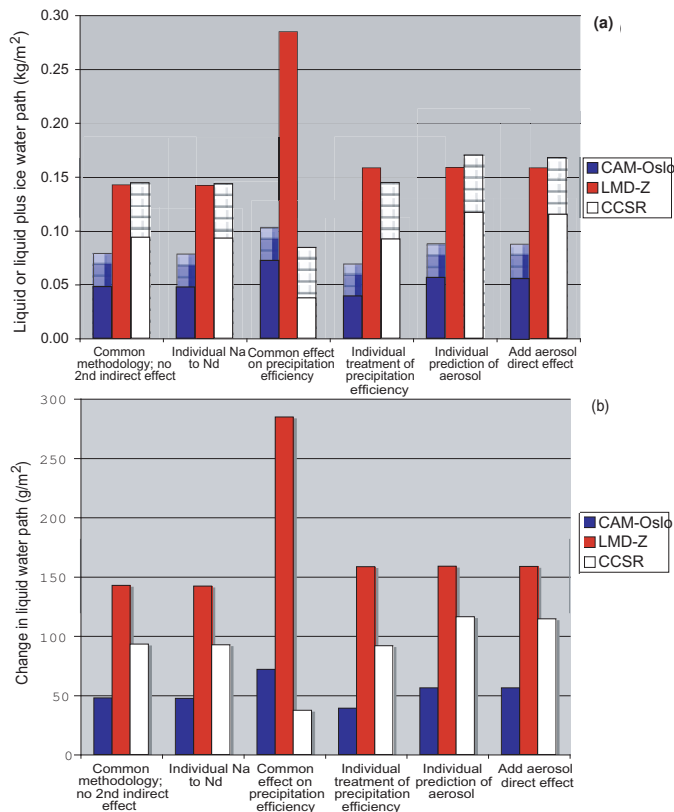
Full Screen / Esc

Printer-friendly Version

Interactive Discussion

## Indirect aerosol effects

J. E. Penner et al.



**Fig. 2.** (a) Global average present day liquid plus ice water path in the three models in each experiment. The solid portion of the bar graphs for the CAM-Oslo and CCSR models represents their liquid water path, while the horizontally hatched portion of the bar graph represents their ice water path. The LMD model results are only available for the liquid plus ice water path. (b) Global average change in liquid water path between present-day and preindustrial simulations in the three models in each experiment.

Title Page

Abstract

Introduction

Conclusions

References

Tables

Figures

◀

▶

◀

▶

Back

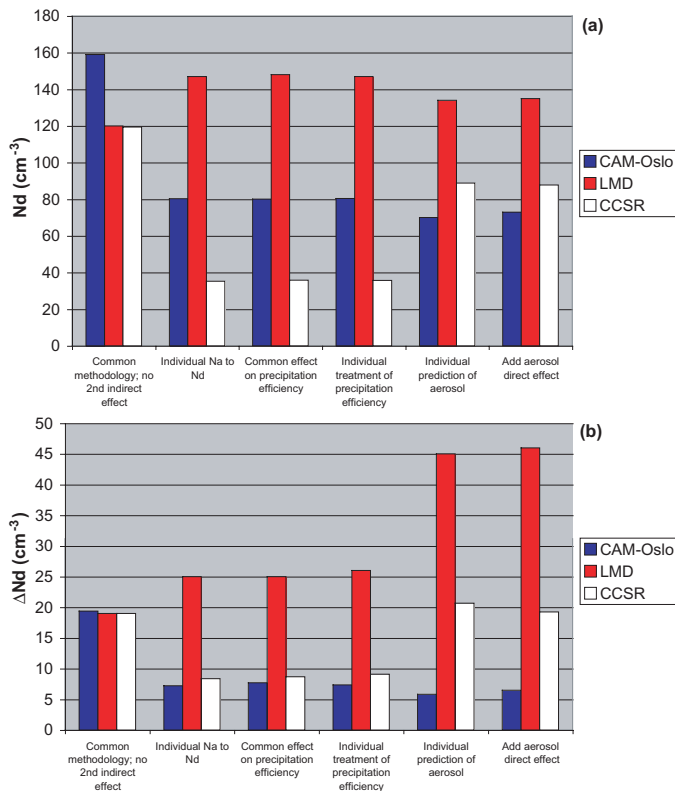
Close

Full Screen / Esc

Printer-friendly Version

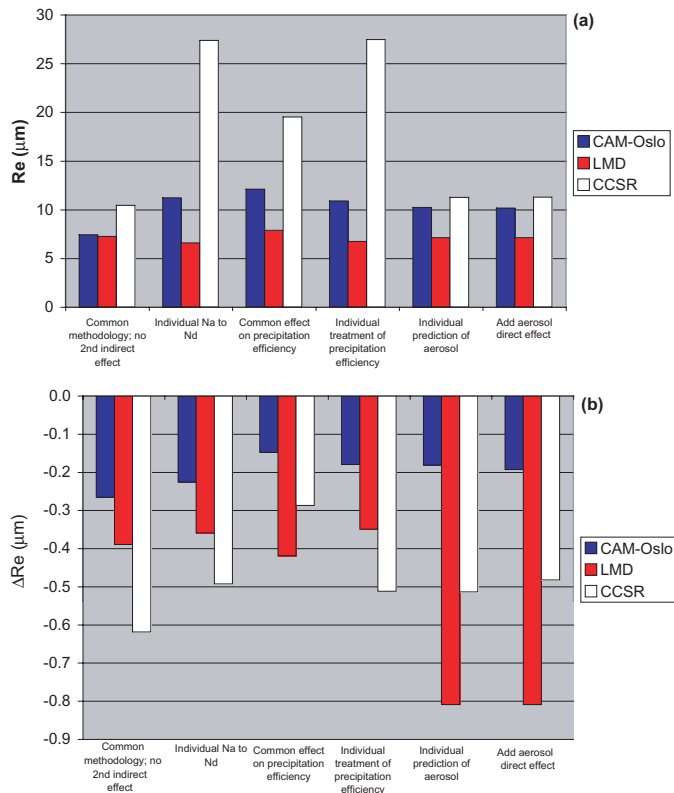
Interactive Discussion

EGU



**Fig. 3.** (a) Global average present day cloud droplet number concentration near 850 hPa and (b) global average change in cloud droplet number concentration near 850 hPa between the present-day and pre-industrial simulations for each model in each experiment. The actual level plotted is 867 hPa for CAM-Oslo, 848 hPa for LMD-Z, and 817 hPa for CCSR/NIES/FRCGC.

[Title Page](#)
[Abstract](#)
[Introduction](#)
[Conclusions](#)
[References](#)
[Tables](#)
[Figures](#)
[◀](#)
[▶](#)
[◀](#)
[▶](#)
[Back](#)
[Close](#)
[Full Screen / Esc](#)
[Printer-friendly Version](#)
[Interactive Discussion](#)

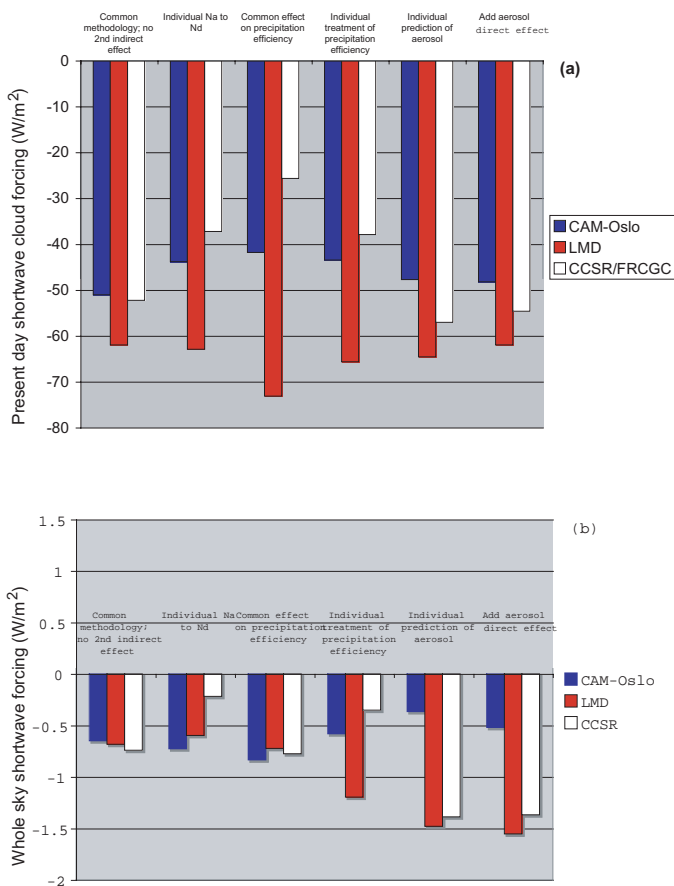


**Fig. 4.** (a) Global average present day cloud droplet effective radius near 850 hPa and (b) global average change in cloud droplet effective radius near 850 hPa between the present-day and pre-industrial simulations for each model in each experiment. The actual level plotted is 867 hPa for CAM-Oslo, 848 hPa for LMD-Z, and 817 hPa for CCSR.

[Title Page](#)
[Abstract](#)
[Introduction](#)
[Conclusions](#)
[References](#)
[Tables](#)
[Figures](#)
[◀](#)
[▶](#)
[◀](#)
[▶](#)
[Back](#)
[Close](#)
[Full Screen / Esc](#)
[Printer-friendly Version](#)
[Interactive Discussion](#)

## Indirect aerosol effects

J. E. Penner et al.



**Fig. 5.** (a) Global average present day short wave cloud forcing and (b) the global average change in whole sky net outgoing shortwave radiation between the present-day and pre-industrial simulations for each model in each experiment.

Title Page

Abstract

Introduction

Conclusions

References

Tables

Figures

◀

▶

◀

▶

Back

Close

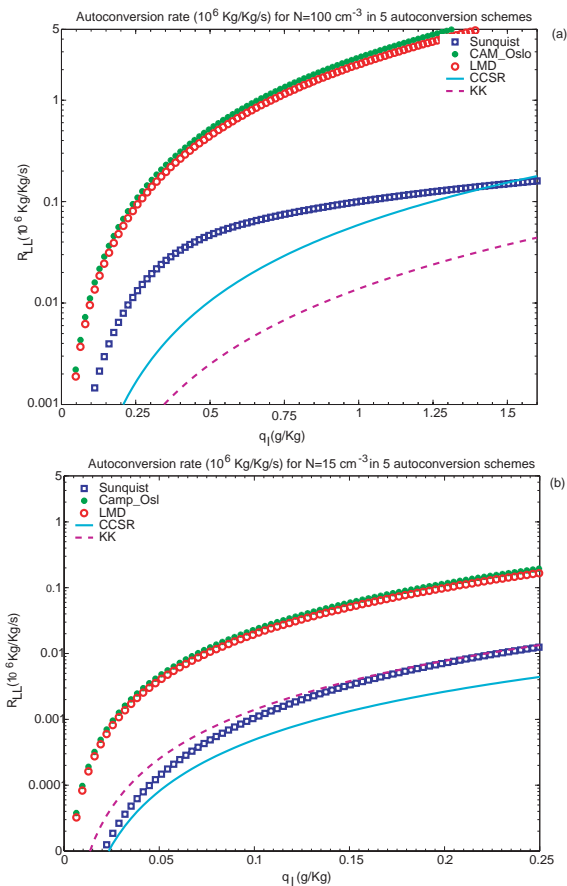
Full Screen / Esc

Printer-friendly Version

Interactive Discussion

## Indirect aerosol effects

J. E. Penner et al.



**Fig. 6.** Autoconversion rates (in  $10^6 \text{ kg/kg/s}$ ) as a function of liquid water mixing ratio ( $\text{g/kg}$ ) for different autoconversion schemes. The calculations assumed a droplet number concentration of **(a)**  $100 \text{ cm}^{-3}$  and **(b)**  $15 \text{ cm}^{-3}$ . Note change of horizontal scale.

Title Page

Abstract

Introduction

Conclusions

References

Tables

Figures

◀

▶

◀

▶

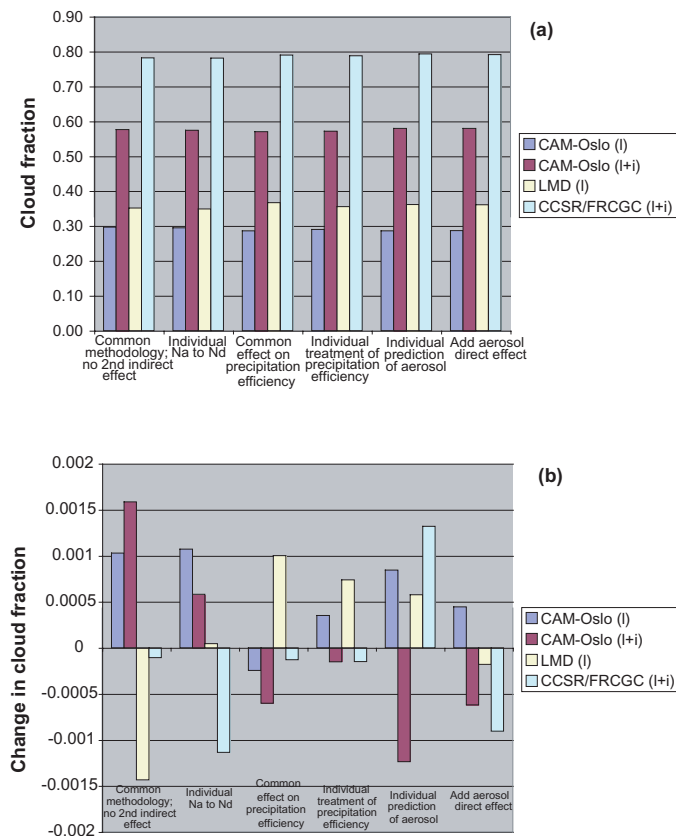
Back

Close

Full Screen / Esc

Printer-friendly Version

Interactive Discussion



**Fig. 7.** (a) Global average present-day liquid or liquid plus ice cloud fraction and (b) global average change in cloud fraction between the present-day and pre-industrial simulations for each model in each experiment.

[Title Page](#)
[Abstract](#)
[Introduction](#)
[Conclusions](#)
[References](#)
[Tables](#)
[Figures](#)
[◀](#)
[▶](#)
[◀](#)
[▶](#)
[Back](#)
[Close](#)
[Full Screen / Esc](#)
[Printer-friendly Version](#)
[Interactive Discussion](#)