



**HAL**  
open science

# Abundance of regular orbits and out-of-equilibrium phase transitions in the thermodynamic limit for long-range systems

Romain Bachelard, Cristel Chandre, Duccio Fanelli, Xavier Leoncini, Stefano Ruffo

► **To cite this version:**

Romain Bachelard, Cristel Chandre, Duccio Fanelli, Xavier Leoncini, Stefano Ruffo. Abundance of regular orbits and out-of-equilibrium phase transitions in the thermodynamic limit for long-range systems. 2008. hal-00322931v1

**HAL Id: hal-00322931**

**<https://hal.science/hal-00322931v1>**

Preprint submitted on 19 Sep 2008 (v1), last revised 12 Jan 2009 (v2)

**HAL** is a multi-disciplinary open access archive for the deposit and dissemination of scientific research documents, whether they are published or not. The documents may come from teaching and research institutions in France or abroad, or from public or private research centers.

L'archive ouverte pluridisciplinaire **HAL**, est destinée au dépôt et à la diffusion de documents scientifiques de niveau recherche, publiés ou non, émanant des établissements d'enseignement et de recherche français ou étrangers, des laboratoires publics ou privés.

# Abundance of regular orbits and out-of-equilibrium phase transitions in the thermodynamic limit for long-range systems

R. Bachelard<sup>1</sup>, C. Chandre<sup>1</sup>, D. Fanelli<sup>2</sup>, X. Leoncini<sup>1</sup>, S. Ruffo<sup>2</sup>

1. *Centre de Physique Théorique, CNRS - Aix-Marseille Université, Luminy, Case 907, F-13288 Marseille cedex 9, France*

2. *Dipartimento di Energetica "Sergio Stecco", Università di Firenze, via s. Marta 3, 50139 Firenze, Italia and Centro interdipartimentale per lo Studio delle Dinamiche Complesse (CSDC) and INFN*

We investigate the dynamics of many-body long-range interacting systems, taking the Hamiltonian Mean Field model as a case study. We show that an abundance of regular trajectories, associated with invariant tori of the single-particle dynamics, exists. The presence of such tori provides a dynamical interpretation of the emergence of long-lasting out-of-equilibrium regimes observed generically in long-range systems. This is alternative to a previous statistical mechanics approach to such phenomena which was based on a maximum entropy principle. Previously detected out-of-equilibrium phase transitions are also reinterpreted within this framework.

The vast majority of phenomena observed in nature results from complex interactions present in large assemblies of elementary constituents. A widespread observation is the emergence of regular trajectories despite the complexity of the underlying network of couplings. A successful approach to describe the collective behaviour of large assemblies of particles is traditionally provided by statistical mechanics. The theoretical foundation of equilibrium statistical mechanics relies upon the hypothesis of ergodicity, i.e. the agreement of time with ensemble averages. Arguing for an effective degree of global mixing of dynamical trajectories in phase space, caused by chaos, implies ergodicity and thus the validity of statistical mechanics [1]. Thermodynamic behaviour is obtained in the limit where the number of degrees of freedom goes to infinity, which offers innumerable pathways to chaos. Indeed, in this limit regular regions (invariant tori) do not possess enough dimensions to prevent trajectories from spreading, while the largest fraction of the phase space is occupied by chaotic motion, hence sustaining mixing [2].

However, the fact that any weak nonlinearity would imply ergodicity has been vigorously debated since the pioneering work of Fermi, Pasta and Ulam (FPU) [3] on the dynamics of oscillators interacting via *short-range couplings*. Contrary to expectations, the celebrated FPU chain exhibits a recurrent behavior on very long times, violating ergodicity. Nowadays, there is a growing evidence that, for generic initial conditions, the relaxation time to equilibrium remains finite in the thermodynamic limit [4]. This early numerical experiments marked the beginning of a new era in science [5] where computer simulations are massively employed to bridge the gap between the microscopic and macroscopic realms. Since then, integrating numerically the Hamiltonian equations of motion of many body systems is routinely employed [6] to quantitatively inspect the fascinating contexts where also *long-range forces* are in play [7, 8]. Systems with long-range interactions have been shown to display an extremely slow relaxation to equilibrium. More specifically, out-of-equilibrium metastable regimes have been identified, where the system gets trapped before eventu-

ally attaining its asymptotic state [9, 10]. The equilibration time increases with system size and formally diverges in the thermodynamic limit, leading to a breaking of ergodicity. Galaxies could represent the most spectacular example of such far-from-equilibrium processes [11], but analogous phenomena have also been reported in fundamental problems of plasma physics [12]. These metastable states have been termed Quasi-Stationary States (QSS) in the literature and often represent the solely accessible experimental regimes (e.g., in the Free Electron Laser [13]). A relevant feature of long-range systems is the self-consistent nature of the interaction of a particle with its "local field", which itself results from the combined action of all the other particles or of an "external field" like for wave-particle systems [12]. It is exactly this self-consistency which finally entails the widespread regularity of the motion. Besides that, one observes the presence of classes of initial states that show different time evolutions.

The development of a systematic theoretical treatment of the QSS, which would enable us to unravel the puzzle of their ubiquity, is still an open problem. Both the self-consistent nature of the interaction and the strong dependence on the initial condition suggest that QSS could be related to the presence of some type of regular motion. The traditional approach to clarifying the emergence of regular trajectories is based on the following result: If the Hamiltonian system under scrutiny is close to integrable, Kolmogorov-Arnold-Moser [14] theory proves that the phase space is filled with invariant tori on which the motion is quasi-periodic. In this framework, however, increasing the number of particles enhances the contribution of chaotic trajectories [2], in stringent contradiction with the observation that QSS prevail in the large  $N$  limit. Therefore the aforementioned scenario cannot be invoked to explain the presence of regular motion in systems with long range interactions.

A first purpose of this Letter is to put forward a different interpretative framework. We argue that tori can form in phase space also as a result of a self-consistent interaction in the thermodynamic limit. As we shall

demonstrate, while for a small number  $N$  of degrees of freedom the single particle motion of a paradigmatic system with long-range interaction is erratic, the trajectories become more and more regular as  $N \rightarrow \infty$ . These trajectories arise from a low-dimensional time dependent effective Hamiltonian.

For systems with long-range interactions, the dependence on the initial condition can materialize in the form of a true out-of-equilibrium phase transition: By varying some crucial parameters of the initial state, one observes a convergence towards asymptotic states (in the limit  $N \rightarrow \infty$ ) with different macroscopic properties (e.g., homogeneous/inhomogeneous) [15]. This phase transition has been interpreted by resorting to Lynden-Bell's theory of "violent relaxation" [16], which is briefly discussed in the following with reference to a specific model. As a second purpose of this Letter, we provide a microscopic, dynamical, interpretation of this transition in terms of a sharp modification of the properties of the single particle orbits, corresponding to a change of the effective Hamiltonian. Our ultimate aim is to suggest a unifying picture that potentially applies to systems where collective, organized, phenomena emerge from the globally coupled sea of individual components.

The Hamiltonian Mean Field (HMF) model [17] is widely referred to as the benchmark for long-range systems and analysed for pedagogical reasons. The model, which describes the evolution of  $N$  particles coupled through an equally strong, attractive, cosine interaction is specified by the following Hamiltonian:

$$H = \sum_{i=1}^N \left[ \frac{p_i^2}{2} + \frac{1}{2N} \sum_{j=1}^N (1 - \cos(\theta_i - \theta_j)) \right], \quad (1)$$

where  $\theta_i$  and  $p_i$  label respectively the position and momentum of particle  $i$  on the unit circle. Note that Hamiltonian (1) can also be seen as a simplified version of the gravitational [18] or plasma [19] sheets model when considering only the first harmonic in the Fourier expansion of the potential. To characterize the behaviour of the system, it is convenient to introduce the "magnetization"  $\mathbf{M} = \frac{1}{N} (\sum \cos \theta_i, \sum \sin \theta_i) = M(\cos \phi, \sin \phi)$ , which quantifies the degree of spatial bunching of the particles (homogeneity vs. inhomogeneity). We here consider water-bag initial conditions, consisting of particles uniformly distributed in a rectangle  $[-\theta_0, \theta_0] \times [-p_0, p_0]$  in the  $(\theta, p)$ -plane. These states bear a magnetization  $M_0 = \sin(\theta_0)/\theta_0$ , the associated energy being  $U = p_0^2/6 + (1 - M_0^2)/2$ . When performing numerical simulations, starting from the water-bag initial condition, the system gets usually frozen in a QSS of the type discussed above [9, 10].

The individual particle  $i$  obeys the following equations of motion  $\dot{p}_i = -M \sin(\theta_i - \phi)$  and  $\dot{\theta}_i = p_i$ , where  $M$  and  $\phi$  are functions of all the positions of the particles. Numerical observations suggest that, for large enough values of  $N$ , both the magnetization  $M$  and the phase  $\phi$  develop a specific oscillatory time dependence. Hence,

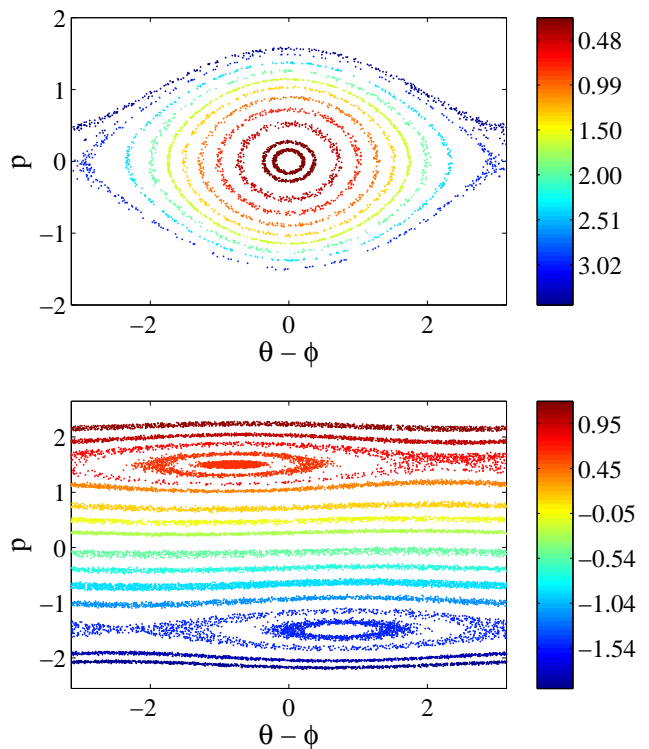


Figure 1: Poincaré sections of a few selected particles of the HMF Hamiltonian (1) for  $N = 2 \times 10^5$  in the QSS regime for two different water-bag initial conditions :  $(M_0, U) = (0.6, 0.54)$  (upper panel) and  $(M_0, U) = (0.6, 0.88)$  (lower panel). The former returns a single cluster, which gives a non-zero magnetization QSS ( $M_{QSS} \approx 0.5$ ), while the latter shows two symmetric clusters, which produce a QSS with a small residual magnetization. The color code corresponds to the values of the action variable associated with individual particles.

the single particle motion turns out to be governed by a time dependent one degree of freedom (often referred to as a one and a half degree of freedom) effective Hamiltonian. This justifies the investigation of the phase space properties of the QSS, using a technique inspired by that of Poincaré sections. In particular, we consider the time average  $\bar{M}$  (after a transient) and record the positions and momenta of a few selected particles  $(\theta_i, p_i)$  when  $M(t) = \bar{M}$  and  $dM/dt > 0$  (since  $M$  typically shows an oscillatory behavior). The resulting stroboscopic sections are displayed in Fig. 1. Two different phase space structures are found depending on the choice of initial pair  $(M_0, U)$ , one with monocluster and the other with a bicluster. The monocluster QSS displays a nonzero magnetization (inhomogeneous phase), while the bicluster QSS has a small residual magnetization (homogeneous phase).

The monocluster QSS can be ideally mapped into a collection of weakly interacting pendula. As revealed by our stroboscopic analysis, particles evolve on regular tracks, which are approximately one-dimensional, though they do manifest a degree of local diffusion (*thickness*). For the

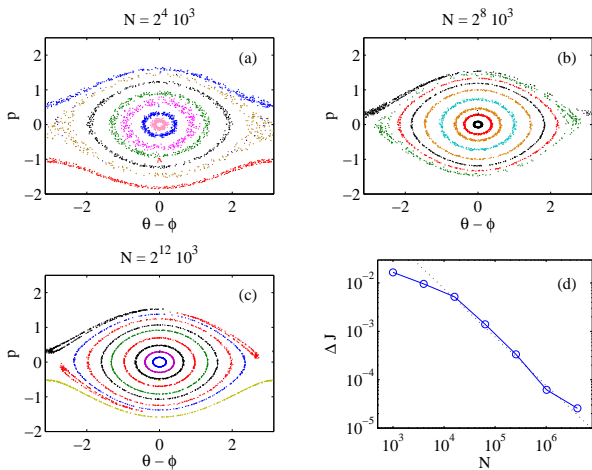


Figure 2: Poincaré sections of a few selected particles of the HMF Hamiltonian (1), when the system size is varied (for  $M_0 = 0.6$  and  $U = 0.54$ ). For large enough values of  $N$ , the magnetization  $M$  is found numerically to approximately scale as  $M(t) \approx M + \delta M(t) \cos \omega t$ , with  $|\delta M| \ll M$  and  $|\partial_t \delta M| \ll \omega |\delta M|$ . Ignoring the time dependence of  $\delta M$  and using a reduced model of test particles in the external field  $M(t)$ , one obtains stroboscopic sections which are qualitatively and quantitatively similar to the ones reported in this figure, with the unique difference that the thickness is zero [20]. Considering a torus with action  $J \approx 1.9$ , we plot in panel d) its variance  $\Delta J$  computed over a time interval  $\Delta t = 300$  as a function of  $N$ . The scaling  $1/N$  (dotted line) looks accurate over a wide range of  $N$ s.

bicluster QSS, the Poincaré section shows a phase portrait which closely resembles the one obtained for a particle evolving in the potential of two contra-propagating waves. These latter interact very weakly, as the associated propagation velocities appear rather different.

In order to get a quantitative estimate of the *thickness* of the tori as a function of the total number of particles, we focus on the monocluster QSS. Panels a), b) and c) in Fig. 2 display the single particle phase space for increasing values of  $N$ . A clear trend towards integrability is observed as quantified in panel d) where the *thickness* is plotted versus  $N$ .

Summing up, we have assessed that the single particle motion of a long-range interacting system, which is considered typical, becomes progressively more regular as the number of particles is increased. This is at variance with what typically happens for systems with short-range interactions and provides a different approach to the interpretation of the abundance of regular motion in long-range dynamics. Besides that, we have seen that the features of the single particle motion depend on the choice of the initial condition. A natural question then arises: what is the link between the macroscopic properties of the different QSS with the change observed in the single particle dynamics? Anticipating the answer, we will see that this is related to a bifurcation occurring in the effective Hamiltonian.

In the thermodynamic limit, the evolution of the single particle distribution function  $f(\theta, p, t)$  is governed by the Vlasov equation [21]. This equation also describes the mean-field limit of wave-particle interacting systems [12]. It can be reasonably hypothesized that QSS are stationary stable solutions of the Vlasov equation [10]. Following these lines, a maximum entropy principle, previously developed in the astrophysical context by Lynden-Bell [16], allowed one to predict [15], for the HMF model, the occurrence of an out-of-equilibrium phase transitions, separating distinct macroscopic regimes (magnetized/demagnetized) by varying selected control parameters which represent the initial condition.

We here interpret the transition in a purely dynamical framework, as a bifurcation from a monocluster QSS to a bicluster QSS. Aiming at shedding light on this issue, we proceed as follows: For fixed  $M_0$  and  $N$ , we gradually increase the energy  $U$  and compute the Poincaré sections, as discussed above. We then analyze the recorded sections by identifying the number of resonances and measuring the associated width and position (both calculated in the  $p$  direction). Results for  $M_0 = 0.6$  are displayed in the lower panel of Fig. 3: the shaded region, bounded by the dashed lines, quantifies the width of the resonances. As anticipated, one can recognize the typical signature of a bifurcation pattern. Repeating the above analysis for different values of the initial magnetization  $M_0$ , allows us to draw a bifurcation line in the parameter space  $(M_0, U)$ . In the upper panel of Fig. 3 we report both this bifurcation (full) and the Lynden-Bell phase transition (dashed) lines [15]. The two profiles resemble each other qualitatively, and even quantitatively for small  $M_0$ . The change of the bifurcation type from subcritical to supercritical signaled by the opening of a gap in the resonance plot could be associated with the change of the order of the phase transition from first to second. These results strongly corroborate our claim that the out-of-equilibrium phase transition from magnetized to non magnetized QSS corresponds to a bifurcation in the single particle dynamics.

The phenomena here discussed are also found (data not shown) in the context of Hamiltonian models deputed to describe the interaction between a beam of charged particles and a set of self-consistently evolving waves [23]. A large number of relevant applications, facing the long-range nature of the couplings among constituents, fall within this rather wide category, ranging from plasma models, traveling wave tubes, and free electron lasers [24]. More concretely, the same tendency towards integrability is found in these latter settings, a fact which holds promise to eventually result in novel insight, potentially relevant for the functioning of the devices.

In summary, investigating the dynamics of systems with long range interactions allowed us to come to an interesting and general conclusion: a universal trend to organization/integrability of the single particle dynamics is found as the system size (number of particles) is increased. Phase space structures are identified and in-

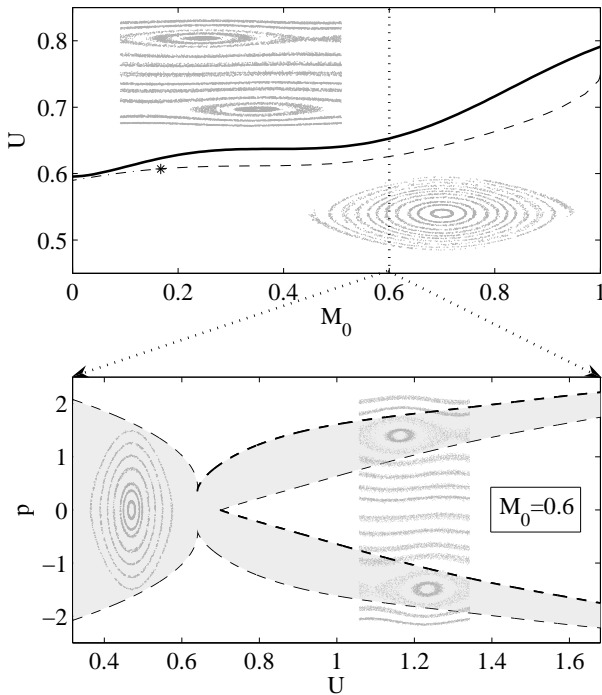


Figure 3: Upper panel: Phase diagram in the control parameter plane ( $M_0, U$ ) of the out-of-equilibrium phase transition of the HMF model from a magnetized to a demagnetized phase. The solid curve pinpoints the position of the bifurcation from the monocler to the bicluster QSS. The dashed line stands for the theoretical prediction based on the Lynden-Bell violent relaxation theory. The star refers to a tricritical point separating first from second order phase transitions. The central idea of the Lynden-Bell approach consists in coarse-graining the microscopic one-particle distribution function  $f(\theta, p, t)$  by introducing a local average in phase space. Starting from a water-bag initial profile, with a uniform distribution  $f_0$ , a fermionic-like entropy can be rigorously associated with the coarse grained profile  $\bar{f}$ , namely  $s[\bar{f}] = - \int dp d\theta \left[ \frac{\bar{f}}{f_0} \ln \frac{\bar{f}}{f_0} + \left(1 - \frac{\bar{f}}{f_0}\right) \ln \left(1 - \frac{\bar{f}}{f_0}\right) \right]$ . The corresponding statistical equilibrium, which applies to the relevant QSS regimes, is hence determined by maximizing such an entropy, while imposing the conservation of the Vlasov dynamical invariants, namely energy, momentum and norm of the distribution. The analysis [15, 22] reveals the existence of the out-of-equilibrium phase transition here depicted. Lower panel: The bifurcation is monitored as function of  $U$ , for  $M_0 = 0.6$ . The grey zones highlight the width of the resonances.

terpreted as invariant tori of a time dependent one degree of freedom Hamiltonian. Based on this analysis, the out-of-equilibrium statistical phase transitions is here understood from the viewpoint of microscopic dynamics, as a bifurcation occurring in the effective Hamiltonian which describes the single particle dynamics.

- 
- [1] G. Gallavotti, *Statistical Mechanics: A short treatise* (Springer, Berlin, 1999).  
 [2] C. Froeschlé and J.-P. Scheidecker, Phys. Rev. A **12**, 2137 (1975).  
 [3] E. Fermi, J. Pasta, S. Ulam, *Studies of non linear problems*, Document LA-

- 1940, 1955; [www.scholarpedia.org/article/Fermi-Pasta-Ulam-nonlinear-lattice-oscillations](http://www.scholarpedia.org/article/Fermi-Pasta-Ulam-nonlinear-lattice-oscillations).  
 [4] G. Gallavotti (Ed.), *The Fermi-Pasta-Ulam problem: a status report*, Lecture Notes in Physics **728** (Springer, Berlin, 2008).  
 [5] T. Dauxois, *Fermi, Pasta, Ulam, and a mysterious lady*,

- Physics Today **728**, 55 (2008)
- [6] D. Heggie and P. Hut, *The gravitational million-body problem* (Cambridge Univ. Press, Cambridge, 2003).
- [7] T. Dauxois *et al.* (Eds.) *Dynamics and thermodynamics of systems with long-range interactions*, Lecture Notes in Physics **602** (Springer, Berlin, 2002).
- [8] A. Campa *et al.* (Eds.) *Dynamics and thermodynamics of systems with long-range interactions: Theory and Experiments*, AIP Conf. Procs. **970** (2008).
- [9] V. Latora, A. Rapisarda, S. Ruffo, Phys. Rev. Lett. **80**, 692 (1998).
- [10] Y.Y. Yamaguchi *et al.* Physica A **337**, 36 (2004).
- [11] P.H. Chavanis, Int. J. Mod. Phys. **20**, 3113 (2006)
- [12] Y. Elskens and D.F. Escande, *Microscopic Dynamics of Plasmas and Chaos*, (IoP Publishing, Bristol, 2003).
- [13] J. Barré *et al.*, Phys. Rev E **69**, 045501(R) (2004).
- [14] A.N. Kolmogorov, Dokl. Akad. Nauk. SSSR **98**, 527 (1954); V.I. Arnold, Soviet Math. Dokl. **2** 501 (1961); J. Moser, Nachr. Akad. Wiss. Gottingen **K1**, 1 (1962).
- [15] A. Antoniazzi, D. Fanelli, S. Ruffo, Y. Yamaguchi, Phys. Rev. Lett. **99**, 040601 (2007).
- [16] D. Lynden-Bell, Mon. Not. R. Astron. Soc. **136**, 101 (1967).
- [17] M. Antoni and S. Ruffo, Phys. Rev. E **52**, 3261 (1995).
- [18] F. Hohl and M.R. Feix, Astrophys. J. **147**, 1164 (1967).
- [19] J.M. Dawson, Phys. Fluids **5**, 445 (1962).
- [20] R. Bachelard *et al.*, Eur. Phys. J. D **42**, 125 (2007).
- [21] M. Hauray and P.E. Jabin, Arch. Rat. Mech. Anal. **183**, 489 (2007); M.K.H. Kiessling, Commun. Nonlin. Sci. Num. Simul. **13**, 186 (2008); M.K.H. Kiessling, *Statistical equilibrium dynamics*, in Ref. [8].
- [22] P.H. Chavanis, Eur. Phys. J. B **53**, 487 (2006).
- [23] R. Bonifacio *et al.*, Riv. Nuovo Cimento **13**, 1 (1990).
- [24] S. Milton *et al.*, Science **292**, 2037 (2003); L.H. Yu *et al.*, Science **289**, 932 (2000).