



HAL
open science

Gravity wave propagation in the realistic atmosphere based on a three-dimensional transfer function model

Luyan Sun, W. Wan, F. Ding, T. Mao

► **To cite this version:**

Luyan Sun, W. Wan, F. Ding, T. Mao. Gravity wave propagation in the realistic atmosphere based on a three-dimensional transfer function model. *Annales Geophysicae*, 2007, 25 (9), pp.1979-1986. hal-00318379

HAL Id: hal-00318379

<https://hal.science/hal-00318379>

Submitted on 18 Jun 2008

HAL is a multi-disciplinary open access archive for the deposit and dissemination of scientific research documents, whether they are published or not. The documents may come from teaching and research institutions in France or abroad, or from public or private research centers.

L'archive ouverte pluridisciplinaire **HAL**, est destinée au dépôt et à la diffusion de documents scientifiques de niveau recherche, publiés ou non, émanant des établissements d'enseignement et de recherche français ou étrangers, des laboratoires publics ou privés.

Gravity wave propagation in the realistic atmosphere based on a three-dimensional transfer function model

L. Sun¹, W. Wan¹, F. Ding¹, and T. Mao²

¹Institute of Geology and Geophysics, Chinese Academy of Sciences, Beijing, 100029, P. R. China

²National Center for Space Weather, China Meteorological Administration, Beijing, 100081, P. R. China

Received: 24 September 2006 – Revised: 6 August 2007 – Accepted: 9 August 2007 – Published: 2 October 2007

Abstract. In order to study the filter effect of the background winds on the propagation of gravity waves, a three-dimensional transfer function model is developed on the basis of the complex dispersion relation of internal gravity waves in a stratified dissipative atmosphere with background winds. Our model has successfully represented the main results of the ray tracing method, e.g. the trend of the gravity waves to travel in the anti-windward direction. Furthermore, some interesting characteristics are manifest as follows: (1) The method provides the distribution characteristic of whole wave fields which propagate in the way of the distorted concentric circles at the same altitude under the control of the winds. (2) Through analyzing the frequency and wave number response curve of the transfer function, we find that the gravity waves in a wave band of about 15–30 min periods and of about 200–400 km horizontal wave lengths are most likely to propagate to the 300-km ionospheric height. Furthermore, there is an obvious frequency deviation for gravity waves propagating with winds in the frequency domain. The maximum power of the transfer function with background winds is smaller than that without background winds. (3) The atmospheric winds may act as a directional filter that will permit gravity wave packets propagating against the winds to reach the ionospheric height with minimum energy loss.

Keywords. Ionosphere (Ionospheric-atmosphere interactions; Ionospheric disturbances; Wave propagation)

1 Introduction

Many researchers have found that severe weather phenomena in the troposphere, such as cold wave (Shen and Zi, 1986; Šauli and Boška, 2001), thunderstorm (Pierce and Coroniti, 1966), typhoon (Shen, 1982; Huang et al., 1985; Xiao et al., 2006) and vortexes (Wan et al., 1998), can excite internal gravity waves which propagate to the ionospheric heights and

bring forth the observable traveling ionospheric disturbances (TIDs). Row (1967) brought forward the pulse propagation theory of gravity waves in an unbounded dissipationless, planar, nonrotating, gravitationally stratified isothermal neutral atmosphere. Row's theory exhibits the major features of the observation at ionospheric heights after the occurrence of a ground impulse source, such as nuclear explosion. Bertin et al. (1975) adopted the reverse ray-tracing method to study the excitation and propagation of gravity waves and proposed that the production mechanism for these waves may involve ageostrophic perturbations of the neutral wind in a jet stream bordering the polar front. Using the transfer function method without background winds, Mayr et al. (1984, 1990) simulated the excitation of gravity waves by a source at the polar thermosphere. Wan et al. (1998) statistically analyzed the wave parameters and the exciting sources of the TIDs in Central China based on the observation of an HF Doppler array. They found that the observed TIDs are excited by the tropospheric vortexes, which, in turn, are related to the topography of the Tibet plateau. Mendillo et al. (2002) suggested that the disturbances from the lower atmosphere may cause 10–30% variations in the F2-layer electron density. Rishbeth (2006) reviewed the F-region links with the lower atmosphere and emphasized the role of gravity waves. He pointed out that some of the well-known F2-layer anomalies might have their origins in the lower atmosphere, and it has been suggested that phenomena, such as storms, earthquakes and volcanic explosions, may produce F2-layer signatures. Moreover, Liu et al. (2006) investigated the ionospheric GPS total electron content (TEC) disturbances triggered by the 26 December 2004 Indian Ocean tsunami. They found that the TIDs, which were triggered by the tsunami waves, have periods of 10–20 min and horizontal wavelengths of 120–240 km in the ionosphere.

Conventionally, the researchers adopt three methods to study the propagation characteristics of gravity waves. The first method is the ray-tracing technique (Cowling et al., 1971; Hung et al., 1978; Wan et al., 1998; Yuan et al., 1997). It computes the propagation characteristics of wave energy,

Correspondence to: W. Wan
(wanw@mail.iggcas.ac.cn)

assuming the nondissipative atmosphere. This method is easy to use and its results have clear physical meanings. Furthermore, the method can also deal with the nonplane stratified atmosphere and the time-varying medium. But compared with the realistic atmosphere, the ray theory model is known for its excessive briefness so that it can only be applied to high frequency proximateness. Moreover, the method does not include the phase and cannot calculate the real wave field. Besides, the method cannot provide the distribution characteristics of disturbance in the time-space domain. Recently, an amended ray-tracing technique which can overcome the deficiency of this method, to some extent, is put forward by Ding et al. (2003) through considering the heat conductivity coefficient and viscosity coefficient in the complex dispersion relation of gravity waves.

The second method is the full wave solution method (Francis, 1973; Lindzen et al., 1976; Liang et al., 1998). This method is very complexity. The third one is the transfer function method. Mayr et al. (1984, 1990) investigated the characteristics of gravity waves induced by a source in the polar region. But they did not considered the background winds in their transfer function model, and they also did not study free waves excited by a source in the troposphere and did not investigate the characteristics of medium scale gravity waves induced by the local source, such as the weather process, an earthquake and nuclear detonation.

In this paper, we develop a numerical transfer function model based on the linear theory of gravity waves by considering background winds, to study the excitation and propagation of free gravity waves generated in the troposphere and the response of the ionosphere in a realistic atmosphere. The source on the Earth's surface is regarded as an input signal and the TIDs induced by the exciting source are regarded as an output signal. We consider the atmosphere between the Earth's surface and the ionosphere as a whole response system. We go into detail about the principle of the transfer function model in Sect. 2, and the results are presented in Sect. 3. Finally, a summary is made in Sect. 4.

2 The transfer function model

2.1 The dispersion relation of internal gravity waves

In our study the movement of the atmosphere satisfies the Navier-Stokes equations (Francis, 1973; Ding et al., 2003):

$$\begin{cases} \frac{D\rho}{Dt} + \rho \nabla \cdot \mathbf{v} = 0, \\ \rho \frac{D\mathbf{v}}{Dt} = \rho \mathbf{g} - \nabla p + \nabla \cdot \bar{\bar{\mathbf{S}}}, \\ \frac{\rho R_0}{(\gamma-1)} \frac{DT}{Dt} = Q + \nabla \cdot (\lambda \nabla T) - p \nabla \cdot \mathbf{v} + \bar{\bar{\mathbf{S}}} : \nabla \mathbf{v}. \end{cases} \quad (1)$$

where ρ , p , \mathbf{v} , T are density, pressure, particle velocity and temperature for the atmosphere. Q is the quantity of heat. $\lambda=6.71 \times 10^{-7} T_0^{0.71}$, $\mu=3.34 \times 10^{-7} T_0^{0.71}$ (DalGarno

and Smith, 1962), γ and R_0 are thermal conductivity coefficient, viscosity coefficient, specific heat ratio and universal gas constant, respectively. $\bar{\bar{\mathbf{S}}}$ is the gas viscosity tensor. \mathbf{g} is the gravitational acceleration. The variables in Eq. (1) are composed of two parts: the ambient quantities and the first-rank perturbations, while higher rank perturbations are ignored. Hence, the variables can be expressed as

$$\mathbf{v} = \mathbf{v}_0 + \mathbf{v}_1, \quad p = p_0 + p_1, \quad T = T_0 + T_1, \quad (2)$$

where \mathbf{v}_0 is neglected by Francis (1973). Under these hypotheses, Eq. (1) is subsequently linearized and we apply the Fourier transfer both in time and space. Then we obtain

$$\begin{bmatrix} 1 & \kappa - i\alpha & -1 & 1 \\ 1 & \kappa & 0 & -\frac{1}{\gamma-1} + \nu R \\ 3\eta R + \eta - \beta & \eta\kappa - 3i\eta\alpha & 1 & 0 \\ 2i\eta\alpha + \eta\kappa & 4\eta R - \beta - \eta & \kappa & -i\alpha \end{bmatrix} \cdot \begin{bmatrix} \frac{k_h v_1}{\omega'} \\ \frac{\omega' p_1}{k_h v_1} \\ \frac{p_1}{T_0} \\ \frac{T_1}{T_0} \end{bmatrix} = 0, \quad (3)$$

where

$$\begin{cases} \kappa = (k_z + i/2H)/k_h, & \beta = \omega'^2/gk_h^2 H, \\ R = \kappa^2 - i\alpha\kappa + 1, & \eta = i\omega'\mu/3p_0, \\ \alpha = 1/k_h H, & \nu = i\lambda T_0 k_h^2/\omega' p_0, \\ \omega' = \omega - k_h v_0. \end{cases} \quad (4)$$

where $H=R_0T/g$ is the neutral scale height. The matrix Eq. (3) differs from that derived by Francis (1973) in that background zero rank wind \mathbf{v}_0 is included here. k_h is the real horizontal wave number: $k_h^2=k_x^2+k_y^2$. k_x and k_y are the horizontal wave numbers in the x and y directions, respectively. It has a nontrivial solution, so long as the determinant of the coefficient matrix in Eq. (3) is zero. Then we can obtain the complex dispersion relation:

$$C_3 R^3 + C_2 R^2 + C_1 R + C_0 = 0, \quad (5)$$

where

$$\begin{cases} C_3 = -3\eta\nu(1+4\eta), \\ C_2 = 3\eta(1+4\eta)/(\gamma-1) + \nu\beta(1+7\eta) + 3\eta, \\ C_1 = -[\beta^2 - 2\eta\alpha^2(1+3\eta)]\nu - \beta(1+7\eta)/(\gamma-1) - \beta, \\ C_0 = [\beta^2 - 2\eta\alpha^2(1+3\eta)]/(\gamma-1) + \alpha^2(1+3\eta). \end{cases} \quad (6)$$

For a given real frequency ω and horizontal wave number k_h , Eq. (5) has three pairs of roots for k_z : one pair for gravity waves, the other two for dissipative waves. Each pair of k_z corresponds to the upgoing and downgoing waves. In our calculation, only the root for gravity waves is considered.

2.2 Numerical transfer function model

According to the Eq. (5), the complex dispersion relation of internal gravity waves can be expressed as $k_z=k_z(\omega', k_h, z)$ in the moving coordinate system. However, the dispersion relation can also be described as $k_z=k_z(\omega, k_x, k_y, z)$ in the

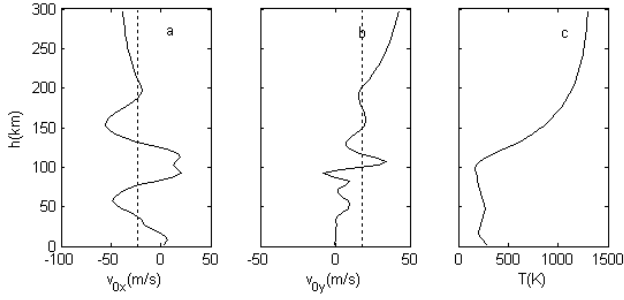


Fig. 1. The altitude profile of atmospheric wind speed (a), (b) and temperature (c), respectively, obtained from the HWM93 wind model and NRLMSISE-00 atmospheric model at the 06:00 UT on 22 June 2000 at Wuhan (30° N, 114° E). The eastward wind and the northward wind are denoted by v_{0x} and v_{0y} respectively. The dotted lines in panels a, b show the average wind which blows from the southeast to the northwest.

static coordinate system. They are contacted by the background winds $\omega' = \omega - k_h v_0$. So we can obtain the three-dimensional dispersion relation and the three-dimensional transfer function through calculating the two-dimensional dispersion relation and the two-dimensional transfer function. The Fourier integral of arbitrary physical quantity $V(x, y, z, t)$ in the static coordinate system, such as temperature, wind speed, is

$$V(x, y, z, t) = \int_{-\infty}^{+\infty} \int_{-\infty}^{+\infty} \int_{-\infty}^{+\infty} \int_{-\infty}^{+\infty} V(k_x, k_y, k_z, \omega) e^{i(\omega t - k_x x - k_y y - k_z z)} dk_x dk_y dk_z d\omega. \quad (7)$$

Then we integrate k_z in Eq. (7):

$$\begin{aligned} V(x, y, z, t) &= \int_{-\infty}^{+\infty} \int_{-\infty}^{+\infty} \int_{-\infty}^{+\infty} \int_{-\infty}^{+\infty} V(k_x, k_y, k_z, \omega) e^{i(\omega t - k_x x - k_y y - k_z z)} \\ &\quad \delta[k_z - k_z(\omega, k_x, k_y, z)] d\omega dk_x dk_y dk_z \\ &= \int_{-\infty}^{+\infty} \int_{-\infty}^{+\infty} \int_{-\infty}^{+\infty} V(k_x, k_y, \omega) e^{i(\omega t - k_x x - k_y y)} \\ &\quad e^{-ik_z(\omega, k_x, k_y, z)z} d\omega dk_x dk_y. \end{aligned} \quad (8)$$

The excitation source is at the Earth's surface and the response is at 300-km altitude. The atmosphere is vertically divided into 60 layers with the interval of 5 km. The background temperature and pressure in each layer are set to be constant. Through applying the Fourier transform to temporal and spatial variation of $V(x, y, z, t)$ at the i th layer, according to Eq. (8), we obtain

$$V(k_x, k_y, z_i, \omega) = V(k_x, k_y, \omega) e^{-ik_{z_i}(\omega, k_x, k_y, z_i)z_i}, \quad (9)$$

$$V(k_x, k_y, z_{i+1}, \omega) = V(k_x, k_y, \omega) e^{-ik_{z_i}(\omega, k_x, k_y, z_{i+1})z_{i+1}}. \quad (10)$$

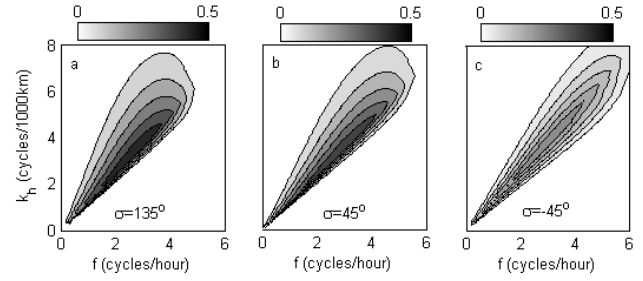


Fig. 2. Contours of transfer function amplitude for gravity waves propagating at 300-km altitudes in the frequency-wave-number domain. Panels (a), (b) and (c), respectively, describe the amplitude distribution of transfer function at the azimuth of $\sigma = 135^\circ$ (against wind), $\sigma = 45^\circ$ (the perpendicular direction of background winds) and $\sigma = -45^\circ$ (along wind). σ is the azimuth angle clockwise from the y direction.

When Eq. (10) is divided by Eq. (9), we obtain the transfer function at the i th layer

$$H_i(\omega, k_x, k_y, z_{i+1}, z_i) = e^{-ik_{z_i}(\omega, k_x, k_y, z_i) \cdot (z_{i+1} - z_i)}. \quad (11)$$

So, from the Earth's surface to 300-km altitude the expression formula of the transfer function is

$$H(\omega, k_x, k_y, z_1, z) = e^{-i \int_{z_1}^z k_z(\omega, k_x, k_y, z) dz}. \quad (12)$$

In our paper, $S(t, x, y, z_1)$ is the exciting source in the troposphere. Through using standard three-dimensional Fourier transform techniques, we obtain the expression formula of the exciting source in the frequency domain.

$$S(\omega, k_x, k_y, z_1) = F[S(t, x, y, z_1)]. \quad (13)$$

According to the relationship between the input signal and the output signal, we can get the response at any layer up to 300-km altitude in the frequency domain,

$$R(\omega, k_x, k_y, z) = S(\omega, k_x, k_y, z_1) \cdot H(\omega, k_x, k_y, z_1, z). \quad (14)$$

Then we apply the inverse Fourier transform to Eq. (14). This method yields the temporal and spatial distribution of $V(x, y, z, t)$ at any layer from the Earth's surface to 300-km altitude.

3 The results and discussions

3.1 The background parameters

Figure 1 displays the vertical profiles of the atmospheric winds and the temperature adopted in our model. The background wind profiles are calculated by HWM93 wind model (Hedin et al., 1991) and the temperature profile is obtained from the NRLMSISE-00 atmospheric model (Picone et al., 2002) at 06:00 UT on 22 June 2000 at Wuhan

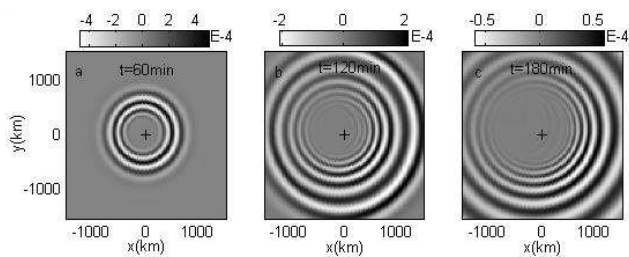


Fig. 3. The two-dimensional spatial distribution of amplitude for gravity waves at 300-km altitudes, which was triggered by the unit impulse source at $t=0$ min. The panels present the distribution of wave fields at time (a) $t=60$ min, (b) 120 min and (b) 180 min. The plus denotes the position of the unit impulse. The x-axis and y axis describe the eastward and the northward, respectively. The amplitude is the relative amplitude compared with that in the lowest layer.

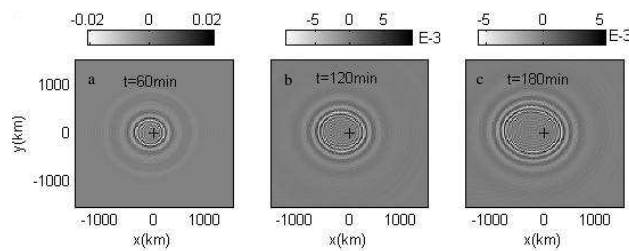


Fig. 4. The distribution of wave fields at 80-km altitude in the x-y plane.

(30° N, 114° E). The positive values in the wind profiles denote that winds are eastward (v_{0x}) and northward (v_{0y}), respectively. The dotted lines in Figs. 1a and b show the average wind profiles. As illustrated in Fig. 1, the background wind blows from southeast to northwest above 100 km altitude. The temperature is low and has slightly changes under 100 km altitude, but it rapidly increases above 100 km and exceeds 1000 K at 200 km altitude. The change of the atmospheric temperature with altitudes leads to the variation of the thermal conductivity coefficient and the viscosity coefficient (DalGarno and Smith, 1962), which will affect the dissipation of gravity waves. Furthermore, the tidal signature also plays an important role in the vertical propagation of gravity wave, which will be included in the next work.

3.2 The transfer function amplitude in the frequency-wave-number domain

According to the background parameters mentioned above, we calculate the contours of the transfer function amplitude along (a) $\sigma=135^\circ$, (b) $\sigma=45^\circ$ and $\sigma=-45^\circ$ (c) at 300-km altitude in Fig. 2, respectively. σ is the azimuth angle clockwise from y the direction. In each plot, the shadow region with the maximum of the transfer function amplitude shows that the gravity waves with the corresponding frequency and wave

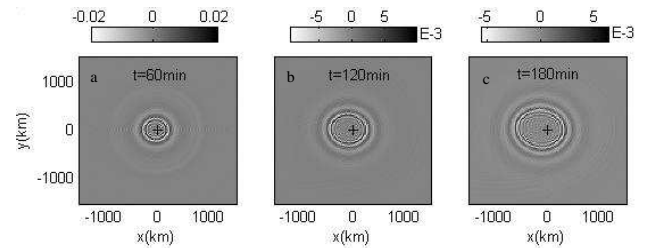


Fig. 5. The distribution of wave fields at 50-km altitude in the x-y plane.

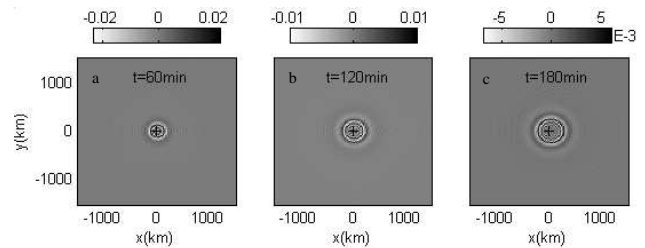


Fig. 6. The distribution of wave fields at 20-km altitude in the x-y plane.

number are most likely to reach the 300-km altitude with less energy attenuation. The amplitude of the transfer function is close to zero in the long-wave-number low-frequency region and in the short-wave-number high-frequency region. This indicates that the gravity waves cannot propagate from the Earth's surface to the 300-km altitude when the horizontal wave length is very long or short, especially when the wave frequency is relatively high or low. The shape of the shadow regions are different for gravity waves propagating along $\sigma=135^\circ$, $\sigma=-45^\circ$ and $\sigma=45^\circ$. Through comparing the grey level of the shadow regions with the maximum amplitude in each plot, we find that the amplitude of $\sigma=135^\circ$ is the strongest and $\sigma=-45^\circ$ is the weakest (the value is 1.0 at $z=0$). All of the regions with the maximum amplitude basically correspond to wave periods of about 15–30 min and horizontal wave lengths of about 200–400 km. In other words, for the internal gravity waves, the atmosphere behaves like a band-pass filter which offers the easy passage to gravity waves with periods of about 15–30 min and the horizontal wavelengths of about 200–400 km. Furthermore, the gravity waves propagating along $\sigma=135^\circ$ are the easiest to reach ionosphere heights, however, $\sigma=-45^\circ$ is the most difficult.

3.3 The impulse response of the transfer function in the spatial-temporal domain

When severe weather phenomena occur, gravity waves may be triggered in the troposphere and propagate upward in the middle and upper atmosphere. Gravity waves can even reach the ionosphere (Pierce and Coroniti, 1966; Šauli and Boška,

2001). Considering a unit impulse as the excitation origin of the gravity waves, we calculate the impulse response of the atmosphere and present the two-dimensional amplitude distribution at 300-km altitude in Fig. 3. The plus denotes the horizontal position of origin. The positive values in the x axis and y axis are eastward and northward, respectively. The wave amplitude is the relative amplitude which refers to the value of the amplitude at 300-km altitude divided by the maximum amplitude at the lowest layer. In Fig. 1 we have described that the average background winds blow from southeast to northwest at 300-km altitude. Compared with the propagation of gravity waves, the southeast direction of the source is the direction against winds and the northwest is along winds. The northeast and the southwest are approximately perpendicular to the background the winds.

Gravity wave disturbance can propagate away from the source toward the periphery (Fig. 3). Mayr et al. (1990) had suggested that the propagation shape of the gravity waves looks like a cone in the spatial domain and propagates as concentric circles at the same altitude under the propagating condition without the background winds. However, taking into account the background winds, we find that the distorted concentric circles develop with amplitude maxima near the source in the two-dimensional environment. This can be due to the effect of background winds which change the horizontal propagation distance of the gravity waves in different directions. The space interval between the adjacent wave crests, the horizontal propagation distance and the distribution of the wave field are different for waves propagating along different directions. For the waves propagating along winds, the horizontal propagation distance of waves are horizontally prolonged, which consequently causes the increase in wave attenuation accumulated on the propagating paths. However, for the waves propagating against winds the propagation distance is shortened, so as to decrease the energy loss. Therefore, the attenuated energy against the winds is smaller than that along winds. Those propagation characteristics of gravity waves can also be found in the low and middle atmosphere, such as at 80-km (Fig. 4), 50 km (Fig. 5) and 20-km altitude (Fig. 6). Unfortunately, we have no observational data to compare with the model output.

The time series of wave field are shown in Fig. 7 at 300-km altitude. The horizontal observation point is fixed at (a) $x=500$ km and $y=-500$ km, at (b) $x=-500$ km and $y=500$ km and at (c) $x=500$ km and $y=500$ km, respectively. At the same altitude the amplitude of gravity waves increases rapidly and then decreases gradually with time. The time interval between the adjacent wave crests gradually increases and changes from 15 min to 30 min, which means the wave train includes harmonic waves with a period of 15–30 min. The decrease in wave amplitudes is caused by the increase in viscosity and thermal conduction of the atmosphere, as well as background winds. The attenuation of the wave amplitude against the winds (Fig. 7a) spends a much longer time than the other observation points (Figs. 7b and c) and the

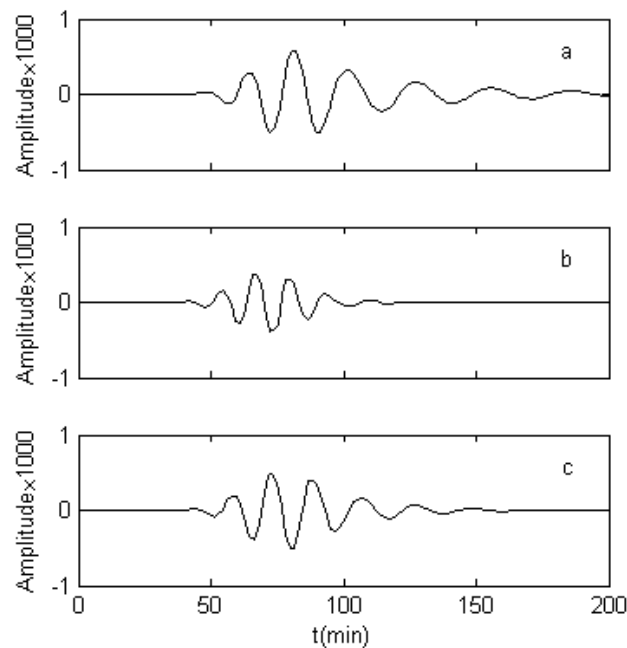


Fig. 7. Time series of gravity wave amplitudes at 300-km altitudes. The observation point is horizontally fixed at (a) $x=500$ km and $y=-500$ km, at (b) $x=-500$ km and $y=500$ km and at (c) $x=500$ km and $y=500$ km. The relative amplitude is enlarged 1000 times.

amplitude is greater than the others. The results show that the wave fields against the winds can propagate much higher than those along the winds.

Some propagation characteristics of gravity waves mentioned above are similar to those results obtained by the ray-tracing method (Cowling et al., 1971; Yeh, 1972; Ding et al., 2003). But, as compared with ray-tracing method which can only be used to study the monochromatic wave, the transfer function method is able not only to investigate the propagation of the wave packets but also to provide the distribution characteristic of the whole wave fields.

3.4 The filter characteristics of the transfer function

As stated above, the transfer function method can obtain the distribution of the whole wave fields in the spatial-temporal domain. In this part we will discuss the response curve of the transfer function in the frequency domain (Fig. 8), wave number domain (Fig. 9) and direction domain (Fig. 10), respectively.

The response curve of the transfer function in the frequency domain is shown in Fig. 8 at 300-km altitude. The solid line and the dotted line, respectively, denote the atmosphere with background winds and without background winds. As illustrated in the figure, the maximum power of the transfer function with background winds (including the filter effect of the background winds in different directions)

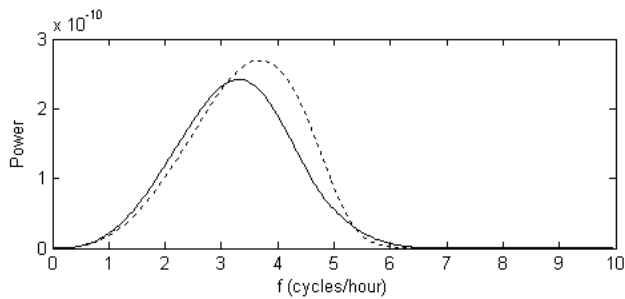


Fig. 8. The filter characteristics of the atmosphere in the frequency domain at 300-km altitudes. The solid line and the dotted line, respectively, denote the power distribution of the atmosphere with background winds and without background winds in the frequency domain.

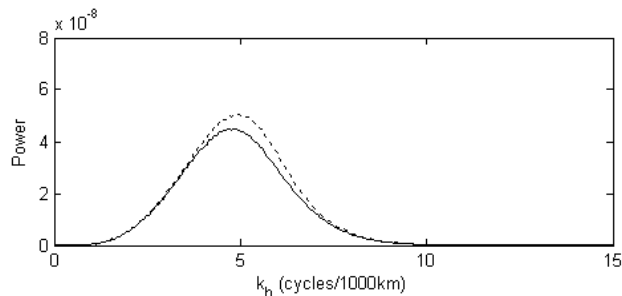


Fig. 9. The filter characteristics of the atmosphere in the wave number domain at 300-km altitude. The solid line and the dotted line, respectively, denote the power distribution of the atmosphere with background winds and without background winds in the wave number domain.

is smaller than that without background winds. This implies that the background winds filter some frequency components of waves propagating upward. The domain with the maximum power mainly focuses on the frequency domain of about 2–5 cycles/hour. It describes the characteristic of the band-pass filter for the gravity waves propagating from the Earth's surface to 300-km ionospheric altitude. Furthermore, the center frequency corresponding to the maximum power has obvious deviation under the control of the background winds. Figure 9 describes the filter characteristics of the transfer function in the wave number domain at 300-km altitude. The maximum power domain corresponds to the horizontal wave number of about 2.5–6 cycles/1000 km. It also indicates that the other components of gravity waves have been filtered by the viscosity and thermal conduction of the atmosphere, as well as the background winds when the gravity waves propagate upward to higher altitudes. Figure 10 depicts the filter characteristics of the transfer function in the direction domain at 300-km altitudes. The thick solid line and the thick dotted line, respectively, denote the distribution of the power in the atmosphere with background winds and

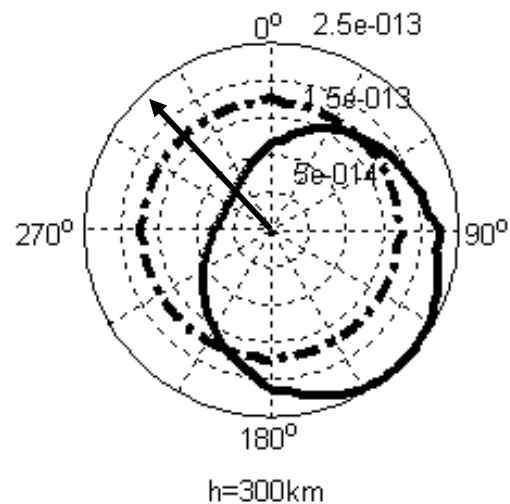


Fig. 10. The filter characteristics of the atmosphere in the direction domain at 300-km altitude. The thick solid line and the thick dashed line, respectively, denote the power distribution of the atmosphere with background winds and without background winds in the direction domain. The arrowhead shows the direction of the background winds. The radius shows the power value.

without background winds. The arrowhead shows the direction of the average background winds. The wave power is symmetrically distributed in all the directions without background winds. However, the dominating power concentrates on the southeast direction with background winds. Comparing with Fig. 3, we find that the gravity wave power mostly converges on the anti-windward direction. The main reason is that the upward propagating gravity waves will be affected by the background winds.

The filtering effects of the transfer function is also notable in Fig. 11 at $x=500$ km and $y=-500$ km (solid line), $x=-500$ km and $y=500$ km (dashed line) and $x=500$ km and $y=500$ km (dotted line) at 300-km altitude, respectively. For the fixed observation points, the center frequency along winds or against the winds is different from that perpendicular to the winds; moreover, the maximum power against the winds is stronger than that along the winds. Figure 12 shows the power distribution of the transfer function at the time of 60 min, 120 min and 180 min at 300 km altitudes (gravity wave excited on the surface when $T=0$ min). The power concentrates on the concentric circles at different times. The maximum power corresponds to the wave number of about 5 cycles/1000 km at 60 min. Then the wave number corresponding to the maximum power gradually decreases with time, which indicates that the wave length of gravity waves becomes longer. Before 120 min the maximum power is stronger than that after 120 min. The computed results also show the filter effect of the transfer function.

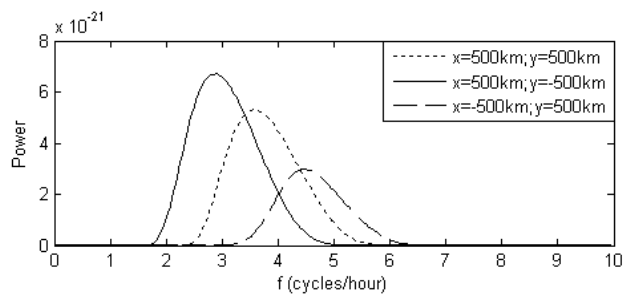


Fig. 11. At 300-km altitude the power-frequency characteristics of the fixed observation point at $x=500$ km and $y=-500$ km (solid line), $x=500$ km and $y=500$ km (dotted line) and $x=-500$ km and $y=500$ km (dashed line).

Through analyzing the response curve of the transfer function from Fig. 8 to Fig. 12, we can conclude that the gravity waves travel easily in the anti-windward direction. This is because the propagation distance of gravity wave packets along the winds is longer than that against the winds, which leads to more energy loss when gravity waves are propagating along the winds than against the winds at the same altitude. The results show that the atmospheric winds may act as a directional filter that will permit gravity wave packets propagating against the winds to reach the ionospheric height with minimum energy loss and minimum travel time. Therefore, with directional filtering by the winds, the action of the atmospheric processes seems to favor those gravity wave packets that take the minimum time to reach the ionosphere.

4 Conclusions

Under the linear propagation theory of gravity waves, the transfer function model is built to study the vertical propagation of gravity waves. Our numerical results not only confirm the main conclusions obtained by ray-tracing method, e.g. the trend of gravity waves to travel in the anti-windward direction, but also yield some new propagation characteristics of gravity waves:

(1) The method provides the distribution characteristic of the whole wave fields and the time series of the propagation of gravity waves. The impulse response of the transfer function in the spatial-temporal domain exhibits the propagation of the gravity wave packets in the way of the distorted concentric circles which is controlled by the background winds.

(2) The frequency and wave number response curve of the transfer function show the filter characters, where we can pick out the range of frequency and the wave number of the gravity waves (about 15–30 min periods and about 200–400 km horizontal wave lengths) which will reach ionospheric heights. The other frequency components of the waves have been filtered by the viscosity and thermal con-

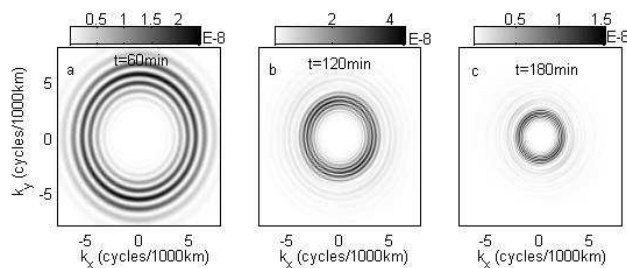


Fig. 12. The power distribution of the atmosphere in the wave number domain at 300-km altitude at (a) 60 min, (b) 120 min and (c) 180 min.

duction of the atmosphere, as well as the background winds. Moreover, the center frequency of the transfer function has an obvious shift with the winds and the maximum power with the background winds is smaller than that without background winds at the same altitude.

(3) The direction response curve of the transfer function indicates that the atmospheric winds may act as a directional filter that will permit gravity wave packets propagating against the wind to reach the ionospheric heights with minimum energy loss and minimum travel time. Therefore, with directional filtering by the winds, the action of the atmospheric processes seems to favor those gravity wave packets that take the minimum time to reach the ionosphere. The maximum power of the fixed observation point in the anti-windward direction is stronger than that in the windward direction. In the development of the paper we consider the simulation of a real origin of the gravity waves, e.g. typhoon or cold wave, and its propagation process in the ionosphere. Through the comparison between the observational and modeled results, we hope to make a further study on the coupling mechanism between the lower atmosphere and ionosphere. Furthermore, the nonlinear interaction between the gravity wave and the atmosphere plays an important role in the gravity waves propagation (Fritts and Alexander, 2003), which will also be discussed in the next work.

Acknowledgements. This work was supported by the Innovative Project of the Chinese Academy Sciences (kzcx3-sw-144), the National Important basic Research Project (2006CB806306) and National Nature Science Foundation of China (40304011).

Topical Editor M. Pinnock thanks two anonymous referees for their help in evaluating this paper.

References

- Bertin, F., Testud, J., and Kersley, L.: Medium scale gravity waves in the ionospheric F-region and their possible origin in weather disturbances, *Planet. Space Sci.*, 23, 493–507, 1975.
- Cowling, D. H., Webb, H. D., and Yeh, K. C.: Group rays of internal gravity waves in a wind-stratified atmosphere, *J. Geophys. Res.*, 76, 213–220, 1971.

- DalGarno, A. and Smith, F. J.: The thermal conductivity and viscosity of atomic oxygen, *Planet. Space Sci.*, 9, 1–6, 1962.
- Ding, F., Wan, W. X., and Yuan, H.: The influence of background winds and attenuation on the propagation of atmospheric gravity waves, *J. Atmos. and Solar-Terr. Phys.*, 65, 857–869, 2003.
- Francis, H. S.: Acoustic-Gravity models and large-scale traveling ionosphere disturbances of a realistic, dissipative atmosphere, *J. Geophys. Res.*, 78, 2278–2301, 1973.
- Fritts, D. C. and Alexander, M. J.: Gravity wave dynamics and effects in the middle atmosphere, *Rev. Geophys.*, 41(1), doi:10.1029/2001RG000106, 2003.
- Hedin, A. E., Spencer, N. W., and Biondi, M. A., et al: Revised global model of thermosphere winds using satellite and ground-based observations, *J. Geophys. Res.*, 96(A5), 7657–7688, 1991.
- Hung, R. J. and Phan, T.: Observation of gravity waves during the extreme tornado outbreak of 3 April 1974, *J. Atmos. Terr. Phys.*, 40, 831–843, 1978.
- Huang, Y. N., Cheng, K., and Chen, S. W.: On the detection of acoustic-gravity waves generated by typhoon by use of real time HF Doppler frequency shift sounding system, *Radio Sci.*, 20, 897–906, 1985.
- Lindzen, R. S. and Tung, K. K.: Banded convective activity and ducted gravity waves, *Mon. Wea. Rev.*, 104, 1602–1617, 1976.
- Liang, J., Wan, W., and Yuan, H.: Ducting of acoustic-gravity waves in a nonisothermal atmosphere around a spherical globe, *J. Geophys. Res.*, 103(D10), 11 229–11 234, 1998.
- Liu, J. Y., Tsai, Y. B., and Ma, K. F.: Ionospheric GPS total electron content (TEC) disturbances triggered by the 26 December 2004 Indian Ocean tsunami, *J. Geophys. Res.*, 111, A05303, doi:10.1029/2005JA011200, 2006.
- Mayr, H. G., Harris, I., Varosi, F., and Herrero, F. A.: Global excitation of wave phenomena in a dissipative multiconstituent medium, *J. Geophys. Res.*, 89 (A12), 10 929–10 959, 1984.
- Mayr, H. G., Harris, I., Herrero, F. A., Spencer, N. W., Varosi, F., and Pesnell, W. D.: Thermospheric gravity waves: observations and interpretation using the transfer function model (TFM), *Space Sci. Rev.*, 54, 297–375, 1990.
- Mendillo, M., Rishbeth, H., Roble, R. G., and Wroten, J.: Modelling F2-layer seasonal trends and day-to-day variability driven by coupling with the lower atmosphere, *J. Atmos. and Solar-Terr. Phys.*, 64 (18), 1911–1931, 2002.
- Picone, J. M., Hedin, D. P., Drob, D. P., and Aikin, A. C.: NRLMSISE-00 empirical model of the atmosphere: Statistical comparisons and scientific issues, *J. Geophys. Res.*, 107 (A12), 1468–1474, 2002.
- Pierce, A. D. and Coroniti, S. C.: A mechanism for the generation of acoustic-gravity waves during thunderstorm formation, *Nature.*, 210, 1209–1210, 1966.
- Row, R. V.: Acoustic-gravity waves in the upper atmosphere due to a nuclear detonation and an earthquake, *J. Geophys. Res.*, 72, 1599–1610, 1967.
- Rishbeth, H.: F2-regin links with the lower atmosphere?, *J. Atmos. and Solar-Terr. Phys.*, 68, 469–478, 2006.
- Shen, C. S.: The correlations between the typhoon and the f_oF_2 of ionosphere, *Chinese. J. Space Sci.*, 2, 335–340, 1982.
- Shen, C. S. and Zi, M. Y.: The crossing of cold front and the night f_oF_2 , *Chinese. J. Space Sci.*, 6, 211–215, 1986.
- Šauli, P. and Boška, J.: Tropospheric events and possible related gravity wave activity effects on the ionosphere, *J. Atmos. and Solar-Terr. Phys.*, 63, 945–950, 2001.
- Wan, W. X., Yuan, H., Ning, B. Q., Liang, J., and Ding, F.: Traveling ionospheric disturbances associated with the tropospheric vortexes around Qinghai-Tibet Plateau, *Geophys. Res. Lett.*, 25(20), 3775–3778, 1998.
- Xiao, S. G., Hao, Y. Q., Zhang, D. H., and Xiao, Z.: A case study on whole response processes of the ionosphere to typhoons, *Chinese J. Geophys. (in Chinese)*, 49, 623–628, 2006.
- Yuan, H., Wan, W. X., and Liang, J.: The statistical sources distribution of TIDs observed in central China, *Chinese J. Geophys. (in Chinese)*, 40, 164–169, 1997.
- Yeh, K. C.: Evidence of directional filtering of traveling ionospheric disturbances, *Nature Phys. Sci.*, 235, 131–132, 1972.