



HAL
open science

Combined wind profiler-weather radar observations of orographic rainband around Kyushu, Japan in the Baiu season

Y. Umemoto, M. Teshiba, Y. Shibagaki, H. Hashiguchi, M. D. Yamanaka, S. Fukao

► **To cite this version:**

Y. Umemoto, M. Teshiba, Y. Shibagaki, H. Hashiguchi, M. D. Yamanaka, et al.. Combined wind profiler-weather radar observations of orographic rainband around Kyushu, Japan in the Baiu season. *Annales Geophysicae*, 2004, 22 (11), pp.3971-3982. hal-00317750

HAL Id: hal-00317750

<https://hal.science/hal-00317750>

Submitted on 18 Jun 2008

HAL is a multi-disciplinary open access archive for the deposit and dissemination of scientific research documents, whether they are published or not. The documents may come from teaching and research institutions in France or abroad, or from public or private research centers.

L'archive ouverte pluridisciplinaire **HAL**, est destinée au dépôt et à la diffusion de documents scientifiques de niveau recherche, publiés ou non, émanant des établissements d'enseignement et de recherche français ou étrangers, des laboratoires publics ou privés.

Combined wind profiler-weather radar observations of orographic rainband around Kyushu, Japan in the Baiu season

Y. Umemoto¹, M. Teshiba¹, Y. Shibagaki², H. Hashiguchi¹, M. D. Yamanaka^{3,4}, S. Fukao¹, and X-BAIU-99 and X-BAIU-02 observational groups⁵

¹Research Institute for Sustainable Humanosphere, Kyoto University, Uji, Kyoto 611–0011, Japan

²Osaka Electro-Communication University, Neyagawa, Osaka 572–8530, Japan

³Graduate School of Science and Technology, Kobe University, Kobe 657–8501, Japan

⁴Inst. of Observ. Res. for Global Change, Japan Agency for Marine-Earth Science and Techn., Yokohama 236–0001, Japan

⁵Meteorological Research Institute, Japan Meteorological Agency, Tsukuba, Ibaraki 305–0052, Japan

Received: 6 January 2004 – Revised: 15 June 2004 – Accepted: 2 July 2004 – Published: 29 November 2004

Part of Special Issue “10th International Workshop on Technical and Scientific Aspects of MST Radar (MST10)”

Abstract. A special observation campaign (X-BAIU), using various instruments (wind profilers, C-band weather radars, X-band Doppler radars, rawinsondes, etc.), was carried out in Kyushu (western Japan) during the Baiu season, from 1998 to 2002. In the X-BAIU-99 and -02 observations, a line-shaped orographic rainband extending northeastward from the Koshikijima Islands appeared in the low-level strong wind with warm-moist airs. The weather radar observation indicated that the rainband was maintained for 11 h. The maximum length and width of the rainband observed in 1999 was ~200 km and ~20 km, respectively. The rainband observed in 2002 was not so developed compared with the case in 1999. The Froude number averaged from sea level to the top of the Koshikijima Islands (~600 m) was large (>1), and the lifting condensation level was below the tops of the Koshikijima Islands. Thus, it is suggested that the clouds organizing the rainband are formed by the triggering of the mountains on the airflow passing over them. The vertical profile of horizontal wind in/around the rainband was investigated in the wind profiler observations. In the downdraft region 60 km from the Koshikijima Islands, strong wind and its clockwise rotation with increasing height was observed below 3 km altitude. In addition, a strong wind component perpendicular to the rainband was observed when the rainband was well developed. These wind behaviors were related to the evolution of the rainband.

Key words. Meteorology and atmospheric dynamics (Mesoscale meteorology; convective processes; precipitation)

1 Introduction

The summer monsoon rainfalls are identified as Meiyu in China and Baiu in Japan. A rainfall zone called the Baiu frontal zone stretches from the south of China to the Japan Islands during the Baiu season (June–July). In western Japan, the Baiu frontal zone is characterized by the existence of a low-level jet stream, weak temperature gradient, strong moisture gradient and nearly saturated neutral stratification (e.g. Matsumoto et al., 1970; Akiyama, 1975; Yoshizumi, 1977; Ninomiya, 1984, 1989, 2000, 2001).

Heavy rainfall frequently occurs over a region from the East China Sea to Kyushu, Japan, in the warm-moist airs flowing from the Pacific subtropical anticyclone to the Baiu frontal zone. The most striking feature of rainfalls in Kyushu is the long-lasting orographic rainfall which concentrates in narrow regions. Ogura et al. (1985) analyzed a concentrated heavy rainfall occurring in the Nagasaki Peninsula, in the westernmost part of Kyushu Island. They showed that a rainband migrated over the East China Sea, stopped its migration when its tip reached the Nagasaki area, and remained there for 5 h. It was suggested that the rainband was trapped orographically. Yoshizaki et al. (2000) examined both a wide and a narrow rainband, which appeared stationary and was maintained for a long time over Kyushu, by using a non-hydrostatic spectrum model of MRI/NPD-NHM developed by the Japan Meteorological Agency (JMA). The generating and maintaining mechanisms of the wide rainband were clarified. On the other hand, the narrow rainband was not simulated because the resolutions of the models were not fine enough. To investigate the mechanisms of such rainfall systems, it is necessary first to perform intense observations.

Wind profiler (WP) observations are well suited to examine detailed wind behavior, including the vertical wind component associated with mesoscale cloud systems (~100 km

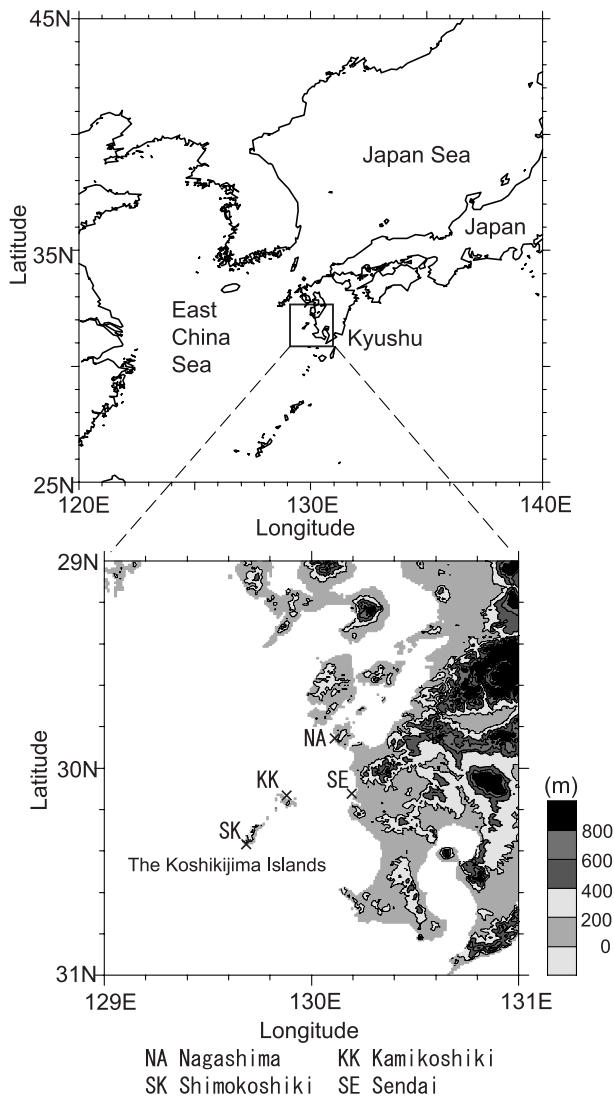


Fig. 1. Topographic map of observation sites.

horizontal extent). Application of the WP technique to the Baiu-frontal atmosphere was initiated by Fukao et al. (1988, 1989), who used a VHF-band profiler (the MU radar). Mesoscale features using the same radar were studied by Watanabe et al. (1994) and Shibagaki et al. (1997, 2000), who observed features in central Japan. Though the characteristics of the Baiu front and the associated large-scale cloud system (more than 100 km) were investigated, small scale disturbances (~ 100 km) were not.

In this study, *L*-band (1.3 GHz frequency) and *S*-band (3 GHz) WPs were operated together with *X*-band Doppler radars, rawinsondes and other instruments, in a special observation campaign called “X-BAIU” which was conducted over the East China Sea and Kyushu during the Baiu seasons from 1998 to 2002 (Kato et al., 2003). During the special observations, narrow rainbands (referred to as “the Koshikijima line”), extending northeastward from the downdraft area of the Koshikijima Islands (see Fig. 1), were observed during

the period on 28–29 June 1999 and 1 July 2002. The main purpose of this paper is to show how combined WP-weather radar observations are an important tool for studies to reveal the mechanism of orographically-affected narrow rainbands such as the Koshikijima line.

A general description of the special observation campaign and the data used in this study follow in Sect. 2. We describe characteristics of the observed narrow rainband and background field in relation to its generation and maintenance process in Sect. 3. In Sect. 4, the generation and development of the Koshikijima line is discussed, based on the observational results. Section 5 contains the conclusions.

2 Data analysis

The field observations “X-BAIU-99” and “X-BAIU-02” were conducted during the periods 15 June–6 July 1999 and 7 June–8 July 2002, respectively. The observation sites around the Koshikijima line are shown in Fig. 1. The Koshikijima Islands are located to the west of Kyushu where the oceanic air flows in directly. It has small low mountains, ranging in the southwest-northeast direction. The mountains are 500–600 m in height, much lower than the central mountains of Kyushu. Nagashima (32.1° N, 130.1° E), referred to as “NA” in this paper, is located on the leeward side of the Koshikijima line, about 50 km northeast of Kamikoshiki (31.9° N, 129.9° E), referred to as “KK”, and its altitude is about 400 m. Sendai (31.9° N, 130.2° E), referred to as “SE”, is located about 40 km east of KK. Upper air soundings were made at Shimokoshiki (31.6° N, 129.9° E) referred to as SK and NA during the observation period in 1999 and also made at NA in 2002.

An *S*-band WP was installed at NA and KK during the observation periods in 1999 and 2002, respectively. *L*-band WPs were installed at NA and SE during the period in 2002. In 2002, three WPs were installed and wind behaviors at the generating point (KK), downwind side (NA) and surrounding area (SE) of the Koshikijima line were observed simultaneously. WPs used in this study are portable phased-array antenna types. WPs can observe clear-air motion which cannot be observed by weather radars. Wind behavior just before and/or after a precipitation event can also be observed. Brief specifications of the *S*-band WP and *L*-band WPs are shown in Table 1. Further details of WPs are described in Hashiguchi (2004) and Yamamoto et al. (2002).

The characteristics of precipitating clouds were observed by the operational *C*-band weather radars operated by JMA, and by two *X*-band Doppler radars installed at NA and SE in the X-BAIU-99 and X-BAIU-02 observations. Brief specifications of the *X*-band Doppler radar is shown in Table 2. The *X*-band Doppler radar at NA did not operate well in the 1999 campaign. The operational radars obtained the horizontal distributions of rainbands widely. The dual Doppler radar analysis (cf. Ishihara et al., 1986) is used to calculate horizontal and vertical wind components to study the three-dimensional wind field.

Table 1. Specifications of the S- and L-band WP.

Location	KK	NA	SE
Antenna	Phased-array antenna		
Operating frequency	3050 MHz (S-band)	1357.5 MHz (L-band)	
Aperture	0.79 m ²	5.9 m ²	6.76 m ²
Transmitter peak power	500 W	2 kW	600 W
Height resolution	50 m		
Height range	0.1–5 km	0.1–10 km	0.12–4

Table 2. Specifications of the X-band DR.

Antenna	Parabolic antenna
Operating frequency	9.41 GHz
Diameter of Antenna	2.3 m
Transmitter peak power	40 kW
Beam width	1.3°
Pulse repetition frequency	2000 Hz
Pulse width	0.45 μs
Sampling interval	125 m
Velocity-resolution	12.5 m s
Sampling range	64 km

Therefore, in this study wind behaviors for several rainbands can be examined in detail by combining the data of X-band Doppler radars and WPs.

The rainband extending northeastward from the Koshikijima Islands was observed from 23:00 JST (JST=UTC+9) on 28 June to 10:00 JST on 29 June 1999, and from 03:00 to 14:00 JST on 1 July 2002 by the JMA operational radars. Figures 2 and 3 show horizontal distributions of precipitation intensity at 2 km altitude at 02:00 JST (Fig. 2a), 07:22 JST (Fig. 2b) on 29 June 1999 and at 12:30 JST on 1 July 2002 (Fig. 3). In this study, we identified three periods, A, B, and C, based on the width and length of the rainband. The period from 23:00 JST on 28 June to 03:00 JST on 29 June 1999, were classified as period A, from 03:00 to 10:00 JST on 29 June 1999 as period B and from 03:00 to 14:00 JST on 1 July 2002 as period C. We define the three cases: for period A, the rainband was most developed; for period B, the rainband was less strongly developed, for period C, the rainband was developed weakly. In addition to these three periods, period D, from 14:00 to 16:00 JST on 1 July 2002, after the Koshikijima line had decayed, is shown for comparison.

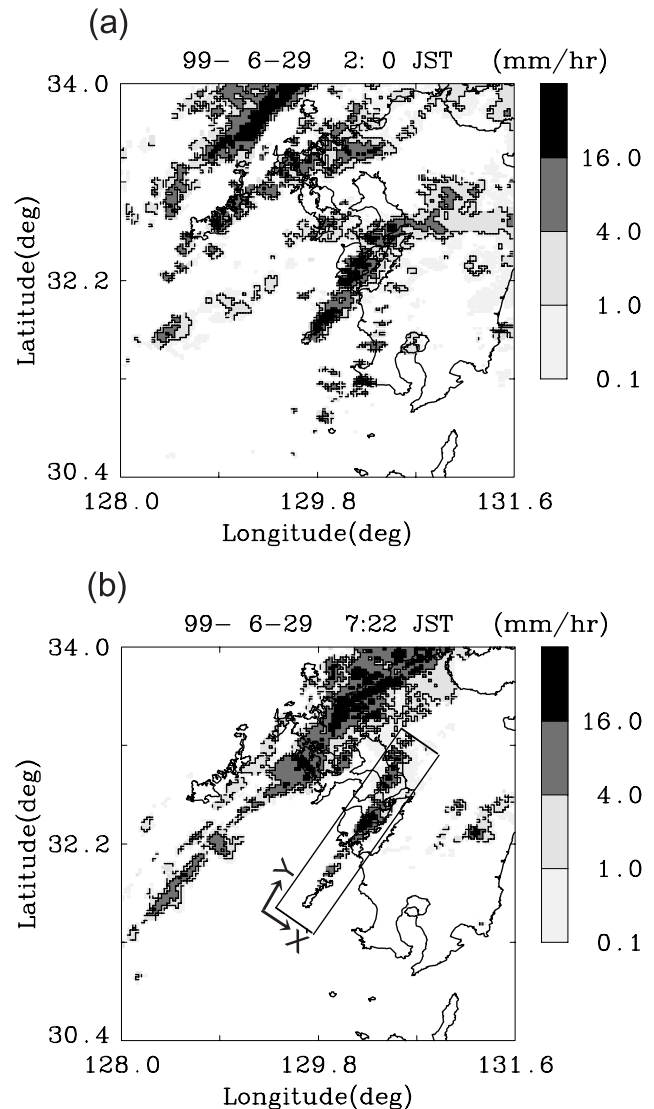


Fig. 2. Horizontal distributions of precipitation echo intensity at 2 km height observed by JMA operational radars at (a) 02:00 and (b) 07:22 JST on 29 June 1999 when orographic rainband denoted as the Koshikijima line was seen.

3 Results

3.1 Characteristics of the Koshikijima line

As shown in Figs. 2 and 3, the Koshikijima line was a narrow rainband of width and length ~20 km and ~200 km, respectively, and extended to the leeward side of the background wind. The precipitation area corresponding to the Baiu front was also observed on the north of Kyushu.

In 1999, the Koshikijima line was aligned in the northeastward direction (about 35° from north), and was observed around 23:00 JST on 29 June. The wide (~20 km), long (~200 km) and strong (more than 32 mm/h) precipitation echoes were observed and the Koshikijima line was well developed until 03:00 JST on 29 June (period A).

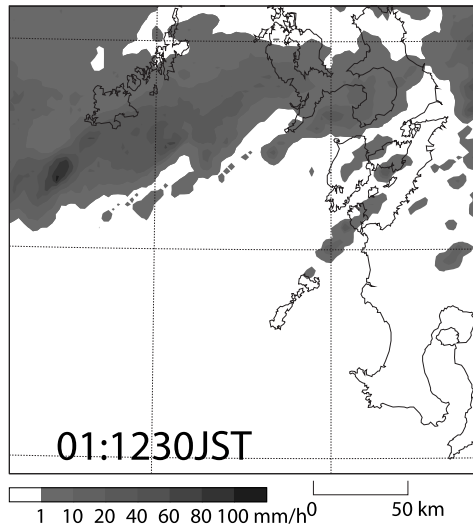


Fig. 3. Horizontal distributions of precipitation echo intensity at 2 km height observed by JMA operational radars at 12:30 JST on 1 July 2002.

After 03:00 JST, the width of the echoes narrowed (~ 10 km), and the rainband merged into the Baiu front going southward around 10:00 JST (period B). The Koshikijima line was not so developed during period B compared with period A. Though the Baiu front went southward gradually, the Koshikijima line stagnated without changing its position for about 11 h.

In 2002, the Koshikijima line was observed aligned in the northeastward direction (about 40° from North) from 03:00 to 14:00 JST on 1 July 2002 (period C). The width and length of precipitation intensity were smaller (~ 8 and ~ 120 km) than those observed in 1999, it was not so developed compared to the rainband observed in periods A and B. A rainband corresponding to the Baiu front was also observed in the north of Kyushu for this case. Though the rainband gradually went southward, the Koshikijima line stagnated without changing its position, as in 1999.

The surface weather charts at 09:00 JST on 29 June 1999 and 1 July 2002 are shown in Fig. 4. In each case, the Baiu front extending east-westward was seen. Along 130° E, it was located to the north of Kyushu. The southern part of Kyushu was located in the warm sector of a low.

Figure 5 shows the north-south vertical cross sections of equivalent potential temperature θ_e along 130° E using Regional objective ANALysis (RANAL) data produced by JMA at 09:00 JST on a) 29 June 1999 and b) 1 July 2002. In each case, the atmosphere was convectively unstable in the south of the Baiu frontal zone (from 32° – 35° N), and stable in the north of the Baiu frontal zone. High θ_e was restricted below the 850 hPa level and south of 32° N. Since the areas of high humidity were also restricted to the same region, the potential temperature depended on the amount of water vapor. The Koshikijima Islands are located around 30° N, and a convectively unstable and moist atmosphere existed in the

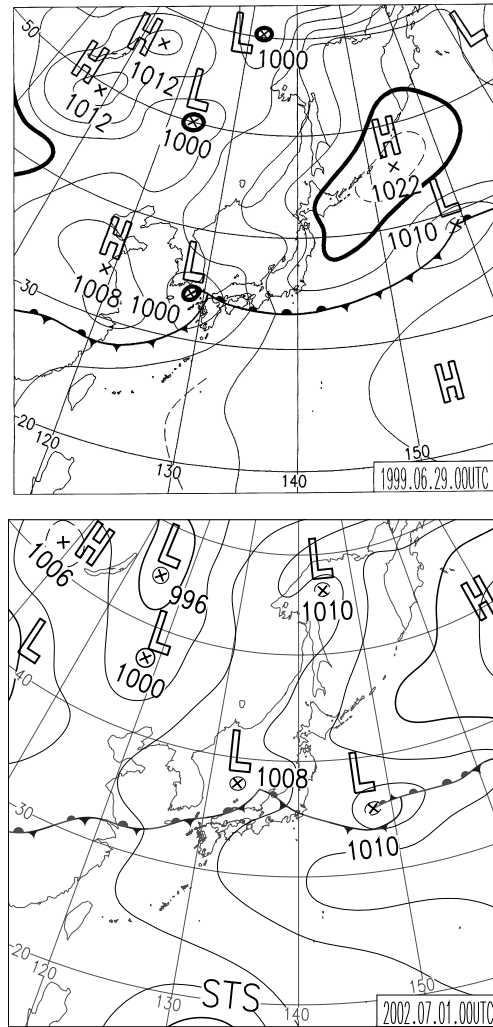


Fig. 4. Surface weather charts at 09:00 JST on 29 June 1999 and on 1 July 2002.

area at lower altitude below 850 hPa level. These synoptic overviews around Kyushu did not change much when the Koshikijima line was observed.

Figure 6 indicates time series of the maximum rainfall intensity observed by X-band Doppler radar at SE along the X-axis of the rectangle shown in Fig. 2b) of which X- and Y-axes corresponded to the direction from northwest to southeast and from southwest to northeast, respectively, at 1, 2 and 3 km altitudes. The precipitation echoes generated in the southwest of SK and moving in the direction of NA, one after another, were observed in periods A and B. The echo intensity in period A was stronger than that in period B. In period C the precipitation echoes were generated over the Koshikijima Islands and moved northeastward. Different from the case in periods A and B, precipitating cells were not generated continuously. Horizontal velocity of the radar echo calculated from inclination was 20.0 m/s and changed little in periods A and B. The speed of period C was 12.0 m/s from 07:00 until 08:00 JST, and 8.9 m/s after

Table 3. Atmospheric parameters for each observation location.

Location	Date	LCL(m)	CAPE	<i>Fr</i>	<i>q</i> (g/Kg)	RH(%)
Before A	SK	28 June 1999/22:30	889	1031.3	1.8	16.6
A	NA	28 June 1999/23:30	1008	377.3	2.6	15.2
A	NA	29 June 1999/2:30	342	1596.2	2.1	16.6
B	SK	29 June 1999/4:30	374	1910.2	2.5	17.3
B	SK	29 June 1999/7:30	642	2057.2	1.3	18.4
Before C	NA	30 June 2002/20:30	136	346.8	0.5	13.2
C	NA	1 July 2002/2:30	237	1635.6	1.3	15.8
C	NA	1 July 2002/8:30	314	1835.6	1.4	15.9
C	NA	1 July 2002/2:30	171	2531.7	1.1	14.9

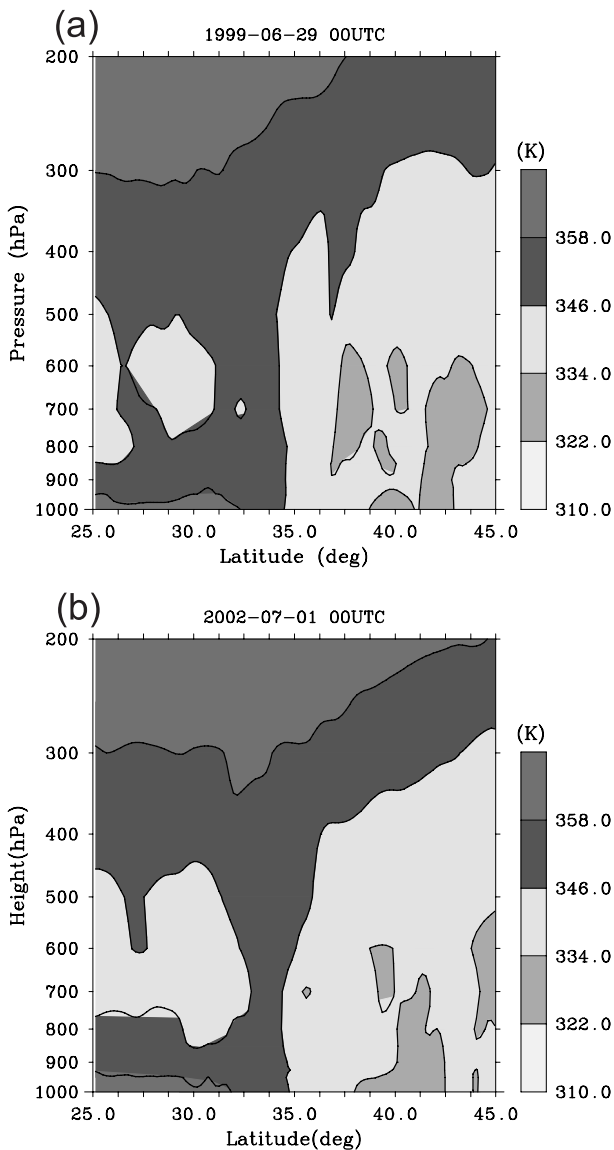


Fig. 5. North-south vertical cross sections of equivalent potential temperature along 130° E.

10:00 JST. In each case, the speed was almost constant and the position of echoes did not differ with altitude.

3.2 Background field generating the Koshikijima line

Parameters calculated using rawinsondes launched at SK and NA are shown in Table 3. We calculated the Froude number (*Fr*) as $Fr = U/Nh$, where *U* is horizontal wind speed averaged below 600 m altitude, *h* is the height of the mountains of the Koshikijima Islands (600 m), and *N* is the Brunt-Väisälä frequency. Specific humidity (*q*) and relative humidity (RH) are values at 950 hPa level. While the Koshikijima line was observed (through periods A, B and C), Lifting Condensation Level (LCL) was below 400 m, which is below the tops of the mountains in the Koshikijima Islands except for the data at 07:30 JST on 29 June 1999 and CAPE (Convective Available Potential Energy) was large enough to develop precipitating clouds. In particular, *Fr* was more than 2 in period A. Throughout periods A, B and C very moist air in which *q* was more than 15 g/kg existed below 600 m altitude and the layer below 3 km altitude was convectively unstable around the Koshikijima line. Figure 7 is the same as Fig. 6 but observed by JMA operational radars. In period A strong and stationary rainfall was observed and precipitating clouds were generated in the region between 0.0° and 0.4°, which corresponds to the southwest of the Koshikijima Islands, and moved northeastward, one after another. On the other hand, precipitating clouds were generated over the Koshikijima Islands and precipitating intensity was comparatively weak in periods B and C. We consider that the rainband was generated through condensation and developed more rapidly in period A compared to that of the other periods. The stationary rainband which also developed around NA and moved northeastward was observed in periods A and B, while the rainband observed in period C was not maintained for a long time and was weakened around the northeast of NA. The length of the rainbands observed in 1999 and 2002 was about 200 km and 120 km, respectively. We consider that the difference in the length of rainbands depends on whether the rainband is able to develop around NA or not.

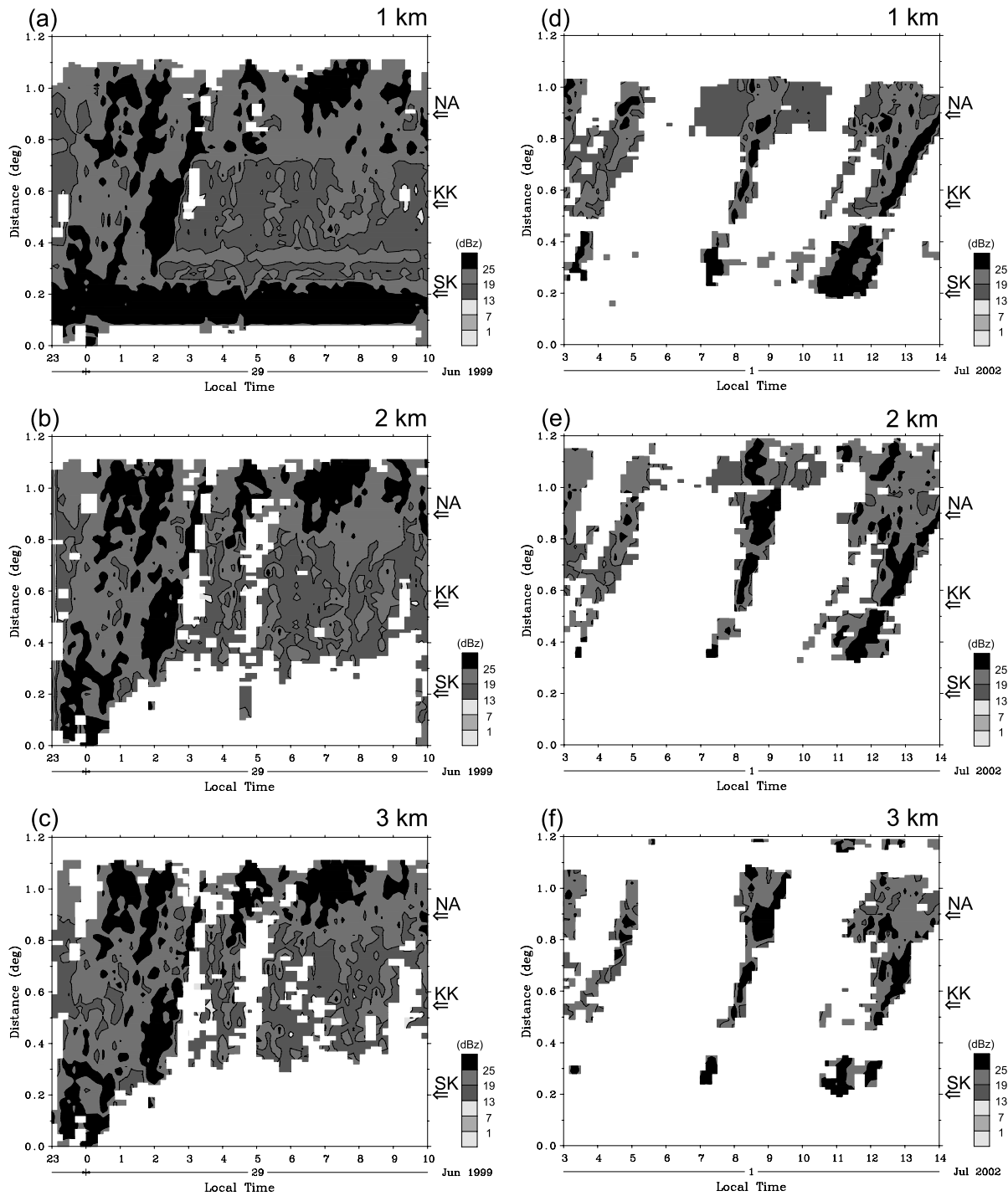


Fig. 6. Time series of the maximum rainfall intensity of an X-axis in a rectangle, as shown in Fig. 2, observed by X-band radar at SE on 28–29 June 1999 ((a)–(c)) and 1 July 2002 ((d)–(f)). A vertical axis corresponds to Y-axis in Fig. 2. Positions of NA, KK, and SK are indicated by arrows. See corrected section in paper.

3.3 Wind behavior along the Koshikijima line

Figure 8 shows horizontal distribution of specific humidity and horizontal flux of water vapor at 950 hPa level calculated from RANAL at 09:00 JST on a) 29 June 1999 and b) 1 July 2002. Though there was little difference in the

quantity of specific humidity southwest of Kyushu, horizontal flux of vapor was much stronger in 1999 compared with 2002. That difference was brought about by the wind velocity difference. These synoptic overviews around Kyushu did not change much when the Koshikijima line was observed.

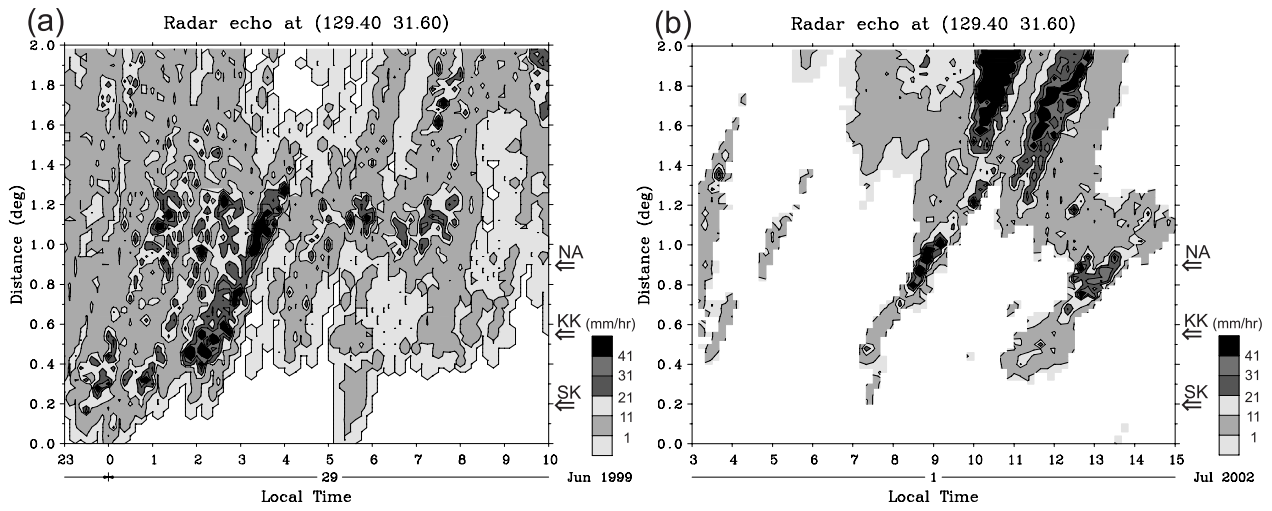


Fig. 7. The same as Fig. 6 but observed by JMA operational radars at 2 km altitude on (a) 29 June 1999 and (b) 1 July 2002.

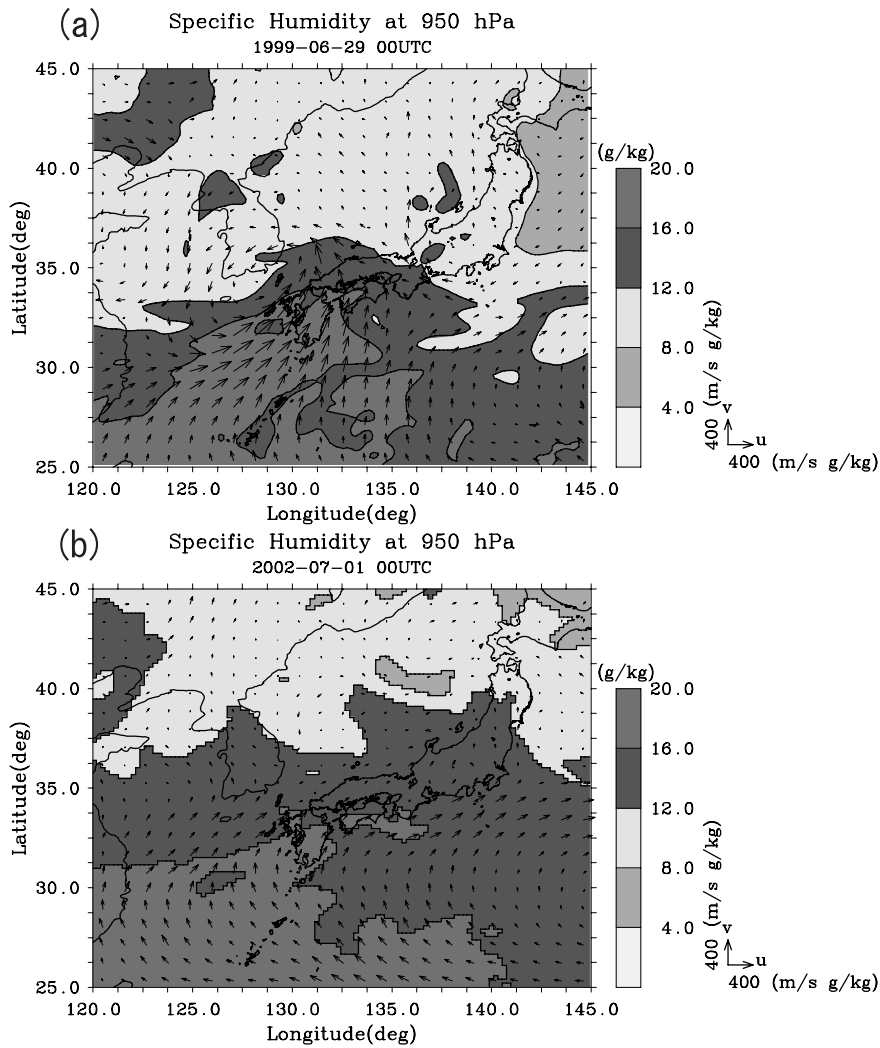


Fig. 8. Horizontal atmospheric fields of specific humidity (contours) and horizontal flux (arrows) at 950 hPa level.

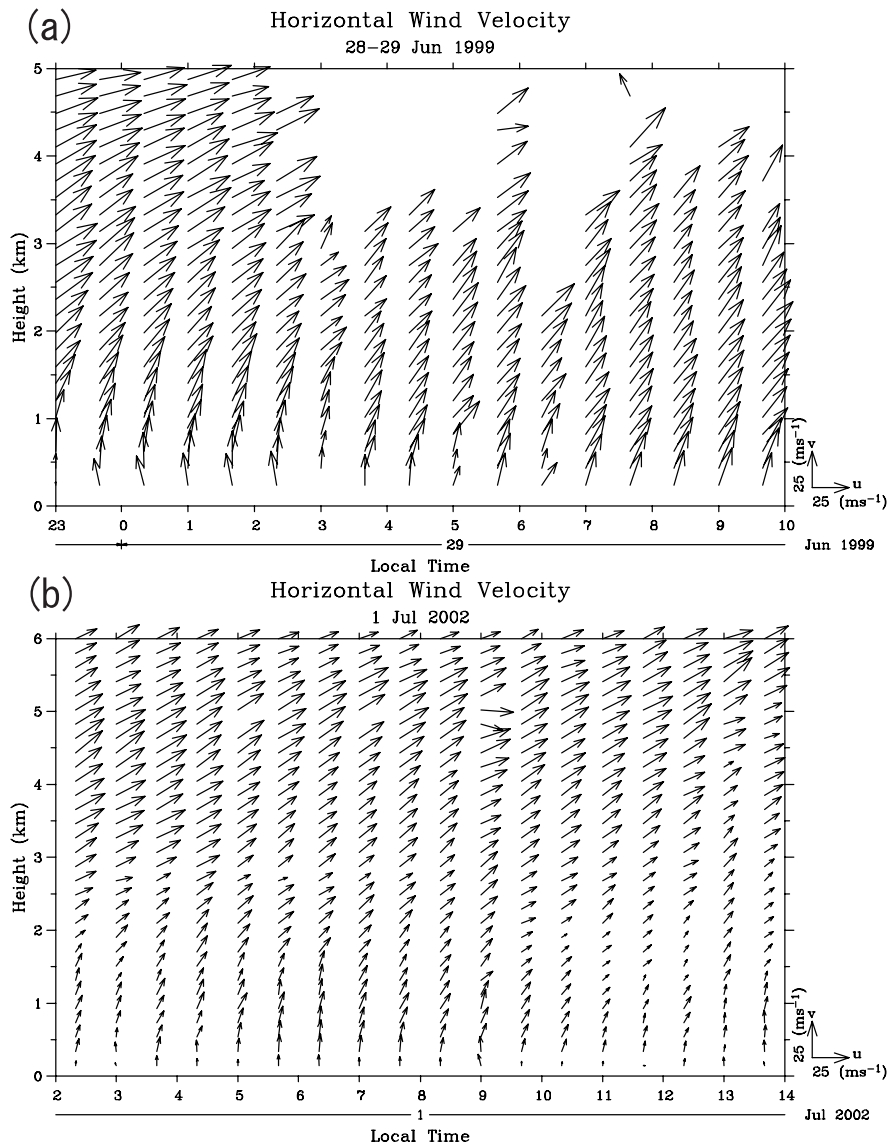


Fig. 9. Time-height cross sections of horizontal wind observed by WP at (a) NA on 28–29 June 1999 and (b) NA on 1 July 2002.

Figure 9 shows horizontal wind observed by WPs installed around the Koshikijima line. From 23:00 JST on 28 June to 10:00 JST on 29 June (Fig. 9a), while the Koshikijima line was observed, the horizontal wind was very strong (more than 25 m/s) and southwesterly wind was dominant from the surface up to 5 km altitude. The horizontal speed of precipitating clouds described in the previous subsection and wind averaged from the surface to 3 km altitude was in agreement. The wind direction changed clockwise below 3 km altitude. Yoshizaki et al. (2000) also found a similar clockwise rotation of wind direction with height for the Nagasaki line, on 26 June 1998. On the other hand, wind direction was almost constant from 3 to 5 km.

In 2002, while the Koshikijima line was observed, the southwesterly wind was dominant and the wind speed increased with height, and the upward clockwise rotation of

the wind direction was also observed at NA (Fig. 9b). The horizontal speed of precipitating clouds were almost consistent with wind averaged from the surface up to 3 km. The wind speed was smaller than that observed in 1999, while its direction was almost consistent with that in 1999 below 3 km altitude. Wind behavior observed by WP at KK was almost similar to that of NA. Compared with the data observed at KK and NA, both wind speed and upward clockwise rotation of horizontal wind were weak at SE.

Figure 10 shows hodographs of horizontal wind observed by WP at NA and SE. Through periods A, B and C a wind component parallel to the rainband was observed below 3 km altitude.

The component became weak when the Koshikijima line decayed, as in period D. That component of wind was especially strong in period A compared with B and C. Comparing

B and C, though the component did not differ much, absolute value of the wind velocity did show a marked difference. Therefore, we consider that the perpendicular component of horizontal wind and wind velocity were associated with the development of the rainband. Although it was comparatively weak, the perpendicular component was also observed at SE, as well as inside the rainband. Therefore, we think that this wind behavior existed not as a result of the rainband generation but as the background field itself. We investigated the wind inside the rainband using the X-band Doppler radars. The rainband area was divided into five regions (1–5) on the X–Y line shown in Fig. 11. A mean wind is calculated for each region. Fig. 11 (1–5) show hodographs of horizontal wind calculated for each region. A strong component perpendicular to the rainband was observed below 3 km altitude at each region similar to wind observed by WPs at NA and KK. The component was especially strong at region 1, over the Koshikijima Islands, and it became weaker at region 3, northeast of the Koshikijima Islands.

4 Discussion

4.1 Generating mechanisms of the Koshikijima line

The structure of the narrow rainband was generated and maintained for a long time by the following process. Convective cells were generated continuously because of the orographic features of the Koshikijima Islands. The cells were advected to leeward by the lower wind (~ 3 km altitude), one after another, and then formed the rainband.

While the Koshikijima line was observed, LCLs were lower than the tops of the mountains in the Koshikijima Islands and there was convectively unstable and very moist air in the lower layer of the atmosphere (below 850 hPa level). In addition, the value of the CAPE index was large enough to generate precipitating clouds. Therefore, if there was airflow ascending to the peaks of the Koshikijima Islands, a necessary condition for the generation of clouds was satisfied, namely the upslope triggering for the convection, one of the seven mechanisms of orographic precipitation classified by Houze (1993). It is plausible that these clouds were generated mainly as a result of upslope condensation by the orographic effect because Fr was much larger than 1. Following Smolarkiewicz and Rotunno (1989, 1990), the airflow with large Fr (>1) among the present cases should rise over the mountains. If the rainband was generated as a result of convergence at the leeward side of the Koshikijima Islands, Fr should be less than 1. When Fr is small, the Brunt-Väisälä frequency becomes large and/or horizontal wind is weak. The larger the Brunt-Väisälä frequency becomes, the more stable the atmosphere becomes, and the flux of water vapor become small when the horizontal wind is weak. Therefore, if Fr is small, the rainband is not so developed.

While the Koshikijima line was observed, through periods A, B and C, the direction of the wind changed clockwise and a strong wind component perpendicular to the rain-

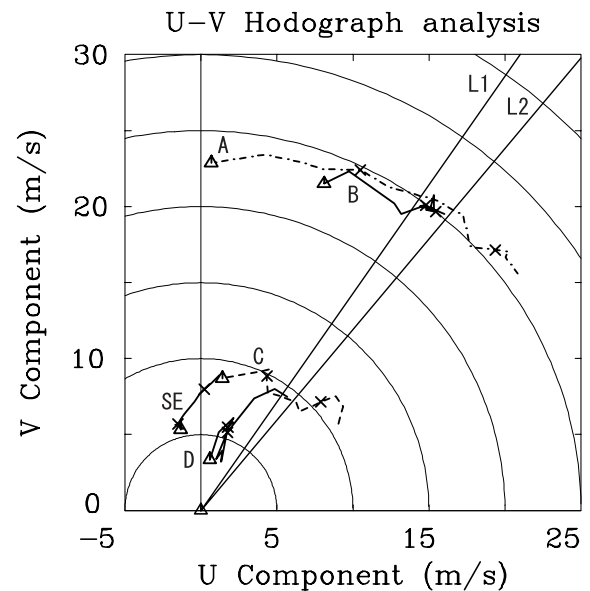


Fig. 10. Hodographs of horizontal wind at NA in periods A, B, C and D (when the Koshikijima line was not observed) and at SE in the period C. The lines L1 and L2 indicate the direction parallel to the rainband in 1999 and 2002, respectively. Triangles (Δ) indicate surface, and crosses (\times) are put on the curve at 1 km height intervals.

band was observed below 3 km altitude. On the other hand, the component weakened after the Koshikijima line decayed, in period D. Barnes and Sieckman (1984), Alexander and Young (1992) and LeMone et al. (1998) examined the role of background wind shear in determining the structure of rainbands over tropical oceans. They concluded that nearly all rainbands occurring in winds with appreciable shear below a low-level wind maximum are oriented nearly normal to the direction of low-level shear (fast-moving squall line), while rainbands where the low-level shear is weak are oriented along the direction of the middle-level shear (slow-moving rainband). The Koshikijima line had strong low-level shear below 3 km altitude, but it was a stationary band. Thus, the classification rules are not applied to the Koshikijima line. We consider that the horizontal wind component parallel to the rainband blew convective cells, and the perpendicular component played the role of supply water vapor to the rainband. Therefore, the Koshikijima line decayed when the perpendicular component was weak because the supplying of water vapor became weak.

4.2 Development mechanisms of the Koshikijima line

From comparison of the analysis for periods A, B and C the following factors contributed to the development of the Koshikijima line. High flux of water vapor in a lower layer: In periods A and B, high flux of water vapor in a lower layer was observed, though the amount of humidity did not differ much compared with that in period C. In order to generate and develop the rainband, it is necessary not only to have

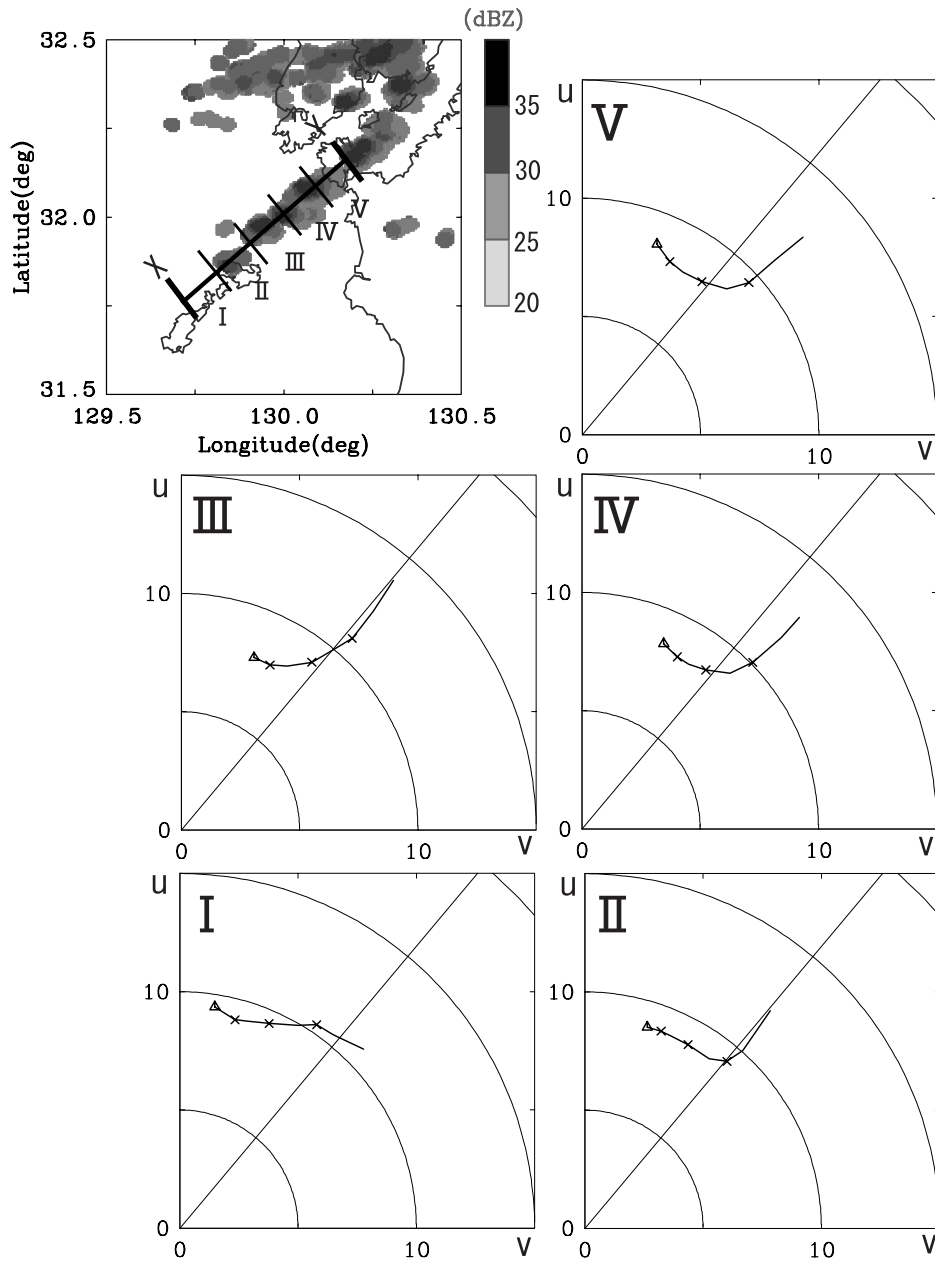


Fig. 11. Doppler radar at 12:20 JST on 1 July 2002 and hodographs of horizontal wind averaged from 11:00 to 13:00 JST on 1 July at regions 1,2,3,4,5. Triangles (Δ) indicate surface, and crosses (\times) are put on the curve at 1 km height intervals.

highly humid air but also strong wind to convey water vapor to the rainband in the lower layer. The difference of wind speed was also observed by WPs from comparison between periods B and C.

A horizontal wind component perpendicular to the Koshikijima line: When the Koshikijima line was well developed, a strong wind component perpendicular to the rainband was observed. When a wind component perpendicular to the rainband is large, water vapor can be supplied easily and able to develop the rainband well. This wind behavior was also observed inside the rainband and already existed when the Koshikijima line was being generated, though wind can also be strengthened as a result of the generation of the rainband.

Atmosphere with low LCL and large Fr : Since the mountains existing around NA, the downdraft side of the Koshikijima line, are lower than that of the Koshikijima Islands, the conditions forming and developing precipitating clouds become more severe. When Fr is much larger than 1 and LCL is below 400 m (the top of NA), the rainband can be developed by upslope condensation not only around the Koshikijima Islands but also around NA. When these conditions are realized, precipitating clouds are formed or developed around NA. Then they are blown northeastward and lengthen the rainband.

5 Conclusions

On 28–29 June 1999 and 1 July 2002 during the observation period of the X-BAIU-99 and -02, orographic rainbands, the Koshikijima line, extending northeastward from the Koshikijima Islands were observed. We have demonstrated the following features of the narrow rainbands.

1. Horizontal distribution of precipitation observed by the C- and X-band radar: The Koshikijima line observed in 1999 was maintained for 11 h. It was well developed especially until 03:00 JST and was about 200 km in length and 20 km in width for 4 h from the beginning. The Koshikijima line observed in 2002 repeated development and decay for 11 h, and the maximum size of the precipitating area was about 120 km in length and 10 km in width. Convective cells were generated around the Koshikijima Islands and advected to leeward by the lower wind, one after another, and then formed the rainband.
2. Features of lower atmosphere observed by rawinsondes: Convectively unstable stratification was found below 3 km height. The Froude number, averaged in a layer from the sea surface to the top of the Koshikijima Islands (~ 600 m), was large (>1), and the LCL was below the tops of the mountains in the Koshikijima Islands. CAPE was large enough to develop precipitating clouds and there was much water vapor in the lower layer. It is reasonable that upslope airflow in this layer can trigger convections forming the Koshikijima line.
3. Flux of water vapor and specific humidity analysis using RANAL: Comparing the cases in 1999 and 2002, there was a significant difference in the flux of water vapor and this difference depended on wind speed, since there was not a large difference in specific humidity at the 950 hPa level.
4. Vertical-temporal variations of wind observed by WPs and Doppler radars: While the Koshikijima line appears, the component of the horizontal wind perpendicular to the Koshikijima Islands (or the rainband) is large in the height range 1–3 km. This feature was observed almost everywhere inside the rainband. The wind direction in the height range became parallel to the Koshikijima Islands after the Koshikijima line decayed. We consider that the horizontal wind component parallel to the rainband blew convective cells, and the perpendicular component played the role of supplying water vapor to the rainband.

We have established a network observation method for orography-affected rainband system formation like the Koshikijima line, using wind profilers and weather radars. Similar methods may be applicable to other regions, and we are now planning on also using a VHF-band wind profiler (the MU radar) in the central part of Japan in the Baiu season

in 2004. There are still many problems for the generating and developing mechanisms of the rainband system with the objective of scientific interests and social necessities like disaster prevention.

Acknowledgements. The authors thank M. Yoshizaki and T. Kato of the Meteorological Research Institute, the Japan Meteorological Agency and X-BAIU observation members for providing the data, useful discussions and for their encouragement. The X-BAIU special observation was conducted mainly through funding from the Japan Science and Technology Corporation-Core Research for Evolutional Science and Technology. The first author (Y. Umemoto) is supported by a grant (16004021) of the Japan Society for the Promotion of Science (JSPS) under the Fellowships for Japanese Junior Scientists. The present study was financially supported by Scientific Grants-in Aids (16004021) of the Ministry of Education, Culture, Sports, Science and Technology of Japan. A part of this research was financially supported by Grant-in Aid for University Cooperative Research Promotion of Osaka Electro-Communication University in 2002. S- and L-band WPs installed at Kamikoshiki and Nagashima were collaboratively developed by Sumitomo Electric Industries, Ltd. and Research Institute for Sustainable Humanosphere (RISH) (former Radio Science Center for Space and Atmosphere (RASC)) of Kyoto University, Japan.

Topical Editor O. Boucher thanks a referee for his help in evaluating this paper.

References

- Akiyama, T.: Southerly transversal moisture flux into the extremely intense rainfall zone in the Baiu season, *J. Meteor. Soc. Japan*, 53, 304–316, 1975.
- Alexander, G. D. and Young, G. S.: The relationship between EMEX mesoscale precipitation feature properties and their environmental characteristics, *Mon. Weath. Rev.*, 120, 554–564, 1992.
- Barnes, G. M. and Sieckman, K.: The environment of fast- and slow-moving tropical mesoscale convective cloud lines, *Mon. Weath. Rev.*, 112, 1782–1794, 1984.
- Fukao, S., Yamanaka, M. D., Sato, T., Tsuda, T., and Kato, S.: Three-dimensional air motions over the Baiu front observed by a VHF-band Doppler radar: A case study, *Mon. Weath. Rev.*, 116, 281–292, 1988.
- Fukao, S., Yamanaka, M. D., Matsumoto, H., Sato, T., Tsuda, T., and Kato, S.: Wind fluctuations near a cold vortex-tropopause funnel system observed by the MU radar, *Pure Appl. Geophys.*, 130, 463–479, 1989.
- Hashiguchi, H.: The development and observation by the Radio Science Center for Space and Atmosphere, Kyoto university: The note of meteorological study, edit by T. Kobayashi, *Meteorological Society Japan*, in Japanese, 205, 109–118, 2004.
- Houze, R. A. Jr.: *Cloud Dynamics*, Academic Press, 570, 1993.
- Ishihara, M., Yanagisawa, Z., and Sakakibara, H.: Structure of a typhoon rainband observed by two Doppler radars, *J. Meteor. Soc. Japan*, 64, 923–939, 1986.
- Kato, T., Yoshizaki, M., Bessho, K., Inoue, T., Sato, Y., and X-BAIU-01 observation group: Reason for the failure of the simulation of heavy rainfall during X-BAIU-01—Importance of a vertical profile of water vapor for numerical simulations—, *J. Meteor. Soc. Japan*, 81, 993–1013, 2003.

- LeMone, M. A., Zipser, E. J., and Trier, S. B.: The role of environmental shear and thermodynamic conditions in determining the structure and evolution of mesoscale convective systems during TOGA COARE, *J. Atmos. Sci.*, 55, 3493–3518, 1998.
- Matsumoto, S., Yoshizumi, S., and Takeuchi, M.: On the structure of the Baiu front and associated intermediate-scale disturbance in the lower atmosphere, *J. Meteor. Soc. Japan*, 48, 479–491, 1970.
- Ninomiya, K.: Characteristics of the Baiu front as a predominate subtropical front in the summer Northern Hemisphere, *J. Meteor. Soc. Japan*, 62, 880–894, 1984.
- Ninomiya, K.: Cloud distribution over East Asia during Baiu period in 1979, *J. Meteor. Soc. Japan*, 67, 639–658, 1989.
- Ninomiya, K.: Large- and Meso- α -scale characteristics of Meiyu-Baiu front associated with intense rainfalls in 1–10 July 1991, *J. Meteor. Soc. Japan*, 78, 141–157, 2000.
- Ninomiya, K.: Large γ -shaped cloud zone formed around 6 July 1991 with pole-ward moisture transport from intense rainfall area in Meiyu-Baiu front, *J. Meteor. Soc. Japan*, 79, 805–813, 2001.
- Ogura, Y., Asai, T., and Dhohi, K.: A case study of a heavy precipitation event along the Baiu front in northern Kyushu, *J. Meteor. Soc. Japan*, 63, 883–900, 1985.
- Shibagaki, Y., Yamanaka, M. D., Hashiguchi, H., Watanabe, A., Uyeda, H., Maekawa, Y., and Fukao, S.: Hierarchical structures of vertical velocity variations near the Baiu front observed by the MU radar, *J. Meteor. Soc. Japan*, 75, 569–596, 1997.
- Shibagaki, Y., Yamanaka, M. D., Shimizu, S., Uyeda, H., Watanabe, A., Maekawa, Y., and Fukao, S.: Meso- β to γ -scale wind circulations associated with precipitating cloud near Baiu front observed by the MU and meteorological radars, *J. Meteor. Soc. Japan*, 78, 69–91, 2000.
- Smolarkiewicz, P. K. and Rotunno, R.: Low Froude number flow past three-dimensional obstacles. Part I: Baroclinically generated lee vortices, *J. Atmos. Sci.*, 46, 1154–1164, 1989.
- Smolarkiewicz, P. K. and Rotunno, R.: Low Froude number flow past three-dimensional obstacles. Part II: Upwind flow reversal zone, *J. Atmos. Sci.*, 47, 1498–1511, 1990.
- Watanabe, A., Fukao, S., Yamanaka, M. D., Sumi, A., and Uyeda, H.: A rotor circulation near the Baiu front observed by the MU radar, *J. Meteor. Soc. Japan*, 72, 91–105, 1994.
- Yamamoto, M., Hashiguchi, H., Fukao, S., Shibano, Y., and Imai, K.: Development of a transportable 3-GHz wind profiler for wind and precipitation studies, *J. Meteor. Soc. Japan*, 80, 273–283, 2002.
- Yoshizaki, M., Kato, T., Tanaka, Y., Takayama, H., Shoji, Y., Seko, H., Arao, K., Manabe, K., and Members of X-BAIU-98 observation: Analytical and numerical study of the 26 June 1998 orographic rainband observed in western Kyushu, Japan, *J. Meteor. Soc. Japan*, 78, 835–856, 2000.
- Yoshizumi, S.: On the structure of intermediate-scale disturbances on the Baiu front, *J. Meteor. Soc. Japan*, 55, 107–120, 1977.