



HAL
open science

The statistical dependence of auroral absorption on geomagnetic and solar wind parameters

A. J. Kavanagh, M. J. Kosch, F. Honary, A. Senior, S. R. Marple, E. E. Woodfield, I. W. Mccrea

► **To cite this version:**

A. J. Kavanagh, M. J. Kosch, F. Honary, A. Senior, S. R. Marple, et al.. The statistical dependence of auroral absorption on geomagnetic and solar wind parameters. *Annales Geophysicae*, 2004, 22 (3), pp.877-887. hal-00317267

HAL Id: hal-00317267

<https://hal.science/hal-00317267>

Submitted on 18 Jun 2008

HAL is a multi-disciplinary open access archive for the deposit and dissemination of scientific research documents, whether they are published or not. The documents may come from teaching and research institutions in France or abroad, or from public or private research centers.

L'archive ouverte pluridisciplinaire **HAL**, est destinée au dépôt et à la diffusion de documents scientifiques de niveau recherche, publiés ou non, émanant des établissements d'enseignement et de recherche français ou étrangers, des laboratoires publics ou privés.

The statistical dependence of auroral absorption on geomagnetic and solar wind parameters

A. J. Kavanagh^{1,2}, M. J. Kosch^{3,4}, F. Honary³, A. Senior³, S. R. Marple³, E. E. Woodfield¹, and I. W. McCrea⁵

¹High Altitude Observatory, NCAR, PO Box 3000, Boulder, Co., 80307-3000, USA

²formerly at: the Department of Communications Systems, Lancaster University, Lancaster, UK, and the EISCAT Group, Space Science and Technology Dept., Rutherford Appleton Laboratory, Chilton, Didcot, UK

³Department of Communications Systems, Lancaster University, Lancaster, UK

⁴Honorary Research Fellow, University of Natal, Durban 4041, South Africa

⁵EISCAT Group, Space Science and Technology Dept., Rutherford Appleton Laboratory, Chilton, Didcot, Oxfordshire, UK

Received: 18 February 2003 – Revised: 31 July 2003 – Accepted: 5 August 2003 – Published: 19 March 2004

Abstract. Data from the Imaging Riometer for Ionospheric Studies (IRIS) at Kilpisjärvi, Finland, have been compiled to form statistics of auroral absorption based on seven years of observations. In a previous study a linear relationship between the logarithm of the absorption and the K_p index provided a link between the observations of precipitation with the level of geomagnetic activity. A better fit to the absorption data is found in the form of a quadratic in K_p for eight magnetic local time sectors. Past statistical investigations of absorption have hinted at the possibility of using the solar wind velocity as a proxy for the auroral absorption, although the lack of available satellite data made such an investigation difficult. Here we employ data from the solar wind monitors, WIND and ACE, and derive a linear relationship between the solar wind velocity and the cosmic noise absorption at IRIS for the same eight magnetic local time sectors. As far as the authors are aware this is the first time that in situ measurements of the solar wind velocity have been used to create a direct link with absorption on a statistical basis. The results are promising although, it is clear that some other factor is necessary in providing reliable absorption predictions. Due to the substorm related nature of auroral absorption, this is likely formed by the recent time history of the geomagnetic activity, or by some other indicator of the energy stored within the magnetotail. For example, a dependence on the southward IMF (interplanetary magnetic field) is demonstrated with absorption increasing with successive decreases in B_z ; a northward IMF appears to have little effect and neither does the eastward component, B_y .

Key words. Magnetospheric physics (energetic particles, precipitating; solar wind-magnetosphere interactions) – Ionosphere (modeling and forecasting)

1 Introduction

Understanding the variation of High Frequency (HF) radio absorption in the auroral zone is of great importance for determining HF radio propagation conditions. Linking the absorption to parameters measured in real time, such as the solar wind velocity or interplanetary magnetic field (IMF) orientation, can lead to improved prediction models. Many workers have performed statistical studies of riometer absorption in the past (e.g. Holt et al., 1961; Hartz et al., 1963; Driatsky, 1966; Hargreaves and Cowley, 1967) and the results tend to confirm a diurnal variation in the absorption pattern. Differences have arisen depending on the method of compiling the statistics (Hargreaves, 1969); by sampling absorption at regular intervals a maximum in the morning sector is emphasized, whereas through identification of discrete events a peak before magnetic midnight is highlighted. Absorption sampled at too low a frequency will also de-emphasise the midnight peak. Similarly, different parameters have been chosen to reproduce the morphology of the absorption oval; these include the mean and median of the distributions and the occurrence of absorption above a threshold level (e.g. 1 dB at a given riometer frequency) (Hargreaves, 1966; Hargreaves and Cowley, 1967; Foppiano and Bradley, 1985).

Identification of the occurrence of absorption has led to the development of prediction models (e.g. Foppiano and Bradley, 1983 and 1984) that depend both on MLT (magnetic local time) and the level of geomagnetic activity. Hargreaves (1966) examined quantitative relationships between observed absorption and the K_p and A_p geomagnetic indices, and used the limited available data to link the energy deposition to the solar wind speed. This highlighted the dependence of absorption on the solar wind speed, demonstrating an important effect in the coupling of interplanetary space phenomena to the ionosphere.

In recent years regular monitoring of the solar wind conditions has become available from the ACE (Advanced

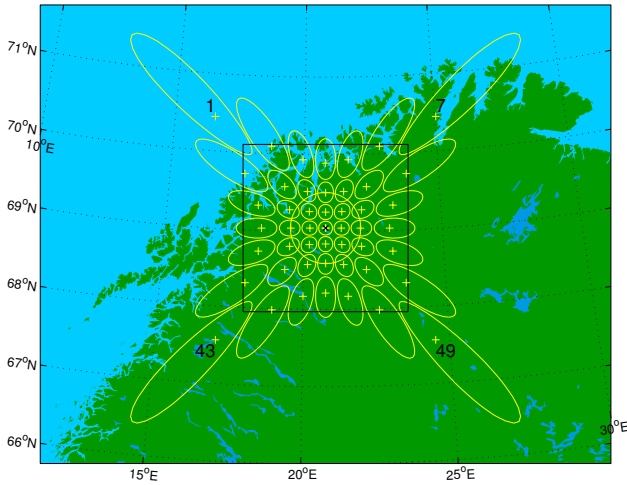


Fig. 1. Beam projection of IRIS at 90 km altitude. The contours define the -3 dB points and the black square shows the calculated field of view used in the IRIS images. The four corner beams are marked with their corresponding identification numbers, and the black cross marks the centre beam (25) which is used in this study. The large circle centred on the cross shows the contour of the co-located wide beam.

Composition Explorer) spacecraft situated at the L1 point. An upstream vantage point such as this results in early warnings of possible conditions at Earth from ten minutes to over an hour before, depending on the solar wind speed. In this study we use the in situ solar wind observations to consider the link between cosmic noise absorption (CNA) and variations in the solar wind velocity and IMF orientation. The dependence of CNA on K_p is investigated with a new data set of seven years worth of narrow beam riometer observations. An improvement over previous relationships is found, although the variation of absorption within a three-hour interval limits the use of such a relationship. As far as the authors are aware, for the first time direct satellite measurements are used to determine an empirical relationship between the absorption and solar wind velocity. There is also an unexpected general increase in CNA during southward IMF conditions.

2 Instrumentation

The Imaging Riometer for Ionospheric Studies (IRIS) at Kilpisjärvi, Finland (69.05° N, 20.79° E), began operations in September 1994, (Browne et al., 1995), based on a concept introduced by the University of Maryland (Detrick and Rosenberg, 1990) of using a single phased array to generate imaging beams. Consisting of an array of 64 dipoles, the instrument produces 49 beams at various angles to the zenith (Fig. 1), as well as a single wide beam. Beam widths in the D-layer are of the order of 20 km wide near the zenith, becoming progressively wider with decreasing elevation angle. All of the beams are sampled every second, although in the

following study the data are at averages greater than or equal to 10 min.

For this study the zenithal beam has been used to provide data; the centre of this beam lies at 66.06° magnetic latitude and 104.32° magnetic longitude (altitude adjusted corrected geomagnetic coordinate system (Baker and Wing, 1989)) in a plane at 90 km altitude. The position has been calculated for 1998 using the IGRF-2000 (International Geomagnetic Reference Field) model. Data from the zenithal beam of the imaging riometer has an advantage over wide beam riometers in that the integrated absorption is from a significantly smaller portion of the sky (compare 12.6° beam width with $>60^\circ$) and thus giving a truer measure of the vertical absorption.

Data from both the ACE (1998–2001) (McComas et al., 1998; Smith et al., 1998) and WIND (1995–1998) (Leping et al., 1995; Ogilvie et al., 1995) spacecraft have been used to provide measurements of the solar wind and interplanetary magnetic field. ACE was positioned at the first Lagrangian point (L1), whereas WIND was performing a more complicated orbit. A simple method of dividing the bowshock-spacecraft distance (in the GSM X-direction) by the solar wind velocity to determine the delay time to the ionosphere has been employed due to the large quantity of data. From the bowshock (considered to be at $15 R_E$) a further 5 min is added to account for the propagation time to the magnetopause and transmission into the magnetosphere. Occasions when high-speed streams overlap with slower solar wind have been removed from the data set rather than attempting to compute the complicated interactions.

3 Observations

IRIS data have been taken from the epoch 1995 to 2001 inclusive, providing a maximum of 2557 days with 144 data points (10-min. averages) in each. In practice data is lost due to maintenance time and hardware failures, accounting for less than 1% of the epoch. The most significant loss of data is due to contamination from solar radio emission (SRE) at 38.2 MHz; this increases the received signal in the riometer above the cosmic radio noise level. The absorption is calculated by subtracting the received power from the quiet day curve (QDC), representing the received cosmic noise power on a day when there are no contributions to absorption from particle precipitation. A percentile method (Browne et al., 1995) is used based on a minimum of 14 days of data to generate QDC for IRIS, though this has been refined to work at higher resolutions and to remove the effects of SRE from the QDC. For periods when the received power is boosted above the quiet day level negative absorption values are calculated which are unrealistic. To combat the effects of this phenomenon data have been removed when absorption is < -0.2 dB in any beam; a level of -0.2 dB is implemented to account for uncertainties in the quiet day curves.

Figure 2 displays the variation of median absorption for all magnetic local times calculated over 2000 days. The two

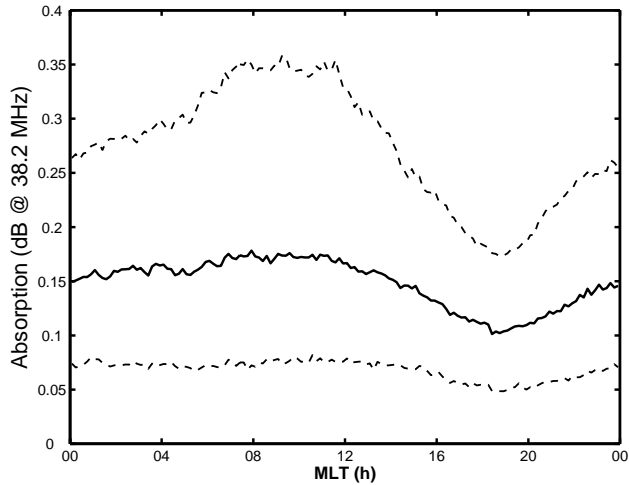


Fig. 2. Variation of median absorption in the zenithal beam of IRIS (epoch 1995–2001). Note the diurnal variation with the morning maximum followed by a minimum close to dusk. The two dashed lines indicate the upper and lower quartiles of the distributions behind each time point; the interquartile range is much larger at the maximum than the minimum.

dashed lines represent the upper and lower quartiles of the distributions. A distinct diurnal variation is immediately apparent with a peak in the pre-noon sector (09:00–10:00 MLT) and a deep minimum in the afternoon, close to dusk. The interquartile range is significantly higher at the maximum, with an increase in the upper quartile, indicative of a larger occurrence of higher absorption.

The values depicted in Fig. 2 represent the whole span of data; however, we are interested in understanding how that diurnal variation changes with geomagnetic activity. By considering the distribution of absorption at each level of K_p , information on the dependence of absorption on geomagnetic activity can be discerned. Figure 3 is composed of eight images displaying absorption against K_p for each local time interval. Occurrence is colour coded as a percentage of the total number of points in each time sector, with red being the highest (4.5%) and black indicating zero; percentages are plotted to 0.1% accuracy. The white lines show the mean of the distribution across the K_p bins in each time sector. Absorption has been sorted into 0.1 dB bins and the data are plotted from 0.1 to 2 dB, since all absorption higher than this falls well below the 0.1% occurrence level. In every case the highest percentage is at the low K_p values and close to 0 dB; negative values make up less than 4% of the total number of points at each local time. The 00:00–03:00 MLT plot indicates a tilt in the data to higher absorption at higher K_p , but the absorption is lower than 0.7 dB. By 03:00–06:00 MLT the absorption has extended to 1 dB at the top end of the K_p range, though the majority of absorption is within 0 to 0.4 dB. Absorption levels continue to increase until 09:00–12:00 MLT, when a maximum of 1.7 dB at the 0.1% level is recorded. This occurs at $K_p=5^-$, and the spread of K_p values at 0.5 dB has also in-

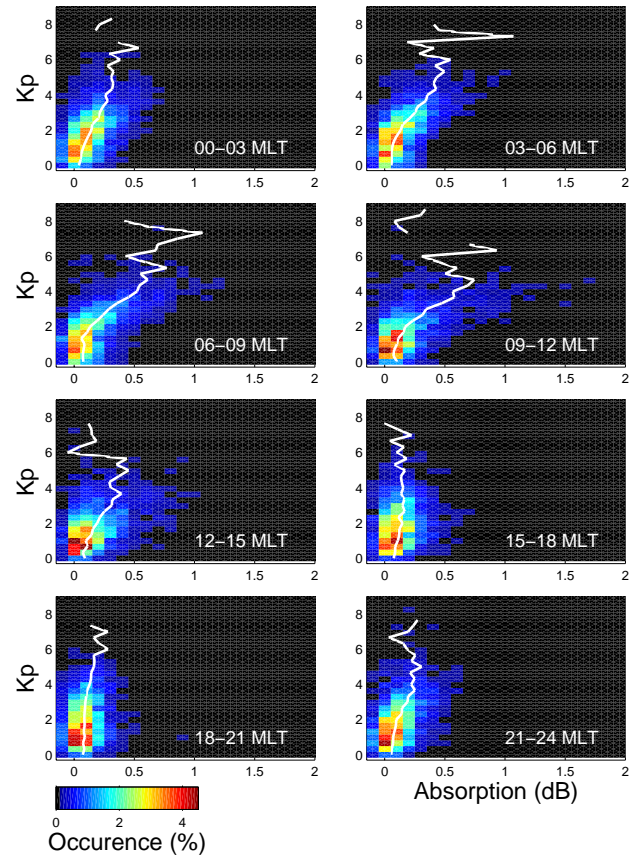


Fig. 3. Distribution of absorption with K_p in the zenithal beam, calculated for 8 magnetic local time intervals. The colour scale indicates the occurrence as a percentage, normalized for the whole time sector. The white lines represent the means of the distributions.

creased. From the 12:00–15:00 MLT time range the peak absorption begins to shrink, but at 0.5 dB there is a broad spread of K_p values represented (1^- to 6^-). At 15:00–18:00 MLT the majority of absorption is below 0.5 dB, but by 21:00–24:00 MLT there is a recovery in the expansion of the distribution. So with each successive time step from 00:00 MLT the distribution extends to increasing absorption until 09:00–12:00 MLT. After this the peak absorption recedes such that by 18:00–21:00 MLT the absorption is restricted to 0.5 dB across the range of K_p . The absorption displays the greatest dynamic range at 09:00–12:00 MLT, and is most restricted at 18:00–21:00 MLT. The plotted mean values clearly show the diurnal variation, particularly in the range $1+ < K_p < 5^-$. Above this range the number of data points drops such that the mean varies significantly with successive K_p bins instead of the smooth progression observed below $K_p=5^-$. The minimum around 15:00–18:00 MLT or 18:00–21:00 MLT is demonstrated as a vertical straight line with little increase at higher K_p .

Observations from ACE and WIND enable comparisons of cosmic noise absorption with solar wind parameters. In particular the solar wind velocity (V_{SW}) is recognised as

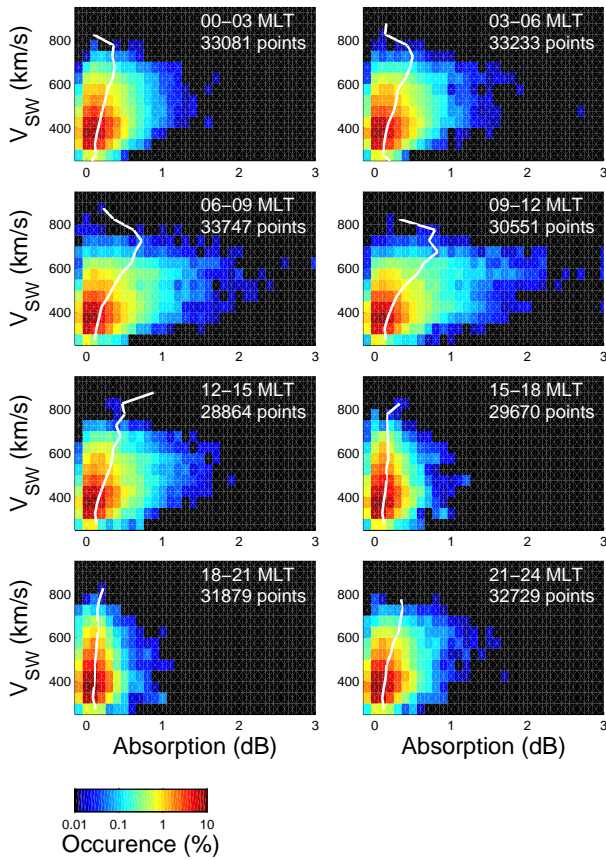


Fig. 4. Distribution of absorption in the zenithal beam with the solar wind speed, calculated for the 1995 to 2001 epoch. Note that the colour scale (occurrence) is logarithmic. The white lines are the mean values for the distributions.

an important factor in controlling geomagnetic activity (e.g. Snyder et al., 1963). Figure 4 repeats the format of Fig. 3 with the absorption binned over local time ranges (indicated on each plot with the number of data points) for solar wind speed steps of 50 km/s. The occurrence ranges from 0.01 to 10% on a logarithmic colour scale. At each time interval the highest occurrence is for low V_{SW} and CNA < 0.5 dB (down to the 1% occurrence level). With each successive time step the occurrence increases to higher values of CNA at higher V_{SW} ; for example post dawn (06:00–09:00 MLT) the CNA at the 0.03% level has surpassed 2 dB. In the next time interval the lowest plotted occurrence of CNA is > 1 dB for $V_{SW} = 300$ km/s. After midday (12:00–15:00 MLT) the absorption distribution recedes, continuing this trend into the late afternoon (16:00–18:00 MLT) where most of the absorption is confined within 1.1 dB at all solar wind speeds. Post dusk, the distribution has shrunk to the lowest level with the absorption at the lowest identifiable occurrence never exceeding the 1-dB mark. This is followed by a recovery as midnight approaches with a broader distribution at ~ 600 km/s, peaking at 1.7 dB.

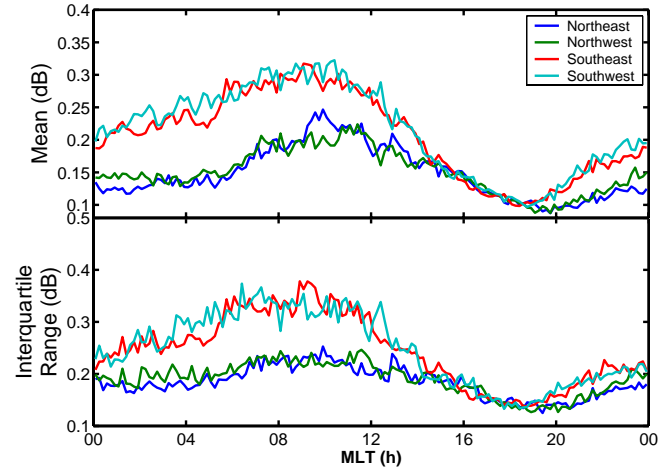


Fig. 5. Top Panel: Daily variation of mean absorption binned by IMF clock angle quadrants: North-east (blue), north-west (green), south-east (red), south-west (cyan). Bottom Panel: the inter-quartile range of the corresponding distributions.

So far the dependence of energetic particle precipitation (with auroral cosmic noise absorption acting as a proxy) on geomagnetic activity and solar wind speed has been presented. The interplanetary magnetic field also leads to changes in the geomagnetic activity and particle precipitation in the ionosphere. The absorption data for 1995 to 2001 are now sorted by IMF (B_z , B_y) clock angle quadrant; Fig. 5 (top panel) displays four absorption curves resulting from this binning, with each showing the variation of the mean absorption with magnetic local time. Those curves for northward IMF (east is blue and west is green) show very similar variations, with the familiar diurnal variation. For the western values there is a slight increase in the absorption around midnight over the eastern counterpart, leading to an apparent earlier increase in the high morning values. The usual minimum is still in the evening sector ($\approx 18:00$ to $20:00$ MLT).

For the southward-directed IMF; red and cyan indicate eastward and westward directions of the B_y component respectively. Large rises in absorption levels over the northward IMF are evident. Absorption greater than 0.2 dB begins around midnight and stretches into the morning sector, increasing to a plateau of ≈ 0.3 dB at 06:30 MLT. Following the usual rapid drop in the afternoon sector, the absorption reaches a minimum of ~ 0.1 dB in both cases at about 19:00 MLT. The bottom panel demonstrates the inter-quartile range of each of the distributions behind the four curves; these show the same general trend as the mean values and highlight that in the morning there is a greater range in the distribution than in the afternoon/evening.

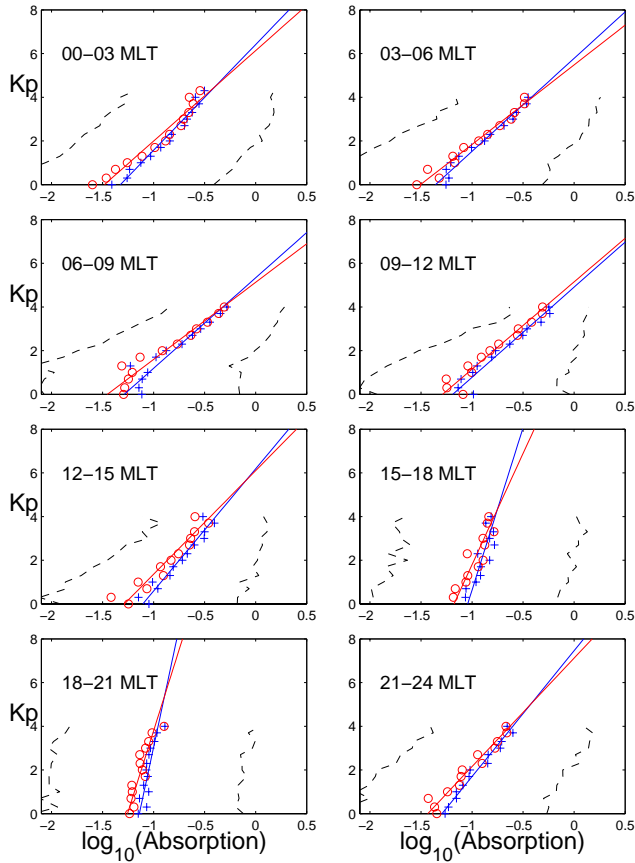


Fig. 6. Log of the mean (blue crosses) and median (red circles) values of absorption in each K_p bin plotted against the corresponding K_p . The two straight lines are linear fits to the data and the dashed black curves represent the log of ± 1 standard deviation about the mean. K_p bins that contain less than 50 data points have been excluded from contributing to the curve fitting.

4 Discussion

4.1 Diurnal variation

The local time dependence of absorption is a well-known phenomenon (e.g. Hartz et al., 1963). Previous studies found that the strongest absorption occurs in the morning sector extending back towards midnight and slightly beyond. Investigations by Driatsky (1966) and Hargreaves and Cowley (1967) demonstrated that the absorption close to midnight showed a peak rather than the smooth decay into the evening sector indicated by other studies. The relative size and appearance of the maxima (pre-noon and pre-midnight) depends on the method by which the statistics are compiled (Hargreaves, 1969). Absorption in the pre-midnight sector is attributed to the precipitation of electrons directly associated with substorm activity (e.g. Ansari, 1964; Ranta et al., 1981), and the precipitation in the morning sector has often been associated with the eastward drift of electrons (Kavanagh et al., 2002 and references therein) following substorm injection. Thus, it is the absorption around midnight that is considered

Table 1. Gradient (S) and intercept (I) values for the fits to Eq. (1) for both mean and median absorption for data in Fig. 6.

MLT (hours)	Mean		Median	
	S	I	S	I
00:00–03:00	0.201	−1.325	0.245	−1.481
03:00–06:00	0.235	−1.358	0.275	−1.505
06:00–09:00	0.240	−1.286	0.277	−1.445
09:00–12:00	0.242	−1.189	0.250	−1.289
12:00–15:00	0.179	−1.106	0.211	−1.286
15:00–18:00	0.067	−1.042	0.098	−1.177
18:00–21:00	0.046	−1.140	0.067	−1.255
21:00–24:00	0.169	−1.289	0.197	−1.428

to be of premier geophysical importance, however, for practical purposes (e.g. HF communication circuits) the morning values are also of interest. Since the current study uses 10-min resolution data to determine the mean values at each magnetic local time, it is less sensitive to the short duration ($\approx 1\text{--}5$ min) spikes, thus de-emphasizing the midnight peak. Figure 2 clearly demonstrates the diurnal variation observed in the central beam of IRIS; a strong morning peak following a smooth rise from the pre-midnight sector. Gross features in the distributions should correlate well between individual studies, however, any comparisons between the different statistical studies must take into account the method by which the data were collected.

4.2 Geomagnetic control

Magnetospheric influence on auroral absorption was established in the early days of riometry (e.g. Parthasarathy and Reid, 1967). Figure 3 shows how with increasing MLT the distribution spreads to higher absorption values at lower K_p until the afternoon when a recovery occurs. A relationship linking geomagnetic activity with absorption for a given local time and latitude is desirable for prediction purposes. Past authors have attempted to predict auroral radio absorption based upon statistical measurements (e.g. Agy, 1972; Herman and Vargas-Villa, 1972; Foppiano, 1975; Vondrak et al., 1978 and Foppiano and Bradley, 1984), including terms based upon sunspot number, linking the absorption to the solar activity cycle. Hargreaves (1966) determined relationships between the absorption and the K_p and A_p indices, and later works (Hargreaves et al., 1985, 1987) confirmed this reliance on geomagnetic activity, suggesting that a geomagnetic term should replace the sunspot dependence in any prediction model.

The investigation by Hargreaves suggested a linear relationship between the log of the median auroral absorption and K_p that was dependent on the time of day:

$$\log_{10} A_m = I + S \cdot K_p \quad (1)$$

Hargreaves used data from three riometers in the Northern Hemisphere: Great Whale River (55.03° , -77.83°

geographic), Baie St. Paul (47.37°, -70.55°) and Frobisher Bay (63.80°, -68.70°) operating at 29.85 MHz. The two lower latitude stations are separated by 38 min of magnetic local time (Baie St. Paul leads Great Whale River), and the data were binned into four ranges of universal time with values of the slope and intercept computed.

For this study magnetic local time (MLT) bins have been used rather than UT. This makes future comparisons with data from other stations at different locations much simpler, and since absorption is related to substorm activity MLT dependence is more likely than UT dependence. As shown in Fig. 3 eight bands of magnetic local time have been chosen to bin the data, corresponding to those intervals over which K_p is calculated. This demonstrated that there is a changing distribution in the absorption at different levels of K_p in each magnetic local time, with the scatter of absorption occupying different ranges. Higher absorption is more likely at some magnetic local times for a given K_p than at other intervals. Figure 6 plots the logarithm of the median and mean absorption values for each K_p level for each MLT interval. The two colour-coded lines display linear fits to the data for the mean (blue) and median (red) values, and the corresponding coefficients are presented in Table 1. For K_p levels when less than 50 data points occur in each local time bin, the mean and median values are excluded from the fit. On either side of the mean values, the two dashed black lines show the positions of one standard deviation from the mean value; these give an indication of the spread of the data in each of the bins. The differences between the curves in successive time bins suggest that the local time dependence is very significant and so using large temporal ranges (e.g. 6 h) is inadvisable. When compared with the results of the investigation by Hargreaves (1966) the gradients of the fit appear reasonable (see Table 2). IRIS is positioned at a latitude between two of the riometers used in the previous study, tending towards the north end of the separation and the gradients (when combined over 6 h) tend towards the northernmost values. Interestingly, the point where the values are markedly different is when the riometers pass through the minimum in the diurnal variation. The earlier study used a time bin (18:00–24:00 UT) that spans the rapid decline to, and slow rise from, the minimum (13:00–19:00 MLT). By weighting the latter half of the time period more than the former, in combining the three-hour bins of the present study, the gradients come into agreement. The dominance of the minimum is unsurprising considering the small effect that geomagnetic activity has on this recurring phenomenon, and it is a clear example of how careful selection of temporal bins is essential to avoid smearing across very different characteristics.

In order to test the accuracy of the fit the empirical equations for the eight time sectors are applied to the K_p data from 1995 to 2001. Correlation coefficients are determined for the observed and estimated absorption for both the mean ($r=0.39$) and median ($r=0.36$) cases, and the residuals are also computed. The means of the residuals are both close to zero, with the median absorption lying closer (-0.002 dB) than the mean (-0.017 dB). However, the standard deviation

of the residuals in both cases demonstrate a wide variability between the observed and calculated CNA (0.238 dB (mean) and 0.263 dB (median)). At times the estimated absorption is >1.7 times the observed value; for an observation of 0.5 dB this produces an error of 0.3 dB at 38.2 MHz. For lower frequencies the error becomes much greater (absorption is approximately inversely proportional to the square of the observing frequency). Restricting the comparison to those data that contribute to determining the empirical equations further tests the correlation. For the range of data represented by the well-defined mean and median values (>50 points in each bin), the correlation is much improved and the spread of the residuals reduces (s.d. ≈ 0.16 in both cases), suggesting a better representation. The correlation coefficient is still only 0.53, and more observations during periods of high activity should lead to a better fit of the data; however, it should be considered that the variability of absorption in the K_p bins suggests that the statistical mean and median are poor predictors of auroral absorption. The dynamic range of the absorption distribution with K_p that is demonstrated in Fig. 3 has already been mentioned, and this can be seen in the plots of Fig. 6 as well. To address the uncertainty associated with the logarithmic relationship of the absorption, a different empirical relationship is now suggested; a quadratic is fitted to the K_p :

$$A_m = aK_p^2 + bK_p + c, \quad (2)$$

where a , b and c are constants listed in Table 3 for both the mean and median absorption. Figure 7 displays the local time results of this fit to the data with good results over the range of available data. The black dashed lines are the ± 1 standard deviation from the mean for each K_p bin. 15:00–18:00 MLT is at the minimum in the diurnal variation, and the range of absorption values hardly increases as the activity level rises where the distribution of points suggests a linear fit (e.g. $A=bK_p+c$) that would be more appropriate than the quadratic, and this has been implemented. When a quadratic form is used in this time sector it results in an unphysical variation with rapidly decreasing absorption above $K_p=3$. Neither the linear nor the squared term dominate to a significant degree in each of the other time ranges, except in the 00:00–03:00 MLT and 12:00–15:00 MLT sectors. At these times it is clear that the relationship is mostly linear with a small nonlinear contribution at high K_p . Once again, the fit will be improved when more data at the highest and lowest K_p values become available.

Testing the relationship in the same manner as for the previous example results in a notably higher correlation between the observed and the calculated data ($r=0.51$). Also, the standard deviation of the residuals decreases (s.d. 0.18 dB). Restricting the comparisons to the data that contribute to the fit leads to a slight improvement ($r=0.54$, s.d. ≈ 0.16 dB). Thus, the logarithmic fit seems to represent the absorption that contributes to the fit almost as well as the quadratic fit, although we can speculate that the quadratic may be closer to the true relationship as it has more success in calculating the CNA beyond the range of fitting.

Table 2. Comparing the results of fitting Eq. (1) to the absorption data. The asterisk (*) indicates results from Hargreaves (1966), note that the two riometers in that study were positioned ≈ 38 min apart in MLT. The values in the two columns under IRIS represent the coefficient S , from Eq. (1) and Table 1, for the two MLT intervals that best overlap the corresponding periods from the previous study.

Station and Latitude (aacgm)	Great Whale river (67.8° Mlat)*	Baie St. Paul (60.0° Mlat)*	IRIS (65.9° Mlat)	
00:00–06:00 UT	0.113	0.284	0.067	0.197
06:00–12:00 UT	0.216	0.338	0.245	0.275
12:00–18:00 UT	0.284	0.061	0.277	0.250
18:00–24:00 UT	0.080	0.096	0.211	0.098

Table 3. Coefficients for the quadratic fit of K_p to the absorption values in 8 magnetic local times ranges (from Eq. 2). * indicates where a linear fit has been applied to the data; this is due to the unphysical nature of the quadratic fit in that time sector (see text).

MLT	Mean			Median		
	a	b	c	a	b	c
00:00–03:00	0.005	0.044	0.033	0.002	0.053	0.013
03:00–06:00	0.021	−0.001	0.050	0.017	0.011	0.030
06:00–09:00	0.035	−0.035	0.075	0.032	−0.022	0.047
09:00–12:00	0.040	−0.028	0.086	0.035	−0.026	0.070
12:00–15:00	0.005	0.055	0.064	0.004	0.051	0.037
15:00–18:00	0*	0.002	0.089	0*	0.024	0.061
18:00–21:00	0.004	−0.005	0.080	0.004	−0.004	0.062
21:00–24:00	0.007	0.019	0.049	0.009	0.012	0.037

Figure 3 demonstrated that the absorption has a wide distribution in each K_p bin, but the occurrence is much higher towards the lower end of the absorption scale. This does not exclude high absorption events by any means, but even with high values of K_p there will be many occasions when absorption is low; similar geomagnetic conditions will not necessarily return similar absorption levels. When the nature of auroral absorption is considered this becomes less surprising; radio absorption at high latitudes is principally due to the precipitation of energetic particles (electrons of energy > 15 keV), and if no such particle population exists on the appropriate magnetic field lines, then no absorption will be observed. Thus, for periods of high geomagnetic activity in close succession the high-energy particle population may be depleted for a time, leading to a significantly reduced absorption level. Alternatively, a lack of absorption may be a local effect due to an equatorward displacement of the absorption oval as a consequence of an expanded polar cap. In order to make reliable absorption predictions, some term dependent on the recent time history of the magnetic activity must be included in any empirical relationship. This is not included within this paper and instead will be the subject of a future study.

Another important point to note is the variability of absorption on small time scales, especially in the night side

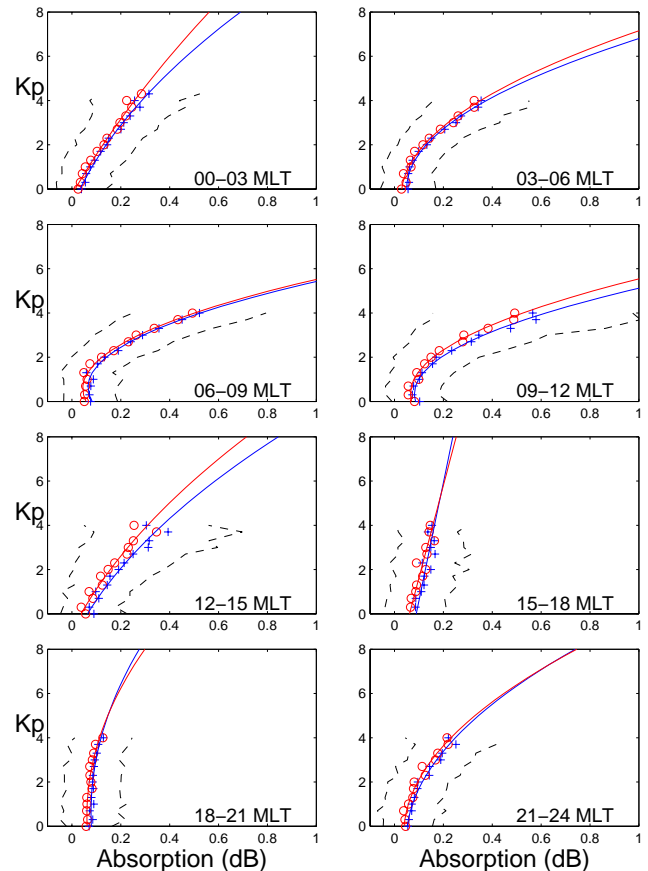


Fig. 7. Local time plots of the median (red circles) and mean (blue crosses) absorption against the K_p . The curves represent quadratic fits to the data points and the black dashed lines are ± 1 standard deviations about the mean values. K_p bins that contain less than 50 data points have been excluded from contributing to the curve fitting.

ionosphere; using K_p (a three hour index) as an indicator of the absorption activity does not truly capture the dynamic nature of auroral absorption. A better index might be AE , which is particularly pertinent to the substorm activity that leads to auroral absorption. Unfortunately, the available AE data covers a smaller time span than the K_p , extending from 1997 to 2000 inclusive and these are only quick look data,

Table 4. Coefficients for the linear fit of the solar wind velocity to absorption values in 8 magnetic local times ranges (from Eq. 3).

MLT (hours)	Mean		Median	
	a	b	a	b
00:00–03:00	0.00062	−0.0764	0.00049	−0.06397
03:00–06:00	0.00091	−0.17799	0.00073	−0.15330
06:00–09:00	0.00132	0.30325	0.00109	−0.28995
09:00–12:00	0.00163	−0.40347	0.00139	−0.39462
12:00–15:00	0.00075	−0.10797	0.00060	−0.10422
15:00–18:00	0.00015	0.07162	0.00017	0.03702
18:00–21:00	0.00012	0.00639	0.00011	0.04525
21:00–24:00	0.00062	−0.10117	0.00044	−0.06141

unconfirmed and derived from only 8 of the 12 stations; therefore no fit has been undertaken at this time. Once the data have been confirmed and a longer period is available, *AE* should prove suitable for attempting a similar process described above for K_p .

4.3 Solar wind contributions

Tsurutani et al. (2001) noted that long after the passage of interplanetary shocks in two separate events, there was an appreciable aurora at dawn, dusk and midnight, recorded by the Ultra Violet Imager carried by the Polar spacecraft. This was attributed to a viscous interaction between the solar wind and the flanks of the magnetosphere, producing either a Kelvin Helmholtz instability (Rostoker et al., 1992) or cross-field diffusion of magnetosheath plasma via ELF/VLF boundary layer wave interactions (Lakhina et al., 2000; Tsurutani and Lakhina, 1997). Either way, small changes in the dynamic pressure, brought about through slight variations in the solar wind speed, could result in increased precipitation; this is demonstrated in Fig. 4, where the increased level of solar wind velocity produces large changes in the mean absorption in the morning and midnight sectors, though the majority of absorption clusters about 0.1 dB. Once again, there is a strong minimum of the mean CNA in the afternoon/evening sector (15:00–21:00 MLT), and it is unaffected by the increasing solar wind velocity. At high V_{sw} the distribution appears to narrow again, but this is an artifact created by low numbers of data points at the greater speeds. Since the solar wind is credited as being the driving force behind geomagnetic activity, it seems reasonable to link the absorption to the energy input from the solar wind. The study by Hargreaves (1966) attempted to estimate the total energy of precipitated particles. This relied on the empirical relationship derived by Hargreaves and Sharp (1965), linking the absorption to the square root of the total energy of the precipitated electrons, combined with an expression for the solar wind velocity based on K_p and A_p . Measurements of the solar wind were made by the Mariner 2 space probe to derive this relationship (Snyder et al., 1963). With the data available

from the ACE and WIND spacecraft it is possible to attempt to link auroral absorption directly with the solar wind velocity. By compiling mean and median absorption values from 50 km/s wide bins, a similar method to the previously implemented procedure can be applied to the data. Figure 8 shows the results of the binning with a linear fit to the data of the form:

$$A_m = aV_{sw} + b \quad (3)$$

Values for the coefficients a and b are presented in Table 4. The data distribution in the pre-noon sector shows some non-linearity, but this is not repeated to any notable effect in the other local time bins and does not compare with that recorded for the K_p bins. The correlation coefficients ($r=0.48$) suggest a better result than for the original K_p fit, and the standard deviation of the residuals (0.19 dB) is comparable with those of the quadratic relationship in K_p . When the relationship is computed for only those velocities where more than 50 data points are used to calculate mean and median values, there is no discernable difference in the correlation. The current Eq. (3) will produce unrealistic values for low solar wind velocities (<200 km/s) in most cases; however, in the previous half solar cycle there have been no occurrences of the solar wind dropping below ≈ 250 km/s. Values of absorption calculated for a solar wind velocity less than 250 km/s should be discounted as extremely unreliable as should values in excess of 800 km/s. It is highly likely that at large velocity, other mechanisms of absorption, such as the sudden commencement absorption (SCA) and sudden impulse absorption (SIA) (Brown et al., 1961; Brown and Driatsky, 1973), will dominate.

By fitting a quadratic equation as with the K_p the correlation changes by only a small amount, and similar results are obtained from comparing the logarithm of the speed and the absorption (e.g. $r=0.49$). Thus, the simple linear fit to the solar wind data seems to be the best that can be achieved but results in a relatively weak correlation. It is believed that the important factor that is necessary to improve upon these results is to combine the effects of the IMF (discussed below) with that of the solar wind and to include some term that takes account the recent time history of the solar wind/IMF. This “priming” factor would be related to the storing of energy in the magnetotail prior to release during substorm onset. Much further work is needed before a reliable prediction model for auroral absorption can be created based on a solar wind parameter, though existing absorption models (e.g. Foppiano and Bradley, 1983; Greenberg and La Belle, 2002) have changed from using a solar cycle related term (usually sunspot number) to a geomagnetic dependent value.

4.4 IMF contributions

Another factor is the role played by the IMF. Figure 5 showed that a southward IMF affects the absorption, which is unsurprising given that this has a general effect on the geomagnetic activity. A southward IMF leads to absorption increases in the morning and midnight, sectors whereas it once again

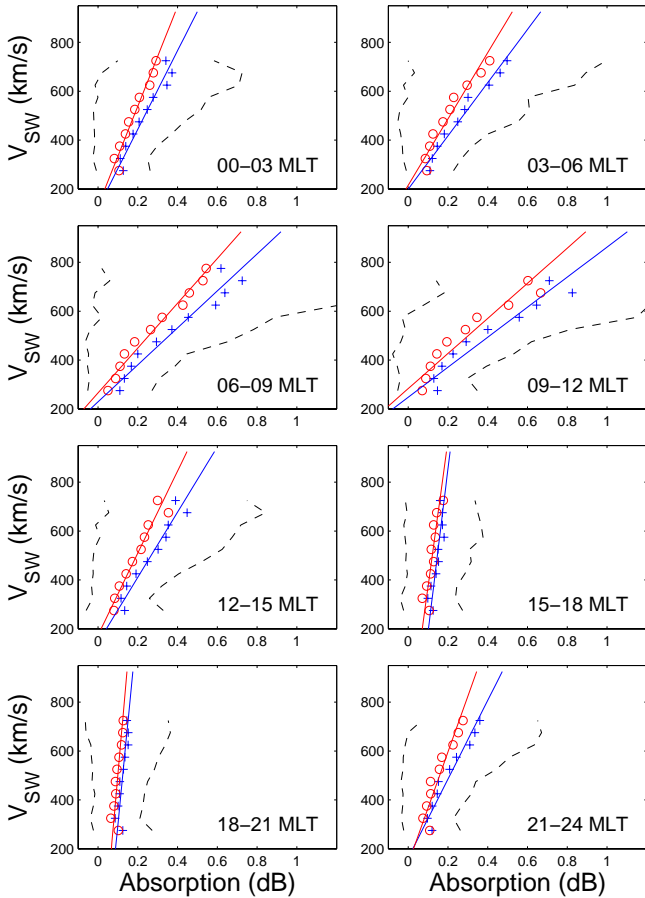


Fig. 8. Absorption versus solar wind velocity for 8 magnetic local time ranges. Mean and median values are calculated for each 50 km/s bin and straight line fits derived. The black dashed lines represent ± 1 standard deviation about the mean values. Solar wind bins that contain less than 50 data points have been excluded from contributing to the curve fitting.

remains very low in the evening sector. A westward IMF appears to favour an increase in absorption over midnight and into the morning sector, perhaps due to the skewing of the field lines (Cowley et al., 1991), leading particles to precipitate at an earlier local time. To determine whether this is significant on a statistical level the data are subjected to the Kolmogorov-Smirnov significance test (Von Mises, 1964), which tests the hypothesis that two samples are drawn from the same distribution. A significance probability, SP, < 0.01 suggests that the samples come from significantly different distributions. For positive B_y , north and southward IMF have been compared. The results show a SP < 0.01 from 20:00 to 12:00 MLT, suggesting that the data in this band are from very different distributions. Midnight and morning absorption is highly dependent on the IMF, and the low absorption values in the afternoon/evening are not; this reinforces the observations that the minimum does not change with either K_p or V_{sw} . Comparing east and west IMF (for southward B_z) we find SP > 0.01 for virtually all of the day, such that no significant conclusion can be drawn about the possibil-

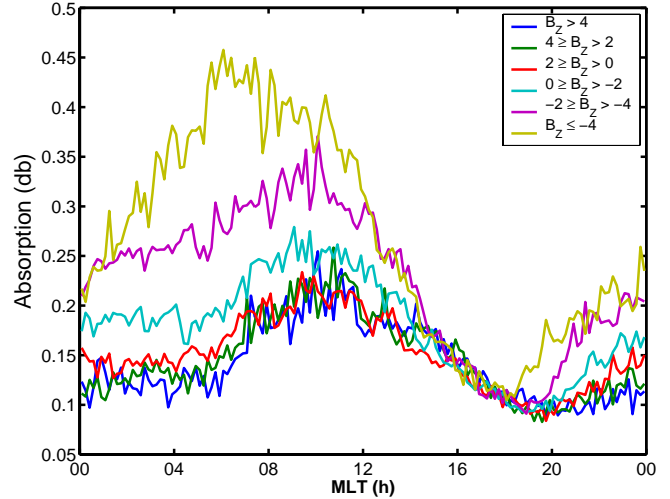


Fig. 9. Ten-min averaged absorption binned by IMF B_z . A northward IMF does not affect the absorption, whereas increasingly negative B_z increases the level of absorption during the night and morning sectors.

ity of B_y having an effect on the absorption. Discarding the B_y parameter as insignificant for these purposes, the zenithal absorption can be binned by B_z , in order to further investigate the dependence. Figure 9 shows that when the mean absorption is binned by B_z there is a definite effect for negative values, both around midnight and in the morning sector. Once again the field strength does not affect the level of the minimum. In addition a northward IMF does not seem to radically affect the absorption as southward does; the curves for positive B_z cluster below a 0.25 dB maximum, with little difference between each range. Those curves for $B_z < 0$ display a definite trend with increasingly higher values of absorption for successively negative values of B_z . Thus, the absorption distribution is obviously dependent on the Z component of the IMF, just as should be expected, since absorption is substorm dependant. This approach does not account for transient effects in the absorption, such as those reported by Nishino et al. (1999) for a rectified response to north/south turnings in the IMF. That example was related to increases in field-aligned currents close to the open/closed field line boundary, whereas the general increase here is likely related to the occurrence of substorm activity for negative IMF.

An inspection of the IMF B_z versus the solar wind speed (data not shown) shows no bias in the data, so high velocities occur for both positive and negative B_z . It should be possible to develop a relationship for the dependence of absorption on the IMF that could further be improved by separating the effects of the solar wind speed. This would go a long way to establishing a more accurate model for predicting auroral absorption and will be the subject of a future study.

4.5 The diurnal minimum

A recurring and intriguing phenomenon in the statistical auroral absorption is the presence of the diurnal minimum.

Figure 2 demonstrated the large decrease in absorption at around 18:00 MLT. Similarly, when the data are binned by K_p the minimum is recurring, always reaching down to ~ 0.15 dB. In fact, this occurs for every level of solar wind speed (e.g. Fig. 4) and also the for IMF (Fig. 5). There is no significant difference between the distributions at the minimum when comparing north and south-directed IMF; quite obviously, the minimum is unaffected by geomagnetic, solar wind or IMF activity. The exact mechanics behind the diurnal minimum are beyond the scope of this study; suffice to say that the minimum is a recurring statistical phenomenon that is likely related to a combination of the loss of drifting electrons (through earlier precipitation and radial diffusion) and the remaining population becoming stably trapped in the magnetosphere. For this study it is only necessary to acknowledge the existence of the minimum as a limiting case on the local time dependence of the relationship between absorption and K_p and the solar wind velocity.

5 Conclusions

Data have been combined from 7 years of continuous observations of the auroral absorption from a single imaging riometer (IRIS) using the narrow zenithal beam to investigate the dependence of absorption on geomagnetic and solar wind parameters. 1995 to 2001 covers the ascending phase of solar cycle 23. The narrow beam offers a better estimate of the height-integrated absorption over broad beam riometer observations, since it integrates over a smaller portion of the sky. Through the sorting of absorption into bins of corresponding K_p a quadratic empirical relationship between the two parameters is derived and provides a better correlation of calculated and observed absorption than the linear fit based on the logarithm of the absorption. The local time dependence of absorption is so clear that the possibility that different types of fits to the data in each MLT bracket should not be discounted. Any future investigation of this nature should take this into account.

For the first time a linear relationship between the solar wind velocity and the auroral absorption has been derived. This is based upon direct solar wind observations rather than estimates based on the K_p index. Combining the observations results in a reasonable correlation; however, it is clear that some other factor must play a role in the relationship. It appears that a southward-orientated IMF plays a significant role in precipitation in the auroral zone, but the eastward component does not have a statistical effect on the mean absorption. Deriving a relationship between B_z and absorption after the effects of the solar wind speed have been removed will be the focus of a future study.

The afternoon/evening minimum in the diurnal variation of absorption appears to be a strongly consistent phenomenon. Absorption virtually disappears around 18:00 MLT regardless of the geomagnetic, solar wind or IMF activity. This is likely related to the loss of the bulk of drifting particles. The remaining flux of electrons is probably lower

than the critical flux necessary for whistler-mode instability that drives enhanced precipitation in the dayside magnetosphere (Kennel and Petschek, 1966; Coroniti and Kennel, 1970). The mechanisms of this effect are beyond the scope of the current study, and for the purposes of prediction it is only necessary to acknowledge the fact that the minimum occurs.

Although apparently reasonable fits to the mean and median absorption can be found for both K_p and the solar wind speed, the variability of the absorption still leads to problems. Low absorption is still likely even when geophysical activity is high, since absorption is highly dependent on the population of energetic particles in the magnetosphere; without fluxes of electrons (energies > 15 keV) no appreciable absorption is possible. Thus current, global models of absorption based on only K_p values are somewhat unreliable. Methods to improve such a model must take into account past levels of geomagnetic activity, absorption and some other measure of the energy stored in the magnetotail (e.g. B_z). A detailed study of how absorption responds during geomagnetic storms would be especially useful, linking the observations to past levels of activity, as indicated not only by K_p and D_{st} but also by the IMF and solar wind speed. If this is done then with the large array of riometers available in both hemispheres and the catalogue of data, a suitable global empirical prediction model could be defined.

Acknowledgements. The Imaging Riometer for Ionospheric Studies (IRIS) is operated by the Department of Communications Systems at Lancaster University (UK), funded as a UK National Facility by the Particle Physics and Astronomy Research Council (PPARC) in collaboration with the Sodankylä Geophysical Observatory. R. Leping and K. Ogilvie at NASA/GSFC provided wind data through CDAWeb. We thank the ACE SWEPAM and MAG instrument teams and the ACE Science Center for providing the ACE Level 2 data. AJK is indebted to both PPARC and the Rutherford Appleton Laboratories for a CASE research studentship during which the bulk of this work was completed at Lancaster University. AS is supported on a PPARC research studentship at Lancaster University and EEW was funded by a PPARC research studentship at the University of Leicester. We gratefully acknowledge Dr. Gang Lu for reviewing this manuscript at HAO before submission and for her subsequent comments.

The Editor in Chief thanks T. Yeoman for his help in evaluation this paper.

References

- Agy, V.: A model for the study and prediction of auroral effects on HF radar, Proc. AGARD conference "Radars propagation in the Arctic, AGARD-CP-97, 32-1, 1972.
- Ansari, Z. A.: The aurorally associated absorption of cosmic noise at College Alaska, *J. Geophys. Res.*, 69, 4493–4513, 1964.
- Baker, K. B. and Wing, S.: A new magnetic coordinate system for conjugate studies at high latitudes, *J. Geophys. Res.*, 94, 9139–9143, 1989.
- Brown, R. R. and Driatsky, V. M.: Further Studies of Ionospheric and Geomagnetic Effects of Sudden Impulses, *Planet. Space Sci.*, 21, 1931–1935, 1973.

- Brown, R. R., Hartz, T. R., Landmark, B., Leinbach, H., and Ortner, J.: Large-Scale Electron Bombardment of the Atmosphere at the Sudden Commencement of a Geomagnetic Storm, *J. Geophys. Res.*, 66, 1035–1041, 1961.
- Browne, S., Hargreaves, J. K., and Honary, B.: An Imaging Riometer for Ionospheric Studies, *Elect. Comm. Eng. J.*, 7, 209–217, 1995.
- Coroniti, F. V. and Kennel, C. F.: Electron Precipitation Pulsations, *J. Geophys. Res.* 75, 1279–1289, 1970.
- Cowley, S. W. H., Morelli, J. P., and Lockwood, M.: Dependence of convective flows and particle precipitation in the high latitude ionosphere on the X and Z-components of the interplanetary magnetic field, *J. Geophys. Res.*, 96, 5557–5564, 1991.
- Detrick, D. L. and Rosenberg, T. J.: A Phased-Array Radiowave Imager for Studies of Cosmic Noise Absorption, *Radio Science*, 25, 325–338, 1990.
- Driatsky, V. M.: Study of the space and time distribution of auroral absorption according to observations of the riometer network in the arctic, *Geomagnetism and Aeronomy*, 6, 828–834, 1966.
- Foppiano, A. J.: A new method for predicting the auroral absorption of HF sky waves, CCIR Interim Working Party 6/1. Docs. 3 and 10, International Telecommunication Union, 1975.
- Foppiano, A. J. and Bradley, P. A.: Prediction of auroral absorption of high-frequency waves at oblique incidence, *Telecommun. J.*, 50, 547–560, 1983.
- Foppiano, A. J. and Bradley, P. A.: Day to day variability of riometer absorption, *J. Atmos. Terr. Phys.*, 46, 689–696, 1984.
- Foppiano, A. J. and Bradley P. A.: Morphology of background auroral absorption, *J. Atmos. Terr. Phys.* 47, 663–674, 1985.
- Greenberg, E. M. and LaBelle, J.: Measurement and modeling of auroral absorption of HF radio waves using a single receiver, *Radio Sci.*, 37, 6, 1–12, 2002.
- Hargreaves, J. K.: On the variation of auroral radio absorption with geomagnetic activity, *Planet. Space. Sci.* 14, 991–1006, 1966.
- Hargreaves, J. K.: Auroral Absorption of HF Radio Waves in the Ionosphere: A Review of Results from the First Decade of Riometry, *Proceedings of the IEEE*, 57, 1348–1373, 1969.
- Hargreaves, J. K. and Cowley, F. C.: Studies of Auroral Absorption Events at Three Magnetic Latitudes – I. Occurrence and Statistical Properties of the Events, *Planet. Space Sci.*, 1571–1583, 1967.
- Hargreaves, J. K. and Sharp, R. D.: Electron Precipitation and Ionospheric Radio Absorption in the Auroral zones, *Planet. Space. Sci.*, 13, 1171–1183, 1965.
- Hargreaves, J. K., Feeney, M. T. and Burns, C. J.: Statistics of auroral radio absorption in relation to prediction models, Proc. 36th symposium of the electromagnetic wave propagation panel, AGARDS-CP-382, 1–10, 1985.
- Hargreaves, J. K., Feeney, M. T., Ranta, H., and Ranta, A.: On the prediction of auroral radio absorption on the equatorial side of the absorption zone, *J. Atmos. Terr. Phys.*, 49, 259–272, 1987.
- Hartz, T. R., Montbriand, L. E., and Vogan, E. L.: A study of auroral absorption at 30 Mc/s, *Can. J. Phys.*, 41, 581–595, 1963.
- Herman, J. R. and Vargas-Villa, R.: Investigation of auroral ionospheric and propagation phenomena related to the Polar Fox II experiment, Analytical Systems Corporation, Report ASCR-72-62, 1972.
- Holt, O., Landmark, B., and Lied, F.: Analysis of riometer observations obtained during polar radio blackouts, *J. Atmos. Terr. Phys.*, 23, 229–248, 1961.
- Kavanagh, A. J., Honary, F., McCrea, I. W., Donovan, E., Woodfield, E. E., Manninen, J., and Anderson, P. C.: Substorm related changes in precipitation in the dayside auroral zone - a multi instrument case study, *Ann. Geophys.*, 20, 1321–1334, 2002.
- Kennel, C. F. and Petschek, H. E.: Limit on stably trapped particle fluxes, *J. Geophys. Res.*, 71, 1–28, 1966.
- Lakhina, G. S., Tsurutani, B. T., Kojima, H., and Matsumoto, H.: “Broadband” plasma waves in the boundary layers, *J. Geophys. Res.*, 105, 27 791–27 831, 2000.
- Lepping, R. P., Acuna, A. H., Burlaga, L. F., Farrell, W. M., Slavin, J. A., Schatter, K. H., Mariani, F., Ness, N. F., Neubauer, F. M., Whang, Y. C., Byrnes, J. B., Kennon, R. S., Panetta, P. V., Scheifele, J. and Worler, E. M.: The WIND magnetic field investigation, *Space Sci. Rev.*, 71, 207–229, 1995.
- McComas, D. J., Bame, S. J., Barker, P., Feldman, W. C., Phillips, J. L., Riley, P., and Griffee, J. W.: Solar Wind Electron Proton Alpha Monitor (SWEPAM) for the Advanced Composition Explorer, *Space Sci. Rev.*, 86, 563–612, 1998.
- Nishino, M., Nishitani, N., Sato, N., Yamagishi, H., Lester, M., and Holtet, J. A.: A rectified response of daytime radio wave absorption to southward and northward excursions during northward interplanetary magnetic field: A case study, *Adv. Polar Upper Atmos. Res.*, 13, 139–153, 1999.
- Ogilvie, K. W., Chornay, D. J., Fritzenreiter, R. J., Hunsaker, F., Keller, J., Lobell, J., Miller, G., Scudder, J. D., Sittler, Jr., E. C., Torbert, R. B., Bodet, D., Needell, G., Lazarus, A. J., Steinberg, J. T., Tappan, J. H., Mavretic, A., and Gergin, E.: SWE, A comprehensive plasma instrument for the WIND spacecraft, *Space Sci. Rev.* 71, 55–77, 1995.
- Parthasarathy, R. and Reid, G. C.: Magnetospheric Activity and its consequences in the auroral zone, *Planet. Space Sci.*, 15, 917–929, 1967.
- Ranta, H., Ranta, A., Collis, P. N., and Hargreaves, J. K.: Development of the Auroral Absorption Substorm: Studies of Pre-onset Phase and Sharp Onset Using an Extensive Riometer Network, *Planet. Space Sci.*, 1287–1313, 1981.
- Rostocker, G., Jackel, B., and Arnoldy, R. L.: The relationship of periodic structure in auroral luminosity in the afternoon sector of ULF pulsations, *Geophys. Res. Lett.*, 19, 613–616, 1992.
- Smith, C. W., L’Hereux, J., Ness, N. F., Acuna, M. H., Burlaga, L. F., and Schiefle, J.: The ACE Magnetic Fields Experiment, *Space Sci. Rev.*, 86, 613–632, 1998.
- Snyder, C. W., Neugebauer, M., and Rae, U. R.: The Solar Wind Velocity and Its Correlation with Cosmic ray Variations and with Solar and geomagnetic activity, *J. Geophys. Res.*, 68, 6361–6370, 1963.
- Tsurutani, B. T. and Lakhina, G. S.: Some basic concepts of wave-particle interactions in collisionless plasmas, *Rev. Geophys.*, 35, 491–501, 1997.
- Tsurutani, B. T., Zhou, X. Y., Arballo, J. K., Gonzalez, W. D., Lakhina, G. S., Vasyliunas, V., Pickett, J. S., Araki, T., Yang, H., Rostocker, G., Hughes, T. J., Lepping, R. P., and Berdichevsky, D.: Auroral zone dayside precipitation during magnetic storm initial phases, *J. Atmos. Sol. Terr. Phys.*, 63, 513–522, 2001.
- Vondrak, R. R., Smith, G., Hatfield, V. E., Tsunoda, R. T., Frank, V. R., and Perreault, P. D.: Chantika model of the high-latitude ionosphere for application to HF propagation prediction. Rome Air Development Center Technical Report, RADC-TR-78-7, 1978.
- Von Mises, R: *Mathematical Theory of Probability and Statistics*, Chapters IX and IX, New York: Academic Press, 1964.