



HAL
open science

Probing discrete auroral arcs by ionospheric tomography

J. Moen, S. T. Berry, L. Kersley, B. Lybekk

► **To cite this version:**

J. Moen, S. T. Berry, L. Kersley, B. Lybekk. Probing discrete auroral arcs by ionospheric tomography. *Annales Geophysicae*, 1998, 16 (5), pp.574-582. hal-00316391

HAL Id: hal-00316391

<https://hal.science/hal-00316391>

Submitted on 18 Jun 2008

HAL is a multi-disciplinary open access archive for the deposit and dissemination of scientific research documents, whether they are published or not. The documents may come from teaching and research institutions in France or abroad, or from public or private research centers.

L'archive ouverte pluridisciplinaire **HAL**, est destinée au dépôt et à la diffusion de documents scientifiques de niveau recherche, publiés ou non, émanant des établissements d'enseignement et de recherche français ou étrangers, des laboratoires publics ou privés.

Probing discrete auroral arcs by ionospheric tomography

J. Moen¹, S. T. Berry², L. Kersley², B. Lybekk³

¹ The University Courses on Svalbard (UNIS), PO Box 156, N-9170 Longyearbyen, Norway

² Department of Physics, University of Wales, Aberystwyth, Ceredigion, SY23 3BZ, UK

³ Department of Physics, University of Oslo, PO Box 1048, Blindern, N-0316 Oslo, Norway

Received: 29 September 1997 / Revised: 3 February 1998 / Accepted: 4 February 1998

Abstract. Optical observations of 557.7 nm and 630.0 nm emissions from discrete auroral arcs in the post-noon sector have been related to localised field-aligned enhancements in the spatial distribution of E- and F-layer electron density respectively seen in images reconstructed by ionospheric tomography. Results from two case studies are presented in which meridian scanning photometer and all-sky camera observations on Svalbard have been compared to electron-density structures found by tomographic inversion of measurements made by reception of radio signals at a chain of four stations at high latitude. The F-layer features are long-lived and show exact correspondence to the red-line emissions. Transient arcs in green-line intensity result in E-region structures that are resolved in one case, but not in another where the dynamic auroral forms are separated by less than one degree of latitude. The signature of an inverted-V precipitation event is clearly evident in one example.

Key words. Ionosphere (Auroral ionosphere) · Magnetospheric physics (Auroral phenomena) · Radio science (Ionospheric physics)

1 Introduction

Narrow multiple discrete arcs, aligned in the magnetic east-west direction, are a regular feature of post-noon dayside auroral activity (Meng and Lundin, 1986; Evans, 1985). Such auroral behaviour occurs in the afternoon sector characterised by a maximum in the region 1 upward field-aligned current (Iijima and Potemra, 1978). Evans (1985) found from satellite data

analysis that precipitating electrons in the energy range 0.3–3 keV carried the current out of the ionosphere in latitudinally thin structures (~20 km average width) in this local time sector. Robinson *et al.* (1984) presented incoherent scatter measurements of an ionospheric F-region density enhancement attributed to an upward field-aligned current. They concluded that the associated electron beam located at the electric field reversal, produced a region of enhanced electron density by a process similar to that established for evening sector auroral arcs, but with less energetic electrons.

Several magnetosphere-ionosphere current coupling models exist to explain the formation of dayside multiple arc structures. Examples include the boundary layer dynamo model of Lundin and Evans (1985), who describe arc formation as a consequence of solar-wind filaments with excess momentum penetrating a closed-magnetosphere boundary layer. Polarisation within the layer results in field-aligned discharge currents closing in the ionosphere. A sequence of plasma filaments, where negative space charges build up, may map along upward field-aligned current sheets to the latitudinally thin, multiple discrete arcs in the ionosphere (Lundin and Evans, 1985). Another model describes multiple arc formation in the post-noon sector as a mapping of flux transfer events into the ionosphere (Crooker and Siscoe, 1990). As a patch of open flux moves away from the subsolar point, the ionospheric footprint becomes successively more elongated, resulting in the east-west aligned aurora. The model of Torbert and Mozer (1978) argued that electrostatic shocks in the large-scale region 1 current distribution were responsible for discrete auroral arcs, while Moen *et al.* (1994) proposed that discrete arcs, observed on convecting field lines equatorward of the convection reversal boundary, could be stimulated by KHI-driven kinetic Alfvén waves.

The intention of the present paper is to demonstrate for the first time that the techniques of ionospheric tomography can image electron density structures associated with discrete auroral activity in the post-noon sector. Ionospheric tomography provides a new method

of reconstructing the spatial distribution of electron density, using radio transmissions from satellites. Current-linked beams of electrons cause direct-impact ionisation that can be imaged by the tomographic technique. Results are presented of both F- and E-region enhancements in electron density that are related spatially to auroral emissions at 630.0 nm and 557.7 nm observed by ground-based optical instrumentation.

2 Instrumentation

2.1 Ionospheric tomography

Ionospheric tomography uses a chain of satellite receivers sited approximately along a line of geographic longitude. Phase-coherent radio signals on 150 MHz and 400 MHz, transmitted by the polar orbiting satellites in the Navy Navigational Satellite System (NNSS), are used to measure the total electron content (TEC) along many intersecting satellite-to-receiver ray paths. An inversion algorithm is then employed to reconstruct the spatial variation in electron density as a function of latitude and height. Further information on the development of experimental ionospheric tomography can be found in Kersley and Pryse (1994), with more recent results reported by Walker *et al.* (1996) and Kersley *et al.* (1997). The reconstructions described in this study were performed using a variation of the discrete inverse theory (DIT) method of Fremouw *et al.* (1992), modified to use Chapman profiles as a background containing large-scale features upon which the algebraic reconstruction technique (ART) was used to generate the final image (Gordon *et al.*, 1970).

For the present work four satellite receiving systems were located at Tromsø (69.8°N, 19.0°E), Bjørnøya (74.5°N, 19.0°E), Longyearbyen (78.2°N, 15.3°E) and Ny Ålesund (78.9°N, 11.9°E). Figure 1 shows the geographic locations of the receiving stations. The observations discussed here were obtained in December 1996, at times when corresponding ground-based optical data were available from Ny Ålesund and Longyearbyen.

2.2 Optical instrumentation

The optical instrumentation employed in this work included a meridian scanning photometer (MSP) located at Ny Ålesund, and a pair of all-sky cameras at Longyearbyen. The MSP scanned along the geomagnetic meridian to 10° above each horizon with a period of 18 s identifying auroral emissions as a function of zenith angle. The MSP was sensitive to the auroral green (557.7 nm) and red (630.0 nm) lines. The instrument thus examined the north-south motion of auroral features, with the all-sky cameras providing additional information on the east-west extent and the dynamical behaviour of the discrete forms. The first of the latter devices comprised a simple low-light television (TV) camera recording the total light emitted by auroral activity, from which images were digitised. The second

device was an all-sky CCD imager, fitted with a 630.0 nm interference filter to image only red-line forms, recording an image every 20 s with an exposure time of 2 s.

3 Observations

3.1 10 December 1996

Figure 2 shows stacked photometer plots for both 630.0 nm and 557.7 nm auroral emissions recorded at Ny Ålesund on 10 December 1996, in the time interval 13:39 UT to 13:52 UT (about 17:00 MLT). Each line trace represents the intensity at the appropriate wavelength across the viewing sweep of the MSP, which roughly represents the geomagnetic meridian. The plots show that auroral activity was dominated by bright multiple discrete forms in the green-line channel. The red line exhibits similar behaviour, but with considerably less variation in intensity. Figure 3 shows a red-filtered all-sky camera image at 13:46 UT mapped on to a geographic plane assuming an emission altitude of 250 km. The path of the NNSS satellite monitored by the ground receivers and crossing 75°N at 13:48 UT, is indicated on the image. The dominant feature seen is the bright auroral arc aligned east-west above and to the south of Ny Ålesund corresponding to activity identified in the MSP plot. Although the satellite pass over the region lasted around 20 min, 13:46 UT has been selected

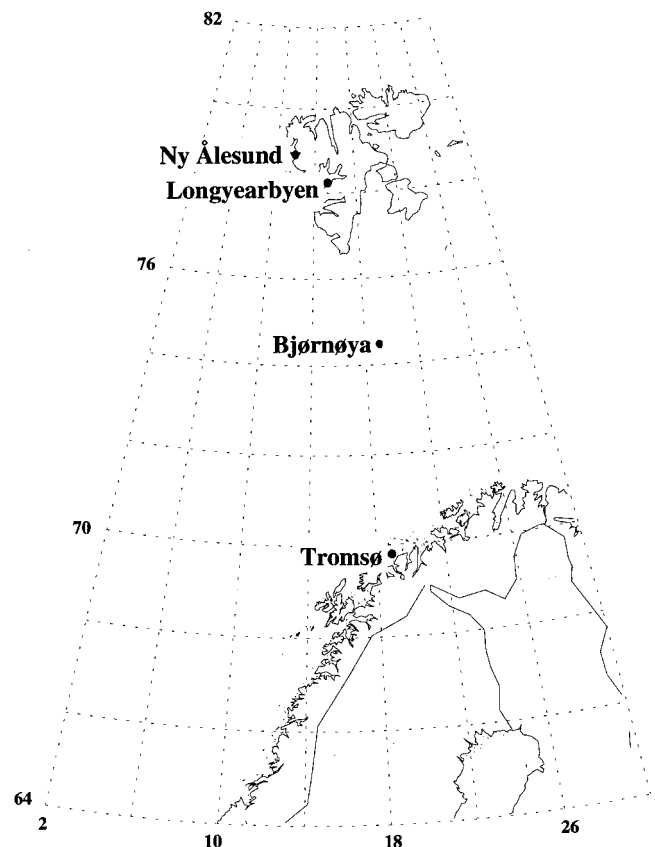


Fig. 1. Map showing satellite receiving system locations

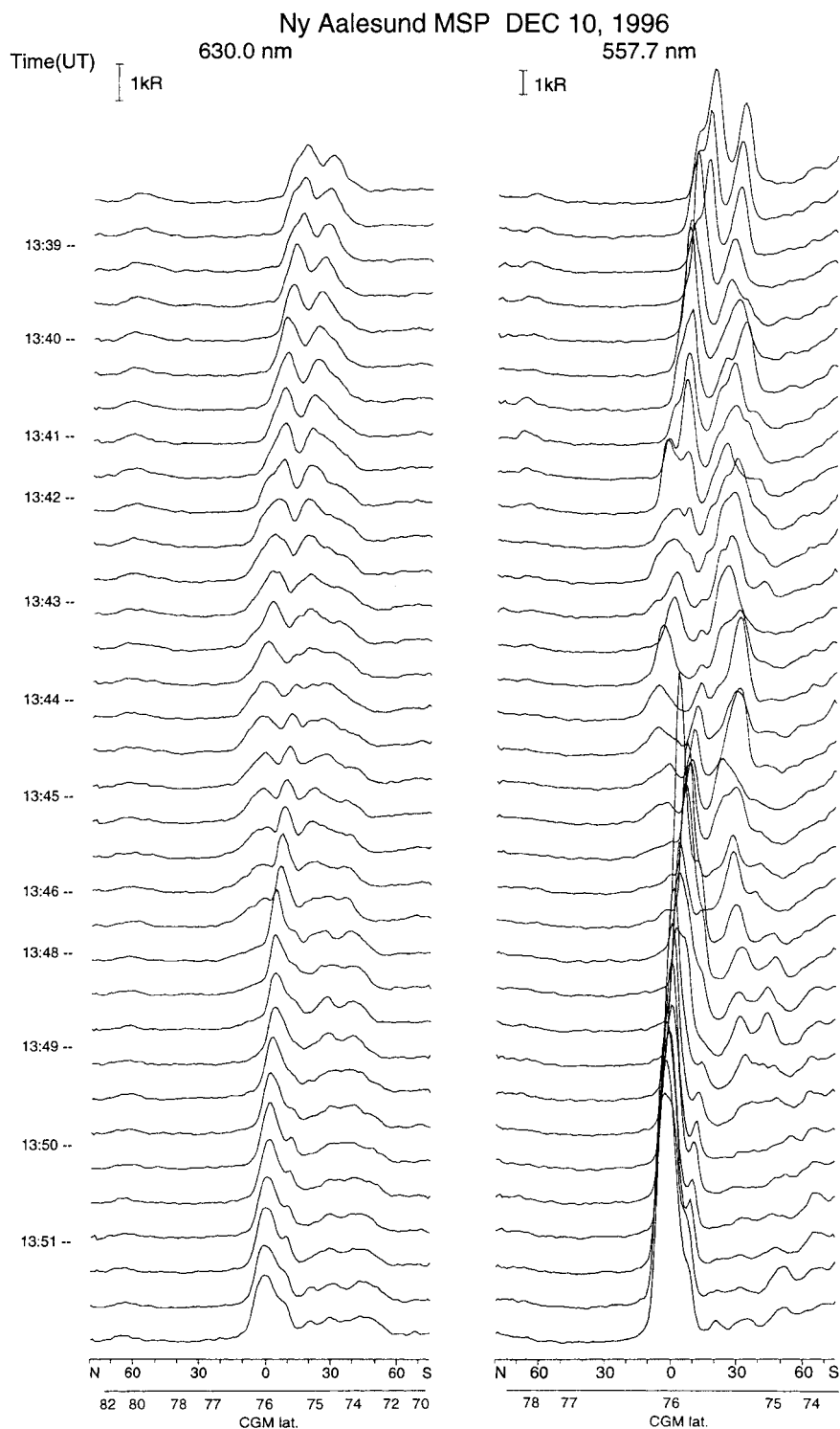


Fig. 2. Meridian scanning photometer data from 10 December 1996. Plot shows auroral emission intensities as a function of zenith angle for the 630.0 nm and 557.7 nm channels. A corresponding CGM scale has been superimposed on the plot

in Fig. 3 to represent the conditions when the measurements were made that were used for tomographic reconstruction in the vicinity of the auroral features. The satellite was southbound, so that about 13:39 UT the ray path to the receiver at Tromsø was intersecting the F-region while that for Bjørnøya cut through the E-layer, both above Svalbard. It is these rays that were giving information about the vertical structure of the ionisation to the tomographic process. However, much of the detail

of the horizontal extent of the field-aligned ionisation above Svalbard was obtained from quasi-vertical ray paths to the receivers at Ny Ålesund and Longyearbyen in a narrow time interval around 13:46 UT.

The resulting tomographic reconstruction is shown in Fig. 4. The image has been plotted over the latitudinal range 75° to 80°N to illustrate the main features of the polar ionosphere at this time. The dominant structures are an intense region of auroral-E ionisation around

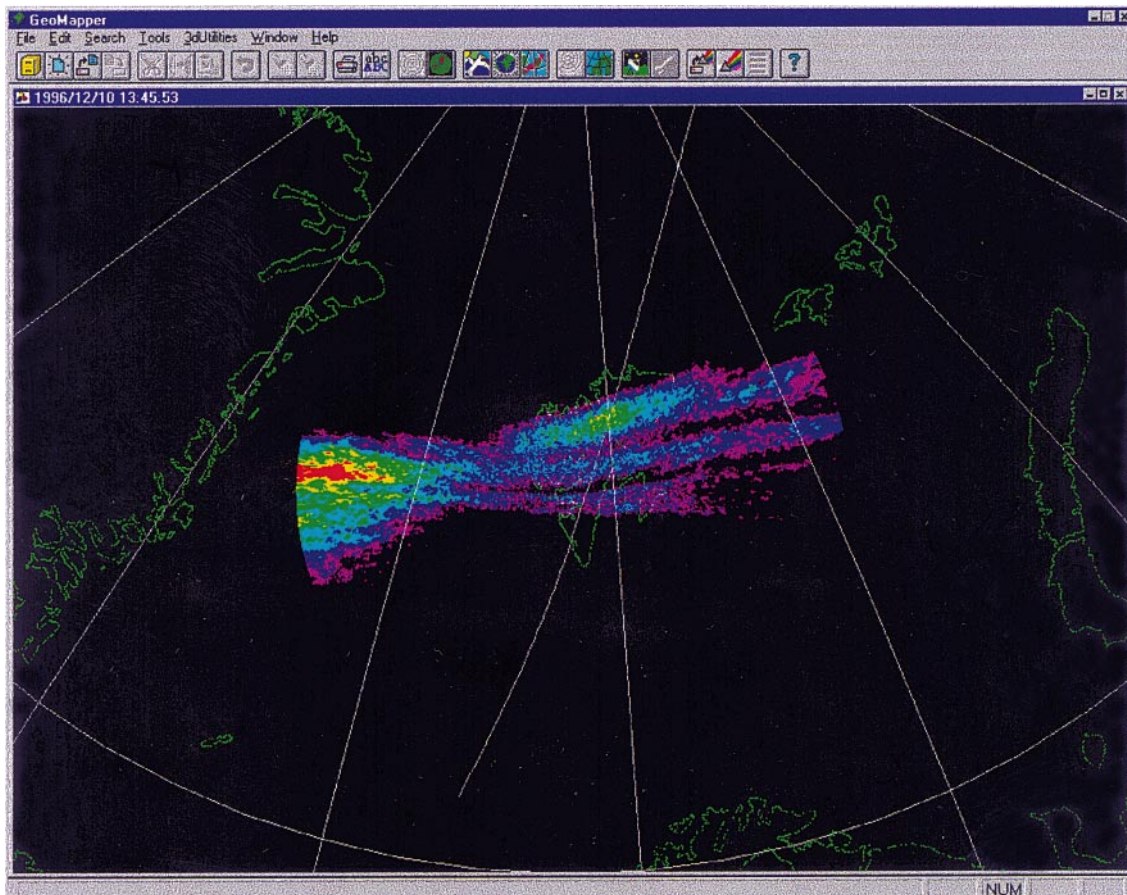


Fig. 3. Red-line emission all-sky camera image from Longyearbyen mapped onto a geographic plane assuming an emission altitude of 250 km at 13:46 UT on 10 December 1996. The *path* of the NNSS

satellite pass crossing 75°N at 13:48 UT is indicated on the figure by the *line* from northeast to southwest

78.6°N, with densities maximising at about $2 \times 10^{11} \text{ m}^{-3}$. In the F-region there is a strong field-aligned structure where the peak density reaches $2.2 \times 10^{11} \text{ m}^{-3}$. This feature is embedded in a larger structure of enhanced electron density extending from around 77° to 80°N. The MSP plot at about 13:46 UT (Fig. 2), the time most appropriate to the tomographic image, shows activity from just north of overhead and extending southwards to a zenith angle of approximately 40° in the red channel and from overhead to around 35° south of zenith in the green (557.7 nm). Assuming an emission height of 250 km for the red-line aurora and 120 km for green, the arc positions can be calculated in terms of distance from the observing site. Scales of corrected geomagnetic latitude have been included on Fig. 2 that can be related to the corresponding scale on the tomographic image. Remembering that most of the information about satellite to receiver ray paths come from a few minutes around 13:46 UT, comparison can be made of arc positions and the locations of features in electron density seen in the tomographic reconstruction. The E-region ionisation maximum corresponds well with the enhanced luminosity seen between 75°N and 76°N in the MSP plot, though detailed structuring is not resolved in the density image. The reconstruction has also imaged a weak underlying E-layer to the south that

may map to the enhanced green-line intensity toward the southern horizon. The region of increased plasma density near the F-layer peak covers essentially a similar latitudinal range as the enhanced red-line emission intensity. In addition, strong brightening just south of Ny Ålesund at around 13:46 UT in Fig. 2 relates well to the strong localised field-aligned increase in F-layer density imaged between Ny Ålesund and Longyearbyen. It must be remembered that the tomographic image is created from measurements made over a period of several minutes. The reconstruction process implicitly assumes that the electron-density structure is unchanging during this time. It is clear from the MSP observations that there were dynamic variations in the fine structure of the broader arc, with localised brightenings in luminosity and latitudinal motion in the location of the discrete features. The lack of fine structure and latitudinal broadening of the E-layer blob over Svalbard may have resulted from spreading of the image in a highly dynamic situation.

3.2 17 December 1996

A second case study uses observations from 17 December 1996, where the southbound satellite pass crossed

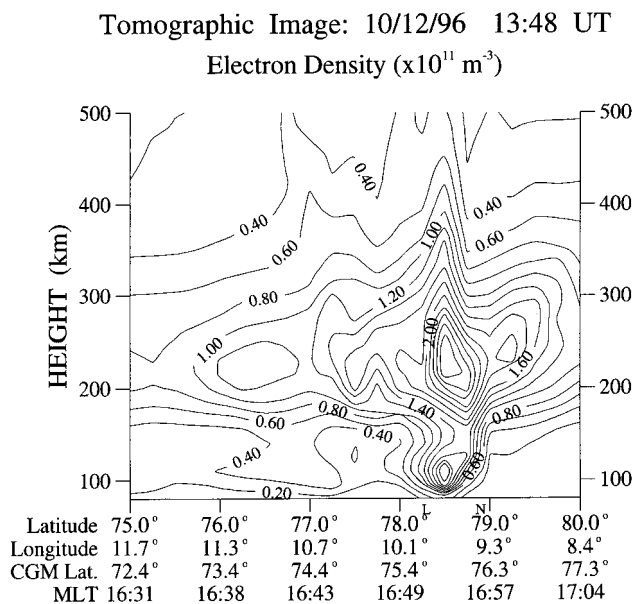


Fig. 4. Tomographic image of electron density for a satellite pass at 13:48 UT on 10 December 1996. The latitudes of Longyearbyen and Ny Ålesund are denoted by the letters *L* and *N* respectively

75°N at 12:06 UT. The appropriate MSP plot is shown in Fig. 5, with the region of interest being from around 11:58 to 12:04 UT with the most important information for the tomographic image over Svalbard coming from the last few minutes of this interval. Again, low intensity red-line emissions cover the field of view from zenith towards the south, though before noon a feature is also seen to the north. Some structuring is also found within the band, with two discrete enhancements from 12:01 to 12:04 UT, a time interval of particular interest here. Bright discrete arcs with at least two components are seen after midday in the 557.7 nm channel to the south of the observing site. The multiple east-west alignment of auroral activity is clearly displayed in the all-sky camera image in Fig. 6, where the total auroral intensity has been overlaid on a geographic projection assuming an emission altitude of 120 km. The dominant features are the pair of narrow arcs above and to the south of the viewing site in Longyearbyen, and a weaker, broader band over the northern portion of Svalbard.

The corresponding tomographic reconstruction is shown in Fig. 7. An auroral E-region extends over the Svalbard sites with a localised strong maximum just south of Longyearbyen and a second, less intense maximum just south of Ny Ålesund. There are several prominent F-layer enhancements with one overhead and one to the south of Longyearbyen, both with peak densities of $2 \times 10^{11} \text{ m}^{-3}$. Another structured feature lies above and to the north of Ny Ålesund.

Comparing the MSP plots (Fig. 5) and the electron densities (Fig. 6), the essentially twin peaked-structure of the green-line emission around 12:02 UT can be linked directly to the two enhancements in E-layer density seen in the tomographic image. The arc just south of Ny Ålesund is the more stable feature that maps to the narrower enhancement in plasma concen-

tration. The more dynamic arc around 75°N CGM maps to the broader blob in E-layer density seen above Longyearbyen. A transient feature in the 557.7 nm intensity seen between 74°N and 75°N around noon may be linked to the weaker extension of the E-layer density in that region, while the earlier brightening transient to the north may have its counterpart in the form of the $0.2 \times 10^{11} \text{ m}^{-3}$ E-layer contour at the northern extremity of Fig. 6.

The structure of the F-region near the layer peak seen in Fig. 6 can be related to the enhancements in 630.0 nm luminosity observed by the MSP (Fig. 5). The twin apparently field-aligned features above and to the south of Longyearbyen respectively align directly with the two auroral arcs found in the 12:01 UT to 12:04 UT time interval. Before noon there had been a brightening of an auroral form to the north of Ny Ålesund that may be linked to the F-layer density enhancement at the north of the plot, while the very weak feature overhead at 73°N CGM may represent a signature in the ionisation related to the transient increase in red-line intensity at this latitude after 11:58 UT.

4 Discussion

Examples have been presented of observations of discrete auroral forms in the post-noon sector and their links to ionisation at both E- and F-layer altitudes. The tomographic reconstructions of electron density have resolved discrete ionisation blobs in both height regimes. In the first case for 10 December 1997, an intense E-region feature was imaged, underlying a latitudinally broader F-region enhancement containing a narrow, apparently field-aligned structure. On 17 December 1997, the results showed a more extended E-region containing evidence of fine structure with a complex series of higher altitude F-region blobs.

Roble and Rees (1977) modelled the ionospheric electron density response to various precipitation conditions. Their model for dayside precipitation, dominated by low-energy (100–300 eV) electrons, demonstrated that the peak ionisation rate occurred at an altitude of around 250 km. Based on a dark ionosphere without solar ionisation input, the F-region density reached a steady state within 20 min of the precipitation onset. However, the 630.0 nm line auroral emission, caused primarily by secondary electron impact and with the lifetime of the OI ¹D state of 110 s, reaches a maximum intensity around 3 min after the start of the precipitation (Roble and Rees, 1977), so that the red-line activity can be used as an indicator of ongoing ionisation processes. The lower altitude E-region is essentially unaffected by soft-particle precipitation, as the stopping altitude for particles of these energies restricts activity to the F-region. Simulation of the ionospheric response to a particle spectrum peaking at energies greater than 1 keV showed that the ionisation rate achieved a peak at an altitude of 120 km with a corresponding rapid rise in E-region electron density. The F-region response is slower, and although the E-region recovers very swiftly

when precipitation ceases, residual density remains at greater altitudes for some time.

The post-noon sector is characterised by the field-aligned current activity, with discrete arcs resulting from keV precipitation. The particle energy spectrum contains a significant component of soft electrons that contribute at a slower rate to the F-region ionisation observed in the tomographic technique. The lifetime of F-region ionisation means, that in some cases, a direct

correlation between 630.0 nm optical events and electron density features may not be exact as convective motion drives features away from the precipitation source, and thus the location of the auroral activity. It is, therefore, possible that some of the density features seen here were caused by auroral events occurring prior to the tomography observations. This is probably the case in the image for 17 December (Fig. 7), where the structure in the F-layer extending north from around

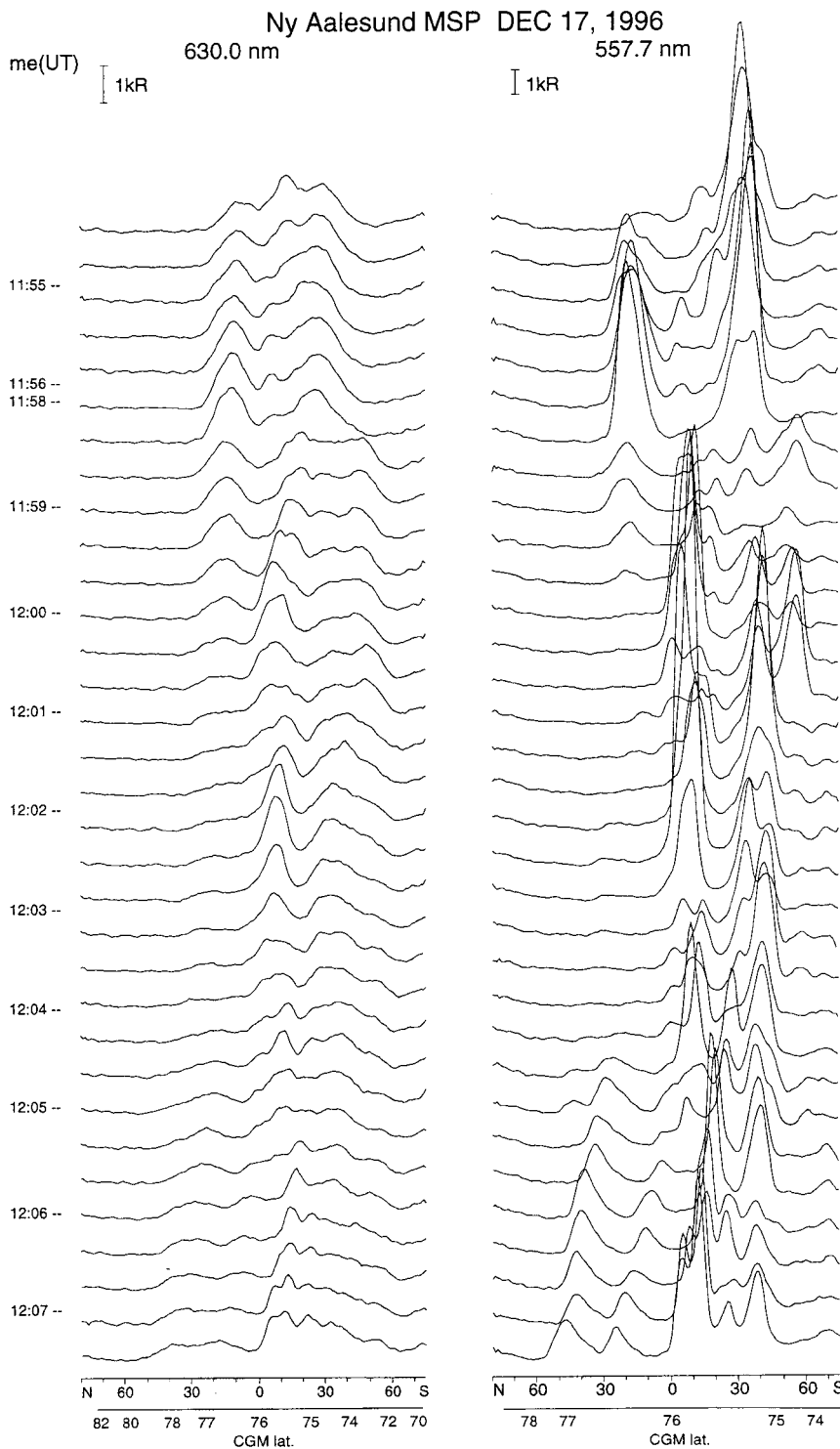


Fig. 5. Meridian scanning photometer data from 17 December 1996 for 630.0 nm and 557.7 nm channels with corresponding CGM scale

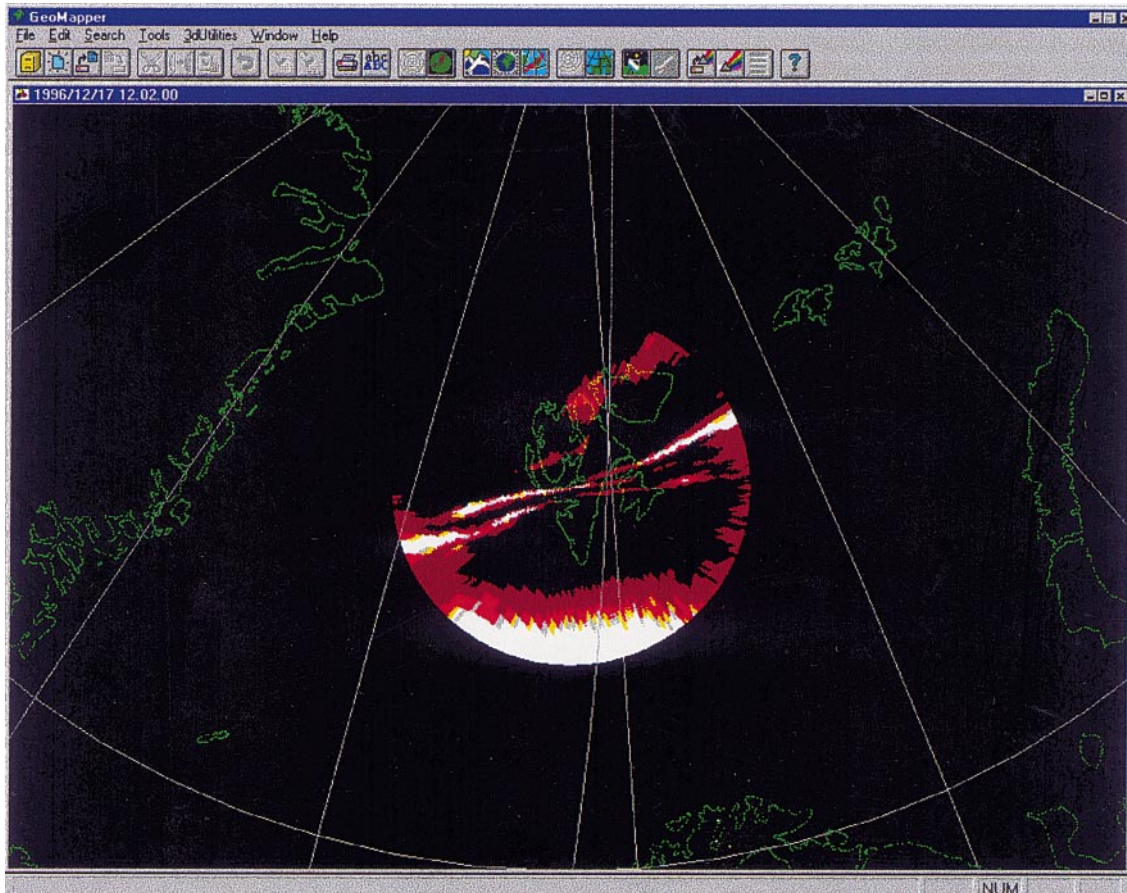


Fig. 6. Total auroral emission all-sky TV camera image from Longyearbyen at 12:02 UT on 17 December 1996, mapped on to a geographic plane assuming an emission altitude of 120 km. The path

of the *NVSS* satellite pass crossing 75°N at 12:06 UT, is indicated by the line running from northeast to southwest on the figure

Tomographic Image: 17/12/96 12:06 UT

Electron Density ($\times 10^{11} \text{ m}^{-3}$)

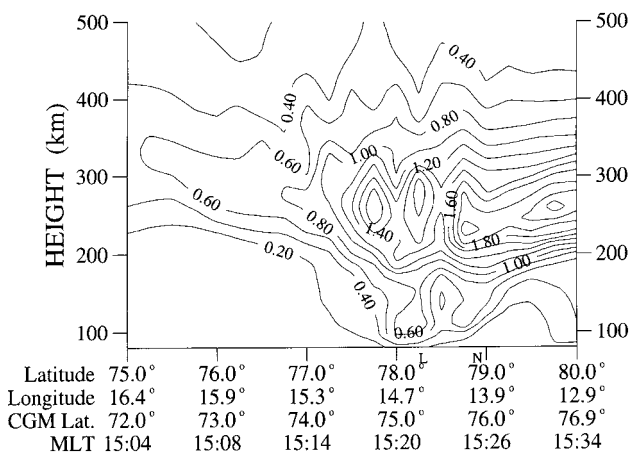


Fig. 7. Tomographic image of electron density for a satellite pass at 12:06 UT on 17 December 1996. The latitudes of Longyearbyen and Ny Ålesund are denoted by the letters *L* and *N* respectively

79°N appears to have been smeared latitudinally. Analysis of the MSP data reveals that long-lived auroral activity had occurred in this region some minutes

previously but was in rapid decay as the tomography satellite pass began. The latitudinally extensive ionisation enhancement is thus interpreted as the remnant of earlier ionisation processes, though subject to F-region plasma motion convecting it from the site of origin. Plasma drift is less important at E-region altitudes as the enhanced plasma features are constrained by collisions with neutral species during their comparatively short lifetime.

Energetic particles accelerated through a potential difference as part of the upward field-aligned current near the convection reversal boundary, give rise to ionisation. It is this ionisation that results in the E- and F-region features, imaged by the tomographic technique, that are coincident with the auroral features observed by ground-based optical instrumentation. Robinson *et al.* (1984), using the Sondre Stromfjord incoherent scatter radar, studied an F-region ionisation enhancement with a peak height of around 250 km associated with an upward field-aligned current populated by 350 eV electrons. The density of the enhancement was around $2 \times 10^{11} \text{ m}^{-3}$, comparable to the F-layer peak densities measured in the structures reconstructed in the tomographic images of the present study.

It has already been noted that the tomographic reconstruction was unable to resolve discrete structures

in E-layer density for the major feature seen on 10 December 1996, although the 557.7 nm emissions showed evidence for discrete though unstable auroral activity within a latitudinal band of about 1° . There was a long-lived system of two arcs occurring in very close proximity separated by around 10° in the MSP field of view. More importantly, the pair of auroral features move gradually poleward, with some individual motion of the arc positions about a central line, accompanied by an intensification in 557.7 nm brightness. It seems likely that this motion has blurred the resolution of the tomographic image, resulting in only the single, rather broader enhancement that appears in the E-region reconstruction. During very active conditions, considerable latitudinal motion of the current sheet and subsequently of 557.7 nm emissions can be expected so that multiple arcs may likely result in only an averaged view of E-region structure in the tomographic reconstructions. Poleward current motion in the present case may also have affected the F-region structure, which combined with probable plasma drift may have created the broad ($\sim 3^\circ$ latitude) feature.

Considerably less latitudinal motion of the green-line aurora was apparent on 17 December 1997, resulting in the resolution of the E-region features. The essentially more stable position of at least one of the arcs in this instance during the time of interest, and their separation by around 20° in the MSP field of view, results in a clear resolution of the features in the tomographic image. In addition, the southernmost enhancement is the stronger, reflecting the more persistent optical behaviour.

The main pair of F-region density enhancements imaged on 17 December 1996 straddle a line that approximates to the direction of the magnetic field line through the E-layer maximum, in a general formation that resembles the ionospheric signature of an inverted-V event. Rino *et al.* (1983) demonstrated that inverted-V events of soft-particle precipitation could cause 'upright-V' ionospheric signatures, with twin blobs of enhanced electron density in the F-region. For precipitating electrons in the energy range 0.3–3 keV, as expected in the post-noon sector (Evans, 1985), the harder precipitation component will generate localised green E-region aurora. With rapid loss processes at lower altitudes, the density pattern spreads out latitudinally with increasing height, possibly resolving into a pair of F-region blobs caused by the softer precipitation affecting the higher altitudes. It is possible that the structure above 75° CGM on 17 December 1996 is such an event.

5 Conclusion

The new experimental technique of ionospheric tomography enables monitoring of the spatial structure of electron density. The present work has demonstrated the success of the method in probing features associated with auroral precipitation at both E- and F-region altitudes. The discrete auroral arcs studied here occur in the post-noon sector of the region 1 current system. The

results demonstrate that ionospheric tomography offers a new tool for routine monitoring of the ionospheric signatures of the effects of field-aligned currents in the afternoon sector. The positions of field-aligned auroral features are well represented in the tomographic reconstructions, although further work is needed to characterise fully the arc signatures in the tomographic images. The technique may then have the potential to investigate the circumstances of whether or not discrete auroral arcs occur in daylight (Newell *et al.*, 1996).

Acknowledgements. This project has been given financial support from the University Courses on Svalbard (UNIS grant 9/963), from 'Nansenfondet' (grant 21/97), and grants from the Research Council of Norway and the British Council under the Scholarship Scheme for Collaboration Research Projects between Norway and Britain in 1997. Optical observation campaigns in Ny Ålesund have benefited from technical support from the Norwegian Polar Research Institute. Thanks also to Dr. K. Hayashi for all-sky TV camera recordings made in Longyearbyen.

The ionospheric tomography experiment is supported by the UK Particle Physics and Astronomy Research Council under grant GR/K98797. STB is a PPARC research student and acknowledges support from that body for an extended field trip to UNIS. The assistance of the University of Tromsø and the Norwegian Polar Research Institute in the experimented observations is acknowledged with thanks.

Topical Editor D. Alcaydé thanks P.E. Sandholt and A. Brekke for their help in evaluating this paper.

References

- Crooker, N. U., and G. L. Siscoe, On mapping flux transfer events to the ionosphere, *J. Geophys. Res.*, **95**, 3795–3799, 1990.
- Evans, D. S., The characteristics of a persistent arc at high latitude in the 1400 MLT sector, in *The polar cusp*, Ed. J. Holtet and A. Egeland, pp. 99–109, D. Reidel, Norwell, Mass., 1985.
- Fremouw, E. J., J. A. Secan, and B. M. Howe, Application of stochastic inverse theory to ionospheric tomography, *Radio Sci.*, **17**, 721–732, 1992.
- Gordon, R., R. Bender, and G. T. Herman, Algebraic reconstruction techniques (ART) for three-dimensional electron microscopy and X-ray photography, *J. Theor. Biol.*, **29**, 471–481, 1970.
- Iijima, T., and T. A. Potemra, Large-scale characteristics of field-aligned currents associated with substorms, *J. Geophys. Res.*, **83**, 599–615, 1978.
- Kersley, L., and S. E. Pryse, The development of experimental ionospheric tomography, *Int. J. Image Syst. Technol.*, **5**, 141–147, 1994.
- Kersley, L., S. E. Pryse, I. K. Walker, J. A. T. Heaton, C. N. Mitchell, M. J. Williams, and C. A. Willson, Imaging of electron density troughs by tomographic techniques, *Radio Sci.*, **32**, 1607–1621, 1997.
- Lundin, R., and D. S. Evans, Boundary layer plasmas as a source for high-latitude, early afternoon, auroral arcs, *Planet. Space Sci.*, **33**, 1389–1406, 1985.
- Meng, C. I., and R. Lundin, Auroral morphology of the midday oval, *J. Geophys. Res.*, **91**, 1572–1584, 1986.
- Moen, J., P. E. Sandholt, M. Lockwood, A. Egeland, and K. Fukui, Multiple discrete arcs on sunward convecting field lines in the 14–15 MLT region, *J. Geophys. Res.*, **99**, 6113–6123, 1994.
- Newell, P. T., C. I. Meng, and K. M. Lyons, Suppression of discrete aurorae by sunlight, *Nature*, **381**, 766–767, 1996.
- Rino, C. L., R. C. Livingston, R. T. Tsunoda, R. M. Robinson, J. F. Vickrey, C. Senior, M. D. Cousins, and J. Owen, Recent studies

- of the structure and morphology of auroral zone F region irregularities, *Radio Sci.*, **18**, 1167–1180, 1983.
- Robinson, R. M., D. S. Evans, T. A. Potemra, and J. D. Kelly**, Radar and satellite measurements of an F-region enhancement in the post-noon sector, *Geophys. Res. Lett.*, **9**, 899–902, 1984.
- Roble, R., G., and M. H. Rees**, Time-dependent studies of the aurora: Effects of particle precipitation on the dynamic morphology of ionospheric and atmospheric properties, *Planet. Space. Sci.*, **25**, 991–1010, 1977.
- Torbert, R. B., and F. S. Mozer**, Electrostatic shocks as the source of discrete arcs, *Geophys. Res. Lett.*, **5**, 135–138, 1978.
- Walker, I. K., J. A. T. Heaton, L. Kersley, C. N. Mitchell, S. E. Pryse, and M. J. Williams**, EISCAT verification in the development of ionospheric tomography, *Ann. Geophysicae*, **14**, 1413–1421, 1996.