



HAL
open science

Yarrowia lipolytica vesicle-mediated protein transport pathways.

Dominique Swennen, Jean-Marie Beckerich

► **To cite this version:**

Dominique Swennen, Jean-Marie Beckerich. Yarrowia lipolytica vesicle-mediated protein transport pathways.. BMC Evolutionary Biology, 2007, 7 (1), pp.219. 10.1186/1471-2148-7-219 . hal-00315525

HAL Id: hal-00315525

<https://hal.science/hal-00315525>

Submitted on 31 May 2020

HAL is a multi-disciplinary open access archive for the deposit and dissemination of scientific research documents, whether they are published or not. The documents may come from teaching and research institutions in France or abroad, or from public or private research centers.

L'archive ouverte pluridisciplinaire **HAL**, est destinée au dépôt et à la diffusion de documents scientifiques de niveau recherche, publiés ou non, émanant des établissements d'enseignement et de recherche français ou étrangers, des laboratoires publics ou privés.

This Provisional PDF corresponds to the article as it appeared upon acceptance. Fully formatted PDF and full text (HTML) versions will be made available soon.

Yarrowia lipolytica vesicle-mediated protein transport pathways

BMC Evolutionary Biology 2007, **7**:219 doi:10.1186/1471-2148-7-219

Dominique Swennen (dominique.swennen@grignon.inra.fr)
Jean-Marie Beckerich (jean-marie.beckerich@grignon.inra.fr)

ISSN 1471-2148

Article type Research article

Submission date 11 May 2007

Acceptance date 12 November 2007

Publication date 12 November 2007

Article URL <http://www.biomedcentral.com/1471-2148/7/219>

Like all articles in BMC journals, this peer-reviewed article was published immediately upon acceptance. It can be downloaded, printed and distributed freely for any purposes (see copyright notice below).

Articles in BMC journals are listed in PubMed and archived at PubMed Central.

For information about publishing your research in BMC journals or any BioMed Central journal, go to

<http://www.biomedcentral.com/info/authors/>

***Yarrowia lipolytica* vesicle-mediated protein transport pathways**

Dominique Swennen^{*} and Jean-Marie Beckerich.

Laboratoire de Microbiologie et Génétique Moléculaire

INRA-CNRS-AgroParisTech UMR 1238

CBAI BP01

F-78850 Thiverval Grignon

France

*Corresponding author

Email addresses:

DS: dominique.swennen@grignon.inra.fr

JMB: jean-marie.beckerich@grignon.inra.fr

Abstract

Background

Protein secretion is a universal cellular process involving vesicles which bud and fuse between organelles to bring proteins to their final destination. Vesicle budding is mediated by protein coats; vesicle targeting and fusion depend on Rab GTPase, tethering factors and SNARE complexes. The Génolevures II sequencing project made available entire genome sequences of four hemiascomycetous yeasts, *Yarrowia lipolytica*, *Debaryomyces hansenii*, *Kluyveromyces lactis* and *Candida glabrata*. *Y.lipolytica* is a dimorphic yeast and has good capacities to secrete proteins. The translocation of nascent protein through the endoplasmic reticulum membrane was well studied in *Y.lipolytica* and is largely co-translational as in the mammalian protein secretion pathway.

Results

We identified *S.cerevisiae* proteins involved in vesicular secretion and these protein sequences were used for the BLAST searches against Génolevures protein database (*Y.lipolytica*, *C.glabrata*, *K.lactis* and *D.hansenii*). These proteins are well conserved between these yeasts and *Saccharomyces cerevisiae*. We note several specificities of *Y.lipolytica* which may be related to its good protein secretion capacities and to its dimorphic aspect. An expansion of the *Y.lipolytica* Rab protein family was observed with autoBLAST and the Rab2- and Rab4-related members were identified with BLAST against NCBI protein database. An expansion of this family is also found in filamentous fungi and may reflect the greater complexity of the *Y.lipolytica* secretion pathway. The Rab4p-related protein may play a role in membrane recycling as *rab4* deleted strain shows a modification of colony morphology, dimorphic transition and permeability. Similarly, we find three copies of the gene (*SSO*) encoding the plasma membrane SNARE protein. Quantification of the

percentages of proteins with the greatest homology between *S.cerevisiae*, *Y.lipolytica* and animal homologues involved in vesicular transport shows that 40% of *Y.lipolytica* proteins are closer to animal ones, whereas they are only 13% in the case of *S.cerevisiae*.

Conclusion

These results provide further support for the idea, previously noted about the endoplasmic reticulum translocation pathway, that *Y.lipolytica* is more representative of vesicular secretion of animals and other fungi than is *S.cerevisiae*.

Background

Yarrowia lipolytica is a hemiascomycetous dimorphic yeast, generally regarded as safe (GRAS), which has been used for biotechnological applications. It is able to produce large amounts of several metabolites such as citric acid and to secrete a variety of extracellular proteins (alkaline or acid proteases, RNase, lipases *etc.*) [1]. Its good protein secretion capacities have allowed the engineering of powerful heterologous protein expression systems [reviewed in 2]. *Y.lipolytica* is also a conveniently tractable model organism, of which the secretion pathway was studied for several years in our laboratory [3]. We focused on the early steps of protein translocation in the endoplasmic reticulum [4, 5, 6, 7, 8], on the quality control of protein folding [9] and on the glycosylation pathway [10]. Several genes involved in these steps were cloned and analysed.

The results of the Génolevures II sequencing project of four hemiascomycetous yeasts [11] allowed us to search for proteins involved in the secretion pathway of *Y.lipolytica* and we compared them to the proteins of the three other yeasts, *Candida glabrata*, *Kluyveromyces lactis* and *Debaryomyces hansenii*. *C.glabrata* has become the second most common cause of candidiasis after *Candida albicans*. *C.glabrata* is not dimorphic, in contrast to other *Candida*

species, and is phylogenetically closer to *Saccharomyces cerevisiae* [12]. *K.lactis* is less closely related to *S.cerevisiae* and has the capacity to grow on lactose as a sole carbon source, it has been used for industrial applications [13, 14]. *D.hansenii* is a cryotolerant marine yeast which grows at salinities up to 24%. *D.hansenii* is the most common yeast found in cheese and provides proteolytic and lipolytic activities during cheese ripening [15]. In this work, we first established the list of proteins, predicted from whole genome analysis, which are potentially involved in vesicular transport in *Y. lipolytica*. Candidates were identified through BLAST searches against *S. cerevisiae* protein sequences. We then search for homologues of these proteins in the predicted protein set encoded by the three other genomes. Among the differences observed, we noticed a number of plasma membrane SNARE proteins (three Ssop) in *Y.lipolytica* compared to the four other yeasts. *S.cerevisiae* and *C.glabrata* have two SSO genes whilst in *K.lactis* and *D.hansenii*, we detected only one gene. We finally focused on one specific feature of the *Y.lipolytica* secretory pathway, namely the existence of a Rab4-related protein. In mammalian cells, the GTP binding protein Rab4p is involved in the regulation of plasma membrane protein recycling [16]. A Rab4-related protein is also found in *Schizosaccharomyces pombe* and in filamentous fungi such as *Neurospora crassa*, *Aspergillus fumigatus* or *Phaenerochaete chrysosporium* but is absent from *S.cerevisiae*, *Candida albicans* [17] and the three other hemiascomycetous yeasts. We constructed a strain of *Y.lipolytica* deleted for the *RAB4* gene and analysed its phenotypic pattern.

Results and discussion

Vesicle-mediated protein transport pathways

The only membrane that a secretory protein must traverse is the membrane of the endoplasmic reticulum, the transport of the protein to its final destination continues through

vesicles which bud and fuse between organelles [for reviews: 18, 19]. Vesicle budding is mediated by protein coats; vesicle targeting and fusion depend on Rab GTPase, tethering factors and SNARE complexes.

Vesicle budding

Protein coats (see Additional file 1):

Endoplasmic reticulum to Golgi transport

Endoplasmic reticulum to Golgi transport is mediated by the action respectively of the COPII and COPI coat complexes [20, 21, 22, 23 for reviews]. The COPII coat is assembled on the endoplasmic reticulum membrane and allows cargo selection and membrane budding [24]. The COPI complex is involved in retrieval of recycled proteins back to the endoplasmic reticulum [25]. COP I subunits could also have a role in vacuolar sorting [26].

COPII coat vesicles (see Additional file 2-1)

Vesicle budding is initiated by the activation of the GTPase Sar1p by the endoplasmic reticulum integral membrane guanine exchange factor Sec12p [27, 28]. Sar1p initiates membrane curvature [29, for mammalian Sar1p see 30]. The membrane-bound Sar1p-GTP recruits the heterodimer complex Sec23p-Sec24p. These pre-budding complexes are gathered by the Sec13p-Sec31p complex into nascent vesicles [see 31: the mammalian Sec13p-Sec31p structure]. The Sec23p subunit activates the hydrolysis of GTP by Sar1p and reverses the assembly process. Sec16p stabilizes the coat against premature disassembly after Sar1p hydrolyses GTP [32]. Using fluorescence resonance energy transfer to monitor the assembly and disassembly of COPII coat, it was suggested that a kinetically stable prebudding complex

was maintained during multiple Sar1p GTPase cycles [33]. In *S.cerevisiae*, there are one Sec23p, one Sec23p-related protein, one Sec24p, two Sec24p-related proteins (Sfb2p and Sfb3p) and one Sec12p homologue (Sed4p). In *Y.lipolytica* and *D.hansenii*, all the COP II coat components are well conserved and we find two Sec23p-homologues, two Sec24p-homologues but no Sed4p proteins. In *C.glabrata*, there are two Sec23p-homologues, three Sec24p-homologues and two Sec13p-homologues and in *K.lactis* we found the same proteins as in *S.cerevisiae* with the exception of Sfb2p and Sed4p.

COP I coat vesicles (see Additional file 2-2)

The COP I coat assembles by the same process as COP II complex involving an Arfp-GTPase [for a review about Arf1p : 34; mammalian Arf1p : 35; mammalian COPI assembly review: 36]. All the *S.cerevisiae* components are conserved in *Y.lipolytica*, though the *Y.lipolytica* Sec28p is only weakly related to the *S.cerevisiae* protein. In *K.lactis*, the Arf1 protein homologue was not identified but another Arf protein could play the role of Arf1p (see Additional file 2-12).

Post-Golgi transport

In the trans-Golgi network, the proteins are sorted to the plasma membrane, the endosomal/vacuolar system or recycled back from the endosome. Coated vesicle adaptors facilitate cargo selection [for reviews: 19, 37].

Adaptor protein complex (see Additional file 2-3)

In *S.cerevisiae*, by homology to the mammalian adaptor protein (AP) subunit sequences, three potential heterotetrameric adaptor protein complexes have been identified [38]. Each complex is composed of two large (Aplp), one medium (Apmp) and one small (Apsp) subunits. The

AP-1 complex is associated with clathrin-coated vesicles and is involved in retention of late Golgi membrane proteins [39] and trafficking to the vacuole [40]. This complex is alone able to associate with clathrin [38, 41]. Unlike the mammalian AP-2 complex which associates with endocytic clathrin-coated vesicles, the AP-2 complex of *S.cerevisiae* is apparently not involved in endocytosis. The AP-3 complex is involved in independent clathrin-coated vesicle transport of membrane proteins from Golgi to vacuoles [42]. In *Y.lipolytica*, we also identified three potential AP complexes. As in *S.cerevisiae*, two AP-1 medium subunits were found, but only two small subunits could be identified which could correspond to the AP-2 and AP-3 small subunits. The three other yeasts have the same set of proteins as *S.cerevisiae* for their adaptor protein complexes.

GGA proteins (Golgi-localized, γ ear-containing, ARF-binding proteins) (see Additional file 2-3)

GGA proteins are implicated in Golgi to endosomes clathrin-coated vesicle transport and bind to ubiquitin to facilitate this sorting [43, 44]. In *S.cerevisiae*, the *GGA* gene is duplicated but in the four yeasts studied, as in *C. elegans* and *D. melanogater*, there is only one gene: *GGA2* which, evolutionary, is closer to the hypothetical common ancestor [45].

Synaptojanin-like protein (see Additional file 2-3)

The *S.cerevisiae* Inp53p, a synaptojanin-like protein acts together with the AP-1 complex in the Golgi to endosome clathrin-dependant pathway which is distinct from the direct Golgi to prevacuolar compartment mediated by GGA proteins [46].

Retromer complex (see Additional file 2-4) and sorting nexins (see Additional file 2-5)

Sorting nexins play a role in retrieval of proteins from the prevacuolar compartment or post-Golgi endosomes and different nexins operate in different classes of endosomes [reviewed in 47, 48, 49]. The sorting nexins Snx4p, Snx41p and Snx42p are required for the retrieval of the SNARE Snc1p from the post-Golgi endosome; Grd19p and the retromer complex are involved in the retrieval of endosomal SNARE Pep12p from the prevacuolar compartment [50]. The retromer complex consists of five proteins: Vps5p, Vps17p, two sorting nexins which form a dimer and associate with the complex formed by Vps26p, Vps29p and Vps35p [see 51, 52 for mammalian retromer complex structure].

Vesicle targeting and fusion

RabGTPase (see Additional file 3 and Additional file 2-6)

Rab proteins are small monomeric guanosine triphosphatase (GTPase) which are membrane-associated and cycle between an active GTP-bound state and an inactive GDP-bound protein. These switches regulate all the steps in the secretion pathway. Mammalian Rab proteins belong to the Ras superfamily of GTPase. All the members of this superfamily have conserved nucleotide, phosphate and magnesium binding sequences but the Rab sequences can be distinguished by their C-terminal prenylation site and five Rab-specific regions (RabF) [53]. Pereira-Leal and Seabra [53] have also identified Rab subfamily specific regions (RabSF). They studied the evolution of the Rab family [54] and by their analysis, they observed that Rab proteins co-segregating in the phylogenetic trees showed a pattern of similar cellular localisation and/or function. In *S.cerevisiae*, Ypt1p, Ypt31p/32p and Sec4p are the essential Rab GTPases which regulate the exocytic pathway and Ypt6p, Ypt7p and Ypt51p/52p/53p are involved in the endocytic pathway. *S.cerevisiae* also has two other Rab GTPase, Ypt10p and Ypt11p which are also present in *C.glabrata* and we can find Ypt11p in *K.lactis*. Ypt10p seems to be involved in endocytic function and Ypt11p is required for

endoplasmic reticulum inheritance [55]. In *C.glabrata*, a Ypt53p homologue could not be identified and in *K.lactis* it is Ypt32p which was not found. In *Y.lipolytica*, we can find homologues of the nine *S.cerevisiae* proteins necessary for the secretion pathway. Ypt10p and Ypt11p are absent but we can find two other Rab-related proteins, Rab2p and Rab4p as in the filamentous fungi [17]. The analysis of the phylogenetic tree (Fig.1) obtained after alignment of several human Rabp, *S.cerevisiae* and *Y.lipolytica* Yptp sequences revealed that human Rab1p, Rab2p, Rab4p, Rab5p and Rab11p cosegregate with *Y.lipolytica* proteins. As *N.crassa* [56] and other filamentous fungi, *Y.lipolytica* has a large protein secretion capacity and is able to switch from a yeast life cycle to a filamentous form in response to environmental conditions; in this latter form it needs a better capacity of secretion and of recycling plasma membrane material. In mammalian cells, Rab2p has been proposed to regulate the retrograde transport between the Golgi and the endoplasmic reticulum [57] and Rab4p is involved in the recycling of plasma membrane proteins [see 16, 58 for a review about recycling pathways]. The comparison of the mouse, rat, human, *N.crassa*, *Schizosaccharomyces pombe* and *Y.lipolytica* sequences (Fig.2 and Additional file 4) shows that the nucleotide, phosphate and magnesium binding regions, the RabF and RabSF sequences are well conserved. We also compared these Rab4p sequences with other proteins of the mammalian Ras superfamily (data not shown) and we identified a sequence GIQYG next to the RabSF4 region, and particularly the tyrosine residue only present in the Rab4p sequences. The analysis with the NetPhos program (CBS prediction server) identified this tyrosine as a potential phosphorylation site. We suggest that this tyrosine could be important in the regulation of Rab4p activity. In order to get more information about this filamentous fungi specificity, we analysed the effects of a deletion of the gene coding for the *Y.lipolytica* Rab4-related protein. This deletion showed only slight phenotypic changes. The aspect of the colony on rich medium plate was slightly different (Fig.3). The ability to make the dimorphic transition was not impaired but at OD₆₀₀

of 10, we quantified that the percentage of cells undergoing a dimorphic transition for the wild type strain was 74% and 38% for the mutant strain and the cells in the yeast form had a more spherical appearance in the mutant strain than in the wild type and aggregated more readily (Fig.4). The round morphological aspect is also observed in the *Y.lipolytica rac* mutant, the Rac protein is another member of the Ras superfamily which is implicated in the induction of the hyphal growth [59]. The slight differences in the morphology of the mutant strains suggested a potential modification of the wall composition. This was confirmed by the increased sensitivity of the strain to calcofluor white (Fig.5), implicating an increase in chitin composition of the wall. We also observed a decrease in the sensitivity to SDS (Fig.5) suggesting a decrease in the porosity of the wall. These two events are also encountered when the genes coding for a heterotrimeric G-proteins of *Aspergillus nidulans* are mutated, these mutations in this filamentous fungus confer resistance to the antifungal plant PR-5 (Pathogenesis-Related) protein [60]. We suggest that the *Y.lipolytica* Rab4 protein could be important to recycle the receptor associated with a heterotrimeric G-protein. The mutant *Y.lipolytica rab4* strains were able to produce diploids as well as the wild type strain (data not shown) indicating that the recycling of the pheromone receptor, associated with a G-protein, was not impaired. The *Y.lipolytica* Rab4p does not regulate endocytosis as the incorporation of FM4-64 was the same as the wild type strain compared to a *sls2* mutant strain in which the FM4-64 incorporation is delayed (Fig.6). *Y.lipolytica* Sls2p is homologous to the *S.cerevisiae* Rcy1p which plays a role in the recycling pathway (see “The vesicle-SNARE Snc1p recycling” section below).

Regulation of Rab-GTPase [for reviews see 61, 62, 63, 64]

Rab proteins cycle between cytosolic inactive GDP-bound form and active membrane associated GTP-bound form. The cytosolic form exists in a complex with a GDP dissociation

inhibitor (GDI). Post-translational prenylation of the protein is important for its activity and prenylated Rabp is recruited to the appropriate membrane by a GDI displacement factor (GDF) which catalyses the dissociation step. The nucleotide exchange is favoured by the guanine nucleotide exchange factor (GEF). GTP-bound Rabp is then activated and can interact with its effectors. The recycling of the Rab protein is stimulated by the GTPase activating protein (GAP) and the GDP-bound Rab protein is released from the membrane by GDI.

Prenylation [65, see 66 for mammalian prenylation] (see Additional file 2-7)

Most of Rab proteins contain two C-terminal cysteine residues which are isoprenylated with two geranylgeranyl moieties. This reaction is catalyzed by geranylgeranyl transferase II (GGTase II), this enzyme has two subunits, a third subunit, Rab escort protein (REP), is a chaperone.

GDP dissociation inhibitor (GDI) (see Additional file 2-7)

Gdi1p recycles the Ytp/Sec4p proteins from their target membranes back to the vesicular pool [67].

GDI displacement factor (GDF) (see Additional file 2-7)

In vitro experiments with mammalian proteins identified that Yip3p catalyses the dissociation of endosomal Rab proteins from GDI [68]. The Yip family (Yip1p, Yip2p, Yip3p, Yip4p, Yip5p and Yif1p) are membrane proteins which interact with prenylated Rab proteins [69]. In *S.cerevisiae*, Yip1p has been identified through a two-hybrid screen as a protein interacting with Ypt1p and Ypt31p in their GDP form [70]. With a similar screen, Yif1p has been

identified as a Yip1p-interacting protein [71]. These two proteins form an integral membrane complex that bind Ypt1p and is required for Golgi membrane fusion by interaction with the Golgi SNARE proteins [72]. Yos1p (Yip One Suppressor 1) associates with Yip1p-Yif1p complex [73]. This protein was only identified in *D.hansenii*.

Guanine exchange factor (GEF) (see Additional file 2-7)

The activation and membrane stabilisation of the Rab protein are accompanied by exchange of the GDP for the GTP, this activity being catalysed by the guanine exchange factor. Each GEF is specific for a Rab protein and seems to be recruited by the activated Rabp playing a role immediately upstream in the secretion pathway [74, 75]. The TRAPP I protein complex binds the COP II vesicles and activates Ypt1p by guanine exchange [76]. TRAPP II Trs120p-Trs130p subunits join the TRAPP I complex to switch the GEF activity from Ypt1p to Ypt31p-Ypt32p acting in late Golgi [77, 78]. Sec2p [see 79 for the crystal structure and 80 for the crystal structure of the Sec2p/Sec4p complex] is a highly efficient guanine exchange factor of Sec4p [81], the Rabp essential for exocytosis [82, see 83 for Sec4p regulation cascade, 84 for Sec2p association with exocyst]. Vps9p is the Ypt51p GEF [85]. The Ric1/Rgp1p is the Ypt6p GEF [86], the BLAST against the *S.cerevisiae* proteins showed only one subunit in *Y.lipolytica*, Rgp1p, but by comparison with the *D.hansenii* protein we could identify a potential *Y.lipolytica* Ric1p. And Vps39p is the Ypt7p GEF [87].

GTPase activating protein (GAP) (see Additional file 2-7)

The recycling of the Rab protein is favoured by the GTPase activating protein. In *S.cerevisiae*, eight GTPase activating proteins have been identified and are not specific for one Rab protein in *in vitro* experiments [Gyp1p, Gyp6p, Gyp7p: 88; Gyp2p, Gyp3p, Gyp4p: 89; Gyp5p, Gyp8p: 90]. In the four yeasts, the Gyp3p homologue, Gyp4p was not identified.

Gyl1p is Gyp-like protein interacting with Gyp5p involved in the control of polarized exocytosis [91], this protein has an homologue only in *C.glabrata* but not in the three other yeasts.

Tethering factors (see Additional file 5), [reviewed in 92, 93, 94]

The secretory vesicles are tethered to their target membrane by two classes of molecules: coiled-coil proteins able to form homodimeric complex as long as several times the diameter of the vesicle and large multisubunit complexes.

Endoplasmic reticulum-cis-Golgi-network

Several factors are involved in the tethering of vesicles to the Golgi, TRAPP complex (see Additional file 2-8), COG complex (see Additional file 2-9) and Uso1p (see Additional file 2-10). TRAPP is associated with the Golgi and two forms of the complex exist: TRAPP I (7 subunits) acts in the endoplasmic reticulum to Golgi transport and TRAPP II which contains the TRAPP I subunits together with three other proteins acts in Golgi traffic. In *Y.lipolytica* only two TRAPP II specific subunits were identified by comparison with the *S.cerevisiae* protein sequences but for the Trs65p we used the protein identified in *D.hansenii* to detect a potential *Y.lipolytica* protein. Both complexes are able to interchange guanine nucleotide on Ypt1p. *In vitro*, TRAPP I can bind COPII vesicles by binding the coat Sec23p subunit [95] and this could be the first event before interaction of the vesicle with its target [76]. The crystal structure of the mammalian Bet3p, the most conserved TRAPP protein, reveals a dimeric structure with hydrophobic channels and a covalent modification with a palmitate [96, 97], the crystallographic study of the complex Bet3p-Trs33p reveals specific interactions between these subunits [98]. This subunit could be responsible for the targeting and the anchoring in the Golgi membrane and could direct the other TRAPP components to the Golgi

[96, 99]. Trs120p, a TRAPP II subunit, is required for vesicle traffic from the early endosome to the late Golgi [100]. Trs120p and Trs130p TRAPP II subunits are conserved from yeast to mammals; the Trs65p subunit is conserved only in some fungi and unicellular eukaryotes [101]. The other tethering factors, Uso1p, a long coiled-coil protein and the COG complex composed of eight subunits in *S.cerevisiae* are recruited before the last step of membrane fusion. Uso1p and the COG complex also have a function in sorting of endoplasmic reticulum-vesicles containing GPI-anchored proteins [see 102 for a review about differential ER exit] and in retrograde vesicular trafficking within the Golgi [reviewed in 103]. The Uso1 protein consists of an N-terminal globular head region, a coiled-coil tail which mediates dimerisation and a C-terminal acidic region. The NCBI Conserved Domain Architecture Retrieval Tool has identified in the *Y.lipolytica* Uso1 protein the first two domains but not the C-terminal acidic region. When we compare the consensus sequence of this region with the *Y.lipolytica* sequence, only the last 50 residues of this domain are well conserved. The *Saccharomyces cerevisiae* and the mammalian COG complex are composed of eight subunits, a multiple of four subunits, as one the GARP and the exocyst complexes (see below), which could reflect an interaction with a four-component complex such as the trans SNARE complex [92]. In *Y.lipolytica*, only five subunits were identified as probable COG proteins by comparison with the *S.cerevisiae* proteins. Cog1p, Cog2p and Cog7p were not detected by BLAST searches but in mammals these proteins were identified by their function as their sequence similarity with the *S.cerevisiae* proteins is low [104]. Cog2p was found in *D.hansenii* and its sequence used to make the BLAST search with the *Y.lipolytica* proteins. This allowed the identification of a potential *Y.lipolytica* Cog2p homologue, but Cog1p and Cog7p were not found in *Y.lipolytica*, and in *D.hansenii*, Cog1p was not found. These proteins probably exist but should be identified by another means.

Cis-Golgi-network-Endoplasmic reticulum (see Additional file 2-11)

Dsl1p complex is a large complex composed of the peripheral endoplasmic reticulum membrane proteins Dsl1p, Dsl3p (Sec39p) and Tip20p [105, 106]. Dsl1p contains three domains, an N-terminal coiled-coil region of 200 aminoacids which interacts with Tip20p, a central highly acidic region of interaction with Ret2p and Ret1p (two COP I subunits) and a conserved C-terminal sequence which could recruit cytoskeletal elements [105]. The 200 amino acid N-terminus from the Dsl1p protein identified in *Y.lipolytica* does not align with the *S.cerevisiae* sequence. Nevertheless the *Y.lipolytica* sequence also contains potential coiled-coil regions (as determined by the coiled-coil prediction program, NPS@:Network Protein Sequence Analysis, [107]). The Tip20p sequence of *Y.lipolytica* has only 19 % identities with the *S.cerevisiae* sequence. This could explain the divergent N-terminal sequence of Dsl1p which is involved in the interaction of the two proteins. Dsl1p, Tip20p and Dsl3p are required for the stability of the SNARE complex at the endoplasmic reticulum [106].

Golgi

S.cerevisiae TRAPP II complex (see Additional file 2-8) is composed of ten subunits and could have a role in retrograde transport of Golgi vesicles [108]. The trs130 mutant (coding for a TRAPP II subunit) displays synthetic interaction with mutation in a COPI subunit (Ret2p) and a deletion of ARF1 (see Additional file 2-12) is implicated in COPI formation [108].

A role of the COG complex (see above) has also been found in retrograde transport to early Golgi vesicles [109].

The VFT/GARP complex (see Additional file 2-13) localizes to the trans-Golgi network and is required for retrograde traffic from early endosomes to the Golgi [110, 111]. The

S.cerevisiae complex is composed of four subunits [112, 113], it is the effector of Ypt6p and interacts with the SNARE Tlg1p. Only three subunits were identified in *Y.lipolytica* and *D.hansenii* but the undetected Vps51p unit also has no homologue in mammalian [114] and seems to be a regulatory subunit [97] which could be replaced by another protein as suggested by Liewen, *et al.* [114]. The structural analysis of the interaction between *S. cerevisiae* Tlg1p and Vps51p has determined an N-terminal peptide of Vps51p which deletion does not block transport to the late Golgi from endosomes [115].

Golgin (see Additional file 2-10, -12) [reviewed in 116, 117] are coiled-coil proteins which organize the structure and the trafficking pathways in the Golgi. These proteins have mainly been studied in mammalian cells but in *Sacharomyces cerevisiae* several homologues have been identified: Uso1p is the homologue of the mammalian p115 required for endoplasmic reticulum-to-Golgi transport; Grh1p, the GRASP65-homologue, a Golgi localized protein component of the spindle assembly checkpoint [118]; Imh1p, involved in transport between an endosomal compartment and the Golgi, Imh1p contains a Golgi-localization (GRIP) domain that interacts with activated Arl1p-GTP to be localized to the Golgi, this is regulated by Arl3p [119; 120] and Arl3p requires the N-terminal acetyltransferase NatC complex and the protein Sys1p to be targeted to the Golgi [121] [for a review about Arl proteins see 122]; Coy1p, the CASP homologue, a Golgi membrane protein related to Giantin, its deletion in *S.cerevisiae* restores normal growth to cells lacking the SNARE Gos1p [123] and Rud3p, a golgin-160-related protein, is a Golgi matrix protein that is involved in the structural organization of the cis-Golgi [124].

Golgi-Endosome, Endosome-Vacuole [37]

The TRAPP II subunit Trs120p is required for vesicle traffic from early endosome to the late Golgi [100].

The Vps Class C/HOPS complex [reviewed in: 92, 125] (see Additional file 2-14):

The HOPS complex composed of Vps11p, Vps18p, Vps16p, Vps41p with the protein Vps19p are the effectors of Ypt51p in endosomal traffic. In vacuolar transport, the complex seems to recruit the Rab Ypt7p GEF Vps39p which activates Ypt7p. Activated Ypt7p acts on the HOPS complex to promote tethering and binding to the SNARE Vam3p through the interaction with the SNARE-binding protein, Vps33p. Vps33p together with other HOPS complex subunits is found in complex with Vps8p, a hydrophilic membrane-associated protein [126]. HOPS complex binds phosphoinositides and SNARE Vam7p [127].

Golgi-Plasma Membrane

The Exocyst (see Additional file 2-15, -16)

The *S.cerevisiae* exocyst complex is composed of eight subunits (Sec3p, Sec5p, Sec6p, Sec8p, Sec10p, Sec15p, Exo70p and Exo84p), a quatrefoil complex as in the COG and the GARP complexes [92]. The activated Rab protein, Sec4p, present on the secretory vesicles, binds the exocyst subunit Sec15p in subcomplex with Sec10p resulting in the association with the other subunits and Sec3p [128]. Sec3p is the spatial landmark defining the sites of polarized exocytosis [129]. The localization of Sec3p is mediated by Rho GTPases, Rho1p [130] and Cdc42p [131]. Rho3p plays a role in exocytosis through its interaction with Exo70p [132, 133, 134]. These Rho proteins also have a role in actin polymerisation. Assembly of the exocyst occurs when the subcomplex associated with the vesicles joins Sec3p and Exo70p on the plasma membrane [135]. The Sec6p subunit dimerizes and interacts with the SNARE Sec9p, playing a role in SNARE complex regulation [136]. A cyclical regulatory network contributes to the establishment and maintenance of polarized cell growth [137]. Bem1p interacts with Sec15p and is involved in the Cdc42p-mediated polarity [138].

SNARE (Soluble N-ethylmaleimide-sensitive factor Attachment protein REceptor) proteins [see reviews: 125, 17, 139, 140, 141 for mammalian SNAREs] (see Additional file 6 and Additional file 2-17)

After the tethering of the vesicle close to its target membrane, the fusion of the membranes is initiated through the action of SM (Sec1/Munc18, see below) and SNARE proteins. SNARE proteins share one conserved sequence called the SNARE motif which contains 60-70 amino acids that include heptads repeat typical of coiled coils. They contain a C-terminal transmembrane domain or a hydrophobic post-translational modification motif. SNARE proteins associate to form complex undergoing conformational changes. Free SNARE motifs are unstructured and when they are associated in a complex they assemble into elongated four-helical bundles. SNAREs are present on the vesicle and the target membranes and the formation of the complex pulls the membrane close together. SNARE proteins are classified in to subfamilies based on a highly conserved layer of interacting amino acids (three glutamines: Qa-, Qb-, Qc-, one arginine: R-) in the centre of the helix bundle. All complexes contain one copy of each SNARE motif. In *S.cerevisiae*, twenty-four SNARE-encoding genes have been identified [reviewed in 139]. Twenty-two of these genes could be found in *Y.lipolytica* by sequence homology. As in other fungi [17], Vam3p and Spo20p were not detected. Spo20p, which seems specific to *S.cerevisiae* (also not identified in the three other yeasts), contains both Qb and Qc SNARE motifs and is required during sporulation for the prospore membrane formation [142, 143]. Vam3p SNARE is required for homotypic vacuole fusion in *S.cerevisiae* and there is no homologue outside the Saccharomycetes, the Saccharomycetaceae, *K.lactis*, has a Vam3p SNARE, but in *D.hansenii*, another Saccharomycetaceae as in *Y.lipolytica* (Dipodascaceae) the Vam3 protein was not detected. The mitosporic Saccharomycetales, *C.glabrata*, possess a Vam3 protein. Pep12p is a late endosomal Qa SNARE with sequence similarity with Vam3p, that can complement *vam3*

mutants [144]. In *Y.lipolytica* and in *D.hansenii*, the BLAST searches allowed us to identify the Pep12p SNARE and another SNARE we propose to name Pep12p-like because its sequence is closer to Pep12p than to Vamp3p. This Pep12p-like SNARE could play the role of the *S.cerevisiae* Vam3p in both yeasts. A specificity of *Y.lipolytica* is the presence of three *SSO* genes resulting probably from gene triplication, and this seems unique to *Y.lipolytica*. The Sso proteins are implicated in the fusion of the secretory vesicles to the plasma membrane and *S.cerevisiae* Sso1p also has sporulation-specific functions [145]. The multiplicity of *SSO* genes in *Y.lipolytica* could reflect its good secretion capacity and its capacity to induce hyphal growth which needs better recycling of plasma membrane material. On the contrary, only one Sso protein (Sso2p) and one Snc protein (Snc2p) were found in *K.lactis* and *D.hansenii*. The *SSO* and *SNC* genes of *K.lactis* have been cloned by complementation in *S.cerevisiae* of *sso2-1* and *snc1Δ snc2Δ sem1Δ* mutant strains. The *K.lactis* Ssop can perform both of the *S.cerevisiae* Ssop functions and the *K.lactis* Sncp seems to perform only the *S.cerevisiae* Sncp functions [146]. Sft1p was not detected in *C.glabrata*, Syn8p was not detected in *C.glabrata* and *K.lactis* and Nyv1p was not detected in *D.hansenii*.

Regulation of fusion

The Sec1/Munc18 (SM) proteins (see Additional file 2-18) [reviewed in 147]

The SM proteins confer specificity to membrane fusion through their binding to the N-terminal domain of the Qa SNARE protein. Four SM proteins have been found in *S.cerevisiae*, Sly1p acting between the endoplasmic reticulum and Golgi [148] and Sec1 at the final step of exocytosis, Vps45p and Vps33p playing a role between Golgi and endosomes and between endosomes and vacuole. Each SM protein can bind several Qa SNARE but also other SNARE implicated in the same complex, as has been shown for Sly1p [149]. In addition

one SNARE can bind two SM proteins at the same organelle: Vps45p and Vps33p with Pep12p [126]. Mso1p, a Sec1p-interacting protein, binds to SNARE complex and plays an essential role for vesicle fusion during prospore membrane formation [150, 151].

Vsm1p (see Additional file 2-19)

The phosphorylation of SNAREs by the cAMP-dependent protein kinase (PKA) regulates their ability to assemble into functional complexes [152, 153]. Phosphorylation of the Sed5p t-SNARE regulates endoplasmic reticulum-Golgi transport as well as Golgi morphology [154]. The Ssop phosphorylation allows the binding of Vsm1p, a negative regulator of secretion which prevents the formation of the SNARE complex [155]. Dephosphorylation of Ssop by ceramide activated protein phosphatase (CAPP) increases its ability to form a complex with Sec9p [152]. Three *S.cerevisiae* genes code for a PKA but only one gene could be identified in *Y.lipolytica* and *D.hansenii* and two were identified in *C.glabrata* and *K.lactis*. The CAPP is composed of two regulatory subunits (Tpd3p and Cdc55p) and one catalytic subunit (Sit4p) which were found by sequence homology in the four yeasts in addition to further one Tpd3p-like in *C.glabrata*.

SNARE recycling

SNARE complex dissociation (see Additional file 2-20):

After the membrane fusion step, the trans-SNARE complex becomes a cis-SNARE complex whose dissociation requires the ATPase Sec18p and the soluble NSF-attachment protein (Sec17p) as cofactor [156, 157]. In vacuole fusion, Sec17p may displace HOPS from SNAREs to permit subsequent rounds of fusion [158]. Two Sec18 proteins were detected in *C.glabrata*.

The vesicle-SNARE Snc1p recycling (see Additional file 2-20)

The *S.cerevisiae* *RCY1* gene has been identified with a screen for mutants affected in membrane trafficking along the endocytic pathway [159]. Rcy1p contains an amino-terminal F box and a CAAX box motif in its carboxyl-terminal sequence. The F box region of the protein is required for the recycling of the vesicle-SNARE Snc1p. The CAAX box is required for its localization in polar growth regions. Rcy1p interacts with Skp1p through the F box motif and both proteins form a complex necessary for the recycling function [160]. Rcy1p is a positive regulator of Ypt6p [161]. Gyp1p, the Ypt1p GTPase activator is also involved in the recycling of Snc1p [162], as well as Snx4p, Snx41p and Snx42p [43]. The ARF-GAP Gcs1p facilitates the incorporation of the Snc1p into COPI recycling vesicles [163]. Rcy1p is a downstream effector of Ypt31, 32p [164].

In *Schizosaccharomyces pombe*, Pof6p, the Rcy1p-homologue, has been identified through a two-hybrid interaction with Skp1. Both proteins are required for normal septum processing and cell separation [165], a function which may also require the exocyst function [166].

Previous to these works, a mutation *sls2-1*, was isolated in *Y.lipolytica* that causes synthetic lethality when combined with the conditional lethal mutation in the 7S RNA of the signal recognition particle [167]. Rcy1p and Pof6p are the homologues of Sls2p.

Conclusions

The sequencing of four hemiascomycetous yeasts has allowed us to search for proteins involved in vesicular transport by comparison with proteins identified in *S.cerevisiae*. The method used does not allow the identification of a protein which does not exist in *S.cerevisiae* or does not belong to a protein family. To identify new candidates, a list from other organism should be established or experimental approach should be performed. The proteins identified

are highly conserved between the five yeasts but we have brought to light several specificities of *Y.lipolytica* in keeping with its good protein secretion capacities and its dimorphic aspect. In Table 1, we summarize these differences. Some of the proteins for which we did not find homologues have probably a too divergent sequence to be identified through the BLAST searches and may be identified in the future by functional screens. But, the presence of Rab2p- and Rab4p-related proteins as is found in fungi, a potential role of Rab2-related protein and Ypt1p in vesicular transport between endoplasmic reticulum and Golgi and of Rab4-related protein in addition to Sls2p/Rcy1p in membrane recycling reflect the greater complexity of the *Y.lipolytica* secretion pathway, which is probably dictated by the necessity to secrete and recycle membrane material needed for its filamentous growth. In this work, we have shown that the Rab4p-related protein could have a role in this membrane recycling since a modification of the aspect of the colony, the decrease of the number of cells undergoing dimorphic transition and the change of the wall permeability of the *rab4* deleted strain were observed. The three Sso proteins are also indicative of a large secretion capacity and a study of this specificity would be interesting. As previously shown through the diverse studies of *Y.lipolytica*, this dimorphic yeast has a secretion pathway closer to the mammalian one than has *S.cerevisiae*. Its translocation apparatus is largely devoted to the co-translational translocation of nascent peptides through the endoplasmic reticulum membrane as is seen in mammalian cells. *C.glabrata* and *K.lactis* are the closest to *S.cerevisiae* for the proteins listed. We found among the *C.glabrata* proteins, 2 COPII coat protein Sec13p-homologues and 2 Sec18p-homologues implicated in the SNARE recycling and this seems to be specific to this yeast. For *K.lactis* and *D.hansenii*, only one Ssop and one Sncp were detected. Though *D.hansenii* is classified in Saccharomycetaceae, as is *S.cerevisiae*, and *Y.lipolytica* is a Dipodascaceae, these two yeasts seem closer at least for the proteins involved in vesicular transport. These results are in agreement with the phylogenetic tree presented by Dujon *et al*

[11]. In Fig.7a, we have shown the proportion of the 165 *Y.lipolytica* protein sequences listed (see Additional file 2: *Y.lipolytica* column) with the greatest homology to *S.cerevisiae*, *C.glabrata*, *K.lactis*, *D.hansenii*, *Schizosaccharomyces pombe*, *N.crassa*, other fungi, animals and plants sequences (see Additional file 7). 72% of these proteins are closest to fungi and *N.crassa*. If we exclude animals, plants and fungi (keeping only *N.crassa*) from this search (Fig.7b), we observed that 52% of the *Y.lipolytica* proteins listed are closer to *N.crassa*. The last comparison is performed without *N.crassa* (Fig.7c): in this case, 40% of the proteins are closer to *D.hansenii*. This could reflect their common physiology, the filamentous growth and good secretion ability for *Y.lipolytica* and *N.crassa* and their proteolytic and lipolytic activities and high salt tolerance [168] for *Y.lipolytica* and *D.hansenii*. These results confirm that considering the identified proteins playing a role in vesicular transport, *Y.lipolytica* is closer to the fungi than to *S.cerevisiae*. The proteins that are the best conserved between *S.cerevisiae* and *Y.lipolytica*, are the SNARE proteins (see Additional file 7). In Fig.8a, we have presented the percentage of the *Y.lipolytica* proteins with the greatest homology to the *S.cerevisiae* and animal: 40% of these proteins are closer to the animal ones, particularly, proteins of the AP complexes, Ypt and Arf proteins, TRAPP and HOPS complexes (see Additional file 7), whereas for *S.cerevisiae*, only 13% of these proteins are closer to animals than to *Y.lipolytica* (Fig.8b, see Additional file 8). Koumandou and coworkers [169] have analysed the protein sequences of tethering complexes and SM proteins from five eukaryotic supergroups. They conclude that the most recent common eukaryotic ancestor had a complex endomembrane system with COG, Exocyst, Dsl1, GARP tethering complexes which could have originated from one common ancestral complex, TRAPP and HOPS complexes which are independently derived and all four SM protein families represented. The phylogenetic tree presented by Dujon *et al* [11] indicates that *Y.lipolytica* may be less distant from the last common eukaryotic ancestor and the observation of a good sequence conservation between

Y.lipolytica and animal TRAPP and HOPS subunits for example, suggests that these complexes are required for the evolution of multicellular organisms. Similarly, Hall *et al.* [170] showed that Rab4p was an ancient component of the endomembrane trafficking system since it exists, and its recycling function is conserved, in *Trypanosoma brucei* which belongs to an eukaryotic supergroup separated from that of yeast, fungi and animals. In *Y.lipolytica* also, the presence and the possible recycling role of a Rab4-like protein was observed while in *S.cerevisiae* and in the three other hemiascomycetous yeasts, this protein has been lost. These observations indicate that *S.cerevisiae* has diverged further from the last common eukaryotic ancestor than has *Y.lipolytica*, as far as vesicle-mediated protein transport pathways are concerned and that *Y.lipolytica* has retained the complexity of the trafficking system allowing evolution to a multicellular organization. So as has been said for fungi [171], we can say that «*Yarrowia lipolytica* and humans are closer than you think» and that this yeast constitutes an interesting model to study the secretion pathway.

Methods

Strains and growth conditions

Escherichia coli strains DH5alpha (F'*lndA1 hsdR17* ($r_K^- m_K^+$) *supE44 thi-1 recA1 gyrA* (Nal^r) *relA1 Δ(lacIZYA-argF) U169deoR* ($\phi 80dlac\Delta(lacZ)$ M15) was used as host strain for bacterial transformations and plasmid propagation.

The *Yarrowia lipolytica* strain INAG136463 (*MatB, scr1 :: ADE1, SCR2, his-1, leu-2, ura3*) was used for the inactivation of *RAB4*-related gene.

Escherichia coli cells were grown in LB medium (1% bactotryptone, 1% yeast extract, 0.5% NaCl), 100 μ g/ml ampicillin, 37°C. *Yarrowia lipolytica* cells were cultivated either on rich YPD medium (1% yeast extract, 1% bactopectone, 1% glucose), 28°C, or on minimal medium : 0.67% yeast nitrogen base without amino acids (Difco laboratories), 2% glucose as

carbon source, 50mM phosphate buffer pH 6.8, 28°C with amino acids required and 1,25 mg/ml 5'-fluoroorotic acid for *ura3⁻* strain selection.

Gene inactivation

Disruption was performed using the two-step «pop-in/pop-out» method [172]. The disrupted gene was obtained by the deletion of the *BstEII-ClaI* fragment of the *RAB4*-related gene cloned between the *HindIII-KpnI* sites of the p0 vector [173].

DNA techniques

Standard techniques were used according to Sambrook *et al.* [174]. Enzymes were supplied by New England Biolabs. All vectors inserts were checked by sequencing by Genome express (France).

Transformation procedures

The *E.coli* strains were transformed by the method of Chung and Miller [175]. *Y. lipolytica* strain transformations were carried out according to Xuan *et al.* [176].

Sensitivity to SDS and Calcofluor White

Cells of the INAG136463 (wt) and two clones (1, 5) of the deleted *rab4*-related strains were grown in YPD medium. 5 µl droplets of serial dilutions of exponential growing cultures of each strain were inoculated on the surface of YPD plates containing 2.5 µg/ml, 5 µg/ml, 10 µg/ml Calcofluor White (CW) or 0.0075 %, 0.015%, 0.03% sodium dodecyl sulfate (SDS).

FM4-64 staining

For the strains of yeast cells, 3 OD₆₀₀ units of exponential growth in YPD medium (OD₆₀₀ 0.5-1) were resuspended in 150 µl of YPD containing 40 µM FM4-64. Cells were incubated 10 min. at 28°C and washed three times in ice-cold medium. Cells were resuspended in YPD and incubated at 28°C. Aliquots were taken at various times and internalization was stopped

with 10 mM NaN₃ and 10mM NaF. Stained cells were visualized using fluorescence optics [adapted from 159].

Informatic analyses

Hemiascomycetous yeast genome sequences, BLAST searches of vesicular secretion proteins and BLAST results (performed Apr 25, 2003 with 1,093,702 sequences) were obtained from the Génolevures web site [180]. *S.cerevisiae* sequences were collected from *Saccharomyces* Genome Database [181]. BLASTs against protein databases were obtained from NCBI (BLAST with 4,554,902 sequences) [182] and Infobiogen web site [183]. Protein analyses were done with NCBI Conserved Domain Architecture Retrieval Tool [184], ExPASy Proteomics tools [185] and CBS Prediction Servers [186].

A list of proteins implicated in *S.cerevisiae* vesicular secretion was made from literature. These *S.cerevisiae* protein sequences were used for BLAST searches with the Génolevures web site. For protein families such as Rab protein, autoBLAST, which means BLAST of a sequence against its own genome, were made to identify all the members of the family. The protein sequences of the new members were identified by BLAST searches against the NCBI eukaryotic protein sequences.

The percentages of proteins with the greatest homology (Fig.7 and 8) were determined by quantification of the best E-values obtained with the BLAST searches against the NCBI eukaryotic protein sequences.

Abbreviations

Y.lipolytica, *Yl*: *Yarrowia lipolytica*; *C.glabrata*, *Cg*: *Candida glabrata*; *K.lactis*, *Kl*: *Kluyveromyces lactis*; *D.hansenii*, *Dl*: *Debaryomyces hansenii*; *S.cerevisiae*, *Sc*:

Saccharomyces cerevisiae; *N.crassa*, *Nc*: *Neurospora crassa*; SNARE: Soluble N-ethylmaleimide-sensitive factor Attachment protein Receptor.

Authors' contributions

DS conceived the study, carried out the molecular genetic studies, the sequence analyses and drafted the manuscript. JMB participated in the sequence analyses. All authors read and approved the final manuscript.

Acknowledgments

This work was supported by INRA, CNRS and AgroParisTech. We gratefully thank R. Haguenaer-Tsapis and J.-M. Galan from Institut Jacques Monod-CNRS (France) for helpful discussions about membrane protein recycling. We thank C.R. Tinsley for the copyediting of the manuscript.

References

1. Barth G, Gaillardin C: **Physiology and genetics of the dimorphic fungus *Yarrowia lipolytica***. *FEMS Microbiol Rev* 1997, 19: 219-37.
2. Madzak C, Gaillardin C, Beckerich JM: **Heterologous protein expression and secretion in the non-conventional yeast *Yarrowia lipolytica*: a review**. *J Biotechnol* 2004, 109: 63-81.
3. Beckerich JM, Boisramé A, Gaillardin C: ***Yarrowia lipolytica*: a model organism for protein secretion studies**. *Int Microbiol* 1998, 1:123-130.

4. Broughton J, Swennen D, Wilkinson BM, Joyet P, Gaillardin C, Stirling CJ: **Cloning of SEC61 homologues from *Schizosaccharomyces pombe* and *Yarrowia lipolytica* reveals the extent of functional conservation within this core component of the ER translocation machinery.** *J Cell Sci* 1997, 110: 2715-27.
5. Swennen D, Joyet P, Gaillardin C: **Cloning the *Yarrowia lipolytica* homologue of the *Saccharomyces cerevisiae* SEC62 gene.** *Curr Genet* 1997, 31: 128-32.
6. Boisrame A, Kabani M, Beckerich JM, Hartmann E, Gaillardin C: **Interaction of Kar2p and Sls1p is required for efficient co-translational translocation of secreted proteins in the yeast *Yarrowia lipolytica*.** *J Biol Chem* 1998, 273: 30903-8.
7. Kabani M, Beckerich JM, Gaillardin C: **Sls1p stimulates Sec63p-mediated activation of Kar2p in a conformation-dependent manner in the yeast endoplasmic reticulum.** *Mol Cell Biol* 2000, 20: 6923-34.
8. Boisrame A, Chasles M, Babour A, Beckerich JM, Gaillardin C: **Sbh1p, a subunit of the Sec61 translocon, interacts with the chaperone calnexin in the yeast *Yarrowia lipolytica*.** *J Cell Sci* 2002, 115: 4947-56.
9. Babour A, Beckerich JM, Gaillardin C: **Identification of an UDP-Glc:glycoprotein glucosyltransferase in the yeast *Yarrowia lipolytica*.** *Yeast* 2004, 21: 11-24.
10. Barnay-Verdier S, Boisramé A, Beckerich JM: **Identification and characterization of two alpha-1,6-mannosyltransferases, An1p and Och1p, in the yeast *Yarrowia lipolytica*.** *Microbiology* 2004, 150: 2185-95.
11. Dujon B, Sherman D, Fischer G, Durrens P, Casaregola S, Lafontaine I, De Montigny J, Marck C, Neuveglise C, Talla E, Goffard N, Frangeul L, Aigle M, Anthouard V, Babour A, Barbe V, Barnay S, Blanchin S, Beckerich JM, Beyne E, Bleykasten C, Boisrame A, Boyer J, Cattolico L, Confanioleri F, De Daruvar A, Despons L, Fabre E, Fairhead C, Ferry-Dumazet H, Groppi A, Hantraye F,

- Hennequin C, Jauniaux N, Joyet P, Kachouri R, Kerrest A, Koszul R, Lemaire M, Lesur I, Ma L, Muller H, Nicaud JM, Nikolski M, Oztas S, Ozier-Kalogeropoulos O, Pellenz S, Potier S, Richard GF, Straub ML, Suleau A, Swennen D, Tekaiia F, Wesolowski-Louvel M, Westhof E, Wirth B, Zeniou-Meyer M, Zivanovic I, Bolotin-Fukuhara M, Thierry A, Bouchier C, Caudron B, Scarpelli C, Gaillardin C, Weissenbach J, Wincker P, Souciet JL: **Genome evolution in yeasts.** *Nature* 2004, 430: 35-44.
12. Fidel PL Jr, Vazquez JA, Sobel JD: ***Candida glabrata*: review of epidemiology, pathogenesis, and clinical disease with comparison to *Candida. albicans*.** *Clin Microbiol Rev* 1999, 12: 80-96.
13. Schaffrath R, Breunig KD: **Genetics and molecular physiology of the yeast *Kluyveromyces lactis*.** *Fungal Genet Biol* 2000, 30: 173-90.
14. Bolotin-Fukuhara M, Toffano-Nioche C, Artiguenave F, Duchateau-Nguyen G, Lemaire M, Marmeisse R, Montrocher R, Robert C, Termier M, Wincker P, Wesolowski-Louvel M: **Genomic exploration of the hemiascomycetous yeasts: 11. *Kluyveromyces lactis*.** *FEBS Lett* 2000, 487: 66-70.
15. Lepingle A, Casaregola S, Neuveglise C, Bon E, Nguyen H, Artiguenave F, Wincker P, Gaillardin C: **Genomic exploration of the hemiascomycetous yeasts: 14. *Debaryomyces hansenii* var. *hansenii*.** *FEBS Lett* 2000, 487: 82-6.
16. van der Sluijs P, Hull M, Webster P, Male P, Goud B, Mellman I: **The small GTP-binding protein rab4 controls an early sorting event on the endocytic pathway.** *Cell* 1992, 70: 729-40.
17. Gupta GD, Brent Heath I: **Predicting the distribution, conservation, and functions of SNAREs and related proteins in fungi.** *Fungal Genet Biol* 2002, 36: 1-21.

18. Bonifacino JS, Glick BS: **The mechanisms of vesicle budding and fusion.** *Cell* 2004, 116: 153-66.
19. Robinson MS: **Adaptable adaptors for coated vesicles.** *Trends Cell Biol* 2004, 14: 167-74.
20. Mancias JD, Goldberg J: **Exiting the endoplasmic reticulum.** *Traffic* 2005, 6: 278-85.
21. Tang BL, Wang Y, Ong YS, Hong W: **COPII and exit from the endoplasmic reticulum.** *Biochim Biophys Acta* 2005, 1744: 293-303.
22. Watson P, Stephens DJ: **ER-to-Golgi transport: form and formation of vesicular and tubular carriers.** *Biochim Biophys Acta* 2005, 1744: 304-15.
23. Gurkan C, Stagg SM, Lapointe P, Balch WE: **The COPII cage: unifying principles of vesicle coat assembly.** *Nat Rev Mol Cell Biol* 2006, 7: 727-38.
24. Barlowe C, Orci L, Yeung T, Hosobuchi M, Hamamoto S, Salama N, Rexach MF, Ravazzola M, Amherdt M, Schekman R: **COPII: a membrane coat formed by Sec proteins that drive vesicle budding from the endoplasmic reticulum.** *Cell* 1994, 77: 895-907.
25. Letourneur F, Gaynor EC, Hennecke S, Demolliere C, Duden R, Emr SD, Riezman H, Cosson P: **Coatomer is essential for retrieval of dilysine-tagged proteins to the endoplasmic reticulum.** *Cell* 1994, 79: 1199-207.
26. Gabriely G, Kama R, Gerst JE: **Involvement of specific COPI subunits in protein sorting from the late endosome to the vacuole in yeast.** *Mol Cell Biol* 2007, 27: 526-40.
27. Barlowe C, Schekman R: **SEC12 encodes a guanine-nucleotide-exchange factor essential for transport vesicle budding from the ER.** *Nature* 1993, 365: 347-9.

28. Futai E, Hamamoto S, Orci L, Schekman R: **GTP/GDP exchange by Sec12p enables COPII vesicle bud formation on synthetic liposomes.** *EMBO J* 2004, 23: 4146-55.
29. Lee MC, Orci L, Hamamoto S, Futai E, Ravazzola M, Schekman R: **Sar1p N-terminal helix initiates membrane curvature and completes the fission of a COPII vesicle.** *Cell* 2005, 122: 605-17.
30. Bielli A, Haney CJ, Gabreski G, Watkins SC, Bannykh SI, Aridor M: **Regulation of Sar1 NH2 terminus by GTP binding and hydrolysis promotes membrane deformation to control COPII vesicle fission.** *J Cell Biol* 2005, 171: 919-24.
31. Stagg SM, Gurkan C, Fowler DM, LaPointe P, Foss TR, Potter CS, Carragher B, Balch WE: **Structure of the Sec13/31 COPII coat cage.** *Nature* 2006, 439: 234-8.
32. Supek F, Madden DT, Hamamoto S, Orci L, Schekman R: **Sec16p potentiates the action of COPII proteins to bud transport vesicles.** *J Cell Biol* 2002, 158: 1029-38.
33. Sato K, Nakano A: **Dissection of COPII subunit-cargo assembly and disassembly kinetics during Sar1p-GTP hydrolysis.** *Nat Struct Mol Biol* 2005, 12: 167-74.
34. Donaldson JG, Honda A, Weigert R: **Multiple activities for Arf1 at the Golgi complex.** *Biochim Biophys Acta* 2005, 1744: 364-73.
35. D'Souza-Schorey C, Chavrier P: **ARF proteins: roles in membrane traffic and beyond.** *Nat Rev Mol Cell Biol* 2006, 7: 347-58.
36. Lippincott-Schwartz J, Liu W: **Insights into COPI coat assembly and function in living cells.** *Trends Cell Biol* 2006, 16: e1-4.
37. Bowers K, Stevens TH: **Protein transport from the late Golgi to the vacuole in the yeast *Saccharomyces cerevisiae*.** *Biochim Biophys Acta* 2005, 1744: 438-54.

38. Yeung BG, Phan HL, Payne GS: **Adaptor complex-independent clathrin function in yeast.** *Mol Biol Cell* 1999, 10: 3643-59.
39. Valdivia RH, Baggott D, Chuang JS, Schekman RW: **The yeast clathrin adaptor protein complex 1 is required for the efficient retention of a subset of late Golgi membrane proteins.** *Dev Cell* 2002, 2: 283-94.
40. Phelan JP, Millson SH, Parker PJ, Piper PW, Cooke FT: **Fab1p and AP-1 are required for trafficking of endogenously ubiquitylated cargoes to the vacuole lumen in *S. cerevisiae*.** *J Cell Sci* 2006, 119: 4225-34.
41. Yeung BG, Payne GS: **Clathrin interactions with C-terminal regions of the yeast AP-1 beta and gamma subunits are important for AP-1 association with clathrin-coats.** *Traffic* 2001, 2: 565-76.
42. Vowels JJ, Payne GS: **A dileucine-like sorting signal directs transport into an AP-3-dependent, clathrin-independent pathway to the yeast vacuole.** *EMBO J* 1998, 17: 2482-93.
43. Scott PM, Bilodeau PS, Zhdankina O, Winistorfer SC, Hauglund MJ, Allaman MM, Kearney WR, Robertson AD, Boman AL, Piper RC: **GGA proteins bind ubiquitin to facilitate sorting at the trans-Golgi network.** *Nat Cell Biol* 2004, 6: 252-9.
44. Nakayama K, Takatsu H: **Analysis of Arf interaction with GGAs in vitro and in vivo.** *Methods Enzymol* 2005, 404: 367-77.
45. Boehm M, Bonifacino JS: **Adaptins: the final recount.** *Mol Biol Cell* 2001, 12: 2907-20.
46. Ha SA, Torabinejad J, DeWald DB, Wenk MR, Lucast L, De Camilli P, Newitt RA, Aebersold R, Nothwehr SF: **The synaptojanin-like protein Inp53/Sjl3 functions with clathrin in a yeast TGN-to-endosome pathway distinct from the GGA protein-dependent pathway.** *Mol Biol Cell* 2003, 14: 1319-33.

47. Worby CA, Dixon JE: **Sorting out the cellular functions of sorting nexins.** *Nat Rev Mol Cell Biol* 2002, 3: 919-31.
48. Carlton J, Bujny M, Rutherford A, Cullen P: **Sorting nexins - unifying trends and new perspectives.** *Traffic* 2005, 6: 75-82.
49. Seaman MN: **Recycle your receptors with retromer.** *Trends Cell Biol* 2005, 15: 68-75.
50. Hettema EH, Lewis MJ, Black MW, Pelham HR: **Retromer and the sorting nexins Snx4/41/42 mediate distinct retrieval pathways from yeast endosomes.** *EMBO J* 2003, 22: 548-57.
51. Seaman MN, McCaffery JM, Emr SD: **A membrane coat complex essential for endosome-to-Golgi retrograde transport in yeast.** *J Cell Biol* 1998, 142: 665-81.
52. Shi H, Rojas R, Bonifacino JS, Hurley JH: **The retromer subunit Vps26 has an arrestin fold and binds Vps35 through its C-terminal domain.** *Nat Struct Mol Biol* 2006, 13: 540-8.
53. Pereira-Leal JB, Seabra MC: **The mammalian Rab family of small GTPases: definition of family and subfamily sequence motifs suggests a mechanism for functional specificity in the Ras superfamily.** *J Mol Biol* 2000, 301: 1077-87.
54. Pereira-Leal JB, Seabra MC: **Evolution of the Rab family of small GTP-binding proteins.** *J Mol Biol* 2001, 313: 889-901.
55. Buvelot Frei S, Rahl PB, Nussbaum M, Briggs BJ, Calero M, Janeczko S, Regan AD, Chen CZ, Barral Y, Whittaker GR, Collins RN: **Bioinformatic and comparative localization of Rab proteins reveals functional insights into the uncharacterized GTPases Ypt10p and Ypt11p.** *Mol Cell Biol* 2006, 26: 7299-317.
56. Borkovich KA, Alex LA, Yarden O, Freitag M, Turner GE, Read ND, Seiler S, Bell-Pedersen D, Paietta J, Plesofsky N, Plamann M, Goodrich-Tanrikulu M, Schulte U,

Mannhaupt G, Nargang FE, Radford A, Selitrennikoff C, Galagan JE, Dunlap JC, Loros JJ, Catcheside D, Inoue H, Aramayo R, Polymenis M, Selker EU, Sachs MS, Marzluf GA, Paulsen I, Davis R, Ebbole DJ, Zelter A, Kalkman ER, O'Rourke R, Bowring F, Yeadon J, Ishii C, Suzuki K, Sakai W, Pratt R: **Lessons from the genome sequence of *N.crassa*: tracing the path from genomic blueprint to multicellular organism.** *Microbiol Mol Biol Rev* 2004, 68: 1-108.

57. Tisdale EJ: **A Rab2 mutant with impaired GTPase activity stimulates vesicle formation from pre-Golgi intermediates.** *Mol Biol Cell* 1999, 10: 1837-49.
58. Jones MC, Caswell PT, Norman JC: **Endocytic recycling pathways: emerging regulators of cell migration.** *Curr Opin Cell Biol* 2006, 18: 549-57.
59. Hurtado CA, Beckerich JM, Gaillardin C, Rachubinski RA: **A rac homolog is required for induction of hyphal growth in the dimorphic yeast *Yarrowia lipolytica*.** *J Bacteriol* 2000, 182: 2376-86.
60. Coca MA, Damsz B, Yun DJ, Hasegawa PM, Bressan RA, Narasimhan ML: **Heterotrimeric G-proteins of a filamentous fungus regulate cell wall composition and susceptibility to a plant PR-5 protein.** *Plant J* 2000, 22: 61-9.
61. Segev N: **Ypt/rab gtpases: regulators of protein trafficking.** *Sci STKE* 2001, 2001: RE11.
62. Seabra MC, Wasmeier C: **Controlling the location and activation of Rab GTPases.** *Curr Opin Cell Biol* 2004, 16: 451-7.
63. Grosshans BL, Ortiz D, Novick P: **Rabs and their effectors: achieving specificity in membrane traffic.** *Proc Natl Acad Sci U S A* 2006, 103: 11821-7.
64. Markgraf DF, Peplowska K, Ungermann C: **Rab cascades and tethering factors in the endomembrane system.** *FEBS Lett* 2007, 581: 2125-30.

65. Calero M, Chen CZ, Zhu W, Winand N, Havas KA, Gilbert PM, Burd CG, Collins RN: **Dual prenylation is required for Rab protein localization and function.** *Mol Biol Cell* 2003, 14: 1852-67.
66. Leung KF, Baron R, Ali BR, Magee AI, Seabra MC: **Rab GTPases containing a CAAX motif are processed post-geranylgeranylation by proteolysis and methylation.** *J Biol Chem* 2007, 282: 1487-97.
67. Garrett MD, Zahner JE, Cheney CM, Novick PJ: **GDI1 encodes a GDP dissociation inhibitor that plays an essential role in the yeast secretory pathway.** *EMBO J* 1994, 13: 1718-28.
68. Sivars U, Aivazian D, Pfeffer SR: **Yip3 catalyses the dissociation of endosomal Rab-GDI complexes.** *Nature* 2003, 425: 856-9.
69. Chen CZ, Collins RN: **Analysis and properties of the yeast YIP1 family of Ypt-interacting proteins.** *Methods Enzymol* 2005, 403: 333-9.
70. Yang X, Matern HT, Gallwitz D: **Specific binding to a novel and essential Golgi membrane protein (Yip1p) functionally links the transport GTPases Ypt1p and Ypt31p.** *EMBO J* 1998, 17: 4954-63.
71. Matern H, Yang X, Andrulis E, Sternglanz R, Trepte HH, Gallwitz D: **A novel Golgi membrane protein is part of a GTPase-binding protein complex involved in vesicle targeting.** *EMBO J* 2000, 19: 4485-92.
72. Barrowman J, Wang W, Zhang Y, Ferro-Novick S. 2003. **The Yip1p.Yif1p complex is required for the fusion competence of endoplasmic reticulum-derived vesicles.** *J Biol Chem* 2003, 278: 19878-84.
73. Heidtman M, Chen CZ, Collins RN, Barlowe C: **Yos1p is a novel subunit of the Yip1p-Yif1p complex and is required for transport between the endoplasmic reticulum and the Golgi complex.** *Mol Biol Cell* 2005, 16: 1673-83.

74. Ortiz D, Medkova M, Walch-Solimena C, Novick P: **Ypt32 recruits the Sec4p guanine nucleotide exchange factor, Sec2p, to secretory vesicles; evidence for a Rab cascade in yeast.** *J Cell Biol* 2002, 157: 1005-15.
75. Wang W, Ferro-Novick S: **A Ypt32p exchange factor is a putative effector of Ypt1p.** *Mol Biol Cell* 2002; 13: 3336-43.
76. Sacher M, Barrowman J, Wang W, Horecka J, Zhang Y, Pypaert M, Ferro-Novick S: **TRAPP I implicated in the specificity of tethering in ER-to-Golgi transport.** *Mol Cell* 2001, 7: 433-42.
77. Jones S, Newman C, Liu F, Segev N: **The TRAPP complex is a nucleotide exchanger for Ypt1 and Ypt31/32.** *Mol Biol Cell* 2000, 11: 4403-11.
78. Morozova N, Liang Y, Tokarev AA, Chen SH, Cox R, Andrejic J, Lipatova Z, Sciorra VA, Emr SD, Segev N: **TRAPP II subunits are required for the specificity switch of a Ypt-Rab GEF.** *Nat Cell Biol* 2006, 8: 1263-9.
79. Sato Y, Shirakawa R, Horiuchi H, Dohmae N, Fukai S, Nureki O: **Asymmetric Coiled-Coil Structure with Guanine Nucleotide Exchange Activity.** *Structure* 2007, 15: 245-252.
80. Dong G, Medkova M, Novick P, Reinisch KM: **A catalytic coiled coil: structural insights into the activation of the Rab GTPase Sec4p by Sec2p.** *Mol Cell* 2007, 25: 455-62.
81. Itzen A, Rak A, Goody RS: **Sec2 is a highly efficient exchange factor for the Rab protein Sec4.** *J Mol Biol* 2007, 365: 1359-67.
82. Walch-Solimena C, Collins RN, Novick PJ: **Sec2p mediates nucleotide exchange on Sec4p and is involved in polarized delivery of post-Golgi vesicles.** *J Cell Biol* 1997, 137: 1495-509.

83. Novick P, Medkova M, Dong G, Hutagalung A, Reinisch K, Grosshans B: **Interactions between Rabs, tethers, SNAREs and their regulators in exocytosis.** *Biochem Soc Trans* 2006, 34: 683-6.
84. Medkova M, France YE, Coleman J, Novick P: **The rab exchange factor Sec2p reversibly associates with the exocyst.** *Mol Biol Cell* 2006, 17: 2757-69.
85. Hama H, Tall GG, Horazdovsky BF: **Vps9p is a guanine nucleotide exchange factor involved in vesicle-mediated vacuolar protein transport.** *J Biol Chem* 1999, 274: 15284-91.
86. Siniossoglou S, Peak-Chew SY, Pelham HR: **Ric1p and Rgp1p form a complex that catalyses nucleotide exchange on Ypt6p.** *EMBO J* 2000, 19: 4885-94.
87. Wurmser AE, Sato TK, Emr SD: **New component of the vacuolar class C-Vps complex couples nucleotide exchange on the Ypt7 GTPase to SNARE-dependent docking and fusion.** *J Cell Biol* 2000, 151: 551-62.
88. Du LL, Collins RN, Novick PJ: **Identification of a Sec4p GTPase-activating protein (GAP) as a novel member of a Rab GAP family.** *J Biol Chem* 1998, 273: 3253-6.
89. Albert S, Gallwitz D: **Two new members of a family of Ypt/Rab GTPase activating proteins. Promiscuity of substrate recognition.** *J Biol Chem* 1999, 274: 33186-9.
90. De Antoni A, Schmitzova J, Trepte HH, Gallwitz D, Albert S: **Significance of GTP hydrolysis in Ypt1p-regulated endoplasmic reticulum to Golgi transport revealed by the analysis of two novel Ypt1-GAPs.** *J Biol Chem* 2002, 277: 41023-31.

91. Chesneau L, Dupre S, Burdina A, Roger J, Le Panse S, Jacquet M, Cuif MH: **Gyp5p and Gyl1p are involved in the control of polarized exocytosis in budding yeast.** *J Cell Sci* 2004, 117: 4757-67.
92. Whyte JR, Munro S: **Vesicle tethering complexes in membrane traffic.** *J Cell Sci* 2002, 115: 2627-37.
93. Lupashin V, Sztul E: Golgi tethering factors. *Biochim Biophys Acta* 2005, 1744: 325-39.
94. Sztul E, Lupashin V: **Role of tethering factors in secretory membrane traffic.** *Am J Physiol Cell Physiol* 2006, 290: C11-26.
95. Cai H, Yu S, Menon S, Cai Y, Lazarova D, Fu C, Reinisch K, Hay JC, Ferro-Novick S: **TRAPPI tethers COPII vesicles by binding the coat subunit Sec23.** *Nature* 2007, 445: 941-4.
96. Kim YG, Sohn EJ, Seo J, Lee KJ, Lee HS, Hwang I, Whiteway M, Sacher M, Oh BH: **Crystal structure of bet3 reveals a novel mechanism for Golgi localization of tethering factor TRAPP.** *Nat Struct Mol Biol* 2005, 12: 38-45.
97. Turnbull AP, Kummel D, Prinz B, Holz C, Schultchen J, Lang C, Niesen FH, Hofmann KP, Delbruck H, Behlke J, Muller EC, Jarosch E, Sommer T, Heinemann U: **Structure of palmitoylated BET3: insights into TRAPP complex assembly and membrane localization.** *EMBO J* 2005, 24: 875-84.
98. Kim MS, Yi MJ, Lee KH, Wagner J, Munger C, Kim YG, Whiteway M, Cygler M, Oh BH, Sacher M: **Biochemical and crystallographic studies reveal a specific interaction between TRAPP subunits Trs33p and Bet3p.** *Traffic* 2005, 6: 1183-95.

99. Yu S, Satoh A, Pypaert M, Mullen K, Hay JC, Ferro-Novick S: **mBet3p is required for homotypic COPII vesicle tethering in mammalian cells.** *J Cell Biol* 2006, 174: 359-68.
100. Cai H, Zhang Y, Pypaert M, Walker L, Ferro-Novick S: **Mutants in trs120 disrupt traffic from the early endosome to the late Golgi.** *J Cell Biol* 2005, 171: 823-33.
101. Cox R, Chen SH, Yoo E, Segev N: **Conservation of the TRAPP-II-specific subunits of a Ypt/Rab exchanger complex.** *BMC Evol Biol* 2007, 7: 12.
102. Watanabe R, Riezman H: **Differential ER exit in yeast and mammalian cells.** *Curr Opin Cell Biol* 2004, 16: 350-5.
103. Ungar D, Oka T, Krieger M, Hughson FM: **Retrograde transport on the COG railway.** *Trends Cell Biol* 2006, 16: 113-20.
104. Ungar D, Oka T, Brittle EE, Vasile E, Lupashin VV, Chatterton JE, Heuser JE, Krieger M, Waters MG: **Characterization of a mammalian Golgi-localized protein complex, COG, that is required for normal Golgi morphology and function.** *J Cell Biol* 2002, 157: 405-15.
105. Andag U, Schmitt HD: **Dsl1p, an essential component of the Golgi-endoplasmic reticulum retrieval system in yeast, uses the same sequence motif to interact with different subunits of the COPI vesicle coat.** *J Biol Chem* 2003, 278: 51722-34.
106. Kraynack BA, Chan A, Rosenthal E, Essid M, Umansky B, Waters MG, Schmitt HD: **Dsl1p, Tip20p, and the novel Dsl3(Sec39) protein are required for the stability of the Q/t-SNARE complex at the endoplasmic reticulum in yeast.** *Mol Biol Cell* 2005, 16: 3963-77.
107. Combet C, Blanchet C, Geourjon C, Deleage G: **NPS@: network protein sequence analysis.** *Trends Biochem Sci* 2000, 25: 147-50.

108. Sacher M, Barrowman J, Schieltz D, Yates JR 3rd, Ferro-Novick S: **Identification and characterization of five new subunits of TRAPP.** *Eur J Cell Biol* 2000, 79: 71-80.
109. Bruinsma P, Spelbrink RG, Nothwehr SF: **Retrograde transport of the mannosyltransferase Och1p to the early Golgi requires a component of the COG transport complex.** *J Biol Chem* 2004, 279: 39814-23.
110. Conibear E, Stevens TH: **Vps52p, Vps53p, and Vps54p form a novel multisubunit complex required for protein sorting at the yeast late Golgi.** *Mol Biol Cell* 2000, 11: 305-23.
111. Conboy MJ, Cyert MS: **Luv1p/Rki1p/Tcs3p/Vps54p, a yeast protein that localizes to the late Golgi and early endosome, is required for normal vacuolar morphology.** *Mol Biol Cell* 2000, 11: 2429-43.
112. Siniosoglou S, Pelham HR: **Vps51p links the VFT complex to the SNARE Tlg1p.** *J Biol Chem* 2002, 277: 48318-24.
113. Conibear E, Cleck JN, Stevens TH: **Vps51p mediates the association of the GARP (Vps52/53/54) complex with the late Golgi t-SNARE Tlg1p.** *Mol Biol Cell* 2003, 14: 1610-23.
114. Liewen H, Meinhold-Heerlein I, Oliveira V, Schwarzenbacher R, Luo G, Wadle A, Jung M, Pfreundschuh M, Stenner-Liewen F: **Characterization of the human GARP (Golgi associated retrograde protein) complex.** *Exp Cell Res* 2005, 306: 24-34.
115. Fridmann-Sirkis Y, Kent HM, Lewis MJ, Evans PR, Pelham HR: **Structural analysis of the interaction between the SNARE Tlg1 and Vps51.** *Traffic* 2006, 7: 182-90.

116. Barr FA, Short B: **Golgins in the structure and dynamics of the Golgi apparatus.** *Curr Opin Cell Biol* 2003, 15: 405-13.
117. Short B, Haas A, Barr FA: **Golgins and GTPases, giving identity and structure to the Golgi apparatus.** *Biochim Biophys Acta* 2005, 1744: 383-95.
118. Norman TC, Smith DL, Sorger PK, Drees BL, O'Rourke SM, Hughes TR, Roberts CJ, Friend SH, Fields S, Murray AW: **Genetic selection of peptide inhibitors of biological pathways.** *Science* 1999, 285: 591-5.
119. Setty SR, Shin ME, Yoshino A, Marks MS, Burd CG: **Golgi recruitment of GRIP domain proteins by Arf-like GTPase 1 is regulated by Arf-like GTPase 3.** *Curr Biol* 2003, 13: 401-4.
120. Panic B, Whyte JR, Munro S: **The ARF-like GTPases Arl1p and Arl3p act in a pathway that interacts with vesicle-tethering factors at the Golgi apparatus.** *Curr Biol* 2003, 13: 405-10.
121. Behnia R, Panic B, Whyte JR, Munro S: **Targeting of the Arf-like GTPase Arl3p to the Golgi requires N-terminal acetylation and the membrane protein Sys1p.** *Nat Cell Biol* 2004, 6: 405-13.
122. Burd CG, Strohlic TI, Gangi Setty SR: **Arf-like GTPases: not so Arf-like after all.** *Trends Cell Biol* 2004, 14: 687-94.
123. Gillingham AK, Pfeifer AC, Munro S: **CASP, the alternatively spliced product of the gene encoding the CCAAT-displacement protein transcription factor, is a Golgi membrane protein related to giantin.** *Mol Biol Cell* 2002, 13: 3761-74.
124. Kim DW: **Characterization of Grp1p, a novel cis-Golgi matrix protein.** *Biochem Biophys Res Commun* 2003, 303: 370-8.
125. Jahn R, Lang T, Sudhof TC: **Membrane fusion.** *Cell* 2003, 112: 519-33.

126. Subramanian S, Woolford CA, Jones EW: **The Sec1/Munc18 protein, Vps33p, functions at the endosome and the vacuole of *Saccharomyces cerevisiae*.** *Mol Biol Cell* 2004, 15: 2593-605.
127. Stroupe C, Collins KM, Fratti RA, Wickner W: **Purification of active HOPS complex reveals its affinities for phosphoinositides and the SNARE Vam7p.** *EMBO J* 2006, 25: 1579-89.
128. Guo W, Roth D, Walch-Solimena C, Novick P: **The exocyst is an effector for Sec4p, targeting secretory vesicles to sites of exocytosis.** *EMBO J* 1999, 18: 1071-80.
129. Finger FP, Hughes TE, Novick P: **Sec3p is a spatial landmark for polarized secretion in budding yeast.** *Cell* 1998, 92: 559-71.
130. Guo W, Tamanoi F, Novick P: **Spatial regulation of the exocyst complex by Rho1 GTPase.** *Nat Cell Biol* 2001, 3: 353-60.
131. Zhang X, Bi E, Novick P, Du L, Kozminski KG, Lipschutz JH, Guo W: **Cdc42 interacts with the exocyst and regulates polarized secretion.** *J Biol Chem* 2001, 276: 46745-50.
132. Adamo JE, Rossi G, Brennwald P: **The Rho GTPase Rho3 has a direct role in exocytosis that is distinct from its role in actin polarity.** *Mol Biol Cell* 1999, 10: 4121-33.
133. Robinson NG, Guo L, Imai J, Toh-E A, Matsui Y, Tamanoi F: **Rho3 of *Saccharomyces cerevisiae*, which regulates the actin cytoskeleton and exocytosis, is a GTPase which interacts with Myo2 and Exo70.** *Mol Cell Biol* 1999, 19: 3580-7.
134. Hamburger ZA, Hamburger AE, West AP Jr, Weis WI: **Crystal structure of the *S.cerevisiae* exocyst component Exo70p.** *J Mol Biol* 2006, 356: 9-21.

135. Boyd C, Hughes T, Pypaert M, Novick P: **Vesicles carry most exocyst subunits to exocytic sites marked by the remaining two subunits, Sec3p and Exo70p.** *J Cell Biol* 2004, 167: 889-901.
136. Sivaram MV, Saporita JA, Furgason ML, Boettcher AJ, Munson M: **Dimerization of the exocyst protein Sec6p and its interaction with the t-SNARE Sec9p.** *Biochemistry* 2005, 44: 6302-11.
137. Zajac A, Sun X, Zhang J, Guo W: **Cyclical regulation of the exocyst and cell polarity determinants for polarized cell growth.** *Mol Biol Cell* 2005, 16: 1500-12.
138. France YE, Boyd C, Coleman J, Novick PJ: **The polarity-establishment component Bem1p interacts with the exocyst complex through the Sec15p subunit.** *J Cell Sci* 2006, 119: 876-88.
139. Burri L, Lithgow T: **A complete set of SNAREs in yeast.** *Traffic* 2004, 5: 45-52.
140. Ungar D, Hughson FM: **SNARE protein structure and function.** *Annu Rev Cell Dev Biol* 2003, 19: 493-517.
141. Hong W: **SNAREs and traffic.** *Biochim Biophys Acta* 2005, 1744: 493-517.
142. Neiman AM: **Prospore membrane formation defines a developmentally regulated branch of the secretory pathway in yeast.** *J Cell Biol* 1998, 140: 29-37.
143. Neiman AM, Katz L, Brennwald PJ: **Identification of domains required for developmentally regulated SNARE function in *Saccharomyces cerevisiae*.** *Genetics* 2000, 155: 1643-55.
144. Darsow T, Rieder SE, Emr SD: **A multispecificity syntaxin homologue, Vam3p, essential for autophagic and biosynthetic protein transport to the vacuole.** *J Cell Biol* 1997, 138: 517-29.
145. Oyen M, Jantti J, Keranen S, Ronne H: **Mapping of sporulation-specific functions in the yeast syntaxin gene SSO1.** *Curr Genet* 2004, 45: 76-82.

146. Toikkanen JH, Sundqvist L, Keranen S: ***Kluyveromyces lactis* SSO1 and SEB1 genes are functional in *Saccharomyces cerevisiae* and enhance production of secreted proteins when overexpressed.** *Yeast* 2004, 21: 1045-55.
147. Toonen RF, Verhage M: **Vesicle trafficking: pleasure and pain from SM genes.** *Trends Cell Biol* 2003, 13: 177-86.
148. Li Y, Gallwitz D, Peng R: **Structure-based functional analysis reveals a role for the SM protein Sly1p in retrograde transport to the endoplasmic reticulum.** *Mol Biol Cell* 2005, 16: 3951-62.
149. Peng R, Gallwitz D: **Multiple SNARE interactions of an SM protein: Sed5p/Sly1p binding is dispensable for transport.** *EMBO J* 2004, 23: 3939-49.
150. Castillo-Flores A, Weinberger A, Robinson M, Gerst JE: **Mso1 is a novel component of the yeast exocytic SNARE complex.** *J Biol Chem* 2005, 280: 34033-41.
151. Knop M, Miller KJ, Mazza M, Feng D, Weber M, Keranen S, Jantti J: **Molecular interactions position Mso1p, a novel PTB domain homologue, in the interface of the exocyst complex and the exocytic SNARE machinery in yeast.** *Mol Biol Cell* 2005, 16: 4543-56.
152. Marash M, Gerst JE: **t-SNARE dephosphorylation promotes SNARE assembly and exocytosis in yeast.** *EMBO J* 2001, 20: 411-21.
153. Gurunathan S, Marash M, Weinberger A, Gerst JE: **t-SNARE phosphorylation regulates endocytosis in yeast.** *Mol Biol Cell* 2002, 13: 1594-607.
154. Weinberger A, Kamena F, Kama R, Spang A, Gerst JE: **Control of Golgi morphology and function by Sed5 t-SNARE phosphorylation.** *Mol Biol Cell* 2005, 16: 4918-30.

155. Marash M, Gerst JE: **Phosphorylation of the autoinhibitory domain of the Sso t-SNAREs promotes binding of the Vsm1 SNARE regulator in yeast.** *Mol Biol Cell* 2003, 14: 3114-25.
156. Sollner T, Bennett MK, Whiteheart SW, Scheller RH, Rothman JE: **A protein assembly-disassembly pathway in vitro that may correspond to sequential steps of synaptic vesicle docking, activation, and fusion.** *Cell* 1993, 75: 409-18.
157. Steel GJ, Laude AJ, Boojawan A, Harvey DJ, Morgan A: **Biochemical analysis of the *Saccharomyces cerevisiae* SEC18 gene product: implications for the molecular mechanism of membrane fusion.** *Biochemistry* 1999, 38: 7764-72.
158. Collins KM, Thorngren NL, Fratti RA, Wickner WT: **Sec17p and HOPS, in distinct SNARE complexes, mediate SNARE complex disruption or assembly for fusion.** *EMBO J* 2005, 24: 1775-86.
159. Wiederkehr A, Avaro S, Prescianotto-Baschong C, Haguenaue-Tsapis R, Riezman H: **The F-box protein Rcy1p is involved in endocytic membrane traffic and recycling out of an early endosome in *Saccharomyces cerevisiae*.** *J Cell Biol* 2000, 149: 397-410.
160. Galan JM, Wiederkehr A, Seol JH, Haguenaue-Tsapis R, Deshaies RJ, Riezman H, Peter M: **Skp1p and the F-box protein Rcy1p form a non-SCF complex involved in recycling of the SNARE Snc1p in yeast.** *Mol Cell Biol* 2001, 21: 3105-17.
161. Lafourcade C, Galan JM, Peter M: **Opposite roles of the F-box protein Rcy1p and the GTPase-activating protein Gyp2p during recycling of internalized proteins in yeast.** *Genetics* 2003, 164: 469-77.
162. Lafourcade C, Galan JM, Gloor Y, Haguenaue-Tsapis R, Peter M: **The GTPase-activating enzyme Gyp1p is required for recycling of internalized membrane**

- material by inactivation of the Rab/Ypt GTPase Ypt1p.** *Mol Cell Biol* 2004, 24: 3815-26.
163. Robinson M, Poon PP, Schindler C, Murray LE, Kama R, Gabriely G, Singer RA, Spang A, Johnston GC, Gerst JE: **The Gcs1 Arf-GAP mediates Snc1,2 v-SNARE retrieval to the Golgi in yeast.** *Mol Biol Cell* 2006, 17: 1845-58.
164. Chen SH, Chen S, Tokarev AA, Liu F, Jedd G, Segev N: **Ypt31/32 GTPases and their novel F-box effector protein Rcy1 regulate protein recycling.** *Mol Biol Cell* 2005, 16: 178-92.
165. Hermand D, Bamps S, Tafforeau L, Vandenhoute J, Makela TP: **Skp1 and the F-box protein Pof6 are essential for cell separation in fission yeast.** *J Biol Chem* 2003, 278: 9671-7.
166. Wang H, Tang X, Liu J, Trautmann S, Balasundaram D, McCollum D, Balasubramanian MK: **The multiprotein exocyst complex is essential for cell separation in *Schizosaccharomyces pombe*.** *Mol Biol Cell* 2002, 13: 515-29.
167. Boisrame A, Beckerich JM, Gaillardin C: **A mutation in the secretion pathway of the yeast *Yarrowia lipolytica* that displays synthetic lethality in combination with a mutation affecting the signal recognition particle.** *Mol Gen Genet* 1999, 261: 601-9.
168. Butinar L, Santos S, Spencer-Martins I, Oren A, Gunde-Cimerman N: **Yeast diversity in hypersaline habitats.** *FEMS Microbiol Lett* 2005, 244: 229-34.
169. Koumandou VL, Dacks JB, Coulson RM, Field MC: **Control systems for membrane fusion in the ancestral eukaryote; evolution of tethering complexes and SM proteins.** *BMC Evol Biol* 2007, 7: 29.

170. Hall BS, Pal A, Goulding D, Acosta-Serrano A, Field MC: ***Trypanosoma brucei*: TbRAB4 regulates membrane recycling and expression of surface proteins in procyclic forms.** *Exp Parasitol* 2005, 111: 160-71.
171. Zeng Q, Morales AJ, Cottarel G: **Fungi and humans: closer than you think.** *Trends Genet* 2001, 17: 682-684.
172. Rothstein R: **One-step gene disruption in yeast.** *Methods Enzymol* 1983, 101, 202–211.
173. Swennen D, Paul MF, Vernis L, Beckerich JM, Fournier A, Gaillardin C: **Secretion of active anti-Ras single-chain Fv antibody by the yeasts *Yarrowia lipolytica* and *Kluyveromyces lactis*.** *Microbiology* 2002, 148: 41-50.
174. Sambrook J, Fritsch EF, Maniatis T: **Molecular Cloning: a Laboratory Manual**, 2nd edn. Cold Spring Harbor, NY: Cold Spring Harbor Laboratory; 1989.
175. Chung, C. T. and Miller, R. H: **A rapid and convenient method for the preparation and storage of competent bacterial cells.** *Nucleic Acids Res* 1988, 16: 3580.
176. Xuan JW, Fournier P, Declerck N, Chasles M, Gaillardin C: **Overlapping reading frames at the LYS5 locus in the yeast *Yarrowia lipolytica*.** *Mol Cell Biol* 1990, 10: 4795-4806.
177. Thompson JD, Gibson TJ, Plewniak F, Jeanmougin F, Higgins DG: **The ClustalX windows interface: flexible strategies for multiple sequence alignment aided by quality analysis tools.** *Nucleic Acids Res* 1997, 24: 4876-4882.
178. Page RDM: **TREEVIEW: An application to display phylogenetic trees on personal computers.** *Computer Applications in the Biosciences* 1996, 12: 357-358.
179. Nicholas KB, Nicholas HB Jr. **GeneDoc: a tool for editing and annotating multiple sequence alignments.** Distributed by the author.

180. **Genolevures web site** [<http://cbl.labri.fr/Genolevures/>]
181. **Saccharomyces Genome Database** [<http://www.yeastgenome.org/>]
182. **NCBI BLAST** [<http://www.ncbi.nlm.nih.gov/BLAST/>]
183. **Infobiogen** [<http://www.infobiogen.fr/>]
184. **NCBI Conserved Domain Architecture Retrieval Tool**
[<http://www.ncbi.nlm.nih.gov/Structure/lexington/lexington.cgi?cmd=rps>]
185. **ExPASy Proteomics tools** [<http://www.expasy.ch/tools/>]
186. **CBS Prediction Servers** [<http://www.cbs.dtu.dk/services/>]

Figures

Figure 1 - Phylogenetic tree of some human Rabp, *S.cerevisiae* and *Y.lipolytica* Ytp.

“]” indicates when *Y.lipolytica* protein sequences are closer to human ones. The tree was obtained with ClustalX program, 1.81 version [177] and presented with Treeview program, 1.6.6 version [178].

Figure 2 - Ypt4p/Rab4p protein sequences alignment.

The figure shows the upper quartile, for the full image, see Additional file 4.

Mus musculus (Mm), *Rattus norvegicus* (Rn), *Homo sapiens* (Hs), *Drosophila melanogaster* (Dm), *Neurospora crassa* (Nc), *Schizosaccharomyces pombe* (Sp) and *Yarrowia lipolytica* (Yl) Ypt4/Rab4 protein sequences alignment was obtained with ClustalX program, 1.81 version [177] and presented with GeneDoc program, 2.6.002 version [179].

Figure 3 - Colony morphology of *Y.lipolytica* strains.

Wild type (wt) and two independent clones of *rab4Δ* (-1,-5) strains were grown as isolated colonies on solid YPD rich medium. Observation (64x) of a five days culture by binocular microscopy.

Figure 4 - Disruption of *Y.lipolytica* *RAB4* gene does not impair hyphal growth but affects dimorphic transition.

Microscope observation of the wild type (wt) and the mutant (*rab4Δ*) strains in liquid rich YPD medium exponential growth (OD₆₀₀:2) and stationary phase (OD₆₀₀:10).

Figure 5 - SDS and Calcofluor white sensitivity.

The *rab4Δ* (-1,-5) mutant strains are more sensitive to calcofluor white (CW) and more resistant to SDS than the wild type (wt) strain.

Figure 6: Endocytosis in the *rab4Δ* mutant strain is not impaired.

The incorporation of FM4-64 in the *rab4Δ-5* mutant strain is the same as in the wild type (wt) strain compared to a *sls2* mutant strain in which the FM4-64 incorporation is delayed. *Y.lipolytica* Sls2p is homologous to the *S.cerevisiae* Rcy1p which plays a role in the recycling pathway (see “The vesicle-SNARE Snc1p recycling” section). Low panel: Nomarski.

Figure 7 - The percentage of *Y.lipolytica* proteins with the greatest homology:

a: to *Saccharomyces cerevisiae*, *Candida glabrata*, *Kluyveromyces lactis*, *Debaryomyces hansenii*, *Schizosaccharomyces pombe*, *Neurospora crassa*, other fungi, animals, plants proteins; b: to *Saccharomyces cerevisiae*, *Candida glabrata*, *Kluyveromyces lactis*, *Debaryomyces hansenii*, *Schizosaccharomyces pombe*, *Neurospora crassa* proteins; c: to *Saccharomyces cerevisiae*, *Candida glabrata*, *Kluyveromyces lactis*, *Debaryomyces hansenii*,

Schizosaccharomyces pombe proteins. See Additional file 7 for the list of E-values obtained with BLAST of *Y.lipolytica* proteins against NCBI eukaryotic sequences.

Figure 8 - Percentages of greatest homology.

a: The percentage of *Y.lipolytica* proteins with the greatest homology to *S.cerevisiae* and animal proteins; b: The percentage of *S.cerevisiae* proteins with the greatest homology to *Y.lipolytica* and animal proteins. See Additional file 8 for the list of E-values obtained with BLAST of the *S.cerevisiae* proteins against NCBI eukaryotic protein sequences.

Additional files

Additional file 1 - Drawing of *Yarrowia lipolytica* identified proteins coats.

PM: plasma membrane, ER: endoplasmic reticulum, RE: recycling endosome, EE: early endosome, LE: late endosome, MVB: multi-vesicular bodies, SV: secretory vesicle.

Additional file 2 - List of *Yarrowia lipolytica* genes coding for the proteins potentially implicated in vesicular transport.

They were obtained by comparison against *Saccharomyces cerevisiae* protein sequences, BLAST results come from Génolevures web site, if *Candida glabrata*, *Kluyveromyces lactis*, *Debaryomyces hansenii* protein was found is indicated (see Additional file 9 for the list of the *Candida glabrata*, *Kluyveromyces lactis*, *Debaryomyces hansenii* genes).

Additional file 3 - Drawing of *Yarrowia lipolytica* identified Ypt/Rab GTPases.

PM: plasma membrane, ER: endoplasmic reticulum, RE: recycling endosome, EE: early endosome, LE: late endosome, MVB: multi-vesicular bodies, SV: secretory vesicle.

Additional file 4 – Full image of Figure 2

Additional file 5 - Drawing of *Yarrowia lipolytica* identified tethering factors.

PM: plasma membrane, ER: endoplasmic reticulum, RE: recycling endosome, EE: early endosome, LE: late endosome, MVB: multi-vesicular bodies, SV: secretory vesicle.

Additional file 6 - Drawing of *Yarrowia lipolytica* identified SNARE and SM proteins.

PM: plasma membrane, ER: endoplasmic reticulum, RE: recycling endosome, EE: early endosome, LE: late endosome, MVB: multi-vesicular bodies, SV: secretory vesicle.

Additional file 7 - E-values

E-values found for BLAST of *Yarrowia lipolytica* proteins against *Saccharomyces cerevisiae*, *Candida glabrata*, *Kluyveromyces lactis*, *Debaryomyces hansenii*, *Schizosaccharomyces pombe* (Sp), *Neurospora crassa*, other fungi, animals, plants, obtained with NCBI web site. Numbers between brackets indicate the order of best BLAST hits.

Fungi : *Ashbya gossypii* (Ag), *Aspergillus clavatus* (Ac), *Aspergillus fumigatus* (Af), *Aspergillus nidulans* (Asn), *Aspergillus niger* (An), *Aspergillus orizae* (Ao), *Aspergillus parasiticus* (Ap), *Aspergillus terreus* (Ast), *Chaetomium globosum* (Chg), *Coccidioides immitis* (Ci), *Coprinopsis cinerea* (Cc), *Cryptococcus neoformans* (Cn), *Gibberzlla zaeae* (Gz), *Hypocrea lixii* (Hl), *Magnaporthe grisea* (Mg), *Neosartorya fischeri* (Nf), *Neurospora crassa* (Nc), *Paracoccidioides brasiliensis* (Pb), *Phaeosphaeria nodorum* (Pn), *Ustilago maydis* (Um).

Animals : *Aedes aegypti* (Aa), *Aiptasia pulchella* (Ap), *Anopheles gambiae* (Ang), *Apis mellifera* (Am), *Bombyx mori* (Bm), *Bos taurus* (Bt), *Caenorhabditis briggsae* (Cb), *Caenorhabditis elegans* (Ce), *Canis familiaris* (Cf), *Danio rerio* (Dr), *Drosophila grimshawi* (Dg), *Drosophila melanogaster* (Dm), *Drosophila pseudoobscura* (Dp), *Gallus gallus* (Gg), *Homo sapiens* (Hs), *Macaca mulatta* (Mam), *Mus musculus* (Mm), *Oryzias latipes* (Ol), *Pan troglodytes* (Pt), *Pongo pygmaeus* (Pp), *Rattus norvegicus* (Rn), *Strongylocentrus purpuratus* (Stp), *Xenopus laevis* (Xl), *Xenopus tropicalis* (Xt).

Plants : *Arabidopsis thaliana* (At), *Brassica oleracea* (Bo), *Brassica rapa* (Br), *Hyacinthus orientalis* (Ho), *Lotus japonicus* (Lj), *Medicago truncatula* (Mt), *Nicotiana tabacum* (Nt), *Oenothera odorata* (Oo), *Oriza sativa* (Os), *Pisum sativum* (Ps), *Solanum chacoense* (Soc), *Solanum tuberosum* (St), *Zea mays* (Zm).

(As *Debaryomyces hansenii* Vps35p, Snx3p, Gyp2p, Sec20p, Sec18p sequences were absent from the NCBI database when the comparison was done, the e-values were obtained with the NCBI BLAST of the *Debaryomyces hansenii* protein sequence against *Yarrowia lipolytica* sequences).

Additional file 8 - E-values

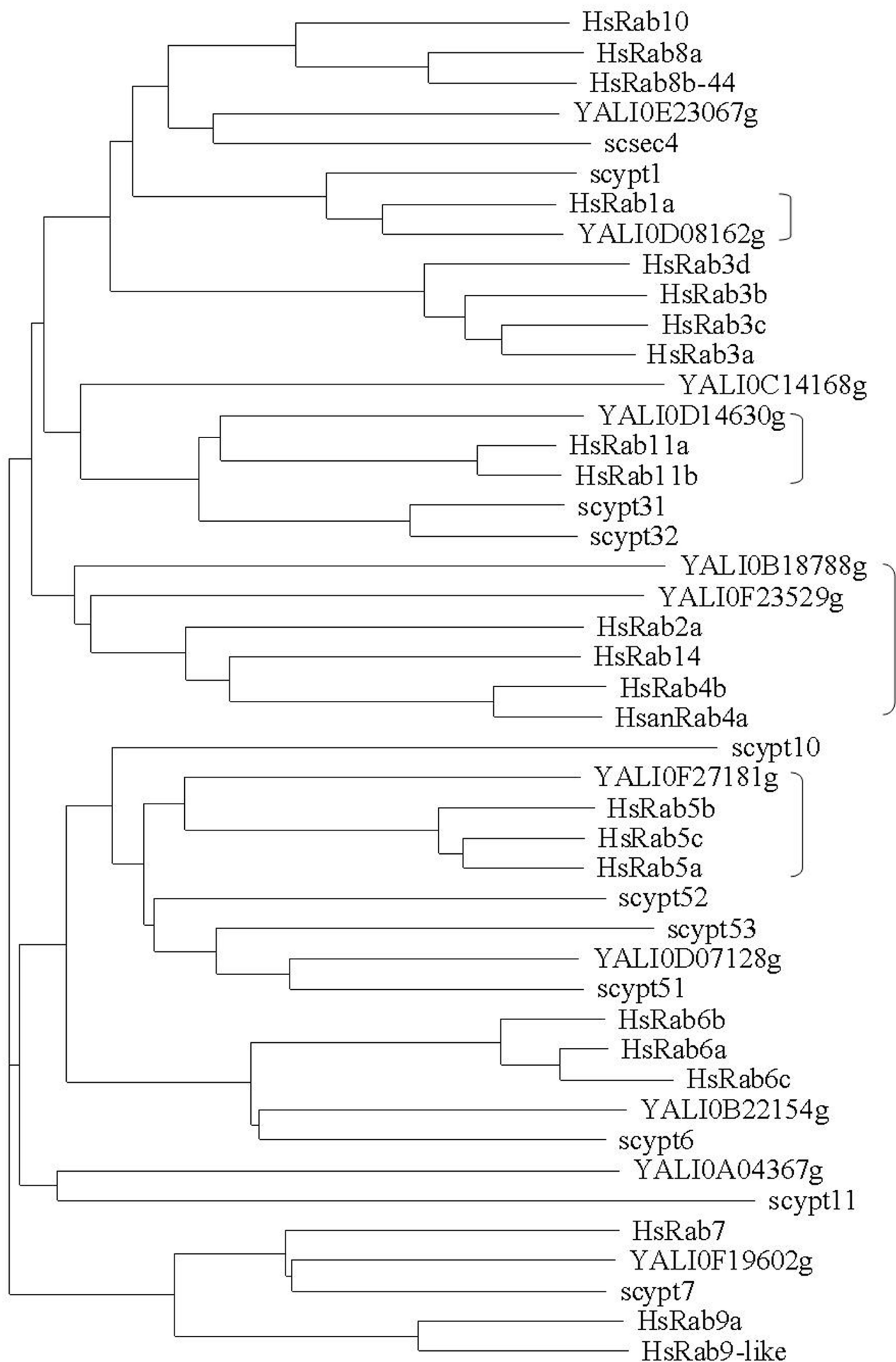
E-values found for NCBI BLAST of *Saccharomyces cerevisiae* proteins against *Yarrowia lipolytica* and animal proteins (see Additional file 7 legend for list of abbreviations).

Additional file 9 - List of *Candida glabrata*, *Kluyveromyces lactis*, *Debaryomyces hansenii* genes coding for the proteins potentially implicated in vesicular transport.

Table 1 - Differences observed for the five hemiascomycetous yeasts.

	<i>S. cerevisiae</i>	<i>Y. lipolytica</i>	<i>C. glabrata</i>	<i>K. lactis</i>	<i>D. hansenii</i>
COPII	Sec24p, Sfb2,3p (Sec24p-related) Sec13p Sed4p	2 proteins 1 protein no hits	3 proteins 2 proteins 1 protein	2 proteins 1 protein no hits	2 proteins 1 protein no hits
Adaptor	Aps1,2,3p Gga1,2p	2 proteins 1 protein (Gga2p)	3 proteins 1 protein (Gga2p)	3 proteins 1 protein (Gga2p)	3 proteins 1 protein (Gga2p)
Sorting Nexin	Snx41,42p	1 protein	2 proteins	2 proteins	2 proteins
Yptp	Ypt7p Ypt10p Ypt11p Ypt31-32p Ypt51,52,53p no hits	1 protein no hits no hits 2 proteins 3 proteins Rab2,4p-related	1 protein 1 protein 1 protein 2 proteins 2 proteins no hits	1 protein no hits 1 protein 1 protein (Ypt31p) 3 proteins no hits	2 proteins no hits no hits 1 protein (Ypt32p) 3 proteins no hits
Yptp regulation	Yos1p Gyp4p Gyl1p	no hits no hits no hits	no hits no hits 1 protein	no hits no hits no hits	1 protein no hits no hits
COG complex	Cog1p Cog2p Cog7p	no hits 1 protein no hits	1 protein 1 protein 1 protein	1 protein 1 protein 1 protein	no hits 1 protein 1 protein
Arfp	Arf1,2,3p Arl1p	2 proteins(Arf1,3p) 2 proteins	2 proteins(Arf1,2p) 1 protein	2 proteins (Arf2,3p) 1 protein	3 proteins 1 protein
Arl3p localization	NatC complex (3 proteins)	2 proteins	3 proteins	3 proteins	3 proteins
GARP complex	Vps51p	no hits	1 protein	1 protein	no hits
SNARE-Qa	Vam3p	Pep12p-like	1 protein	1 protein	Pep12p-like
SNARE-Qb,Qc	Sso1,2p	3 proteins	2 proteins	1 protein (Sso2p)	1 protein (Sso2p)
SNARE-Qc	Spo20p	no hits	no hits	no hits	no hits
SNARE-R	Sft1p	1 protein	no hits	1 protein	1 protein
	Syn8p	1 protein	no hits	no hits	1 protein
	Nyv1p	1 protein	1 protein	1 protein	no hits
	Snc1,2p	2 proteins	2 proteins	1 protein (Snc2p)	1 protein (Snc2p)
Exocytosis SNARE regulation proteins	Tpd3p (CAPP regulatory subunit) Tpk1,2,3p (PKA)	1 protein 1 protein	2 proteins 2 proteins	1 protein 2 proteins	1 protein 1 protein
SNARE recycling	Sec18p	1 protein	2 proteins	1 protein	1 protein

See Additional file 2 for the list of proteins potentially implicated in vesicular transport.



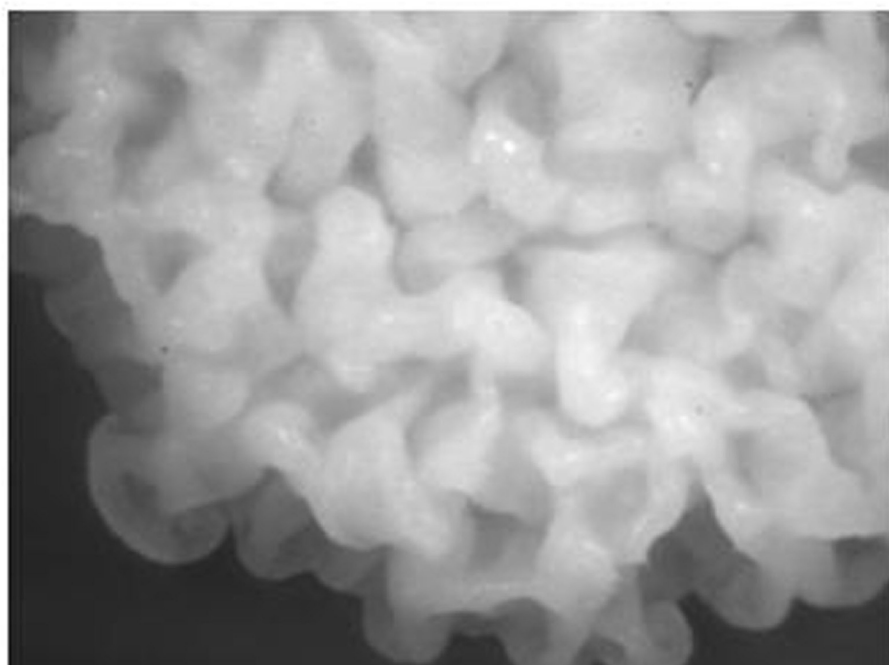
0.1

Figure 1

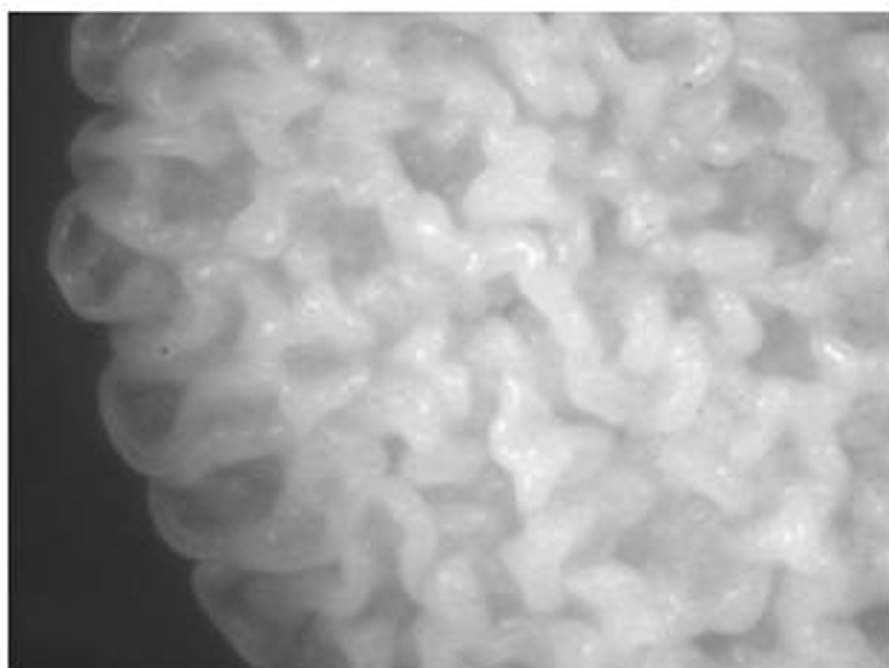
		RabSF1	PM1	RabSF2	G1	PM2	RabF1	RabF2	PM3	RabF3	
	*	20	*	40	*	60	*	80	*	100	
Mmrab4a :	-----	MS-ETYDFLFRFLVIGNAGT	GKSCLLHQFIEKKF	RDDSNHTIGMEFGSKI	INVGG	-----	RYVKLQIWDTAGQERFRSV	:	73		
Rnrab4a :	-----	MS-ETYDFLFRFLVIGNAGT	GKSCLLHQFIEKKF	RDDSNHTIGVEFGQKI	INVGG	-----	KYVKLQIWDTAGQERFRSV	:	73		
Hsrab4a :	-----	MS-ETYDFLFRFLVIGNAGT	GKSCLLHQFIEKKF	RDDSNHTIGVEFGSKI	INVGG	-----	KYVKLQIWDTAGQERFRSV	:	73		
Dmrab4 :	-----	MS-ETYDFLFRFLVIGNAGT	GKSCLLHQFIEKSF	RDDSNHTIGVEFGSRIV	INVGG	-----	KSVKLQIWDTAGQERFRSV	:	73		
Ncrab4 :	MTRPRSSATSEESAGTGREQ	ELG-SMYDYLAKIILLGPS	SGKSCLLHQFVKS	EWVLESCTIGVEFASKI	IKVGTGARRKRIKLQL	WDTAGTERFRSV	:	99			
Spypt4 :	-----	MDKESYDYLVKIIVLAGPS	GTGKSCLLHQFVKN	QDDQVSEITVGI	DFASRIISVGMGNQQR	RIKLQIWDTAGQERFRSV	:	78			
YlRab4p :	-----	MPSNSTSNSTDASDFD	SDLRYDYIAKVILLGPS	CGKSCIMRFVKGE	WVSSCTIGVEFASKI	IVRVGSGSNLTRIKLQL	WDTAGQERFRAL	:	93		

Figure 2

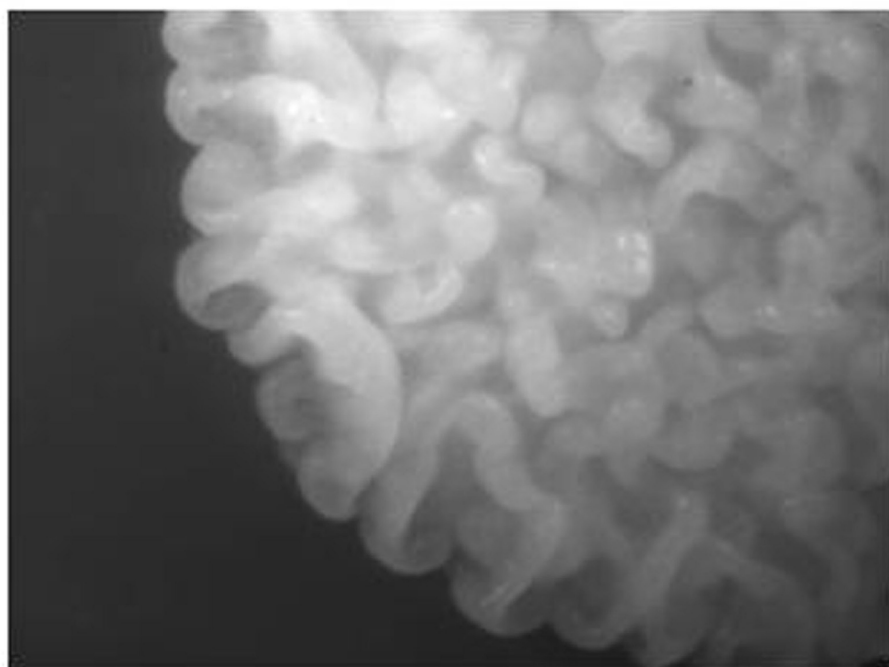
wt



rab4Δ-1



rab4Δ-5



wt

rab4Δ

OD₆₀₀

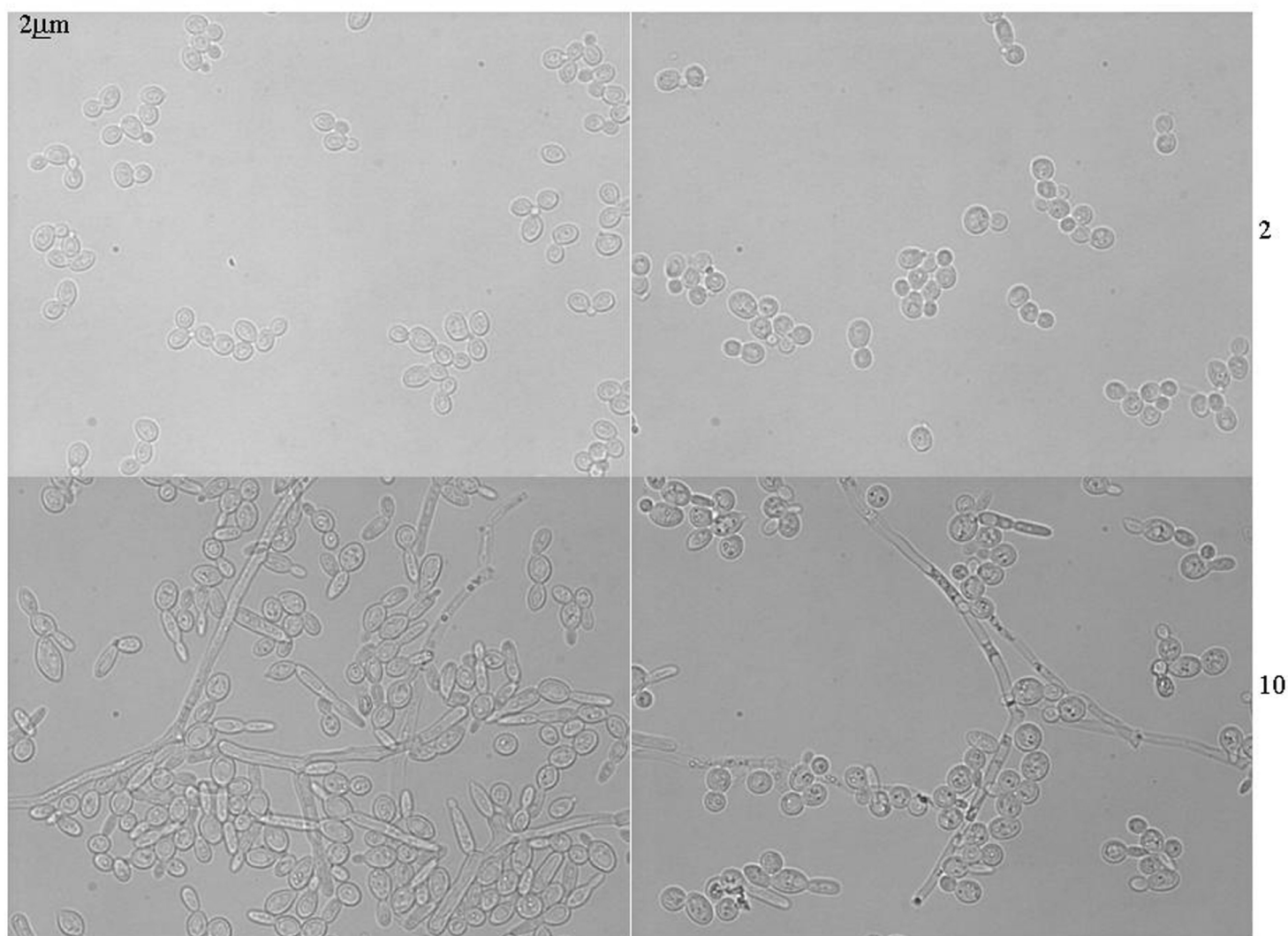


Figure 4

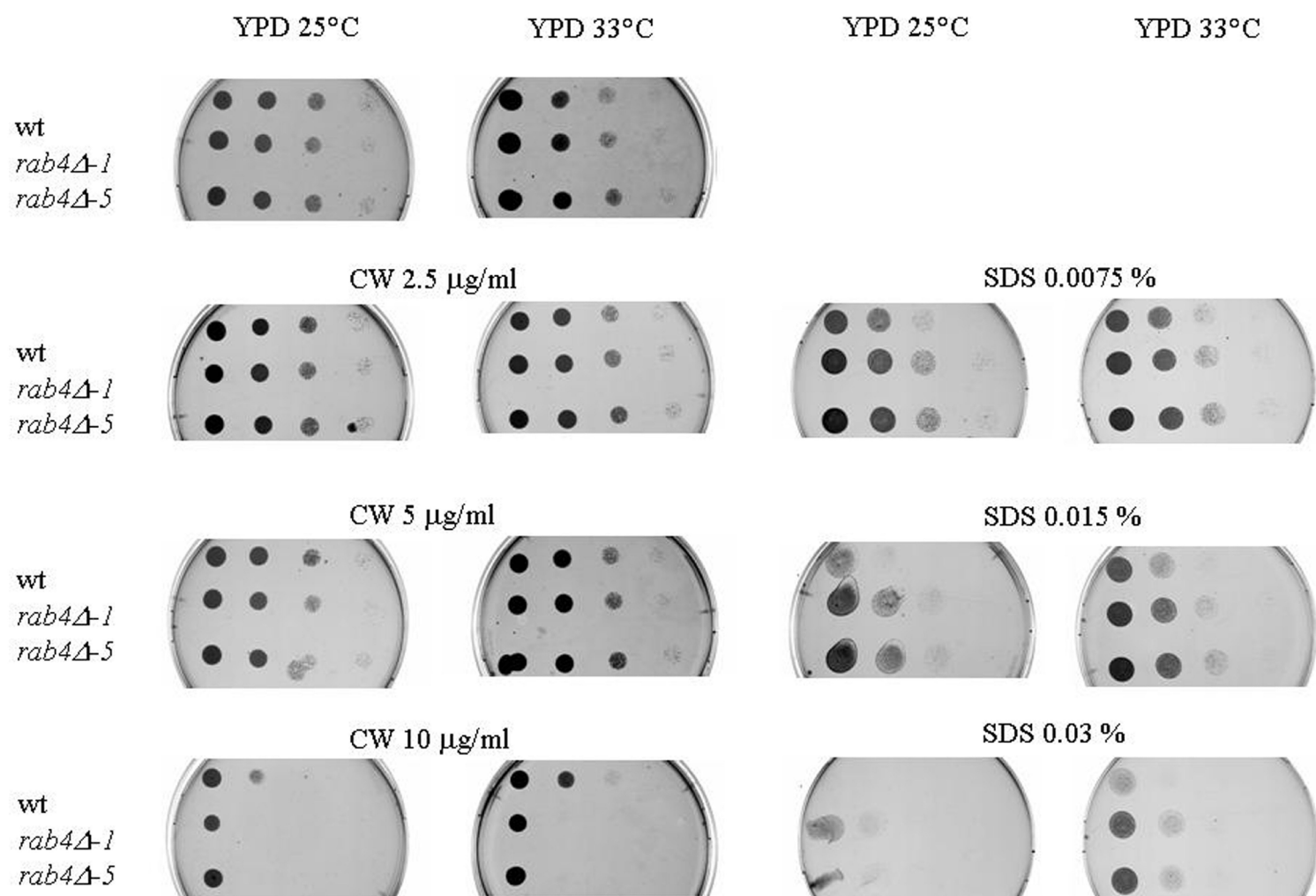


Figure 5

wt

rab4Δ-5

sls2

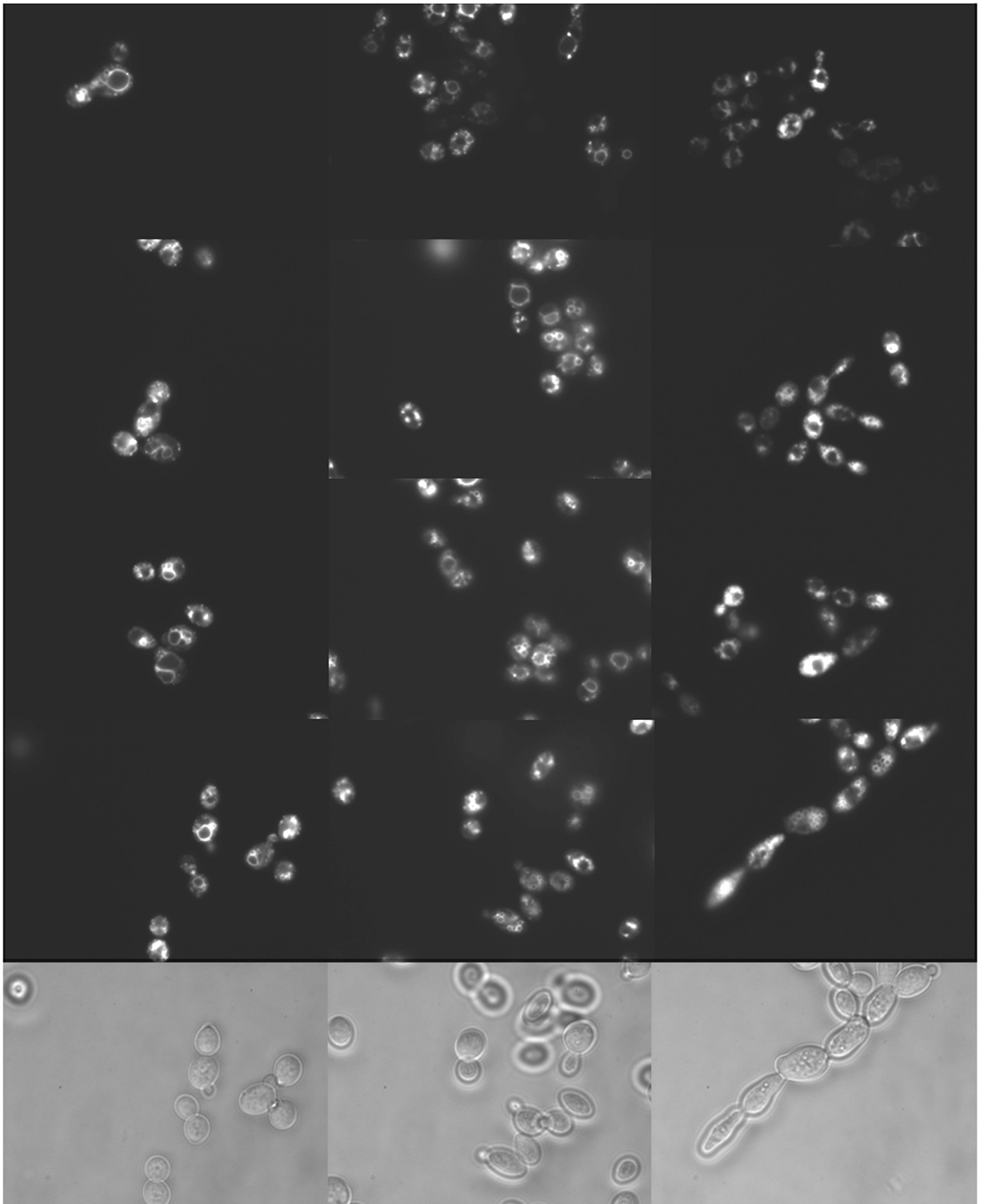


Figure 6

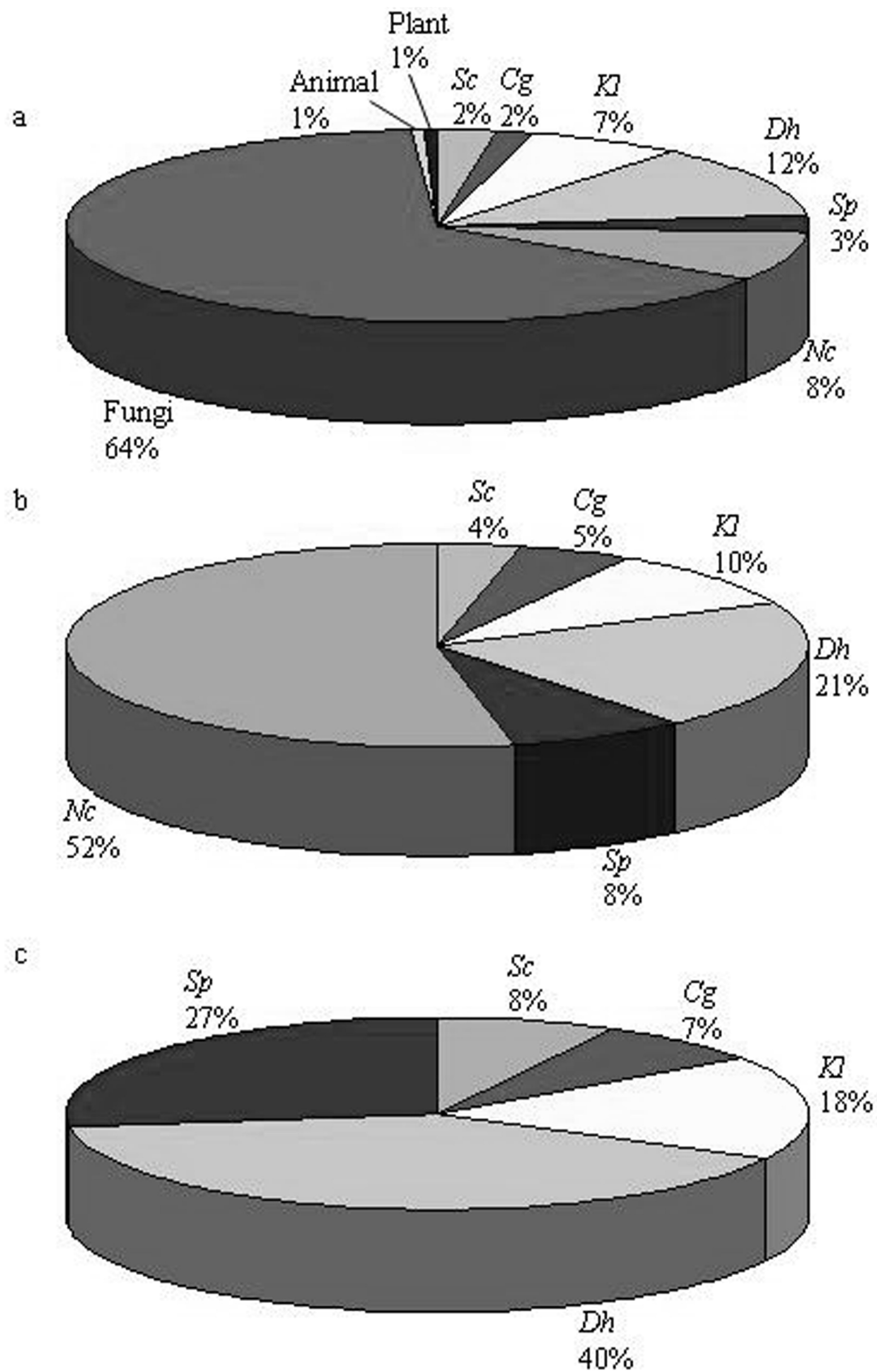
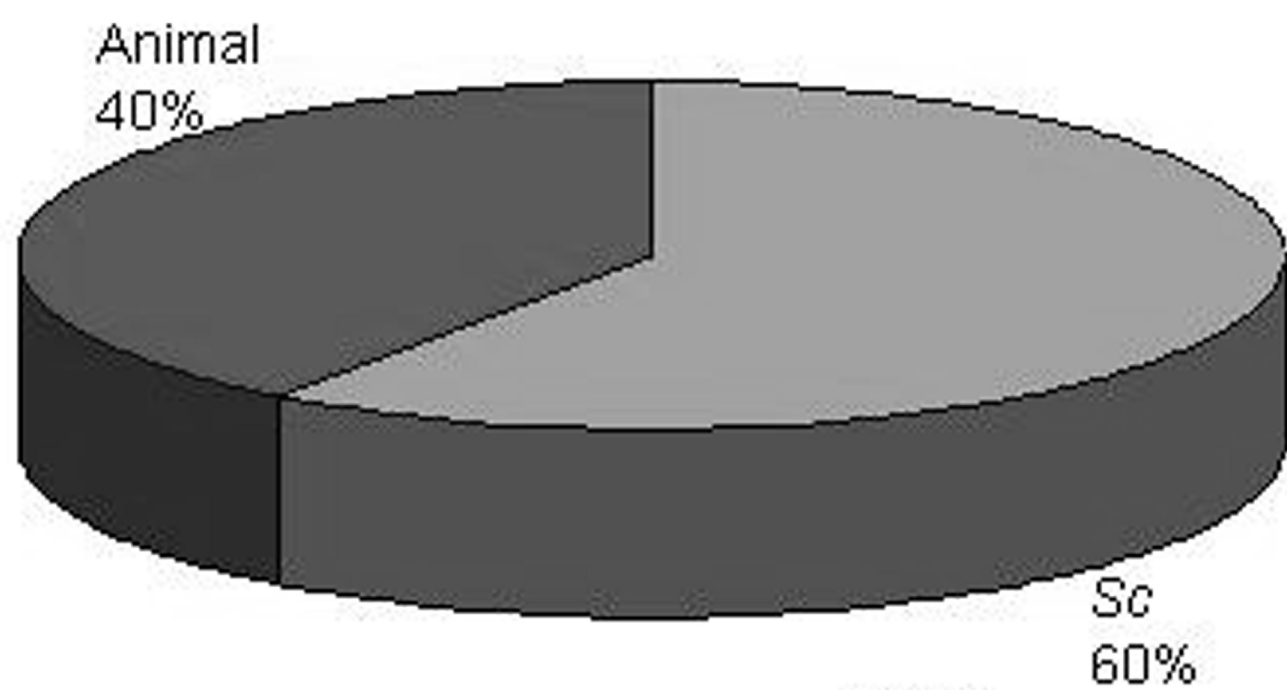
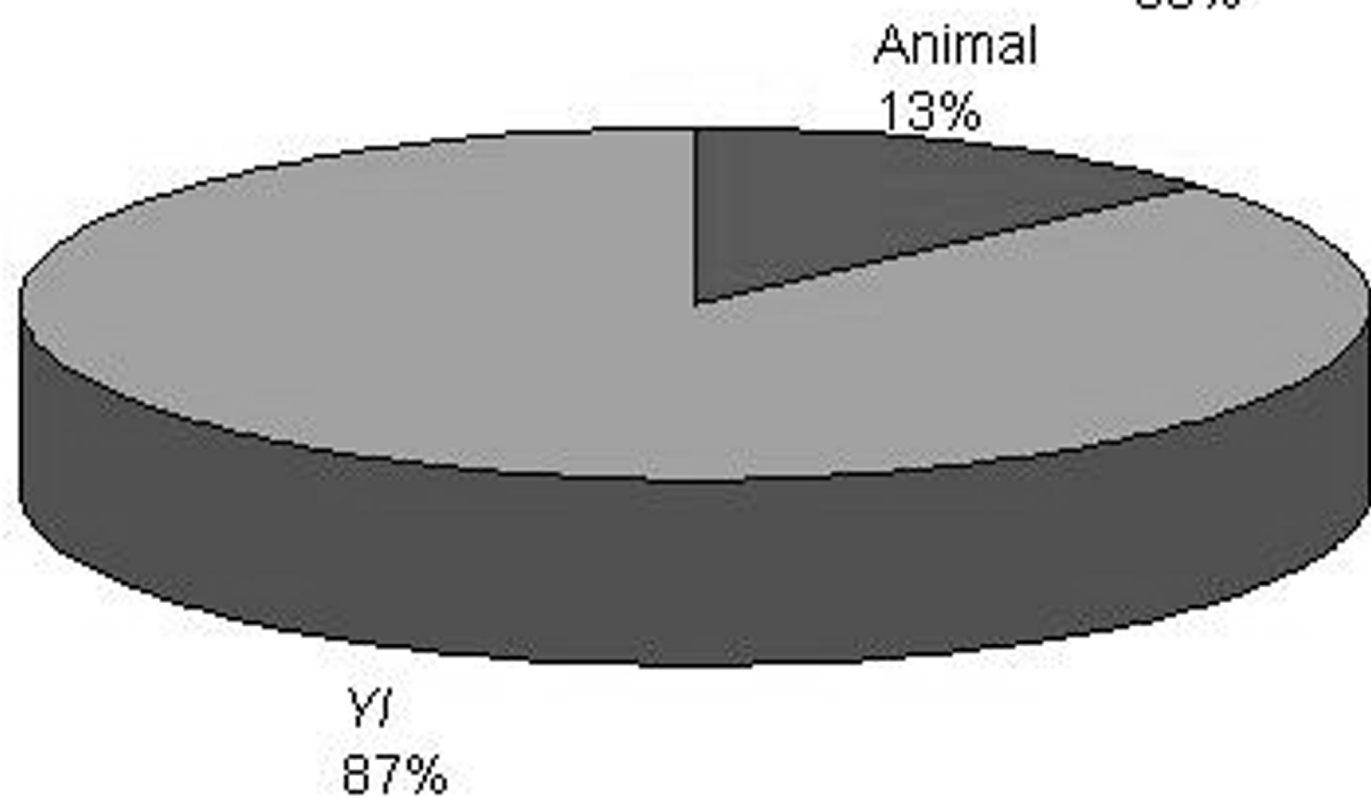


Figure 7

a



b



Additional files provided with this submission:

Additional file 1: add-file-1.jpg, 1784K

<http://www.biomedcentral.com/imedia/1200219946168376/supp1.jpeg>

Additional file 2: add-file-2.doc, 431K

<http://www.biomedcentral.com/imedia/1785472271683769/supp2.doc>

Additional file 3: add-file-3.jpg, 788K

<http://www.biomedcentral.com/imedia/1880773834168377/supp3.jpeg>

Additional file 4: add-file-4.jpg, 2411K

<http://www.biomedcentral.com/imedia/1033979084168377/supp4.jpeg>

Additional file 5: add-file-5.jpg, 2231K

<http://www.biomedcentral.com/imedia/1281697351168378/supp5.jpeg>

Additional file 6: add-file-6.jpg, 1214K

<http://www.biomedcentral.com/imedia/2055667646168378/supp6.jpeg>

Additional file 7: add-file-7.doc, 377K

<http://www.biomedcentral.com/imedia/2333486421683784/supp7.doc>

Additional file 8: add-file-8.doc, 184K

<http://www.biomedcentral.com/imedia/2102708507168379/supp8.doc>

Additional file 9: add-file-9.doc, 307K

<http://www.biomedcentral.com/imedia/7644192301683785/supp9.doc>