



HAL
open science

The bias in GRACE estimates of continental water storage variations

R. Klees, E. A. Zapreeva, H. C. Winsemius, H. H. G. Savenije

► **To cite this version:**

R. Klees, E. A. Zapreeva, H. C. Winsemius, H. H. G. Savenije. The bias in GRACE estimates of continental water storage variations. *Hydrology and Earth System Sciences Discussions*, 2007, 11 (4), pp.1227-1241. hal-00305069

HAL Id: hal-00305069

<https://hal.science/hal-00305069>

Submitted on 18 Jun 2008

HAL is a multi-disciplinary open access archive for the deposit and dissemination of scientific research documents, whether they are published or not. The documents may come from teaching and research institutions in France or abroad, or from public or private research centers.

L'archive ouverte pluridisciplinaire **HAL**, est destinée au dépôt et à la diffusion de documents scientifiques de niveau recherche, publiés ou non, émanant des établissements d'enseignement et de recherche français ou étrangers, des laboratoires publics ou privés.

The bias in GRACE estimates of continental water storage variations

R. Klees¹, E. A. Zapreeva¹, H. C. Winsemius², and H. H. G. Savenije²

¹Delft Institute of Earth Observation and Space Systems (DEOS), Delft University of Technology, The Netherlands

²Department of Water Management, Delft University of Technology, The Netherlands

Received: 11 October 2006 – Published in Hydrol. Earth Syst. Sci. Discuss.: 21 November 2006

Revised: 19 March 2007 – Accepted: 12 April 2007 – Published: 3 May 2007

Abstract. The estimation of terrestrial water storage variations at river basin scale is among the best documented applications of the GRACE (Gravity and Climate Experiment) satellite gravity mission. In particular, it is expected that GRACE closes the water balance at river basin scale and allows the verification, improvement and modeling of the related hydrological processes by combining GRACE amplitude estimates with hydrological models' output and in-situ data.

When computing monthly mean storage variations from GRACE gravity field models, spatial filtering is mandatory to reduce GRACE errors, but at the same time yields biased amplitude estimates.

The objective of this paper is three-fold. Firstly, we want to compute and analyze amplitude and time behaviour of the bias in GRACE estimates of monthly mean water storage variations for several target areas in Southern Africa. In particular, we want to know the relation between bias and the choice of the filter correlation length, the size of the target area, and the amplitude of mass variations inside and outside the target area. Secondly, we want to know to what extent the bias can be corrected for using a priori information about mass variations. Thirdly, we want to quantify errors in the estimated bias due to uncertainties in the a priori information about mass variations that are used to compute the bias.

The target areas are located in Southern Africa around the Zambezi river basin. The latest release of monthly GRACE gravity field models have been used for the period from January 2003 until March 2006. An accurate and properly calibrated regional hydrological model has been developed for this area and its surroundings and provides the necessary a priori information about mass variations inside and outside the target areas.

The main conclusion of the study is that spatial smoothing significantly biases GRACE estimates of the amplitude of annual and monthly mean water storage variations and that bias correction using existing hydrological models significantly improves the quality of GRACE estimates. For most of the practical applications, the bias will be positive, which implies that GRACE underestimates the amplitudes. The bias is mainly determined by the filter correlation length; in the case of 1000 km smoothing, which is shown to be an appropriate choice for the target areas, the annual bias attains values up to 50% of the annual storage; the monthly bias is even larger with a maximum value of 75% of the monthly storage. A priori information about mass variations can provide reasonably accurate estimates of the bias, which significantly improves the quality of GRACE water storage amplitudes. For the target areas in Southern Africa, we show that after bias correction, GRACE annual amplitudes differ between 0 and 30 mm from the output of a regional hydrological model, which is between 0% and 25% of the storage. Annual phase shifts are small, not exceeding 0.25 months, i.e. 7.5 deg. It is shown that after bias correction, the fit between GRACE and a hydrological model is overoptimistic, if the same hydrological model is used to estimate the bias and to compare with GRACE. If another hydrological model is used to compute the bias, the fit is less, although the improvement is still very significant compared with uncorrected GRACE estimates of water storage variations. Therefore, the proposed approach for bias correction works for the target areas subject to this study. It may also be an option for other target areas provided that some reasonable a priori information about water storage variations are available.

Correspondence to: R. Klees
(r.klees@tudelft.nl)

1 Introduction

The Gravity Recovery and Climate Experiment (GRACE), launched in March of 2002, has been designed to measure the Earth's time variable gravity field at approximately monthly intervals with a spatial resolution of a few hundred kilometers. So far, 34 monthly gravity field solutions (April 2002–March 2006) have been released to the scientific community. Each solution consists of a set of spherical harmonic coefficients complete to degree and order 120. Differences between two monthly solutions reflect temporal gravity variations. They are caused by post glacial rebound, mass transport in the atmosphere and the oceans, and the redistribution of water, snow and ice on land. Prior to gravity field estimation, GRACE measurements have already been corrected for the major contribution of ocean and atmospheric mass variations. Therefore, differences between two monthly solutions mainly reflect changes in terrestrial water storage, i.e. groundwater, soil moisture, rivers, lakes, snow, and ice.

As a result, GRACE promises to provide new hydrological information in the form of estimates of monthly mean water storage variations over river basins having length scales of a few hundred kilometers and larger. This would allow the closure of the water balance for river basins and the verification and improvement of the modelling of the related hydrological processes by combining GRACE estimates of monthly mean water storage variations with hydrological observations and hydrological model output.

However, GRACE estimates of monthly mean water storage variations are erroneous due to measurement noise and the aliasing of unmodelled high-frequency mass variations into the monthly GRACE gravity field solutions (Swenson and Wahr, 2002; Wahr et al., 1998, 2006; Swenson and Wahr, 2006). Figure 1 shows the difference between two monthly gravity field solutions expressed in terms of equivalent water heights without smoothing and with 1000 km Gaussian smoothing.

The trackiness of the plot, which is typical for GRACE monthly solutions, is due to GRACE data errors and errors in the background models used in the pre-processing of GRACE data, and can be much larger than the mass variation. To reduce these errors, spatial filtering (i.e. smoothing) is routinely applied. Unfortunately, spatial filtering biases the GRACE estimates of monthly mean mass variations. It is the subject of optimal filter design to find a filter that minimizes the sum of GRACE errors and filter errors.

The subject of this paper is to analyze the bias in GRACE estimates and to investigate to what extent the bias can be reduced when using a priori information about mass variations. This improves the understanding of the potential and limitations of GRACE estimates of monthly mean water storage variations and is the basis for the design of an optimal filter for the target area at hand.

The paper is organized as follows: in Sect. 2, the relation between mass variations inside and outside the target area,

spatial smoothing, and bias has been established. In particular, an alternative representation of the bias has been derived, which shows explicitly the contribution to the bias of mass variations inside and outside the target area. The approach to be followed in this study is outlined in Sect. 3. Information about mass variations inside and outside the target area is needed to compute the bias. We use the regional hydrological model LEW to provide this information for four target areas in Southern Africa centred at the upper Zambezi sub-catchment. The model is described in Sect. 4. The results of the analysis are presented in Sect. 5. This includes a time series of the bias for the period January 2003 until March 2006 for each target area and various choices of spatial filtering, and a comparison of GRACE bias-corrected and uncorrected monthly mean water storage variations with the output of the LEW hydrological model. In particular, it has been shown that after bias correction, the agreement between LEW and GRACE are on the level of several millimeters, which gives an indication of residual errors in smoothed GRACE data and LEW model errors. Finally, uncertainties in the LEW model output have been estimated using Monte-Carlo simulations, and propagated into the bias. This gives an idea about the quality of a priori water storage variations needed to compute the bias.

Section 6 contains a summary of the results and the main conclusions of this study. In particular, some advice concerning the use of GRACE models and bias computation has been given.

2 GRACE monthly mean mass variations, spatial filtering, and bias

Monthly GRACE gravity field models are very noisy (cf. Fig. 1). When computing the monthly mean water storage variation over a target area, the noise is partially reduced, but still unacceptable high. Therefore, some additional spatial smoothing is required prior to the computation of mean monthly mass variations over a target area. Isotropic Gaussian smoothing is widely used in many GRACE related studies (e.g. Jekeli, 1981; Wahr et al., 1998). More advanced approaches include non-isotropic smoothing kernels (e.g. Han et al., 2005) or Wiener filters, which use a priori information about noise and signal (i.e. water storage) (e.g. Swenson and Wahr, 2002).

Spatial smoothing reduces noise, but also introduces a bias in the estimated monthly mean water storage variation. This bias leads to a significant amplitude reduction in estimated monthly mean water storage variations. Therefore, Velicogna and Wahr (2006) re-scaled the amplitude estimates for Antarctica by a factor of 1.61; Fenoglio-Marc et al. (2006) applied a factor of 1.79 for the Mediterranean Sea; Chen et al. (2007) found a scaling factor of 1.33 for the Amazon and Mississippi basins and 1.54 for the Ganges and Zambezi basins.

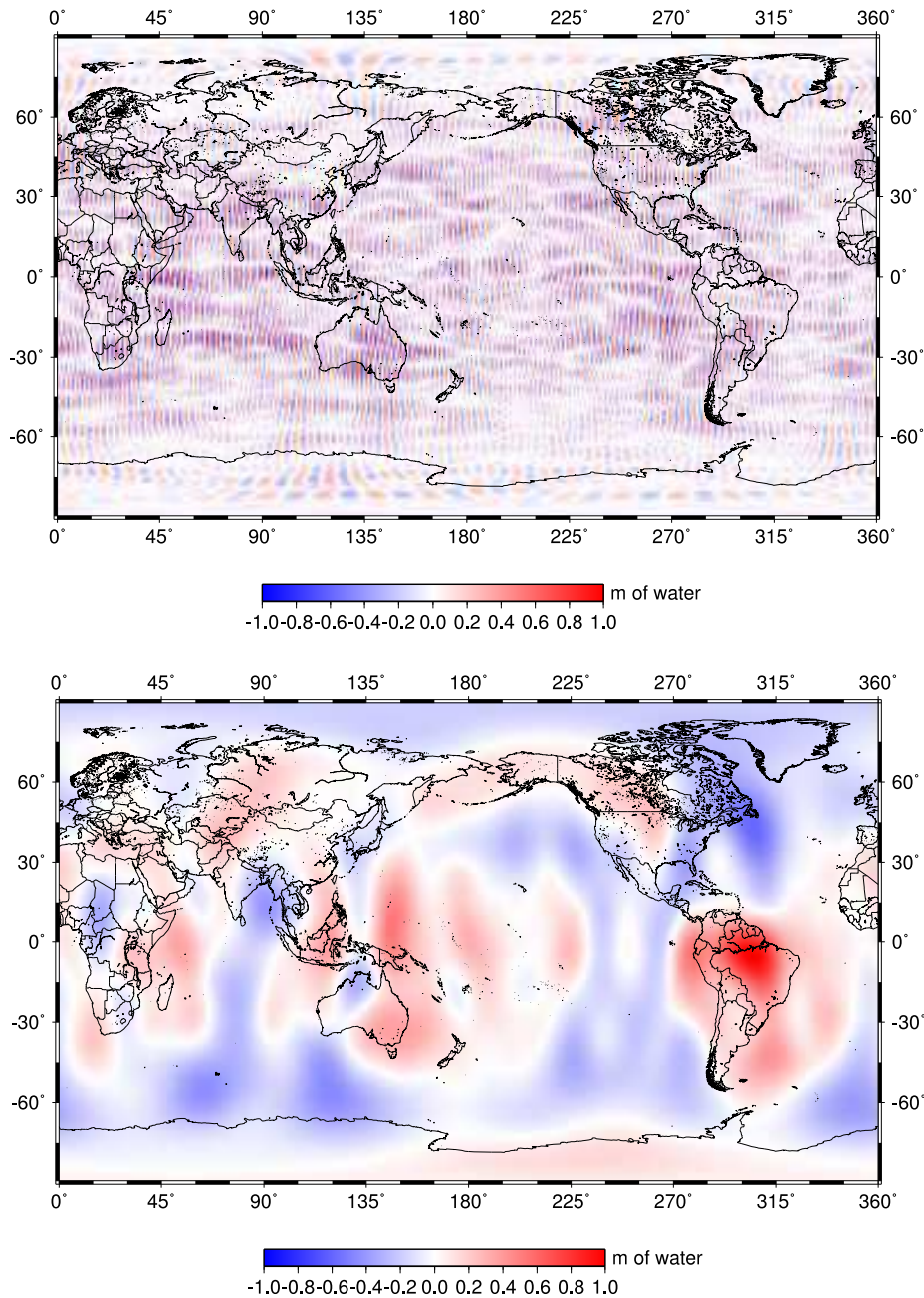


Fig. 1. Global monthly mean water storage variation between April and March 2003 from GRACE. Top panel – without smoothing, Bottom panel – after 1000 km Gaussian smoothing.

In appendix it is shown that the bias in the GRACE monthly mean water storage estimate can be written as

$$\bar{\varepsilon}_0 = \frac{1}{4\pi R^2} \int_{\sigma_0} f_0(\chi - W) d\sigma_R - \frac{1}{4\pi R^2} \int_{\sigma_R - \sigma_0} f_l W d\sigma_R, \quad (1)$$

where f_0 is the mass variation inside the target area, f_l the mass variations outside the target area, χ the characteristic function of the target area, and W the target area filter function, which is the spherical convolution of the spatial filter

function (e.g. the Gaussian kernel) with the characteristic function χ . σ_0 is the target area and σ_R is the mean Earth sphere. According to Eq. (1), the bias consists of two terms. The first term on the right-hand side of Eq. (1) is called *type 1 error*. It expresses the contribution of mass variations inside the target area to the bias. Since $\chi - W$ is always positive, it causes an *underestimation* of the amplitude of the monthly mean mass variation averaged over the target area. The second term on the right-hand side of Eq. (1) is called *type 2*

error. It represents the contribution of mass variations outside the target area to the bias. If the mass variations inside and outside the target area are “in phase” (i.e. they have the same sign), the sum of the two terms of the right-hand side of Eq. (1) is always smaller than each individual term; in other words, the two bias contributors cancel to some extent. That may be the reason why in literature (e.g. Chen et al., 2005a,b) *filtered* GRACE solutions fit quite well with *unfiltered* estimates of the monthly mean storage variation from hydrological models. The sum of the two error terms will attain a maximum if there are no mass variations outside the target area or, even more extreme, if the mass variation outside the target area differs in sign from the mass variation inside the target area. Note that $\bar{\epsilon}_0$ is sometimes called *leakage error* (e.g. Wahr et al., 1998; Swenson and Wahr, 2002; Swenson et al., 2003); sometimes the term *leakage error* only refers to the type 2 error (e.g. Klees et al., 2006).

3 Approach

In this study, we want to analyse the time behaviour of the bias, due to spatial smoothing in GRACE monthly mean water storage variations for various target areas in Southern Africa; moreover we want to investigate how accurately the bias can be estimated using a priori information about the mass variations. The following approach is followed:

- To quantify the bias, we need information about the mass variation inside (function f_0 , Eq. (1)) and outside (function f_l , Eq. (1)) the target area. Information about f_l is only required within the significant support of the target area filter function W , which in turn depends on the correlation length of the spatial filter. Therefore, small errors may be introduced at this stage if the significant support of the filter function W exceeds the range of the LEW model. We will come back to this question in Sect. 4.
- Four target areas located in Southern Africa have been selected, with different sizes ranging from $4.7 \times 10^5 \text{ km}^2$ to $5.2 \times 10^6 \text{ km}^2$. This has been done, in order to investigate the relation between magnitude of the bias and size of the target area.
- Information about the spatial and temporal behaviour of the functions f_0 and f_l are provided by the regional Lumped Elementary Watershed (LEW) model for Southern Africa, which is described in section 4. This information is considered as ‘exact’ when computing the bias.
- 34 monthly GRACE gravity field models, covering the period between January 2003 and March 2006, have been used (release RL03 models, provided by GFZ).

The models have been smoothed with a Gaussian filter with correlation length 600, 800, and 1000 km, respectively. This allows to investigate the relation between the correlation length and the bias. The smoothed GRACE monthly gravity field models have been transformed into monthly mean water storage over the target areas following the approach by (Swenson and Wahr, 2002). The mean water storage over the period January 2003 and June 2006 has been subtracted, which gives GRACE monthly mean water storage variations over the target areas relative to the mean.

- The LEW model has been run for the period January 2003 until March 2006, providing a time series of monthly water storage variations for each target area relative to the mean. This information has been used in Eq. (1) to obtain a time series of bias estimates in GRACE monthly mean water storage. At this stage, uncertainties in LEW have been ignored.
- GRACE monthly mean water storage variations have been bias corrected. Consequently, the biased and the bias-corrected GRACE monthly mean water storage variations have been compared with the output of the LEW model and the fit between LEW model output and GRACE estimates has been assessed.
- In reality, the mass variations inside and outside the target areas are not precisely known. To quantify the effect of uncertainty in prior information about the mass variation functions on the computed bias, the uncertainties in the LEW model output have been simulated by Monte Carlo techniques and propagated into bias uncertainties. This allows the assessment of errors in a priori mass variation function and how they propagate into the bias. Alternatively, the global CPC-GLDAS hydrological model output has been used to compute the bias. Details are described in Sect. 5.3. Results have been compared with the bias from LEW model output.

4 Lumped Elementary Watershed for Southern Africa (LEW)

It is well known that global hydrological models have quite large uncertainties and hardly can be used for the purpose of this study. In our investigation of the bias in GRACE monthly mean water storage variations caused by spatial smoothing, we deal with relatively small target areas of 10^5 – 10^6 km^2 . Therefore, we use a recently developed LEW regional hydrological model output to compute the bias.

The Lumped Elementary Watershed (LEW) approach has been presented in a previous study by Winsemius et al. (2006a). The application of this approach over the Zambezi gave promising results and is specifically interesting for application in Africa, since it enables the implicit incorporation of redistribution of surface runoff in downstream located

model units, called LEWs, that represent e.g. a wetland, lake or man-made reservoir.

For this study, the model presented in Winsemius et al. (2006a) has been extended, by taking into account all river basins below the equator, in particular Shebelle, Southern part of the Nile, Congo, Zambezi, Okavango, Limpopo, and Orange. In this section a short description of the modelling approach is given.

4.1 Sub-catchment delineation

Figure 4 shows the major river basins, being considered in the model. Within the major basins, many model units or “LEWs” have been delineated. Most LEWs represent sub-catchments, however remarks can be made about a few LEWs: the major lakes and reservoirs in our target area, the Zambezi, have also been separately delineated. These are Lake Kariba, Lake Cahora-Bassa and Lake Nyasa (also known as Lake Malawi). The flow behaviour in the upper Nile is very much dependent on the water level in lake Victoria. Therefore, a LEW has been defined for lake Victoria. Runoff from upstream LEWs spill in this lake and downstream runoff has been generated through a simple outflow relation dependent on the water level. In the Okavango river basins, the Okavango delta has been delineated manually to take into account the surface runoff redistribution which is actually taking place in this delta. Also its neighbouring interior basins have been modelled in a purely “vertical” way, meaning that there is no lateral exchange of water between these basins and others (i.e. there are no runoff processes considered). The same holds for the 2 most eastern sub-catchments of the Shebelle sub-model. These basins drain on the salt lake Turkana (North-Kenya – Rift Valley) and therefore do not produce any runoff to neighbouring catchments.

4.2 Climate input data

For calibration, the model has been forced by data from the Climate Research Unit (CRU) (New et al., 2002). These data consist of fields of global monthly precipitation, wind speed, relative humidity, and 2 m air temperature (minimum, maximum and mean). All data are given on a 0.5×0.5 degree grid. The grids have been used to compute reference evaporation numbers, based on the Penman-Monteith equations (Penman, 1948; Monteith, 1981).

These climate data are completely based on ground station records. The spatial coverage is non-homogeneous in time and, therefore, the quality is non-homogeneous in space and time. For that reason, the emphasis of the model calibration was on the overall discharge behaviour (e.g. the behaviour of apparent linear reservoirs and long-term released volumes). We feel that for our application, the use of CRU data is adequate. We must underline that the model developed for this study may be used for other purposes, as well, however it is advised to use regional rainfall sources and re-calibrate the

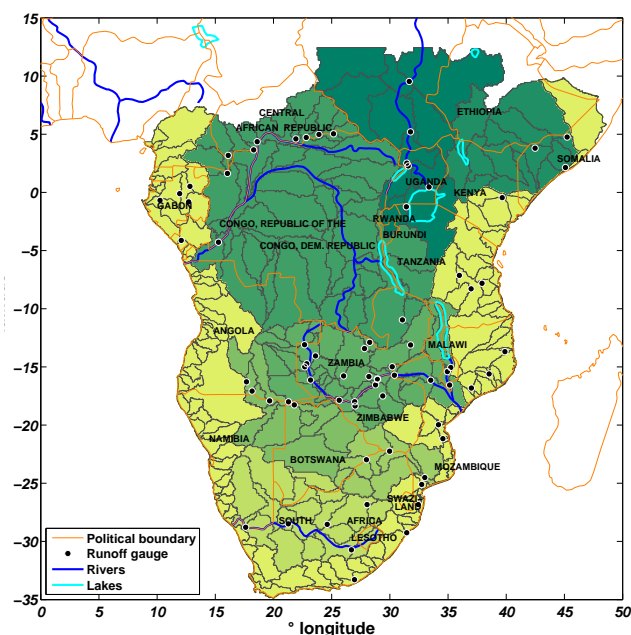


Fig. 2. The Lumped Elementary Watershed model for Southern Africa as being used in this study. The grey lines represent the delineations of sub-catchments. Large rivers and lakes are indicated in respectively dark and light blue. The major river basins selected for this model are shown in a color gradient from dark-green to yellow. The black dots indicate locations of runoff gauges, from which monthly stream flow records are available and have been used for calibration.

model when it is used for smaller scales than considered in this study.

4.3 Runoff

Monthly runoff data has been obtained from several data sources, among which the Global Runoff Data Centre and the Zambian Department of Water Affairs (Lusaka, Zambia). Anywhere where there was runoff available (sometimes very short time series), it was used to calibrate the model. Generally, parsimonious model structures were applied and most model units were given the same model structure. In general, it may be expected that the model performs best in regions where both the rainfall and runoff gauge network is relatively dense. As can be observed in Fig. 4, many parts of this model remain ungauged. The reliability of modelled storage is for a large part dependent on the correct estimation of the storage thresholds, more specific, the storage capacity of soil moisture. Generated runoff amounts at river outlets have been therefore calibrated in such a way, that at least the total long-term released volumes of runoff are more or less equal to the observed long-term volumes. This is for example done at the outlet of the Congo. While quite some runoff information was available from the Northern parts of

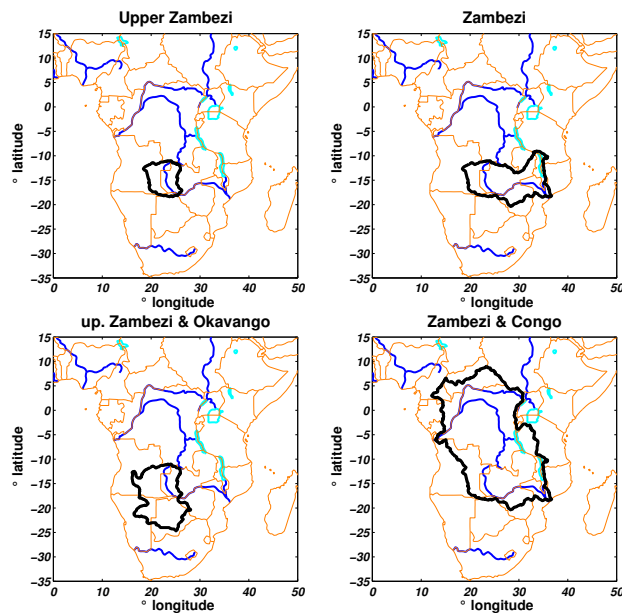


Fig. 3. The four target areas being used in this study (from left to right, from top to bottom): upper Zambezi, Zambezi, upper Zambezi + Okavango, and Zambezi + Congo.

the Congo, the Southern part (near the Zambezi) remains completely ungauged. Therefore, the LEWs near the Zambezi have been given parameter values that were appointed to their neighbouring LEWs located within the Zambezi, where quite some runoff gauges are present and further calibration was applied to match long-term runoff volumes at the Congo's most downstream runoff gauge.

4.4 Regional water management and wadis

A large challenge in large-scale water balance modelling is the regional lateral interactions that take place between river and surrounding areas, either because of human interference or present topography, geology and climatology. Large dams and lakes may be relatively simple to include in the LEW modelling approach as was described in Sect. 4.2, however information is needed about there operation and general behaviour (e.g. surface – volume curves and operating rules) to adequately model their water balance. For the application that is presented in this paper, we feel that a rough estimation of their water balance should be adequate. In addition, many irrigation schemes are present in Southern Africa, more specifically in the Orange basin, the lower Zambezi and the Incomati. Also wadi areas are present, e.g. in the Shebelle river basin, where runoff is generated in the Ethiopian highlands, which ends up in the downstream desert area. The redistribution of surface runoff over either irrigated areas or wadis has been included by spilling a certain amount of runoff in downstream irrigated areas, wadis or wetlands.

For other applications where these interactions are of greater importance, more details about these interactions must be included in the model.

4.5 LEW model run for GRACE time series

The LEW water storage estimates have been generated using rainfall estimates from the Famine Early Warning System (FEWS) (Herman et al., 1997). This product is partly satellite based and has a resolution of $0.1 \times 0.1^\circ$. The estimates have been lumped over the LEWs to provide a time series from January 2001 until June 2006. The first 2 years of simulation have been taken as warming-up time to stabilize the state variables of the LEW model structures.

5 Results of the error analysis

The analysis has been done for four target areas of different sizes (cf. Fig. 3):

1. upper Zambezi (UZ), $4.7 \times 10^5 \text{ km}^2$,
2. Zambezi (Z), $1.3 \times 10^6 \text{ km}^2$,
3. upper Zambezi + Okavango (UZO), $1.2 \times 10^6 \text{ km}^2$,
4. Zambezi + Congo (ZC), $5.2 \times 10^6 \text{ km}^2$.

This has been done in order to investigate the relation between size of the area and amplitude of the bias. The output of the LEW regional hydrological model (cf. Sect. 4) covers the whole area of Southern Africa enabling averaging over the areas in the range of $10^5 - 10^7 \text{ km}^2$. Gaussian spatial filters with correlation lengths of 600 km, 800 km, and 1000 km have been used and the bias has been computed for each filter.

The output covers the period January 2003 until March 2006. Water storage variations over the area shown in Fig. 4 have been used to compute the bias. A potential contribution to the bias of water storage variations outside this area has been neglected. This is justified because (i) the contribution of oceans and atmosphere have already been removed by GFZ prior to the estimation of monthly GRACE models; (ii) the continental areas are outside the significant support of the filter function for the upper Zambezi, Zambezi, and upper Zambezi + Okavango target areas. This does not hold for the Zambezi + Congo target area. Therefore, we expect some errors in the estimated bias for this target area caused by unmodelled mass variations North to the area shown in Fig. 4. We expect that these errors are small as there are little water storage variations in this part of Africa.

5.1 Bias estimate from LEW

Monthly bias estimates have been computed from the output of LEW using Eq. (1). The computations have been done for each target area and choice of the Gaussian filter correlation

Table 1. Amplitudes of the annual bias for different target areas, computed from LEW model output. Annual amplitudes of (unfiltered) LEW water storage variations and bias-to-signal-ratio are given for comparison.

σ_0	bias [mm]	\bar{f}_0 from LEW [mm]	rel.bias[%]
Gauss, 1000 km			
UPZ	73	155	47
Z	61	133	46
UPZO	50	120	42
ZC	22	71	31
Gauss, 800 km			
UPZ	55	155	35
Z	46	133	35
UPZO	39	120	33
ZC	15	71	21
Gauss, 600 km			
UPZ	36	155	23
Z	30	133	23
UPZO	28	120	23
ZC	8	71	11

length. Figure 4 shows the bias time series for the four target areas and 1000 km Gaussian smoothing. From the time series of monthly bias values, the amplitude of the annual bias can be computed. The results are shown in Table 1 for each target area and the three Gaussian filters.

The following observations are made:

1. The bias-to-signal-ratio is significant. A comparison of Fig. 4 with 5 shows, that the monthly bias may even exceed the amplitude of the water storage variations (signal). This emphasizes the need to correct GRACE estimates of monthly mean water storage variations for the bias introduced by spatial smoothing. Otherwise it will not be possible to calibrate hydrological models using GRACE amplitude estimates.
2. The bias strongly depends on the correlation length of the filter: the smaller the correlation length, the smaller the bias. For instance, moving from 1000 km to 600 km reduces the annual bias amplitude of the upper Zambezi target area from 73 mm to 36 mm, i.e. by about 50%. However, simply reducing the filter correlation length is not the solution to the problem. Even for 600 km, the bias-to-signal-ratio is still very large. Moreover, the choice of a shorter filter correlation length increases the noise in GRACE water storage amplitudes.
3. The bias and the bias-to-signal-ratio depend on the size of the target area: the smaller the target area, the

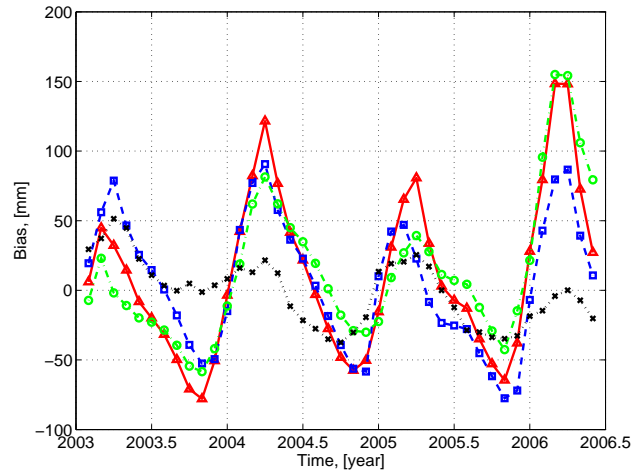


Fig. 4. Bias as a function of time between January 2003 and March 2006 for four target areas: upper Zambezi (red triangles), Zambezi (blue squares), upper Zambezi + Okavango (green circles) and Zambezi + Congo (black x-marks). 1000 km Gaussian smoothing has been used.

larger the bias and the bias-to-signal ratio. For instance, for the smallest target area, the upper Zambezi (area $\approx 4.7 \times 10^5 \text{ km}^2$), the amplitude of the annual bias is 47% of the annual water storage variation when 1000 km Gaussian smoothing is applied. For the largest area, the Zambezi + Congo, (area $\approx 5.2 \times 10^6 \text{ km}^2$), the annual bias reduces to about 31% of the annual water storage variation.

5.2 Bias-corrected GRACE estimates versus LEW model output

The estimated bias can be used to correct GRACE monthly mean water storage variations. We used 31 release RL03 monthly GRACE gravity field models between January 2003 and March 2006 provided by GFZ. The degree 1 coefficients and the degree 2 zonal coefficient have been excluded from the analysis, which corresponds to the currently adopted procedure. This leads to minor errors in the GRACE monthly mean water storage variations for the target areas considered in this study. From the time-series of monthly gravity field models, monthly water storage variations have been computed following the procedure of Swenson and Wahr (2002). These estimates have been corrected then for the bias. For this purpose, the bias estimates, computed from the LEW model output, have been spline interpolated to the time epochs of the monthly GRACE models. Finally, the annual water storage variation has been computed for the biased and bias-corrected GRACE estimates and compared with the annual water storage from LEW. The results are summarized in Table 2.

Table 2. Amplitude of the annual water storage variation. [1]: GRACE estimate, [2]: annual bias, [3]: bias-corrected GRACE, [4]: LEW model output, [5]: difference between bias-corrected GRACE and LEW model output.

target area	[1]	[2]	[3] = [1] + [2]	[4]	[5] = [3] – [4]
Gauss filter, 1000 km					
UPZ	82	73	155	155	0
Z	83	61	144	133	11
UPZO	68	50	118	120	-2
ZC	33	22	55	71	-16
Gauss filter, 800 km					
UPZ	102	55	157	155	2
Z	100	46	146	133	13
UPZO	80	39	119	120	-1
ZC	40	15	55	71	-16
Gauss filter, 600 km					
UPZ	124	36	160	155	5
Z	117	30	147	133	14
UPZO	91	28	119	120	-1
ZC	47	8	55	71	-16

Table 3. Statistics of the differences between GRACE monthly estimates and LEW model output before and after bias correction.

area	GRACE – LEW			GRACE _{corr} – LEW		
	min	max	RMS	min	max	RMS
Gauss filter, 1000 km						
UPZ	0.4	198.0	68.0	0.3	52.0	25.0
Z	1.4	125.0	48.0	1.5	49.0	27.0
UPZO	1.6	197.0	59.0	1.5	50.0	24.0
ZC	1.5	81.0	35.0	0.0	57.0	20.0
Gauss filter, 800 km						
UPZ	0.8	174.0	56.0	0.3	61.0	28.0
Z	3.0	106.0	38.0	2.0	58.0	32.0
UPZO	0.0	177.0	52.0	0.3	56.0	26.0
ZC	0.4	80.0	31.0	0.2	66.0	22.0
Gauss filter, 600 km						
UPZ	0.2	135.0	45.0	7.0	69.0	33.0
Z	1.1	82.0	31.0	1.3	67.0	37.0
UPZO	2.8	147.0	46.0	0.4	59.0	28.0
ZC	1.1	80.0	29.0	1.0	75.0	24.0

A remarkable result is that bias-corrected GRACE estimates of the *annual* and the *monthly* mean water storage variations fit significantly better with LEW estimates than uncorrected GRACE estimates (cf. Table 2). For instance, when using 1000 km Gaussian smoothing, the annual difference re-

duces from 73 mm to 0 mm for the upper Zambezi, from 50 to 11 for the Zambezi, from 52 to –2 for the upper Zambezi + Okavango and from 38 to –16 for the Zambezi + Congo area. The annual differences do not depend on the choice of the filter correlation length. Monthly differences between bias-corrected GRACE and LEW are larger than annual differences, in particular in the wet seasons and for small target areas (cf. Fig. 5).

Table 3 gives some statistical information about the differences between the amplitudes of *monthly* mean water storage variations from GRACE and LEW model output. It is remarkable that the fit with LEW is the best for a filter correlation length of 1000 km; smaller filter correlation lengths lead to larger RMS differences between bias-corrected GRACE and LEW. This can be explained by the fact that filter correlation lengths smaller than 1000 km do not sufficiently suppress the noise in GRACE monthly gravity fields; after bias correction, the noise is still dominant and causes a larger misfit between GRACE and LEW. An extreme situation is the Zambezi target area for a 600 km Gaussian filter. After bias correction, the RMS difference between GRACE and LEW *increases* from 31 mm to 37 mm!

When a 1000 km Gaussian filter is used, we observe a significant improvement by 44% and 63% of the fit between monthly GRACE and LEW amplitudes after bias correction for all target areas. This is also visible in Fig. 5, which shows the time series of monthly mean water storage variations. The largest difference between LEW and bias-corrected GRACE is attained in spring 2004, whereas the differences in spring 2005 and spring 2006 are significantly

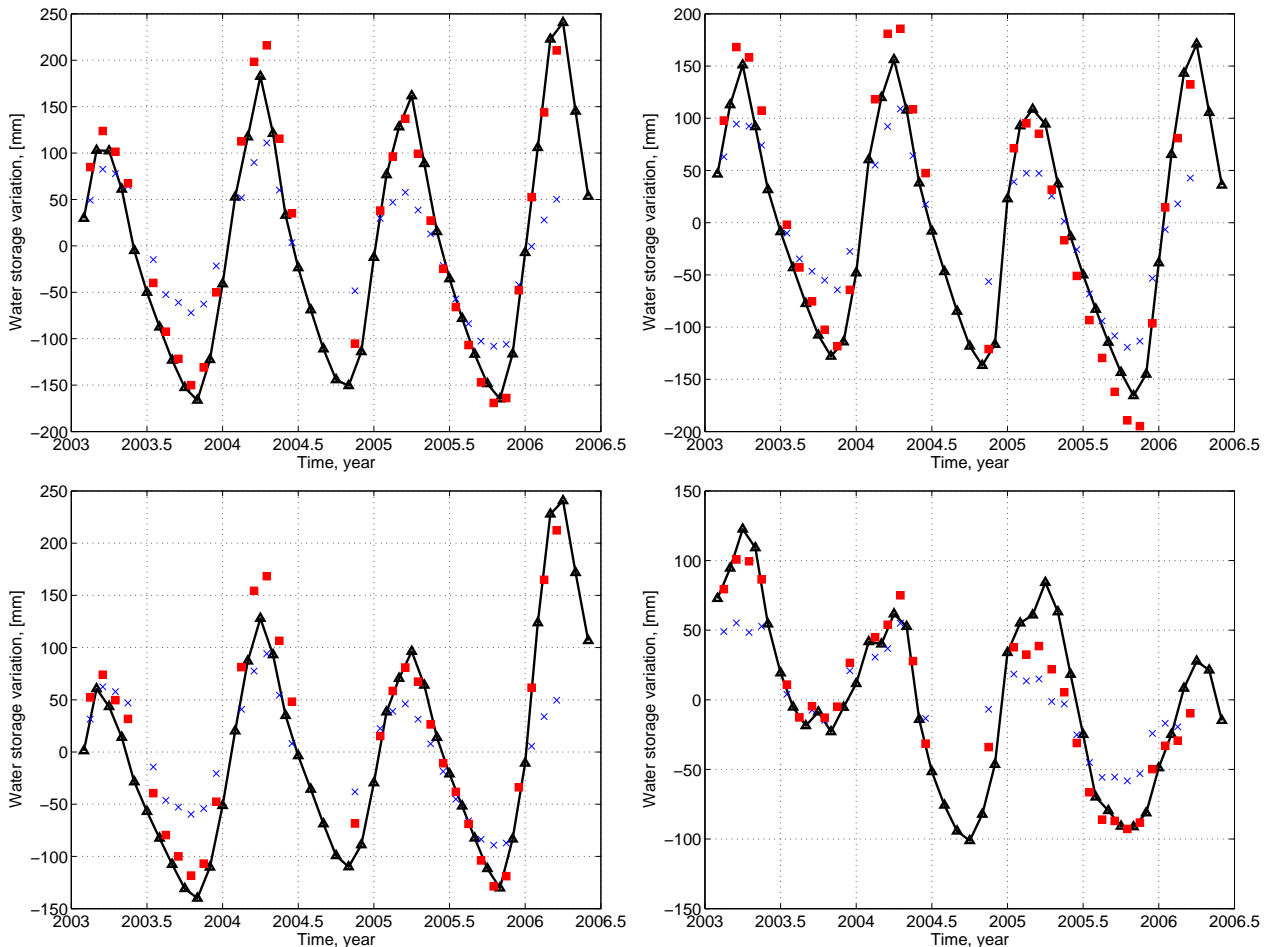


Fig. 5. Time series of monthly mean water storage variations over the target areas: From left to right and top to bottom: upper Zambezi, Zambezi, upper Zambezi + Okavango, and Zambezi + Congo. A 1000 km Gaussian filter has been used. Black triangles: unfiltered LEW; blue x-marks: biased GRACE; red boxes: bias-corrected GRACE.

smaller. The reason for the large difference in spring 2004 is not clear yet. It could be attributed to either the LEW model or the GRACE data. For instance, a poor quality of rainfall input data from the beginning of 2004 could cause significant errors in the LEW model output. This would also propagate into the computed bias. Alternatively, it is possible that GRACE did not capture the water storage variation over the target areas very well in spring 2004, due to a poor orbit geometry (Winsemius et al., 2006b). This would cause an additional bias in GRACE monthly amplitudes, which cannot be corrected for.

The maximum difference between bias-corrected GRACE and LEW monthly amplitudes (57 mm for 1000 km Gaussian smoothing) is observed in the Zambezi + Congo area, which is the largest target area. At the first glance, this is unexpected as the bias is the smallest for this area and the quality of GRACE should improve with increasing size of the target area. We explain this with the poorer performance of the

LEW model, which does not provide good estimates of water storage variations in the areas North to the Zambezi + Congo target area (cf. Figs. 4 and 3). This information is needed to get a good estimate of the bias, as mass variations outside the target area contribute to the bias according to Eq. (1). The poorer performance of LEW may be a consequence of the poor coverage of this area with gauge stations, which causes a bias in the rainfall data.

Chen et al. (2007) report significant phase shifts up to 10 deg for some areas after spatial smoothing is applied. For the four target areas in Southern Africa, the phases of the water storage variations from the bias-corrected GRACE and (unfiltered) LEW model output fit quite well. The annual phase difference is maximum for the upper Zambezi + Okavango target area (0.25 months or 7.5 deg); for the other target areas, the annual phase difference is below 0.1 months (or 3 deg).

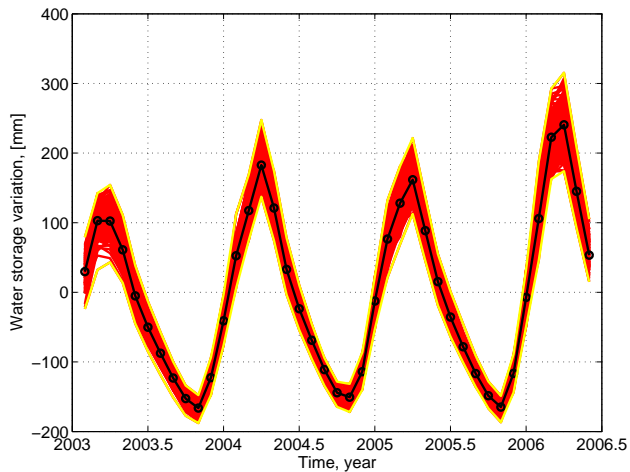


Fig. 6. Water storage variations (in red) averaged over the upper Zambezi basin from the Monte Carlo simulation (200 realizations, 30% noise in rainfall numbers). Mean water storage is given in black.

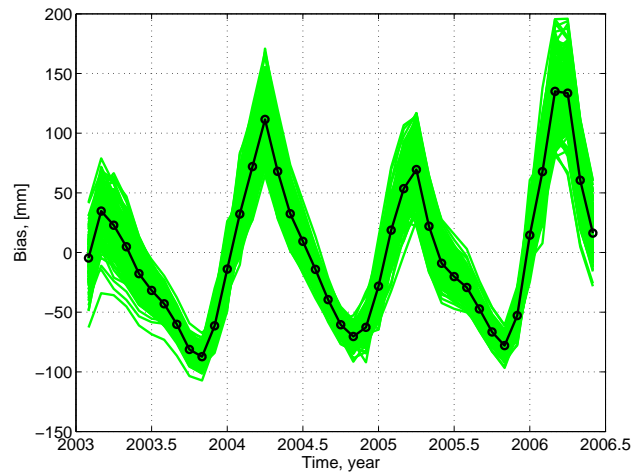


Fig. 7. Time variable bias (in green) averaged over the upper Zambezi target area from a Monte Carlo simulation (200 realizations, 30% noise in rainfall numbers). Mean bias is given in black.

5.3 Bias, bias uncertainty, and the role of the hydrological model

In this section, we want to address two questions:

1. The computation of the bias in GRACE monthly mean water storage variations requires knowledge about the water storage variations inside and outside the target area. This information is, of course, not available as otherwise there would be no need to use GRACE. In practice, only some a priori information about the water storage variations may be available, e.g. from a hydrological model. Uncertainties in the a priori information propagates into the estimated bias. Therefore, the question is how changes in the hydrological model output propagate into the bias estimates.
2. In the analysis done before, the same hydrological model (LEW) is used for bias computation and for comparison with GRACE. We concluded that after bias correction, the fit between LEW and GRACE improves significantly. Therefore, one may ask whether the fit is less if another hydrological model is used to compute the bias.

A thorough answer to the first question requires an assessment of the uncertainty of the LEW hydrological model. This is extremely complex and out of the scope of this study. Therefore, a more simplistic approach is followed, which is based on the fact that the rainfall data are the most significant (but not the only) source of uncertainty of the output of LEW for South Africa. Therefore, we generated a series of alternative water storage variations over the target areas

using a Monte-Carlo simulation. This series have been obtained by changing the input rainfall data to LEW randomly. That is, the rainfall data were superimposed by a zero mean Gaussian white noise with a standard deviation of 30% of the rainfall numbers. 200 noise realizations have been generated for each time step. For each set of rainfall data, the LEW model has been run, which yields water storage variation estimates for the area shown in Fig. 4 for the period January 2003 until March 2006. These estimates have been used to compute a time series of the bias for the period January 2003 until March 2006. From the 200 realizations, a mean bias and a RMS bias have been computed for each time step.

Figures 6 and 7 show the 200 monthly mean water storage variations and the estimated bias time series, respectively, for the upper Zambezi target area. The RMS bias shows a significant yearly pattern, which is in phase with the rainfall pattern. That is, the largest RMS values are attained during the wet season, i.e. in spring each year. In fall, the uncertainties are much smaller, because there is almost no rainfall.

For the upper Zambezi area and a 1000 km Gaussian filter, the maximum RMS bias is attained in spring 2006 (27 mm) (cf. Fig. 8); the annual RMS bias is 15 mm. This is much smaller than the 73 mm difference of the annual amplitude of water storage variation between LEW and (uncorrected) GRACE (cf. Table 2, UPZ, column [1] and [4]). Therefore, the Monte Carlo experiment indicates that even relatively uncertain information about mass variations is helpful to reduce the bias significantly.

In order to address the second question, we repeat the complete data analysis with the global hydrological model CPC-LDAS, and compared the results with the ones obtained with the LEW model. The land data assimilation system (LDAS) is one of the land surface models developed at

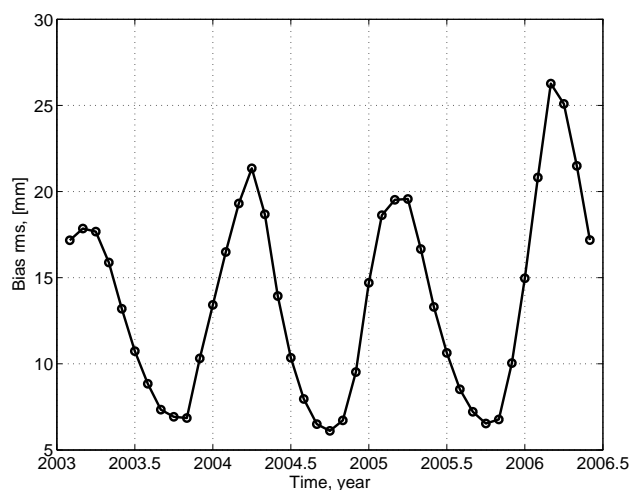


Fig. 8. RMS of the monthly bias caused by 30% noise in rainfall numbers for the upper Zambezi target area. 1000 km Gaussian smoothing applied.

NOAA Climate Prediction Center (CPC). It is forced by observed precipitation, derived from CPC daily and hourly precipitation analysis, downward solar and long-wave radiation, surface pressure, humidity, 2-m temperature and horizontal wind speed from NCEP reanalysis. The output consists of soil temperature and soil moisture in four layers below the ground. At the surface, it includes all components affecting energy and water mass balance, including snow cover, depth, and albedo. The data for the CPC-LDAS model are freely available on the INTERNET (CPC, a,b). No data have been found after December 2005. Therefore, the comparison with LEW covers the period January 2003 until December 2005. The CPC-LDAS model has also been used in other GRACE studies, e.g. in Swenson et al. (2003); Wahr et al. (2004).

The following differences of water storage variations have been computed for the period January 2003 until December 2005:

- LEW minus (uncorrected) GRACE (referred to as LEW-GRACE)
- LEW minus (bias-corrected) GRACE; the bias is computed using LEW (referred to as LEW-GRACE/LEW)
- LEW minus (bias-corrected) GRACE; the bias is computed using CPC-LDAS (referred to as LEW-GRACE/CPC)
- CPC-LDAS minus (uncorrected) GRACE (referred to as CPC-GRACE)
- CPC-LDAS minus (bias-corrected) GRACE; the bias is computed using CPC-LDAS (referred to as LEW-GRACE/CPC)

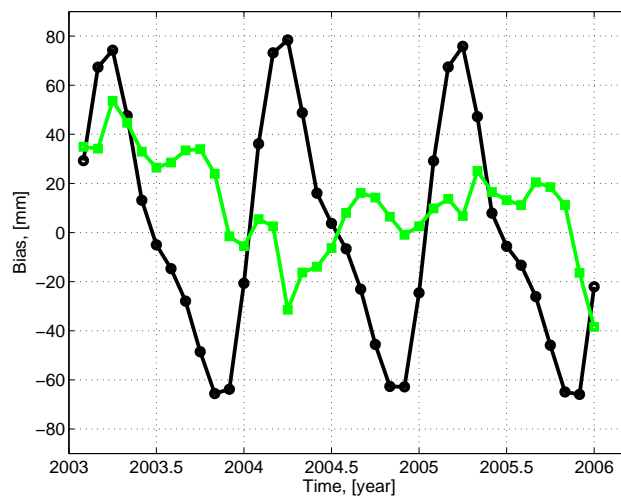


Fig. 9. Time series of bias estimates computed on the basis of the CPC-LDAS hydrological model (black circles) and the differences between the bias from CPC-LDAS and LEW (green squares) for the Upper Zambezi target area.

- CPC-LDAS minus (bias-corrected) GRACE; the bias is computed using LEW (referred to as CPC-GRACE/LEW)

The main results of this comparison are shown in Fig. 9 (comparison of the bias computed from LEW and CPC-LDAS, respectively, for the Upper Zambezi target area), Figs. 10 and 11 (time series of differences between LEW, CPC-LDAS, and GRACE for the Upper Zambezi target area), and Table 4 (RMS differences between LEW, CPC-LDAS, and GRACE for all target areas). They can be summarized as follows:

1. Bias estimates computed from LEW and CPC-LDAS show significant differences (cf. Fig. 9). For the period January 2003 until December 2005, the largest difference is 55 mm. It is attained during wet periods, i.e. when strong rainfall occurs. The RMS difference is about 15 mm. On the other hand, these differences are much smaller than the bias itself.
2. The differences LEW-GRACE/LEW and CPC-GRACE/CPC are significantly smaller than LEW-GRACE and CPC-GRACE, respectively. The same holds for the differences LEW-GRACE/CPC and CPC-GRACE/LEW compared with LEW-GRACE and CPC-GRACE, respectively. This indicates that bias correction really works for the target areas subject to this study.
3. The fit of a hydrological model with bias-corrected GRACE is overoptimistic if the same hydrological model is used to compute the bias. This is evident if one

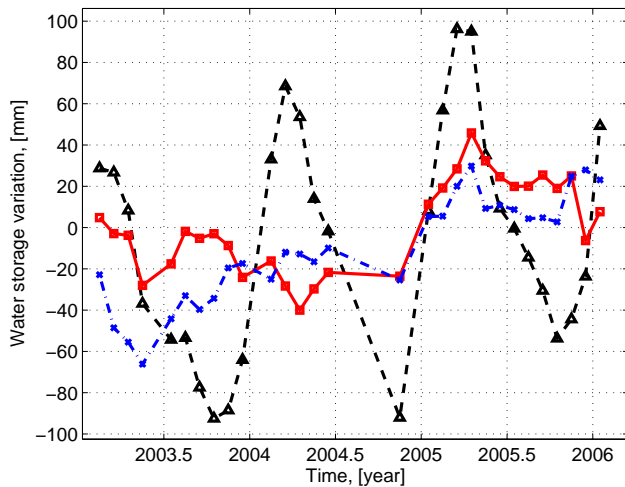


Fig. 10. Differences of water storage variations from LEW and GRACE for the period January 2003 until December 2005. Upper Zambezi target area. Gaussian filter with 1000 km correlation length. Black triangles: LEW – GRACE; red squares: LEW – GRACE/LEW; blue crosses: LEW-GRACE/CPC

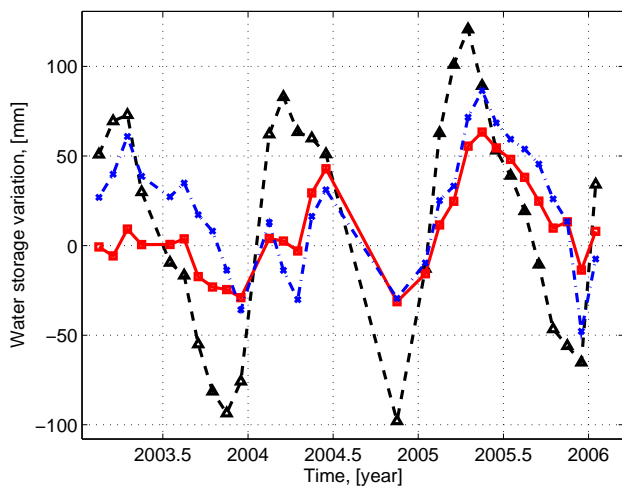


Fig. 11. Differences of water storage variations from CPC-LDAS and GRACE for the period January 2003 until December 2005. Upper Zambezi target area. Gaussian filter with 1000 km correlation length. Black triangles: CPC-LDAS – GRACE; red squares: CPC-LDAS – GRACE/CPC; blue crosses: CPC-LDAS – GRACE/LEW.

compares the RMS difference between GRACE/LEW and GRACE/CPC (which is in fact the difference of the bias as computed from LEW and CPC-LDAS), with the RMS difference between LEW-GRACE/LEW and CPC-GRACE/CPC. In this sense, one can say that the estimated bias is “biased” towards the hydrological model used. This makes it very difficult to decide what hydrological model better fits GRACE (or vice versa),

Table 4. Statistics of the differences between LEW and GRACE, and CPC and GRACE monthly estimates of the water storage. A Gaussian filter with 1000 km has been used.

RMS				
diff.	UPZ	Z	UPZO	ZC
Gauss filter, 1000 km				
LEW – GRACE	54.0	41.0	41.0	36.0
LEW – GRACE/LEW	22.0	26.0	18.0	19.0
LEW – GRACE/CPC	28.0	22.0	29.0	24.0
CPC – GRACE	65.0	41.0	72.0	34.0
CPC – GRACE/CPC	28.0	40.0	51.0	22.0
CPC – GRACE/LEW	40.0	56.0	57.0	35.0

and to draw conclusions about the noise in GRACE and hydrological model estimates of water storage variations after bias correction.

4. The difference LEW-GRACE is always smaller than the difference CPC-GRACE. That is, (uncorrected) GRACE better fits the LEW model output than the CPC-LDAS model output.
5. The difference LEW-GRACE/LEW is always smaller than CPC-GRACE/CPC.
6. The difference LEW-GRACE/CPC is always smaller than CPC-GRACE/LEW.

Items 4, 5, and 6 may be seen as an indicator of the superior quality of LEW compared with CPC-LDAS for the four target areas.

6 Conclusions

Spatial smoothing of GRACE monthly gravity field models introduces a significant bias in GRACE-estimated monthly mean water storage variations. For the four target areas considered in this study, the bias attains values between 50–70% of the total water storage variation. This confirms estimates reported in previous studies for other areas, (e.g. Chen et al., 2007). For most target areas in the world, GRACE always underestimates the amplitudes of monthly mean water storage variations.

The bias strongly depends on the amplitude of the water storage variation inside and outside the target areas. Moreover, the size and shape of the target area also influence the amplitude of the bias. Generally, the larger the target area, the smaller the bias.

Without bias correction, it is hardly possible to enhance hydrological models using GRACE. To compute the bias, a

priori information about the mass variations inside and outside the target area is needed. This information can be provided for instance by hydrological models. Whether GRACE itself can be used as source of information in an iterative approach to bias estimation has to be investigated. In this study, the output of a regional hydrological model has been used successfully to estimate the bias. After bias correction, the annual amplitude differences of GRACE and regional hydrological model reduce to some millimeters.

Monthly amplitude differences may be significantly larger than annual differences, in particular during wet periods. There are two potential explanations: first of all, the LEW model does not perform well during these periods; this also effects the estimated bias. Secondly, GRACE does not capture the monthly water storage variation very well, which is caused by an unfavorable orbit geometry. However, the exceptionally large 30 mm amplitude difference for the Zambezi + Congo target area in spring 2004 is likely a result of a poor performance of the LEW model to estimate mass variations for the area North to the Zambezi + Congo target area.

We do not observe significant phase differences between GRACE and LEW. The maximum phase difference is 0.25 month (i.e. 7.5 deg) for the upper Zambezi + Okavango area; the phase difference for the other target areas is below 0.1 month (i.e. 3 deg).

The RMS of the bias due to 30% noise in rainfall numbers vary between 5 mm and 27 mm. Averaged over the period between January 2003 until March 2006, this is about 20% of the amplitude of the water storage variation. The assumption of 30% noise in rainfall data is rather pessimistic, although there are other contributors to the error budget of LEW water storage estimates, which propagate into the estimated bias. Therefore, it should be possible to obtain good estimates of the bias even if the quality of the a priori information about mass variations inside and outside the target area is relatively poor. The question of bias estimability using a priori information about mass variations, however, depends on the location of the target area and has to be addressed on a case-by-case basis.

For the target areas subject to this study, bias correction improves significantly the quality of GRACE estimates of water storage variations, independently whether LEW or CPC-LDAS is used to compute the bias. As bias estimates are biased towards the hydrological model used to compute the bias, the fit between a hydrological model and bias-corrected GRACE is too optimistic.

The study limits to the application of isotropic Gaussian smoothing. When using other filter functions, e.g. non-isotropic filters or Wiener filters, the bias is likely to be smaller. Nevertheless, the need to apply a bias correction is still there. The ability to compute the bias depends on the location of the target area and the availability of a priori information about mass variations inside and outside the target area. The question whether GRACE can be used in an iter-

ative approach to provide this information as alternative to hydrological models is left open for future studies.

Appendix A

Suppose the function f describes the monthly mean mass variations on Earth. Let σ_0 be our target area (e.g. a river basin) and σ_R the mean surface of the Earth, represented as a sphere with radius R . The mean value of the function f over σ_0 is

$$\bar{f}_0 = \frac{1}{\sigma_0} \int_{\sigma_0} f \, d\sigma_R. \tag{A1}$$

Introducing the characteristic function of the target area

$$\chi = \begin{cases} \frac{4\pi R^2}{\sigma_0} & \text{in } \sigma_0 \\ 0 & \text{in } \sigma_R - \sigma_0 \end{cases},$$

we can write Eq. (A1) as

$$\bar{f}_0 = \frac{1}{4\pi R^2} \int_{\sigma_R} f \chi \, d\sigma_R. \tag{A2}$$

The true monthly mean mass variation function f is of course unknown; from GRACE monthly gravity field solutions, we can obtain an estimate \hat{f} . With

$$f = \hat{f} + \varepsilon_f,$$

this estimate is

$$\bar{f}_0 = \frac{1}{4\pi R^2} \int_{\sigma_R} \hat{f} \chi \, d\sigma_R + \frac{1}{4\pi R^2} \int_{\sigma_R} \varepsilon_f \chi \, d\sigma_R. \tag{A3}$$

The second term on the right-hand side of Eq. (A3) describes the error of the GRACE estimate of the monthly mean mass variation averaged over the target area. In reality, this term is very large, and the standard procedure to reduce it is to apply spatial smoothing with a filter W_s ,

$$\hat{f}_s = \frac{1}{4\pi R^2} \int_{\sigma_R} \hat{f} W_s \, d\sigma_R.$$

Correspondingly, \hat{f}_s instead of \hat{f} is used to compute the monthly mean mass variation averaged over the target area according to

$$\hat{f}_0 = \frac{1}{4\pi R^2} \int_{\sigma_R} \hat{f}_s \chi \, d\sigma_R.$$

Often (but not necessarily), the spatial filter (smoother) W_s is an isotropic function on the sphere, e.g. a Gaussian. The true monthly mean mass variation averaged over the target area is

$$\begin{aligned} \bar{f}_0 &= \hat{f}_0 \\ &+ \frac{1}{4\pi R^2} \int_{\sigma_R} (f - f_s) \chi \, d\sigma_R + \frac{1}{4\pi R^2} \int_{\sigma_R} \varepsilon_{f_s} \chi \, d\sigma_R, \end{aligned} \tag{A4}$$

where $f_s = \hat{f}_s + \varepsilon_{f_s}$ and ε_{f_s} is the error of \hat{f}_s . The first term on the right-hand side of Eq. (A4) is the estimate we obtain from GRACE monthly gravity models. The last two terms describe the error. The first error term is the error introduced by the spatial smoothing; the second error term describes how GRACE errors propagate into the smoothed mass variation function \hat{f}_s . The spatial smoothing only makes sense (i.e. is successful) if

$$\left| \int_{\sigma_R} (f - f_s) \chi \, d\sigma_R + \int_{\sigma_R} \varepsilon_{f_s} \chi \, d\sigma_R \right| < \left| \int_{\sigma_R} \varepsilon_f \chi \, d\sigma_R \right|.$$

With

$$W := \frac{1}{4\pi R^2} \int_{\sigma_R} W_S \chi \, d\sigma_R,$$

it can easily be shown that

$$\hat{f}_0 = \frac{1}{4\pi R^2} \int_{\sigma_R} \hat{f} W \, d\sigma_R, \tag{A5}$$

and

$$\begin{aligned} \bar{f}_0 = \hat{f}_0 \\ + \frac{1}{4\pi R^2} \int_{\sigma_R} f (\chi - W) \, d\sigma_R + \frac{1}{4\pi R^2} \int_{\sigma_R} \varepsilon_f W \, d\sigma_R. \end{aligned} \tag{A6}$$

The second term on the right-hand side of Eq. (A6),

$$\bar{\varepsilon}_0 := \frac{1}{4\pi R^2} \int_{\sigma_R} f (\chi - W) \, d\sigma_R, \tag{A7}$$

is the bias in the monthly mean mass variation averaged over the target areas that is caused by spatial smoothing. The bias can be interpreted as the error we introduce when using the filter W instead of the characteristic function χ . That is, using W reduces GRACE-related errors, but introduces at the same time a bias in the monthly mean mass variation estimate. To balance these errors is the subject of the choice of an optimal filter. This is not addressed here; for details about the optimal choice of a filter, we recommend (Swenson and Wahr, 2002) and (Han et al., 2005). To analyze the bias $\bar{\varepsilon}_0$, we first write

$$f = \begin{cases} f_0 & \text{in } \sigma_0 \\ f_l & \text{in } \sigma_R - \sigma_0 \end{cases},$$

and obtain a decomposition of $\bar{\varepsilon}_0$ into two parts:

$$\begin{aligned} \bar{\varepsilon}_0 = \frac{1}{4\pi R^2} \int_{\sigma_0} f_0 (\chi - W) \, d\sigma_R \\ + \frac{1}{4\pi R^2} \int_{\sigma_R - \sigma_0} f_l (\chi - W) \, d\sigma_R. \end{aligned} \tag{A8}$$

The type 2 error can be re-written, when taking into account that $\chi=0$ in $\sigma_R - \sigma_0$. Then,

$$\int_{\sigma_R - \sigma_0} f_l (\chi - W) \, d\sigma_R = - \int_{\sigma_R - \sigma_0} f_l W \, d\sigma_R.$$

Now, the true monthly mean mass variation averaged over the target area can be written as

$$\bar{f}_0 = \hat{f}_0 + \varepsilon_1 + \varepsilon_2 + \varepsilon_3,$$

where \hat{f}_0 is the GRACE estimate (cf. Eq. (A5)), and

$$\begin{aligned} \varepsilon_1 &= \frac{1}{4\pi R^2} \int_{\sigma_0} f_0 (\chi - W) \, d\sigma_R \\ \varepsilon_2 &= - \frac{1}{4\pi R^2} \int_{\sigma_R - \sigma_0} f_l W \, d\sigma_R \\ \varepsilon_3 &= \frac{1}{4\pi R^2} \int_{\sigma_R} \varepsilon_f W \, d\sigma_R. \end{aligned}$$

describe the errors, with the bias $\bar{\varepsilon}_0 = \varepsilon_1 + \varepsilon_2$.

Many authors account for the errors in the estimated amplitudes of the monthly mean water storage variation over the target area, by changing the correlation length of the filter W_s such that the GRACE water storage amplitudes fit best in a least-squares sense the amplitudes of a global hydrological model on a global scale. For a Gaussian filter function, this gives a filter correlation length of about 800 km for the routinely used global hydrological models GLDAS. This approach is certainly weaker than the approach by Velicogna and Wahr (2006), although in this way, errors in the global hydrological model may average out a little bit. Anyway, the best one can obtain then is a global scale factor; scale factors for specific regions of interest may significantly differ from the global one.

Velicogna and Wahr (2006) followed another approach. They introduced a scale factor λ , defined as

$$\lambda = \frac{\int_{\sigma_R} f \chi \, d\sigma_R}{\int_{\sigma_R} f W \, d\sigma_R},$$

and obtained an estimate $\hat{\lambda}$ of λ assuming that the mass variation function f is

$$f = \begin{cases} h = \text{constant} & \text{in } \sigma_0 \\ 0 & \text{in } \sigma_R - \sigma_0 \end{cases}.$$

The function h was assumed to be a layer of water with thickness 1 cm distributed over the target area. Then,

$$\hat{\lambda} = \frac{1}{\int_{\sigma_0} W \, d\sigma_R}.$$

Thereafter, the estimate $\hat{\lambda} \hat{f}_0$ was used as scale-corrected GRACE estimate of the monthly mean mass variation averaged over the target area. This simple approach of correcting GRACE water storage amplitudes for the bias is correct if there are no mass variations outside the target area. Only then, the scale factor does not depend on the amplitude of the mass variation inside the target area and the scale factor can

properly be determined by the assumption of a homogeneous mass layer of any thickness. However, if there are mass variations outside the target area, the estimated scale factor is erroneous. Then, the exact scale factor depends among others on the amplitude of the mass variation inside and outside the target area as shown in Eq. (1).

Acknowledgements. We would like to thank two anonymous reviewers for their valuable and very detailed comments, which helped us improving the manuscript significantly. Please refer to the online discussion: www.hydrol-earth-syst-sci-discuss.net/3/3557/2006/

The project is supported by the Dutch Organization for Scientific Research (NWO) and the Water Research Center Delft (WRCD). The support is greatly acknowledged. We are thankful for the GRACE data provided by GeoForschungsZentrum Potsdam (GFZ, Germany's National Research Centre for Geosciences); in particular we want to thank Dr. Frank Flechtner for his support to this study. The computations have been done partly on the SGI Origin 3800 and SGI Altix 3700 super computers in the framework of the grant SG-027, which is provided by "Stichting Nationale Computercapaciteiten" (NCF).

We greatly appreciate the collaboration with mr. Chris Chileshe from the Department of Water Affairs (Lusaka, Zambia), who has provided us with considerable discharge records of several locations within the Zambezi river basin. Second, we are grateful for the discharge records, gathered and provided by the Global Runoff Data Centre. Finally we would like to thank the Netherlands Organisation for Scientific Research for their contribution to our research.

Edited by: G. Pegram

References

- <http://www.csr.utexas.edu/research/ggfc/dataresources.html>, a.
<ftp://ftp.csr.utexas.edu/pub/ggfc/water/CPC/>, b.
- Chen, J. L., Rodell, M., Wilson, C., and Famiglietti, J. S.: Low degree spherical harmonic influences on Gravity Recovery and Climate Experiment (GRACE) water storage estimates, *Geophys. Res. Lett.*, 32, L14 405, doi:10.1029/2005GL022964, 2005a.
- Chen, J. L., Wilson, C. R., Famiglietti, J. S., and Rodell, M.: Spatial sensitivity of the Gravity Recovery and Climate Experiment GRACE time-variable gravity observations, *J. Geophys. Res.*, 110, B08408, doi:10.1029/2004JB003536, 2005b.
- Chen, J. L., R. Wilson, C., Famiglietti, J. S., and Rodell, M.: Attenuation effect on seasonal basin-scale water storage change from GRACE time-variable gravity, *J. Geodesy*, 81, 237–245, 2007.
- Fenoglio-Marc, L., Kusche, J., and Becker, M.: Mass variation in the Mediterranean Sea from GRACE and its validation by altimetry, steric and hydrology fields, *Geophys. Res. Lett.*, 33, L19606, doi:10.1029/2006GL026851, 2006.
- Han, S. C., Shum, C. K., Jekeli, C., Kuo, C. Y., Wilson, C. R., and Seo, K. W.: Non-isotropic filtering of GRACE temporal gravity for geophysical signal enhancement, *Geophys. J. Int.*, 163, 18–25, 2005.
- Herman, A., Kumar, V. B., Arkin, P. A., and Kousky, J. V.: Objectively determined 10-day African rainfall estimates created for Famine Early Warning Systems, *Int. J. Remote Sensing*, 18, 2147–2159, 1997.
- Jekeli, C.: Alternative methods to smooth the Earth's gravity field., Tech. rep., Department of Geodetic Science, Ohio State University, Columbus, Ohio, 1981.
- Klees, R., Zapreeva, E. A., Savenije, H. H. G., and Winsemius, H. C.: Monthly mean water storage variations by the combination of GRACE and a regional hydrological model: application to the Zambezi River Basin, *Proceedings Dynamic Planet 2005, Monitoring and Understanding a Dynamic Planet with Geodetic and Oceanographic Tools*, 2006.
- Monteith, J. L.: Evaporation and surface temperature, *Q. J. R. Meteorol. Soc.*, 107, 1–27, 1981.
- New, M., Lister, D., Hulme, M., and Makin, I.: A high-resolution data set of surface climate over global land areas, *Clim. Res.*, 21, 1–25, 2002.
- Penman, H. L.: Natural evaporation from open water, bare soil and grass, *Proc. Roy. Soc. London*, A193, 120–145, 1948.
- Swenson, S. and Wahr, J.: Methods for inferring regional surface-mass anomalies from Gravity Recovery and Climate Experiment (GRACE) measurements of time-variable gravity, *J. Geophys. Res.*, 107, 2193, doi:10.1029/2001JB000576, 2002.
- Swenson, S. and Wahr, J.: Post-processing removal of correlated errors in GRACE data, *Geophys. Res. Lett.*, 33, L08402, doi:10.1029/2005GL025285, 2006.
- Swenson, S., Wahr, J., and Milly, P. C. D.: Estimated accuracies of regional water storage variations inferred from the Gravity Recovery and Climate Experiment (GRACE), *Water Resour. Res.*, 39, 1223, doi:10.1029/2002WR001808, 2003.
- Velicogna, I. and Wahr, J.: Measurements of time-variable gravity show mass loss in Antarctica, *Science*, 311, 1754–1756, 2006.
- Wahr, J., Molenaar, M., and Bryan, F.: Time variability of the earth's gravity field: Hydrological and oceanic effects and their possible detection using GRACE, *J. Geophys. Res.*, 103, 30 205–30 230, 1998.
- Wahr, J., S. Swenson, Zlotnicki, V., and Velicogna, I.: Time-variable gravity from GRACE: First results, *Geophys. Res. Lett.*, 31, L11 501, doi:10.1029/2004GL019779, 2004.
- Wahr, J., Swenson, S., and Velicogna, I.: Accuracy of GRACE mass estimates, *Geophys. Res. Lett.*, 33, L06401, doi:10.1029/2005GL025305, 2006.
- Winsemius, H. C., Savenije, H. H. G., Gerrits, A. M. J., Zapreeva, E. A., and Klees, R.: Comparison of two model approaches in the Zambezi river basin with regard to model confidence and identifiability, *Hydrol. Earth Syst. Sci.*, 10, 339–352, 2006a.
- Winsemius, H. C., Savenije, H. H. G., van de Giessen, N., van de Hurk, B., Zapreeva, E. A., and Klees, R.: Validation of GRACE temporal signature with a hydrological model of the upper Zambezi, *Water Resour. Res.*, 42, W12201, doi:10.1029/2006WR005192, 2006b.