



HAL
open science

Simulating mixed-phase Arctic stratus clouds: sensitivity to ice initiation mechanisms

I. Sednev, S. Menon, G. Mcfarquhar

► **To cite this version:**

I. Sednev, S. Menon, G. Mcfarquhar. Simulating mixed-phase Arctic stratus clouds: sensitivity to ice initiation mechanisms. *Atmospheric Chemistry and Physics Discussions*, 2008, 8 (3), pp.11755-11819. hal-00304263

HAL Id: hal-00304263

<https://hal.science/hal-00304263>

Submitted on 18 Jun 2008

HAL is a multi-disciplinary open access archive for the deposit and dissemination of scientific research documents, whether they are published or not. The documents may come from teaching and research institutions in France or abroad, or from public or private research centers.

L'archive ouverte pluridisciplinaire **HAL**, est destinée au dépôt et à la diffusion de documents scientifiques de niveau recherche, publiés ou non, émanant des établissements d'enseignement et de recherche français ou étrangers, des laboratoires publics ou privés.

**Simulating
mixed-phase Arctic
stratus clouds**

I. Sednev et al.

Simulating mixed-phase Arctic stratus clouds: sensitivity to ice initiation mechanisms

I. Sednev¹, S. Menon¹, and G. McFarquhar²

¹Dept. of Atmospheric Sciences, Lawrence Berkeley National Laboratory, Berkeley, CA, USA

²Dept. of Atmospheric Sciences, University of Illinois at Urbana-Champaign, Urbana, IL, USA

Received: 17 March 2008 – Accepted: 8 April 2008 – Published: 13 June 2008

Correspondence to: I. Sednev (isednev@lbl.gov)

Published by Copernicus Publications on behalf of the European Geosciences Union.

Title Page

Abstract

Introduction

Conclusions

References

Tables

Figures

◀

▶

◀

▶

Back

Close

Full Screen / Esc

Printer-friendly Version

Interactive Discussion



Abstract

The importance of Arctic mixed-phase clouds on radiation and the Arctic climate is well known. However, the development of mixed-phase cloud parameterization for use in large scale models is limited by lack of both related observations and numerical studies using multidimensional models with advanced microphysics that provide the basis for understanding the relative importance of different microphysical processes that take place in mixed-phase clouds. To improve the representation of mixed-phase cloud processes in the GISS GCM we use the GISS single-column model coupled to a bin resolved microphysics (BRM) scheme that was specially designed to simulate mixed-phase clouds and aerosol-cloud interactions. Using this model with the microphysical measurements obtained from the DOE ARM Mixed-Phase Arctic Cloud Experiment (MPACE) campaign in October 2004 at the North Slope of Alaska, we investigate the effect of ice initiation processes and Bergeron-Findeisen process (BFP) on glaciation time and longevity of single-layer stratiform mixed-phase clouds. We focus on observations taken during 9th–10th October, which indicated the presence of a single-layer mixed-phase clouds. We performed several sets of 12-h simulations to examine model sensitivity to different ice initiation mechanisms and evaluate model output (hydrometeors' concentrations, contents, effective radii, precipitation fluxes, and radar reflectivity) against measurements from the MPACE Intensive Observing Period. Overall, the model qualitatively simulates ice crystal concentration and hydrometeors content, but it fails to predict quantitatively the effective radii of ice particles and their vertical profiles. In particular, the ice effective radii are overestimated by at least 50 %. However, using the same definition as used for observations, the effective radii simulated and that observed were more comparable. We find that for the single-layer stratiform mixed-phase clouds simulated, process of ice phase initiation due to freezing of supercooled water in both saturated and undersaturated (w.r.t. water) environments is as important as primary ice crystal origination from water vapor. We also find that the BFP is a process mainly responsible for the rates of glaciation of simulated clouds.

ACPD

8, 11755–11819, 2008

Simulating mixed-phase Arctic stratus clouds

I. Sednev et al.

Title Page

Abstract

Introduction

Conclusions

References

Tables

Figures

◀

▶

◀

▶

Back

Close

Full Screen / Esc

Printer-friendly Version

Interactive Discussion



These glaciation rates cannot be adequately represented by a water-ice saturation adjustment scheme that only depends on temperature and liquid and solid hydrometeors' contents as is widely used in bulk microphysics schemes and are better represented by processes that also account for supersaturation changes as the hydrometeors grow.

1 Introduction

The surface energy budget over the Arctic ice pack is determined to a large extent by radiative fluxes that in turn are strongly dependent on the presence of clouds. Low-level Arctic clouds contribute about the half of the total cloud fraction throughout the year due to their persistence and horizontal extent (e.g., [Curry and Ebert, 1992](#)). The vertical structure and radiative properties of these persistent low-level clouds depend on their microphysics, and thus estimation of the relative significance of the microphysical processes that occur in these clouds is important.

An efficient method to investigate the role of different microphysical processes that determine the microphysical and radiative cloud properties is the utilization of multidimensional cloud models with bin resolved microphysics (BRM). There are many BRM cloud models that are “warm” rain models (e.g., [Cotton, 1972a](#); [Ogura and Takahashi, 1973](#); [Clark, 1973](#); [Tzviou et al., 1989](#); [Bott et al., 1990](#); [Kogan, 1991](#); [Kogan et al., 1995](#); [Stevens et al., 1996](#)). To account for the ice phase several BRM cloud models use one size distribution function to describe cloud ice (e.g., [Hall, 1980](#); [Sednev and Khain, 1994](#); [Khvorostyanov and Sassen, 1998](#); [Ovtchinnikov and Kogan, 2000](#)). In these models only one type of solid hydrometeors that is ice crystals is considered or the bins with the smallest ice sizes are assigned to ice crystals while the rest of bins are interpreted as graupel. The ability of these models to simulate realistically microphysical processes in mixed-phase clouds is limited to situations when the processes of precipitation formation do not play a key role. It is difficult to expect that solid cloud hydrometeors, whose bulk densities and terminal velocities vary widely ([Macklin, 1962](#)), can be described adequately by one distribution function. Only a few BRM models use

Simulating mixed-phase Arctic stratus clouds

I. Sednev et al.

Title Page

Abstract

Introduction

Conclusions

References

Tables

Figures



Back

Close

Full Screen / Esc

Printer-friendly Version

Interactive Discussion



**Simulating
mixed-phase Arctic
stratus clouds**I. Sednev et al.

[Title Page](#)[Abstract](#)[Introduction](#)[Conclusions](#)[References](#)[Tables](#)[Figures](#)[⏪](#)[⏩](#)[◀](#)[▶](#)[Back](#)[Close](#)[Full Screen / Esc](#)[Printer-friendly Version](#)[Interactive Discussion](#)

designated distribution functions for different types of ice hydrometeors and calculate growth rates of microphysical processes due to several transformations of liquid and solid hydrometeors in mixed-phase clouds (Cotton, 1972b; Scott and Hobbs, 1977; Chen and Lamb, 1994b; Khain and Sednev, 1996; Reisin et al., 1996a; Takahashi and Shimura, 2004). As a rule these models also include a budget equation for the size distribution function for aerosol particles (AP) that can be of different chemical composition. The values of supersaturation calculated in the course of model integration are used to determine the size of APs to be activated, and the corresponding spectrum of newborn cloud droplets are directly calculated. It is thought that despite high computational costs these mixed-phase cloud microphysical models provide more accurate simulations of cloud-aerosol interactions and processes of precipitation formation in mixed-phase clouds than models with simpler ice schemes (Lynn et al., 2005).

Cloud models with BRM schemes were successfully used for the investigation of separate microphysical processes (e.g., Takahashi, 1976; Reisin et al., 1996b; Ovtchinnikov et al., 2000) and cloud chemistry (e.g., Flossman et al., 1985), effects of cloud microphysics on spatial redistribution of precipitation in the coastal zones (Khain and Sednev, 1996), simulation of wintertime orographic clouds (Chen and Lamb, 1999) and stratiform clouds and their radiative effects (Rasmussen et al., 2002), simulation of cloud seeding (Sednev and Khain, 1994; Reisin et al., 1996b; Yin et al., 2000a,b), and simulation of precipitation formation within a realistic mesoscale environment (Lynn et al., 2005).

Although Arctic mixed-phase low level clouds due to their existence throughout much of the year have important climatic impacts, the number of studies, in which BRM models are used for the investigation of microphysical characteristics of these clouds, is quite limited. Using a mixed-phase BRM scheme (Reisin et al., 1996a), which utilizes three distribution functions for the ice phase (crystals, snow, and graupel), coupled to a 2-D cloud resolving model, Harrington et al. (1999) studied model performance for idealized situations that mimic environmental conditions typical for the transition (spring and fall) Arctic season. A set of sensitivity runs was performed to reveal the

impact of different microphysical processes on glaciation time, longevity, stability, and radiative properties of simulated mixed-phase clouds. It was shown that environmental conditions have a strong impact on modeled cloud properties.

5 Recently an advanced 3-D LES model was used to quantify the role of different ice formation mechanisms in mixed-phase stratocumulus observed during MPACE (Fridlind et al., 2007). The BRM scheme utilized in this model includes sophisticated equations for ice nuclei (IN) that can be activated in the heterogeneous modes (contact, deposition, condensation, and immersion nucleation), formed due to water drop evaporation and scavenged by water droplets. Additional ice origination mechanisms
10 such as rime splintering, drop freezing during evaporation, shattering of drops during freezing, and fragmentation during ice-ice collisions are also considered. The model is able to reproduce persistent mixed-phase stratocumulus cloud decks as well as cloud microphysical properties (liquid and ice water content, droplet, and ice nuclei concentration profiles) within the observed ranges for particular combinations of ice formation mechanisms mentioned above. They found that glaciation time and longevity of mixed-phase MPACE clouds are determined by formation of ice nuclei due to water drop evaporation and drop freezing during evaporation, whereas processes of ice multiplication were less important.

20 There is a broad consensus that the ice initiation process is of crucial importance for the longevity of mixed-phase clouds. To study the ice initiation processes (IIP) through nucleation from water vapor and transformation of super-cooled liquid water, as well as the transformation of water vapor due to condensation/deposition, evaporation/sublimation, and the Bergeron-Findeisen process (BFP) in Arctic mixed-phase clouds, we use the BRM scheme (Khain and Sednev, 1995, 1996) coupled to the GISS SCM (Menon et al., 2003) called the GISS-LBL SCM. In our simulations of single-
25 layer stratiform mixed-phase clouds observed during the DOE ARM Mixed-Phase Arctic Cloud Experiment (MPACE) Intensive Observing Period (IOP) in October 2004 at the North Slope of Alaska (McFarquhar et al., 2007; Verlinde et al., 2007) with the GISS-LBL SCM, we consider two mechanisms of ice initiation. If liquid phase is not

Simulating mixed-phase Arctic stratus clouds

I. Sednev et al.

[Title Page](#)[Abstract](#)[Introduction](#)[Conclusions](#)[References](#)[Tables](#)[Figures](#)[◀](#)[▶](#)[◀](#)[▶](#)[Back](#)[Close](#)[Full Screen / Esc](#)[Printer-friendly Version](#)[Interactive Discussion](#)

**Simulating
mixed-phase Arctic
stratus clouds**I. Sednev et al.

[Title Page](#)[Abstract](#)[Introduction](#)[Conclusions](#)[References](#)[Tables](#)[Figures](#)[⏪](#)[⏩](#)[◀](#)[▶](#)[Back](#)[Close](#)[Full Screen / Esc](#)[Printer-friendly Version](#)[Interactive Discussion](#)

involved in IIP, we parameterize nucleation of ice crystals from water vapor as a function of supersaturation w.r.t. ice (SSI). Otherwise, ice crystal origination is considered to proceed via drop freezing, and its rate is a function of the shape of droplet distribution, water droplet mass and temperature. Once nucleated newborn crystals grow rapidly due to deposition/BFP. To treat the BFP bulk microphysics schemes use various modifications of the “saturation adjustment” assumption that mainly only temperature dependent and does not account for hydrometeors’ shapes and size distributions. As opposed to bulk microphysics schemes that use this oversimplified approach and, in fact, are not able to treat the BFP process adequately, the BRM scheme uses analytical solutions to solve equations for supersaturation w.r.t. water (SSW) and ice (SSI) taking into account the hydrometeors’ size distributions, densities, and shapes. Moreover, the BRM scheme takes into account supersaturation (SS) changes for the liquid/solid particle growth equations during the microphysical time step, thus providing a better representation of the BFP.

We briefly describe the GISS-LBL SCM in Sect. 2. Simulation setup is given in Sect. 3. The results of several sensitivity experiments and comparison to observations are presented in Sect. 4, and a summary and discussion are provided in Sect. 5. Finally, in Appendix A we outline some details of the BRM scheme that are relevant to this study.

2 Model description

In this study we use the GISS-LBL SCM that is a modified version of the GISS SCM (Menon et al., 2003) adapted from the GISS GCM. The cloud physics parameterizations in the GISS GCM is based on an assumption that only liquid or ice phase is permitted to exist at temperatures below freezing (Del Genio et al., 1996, 2005). This cloud scheme also has limited ability to represent cloud-aerosol interactions, relying on diagnostic calculations of cloud droplet concentration as a function of aerosol mass (Menon et al., 2002). To better account for effects of environmental conditions and mi-

Simulating mixed-phase Arctic stratus clouds

I. Sednev et al.

Title Page

Abstract

Introduction

Conclusions

References

Tables

Figures

◀

▶

◀

▶

Back

Close

Full Screen / Esc

Printer-friendly Version

Interactive Discussion



crophysical processes on cloud development and persistence several modifications to the GISS SCM have been done. These modifications include: 1) redesign of numerical algorithms used in the turbulence scheme and reformulation of the numerical surface boundary conditions; 2) implementation of a bin resolved microphysical (BRM) scheme that was specially designed to represent mixed-phase clouds.

The modified BRM scheme originally developed by [Khain and Sednev \(1995, 1996\)](#) directly solves integro-differential equations for distribution functions for seven hydrometeors' types and distribution function for aerosol particles (AP) and does not use assumptions regarding the shape of distribution functions. By solving the supersaturation equations that predict SSW and SSI, the BRM scheme permits realistic treatment of droplet activation using Köhler theory and a prognostic spectrum of aerosol particles that can be of different chemical composition. The BRM scheme takes into account numerous microphysical processes, some of which (IIP and BFP) are of special interest in this study. If liquid phase is not involved in ice initiation process, we parameterize nucleation of ice crystals from water vapor as a function of SSI ([Meyers et al., 1992](#)):

$$N_{mc} = N_{ms} \exp[A_{ms} + B_{ms} S_i] \quad (1)$$

where A_{ms} and B_{ms} are set to -0.639 and 12.96 , respectively, N_{ms} is ice nuclei (IN) concentration in $1/L$, and N_{mc} determines the upper limit of concentration, up to which ice crystals can be nucleated from water vapor at a particular point.

Water drop freezing that contribute to ice initiation is considered separately. The freezing probability is given by:

$$\frac{1}{f_1(m)} \frac{\partial f_1(m)}{\partial t} = \begin{cases} -A_f m \{ \exp[B_f T_{sup}] - 1 \}, & \text{if } T_{sup} > 0 \\ 0, & \text{if } T_{sup} \leq 0 \end{cases} \quad (2)$$

where $f_1(m)$ is droplet distribution function, m is the drop mass, $T_{sup} = T_f - T$ is the degree of supercooling, $T_f = 273.16$ K is temperature threshold value, $B_f = 0.66$ K $^{-1}$, and

**Simulating
mixed-phase Arctic
stratus clouds**

I. Sednev et al.

Title Page

Abstract

Introduction

Conclusions

References

Tables

Figures

◀

▶

◀

▶

Back

Close

Full Screen / Esc

Printer-friendly Version

Interactive Discussion



$A_f=0.1 \text{ kg}^{-1}$ is a constant. Because of the significant impact of the IIP and BFP on cloud glaciation time, we outline the numerical procedure that is used to calculate ice origination rates and the condensation/deposition and evaporation/sublimation rates of liquid and solid hydrometeors in saturated/undersaturated (w.r.t. water/ice) environments in Appendix A, where more details regarding the BRM scheme relevant to this study can also be found.

3 Simulation setup

The initial vertical profiles used to drive the SCM (36 levels with 25 mb resolution near the surface) are given by the idealized profiles from observations during the MPACE IOP. We use the large-scale forcing, horizontal velocity components, subsidence velocity, surface pressure, temperature, and fluxes as defined by Klein et al. (2007). We focus on Period B (17Z 9 October to 5Z 10 October) when single-layer stratocumulus mixed phase clouds with temperatures varying between -5°C and -20°C were observed. These clouds are characterized by persistent liquid phase with liquid water content (LWC) that increases with altitude reaching its maximum at the top of a well mixed boundary layer. Ice phase exists both in clouds and under the liquid cloud base. The typical values of liquid water path (LWP) and ice water path (IWP) are 200 g m^{-2} and 20 g m^{-2} , respectively. A detailed description of the environmental conditions and microphysical characteristics of observed clouds can be found in Klein et al. (2007).

In all our 12-h simulations (from 17Z 9 October to 5Z 10 October) the pressure P_s near the surface is 1010 hPa with constant sea surface temperature $T_s = 0.85^\circ\text{C}$. Surface sensible and latent heat fluxes are 138 W g m^{-2} and 108 W g m^{-2} , respectively, and vertical profiles of horizontal velocities are also prescribed (Klein et al., 2007). There is no ice phase at all altitudes, and no liquid phase exists above the inversion ($P_{inv}=850 \text{ hPa}$) at the initial time. Idealized vertical profiles of total water mixing ratio $q_t = q + q_w$ and liquid water potential temperature Θ_l are defined as (Klein et al., 2007):

$$q_t = \begin{cases} A_q, & P > P_{\text{inv}} \\ B_q + C_q(P - P_q), & P \leq P_{\text{inv}} \end{cases} \quad (3)$$

$$\Theta_l = \begin{cases} A_l, & P > P_{\text{inv}} \\ B_l - C_l(P - P_l), & P \leq P_{\text{inv}} \end{cases} \quad (4)$$

where A_q, B_q, C_q, P_q and A_l, B_l, C_l, P_l are set to be equal to 1.950 g kg^{-1} , 0.291 g kg^{-1} , $0.00204 \text{ g kg}^{-1} \text{ hPa}^{-1}$, 590 hPa and 269.20 K , 275.33 K , $0.07910 \text{ K hPa}^{-1}$, 815 hPa , respectively. Adiabatic LWC q_w , vapor content q , and potential temperature Θ derived from Eqs. (3)–(4) are shown in Fig. 1.

The initial bimodal distribution of dry APs are assumed to be composed of ammonium sulfate and independent of altitude. We do not simulate cloud origination and development, but use idealized vertical profile of LWC and droplet effective radii from flight measurements (Klein et al., 2007) to initialize the BRM. These characteristics as well as the derived vertical profile of droplet concentration and droplet size distributions at different altitudes at the initial time are shown in Fig. 2. In all our runs we use the BRM scheme with a 10 s time step. With this small time step, prescribed dynamics, and idealized forcing there is no significant spin up time, and we account for all data obtained during the course of our 12-h simulations.

We perform four sets of simulations for the “warm” and “ice” microphysics cases. We present the microphysical cloud properties obtained from the sensitivity experiments described in Table 1, and Table 2, for simulations with only “warm” and “ice” microphysics, respectively, as moments (concentration, content, and effective radius) of size distribution functions for liquid/solid hydrometeors. In simulations with “warm” microphysics, listed as W1, W2, W3, and W4, “ice” microphysics is inactive, and we switch on/off processes of water-water interactions (coagulation) and processes responsible for changes of initial CCN distribution as described in Table 1. Differences between W1 and W2 indicate the effects of coagulation and those between W1 and W4 indicate

Simulating mixed-phase Arctic stratus clouds

I. Sednev et al.

Title Page

Abstract

Introduction

Conclusions

References

Tables

Figures

◀

▶

◀

▶

Back

Close

Full Screen / Esc

Printer-friendly Version

Interactive Discussion



the effects of changes in the CCN distribution when coagulation is switched off. W3 includes both coagulation and an updated CCN distribution.

For simulations with “ice” microphysics switched on, listed as I1, I2, I3, and I4, we use different ice crystal origination rates due to the IIP under consideration (see the Appendix A3 for details) as described in Table 2. For I1 and I2, the first IIP is active, and the IN concentrations differ by a factor of 10 as shown in Table 2. Only the second IIP is active in I3, and both IIP are active in I4. Both I2 and I4 have the same IN concentrations. For similar IN concentrations, differences between I2 and I4 indicate the relative effect of the second IIP.

4 Results

As described in the previous section we perform a series of simulations to evaluate the impact of idealized forcing on modeled SS, the importance of the CCN spectrum shape for droplet activation and ice initiation processes. These runs are described in Table 1 and Table 2. We compare cloud microphysical properties from these simulations with observed values as obtained from MPACE IOP shown in Table 3 (McFarquhar et al., 2007). These simulations are discussed below.

4.1 Sensitivity runs with warm microphysics

Here we describe our results for simulations without ice microphysics. Table 4 shows the average values of liquid-phase microphysical properties during the course of model integration. Figure 3 shows the SSW for these experiments. At altitudes where SSW is negative, no activation of new cloud droplets is permitted, and cloud droplets instantly evaporate and sediment due to their own terminal velocities and applied large-scale subsidence at all levels. At altitudes where SSW is positive, activation of new cloud droplets can occur. The BRM droplet activation scheme is sensitive to modeled SS that determines critical CCN radius, which is the cut off radius for the CCN spectrum,

Simulating mixed-phase Arctic stratus clouds

I. Sednev et al.

Title Page

Abstract

Introduction

Conclusions

References

Tables

Figures

◀

▶

◀

▶

Back

Close

Full Screen / Esc

Printer-friendly Version

Interactive Discussion



and the number of droplets just nucleated.

In W1 coagulation is switched off, and droplet activation, condensation, evaporation, and sedimentation are the only active microphysical processes. Droplet activation at a particular level mainly occurs when SSW exceeds its value at the previous time steps because if an activation event takes place, the corresponding bins in the CCN spectrum are likely to be empty. In all our experiments we do not model processes of new AP formation as well as their growth due to condensation/coagulation. There is no AP supply due to the large-scale horizontal processes in W1 and the only physical mechanisms that supply AP at a particular altitude are large-scale subsidence and vertical turbulent diffusion. The implied large-scale tendencies of temperature and water vapor mixing ratio together with the prescribed subsidence velocity result in mainly negative tendencies of SSW in cloudy regions. The balance between tendencies, turbulence, and radiation are such that SSW rarely increases, and the critical SS and CCN critical radius remain practically unchanged. This means that the amount of water droplets just activated is negligibly small. Figure 4 shows the droplet concentration N_w , and Fig. 5 shows the LWC for all the “warm” microphysics simulations. Both droplet concentration and LWC diminish with time due to sedimentation and evaporation at all levels during the first six hours in W1. After this time, in sub-cloud layers SSW becomes positive due to the instantaneous vapor supply from the surface and droplet evaporation just below the initial cloud base. Starting with the lowest layer and propagating upward, SSW remains positive determining the existence of non-dissipated warm clouds near the surface. In these clouds droplet effective radii R_{ew} shown in Fig. 6 and droplet precipitation flux P_w (not shown) reach about $30 \mu\text{m}$ and 2.2mm d^{-1} , respectively, and maximum droplet concentration and LWC never exceed their initial values (Fig. 2).

As in W1, in simulation W2, in which coagulation is active, N_w and LWC have maximum value at the initial time (Fig. 2) and diminish with time as can be seen in Fig. 4 and Fig. 5. However, the process of rebuilding of SSW starts early, and SSW reaches very high values (about 3.5%, Fig. 3) because coagulation effectively reduces droplet concentration. The “warm” rain formation process determines the increase in R_{ew} (Fig. 6)

Simulating mixed-phase Arctic stratus clouds

I. Sednev et al.

Title Page

Abstract

Introduction

Conclusions

References

Tables

Figures

◀

▶

◀

▶

Back

Close

Full Screen / Esc

Printer-friendly Version

Interactive Discussion



and P_w (not shown), whose average values are about $28.5 \mu\text{m}$ and 0.6 mm d^{-1} , respectively (Table 4). The R_{ew} values are significantly greater than those in W1. To prevent unrealistically high values of supersaturation and very short glaciation time in experiments with ice microphysics, we update the CCN spectrum after each time step with its initial values assuming that air masses with similar aerosol properties travel through the domain considered.

Supersaturation (SS) and microphysical characteristics (N_w , LWC, and R_{ew}) for runs without “ice” microphysics using the CCN spectrum update assumption, W3 (with coagulation) and W4 (without coagulation) are shown in Fig. 3 and Figs. 4–6, respectively. In both W3 and W4 there are no areas of largely positive SSW as in W2 (Fig. 3). At the same time average N_w in W3 and W4 reaches 80 cm^{-3} and 66 cm^{-3} , respectively, as compared to 4 cm^{-3} and 2 cm^{-3} in W1 and W2, respectively. With coagulation turned on, as in W3, precipitation flux is reduced, and the LWC is higher compared to W4 in which coagulation is turned off.

Although the measurements of cloud droplets by a one-dimensional cloud probe (1DC, 20 – 640 μm maximum particle dimension) show drizzle development at the top of some of the MPACE single-layer clouds (McFarquhar et al., 2007), MPACE observations indicate that the spectrum of water droplets remains relatively narrow, and there is no remarkable precipitation during 10–12 October. Cloud microphysical values for W3 and W4, shown in Table 4, are in better agreement with observations (Table 3) compared to those obtained for W1 and W2. For example, W3 and W4 have R_{ew} average values that are within the R_{ew} observed range of 9 to 10.9 μm , shown in Table 3. However, compared to observations, W1 and W2 overestimate average R_{ew} values by a factor of 2 and 3, respectively. Average values of N_w and LWC for W1 and W2 are severely underestimated compared to observed ranges of 23 to 72 cm^{-3} and 154 to 193 mg m^{-3} for N_w and LWC, respectively. On the other hand, values of N_w for both W3 and W4 are within uncertainties in observations for N_w and LWC for W4 is closer to the observed range in LWC than are values simulated for W3. These results indicate that regardless of the warm rain formation process, the CCN spectrum update assumption

**Simulating
mixed-phase Arctic
stratus clouds**

I. Sednev et al.

Title Page

Abstract

Introduction

Conclusions

References

Tables

Figures

◀

▶

◀

▶

Back

Close

Full Screen / Esc

Printer-friendly Version

Interactive Discussion



is crucial to maintain a persistent liquid phase with values of LWC that are comparable with observations.

Based on differences between the four sets of simulations shown in Table 4 and observations shown in Table 3, we suggest that the CCN spectrum shape for droplet activation is more important than is the process of coagulation. These facts validate to some extent the assumptions used in experiments with “ice” microphysics that processes of water-water, ice-water, and ice-ice interactions may be relatively minor for the MPACE single-layer mixed-phase clouds.

4.2 Sensitivity runs with ice microphysics

To evaluate the impact of the rates of the different IIP’s on single-layer cloud evolution, we perform a set of runs I1, I2, I3, and I4 with ice microphysics Table 2. As shown in the previous section, simulations with the updated CCN spectrum, (W3 and W4) show more realistic cloud properties than do those without the updated CC spectrum (W1 and W2). In the runs with ice microphysics we restore the CCN spectrum to its initial values after each droplet activation event to prevent the cloud glaciating in unrealistically short time-scales. Tables 5–6 show the average values of cloud microphysical properties for droplets and individual ice crystals, and Figs. 7–8 show SSW and SSI evolution for runs with ice microphysics.

In these runs we consider two mechanisms of ice initiation. The fundamental difference between the two ice origination processes is the involvement of the liquid phase in the IIP. If the liquid phase is not involved in the IIP, we parameterize the origination of ice crystals from water vapor as a function of the SSI [Meyers et al. \(1992\)](#) as shown in Eq. (1). It is assumed that this function provides the maximum concentration, up to which ice crystals can be nucleated at a particular point. We assume that all newborn ice crystals, whose shape (plates, columns, or dendrites) depends on temperature, have the minimal size permitted by the mass grid (of about , the average values associated with a cloud droplet of 2 μm). This process operates for temperatures $T < -2^\circ\text{C}$. When the liquid phase is involved in the IIP, ice origination is considered to

Simulating mixed-phase Arctic stratus clouds

I. Sednev et al.

Title Page

Abstract

Introduction

Conclusions

References

Tables

Figures



Back

Close

Full Screen / Esc

Printer-friendly Version

Interactive Discussion



proceed via drop freezing (Pruppacher and Klett, 1978; Alheit et al., 1990; Khain and Sednev, 1995), and its rate is a function of the shape of the droplet distribution, droplet mass and temperature, as shown in Eq. (2). Newborn ice crystals of different sizes are assumed to be plate-like crystals. This process is active at negative temperatures in both saturated and undersaturated (w.r.t. water) conditions (see the Appendix A3 for details).

In all experiments with ice microphysics I1, I2, I3, and I4 the implied forcing assures the existence of high ($\sim 20\%$) SSI (Fig. 8), and crystals thus formed grow rapidly reaching sizes of hundreds microns due to deposition and the BFP in mainly undersaturated (w.r.t. water) environments (Fig. 7).

In I1, only the first IIP is active. Figure 9 shows cloud droplet concentration N_w , and Fig. 10 shows LWC for the liquid phase for all simulations I1, I2, I3, and I4. Figures 11–13 show the microphysical properties for the ice phase (concentration N_i , IWC, and effective radius R_{ei}) for the same simulations. For I1, N_w (Fig. 9) and LWC (Fig. 10) have maximum values of 73 cm^{-3} and 468 mg m^{-3} at the initial time (Fig. 2) and are continuously diminished due to evaporation and the BFP. Cloud glaciation time is \sim three hours in I1. Simulated fields of SS show that initially intensively glaciated clouds continue their development as icy clouds in sub-saturated (w.r.t. water) conditions (Fig. 7). Ice-phase concentration and content have maximum values in this experiment as compared to other experiments with ice microphysics as shown in Figs. 11 and 12. For example, the maximum value of the concentration/content is $9.2 \text{ L}^{-1} / 11 \text{ mg m}^{-3}$ and $7.4 \text{ L}^{-1} / 152 \text{ mg m}^{-3}$ for plate and dendrite crystals, respectively. We note that the total ice-phase concentration, content and effective radii in I1 are significantly higher than those observed during MPACE.

As in I1 only the first IIP is active in I2, but the maximum concentration of ice crystals which can be nucleated at a particular point for the same SSI is reduced by an order of magnitude due to the assumption made for N_{ms} , which is an order of magnitude smaller than that used for I1. As a result, the liquid phase in I2 exists for the course of model integration (12 h) supplying water vapor due to droplet evaporation for ice crystal

Simulating mixed-phase Arctic stratus clouds

I. Sednev et al.

Title Page

Abstract

Introduction

Conclusions

References

Tables

Figures

◀

▶

◀

▶

Back

Close

Full Screen / Esc

Printer-friendly Version

Interactive Discussion



depositional growth. Activation of new droplets also takes place because the maximum value of N_w is greater than its value at the initial time. N_w (Fig. 9) and LWC (Fig. 10) have average values of 29 cm^{-3} and 123 mg m^{-3} , respectively (Table 5). LWC is reduced by an order of magnitude in \sim nine hours (Fig. 10). The maximum ice concentration is 7 times less in I2 than in I1, and R_{ei} in I2 is larger compared to that in I1 (Fig. 11).

I3, in which only the second IIP is active, is characterized by persistent liquid phase with maximum values of droplet concentration (Fig. 9) and LWC (Fig. 10) near cloud top, significantly higher crystal concentration, and minimum values of ice precipitation flux (not shown) as compared with I2. Crystals effective radii R_{ei} in I3 also have minimum values (Table 5).

Both IIP are active in I4, that combines some microphysical features of I2 and I3. Its main features are reduced droplet concentration and LWC as compared to I3 (Table 5), increased ice concentration and reduced effective radii as compared to I2, with about the same precipitation fluxes (not shown) for both runs (Table 6). I4 also agrees qualitatively with M-PACE data (McFarquhar et al., 2007) that show the typical vertical structure of single layer clouds: existence of mainly liquid and ice phases at cloud top and near cloud base, respectively, with mixed phase in the middle of cloudy region. We expect that the relative importance of the second IIP will increase for long-lasting Arctic stratocumulus clouds within the temperature range -5°C and -20°C in less supersaturated (w.r.t. ice) environments than used in our runs.

4.3 Comparison with observations

To facilitate a comparison between observations shown in Table 3 and simulations, we show the same averaged characteristics for experiments with ice microphysics – I1, I2, I3, and I4 – in Table 7. Comparison of these tables indicate that observed and simulated microphysical characteristics (concentration of liquid and solid particles, LWC, and IWC) are quite similar. The R_{ew} calculated using observed and simulated data are also comparable.

At the same time ice crystal effective radii R_{ei} calculated from observations and sim-

Simulating mixed-phase Arctic stratus clouds

I. Sednev et al.

Title Page

Abstract

Introduction

Conclusions

References

Tables

Figures

◀

▶

◀

▶

Back

Close

Full Screen / Esc

Printer-friendly Version

Interactive Discussion



ulations differ significantly. The R_{ei} calculated from observations are about 25 microns for October 9–10 flights, whereas the R_{ei} calculated from simulations are systematically greater. For example, values of R_{ei} for I2 and I3 are 8 and 5 times greater than that from observations. Possible reasons for these differences are from numerical diffusion and different techniques used for R_{ei} calculations. Numerical diffusion is an unavoidable feature of any numerical scheme used to solve equations for distribution functions for condensation/evaporation, deposition/sublimation, and BFP. Because favorable conditions for the BFP exist in modeled clouds during glaciation, depositional growth of ice crystals at the expense of evaporated cloud droplets is a reason that might determine the artificial spectra broadening in numerical simulations (see the Appendix A4 for details). A second reason for possible differences between observed and simulated R_{ei} is different techniques used to calculate its values.

To calculate R_{ei} from the observations (McFarquhar et al., 2007) the following definition based on the ice water content (IWC) and cross-sectional area of the particle distributions (A_c) is used (Fu, 1996):

$$R_{ei} = \frac{\sqrt{3}IWC}{3\rho_i A_c} \quad (5)$$

where $\rho_i=0.9 \text{ g cm}^{-3}$ is the bulk density (mass divided by volume) of the ice crystals. The R_{ei} calculated from the observations are highly dependent on the mass-diameter (m-D) relation that is assumed to characterize the observed size distributions (for details see McFarquhar and Heymsfield, 1998).

The R_{ei} calculated from the simulations correspond to a “composite” crystal distribution because more than one type of crystals with different shapes and densities are used (see the Appendix A5 for details). These R_{ei} are provided in Table 3, (R_{ei} for individual ice crystals are listed in Table 6). The “composite” ice phase effective radius

**Simulating
mixed-phase Arctic
stratus clouds**

I. Sednev et al.

Title Page

Abstract

Introduction

Conclusions

References

Tables

Figures

◀

▶

◀

▶

Back

Close

Full Screen / Esc

Printer-friendly Version

Interactive Discussion



shown in Table 7 is calculated as

$$R_{ei} = \sum_{k=2}^4 \int_0^{\infty} r_k^3(m) f_k(m) dm / \sum_{k=2}^4 \int_0^{\infty} r_k^2(m) f_k(m) dm \quad (6)$$

where $r_k(m)$ are bulk radius for columns ($k=2$), plates ($k=3$) and dendrites ($k=4$), respectively. Definition (6) is useful for analysis of radar data providing information about ice particles sizes. As Table 7 and Table 3, show, R_{ei} calculated using (6) reflect the contribution of large crystals to size distribution and are significantly greater than those calculated using (5) chosen in such a way that if a lot of large ice crystals exist the R_{ei} are actually small.

To compare R_{ei} calculated from the observations and simulations using definition Eq. (5) a “composite” m-D relation is needed. It is not easy to determine what m-D relation might apply to the “composite” crystal distribution from the simulations. It becomes evident that techniques used to calculate different microphysical characteristics from observations and essential BRM scheme characteristics (mass grids, m-D relations, hydrometeor densities, capacitances, and terminal velocities among others) should be interrelated. Otherwise, direct comparison of data derived from observations and simulations is not logically based.

To determine if the differences between observed and simulated R_{ei} arise due to different definitions, we use the formula that mimics Eq. (5) for individual ice crystals:

$$R_{ek} = \frac{\sqrt{3}}{3} \int_0^{\infty} m f_k(m) dm / \int_0^{\infty} \rho_{ik}(m) A_{ck}(m) f_k(m) dm \quad (7)$$

where R_{ek} , ρ_{ik} , and A_{ck} are ice crystal effective radius, density, and projected area, respectively, for columns ($k=2$), plates ($k=3$), and dendrites ($k=4$). Corresponding

Simulating mixed-phase Arctic stratus clouds

I. Sednev et al.

Title Page

Abstract

Introduction

Conclusions

References

Tables

Figures

◀

▶

◀

▶

Back

Close

Full Screen / Esc

Printer-friendly Version

Interactive Discussion



“composite” ice phase effective radius R_{ei} then calculated as

$$R_{ei} = \frac{\sqrt{3}}{3} \sum_{k=2}^4 \int_0^{\infty} m f_k(m) dm / \sum_{k=2}^4 \int_0^{\infty} \rho_{ik}(m) A_{ck}(m) f_k(m) dm \quad (8)$$

Table 8 shows composite ice effective radii calculated from the simulations using Eq. (6), Eq. (8), and definition based on “melted” radius (see the Appendix A5 for details), respectively, and effective radius for individual ice crystals (plates R_{ep} and dendrites R_{ed}) calculated from the simulations using Eq. (7). As can be seen from Table 8, R_{ei} calculated using Eq. (8) from simulations are within observed ranges (Table 3) indicating comparability of observed and simulated ice crystal distributions. But these radii show relatively small variability from experiment to experiment as compared to R_{ei} calculated using definition based on melted radius (radius of sphere that has the same mass as ice particle and whose density is equal to water density). Definition based on melted radius requires only distributions of ice particles on mass grids, and additional knowledge of ice crystals m-D relations, projected areas, bulk radii and bulk densities is not necessary. Thus, ice crystal effective radius definition base on melted radius should be recommended for evaluation of relative importance of different microphysical processes such as different ice initiation mechanisms in intercomparison studies.

The differences between effective radius calculated using different definitions for individual ice crystal (Table 6 and Table 8) as well as “composite” ice phase effective radius R_{ei} (Table 7 and Table 8) highlight the necessity to standardize calculation of ice effective radii since these are ultimately provided as input for radiation calculations.

5 Summary

To improve the representation of mixed-phase cloud processes in the GISS GCM and facilitate the improvement of bulk microphysics parameterizations that do not use

Simulating mixed-phase Arctic stratus clouds

I. Sednev et al.

Title Page

Abstract

Introduction

Conclusions

References

Tables

Figures

◀

▶

◀

▶

Back

Close

Full Screen / Esc

Printer-friendly Version

Interactive Discussion



known a priori shape of hydrometeors' distribution functions, we couple a mixed-phase BRM scheme to the GISS SCM. We perform sensitivity simulations with and without ice microphysics to evaluate the impact of the CCN spectrum shape, process of warm rain formation, different ice initiation mechanisms, and the Bergeron-Fendelsen process on glaciation time and longevity of mixed-phase clouds observed during the ARM MPACE IOP.

Based on differences between our sensitivity simulations that do not include ice microphysics, we find that the process of water-water interaction may be relatively minor compared to that of the CCN spectrum shape for droplet activation for the MPACE single-layer mixed-phase clouds.

For the ice phase initiation we consider two main mechanisms. The first mechanism is active in cold supersaturated (w.r.t. ice) environments and determines the number of small ice crystals originating from water vapor, whose shapes depend on temperature. The second mechanism of ice initiation is active at negative temperatures in both saturated and under-saturated (w.r.t. water) environments due to the transformation of super-cooled droplets, whose spectrum and masses as well as degree of supercooling determine the rate of origination of bigger (up to 100 μm) plate-like crystals. Because the freezing rate depends on the droplet mass, the bigger droplets are likely to freeze faster. These two ice initiation mechanisms act quite differently. The first IIP is responsible for the supply of small ice crystals with different shapes. These crystals with different shapes grow fast at different rates in a highly supersaturated (w.r.t. ice) environment at the expense of evaporated cloud droplets. The second IIP is responsible for the supply of bigger (assuming the droplet spectrum is broad enough) ice crystals that continue to grow mainly due to riming, reducing droplet concentration and water vapor supply for the ice phase due to droplet evaporation. The second mechanism indicates the importance of the AP spectrum for the ice initiation process. It crucially depends on the shape of the AP distribution and not only on the concentration of cloud droplets but also on the broadness of the spectrum of cloud droplets just activated. We speculate that in maritime stratiform clouds with broader droplet spectra the second IIP might

Simulating mixed-phase Arctic stratus clouds

I. Sednev et al.

Title Page

Abstract

Introduction

Conclusions

References

Tables

Figures

◀

▶

◀

▶

Back

Close

Full Screen / Esc

Printer-friendly Version

Interactive Discussion



be of greater importance. In our simulations with prescribed large-scale forcing that assures the existence of high supersaturation (w.r.t. ice) (up to 20 %) and coalescence processes switched off, the net supply of new ice particles due to the two ice initiation mechanisms has the same order of magnitude.

5 The differences between ice effective radii calculated using ice crystal cumulative cross-sectional area and melted radius definitions indicate importance of the first definition for radiation calculations and the second definition for analysis of precipitation formation process in mixed-phase clouds. Because of relatively small variability of ice effective radius calculated using cross-sectional area definition, ice effective radius
10 definition based on melted radius should be used as additional microphysical characteristic for evaluation of relative importance of different microphysical processes such as different ice initiation modes in intercomparison studies.

Recently, a 2-D CRM was used to obtain differences in cloud properties in simulations with one and two-moment bulk microphysics (BLK) for MPACE conditions (Luo et al., 2008). MPACE mixed-phase clouds were also simulated with a 3-D Arctic version of MM5 with a two-moment bulk microphysics scheme to evaluate sensitivity of clouds properties to cloud condensation and ice nuclei concentration (Morrison et al., 2007). Although BLK schemes are usually able to represent adequately the variations of droplet concentration for maritime and continental clouds, their ability to represent
20 the process of droplet activation for maritime and continental clouds with respect to broadness of spectrum of cloud droplets just activated is limited. Accounting only for the variations of the droplet concentration under different aerosol conditions is necessary, but not sufficient, for the appropriate representation of ice initiation processes in mixed-phase clouds. This fact has to be taken into account if bulk microphysics schemes are used to investigate relative importance of different ice initiation modes in
25 mixed-phase clouds.

In our sensitivity runs, originated ice crystals continue to grow in simulated clouds mainly due to the BFP that is identified as a process responsible for the rate of glaciation of single layer mixed-phase MPACE clouds. An adequate treatment of this pro-

**Simulating
mixed-phase Arctic
stratus clouds**

I. Sednev et al.

Title Page

Abstract

Introduction

Conclusions

References

Tables

Figures



Back

Close

Full Screen / Esc

Printer-friendly Version

Interactive Discussion



cess is important for models that use BRM or BLK schemes to investigate these types of Arctic clouds. Despite the high computational cost, our calculations of hydrometeors' growth rates due to the BFP are based on analytical solution to equations for supersaturation (w.r.t. water and ice), and the changes of supersaturation during the microphysical time step in liquid/solid particle growth equation are also taken into account. It is difficult to expect that the utilization of different modifications of "saturation adjustment" that is widely used in BLK schemes (Lord et al., 1984; Tao et al., 1989; Ferrier, 1994) can represent the simultaneous growth rate of cloud particles due to the BFP. Since the droplet activation process (w.r.t. broadness of spectrum of newborn cloud droplets) and the BFP (w.r.t. calculation of simultaneous evaporation rates for droplets and deposition rates for ice particles) are difficult to be reliably represented in bulk schemes, the interpretation of the results with these schemes in the case of mixed-phase clouds as observed during MPACE has to be done very carefully.

One of the possible ways to improve the creditability of mixed-phase bulk microphysics schemes is the creation of a unified modeling framework that includes a computationally expensive BRM-type scheme and a computationally efficient but less sophisticated microphysics scheme. Development of such a scheme should be based on observations and numerical simulations obtained using the BRM scheme that is considered as a benchmark. This work is underway. Our future study will focus on the investigation of the impact of different environmental conditions and processes of water-ice and ice-ice interaction on the longevity and glaciation time of mixed-phase MPACE clouds using the BRM scheme and a two-moment BLK scheme (Morrison et al., 2005) coupled to the GISS-LBL SCM.

**Simulating
mixed-phase Arctic
stratus clouds**

I. Sednev et al.

Title Page

Abstract

Introduction

Conclusions

References

Tables

Figures

◀

▶

◀

▶

Back

Close

Full Screen / Esc

Printer-friendly Version

Interactive Discussion



Bin resolved microphysical scheme

Different solid hydrometeors in clouds have different densities and habits. The bulk density of ice particles can be defined as the particle mass divided by the volume of the solid cylinder having a radius and a semi-length equal to the maximum a-axes and c-axes extensions of the particle. The bulk density of rimed ice changes in a wide range from 0.09 g cm^{-3} up to 0.9 g cm^{-3} (Macklin, 1962). Ice particles have many different habits (Magono and Lee, 1966) that depend mainly on temperature and supersaturation (Hobbs and Scott, 1965). To characterize ice particle habit and indicate its deviation from the spherical symmetry a so called “shape parameter” is usually used. The numerical value of the shape parameter is equal to the maximum dimension of ice particle divided by the minimum dimension. For example, based on the value of the shape parameter ice crystals are characterized as having column-like or plate-like shape amongst others. For different microphysical processes growth rates of basal and prism faces of ice crystals, which determine the primary crystal shape, are different (Lamb and Hobbs, 1971; Lamb and Scott, 1974). Different shapes of ice crystals influence growth rates of such microphysical processes as deposition/sublimation and ice-water/ice-ice interactions. To describe accurately the crystal shape modification as the crystal enters different growth regimes, ice particles distribution functions depending on mass, density, and shape are needed (Koenig, 1971; Cotton, 1972b; Miller and Young, 1979; Chen and Lamb, 1994b). In multi-dimensional dynamics models with a large number of grid cells, representation of crystals shapes and densities needs to be fairly simple due to the significant computational cost. At the same time, a microphysical scheme has to be able to capture essential physics of ice phase such as 1) dependence of the shape of primary nucleated ice crystals on temperature; 2) dependence of deposition/sublimation process on ice particle shape and density; 3) dependence of efficiencies of ice-water and ice-ice interaction on terminal velocities and

Simulating mixed-phase Arctic stratus clouds

I. Sednev et al.

Title Page

Abstract

Introduction

Conclusions

References

Tables

Figures

◀

▶

◀

▶

Back

Close

Full Screen / Esc

Printer-friendly Version

Interactive Discussion



Simulating mixed-phase Arctic stratus clouds

I. Sednev et al.

Title Page

Abstract

Introduction

Conclusions

References

Tables

Figures

◀

▶

◀

▶

Back

Close

Full Screen / Esc

Printer-friendly Version

Interactive Discussion



swept volumes amongst others. Thus, a balance must be achieved between the inclusion of detailed microphysics and the associated computational cost increase. [Khain and Sednev \(1995\)](#) use several types of ice hydrometeors with different density: from 0.09 g cm^{-3} for large snowflakes up to 0.9 g cm^{-3} for plate-type crystals and frozen drops/hail for the description of rimed ice in clouds. Graupel are assumed to have a bulk density of 0.4 g cm^{-3} that corresponds to the mean value, around which the experimental data are concentrated ([Macklin, 1962](#)). Three distribution functions are utilized to represent three basic shapes of individual ice crystals that originate at different temperatures and grow at different rates. This approach is a compromise between the complexity and applicability of the BRM originally developed by [Khain and Sednev \(1996\)](#) (KS96) in multi-dimensional cloud resolving models for simulation of processes of precipitation formation and distribution in realistic mesoscale environments ([Lynn et al., 2005](#)).

A1 Characteristics of hydrometeors in the BRM

The following types of particles are considered.

- 1) Water drops (cloud droplets and rain drops). They are characterized by their mass. The bulk density of water drops $\rho_w = 1.0 \text{ g cm}^{-3}$.
- 2) Individual ice crystals. Three types of the crystals are considered: columns, plates, and dendrites. They are characterized by their mass, the diameter/height or the diameter/length ratio, and bulk density. These characteristics are taken mainly from [Pruppacher and Klett \(1978\)](#) (PK78).

Columnar crystals. Crystals of the Cle type (the classification is after [Magono and Lee, 1966](#)) are used to describe columnar crystals. Their length L and diameter d are related according to

$$d = \begin{cases} 0.260 \times L^{0.927}, & \text{if } L/d > 2 \\ 0.578 \times L^{0.958}, & \text{if } L/d \leq 2 \end{cases}$$

Simulating mixed-phase Arctic stratus clouds

I. Sednev et al.

Title Page

Abstract

Introduction

Conclusions

References

Tables

Figures

◀

▶

◀

▶

Back

Close

Full Screen / Esc

Printer-friendly Version

Interactive Discussion



The bulk density of columnar crystals ρ_{col} is determined as:

$$\rho_{\text{col}} = \begin{cases} 0.848 \times L^{-0.014}, & \text{if } L > 140 \mu\text{m} \\ 0.848, & \text{if } L \leq 140 \mu\text{m} \end{cases}$$

Plate-like crystals. From among the numerous types of plate-type crystals only hexagonal plates of the Clg type (solid thick plate) are considered. Their thickness h is related to diameter d by the following formula (for the ice crystal diameter from $10 \mu\text{m}$ up to $1000 \mu\text{m}$):

$$h = 0.138 \times d^{0.778}$$

The bulk density of plate-type crystals is assumed to be constant:

$$\rho_{\text{plt}} = 0.9 \text{ g cm}^{-3}$$

Dendrites. The crystal shape of the Plc-s type (for the ice crystal diameter from $100 \mu\text{m}$ up to $500 \mu\text{m}$) and the crystal shape of the Pld type (for the ice crystal diameter from $500 \mu\text{m}$ up to $3000 \mu\text{m}$) are chosen to characterize dendrites. The thickness/diameter relation for these crystals is

$$h = 9.96 \times 10^{-3} d^{0.415}$$

The bulk density of the dendrites is determined as

$$\rho_{\text{dnd}} = 0.588 \times d^{-0.377}$$

A2 Equations for size distribution functions

Model microphysics is based on solving kinetic equations for mass (size) distribution functions describing seven types of hydrometeors: f_1 is the mass distribution function

for water droplets and rain drops; f_2 , f_3 , and f_4 are the size (mass) distribution functions for columnar crystals, plate crystals, and dendrites, respectively; f_5 , f_6 , and f_7 are the mass distribution functions for snowflakes, graupel particles, and frozen drops/hail. In addition, size distribution function f_{CCN} for aerosol particles (AP) that are considered to serve as cloud condensation nuclei (CCN) is used to parameterize the process of initial droplet formation.

The microphysics scheme takes into account the following microphysical processes:

- activation of CCN, which can be different chemical composition
- nucleation of droplets
- condensational growth/evaporation of droplets
- collision-coalescence of drops
- spontaneous breakup of drops
- drops freezing
- nucleation of individual ice crystals
- ice multiplication
- deposition/sublimation of ice particles
- drop-ice and ice-ice interactions
- melting of ice particles
- spontaneous breakup of snowflakes
- sedimentation of drops and ice particles

**Simulating
mixed-phase Arctic
stratus clouds**

I. Sednev et al.

Title Page

Abstract

Introduction

Conclusions

References

Tables

Figures

◀

▶

◀

▶

Back

Close

Full Screen / Esc

Printer-friendly Version

Interactive Discussion



The distribution functions are defined on mass grids that can contain different number of bins. The changes in distribution functions for liquid and solid phases are governed by the following equations:

$$\frac{\partial f_k(m_k)}{\partial t} + \frac{1}{\rho_a} \frac{\partial \rho_a (w - V_k(m_k)) f_k(m_k)}{\partial z} + \frac{1}{\rho_a} \Delta(\rho_a f_k(m_k)) = \left[\frac{\partial f_k}{\partial t} \right]_{\text{act/nucl}} + \left[\frac{\partial f_k}{\partial t} \right]_{\text{cond/evp}} + \left[\frac{\partial f_k}{\partial t} \right]_{\text{coal}} + \left[\frac{\partial f_k}{\partial t} \right]_{\text{frz/mlt}} + \left[\frac{\partial f_k}{\partial t} \right]_{\text{brk}} + \left[\frac{\partial f_k}{\partial t} \right]_{\text{mult}} \quad (\text{A1})$$

where $k=1 \dots 7$ denotes the type of hydrometeor, V_k is its terminal velocity, w is vertical velocity, and ρ_a is air density. $[\partial f_k / \partial t]_{\text{act/nucl}}$ are the rates of changes of f_k due to activation/nucleation processes; $[\partial f_k / \partial t]_{\text{cond/ev}}$ are the rate of changes of f due to the condensational growth or evaporation of droplets (for $k=1$) or due to deposition/sublimation of ice particles (for $k>1$). $[\partial f_k / \partial t]_{\text{coal}}$ are the rates of change of f_k due to coalescence between hydrometeors of any type including type k ; $[\partial f_k / \partial t]_{\text{frz/mlt}}$ and $[\partial f_k / \partial t]_{\text{brk}}$ are the rates of change of f_k due to the freezing of droplets and melting of ice particles and breakup processes; $[\partial f_k / \partial t]_{\text{mult}}$ describes ice multiplication process, and operator $\Delta()$ denotes the contribution of small scale turbulence.

The equation for distribution functions for AP f_{ccn} that is defined on separate mass grid m_c is as following:

$$\frac{\partial f_{\text{ccn}}(m_c)}{\partial t} + \frac{1}{\rho_a} \frac{\partial \rho_a (w - V_{\text{ccn}}(m_c)) f_{\text{ccn}}(m_c)}{\partial z} + \frac{1}{\rho_a} \Delta(\rho_a f_{\text{ccn}}(m_c)) = \left[\frac{\partial f_{\text{ccn}}}{\partial t} \right]_{\text{act}} \quad (\text{A2})$$

Sedimentation velocities of AP $V_{\text{ccn}}(m_c)$ are set to be zero, and wet removal of AP is not considered in this study.

The BRM scheme provides calculation of precipitation amount, concentration, mass contents and precipitation fluxes of different hydrometeors, radar reflectivity from water and ice, the mean and effective radii of droplets and ice particles as well as provides information for calculation of cloud optical properties such as single scatter albedo,

Simulating mixed-phase Arctic stratus clouds

I. Sednev et al.

Title Page

Abstract

Introduction

Conclusions

References

Tables

Figures

◀

▶

◀

▶

Back

Close

Full Screen / Esc

Printer-friendly Version

Interactive Discussion



optical depth and asymmetry parameter. For example, concentrations n_k , water/ice contents q_k , and precipitation fluxes P_k of hydrometeors are determined by means of distribution functions as follows:

$$n_k = \int_0^{\infty} f_k(m_k) dm_k \quad (\text{A3})$$

$$q_k = \int_0^{\infty} m_k f_k(m_k) dm_k \quad (\text{A4})$$

$$P_k = \rho_a \int_0^{\infty} (W - V_k(m_k)) m_k f_k(m_k) dm_k \quad (\text{A5})$$

In the above, f_k are given in number of particles per kg of water in kg of air, and n_k , q_k , and P_k are in number of particles in kg of air, kg of condensate in kg of air, and kg of condensate per m^2 per second, respectively.

10 A3 Ice initiation mechanisms

Numerous studies have been dedicated to the problem of ice initiation e.g., [Gokhale and Goold \(1968\)](#), [Vali \(1971, 1985\)](#), [Gokhale and Spengler \(1972\)](#), [Cooper \(1974\)](#), [Young \(1974a\)](#), [Mossop \(1985\)](#), [Hobbs and Rangno \(1985\)](#), [Deshler and Vali \(1992\)](#) amongst others. In spite of significant efforts, the problem of rapid formation of very high concentrations of ice particles in many clouds remains unsolved ([Hobbs, 1969, 1990](#); [Beard, 1992](#)).

Two main mechanisms of ice generation by supercooled droplet freezing are usually considered: immersion freezing and contact freezing. Immersion freezing is connected with the activation of a particle resident within a drop; contact freezing nucleation refers to a freezing event resulting from a brief (a few seconds) encounter between a supercooled drop and a nucleating substance ([Young, 1974a](#)). In most of the studies mentioned different factors influencing the rate of drop freezing (temperature, concentration

Simulating mixed-phase Arctic stratus clouds

I. Sednev et al.

Title Page

Abstract

Introduction

Conclusions

References

Tables

Figures

◀

▶

◀

▶

Back

Close

Full Screen / Esc

Printer-friendly Version

Interactive Discussion



of nuclei and drops, chemical properties of nuclei, etc.) were investigated. Observational results (Hobbs, 1990; Rango and Hobbs, 1991; Murakami et al., 1992) suggest that formation of ice in clouds is determined not only by primary ice crystal nucleation but also by the transformation of supercooled liquid water.

5 Because the probability of drop freezing strongly decreases with the decrease in drop mass, a spectrum of small crystals (of about 50 μm) is formed due to the nucleation from vapor and depositional growth. Water drop freezing that contribute to ice crystal initiation is considered separately, and is treated as a main mechanism of primary graupel formation. The freezing probability is given by:

$$\frac{1}{f_1(m)} \frac{\partial f_1(m)}{\partial t} = \begin{cases} -A_f m \{ \exp[B_f T_{\text{sup}}] - 1 \}, & \text{if } T_{\text{sup}} > 0 \\ 0, & \text{if } T_{\text{sup}} \leq 0 \end{cases} \quad (\text{A6})$$

10 A similar dependence was used in Takahashi (1976), Alheit et al. (1990), and Khain and Sednev (1996). In Eq. (A6) m is the drop mass, $T_{\text{sup}} = T_f - T$ is the degree of supercooling, $T_f = 273.16 \text{ K}$ is temperature threshold value, $B_f = 0.66 \text{ K}^{-1}$, and values for arbitrary constant A_f are in Table 2. It is arbitrarily assumed that frozen droplets with radii less than 100 μm are transformed into plate crystals with the density of 0.9 g cm^{-3} , and drops with greater radii become graupel particles.

15 If liquid phase is not involved in ice initiation process, we parameterize nucleation of ice crystals from water vapor as a function of supersaturation w.r.t ice S_i (Meyers et al., 1992):

$$N_{mc} = N_{ms} \exp[A_{ms} + B_{ms} S_i] \quad (\text{A7})$$

where A_{ms} and B_{ms} are set to -0.639 and 12.96 , respectively, and values for ice nuclei (IN) concentration N_{ms} are in Table 2. It is assumed that N_{mc} determines the maximum concentration of ice crystals that can be nucleated from water vapor at a particular point. Nucleation is not permitted if concentration of ice hydrometeors is already greater than that determined by Eq. (1). Only the number of crystals needed to

Simulating mixed-phase Arctic stratus clouds

I. Sednev et al.

Title Page

Abstract

Introduction

Conclusions

References

Tables

Figures

◀

▶

◀

▶

Back

Close

Full Screen / Esc

Printer-friendly Version

Interactive Discussion



reach the concentration given by Eq. (1) is nucleated. All newborn ice crystals have the minimum size permitted by mass grid, and basic crystal habits, which depend on temperature (Takahashi et al., 1991), are plates ($-4^{\circ}\text{C} < T$), columns ($-8^{\circ}\text{C} \leq T \leq -4^{\circ}\text{C}$), plates ($-14^{\circ}\text{C} \leq T < -8^{\circ}\text{C}$), dendrites ($-18^{\circ}\text{C} \leq T < -14^{\circ}\text{C}$), plates ($-22.4^{\circ}\text{C} \leq T < -18^{\circ}\text{C}$), and columns ($T < -22.4^{\circ}\text{C}$).

A4 Diffusional growth of hydrometeors

The rate of changes of distribution function f_1 for liquid phase due to condensation ($dm_1/dt > 0$) or evaporation ($dm_1/dt < 0$) is written as

$$\left[\frac{\partial f_1(m_1)}{\partial t} \right]_{\text{cnd/evp}} = - \frac{\partial}{\partial m_1} f_1(m_1) \frac{dm_1}{dt} \quad (\text{A8})$$

Equation (A8) provides two useful computational constrains for condensation or evaporation processes

1) Integrating Eq. (A8) with respect to mass m_1 from 0 to ∞

$$\left[\frac{\partial}{\partial t} \int_0^{\infty} f_1(m_1) dm_1 \right]_{\text{cnd/evp}} = f_1(m_1) \frac{dm_1}{dt} \Big|_{m_1=0} - f_1(m_1) \frac{dm_1}{dt} \Big|_{m_1=\infty},$$

using definition Eq. (A3) for $k=1$, and applying appropriate boundary conditions, we obtain

$$\left[\frac{\partial n_w}{\partial t} \right]_{\text{cnd/evp}} = \begin{cases} 0, & \text{for condensation} \\ -\partial n_{we}/\partial t, & \text{for evaporation} \end{cases} \quad (\text{A9})$$

where n_{we} is total number of evaporated droplets.

Simulating mixed-phase Arctic stratus clouds

I. Sednev et al.

Title Page

Abstract

Introduction

Conclusions

References

Tables

Figures

◀

▶

◀

▶

Back

Close

Full Screen / Esc

Printer-friendly Version

Interactive Discussion



[Title Page](#)
[Abstract](#)
[Introduction](#)
[Conclusions](#)
[References](#)
[Tables](#)
[Figures](#)
[◀](#)
[▶](#)
[◀](#)
[▶](#)
[Back](#)
[Close](#)
[Full Screen / Esc](#)
[Printer-friendly Version](#)
[Interactive Discussion](#)


The first Eq. (A9)

$$\left[\frac{\partial n_w}{\partial t}\right]_{\text{cnd}} = 0 \quad (\text{A10})$$

has the simple physical meaning that in the condensation process concentration of droplets is constant. The second one expresses the fact that in the evaporation process the total number of existing and evaporated cloud droplets remains unchanged

$$\left[\frac{\partial}{\partial t}(n_w + n_{we})\right]_{\text{evp}} = 0 \quad (\text{A11})$$

- 2) Multiplying Eq. (A8) by mass m_1 and integrating resulting equation with respect to m_1 and using definition Eq. (A4) for $k=1$, we get

$$\left[\frac{\partial q_w}{\partial t}\right]_{\text{cnd/evp}} = \int_0^\infty f_1(m_1) \frac{dm_1}{dt} dm_1 \quad (\text{A12})$$

The last equation determines the increase in liquid water content (LWC) q_w due to condensed water vapor supply or decrease in LWC due to evaporation.

- 5 The rate of change of the water vapor mixing ratio q due to condensation/evaporation in ice free environment can be written as

$$\left[\frac{\partial q}{\partial t}\right]_{\text{cnd/evp}} = -\varepsilon_w \quad (\text{A13})$$

Adding Eq. (A12) and Eq. (A13), it follows that

$$\left[\frac{\partial}{\partial t} (q + q_w) \right]_{\text{cnd/evp}} = \int_0^{\infty} f_1(m_1) \frac{dm_1}{dt} dm_1 - \varepsilon_w \quad (\text{A14})$$

Since the mass conservation law

$$\left[\frac{\partial}{\partial t} (q + q_w) \right]_{\text{cnd/evp}} = 0 \quad (\text{A15})$$

has to be satisfied, we obtain

$$\varepsilon_w = \int_0^{\infty} f_1(m_1) \frac{dm_1}{dt} dm_1 \quad (\text{A16})$$

The rate of change of the temperature T can be written as

$$\left[\frac{\partial T}{\partial t} \right]_{\text{cnd/evp}} = \frac{L_w}{c_p} \varepsilon_w \quad (\text{A17})$$

where L_w is the specific latent heat of evaporation and c_p is specific heat of air at constant pressure.

Combining Eq. (A13) and Eq. (A17), we get energy conservation law

$$\left[\frac{\partial}{\partial t} (c_p T + L_w q) \right]_{\text{cnd/evp}} = 0 \quad (\text{A18})$$

The rates of changes of distribution functions f_k for solid hydrometeors ($k=2\dots7$) due to deposition ($dm_k/dt > 0$) or sublimation ($dm_k/dt < 0$) are given as

$$\left[\frac{\partial f_k(m_k)}{\partial t} \right]_{\text{dep/sub}} = - \frac{\partial}{\partial m_k} f_k(m_k) \frac{dm_k}{dt} \quad (\text{A19})$$

Title Page

Abstract

Introduction

Conclusions

References

Tables

Figures

◀

▶

◀

▶

Back

Close

Full Screen / Esc

Printer-friendly Version

Interactive Discussion



where k is the type of hydrometeor ($k=2 \dots 4$, ice crystals; 5, aggregates; 6, graupel; and 7, frozen drops/hail).

Equations (A10), (A12), (A13), (A15)– (A18) for ice phase can be written as

$$\left[\frac{\partial n_i}{\partial t}\right]_{\text{dep}} = 0 \quad (\text{A20})$$

$$\left[\frac{\partial q_i}{\partial t}\right]_{\text{dep/sub}} = \sum_{k=2}^7 \int_0^{\infty} f_k(m_k) \frac{dm_k}{dt} dm_k \quad (\text{A21})$$

$$\left[\frac{\partial q}{\partial t}\right]_{\text{dep/sub}} = -\varepsilon_i \quad (\text{A22})$$

$$\left[\frac{\partial}{\partial t}(q + q_i)\right]_{\text{dep/sub}} = 0 \quad (\text{A23})$$

$$\varepsilon_i = \sum_{k=2}^7 \int_0^{\infty} f_k(m_k) \frac{dm_k}{dt} dm_k \quad (\text{A24})$$

$$\left[\frac{\partial T}{\partial t}\right]_{\text{cnd/evp}} = \frac{L_i}{c_p} \varepsilon_i \quad (\text{A25})$$

$$\left[\frac{\partial}{\partial t}(c_p T + L_i q)\right]_{\text{dep/sub}} = 0 \quad (\text{A26})$$

where L_i is the specific latent heat of sublimation, $n_i = \sum_{k=2}^7 \int_0^{\infty} f_k(m_k) dm_k$ and $q_i = \sum_{k=2}^7 \int_0^{\infty} m_k f_k(m_k) dm_k$ are ice concentration and ice water content (IWC), respectively.

In mixed-phase cloud the rates of changes of water vapor mixing ratio and temperature due to diffusional processes are governed by

$$\left[\frac{\partial q}{\partial t}\right]_{\text{diff}} = -\varepsilon_w - \varepsilon_i \quad (\text{A27})$$

$$\left[\frac{\partial T}{\partial t}\right]_{\text{diff}} = \frac{L_w}{c_p} \varepsilon_w + \frac{L_i}{c_p} \varepsilon_i \quad (\text{A28})$$

**Simulating
mixed-phase Arctic
stratus clouds**

I. Sednev et al.

Title Page

Abstract

Introduction

Conclusions

References

Tables

Figures

◀

▶

◀

▶

Back

Close

Full Screen / Esc

Printer-friendly Version

Interactive Discussion



Simulating mixed-phase Arctic stratus clouds

I. Sednev et al.

Title Page

Abstract

Introduction

Conclusions

References

Tables

Figures

◀

▶

◀

▶

Back

Close

Full Screen / Esc

Printer-friendly Version

Interactive Discussion



where ε_w and ε_i are rates of changes of LWC and IWC, which are defined by Eq. (A16) and Eq. (A24), respectively. Both ε_w and ε_i depend among other characteristics on supersaturation w.r.t. water S_w and ice S_i that change during one microphysical time step. To account in this fact and calculate ε_w and ε_i , we define size distribution function for each type of hydrometeors on the mass grids. The mass grid for each type of hydrometeor is represented by different numbers of mass bins N_k :

$$m_{kj} = m_{k0} a_k^{\frac{j-1}{J_{k0}}}, \quad (\text{A29})$$

where j is the mass bin number, m_{k0} is the minimal mass for hydrometeor of type k , J_{k0} and $a_k > 1$ are parameters that characterize the mass grid. For example, $N_k=33$, $J_{k0}=1$ and $a_k=2$ were used in KS96.

Diffusional growth (evaporation) of water droplets of mass m_{1j} in Eq. (A16) is expressed as (PK78):

$$\frac{dm_{1j}}{dt} = \Psi_{1j} S_w, \quad \Psi_{1j} = \frac{4\pi C_{1j}}{G_w}, \quad G_w = \frac{R_v T}{e_{sw} D_v} + \frac{R_v L_w}{(L_w - R_v T) k_a} \quad (\text{A30})$$

The changes of ice particles mass m_{kj} ($k > 1$) due to deposition (sublimation) in Eq. (A24) is written as (PK78):

$$\frac{dm_{kj}}{dt} = \Psi_{kj} S_i, \quad \Psi_{kj} = \frac{4\pi C_{kj}}{G_i}, \quad G_i = \frac{R_v T}{e_{si} D_v} + \frac{R_v L_i}{(L_i - R_v T) k_a} \quad (\text{A31})$$

In the above, D_v , k_a , and R_v are the water and air diffusivity coefficients and the moist air gas constant, respectively; expressions for the “electrostatic capacitance” of particles of different shape C_{kj} are taken from PK78 (see also KS96).

The method used for the calculation of supersaturation (SS) is similar to that used by Tzivion et al. (1989) and KS96 with some additional modifications. The calculation of SS w.r.t. water $S_w = (e/e_{sw} - 1)$ and ice $S_i = (e/e_{sw} - 1)$ (where e , e_{sw} , and e_{si} are water vapor pressure and its saturated values w.r.t. water and ice, respectively),

Simulating mixed-phase Arctic stratus clouds

I. Sednev et al.

Title Page

Abstract

Introduction

Conclusions

References

Tables

Figures

◀

▶

◀

▶

Back

Close

Full Screen / Esc

Printer-friendly Version

Interactive Discussion



are performed in two steps. First, the equations for the advection of potential temperature Θ and water vapor mixing ratio q are integrated during a dynamical time step Δt_{dyn} without microphysical terms. As a result, the values of supersaturations S_w^* and S_i^* , as well as the non-microphysical tendencies of $(\delta S_w / \delta t)_{\text{dyn}} = (S_w^* - S_w^0) / \Delta t_{\text{dyn}}$ and $(\delta S_i / \delta t)_{\text{dyn}} = (S_i^* - S_i^0) / \Delta t_{\text{dyn}}$ are calculated at each grid point. The dynamical time step is divided into several microphysical time steps, Δt_{dif} . The change of supersaturation at each microphysical time step is calculated as the sum of the non-microphysical tendency [e.g., $(\delta S_{w,i} / \delta t)_{\text{dyn}} \Delta t_{\text{dif}}$] and changes caused by diffusional growth/evaporation of liquid phase or deposition/sublimation of ice phase.

Using Eqs. (A27)–(A28), (A30)–(A31), definitions Eqs. (A16)–(A24), expression for the ratio $q=0.622(e/p)$, and dependence of the saturation vapor pressure over water e_{sw} and ice e_{si} on temperature, one can derive the following equations for S_w and S_i (KS96):

$$\frac{dS_w}{dt} = -P_w S_w - P_i S_i \quad (\text{A32})$$

$$\frac{dS_i}{dt} = -R_w S_w - R_i S_i \quad (\text{A33})$$

Coefficients P_w , P_i , R_w , and R_i in Eqs. (A32) – (A33) are given by

$$P_w = \frac{e}{e_{sw}} \left(\frac{1}{q} + \frac{L_w}{c_p} \frac{de_{sw}}{dT} \right) \int_0^\infty \Psi_w f_1(m_1) dm_1 \quad (\text{A34})$$

$$P_i = \frac{e}{e_{sw}} \left(\frac{1}{q} + \frac{L_i}{c_p} \frac{de_{sw}}{dT} \right) \sum_{k=2}^7 \int_0^\infty \Psi_i f_k(m_k) dm_k \quad (\text{A35})$$

$$R_w = \frac{e}{e_{si}} \left(\frac{1}{q} + \frac{L_w}{c_p} \frac{de_{si}}{dT} \right) \int_0^\infty \Psi_w f_1(m_1) dm_1 \quad (\text{A36})$$

$$R_i = \frac{e}{e_{si}} \left(\frac{1}{q} + \frac{L_i}{c_p} \frac{de_{si}}{dT} \right) \sum_{k=2}^7 \int_0^\infty \Psi_i f_k(m_k) dm_k \quad (\text{A37})$$

where de_{sw}/dT and de_{si}/dT are any analytical formulae that express dependence of saturation pressure with respect to water e_{sw} and ice e_{si} on temperature.

If the microphysical time step Δt_{dif} is small enough, the coefficients Eqs. (A34)–(A37) can be considered as constants, and the analytical solution of Eqs. (A32)–(A33) during the time $\tau \leq \Delta t_{\text{dif}}$ can be written as KS96:

$$S_w(t_0 + \tau) = \alpha^{-1} \{ S_w(t_0) [\gamma \exp(-\beta\tau) + \beta \exp(\gamma\tau)] + [P_w S_w(t_0) + P_i S_i(t_0)] [\exp(-\beta\tau) - \exp(\gamma\tau)] \} \quad (\text{A38})$$

and

$$S_i(t_0 + \tau) = \alpha^{-1} \{ S_i(t_0) [\gamma \exp(-\beta\tau) + \beta \exp(\gamma\tau)] + [R_w S_w(t_0) + R_i S_i(t_0)] [\exp(-\beta\tau) - \exp(\gamma\tau)] \}, \quad (\text{A39})$$

Title Page

Abstract

Introduction

Conclusions

References

Tables

Figures

◀

▶

◀

▶

Back

Close

Full Screen / Esc

Printer-friendly Version

Interactive Discussion



where

$$\alpha^2 = (P_w - R_i)^2 + 4P_iR_w \quad (\text{A40})$$

$$\beta = \frac{\alpha + P_w + R_i}{2} \quad (\text{A41})$$

$$\gamma = \frac{\alpha - P_w - R_i}{2} \quad (\text{A42})$$

To account the fact that S_w and S_i are non-constant during time step the following iteration procedure is used. Expressions Eqs. (A30) – (A31) and solution (A38) – (A39) permit us to calculate new water ($k=1$) and ice ($k>1$) particle masses m_{kj} in j th bin:

$$m_{kj}^{(s+1)} = (1 - \tau_w) m_{kj}^{(s)} + \tau_w \left[m_{kj}^{(t_0)} + \int_{t_0}^{t_0+\tau} \Psi_{kj} S_w d\tau \right] \quad (\text{A43})$$

$$m_{kj}^{(s+1)} = (1 - \tau_i) m_{kj}^{(s)} + \tau_i \left[m_{kj}^{(t_0)} + \int_{t_0}^{t_0+\tau} \Psi_{kj} S_i d\tau \right], \quad (\text{A44})$$

where $0 \leq \tau_{w/i} \leq 1$ are parameters, s is iteration number, and $m_{kj}^{(t_0)}$ are given by Eq. (A29). It was found that effective stopping criterion of the iteration process Eqs. (A43)–(A44) is

$$\max |m_{kj}^{(s+1)} - m_{kj}^{(s)}| \leq \delta \quad (\text{A45})$$

where δ is a minimum mass increment permitted. If criterion Eq. (A45) is satisfied, we use $m_{kj}^{(s+1)}$ and the method by Kovetz and Olund (1969), which conserves both concentration Eqs. (A10), (A20) and mass Eqs. (A12), (A21), to calculate new values of distribution functions $f_{kj}(t_0 + \tau)$ on regular mass grids. To derive expressions for the changes of LWC Δq_w and IWC Δq_i during timestep τ , we use Eq. (A29) and definition

Title Page

Abstract

Introduction

Conclusions

References

Tables

Figures

◀

▶

◀

▶

Back

Close

Full Screen / Esc

Printer-friendly Version

Interactive Discussion



of hydrometeor content Eq. (A4), which can be rewritten as

$$q_k = \int_0^\infty m_k f_k(m_k) dm_k = \int_0^\infty m_k^2 f_k(m_k) \frac{dm_k}{m_k} = \frac{\ln a_k}{J_{k0}} \int_0^\infty m_k^2 f_k(m_k) dJ \quad (\text{A46})$$

Because of the fact that $dJ=1$, we replace integral by summation and obtain

$$\Delta q_w = q_w(t_0 + \tau) - q_w(t_0) = \frac{\ln a_1}{J_{10}} \sum_{j=1}^{N_1} m_{1j}^2 [f_{1j}(t_0 + \tau) - f_{1j}(t_0)] \quad (\text{A47})$$

$$\Delta q_i = q_i(t_0 + \tau) - q_i(t_0) = \sum_{k=2}^7 \frac{\ln a_k}{J_{k0}} \sum_{j=1}^{N_k} m_{kj}^2 [f_{kj}(t_0 + \tau) - f_{kj}(t_0)] \quad (\text{A48})$$

Since Δq_w and Δq_i are known, mass and energy conservation laws are used to calculate new temperature $T(t_0 + \tau)$ and water vapor mixing ratio $q(t_0 + \tau)$ at the end of microphysical time step.

A5 Effective radius definitions

- 5 Effective radius for droplet R_{ew} shown in Table 3, Table 4, Table 5, and Table 7 is defined as

$$R_{ew} = \int_0^\infty f_1(m) r_1^3(m) dm / \int_0^\infty f_1(m) r_1^2(m) dm \quad (\text{A49})$$

where $r_1(m)$ is droplet radius.

Effective radius for plate R_{ep} and dendrite R_{ed} crystals provided in Table 6 are given by

$$R_{ep} = \int_0^\infty f_3(m) r_3^3(m) dm / \int_0^\infty f_3(m) r_3^2(m) dm \quad (\text{A50})$$

Simulating mixed-phase Arctic stratus clouds

I. Sednev et al.

Title Page

Abstract

Introduction

Conclusions

References

Tables

Figures

◀

▶

◀

▶

Back

Close

Full Screen / Esc

Printer-friendly Version

Interactive Discussion



Simulating mixed-phase Arctic stratus clouds

I. Sednev et al.

Title Page

Abstract

Introduction

Conclusions

References

Tables

Figures

◀

▶

◀

▶

Back

Close

Full Screen / Esc

Printer-friendly Version

Interactive Discussion



$$R_{ed} = \int_0^{\infty} f_4(m)r_4^3(m)dm / \int_0^{\infty} f_4(m)r_4^2(m)dm \quad (\text{A51})$$

In Eqs. (A50)–(A51), $r_3(m)$ and $r_4(m)$ are bulk radius for plate-like and dendrite crystals, respectively.

The “composite” ice phase effective radius shown in is calculated as

$$R_{ei} = \sum_{k=3}^4 \int_0^{\infty} f_k(m)r_k^3(m)dm / \sum_{k=3}^4 \int_0^{\infty} f_k(m)r_k^2(m)dm \quad (\text{A52})$$

where $r_k(m)$ are bulk radius for columns ($k=2$), plates ($k=3$), and dendrites ($k=4$), respectively.

The “composite” ice phase effective radius shown in Table 7 and Table 8 is defined as

$$R_{ei} = \sum_{k=3}^4 \int_0^{\infty} f_k(m)r_m^3(m)dm / \sum_{k=3}^4 \int_0^{\infty} f_k(m)r_m^2(m)dm \quad (\text{A53})$$

where $r_m(m)$ is melted radius.

Both Eqs. (A52) and (A53) definitions are useful for analysis of radar data because they provide information about crystal sizes.

Because there exist multiple definitions of R_{ei} used for radiation calculations (McFarquhar and Heymsfield, 1998), the definition of Fu (1996) is used in MPACE intercomparison study (Klein et al., 2007). This definition preserves the ratio between the ice water content (IWC) and cross-sectional area of the particle distributions (A_c), and it is given by:

$$R_{ei} = \frac{\sqrt{3}IWC}{3\rho_i A_c} \quad (\text{A54})$$

where $\rho_i=0.9 \text{ g cm}^{-3}$ is the bulk density (mass divided by volume) of the ice crystals. Definition Eq. (A54) is used to provide ice effective radius for radiation calculations.

Acknowledgements. This research was supported by the DOE Atmospheric Radiation Program.

5 References

- Alheit, R. R., Flossmann, A. I., and Pruppacher, H. R.: A theoretical study of the wet removal of atmospheric pollutants. Part IV: The uptake and redistribution of aerosol particles through nucleation and impaction scavenging by growing cloud drops and ice particles, *J. Atmos. Sci.*, 47, 870–887, 1990. [11768](#), [11782](#)
- 10 Beard, K. V.: Ice initiation in warm-base convective clouds: An assessment of microphysical mechanisms, *Atmos. Res.*, 28, 125–152, 1992. [11781](#)
- Bott, A., Sievers, U., and Zdunkowski, W.: A radiation fog model with a detailed treatment of the interaction between radiative transfer and fog microphysics, *J. Atmos. Sci.*, 47, 2153–2166, 1990. [11757](#)
- 15 Chen, J.-P. and Lamb, D.: The theoretical basis for the parameterization of ice crystal habits: Growth by vapor deposition, *J. Atmos. Sci.*, 51, 1207–1221, 1994a.
- Chen, J.-P. and Lamb, D.: Simulation of cloud microphysical and chemical processes using a multicomponent framework. Part I: Description of the microphysical model, *J. Atmos. Sci.*, 51, 2613–2630, 1994b. [11758](#), [11776](#)
- 20 Chen, J.-P. and Lamb, D.: Simulation of cloud microphysical and chemical processes using a multicomponent framework. Part II: Microphysical evolution of a wintertime orographic cloud, *J. Atmos. Sci.*, 51, 2293–2312, 1999. [11758](#)
- Clark, T. L.: Numerical modeling of the dynamics and microphysics of warm cumulus convection, *J. Atmos. Sci.*, 30, 857–878, 1973. [11757](#)
- 25 Cooper, W. A.: A possible mechanism for contact nucleation, *J. Atmos. Sci.*, 31, 1832–1837, 1974. [11781](#)
- Cotton, W. R.: Numerical simulation of precipitation development in supercooled cumuli – Part I., *Mon. Weather Rev.*, 100, 757–763, 1972a. [11757](#)

Simulating mixed-phase Arctic stratus clouds

I. Sednev et al.

Title Page

Abstract

Introduction

Conclusions

References

Tables

Figures

◀

▶

◀

▶

Back

Close

Full Screen / Esc

Printer-friendly Version

Interactive Discussion



**Simulating
mixed-phase Arctic
stratus clouds**

I. Sednev et al.

Title Page

Abstract

Introduction

Conclusions

References

Tables

Figures

◀

▶

◀

▶

Back

Close

Full Screen / Esc

Printer-friendly Version

Interactive Discussion

- Cotton, W. R.: Numerical simulation of precipitation development in supercooled cumuli – Part II., *Mon. Weather. Rev.*, 100, 764–784, 1972b. [11758](#), [11776](#)
- Curry, J. A. and Ebert, E. E.: Annual cycle of radiation fluxes over the Arctic Ocean: Sensitivity to cloud optical properties, *J. Climate*, 5, 1267–1280, 1992. [11757](#)
- 5 Del Genio, A. D., Yao M.-S., Kovari W., and Lo, K. K.-W.: A prognostic cloud water parameterization for global climate models, *J. Climate*, 9, 270–304, doi:10.1175/1520-0442(1996)009<0270:APCWPF¿2.0.CO;2, 1996. [11760](#)
- Del Genio, A. D., Kovari, W., Yao, M.-S., and Jonas, J.: Cumulus microphysics and climate sensitivity, *J. Climate*, 18, 2376–2387, doi:10.1175/JCLI3413.1, 2005. [11760](#)
- 10 Deshler, T. and Vali, G.: Atmospheric concentrations of submicron contact-freezing nuclei, *J. Atmos. Sci.*, 49, 773–784, 1992. [11781](#)
- Ferrier, B. S.: A double-moment multiple-phase four-class bulk ice scheme. Part I: Description, *J. Atmos. Sci.*, 51, 249–280, 1994. [11775](#)
- Flossmann, A. I., Hall, W. D., and Pruppacher, H. R.: A theoretical study of the wet removal of atmospheric pollutants. Part I: The redistribution of aerosol particles captured through nucleation and impaction scavenging by growing cloud drops, *J. Atmos. Sci.*, 42, 583–606, 1985. [11758](#)
- 15 Fridlind, A. M., Ackerman, A. S., McFarquhar, G., Zhang, G., Poellot, M. R., DeMott, P. J., Prenni A. J., and Heymsfield A. J.: Ice properties of single-layer stratocumulus during the Mixed-Phase Arctic Cloud Experiment (M-PACE): Part II, Model results, *J. Geophys. Res.*, 112, D24202, doi:10.1029/2007JD008646, 2007. [11759](#)
- 20 Fu, Q.: An accurate parameterization of the solar radiative properties of cirrus clouds, *J. Climate*, 9, 2058–2082, 1996. [11770](#), [11792](#)
- Gokhale, N. R. and Goold, J.: Droplet freezing by surface nucleation, *J. Appl. Meteorol.*, 7, 870–873, 1968. [11781](#)
- 25 Gokhale, N. R. and Spengler, J. D.: Freezing of freely suspended, supercooled water drops by contact nucleation, *J. Appl. Meteorol.*, 11, 157–160, 1972. [11781](#)
- Hall, W. D.: A detailed microphysical model within a two-dimensional dynamic framework: Model description and preliminary results, *J. Atmos. Sci.*, 37, 2486–2507, 1980. [11757](#)
- 30 Harrington, J. Y., Reisin, T., Cotton, W. R., and Kreidenweis, S. M.: Cloud resolving simulations of Arctic stratus. Part II: Transition-season clouds, *Atmos. Res.*, 51, 45–75, 1999. [11758](#)
- Hobbs, P. V. and Scott W. D.: A theoretical study of the variation of ice crystal habits with temperature, *J. Geophys. Res.*, 70, 5025–5034, 1965. [11776](#)



- Hobbs, P. V.: Ice multiplication in clouds, *J. Atmos. Sci.*, 26, 315–318, 1969. [11781](#)
- Hobbs, P. V. and Rangno, A. L.: Ice particle concentrations in clouds, *J. Atmos. Sci.*, 42, 2523–2549, 1985. [11781](#)
- Hobbs, P. V.: Ice in clouds. Proceedings of AMS Conference on Cloud Physics, San Francisco, CA, July 23–27, 600–606, 1990. [11781](#), [11782](#)
- 5 Khain, A. P. and Sednev, I.: Simulation of hydrometeor size spectra evolution by water-water, ice-water and ice-ice interactions, *Atmos. Res.*, 36, 107–138, 1995. [11759](#), [11761](#), [11768](#), [11777](#)
- Khain, A. P. and Sednev, I.: Simulation of precipitation formation in the Eastern Mediterranean coastal zone using a spectral microphysics cloud ensemble model, *Atmos. Res.*, 43, 77–110, 1996. [11758](#), [11759](#), [11761](#), [11777](#), [11782](#)
- 10 Khorostyanov, V. I. and Sassen, K.: Cirrus cloud simulation using explicit microphysics and radiation. Part I: Model description, *J. Atmos. Sci.*, 55, 1808–1821, 1998. [11757](#)
- Klein, S., Fridlind, A., McCoy, R., McFarquhar, G., Menon, S., Morrison, H., Veron, D., Xie, S.-H., Yio, J. J., and Zhang, M.: Procedures for ARM CPMWG Case 5 / GCSS Polar Cloud WG SCM/CRM/LES Intercomparison Case f2004: ARM Mixed-Phase Arctic Cloud Experiment (M-PACE), 5–22 October 2004, http://science.arm.gov/wg/cpm/scm/scmic5/docs/Document_Lic5_v3.2.1.pdf, 2007. [11762](#), [11763](#), [11792](#)
- 15 Koenig, L. R.: Numerical modeling of ice deposition, *J. Atmos. Sci.*, 28, 226–237, 1971. [11776](#)
- Kogan, Y.: The simulation of a convective cloud in a 3-D model with explicit microphysics. Part I: Model description and sensitivity experiments, *J. Atmos. Sci.*, 48, 1160–1189, 1991. [11757](#)
- 20 Kogan, Y. K., Khairoutdinov, M. P., Lilly, D. K., Kogan, Z. N., and Liu, Q.: Modeling of stratocumulus cloud layers in a large eddy simulation model with explicit microphysics, *J. Atmos. Sci.*, 52, 2923–2940, 1995. [11757](#)
- 25 Kovetz, A. and Olund, B.: The effect of coalescence and condensation on rain formation in a cloud of finite vertical extent, *J. Atmos. Sci.*, 26, 1060–1065, 1969. [11790](#)
- Lamb, D. and Hobbs, P. V.: Growth rates and habits of ice crystal grown from water vapor, *J. Atmos. Sci.*, 28, 1506–1509, 1971. [11776](#)
- Lamb, D. and Scott, D.: The mechanism of ice crystal growth and habit formation, *J. Atmos. Sci.*, 31, 570–580, 1974. [11776](#)
- 30 Lord, S. J., Willoughby, H. E., and Piotrowicz, J. M.: Role of a parameterized ice-phase microphysics in an axisymmetric tropical cyclone model, *J. Atmos. Sci.*, 41, 2836–2848, 1984. [11775](#)

Simulating mixed-phase Arctic stratus clouds

I. Sednev et al.

Title Page

Abstract

Introduction

Conclusions

References

Tables

Figures

◀

▶

◀

▶

Back

Close

Full Screen / Esc

Printer-friendly Version

Interactive Discussion



**Simulating
mixed-phase Arctic
stratus clouds**

I. Sednev et al.

Title Page

Abstract

Introduction

Conclusions

References

Tables

Figures

◀

▶

◀

▶

Back

Close

Full Screen / Esc

Printer-friendly Version

Interactive Discussion



Luo, Y., Xu, K.-M., Morrison, H., and McFarquhar, G.: Arctic mixed-phase clouds simulated by a cloud-resolving model: Comparison with ARM observations and sensitivity to microphysics parameterizations, *J. Atmos. Sci.*, 65, 1285–1303, 2008. [11774](#)

Lynn, B. H., Khain, A. P., Dudhia, J., Rosenfeld, D., Pokrovsky, A., and Seifert, A.: Spectral (bin) microphysics coupled with a mesoscale model (MM5). Part II: Simulation of a CaPE rain event with a squall line, *Mon. Weather. Rev.*, 133, 59–71, 2005. [11758](#), [11777](#)

Macklin, W. C.: The density and structure of ice formed by accretion, *Q. J. R. Meteorol. Soc.*, 88, 30–50, 1962 [11757](#), [11776](#), [11777](#)

Magono, C. and Lee, C.: Meteorological classification of natural snow crystals. *J. Fac. ci. Hokkaido Univ. ser. VII*, 2(N4), 321–335, 1966. [11776](#), [11777](#)

McFarquhar, G. M., Zhang, G., Poellot, M., Kok, G., McCoy, R., Tooman, T., Fridlind, A., and Heymsfield, A. J.: Ice properties of single-layer stratocumulus during the Mixed-Phase Arctic Cloud Experiment (MPACE): Part I. Observations, *J. Geophys. Res.*, 112, D24201, 2007. [11759](#), [11764](#), [11769](#), [11770](#)

McFarquhar, G. M. and Heymsfield, A. J.: The definition and significance of an effective radius for ice clouds, *J. Atmos. Sci.*, 55, 2039–2052, 1998. [11770](#), [11792](#)

Menon, S., Del Genio, A. D., Koch, D., and Tselioudis, G.: GCM simulations of the aerosol indirect effect: Sensitivity to cloud parameterization and aerosol burden, *J. Atmos. Sci.*, 59, 692–713, 2002. [11760](#)

Menon, S., Brenguier, J.-L., Boucher, O., Davison, P., Del Genio, A. D., Feichter, J., Ghan, S., Guibert, S., Liu, X., Lohmann, U., Pawloska, H., Penner, J. E., Quaas, J., Roberts, D. L., Schüller, L., and Snider, J.: Evaluating aerosol/cloud/radiation process parameterizations with single-column observations, *J. Geophys. Res.* 108, D24, 4762, doi:10.1029/2003JD003902, 2003. [11759](#)

Meyers, M. P., DeMott, P. J., and Cotton, W. R.: New primary ice-nucleation parameterizations in an explicit cloud model, *J. Appl. Meteor.*, 31, 708–721, 1992. [11761](#), [11767](#), [11782](#)

Miller, T. L. and Young, K. C.: A numerical simulation of ice crystal growth from the vapor phase, *J. Atmos. Sci.*, 36, 458–469, 1979. [11776](#)

Morrison, H., Curry, J. A., and Khvorostyanov, V. I.: A new double-moment microphysics scheme for application in cloud and climate models. Part I: Description, *J. Atmos. Sci.*, 62, 1665–1677, 2005. [11775](#)

Morrison, H., Pinto, J. O., Curry, J. A., and McFarquhar, G. M.: Sensitivity of modeled arctic mixed-phase stratocumulus to cloud condensation and ice nuclei over regionally-varying sur-

- face conditions, *J. Geophys. Res.*, 113, D05203, doi:10.1029/2007JD008729, 2008. [11774](#)
- Mossop, S. C.: The origin and concentration of ice crystals in clouds, *Bull. Am. Meteorol. Soc.*, 66, 264–273, 1985. [11781](#)
- Murakami, M., Matsuo T., Mizuno H., and Yamada Y.: Microphysical structures of convective snow clouds over the sea of Japan, *Proceedings of the 11th Int. Conference on Clouds and Precipitation*, Montreal, 17–21 August, 1992, 207–210, 1992. [11782](#)
- Ogura, Y. and Takahashi, T.: The development of warm rain in a cumulus model, *J. Atmos. Sci.*, 30, 262–277, 1973. [11757](#)
- Ovtchinnikov, M. and Kogan, Y. L.: An investigation of ice production mechanisms using a 3-D cloud model with detailed microphysics. Part I: Model description, *J. Atmos. Sci.*, 57, 2989–3003, 2000a. [11757](#)
- Ovtchinnikov, M., Kogan, Y. L., and Blyth, A. M.: An investigation of ice production mechanisms using a 3D cloud model with detailed microphysics. Part II: Case study of New Mexico cumulus clouds, *J. Atmos. Sci.*, 57, 3004–3021, 2000. [11758](#)
- Pruppacher, H. R. and Klett, J. D.: *Microphysics of clouds and precipitation*. Reidel Publishing Company, 714 pp., 1978. [11768](#), [11777](#)
- Rangno, A. L. and Hobbs, P. V.: Ice particle concentrations and precipitation development in small polar maritime cumuliform clouds, *Q. J. R. Meteor. Soc.*, 117, 207–241, 1991. [11782](#)
- Rasmussen, R. M., Geresdi, I., Thompson, G., Manning, K., and Karplus, E.: Freezing drizzle formation in stably stratified layer clouds: The role of radiative cooling of cloud droplets, cloud condensational nuclei, and ice initiation, *J. Atmos. Sci.*, 59, 837–860, 2002. [11758](#)
- Reisin, T., Levin, Z., and Tzviou, S.: Rain production in convective clouds as simulated in an axisymmetric model with detailed microphysics. Part I: Description of the model, *J. Atmos. Sci.*, 53, 497–519, 1996a. [11758](#)
- Reisin, T., Levin, Z., and Tzviou, S.: Rain production in convective clouds as simulated in an axisymmetric model with detailed microphysics. Part II: Effects of varying drops and ice initiation, *J. Atmos. Sci.*, 53, 1815–1837, 1996b. [11758](#)
- Sednev, I. and Khain, A. P.: Numerical simulation of precipitation enhancement over the land due to seeding induced redistribution of precipitation in the Eastern Mediterranean coastal zone. *Proceedings of the Sixth WMO Scientific Conference on Weather Modification and Applied Cloud Physics*, Paestum, Italy, 28 May–4 June, 587–590, 1994. [11757](#), [11758](#)
- Scott, B. C. and Hobbs, P. V.: A theoretical study of the evolution of mixed-phase cumulus clouds, *J. Atmos. Sci.*, 34, 812–826, 1977. [11758](#)

**Simulating
mixed-phase Arctic
stratus clouds**I. Sednev et al.

[Title Page](#)[Abstract](#)[Introduction](#)[Conclusions](#)[References](#)[Tables](#)[Figures](#)[◀](#)[▶](#)[◀](#)[▶](#)[Back](#)[Close](#)[Full Screen / Esc](#)[Printer-friendly Version](#)[Interactive Discussion](#)

- Stevens, B., Feingold, G., Cotton, W. R., and Walko, R. L.: Elements of the microphysical structure of the numerically simulated nonprecipitating stratocumulus, *J. Atmos. Sci.*, 53, 980–1006, 1996. [11757](#)
- 5 Takahashi, T.: Hail in an axisymmetric cloud model, *J. Atmos. Sci.*, 33, 1579–1601, 1976. [11758](#), [11782](#)
- Takahashi, T., Endoh, T., and Wakahama, G.: Vapor diffusional growth of free-falling snow crystals between -3 and -23° , *J. Meteor. Soc. Jap.*, 69, 15–30, 1991. [11783](#)
- Takahashi, T. and Shimura, K.: Tropical Rain Characteristics and Microphysics in a Three-Dimensional Cloud Model, *J. Atmos. Sci.*, 61, 2817–2845, 2004. [11758](#)
- 10 Tao, W.-K., Simpson, J., and McCumber, M.: An ice-water saturation adjustment, *Mon. Weather Rev.*, 117, 231–235, 1989. [11775](#)
- Tzivion, S., Feingold, G., and Levin, Z.: The evolution of raindrop spectra. Part II: Collisional collection/breakup and evaporation in a rainshaft, *J. Atmos. Sci.*, 46, 3312–3327, 1989. [11757](#)
- 15 Vali, G.: Quantitative evaluation of experimental results on the heterogeneous freezing nucleation of supercooled liquids, *J. Atmos. Sci.*, 28, 402–409, 1971. [11781](#)
- Vali, G.: Atmospheric ice nucleation – a review, *J. Rech. Atmos.*, 19, 105–115, 1985. [11781](#)
- Verlinde, J., Harrington J. Y., McFarquhar G. M., et al.: The Mixed-Phase Arctic Cloud Experiment (M-PACE), *Bull. Amer. Meteorol. Soc.*, 88, 205–221, doi:10.1175/BAMS-88-2-205, 2007. [11759](#)
- 20 Yin, Y., Levin, Z., Reisin, T., and Tzivion, S.: The effects of giant cloud condensational nuclei on the development of precipitation in convective clouds: A numerical study, *Atmos. Res.*, 53, 91–116, 2000a. [11758](#)
- Yin, Y., Levin, Z., Reisin, T., and Tzivion, S.: Seeding convective clouds with hygroscopic flares: Numerical simulations using a cloud model with detailed microphysics, *J. Appl. Meteor.*, 39, 1460–1472, 2000b. [11758](#)
- 25 Young, K. C.: The role of contact nucleation in ice phase initiation in clouds, *J. Atmos. Sci.*, 31, 768–776, 1974a. [11781](#)

Simulating mixed-phase Arctic stratus clouds

I. Sednev et al.

Title Page

Abstract

Introduction

Conclusions

References

Tables

Figures

◀

▶

◀

▶

Back

Close

Full Screen / Esc

Printer-friendly Version

Interactive Discussion



**Simulating
mixed-phase Arctic
stratus clouds**

I. Sednev et al.

Table 1. Description of sensitivity experiments without ice microphysics.

EXP	updated CCN profile	water-water interactions
W1	No	No
W2	No	Yes
W3	Yes	Yes
W4	Yes	No

[Title Page](#)[Abstract](#)[Introduction](#)[Conclusions](#)[References](#)[Tables](#)[Figures](#)[I ◀](#)[▶ I](#)[◀](#)[▶](#)[Back](#)[Close](#)[Full Screen / Esc](#)[Printer-friendly Version](#)[Interactive Discussion](#)

**Simulating
mixed-phase Arctic
stratus clouds**

I. Sednev et al.

Table 2. Description of sensitivity experiments with ice microphysics. N_{ms} and A_f are constants in Eqs. (1) and (2), respectively, that influence ice crystal concentration increase due to the different ice initiation mechanisms.

	A_f	N_{ms}
EXP	kg^{-1}	L^{-1}
I1	0.0	1.0
I2	0.0	0.1
I3	0.1	0.0
I4	0.1	0.1

[Title Page](#)[Abstract](#)[Introduction](#)[Conclusions](#)[References](#)[Tables](#)[Figures](#)[I◀](#)[▶I](#)[◀](#)[▶](#)[Back](#)[Close](#)[Full Screen / Esc](#)[Printer-friendly Version](#)[Interactive Discussion](#)

Simulating mixed-phase Arctic stratus clouds

I. Sednev et al.

Table 3. Microphysical properties of single layer Arctic clouds observed during MPACE IOP (McFarquhar et al., 2007).

DATE	LWC mg m^{-3}	R_{ew} μm	N_w cm^{-3}	IWC mg m^{-3}	R_{ei} μm	N_i L^{-1}
10/09	193±	9.4±	72.2±	25±	25.5±	5.6±
	131	2.2	34.4	60	1.3	12.1
10/10 a	174±	9.0±	25.7±	15±	24.6±	1.6±
	120	2.4	13.4	32	2.3	2.4
10/10 b	154±	10.9±	23.0±	6±	25.8±	2.0±
	116	2.6	9.9	6	5.7	2.1
10/12	193±	9.1±	51.7±	6±	25.2±	2.1±
	116	2.3	16.6	18	7.3	5.0

[Title Page](#)
[Abstract](#)
[Introduction](#)
[Conclusions](#)
[References](#)
[Tables](#)
[Figures](#)
[Back](#)
[Close](#)
[Full Screen / Esc](#)
[Printer-friendly Version](#)
[Interactive Discussion](#)


Simulating mixed-phase Arctic stratus clouds

I. Sednev et al.

Table 4. Average liquid water content (LWC), effective radius (R_{ew}), concentration (N_w), and precipitation flux (P_w) of water droplets in experiments without ice microphysics.

EXP	LWC mg m^{-3}	R_{ew} μm	N_w cm^{-3}	P_w mm d^{-1}
W1	82±	18.9±	3.9±	0.6±
	57	3.9	2.9	0.3
W2	39±	28.5±	1.6±	0.6±
	27	10.0	1.0	0.2
W3	343±	10.4±	80.1±	0.7±
	124	1.0	18.3	0.3
W4	239±	11.3±	66.2±	1.5±
	101	2.9	31.3	1.3

[Title Page](#)
[Abstract](#)
[Introduction](#)
[Conclusions](#)
[References](#)
[Tables](#)
[Figures](#)
[Back](#)
[Close](#)
[Full Screen / Esc](#)
[Printer-friendly Version](#)
[Interactive Discussion](#)


Simulating mixed-phase Arctic stratus clouds

I. Sednev et al.

Table 5. Average liquid water content (LWC), effective radius (R_{ew}), concentration (N_w), and precipitation flux (P_w) of water droplets in experiments with ice microphysics.

EXP	LWC mg m^{-3}	R_{ew} μm	N_w cm^{-3}	P_w mm d^{-1}
I1	98±	15.0±	11.1±	0.9±
	104	2.2	13.3	0.4
I2	123±	10.9±	29.1±	0.5±
	93	1.3	22.5	0.1
I3	253±	10.3±	64.1±	0.5±
	108	1.1	21.3	0.3
I4	127±	11.0±	28.4±	0.5±
	94	1.3	22.1	0.1

[Title Page](#)
[Abstract](#)
[Introduction](#)
[Conclusions](#)
[References](#)
[Tables](#)
[Figures](#)
[◀](#)
[▶](#)
[◀](#)
[▶](#)
[Back](#)
[Close](#)
[Full Screen / Esc](#)
[Printer-friendly Version](#)
[Interactive Discussion](#)


Simulating mixed-phase Arctic stratus clouds

I. Sednev et al.

Table 6. Average values of ice water content (IWC_p), effective radius (R_{ep}), concentration (N_p), and precipitation flux (P_p) for plates and ice water content (IWC_d), effective radius (R_{ed}), concentration (N_d), and precipitation flux (P_d) for dendrites in experiments with ice microphysics.

EXP	IWC_p mg m^{-3}	R_{ep} μm	N_p cm^{-3}	P_p mm d^{-1}	IWC_d mg m^{-3}	R_{ed} μm	N_d cm^{-3}	P_d mm d^{-1}
I1	2±	100.9±	1.9±	0.3±	41±	160.4±	3.9±	1.4±
	1	35.8	3.0	0.1	17	42.3	1.4	0.7
I2	2±	124.9±	0.3±	0.2±	19±	234.9±	0.6±	1.0±
	2	35.4	0.3	0.0	10	59.6	0.1	0.6
I3	10±	123.9±	1.3±	0.5±	0.0±	0.0±	0.0±	0.0±
	5	31.6	0.6	0.2	0.0	0.0	0.0	0.0
I4	4±	115.2±	0.6±	0.2±	13±	243.4±	0.4±	0.7±
	2	34.4	0.2	0.1	5	60.4	0.1	0.3

Title Page

Abstract

Introduction

Conclusions

References

Tables

Figures

◀

▶

◀

▶

Back

Close

Full Screen / Esc

Printer-friendly Version

Interactive Discussion



Simulating mixed-phase Arctic stratus clouds

I. Sednev et al.

Table 7. Average values of liquid water content (LWC), effective radius (R_{ew}), and concentration (N_w) for liquid phase and ice water content (IWC), effective radius (R_{ei}), and concentration (N_i) for ice phase in experiments with ice microphysics.

EXP	LWC mg m^{-3}	R_{ew} μm	N_w cm^{-3}	IWC mg m^{-3}	R_{ei} μm	N_i L^{-1}
I1	98±	15.0±	11.1±	37±	142.7±	4.8±
	104	2.2	13.3	21	54.9	2.3
I2	123±	10.9±	29.1±	17±	202.2±	0.7±
	93	1.3	22.5	11	83.8	0.2
I3	253±	10.3±	64.1±	10±	123.9±	1.3±
	108	1.1	21.3	5	31.6	0.6
I4	127±	11.0±	28.4±	15±	157.7±	0.8±
	94	1.3	22.1	9	50.3	0.1

[Title Page](#)
[Abstract](#)
[Introduction](#)
[Conclusions](#)
[References](#)
[Tables](#)
[Figures](#)
[I◀](#)
[▶I](#)
[◀](#)
[▶](#)
[Back](#)
[Close](#)
[Full Screen / Esc](#)
[Printer-friendly Version](#)
[Interactive Discussion](#)


Simulating mixed-phase Arctic stratus clouds

I. Sednev et al.

Table 8. Composite ice phase effective radius (R_{ei}) calculated using (A53), (6), and (8), respectively, plates effective radius (R_{ep}) and dendrites effective radius (R_{ed}) calculated using (7) in experiments with ice microphysics.

EXP	R_{ei} μm	R_{ei} μm	R_{ei} μm	R_{ep} μm	R_{ed} μm
I1	536.7±	142.7±	26.7±	19.2±	29.5±
	251.6	65.0	5.7	4.3	1.2
	770.7±	202.2±	28.0±	21.9±	31.2±
I2	298.1	71.1	5.3	3.7	1.0
	227.0±	123.9±	22.4±	22.4±	0.0±
I3	75.0	31.6	3.1	3.1	0.0
	741.9±	157.7±	26.7±	21.3±	31.2±
I4	318.3	48.6	4.7	3.7	1.4

[Title Page](#)
[Abstract](#)
[Introduction](#)
[Conclusions](#)
[References](#)
[Tables](#)
[Figures](#)
[I◀](#)
[▶I](#)
[◀](#)
[▶](#)
[Back](#)
[Close](#)
[Full Screen / Esc](#)
[Printer-friendly Version](#)
[Interactive Discussion](#)


Simulating mixed-phase Arctic stratus clouds

I. Sednev et al.

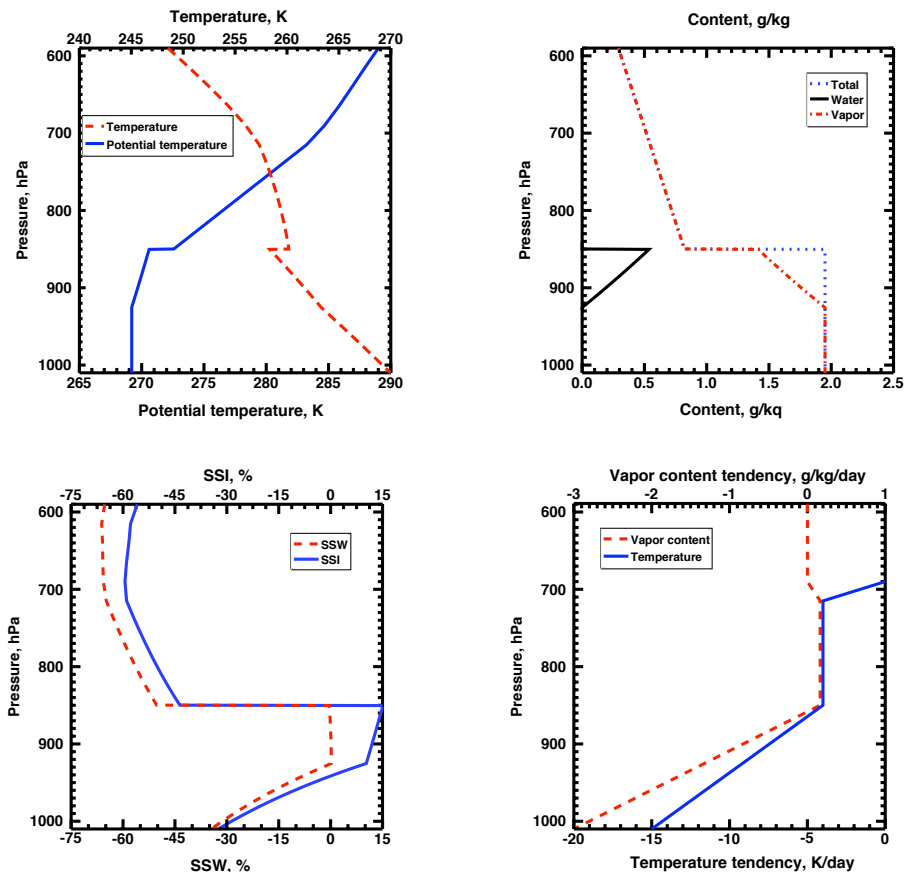


Fig. 1. Vertical profiles of temperature T and potential temperature Θ (top-left), vapor content (QV), liquid water content LWC , and total water content $TWC=QV+LWC$ (top-right), supersaturation with respect to water SSW and ice SSI (bottom-left), and large scale horizontal tendencies of temperature and vapor content (bottom-right).

[Title Page](#)
[Abstract](#)
[Introduction](#)
[Conclusions](#)
[References](#)
[Tables](#)
[Figures](#)
[◀](#)
[▶](#)
[◀](#)
[▶](#)
[Back](#)
[Close](#)
[Full Screen / Esc](#)
[Printer-friendly Version](#)
[Interactive Discussion](#)


Simulating
mixed-phase Arctic
stratus clouds

I. Sednev et al.

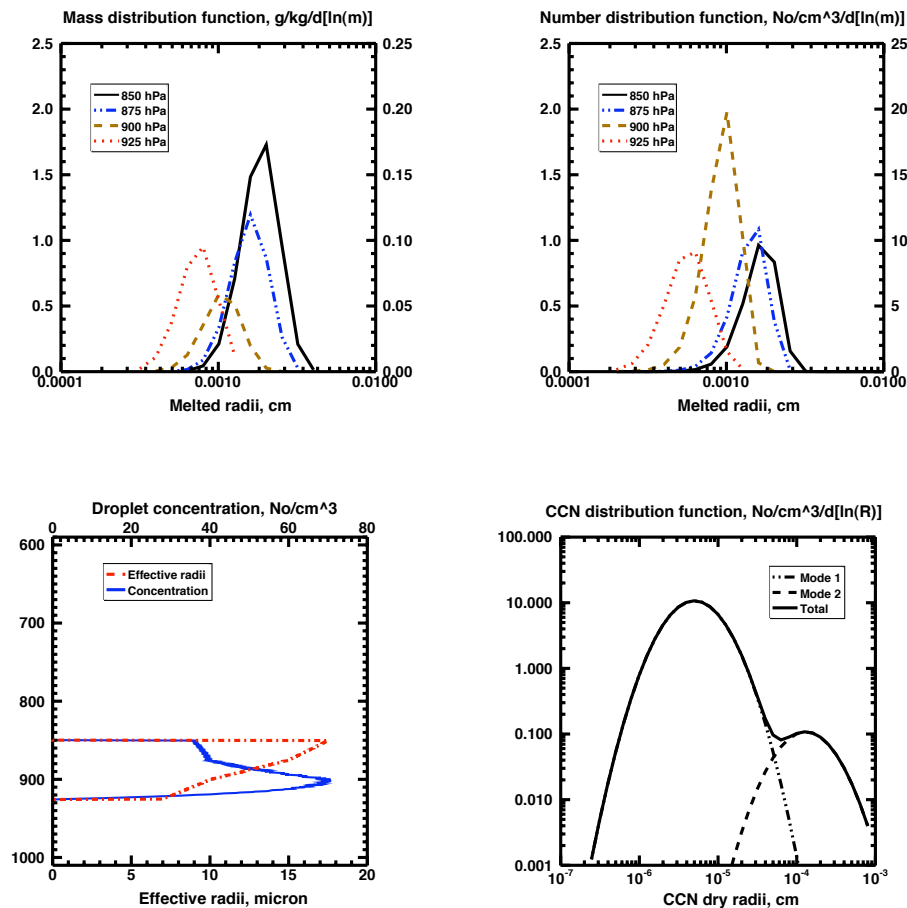


Fig. 2. Droplet mass (top-left) and number (top-right) distribution functions at different altitudes; vertical profiles of droplet concentration and effective radius (bottom-left), and CCN number distribution function (bottom-right).

[Title Page](#)[Abstract](#)[Introduction](#)[Conclusions](#)[References](#)[Tables](#)[Figures](#)[◀](#)[▶](#)[◀](#)[▶](#)[Back](#)[Close](#)[Full Screen / Esc](#)[Printer-friendly Version](#)[Interactive Discussion](#)

Simulating mixed-phase Arctic stratus clouds

I. Sednev et al.

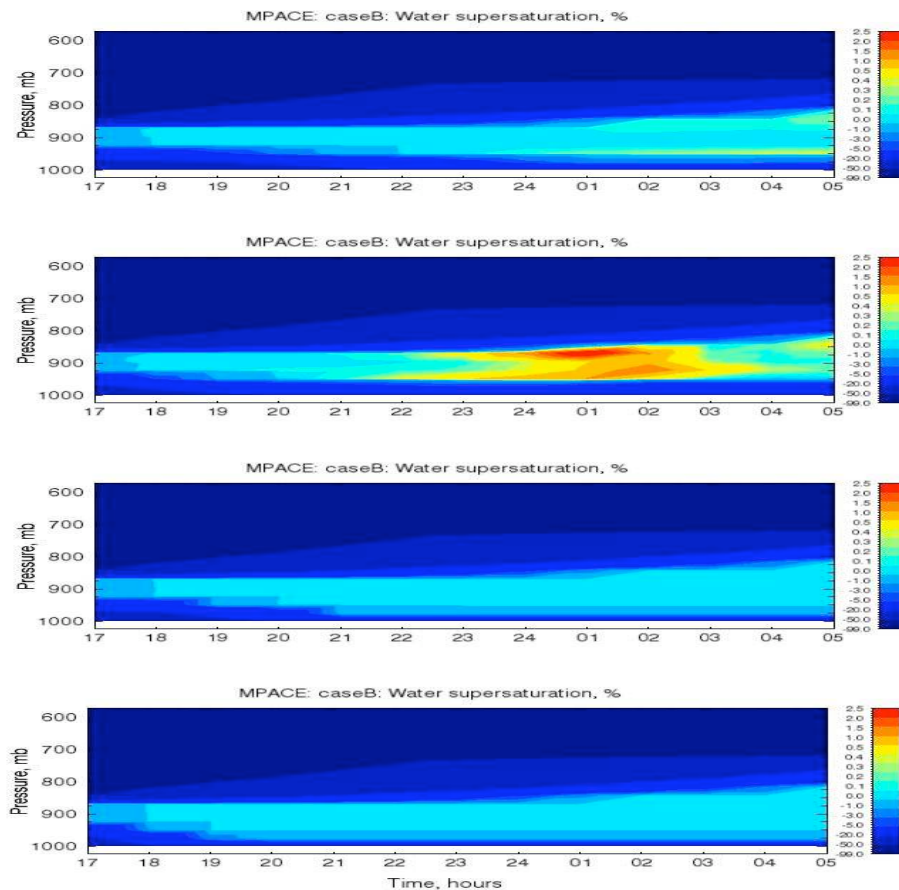


Fig. 3. Supersaturation w.r.t. water in W1, W2, W3, and W4 (top to bottom).

[Title Page](#)[Abstract](#)[Introduction](#)[Conclusions](#)[References](#)[Tables](#)[Figures](#)[◀](#)[▶](#)[◀](#)[▶](#)[Back](#)[Close](#)[Full Screen / Esc](#)[Printer-friendly Version](#)[Interactive Discussion](#)

Simulating
mixed-phase Arctic
stratus clouds

I. Sednev et al.

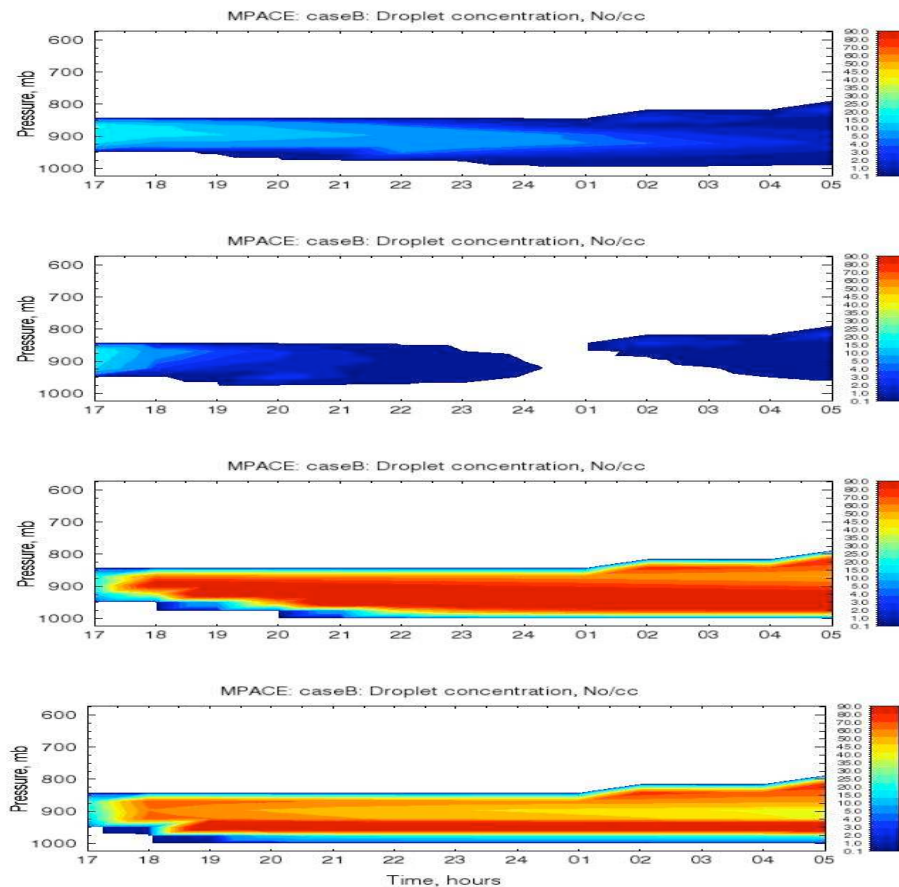


Fig. 4. Droplet concentration in W1, W2, W3, and W4 (top to bottom).

[Title Page](#)[Abstract](#)[Introduction](#)[Conclusions](#)[References](#)[Tables](#)[Figures](#)[◀](#)[▶](#)[◀](#)[▶](#)[Back](#)[Close](#)[Full Screen / Esc](#)[Printer-friendly Version](#)[Interactive Discussion](#)

Simulating
mixed-phase Arctic
stratus clouds

I. Sednev et al.

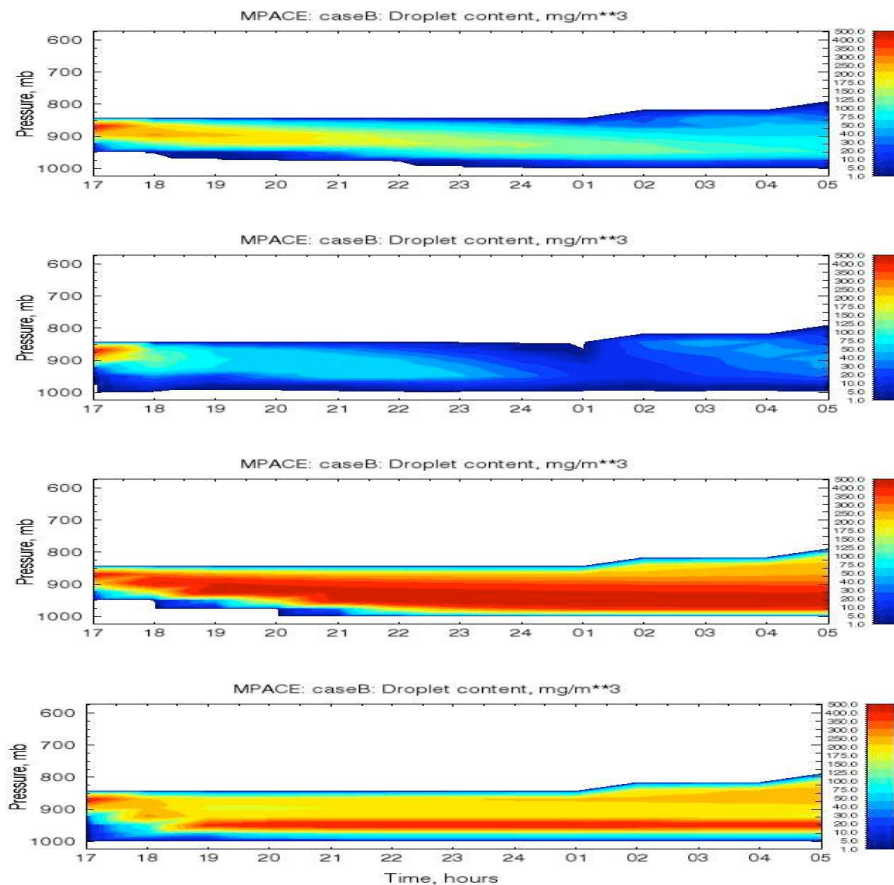


Fig. 5. Droplet content in W1, W2, W3, and W4 (top to bottom).

[Title Page](#)[Abstract](#)[Introduction](#)[Conclusions](#)[References](#)[Tables](#)[Figures](#)[⏪](#)[⏩](#)[◀](#)[▶](#)[Back](#)[Close](#)[Full Screen / Esc](#)[Printer-friendly Version](#)[Interactive Discussion](#)

Simulating mixed-phase Arctic stratus clouds

I. Sednev et al.

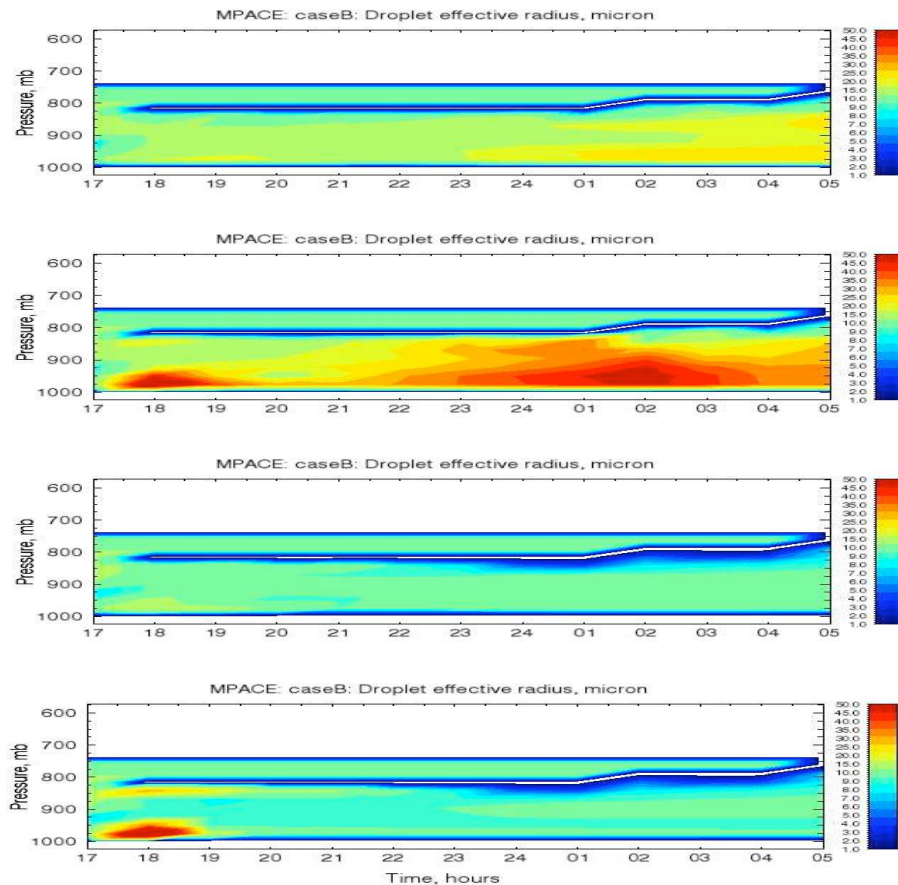


Fig. 6. Droplet effective radius in W1, W2, W3, and W4 (top to bottom).

[Title Page](#)[Abstract](#)[Introduction](#)[Conclusions](#)[References](#)[Tables](#)[Figures](#)[◀](#)[▶](#)[◀](#)[▶](#)[Back](#)[Close](#)[Full Screen / Esc](#)[Printer-friendly Version](#)[Interactive Discussion](#)

Simulating mixed-phase Arctic stratus clouds

I. Sednev et al.

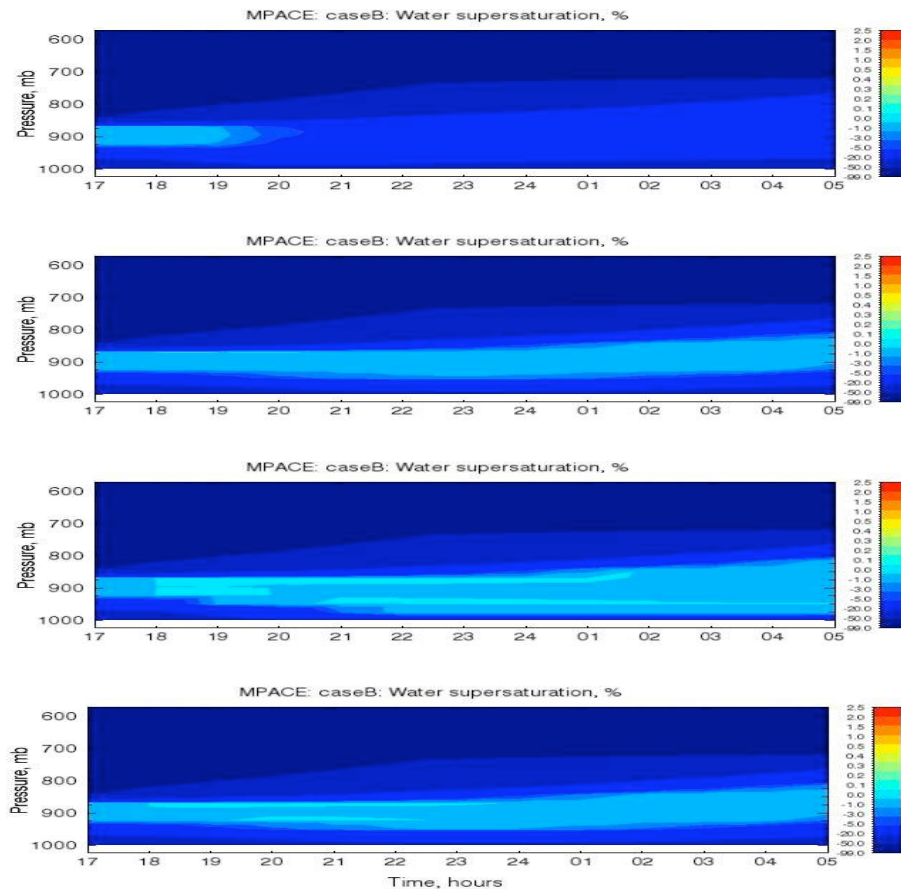


Fig. 7. Supersaturation w.r.t. water in I1, I2, I3, and I4 (top to bottom).

Title Page

Abstract

Introduction

Conclusions

References

Tables

Figures

◀

▶

◀

▶

Back

Close

Full Screen / Esc

Printer-friendly Version

Interactive Discussion



Simulating mixed-phase Arctic stratus clouds

I. Sednev et al.

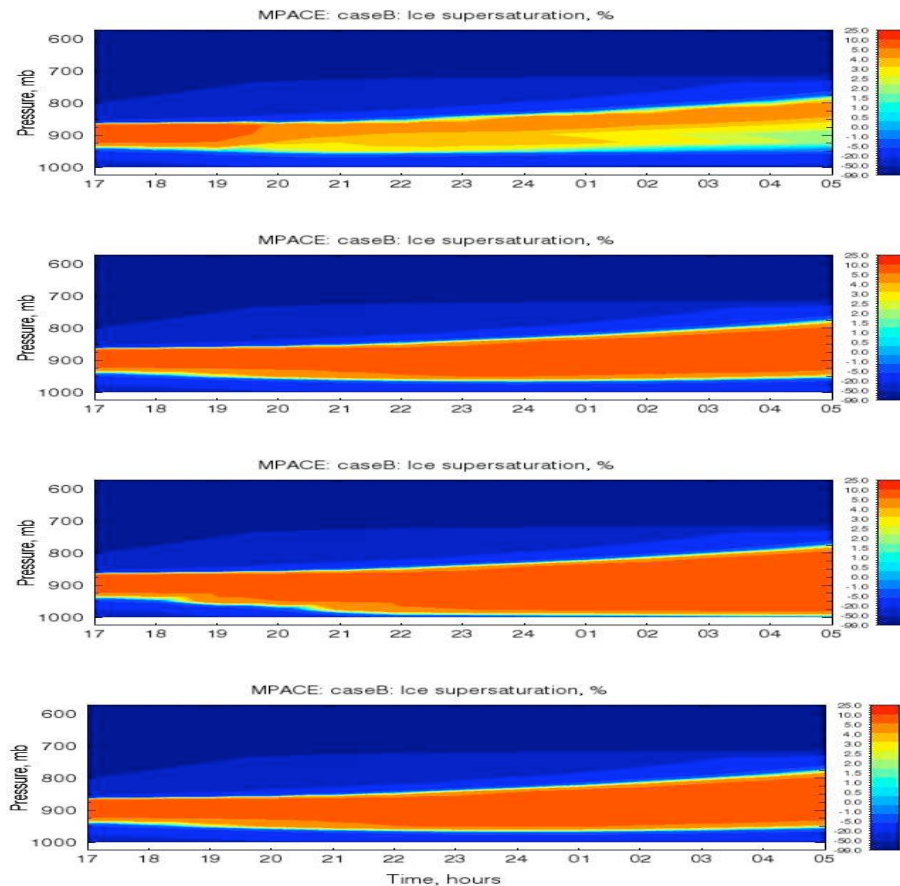


Fig. 8. Supersaturation w.r.t. ice in I1, I2, I3, and I4 (top to bottom).

Title Page

Abstract

Introduction

Conclusions

References

Tables

Figures

◀

▶

◀

▶

Back

Close

Full Screen / Esc

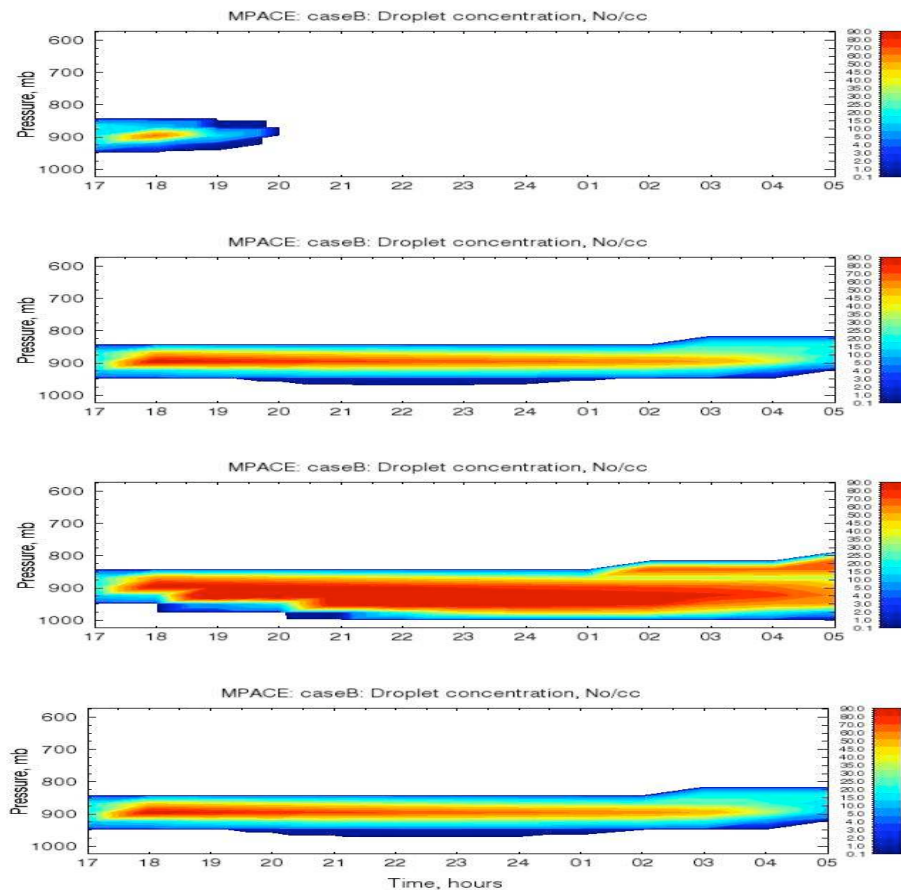
Printer-friendly Version

Interactive Discussion



**Simulating
mixed-phase Arctic
stratus clouds**

I. Sednev et al.

**Fig. 9.** Droplet concentration in I1, I2, I3, and I4 (top to bottom).[Title Page](#)[Abstract](#)[Introduction](#)[Conclusions](#)[References](#)[Tables](#)[Figures](#)[◀](#)[▶](#)[◀](#)[▶](#)[Back](#)[Close](#)[Full Screen / Esc](#)[Printer-friendly Version](#)[Interactive Discussion](#)

Simulating
mixed-phase Arctic
stratus clouds

I. Sednev et al.

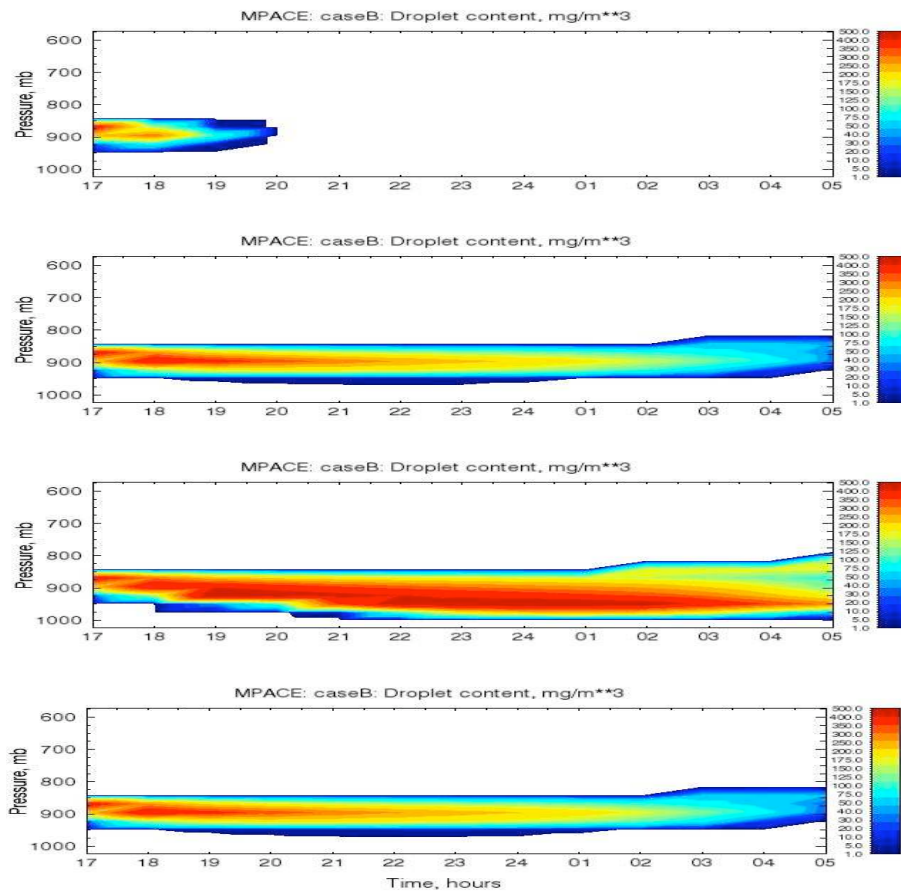
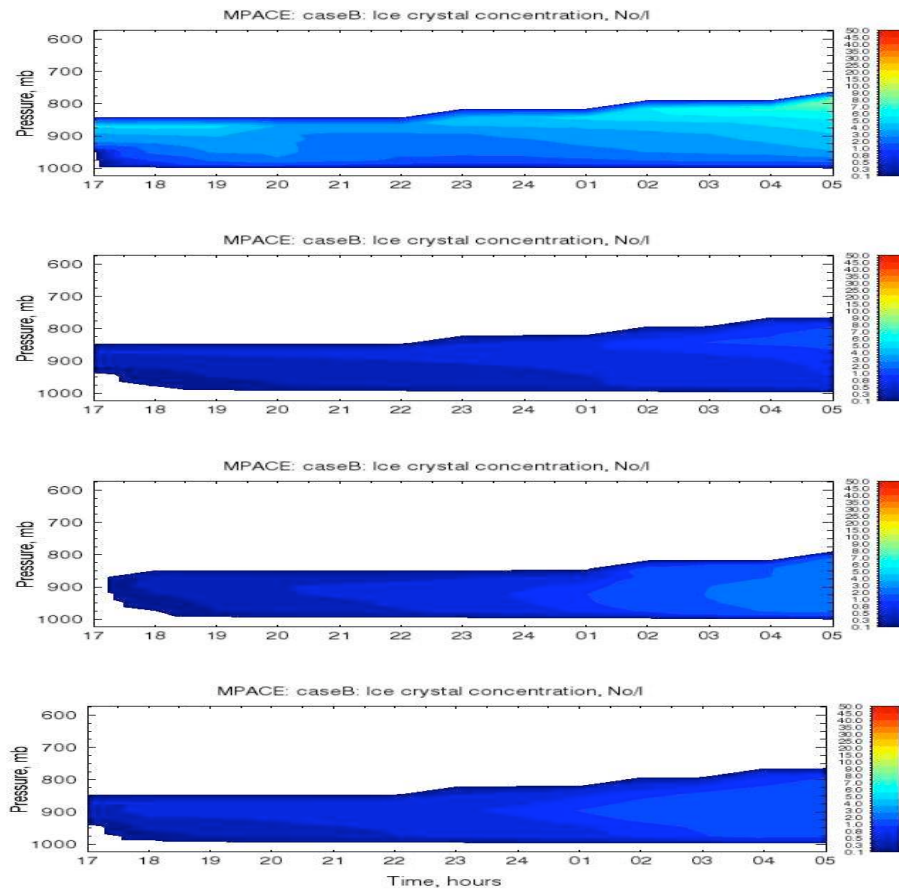


Fig. 10. Droplet content in I1, I2, I3, and I4 (top to bottom).

[Title Page](#)[Abstract](#)[Introduction](#)[Conclusions](#)[References](#)[Tables](#)[Figures](#)[◀](#)[▶](#)[◀](#)[▶](#)[Back](#)[Close](#)[Full Screen / Esc](#)[Printer-friendly Version](#)[Interactive Discussion](#)

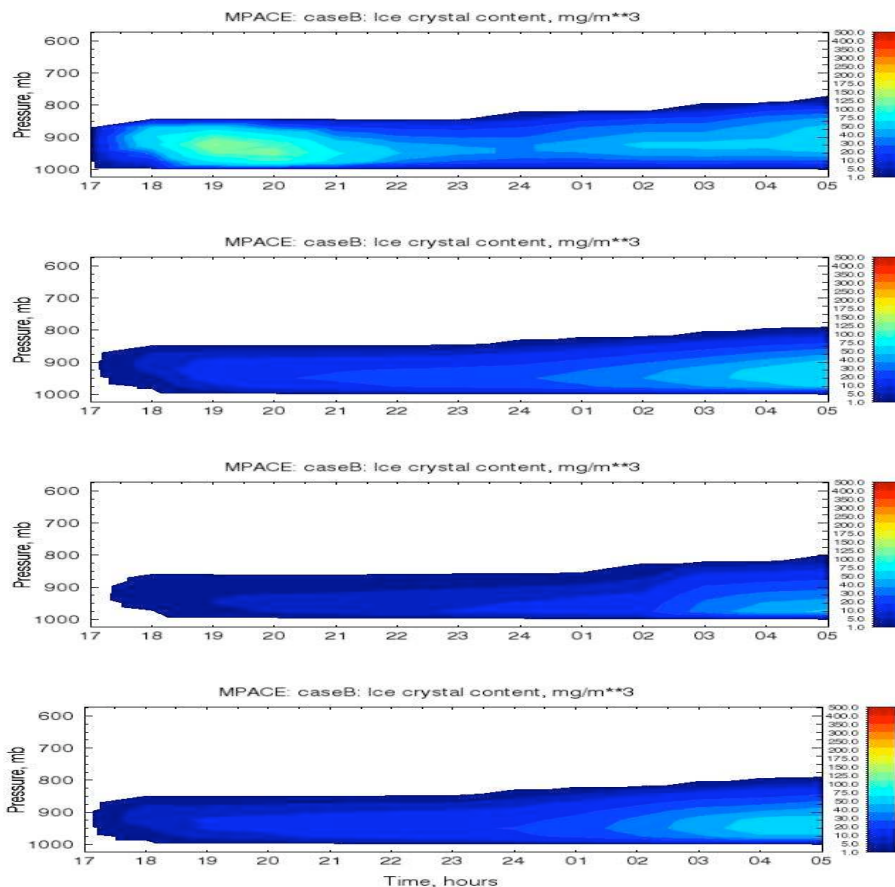
**Simulating
mixed-phase Arctic
stratus clouds**

I. Sednev et al.

**Fig. 11.** Ice crystal concentration in I1, I2, I3, and I4 (top to bottom).[Title Page](#)[Abstract](#)[Introduction](#)[Conclusions](#)[References](#)[Tables](#)[Figures](#)[◀](#)[▶](#)[◀](#)[▶](#)[Back](#)[Close](#)[Full Screen / Esc](#)[Printer-friendly Version](#)[Interactive Discussion](#)

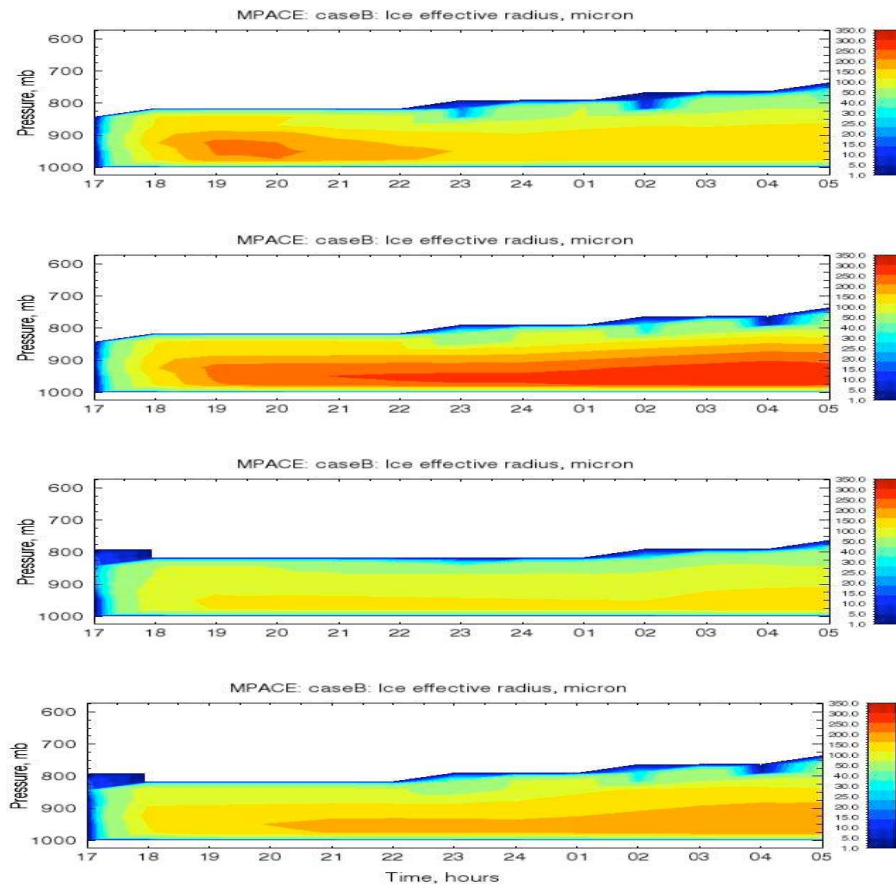
**Simulating
mixed-phase Arctic
stratus clouds**

I. Sednev et al.

**Fig. 12.** Ice crystal content in I1, I2, I3, and I4 (top to bottom).[Title Page](#)[Abstract](#)[Introduction](#)[Conclusions](#)[References](#)[Tables](#)[Figures](#)[⏪](#)[⏩](#)[◀](#)[▶](#)[Back](#)[Close](#)[Full Screen / Esc](#)[Printer-friendly Version](#)[Interactive Discussion](#)

**Simulating
mixed-phase Arctic
stratus clouds**

I. Sednev et al.

**Fig. 13.** Ice crystal effective radius in I1, I2, I3, and I4 (top to bottom).[Title Page](#)[Abstract](#)[Introduction](#)[Conclusions](#)[References](#)[Tables](#)[Figures](#)[◀](#)[▶](#)[◀](#)[▶](#)[Back](#)[Close](#)[Full Screen / Esc](#)[Printer-friendly Version](#)[Interactive Discussion](#)