



**HAL**  
open science

# Transpacific transport of ozone pollution and the effect of recent Asian emission increases on air quality in North America: an integrated analysis using satellite, aircraft, ozonesonde, and surface observations

L. Zhang, D. J. Jacob, K. F. Boersma, D. A. Jaffe, J. R. Olson, K. W. Bowman, J. R. Worden, A. M. Thompson, M. A. Avery, R. C. Cohen, et al.

## ► To cite this version:

L. Zhang, D. J. Jacob, K. F. Boersma, D. A. Jaffe, J. R. Olson, et al.. Transpacific transport of ozone pollution and the effect of recent Asian emission increases on air quality in North America: an integrated analysis using satellite, aircraft, ozonesonde, and surface observations. *Atmospheric Chemistry and Physics Discussions*, 2008, 8 (2), pp.8143-8191. hal-00304137

**HAL Id: hal-00304137**

**<https://hal.science/hal-00304137>**

Submitted on 18 Jun 2008

**HAL** is a multi-disciplinary open access archive for the deposit and dissemination of scientific research documents, whether they are published or not. The documents may come from teaching and research institutions in France or abroad, or from public or private research centers.

L'archive ouverte pluridisciplinaire **HAL**, est destinée au dépôt et à la diffusion de documents scientifiques de niveau recherche, publiés ou non, émanant des établissements d'enseignement et de recherche français ou étrangers, des laboratoires publics ou privés.

**Transpacific  
transport of ozone  
pollution**

L. Zhang

# Transpacific transport of ozone pollution and the effect of recent Asian emission increases on air quality in North America: an integrated analysis using satellite, aircraft, ozonesonde, and surface observations

L. Zhang<sup>1</sup>, D. J. Jacob<sup>1,2</sup>, K. F. Boersma<sup>2,\*</sup>, D. A. Jaffe<sup>3</sup>, J. R. Olson<sup>4</sup>, K. W. Bowman<sup>5</sup>, J. R. Worden<sup>5</sup>, A. M. Thompson<sup>6</sup>, M. A. Avery<sup>4</sup>, R. C. Cohen<sup>7</sup>, J. E. Dibb<sup>8</sup>, F. M. Flocke<sup>9</sup>, H. E. Fuelberg<sup>10</sup>, L. G. Huey<sup>11</sup>, W. W. McMillan<sup>12</sup>, H. B. Singh<sup>13</sup>, and A. J. Weinheimer<sup>14</sup>

<sup>1</sup>Dept. of Earth and Planetary Sciences, Harvard University, Cambridge, MA 02138, USA

<sup>2</sup>School of Engineering and Applied Sciences, Harvard Univ., Cambridge, MA 02138, USA

<sup>3</sup>University of Washington, 18115 Campus Way NE, Bothell, WA 98021, USA

<sup>4</sup>Atmospheric Sciences Division, Langley Research Center, NASA, Hampton, VA 23681, USA

<sup>5</sup>Jet Propulsion Laboratory, California Institute of Technology, 4800 Oak Grove Drive, Pasadena, CA 91109, USA

Title Page

Abstract

Introduction

Conclusions

References

Tables

Figures

◀

▶

◀

▶

Back

Close

Full Screen / Esc

Printer-friendly Version

Interactive Discussion



<sup>6</sup>The Pennsylvania State University, Department of Meteorology, 503 Walker Building, University Park, PA 16802-5013 USA

<sup>7</sup>Department of Chemistry, University of California, Berkeley, CA 94720, USA

<sup>8</sup>University of New Hampshire, Climate Change Research Center, 39 College Road, Durham, NH 03824, USA

<sup>9</sup>Earth Observing Lab., National Center for Atmospheric Research, Boulder, CO 80307, USA

<sup>10</sup>Department of Meteorology, Florida State University, Tallahassee, FL 32306-4520, USA

<sup>11</sup>School of Earth and Atmospheric Sciences, Georgia Institute of Technology, Atlanta, GA 30332-0340, USA

<sup>12</sup>Department of Physics, University of Maryland Baltimore County, 1000 Hilltop Circle, Baltimore, MD 21250, USA

<sup>13</sup>NASA Ames Research Center, MS-245-5, Moffett Field, CA 94035, USA

<sup>14</sup>National Center for Atmospheric Res., 1850 Table Mesa Drive, Boulder, CO 80305, USA

\*now at: KNMI, PO Box 201, 3730 AE De Bilt, The Netherlands

Received: 26 March 2008 – Accepted: 31 March 2008 – Published: 24 April 2008

Correspondence to: L. Zhang (linzhang@fas.harvard.edu)

Published by Copernicus Publications on behalf of the European Geosciences Union.

ACPD

8, 8143–8191, 2008

---

**Transpacific  
transport of ozone  
pollution**

**L. Zhang**

---

Title Page

Abstract

Introduction

Conclusions

References

Tables

Figures

◀

▶

◀

▶

Back

Close

Full Screen / Esc

Printer-friendly Version

Interactive Discussion



## Abstract

We use an ensemble of aircraft, satellite, sonde, and surface observations for April–May 2006 (NASA/INTEX-B aircraft campaign) to better understand the mechanisms for transpacific ozone pollution and its implications for North American air quality. The observations are interpreted with a global 3-D chemical transport model (GEOS-Chem). OMI NO<sub>2</sub> satellite observations constrain Asian anthropogenic NO<sub>x</sub> emissions and indicate a factor of 2 increase from 2000 to 2006 in China. Satellite observations of CO from AIRS and TES indicate two major events of Asian transpacific pollution during INTEX-B. Correlation between TES CO and ozone observations shows evidence for transpacific ozone pollution. The semi-permanent Pacific High and Aleutian Low cause splitting of transpacific pollution plumes over the Northeast Pacific. The northern branch circulates around the Aleutian Low and has little impact on North America. The southern branch circulates around the Pacific High and impacts western North America. Both aircraft measurements and model results show sustained ozone production driven by peroxyacetylnitrate (PAN) decomposition in the southern branch, roughly doubling the transpacific influence from ozone produced in the Asian boundary layer. Model simulation of ozone observations at Mt. Bachelor Observatory in Oregon (2.7 km altitude) indicates a mean Asian ozone pollution contribution of 9±3 ppbv to the mean observed concentration of 54 ppbv, reflecting mostly an enhancement in background ozone rather than episodic Asian plumes. Asian pollution enhanced surface ozone concentrations by 5–7 ppbv over western North America in spring 2006. The 2000–2006 rise in Asian anthropogenic emissions increased the influence by 1–2 ppbv.

## 1 Introduction

Rapid industrial development in eastern Asia and specifically in China has resulted in unprecedented growth in NO<sub>x</sub> emissions with implications for both regional and global tropospheric ozone (Wild and Akimoto, 2001). Efforts to improve US air quality through

## Transpacific transport of ozone pollution

L. Zhang

Title Page

Abstract

Introduction

Conclusions

References

Tables

Figures

◀

▶

◀

▶

Back

Close

Full Screen / Esc

Printer-friendly Version

Interactive Discussion



**Transpacific  
transport of ozone  
pollution****L. Zhang**

Title Page

Abstract

Introduction

Conclusions

References

Tables

Figures

◀

▶

◀

▶

Back

Close

Full Screen / Esc

Printer-friendly Version

Interactive Discussion

domestic emission controls could be partly offset by Asian industrialization and the associated transpacific transport of pollution (Jacob et al., 1999; Fiore et al., 2002). Better understanding the impact of rising Asian  $\text{NO}_x$  emissions on transpacific ozone pollution and surface ozone air quality in the United States is therefore of great interest. We address this issue here through a global 3-D model analysis of observations from the NASA Intercontinental Chemical Transport Experiment – Phase B (INTEX-B) aircraft campaign, conducted in spring 2006 over the Northeast Pacific. We integrate into our analysis concurrent measurements from ground sites, sondes, and satellites.

Ozone is produced in the troposphere by the photochemical oxidation of CO and volatile organic compounds (VOCs) in the presence of nitrogen oxides ( $\text{NO}_x \equiv \text{NO} + \text{NO}_2$ ). On a global scale, the photochemical production of ozone dominates the stratospheric influx (Prather and Ehhalt, 2001; Sudo and Akimoto, 2007), and is limited mostly by the supply of  $\text{NO}_x$  and methane (Wang et al., 1998b). Anthropogenic sources of  $\text{NO}_x$  from combustion combined with the global rise in methane have probably doubled the tropospheric ozone burden in the northern hemisphere over the past century (Prather and Ehhalt, 2001). Ozone has a lifetime of days in the continental boundary layer but weeks in the free troposphere (Jacob et al., 1996; Thompson et al., 1996; Wang et al., 1998b; Fiore et al., 2002), and thus can affect continents downwind.

The dependence of ozone production on  $\text{NO}_x$  is highly nonlinear; the ozone production efficiency (OPE) per unit  $\text{NO}_x$  consumed increases rapidly as the  $\text{NO}_x$  concentration decreases (Liu et al., 1987). Ozone production within the continental boundary layer is relatively inefficient because of the high- $\text{NO}_x$  conditions. A small fraction of emitted  $\text{NO}_x$  exported to the free troposphere by frontal lifting, deep convection, or boundary layer venting can lead to disproportionately large ozone production in the free troposphere over the continent and downwind (Jacob et al., 1993; Thompson et al., 1994). The peroxyacetyl nitrate (PAN) reservoir for  $\text{NO}_x$  can be vented from the boundary layer and transported on a global scale at cold temperatures, eventually decomposing to release  $\text{NO}_x$  in the remote troposphere as air masses subside and producing ozone with very high efficiency. Previous studies using aircraft measure-

ments from the PHOBEA, TRACE-P, and ITCT-2K2 campaigns (Kotchenruther et al., 2001; Heald et al., 2003; Hudman et al., 2004) found that PAN decomposition may represent a dominant component of the ozone enhancement in transpacific Asian pollution plumes. The INTEX-B campaign offers far more geographical coverage over the Northeast Pacific and enables a better understanding of the mechanisms of ozone production in transpacific plumes.

Asian pollution is typically exported to the Pacific via frontal lifting in warm conveyor belts (WCBs), convection, and orographic lifting (Liu et al., 2003; Liang et al., 2004; Kiley et al., 2006; Dickerson et al., 2007). It can then be transported across the Pacific in 5–10 days in plumes (Yienger et al., 2000; Jaffe et al., 2001; Stohl et al., 2002), though mean transport times are of the order of 2–3 weeks (Liu and Mauzerall, 2005). The transport is most rapid and frequent in spring due to active cyclonic activity and strong westerly winds (Forster et al., 2004; Liang et al., 2004). While Asian plumes with correlated CO and ozone are often observed in the free troposphere and at mountain sites over the western United States (Price et al., 2004; Jaffe et al., 2005; Weiss-Penzias et al., 2007), no such plumes are observed at the surface for ozone (Goldstein et al., 2004), presumably because of dilution during entrainment into the boundary layer (Hudman et al., 2004). Asian ozone pollution in U.S. surface air thus mostly reflects an increase in background concentrations (Fiore et al., 2003). Background ozone levels in air entering western North America have increased approximately 10 ppbv between 1984 and 2002 (Jaffe et al., 2003) and ozone concentrations across the western United States show a significant increase with a mean trend of  $0.26 \text{ ppbv y}^{-1}$  (Jaffe and Ray, 2007). The causes for these increases are not clear but rising Asian emissions may be a contributing source.

A unique feature of the INTEX-B campaign was the availability of extensive satellite observations of tropospheric ozone,  $\text{NO}_2$ , and CO to complement the aircraft observations. Satellites have been providing a growing resource to quantify emissions of ozone precursors (Martin et al., 2006) and to map the transpacific transport of pollutants (Heald et al., 2003, 2006). They greatly expand the temporal and spatial scale of

## Transpacific transport of ozone pollution

L. Zhang

Title Page

Abstract

Introduction

Conclusions

References

Tables

Figures

◀

▶

◀

▶

Back

Close

Full Screen / Esc

Printer-friendly Version

Interactive Discussion



**Transpacific  
transport of ozone  
pollution****L. Zhang**

Title Page

Abstract

Introduction

Conclusions

References

Tables

Figures

◀

▶

◀

▶

Back

Close

Full Screen / Esc

Printer-friendly Version

Interactive Discussion



in situ measurements but are limited in precision, vertical resolution, and the number of species observed. Aircraft vertical profiles during INTEX-B provided validation data for the OMI (NO<sub>2</sub>), AIRS (CO), and TES (ozone, CO) satellite sensors (Boersma et al., 2008; Luo et al., 2007b; Richards et al., 2008). Here we use these satellite observations to constrain Asian NO<sub>x</sub> emissions (NO<sub>2</sub> from OMI), track transpacific plumes (CO from AIRS as a long-lived pollution tracer), and observe ozone production in transpacific Asian plumes (ozone and CO from TES). We examine the consistency between the satellite and aircraft information and apply the aircraft data to further analysis of plume chemistry. We also use sonde data from INTEX Ozonesonde Network Study (IONS) (Thompson et al., 2008) to test model results, and use ground-based measurements at Mount Bachelor Observatory in central Oregon (Jaffe et al., 2005; Reidmiller et al., 2008<sup>1</sup>) to link Asian pollution influences observed by satellite and aircraft in the free troposphere to North American surface air quality.

## 2 Observations and model

### 2.1 In-situ measurements

The NASA INTEX-B aircraft mission took place from 17 April to 15 May 2006 over the Northeast Pacific and the west coast of North America (Singh et al., 2008<sup>2</sup>). It used the NASA DC-8 (ceiling 12 km) as its primary platform operating out of Honolulu and Anchorage, complemented with the NSF/NCAR C-130 (ceiling 7 km) operating out of Seattle. Figure 1 shows the flights tracks of the DC-8 and C-130 aircraft. These

<sup>1</sup>Reidmiller, D. R., Jaffe, D. A., Strode, S., et al.: Interannual variability of CO in the free troposphere at the Mt. Bachelor Observatory: INTEX-B results in the context of 2004–2007, Atmos. Chem. Phys. Discuss., manuscript in preparation, 2008.

<sup>2</sup>Singh, H. B., Brune, W. H., Crawford, J. H., Jacob, D. J., Russell, P. B., et al.: An Overview of the INTEX-B Campaign: Transport and Transformation of Pollutants over the Pacific and the Gulf of Mexico, Atmos. Chem. Phys. Discuss., manuscript in preparation, 2008.

---

**Transpacific  
transport of ozone  
pollution****L. Zhang**

---

Title Page

Abstract

Introduction

Conclusions

References

Tables

Figures

◀

▶

◀

▶

Back

Close

Full Screen / Esc

Printer-friendly Version

Interactive Discussion

included extensive vertical profiling on all flights. The DC-8 conducted 10 science flights of about 9-h duration each, with large latitudinal coverage over the Northeast Pacific. The C-130 conducted 12 science flights of about 8-h duration each off and over the west coast. Quasi-Lagrangian sampling studies were performed between the DC-8 and the C-130 to track the chemical evolution of Asian pollution plumes (Latto and Fuelberg, 2007).

Details of the chemical payload on both aircraft are given by Singh et al., 2008<sup>2</sup>. We principally make use here of the 1-minute average measurements of ozone, CO, NO, NO<sub>2</sub>, PAN, OH, and HO<sub>2</sub>. Intercomparisons between the two aircraft show excellent agreement for ozone, CO, and NO<sub>x</sub>, but for PAN the correlation is poor and C-130 measurements are 23% higher than DC-8 on average as discussed in Chen et al. (2007).

Additional in situ data for the INTEX-B period analyzed in our study include ozonesonde observations at Trinidad Head (California) and Richland (Washington) made during the IONS-06 collaborative field campaign (Thompson et al., 2008; <http://croc.gsfc.nasa.gov/intexb/ions06.html>), and surface measurements at Mount Bachelor Observatory (MBO, 44.0° N, 121.7° W, 2.7 km altitude in Oregon) (Wolfe et al., 2007; Reidmiller et al.).

## 2.2 Satellites

We use satellite observations from OMI and TES aboard Aura and AIRS aboard Aqua. Aura was launched in July 2004 into a polar, sun-synchronous orbit with ascending equator crossing around 1345 local time. The Ozone Monitoring Instrument (OMI) is a nadir-scanning instrument which measures backscattered solar radiation over the 270–500 nm wavelength range with a spectral resolution of 0.42–0.63 nm (Levelt et al., 2006). It has a spatial resolution of 13×24 km<sup>2</sup> at nadir and daily global coverage. We use here near-real time (NRT) tropospheric NO<sub>2</sub> columns retrieved by KNMI/NASA (Boersma et al., 2007). This product was successfully validated with DC-8 NO<sub>2</sub> vertical profiles (Boersma et al., 2008).



---

**Transpacific  
transport of ozone  
pollution****L. Zhang**

---

[Title Page](#)[Abstract](#)[Introduction](#)[Conclusions](#)[References](#)[Tables](#)[Figures](#)[◀](#)[▶](#)[◀](#)[▶](#)[Back](#)[Close](#)[Full Screen / Esc](#)[Printer-friendly Version](#)[Interactive Discussion](#)

The Tropospheric Emission Spectrometer (TES) is a Fourier transform IR emission spectrometer with high spectral resolution ( $0.1\text{ cm}^{-1}$  apodized) and a wide spectral range ( $650\text{--}3050\text{ cm}^{-1}$ ), enabling retrieval of both tropospheric ozone and CO in the nadir based on optimal estimation techniques (Beer et al., 2006; Bowman et al., 2006).

5 Joint retrieval of ozone and CO enables TES to diagnose ozone pollution influences through  $\text{O}_3\text{-CO}$  correlations (Zhang et al., 2006). During INTEX-B, TES alternated daily between “global survey” and “step-and-stare” observational modes. The standard products (“global surveys”) consist of 16 daily orbits across the North Pacific with retrievals spaced  $1.6^\circ$  along the orbit track. The “step-and-stare” observations have  
10 denser nadir coverage along the orbit track over the North Pacific. Vertical profiles retrieved from TES provide 1–2 degrees of freedom for signal (DOFS) for ozone in the troposphere corresponding to about 6 km vertical resolution, and about 1 DOFS for CO weighted towards the middle troposphere (Worden et al., 2004). We use V002 of TES data. Validation with ozonesondes and INTEX-B aircraft data shows that TES ozone  
15 profiles are biased high by 3–10 ppbv (Nassar et al., 2008; Richards et al., 2008). TES CO measurements are consistent with those from MOPITT (Luo et al., 2007a) and within  $\pm 15\%$  of the INTEX-B aircraft data (Luo et al., 2007b). We filter out retrievals with poor sensitivity (diagonal term of the averaging kernel matrix at  $681\text{ hPa} < 0.01$ ). To ensure that our conclusions are not affected by the variable a priori used to regularize  
20 the TES retrievals, we reprocess the TES profiles using a fixed a priori following Zhang et al. (2006).

The Atmospheric Infrared Sounder (AIRS) was launched on the NASA Aqua satellite in May 2002. It is a cross-track scanning grating spectrometer covering the  $3.7$  to  $16\ \mu\text{m}$  spectral range with 2378 channels (Aumann et al., 2003). AIRS has a spatial resolution  
25 of  $45\text{ km}$  at nadir and a  $1650\text{ km}$  cross-track swath, enabling daily global coverage. CO retrievals are obtained at  $4.7\ \mu\text{m}$  including for partly cloudy scenes (McMillan et al., 2005). We use version 4.2 of AIRS CO retrievals (McMillan et al., 2008). AIRS shows a positive bias of 15–20 ppbv relative to MOPITT over the oceans (Warner et al., 2007). Here we use AIRS observations of CO column qualitatively due to lack of well-defined

averaging kernels in version 4.2.

## 2.3 Model description

We use the GEOS-Chem global 3-D model of tropospheric chemistry (v7-04-09; <http://www.as.harvard.edu/chemistry/trop/geos/>) driven by GEOS-4 assimilated meteorological observations from the NASA Global Modeling and Assimilation Office (GMAO). The model is applied to a global simulation of ozone-NO<sub>x</sub>-VOC-aerosol chemistry. General descriptions of GEOS-Chem are given by Bey et al. (2001) and Park et al. (2004), and previous applications to transpacific ozone chemistry include studies by Fiore et al. (2002), Jaeglé et al. (2003), Weiss-Penzias et al. (2004), Bertschi et al. (2004), Goldstein et al. (2004), Hudman et al. (2004), and Liang et al. (2007).

Meteorological fields in the GEOS-4 data have a temporal resolution of 6 h (3 h for surface variables and mixing depths) and a horizontal resolution of 1° latitude by 1.25° longitude, with 55 levels in the vertical. We degrade the horizontal resolution to 2° latitude by 2.5° longitude for input to GEOS-Chem. The simulations are conducted for April–May 2006 at 2° × 2.5° resolution. They are initialized on 1 April 2006 with GEOS-Chem fields generated by an 8-month spin-up simulation with 4° × 5° resolution.

Zhang et al.<sup>3</sup>([http://www.cgrer.uiowa.edu/EMISSION\\_DATA\\_new/index\\_16.html](http://www.cgrer.uiowa.edu/EMISSION_DATA_new/index_16.html)) compiled a detailed anthropogenic emission inventory for Asia (8° N–50° N, 80° E–150° E) for the spring 2006 period of INTEX-B (hereafter referred to as S2006). We use their emission estimates except for NO<sub>x</sub> which we derive instead from OMI NO<sub>2</sub> data as a better estimate (Sect. 3). For anthropogenic emissions in the United States we use the National Emission Inventory for 1999 (NEI 99) from the US Environmental Protection Agency (EPA) (<http://www.epa.gov/ttn/chief/net/>). For the rest of the world we use anthropogenic emissions from the Global Emission Inventory Activity (GEIA), scaled to 1998 on the basis of national energy statistics as described by Bey et

<sup>3</sup>Zhang, Q., Streets, D. G., He, K., et al., A new inventory of anthropogenic emissions in Asia for the year 2005/2006, Atmos. Chem. Phys. Discuss., manuscript in preparation, 2008.

## Transpacific transport of ozone pollution

L. Zhang

Title Page

Abstract

Introduction

Conclusions

References

Tables

Figures

◀

▶

◀

▶

Back

Close

Full Screen / Esc

Printer-friendly Version

Interactive Discussion



al. (2001).

Streets et al. (2003) previously reported an anthropogenic emission inventory for Asia in 2000 (hereafter referred to as S2000), and we will use that inventory in a sensitivity simulation to assess the impact of rising Asian emissions from 2000 to 2006. For the same Asian region, the S2006 inventory is 41% higher for CO, 45% higher for non-methane volatile organic compound (NMVOCs), and 65% higher for NO<sub>x</sub>. Our NO<sub>x</sub> source constrained by the OMI NO<sub>2</sub> observations is 2 times higher than S2000. Some of the change in the CO inventory in S2006 relative to S2000 reflects an underestimate in the original inventory (Streets et al., 2006), in addition to emission growth. The increase in NMVOCs reflects emission growth and is consistent with Ohara et al. (2007). The increase in NO<sub>x</sub> also mainly reflects emission growth, as will be discussed in Sect. 3.

Biomass burning emissions are from a monthly climatological inventory (Duncan et al., 2003). Fire emissions over Southeast Asia in 2006 were not unusual compared with previous years (van der Werf et al., 2006; <http://ess1.ess.uci.edu/~jranders>). Soil NO<sub>x</sub> emissions are computed in GEOS-Chem using a modified version of the algorithm proposed by Yienger and Levy (1995) with the canopy reduction factors described by Wang et al. (1998a). Emissions of NO<sub>x</sub> from lightning are linked to deep convection following the parameterization of Price and Rind (1992) with vertical profiles taken from Pickering et al. (1998). Following the suggestions by Martin et al. (2006) and Hudman et al. (2007) and evidence from observations (Huntrieser et al., 2006), we use a NO<sub>x</sub> yield per flash of 125 moles in the tropics but 500 moles at northern mid-latitudes (north of 30° N). The resulting lightning source is 6 Tg N y<sup>-1</sup> globally including 1.6 Tg N y<sup>-1</sup> north of 30° N. Transport of ozone from the stratosphere is simulated using the “Synoz” boundary condition of McLinden et al. (2000), which imposes a global cross-tropopause ozone flux of 495 Tg ozone y<sup>-1</sup> transported downward by the model.

We present results from three full-chemistry simulations: (1) the standard simulation for 2006 as described above; (2) a sensitivity simulation without Asian (8°–50° N, 80°–150° E) anthropogenic emissions (fossil fuel+biofuel), which allows us to derive Asian

**Transpacific  
transport of ozone  
pollution**

**L. Zhang**

Title Page

Abstract

Introduction

Conclusions

References

Tables

Figures

◀

▶

◀

▶

Back

Close

Full Screen / Esc

Printer-friendly Version

Interactive Discussion



**Transpacific  
transport of ozone  
pollution****L. Zhang**

pollution enhancements in the standard simulation by difference; and (3) a sensitivity simulation for 2000 using Asian emissions from Streets et al. (2003) to derive the effect of 2000–2006 regional growth in emissions. We also conduct single-tracer simulations of odd oxygen ( $O_x \equiv O_3 + NO_2 + 2NO_3 + 3N_2O_5 + HNO_3 + HNO_4 + \text{peroxyacylnitrates}$ ), using archived 3-D fields of daily production rates and loss frequencies from the above simulations. This ozone tracer technique has been applied in a number of model studies to track the transport and fate of ozone produced in different regions (Wang et al., 1998b; Li et al., 2002; Sudo and Akimoto, 2007). We use it here to assess the relative contributions to transpacific ozone pollution from ozone produced in the Asian boundary layer versus formed downwind of Asia following  $NO_x$  and PAN export.

### 3 Constraints on Asian anthropogenic $NO_x$ emissions

The bottom-up combustion inventories for large developing countries such as China are subject to errors in available energy statistics and emission factors (Streets et al., 2003). We use here OMI tropospheric  $NO_2$  columns to provide top-down constraints on surface  $NO_x$  emissions for April–May 2006 over eastern Asia ( $20\text{--}50^\circ\text{N}$ ,  $100\text{--}150^\circ\text{E}$ ) including East China, Japan, and Korea. Following Martin et al. (2003), we determine local top-down surface  $NO_x$  emissions from the OMI  $NO_2$  columns by applying the GEOS-Chem relationship between  $NO_2$  columns and local emissions derived from the bottom-up inventory and sampled close to the satellite overpass time. We adopt the improvement from Wang et al. (2007) by accounting for contributions from external and non-surface sources, including in particular lightning and biomass burning in Southeast Asia. Contributions from these sources to tropospheric  $NO_2$  columns over eastern Asia were identified by GEOS-Chem sensitivity simulations with anthropogenic emissions over eastern Asia shut off. They typically represent 10–20%.

Figure 2 shows the  $NO_2$  tropospheric columns observed by OMI (left panel) vs. simulated by GEOS-Chem using S2000 anthropogenic  $NO_x$  emissions from Streets et al. (2003) (central panel) at the satellite overpass time. The model is 40% too low. We

Title Page

Abstract

Introduction

Conclusions

References

Tables

Figures

◀

▶

◀

▶

Back

Close

Full Screen / Esc

Printer-friendly Version

Interactive Discussion



can match the OMI data by doubling the S2000 anthropogenic NO<sub>x</sub> emissions over eastern Asia, as shown in the right panel. This yields a high spatial correlation with OMI observations ( $r=0.92$ ,  $n=209$  on the  $2^\circ \times 2.5^\circ$  grid) as well as negligible bias (slope of 0.94 for the reduced-major-axis regression line). Walker et al.<sup>4</sup> obtained a similar constraint on Asian NO<sub>x</sub> emissions using SCIAMACHY satellite NO<sub>2</sub> data.

Our factor of 2 correction to the S2000 inventory likely reflects actual 2000–2006 emission growth in China and underestimation of bottom-up estimates for Japan and Korea. The S2006 bottom-up inventory (Zhang et al., in preparation) for the INTEX-B period shows a 98% growth of NO<sub>x</sub> anthropogenic emissions from China relative to S2000, in close agreement with our results. Wang et al. (2007) previously found the S2000 inventory to be 15% lower than contemporary top-down constraints from the GOME NO<sub>2</sub> satellite instrument. It thus appears that Chinese anthropogenic NO<sub>x</sub> emissions have indeed doubled from 2000 to 2006. Previous trend analyses of Chinese anthropogenic NO<sub>x</sub> emissions for the 1996–2004 period indicated an accelerating growth rate, with total growth for that period of 61% in the bottom-up inventory (Zhang et al., 2007) and 95% from satellite data (van der A et al., 2006).

The top-down constraints from OMI also imply factor of 2 increases in Japan and South Korean emissions relative to the S2000 inventory. However, S2006 report no significant 2000–2006 emission changes in these regions. Bottom-up and top-down analyses for earlier periods also showed little trend (Richter et al., 2005; Ohara et al., 2007). The correction to the S2000 inventory needed to match the OMI data in Fig. 2 thus appears to reflect an underestimate in the inventory rather than an actual 2000–2006 emission trend. Jaeglé et al. (2005) and Wang et al. (2007) previously indicated a 30%–50% underestimate in that inventory relative to GOME NO<sub>2</sub> observations over Japan.

In what follows, we will interpret the doubling of anthropogenic NO<sub>x</sub> emissions in eastern Asia relative to S2000 as representing the actual 2000–2006 regional growth

<sup>4</sup>Walker, T. W., Martin, R. V., van Donkelaar, A., et al.: Trans-Pacific transport of reactive nitrogen and ozone during spring, manuscript in preparation, 2008.

**Transpacific  
transport of ozone  
pollution**

**L. Zhang**

Title Page

Abstract

Introduction

Conclusions

References

Tables

Figures

◀

▶

◀

▶

Back

Close

Full Screen / Esc

Printer-friendly Version

Interactive Discussion



rate in emissions. This interpretation overestimates the actual growth only slightly considering that Chinese anthropogenic  $\text{NO}_x$  emissions for 2006 ( $6.2 \text{ Tg N y}^{-1}$ ) dominate the total in the region ( $7.5 \text{ Tg N y}^{-1}$  in S2006).

#### 4 Mean vertical profiles

We compare in Fig. 3 the observed and simulated mean vertical distributions of  $\text{CO}$ ,  $\text{NO}_x$ , PAN, and ozone concentrations for the ensemble of DC-8 and C-130 flights in Fig. 1. Model results are sampled along the flight tracks at the time of flights. Observations are gridded to model resolution. The comparison excludes urban plumes observed during take-off and landing as diagnosed by  $\text{NO}_2 > 500 \text{ pptv}$  and altitude  $< 3 \text{ km}$ ; biomass burning plumes as diagnosed by  $\text{HCN} > 500 \text{ pptv}$  or  $\text{CH}_3\text{CN} > 225 \text{ pptv}$ ; and stratospheric air as diagnosed by  $\text{O}_3/\text{CO} > 1.25 \text{ mol mol}^{-1}$ . These filters exclude 1%, 4% (urban plumes); 5%, 4% (biomass burning plumes); and 7%, 0% (stratospheric air) of the data for the DC-8 and C-130, respectively.

$\text{CO}$  profiles show little mean vertical structure. Modeled  $\text{CO}$  is 15% lower than observations, likely because of an  $\text{OH}$  overestimate in the model. Figure 4 shows the mean simulated vs. observed vertical distributions of  $\text{OH}$ , and  $\text{HO}_2$  concentrations. The model is too high for  $\text{OH}$  by 27% on average in the DC-8 data and by a comparable factor in the C-130 data. In contrast there is no significant bias for  $\text{HO}_2$ . Ren et al. (2007) found that the  $\text{OH}$  and  $\text{HO}_2$  observations from the DC-8 aircraft are within 15% of calculations from the NASA Langley photochemical box model (Olson et al., 2006) constrained with the ensemble of concurrent aircraft observations. To investigate this discrepancy between the GEOS-Chem and Langley model results, we conducted a test where we constrained the NASA Langley box model with GEOS-Chem output rather than observations from the DC-8 aircraft. This closely reproduced the  $\text{OH}$  and  $\text{HO}_2$  concentrations simulated by GEOS-Chem, indicating that differences in chemical mechanisms are not responsible for the discrepancy. It appears instead that the discrepancy is mostly caused by an overestimate of water vapor in the GEOS-4 data set

Title Page

Abstract

Introduction

Conclusions

References

Tables

Figures

◀

▶

◀

▶

Back

Close

Full Screen / Esc

Printer-friendly Version

Interactive Discussion



and upper tropospheric NO concentrations in GEOS-Chem relative to the observations.

The GEOS-Chem model overestimates NO measurements from DC-8 by up to a factor of 2 in the upper troposphere (above 6 km). The overestimation is not apparent in the comparisons with observations for total NO<sub>x</sub>, which show no significant model bias (Fig. 3). This is because of compensating underestimate of NO<sub>2</sub>. The NO/NO<sub>2</sub> ratios simulated in GEOS-Chem are in close agreement with the NASA Langley photochemical box model but higher than observed, suggesting an unidentified problem in either the NO or the NO<sub>2</sub> measurements from DC-8. Here and in what follows we use total NO<sub>x</sub> as the comparison metric.

Comparisons of simulated and observed NO<sub>x</sub> and PAN in Fig. 3 show a low bias in the model with 2000 Asian emissions, which largely disappears in the model with 2006 Asian emissions. The doubling of anthropogenic NO<sub>x</sub> emissions over eastern Asia from 2000 to 2006 increases NO<sub>x</sub> concentrations by 3 pptv over the Northeast Pacific in the model. The PAN simulation with 2006 Asian emissions shows no bias relative to the DC-8 observations but a 25% underestimate relative to the C-130 observations, consistent with the 23% systematic difference in PAN measurements between the two aircraft (Chen et al., 2007). The 2000–2006 rise in Asian anthropogenic emissions increases the mean simulated PAN concentrations by 26 pptv. Jaffe et al. (2007) compared the INTEX-B C-130 aircraft observations of NO<sub>x</sub> and PAN to their previous observations from the PHOBEA aircraft campaign in 1999 over the Northwest coast of the United States, and found no significant change in NO<sub>x</sub> but a 22% mean increase in PAN.

Model results for ozone in Fig. 3 show a 3 ppbv mean increase from the 2000–2006 rise in Asian anthropogenic emissions. The model result with 2006 Asian emissions is consistent with DC-8 measurements. Comparison with C-130 measurements shows a negative bias of 5 ppbv. The DC-8 aircraft covered a large region over the Northeast Pacific, while the C-130 flew over the western North American coast (Fig. 1), where stratospheric influence on ozone is particularly strong in spring (Cooper et al., 2004). Hudman et al. (2004) previously found that GEOS-Chem underestimated observed

**Transpacific  
transport of ozone  
pollution**

**L. Zhang**

Title Page

Abstract

Introduction

Conclusions

References

Tables

Figures

◀

▶

◀

▶

Back

Close

Full Screen / Esc

Printer-friendly Version

Interactive Discussion



ozone concentrations from the ITCT 2K2 campaign over California in April–May 2002 by up to 10 ppbv due to its failure to reproduce high-ozone layers of stratospheric origin.

We further compared model results with sonde measurements from IONS-06. Figure 5 shows the comparison with the mean ozonesonde profiles at Trinidad Head on the northern California coast (41° N, 124° W) and Richland in Washington (46° N, 119° W) during the INTEX-B period. The model reproduces the mean observed ozone profile at Trinidad Head but is 5 ppbv too low at 2–5 km. At Richland where stratospheric influences are more pronounced, the model is 10 ppbv too low in the free troposphere. Similar GEOS-Chem underestimate of the ozonesonde observations at Trinidad Head was reported by Hudman et al. (2004) for the ITCT-2K2 aircraft campaign, and attributed to the inability of the model to reproduce the frequent stratospheric intrusions seen in the sonde profiles.

## 5 Satellite and aircraft observations of transpacific transport

### 5.1 Transpacific transport as seen from satellites

Figure 6 shows AIRS and TES time series for the INTEX-B period over the Northwest and Northeast Pacific. AIRS has daily global coverage while TES is much sparser. AIRS observations of CO column over the Northwest Pacific show Asian outflow events every 3–6 days. These outflow events are associated with the passage of cold fronts across the Asian Pacific Rim (Liu et al., 2003; Heald et al., 2003). CO shows a decreasing trend from April to May over the Northeast Pacific due to the seasonal decline of biomass burning in Southeast Asia (Duncan et al., 2003). The CO column data over the Northeast Pacific identify two major events of transpacific transport of Asian pollution during the INTEX-B period. The two events were also seen by in situ observations. Event 1 was observed from the C-130 on 1 May (Barletta et al., 2007), and was also observed at the MBO site as shown in Sect. 7.1. Event 2 was observed from the DC-8 on 9 May, as discussed in Sect. 5.2.

## Transpacific transport of ozone pollution

L. Zhang

Title Page

Abstract

Introduction

Conclusions

References

Tables

Figures

◀

▶

◀

▶

Back

Close

Full Screen / Esc

Printer-friendly Version

Interactive Discussion





**Transpacific  
transport of ozone  
pollution****L. Zhang**

Title Page

Abstract

Introduction

Conclusions

References

Tables

Figures

◀

▶

◀

▶

Back

Close

Full Screen / Esc

Printer-friendly Version

Interactive Discussion



TES observations of CO column show similar temporal variation as AIRS ( $r=0.75$  for both regions) but with larger variability. Figure 6 also shows TES observations of ozone concentrations retrieved at 680 hPa (corresponding to a broad mid-troposphere weighting function). The time series of TES CO and ozone observations are not always correlated. There are some periods with high ozone but low CO, such as 2 May over the Northwest Pacific and 14 May over the Northeast Pacific. Stratospheric intrusions occur ubiquitously throughout the midlatitudes (Cooper et al., 2004), and mixing Asian pollution plumes with stratospheric air masses obfuscates the  $O_3$ -CO correlations (Nowak et al., 2004). After filtering out TES observations with stratospheric influence as diagnosed by TES  $O_3/CO$  at 680 hPa  $>0.6 \text{ mol mol}^{-1}$  (a stricter criteria than aircraft measurements due to the broad weighting functions in satellite retrievals), we find strong positive correlations ( $r>0.5$ ) between the time series of TES CO and ozone observations for both regions. These correlations, likely driven by contrasts of Asian outflow and clean tropical marine air masses, suggest a combined export of ozone and CO pollution from the Asian continent. We examine this correlation in more detail below for a well-defined transpacific plume.

## 5.2 Transpacific transport event on 5–9 May

The transpacific event of 5–9 May was observed by both satellites and aircraft. Figure 7 shows daily AIRS and TES observations of CO for that period along with the corresponding GEOS-Chem simulation. AIRS with its high coverage illustrates the progression of the event and the GEOS-Chem simulation is highly consistent. The Asian pollution plume is lifted with a southeastward moving front and rapidly transported in westerly winds at  $30^\circ$ – $50^\circ$ N across the Pacific. It breaks into two directions when crossing the Pacific high pressure system. The northern branch travels to Alaska in a circulation around the Aleutian Low, while the southern branch flows around the Pacific High and impacts the west coast of North America on 9 May.

Also shown in Fig. 7 are the GEOS-Chem model fields sampled along the TES orbit tracks and smoothed with TES averaging kernels. The model reproduces the

5 variability observed by TES ( $r=0.80$ ). TES observations are relatively sparse but are qualitatively consistent with AIRS. Figure 8 shows the corresponding TES observations for ozone and the GEOS-Chem simulation of the Asian ozone pollution enhancement (determined by difference between the standard simulation and a sensitivity simulation with Asian anthropogenic sources shut off). Model results display a band of Asian ozone pollution accompanying CO and moving eastward within  $30^{\circ}$ – $50^{\circ}$  N, consistent with the pattern observed by TES.

10 Figure 8 (right panel) shows correlations of TES ozone and CO measurements for the pollution plume. Ozone and CO are positively correlated for the pollution plume both in TES observations and the model simulation. The enhancement ratio ( $dO_3/dCO$ ) of  $0.14 \pm 0.05 \text{ mol mol}^{-1}$  (standard deviation calculated by the bootstrap method; Venables and Ripley, 1999) in the Asian outflow on 6 May is smaller than summertime observations of  $0.2$ – $0.5 \text{ mol mol}^{-1}$  at surface sites in eastern North America (Parrish et al., 1993; Chin et al., 1994), and  $0.6 \text{ mol mol}^{-1}$  observed in Asian outflow by TES  
15 in July (Zhang et al., 2006). The smaller enhancement ratio is likely due to low photochemical activity in the springtime (Pierce et al., 2003). The larger  $dO_3/dCO$  ratio of  $0.39 \pm 0.12 \text{ mol mol}^{-1}$  observed on 8 May (with 90% confidence from t-test) is consistent with the typical ratios of  $0.2$ – $0.5 \text{ mol mol}^{-1}$  in industrial or biomass burning plumes from aircraft measurements over the Northeast Pacific (Price et al., 2004), and suggests continuous ozone production in the plume during transport across the Pacific.  
20 The model reproduces the observed  $O_3$ -CO correlations at least qualitatively and these correlations disappear in a sensitivity simulation without Asian anthropogenic emissions, indicating that they are driven by Asian ozone pollution.

25 Figure 9 shows the aircraft vertical profiles sampling the pollution plume on the 9 May flight out of Anchorage (flight track shown in Fig. 7). The northern branch sampled at  $53^{\circ}$  N,  $150^{\circ}$  W, and 3.5–7 km altitude shows CO up to 182 ppbv and PAN up to 690 pptv. Ozone mixing ratios are about 65 ppbv, not significantly higher than the local background. The southern branch sampled at  $42^{\circ}$  N,  $138^{\circ}$  W, and 2.5–5.5 km altitude shows CO up to 206 ppbv and ozone up to 85 ppbv; PAN mixing ratios (125 pptv)

---

**Transpacific  
transport of ozone  
pollution****L. Zhang**

---

[Title Page](#)[Abstract](#)[Introduction](#)[Conclusions](#)[References](#)[Tables](#)[Figures](#)[◀](#)[▶](#)[◀](#)[▶](#)[Back](#)[Close](#)[Full Screen / Esc](#)[Printer-friendly Version](#)[Interactive Discussion](#)

are much lower than in the northern branch. The difference in ozone enhancements reflects the effect of subsidence driving PAN decomposition to  $\text{NO}_x$  and hence ozone production (Kotchenruther et al., 2001; Heald et al., 2003; Hudman et al., 2004).

The ozone production in the southern branch is relevant for impact on the United States. Figure 10 shows kinematic backward and forward trajectories based on reanalysis data from National Centers for Environmental Prediction (Fuelberg et al., 2007) for the enhanced CO layers of Asian pollution ( $\text{CO} > 125$  ppbv and 2–7 km) as shown in Fig. 9. The 9 May flight measured distinct northern and southern branches of the plumes, but the backward trajectories in Fig. 10 demonstrate their common origin. The 3-day forward trajectories from the aircraft tracks show the different fates of the two pollution branches. The northern branch remains at high altitude over the Gulf of Alaska, while the southern branch subsides to impact the United States. However, a large part of that southern branch cycles around the Pacific High and avoids contact with North America. It becomes instead the tropical “river of pollution” flowing back to the western equatorial Pacific in the marine boundary layer, as observed in the PEM-Tropics B aircraft campaign (Staudt et al., 2001; Martin et al., 2003).

## 6 Mean transpacific transport of Asian ozone and its precursors

We now generalize from the case study of 6–9 May to the mean transpacific Asian pollution influence during the INTEX-B period of 17 April–15 May, 2006. Figure 11 shows the mean enhancements of gross ozone production rates at 800 hPa due to Asian anthropogenic emissions, as determined by difference between the standard simulation and the sensitivity simulation with Asian anthropogenic emissions shut off. GEOS-Chem ozone production rates in the standard simulation are consistent with those from box models constrained by aircraft measurements over the Northwest Pacific (Auvray et al., 2007). Transpacific transport of ozone pollution mostly takes place in the free troposphere (Price et al., 2004), and we show 800 hPa in Fig. 11 as most relevant for North American air quality. We see fast production of Asian ozone pollution ( $>5$  ppbv

### Transpacific transport of ozone pollution

L. Zhang

Title Page

Abstract

Introduction

Conclusions

References

Tables

Figures

◀

▶

◀

▶

Back

Close

Full Screen / Esc

Printer-friendly Version

Interactive Discussion



**Transpacific  
transport of ozone  
pollution****L. Zhang**

Title Page

Abstract

Introduction

Conclusions

References

Tables

Figures

◀

▶

◀

▶

Back

Close

Full Screen / Esc

Printer-friendly Version

Interactive Discussion



$d^{-1}$ ) over the Asian continent where  $NO_x$  concentrations are high, but also sustained production ( $>1$  ppbv  $d^{-1}$ ) across the Pacific at  $25^\circ N$ – $40^\circ N$  and a secondary maximum off the coast of California. Hudman et al. (2004) previously found that the ozone production efficiency is particularly high over the subsiding East Pacific because of the strong radiation and low humidity. This combined with the release of  $NO_x$  from PAN decomposition promotes relatively rapid ozone production ( $>1.5$  ppbv  $d^{-1}$ ).

Mean 800 hPa winds and sea level pressures for the INTEX-B period are also shown in Fig. 11. The Pacific High and Aleutian Low are prominent features and drive the westerly transport across the central and eastern Pacific (Liang et al., 2005). We see from Fig. 11 that splitting of Asian plumes over the Northeast Pacific is an expected feature of the mean circulation: the northern branch circulates around the Aleutian Low, while the southern branch circulates around the Pacific High and affects the western United States. As shown in Fig. 11, high ozone production rate is limited to the southern branch.

Figure 12 shows the mean simulated Asian pollution enhancements of CO, PAN, ozone, and  $NO_x$  at 800 hPa for the INTEX-B period. They show the same pattern of Asian outflow but then become latitudinally separated during transport across the Pacific. CO and PAN have relatively long lifetimes and little production over the Pacific; their transport is mainly north of  $35^\circ N$ . By contrast, Asian ozone and  $NO_x$  are more enhanced at  $25^\circ N$ – $40^\circ N$ , corresponding to the southern branch of transpacific transport in Fig. 11 which provides a sustained source. The secondary maxima of Asian  $NO_x$  and ozone over the subtropical Pacific match the secondary maxima of Asian ozone production in Fig. 11.

The INTEX-B aircraft observations provide evidence for this latitudinal separation between Asian enrichments of  $NO_x$  and PAN. Figure 13 shows the mean observed and simulated latitudinal gradients of  $NO_x$  and PAN concentrations over the Northeast Pacific at 1.5–5 km altitude.  $NO_x$  concentrations decrease with increasing latitude. PAN increases with increasing latitude, with a step function at  $40^\circ N$ . The patterns are similar in the model and in the observations, confirming the mechanism of ozone production

driven by PAN decomposition over the subtropical Pacific.

## 7 Impact of Asian pollution on North American surface ozone

### 7.1 Measurements at Mt. Bachelor Observatory

The Mt. Bachelor Observatory, a mountain site in central Oregon, is particularly sensitive to Asian influences due to its exposure to the free troposphere (Jaffe et al., 2005; Weiss-Penzias et al., 2006). We use measurements at MBO to test model estimates of Asian influence in North American background air. Figure 14 shows the 3-hourly observed and modeled time series of CO and ozone at MBO during the INTEX-B period. The model is unbiased for ozone and biased low by 20 ppbv for CO, as discussed previously in the context of the aircraft data. The synoptic-scale variability is well captured, particularly for ozone. The model predicts larger Asian pollution ozone enhancements in May than April due to increasing photochemical activity. May is climatologically the month of peak Asian influence on US ozone (Jacob et al., 1999). The day-to-day temporal variability of Asian pollution ozone simulated by the model is small, consistent with the previous analysis of Fiore et al. (2002) and Goldstein et al. (2004). Asian ozone pollution in the model mostly appears as a background enhancement rather than as discrete plumes.

Asian plumes with enhanced CO and ozone concentrations have been previously observed at MBO (Jaffe et al., 2005; Weiss-Penzias et al., 2007). The INTEX-B period is unusual in that no strong plumes of CO were detected at MBO (Reidmiller et al., in preparation). Arrows in Fig. 14 show Asian CO pollution maxima at MBO as indicated by the model and discussed further by Wolfe et al. (2007) in connection with the MBO data. Detecting these Asian pollution events in the CO observations is a challenge because of other, larger factors of variability. The observed CO enhancement on 1 May could be of Asian origin. The ozone observations show a coincident sharp increase but the model implies that only a small part of that increase is due to Asian emissions.

Title Page

Abstract

Introduction

Conclusions

References

Tables

Figures

◀

▶

◀

▶

Back

Close

Full Screen / Esc

Printer-friendly Version

Interactive Discussion



**Transpacific  
transport of ozone  
pollution****L. Zhang**

Title Page

Abstract

Introduction

Conclusions

References

Tables

Figures

◀

▶

◀

▶

Back

Close

Full Screen / Esc

Printer-friendly Version

Interactive Discussion



The mean observed ozone concentration at MBO during INTEX-B is  $54 \pm 10$  ppbv (mean  $\pm$  standard deviation), compared with  $53 \pm 9$  ppbv in the model. Asian anthropogenic emissions increase ozone concentrations at MBO by  $9.2 \pm 2.5$  ppbv for the INTEX-B time period. We thus see that Asian pollution is an important component of the model ozone background at MBO; without this contribution the model would greatly underestimate the measurements. In a previous study with the GEOS-Chem model, Hudman et al. (2004) found a mean Asian pollution enhancement of 7 ppbv ozone at a California mountain site in May 2002. The difference can be explained by rising Asian emissions. As shown in the bottom panel of Fig. 14, rising Asian emissions from 2000 to 2006 have increased ozone at MBO by 3 ppbv on average in April–May and up to 5 ppbv in events.

## 7.2 Impact on surface ozone air quality

Figure 15 (top left panel) shows the mean simulated surface ozone enhancement from Asian anthropogenic emissions over North America for the INTEX-B period. Asian ozone enhancements are 5–7 ppbv in west and 2–5 ppbv in the east. The highest values are in the mountainous west.

To interpret these results we conducted two tagged  $O_x$  simulations, one using archived 3-D fields of daily production rates and loss frequencies from the standard simulation, and the other using those from the sensitivity simulation with Asian anthropogenic emissions shut off. The difference of the two simulations diagnoses the contributions from different production regions as sources of transpacific Asian ozone pollution. We thus distinguish in Fig. 15 between production in the Asian boundary layer (up to 700 hPa), production in the Pacific boundary layer (up to 700 hPa), and production in the free troposphere (above 700 hPa). Summation of these three tagged tracers gives the total Asian pollution ozone enhancement in the top left panel.

As shown in Fig. 15, most of the Asian ozone enhancement in western Canada is from transport of ozone produced in the Asian boundary layer. The western United States and northern Mexico are more influenced by the southern branch of transpa-

cific transport, where continuous ozone production from exported Asian  $\text{NO}_x$  and PAN is comparable in magnitude to direct transport from the Asian boundary layer. Ozone production in the free troposphere is more important for US influence than in the subsiding air masses below 700 hPa (Pacific boundary layer), as ozone produced in the latter region tends to remain over the subtropical Pacific rather than affect North America (Figs. 10 and 15).

Previous studies reported that pollution transported from Asia may contribute 3–5 ppbv to the ozone background over the western United States in the spring (Berntsen et al., 1999; Yienger et al., 2000). We find in the model that the 2000–2006 rise of Asian anthropogenic emissions increased surface ozone by 1–2 ppbv in the western United States (the larger impact of 3 ppbv at MBO is on account of its elevation). We conducted further sensitivity simulations to separate the contributions from the 100% rise in Asian  $\text{NO}_x$  emissions and the 45% rise in Asian NMVOC emissions, as the latter would affect PAN formation, and find that the ozone enhancement is most sensitive to  $\text{NO}_x$  emissions. The rise in Asian NMVOC emissions alone increases ozone by at most 0.4 ppbv anywhere in North America.

## 8 Conclusions

We used an ensemble of aircraft, satellite, sonde, and surface observations during the INTEX-B two-aircraft campaign over the Northeast Pacific (April–May 2006) to better understand and quantify the transpacific transport of Asian pollution and its effect on North American ozone air quality. We interpreted this ensemble of observations with a global 3-D model of tropospheric chemistry (GEOS-Chem). We addressed the impact of the recent rise in Asian emissions (2000–2006) on surface ozone air quality in North America.

Tropospheric  $\text{NO}_2$  column observations from the OMI satellite instrument provide top-down constraints of anthropogenic  $\text{NO}_x$  emissions in eastern Asia (including China, Japan, and Korea) in April–May 2006. We find a factor of 2 increase compared with

### Transpacific transport of ozone pollution

L. Zhang

Title Page

Abstract

Introduction

Conclusions

References

Tables

Figures

◀

▶

◀

▶

Back

Close

Full Screen / Esc

Printer-friendly Version

Interactive Discussion



the anthropogenic NO<sub>x</sub> emission inventory from Streets et al. (2003) for the year 2000. This factor of 2 increase reflects a combination of 2000–2006 actual growth of Asian NO<sub>x</sub> emissions (China) and an underestimate in the inventory (Korea, Japan). China accounted for over 80% of eastern Asian anthropogenic NO<sub>x</sub> emissions as of 2006.

5 The model provides a good simulation of the ozone, NO<sub>x</sub>, and PAN mean vertical profiles observed from the two INTEX-B aircraft. The simulation is only weakly sensitive to the 2000–2006 rise of Asian emissions in terms of comparison to observations; ozone increases by 3 ppbv on average. Simulated ozone over the west coast of North America is 5 ppb lower than observed from aircraft and ozonesondes during INTEX-B,  
10 which we attribute to preferential stratospheric inflow over this region not resolved by the model. The model is 15% too low for CO compared to the aircraft observations, which we attribute tentatively to excessive OH (model values for OH are 27% higher than observed in INTEX-B).

Satellite observations of CO columns from AIRS and TES indicate at least two major  
15 events of transpacific Asian pollution during the INTEX-B time period. Tropospheric ozone observations from TES do not show a simple correlation with CO, reflecting at least in part the complicating effect of stratospheric influence. Filtering out this stratospheric influence reveals strong positive correlations between TES CO and ozone over the North Pacific. These correlations, likely driven by contrasts of Asian outflow and  
20 clean tropical marine air masses, indicate collocated export of ozone and CO pollution from the Asian continent.

We examined in detail a major transpacific Asian pollution plume sampled by the INTEX-B aircraft on 9 May. Measurements from AIRS and TES tracked the transpacific progression of this event. TES observed positive O<sub>3</sub>-CO correlations in the pollution plume, offering some evidence for net ozone production during transport across the  
25 Pacific. The plume split into northern and southern branches over the Northeast Pacific. Elevated ozone was observed by aircraft in the subsiding southern branch and was consistent with production from PAN decomposition.

Generalization to the mean transpacific Asian pollution influence during the INTEX-B

---

## Transpacific transport of ozone pollution

L. Zhang

---

Title Page

Abstract

Introduction

Conclusions

References

Tables

Figures

◀

▶

◀

▶

Back

Close

Full Screen / Esc

Printer-friendly Version

Interactive Discussion





---

**Transpacific  
transport of ozone  
pollution****L. Zhang**

---

[Title Page](#)[Abstract](#)[Introduction](#)[Conclusions](#)[References](#)[Tables](#)[Figures](#)[⏪](#)[⏩](#)[◀](#)[▶](#)[Back](#)[Close](#)[Full Screen / Esc](#)[Printer-friendly Version](#)[Interactive Discussion](#)

period showed that this splitting of pollution plumes into two branches over the North-east Pacific is an expected climatological feature driven by the circulations around the Pacific High and the Aleutian Low. The northern branch circulates around the Aleutian Low, while the southern branch circulates around the Pacific High to affect the United States and northern Mexico. Model results show high ozone production rates from Asian pollution in the southern branch, including a secondary maximum off the coast of California driven by subsidence. Concentrations of  $\text{NO}_x$  and PAN measured from the aircraft show opposite latitudinal gradients in the lower troposphere, consistent with the model, and confirming the mechanism of PAN decomposition to  $\text{NO}_x$  as a driver for transpacific ozone production.

We tested the model simulation of Asian pollution influences over North America with measurements at Mt. Bachelor Observatory (MBO) in central Oregon (2.7 km altitude). The model reproduces the ozone observations at MBO with no significant bias. Asian ozone pollution increases ozone concentrations in the model at MBO by  $9.2 \pm 2.5$  ppbv for the INTEX-B time period, representing an important contribution to total ozone in the model ( $53 \pm 9$  ppbv) and its ability to fit observations ( $54 \pm 10$  ppbv). The temporal variability of Asian ozone in the model is still small and undetectable in the observations. The 2000–2006 rise in Asian anthropogenic emissions increased model ozone at MBO by 3 ppbv on average and up to 5 ppbv in events.

We find that Asian anthropogenic emissions increased surface ozone concentrations by 5–7 ppbv in western North America during the INTEX-B period. The 2000–2006 rise in Asian anthropogenic emissions, including in particular the doubling of  $\text{NO}_x$  emissions, increased that influence by 1–2 ppbv. Most of the Asian ozone pollution in western Canada originates from production in the Asian continental boundary layer. The western United States and northern Mexico are more impacted by the southern branch of transpacific transport, which has sustained ozone production during transpacific transport driven by decomposition of PAN. About half of Asian anthropogenic ozone affecting the United States is produced in the Asian boundary layer while the other half is produced during transpacific transport.

*Acknowledgements.* This work was funded by the NASA Global Tropospheric Chemistry Program and by NASA Headquarters under the Earth and Space Science Fellowship Program Grant NNX07AN65H to L. Zhang.

## References

- 5 Aumann, H. H., Chahine, M. T., Gautier, C., Goldberg, M. D., Kalnay, E., McMillin, L. M., Revercomb, H., Rosenkranz, P. W., Smith, W. L., Staelin, D. H., Strow, L. L., and Susskind, J.: AIRS/AMSU/HSB on the Aqua mission: Design, science objectives, data products and processing systems, *IEEE Trans. Geosci. Remote Sens.*, 41, 253–264, 2003.
- 10 Auvray, M., Bey, I., Lull, E., Schultz, M. G., and Rast, S.: A model investigation of tropospheric ozone chemical tendencies in long-range transported pollution plumes, *J. Geophys. Res.*, 112, D05304, doi:10.1029/2006JD007137, 2007.
- Barletta, B., Meinardi, S., Atlas, E., Blake, N. J., Baker, A. K., Beyersdorf, A. J., McKeachie, R., Midyett, J. R., Novak, B. J., Yang, M., Blake, D., R.: Nonmethane Hydrocarbon (NMHC) Characterization of Asian Outflow During the INTEX-B Campaign: a Case Study from May 1, *Eos Trans. AGU*, 88(52), Fall Meet. Suppl., Abstract A33A-0822, 2007.
- 15 Beer, R., Glavich, T. A., and Rider, D. M.: Tropospheric Emission Spectrometer for the Earth Observing System's Aura satellite, *Appl. Opt.*, 40, 2356–2367, 2001.
- Berntsen, T. K., Karlsdottir, S., and Jaffe, D. A.: Influence of Asian emissions on the composition of air reaching the Northwestern United States, *Geophys. Res. Lett.*, 26, 2171–2174, 1999.
- 20 Bertschi, I. B., Jaffe, D. A., Jaeglé, L., Price, H. U., and Dennison, J. B.: PHOBEA/ITCT 2002 airborne observations of trans-Pacific transport of ozone, CO, VOCs and aerosols to the northeast Pacific: Impacts of Asian anthropogenic and Siberian Boreal fire emissions, *J. Geophys. Res.*, 109, D23S12, doi:10.1029/2003JD004328, 2004.
- Bey, I., Jacob, D. J., Yantosca, R. M., Logan, J. A., Field, B. D., Fiore, A. M., Li, Q., Liu, H., Mickley, L. J., and Schultz, M. G.: Global modeling of tropospheric chemistry with assimilated meteorology: Model description and evaluation, *J. Geophys. Res.*, 106, 23 073–23 089, 2001.
- 25 Boersma, K. F., Eskes, H. J., Veefkind, J. P., Brinksma, E. J., van der A, R. J., Sneep, M., van den Oord, G. H. J., Levelt, P. F., Stammes, P., Gleason, J. F., and Bucsela, E. J.: Near-real time retrieval of tropospheric NO<sub>2</sub> from OMI, *Atmos. Chem. Phys.*, 7, 2103–2118, 2007, <http://www.atmos-chem-phys.net/7/2103/2007/>.
- 30

## Transpacific transport of ozone pollution

L. Zhang

Title Page

Abstract

Introduction

Conclusions

References

Tables

Figures

◀

▶

◀

▶

Back

Close

Full Screen / Esc

Printer-friendly Version

Interactive Discussion



**Transpacific  
transport of ozone  
pollution****L. Zhang**

Title Page

Abstract

Introduction

Conclusions

References

Tables

Figures

◀

▶

◀

▶

Back

Close

Full Screen / Esc

Printer-friendly Version

Interactive Discussion

- Boersma, K. F., Jacob, D. J., Bucsela, E. J., Perring, A. E., Dirksen, R., van der A, R. J., Yantosca, R. M., Park, R. J., Wenig, M. O., Bertram, T. H., and Cohen, R. C.: Validation of OMI tropospheric NO<sub>2</sub> observations during INTEX-B and application to constrain NO<sub>x</sub> emissions over the eastern United States and Mexico, *Atmos. Environ.*, in press, 2008.
- 5 Bowman, K. W., Rodgers, C. D., Kulawik, S. S., Worden, J., Sarkissian, E., Osterman, G., Steck, T., Lou, M., Eldering, A., Shephard, M., Worden, H., Lampel, M., Clough, S., Brown, P., Rinsland, C., Gunson, M., and Beer, R.: Tropospheric emission spectrometer: Retrieval method and error analysis, *IEEE Trans. on Geosci. Remote Sensing*, 44(5), 1297–1307, 2006.
- 10 Chen, G., Kleb, M. M., Brune, W. H., and Flocke, F. M.: An Overview of INTEX-B/MILAGRO/IMPEX Instrument and Measurement Intercomparison, *Eos Trans. AGU*, 88(52), Fall Meet. Suppl., Abstract A33A-0817, 2007.
- Chin, M., Jacob, D. J., Munger, J. W., Parrish, D. D., and Doddridge, B. G.: Relationship of ozone and carbon monoxide over North America, *J. Geophys. Res.*, 99, 14,565–14,573, 1994.
- 15 Cooper, O. R., Forster, C., Parrish, D., Trainer, M., Dunlea, E., Ryerson, T., Hübler, G., Fehsenfeld, F., Nicks, D., Holloway, J., de Gouw, J., Warneke, C., Roberts, J. M., Flocke, F., and Moody, J.: A case study of transpacific warm conveyor belt transport: Influence of merging airstreams on trace gas import to North America, *J. Geophys. Res.*, 109, D23S08, doi:10.1029/2003JD003624, 2004.
- 20 Dickerson, R. R., Li, C., Li, Z., Marufu, L. T., Stehr, J. W., McClure, B., Krotkov, N., Chen, H., Wang, P., Xia, X., Ban, X., Gong, F., Yuan, J., and Yang, J.: Aircraft observations of dust and pollutants over northeast China: Insight into the meteorological mechanisms of transport, *J. Geophys. Res.*, 112, D24S90, doi:10.1029/2007JD008999, 2007.
- 25 Duncan, B. N., Martin, R. V., Staudt, A. C., Yevich, R., and Logan, J. A.: Interannual and seasonal variability of biomass burning emissions constrained by satellite observations, *J. Geophys. Res.*, 108(D2), 4100, doi:10.1029/2002JD002378, 2003.
- Fiore, A. M., Jacob, D. J., Bey, I., Yantosca, R. M., Field, B. D., Fusco, A. C., and Wilkinson, J. G.: Background ozone over the United States in summer: Origin, trend, and contribution to pollution episodes, *J. Geophys. Res.*, 107(D15), 4275, doi:10.1029/2001JD000982, 2002.
- 30 Fiore, A., Jacob, D. J., Liu, H., Yantosca, R. M., Fairlie, T. D., and Li, Q.: Variability in surface ozone background over the United States: Implications for air quality policy, *J. Geophys. Res.*, 108(D24), 4787, doi:10.1029/2003JD003855, 2003.



**Transpacific  
transport of ozone  
pollution****L. Zhang**

Title Page

Abstract

Introduction

Conclusions

References

Tables

Figures

◀

▶

◀

▶

Back

Close

Full Screen / Esc

Printer-friendly Version

Interactive Discussion

Forster, C., Cooper, O., Stohl, A., Eckhardt, S., James, P., Dunlea, E., Nicks Jr., D. K., Holloway, J. S., Hübler, G., Parrish, D. D., Ryerson, T. B., and Trainer, M.: Lagrangian transport model forecasts and a transport climatology for the Intercontinental Transport and Chemical Transformation 2002 (ITCT 2K2) measurement campaign, *J. Geophys. Res.*, 109, D07S92, doi:10.1029/2003JD003589, 2004.

Fuelberg, H. E., Porter, M. J., Kiley, C. M., Halland, J. J., and Morse, D.: Meteorological conditions and anomalies during the Intercontinental Chemical Transport Experiment – North America, *J. Geophys. Res.*, 112, D12S06, doi:10.1029/2006JD007734, 2007.

Goldstein, A. H., Millet, D. B., McKay, M., Jaeglé, L., Horowitz, L., Cooper, O., Hudman, R., Jacob, D. J., Oltmans, S., and Clarke, A.: Impact of Asian emissions on observations at Trinidad Head, California, during ITCT 2K2, *J. Geophys. Res.*, 109, D23S17, doi:10.1029/2003JD004406, 2004.

Heald, C. L., Jacob, D. J., Fiore, A. M., Emmons, L. K., Gille, J. C., Deeter, M. N., Warner, J., Edwards, D. P., Crawford, J. H., Hamlin, A. J., Sachse, G. W., Browell, E. V., Avery, M. A., Vay, S. A., Westberg, D. J., Blake, D. R., Singh, H. B., Sandholm, S. T., Talbot, R. W., and Fuelberg, H. E.: Asian outflow and transpacific transport of carbon monoxide and ozone pollution: An integrated satellite, aircraft and model perspective, *J. Geophys. Res.*, 108(D24), 4804, doi:10.1029/2003JD003507, 2003.

Heald, C. L., Jacob, D. J., Park, R. J., Alexander, B., Fairlie, D., Yantosca, R. M., and Chu, A.: Transpacific transport of Asian anthropogenic aerosols and its impact on surface air quality in the United States, *J. Geophys. Res.*, 111, D14310, doi:10.1029/2005JD006847, 2006.

Hudman, R. C., Jacob, D. J., Cooper, O. R., Evans, M. J., Heald, C. L., Park, R. J., Fehsenfeld, F., Flocke, F., Holloway, J., Hübler, G., Kita, K., Koike, M., Kondo, Y., Neuman, A., Nowak, J., Oltmans, S., Parrish, D., Roberts, J. M., and Ryerson, T.: Ozone production in transpacific Asian pollution plumes and implications for ozone air quality in California, *J. Geophys. Res.*, 109, D23S10, doi:10.1029/2004JD004974, 2004.

Hudman, R. C., Jacob, D. J., Turquety, S., Leibensperger, E. M., Murray, L. T., Wu, S., Gilliland, A. B., Avery, M., Bertram, T. H., Brune, W., Cohen, R. C., Dibb, J. E., Flocke, F. M., Fried, A., Holloway, J., Neuman, J. A., Orville, R., Perring, A., Ren, X., Sachse, G. W., Singh, H. B., Swanson, A., and Wooldridge, P. J.: Surface and lightning sources of nitrogen oxides over the United States: Magnitudes, chemical evolution, and outflow, *J. Geophys. Res.*, 112, D12S05, doi:10.1029/2006JD007912, 2007.

Huntrieser, H., Schlager, H., Höller, H., Schumann, U., Betz, H.D., Boccippio, D., Brunner,



**Transpacific  
transport of ozone  
pollution****L. Zhang**

Title Page

Abstract

Introduction

Conclusions

References

Tables

Figures

◀

▶

◀

▶

Back

Close

Full Screen / Esc

Printer-friendly Version

Interactive Discussion

D., Forster, C., and Stohl, A.: Lightning produced  $\text{NO}_x$  in tropical, subtropical and midlatitude thunderstorms: New insights from airborne and lightning observations, *Geophys. Res. Abstr.*, 8, 03286, SRef-ID:1607-7962/gra/EGU06-A-03286, 2006.

Jaeglé, L., Jaffe, D. A., Price, H. U., Weiss, P., Palmer, P. I., Evans, M. J., Jacob, D. J., and Bey, I.: Sources and budgets for  $\text{CO}$  and  $\text{O}_3$  in the Northeastern Pacific during the spring of 2001: Results from the PHOBEA-II Experiment, *J. Geophys. Res.*, 108(D20), 8802, doi:10.1029/2002JD003121, 2003.

Jaeglé, L., Steinberger, L., Martin, R. V., and Chance, K.: Global partitioning of  $\text{NO}_x$  sources using satellite observations: Relative roles of fossil fuel combustion, biomass burning and soil emissions, *Faraday Disc.*, 130, 407–423, 2005.

Jacob, D. J., Logan, J. A., Gardner, G. M., Yevich, R. M., Spivakovsky, C. M., Wofsy, S. C., Sillman, S., and Prather, M. J.: Factors regulating ozone over the United States and its export to the global atmosphere, *J. Geophys. Res.*, 98, 14 817–14 826, 1993.

Jacob D. J., Heikes, B. G., Fan, S.-M., Logan, J. A., Mauzerall, D. L., Bradshaw, J. D., Singh, H. B., Gregory, G. L., Talbot, R. W., Blake, D. R., and Sachse, G. W.: Origin of ozone and  $\text{NO}_x$  in the tropical troposphere : A photochemical analysis of aircraft observations over the South Atlantic basin, *J. Geophys. Res.*, 101, 24 235–24 250, 1996.

Jacob, D. J., Logan, J. A., and Murti, P. P.: Effect of rising emissions on surface ozone in the United States, *Geophys. Res. Lett.*, 26, 2175–2178, 1999.

Jaffe, D. A., Anderson, T., Covert, D., Trost, B., Danielson, J., Simpson, W., Blake, D., Harris, J., and Streets, D.: Observations of ozone and related species in the northeast Pacific during the PHOBEA campaigns: 1. Ground-based observations as Cheeka Peak, *J. Geophys. Res.*, 106, 7449–7461, 2001.

Jaffe, D., Price, H., Parrish, D. D., Goldstein, A., and Harris, J.: Increasing background ozone during spring on the west coast of North America, *Geophys. Res. Lett.*, 30(12), 1613, doi:10.1029/2003GL017024, 2003.

Jaffe, D., Prestbo, E., Swartzendruber, P., Weiss-Penzias, P., Kato, S., Takami, A., Hatakeyama, S., and Kajii, Y.: Export of atmospheric mercury from Asia, *Atmos. Environ.*, 39, 3029–3038, 2005.

Jaffe, D. A. and Ray, J.: Increase in surface ozone at rural sites in the western US, *Atmos. Environ.*, 41, 5452–5463, 2007.

Jaffe, D. A., Thornton, J., Wolfe, G., Reidmiller, D., Fischer, E. V., Jacob, D. J., Zhang, L., Cohen, R., Singh, H., Weinheimer, A., Flocke, F.: Can we detect an influence over North



**Transpacific  
transport of ozone  
pollution****L. Zhang**

Title Page

Abstract

Introduction

Conclusions

References

Tables

Figures

◀

▶

◀

▶

Back

Close

Full Screen / Esc

Printer-friendly Version

Interactive Discussion



America from increasing Asian NO<sub>x</sub> emissions?, *Eos Trans. AGU*, 88(52), Fall Meet. Suppl., Abstract A51E-04, 2007.

Kiley, C. M. and Fuelberg, H. E.: An examination of summertime cyclone transport processes during Intercontinental Chemical Transport Experiment (INTEX-A), *J. Geophys. Res.*, 111, D24S06, doi:10.1029/2006JD007115, 2006.

Kotchenruther, R. A., Jaffe, D. A., and Jaeglé, L.: Ozone Photochemistry and the Role of PAN in the Springtime Northeastern Pacific Troposphere: Results from the PHOBEA Campaign. *J. Geophys. Res.*, 106, 28 731–28 741, 2001.

Latto, A. and Fuelberg, H.: Quasi-Lagrangian Chemical Sampling during INTEX-B, *Eos Trans. AGU*, 88(52), Fall Meet. Suppl., Abstract A42A-08, 2007.

Levelt, P. F., van den Oord, G. H. J., Dobber, M. R., Mälkki, A., Visser, H., de Vries, J., Stammes, P., Lundell, J. O. V., and Saari, H.: The Ozone Monitoring Instrument, *IEEE Trans. Geosci. Remote Sens.*, 44(5), 1093–1101, 2006.

Li, Q., Jacob, D. J., Bey, I., Palmer, P. I., Duncan, B. N., Field, B. D., Martin, R. V., Fiore, A. M., Yantosca, R. M., Parrish, D. D., Simmonds, P. G., and Oltmans, S. J.: Transatlantic transport of pollution and its effects on surface ozone in Europe and North America, *J. Geophys. Res.*, 107(D13), 4166, doi:10.1029/2001JD001422, 2002.

Liang, Q., Jaeglé, L., Jaffe, D. A., Weiss-Penzias, P., Heckman, A., and Snow, J. A.: Long-range transport of Asian pollution to the northeast Pacific: Seasonal variations and transport pathways of carbon monoxide, *J. Geophys. Res.*, 109, D23S07, doi:10.1029/2003JD004402, 2004.

Liang, Q., Jaeglé, L., and Wallace, J. M.: Meteorological indices for Asian outflow and transpacific transport on daily to interannual timescales, *J. Geophys. Res.*, 110, D18308, doi:10.1029/2005JD005788, 2005.

Liang, Q., L. Jaeglé, Hudman, R. C., Turquety, S., Jacob, D. J., Avery, M. A., Browell, E. V., Sachse, G. W., Blake, D. R., Brune, W., Ren, X., Cohen, R. C., Dibb, J. E., Fried, A., Fuelberg, H., Porter, M., Heikes, B. G., Huey, G., Singh, H. B., and Wennberg, P. O.: Summertime influence of Asian pollution in the free troposphere over North America, *J. Geophys. Res.*, 112, D12S11, doi:10.1029/2006JD007919, 2007.

Liu, S. C., Trainer, M., Fehsenfeld, F. C., Parrish, D. D., Williams, E. J., Fahey, D. W., Gubler, G., and Murphy, P. C.: Ozone production in the rural troposphere and the implications for regional and global ozone distributions, *J. Geophys. Res.*, 92, 4191–4207, 1987.

Liu, H., Jacob, D. J., Bey, I., Yantosca, R. M., Duncan, B. N., and Sachse, G. W.: Transport

**Transpacific  
transport of ozone  
pollution****L. Zhang**

- pathways for Asian pollution outflow over the Pacific: Interannual and seasonal variations, *J. Geophys. Res.*, 108(D20), 8786, doi:10.1029/2002JD003102, 2003.
- Liu, J. and Mauzerall, D. L.: Estimating the average time for intercontinental transport of air pollutants, *Geophys. Res. Lett.*, 32, L11814, doi:10.1029/2005GL022619, 2005.
- 5 Luo, M., Rinsland, C. P., Rodgers, C. D., Logan, J. A., Worden, H., Kulawik, S., Eldering, A., Goldman, A., Shephard, M. W., Gunson, M., and Lampel, M.: Carbon monoxide measurements by TES and MOPITT – the influence of a priori data and instrument characteristics on nadir atmospheric species retrievals, *J. Geophys. Res.*, 112, D09303, doi:10.1029/2006JD007663, 2007a.
- 10 Luo, M., Rinsland, C., Fisher, B., Sachse, G., Diskin, G., Logan, J., Worden, H., Kulawik, S., Osterman, G., Eldering, A., Herman R., and Shephard, M.: TES carbon monoxide validation with DACOM aircraft measurements during INTEX-B 2006, *J. Geophys. Res.*, 112, D24S48, doi:10.1029/2007JD008803, 2007b.
- Martin, B. D., Fuelberg, H. E., Blake, N. J., Crawford, J. H., Logan, J. A., Blake, D. R., and Sachse, G. W.: Long range transport of Asian outflow to the equatorial Pacific, *J. Geophys. Res.*, 108(D2), 8322, doi:10.1029/2001JD001418, 2003.
- Martin, R. V., Jacob, D. J., Chance, K., Kurosu, T. P., Palmer, P. I., and Evans, M. J.: Global inventory of nitrogen oxide emissions constrained by space-based observations of NO<sub>2</sub> columns, *J. Geophys. Res.*, 108(D17), 4537, doi:10.1029/2003JD003453, 2003.
- 20 Martin, R. V., Sioris, C. E., Chance, K., Ryerson, T. B., Bertram, T. H., Wooldridge, P. J., Cohen, R. C., Neuman, J. A., Swanson, A., and Flocke, F. M.: Evaluation of space-based constraints on global nitrogen oxide emissions with regional aircraft measurements over and downwind of eastern North America, *J. Geophys. Res.*, 111, D15308, doi:10.1029/2005JD006680, 2006.
- 25 McLinden, C. A., Olsen, S. C., Hannegan, B., Wild, O., Prather, M. J., and Sundet, J.: Stratospheric ozone in 3-D models: A simple chemistry and the cross-tropopause flux, *J. Geophys. Res.*, 105(D11), 14,653–14,666, 2000.
- McMillan, W. W., Barnet, C., Strow, L., Chahine, M., Warner, J., McCourt, M., Novelli, P., Korontzi, S., Maddy, E., and Datta, S.: Daily global maps of carbon monoxide from NASA's Atmospheric Infrared Sounder, *Geophys. Res. Lett.*, 32, L11801, doi:10.1029/2004GL021821, 2005.
- 30 McMillan, W. W., Warner, J. X., Comer, M. M., et al.: AIRS views of transport from 12-22 July 2004 Alaskan/Canadian fires: Correlation of AIRS CO and MODIS AOD with forward

[Title Page](#)[Abstract](#)[Introduction](#)[Conclusions](#)[References](#)[Tables](#)[Figures](#)[◀](#)[▶](#)[◀](#)[▶](#)[Back](#)[Close](#)[Full Screen / Esc](#)[Printer-friendly Version](#)[Interactive Discussion](#)

trajectories and comparison of AIRS CO retrievals with DC-8 in situ measurements during INTEX-A/ICARTT, *J. Geophys. Res.*, in review, 2008.

Nassar, R., Logan, J. A., Worden, H. M., et al.: Validation of tropospheric emissions spectrometer (TES) nadir ozone profiles using ozonesonde measurements, *J. Geophys. Res.*, 113, in press, doi:10.1029/2007JD008819, 2008.

Nowak, J. B., Parrish, D. D., Neuman, J. A., Holloway, J. S., Cooper, O. R., Ryerson, T. B., Nicks Jr., D. K., Flocke, F., Roberts, J. M., Atlas, E., de Gouw, J. A., Donnelly, S., Dunlea, E., Hübler, G., Huey, L. G., Schauffler, S., Tanner, D. J., Warneke, C., and Fehsenfeld, F. C.: Gas-phase chemical characteristics of Asian emission plumes observed during ITCT 2K2 over the eastern North Pacific Ocean, *J. Geophys. Res.*, 109, D23S19, doi:10.1029/2003JD004488, 2004.

Ohara, T., Akimoto, H., Kurokawa, J., Horii, N., Yamaji, K., Yan, X., and Hayasaka, T.: An Asian emission inventory of anthropogenic emission sources for the period 1980–2020, *Atmos. Chem. Phys.*, 7, 4419–4444, 2007, <http://www.atmos-chem-phys.net/7/4419/2007/>.

Olson, J. R., Crawford, J. H., Chen, G., Brune, W. H., Faloona, I. C., Tan, D., Harder, H., and Martinez, M.: A reevaluation of airborne HO<sub>x</sub> observations from NASA field campaigns, *J. Geophys. Res.*, 111, D10301, doi:10.1029/2005JD006617, 2006.

Park, R. J., Jacob, D. J., Field, B. D., Yantosca, R. M., and Chin, M.: Natural and trans-boundary pollution influences on sulfate-nitrate-ammonium aerosols in the United States: Implications for policy, *J. Geophys. Res.*, 109, D15204, doi:10.1029/2003JD004473, 2004.

Parrish, D. D., Holloway, J. S., Trainer, M., Murphy, P. C., Fehsenfeld, F. C., and Forbes, G. L.: Export of North America ozone pollution to the North Atlantic Ocean, *Science*, 259, 1436–1439, 1993.

Pierce, R. B., Al-Saadi, J. A., Schaack, T., Lenzen, A., Zapotocny, T., Johnson, D., Kittaka, C., Buker, M., Hitchman, M. H., Tripoli, G., Fairlie, T. D., Olson, J. R., Natarajan, M., Crawford, J., Fishman, J., Avery, M., Browell, E. V., Creilson, J., Kondo, Y., and Sandholm, S. T.: Regional Air Quality Modeling System (RAQMS) predictions of the tropospheric ozone budget over east Asia, *J. Geophys. Res.*, 108(D21), 8825, doi:10.1029/2002JD003176, 2003.

Pickering, K. E., Wang, Y. S., Tao, W. K., Price, C., and Muller, J. F.: Vertical distributions of lightning NO<sub>x</sub> for use in regional and global chemical transport models, *J. Geophys. Res.*, 103, 31,203–31,216, 1998.

Prather, M. J. and Ehhalt, D.: Chapter 4: Atmospheric Chemistry and Greenhouse Gases, in *Climate Change 2001: The Science of Climate Change*, Intergovernmental Panel on Climate

**Transpacific  
transport of ozone  
pollution**

**L. Zhang**

Title Page

Abstract

Introduction

Conclusions

References

Tables

Figures

◀

▶

◀

▶

Back

Close

Full Screen / Esc

Printer-friendly Version

Interactive Discussion





**Transpacific  
transport of ozone  
pollution****L. Zhang**

Title Page

Abstract

Introduction

Conclusions

References

Tables

Figures

◀

▶

◀

▶

Back

Close

Full Screen / Esc

Printer-friendly Version

Interactive Discussion

Change, Cambridge University Press, 2001.

Price, C. and Rind, D.: A simple lightning parameterization for calculating global lightning distributions, *J. Geophys. Res.*, 97, 9919–9933, 1992.

Price, H. U., Jaffe, D. A., Cooper, O. R., and Doskey, P. V.: Photochemistry, ozone production, and dilution during long-range transport episodes from Eurasia to the northwest United States, *J. Geophys. Res.*, 109, D23S13, doi:10.1029/2003JD004400, 2004.

Ren, X., Mao, J., Chen, Z., Brune, W., Olson, J., Crawford, J., Chen, G.: HO<sub>x</sub> Chemistry and Ozone Production During INTEX-B, *Eos Trans. AGU*, 88(52), Fall Meet. Suppl., Abstract A42A-04, 2007.

Richards, N. A. D., Osterman, G. B., Browell, E. V., Hair, J. W., Avery M., and Li, Q.: Validation of Tropospheric Emission Spectrometer (TES) Ozone Profiles with Aircraft Observations During INTEX-B, *J. Geophys. Res.*, in press, 2008.

Richter, A., Burrows, J. P., Nuß, H., Granier, C., and Niemeier, U.: Increase in tropospheric nitrogen dioxide levels over China observed from space, *Nature*, 437, 129–132, 2005.

Staudt, A. C., Jacob, D. J., Logan, J. A., Bachiochi, D., Krishnamurti, T. N., and Sachse, G. W.: Continental sources, transoceanic transport, and interhemispheric exchange of carbon monoxide over the Pacific, *J. Geophys. Res.*, 106, 32 571–32 590, 2001.

Stohl, A., Eckhardt, S., Forster, C., James, P., and Spichtinger, N.: On the pathways and timescales of intercontinental air pollution transport, *J. Geophys. Res.*, 107(D23), 4684, doi:10.1029/2001JD001396, 2002.

Streets, D. G., Bond, T. C., Carmichael, G. R., Fernandes, S. D., Fu, Q., He, D., Klimont, Z., Nelson, S. M., Tsai, N. Y., Wang, M. Q., Woo, J.-H., and Yarber, K. F.: An inventory of gaseous and primary aerosol emissions in Asia in the year 2000, *J. Geophys. Res.*, 108(D21), 8809, doi:10.1029/2002JD003093, 2003.

Streets, D. G., Zhang, Q., Wang, L., He, K., Hao, J., Wu, Y., Tang, Y., and Carmichael, G. R.: Revisiting China's CO emissions after TRACE-P: Synthesis of inventories, atmospheric modeling, and observations, *J. Geophys. Res.*, 111, D14306, doi:10.1029/2006JD007118, 2006.

Sudo, K. and Akimoto, H.: Global source attribution of tropospheric ozone: Long-range transport from various source regions, *J. Geophys. Res.*, 112, D12302, doi:10.1029/2006JD007992, 2007.

Thompson, A. M., Pickering, K. E., Dickerson, R. R., Ellis, W. G., Jacob, D. J., Scala, J. R., Tao, W. K., McNamara, D. P., and Simpson, J.: Convective transport over the central United States

and its role in regional CO and ozone budgets, *J. Geophys. Res.*, 99(D9), 18 703–18 711, 1994.

Thompson, A.M., Pickering, K.E., McNamara, D.P., Schoeberl, M.R., Hudson, R.D., Kim, J.-H., Browell, E.V., Kirchhoff, V.W.J.H., and Nganga, D.: Where did tropospheric ozone over southern Africa and the tropical Atlantic come from in October 1992? Insights from TOMS, GTE/TRACE-A and SAFARI-92, *J. Geophys. Res.*, 101, 24 251–24 278, 1996.

Thompson, A. M., Yorks, J. E., Miller, S. K., et al.: Tropospheric Ozone Sources and Wave Activity over Mexico City and Houston during Milagro/Intercontinental Transport Experiment (INTEX-B) Ozonesonde Network Study, 2006 (IONS-06), *Atmos. Chem. Phys. Disc.* 2007–0668, in review, 2008.

van der A, R. J., Peters, D. H. M. U., Eskes, H., Boersma, K. F., Van Roozendaal, M., De Smedt, I., and Kelder, H. M.: Detection of the trend and seasonal variation in tropospheric NO<sub>2</sub> over China, *J. Geophys. Res.*, 111, D12317, doi:10.1029/2005JD006594, 2006.

van der Werf, G. R., Randerson, J. T., Giglio, L., Collatz, J. G., Kasibhatla, P., and Arellano, A. F.: Interannual variability in global biomass burning emissions from 1997 to 2004, *Atmos. Chem. Phys.* 6, 3423–3441, 2006.

Venables, W. N. and Ripley, B. D.: *Modern Applied Statistics with S-PLUS*, 3rd ed., Springer-Verlag, New York, 1999.

Wang, Y., Jacob, D. J., and Logan, J. A.: Global simulation of tropospheric O<sub>3</sub>-NO<sub>x</sub>-hydrocarbon chemistry 1. Model formulation, *J. Geophys. Res.*, 103(D9), 10 713–10 726, 1998a.

Wang, Y., Jacob, D. J., and Logan, J. A.: Global simulation of tropospheric O<sub>3</sub>-NO<sub>x</sub>-hydrocarbon chemistry, 3. Origin of tropospheric ozone and effects of non-methane hydrocarbons, *J. Geophys. Res.*, 103(D9), 10 757–10 768, 1998b.

Wang, Y. X., McElroy, M. B., Martin, R. V., Streets, D. G., Zhang, Q., and Fu, T.-M.: Seasonal variability of NO<sub>x</sub> emissions over east China constrained by satellite observations: Implications for combustion and microbial sources, *J. Geophys. Res.*, 112, D06301, doi:10.1029/2006JD007538, 2007.

Warner, J., Comer, M. M., Barnet, C. D., McMillan, W. W., Wolf, W., Maddy, E., and Sachse, G.: A comparison of satellite tropospheric carbon monoxide measurements from AIRS and MO-PITT during INTEX-A, *J. Geophys. Res.*, 112, D12S17, doi:10.1029/2006JD007925, 2007.

Weiss-Penzias, P., Jaffe, D. A., Jaeglé, L., and Liang, Q.: Influence of long-range-transported pollution on the annual and diurnal cycles of carbon monoxide and ozone at Cheeka Peak Observatory, *J. Geophys. Res.*, 109, D23S14, doi:10.1029/2004JD004505, 2004.

**Transpacific  
transport of ozone  
pollution**

**L. Zhang**

Title Page

Abstract

Introduction

Conclusions

References

Tables

Figures

◀

▶

◀

▶

Back

Close

Full Screen / Esc

Printer-friendly Version

Interactive Discussion



**Transpacific  
transport of ozone  
pollution****L. Zhang**

Title Page

Abstract

Introduction

Conclusions

References

Tables

Figures

◀

▶

◀

▶

Back

Close

Full Screen / Esc

Printer-friendly Version

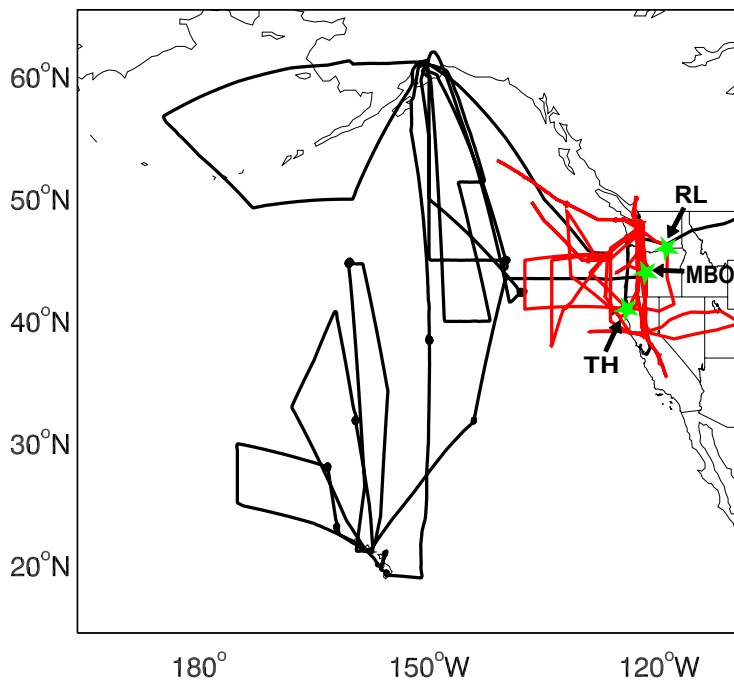
Interactive Discussion

- Weiss-Penzias, P., Jaffe, D. A., Swartzendruber, P., Dennison, J. B., Chand, D., Hafner, W., and Prestbo, E.: Observations of Asian air pollution in the free troposphere at Mount Bachelor Observatory during the spring of 2004, *J. Geophys. Res.*, 111, D10304, doi:10.1029/2005JD006522, 2006.
- 5 Weiss-Penzias P., Jaffe, D. A., Swartzendruber, P., Hafner, W., Chand, D., and Prestbo, E.: Quantifying Asian and biomass burning sources of mercury using the Hg/CO ratio in pollution plumes observed at the Mount Bachelor Observatory, *Atmos. Envir.*, 41, 4366–4379, doi:10.1016/j.atmosenv.2007.01.058, 2007.
- Wild, O. and Akimoto, H.: Intercontinental transport of ozone and its precursors in a three-dimensional global CTM, *J. Geophys. Res.*, 106, 27 729–27 744, 2001.
- 10 Wolfe, G. M., Thornton, J. A., McNeill, V. F., Jaffe, D. A., Reidmiller, D., Chand, D., Smith, J., Swartzendruber, P., Flocke, F., and Zheng, W.: Influence of trans-Pacific pollution transport on acyl peroxy nitrate abundances and speciation at Mount Bachelor Observatory during INTEX-B, *Atmos. Chem. Phys.*, 7, 5309–5325, 2007, <http://www.atmos-chem-phys.net/7/5309/2007/>.
- 15 Worden, J., Kulawik, S. S., Shephard, M. W., Clough, S. A., Worden, H., Bowman, K., and Goldman, A.: Predicted errors of tropospheric emission spectrometer nadir retrievals from spectral window selection, *J. Geophys. Res.*, 109, D09308, doi:10.1029/2004JD004522, 2004.
- Yienger, J. J. and Levy II, H.: Empirical model of global soil biogenic NO<sub>x</sub> emissions, *J. Geophys. Res.*, 100, 11 447–11 464, 1995.
- 20 Yienger, J. J., Galanter, M., Holloway, T. A., Phadnis, M. J., Guttikunda, S. K., Carmichael, G. R., Moxim, W. J., and Levy, H.: The episodic nature of air pollution transport from Asia to North America, *J. Geophys. Res.*, 105, 26 931–26 945, 2000.
- Zhang, L., Jacob, D. J., Bowman, K. W., Logan, J. A., Turquety, S., Hudman, R. C., Li, Q., Beer, R., Worden, H. M., Worden, J. R., Rinsland, C. P., Kulawik, S. S., Lampel, M. C., Shephard, M. W., Fisher, B. M., Eldering, A., and Avery, M. A.: Continental outflow of ozone pollution as determined by O<sub>3</sub>-CO correlations from the TES satellite instrument, *Geophys. Res. Lett.*, 33, L18804, doi:10.1029/2006GL026399, 2006.
- 25 Zhang, Q., Streets, D. G., He, K., Wang, Y., Richter, A., Burrows, J. P., Uno, I., Jang, C. J., Chen, D., Yao, Z., and Lei, Y.: NO<sub>x</sub> emission trends for China, 1995–2004: The view from the ground and the view from space, *J. Geophys. Res.*, 112, D22306, doi:10.1029/2007JD008684, 2007.
- 30



**Transpacific  
transport of ozone  
pollution**

L. Zhang

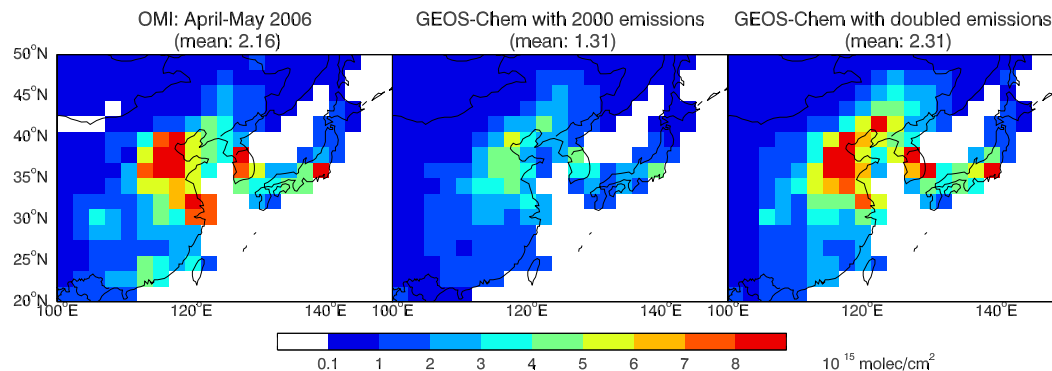


**Fig. 1.** Flight tracks of the NASA DC-8 (black) and NSF/NCAR C-130 (red) aircraft during the INTEX-B campaign (17 April–15 May, 2006). The green stars show the locations of the Mt. Bachelor Observatory (MBO) in Oregon (2.7 km altitude), Trinidad Head (TH) in California, and Richland (RL) in Washington.

[Title Page](#)[Abstract](#)[Introduction](#)[Conclusions](#)[References](#)[Tables](#)[Figures](#)[◀](#)[▶](#)[◀](#)[▶](#)[Back](#)[Close](#)[Full Screen / Esc](#)[Printer-friendly Version](#)[Interactive Discussion](#)

Transpacific  
transport of ozone  
pollution

L. Zhang

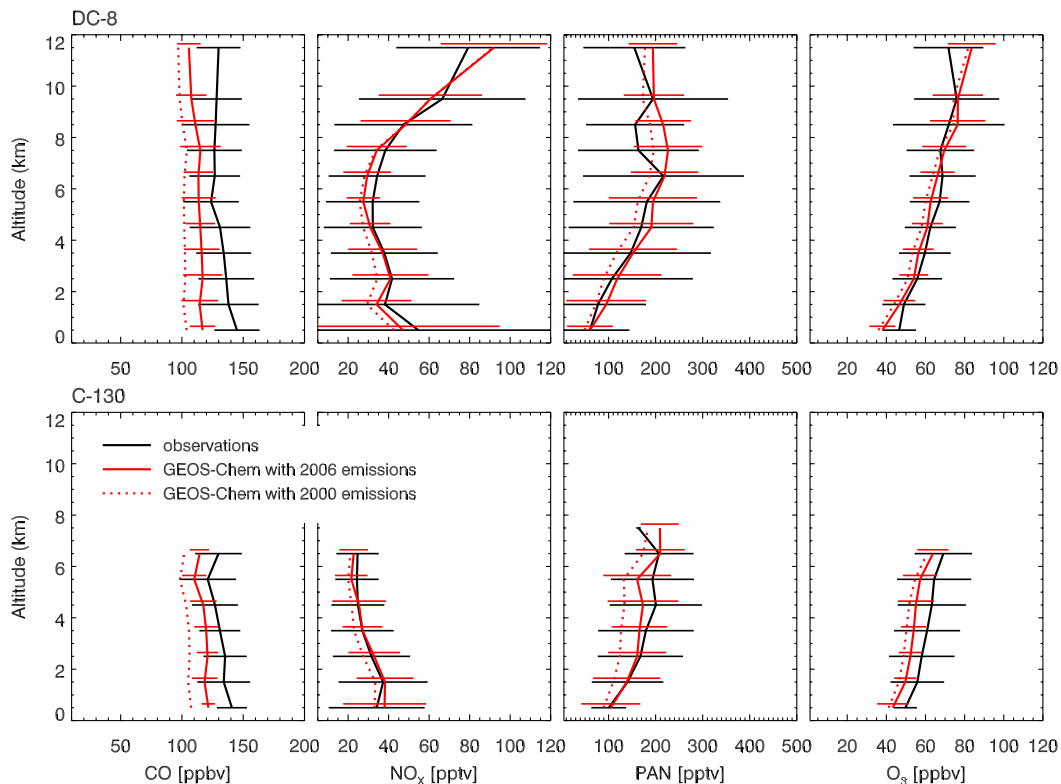


**Fig. 2.** Mean tropospheric NO<sub>2</sub> columns from OMI and the GEOS-Chem model in April–May 2006 over eastern Asia. The OMI data (left panel) have been mapped on the 2°×2.5° GEOS-Chem grid. GEOS-Chem model results are shown using 2000 anthropogenic NO<sub>x</sub> emissions from Streets et al. (2003) (central panel) and a doubling of these emissions to represent 2006 conditions (right panel). The numbers in parentheses are the mean column values over eastern Asia.

[Title Page](#)[Abstract](#)[Introduction](#)[Conclusions](#)[References](#)[Tables](#)[Figures](#)[◀](#)[▶](#)[◀](#)[▶](#)[Back](#)[Close](#)[Full Screen / Esc](#)[Printer-friendly Version](#)[Interactive Discussion](#)

Transpacific  
transport of ozone  
pollution

L. Zhang

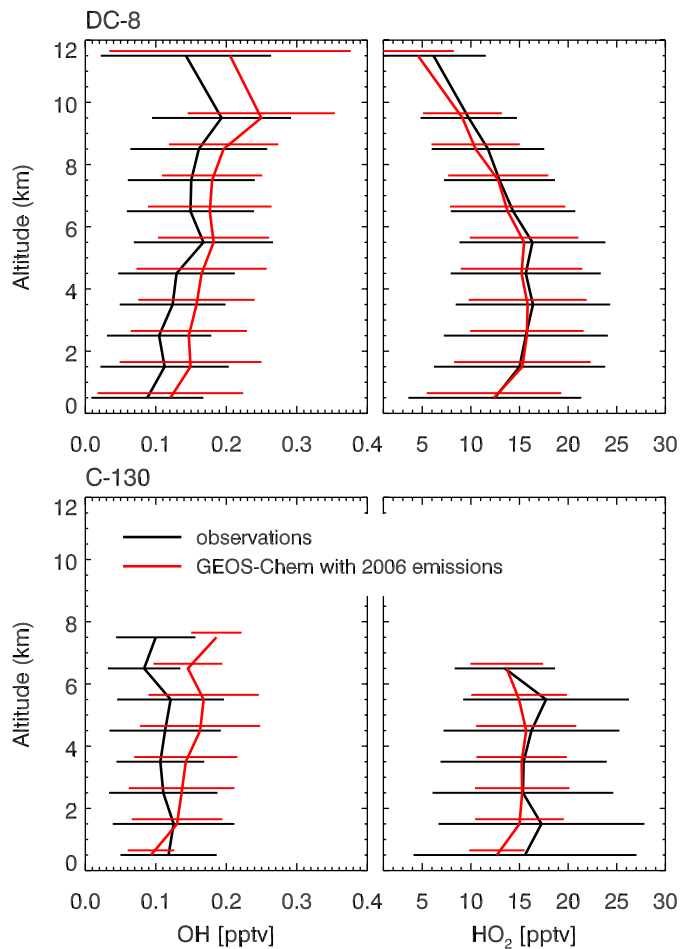


**Fig. 3.** Mean vertical profiles of CO, NO<sub>x</sub>, PAN, and O<sub>3</sub> concentrations over the Northeast Pacific during INTEX-B (April-May 2006). Observations (black) from the DC-8 (top) and C-130 (bottom) aircraft are compared to GEOS-Chem model results with 2006 Asian emissions (red solid) and 2000 Asian emissions (red dash). Horizontal bars are standard deviations. Here and in subsequent figures, the observations have been filtered to remove urban plumes, biomass burning plumes, and stratospheric air as described in the text. Model results are sampled along the flight tracks at the time of flights, and observations are averaged over the model grid.

[Title Page](#)[Abstract](#)[Introduction](#)[Conclusions](#)[References](#)[Tables](#)[Figures](#)[◀](#)[▶](#)[◀](#)[▶](#)[Back](#)[Close](#)[Full Screen / Esc](#)[Printer-friendly Version](#)[Interactive Discussion](#)

Transpacific  
transport of ozone  
pollution

L. Zhang

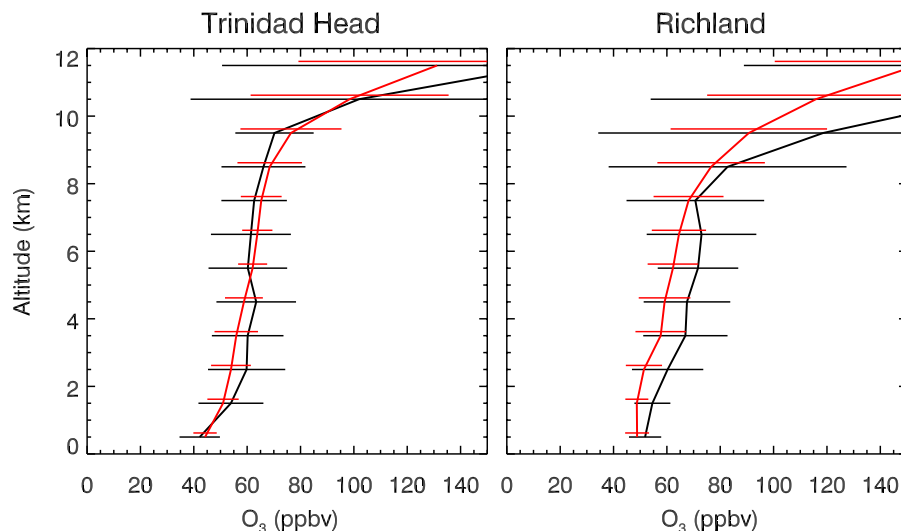


**Fig. 4.** Same as Fig. 3 but for OH and HO<sub>2</sub>. Only model results with 2006 Asian emissions are shown.

[Title Page](#)[Abstract](#)[Introduction](#)[Conclusions](#)[References](#)[Tables](#)[Figures](#)[◀](#)[▶](#)[◀](#)[▶](#)[Back](#)[Close](#)[Full Screen / Esc](#)[Printer-friendly Version](#)[Interactive Discussion](#)

Transpacific  
transport of ozone  
pollution

L. Zhang



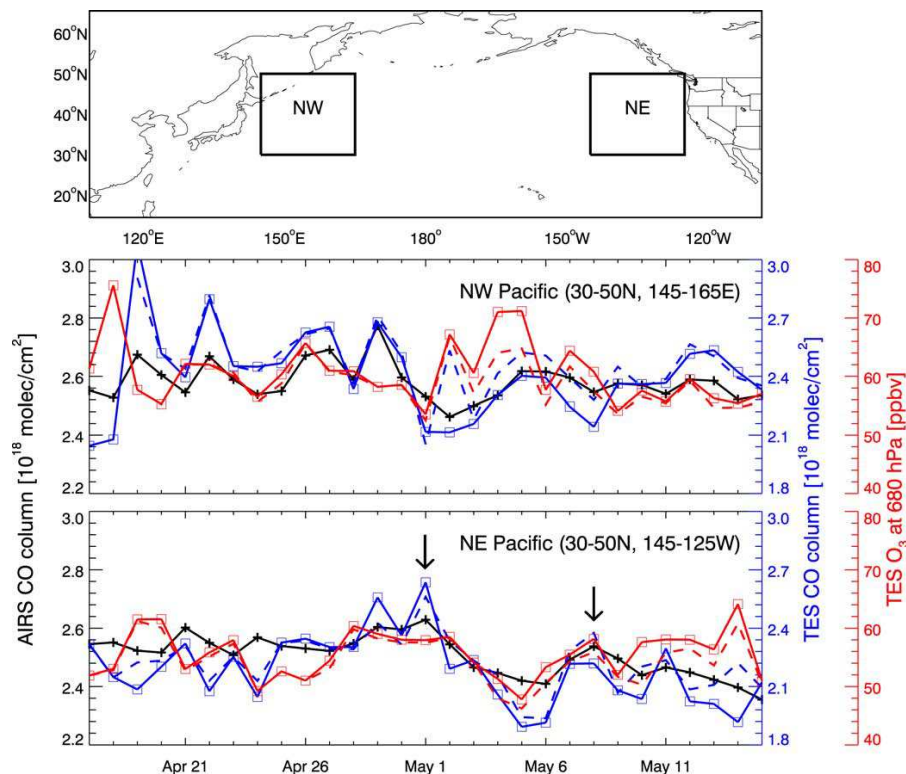
**Fig. 5.** Mean ozone concentration profiles over Trinidad Head, California ( $41^{\circ}$  N,  $124^{\circ}$  W) and Richland, Washington ( $46^{\circ}$  N,  $119^{\circ}$  W) during the INTEX-B campaign. The black lines show the means and standard deviations of ozonesondes data for the period of 17 April–15 May 2006 (13 sondes at Trinidad Head and 24 at Richland). The red lines show the corresponding means and standard deviations of model results with 2006 Asian emissions.

[Title Page](#)[Abstract](#)[Introduction](#)[Conclusions](#)[References](#)[Tables](#)[Figures](#)[◀](#)[▶](#)[◀](#)[▶](#)[Back](#)[Close](#)[Full Screen / Esc](#)[Printer-friendly Version](#)[Interactive Discussion](#)



Transpacific  
transport of ozone  
pollution

L. Zhang

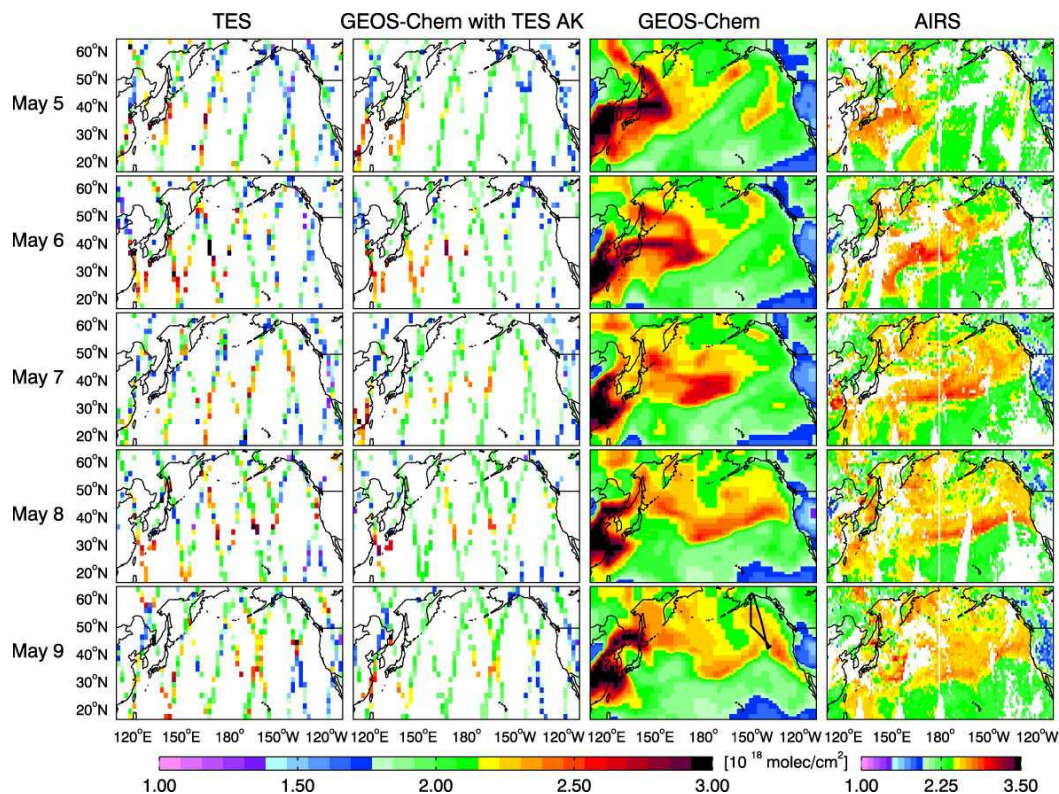


**Fig. 6.** Time series of AIRS and TES CO columns, and TES ozone at 680 hPa over the Northwest and Northeast Pacific during the INTEX-B time period. Two transpacific transport events are identified by arrows, reaching the Northeast Pacific on 1 May and 8 May. The dashed lines show the time series of TES observations after filtering out stratospheric influence as described in the text.

[Title Page](#)[Abstract](#)[Introduction](#)[Conclusions](#)[References](#)[Tables](#)[Figures](#)[◀](#)[▶](#)[◀](#)[▶](#)[Back](#)[Close](#)[Full Screen / Esc](#)[Printer-friendly Version](#)[Interactive Discussion](#)

Transpacific  
transport of ozone  
pollution

L. Zhang



**Fig. 7.** CO columns from AIRS, TES and the GEOS-Chem model during the 5–9 May transpacific Asian pollution event observed by the INTEX-B aircraft. GEOS-Chem values are sampled along the TES orbit tracks and with TES averaging kernels applied. The original TES data have been reprocessed to remove the effect of variable a priori and averaged on the model resolution. Original GEOS-Chem model results sampled at 12:00 UTC are also shown; the black line in the lower panel shows the INTEX-B DC-8 flight track on 9 May.

Title Page

Abstract

Introduction

Conclusions

References

Tables

Figures

◀

▶

◀

▶

Back

Close

Full Screen / Esc

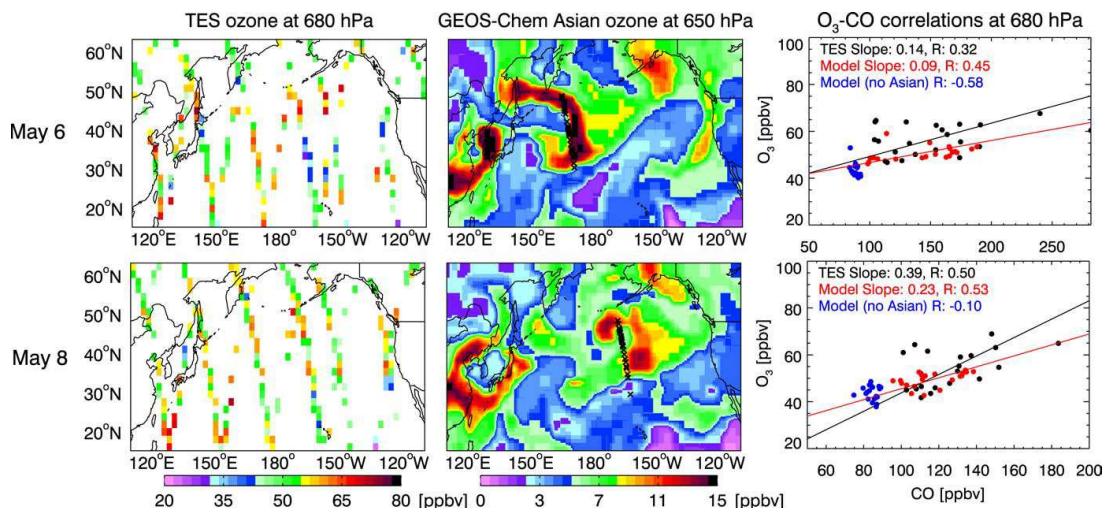
Printer-friendly Version

Interactive Discussion



Transpacific  
transport of ozone  
pollution

L. Zhang



**Fig. 8.** (left) TES observations of ozone concentrations at 680 hPa on 6 May and 8 May. The original TES data have been reprocessed to remove the effect of variable a priori and averaged on the  $2^\circ \times 2.5^\circ$  GEOS-Chem model grid. (center) Simulated Asian ozone enhancement on 6 May and 8 May at 12:00UTC, as determined by difference between the standard GEOS-Chem simulation and a simulation with Asian anthropogenic sources shut off. The black crosses show the locations of the TES observations of the Asian pollution plume used in the O<sub>3</sub>-CO analysis. (right) TES observed O<sub>3</sub>-CO relationships at 680 hPa for the plume shown in the central panel. The model results from the standard simulation (red) and a sensitivity simulation with Asian emissions shut off (blue) are sampled along the TES orbit tracks and with TES averaging kernels applied. Correlation coefficients ( $r$ ) and slopes of the reduced-major-axis regression lines ( $dO_3/dCO$ , mol mol<sup>-1</sup>) are shown inset.

Title Page

Abstract

Introduction

Conclusions

References

Tables

Figures

◀

▶

◀

▶

Back

Close

Full Screen / Esc

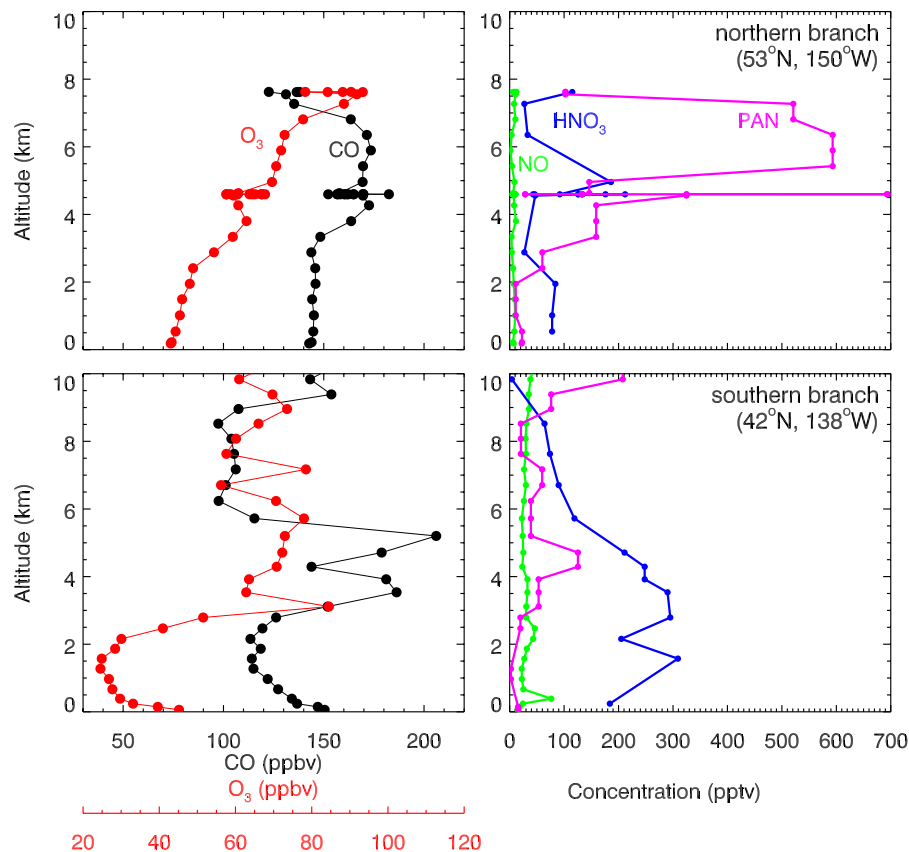
Printer-friendly Version

Interactive Discussion



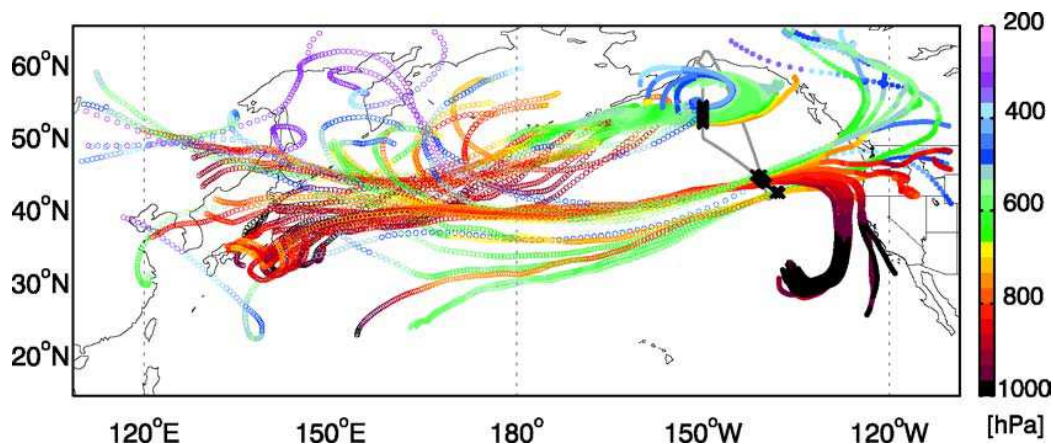
Transpacific  
transport of ozone  
pollution

L. Zhang



**Fig. 9.** Observed vertical profiles of concentrations for the northern (top) and southern (bottom) branches of the Asian pollution plume sampled by the INTEX-B DC-8 flight on 9 May. (left) CO (solid black) and ozone (solid red). (right)  $\text{NO}_y$  components: PAN (solid purple),  $\text{HNO}_3$  (solid blue), and NO (solid green).

[Title Page](#)[Abstract](#)[Introduction](#)[Conclusions](#)[References](#)[Tables](#)[Figures](#)[◀](#)[▶](#)[◀](#)[▶](#)[Back](#)[Close](#)[Full Screen / Esc](#)[Printer-friendly Version](#)[Interactive Discussion](#)



**Fig. 10.** Kinematic 7-day backward (open circle) and 3-day forward (solid circle) trajectories for the enhanced CO layers of Asian pollution ( $\text{CO} > 125$  ppbv and 2–7 km) observed in INTEX-B DC-8 flight on May 9 as shown in Fig. 9. The flight track is shown in gray and the black crosses show the locations of enhanced CO layers, corresponding to the northern and southern branches of Fig. 9. The trajectories were constructed using reanalysis data from the National Centers for Environmental Prediction (Fuelberg et al., 2007).

## Transpacific transport of ozone pollution

L. Zhang

Title Page

Abstract

Introduction

Conclusions

References

Tables

Figures

◀

▶

◀

▶

Back

Close

Full Screen / Esc

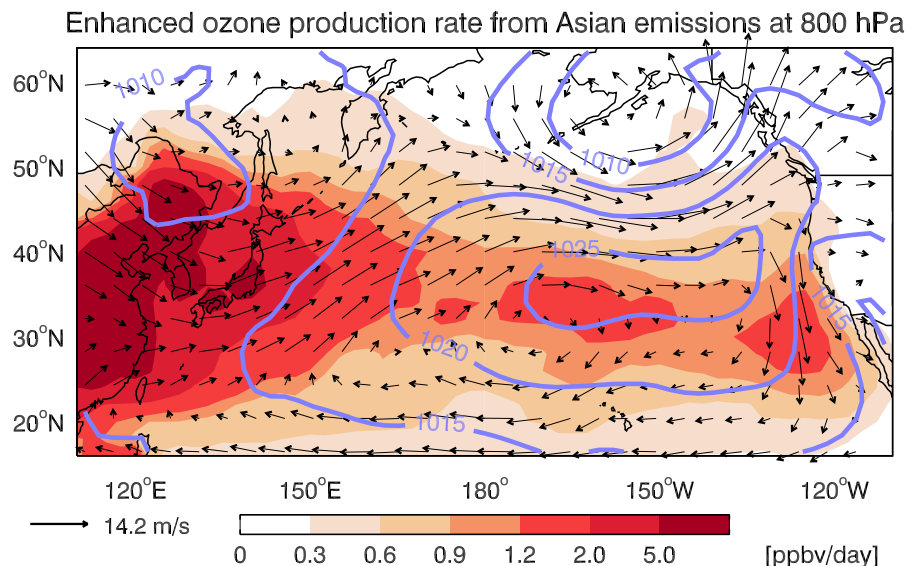
Printer-friendly Version

Interactive Discussion



Transpacific  
transport of ozone  
pollution

L. Zhang

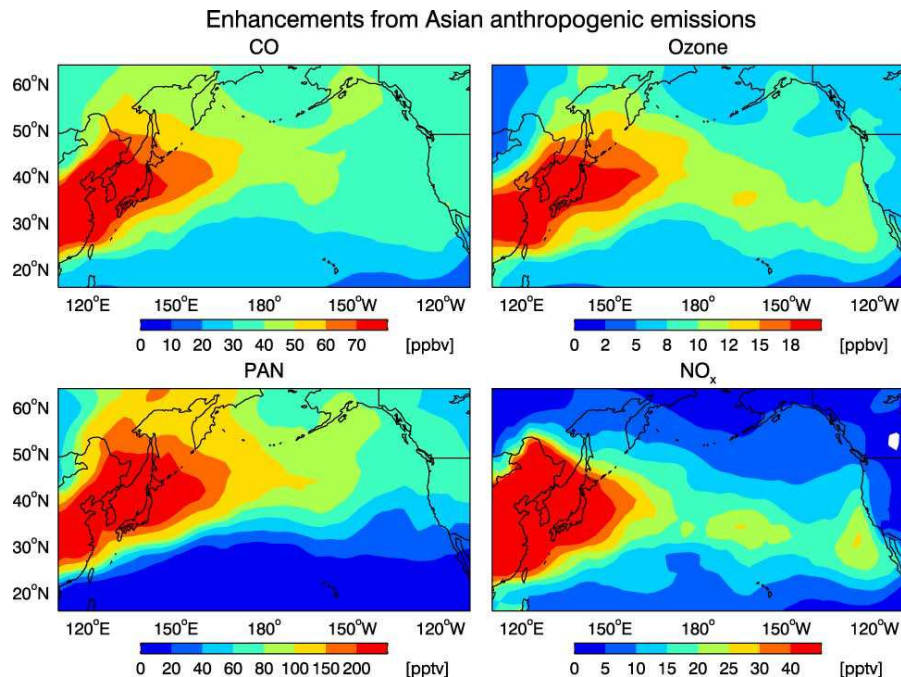


**Fig. 11.** Mean gross ozone (odd oxygen) production rate at 800 hPa from anthropogenic Asian emissions during the INTEX-B period (17 April–15 May 2006). The Asian enhancement of ozone production is determined by the difference of gross ozone production rates between the standard simulation and a sensitivity simulation with Asian anthropogenic emissions shut off. The contours and vectors represent the mean GEOS-4 sea level pressures and 800 hPa wind fields for the period.

[Title Page](#)[Abstract](#)[Introduction](#)[Conclusions](#)[References](#)[Tables](#)[Figures](#)[◀](#)[▶](#)[◀](#)[▶](#)[Back](#)[Close](#)[Full Screen / Esc](#)[Printer-friendly Version](#)[Interactive Discussion](#)

Transpacific  
transport of ozone  
pollution

L. Zhang

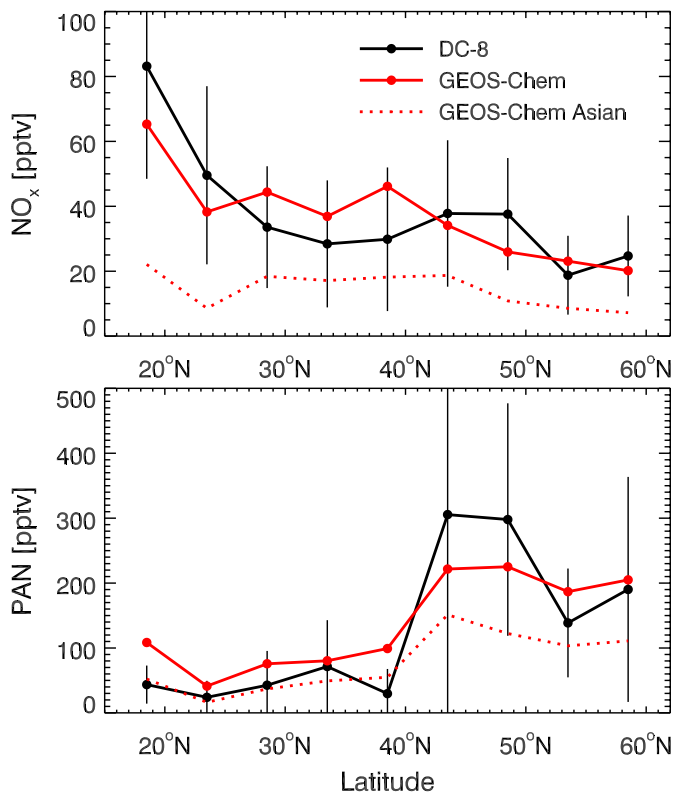


**Fig. 12.** Mean GEOS-Chem simulated Asian pollution enhancements of ozone, CO, NO<sub>x</sub>, and PAN at 800 hPa for the INTEX-B period (17 April–15 May, 2006). The Asian pollution enhancements are determined by difference between the standard simulation and a sensitivity simulation with Asian anthropogenic emissions shut off.

[Title Page](#)[Abstract](#)[Introduction](#)[Conclusions](#)[References](#)[Tables](#)[Figures](#)[◀](#)[▶](#)[◀](#)[▶](#)[Back](#)[Close](#)[Full Screen / Esc](#)[Printer-friendly Version](#)[Interactive Discussion](#)

Transpacific  
transport of ozone  
pollution

L. Zhang



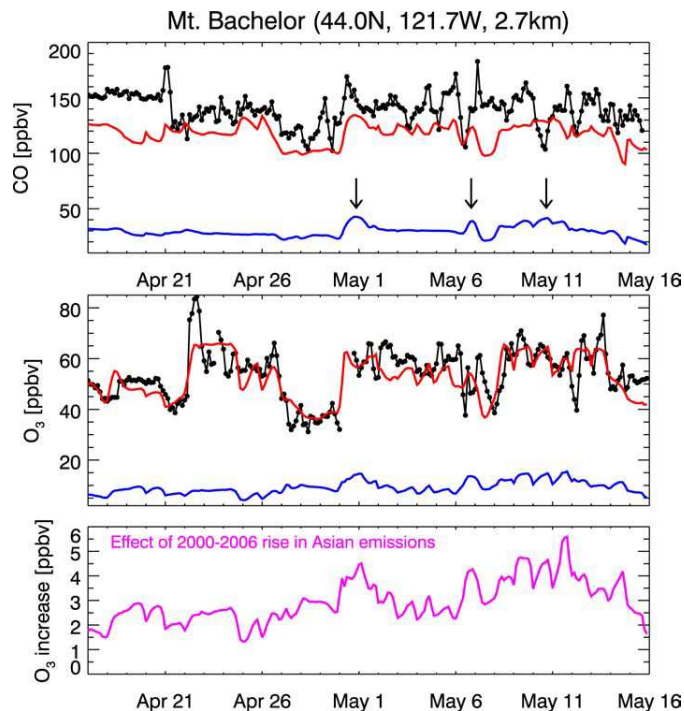
**Fig. 13.** Mean latitudinal distributions of  $\text{NO}_x$  and PAN concentrations over the Northeast Pacific at 1.5–5 km altitude during the INTEX-B period. Model results (red solid) are compared to the INTEX-B observations (black solid). Red dashed lines show the model Asian enhancements. Vertical bars are standard deviations on the observations.

[Title Page](#)[Abstract](#)[Introduction](#)[Conclusions](#)[References](#)[Tables](#)[Figures](#)[◀](#)[▶](#)[◀](#)[▶](#)[Back](#)[Close](#)[Full Screen / Esc](#)[Printer-friendly Version](#)[Interactive Discussion](#)



Transpacific  
transport of ozone  
pollution

L. Zhang

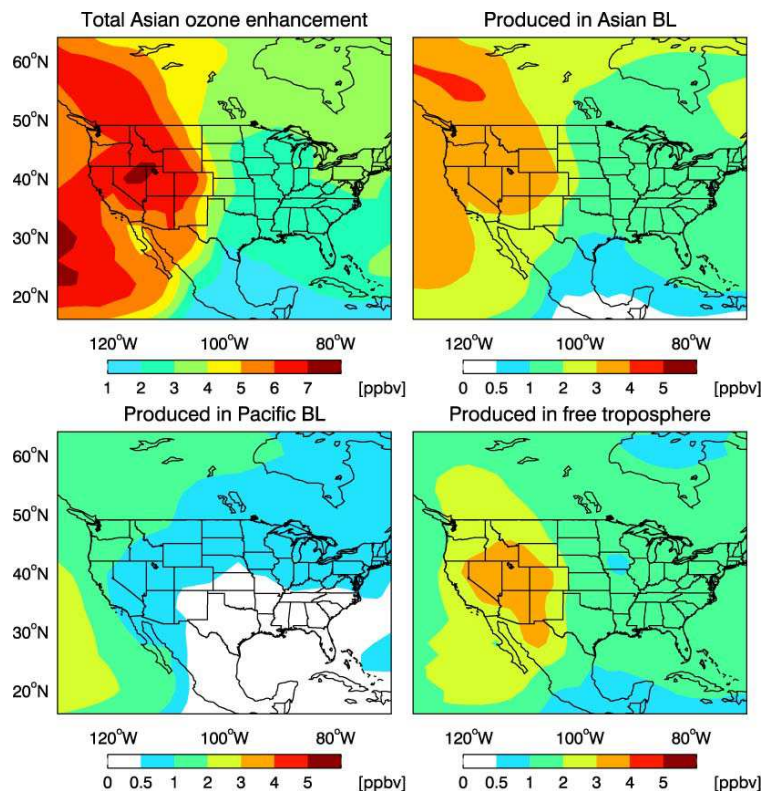


**Fig. 14.** Time series of 3-hourly averaged CO (top) and ozone (center) concentrations at MBO during the INTEX-B period. Model results (red) are compared to observations (black). The blue lines show the Asian anthropogenic enhancements in the model as determined by the difference between the standard simulation and a sensitivity simulation with Asian anthropogenic emissions shut off. Black arrows show Asian CO pollution maxima as indicated by the model. The bottom panel shows the simulated increase of ozone concentrations at MBO due to the rise of Asian anthropogenic emissions from 2000 to 2006.

[Title Page](#)[Abstract](#)[Introduction](#)[Conclusions](#)[References](#)[Tables](#)[Figures](#)[◀](#)[▶](#)[◀](#)[▶](#)[Back](#)[Close](#)[Full Screen / Esc](#)[Printer-friendly Version](#)[Interactive Discussion](#)

Transpacific  
transport of ozone  
pollution

L. Zhang



**Fig. 15.** Mean simulated US surface ozone enhancements from Asian anthropogenic emissions during the INTEX-B time period (17 April–15 May, 2006). Total Asian ozone enhancements (top left) are separated into linear contributions from ozone produced in the Asian continental and Pacific boundary layers (surface – 700 hPa), and ozone produced in the free troposphere (700 hPa – tropopause). Note that the top left panel has a different scale than the others.

Title Page

Abstract

Introduction

Conclusions

References

Tables

Figures

◀

▶

◀

▶

Back

Close

Full Screen / Esc

Printer-friendly Version

Interactive Discussion

